

Northern CVP Water Temperature Report

May - 2020

Page	Description
1	- Mean Daily Water Temperature, Release Flow Rates and Air Temperatures with Monthly Averages
2	- Redding 10-Day Forecasted Air Temperatures
3	- Sacramento River Mean Daily Water Temperature, Air Temperature and 10-Day Forecasted Air Temperature Plot - Water Temperature Measuring Station Details - Temperature Control Point Details
4	- Shasta Lake Isothermobaths Plot
5	- Trinity Lake Isothermobaths Plot
6	- Whiskeytown Lake Isothermobaths Plot
x	- TCD Configuration (External Link)



— BUREAU OF —
RECLAMATION

All Data in this Report is Preliminary and Subject to Change

DATE	Mean Daily Water Temperatures (°F)													Mean Daily Release (CFS)			Mean Daily Air Temperatures (°F)			
	TCD ¹	SHD	SPP ¹	KWK	SAC	CCR	BSF ²	JLF	BND	RDB	IGO	LWS	-----	Shasta Generation	Spring Creek P.P.	Keswick Total	RDD	BSF	RDB	LWS
Apr	52.1	50.8	49.3	51.2	51.9	52.5	54.2	55.4	55.9	56.6	51.9	49.1	-	4718	1542	6505	62.1	60.4	62.0	-
05/01	53.2	? 51.7	49.8	52.3	52.8	53.4	55.1	56.5	57.0	58.2	53.0	49.6	-	7929	1920	9713	65.0	63.3	65.9	-
05/02	52.6	51.4	49.9	52.5	52.8	53.2	54.7	55.9	56.5	57.4	52.1	49.0	-	7358	1925	9705	63.5	60.5	63.8	-
05/03	53.2	? 51.5	50.0	52.2	52.7	53.2	54.7	55.7	56.1	56.8	52.4	48.8	-	7137	1890	9737	60.5	59.5	61.4	-
05/04	53.1	51.6	50.0	52.7	53.0	53.5	54.6	55.7	56.1	57.0	52.9	48.6	-	7614	1919	9724	63.0	61.3	63.8	-
05/05	51.9	50.8	50.2	52.7	53.1	53.7	? 55.2	56.3	56.7	57.6	53.1	49.0	-	7447	1903	9648	66.5	63.9	66.8	-
05/06	52.9	51.4	50.2	52.4	53.0	53.7	55.5	56.6	57.0	57.7	53.8	49.2	-	8172	1671	9712	66.5	66.4	71.2	-
05/07	53.7	52.4	50.3	52.6	52.9	53.4	54.7	55.9	56.4	57.7	53.9	49.3	-	8133	1120	9709	76.0	70.5	74.2	-
05/08	53.4	? 52.2	50.4	53.5	53.9	54.6	56.0	57.1	57.5	58.2	53.9	49.5	-	7967	1310	9710	73.0	70.9	72.9	-
05/09	53.5	52.2	50.5	53.5	54.0	54.7	56.2	57.6	58.1	59.3	51.8	49.5	-	8238	1141	9702	75.5	71.9	73.7	-
05/10	53.9	53.0	50.6	53.7	54.1	54.7	56.1	57.3	57.7	58.9	51.9	49.8	-	8953	447	9697	72.0	68.7	69.3	-
05/11	53.2	52.3	50.6	53.6	53.7	54.0	54.9	55.9	56.5	57.5	51.5	49.5	-	8264	914	9497	62.5	57.9	58.5	-
05/12	52.9	51.6	50.6	52.8	53.3	53.7	54.4	55.1	55.5	56.3	52.7	49.3	-	8144	1014	9494	58.0	56.7	60.5	-
05/13	52.9	52.1	50.7	52.4	52.7	52.8	54.1	54.9	55.1	55.6	52.2	48.8	-	8463	943	9490	57.5	56.5	57.8	-
05/14	52.9	51.7	50.7	52.4	52.6	52.8	54.0	54.8	55.1	55.4	52.3	48.7	-	8127	1303	9491	59.0	57.8	59.7	-
05/15	53.3	51.9	50.6	52.4	52.9	53.4	55.0	56.0	56.2	56.7	53.3	48.7	-	7455	1667	9265	64.5	63.0	65.3	-
05/16	53.1	51.6	50.7	52.9	53.1	53.4	54.9	55.9	56.4	57.3	52.8	48.8	-	6899	1666	8994	65.0	62.5	63.4	-
05/17	52.5	51.3	50.8	52.7	53.1	53.6	55.4	56.6	57.1	57.4	53.8	49.1	-	7179	1665	8775	65.0	62.9	63.2	-
05/18	52.3	51.2	50.8	52.4	52.8	53.0	55.0	55.5	56.0	57.1	52.5	48.8	-	6230	1673	8541	54.5	54.8	56.1	-
05/19	52.8	51.8	50.9	52.2	52.7	53.2	55.2	55.9	56.0	56.2	53.2	49.3	-	7129	1006	8542	59.5	59.1	60.5	-
05/20	53.3	51.9	50.9	52.8	53.2	53.9	55.7	56.7	57.1	57.9	53.6	49.5	-	8093	519	8257	61.5	61.8	61.8	-
05/21	51.8	51.0	51.0	53.2	53.8	54.6	56.6	57.7	58.1	59.0	54.3	49.9	-	6645	1143	8035	68.5	65.4	67.3	-
05/22	51.9	50.5	51.0	53.2	53.9	54.7	56.7	57.9	58.4	59.1	53.9	50.3	-	6220	1141	8033	66.0	63.3	65.0	-
05/23	51.2	49.9	51.0	52.2	53.0	53.7	56.0	57.4	58.0	59.2	54.0	50.8	-	6574	1665	7966	69.5	66.0	68.5	-
05/24	50.7	49.7	51.1	52.1	52.9	53.7	55.9	57.4	58.0	59.1	54.5	50.5	-	6409	1310	7908	77.0	70.9	74.0	-
05/25	50.8	49.8	51.2	51.8	52.7	53.6	56.2	57.9	58.5	59.9	55.4	50.6	-	6344	1542	7907	83.0	77.7	79.7	-
05/26	50.9	49.8	51.2	51.7	52.6	53.4	56.0	57.9	58.8	60.5	55.5	50.8	-	5899	1722	7956	80.5	77.2	79.7	-
05/27	51.0	49.9	51.3	51.9	52.7	53.6	56.2	58.1	58.8	60.2	56.1	51.1	-	6880	1720	8965	82.5	79.9	81.6	-
05/28	51.2	50.1	51.4	52.0	52.7	53.5	56.1	58.0	58.8	60.5	56.1	51.4	-	7884	1173	9426	84.0	81.3	81.1	-
05/29	51.0	50.1	51.4	51.8	52.5	53.2	55.6	57.4	58.2	59.9	55.5	51.3	-	7944	1274	9864	83.0	79.0	79.7	-
05/30	51.0	50.2	51.5	51.4	51.9	52.3	54.2	55.9	56.7	58.2	54.0	50.7	-	8628	1070	9962	65.5	63.5	64.2	-
05/31	51.4	50.5	51.5	51.0	51.6	52.1	54.0	55.3	55.6	56.5	55.0	50.7	-	9168	847	9964	69.5	67.0	68.5	-
May	52.4	51.2	50.7	52.5	53.0	53.6	55.3	56.5	57.0	58.0	53.6	49.7	-	7533	1362	9142	68.3	65.8	67.7	-

Total CFS	233526	42223	283389
Total AF	463189	83748	562091

Legend

- ? = 1-9 hours of data missing (Average includes estimations)
- ! = 10 or more hours of data missing (Average not calculated)
- # = Station out of service
- ↑ = Record high air temperature
- ↓ = Record low air temperature
- ☐ = Monthly Averages

Notes

- ¹ Temperatures are weighted averages based on individual penstock flow and temperature
- Highlighted cells in the TCD column indicate a TCD change was made on that day
- ² Current control point (see page 3 for more details)
- ³ Column not used this month

D A T E	Redding (RDD) Daily Air Temperatures (°F)																																			
	Actual			Forecasted																																
	Previous Day			Current Day			1 Day			2 Days			3 Days			4 Days			5 Days			6 Days			7 Days			8 Days			9 Days			10 Days		
	↓	↑	Avg	↓	↑	Avg	↓	↑	Avg	↓	↑	Avg	↓	↑	Avg	↓	↑	Avg	↓	↑	Avg	↓	↑	Avg	↓	↑	Avg	↓	↑	Avg	↓	↑	Avg	↓	↑	Avg
05/01	59	82	70.5	48	80	64.0	51	74	62.5	47	74	60.5	45	78	61.5	46	82	64.0	49	86	67.5	54	92	73.0	57	86	71.5	56	91	73.5	57	88	72.5	55	82	68.5
05/02	48	82	65.0	56	73	64.5	42	76	59.0	44	81	62.5	49	83	66.0	49	87	68.0	54	92	73.0	56	95	75.5	59	94	76.5	59	96	77.5	58	85	71.5	54	81	67.5
05/03	51	76	63.5	46	76	61.0	44	82	63.0	50	84	67.0	51	82	66.5	54	92	73.0	56	95	75.5	58	95	76.5	58	90	74.0	56	88	72.0	55	89	72.0	59	90	74.5
05/04	45	76	60.5	45	82	63.5	49	83	66.0	50	83	66.5	54	92	73.0	55	96	75.5	58	96	77.0	60	92	76.0	57	86	71.5	52	84	68.0	55	86	70.5	58	88	73.0
05/05	44	82	63.0	53	83	68.0	50	84	67.0	54	93	73.5	55	97	76.0	59	96	77.5	59	91	75.0	56	82	69.0	53	79	66.0	51	78	64.5	54	80	67.0	56	85	70.5
05/06	50	83	66.5	50	83	66.5	55	93	74.0	56	98	77.0	59	96	77.5	59	90	74.5	55	80	67.5	51	71	61.0	49	73	61.0	51	79	65.0	55	83	69.0	57	88	72.5
05/07	49	84	66.5	65	93	79.0	55	98	76.5	60	97	78.5	59	90	74.5	54	73	63.5	50	68	59.0	48	73	60.5	51	81	66.0	55	84	69.5	57	85	71.0	58	86	72.0
05/08	59	93	76.0	51	97	74.0	59	96	77.5	59	88	73.5	55	75	65.0	51	65	58.0	48	71	59.5	50	76	63.0	52	75	63.5	54	84	69.0	57	81	69.0	56	81	68.5
05/09	50	96	73.0	57	96	76.5	58	89	73.5	55	74	64.5	51	68	59.5	48	71	59.5	49	74	61.5	50	80	65.0	54	86	70.0	57	84	70.5	55	84	69.5	56	85	70.5
05/10	57	94	75.5	56	88	72.0	53	75	64.0	51	68	59.5	50	69	59.5	50	70	60.0	49	80	64.5	52	82	67.0	55	78	66.5	55	79	67.0	54	83	68.5	56	87	71.5
05/11	56	88	72.0	56	69	62.5	50	66	58.0	48	66	57.0	48	72	60.0	48	80	64.0	53	79	66.0	54	71	62.5	53	77	65.0	53	78	65.5	54	84	69.0	57	86	71.5
05/12	54	71	62.5	56	66	61.0	48	64	56.0	48	69	58.5	48	81	64.5	53	77	65.0	53	70	61.5	49	69	59.0	51	78	64.5	54	84	69.0	56	85	70.5	59	87	73.0
05/13	54	62	58.0	54	64	59.0	49	68	58.5	49	81	65.0	53	77	65.0	54	69	61.5	49	67	58.0	47	73	60.0	57	83	70.0	56	88	72.0	59	88	73.5	59	87	73.0
05/14	53	62	57.5	53	63	58.0	48	79	63.5	51	75	63.0	53	69	61.0	49	66	57.5	46	71	58.5	47	75	61.0	55	84	69.5	55	87	71.0	57	88	72.5	59	90	74.5
05/15	52	66	59.0	51	78	64.5	52	78	65.0	54	69	61.5	49	65	57.0	46	72	59.0	48	75	61.5	51	79	65.0	58	88	73.0	59	88	73.5	59	86	72.5	61	87	74.0
05/16	50	79	64.5	56	73	64.5	54	68	61.0	49	64	56.5	46	74	60.0	49	75	62.0	51	81	66.0	51	81	66.0	56	87	71.5	56	88	72.0	59	89	74.0	60	86	73.0
05/17	55	75	65.0	59	71	65.0	49	66	57.5	46	73	59.5	48	75	61.5	49	80	64.5	49	76	62.5	49	80	64.5	54	83	68.5	57	86	71.5	60	89	74.5	61	89	75.0
05/18	58	72	65.0	53	63	58.0	44	73	58.5	48	76	62.0	49	78	63.5	49	78	63.5	50	83	66.5	54	85	69.5	59	88	73.5	60	92	76.0	60	92	76.0	63	92	77.5
05/19	49	60	54.5	46	73	59.5	47	75	61.0	50	81	65.5	49	78	63.5	49	84	66.5	54	87	70.5	58	90	74.0	64	94	79.0	63	96	79.5	63	96	79.5	64	95	79.5
05/20	45	74	59.5	49	77	63.0	50	82	66.0	49	77	63.0	50	85	67.5	54	90	72.0	59	93	76.0	62	96	79.0	63	96	79.5	63	100	81.5	63	92	77.5	61	87	74.0
05/21	49	74	61.5	54	81	67.5	50	76	63.0	50	85	67.5	54	91	72.5	60	97	78.5	63	97	80.0	65	99	82.0	67	101	84.0	63	96	79.5	63	93	78.0	61	87	74.0
05/22	53	84	68.5	56	76	66.0	50	85	67.5	55	93	74.0	61	98	79.5	65	99	82.0	70	101	85.5	70	103	86.5	69	101	85.0	62	89	75.5	59	86	72.5	61	88	74.5
05/23	55	77	66.0	54	84	69.0	56	91	73.5	61	97	79.0	66	100	83.0	67	103	85.0	69	105	87.0	69	94	81.5	62	87	74.5	60	91	75.5	60	84	72.0	59	86	72.5
05/24	54	85	69.5	63	92	77.5	63	98	80.5	65	100	82.5	66	101	83.5	67	104	85.5	69	96	82.5	61	83	72.0	59	87	73.0	60	86	73.0	58	81	69.5	60	87	73.5
05/25	61	93	77.0	67	99	83.0	67	101	84.0	66	102	84.0	68	103	85.5	67	100	83.5	63	86	74.5	57	78	67.5	58	88	73.0	61	87	74.0	61	90	75.5	64	94	79.0
05/26	67	99	83.0	65	99	82.0	67	100	83.5	67	102	84.5	68	100	84.0	62	78	70.0	56	79	67.5	57	79	68.0	59	91	75.0	60	91	75.5	62	90	76.0	61	88	74.5
05/27	65	96	80.5	66	99	82.5	67	103	85.0	68	102	85.0	59	74	66.5	55	80	67.5	57	81	69.0	57	83	70.0	59	85	72.0	61	84	72.5	58	84	71.0	58	86	72.0
05/28	66	99	82.5	68	101	84.5	67	101	84.0	58	71	64.5	54	80	67.0	58	80	69.0	57	89	73.0	60	92	76.0	63	89	76.0	61	90	75.5	60	88	74.0	60	88	74.0
05/29	68	100	84.0	68	98	83.0	59	69	64.0	54	79	66.5	57	78	67.5	55	87	71.0	60	89	74.5	61	89	75.0	62	88	75.0	60	90	75.0	60	84	72.0	57	83	70.0
05/30	66	100	83.0	66	74	70.0	53	81	67.0	59	83	71.0	59	91	75.0	62	94	78.0	63	92	77.5	60	84	72.0	59	83	71.0	57	85	71.0	57	84	70.5	58	90	74.0
05/31	58	73	65.5	58	85	71.5	59	88	73.5	60	95	77.5	62	97	79.5	63	96	79.5	62	87	74.5	55	78	66.5	56	83	69.5	56	81	68.5	59	90	74.5	63	93	78.0

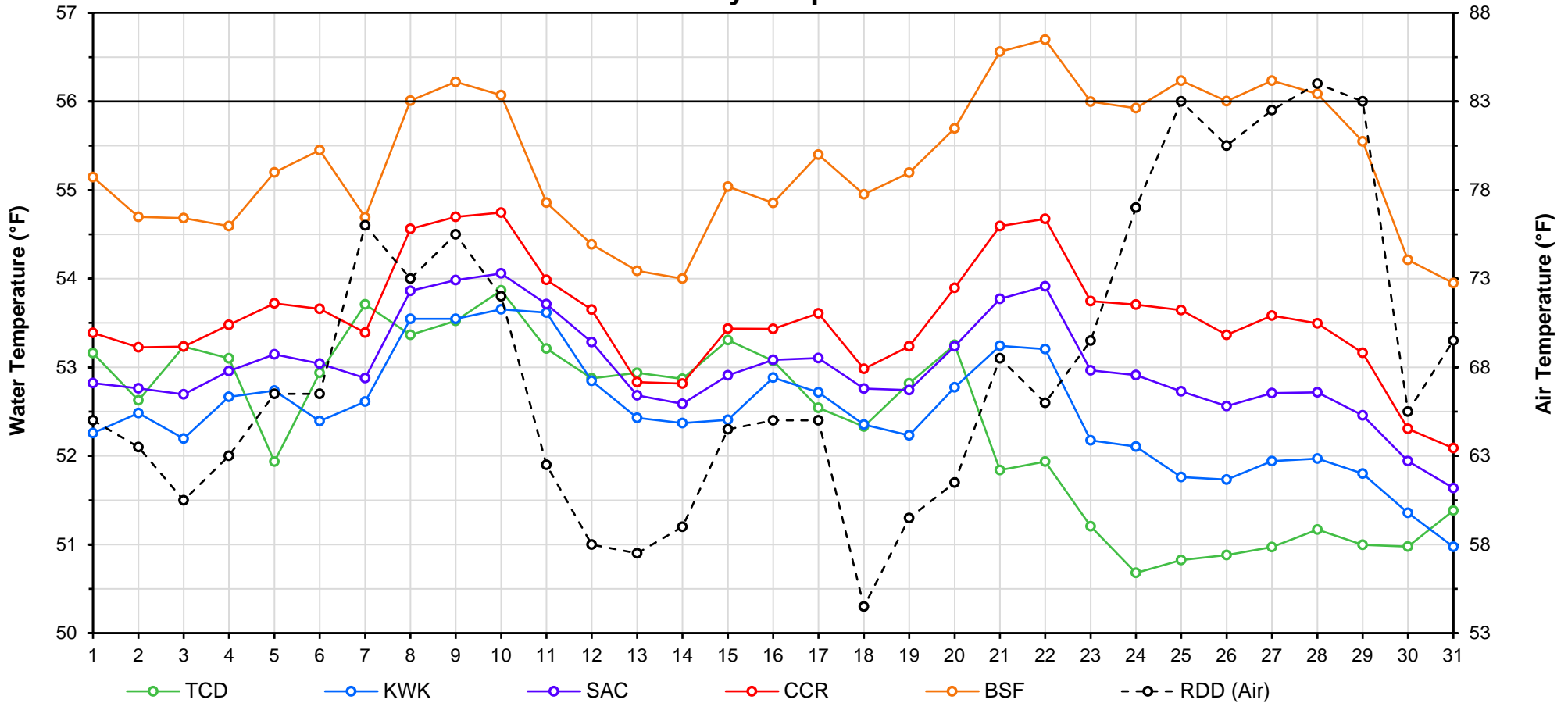
Web Links

- [10-Day Min/Max Forecast](#)
- [Previous Days Min/Max Actuals](#)

Legend

- NR = Forecasted temperatures not recorded
- 100** = Previous day actual temperatures in red and bolded indicate a record temperature for that date

Mean Daily Temperatures



Station Details			
Code	Body of Water	Location ¹	CDEC Link
TCD	N/A	Shasta Power Plant	N/A
SHD	Sacramento River	0.3 miles downstream of Shasta Power Plant	Click Here
SPP	N/A	Spring Creek Power Plant	N/A
KWK	Sacramento River	0.8 miles downstream of Keswick Dam	Click Here
SAC	Sacramento River	4.8 miles downstream of Keswick Dam	Click Here
CCR	Sacramento River	9.7 miles downstream of Keswick Dam	Click Here
BSF	Sacramento River	25 miles downstream of Keswick Dam	Click Here
JLF	Sacramento River	34 miles downstream of Keswick Dam	Click Here
BND	Sacramento River	41 miles downstream of Keswick Dam	Click Here
RDB	Sacramento River	58 miles downstream of Keswick Dam	Click Here
IGO	Clear Creek	7.3 miles downstream of Whiskeytown Dam	Click Here
LWS	Trinity River	1.1 miles downstream of Lewiston Dam	Click Here
DGC ²	Trinity River	19 miles downstream of Lewiston Dam	Click Here
NFH ³	Trinity River	38 miles downstream of Lewiston Dam	Click Here

Temperature Control Point		
Point	Temp. (°F)	Begin Date
BSF	56.0	5/15/2019

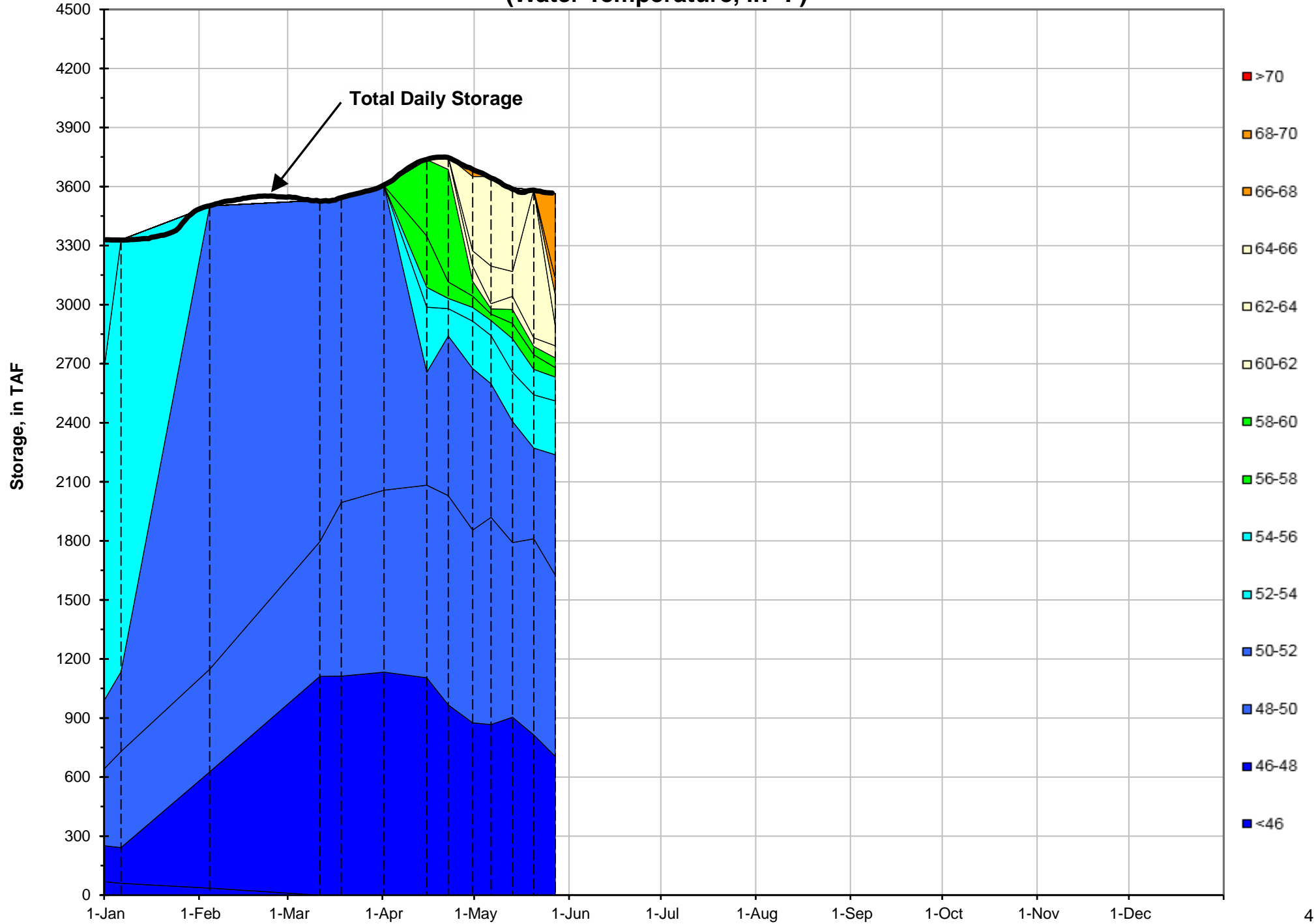
Notes

¹ Distances are approximate

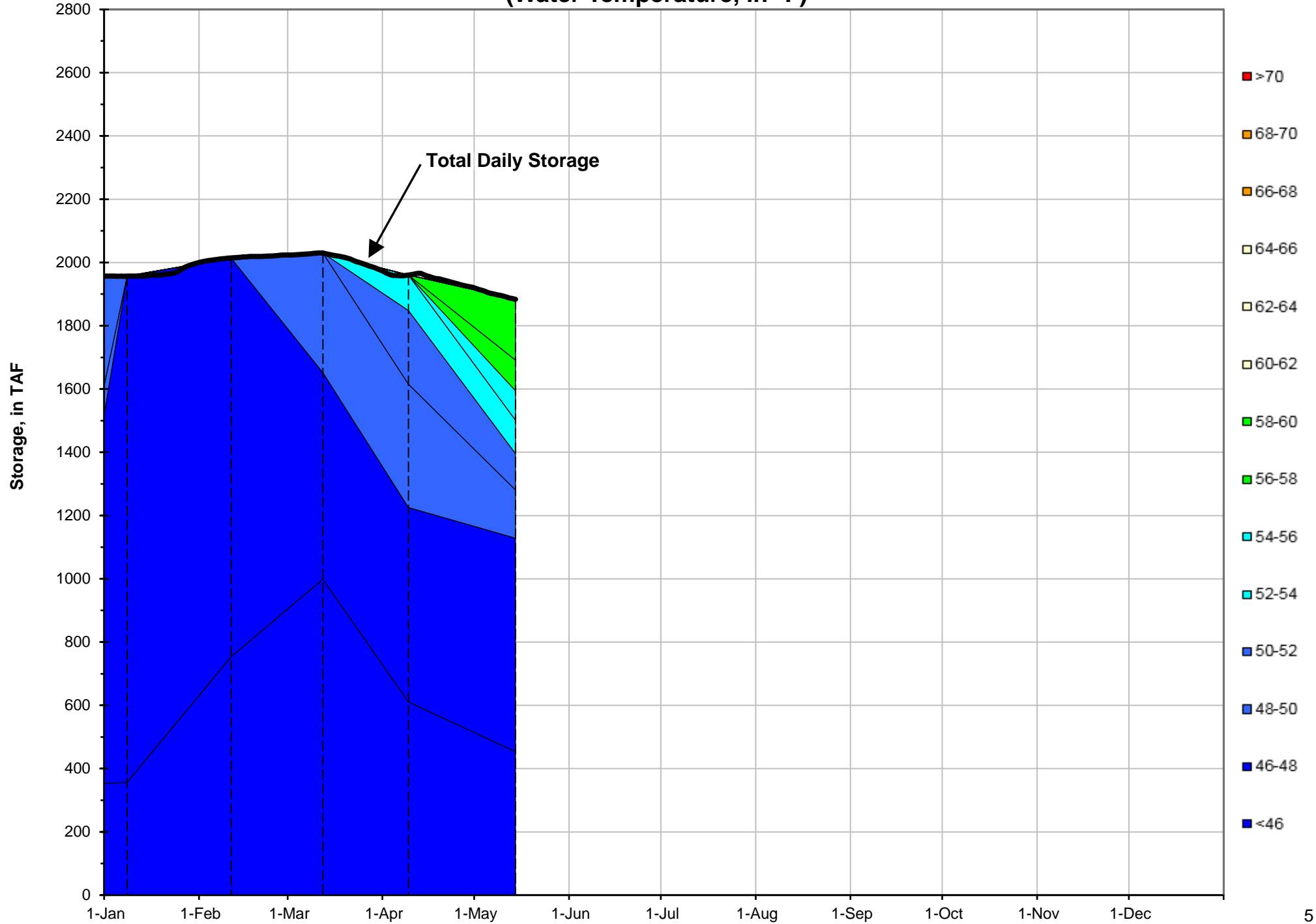
² DGC is only reported in September

³ NFH is only reported in October, November and December

Shasta Lake Isothermobaths - 2020 (Water Temperature, in °F)



Trinity Lake Isothermobaths - 2020 (Water Temperature, in °F)



Whiskeytown Lake Isothermobaths - 2020 (Water Temperature, in °F)

