

Northern CVP Water Temperature Report

May - 2018

Page	Description
1	- Mean Daily Water Temperature, Release Flow Rates and Air Temperatures with Monthly Averages
2	- Redding 10-Day Forecasted Air Temperatures
3	- Sacramento River Mean Daily Water Temperature, Air Temperature and 10-Day Forecasted Air Temperature Plot - Water Temperature Measuring Station Details - Temperature Control Point Details
4	- Daily Maximum and 7DADM
5	- Shasta Lake Isothermobaths Plot
6	- Trinity Lake Isothermobaths Plot
7	- Whiskeytown Lake Isothermobaths Plot
x	- TCD Configuration (External Link)



All Data in this Report is Preliminary and Subject to Change

DATE	Mean Daily Water Temperatures (°F)													Mean Daily Release (CFS)			Mean Daily Air Temperatures (°F)			
	TCD ¹	SHD	SPP ¹	KWK	SAC	CCR	BSF ²	JLF	BND	RDB	IGO	LWS	----- ³	Shasta Generation	Spring Creek P.P.	Keswick Total	RDD	BSF	RDB	LWS
Apr	51.0	50.1	49.0	51.5	52.1	53.0	54.8	55.8	56.1	57.1	50.7	50.4	-	3423	137	3836	59.5	58.2	59.7	51.9
05/01	50.6	49.6	49.7	50.9	51.4	52.0	53.9	55.3	55.7	57.0	51.9	49.9	-	6228	30	6924	66.5	63.9	64.5	52.6
05/02	50.4	49.5	49.6	51.0	51.5	52.2	54.4	55.8	56.1	57.2	52.2	50.3	-	6674	21	7099	68.5	64.5	65.5	57.4
05/03	50.3	49.5	49.8	51.0	51.6	52.3	54.7	56.2	56.5	57.8	52.5	50.4	-	6705	14	7094	65.0	63.0	64.1	60.2
05/04	50.6	49.7	49.9	50.9	51.5	52.3	54.7	56.4	56.9	58.3	52.8	50.3	-	8065	14	7095	69.0	66.6	67.4	61.8
05/05	50.5	49.6	49.3	50.9	51.3	51.9	54.1	55.8	56.4	57.9	52.5	50.3	-	7222	98	7839	71.5	66.3	68.0	62.8
05/06	50.5	49.7	50.0	50.9	51.4	52.2	54.5	56.0	56.3	57.3	53.0	50.8	-	7277	14	7841	69.0	64.8	64.7	63.2
05/07	51.2	50.2	50.0	51.1	51.7	52.4	54.6	56.3	56.7	58.1	52.9	50.6	-	7669	14	8085	69.5	67.8	69.7	62.5
05/08	51.7	50.8	49.3	51.4	51.9	52.5	54.8	56.6	57.1	58.5	53.2	50.8	-	8886	185	8339	71.5	68.7	71.2	62.8
05/09	51.6	50.6	49.9	52.0	52.5	53.2	55.4	57.1	57.6	58.9	53.3	51.1	-	8018	43	8334	70.5	69.4	69.3	64.0
05/10	51.8	50.7	50.0	52.1	52.6	53.2	55.3	56.9	57.4	58.8	52.7	50.9	-	7898	16	8358	68.5	67.4	69.8	58.7
05/11	51.2	50.3	49.5	52.0	52.6	53.2	55.0	56.4	56.9	57.9	52.8	51.0	-	8253	105	8357	70.0	68.8	69.6	57.3
05/12	50.7	49.8	50.4	51.8	52.5	53.2	55.3	56.7	57.1	58.2	52.9	51.4	-	7961	14	8664	71.0	68.3	71.3	59.2
05/13	50.7	49.7	50.2	51.3	52.0	52.7	55.0	56.6	57.1	58.6	53.3	50.9	-	7856	19	8636	69.0	65.9	67.3	62.5
05/14	50.9	50.0	50.3	51.2	51.8	52.5	54.8	56.6	57.2	58.7	53.6	50.9	-	8434	14	8633	71.0	68.3	68.7	64.3
05/15	50.9	50.0	50.3	51.4	52.0	52.7	55.0	56.8	57.3	58.8	53.9	50.9	-	8173	14	8634	69.5	65.9	66.3	60.0
05/16	51.1	?	50.2	50.3	51.3	51.7	52.3	54.5	56.2	56.8	58.2	53.1	-	9386	14	9168	65.5	62.3	62.5	59.1
05/17	52.0	50.9	50.3	51.1	51.7	52.3	54.4	55.9	56.3	57.6	53.8	50.8	-	9960	14	9390	73.0	69.5	70.3	63.0
05/18	52.4	51.5	50.4	52.1	52.5	53.0	54.9	56.6	57.0	58.4	53.9	50.7	-	8980	14	9283	75.5	71.5	73.4	64.1
05/19	52.2	51.2	50.4	52.9	53.4	54.0	55.9	57.5	57.9	59.1	53.9	50.8	-	8713	14	9243	71.5	69.6	70.4	61.8
05/20	51.4	50.6	50.5	52.7	53.3	53.9	56.0	57.7	58.2	59.5	54.1	50.9	-	9223	14	9288	70.0	66.3	65.1	60.6
05/21	51.2	50.3	50.5	52.1	52.9	53.7	55.8	57.4	57.9	59.4	54.1	51.1	-	9637	14	9472	73.5	71.9	72.3	62.7
05/22	51.0	?	50.1	50.6	51.7	52.4	53.1	55.4	57.2	57.8	54.5	51.3	-	8960	14	9498	74.5	70.9	70.5	65.3
05/23	51.2	?	50.1	50.6	51.7	52.3	53.0	55.4	57.2	57.8	54.2	51.2	-	8651	14	9502	73.0	69.6	67.9	67.1
05/24	51.2	50.3	50.5	51.5	52.1	52.7	54.8	56.6	57.2	58.8	54.1	51.3	-	8912	14	9496	72.0	69.0	68.3	67.6
05/25	51.2	50.4	50.5	51.4	51.6	52.0	53.2	54.6	55.2	56.6	52.1	50.8	-	9466	14	9551	60.5	56.9	56.8	54.3
05/26	51.2	50.2	50.5	51.1	51.7	52.2	53.9	54.9	55.0	55.4	54.0	50.8	-	9006	14	9499	66.5	63.4	63.0	59.2
05/27	51.3	50.4	50.5	51.6	52.2	52.8	54.9	56.4	56.8	57.9	54.6	50.5	-	8833	14	9452	74.5	70.8	73.3	62.8
05/28	51.2	50.2	50.7	51.9	52.6	53.3	55.5	57.3	57.9	59.3	55.1	51.0	-	8848	14	9410	82.0	77.5	81.0	68.1
05/29	51.2	50.2	50.7	51.8	52.5	53.2	55.6	57.5	58.1	59.9	55.3	51.3	-	9101	14	9409	81.5	76.3	80.0	67.6
05/30	51.2	50.3	50.8	51.8	52.4	53.1	55.4	57.2	57.8	59.5	55.2	51.5	-	9031	14	9403	72.0	68.7	69.8	64.8
05/31	51.6	50.4	50.7	51.7	52.2	52.8	54.7	56.4	57.0	58.5	53.4	51.5	-	9064	14	8917	64.5	62.3	61.1	56.2
May	51.2	50.2	50.2	51.6	52.1	52.8	54.9	56.5	57.0	58.4	53.5	50.9	-	8422	27	8707	70.6	67.6	68.5	61.7

Total CFS	261090	839	269913
Total AF	517861	1664	535361

Legend

- ? = 1-9 hours of data missing (Average includes estimations)
- ! = 10 or more hours of data missing (Average not calculated)
- # = Station out of service
- ↑ = Record high air temperature
- ↓ = Record low air temperature
- ☐ = Monthly Averages

Notes

- ¹ Temperatures are weighted averages based on individual penstock flow and temperature
- Highlighted cells in the TCD column indicate a TCD change was made on that day
- ² Current control point (see page 3 for more details)
- ³ Column not used this month

D A T E	Redding (RDD) Daily Air Temperatures (°F)																																			
	Actual			Forecasted																																
	Previous Day			Current Day			1 Day			2 Days			3 Days			4 Days			5 Days			6 Days			7 Days			8 Days			9 Days			10 Days		
	↓	↑	Avg	↓	↑	Avg	↓	↑	Avg	↓	↑	Avg	↓	↑	Avg	↓	↑	Avg	↓	↑	Avg	↓	↑	Avg	↓	↑	Avg	↓	↑	Avg	↓	↑	Avg	↓	↑	Avg
05/01	46	74	60.0	55	80	67.5	50	84	67.0	51	84	67.5	53	83	68.0	57	84	70.5	52	83	67.5	54	89	71.5	60	92	76.0	59	92	75.5	59	88	73.5	57	82	69.5
05/02	54	79	66.5	54	84	69.0	51	84	67.5	53	84	68.5	55	84	69.5	53	87	70.0	54	90	72.0	56	88	72.0	54	85	69.5	56	87	71.5	54	85	69.5	58	86	72.0
05/03	54	83	68.5	49	83	66.0	55	84	69.5	57	83	70.0	55	83	69.0	54	90	72.0	56	87	71.5	56	84	70.0	58	86	72.0	55	81	68.0	53	78	65.5	55	77	66.0
05/04	49	81	65.0	52	83	67.5	57	83	70.0	54	83	68.5	54	90	72.0	58	86	72.0	55	80	67.5	53	85	69.0	58	88	73.0	56	85	70.5	54	80	67.0	53	81	67.0
05/05	54	84	69.0	59	82	70.5	54	83	68.5	54	89	71.5	57	89	73.0	55	81	68.0	53	86	69.5	55	88	71.5	61	95	78.0	61	96	78.5	59	89	74.0	55	78	66.5
05/06	58	85	71.5	59	90	74.5	58	86	72.0	55	84	69.5	54	88	71.0	55	91	73.0	57	94	75.5	59	93	76.0	63	92	77.5	59	91	75.0	58	90	74.0	60	90	75.0
05/07	57	81	69.0	54	86	70.0	55	81	68.0	53	87	70.0	55	87	71.0	56	93	74.5	59	95	77.0	60	95	77.5	59	94	76.5	60	92	76.0	60	90	75.0	60	90	75.0
05/08	51	88	69.5	56	81	68.5	53	85	69.0	54	86	70.0	56	91	73.5	56	90	73.0	57	90	73.5	57	85	71.0	59	87	73.0	58	87	72.5	57	86	71.5	59	88	73.5
05/09	55	88	71.5	54	83	68.5	52	84	68.0	53	82	67.5	53	86	69.5	55	83	69.0	54	84	69.0	55	84	69.5	56	85	70.5	54	88	71.0	58	90	74.0	59	88	73.5
05/10	58	83	70.5	54	84	69.0	54	82	68.0	55	86	70.5	54	85	69.5	55	84	69.5	54	83	68.5	52	81	66.5	55	80	67.5	55	85	70.0	59	89	74.0	60	91	75.5
05/11	52	85	68.5	60	81	70.5	54	86	70.0	54	84	69.0	55	85	70.0	54	83	68.5	53	80	66.5	52	76	64.0	58	83	70.5	57	82	69.5	57	86	71.5	59	87	73.0
05/12	60	80	70.0	59	86	72.5	54	83	68.5	55	83	69.0	55	82	68.5	52	79	65.5	52	80	66.0	54	82	68.0	63	90	76.5	62	91	76.5	60	91	75.5	62	92	77.0
05/13	57	85	71.0	56	84	70.0	55	85	70.0	55	81	68.0	54	79	66.5	53	79	66.0	55	84	69.5	59	85	72.0	61	88	74.5	59	87	73.0	59	83	71.0	55	80	67.5
05/14	55	83	69.0	56	86	71.0	55	80	67.5	53	75	64.0	53	82	67.5	55	83	69.0	56	87	71.5	57	83	70.0	59	87	73.0	58	91	74.5	60	89	74.5	59	83	71.0
05/15	55	87	71.0	58	79	68.5	53	76	64.5	53	81	67.0	54	87	70.5	55	84	69.5	57	83	70.0	57	86	71.5	65	94	79.5	63	92	77.5	62	90	76.0	62	92	77.0
05/16	58	81	69.5	59	75	67.0	54	80	67.0	53	87	70.0	55	87	71.0	56	83	69.5	56	82	69.0	57	84	70.5	60	89	74.5	60	92	76.0	62	94	78.0	61	91	76.0
05/17	58	73	65.5	61	82	71.5	54	87	70.5	56	87	71.5	57	82	69.5	55	84	69.5	57	83	70.0	59	83	71.0	62	90	76.0	62	89	75.5	61	91	76.0	62	92	77.0
05/18	61	85	73.0	60	87	73.5	56	86	71.0	54	81	67.5	56	85	70.5	59	85	72.0	57	86	71.5	59	89	74.0	65	96	80.5	66	95	80.5	64	93	78.5	65	95	80.0
05/19	60	91	75.5	59	85	72.0	56	82	69.0	54	90	72.0	59	89	74.0	60	86	73.0	59	88	73.5	60	88	74.0	66	100	83.0	65	97	81.0	65	94	79.5	66	97	81.5
05/20	56	87	71.5	58	81	69.5	54	90	72.0	58	89	73.5	57	85	71.0	56	87	71.5	57	85	71.0	57	84	70.5	59	91	75.0	61	95	78.0	62	94	78.0	63	94	78.5
05/21	58	82	70.0	54	90	72.0	58	88	73.0	57	83	70.0	56	87	71.5	58	80	69.0	54	81	67.5	54	82	68.0	59	89	74.0	60	91	75.5	59	87	73.0	59	90	74.5
05/22	54	93	73.5	61	87	74.0	58	82	70.0	56	79	67.5	55	74	64.5	53	80	66.5	55	88	71.5	57	94	75.5	67	96	81.5	63	95	79.0	61	90	75.5	61	91	76.0
05/23	60	89	74.5	62	81	71.5	54	78	66.0	54	72	63.0	53	81	67.0	54	91	72.5	60	94	77.0	61	93	77.0	65	92	78.5	62	91	76.5	61	91	76.0	62	92	77.0
05/24	62	84	73.0	51	82	66.5	54	67	60.5	52	81	66.5	53	90	71.5	58	97	77.5	62	95	78.5	61	88	74.5	62	92	77.0	60	92	76.0	62	92	77.0	63	93	78.0
05/25	56	88	72.0	47	62	54.5	52	79	65.5	53	92	72.5	59	96	77.5	62	95	78.5	59	86	72.5	55	84	69.5	58	88	73.0	59	90	74.5	60	92	76.0	61	91	76.0
05/26	55	66	60.5	57	78	67.5	53	91	72.0	61	97	79.0	62	94	78.0	58	86	72.0	55	81	68.0	54	84	69.0	59	93	76.0	63	97	80.0	63	96	79.5	64	96	80.0
05/27	55	78	66.5	59	92	75.5	63	97	80.0	64	94	79.0	58	85	71.5	54	74	64.0	53	80	66.5	53	86	69.5	61	94	77.5	63	96	79.5	63	94	78.5	64	94	79.0
05/28	57	92	74.5	67	98	82.5	64	95	79.5	61	85	73.0	55	75	65.0	52	83	67.5	54	87	70.5	56	85	70.5	59	88	73.5	62	93	77.5	62	91	76.5	60	87	73.5
05/29	66	98	82.0	65	95	80.0	59	84	71.5	54	75	64.5	52	86	69.0	57	89	73.0	55	89	72.0	56	86	71.0	64	95	79.5	60	87	73.5	61	86	73.5	61	90	75.5
05/30	65	98	81.5	61	83	72.0	53	75	64.0	52	88	70.0	58	98	78.0	62	96	79.0	56	89	72.5	57	87	72.0	63	95	79.0	62	95	78.5	63	93	78.0	63	94	78.5
05/31	59	85	72.0	56	75	65.5	51	87	69.0	59	97	78.0	63	96	79.5	60	86	73.0	56	85	70.5	56	84	70.0	60	91	75.5	61	92	76.5	62	92	77.0	62	92	77.0

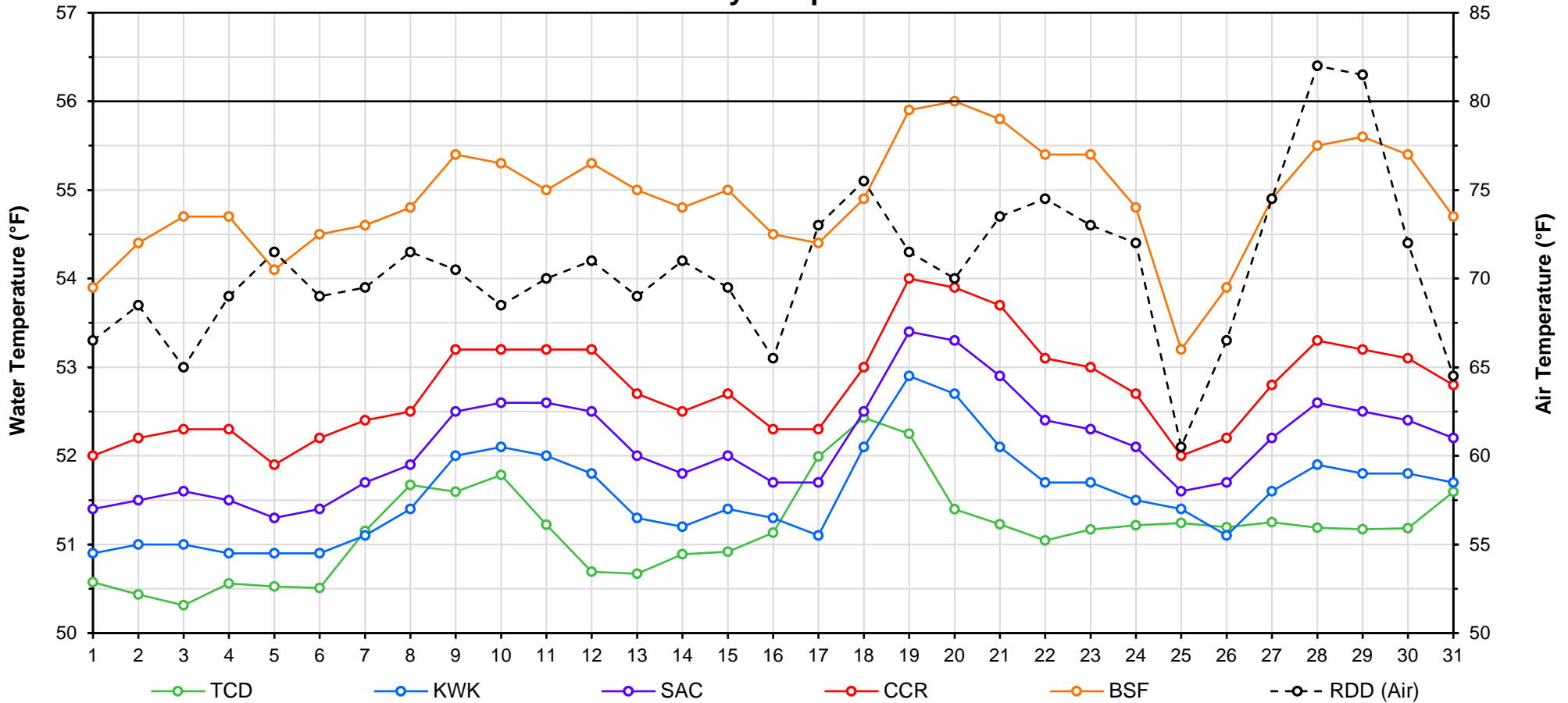
Web Links

- [10-Day Min/Max Forecast](#)
- [Previous Days Min/Max Actuals](#)

Legend

- NR = Forecasted temperatures not recorded
- 100** = Previous day actual temperatures in red and bolded indicate a record temperature for that date

Mean Daily Temperatures



Station Details			
Code	Body of Water	Location ¹	CDEC Link
TCD	N/A	Shasta Power Plant	N/A
SHD	Sacramento River	0.3 miles downstream of Shasta Power Plant	Click Here
SPP	N/A	Spring Creek Power Plant	N/A
KWK	Sacramento River	0.8 miles downstream of Keswick Dam	Click Here
SAC	Sacramento River	4.8 miles downstream of Keswick Dam	Click Here
CCR	Sacramento River	9.7 miles downstream of Keswick Dam	Click Here
BSF	Sacramento River	25 miles downstream of Keswick Dam	Click Here
JLF	Sacramento River	34 miles downstream of Keswick Dam	Click Here
BND	Sacramento River	41 miles downstream of Keswick Dam	Click Here
RDB	Sacramento River	58 miles downstream of Keswick Dam	Click Here
IGO	Clear Creek	7.3 miles downstream of Whiskeytown Dam	Click Here
LWS	Trinity River	1.1 miles downstream of Lewiston Dam	Click Here
DGC ²	Trinity River	19 miles downstream of Lewiston Dam	Click Here
NFH ³	Trinity River	38 miles downstream of Lewiston Dam	Click Here

Temperature Control Point		
Point	Temp. (°F)	Begin Date
BSF	56.0	06/01/2017
BSF	56.0	05/25/2018

Notes

¹ Distances are approximate

² DGC is only reported in September

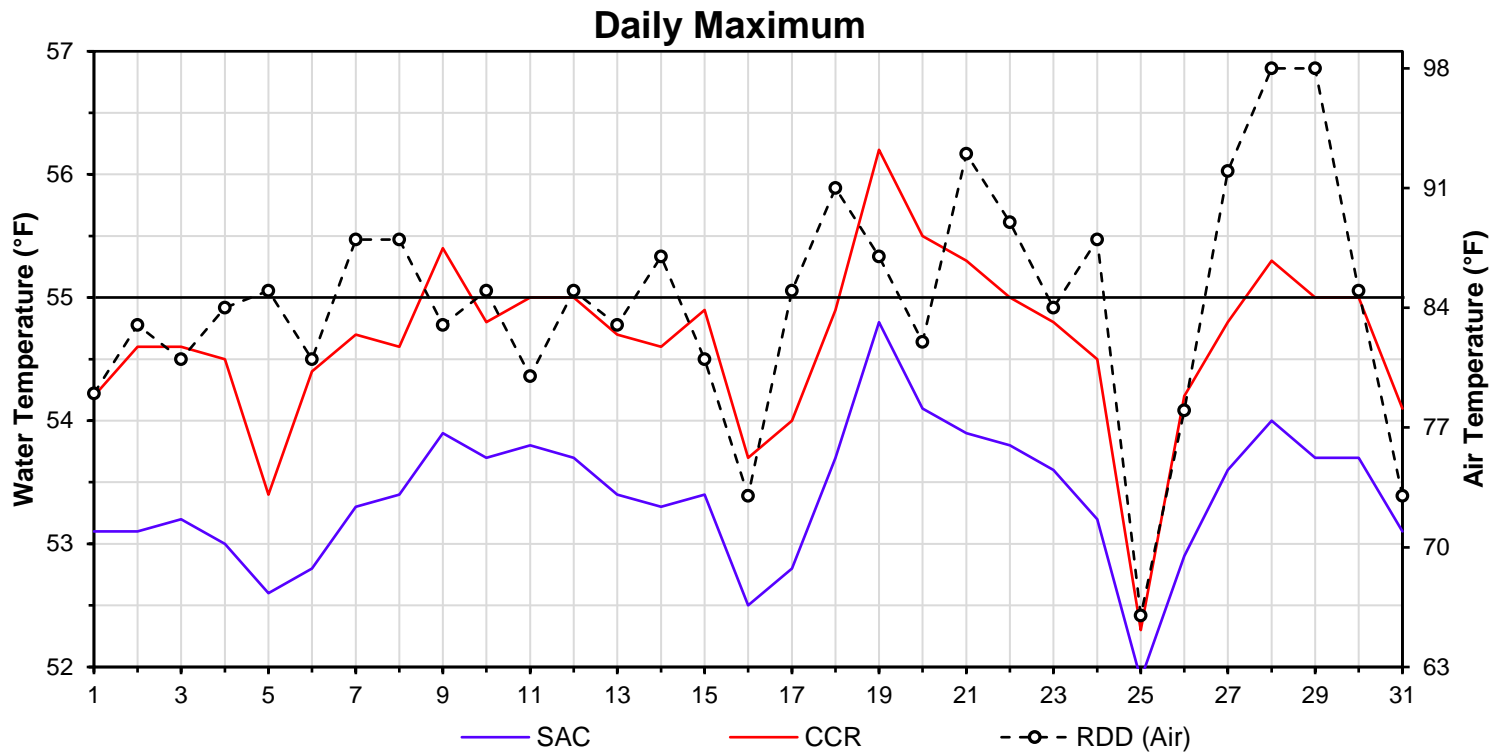
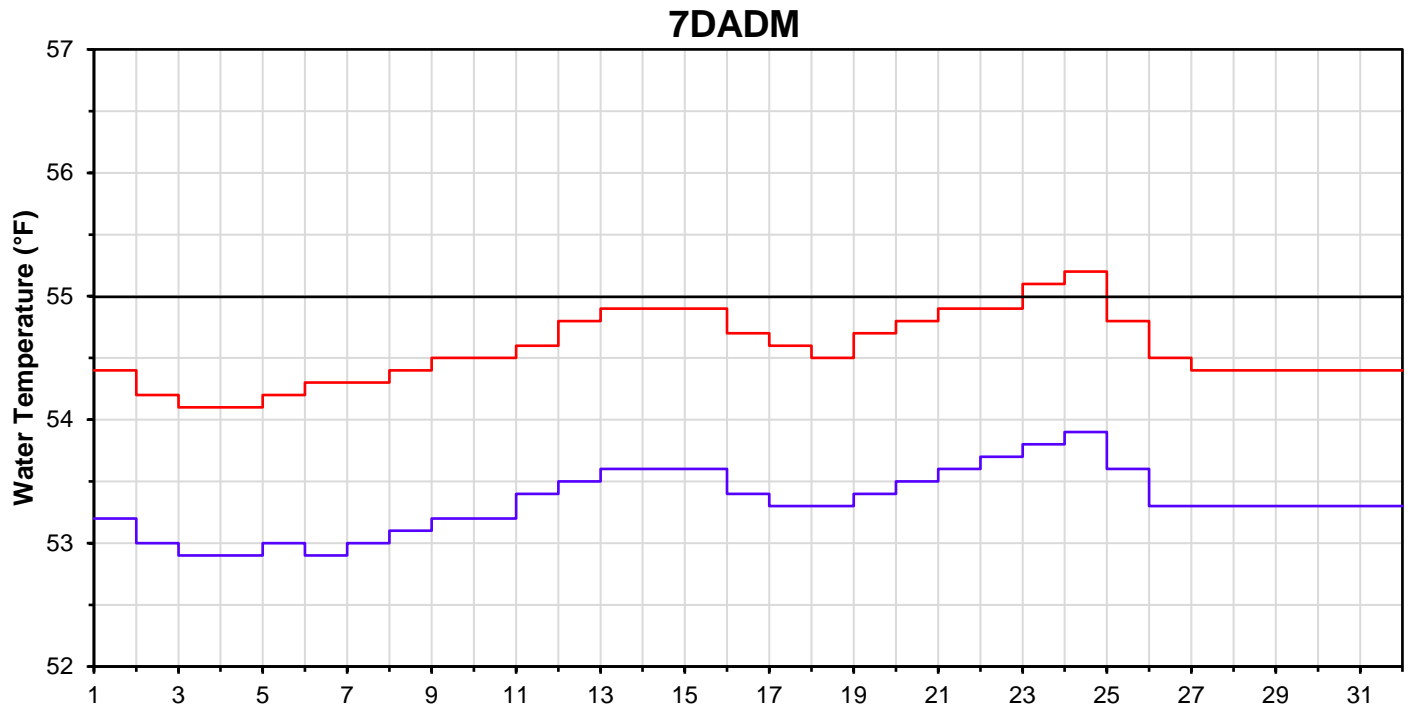
³ NFH is only reported in October, November and December

DATE	Daily Max		7DADM ¹		DAT ²
	SAC	CCR	SAC	CCR	BSF
05/01	53.1	54.2	53.2	54.4	53.9
05/02	53.1	54.6	53.0	54.2	54.4
05/03	53.2	54.6	52.9	54.1	54.7
05/04	53.0	54.5	52.9	54.1	54.7
05/05	52.6	53.4	53.0	54.2	54.1
05/06	52.8	54.4	52.9	54.3	54.5
05/07	53.3	54.7	53.0	54.3	54.6
05/08	53.4	54.6	53.1	54.4	54.8
05/09	53.9	55.4	53.2	54.5	55.4
05/10	53.7	54.8	53.2	54.5	55.3
05/11	53.8	55.0	53.4	54.6	55.0
05/12	53.7	55.0	53.5	54.8	55.3
05/13	53.4	54.7	53.6	54.9	55.0
05/14	53.3	54.6	53.6	54.9	54.8
05/15	53.4	54.9	53.6	54.9	55.0
05/16	52.5	53.7	53.4	54.7	54.5
05/17	52.8	54.0	53.3	54.6	54.4
05/18	53.7	54.9	53.3	54.5	54.9
05/19	54.8	56.2	53.4	54.7	55.9
05/20	54.1	55.5	53.5	54.8	56.0
05/21	53.9	55.3	53.6	54.9	55.8
05/22	53.8	55.0	53.7	54.9	55.4
05/23	53.6	54.8	53.8	55.1	55.4
05/24	53.2	54.5	53.9	55.2	54.8
05/25	51.9	52.3	53.6	54.8	53.2
05/26	52.9	54.2	53.3	54.5	53.9
05/27	53.6	54.8	53.3	54.4	54.9
05/28	54.0	55.3	53.3	54.4	55.5
05/29	53.7	55.0	53.3	54.4	55.6
05/30	53.7	55.0	53.3	54.4	55.4
05/31	53.1	54.1	53.3	54.4	54.7

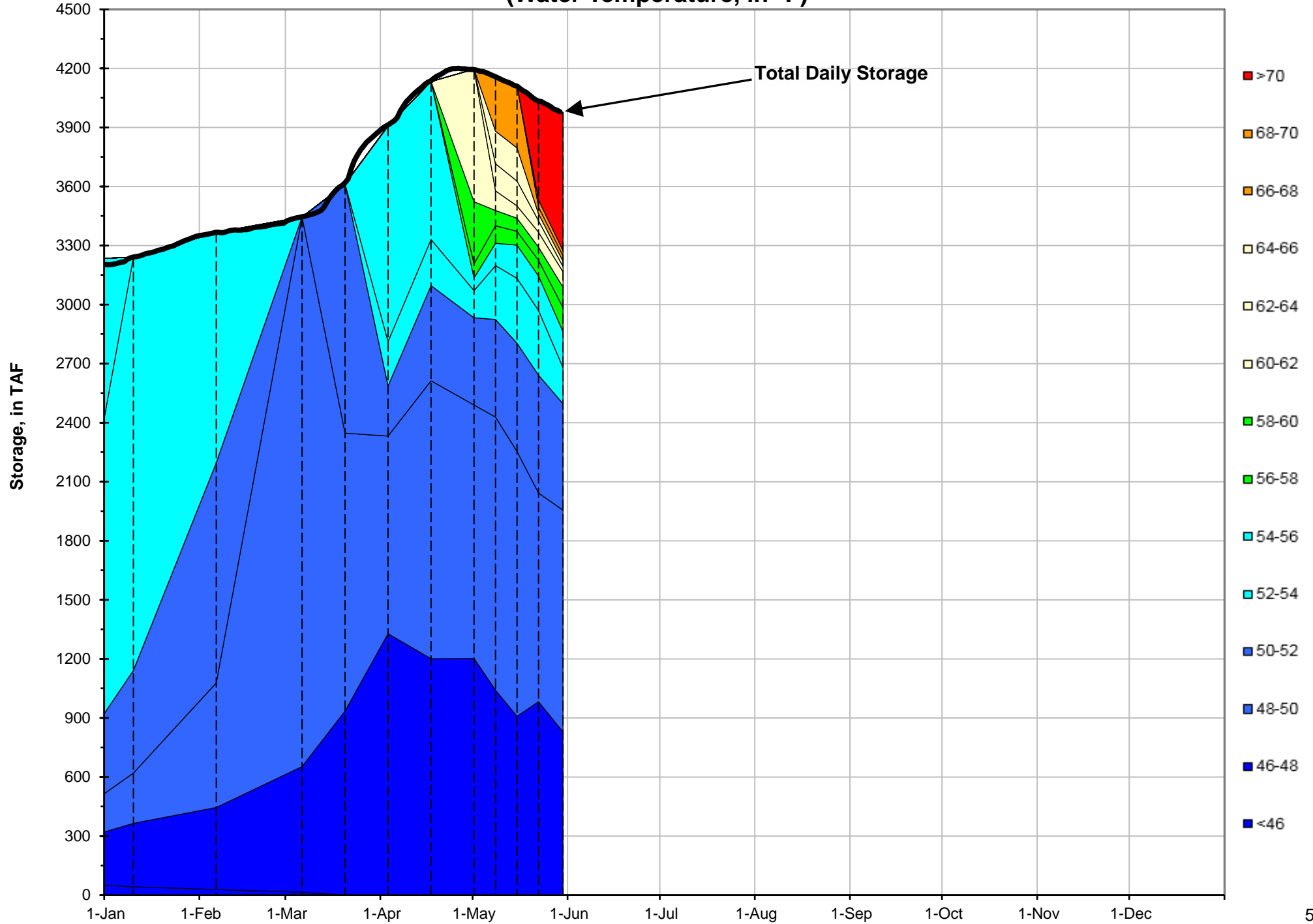
Notes

¹ 7DADM = 7-Day Average
Daily Maximum

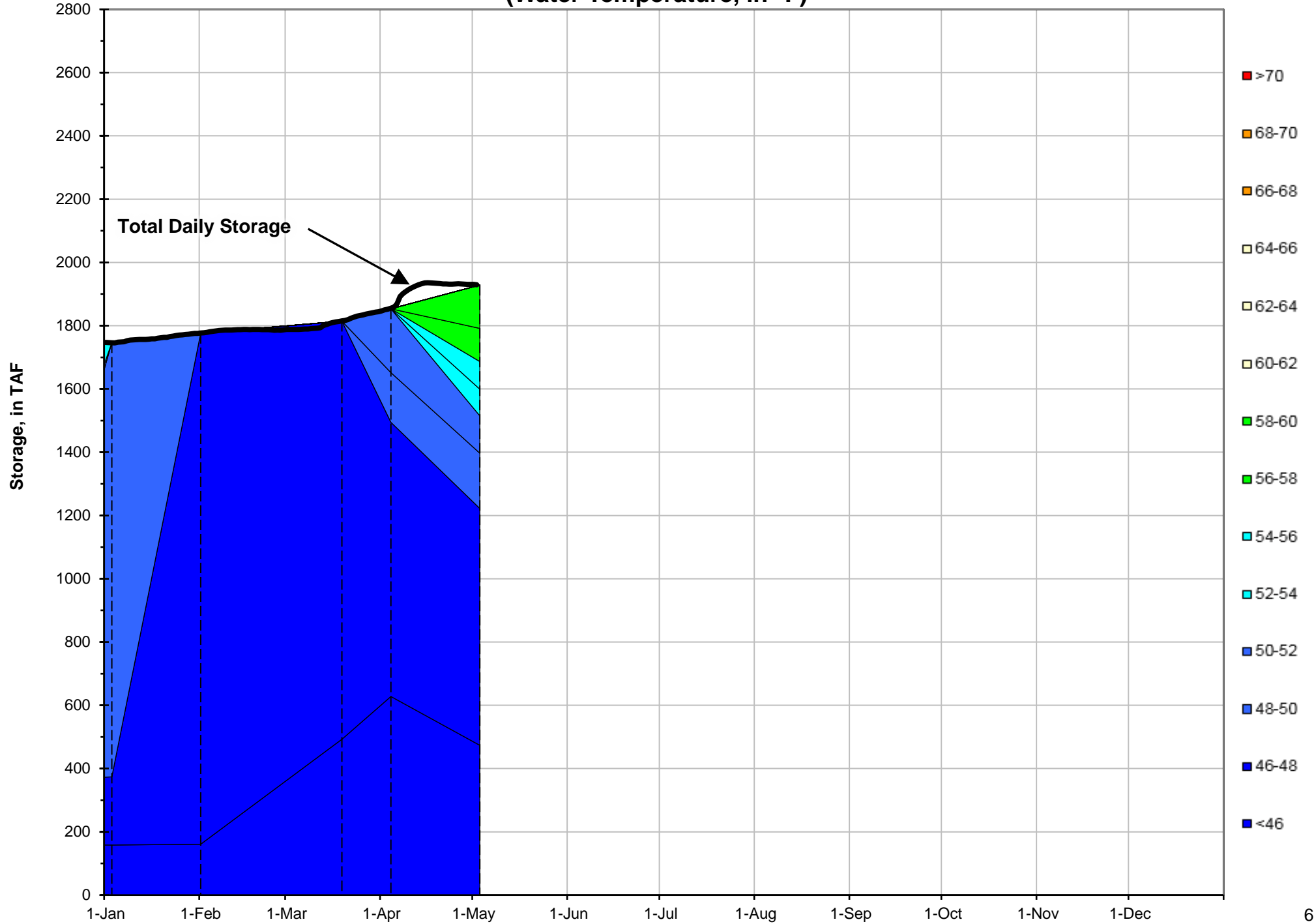
² DAT = Daily Average
Temperature



Shasta Lake Isothermobaths - 2018 (Water Temperature, in °F)



Trinity Lake Isothermobaths - 2018 (Water Temperature, in °F)



Whiskeytown Lake Isothermobaths - 2018 (Water Temperature, in °F)

