

# Northern CVP Water Temperature Report

## May - 2017

Page	Description
1	- Mean Daily Water Temperature, Release Flow Rates and Air Temperatures with Monthly Averages
2	- Redding 10-Day Forecasted Air Temperatures
3	- Sacramento River Mean Daily Water Temperature, Air Temperature and 10-Day Forecasted Air Temperature Plot - Water Temperature Measuring Station Details - Temperature Control Point Details
4	- Lake Shasta Isothermalbaths Plot
5	- Daily Maximum and 7DADM
x	- <a href="#">TCD Configuration</a> (External Link)



All Data in this Report is Preliminary and Subject to Change

DATE	Mean Daily Water Temperatures (°F)													Mean Daily Release (CFS)			Mean Daily Air Temperatures (°F)			
	TCD <sup>1</sup>	SHD	SPP <sup>1</sup>	KWK	SAC	CCR	BSF <sup>2</sup>	JLF	BND	RDB	IGO	LWS	----- <sup>3</sup>	Shasta Generation	Spring Creek P.P.	Keswick Total	RDD	BSF	RDB	LWS
Apr	51.1	50.1	49.2	50.4	50.5	50.7	51.7	52.2	52.5	53.2	50.5	46.6	-	12088	757	16423	57.7	56.6	57.8	49.5
05/01	52.7	51.8	50.0	52.8	53.2	53.8	55.5	56.7	56.9	58.1	52.8	45.5	-	8534	580	9068	73.5	70.5	72.9	61.1
05/02	51.2	50.2	50.2	53.0	53.5	54.1	56.3	58.0	58.2	59.4	53.5	46.0	-	7407	111	7742	74.5	72.2	76.3	63.9
05/03	50.5	49.3	50.6	52.8	53.6	54.6	57.5	59.4	59.7	61.0	54.1	46.2	-	6498	16	6241	↑ 80.5	77.4	77.8	67.1
05/04	50.4	49.3	50.7	51.7	52.8	53.9	57.6	60.0	60.5	62.1	54.2	46.4	-	4939	14	5200	76.0	74.6	76.5	66.8
05/05	50.0	49.5	50.2	52.0	52.8	53.8	57.9	60.3	60.8	62.2	53.6	47.1	-	4285	457	4829	70.0	69.5	68.8	58.5
05/06	50.9	49.4	50.7	52.1	52.9	53.5	56.5	58.3	59.0	60.6	52.7	47.2	-	3909	780	4766	65.5	62.9	63.3	52.5
05/07	52.0	51.1	50.5	51.3	51.6	52.2	54.6	56.0	56.6	58.1	52.4	47.6	-	8544	2853	11736	69.0	66.6	68.6	54.9
05/08	51.6	50.8	50.6	51.9	52.2	52.5	53.8	54.9	55.1	56.2	52.9	46.5	-	9211	2858	12356	75.0	68.2	70.6	59.4
05/09	51.7	50.7	50.5	51.8	52.2	52.8	54.6	56.0	? 56.3	57.4	53.5	46.3	-	9752	3022	12178	74.5	70.4	72.5	63.2
05/10	51.2	50.3	50.6	51.8	52.1	52.6	54.5	56.0	56.4	57.8	53.7	46.1	-	9129	3617	12230	68.5	66.0	66.8	63.1
05/11	51.3	50.3	50.6	51.5	51.7	52.2	53.8	55.3	55.7	57.2	52.6	45.6	-	8624	3419	12182	62.5	61.1	61.7	56.5
05/12	51.3	50.4	50.8	51.2	51.3	51.6	53.0	54.1	54.5	55.5	51.3	45.0	-	8628	3332	12414	57.0	58.2	58.5	49.2
05/13	51.5	50.6	50.7	51.2	51.4	51.7	52.9	53.8	54.0	55.0	51.4	45.0	-	8965	3065	12754	↓ 56.5	55.3	58.0	48.5
05/14	52.5	51.6	50.6	51.5	51.6	52.0	53.2	54.0	54.3	55.3	51.9	45.2	-	10082	2856	12149	64.5	59.5	60.2	50.3
05/15	52.3	51.2	50.5	52.2	52.4	52.8	54.2	55.1	55.3	56.1	52.1	45.5	-	9565	3424	12107	68.0	64.3	65.5	54.6
05/16	51.2	50.4	50.3	51.8	51.8	52.2	53.2	54.2	54.6	55.6	50.7	45.5	-	8896	3339	12235	57.0	56.8	57.9	52.5
05/17	52.1	51.2	50.2	51.0	51.2	51.7	52.8	? 53.5	53.7	54.6	51.1	45.2	-	9578	3159	12690	60.0	57.5	60.6	51.5
05/18	51.5	50.6	50.0	51.7	52.0	52.4	53.6	? 54.6	54.8	55.8	51.8	45.7	-	10061	2817	12688	68.5	65.2	68.6	57.7
05/19	50.5	49.7	49.9	51.4	51.8	52.4	54.2	55.4	55.8	57.1	52.3	45.8	-	9004	3197	12688	70.5	69.0	72.0	62.7
05/20	50.2	49.4	49.8	50.8	51.2	51.9	53.8	55.3	55.8	57.5	52.7	45.9	-	9023	3152	12692	↑ 76.5	73.3	75.4	65.6
05/21	50.5	49.6	49.7	50.6	50.9	51.5	53.6	55.3	55.8	57.5	52.8	46.0	-	9390	3021	12691	82.5	74.8	77.3	66.5
05/22	50.6	49.7	49.6	50.7	51.0	51.6	53.7	55.4	55.9	57.6	53.0	46.1	-	9173	3001	12105	↑ 80.0	77.1	79.5	68.8
05/23	50.4	49.6	49.7	50.8	51.1	51.7	53.9	55.7	56.3	57.9	53.0	46.2	-	9246	3188	11673	↑ 81.0	76.8	78.1	70.3
05/24	50.8	49.8	49.7	50.8	51.2	51.8	54.2	56.1	56.6	58.3	53.3	46.4	-	9975	1810	10982	78.0	74.7	75.2	69.3
05/25	50.6	49.6	49.9	51.0	51.4	52.0	54.4	56.2	56.7	58.4	52.9	46.5	-	8041	2363	10175	69.5	65.7	65.3	64.0
05/26	50.9	49.9	49.8	51.0	51.4	52.0	54.4	56.2	56.8	58.4	52.9	46.7	-	8885	1288	10067	69.0	65.7	65.7	64.8
05/27	51.2	50.1	50.0	51.0	51.5	52.1	54.4	56.2	56.7	58.4	53.2	? 46.4	-	9044	2278	10069	73.0	68.5	68.3	65.3
05/28	50.9	49.8	50.1	51.4	51.8	52.4	54.7	56.6	57.1	58.8	53.8	46.6	-	8489	2031	10193	77.0	73.3	72.3	67.5
05/29	51.1	49.8	50.0	51.2	51.6	52.2	54.7	56.7	57.3	59.2	54.1	46.6	-	8596	1643	10182	78.5	74.5	74.3	68.4
05/30	51.1	49.9	50.2	51.2	51.5	? 52.0	54.2	56.2	56.9	58.6	53.2	46.4	-	9061	1809	10178	74.0	71.4	70.8	62.4
05/31	51.4	49.9	50.2	51.0	51.4	52.0	54.3	56.1	56.6	58.1	53.7	45.9	-	8290	2298	9844	69.5	66.4	65.3	63.4
May	51.2	50.2	50.2	51.5	51.9	52.5	54.5	56.1	56.5	57.9	52.8	46.1	-	8478	2284	10616	71.0	68.0	69.2	61.0

Total CFS	262824	70798	329104
Total AF	521301	140425	661726

Legend

- ? = 1-9 hours of data missing (Average includes estimations)
- ! = 10 or more hours of data missing (Average not calculated)
- # = Station out of service
- ↑ = Record high air temperature
- ↓ = Record low air temperature
- ☐ = Monthly Averages

Notes

- <sup>1</sup> Temperatures are weighted averages based on individual penstock flow and temperature
- Highlighted cells in the TCD column indicate a TCD change was made on that day
- <sup>2</sup> Current control point (see page 3 for more details)
- <sup>3</sup> Column not used this month

D A T E	Redding (RDD) Daily Air Temperatures (°F)																																			
	Actual			Forecasted																																
	Previous Day			Current Day			1 Day			2 Days			3 Days			4 Days			5 Days			6 Days			7 Days			8 Days			9 Days			10 Days		
	↓	↑	Avg	↓	↑	Avg	↓	↑	Avg	↓	↑	Avg	↓	↑	Avg	↓	↑	Avg	↓	↑	Avg	↓	↑	Avg	↓	↑	Avg	↓	↑	Avg	↓	↑	Avg	↓	↑	Avg
05/01	47	86	66.5	58	88	73.0	59	90	74.5	64	94	79.0	62	92	77.0	60	82	71.0	51	72	61.5	49	72	60.5	59	88	73.5	57	90	73.5	56	84	70.0	58	83	70.5
05/02	58	89	73.5	62	90	76.0	64	95	79.5	62	91	76.5	59	77	68.0	52	71	61.5	48	73	60.5	50	78	64.0	58	83	70.5	59	84	71.5	56	84	70.0	60	87	73.5
05/03	59	90	74.5	72	95	83.5	61	91	76.0	59	77	68.0	52	71	61.5	50	74	62.0	51	80	65.5	52	83	67.5	55	79	67.0	54	81	67.5	55	85	70.0	53	83	68.0
05/04	66	<b>95</b>	80.5	60	91	75.5	56	76	66.0	52	71	61.5	49	75	62.0	50	80	65.0	51	82	66.5	53	74	63.5	50	74	62.0	50	76	63.0	52	79	65.5	51	84	67.5
05/05	60	92	76.0	62	76	69.0	53	74	63.5	51	80	65.5	54	84	69.0	56	88	72.0	53	79	66.0	51	74	62.5	50	77	63.5	51	79	65.0	54	81	67.5	53	81	67.0
05/06	58	82	70.0	57	74	65.5	53	82	67.5	55	88	71.5	55	91	73.0	56	84	70.0	55	75	65.0	49	73	61.0	51	80	65.5	53	79	66.0	54	80	67.0	53	80	66.5
05/07	57	74	65.5	57	83	70.0	55	88	71.5	56	93	74.5	58	86	72.0	56	76	66.0	50	72	61.0	47	76	61.5	52	77	64.5	50	78	64.0	53	79	66.0	53	84	68.5
05/08	57	81	69.0	65	89	77.0	57	93	75.0	58	86	72.0	55	74	64.5	49	71	60.0	46	73	59.5	48	74	61.0	50	72	61.0	50	75	62.5	52	77	64.5	53	81	67.0
05/09	60	90	75.0	54	93	73.5	58	87	72.5	55	73	64.0	48	69	58.5	45	72	58.5	47	73	60.0	48	69	58.5	49	75	62.0	50	78	64.0	54	83	68.5	56	85	70.5
05/10	54	95	74.5	55	85	70.0	55	72	63.5	47	69	58.0	44	71	57.5	47	74	60.5	48	71	59.5	48	70	59.0	50	76	63.0	54	80	67.0	55	87	71.0	60	89	74.5
05/11	54	83	68.5	53	71	62.0	47	68	57.5	44	71	57.5	47	73	60.0	48	72	60.0	49	68	58.5	47	75	61.0	54	82	68.0	57	89	73.0	56	89	72.5	60	89	74.5
05/12	52	73	62.5	47	67	57.0	43	71	57.0	47	74	60.5	47	73	60.0	50	67	58.5	47	75	61.0	51	83	67.0	57	88	72.5	59	89	74.0	60	91	75.5	61	90	75.5
05/13	45	69	57.0	41	70	55.5	47	75	61.0	48	76	62.0	51	65	58.0	44	76	60.0	50	84	67.0	55	91	73.0	59	93	76.0	60	92	76.0	62	93	77.5	62	92	77.0
05/14	<b>41</b>	72	56.5	53	75	64.0	48	76	62.0	52	65	58.5	45	76	60.5	49	85	67.0	56	92	74.0	58	93	75.5	59	93	76.0	61	92	76.5	61	92	76.5	60	89	74.5
05/15	53	76	64.5	54	79	66.5	51	65	58.0	45	78	61.5	50	86	68.0	56	92	74.0	59	95	77.0	61	95	78.0	61	91	76.0	61	91	76.0	62	90	76.0	61	89	75.0
05/16	54	82	68.0	54	64	59.0	45	77	61.0	51	86	68.5	56	93	74.5	59	95	77.0	61	99	80.0	63	101	82.0	62	97	79.5	63	94	78.5	63	94	78.5	60	89	74.5
05/17	50	64	57.0	42	77	59.5	51	86	68.5	56	93	74.5	59	95	77.0	61	98	79.5	64	100	82.0	64	101	82.5	63	94	78.5	61	94	77.5	60	93	76.5	62	93	77.5
05/18	42	78	60.0	54	86	70.0	55	92	73.5	59	94	76.5	60	97	78.5	64	101	82.5	65	102	83.5	65	98	81.5	64	97	80.5	63	96	79.5	62	95	78.5	62	92	77.0
05/19	50	87	68.5	49	91	70.0	58	93	75.5	60	95	77.5	64	101	82.5	64	102	83.0	64	99	81.5	61	93	77.0	60	88	74.0	56	90	73.0	58	91	74.5	60	89	74.5
05/20	49	92	70.5	57	94	75.5	61	97	79.0	64	101	82.5	65	101	83.0	64	94	79.0	59	88	73.5	55	86	70.5	58	88	73.0	61	93	77.0	62	93	77.5	61	90	75.5
05/21	55	<b>98</b>	76.5	69	97	83.0	64	101	82.5	65	102	83.5	63	95	79.0	58	87	72.5	54	84	69.0	56	88	72.0	59	91	75.0	62	93	77.5	62	92	77.0	61	90	75.5
05/22	68	97	82.5	58	101	79.5	65	102	83.5	64	95	79.5	58	89	73.5	55	86	70.5	56	92	74.0	59	97	78.0	62	93	77.5	62	91	76.5	61	91	76.0	60	87	73.5
05/23	58	<b>102</b>	80.0	61	103	82.0	63	94	78.5	57	88	72.5	56	88	72.0	56	92	74.0	57	96	76.5	60	98	79.0	63	94	78.5	62	93	77.5	61	90	75.5	62	92	77.0
05/24	61	<b>101</b>	81.0	64	94	79.0	57	87	72.0	56	87	71.5	55	91	73.0	59	95	77.0	60	99	79.5	64	100	82.0	64	94	79.0	62	89	75.5	63	93	78.0	64	93	78.5
05/25	63	93	78.0	59	83	71.0	56	83	69.5	55	89	72.0	58	95	76.5	63	100	81.5	64	101	82.5	64	98	81.0	61	85	73.0	57	86	71.5	59	89	74.0	60	92	76.0
05/26	58	81	69.5	58	84	71.0	54	90	72.0	56	94	75.0	59	97	78.0	63	99	81.0	63	92	77.5	61	93	77.0	60	89	74.5	60	93	76.5	61	92	76.5	61	92	76.5
05/27	57	81	69.0	NR	90	-	57	94	75.5	60	95	77.5	60	89	74.5	58	86	72.0	59	91	75.0	60	95	77.5	62	93	77.5	62	95	78.5	62	96	79.0	64	95	79.5
05/28	55	91	73.0	59	94	76.5	60	95	77.5	61	88	74.5	59	85	72.0	59	91	75.0	60	94	77.0	59	95	77.0	63	96	79.5	65	97	81.0	64	94	79.0	62	90	76.0
05/29	59	95	77.0	63	94	78.5	59	87	73.0	60	85	72.5	58	88	73.0	59	92	75.5	60	94	77.0	61	95	78.0	64	97	80.5	64	94	79.0	64	95	79.5	62	91	76.5
05/30	62	95	78.5	64	87	75.5	59	80	69.5	58	87	72.5	57	93	75.0	60	94	77.0	59	93	76.0	60	93	76.5	63	95	79.0	61	90	75.5	62	93	77.5	63	92	77.5
05/31	63	85	74.0	60	78	69.0	57	85	71.0	56	92	74.0	58	93	75.5	59	86	72.5	58	91	74.5	60	95	77.5	64	95	79.5	63	92	77.5	63	88	75.5	60	90	75.0

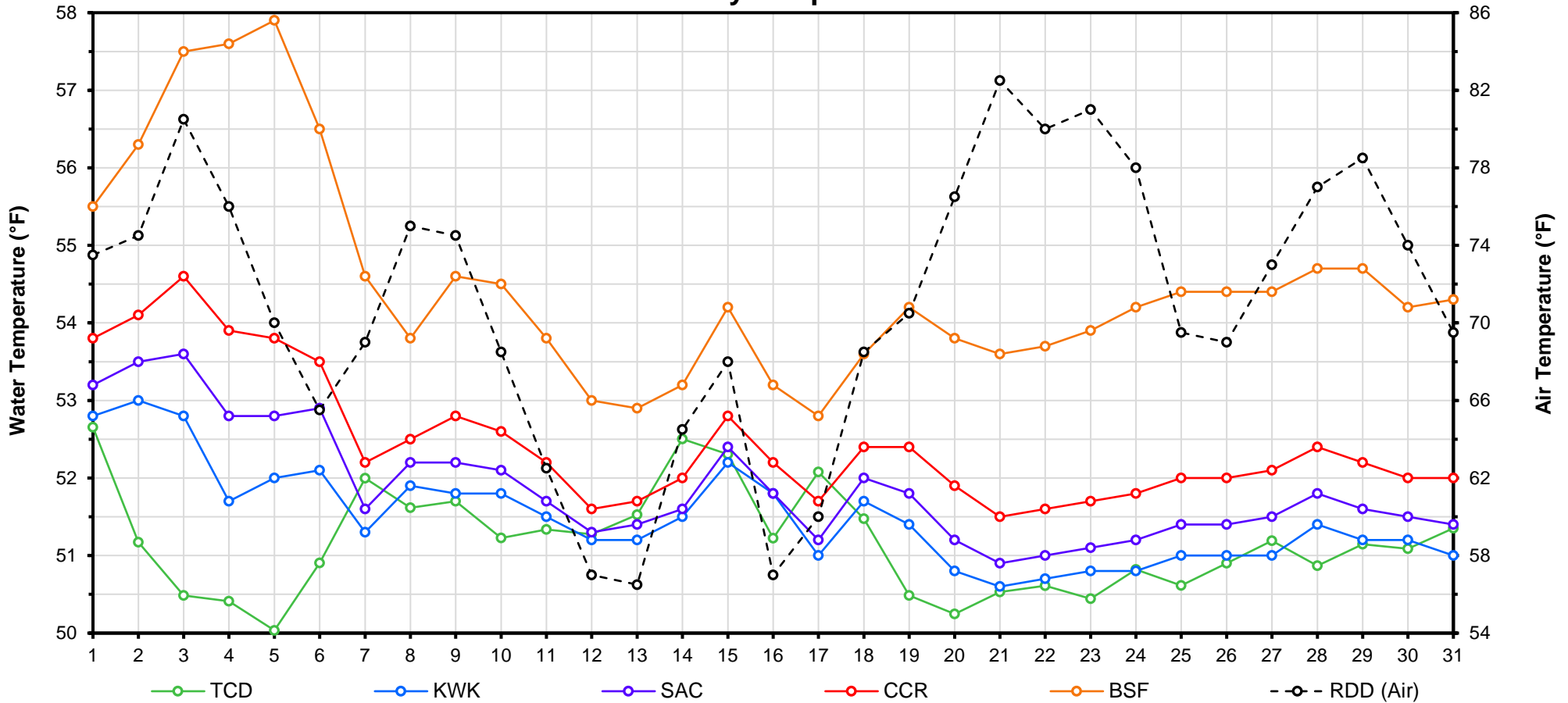
Web Links

- [10-Day Min/Max Forecast](#)
- [Previous Days Min/Max Actuals](#)

Legend

- NR = Forecasted temperatures not recorded
- 100** = Previous day actual temperatures in red and bolded indicate a record temperature for that date

# Mean Daily Temperatures



Station Details			
Code	Body of Water	Location <sup>1</sup>	CDEC Link
TCD	N/A	Shasta Power Plant	N/A
SHD	Sacramento River	0.3 miles downstream of Shasta Power Plant	<a href="#">Click Here</a>
SPP	N/A	Spring Creek Power Plant	N/A
KWK	Sacramento River	0.8 miles downstream of Keswick Dam	<a href="#">Click Here</a>
SAC	Sacramento River	4.8 miles downstream of Keswick Dam	<a href="#">Click Here</a>
CCR	Sacramento River	9.7 miles downstream of Keswick Dam	<a href="#">Click Here</a>
BSF	Sacramento River	25 miles downstream of Keswick Dam	<a href="#">Click Here</a>
JLF	Sacramento River	34 miles downstream of Keswick Dam	<a href="#">Click Here</a>
BND	Sacramento River	41 miles downstream of Keswick Dam	<a href="#">Click Here</a>
RDB	Sacramento River	58 miles downstream of Keswick Dam	<a href="#">Click Here</a>
IGO	Clear Creek	7.3 miles downstream of Whiskeytown Dam	<a href="#">Click Here</a>
LWS	Trinity River	1.1 miles downstream of Lewiston Dam	<a href="#">Click Here</a>
DGC <sup>2</sup>	Trinity River	19 miles downstream of Lewiston Dam	<a href="#">Click Here</a>
NFH <sup>3</sup>	Trinity River	38 miles downstream of Lewiston Dam	<a href="#">Click Here</a>

Temperature Control Point		
Point	Temp. (°F)	Date Range
<b>BSF</b>	<b>56.0</b>	<b>06/17/16 - Current</b>

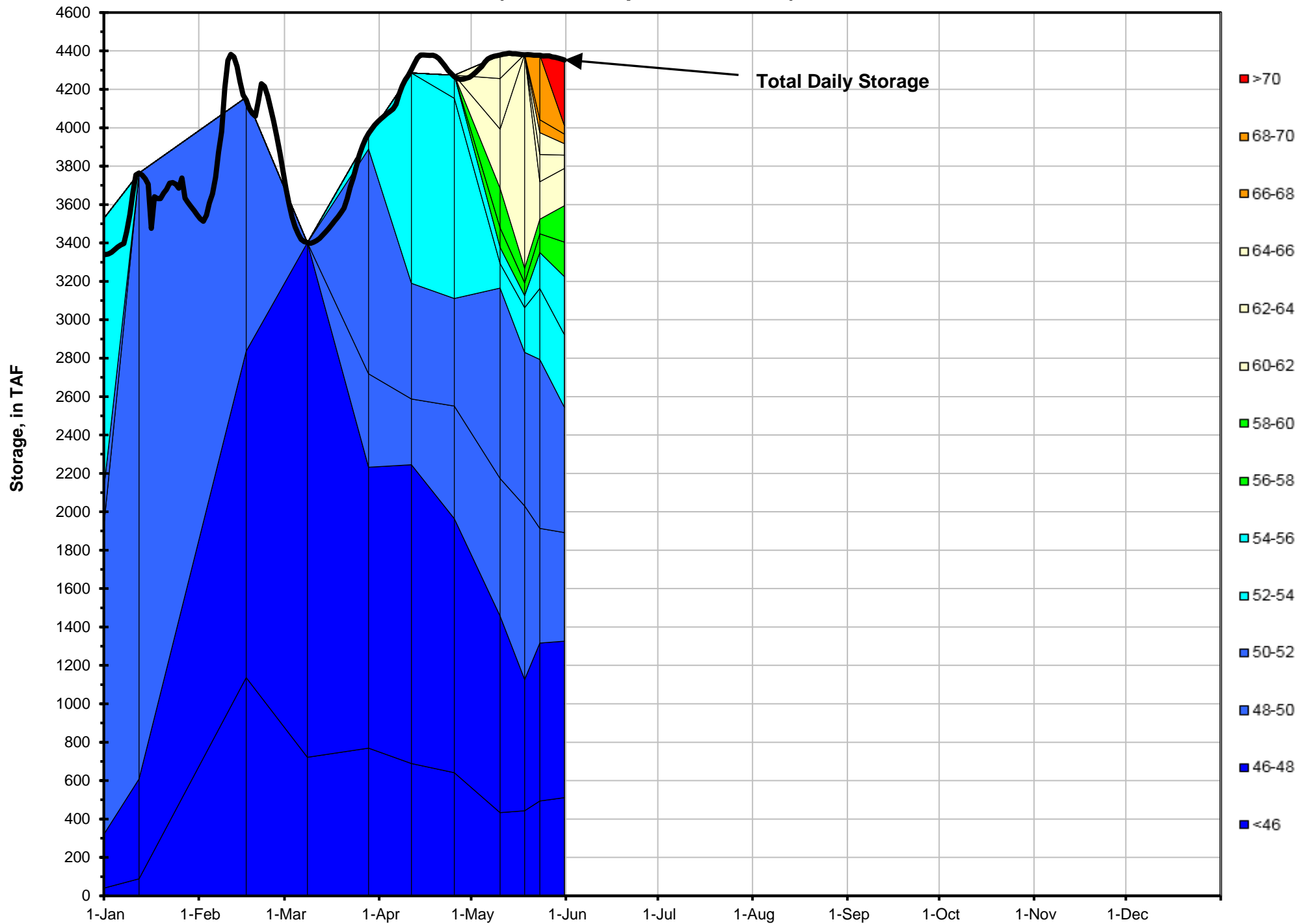
## Notes

<sup>1</sup> Distances are approximate

<sup>2</sup> DGC is only reported in September

<sup>3</sup> NFH is only reported in October, November and December

# Lake Shasta Isothermalbaths - 2017 (Water Temperature, in °F)



DATE	Daily Max		7DADM <sup>1</sup>		DAT <sup>2</sup>
	SAC	CCR	SAC	CCR	BSF
05/01	54.5	55.8	52.3	53.1	55.5
05/02	55.2	56.4	53.0	53.9	56.3
05/03	55.5	57.1	53.7	54.7	57.5
05/04	54.9	56.5	54.2	55.4	57.6
05/05	54.8	56.7	54.5	55.9	57.9
05/06	55.1	56.4	54.9	56.3	56.5
05/07	52.3	53.2	54.6	56.0	54.6
05/08	53.7	54.5	54.5	55.8	53.8
05/09	53.5	54.4	54.3	55.5	54.6
05/10	53.4	54.5	54.0	55.2	54.5
05/11	52.5	53.3	53.6	54.7	53.8
05/12	52.1	52.6	53.2	54.1	53.0
05/13	52.3	53.1	52.8	53.7	52.9
05/14	52.7	53.5	52.9	53.7	53.2
05/15	53.1	54.1	52.8	53.6	54.2
05/16	52.4	52.7	52.6	53.4	53.2
05/17	52.1	53.0	52.5	53.2	52.8
05/18	53.0	53.9	52.5	53.3	53.6
05/19	52.6	53.8	52.6	53.4	54.2
05/20	52.4	53.5	52.6	53.5	53.8
05/21	52.1	53.2	52.5	53.5	53.6
05/22	51.9	52.9	52.4	53.3	53.7
05/23	52.0	53.0	52.3	53.3	53.9
05/24	52.3	53.4	52.3	53.4	54.2
05/25	52.7	53.8	52.3	53.4	54.4
05/26	52.4	53.5	52.3	53.3	54.4
05/27	52.6	53.7	52.3	53.4	54.4
05/28	53.2	54.3	52.4	53.5	54.7
05/29	52.7	53.8	52.6	53.6	54.7
05/30	52.1	52.8	52.6	53.6	54.2
05/31	52.5	53.4	52.6	53.6	54.3

**Notes**

<sup>1</sup> 7DADM = 7-Day Average  
Daily Maximum

<sup>2</sup> DAT = Daily Average  
Temperature

