

Northern CVP Water Temperature Report

May - 2016

Page	Description
1	- Mean Daily Water Temperature, Release Flow Rates and Air Temperatures with Monthly Averages
2	- Redding 10-Day Forecasted Air Temperatures
3	- Sacramento River Mean Daily Water Temperature, Air Temperature and 10-Day Forecasted Air Temperature Plot - Water Temperature Measuring Station Details - Temperature Control Point Details
4	- Lake Shasta Isothermalbaths Plot
x	- TCD Configuration (External Link)



All Data in this Report is Preliminary and Subject to Change

DATE	Mean Daily Water Temperatures (°F)													Mean Daily Release (CFS)			Mean Daily Air Temperatures (°F)			
	TCD ¹	SHD	SPP ¹	KWK	SAC	CCR ²	BSF	JLF	BND	RDB	IGO	LWS	----- ³	Shasta Generation	Spring Creek P.P.	Keswick Total	RDD	BSF	RDB	LWS
Apr	51.9	50.6	51.7	52.4	53.1	53.6	-	57.1	57.5	58.5	52.5	52.2	-	4518	88	4684	64.3	61.1	62.8	55.4
05/01	53.5	51.9	53.9	54.4	55.2	55.8	#	59.4	59.8	60.8	53.4	48.4	-	5242	14	5178	72.0	70.3	71.8	58.1
05/02	53.0	52.3	54.3	54.6	55.5	56.1	#	60.1	60.6	61.9	53.4	47.9	-	5090	14	5192	68.0	65.3	67.8	58.6
05/03	53.6	!	54.5	54.4	54.9	55.4	#	59.4	60.1	61.6	52.7	47.8	-	5425	14	5192	69.5	64.9	67.8	56.1
05/04	54.2	!	54.6	53.9	54.3	54.8	#	58.3	58.8	60.1	52.9	47.6	-	5403	14	5672	69.5	63.5	66.0	56.3
05/05	52.8	?	51.6	54.6	54.0	54.6	#	58.6	58.8	59.7	53.6	46.6	-	5577	14	5696	67.0	60.3	59.6	54.3
05/06	53.3	?	51.9	54.5	54.2	54.6	#	57.8	58.3	59.5	52.9	46.5	-	5974	14	5692	60.5	58.7	59.1	54.7
05/07	52.8	?	51.6	54.5	53.4	53.6	#	56.8	57.2	58.1	52.5	46.3	-	5855	14	5756	59.5	58.6	59.1	57.8
05/08	53.2	52.2	53.9	53.0	53.7	54.3	#	57.3	57.4	58.1	53.0	46.7	-	5462	14	5842	65.5	63.2	63.2	61.3
05/09	52.2	51.9	53.4	53.3	54.1	54.7	#	58.7	59.2	60.8	54.2	46.8	-	5628	14	5953	72.0	68.1	67.8	63.9
05/10	52.0	51.0	53.3	54.1	54.8	55.4	!	59.5	59.9	61.4	54.1	46.1	-	6251	14	6237	73.5	68.1	70.5	62.0
05/11	52.1	50.8	53.5	52.9	53.9	54.8	57.9	59.5	60.1	61.6	53.7	46.2	-	5895	14	6242	71.5	67.9	71.7	62.0
05/12	51.7	50.5	53.3	52.9	53.7	54.4	57.6	58.9	59.8	61.5	53.9	46.6	-	5890	14	6241	72.0	68.9	71.0	62.5
05/13	51.8	51.0	53.2	52.7	53.8	54.6	57.5	59.4	60.3	61.9	54.5	46.7	-	5820	14	6199	75.0	71.7	72.1	66.0
05/14	51.6	50.6	53.3	52.8	53.4	54.2	57.1	58.9	59.8	61.4	53.7	46.2	-	5853	14	6193	65.5	64.3	63.9	59.7
05/15	51.9	50.8	53.3	52.7	53.6	54.5	57.0	58.7	59.5	61.0	53.8	46.2	-	5725	14	6194	68.5	67.8	70.0	58.4
05/16	50.9	50.1	53.3	52.6	53.5	54.4	57.1	58.8	59.8	61.4	54.2	46.7	-	5955	14	6193	74.5	71.0	72.6	60.8
05/17	50.7	50.0	53.3	52.6	53.7	54.7	57.4	59.1	60.0	61.5	54.3	47.2	-	6264	14	6195	80.5	75.6	76.9	63.3
05/18	50.7	49.9	53.6	51.7	52.7	53.9	57.1	59.2	60.3	62.2	54.6	46.8	-	6124	14	6192	79.5	76.1	79.3	66.4
05/19	50.9	50.2	52.9	51.8	52.6	53.6	56.4	58.3	59.4	61.1	54.0	47.2	-	6492	20	6191	72.0	67.8	72.8	59.3
05/20	50.6	49.9	51.9	51.3	51.5	52.1	54.0	55.4	56.4	58.2	52.3	47.3	-	6069	14	6193	56.0	55.5	56.4	50.0
05/21	50.3	49.4	51.8	50.8	51.2	51.8	53.5	54.4	54.9	55.6	52.1	46.5	-	5913	14	6193	58.5	56.1	56.8	47.7
05/22	51.3	49.6	51.8	50.6	51.1	51.8	53.6	54.7	55.4	56.4	52.8	46.4	-	5653	14	6193	62.0	59.3	59.9	52.6
05/23	51.0	50.2	51.9	51.0	51.6	52.3	54.5	55.5	56.0	57.1	53.5	46.7	-	6077	14	6192	65.5	62.1	62.0	54.9
05/24	51.3	50.1	51.5	51.6	52.4	53.1	55.7	57.2	58.0	58.9	53.5	46.8	-	6475	70	6194	68.5	63.8	63.7	56.9
05/25	50.8	50.0	52.2	51.8	52.7	53.5	56.0	57.5	58.3	59.9	53.4	47.0	-	5828	14	6192	69.5	66.0	67.9	59.9
05/26	51.0	49.9	51.6	52.1	53.0	53.8	56.5	58.1	59.0	60.7	53.4	47.3	-	4796	1089	6229	70.0	69.0	70.8	61.0
05/27	51.0	50.2	52.4	52.1	53.0	53.8	56.6	58.3	59.3	60.9	53.7	47.5	-	6297	14	6243	72.0	71.0	73.1	60.0
05/28	51.3	50.1	52.2	52.0	52.9	53.8	56.5	58.1	59.1	60.7	54.0	47.9	-	5571	14	6242	77.0	74.6	76.4	61.8
05/29	51.4	49.9	52.3	52.0	52.9	53.8	56.6	58.4	59.4	61.1	54.9	47.7	-	6369	14	6241	75.0	74.4	74.8	64.9
05/30	51.6	50.0	52.3	52.4	53.3	54.2	57.1	58.9	59.9	61.7	55.4	47.8	-	5548	14	6243	83.5	77.1	78.1	67.7
05/31	51.5	50.4	52.3	52.5	53.5	54.5	57.5	59.5	60.6	62.4	55.7	47.9	-	6478	20	6244	↑ 80.5	79.1	80.8	70.2
May	51.8	50.6	53.1	52.7	53.4	54.1	56.3	58.2	58.9	60.3	53.7	47.0	-	5839	51	6027	70.1	67.1	68.5	59.6

Total CFS	180999	1577	186849
Total AF	359004	3128	370607

Legend

- ? = 1-9 hours of data missing (Average includes estimations)
- ! = 10 or more hours of data missing (Average not calculated)
- # = Station out of service
- ↑ = Record high air temperature
- ↓ = Record low air temperature
- ☐ = Monthly Averages

Notes

- ¹ Temperatures are weighted averages based on individual penstock flow and temperature
- Highlighted cells in the TCD column indicate a TCD change was made on that day
- ² Current control point (see page 3 for more details)
- ³ Column not used this month

D A T E	Redding (RDD) Daily Air Temperatures (°F)																																			
	Actual			Forecasted																																
	Previous Day			Current Day			1 Day			2 Days			3 Days			4 Days			5 Days			6 Days			7 Days			8 Days			9 Days			10 Days		
	↓	↑	Avg	↓	↑	Avg	↓	↑	Avg	↓	↑	Avg	↓	↑	Avg	↓	↑	Avg	↓	↑	Avg	↓	↑	Avg	↓	↑	Avg	↓	↑	Avg	↓	↑	Avg	↓	↑	Avg
05/01	57	82	69.5	59	86	72.5	53	84	68.5	54	81	67.5	55	75	65.0	51	74	62.5	51	80	65.5	52	80	66.0	58	78	68.0	57	81	69.0	54	82	68.0	52	80	66.0
05/02	59	85	72.0	54	84	69.0	53	82	67.5	56	77	66.5	51	72	61.5	52	76	64.0	54	79	66.5	54	79	66.5	55	83	69.0	55	90	72.5	55	86	70.5	57	84	70.5
05/03	52	84	68.0	56	82	69.0	56	79	67.5	52	76	64.0	53	77	65.0	54	77	65.5	53	81	67.0	56	84	70.0	55	84	69.5	55	90	72.5	54	87	70.5	58	83	70.5
05/04	55	84	69.5	60	79	69.5	52	75	63.5	54	77	65.5	54	76	65.0	54	80	67.0	55	84	69.5	57	87	72.0	55	86	70.5	54	90	72.0	53	84	68.5	56	85	70.5
05/05	59	80	69.5	57	74	65.5	54	75	64.5	55	77	66.0	55	80	67.5	56	82	69.0	53	86	69.5	55	88	71.5	52	91	71.5	55	94	74.5	56	89	72.5	58	84	71.0
05/06	57	77	67.0	54	74	64.0	54	74	64.0	55	80	67.5	56	82	69.0	55	87	71.0	55	89	72.0	57	92	74.5	56	91	73.5	57	88	72.5	56	86	71.0	57	84	70.5
05/07	54	67	60.5	59	71	65.0	53	80	66.5	57	81	69.0	56	87	71.5	56	87	71.5	56	86	71.0	56	85	70.5	53	82	67.5	53	87	70.0	55	85	70.0	57	87	72.0
05/08	58	61	59.5	58	78	68.0	56	80	68.0	55	86	70.5	55	87	71.0	55	85	70.0	53	82	67.5	52	82	67.0	53	85	69.0	55	87	71.0	56	86	71.0	55	87	71.0
05/09	57	74	65.5	64	81	72.5	52	87	69.5	53	88	70.5	54	87	70.5	56	86	71.0	53	79	66.0	53	82	67.5	56	88	72.0	57	86	71.5	54	81	67.5	52	83	67.5
05/10	63	81	72.0	60	86	73.0	53	88	70.5	54	89	71.5	58	87	72.5	53	77	65.0	53	79	66.0	54	84	69.0	56	87	71.5	58	80	69.0	53	81	67.0	52	85	68.5
05/11	59	88	73.5	54	90	72.0	55	90	72.5	58	88	73.0	53	76	64.5	53	79	66.0	53	82	67.5	56	87	71.5	61	87	74.0	55	80	67.5	52	77	64.5	52	83	67.5
05/12	53	90	71.5	53	89	71.0	58	88	73.0	53	75	64.0	53	79	66.0	55	83	69.0	56	87	71.5	58	84	71.0	62	86	74.0	56	85	70.5	53	84	68.5	55	86	70.5
05/13	53	91	72.0	60	88	74.0	53	75	64.0	52	79	65.5	53	84	68.5	56	89	72.5	59	88	73.5	57	84	70.5	57	79	68.0	51	77	64.0	54	81	67.5	53	84	68.5
05/14	59	91	75.0	55	74	64.5	52	80	66.0	54	84	69.0	56	91	73.5	60	89	74.5	58	80	69.0	51	72	61.5	49	76	62.5	51	81	66.0	53	84	68.5	54	82	68.0
05/15	54	77	65.5	54	79	66.5	55	84	69.5	58	90	74.0	61	91	76.0	55	79	67.0	51	71	61.0	50	73	61.5	47	74	60.5	51	79	65.0	51	78	64.5	53	85	69.0
05/16	53	84	68.5	62	86	74.0	57	92	74.5	61	92	76.5	54	78	66.0	51	69	60.0	49	72	60.5	51	75	63.0	51	77	64.0	53	76	64.5	54	78	66.0	54	86	70.0
05/17	62	87	74.5	68	92	80.0	61	95	78.0	56	80	68.0	52	69	60.5	50	70	60.0	50	73	61.5	52	76	64.0	52	75	63.5	54	77	65.5	53	79	66.0	53	81	67.0
05/18	68	93	80.5	63	94	78.5	56	80	68.0	51	67	59.0	49	67	58.0	50	72	61.0	52	75	63.5	52	74	63.0	52	82	67.0	56	88	72.0	56	91	73.5	58	88	73.0
05/19	61	98	79.5	66	79	72.5	52	68	60.0	50	66	58.0	50	72	61.0	52	72	62.0	53	76	64.5	53	77	65.0	51	81	66.0	52	82	67.0	55	84	69.5	57	89	73.0
05/20	60	84	72.0	56	68	62.0	50	66	58.0	51	71	61.0	53	73	63.0	53	75	64.0	53	80	66.5	54	82	68.0	53	86	69.5	56	90	73.0	58	89	73.5	59	86	72.5
05/21	51	61	56.0	52	62	57.0	50	67	58.5	51	69	60.0	50	73	61.5	52	76	64.0	53	78	65.5	53	77	65.0	52	73	62.5	53	83	68.0	54	85	69.5	58	88	73.0
05/22	52	65	58.5	55	69	62.0	50	71	60.5	52	74	63.0	54	77	65.5	53	78	65.5	53	77	65.0	52	78	65.0	49	77	63.0	53	84	68.5	58	86	72.0	59	89	74.0
05/23	55	69	62.0	50	72	61.0	53	74	63.5	55	78	66.5	53	82	67.5	55	80	67.5	54	80	67.0	55	84	69.5	60	89	74.5	61	88	74.5	58	84	71.0	56	84	70.0
05/24	55	76	65.5	61	75	68.0	55	79	67.0	55	84	69.5	54	82	68.0	56	84	70.0	57	85	71.0	57	86	71.5	57	88	72.5	59	88	73.5	57	90	73.5	59	90	74.5
05/25	57	80	68.5	54	80	67.0	55	85	70.0	56	84	70.0	56	87	71.5	57	86	71.5	59	88	73.5	60	91	75.5	58	91	74.5	58	92	75.0	58	92	75.0	61	92	76.5
05/26	54	85	69.5	55	86	70.5	55	84	69.5	56	88	72.0	56	88	72.0	60	93	76.5	62	94	78.0	61	91	76.0	56	82	69.0	56	86	71.0	60	90	75.0	62	93	77.5
05/27	54	86	70.0	59	86	72.5	57	88	72.5	60	90	75.0	61	93	77.0	63	95	79.0	63	92	77.5	62	89	75.5	56	88	72.0	56	88	72.0	59	91	75.0	61	88	74.5
05/28	57	87	72.0	NR	89	-	59	92	75.5	60	95	77.5	64	97	80.5	62	96	79.0	63	94	78.5	62	93	77.5	59	90	74.5	59	84	71.5	58	88	73.0	61	91	76.0
05/29	63	91	77.0	59	92	75.5	60	96	78.0	64	98	81.0	63	97	80.0	63	97	80.0	65	98	81.5	63	102	82.5	63	97	80.0	64	92	78.0	62	91	76.5	63	91	77.0
05/30	57	93	75.0	68	97	82.5	64	100	82.0	67	99	83.0	63	98	80.5	65	99	82.0	65	101	83.0	67	95	81.0	66	93	79.5	64	97	80.5	65	97	81.0	66	95	80.5
05/31	68	99	83.5	59	101	80.0	66	100	83.0	65	99	82.0	66	101	83.5	67	103	85.0	70	102	86.0	67	94	80.5	64	92	78.0	63	87	75.0	60	85	72.5	60	92	76.0

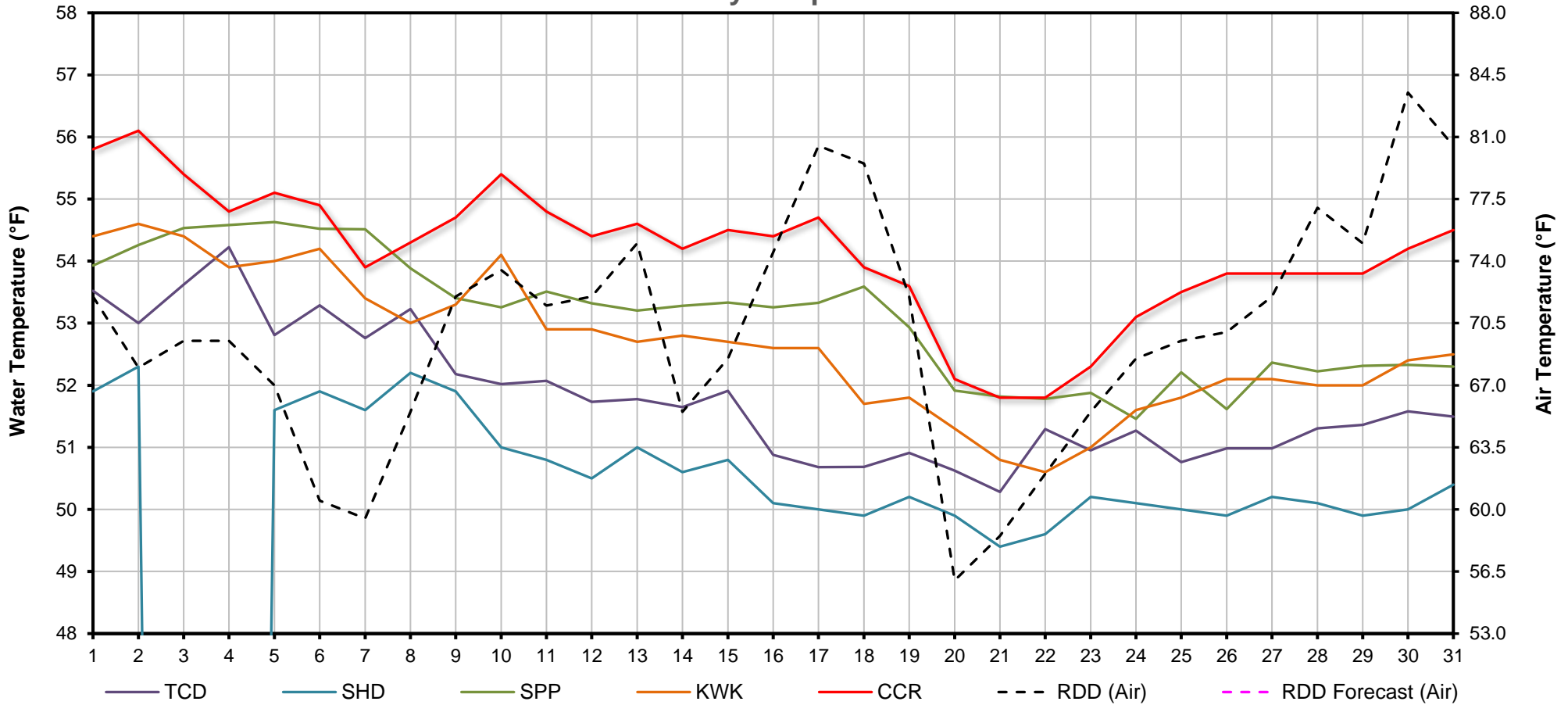
[Web Links](#)

[Legend](#)

[10-Day Min/Max Forecast](#)
[Previous Days Min/Max Actuals](#)

NR = Forecasted temperatures not recorded
100 = Previous day actual temperatures in red and bolded indicate a record temperature for that date

Mean Daily Temperatures



Station Details			
Code	Body of Water	Location ¹	CDEC Link
TCD	N/A	Shasta Power Plant	N/A
SHD	Sacramento River	0.3 miles downstream of Shasta Power Plant	Click Here
SPP	N/A	Spring Creek Power Plant	N/A
KWK	Sacramento River	0.8 miles downstream of Keswick Dam	Click Here
SAC	Sacramento River	4.8 miles downstream of Keswick Dam	Click Here
CCR	Sacramento River	9.7 miles downstream of Keswick Dam	Click Here
BSF	Sacramento River	25 miles downstream of Keswick Dam	Click Here
JLF	Sacramento River	34 miles downstream of Keswick Dam	Click Here
BND	Sacramento River	41 miles downstream of Keswick Dam	Click Here
RDB	Sacramento River	58 miles downstream of Keswick Dam	Click Here
IGO	Clear Creek	7.3 miles downstream of Whiskeytown Dam	Click Here
LWS	Trinity River	1.1 miles downstream of Lewiston Dam	Click Here
DGC ²	Trinity River	19 miles downstream of Lewiston Dam	Click Here
NFH ³	Trinity River	38 miles downstream of Lewiston Dam	Click Here

Temperature Control Point		
Point	Temp. (°F)	Date Range

Notes

¹ Distances are approximate

² DGC is only reported in September

³ NFH is only reported in October, November and December

Lake Shasta Isothermalbaths - 2016 (Water Temperature, in °F)

