

Northern CVP Water Temperature Report

April - 2022

Page	Description
2	- Mean Daily Water Temperature, Release Flow Rates and Air Temperatures with Monthly Averages
3	- Redding 10-Day Forecasted Air Temperatures
4	- Sacramento River Mean Daily Water Temperature, Air Temperature and 10-Day Forecasted Air Temperature Plot - Water Temperature Measuring Station Details - Temperature Control Point Details
5	- Shasta Lake Isothermobaths & Cold Water Pool Statistics
14	- Trinity Lake Isothermobaths & Cold Water Pool Statistics
23	- Whiskeytown Lake Isothermobaths & Cold Water Pool Statistics
x	- TCD Configuration (External Link)



— BUREAU OF —
RECLAMATION

All Data in this Report is Preliminary and Subject to Change

DATE	Mean Daily Water Temperatures (°F)													Mean Daily Release (CFS)			Mean Daily Air Temperatures (°F)			
	TCD ¹	SHD	SPP ¹	KWK	SAC ²	CCR	BSF	BND	RDB	IGO	LWS	DGC	NFH	Shasta Generation	Spring Creek P.P.	Keswick Total	RDD	BSF	RDB	
Mar	50.0	49.2	49.3	50.2	50.6	51.2	52.6	53.8	54.5	49.2	48.7	49.2	50.2	2961	74	3246	58.7	56.2	57.8	
04/01	51.9	50.5	49.7	51.6	52.2	53.1	54.9	56.2	57.1	50.6	49.6	52.3	53.6	3124	75	3259	68.0	61.5	63.5	
04/02	52.2	50.2	49.7	52.1	52.5	53.4	55.3	56.9	57.6	50.7	49.5	52.5	53.9	3134	75	3263	63.5	61.2	63.3	
04/03	51.1	49.9	49.2	52.3	52.3	53.0	54.5	55.9	56.9	49.9	49.6	51.5	53.0	2609	202	3256	59.0	56.7	62.0	
04/04	50.1	49.3	49.3	51.8	52.1	52.8	54.1	54.9	55.8	50.1	50.1	51.0	52.8	2620	331	3267	62.5	59.6	61.7	
04/05	51.3	49.7	49.4	51.9	52.2	52.8	53.9	54.9	55.5	50.3	50.4	51.2	52.1	2774	270	3253	56.5	56.1	60.0	
04/06	52.9	51.8	49.9	51.8	52.5	53.5	55.0	56.2	56.5	50.8	50.5	52.2	53.4	2875	76	3255	72.5	65.5	68.1	
04/07	52.7	50.9	50.0	51.6	52.4	53.6	55.9	57.7	58.4	51.4	50.0	54.0	55.3	3068	75	3255	68.0	64.9	68.9	
04/08	51.7	51.0	50.0	52.6	53.0	54.1	56.3	58.5	59.4	51.6	50.0	54.8	56.3	3222	182	3255	69.0	66.4	69.4	
04/09	53.1	50.1	50.2	53.3	53.5	54.1	55.6	57.0	58.0	50.9	49.8	53.2	54.5	2493	277	3255	64.0	61.8	62.8	
04/10	53.0	51.1	50.1	52.9	53.4	54.1	55.1	55.7	56.3	50.5	50.1	51.3	52.7	2704	188	3258	61.0	57.9	60.0	
04/11	52.2	50.6	50.7	52.8	53.0	53.7	55.5	56.3	56.6	50.4	49.7	50.9	51.2	2975	154	3267	52.0	52.1	53.3	
04/12	51.5	50.4	51.1	52.8	52.9	53.1	53.7	54.6	55.6	49.6	49.8	48.7	49.7	2491	477	3264	↓	46.0	45.5	48.3
04/13	50.6	49.9	50.8	52.2	52.2	52.3	52.8	53.7	54.1	49.5	49.6	48.7	49.3	2502	74	3254	49.5	50.3	50.1	
04/14	51.0	50.1	50.4	51.7	51.8	51.9	52.2	52.6	52.7	49.7	49.2	48.7	49.3	2779	77	3249	52.0	52.0	52.1	
04/15	51.4	50.9	50.4	51.4	51.7	52.3	52.3	53.0	53.4	50.4	48.5	48.6	48.8	2536	77	3238	53.0	51.6	53.3	
04/16	51.8	? 51.7	50.7	51.5	51.9	52.9	53.7	54.4	54.4	51.6	48.5	49.6	50.3	3191	77	3235	57.5	53.5	54.8	
04/17	51.7	!	-	50.9	51.7	52.4	53.4	54.7	55.6	56.0	51.6	48.7	50.3	3476	77	3238	58.0	54.6	56.2	
04/18	51.9	51.1	50.8	52.3	52.2	52.6	54.0	55.6	56.2	50.2	48.5	48.9	50.2	3031	77	3233	53.0	52.3	53.8	
04/19	51.8	50.9	50.9	52.1	52.2	52.8	53.7	54.9	55.6	50.7	48.8	48.3	48.7	3312	77	3274	56.5	55.5	57.1	
04/20	52.0	51.2	51.1	52.0	51.9	52.1	52.6	53.5	54.4	49.9	48.3	48.1	48.8	3042	77	3278	53.0	52.7	53.1	
04/21	52.1	50.7	? 50.9	51.7	52.1	52.8	53.2	54.0	54.3	51.2	46.6	47.2	48.4	3000	77	3271	55.5	53.8	54.6	
04/22	52.4	51.6	51.2	51.8	52.7	53.6	54.5	55.3	55.8	51.8	46.9	47.2	48.5	2780	77	3289	57.5	55.0	54.8	
04/23	52.9	52.0	51.4	52.2	53.0	54.1	55.8	57.0	57.4	52.0	47.5	47.9	49.3	3532	77	3263	58.5	57.6	58.8	
04/24	53.3	50.8	51.3	52.6	53.5	54.6	56.6	58.1	58.8	52.4	48.2	49.2	50.5	2296	77	3261	63.5	60.5	62.7	
04/25	52.8	51.7	51.2	53.0	53.7	54.7	57.2	59.1	59.9	52.6	48.4	49.7	51.4	3336	77	3265	65.0	62.1	63.9	
04/26	52.7	52.0	51.2	53.2	54.1	55.4	58.0	60.0	60.9	53.1	48.9	50.0	51.5	3389	77	3258	65.5	63.9	65.9	
04/27	52.7	52.0	51.5	53.2	54.1	55.2	57.7	59.9	61.1	52.7	49.4	50.3	51.5	2882	76	3265	61.5	58.8	62.7	
04/28	52.2	51.6	51.4	53.4	54.2	55.3	58.0	59.6	60.6	52.5	49.6	50.5	52.2	2584	76	3258	61.5	59.6	59.6	
04/29	53.0	51.6	51.5	53.7	54.6	55.6	57.3	59.1	? 60.4	52.6	49.7	50.2	51.6	3105	76	3259	62.5	59.0	61.3	
04/30	52.9	51.4	51.5	53.7	54.6	56.1	58.8	60.4	? 61.1	53.2	49.5	51.0	53.0	3038	84	3260	68.5	65.6	67.2	
-																				
Apr	52.1	50.9	50.6	52.4	52.8	53.6	55.1	56.3	57.0	51.1	49.1	50.3	51.5	2930	126	3259	59.8	57.6	59.4	
														Total CFS	87900	3769	97755			
														Total AF	174346	7476	193893			

Legend

- ? = 1-9 hours of data missing (Average includes estimations)
- ! = 10 or more hours of data missing (Average not calculated)
- # = Station out of service
- ↑ = Record high air temperature
- ↓ = Record low air temperature
- = Monthly Averages

Notes

- ¹ Temperatures are weighted averages based on individual penstock flow and temperature
- Highlighted cells in the TCD column indicate a TCD change was made on that day
- ² Current Sacramento River control point (see page 4 for more details)

D A T E	Redding (RDD) Daily Air Temperatures (°F)																																				
	Actual			Forecasted																																	
	Previous Day			Current Day			1 Day			2 Days			3 Days			4 Days			5 Days			6 Days			7 Days			8 Days			9 Days			10 Days			
	↓	↑	Avg	↓	↑	Avg	↓	↑	Avg	↓	↑	Avg	↓	↑	Avg	↓	↑	Avg	↓	↑	Avg	↓	↑	Avg	↓	↑	Avg	↓	↑	Avg	↓	↑	Avg	↓	↑	Avg	
04/01	51	76	63.5	57	81	69.0	45	80	62.5	44	78	61.0	46	70	58.0	43	76	59.5	47	86	66.5	49	92	70.5	53	86	69.5	53	86	69.5	52	75	63.5	43	67	55.0	
04/02	55	81	68.0	49	80	64.5	43	77	60.0	46	69	57.5	42	74	58.0	46	87	66.5	49	91	70.0	52	91	71.5	54	80	67.0	44	68	56.0	46	71	58.5	44	73	58.5	
04/03	47	80	63.5	41	79	60.0	47	69	58.0	42	77	59.5	46	90	68.0	51	93	72.0	54	89	71.5	50	79	64.5	56	82	69.0	49	70	59.5	49	71	60.0	46	73	59.5	
04/04	40	78	59.0	55	68	61.5	40	74	57.0	46	89	67.5	51	93	72.0	54	90	72.0	52	83	67.5	44	70	57.0	46	66	56.0	43	72	57.5	45	75	60.0	49	76	62.5	
04/05	52	73	62.5	42	73	57.5	47	89	68.0	51	94	72.5	54	90	72.0	50	78	64.0	42	71	56.5	39	65	52.0	40	66	53.0	42	65	53.5	43	72	57.5	51	77	64.0	
04/06	40	73	56.5	58	91	74.5	54	92	73.0	56	87	71.5	48	75	61.5	41	70	55.5	38	68	53.0	37	70	53.5	50	71	60.5	48	78	63.0	48	80	64.0	53	79	66.0	
04/07	56	89	72.5	48	91	69.5	53	87	70.0	47	73	60.0	44	69	56.5	42	62	52.0	37	66	51.5	36	68	52.0	43	69	56.0	46	69	57.5	46	71	58.5	50	74	62.0	
04/08	45	91	68.0	52	86	69.0	48	73	60.5	42	69	55.5	40	59	49.5	36	66	51.0	37	65	51.0	43	64	53.5	45	68	56.5	45	75	60.0	46	78	62.0	51	77	64.0	
04/09	50	88	69.0	54	72	63.0	43	71	57.0	41	58	49.5	33	62	47.5	34	63	48.5	42	65	53.5	41	70	55.5	47	77	62.0	48	82	65.0	50	80	65.0	51	75	63.0	
04/10	54	74	64.0	50	71	60.5	44	58	51.0	32	60	46.0	35	59	47.0	42	58	50.0	37	62	49.5	37	65	51.0	45	71	58.0	46	79	62.5	48	76	62.0	51	78	64.5	
04/11	50	72	61.0	52	57	54.5	30	59	44.5	35	57	46.0	41	58	49.5	38	62	50.0	39	63	51.0	39	71	55.0	45	65	55.0	46	65	55.5	46	74	60.0	51	75	63.0	
04/12	46	58	52.0	32	60	46.0	33	58	45.5	41	57	49.0	42	64	53.0	45	62	53.5	37	70	53.5	41	70	55.5	43	71	57.0	44	72	58.0	46	75	60.5	50	74	62.0	
04/13	31	61	46.0	43	58	50.5	41	58	49.5	42	63	52.5	45	64	54.5	40	70	55.0	41	67	54.0	42	67	54.5	48	72	60.0	51	72	61.5	49	74	61.5	50	73	61.5	
04/14	40	59	49.5	47	54	50.5	35	60	47.5	43	65	54.0	39	71	55.0	40	65	52.5	44	65	54.5	44	66	55.0	49	69	59.0	46	72	59.0	48	77	62.5	53	80	66.5	
04/15	46	58	52.0	43	62	52.5	42	63	52.5	42	69	55.5	40	67	53.5	44	65	54.5	40	68	54.0	46	63	54.5	47	69	58.0	48	77	62.5	51	80	65.5	53	81	67.0	
04/16	43	63	53.0	47	64	55.5	41	68	54.5	40	66	53.0	44	64	54.0	42	62	52.0	44	59	51.5	42	65	53.5	46	72	59.0	49	80	64.5	51	81	66.0	53	80	66.5	
04/17	47	68	57.5	45	68	56.5	38	66	52.0	44	64	54.0	41	60	50.5	44	58	51.0	42	65	53.5	42	73	57.5	50	77	63.5	52	80	66.0	51	82	66.5	50	74	62.0	
04/18	44	72	58.0	40	66	53.0	44	64	54.0	42	59	50.5	44	59	51.5	41	65	53.0	41	71	56.0	44	76	60.0	51	81	66.0	51	81	66.0	52	81	66.5	52	81	66.5	
04/19	40	66	53.0	48	64	56.0	39	58	48.5	43	59	51.0	41	64	52.5	40	73	56.5	43	78	60.5	47	78	62.5	54	82	68.0	52	83	67.5	51	83	67.0	54	82	68.0	
04/20	48	65	56.5	47	57	52.0	43	60	51.5	42	66	54.0	40	74	57.0	44	78	61.0	47	78	62.5	48	73	60.5	48	76	62.0	46	81	63.5	49	81	65.0	52	81	66.5	
04/21	46	60	53.0	47	61	54.0	40	65	52.5	40	74	57.0	43	80	61.5	48	79	63.5	49	74	61.5	43	73	58.0	50	78	64.0	48	81	64.5	51	84	67.5	53	79	66.0	
04/22	46	65	55.5	48	66	57.0	40	75	57.5	43	81	62.0	48	80	64.0	49	72	60.5	43	72	57.5	43	69	56.0	45	73	59.0	48	81	64.5	51	82	66.5	54	80	67.0	
04/23	48	67	57.5	42	75	58.5	43	81	62.0	47	79	63.0	50	76	63.0	44	75	59.5	44	73	58.5	43	75	59.0	53	84	68.5	55	85	70.0	55	84	69.5	53	77	65.0	
04/24	42	75	58.5	47	81	64.0	48	79	63.5	50	73	61.5	44	75	59.5	46	72	59.0	43	75	59.0	46	79	62.5	53	84	68.5	55	87	71.0	55	85	70.0	52	75	63.5	
04/25	47	80	63.5	51	79	65.0	51	75	63.0	44	75	59.5	46	71	58.5	43	75	59.0	47	81	64.0	48	78	63.0	56	85	70.5	55	88	71.5	55	83	69.0	54	79	66.5	
04/26	50	80	65.0	57	75	66.0	43	76	59.5	45	70	57.5	42	76	59.0	49	81	65.0	50	82	66.0	50	77	63.5	52	82	67.0	53	89	71.0	54	85	69.5	53	78	65.5	
04/27	53	78	65.5	54	75	64.5	46	69	57.5	40	76	58.0	49	78	63.5	47	79	63.0	48	75	61.5	46	82	64.0	56	88	72.0	55	84	69.5	56	81	68.5	56	82	69.0	
04/28	48	75	61.5	53	70	61.5	41	78	59.5	50	77	63.5	47	80	63.5	49	72	60.5	46	83	64.5	50	87	68.5	56	86	71.0	55	86	70.5	57	87	72.0	57	86	71.5	
04/29	52	71	61.5	46	78	62.0	51	77	64.0	47	81	64.0	48	75	61.5	47	83	65.0	52	89	70.5	53	75	64.0	48	75	61.5	49	78	63.5	53	79	66.0	51	78	64.5	
04/30	46	79	62.5	51	76	63.5	48	81	64.5	47	72	59.5	45	82	63.5	51	89	70.0	53	78	65.5	49	77	63.0	54	83	68.5	57	89	73.0	57	90	73.5	59	89	74.0	
-																																					

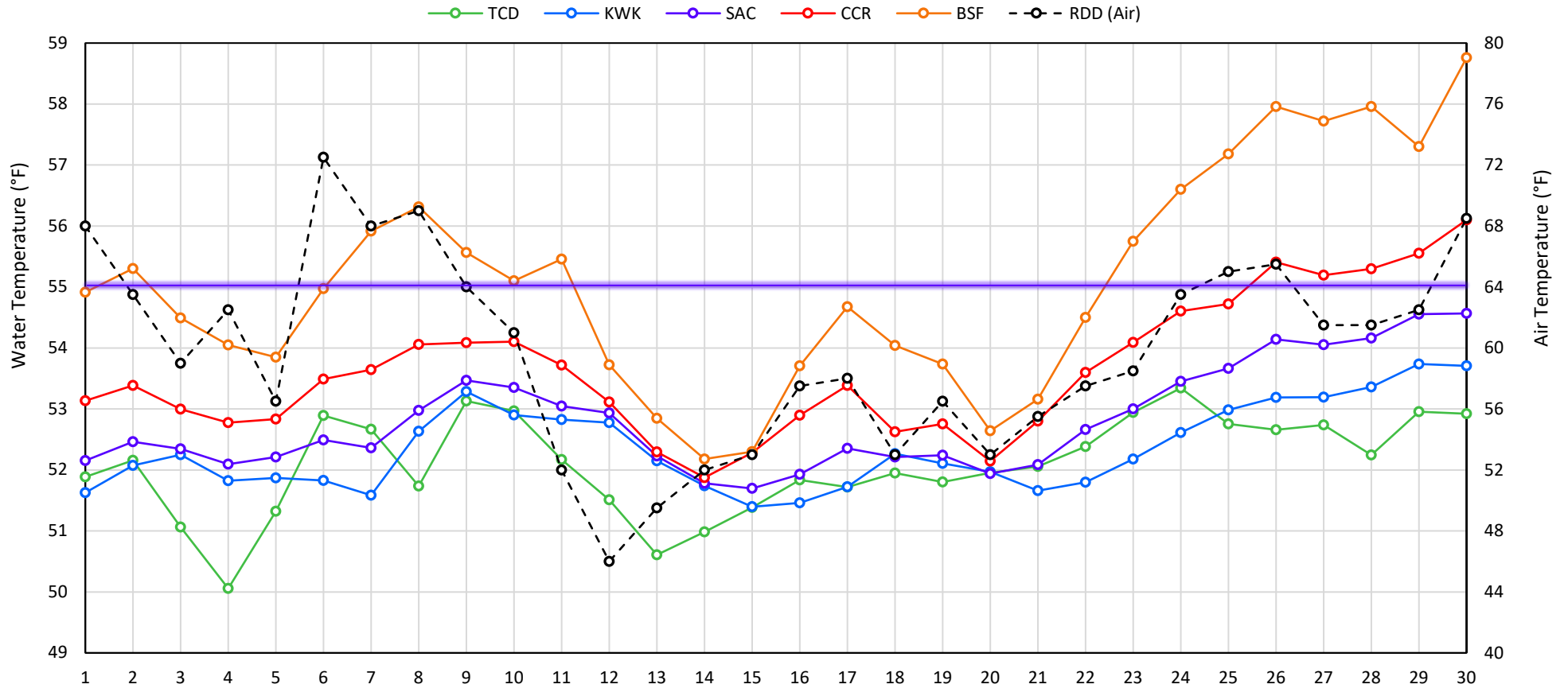
Web Links

- [10-Day Min/Max Forecast](#)
- [Previous Days Min/Max Actuals](#)

Legend

- NR = Forecasted temperatures not recorded
- 100** = Previous day actual temperatures in red and bolded indicate a record temperature for that date

Mean Daily Temperatures



Station Details

Code	Body of Water	Location ¹	CDEC Link
TCD	N/A	Shasta Power Plant	N/A
SHD	Sacramento River	0.3 miles downstream of Shasta Power Plant	Click Here
SPP	N/A	Spring Creek Power Plant	N/A
KWK	Sacramento River	0.8 miles downstream of Keswick Dam	Click Here
SAC	Sacramento River	4.8 miles downstream of Keswick Dam	Click Here
CCR	Sacramento River	9.7 miles downstream of Keswick Dam	Click Here
BSF	Sacramento River	25 miles downstream of Keswick Dam	Click Here
JLF	Sacramento River	34 miles downstream of Keswick Dam	Click Here
BND	Sacramento River	41 miles downstream of Keswick Dam	Click Here
RDB	Sacramento River	58 miles downstream of Keswick Dam	Click Here
IGO	Clear Creek	7.3 miles downstream of Whiskeytown Dam	Click Here
LWS	Trinity River	1.1 miles downstream of Lewiston Dam	Click Here
DGC	Trinity River	19 miles downstream of Lewiston Dam	Click Here
NFH	Trinity River	38 miles downstream of Lewiston Dam	Click Here

Water Right Temperature Control Points

River	Point	Temp. (°F)	Begin Date	End Date
Sacramento	CCR	56	09/21/2020	04/18/2021
Sacramento	CCR	60	04/18/2021	05/17/2021
Sacramento	SAC	57	05/17/2021	06/15/2021
Sacramento	SAC	55	06/15/2021	TBD
Trinity	DGC	56	09/15/2021	10/01/2021
Trinity	NFH	56	10/01/2021	12/31/2021

Notes

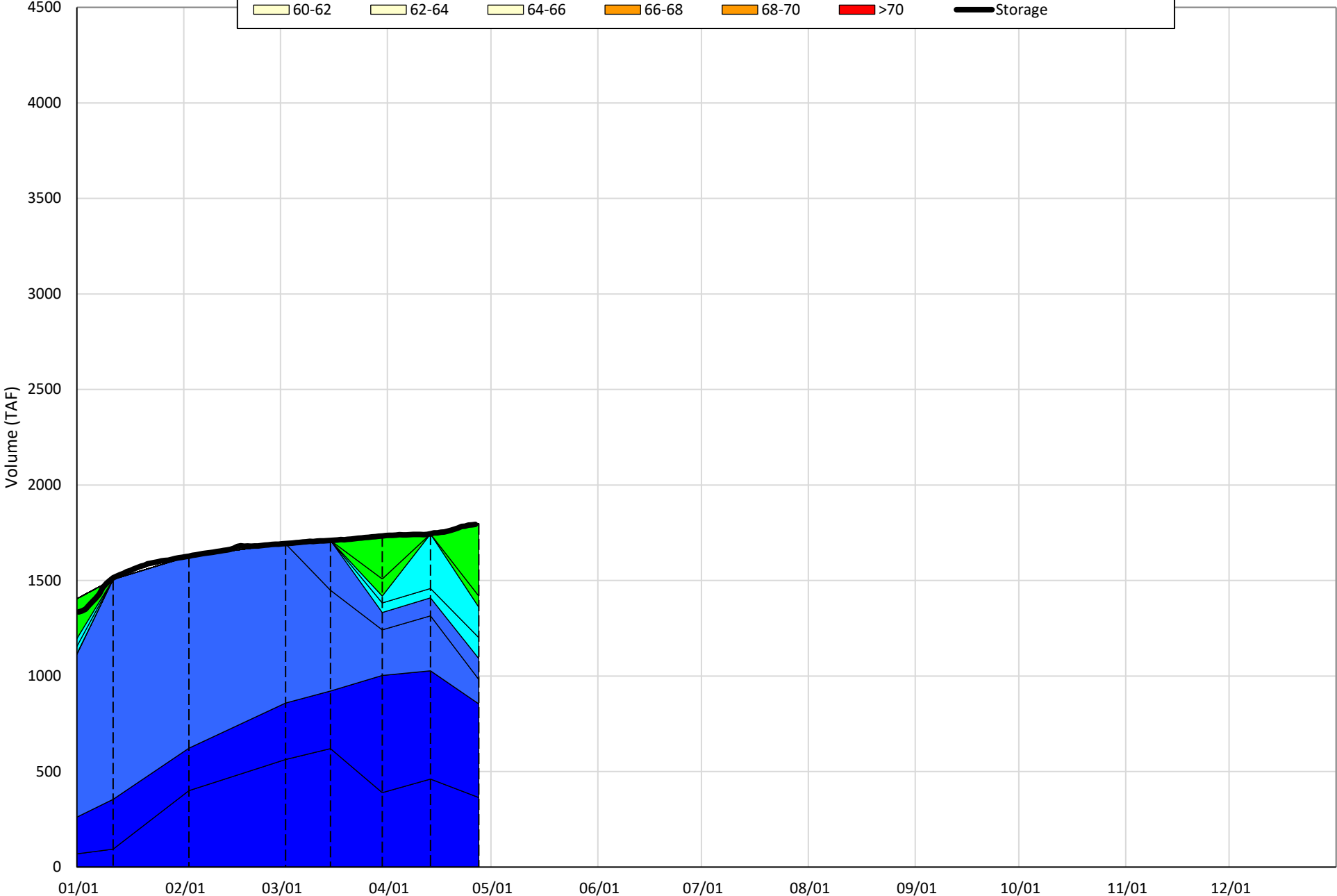
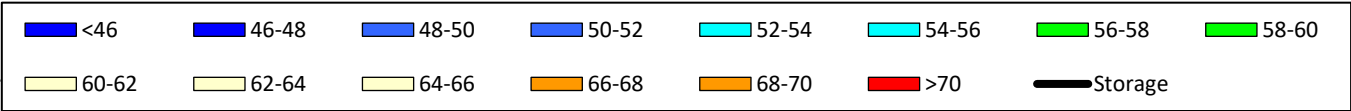
¹ Distances are approximate

Shasta Lake Isothermobaths & Cold Water Pool Statistics

2022

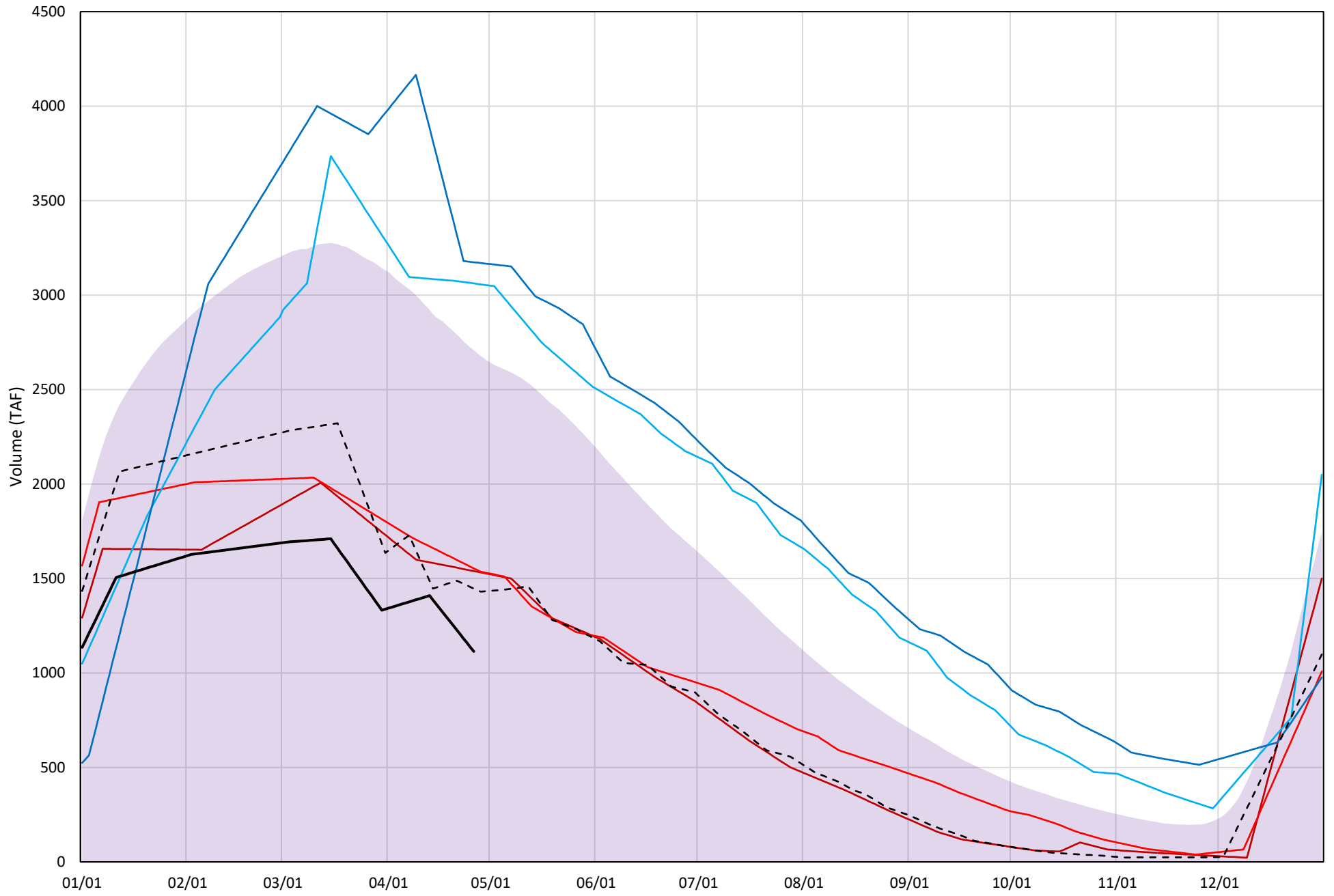
Page	Description
6	- Shasta Lake Isothermobaths Plot
7	- Shasta Lake Cold Water Pool Volume $\leq 52^{\circ}\text{F}$
8	- Shasta Lake Cold Water Pool Volume $\leq 50^{\circ}\text{F}$
9	- Shasta Lake Cold Water Pool Volume $\leq 48^{\circ}\text{F}$
10	- Shasta Lake Cold Water Pool Volume $\leq 52^{\circ}\text{F}$ - Percent Exceedances
11	- Shasta Lake Cold Water Pool Volume $\leq 50^{\circ}\text{F}$ - Percent Exceedances
12	- Shasta Lake Cold Water Pool Volume $\leq 48^{\circ}\text{F}$ - Percent Exceedances
13	- Shasta Lake Cold Water Pool Comparison by Year

Shasta Lake Isothermobaths Plot - 2022



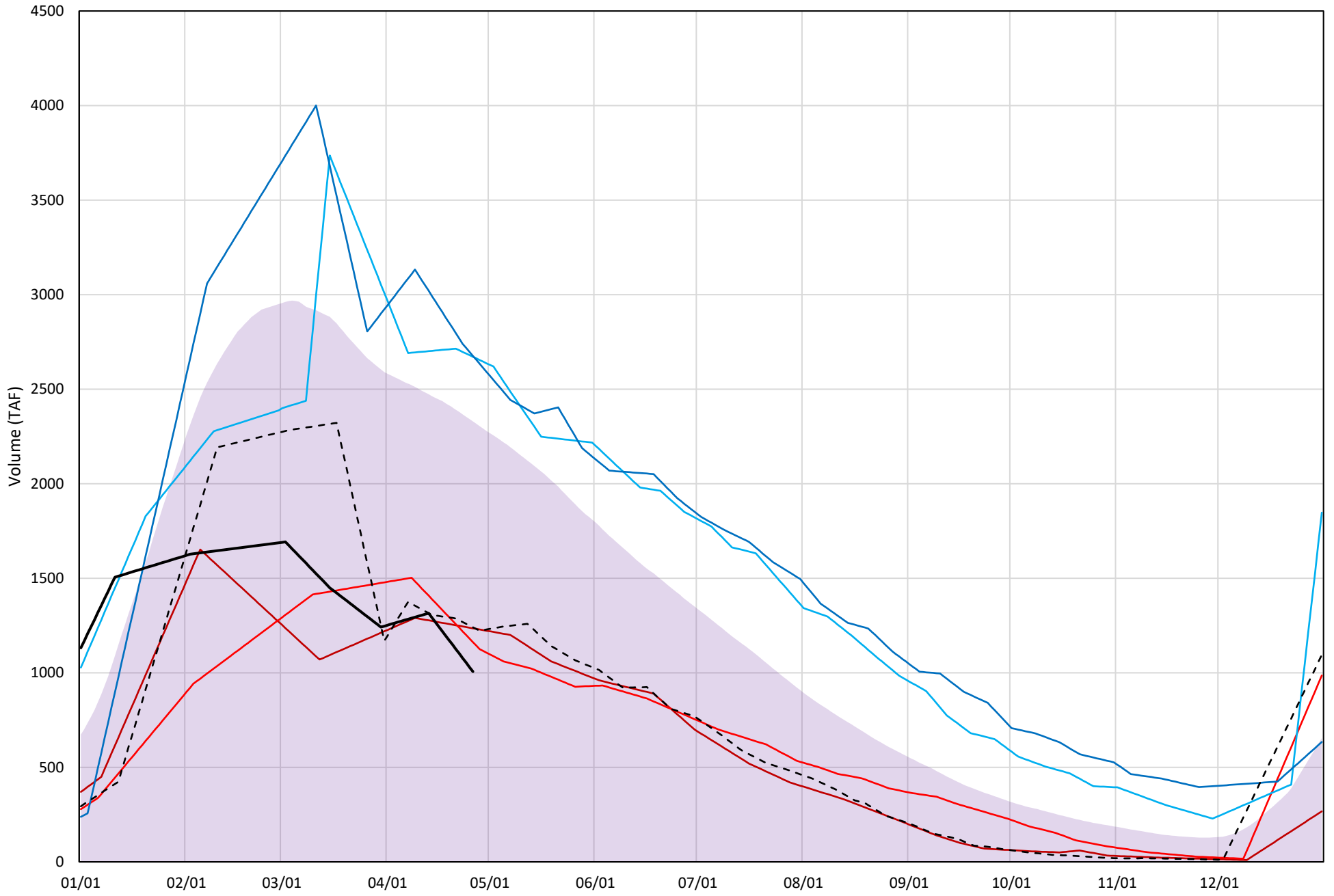
Shasta Lake Cold Water Pool Volume $\leq 52^{\circ}\text{F}$

Avg (1998-2021) 2014 2015 2016 2019 2021 2022



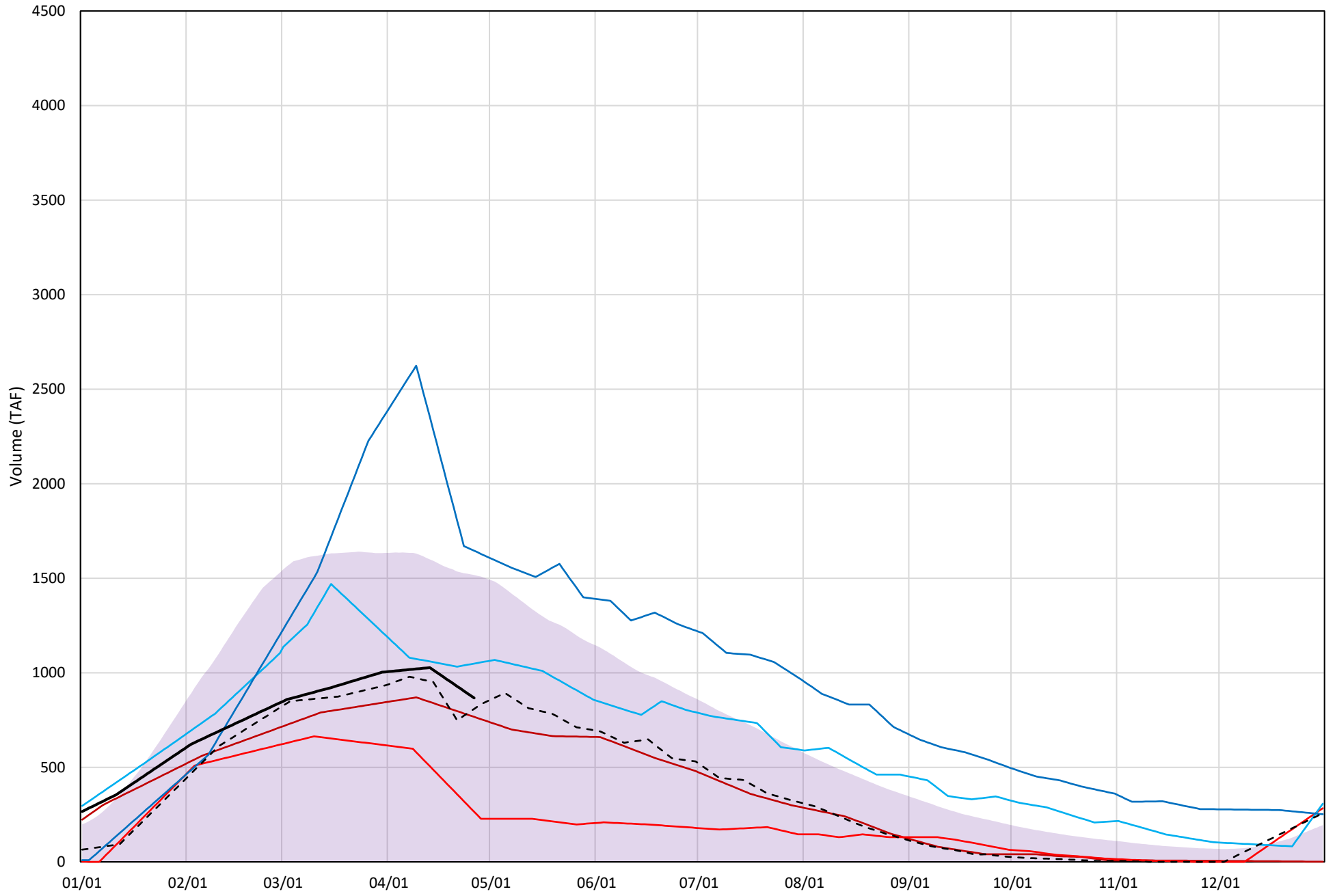
Shasta Lake Cold Water Pool Volume ≤50°F

Avg (1998-2021)
 2014
 2015
 2016
 2019
 2021
 2022



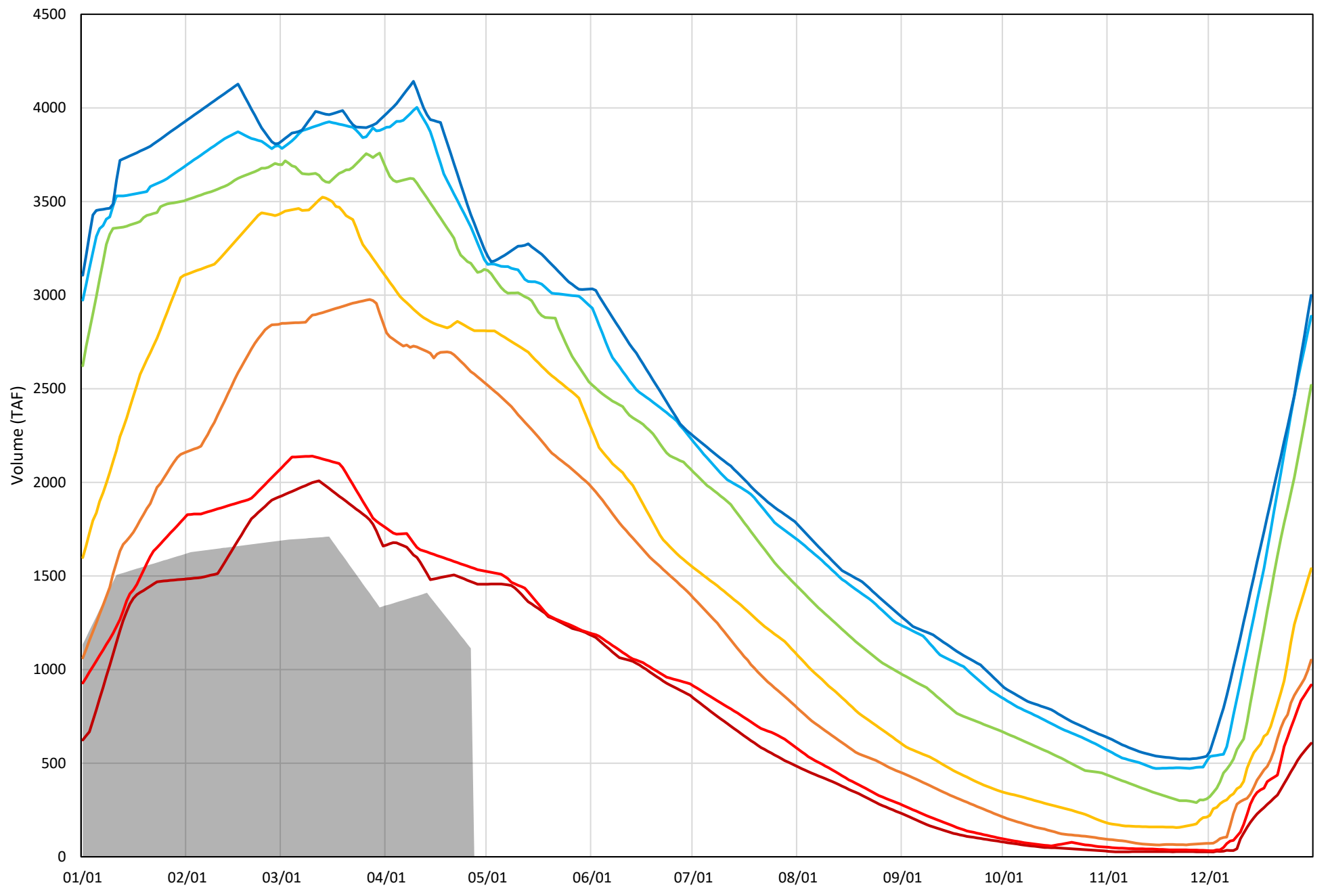
Shasta Lake Cold Water Pool Volume $\leq 48^{\circ}\text{F}$

Avg (1998-2021) 2014 2015 2016 2019 2021 2022



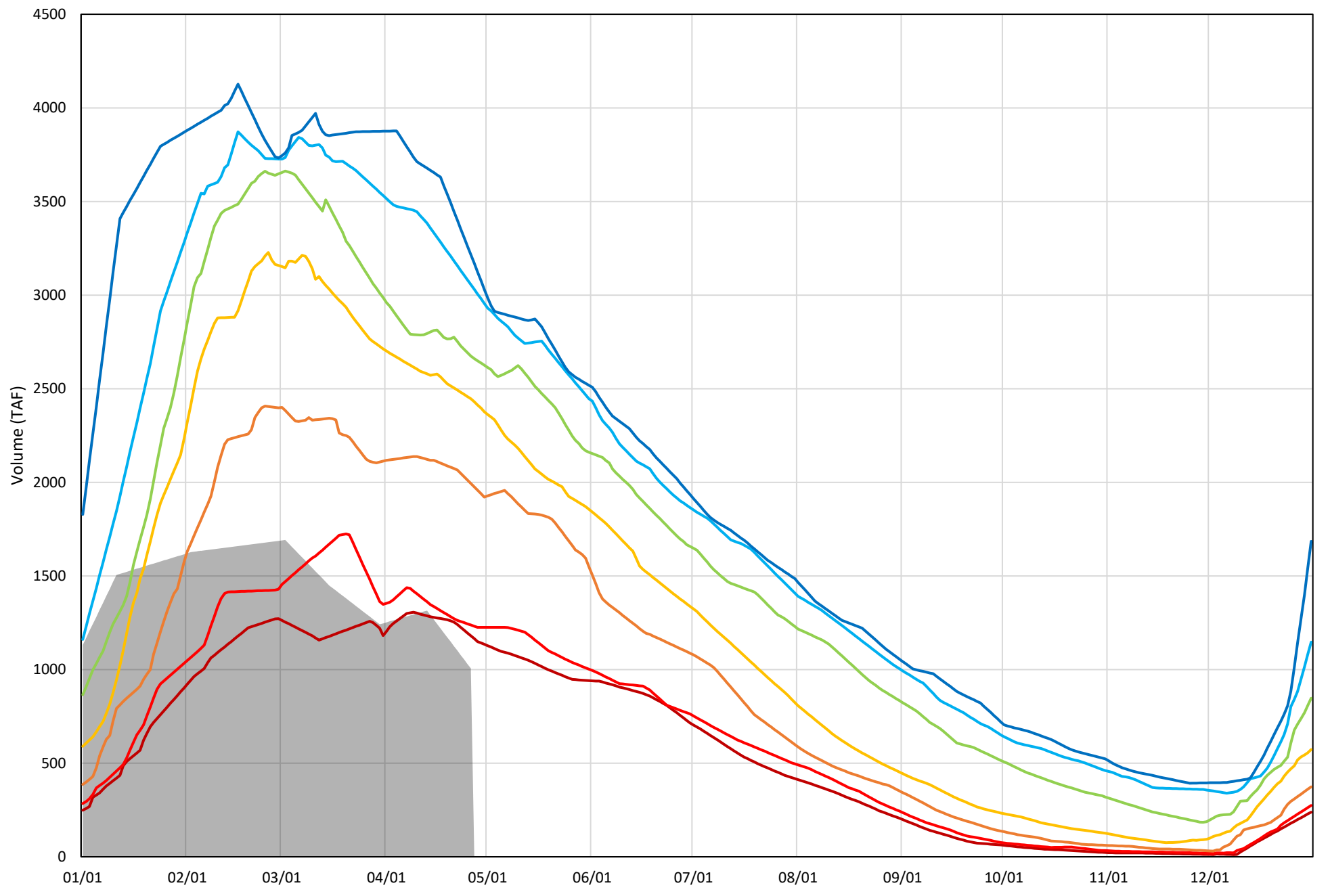
Shasta Lake Cold Water Pool Volume $\leq 52^{\circ}\text{F}$ - Percent Exceedances (1998-2021)

2022 95 90 75 50 25 10 5



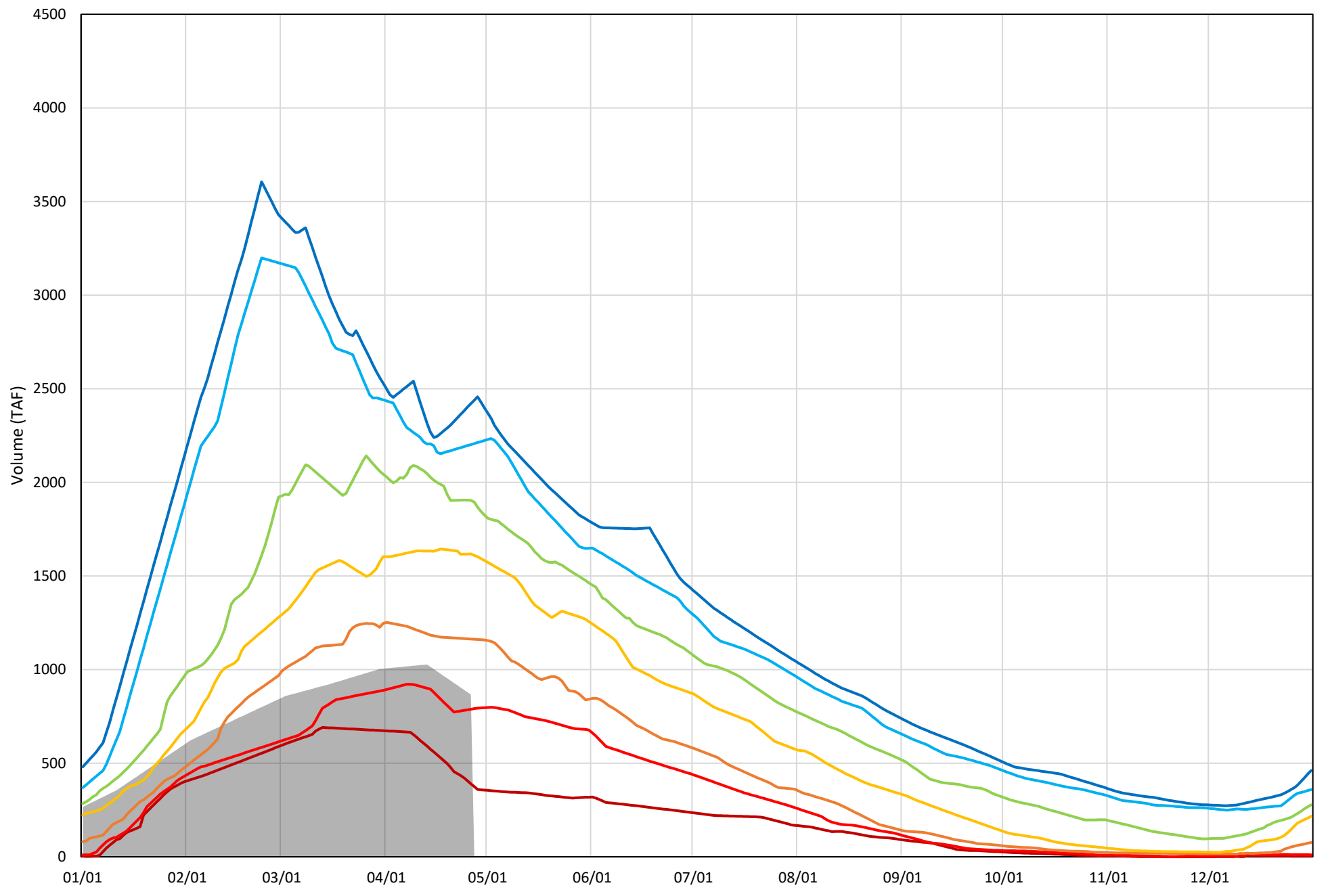
Shasta Lake Cold Water Pool Volume $\leq 50^{\circ}\text{F}$ - Percent Exceedances (1998-2021)

2022 95 90 75 50 25 10 5



Shasta Lake Cold Water Pool Volume $\leq 48^{\circ}\text{F}$ - Percent Exceedances (1998-2021)

2022 95 90 75 50 25 10 5



Shasta Lake Cold Water Pool Comparison by Year (for Specified Date)

Apr-27 2022	Δ TAF				% Δ			
	≤52°	≤50°	≤48°	Abs. Avg.	≤52°	≤50°	≤48°	Abs. Avg.
1998	2042	1910	1611	1854	183	190	186	186
1999	2189	1979	1291	1820	196	197	149	181
2000	1627	1142	387	1052	146	113	45	101
2001	1536	1414	1043	1331	138	140	120	133
2002	1767	1574	989	1443	159	156	114	143
2003	1768	1288	371	1143	159	128	43	110
2004	1476	1314	723	1171	133	131	83	115
2005	1582	1328	283	1065	142	132	33	102
2006	2312	2239	952	1834	208	222	110	180
2007	1570	1468	939	1325	141	146	108	132
2008	810	631	553	665	73	63	64	66
2009	795	688	581	688	71	68	67	69
2010	2062	1577	1049	1563	185	157	121	154
2011	2186	2121	1378	1895	196	211	159	189
2012	2317	1845	1018	1727	208	183	117	170
2013	1482	1315	790	1196	133	131	91	118
2014	425	229	-100	252	38	23	-12	24
2015	440	156	-602	399	39	15	-69	41
2016	1948	1665	182	1265	175	165	21	120
2017	2001	1519	1064	1528	180	151	123	151
2018	1878	1527	335	1247	169	152	39	120
2019	2060	1670	778	1503	185	166	90	147
2020	1644	936	54	878	148	93	6	82
2021	333	234	-58	208	30	23	-7	20
2022	0	0	0	0	0	0	0	0

Historic - Current

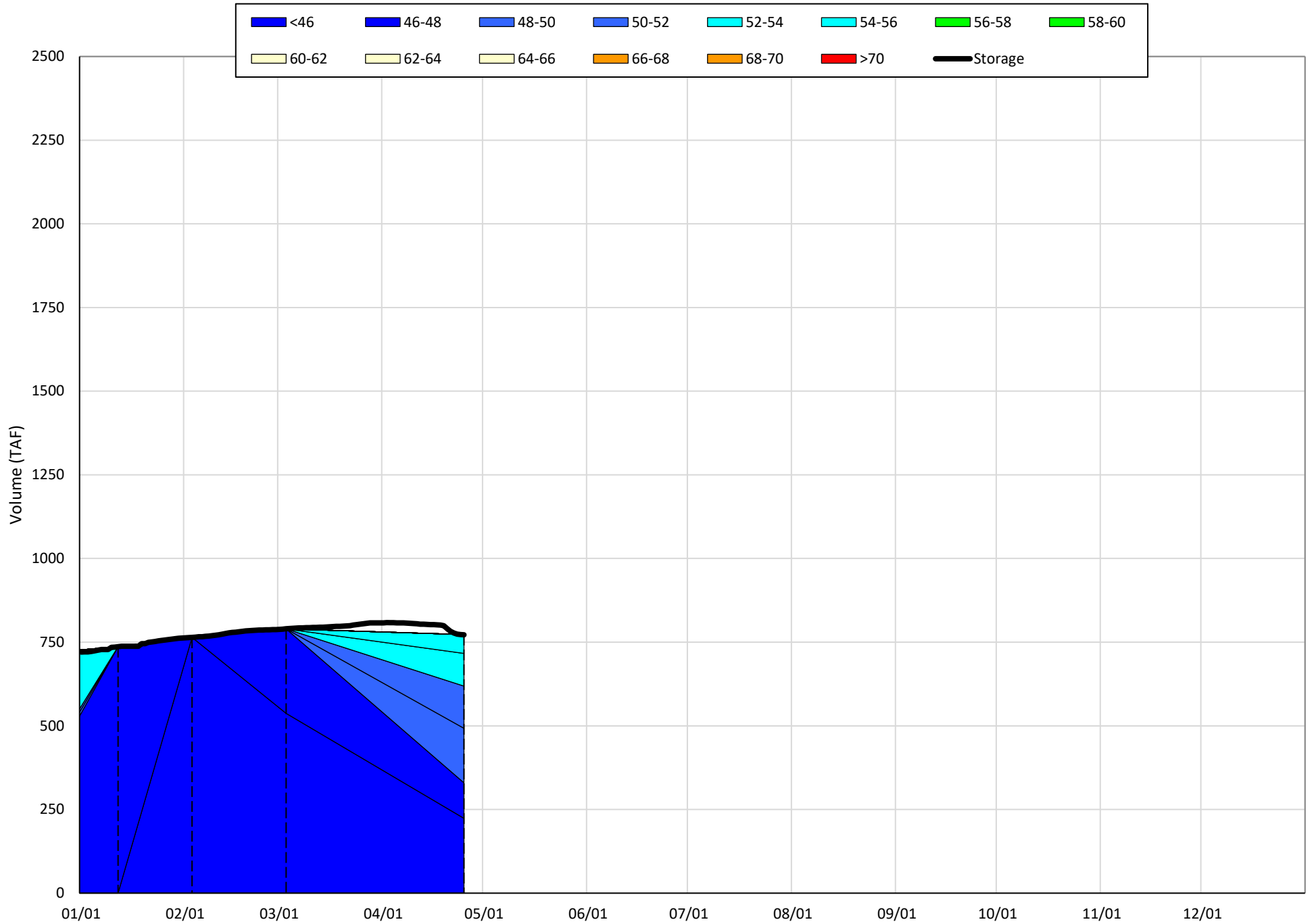
(Historic - Current) / Current

Trinity Lake Isothermobaths & Cold Water Pool Statistics

2022

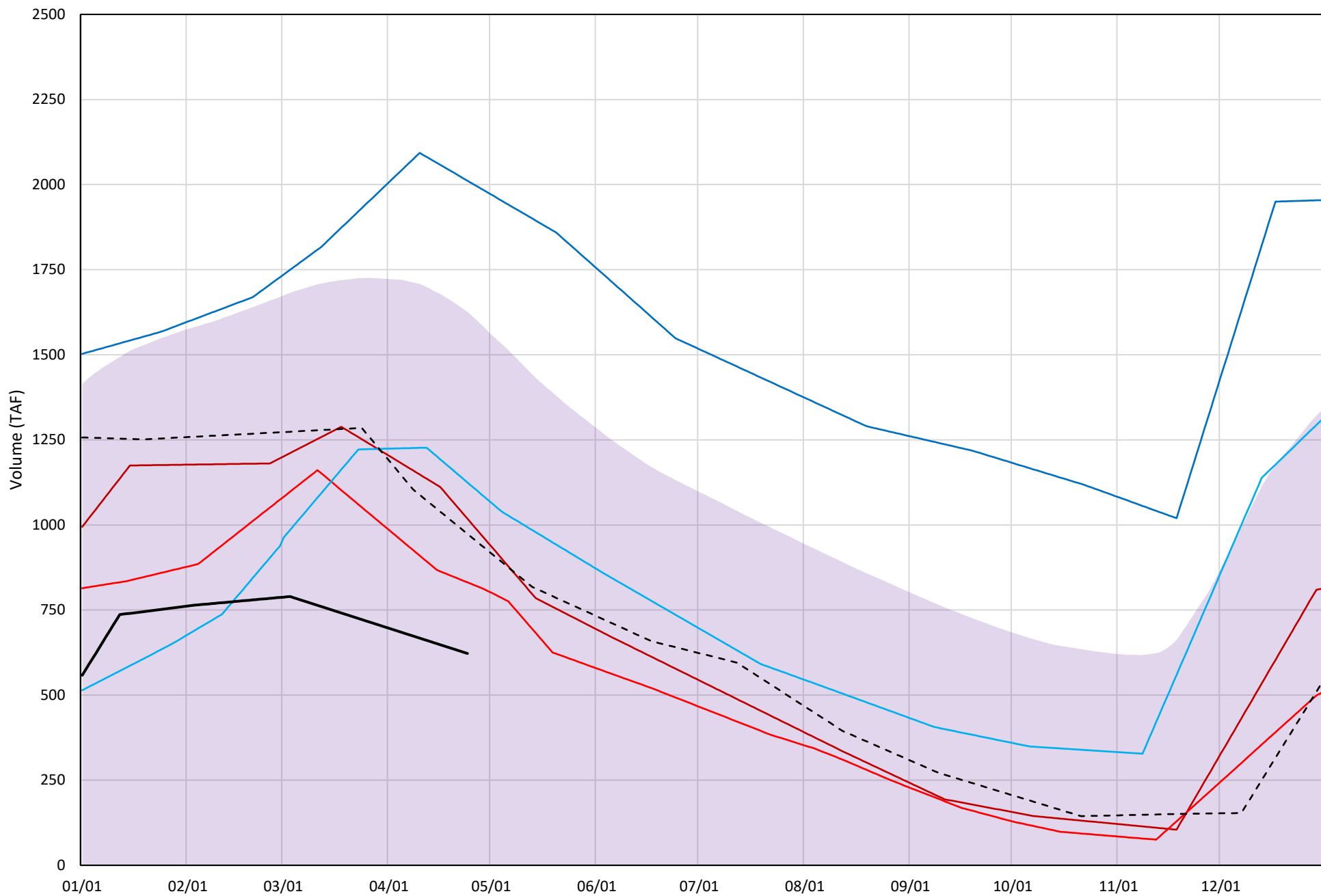
Page	Description
15	- Trinity Lake Isothermobaths Plot
16	- Trinity Lake Cold Water Pool Volume $\leq 52^{\circ}\text{F}$
17	- Trinity Lake Cold Water Pool Volume $\leq 50^{\circ}\text{F}$
18	- Trinity Lake Cold Water Pool Volume $\leq 48^{\circ}\text{F}$
19	- Trinity Lake Cold Water Pool Volume $\leq 52^{\circ}\text{F}$ - Percent Exceedances
20	- Trinity Lake Cold Water Pool Volume $\leq 50^{\circ}\text{F}$ - Percent Exceedances
21	- Trinity Lake Cold Water Pool Volume $\leq 48^{\circ}\text{F}$ - Percent Exceedances
22	- Trinity Lake Cold Water Pool Comparison by Year

Trinity Lake Isothermobaths Plot - 2022



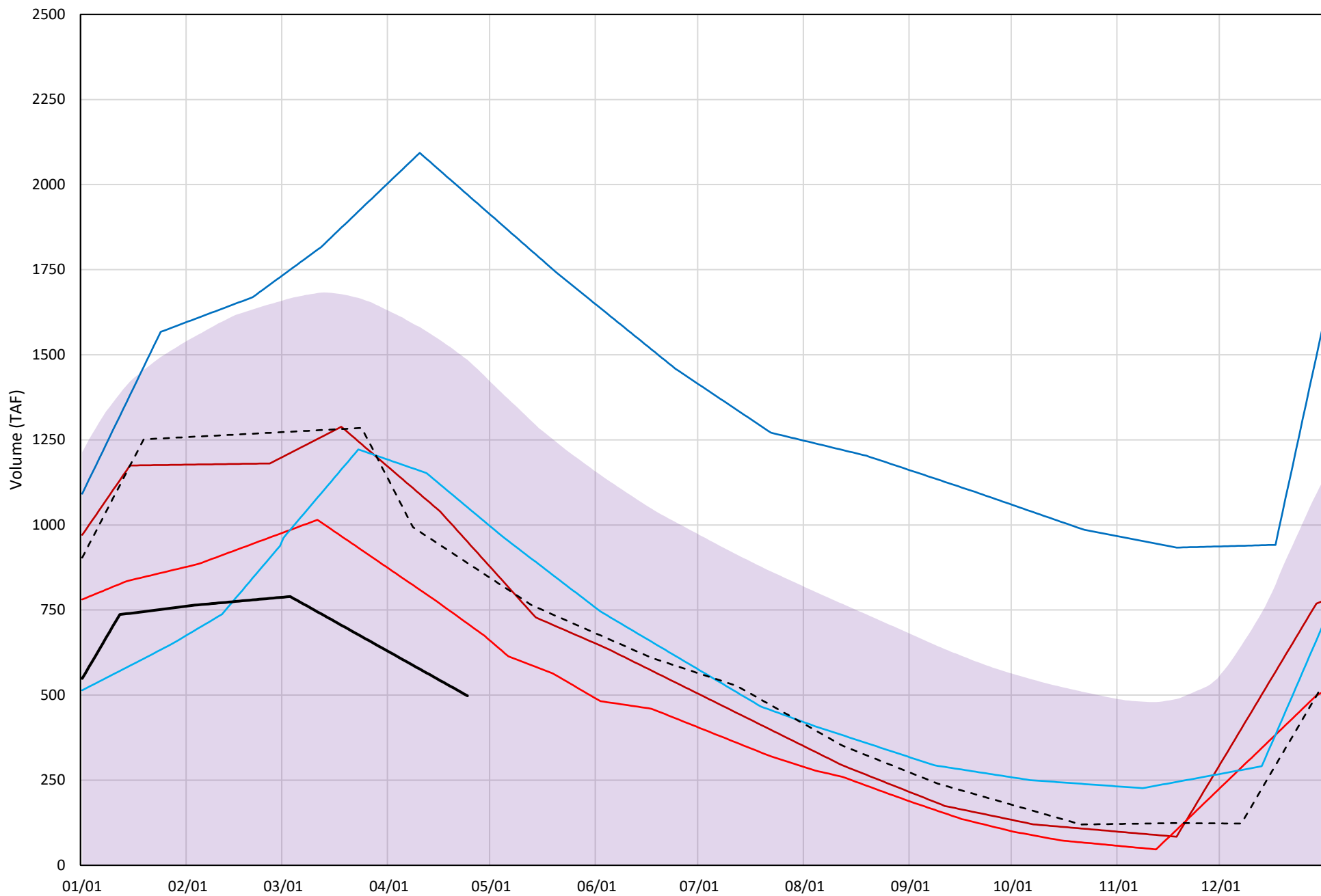
Trinity Lake Cold Water Pool Volume ≤52°F

Avg (2000-2021) 2014 2015 2016 2019 2021 2022



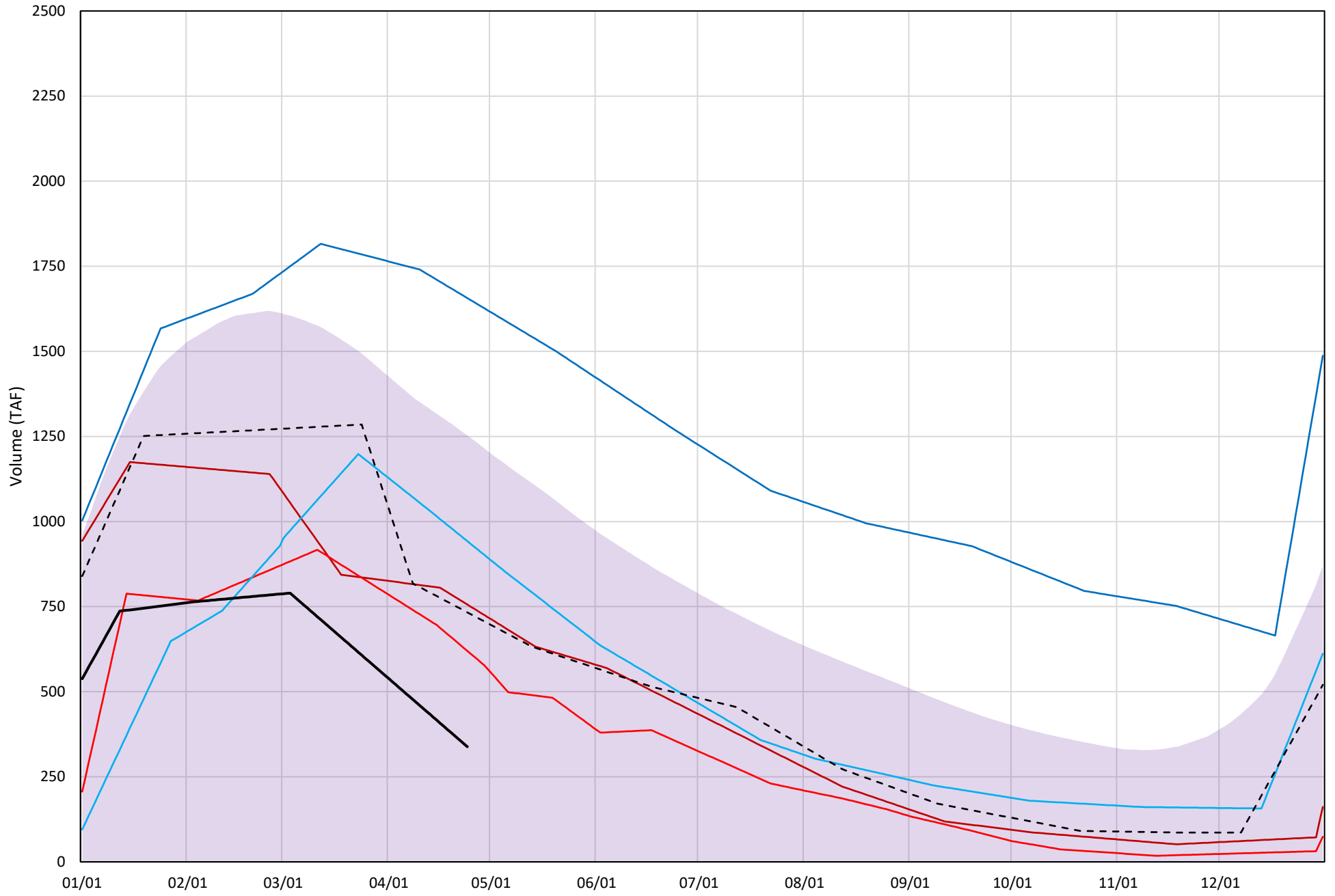
Trinity Lake Cold Water Pool Volume ≤50°F

Avg (2000-2021) 2014 2015 2016 2019 2021 2022

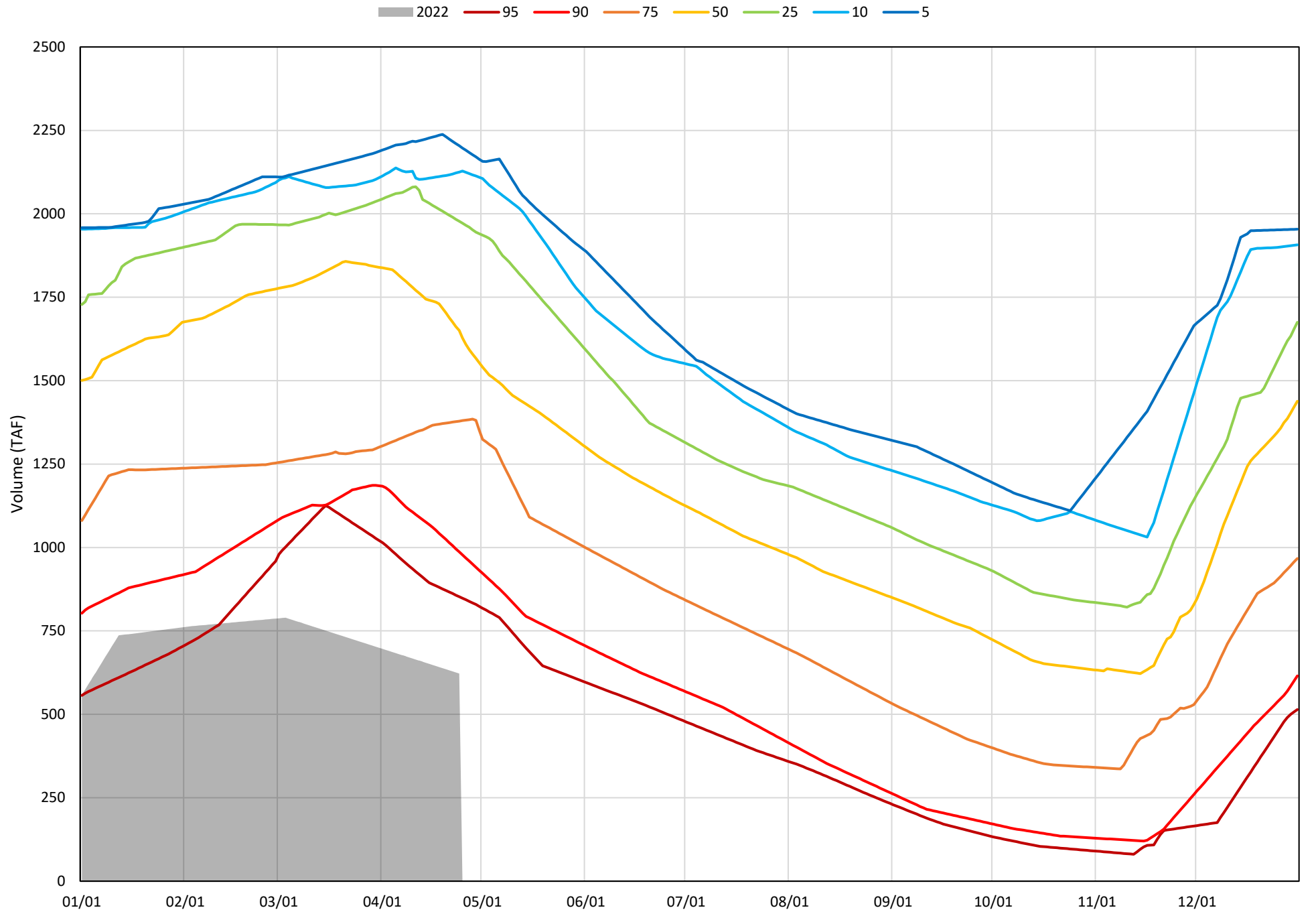


Trinity Lake Cold Water Pool Volume ≤48°F

Avg (2000-2021) 2014 2015 2016 2019 2021 2022

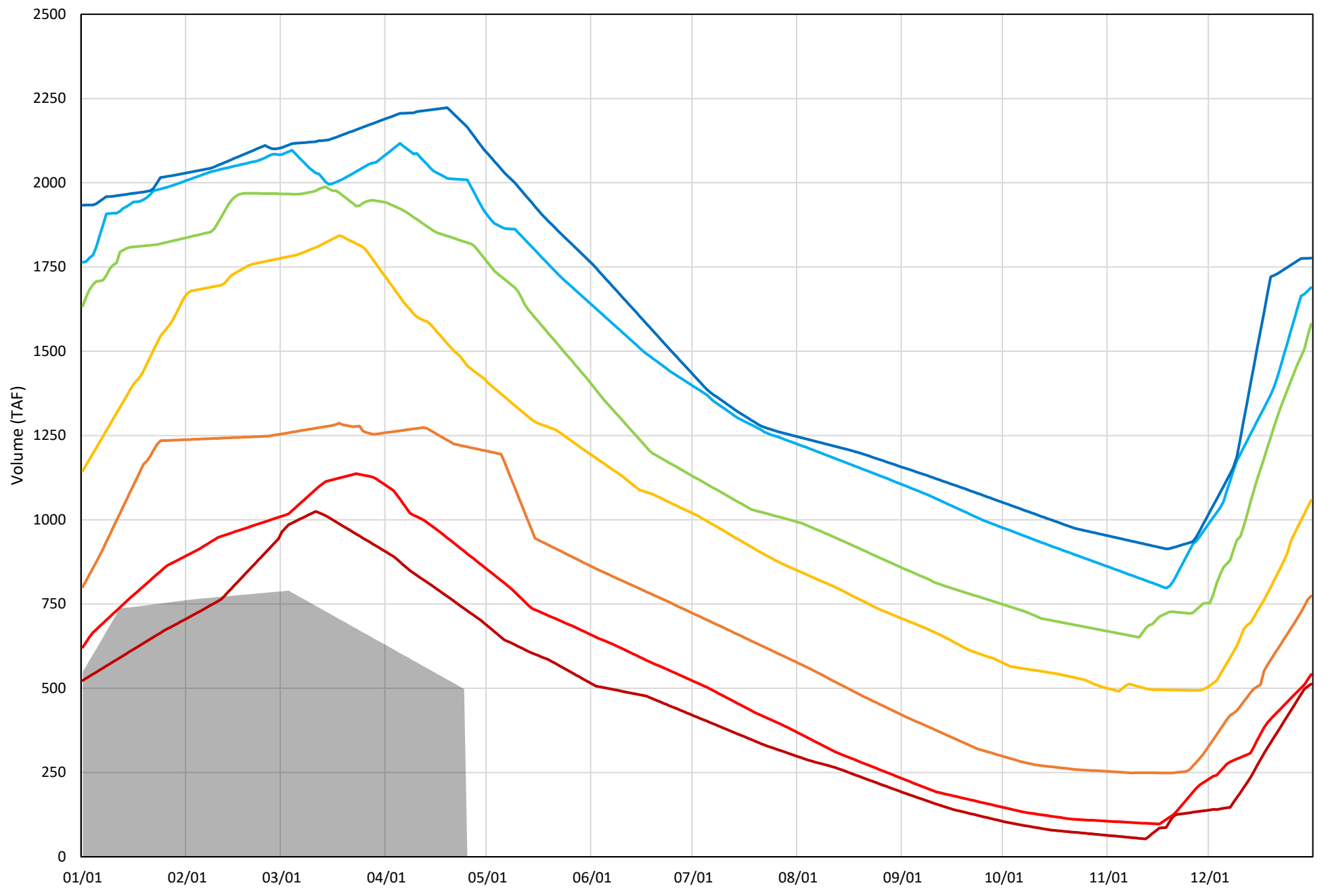


Trinity Lake Cold Water Pool Volume ≤52°F - Percent Exceedances (2000-2021)

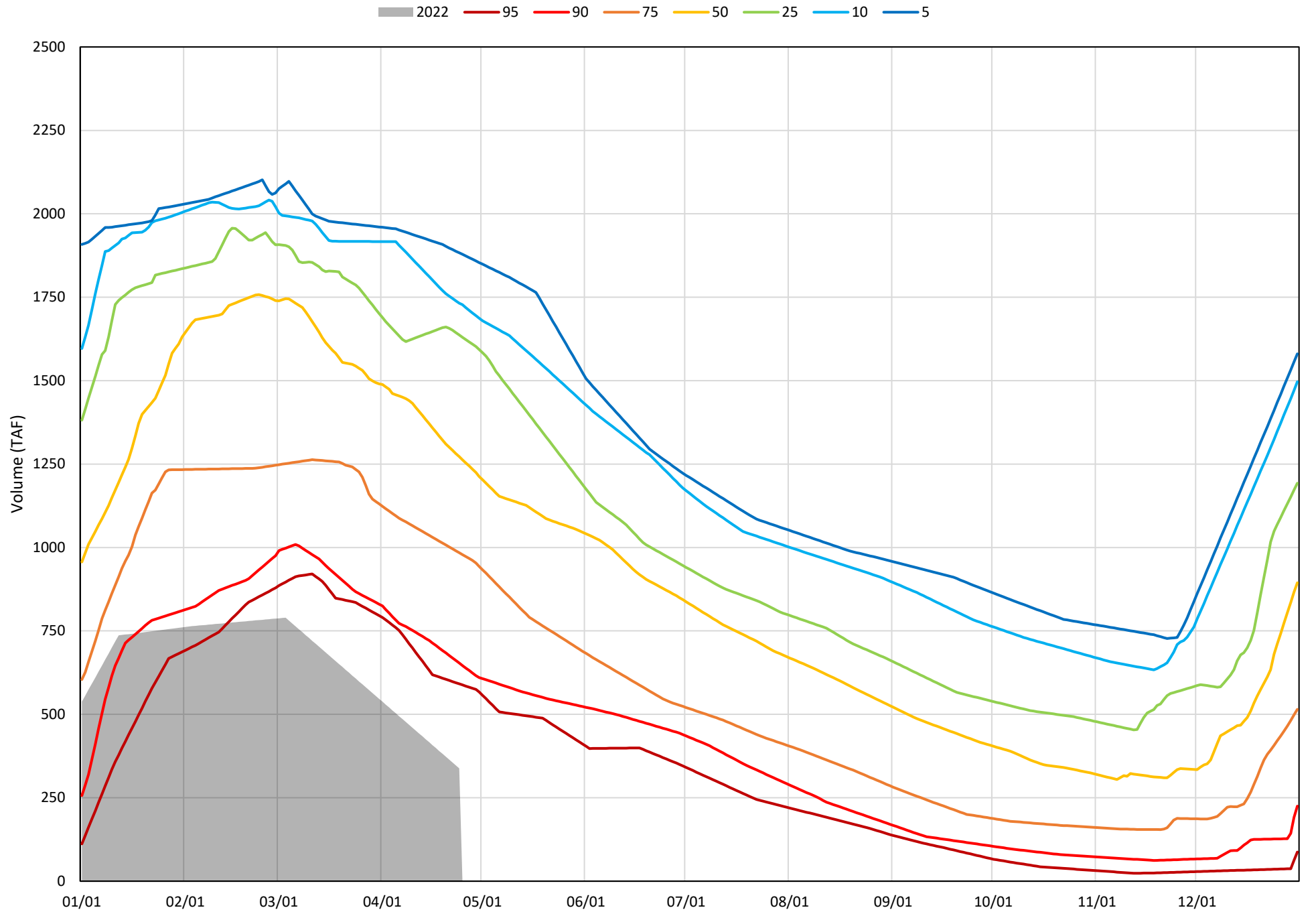


Trinity Lake Cold Water Pool Volume ≤50°F - Percent Exceedances (2000-2021)

2022 95 90 75 50 25 10 5



Trinity Lake Cold Water Pool Volume $\leq 48^{\circ}\text{F}$ - Percent Exceedances (2000-2021)



Trinity Cold Water Pool Comparison by Year (for Specified Date)

	Δ TAF				% Δ			
	$\leq 52^\circ$	$\leq 50^\circ$	$\leq 48^\circ$	Abs. Avg.	$\leq 52^\circ$	$\leq 50^\circ$	$\leq 48^\circ$	Abs. Avg.
Apr-25 2022								
2000	1496	1528	1355	1460	240	307	401	316
2001	901	954	899	918	145	191	266	201
2002	971	961	1017	983	156	193	301	217
2003	1506	1286	1141	1311	242	258	337	279
2004	1151	1113	1087	1117	185	223	321	243
2005	1093	776	687	852	176	156	203	178
2006	1595	1702	1570	1622	256	342	464	354
2007	1021	910	1001	977	164	183	296	214
2008	1030	1117	688	945	165	224	203	198
2009	528	495	248	424	85	99	73	86
2010	833	852	660	782	134	171	195	167
2011	1363	1362	1368	1364	219	273	404	299
2012	1340	1327	1405	1357	215	266	415	299
2013	1026	968	876	957	165	194	259	206
2014	396	453	418	422	64	91	123	93
2015	209	212	282	234	34	43	83	53
2016	502	554	604	553	81	111	179	123
2017	1353	1329	1292	1325	217	267	382	289
2018	998	978	969	981	160	196	286	214
2019	1389	1472	1318	1393	223	296	390	303
2020	1032	974	846	950	166	196	250	204
2021	351	390	395	379	56	78	117	84
2022	0	0	0	0	0	0	0	0

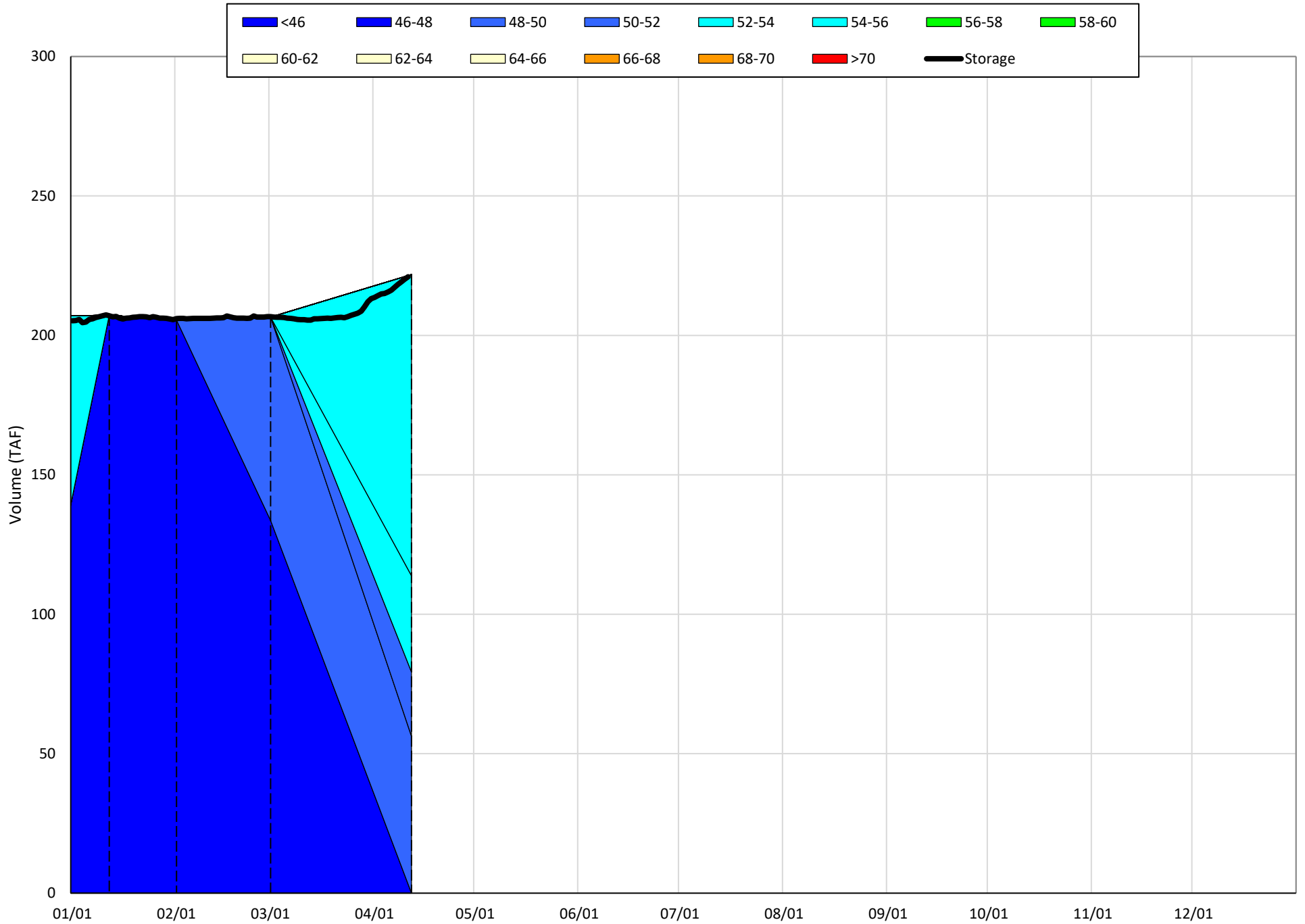
} Historic - Current
} (Historic - Current) / Current

Whiskeytown Lake Isothermobaths & Cold Water Pool Statistics

2022

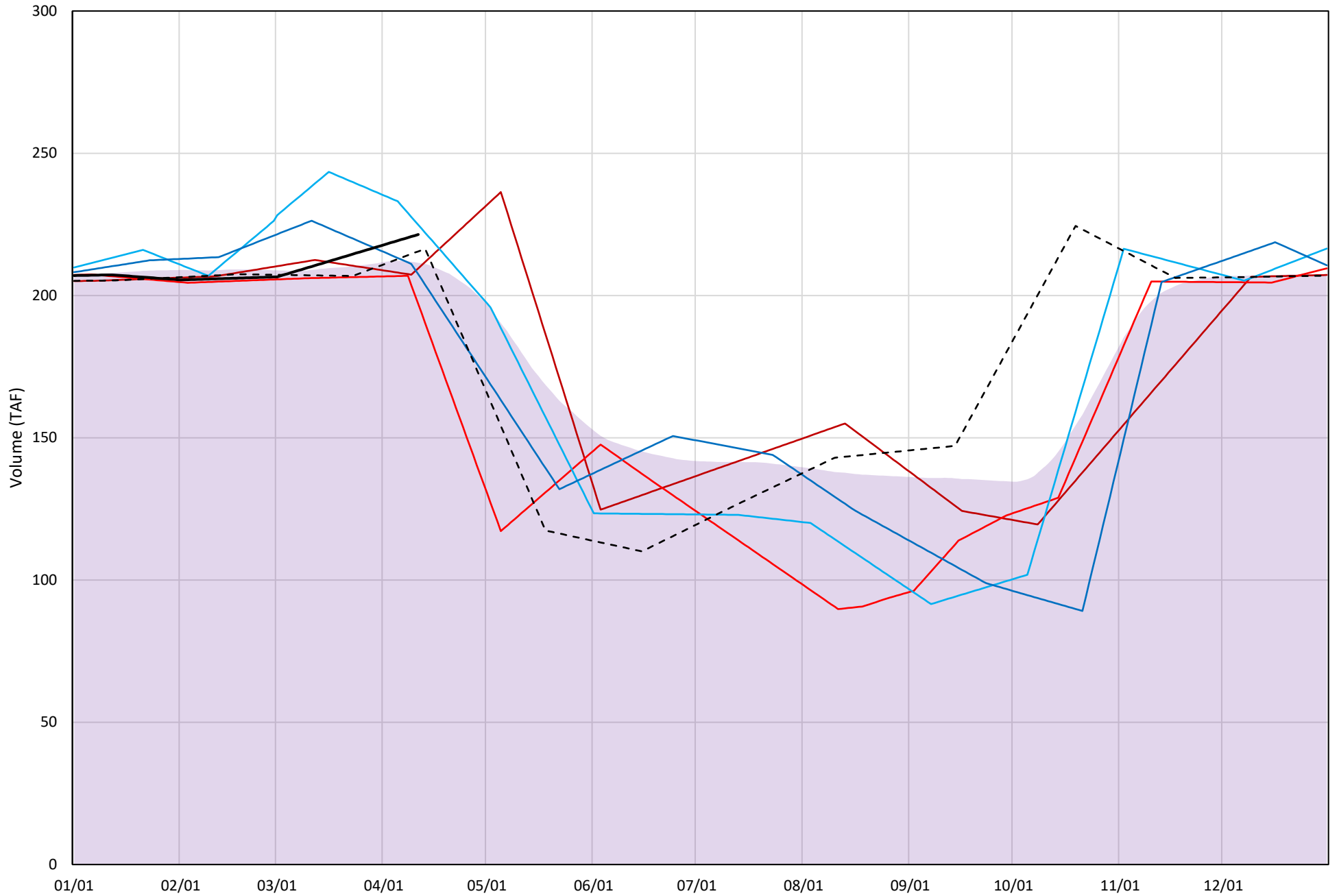
Page	Description
24	- Whiskeytown Lake Isothermobaths Plot
25	- Whiskeytown Lake Cold Water Pool Volume $\leq 60^{\circ}\text{F}$
26	- Whiskeytown Lake Cold Water Pool Volume $\leq 58^{\circ}\text{F}$
27	- Whiskeytown Lake Cold Water Pool Volume $\leq 56^{\circ}\text{F}$
28	- Whiskeytown Lake Cold Water Pool Volume $\leq 60^{\circ}\text{F}$ - Percent Exceedances
29	- Whiskeytown Lake Cold Water Pool Volume $\leq 58^{\circ}\text{F}$ - Percent Exceedances
30	- Whiskeytown Lake Cold Water Pool Volume $\leq 56^{\circ}\text{F}$ - Percent Exceedances
31	- Whiskeytown Lake Cold Water Pool Comparison by Year

Whiskeytown Lake Isothermobaths Plot - 2022



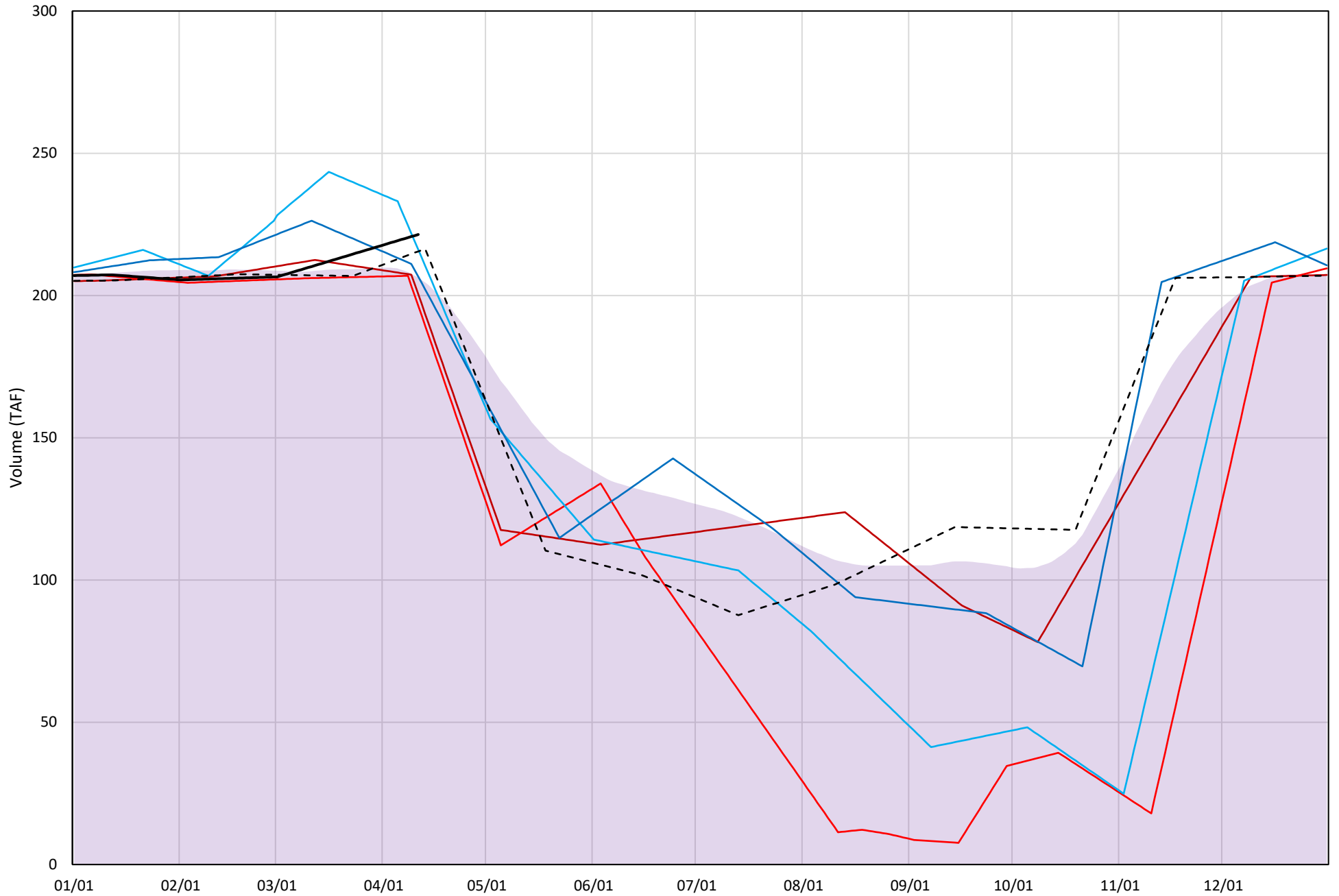
Whiskeytown Lake Cold Water Pool Volume $\leq 60^{\circ}\text{F}$

Avg (2000-2021) 2014 2015 2016 2019 2021 2022



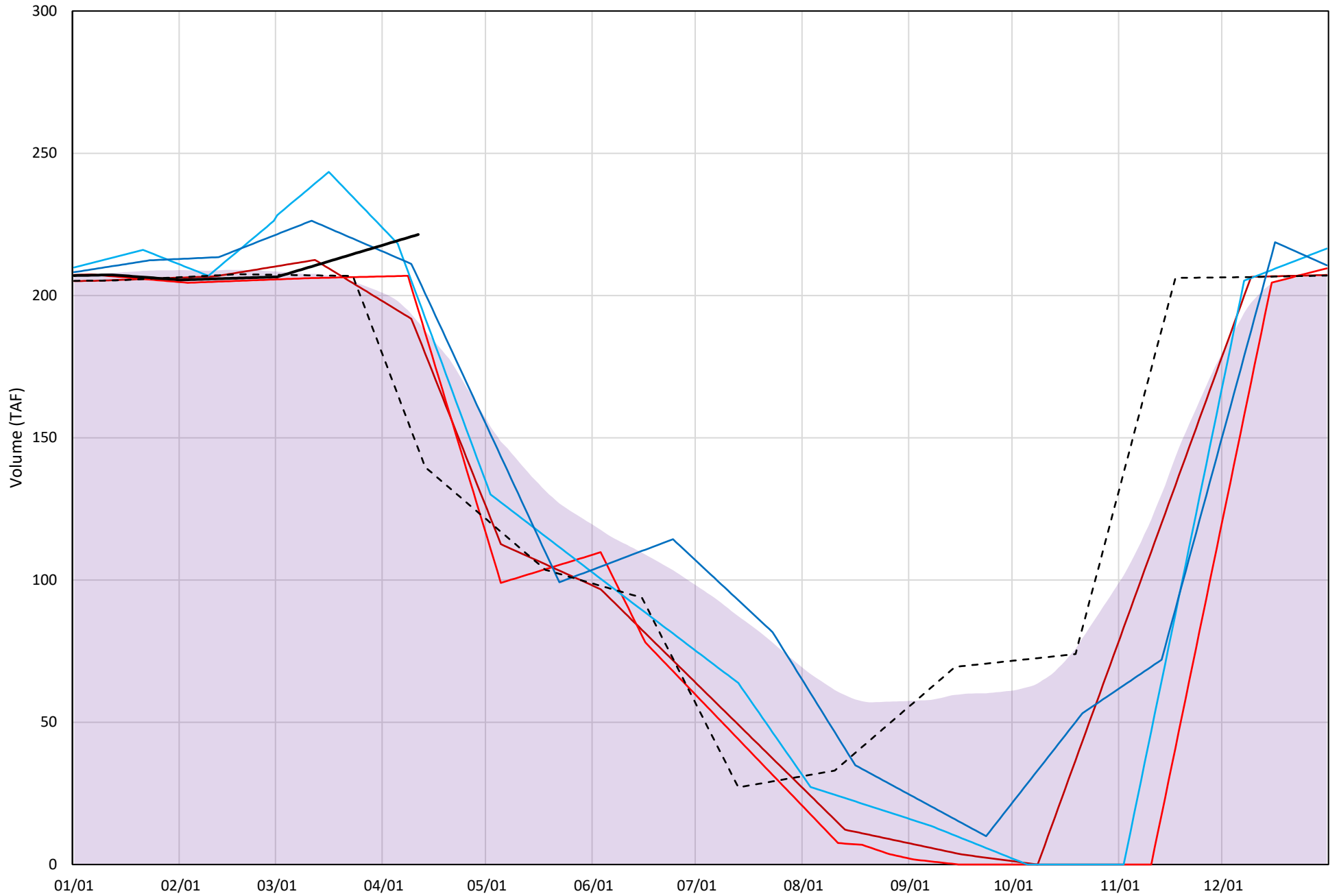
Whiskeytown Lake Cold Water Pool Volume $\leq 58^{\circ}\text{F}$

Avg (2000-2021) 2014 2015 2016 2019 2021 2022



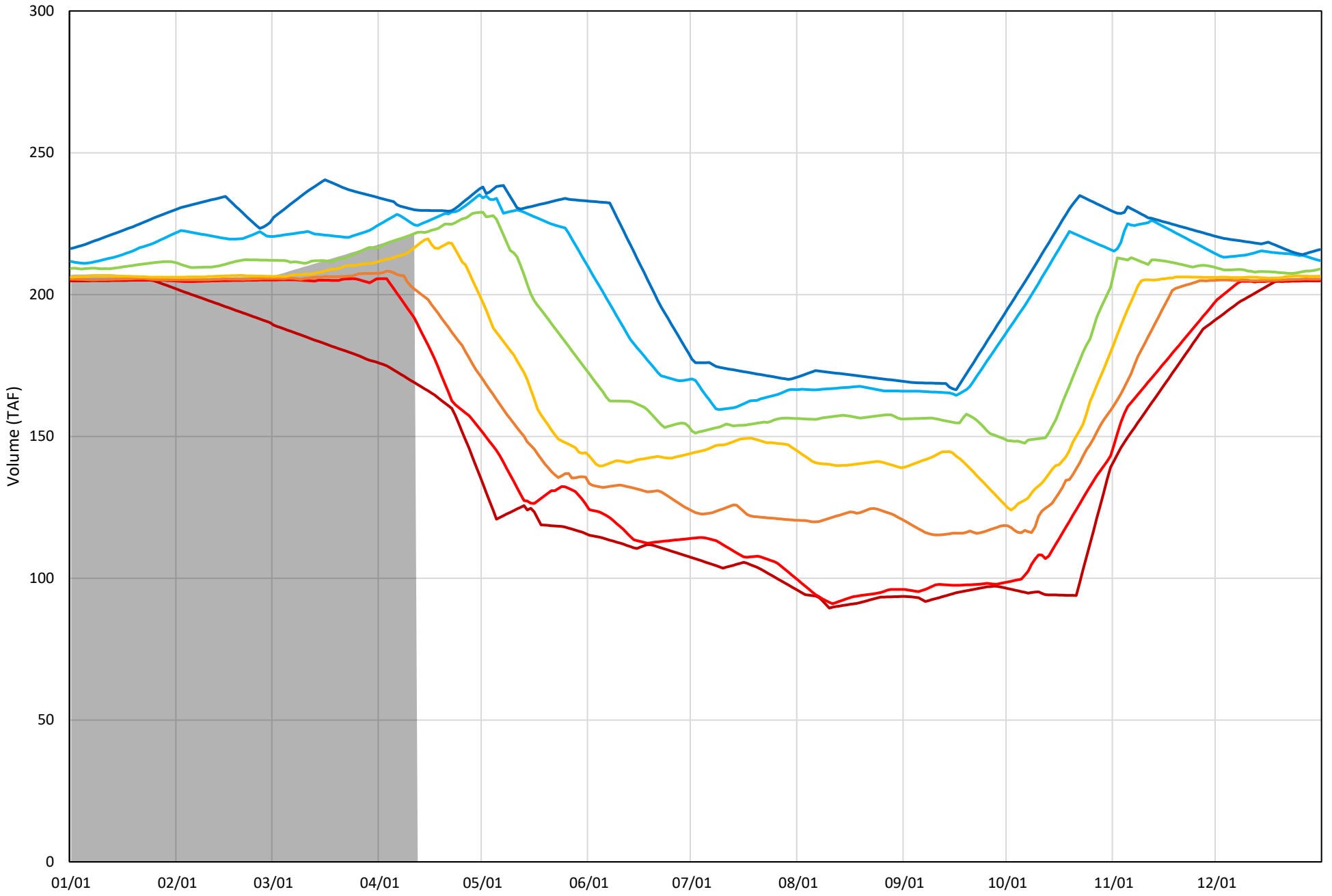
Whiskeytown Lake Cold Water Pool Volume $\leq 56^{\circ}\text{F}$

Avg (2000-2021) 2014 2015 2016 2019 2021 2022

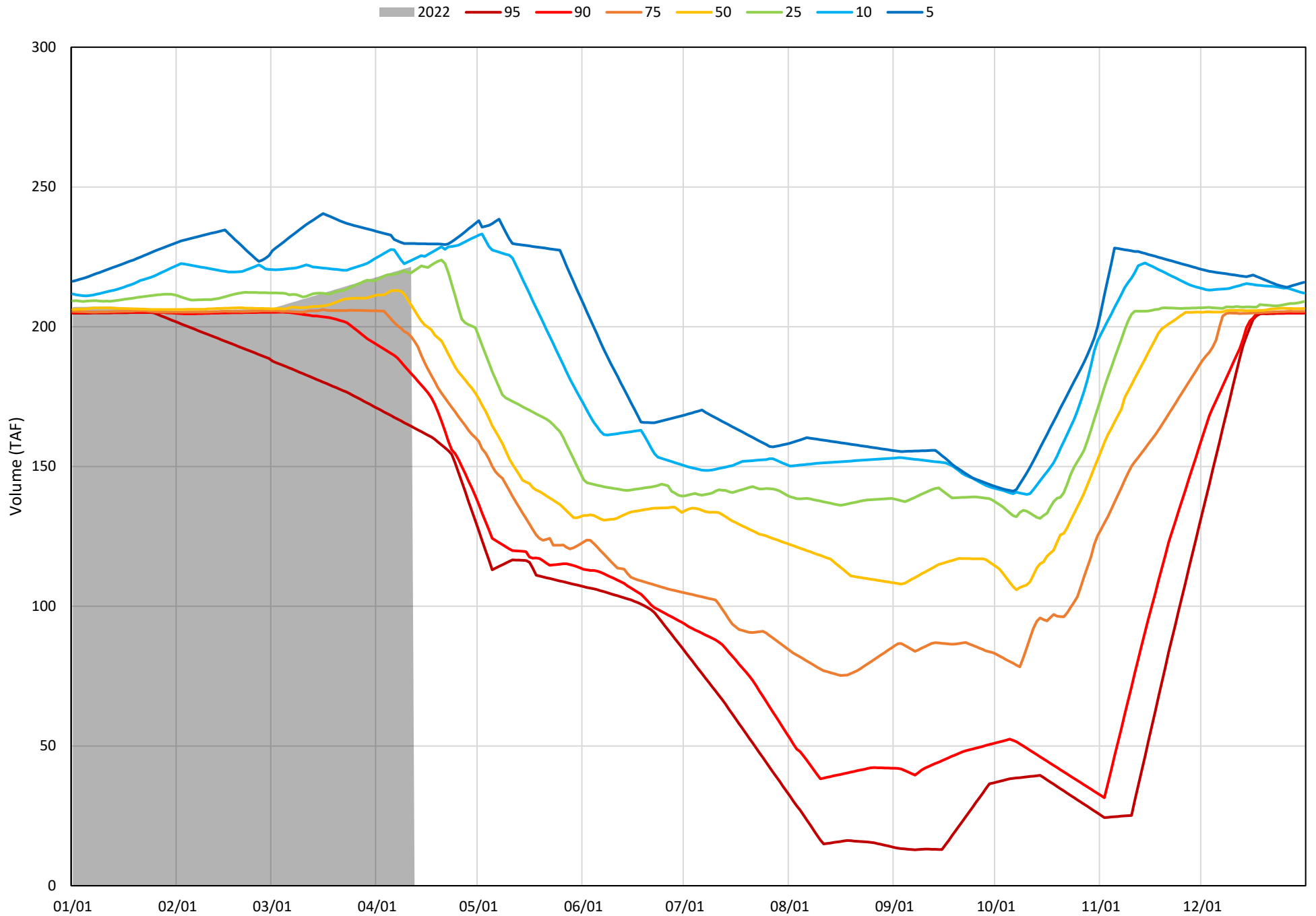


Whiskeytown Lake Cold Water Pool Volume $\leq 60^{\circ}\text{F}$ - Percent Exceedances (2000-2021)

2022 95 90 75 50 25 10 5

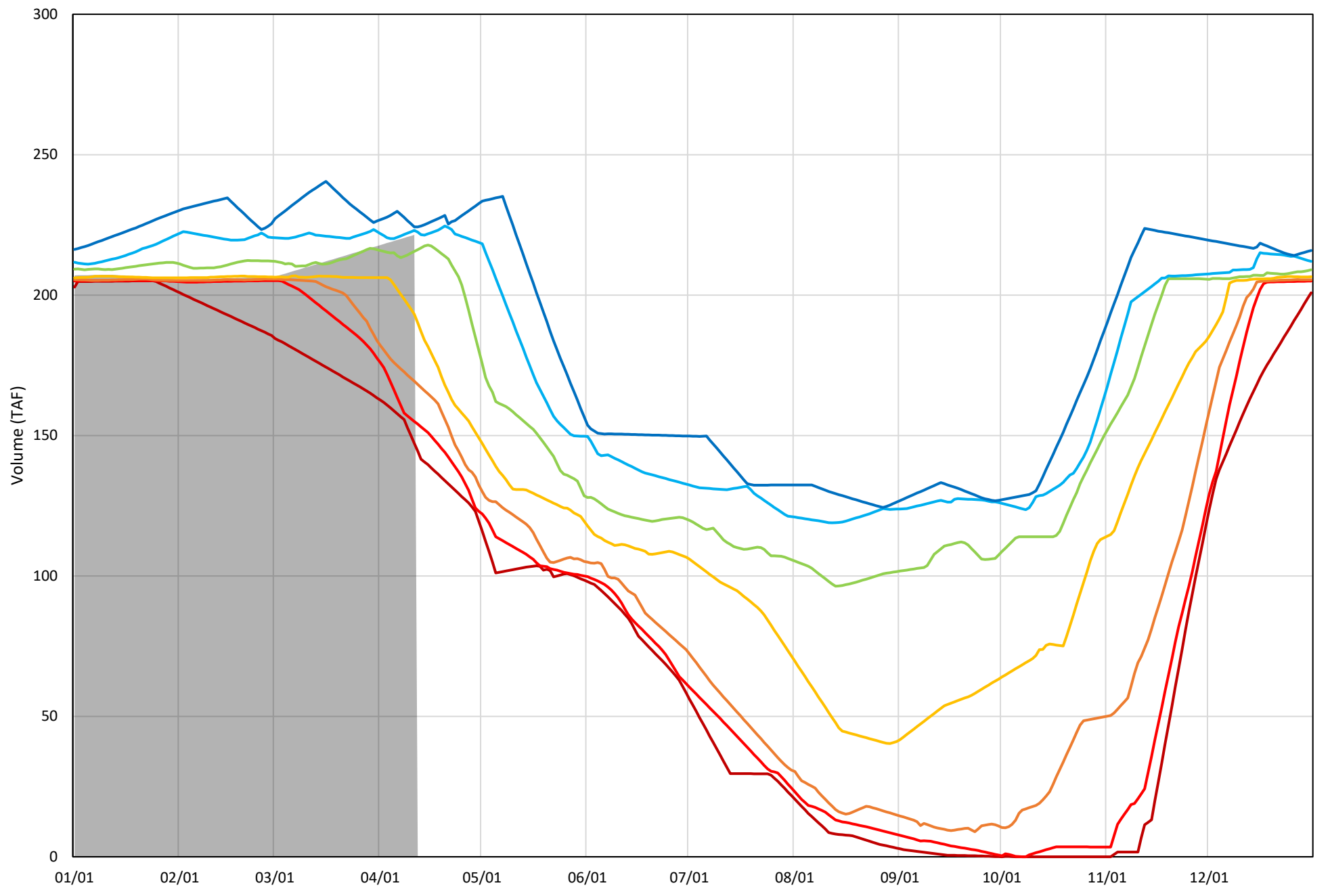


Whiskeytown Lake Cold Water Pool Volume $\leq 58^{\circ}\text{F}$ - Percent Exceedances (2000-2021)



Whiskeytown Lake Cold Water Pool Volume $\leq 56^{\circ}\text{F}$ - Percent Exceedances (2000-2021)

2022 95 90 75 50 25 10 5



Whiskeytown Cold Water Pool Comparison by Year (for Specified Date)

Apr-12 2022	Δ TAF				% Δ			
	≤60°	≤58°	≤56°	Abs. Avg.	≤60°	≤58°	≤56°	Abs. Avg.
2000	1.6	1.6	-59.7	21.0	0.7	0.7	-27.0	9.5
2001	-4.8	-23.1	-63.2	30.4	-2.1	-10.4	-28.6	13.7
2002	-3.7	-40.7	-56.8	33.8	-1.7	-18.4	-25.7	15.2
2003	-5.1	-5.1	-5.1	5.1	-2.3	-2.3	-2.3	2.3
2004	-7.7	-23.9	-50.6	27.4	-3.5	-10.8	-22.8	12.4
2005	2.5	2.5	2.5	2.5	1.1	1.1	1.1	1.1
2006	-2.9	-2.9	-2.9	2.9	-1.3	-1.3	-1.3	1.3
2007	-18.2	-21.6	-34.2	24.6	-8.2	-9.7	-15.4	11.1
2008	-2.7	-2.7	-6.2	3.8	-1.2	-1.2	-2.8	1.7
2009	-23.2	-26.8	-30.0	26.7	-10.5	-12.1	-13.5	12.0
2010	-0.7	-0.7	-0.7	0.7	-0.3	-0.3	-0.3	0.3
2011	9.3	9.3	2.9	7.2	4.2	4.2	1.3	3.3
2012	-56.0	-59.9	-67.8	61.2	-25.3	-27.1	-30.6	27.7
2013	-31.9	-32.3	-39.3	34.5	-14.4	-14.6	-17.7	15.6
2014	-11.9	-21.0	-35.7	22.9	-5.4	-9.5	-16.1	10.3
2015	-24.5	-25.1	-26.5	25.4	-11.1	-11.3	-12.0	11.4
2016	3.4	-5.3	-22.8	10.5	1.5	-2.4	-10.3	4.7
2017	2.0	-12.5	-24.9	13.1	0.9	-5.6	-11.2	5.9
2018	-24.3	-25.0	-26.1	25.1	-11.0	-11.3	-11.8	11.3
2019	-14.0	-14.8	-15.5	14.8	-6.3	-6.7	-7.0	6.7
2020	-0.4	-0.4	-41.1	14.0	-0.2	-0.2	-18.6	6.3
2021	-5.9	-5.9	-75.4	29.1	-2.7	-2.7	-34.0	13.1
2022	0.0	0.0	0.0	0.0	0.0	0.0	0.0	0.0

Historic - Current

(Historic - Current) / Current