

Northern CVP Water Temperature Report

April - 2021

Page	Description
2	- Mean Daily Water Temperature, Release Flow Rates and Air Temperatures with Monthly Averages
3	- Redding 10-Day Forecasted Air Temperatures
4	- Sacramento River Mean Daily Water Temperature, Air Temperature and 10-Day Forecasted Air Temperature Plot - Water Temperature Measuring Station Details - Temperature Control Point Details
5	- Shasta Lake Isothermobaths & Cold Water Pool Statistics
14	- Trinity Lake Isothermobaths & Cold Water Pool Statistics
23	- Whiskeytown Lake Isothermobaths & Cold Water Pool Statistics
x	- TCD Configuration (External Link)



— BUREAU OF —
RECLAMATION

All Data in this Report is Preliminary and Subject to Change

DATE	Mean Daily Water Temperatures (°F)														Mean Daily Release (CFS)			Mean Daily Air Temperatures (°F)			
	TCD ¹	SHD	SPP ¹	KWK	SAC	CCR ²	BSF	JLF	BND	RDB	IGO ³	LWS	DGC	NFH	Shasta Generation	Spring Creek P.P.	Keswick Total	RDD	BSF	RDB	
Mar	49.7	49.1	48.5	49.7	50.1	50.5	51.4	51.9	52.6	52.5	48.4	48.0	48.0	47.8	3089	172	3644	53.0	51.3	53.2	
04/01	50.2	49.7	49.7	51.1	51.8	52.7	54.6	55.8	56.8	57.0	50.7	50.5	52.7	52.0	3597	77	3456	61.0	59.2	62.3	
04/02	50.0	49.4	49.5	51.4	52.0	52.7	54.7	55.9	56.8	57.3	50.6	50.5	53.0	52.3	3644	139	4037	60.5	58.5	61.5	
04/03	50.0	49.5	49.4	51.1	51.8	52.6	54.3	55.4	56.2	56.8	50.6	50.7	52.6	52.2	3998	168	4496	58.0	56.9	59.5	
04/04	49.9	49.5	49.1	50.7	51.6	52.4	54.2	55.4	56.3	56.7	50.9	51.4	53.1	52.7	4164	497	4495	56.5	56.1	57.6	
04/05	49.9	49.3	49.7	50.6	51.5	52.4	54.5	55.9	56.8	57.2	51.5	51.3	55.4	54.1	4252	74	4496	62.0	59.1	58.9	
04/06	49.9	? 49.4	-	50.9	51.8	52.5	54.5	55.8	56.8	57.4	51.3	51.0	55.1	54.2	3791	0	4500	60.5	58.5	60.9	
04/07	49.8	49.5	-	50.8	51.8	52.6	54.9	56.2	57.1	57.6	51.4	51.2	55.2	54.1	3723	0	4551	60.0	58.0	58.8	
04/08	49.9	? 49.6	50.2	50.9	51.6	52.3	54.3	55.7	56.7	57.4	50.9	51.4	54.1	53.1	4445	45	4968	58.5	58.1	59.2	
04/09	50.1	? 49.8	49.8	50.8	51.7	52.4	54.2	55.4	56.3	56.9	51.2	51.9	54.3	53.1	4761	76	4956	58.5	57.2	59.1	
04/10	49.9	50.2	49.8	50.8	51.6	52.3	54.4	55.7	56.7	57.2	51.2	51.2	54.4	52.9	2505	754	4951	61.5	60.1	62.5	
04/11	50.7	51.7	49.6	51.1	51.8	52.5	54.3	55.5	56.6	57.1	51.4	50.4	54.5	53.5	4697	398	4944	66.5	63.7	65.3	
04/12	51.1	50.5	49.9	51.9	52.3	53.0	? 54.5	55.7	56.7	57.1	51.4	50.3	54.4	53.9	4253	52	4950	67.0	67.7	67.2	
04/13	50.9	50.3	50.2	51.8	52.4	53.1	54.9	55.9	56.7	57.0	51.2	50.0	54.1	53.8	4739	50	5485	61.5	59.5	61.4	
04/14	51.3	50.7	50.1	51.4	52.2	52.8	? 54.2	55.2	56.1	56.7	51.1	50.0	53.7	53.2	5031	39	6007	63.5	63.1	63.2	
04/15	50.6	? 50.2	49.3	51.7	52.2	52.7	54.3	55.3	56.3	56.8	51.1	49.5	57.0	53.7	5308	217	6014	58.5	57.3	59.2	
04/16	50.7	? 50.3	50.1	51.8	52.5	53.2	54.9	55.9	56.8	57.1	51.6	49.3	57.9	54.8	5603	40	6011	63.5	61.5	64.8	
04/17	50.7	? 50.1	50.4	51.4	52.2	52.9	54.9	56.2	57.2	57.9	51.7	49.8	55.9	53.0	5526	40	6015	65.0	63.5	67.7	
04/18	50.6	? 52.2	50.4	51.3	52.1	52.8	54.7	56.0	57.0	57.7	51.9	49.4	56.9	53.6	4752	40	6562	67.0	64.6	67.5	
04/19	? 50.6	52.3	? 50.2	52.2	52.6	53.2	54.9	56.2	57.2	57.9	52.4	49.4	57.8	54.5	4232	40	6481	68.0	66.5	67.6	
04/20	51.3	55.1	50.5	53.1	53.4	54.0	55.7	56.9	57.8	58.3	52.1	49.5	55.4	53.7	2736	62	6460	64.0	61.3	64.7	
04/21	50.8	55.9	49.6	54.2	54.2	54.7	55.9	56.9	57.7	58.2	52.0	50.5	53.6	54.0	2014	323	7013	69.0	66.5	69.1	
04/22	50.3	55.3	50.5	55.0	55.2	55.9	57.2	57.9	58.5	58.8	51.9	50.4	53.4	54.6	1297	76	7064	63.5	60.7	62.8	
04/23	49.2	55.8	50.5	55.7	55.7	56.4	57.6	58.5	59.1	59.8	51.8	51.2	52.7	53.5	36	77	7520	62.0	61.3	61.9	
04/24	49.4	55.2	50.2	56.1	55.9	56.4	57.5	58.4	59.1	59.6	51.6	50.3	52.7	53.9	29	145	7510	61.5	60.3	59.7	
04/25	50.0	54.6	49.8	55.6	55.6	55.8	56.1	56.3	56.7	57.4	50.2	50.2	51.1	51.8	564	452	7521	49.5	51.9	52.5	
04/26	50.1	55.7	50.8	54.7	55.0	55.4	56.1	56.3	56.5	56.5	50.6	50.1	51.4	51.5	628	78	7472	51.0	49.7	51.8	
04/27	49.7	56.4	50.7	55.5	55.6	56.0	56.7	57.2	57.7	58.2	51.6	49.9	51.8	52.9	310	77	7468	62.0	59.2	61.3	
04/28	49.5	56.8	50.9	56.7	56.7	57.3	58.4	58.9	59.3	59.6	52.2	49.8	50.4	52.9	26	77	7471	65.5	63.6	66.4	
04/29	49.4	56.9	50.8	57.3	57.6	58.1	59.4	60.2	60.7	61.3	52.6	49.1	51.0	52.7	27	81	7468	69.5	65.8	66.7	
04/30	49.5	57.1	50.9	57.8	58.1	58.7	60.1	61.0	61.6	62.4	52.8	48.9	51.4	53.3	28	77	7465	71.5	67.8	70.5	
-																					
Apr	50.2	52.3	50.1	52.8	53.4	54.0	55.6	56.6	57.4	57.9	51.4	50.3	53.9	53.3	3024	142	5927	62.2	60.6	62.4	
															Total CFS	90716	4271	177807			
															Total AF	179931	8471	352673			

Legend

- ? = 1-9 hours of data missing (Average includes estimations)
- ! = 10 or more hours of data missing (Average not calculated)
- # = Station out of service
- ↑ = Record high air temperature
- ↓ = Record low air temperature
- = Monthly Averages

Notes

- ¹ Temperatures are weighted averages based on individual penstock flow and temperature
- Highlighted cells in the TCD column indicate a TCD change was made on that day
- ² Current Sacramento River control point (see page 4 for more details)

D A T E	Redding (RDD) Daily Air Temperatures (°F)																																				
	Actual			Forecasted																																	
	Previous Day			Current Day			1 Day			2 Days			3 Days			4 Days			5 Days			6 Days			7 Days			8 Days			9 Days			10 Days			
	↓	↑	Avg	↓	↑	Avg	↓	↑	Avg	↓	↑	Avg	↓	↑	Avg	↓	↑	Avg	↓	↑	Avg	↓	↑	Avg	↓	↑	Avg	↓	↑	Avg	↓	↑	Avg	↓	↑	Avg	
04/01	50	82	66.0	44	84	64.0	47	79	63.0	48	76	62.0	48	72	60.0	47	64	55.5	45	65	55.0	44	66	55.0	49	78	63.5	49	80	64.5	51	79	65.0	52	77	64.5	
04/02	42	80	61.0	45	79	62.0	49	76	62.5	47	73	60.0	45	65	55.0	43	72	57.5	44	72	58.0	45	73	59.0	51	78	64.5	48	77	62.5	50	79	64.5	52	76	64.0	
04/03	43	78	60.5	43	76	59.5	46	73	59.5	46	68	57.0	42	73	57.5	46	75	60.5	45	73	59.0	45	71	58.0	47	69	58.0	47	77	62.0	47	73	60.0	44	70	57.0	
04/04	40	76	58.0	43	73	58.0	45	71	58.0	43	75	59.0	46	75	60.5	46	74	60.0	44	72	58.0	43	73	58.0	48	76	62.0	46	78	62.0	49	74	61.5	49	76	62.5	
04/05	42	71	56.5	52	72	62.0	43	77	60.0	47	75	61.0	44	75	59.5	44	77	60.5	45	79	62.0	47	79	63.0	49	80	64.5	48	84	66.0	49	83	66.0	51	76	63.5	
04/06	51	73	62.0	45	77	61.0	47	74	60.5	43	75	59.0	44	77	60.5	44	78	61.0	46	82	64.0	49	82	65.5	52	77	64.5	49	81	65.0	49	79	64.0	50	75	62.5	
04/07	44	77	60.5	48	73	60.5	42	73	57.5	44	76	60.0	45	78	61.5	47	84	65.5	47	84	65.5	46	83	64.5	55	78	66.5	49	72	60.5	50	74	62.0	49	73	61.0	
04/08	47	73	60.0	43	73	58.0	44	77	60.5	45	79	62.0	47	82	64.5	48	84	66.0	47	83	65.0	48	83	65.5	49	76	62.5	48	78	63.0	49	75	62.0	50	75	62.5	
04/09	42	75	58.5	42	77	59.5	44	77	60.5	45	82	63.5	47	84	65.5	47	77	62.0	47	77	62.0	47	79	63.0	48	78	63.0	49	83	66.0	52	84	68.0	53	82	67.5	
04/10	41	76	58.5	43	79	61.0	47	81	64.0	49	82	65.5	48	76	62.0	46	75	60.5	45	76	60.5	45	78	61.5	49	71	60.0	49	80	64.5	50	77	63.5	51	69	60.0	
04/11	42	81	61.5	56	82	69.0	50	83	66.5	49	75	62.0	46	73	59.5	44	76	60.0	45	78	61.5	47	79	63.0	51	80	65.5	52	85	68.5	53	82	67.5	52	80	66.0	
04/12	51	82	66.5	62	82	72.0	48	75	61.5	47	73	60.0	43	76	59.5	45	82	63.5	48	87	67.5	49	90	69.5	55	87	71.0	53	85	69.0	53	80	66.5	52	79	65.5	
04/13	52	82	67.0	50	75	62.5	47	74	60.5	44	75	59.5	45	83	64.0	49	87	68.0	51	91	71.0	51	90	70.5	57	88	72.5	52	82	67.0	50	81	65.5	53	81	67.0	
04/14	47	76	61.5	56	74	65.0	42	75	58.5	46	84	65.0	50	87	68.5	51	90	70.5	52	89	70.5	54	83	68.5	54	84	69.0	52	84	68.0	54	83	68.5	53	79	66.0	
04/15	51	76	63.5	43	75	59.0	45	82	63.5	50	85	67.5	51	90	70.5	53	87	70.0	54	84	69.0	51	82	66.5	56	84	70.0	52	88	70.0	53	85	69.0	52	77	64.5	
04/16	42	75	58.5	46	82	64.0	50	84	67.0	51	89	70.0	53	89	71.0	54	85	69.5	51	83	67.0	50	83	66.5	55	87	71.0	53	91	72.0	50	84	67.0	52	75	63.5	
04/17	44	83	63.5	46	84	65.0	50	89	69.5	54	90	72.0	54	85	69.5	51	83	67.0	50	84	67.0	51	82	66.5	51	79	65.0	49	69	59.0	49	75	62.0	49	76	62.5	
04/18	45	85	65.0	43	89	66.0	55	89	72.0	53	83	68.0	52	83	67.5	52	86	69.0	49	83	66.0	48	76	62.0	52	71	61.5	46	74	60.0	48	72	60.0	54	73	63.5	
04/19	43	91	67.0	50	89	69.5	49	80	64.5	49	84	66.5	47	86	66.5	46	84	65.0	51	74	62.5	48	66	57.0	43	68	55.5	46	74	60.0	50	74	62.0	53	78	65.5	
04/20	48	88	68.0	50	79	64.5	51	84	67.5	47	86	66.5	48	84	66.0	49	72	60.5	49	62	55.5	43	65	54.0	46	72	59.0	48	71	59.5	50	81	65.5	54	82	68.0	
04/21	49	79	64.0	53	83	68.0	47	84	65.5	46	82	64.0	49	67	58.0	46	57	51.5	41	65	53.0	44	67	55.5	48	71	59.5	51	86	68.5	51	82	66.5	53	81	67.0	
04/22	54	84	69.0	48	82	65.0	47	78	62.5	50	64	57.0	45	56	50.5	40	64	52.0	42	71	56.5	45	78	61.5	54	83	68.5	52	83	67.5	49	81	65.0	56	81	68.5	
04/23	46	81	63.5	48	78	63.0	49	66	57.5	44	55	49.5	40	63	51.5	41	74	57.5	45	80	62.5	50	84	67.0	57	88	72.5	55	82	68.5	55	83	69.0	54	85	69.5	
04/24	47	77	62.0	54	69	61.5	50	58	54.0	44	66	55.0	44	76	60.0	48	84	66.0	51	89	70.0	52	89	70.5	52	78	65.0	52	80	66.0	51	82	66.5	50	81	65.5	
04/25	54	69	61.5	53	59	56.0	44	66	55.0	44	78	61.0	48	85	66.5	52	88	70.0	50	88	69.0	52	85	68.5	50	78	64.0	52	89	70.5	55	85	70.0	53	80	66.5	
04/26	42	57	49.5	36	64	50.0	41	78	59.5	47	86	66.5	49	88	68.5	52	88	70.0	53	85	69.0	52	83	67.5	55	83	69.0	53	87	70.0	56	89	72.5	58	88	73.0	
04/27	36	66	51.0	47	78	62.5	46	87	66.5	51	88	69.5	55	87	71.0	53	85	69.0	51	83	67.0	51	87	69.0	57	87	72.0	55	91	73.0	57	92	74.5	57	84	70.5	
04/28	45	79	62.0	38	86	62.0	50	90	70.0	55	87	71.0	56	87	71.5	50	83	66.5	49	87	68.0	52	88	70.0	55	90	72.5	56	94	75.0	56	89	72.5	56	81	68.5	
04/29	43	88	65.5	51	89	70.0	54	88	71.0	54	86	70.0	52	82	67.0	51	86	68.5	51	88	69.5	52	90	71.0	57	90	73.5	54	89	71.5	54	87	70.5	54	85	69.5	
04/30	50	89	69.5	54	88	71.0	56	85	70.5	52	83	67.5	52	87	69.5	55	88	71.5	52	92	72.0	55	89	72.0	53	82	67.5	51	83	67.0	52	84	68.0	53	84	68.5	
-																																					

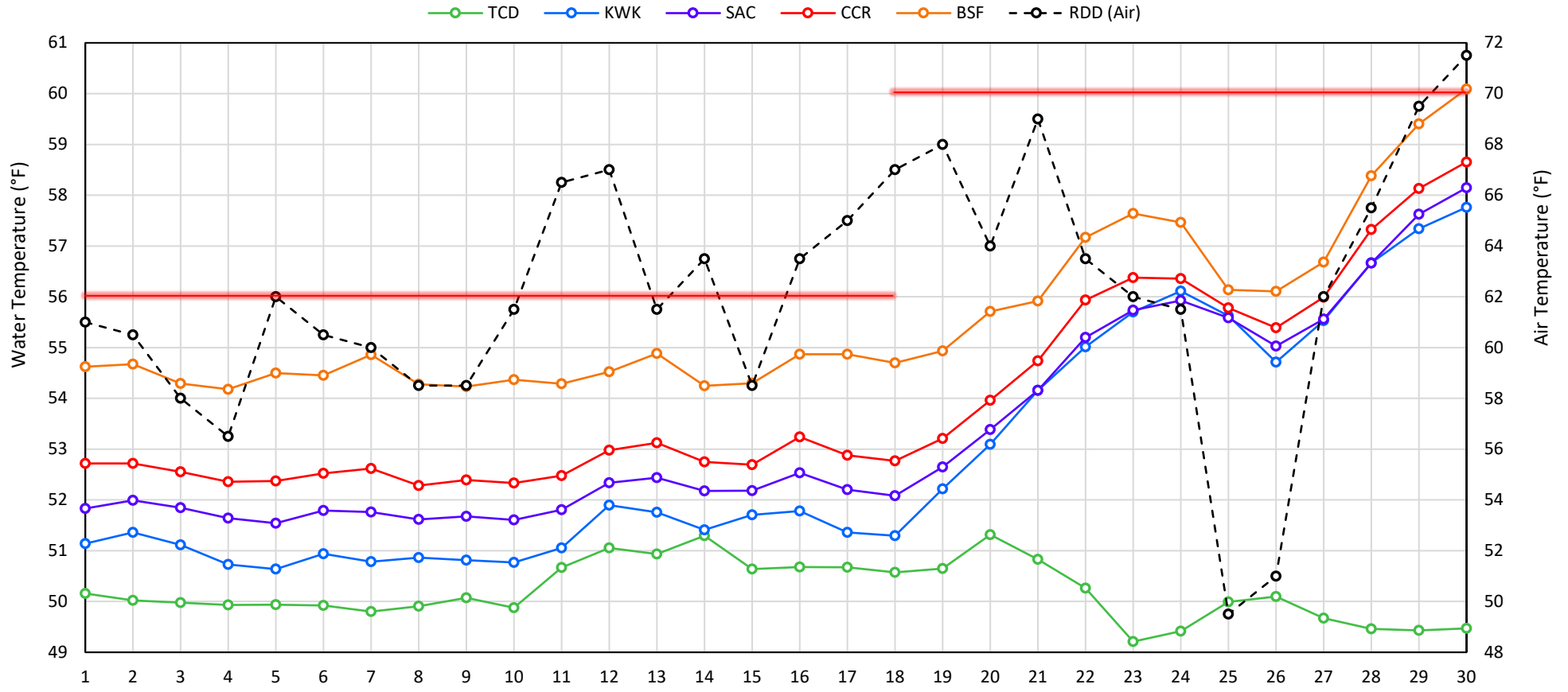
Web Links

- [10-Day Min/Max Forecast](#)
- [Previous Days Min/Max Actuals](#)

Legend

- NR = Forecasted temperatures not recorded
- 100** = Previous day actual temperatures in red and bolded indicate a record temperature for that date

Mean Daily Temperatures



Station Details			
Code	Body of Water	Location ¹	CDEC Link
TCD	N/A	Shasta Power Plant	N/A
SHD	Sacramento River	0.3 miles downstream of Shasta Power Plant	Click Here
SPP	N/A	Spring Creek Power Plant	N/A
KWK	Sacramento River	0.8 miles downstream of Keswick Dam	Click Here
SAC	Sacramento River	4.8 miles downstream of Keswick Dam	Click Here
CCR	Sacramento River	9.7 miles downstream of Keswick Dam	Click Here
BSF	Sacramento River	25 miles downstream of Keswick Dam	Click Here
JLF	Sacramento River	34 miles downstream of Keswick Dam	Click Here
BND	Sacramento River	41 miles downstream of Keswick Dam	Click Here
RDB	Sacramento River	58 miles downstream of Keswick Dam	Click Here
IGO	Clear Creek	7.3 miles downstream of Whiskeytown Dam	Click Here
LWS	Trinity River	1.1 miles downstream of Lewiston Dam	Click Here
DGC	Trinity River	19 miles downstream of Lewiston Dam	Click Here
NFH	Trinity River	38 miles downstream of Lewiston Dam	Click Here

Water Right Temperature Control Points				
River	Point	Temp. (°F)	Begin Date	End Date
Sacramento	CCR	56	09/21/2020	04/18/2021
Sacramento	CCR	60	04/18/2021	TBD
Trinity	DGC	56	09/15/2021	10/01/2021
Trinity	NFH	56	10/01/2021	12/31/2021

Notes

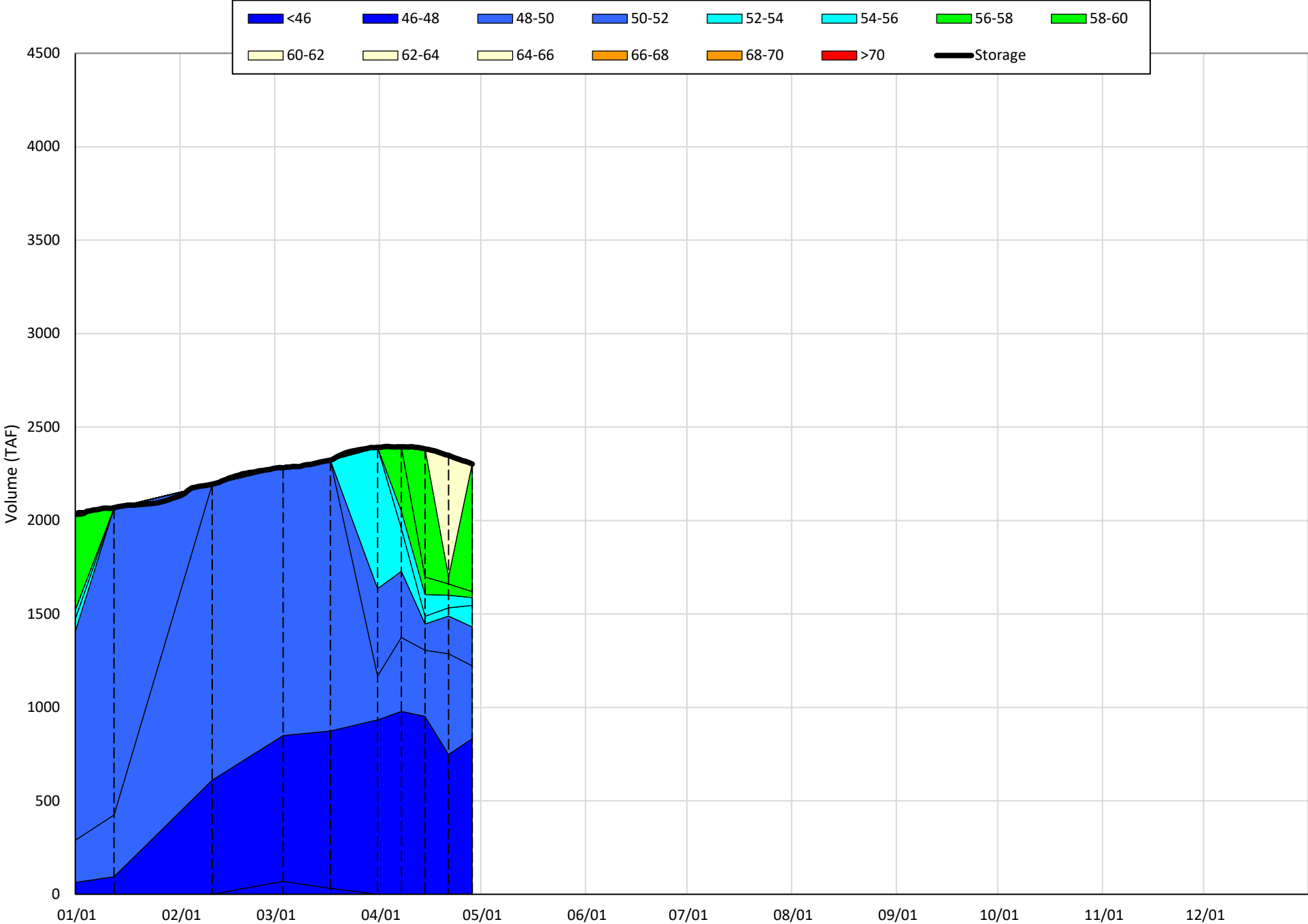
¹ Distances are approximate

Shasta Lake Isothermobaths & Cold Water Pool Statistics

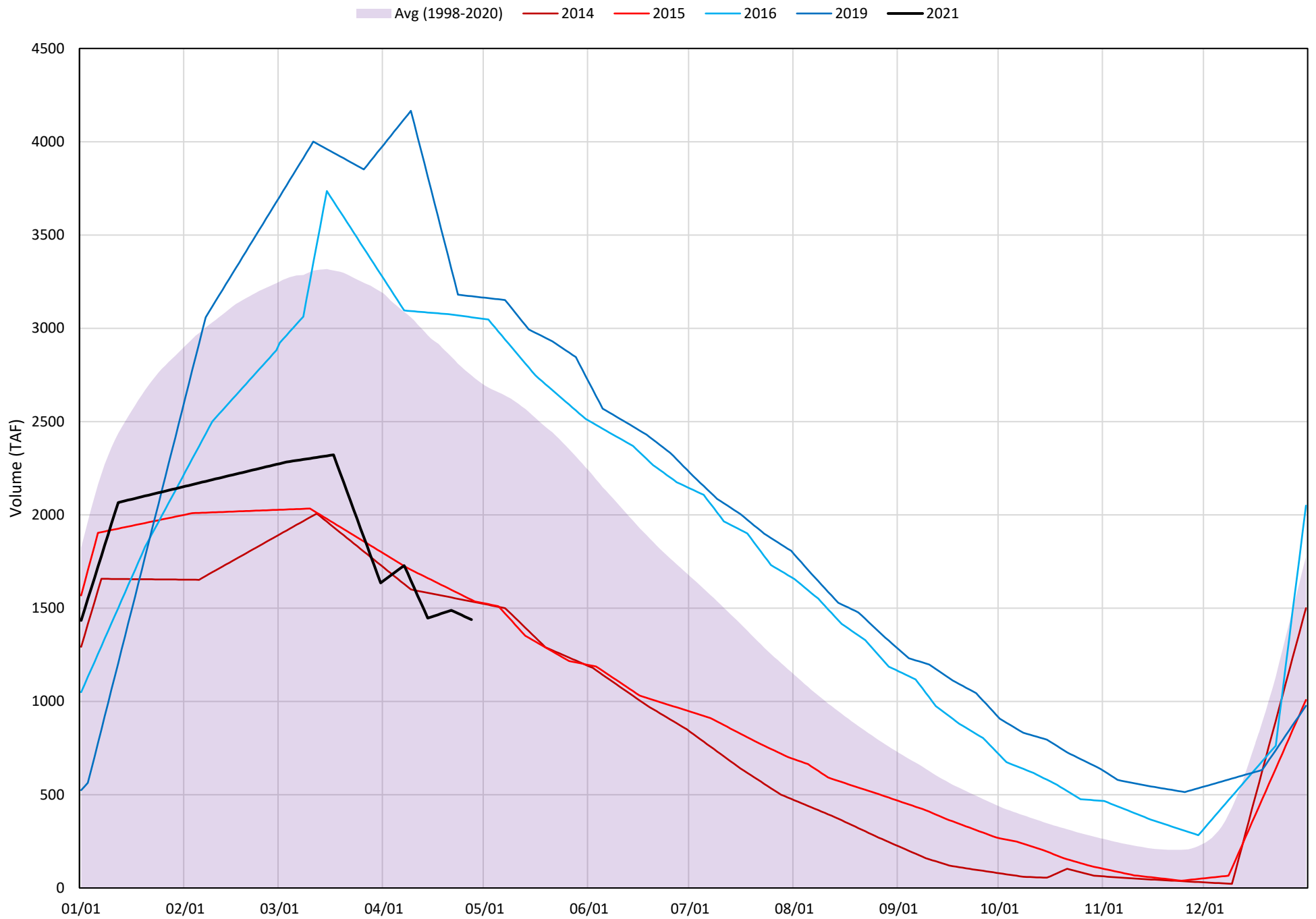
2021

Page	Description
6	- Shasta Lake Isothermobaths Plot
7	- Shasta Lake Cold Water Pool Volume $\leq 52^{\circ}\text{F}$
8	- Shasta Lake Cold Water Pool Volume $\leq 50^{\circ}\text{F}$
9	- Shasta Lake Cold Water Pool Volume $\leq 48^{\circ}\text{F}$
10	- Shasta Lake Cold Water Pool Volume $\leq 52^{\circ}\text{F}$ - Percent Exceedances
11	- Shasta Lake Cold Water Pool Volume $\leq 50^{\circ}\text{F}$ - Percent Exceedances
12	- Shasta Lake Cold Water Pool Volume $\leq 48^{\circ}\text{F}$ - Percent Exceedances
13	- Shasta Lake Cold Water Pool Comparison by Year

Shasta Lake Isothermobaths Plot - 2021

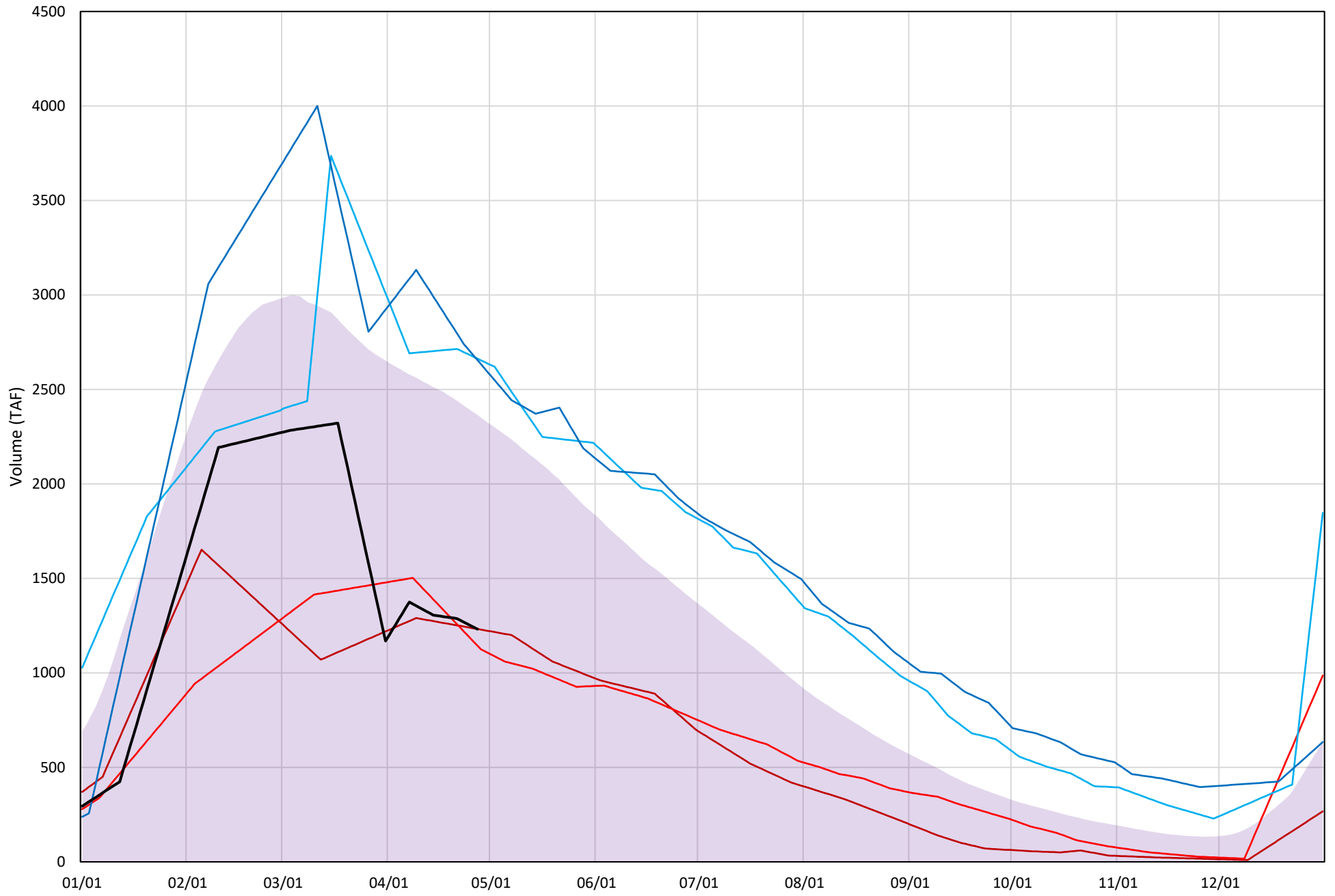


Shasta Lake Cold Water Pool Volume $\leq 52^{\circ}\text{F}$

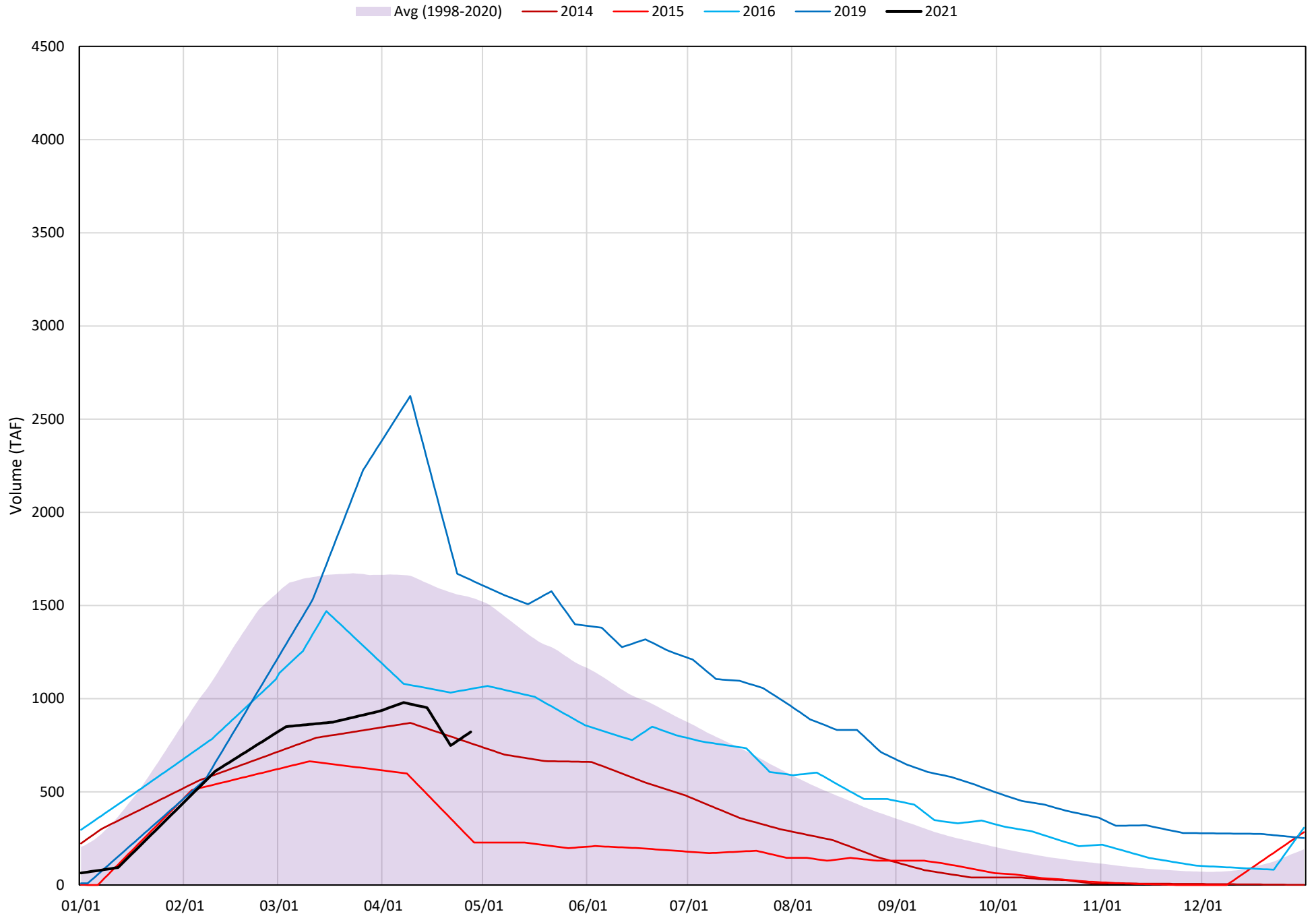


Shasta Lake Cold Water Pool Volume $\leq 50^{\circ}\text{F}$

Avg (1998-2020) 2014 2015 2016 2019 2021

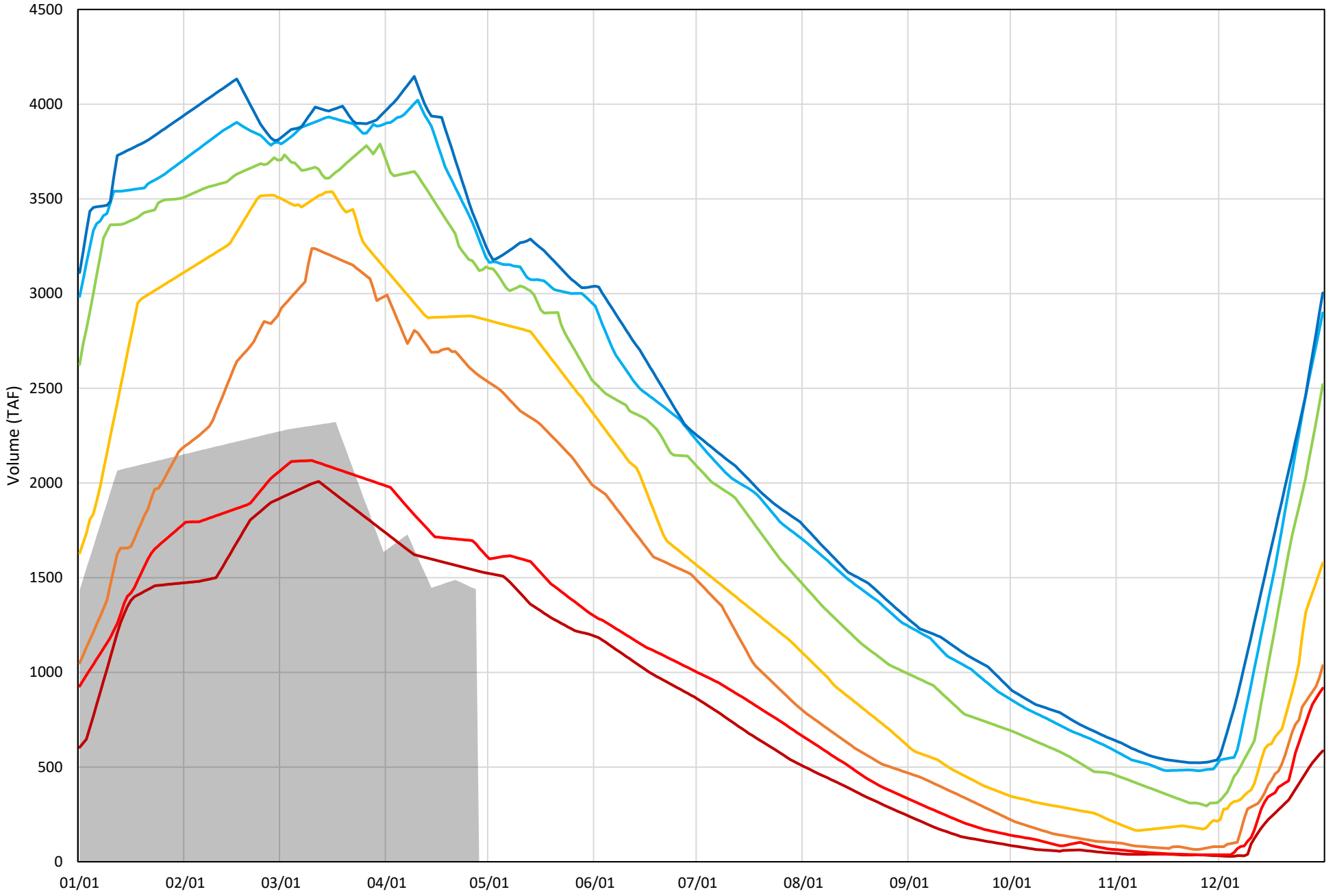


Shasta Lake Cold Water Pool Volume $\leq 48^{\circ}\text{F}$



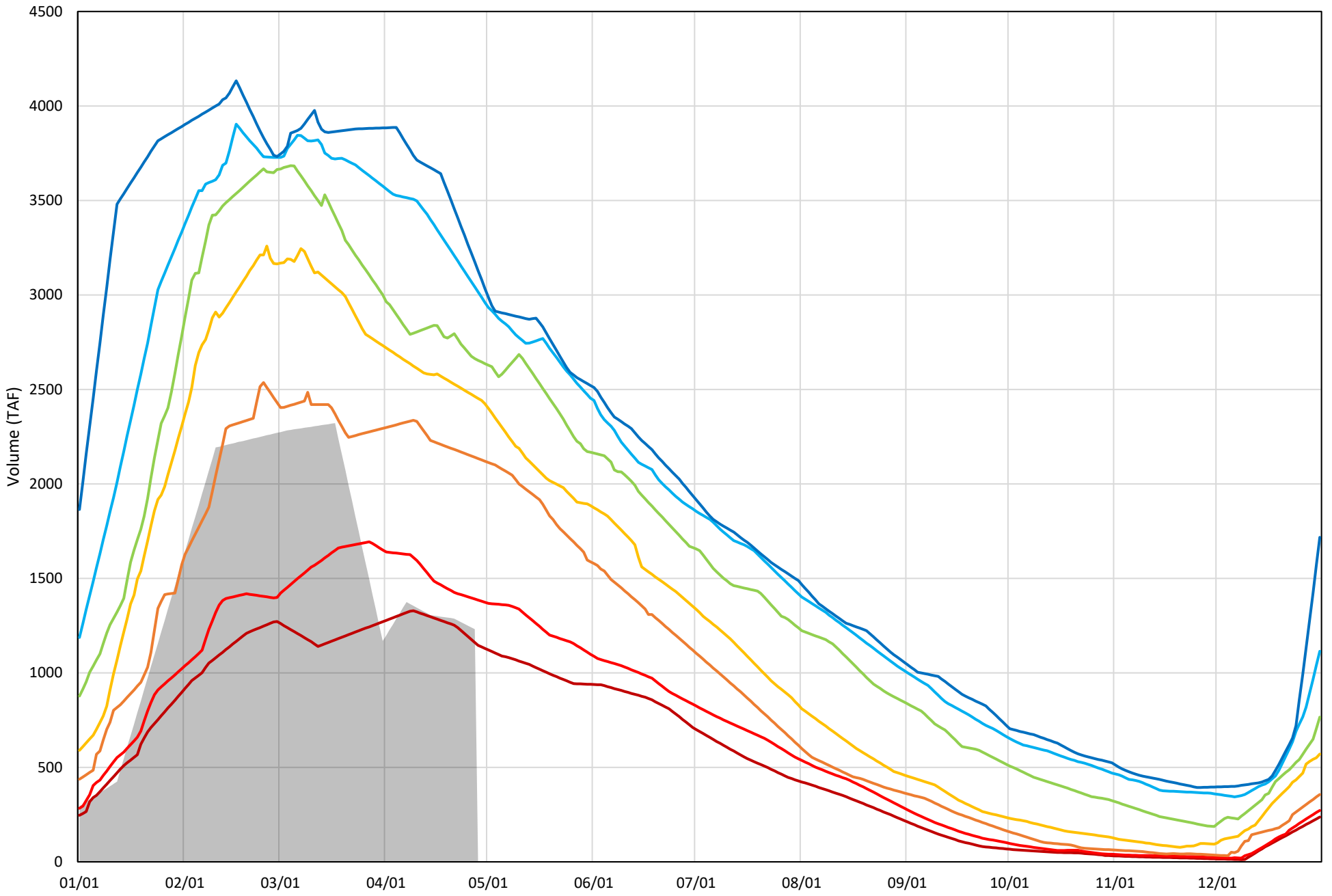
Shasta Lake Cold Water Pool Volume $\leq 52^{\circ}\text{F}$ - Percent Exceedances (1998-2020)

2021 95 90 75 50 25 10 5



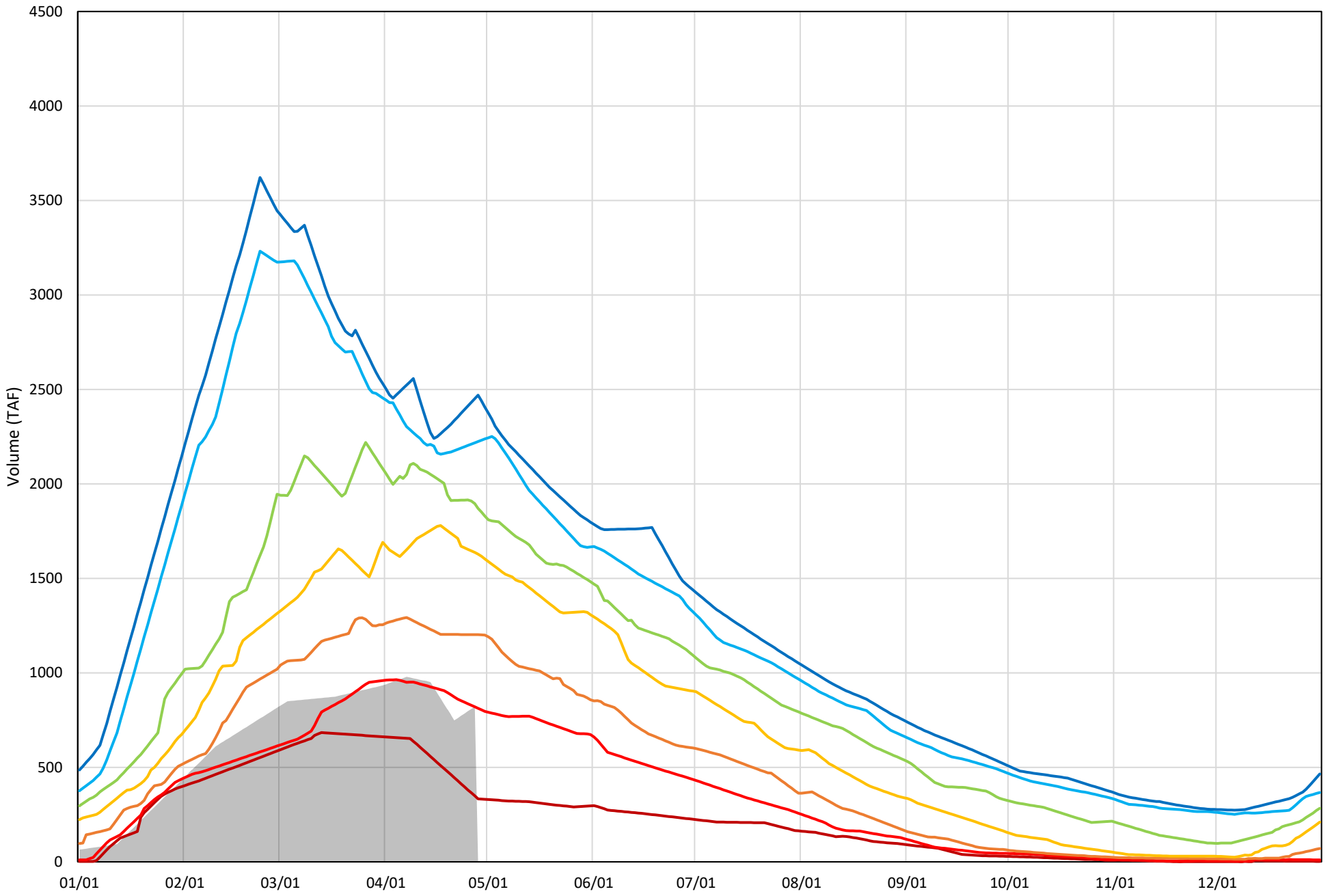
Shasta Lake Cold Water Pool Volume $\leq 50^{\circ}\text{F}$ - Percent Exceedances (1998-2020)

2021 95 90 75 50 25 10 5



Shasta Lake Cold Water Pool Volume $\leq 48^{\circ}\text{F}$ - Percent Exceedances (1998-2020)

2021 95 90 75 50 25 10 5



Shasta Lake Cold Water Pool Comparison by Year (for Specified Date)

Apr-28 2021	Δ TAF				% Δ			
	≤52°	≤50°	≤48°	Abs. Avg.	≤52°	≤50°	≤48°	Abs. Avg.
1998	1694	1692	1678	1688	118	137	204	153
1999	1836	1740	1335	1637	128	141	163	144
2000	1306	910	427	881	91	74	52	72
2001	1192	1166	1069	1142	83	95	130	103
2002	1437	1339	1025	1267	100	109	125	111
2003	1444	1056	407	969	100	86	50	79
2004	1139	1066	762	989	79	87	93	86
2005	1258	1101	327	896	87	89	40	72
2006	1928	1964	995	1629	134	160	121	138
2007	1232	1232	973	1146	86	100	118	101
2008	442	397	599	479	31	32	73	45
2009	479	466	622	522	33	38	76	49
2010	1709	1346	1095	1383	119	109	133	120
2011	1833	1860	1436	1710	127	151	175	151
2012	1950	1632	1074	1552	136	132	131	133
2013	1140	1076	822	1013	79	87	100	89
2014	97	1	-61	53	7	0	-7	5
2015	106	-88	-575	256	7	-7	-70	28
2016	1620	1431	231	1094	113	116	28	86
2017	1679	1269	1076	1341	117	103	131	117
2018	1541	1293	381	1072	107	105	46	86
2019	1733	1423	816	1324	120	116	99	112
2020	1299	689	88	692	90	56	11	52
2021	0	0	0	0	0	0	0	0

Historic - Current

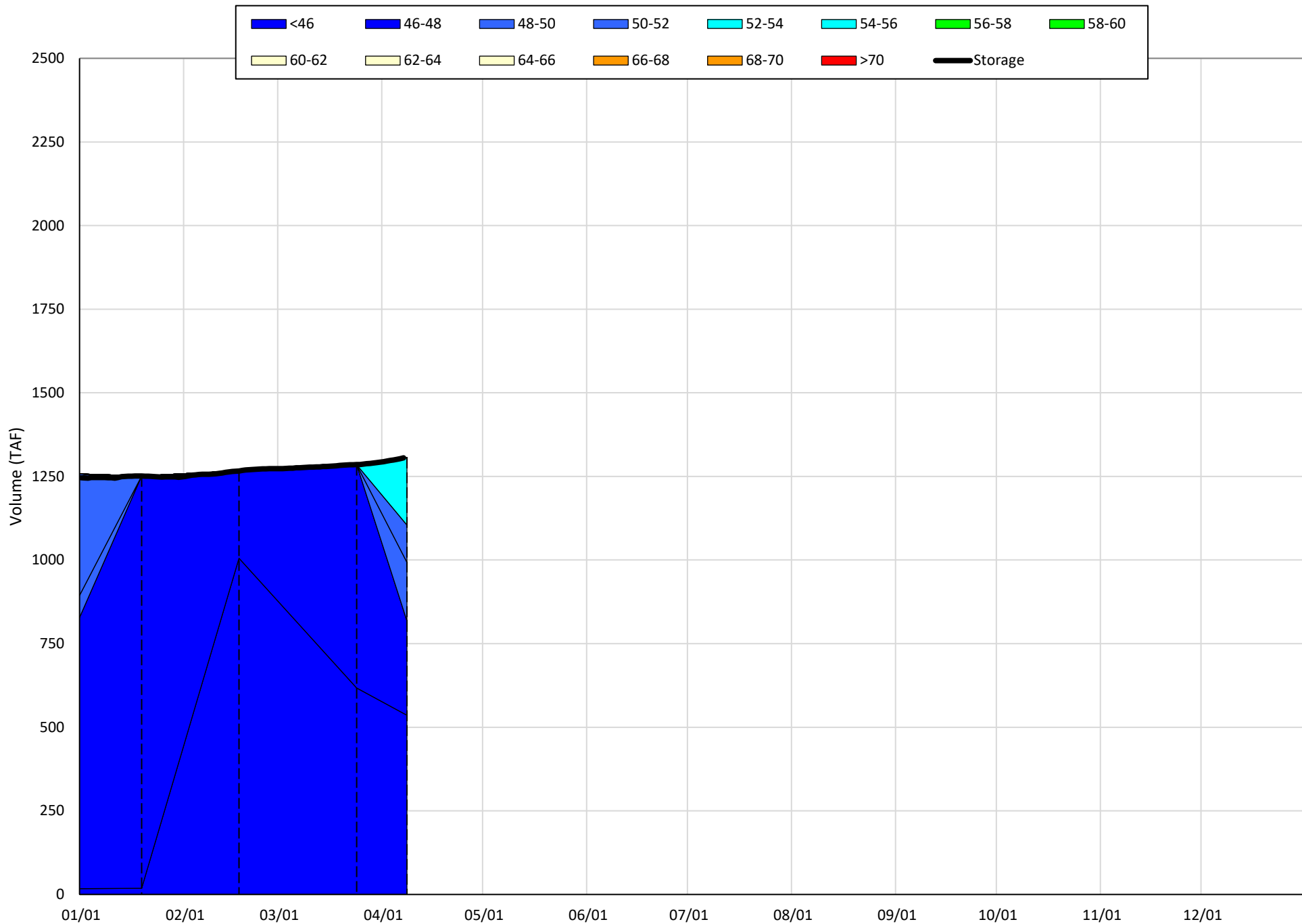
(Historic - Current) / Current

Trinity Lake Isothermobaths & Cold Water Pool Statistics

2021

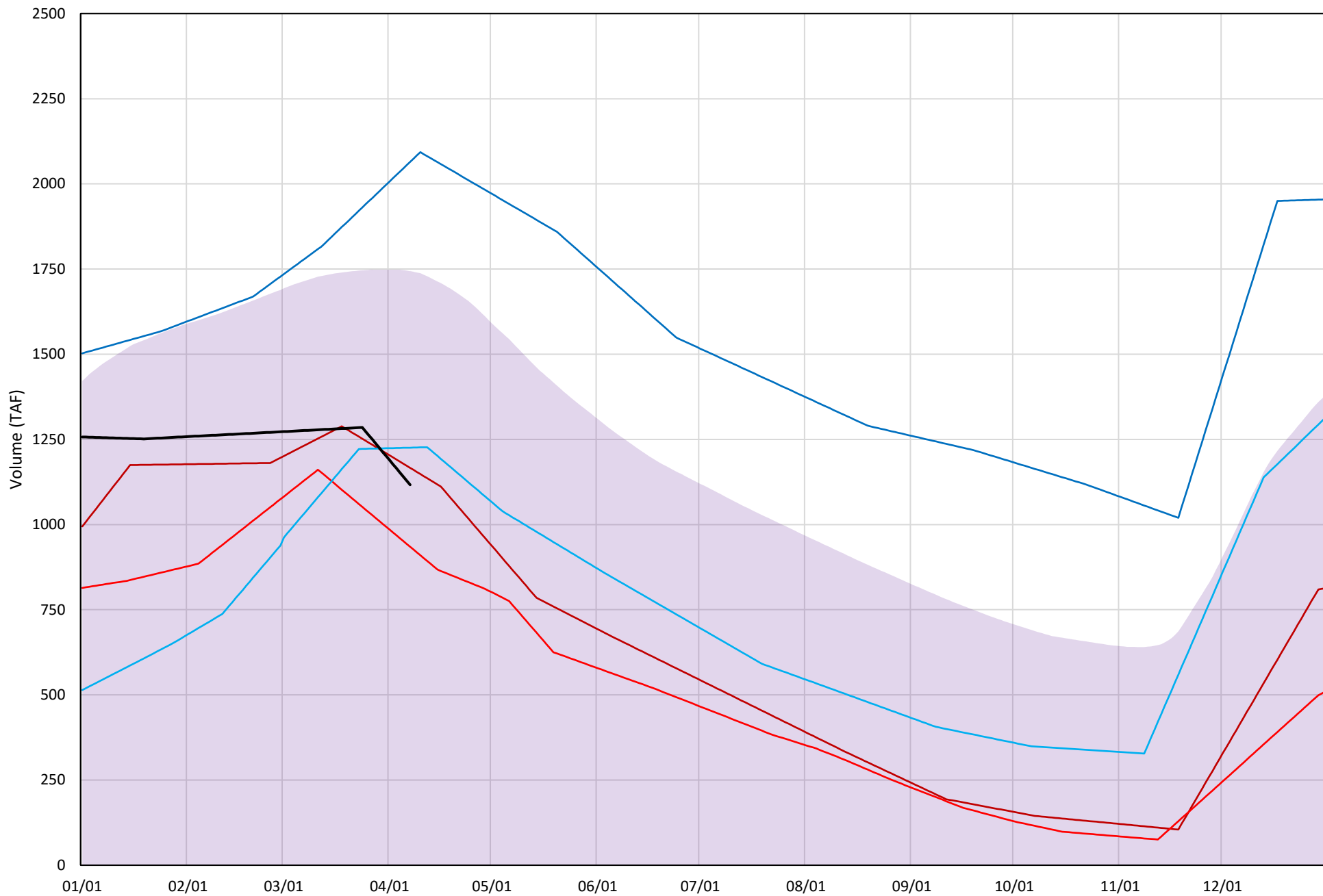
Page	Description
15	- Trinity Lake Isothermobaths Plot
16	- Trinity Lake Cold Water Pool Volume $\leq 52^{\circ}\text{F}$
17	- Trinity Lake Cold Water Pool Volume $\leq 50^{\circ}\text{F}$
18	- Trinity Lake Cold Water Pool Volume $\leq 48^{\circ}\text{F}$
19	- Trinity Lake Cold Water Pool Volume $\leq 52^{\circ}\text{F}$ - Percent Exceedances
20	- Trinity Lake Cold Water Pool Volume $\leq 50^{\circ}\text{F}$ - Percent Exceedances
21	- Trinity Lake Cold Water Pool Volume $\leq 48^{\circ}\text{F}$ - Percent Exceedances
22	- Trinity Lake Cold Water Pool Comparison by Year

Trinity Lake Isothermobaths Plot - 2021



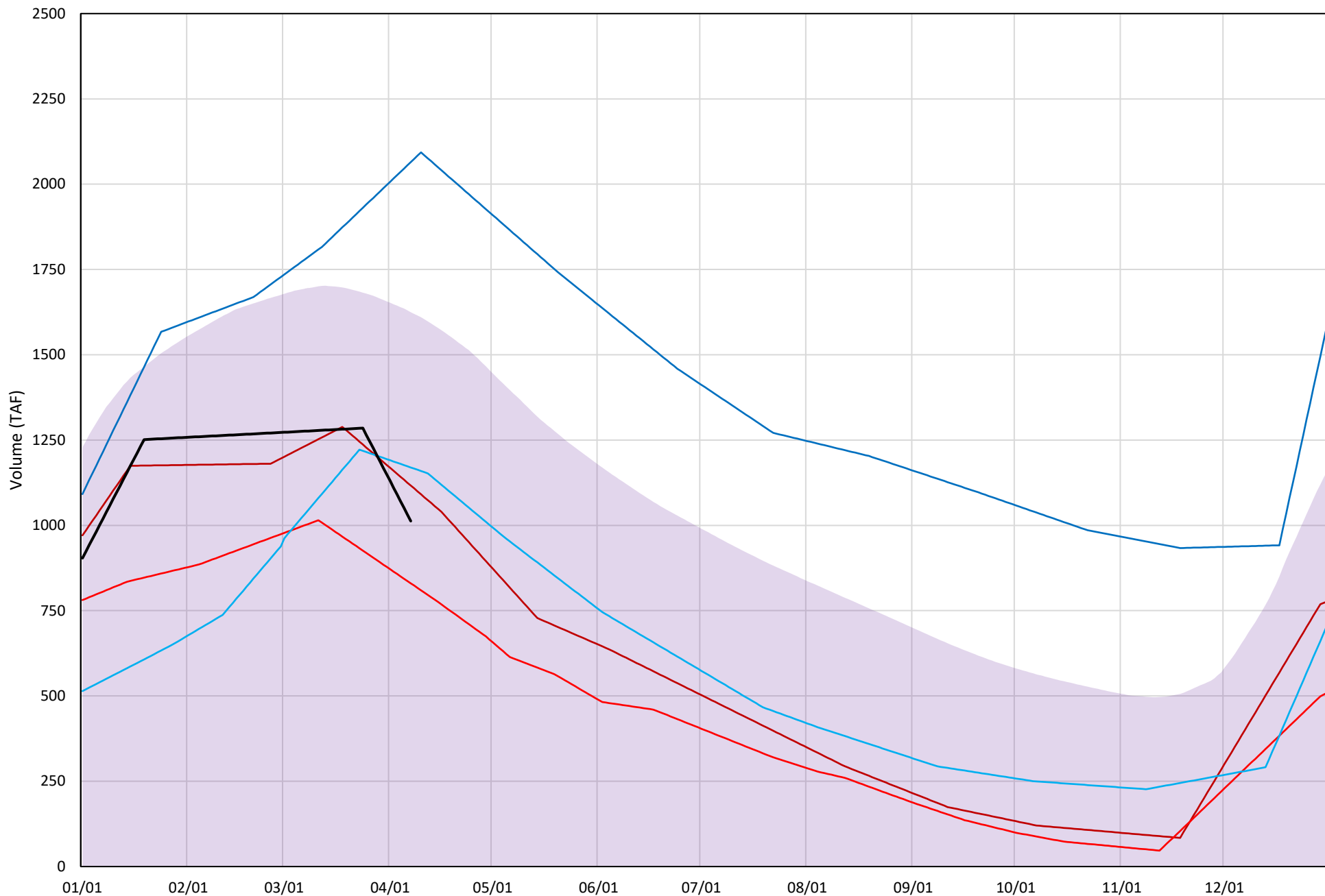
Trinity Lake Cold Water Pool Volume $\leq 52^{\circ}\text{F}$

Avg (2000-2020) 2014 2015 2016 2019 2021



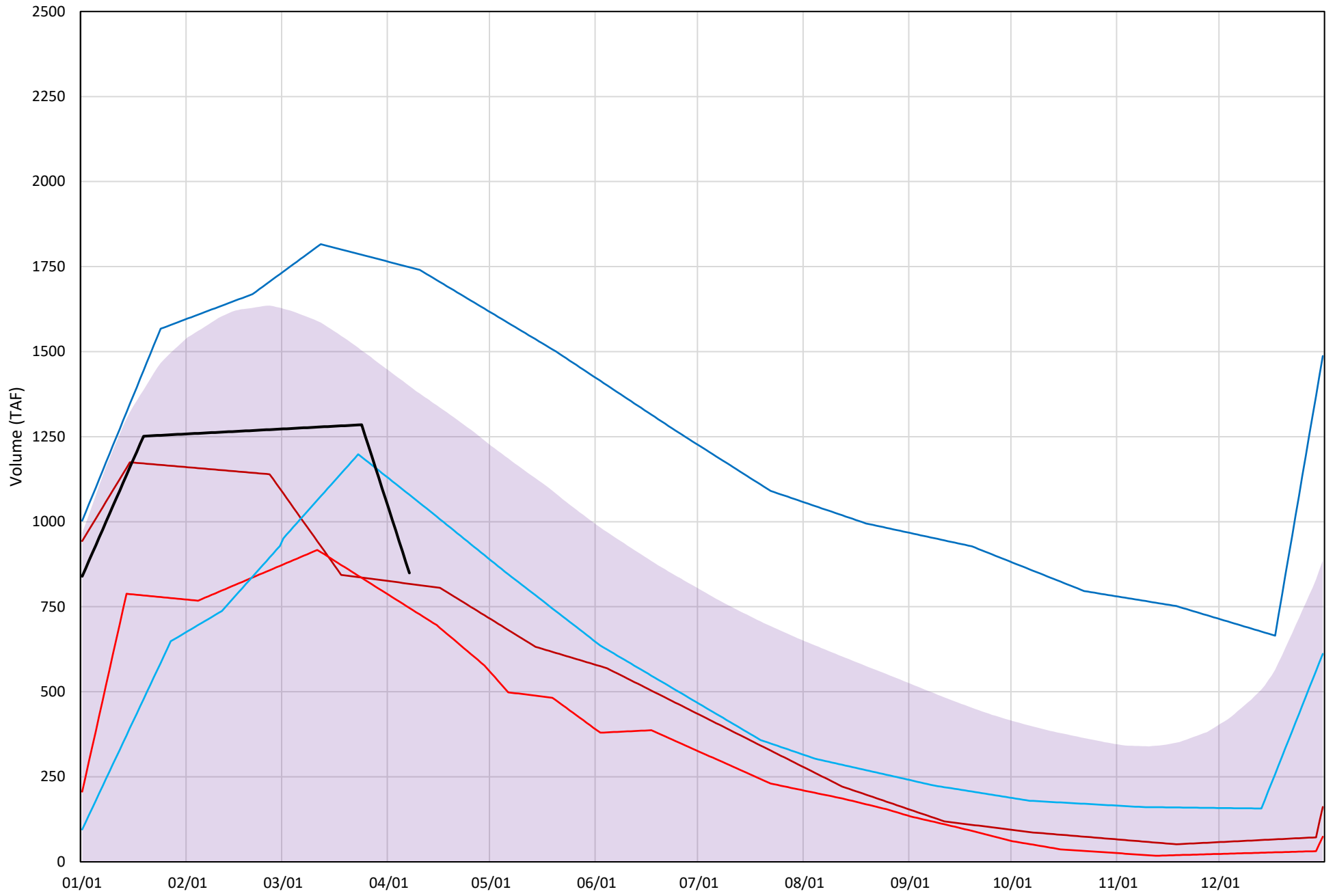
Trinity Lake Cold Water Pool Volume ≤50°F

Avg (2000-2020) 2014 2015 2016 2019 2021



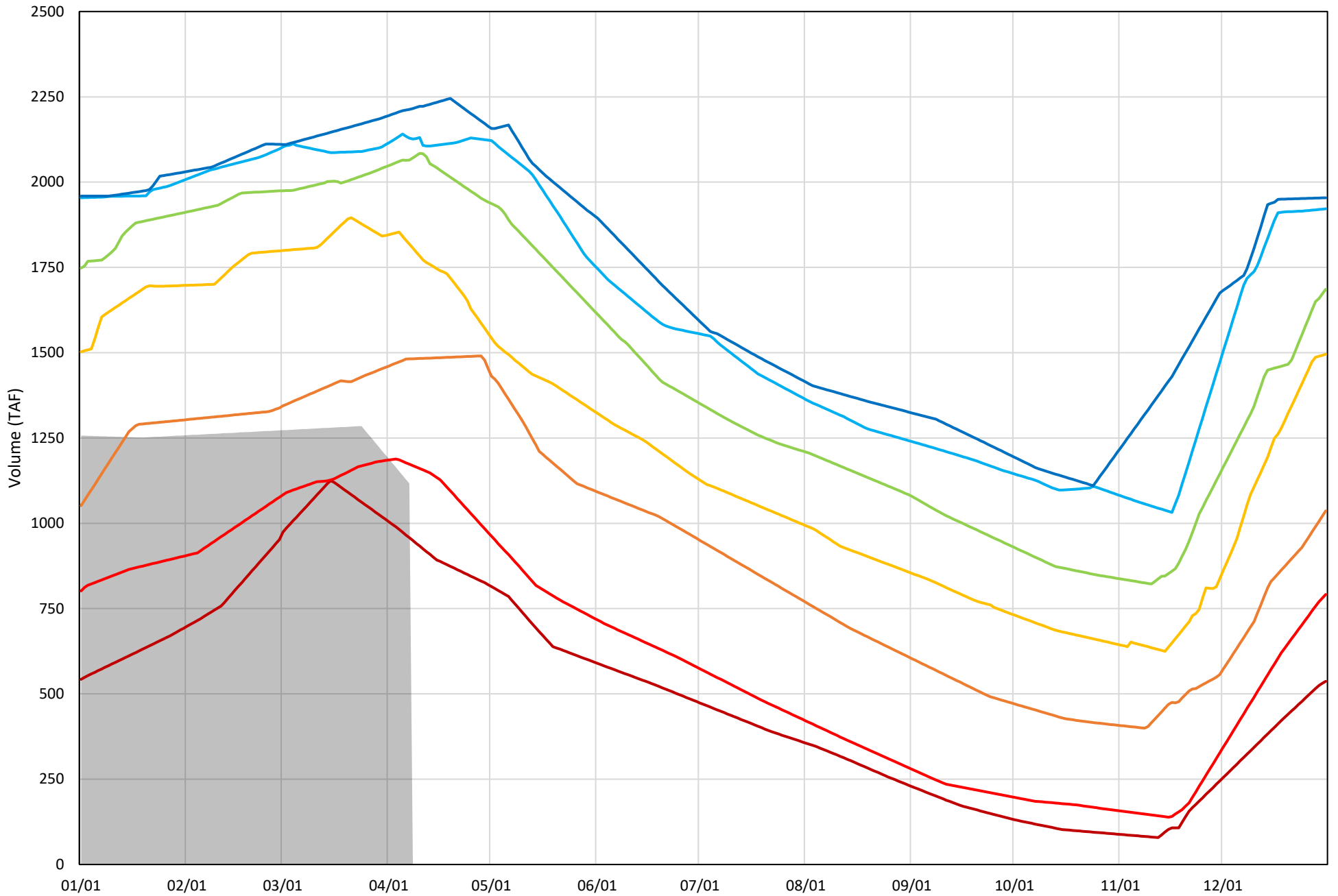
Trinity Lake Cold Water Pool Volume $\leq 48^{\circ}\text{F}$

Avg (2000-2020) 2014 2015 2016 2019 2021

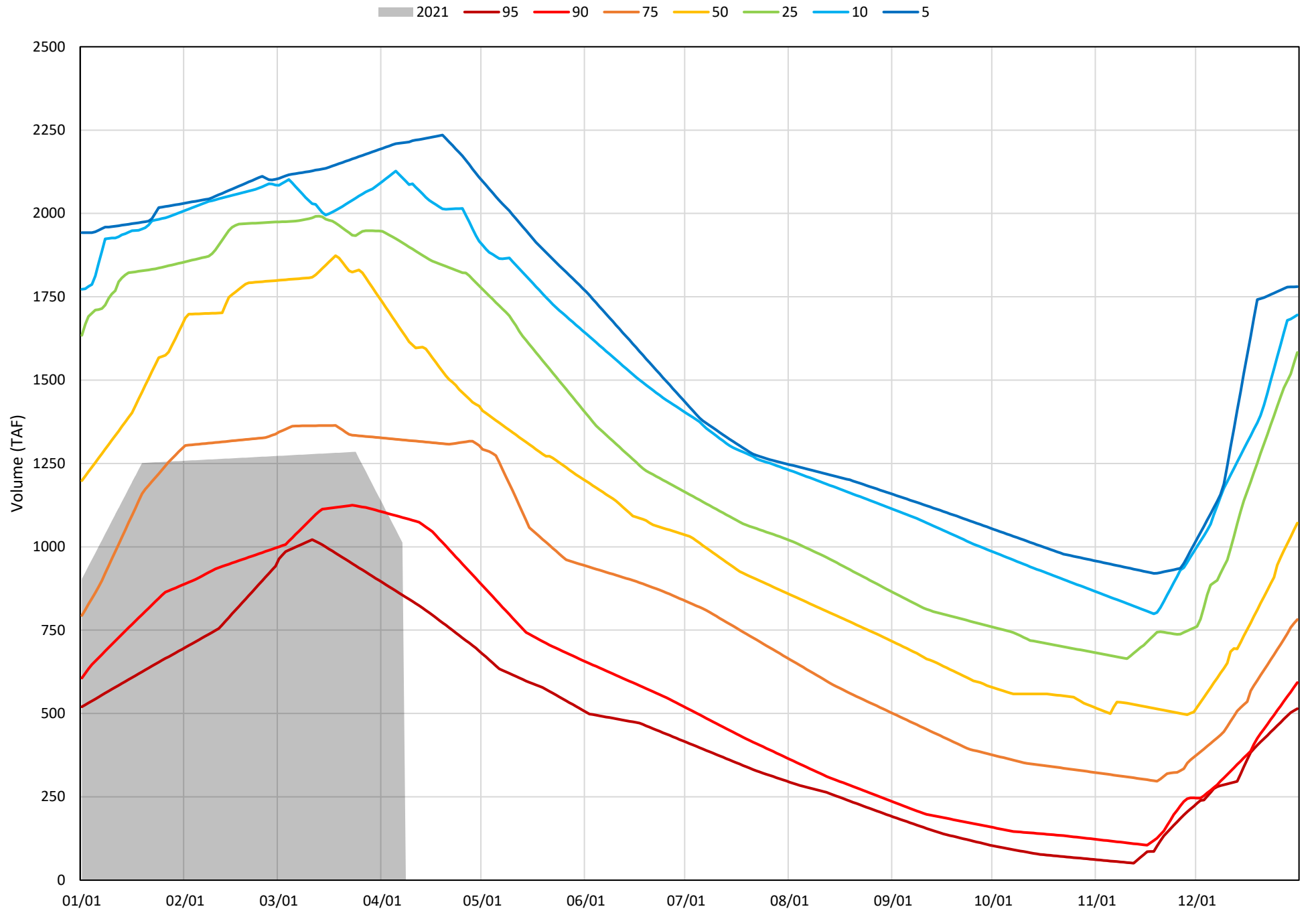


Trinity Lake Cold Water Pool Volume ≤52°F - Percent Exceedances (2000-2020)

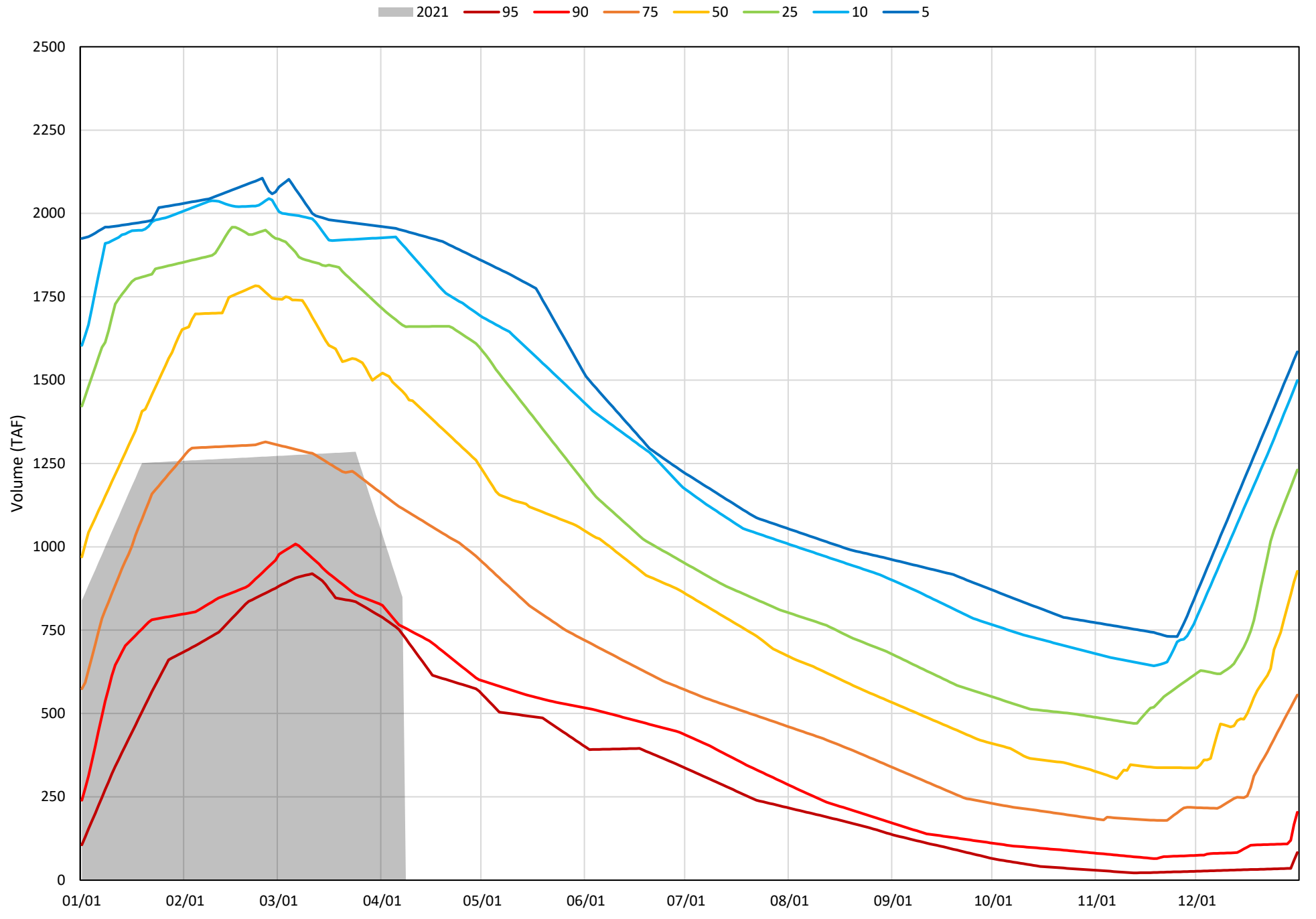
2021 95 90 75 50 25 10 5



Trinity Lake Cold Water Pool Volume ≤50°F - Percent Exceedances (2000-2020)



Trinity Lake Cold Water Pool Volume $\leq 48^{\circ}\text{F}$ - Percent Exceedances (2000-2020)



Trinity Cold Water Pool Comparison by Year (for Specified Date)

Apr-08 2021	Δ TAF				% Δ			
	≤52°	≤50°	≤48°	Abs. Avg.	≤52°	≤50°	≤48°	Abs. Avg.
2000	990	964	717	890	89	95	84	89
2001	483	522	550	518	43	52	65	53
2002	625	676	733	678	56	67	86	70
2003	947	899	585	811	85	89	69	81
2004	717	691	718	709	64	68	85	72
2005	616	330	297	414	55	33	35	41
2006	1106	1210	1102	1139	99	119	130	116
2007	677	610	641	643	61	60	75	65
2008	490	578	486	518	44	57	57	53
2009	84	68	-112	88	8	7	-13	9
2010	247	287	234	256	22	28	28	26
2011	1014	1104	1079	1066	91	109	127	109
2012	842	858	969	890	75	85	114	91
2013	1006	788	620	805	90	78	73	80
2014	50	104	-32	62	4	10	-4	6
2015	-182	-183	-103	156	-16	-18	-12	15
2016	109	157	230	165	10	15	27	17
2017	946	899	905	917	85	89	107	93
2018	702	612	617	644	63	60	73	65
2019	948	1052	899	966	85	104	106	98
2020	744	632	407	594	67	62	48	59
2021	0	0	0	0	0	0	0	0

Historic - Current

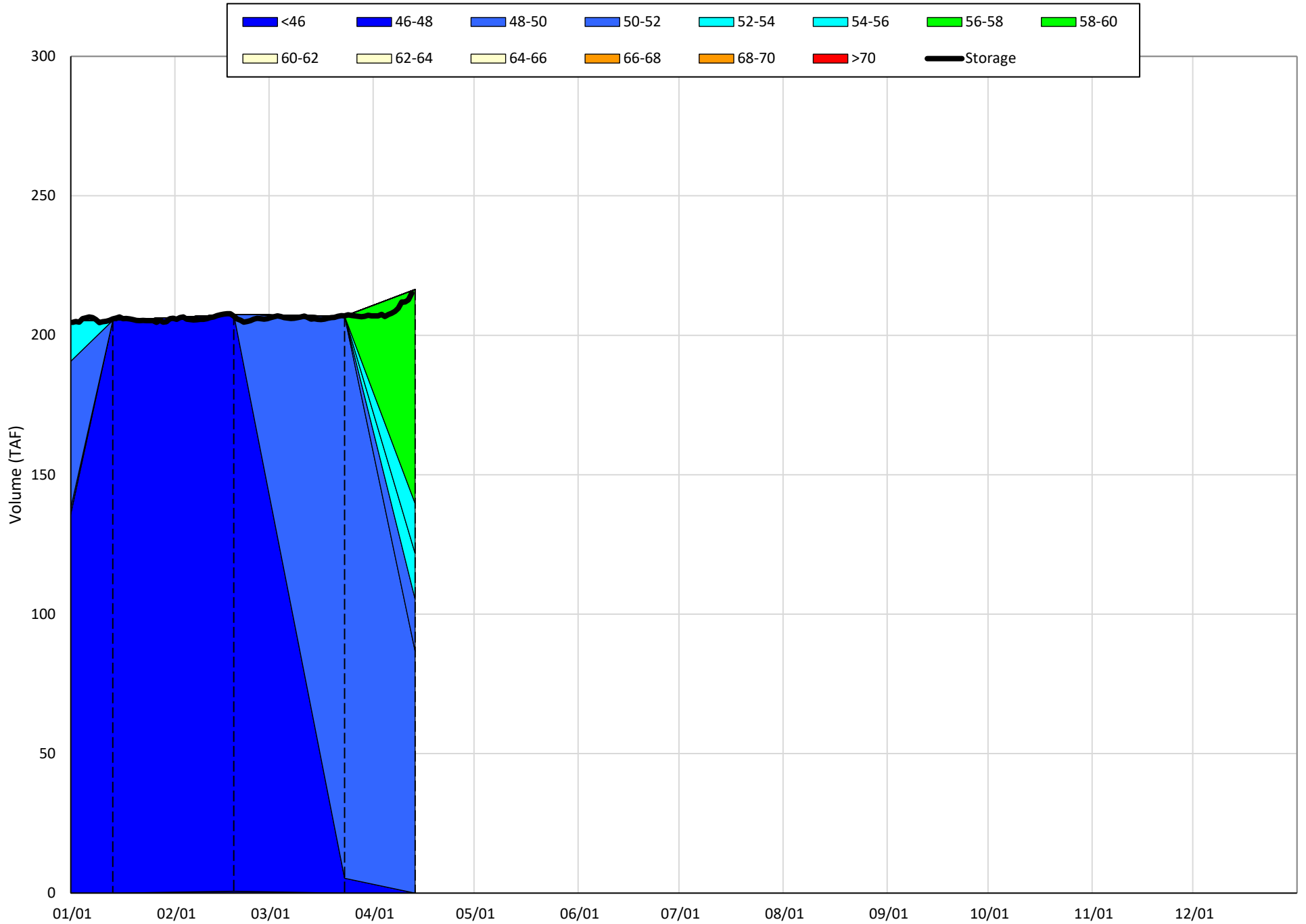
(Historic - Current) / Current

Whiskeytown Lake Isothermobaths & Cold Water Pool Statistics

2021

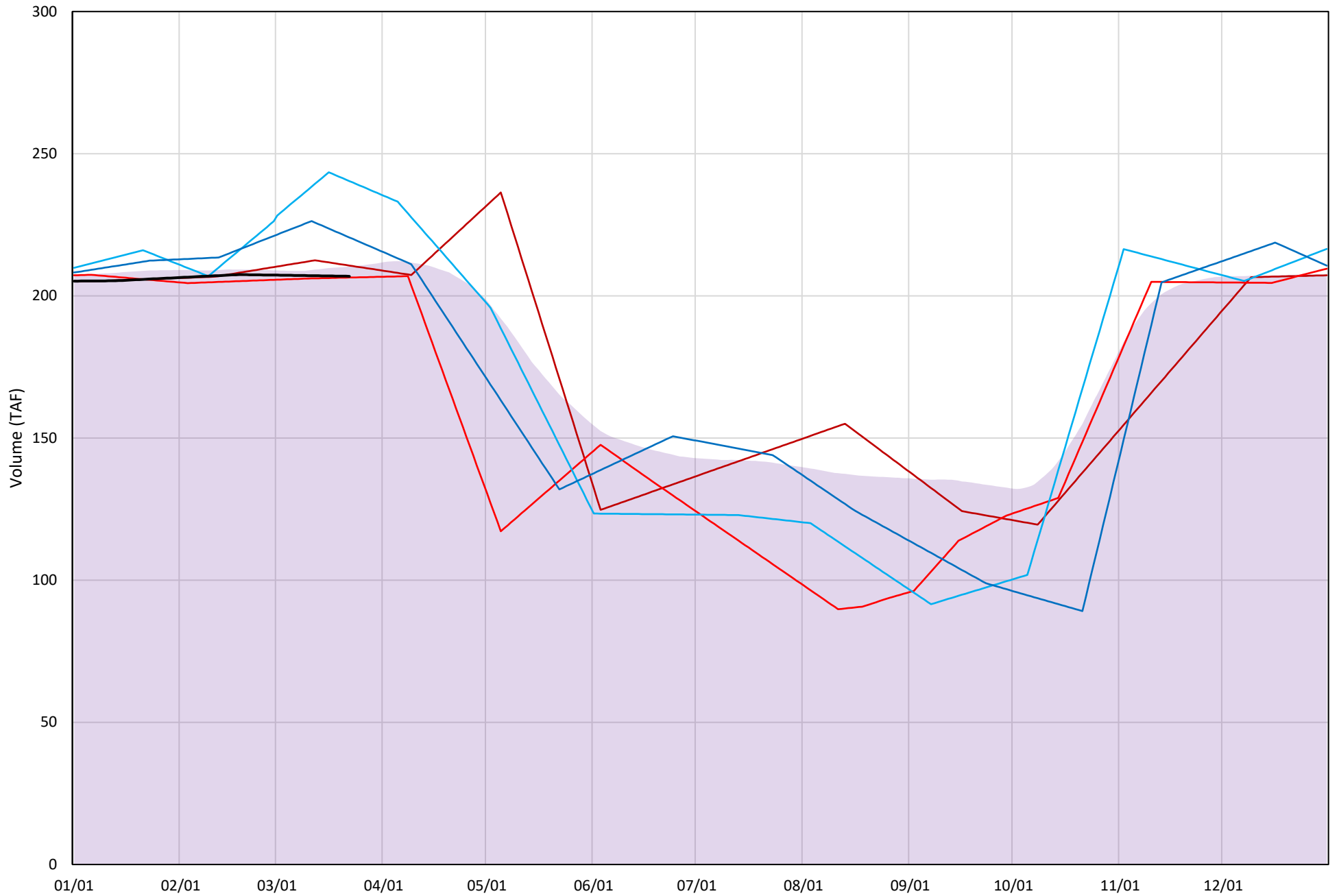
Page	Description
24	- Whiskeytown Lake Isothermobaths Plot
25	- Whiskeytown Lake Cold Water Pool Volume $\leq 60^{\circ}\text{F}$
26	- Whiskeytown Lake Cold Water Pool Volume $\leq 58^{\circ}\text{F}$
27	- Whiskeytown Lake Cold Water Pool Volume $\leq 56^{\circ}\text{F}$
28	- Whiskeytown Lake Cold Water Pool Volume $\leq 60^{\circ}\text{F}$ - Percent Exceedances
29	- Whiskeytown Lake Cold Water Pool Volume $\leq 58^{\circ}\text{F}$ - Percent Exceedances
30	- Whiskeytown Lake Cold Water Pool Volume $\leq 56^{\circ}\text{F}$ - Percent Exceedances
31	- Whiskeytown Lake Cold Water Pool Comparison by Year

Whiskeytown Lake Isothermobaths Plot - 2021



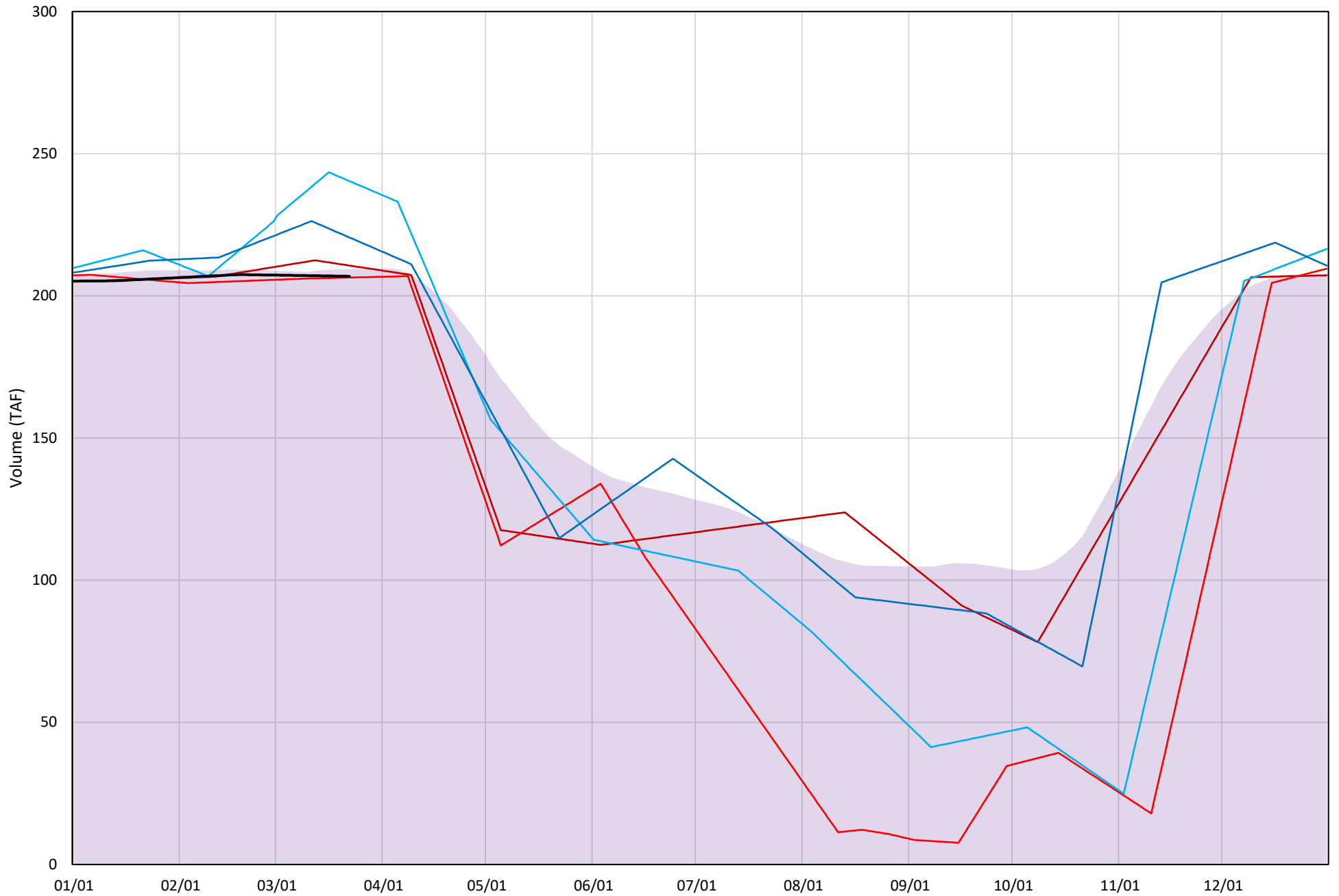
Whiskeytown Lake Cold Water Pool Volume $\leq 60^{\circ}\text{F}$

Avg (2000-2020) 2014 2015 2016 2019 2021



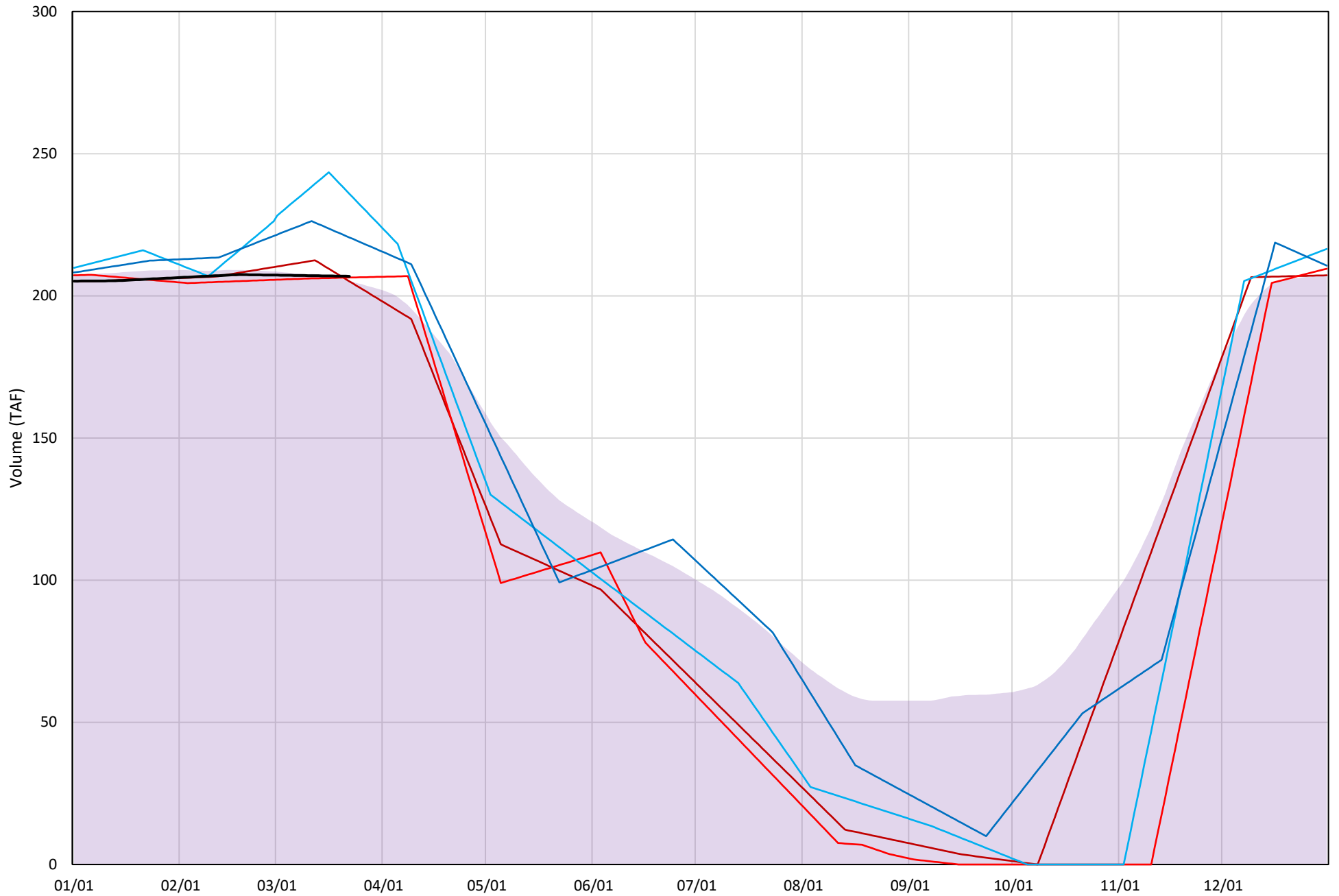
Whiskeytown Lake Cold Water Pool Volume $\leq 58^{\circ}\text{F}$

Avg (2000-2020) 2014 2015 2016 2019 2021



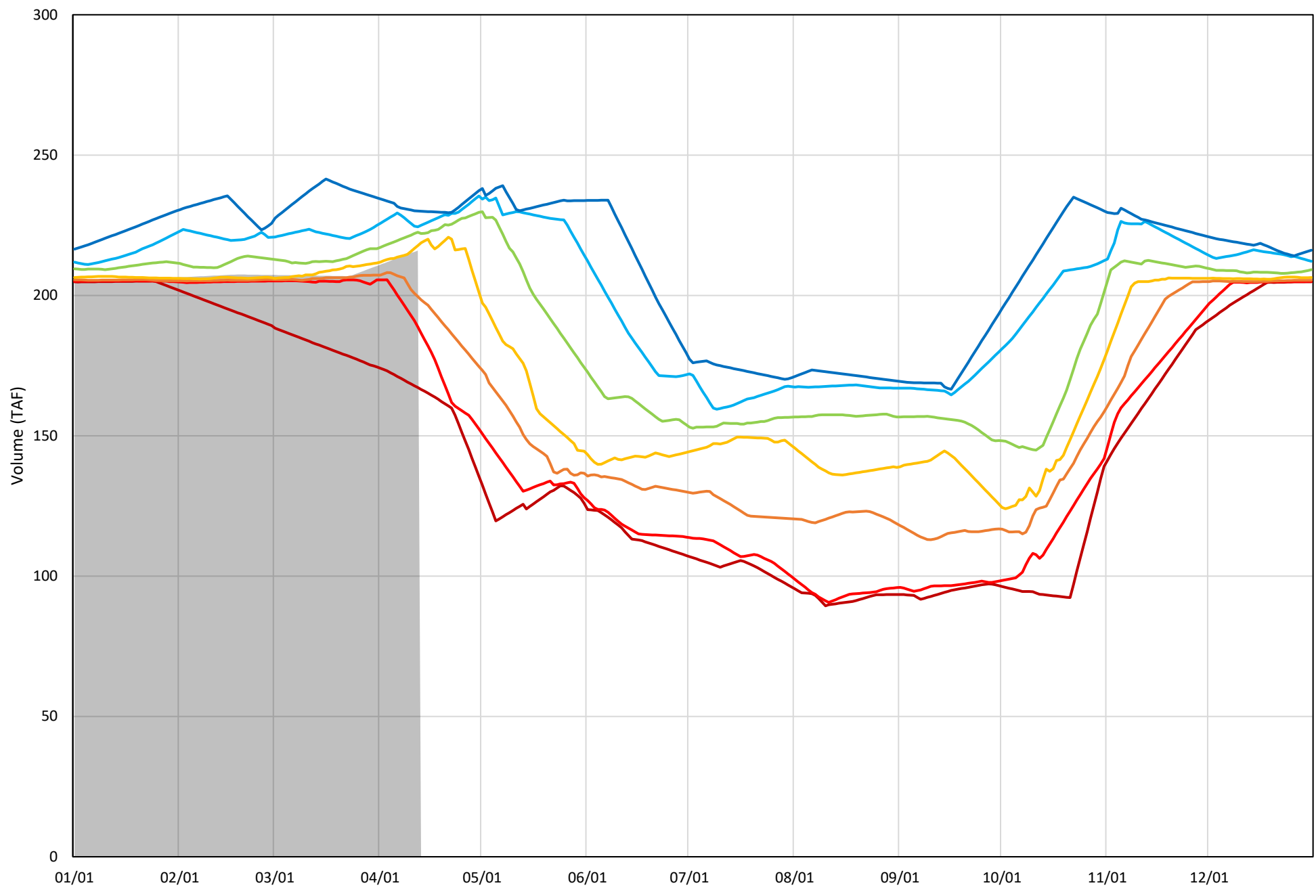
Whiskeytown Lake Cold Water Pool Volume $\leq 56^{\circ}\text{F}$

Avg (2000-2020) 2014 2015 2016 2019 2021



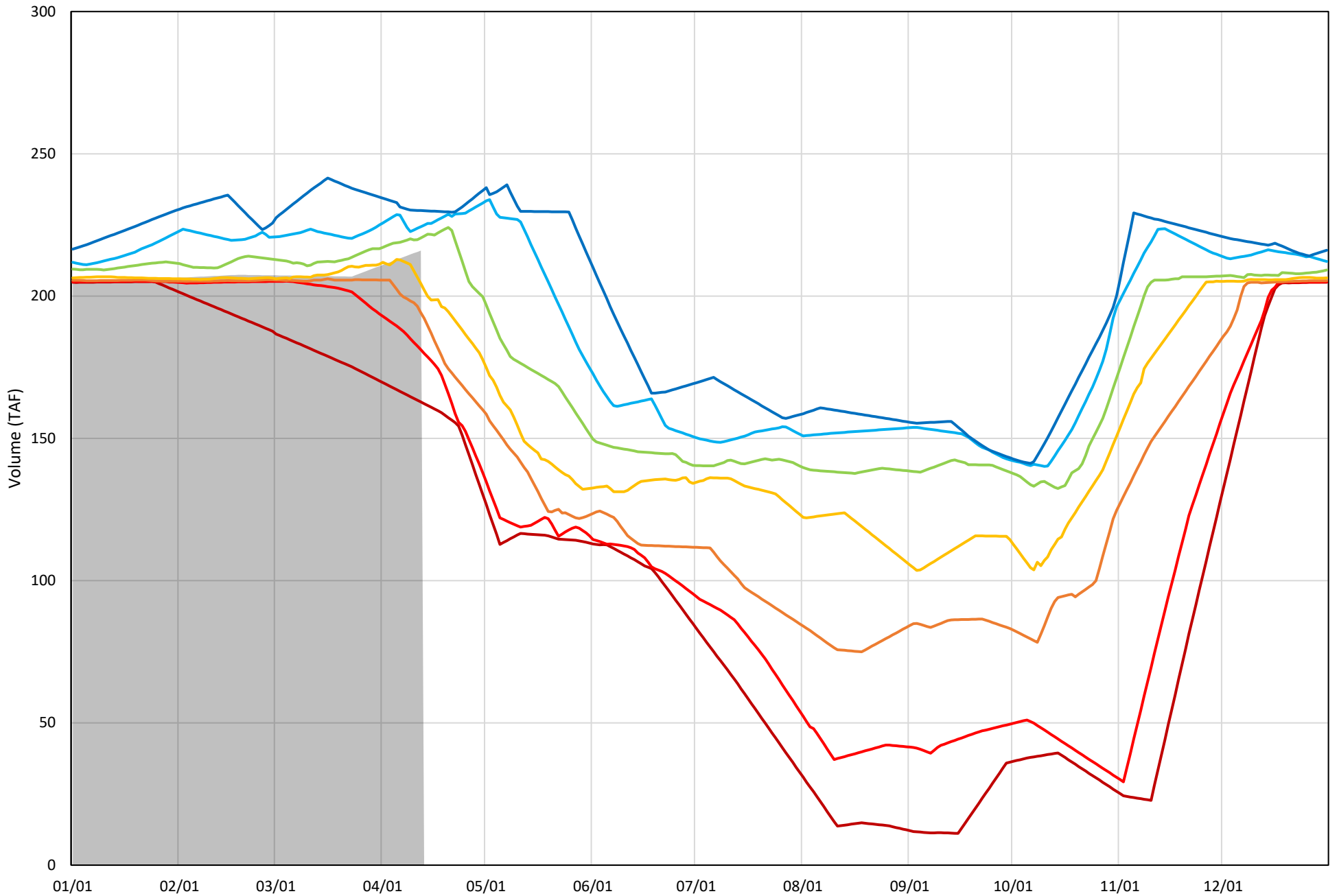
Whiskeytown Lake Cold Water Pool Volume $\leq 60^{\circ}\text{F}$ - Percent Exceedances (2000-2020)

2021 95 90 75 50 25 10 5



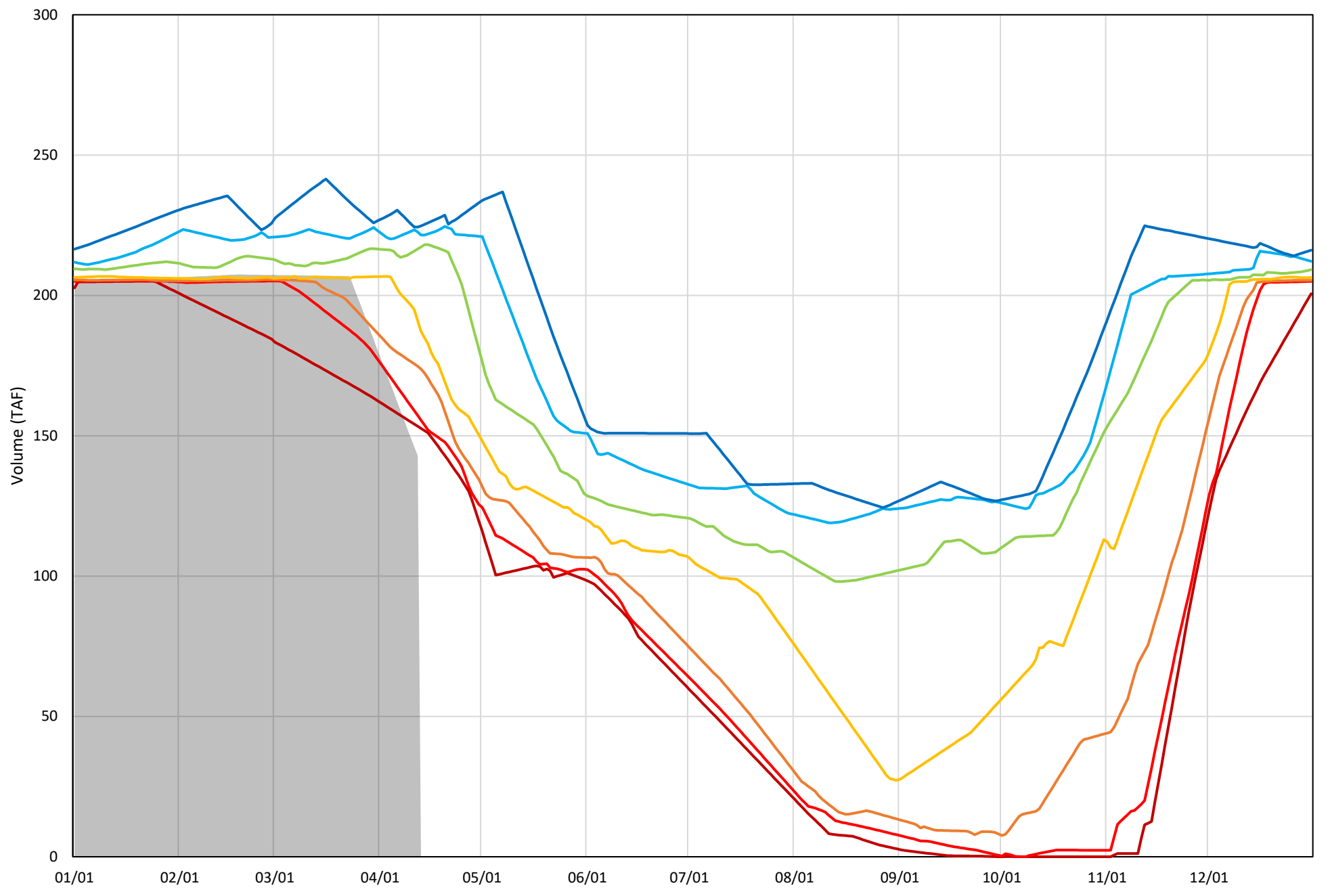
Whiskeytown Lake Cold Water Pool Volume $\leq 58^{\circ}\text{F}$ - Percent Exceedances (2000-2020)

2021 95 90 75 50 25 10 5



Whiskeytown Lake Cold Water Pool Volume $\leq 56^{\circ}\text{F}$ - Percent Exceedances (2000-2020)

2021 95 90 75 50 25 10 5



Whiskeytown Cold Water Pool Comparison by Year (for Specified Date)

Apr-13 2021	Δ TAF				% Δ			
	≤60°	≤58°	≤56°	Abs. Avg.	≤60°	≤58°	≤56°	Abs. Avg.
2000	2	2	-19	8	1	1	-11	4
2001	-4	-23	-23	17	-2	-10	-13	8
2002	-3	-42	-17	21	-1	-19	-9	10
2003	-4	-4	38	15	-2	-2	21	8
2004	-8	-24	-10	14	-3	-11	-5	7
2005	3	3	45	17	1	1	25	9
2006	-2	-2	40	15	-1	-1	22	8
2007	-19	-23	6	16	-9	-10	3	7
2008	-2	-2	36	13	-1	-1	20	7
2009	-25	-29	10	21	-11	-13	5	10
2010	0	0	42	14	0	0	23	8
2011	9	9	43	21	4	4	24	11
2012	-57	-61	-27	48	-26	-27	-15	23
2013	-34	-34	1	23	-15	-16	0	10
2014	-11	-25	3	13	-5	-11	2	6
2015	-28	-29	11	23	-13	-13	6	11
2016	2	-8	16	9	1	-4	9	4
2017	2	-14	14	10	1	-6	8	5
2018	-25	-26	15	22	-11	-12	8	10
2019	-16	-17	24	19	-7	-8	13	9
2020	0	0	0	0	0	0	0	0

Historic - Current

(Historic - Current) / Current