

Northern CVP Water Temperature Report

April - 2020

Page	Description
1	- Mean Daily Water Temperature, Release Flow Rates and Air Temperatures with Monthly Averages
2	- Redding 10-Day Forecasted Air Temperatures
3	- Sacramento River Mean Daily Water Temperature, Air Temperature and 10-Day Forecasted Air Temperature Plot - Water Temperature Measuring Station Details - Temperature Control Point Details
4	- Shasta Lake Isothermobaths Plot
5	- Trinity Lake Isothermobaths Plot
6	- Whiskeytown Lake Isothermobaths Plot
x	- TCD Configuration (External Link)



— BUREAU OF —
RECLAMATION

All Data in this Report is Preliminary and Subject to Change

DATE	Mean Daily Water Temperatures (°F)													Mean Daily Release (CFS)			Mean Daily Air Temperatures (°F)				
	TCD ¹	SHD	SPP ¹	KWK	SAC	CCR	BSF ²	JLF	BND	RDB	IGO	LWS	-----	Shasta Generation	Spring Creek P.P.	Keswick Total	RDD	BSF	RDB	LWS	
Mar	49.4	48.7	48.7	49.2	49.6	50.0	50.6	51.3	51.6	51.9	49.0	47.6	-	3693	969	4891	53.2	51.7	53.3	-	
04/01	49.2	48.6	49.6	49.2	49.9	50.3	51.5	52.5	53.0	53.6	50.3	47.9	-	3219	1644	4949	50.5	49.9	52.6	-	
04/02	# - ?	49.1	49.5	49.4	50.1	50.6	51.4	52.2	52.5	53.0	50.3	47.8	-	2731	1907	4958	53.0	52.2	53.5	-	
04/03	# -	48.7	49.5	49.3	50.1	50.7	51.7	52.5	52.9	53.4	50.5	47.8	-	2795	1880	4956	50.5	50.7	52.9	-	
04/04	# - ?	48.5	49.1	49.3	49.5	49.5	50.2	51.2	51.8	52.5	49.0	46.3	-	3249	1909	4961	46.0	45.3	47.1	-	
04/05	# -	48.6	48.9	49.1	49.6	49.8	50.1	50.5	50.5	50.6	49.2	46.7	-	2635	1800	4958	51.0	51.8	51.4	-	
04/06	# -	48.8	49.1	49.0	49.9	50.5	51.3	51.9	52.0	52.1	50.3	47.1	-	3127	1813	4794	54.0	51.3	52.1	-	
04/07	# -	49.4	48.9	49.2	50.1	50.7	52.3	53.3	53.6	54.0	50.9	48.2	-	2592	1814	4610	54.5	53.5	54.9	-	
04/08	! -	50.4	48.8	49.9	50.8	51.6	53.5	54.6	55.0	55.4	52.0	49.0	-	2496	1900	4493	66.5	61.0	62.1	-	
04/09	50.8	50.5	48.6	49.8	50.6	51.3	53.6	55.1	55.8	56.2	50.8	49.7	-	2708	1830	4500	53.5	54.7	54.7	-	
04/10	50.4	50.0	48.6	50.2	51.3	52.2	54.1	55.2	55.7	56.5	52.4	51.0	-	1952	1834	4478	63.0	61.9	63.2	-	
04/11	51.0	49.9	48.8	50.5	51.6	52.7	55.3	56.8	57.4	58.1	52.6	51.4	-	2342	1944	4483	62.5	61.5	62.0	-	
04/12	51.5 ?	51.1	48.7	51.1	52.0	53.0	55.7	57.5	58.3	59.3	52.7	51.7	-	1911	1819	4478	65.5	65.1	66.0	-	
04/13	51.5 ?	50.6	48.8	51.3	52.1	52.9	55.1	56.5	57.1	58.2	51.5	50.8	-	3172	1368	4472	62.0	58.3	61.5	-	
04/14	51.6 !	-	48.9	50.9	51.9	52.8	54.7	55.9	56.4	57.4	51.5	49.8	-	3075	1797	4982	60.0	58.3	61.9	-	
04/15	51.8 ?	51.1	49.0	51.0	51.8	52.7	54.7	56.0	56.6	57.6	51.9	49.5	-	3328	1883	5466	64.5	62.3	62.5	-	
04/16	52.5 ?	51.6 ?	49.0	51.5	52.3	53.2	55.0	56.4	56.9	57.8	52.3	49.7	-	3497	1866	5501	68.0	63.6	64.6	-	
04/17	52.1 !	-	49.0	51.4	52.3	53.2	55.2	56.6	57.1	58.0	52.1	49.0	-	3712	1888	5888	68.5	61.9	64.3	-	
04/18	51.8 !	- ?	49.0	51.6	52.1	52.7	54.4	55.7	56.4	57.6	51.8	49.0	-	3914	1850	6246	59.0	58.3	58.4	-	
04/19	52.2	51.6	49.2	51.5	52.3	53.0	54.5	55.6	56.0	56.7	52.1	48.9	-	5252	1928	6676	59.5	59.4	59.5	-	
04/20	52.5	51.6	49.2	51.4	52.0	52.5	54.1	55.3	55.7	56.7	51.8	49.6	-	4901	1933	6969	59.0	56.3	57.4	-	
04/21	52.8 ?	52.3	49.4	51.8	52.5	53.1	54.6	55.6	55.9	56.5	52.4	49.9	-	5127	1917	7466	63.0	60.9	62.1	-	
04/22	52.7	51.8	49.5	52.2	52.8	53.4	55.1	56.3	56.8	57.7	52.5	49.1	-	5859	1893	8265	64.0	64.3	66.4	-	
04/23	53.5	52.8	49.6	52.6	53.2	53.8	55.5	56.7	57.2	58.1	53.1	49.2	-	8282	360	9000	66.0	66.0	69.8	-	
04/24	54.0	53.2	50.9	53.4	53.9	54.6	56.0	57.1	57.5	58.3	53.0	49.1	-	9131	37	9403	70.5	66.9	70.6	-	
04/25	53.4	52.8	50.9	54.0	54.3	55.0	56.3	57.4	57.9	58.7	53.3	48.9	-	8645	37	9499	70.5	67.8	70.5	-	
04/26	52.9	52.2	49.6	53.4	54.3	55.0	56.8	58.1	58.5	59.1	53.5	48.9	-	9275	619	9755	68.5	67.6	71.2	-	
04/27	52.6	51.3	49.8	52.7	53.4	54.0	55.9	57.4	58.0	59.4	53.5	49.2	-	8435	1137	9758	71.5	68.9	72.4	-	
04/28	53.2	52.0	49.8	52.5	53.3	54.0	55.8	57.2	57.8	58.9	53.9	49.8	-	8045	594	9701	↑ 74.0	71.3	73.0	-	
04/29	52.7	51.6	49.8	53.0	53.4	54.0	55.6	57.1	57.7	58.8	53.4	49.2	-	8210	1137	9764	73.0	70.9	70.8	-	
04/30	52.5	51.4	49.9	52.7	53.2	53.9	55.8	57.2	57.7	58.7	53.6	49.2	-	7932	1920	9720	70.5	70.4	69.9	-	
-																					
Apr	52.1	50.8	49.3	51.2	51.9	52.5	54.2	55.4	55.9	56.6	51.9	49.1	-	4718	1542	6505	62.1	60.4	62.0	-	
														Total CFS	141549	46258	195149				
														Total AF	280757	91751	387070				

Legend

- ? = 1-9 hours of data missing (Average includes estimations)
- ! = 10 or more hours of data missing (Average not calculated)
- # = Station out of service
- ↑ = Record high air temperature
- ↓ = Record low air temperature
- = Monthly Averages

Notes

- ¹ Temperatures are weighted averages based on individual penstock flow and temperature
- Highlighted cells in the TCD column indicate a TCD change was made on that day
- ² Current control point (see page 3 for more details)
- ³ Column not used this month

DATE	Redding (RDD) Daily Air Temperatures (°F)																																				
	Actual			Forecasted																																	
	Previous Day			Current Day			1 Day			2 Days			3 Days			4 Days			5 Days			6 Days			7 Days			8 Days			9 Days			10 Days			
	↓	↑	Avg	↓	↑	Avg	↓	↑	Avg	↓	↑	Avg	↓	↑	Avg	↓	↑	Avg	↓	↑	Avg	↓	↑	Avg	↓	↑	Avg	↓	↑	Avg	↓	↑	Avg	↓	↑	Avg	
04/01	49	69	59.0	38	63	50.5	35	66	50.5	37	66	51.5	42	58	50.0	42	56	49.0	38	60	49.0	38	69	53.5	47	73	60.0	48	78	63.0	49	79	64.0	51	77	64.0	
04/02	38	63	50.5	40	64	52.0	37	66	51.5	40	55	47.5	44	55	49.5	38	60	49.0	38	68	53.0	42	75	58.5	52	77	64.5	49	83	66.0	49	79	64.0	48	72	60.0	
04/03	40	66	53.0	36	65	50.5	41	55	48.0	44	55	49.5	40	59	49.5	38	67	52.5	41	73	57.0	44	70	57.0	47	74	60.5	45	78	61.5	46	73	59.5	46	71	58.5	
04/04	35	66	50.5	42	53	47.5	43	57	50.0	39	61	50.0	39	68	53.5	42	76	59.0	45	78	61.5	48	77	62.5	52	81	66.5	51	79	65.0	50	78	64.0	50	75	62.5	
04/05	41	51	46.0	49	57	53.0	40	62	51.0	40	72	56.0	44	80	62.0	45	81	63.0	49	80	64.5	46	81	63.5	55	81	68.0	53	82	67.5	50	80	65.0	52	75	63.5	
04/06	45	57	51.0	45	62	53.5	41	71	56.0	45	81	63.0	47	80	63.5	49	79	64.0	49	81	65.0	50	80	65.0	56	83	69.5	53	84	68.5	52	80	66.0	52	77	64.5	
04/07	44	64	54.0	41	72	56.5	45	82	63.5	47	78	62.5	50	78	64.0	48	83	65.5	50	80	65.0	48	78	63.0	53	83	68.0	52	86	69.0	53	82	67.5	52	76	64.0	
04/08	41	68	54.5	49	81	65.0	48	76	62.0	49	78	63.5	48	81	64.5	48	78	63.0	47	78	62.5	46	80	63.0	53	82	67.5	52	79	65.5	52	76	64.0	49	72	60.5	
04/09	48	85	66.5	45	71	58.0	49	76	62.5	49	80	64.5	49	78	63.5	47	78	62.5	46	80	63.0	47	80	63.5	53	83	68.0	53	84	68.5	53	82	67.5	53	80	66.5	
04/10	44	63	53.5	51	77	64.0	49	79	64.0	48	78	63.0	47	80	63.5	46	82	64.0	48	83	65.5	50	82	66.0	52	73	62.5	48	72	60.0	49	76	62.5	52	78	65.0	
04/11	51	75	63.0	49	81	65.0	49	77	63.0	46	75	60.5	44	81	62.5	47	80	63.5	50	76	63.0	48	73	60.5	48	71	59.5	48	75	61.5	51	78	64.5	53	79	66.0	
04/12	49	76	62.5	57	77	67.0	47	75	61.0	44	79	61.5	48	83	65.5	51	76	63.5	48	78	63.0	49	73	61.0	51	74	62.5	49	73	61.0	51	77	64.0	53	80	66.5	
04/13	53	78	65.5	50	75	62.5	44	79	61.5	48	82	65.0	51	81	66.0	50	80	65.0	51	73	62.0	50	70	60.0	51	71	61.0	48	74	61.0	50	75	62.5	51	78	64.5	
04/14	48	76	62.0	43	80	61.5	49	81	65.0	52	79	65.5	46	79	62.5	48	74	61.0	49	71	60.0	49	69	59.0	49	75	62.0	49	75	62.0	52	82	67.0	50	76	63.0	
04/15	41	79	60.0	48	82	65.0	53	79	66.0	48	80	64.0	49	74	61.5	48	71	59.5	49	66	57.5	49	74	61.5	51	80	65.5	51	84	67.5	51	82	66.5	51	80	65.5	
04/16	47	82	64.5	56	79	67.5	49	78	63.5	49	73	61.0	49	74	61.5	49	73	61.0	48	79	63.5	51	77	64.0	53	83	68.0	51	79	65.0	49	81	65.0	53	82	67.5	
04/17	56	80	68.0	60	79	69.5	48	73	60.5	47	72	59.5	47	72	59.5	47	78	62.5	50	77	63.5	50	79	64.5	52	80	66.0	52	83	67.5	52	82	67.0	53	77	65.0	
04/18	58	79	68.5	51	74	62.5	46	72	59.0	47	72	59.5	46	79	62.5	49	79	64.0	52	82	67.0	51	83	67.0	52	84	68.0	55	85	70.0	54	84	69.0	57	85	71.0	
04/19	50	68	59.0	53	70	61.5	47	73	60.0	47	80	63.5	50	74	62.0	52	82	67.0	53	85	69.0	53	88	70.5	53	84	68.5	53	85	69.0	55	86	70.5	57	86	71.5	
04/20	50	69	59.5	47	73	60.0	46	81	63.5	51	80	65.5	53	83	68.0	53	86	69.5	56	87	71.5	53	84	68.5	49	81	65.0	51	84	67.5	54	88	71.0	56	82	69.0	
04/21	47	71	59.0	46	80	63.0	49	79	64.0	51	82	66.5	52	86	69.0	55	87	71.0	53	83	68.0	52	84	68.0	53	85	69.0	55	89	72.0	55	89	72.0	58	87	72.5	
04/22	45	81	63.0	50	76	63.0	51	81	66.0	52	86	69.0	55	86	70.5	53	86	69.5	52	86	69.0	56	93	74.5	59	91	75.0	59	90	74.5	58	84	71.0	54	78	66.0	
04/23	48	80	64.0	52	82	67.0	53	86	69.5	56	85	70.5	52	86	69.0	52	85	68.5	56	94	75.0	61	93	77.0	58	90	74.0	58	89	73.5	52	81	66.5	55	86	70.5	
04/24	50	82	66.0	55	86	70.5	57	85	71.0	53	85	69.0	52	85	68.5	57	94	75.5	61	92	76.5	58	88	73.0	54	79	66.5	50	73	61.5	52	77	64.5	49	78	63.5	
04/25	53	88	70.5	58	83	70.5	53	86	69.5	54	84	69.0	55	94	74.5	59	89	74.0	56	85	70.5	52	81	66.5	46	72	59.0	51	74	62.5	49	78	63.5	51	78	64.5	
04/26	57	84	70.5	52	86	69.0	53	83	68.0	56	94	75.0	61	87	74.0	55	81	68.0	50	81	65.5	50	78	64.0	51	75	63.0	48	77	62.5	51	79	65.0	53	81	67.0	
04/27	51	86	68.5	60	83	71.5	55	94	74.5	61	87	74.0	56	81	68.5	50	81	65.5	50	77	63.5	47	75	61.0	48	75	61.5	49	79	64.0	52	79	65.5	53	81	67.0	
04/28	59	84	71.5	57	92	74.5	60	87	73.5	56	80	68.0	50	81	65.5	50	79	64.5	50	74	62.0	45	78	61.5	49	81	65.0	51	85	68.0	54	86	70.0	56	85	70.5	
04/29	55	93	74.0	61	86	73.5	55	83	69.0	51	82	66.5	50	80	65.0	51	73	62.0	43	78	60.5	47	82	64.5	51	85	68.0	54	90	72.0	57	90	73.5	59	89	74.0	
04/30	61	85	73.0	59	80	69.5	48	79	63.5	51	75	63.0	49	74	61.5	45	78	61.5	47	83	65.0	50	87	68.5	59	92	75.5	60	96	78.0	57	93	75.0	58	87	72.5	
-																																					

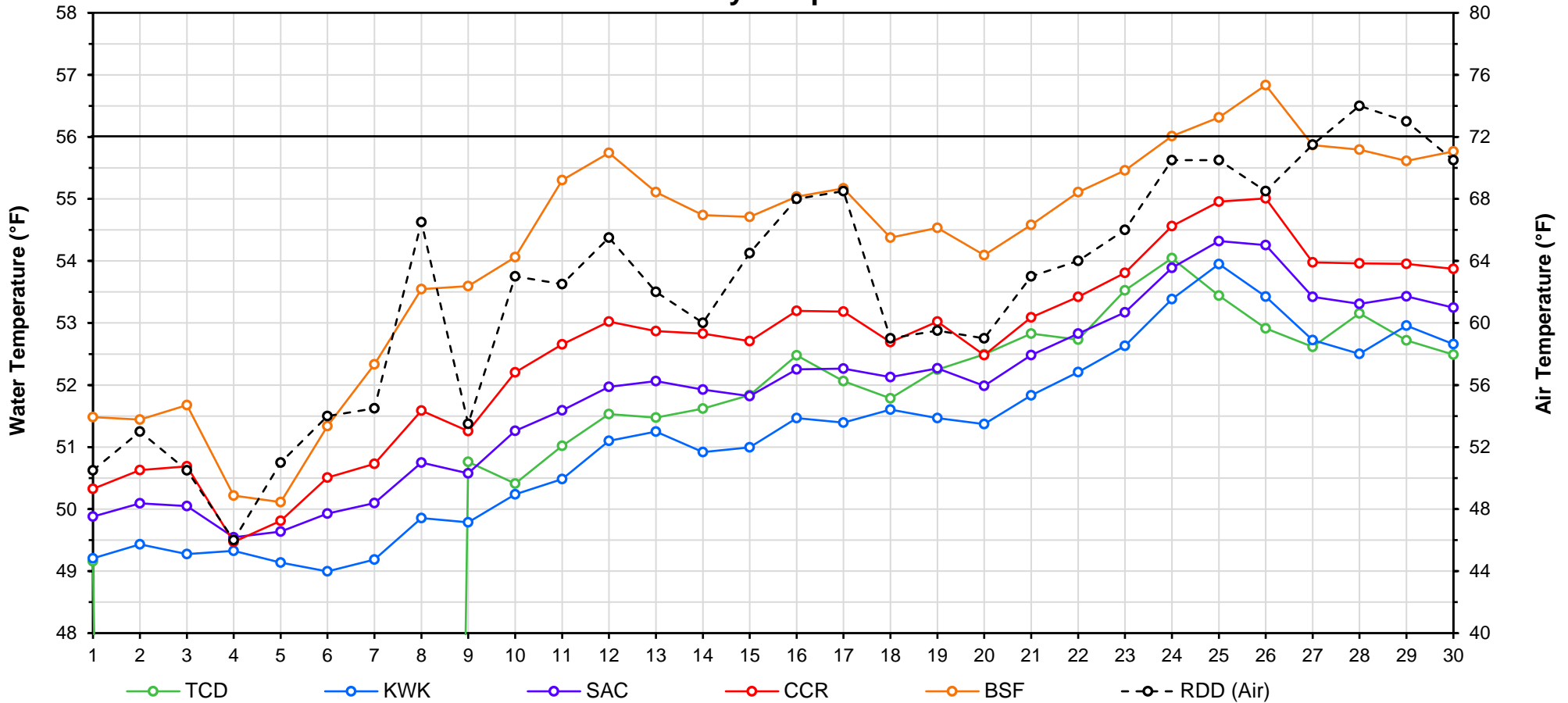
Web Links

- [10-Day Min/Max Forecast](#)
- [Previous Days Min/Max Actuals](#)

Legend

- NR = Forecasted temperatures not recorded
- 100** = Previous day actual temperatures in red and bolded indicate a record temperature for that date

Mean Daily Temperatures



Station Details			
Code	Body of Water	Location ¹	CDEC Link
TCD	N/A	Shasta Power Plant	N/A
SHD	Sacramento River	0.3 miles downstream of Shasta Power Plant	Click Here
SPP	N/A	Spring Creek Power Plant	N/A
KWK	Sacramento River	0.8 miles downstream of Keswick Dam	Click Here
SAC	Sacramento River	4.8 miles downstream of Keswick Dam	Click Here
CCR	Sacramento River	9.7 miles downstream of Keswick Dam	Click Here
BSF	Sacramento River	25 miles downstream of Keswick Dam	Click Here
JLF	Sacramento River	34 miles downstream of Keswick Dam	Click Here
BND	Sacramento River	41 miles downstream of Keswick Dam	Click Here
RDB	Sacramento River	58 miles downstream of Keswick Dam	Click Here
IGO	Clear Creek	7.3 miles downstream of Whiskeytown Dam	Click Here
LWS	Trinity River	1.1 miles downstream of Lewiston Dam	Click Here
DGC ²	Trinity River	19 miles downstream of Lewiston Dam	Click Here
NFH ³	Trinity River	38 miles downstream of Lewiston Dam	Click Here

Temperature Control Point		
Point	Temp. (°F)	Begin Date
BSF	56.0	5/15/2019

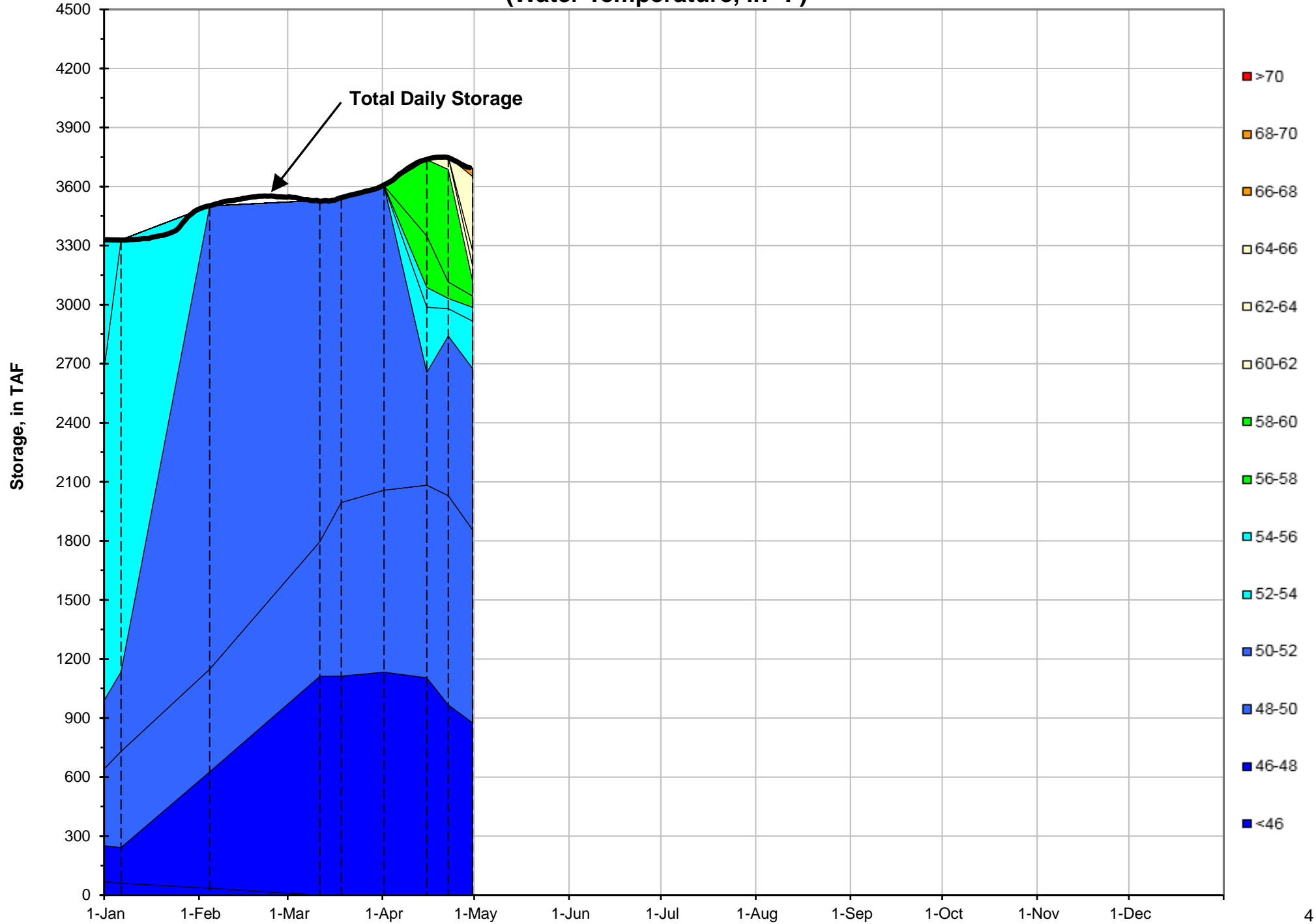
Notes

¹ Distances are approximate

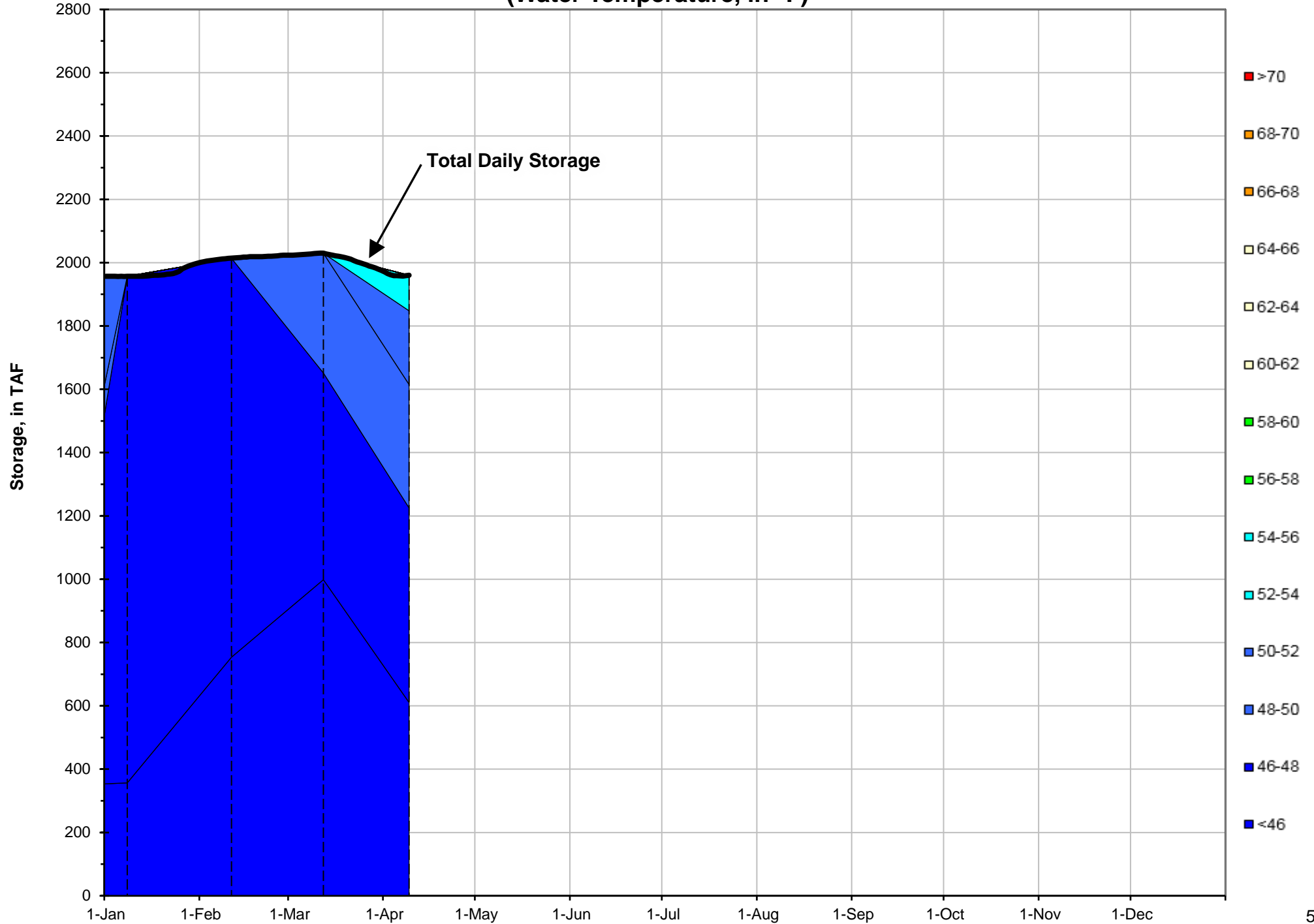
² DGC is only reported in September

³ NFH is only reported in October, November and December

Shasta Lake Isothermobaths - 2020 (Water Temperature, in °F)



Trinity Lake Isothermobaths - 2020 (Water Temperature, in °F)



Whiskeytown Lake Isothermobaths - 2020 (Water Temperature, in °F)

