

Northern CVP Water Temperature Report

April - 2018

Page	Description
1	- Mean Daily Water Temperature, Release Flow Rates and Air Temperatures with Monthly Averages
2	- Redding 10-Day Forecasted Air Temperatures
3	- Sacramento River Mean Daily Water Temperature, Air Temperature and 10-Day Forecasted Air Temperature Plot - Water Temperature Measuring Station Details - Temperature Control Point Details
4	- Daily Maximum and 7DADM
5	- Shasta Lake Isothermobaths Plot
6	- Trinity Lake Isothermobaths Plot
7	- Whiskeytown Lake Isothermobaths Plot
x	- TCD Configuration (External Link)



All Data in this Report is Preliminary and Subject to Change

DATE	Mean Daily Water Temperatures (°F)													Mean Daily Release (CFS)			Mean Daily Air Temperatures (°F)			
	TCD ¹	SHD	SPP ¹	KWK	SAC	CCR	BSF ²	JLF	BND	RDB	IGO	LWS	----- ³	Shasta Generation	Spring Creek P.P.	Keswick Total	RDD	BSF	RDB	LWS
Mar	49.7	48.9	47.9	49.4	49.6	50.2	50.7	51.1	51.3	51.7	47.6	46.8	-	2702	152	3087	52.5	51.1	52.5	43.8
04/01	50.2	49.5	48.6	51.3	51.9	53.0	55.2	56.3	56.7	57.6	50.1	50.0	-	2046	679	3044	62.5	62.0	64.3	54.0
04/02	51.1	50.6	49.0	51.6	52.2	53.4	55.8	56.9	57.4	58.3	50.4	50.4	-	2533	50	3045	62.5	61.8	64.0	54.4
04/03	51.2	50.1	48.9	51.4	52.0	53.0	54.8	55.8	56.3	57.8	49.4	50.1	-	3027	17	3045	61.5	56.6	61.1	51.0
04/04	51.1	49.7	48.2	51.5	51.8	52.8	55.1	56.2	56.7	57.7	50.0	50.9	-	2960	131	3043	65.5	63.0	65.3	57.3
04/05	51.0	50.2	48.8	51.5	51.7	52.3	54.0	55.2	55.7	56.9	49.5	50.6	-	3131	36	3046	56.5	57.1	57.5	50.6
04/06	51.0	50.0	48.8	51.5	51.8	52.1	53.5	53.8	54.3	55.0	50.1	50.1	-	2766	16	3044	53.5	53.4	55.2	49.0
04/07	50.6	50.0	48.4	51.4	53.8	54.0	56.6	56.5	56.3	57.0	52.8	50.9	-	1892	490	3045	59.5	61.0	61.4	51.7
04/08	50.5	49.6	48.9	51.3	52.3	53.3	54.7	55.2	55.4	56.7	50.5	51.3	-	1612	1306	3043	58.0	56.1	57.0	50.5
04/09	51.4	? 51.0	48.6	51.3	52.2	53.2	55.0	55.7	55.8	56.5	51.0	51.2	-	2231	337	3045	64.0	59.9	62.0	54.7
04/10	50.6	49.4	48.8	51.5	52.1	53.1	55.6	56.6	56.7	57.3	51.2	51.6	-	2594	48	2963	63.0	61.0	61.7	54.8
04/11	50.6	49.7	48.8	51.7	51.6	52.2	53.9	54.8	55.2	56.2	49.7	49.9	-	2542	14	3043	49.5	53.3	52.7	43.5
04/12	50.6	49.5	48.8	51.5	51.8	52.1	51.9	52.4	? 52.5	53.5	48.7	49.8	-	3066	14	3044	48.5	48.6	50.5	42.7
04/13	51.3	50.5	48.9	51.1	51.8	52.7	52.9	53.3	53.3	53.9	49.6	50.6	-	2905	18	3050	55.0	53.0	54.5	46.8
04/14	51.0	49.9	49.0	51.1	51.9	53.2	55.0	55.8	55.9	56.1	50.9	51.5	-	3061	15	3094	59.5	58.5	60.1	53.3
04/15	50.9	50.2	49.0	51.3	51.2	51.9	54.4	55.9	56.4	57.1	49.6	50.7	-	2606	14	3096	52.0	56.5	57.8	44.8
04/16	50.9	50.3	48.6	51.4	51.6	51.9	52.3	52.9	53.0	54.2	48.8	51.0	-	2637	92	3097	50.5	49.9	49.6	42.6
04/17	51.2	50.6	49.1	51.2	51.8	52.5	52.7	53.3	53.5	54.2	49.5	50.8	-	2890	14	3140	49.0	48.3	49.8	43.6
04/18	51.6	50.2	49.1	51.1	51.4	52.3	53.4	53.8	53.9	54.5	49.4	49.7	-	2611	14	3173	53.0	51.3	51.8	46.3
04/19	52.0	51.1	49.2	51.6	52.0	52.9	53.5	54.2	54.4	54.9	50.5	49.3	-	3096	14	3175	↓ 56.5	54.4	56.3	48.5
04/20	52.2	51.1	49.3	51.9	52.7	53.8	55.6	56.4	56.6	57.1	51.2	49.4	-	3419	14	3522	64.0	61.9	63.0	54.7
04/21	51.7	50.7	49.4	52.4	53.2	54.3	56.6	58.0	58.3	59.2	52.0	50.1	-	3558	14	3732	66.0	64.2	65.9	58.5
04/22	51.1	50.6	49.4	52.9	53.6	54.7	57.3	58.8	59.2	60.3	51.9	50.5	-	3079	14	3727	68.0	64.4	65.5	57.1
04/23	50.5	49.4	49.5	53.2	53.9	55.0	57.6	59.1	59.5	60.7	51.9	50.8	-	3628	14	4278	↑ 71.5	66.7	68.6	58.6
04/24	50.9	50.2	49.5	52.5	53.3	54.4	57.2	58.9	59.4	60.9	51.8	50.6	-	4180	62	4930	68.0	65.3	67.2	60.1
04/25	50.5	49.6	49.5	51.7	52.6	53.6	56.6	58.4	59.0	60.7	52.5	50.6	-	5320	14	5473	69.0	66.6	68.8	62.5
04/26	50.7	49.7	48.8	51.5	52.3	53.3	56.2	58.1	58.6	60.3	52.6	50.5	-	5399	185	5698	67.0	65.0	66.8	62.3
04/27	50.9	? 49.7	49.7	51.4	51.7	52.3	54.9	56.9	57.6	59.0	51.2	50.3	-	5550	14	6117	59.5	57.4	58.3	52.6
04/28	50.5	49.5	49.5	51.0	51.3	51.8	53.5	54.8	55.3	56.7	50.9	49.9	-	5928	20	6113	55.5	53.1	55.6	48.2
04/29	50.4	49.4	48.9	50.9	51.4	52.0	53.7	54.8	54.9	55.8	51.3	49.7	-	6138	193	6569	57.0	56.4	58.1	50.7
04/30	50.5	49.6	49.0	50.5	51.1	51.8	53.9	55.3	55.6	56.9	51.7	49.6	-	6285	259	6652	60.0	58.8	60.5	51.1
-																				
Apr	51.0	50.1	49.0	51.5	52.1	53.0	54.8	55.8	56.1	57.1	50.7	50.4	-	3423	137	3836	59.5	58.2	59.7	51.9

Total CFS	102690	4122	115086
Total AF	203681	8176	228268

Legend

- ? = 1-9 hours of data missing (Average includes estimations)
- ! = 10 or more hours of data missing (Average not calculated)
- # = Station out of service
- ↑ = Record high air temperature
- ↓ = Record low air temperature
- = Monthly Averages

Notes

- ¹ Temperatures are weighted averages based on individual penstock flow and temperature
- Highlighted cells in the TCD column indicate a TCD change was made on that day
- ² Current control point (see page 3 for more details)
- ³ Column not used this month

D A T E	Redding (RDD) Daily Air Temperatures (°F)																																					
	Actual			Forecasted																																		
	Previous Day			Current Day			1 Day			2 Days			3 Days			4 Days			5 Days			6 Days			7 Days			8 Days			9 Days			10 Days				
	↓	↑	Avg	↓	↑	Avg	↓	↑	Avg	↓	↑	Avg	↓	↑	Avg	↓	↑	Avg	↓	↑	Avg	↓	↑	Avg	↓	↑	Avg	↓	↑	Avg	↓	↑	Avg	↓	↑	Avg		
04/01	48	79	63.5	49	78	63.5	48	74	61.0	43	77	60.0	48	76	62.0	50	68	59.0	52	68	60.0	50	69	59.5	45	73	59.0	46	80	63.0	45	75	60.0	49	75	62.0		
04/02	45	80	62.5	53	73	63.0	42	76	59.0	49	74	61.5	49	68	58.5	51	65	58.0	52	69	60.5	46	70	58.0	46	70	58.0	49	65	57.0	44	69	56.5	48	72	60.0		
04/03	51	74	62.5	47	76	61.5	49	76	62.5	51	68	59.5	51	63	57.0	53	66	59.5	45	68	56.5	45	72	58.5	50	69	59.5	47	76	61.5	47	71	59.0	50	74	62.0		
04/04	47	76	61.5	55	76	65.5	51	65	58.0	51	63	57.0	52	65	58.5	45	68	56.5	45	74	59.5	48	68	58.0	43	65	54.0	47	66	56.5	46	71	58.5	49	75	62.0		
04/05	54	77	65.5	53	64	58.5	50	62	56.0	52	66	59.0	44	70	57.0	43	75	59.0	48	64	56.0	44	66	55.0	43	64	53.5	43	65	54.0	46	73	59.5	48	71	59.5		
04/06	51	62	56.5	51	60	55.5	52	65	58.5	44	72	58.0	46	82	64.0	50	68	59.0	46	65	55.5	41	63	52.0	43	69	56.0	48	73	60.5	46	72	59.0	47	72	59.5		
04/07	51	56	53.5	56	65	60.5	45	68	56.5	46	83	64.5	52	71	61.5	48	65	56.5	41	60	50.5	40	71	55.5	44	68	56.0	46	70	58.0	47	70	58.5	47	76	61.5		
04/08	50	69	59.5	49	70	59.5	46	81	63.5	51	70	60.5	48	64	56.0	40	61	50.5	39	70	54.5	44	70	57.0	49	74	61.5	46	69	57.5	46	73	59.5	48	72	60.0		
04/09	48	68	58.0	50	82	66.0	55	66	60.5	48	61	54.5	39	58	48.5	39	72	55.5	46	74	60.0	48	72	60.0	44	72	58.0	46	79	62.5	48	82	65.0	53	79	66.0		
04/10	48	80	64.0	57	66	61.5	47	59	53.0	39	59	49.0	38	72	55.0	45	74	59.5	48	68	58.0	43	64	53.5	41	65	53.0	46	67	56.5	46	78	62.0	51	76	63.5		
04/11	57	69	63.0	52	59	55.5	37	60	48.5	38	72	55.0	46	74	60.0	47	61	54.0	41	60	50.5	38	62	50.0	43	70	56.5	47	74	60.5	49	79	64.0	53	77	65.0		
04/12	40	59	49.5	37	60	48.5	38	72	55.0	46	74	60.0	48	65	56.5	42	56	49.0	38	60	49.0	42	62	52.0	47	73	60.0	48	77	62.5	51	79	65.0	50	77	63.5		
04/13	36	61	48.5	39	72	55.5	47	74	60.5	48	63	55.5	40	56	48.0	37	61	49.0	42	62	52.0	43	68	55.5	48	77	62.5	50	83	66.5	52	82	67.0	52	81	66.5		
04/14	37	73	55.0	45	75	60.0	49	60	54.5	40	57	48.5	36	62	49.0	41	65	53.0	42	70	56.0	44	75	59.5	49	76	62.5	48	75	61.5	49	77	63.0	51	78	64.5		
04/15	45	74	59.5	41	59	50.0	40	57	48.5	34	63	48.5	41	65	53.0	41	72	56.5	45	78	61.5	48	79	63.5	52	80	66.0	50	82	66.0	52	82	67.0	53	82	67.5		
04/16	41	63	52.0	44	57	50.5	35	63	49.0	42	64	53.0	40	73	56.5	46	80	63.0	49	82	65.5	51	82	66.5	55	84	69.5	52	83	67.5	51	80	65.5	52	78	65.0		
04/17	43	58	50.5	36	64	50.0	43	64	53.5	41	73	57.0	46	81	63.5	51	83	67.0	50	83	66.5	53	82	67.5	54	81	67.5	51	82	66.5	52	87	69.5	56	85	70.5		
04/18	35	63	49.0	45	63	54.0	41	74	57.5	49	81	65.0	51	85	68.0	53	84	68.5	53	85	69.0	53	81	67.0	55	87	71.0	55	85	70.0	56	83	69.5	52	76	64.0		
04/19	43	63	53.0	40	74	57.0	48	82	65.0	51	87	69.0	53	83	68.0	54	86	70.0	54	82	68.0	54	83	68.5	54	82	68.0	50	79	64.5	48	82	65.0	53	80	66.5		
04/20	39	74	56.5	48	82	65.0	50	85	67.5	54	84	69.0	54	86	70.0	54	84	69.0	53	85	69.0	54	82	68.0	52	75	63.5	48	81	64.5	51	83	67.0	54	80	67.0		
04/21	46	82	64.0	46	85	65.5	51	83	67.0	52	87	69.5	55	89	72.0	56	89	72.5	55	87	71.0	54	79	66.5	51	77	64.0	49	81	65.0	52	84	68.0	55	81	68.0		
04/22	46	86	66.0	50	84	67.0	54	87	70.5	56	89	72.5	57	87	72.0	54	84	69.0	51	76	63.5	49	72	60.5	49	73	61.0	50	80	65.0	54	82	68.0	55	80	67.5		
04/23	50	86	68.0	65	89	77.0	55	88	71.5	56	89	72.5	54	85	69.5	50	72	61.0	47	71	59.0	47	74	60.5	48	75	61.5	50	83	66.5	53	84	68.5	52	82	67.0		
04/24	55	88	71.5	50	87	68.5	55	88	71.5	54	83	68.5	49	71	60.0	48	68	58.0	48	68	58.0	47	72	59.5	51	80	65.5	53	85	69.0	55	86	70.5	56	84	70.0		
04/25	50	86	68.0	52	88	70.0	54	84	69.0	50	70	60.0	47	68	57.5	47	69	58.0	48	76	62.0	49	85	67.0	55	86	70.5	56	86	71.0	57	86	71.5	57	85	71.0		
04/26	51	87	69.0	53	83	68.0	50	69	59.5	47	67	57.0	48	70	59.0	46	76	61.0	48	82	65.0	52	87	69.5	55	85	70.0	56	86	71.0	55	83	69.0	55	80	67.5		
04/27	51	83	67.0	51	69	60.0	47	64	55.5	46	67	56.5	45	73	59.0	47	80	63.5	51	84	67.5	53	85	69.0	56	85	70.5	55	87	71.0	55	83	69.0	56	84	70.0		
04/28	51	68	59.5	51	63	57.0	46	68	57.0	45	73	59.0	46	79	62.5	49	84	66.5	52	84	68.0	55	85	70.0	56	88	72.0	58	91	74.5	58	90	74.0	58	86	72.0		
04/29	50	61	55.5	48	68	58.0	46	73	59.5	48	80	64.0	49	84	66.5	52	84	68.0	54	85	69.5	57	86	71.5	58	90	74.0	58	87	72.5	57	87	72.0	58	86	72.0		
04/30	47	67	57.0	47	72	59.5	47	81	64.0	49	84	66.5	51	85	68.0	53	85	69.0	54	84	69.0	53	86	69.5	57	89	73.0	57	92	74.5	57	89	73.0	60	88	74.0		
-																																						

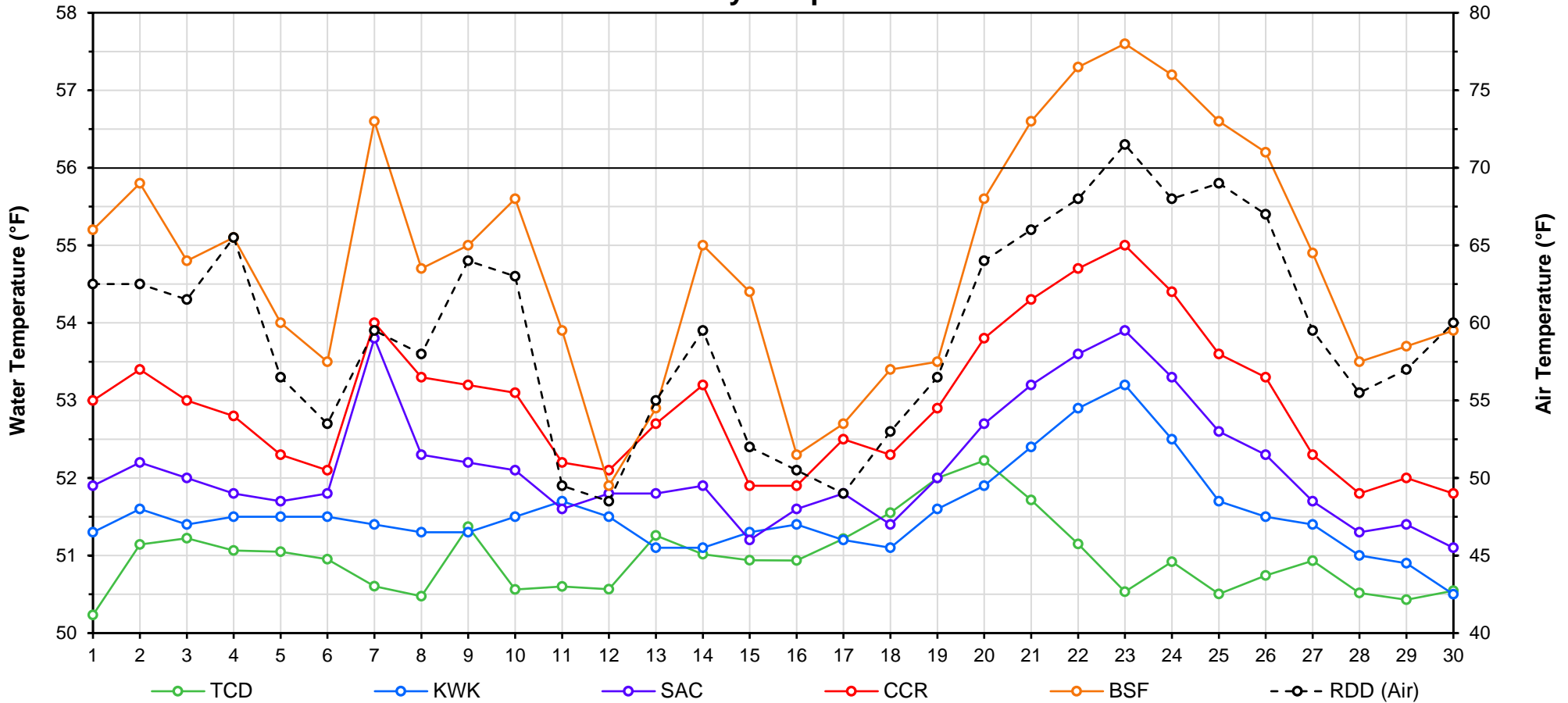
Web Links

- [10-Day Min/Max Forecast](#)
- [Previous Days Min/Max Actuals](#)

Legend

- NR = Forecasted temperatures not recorded
- 100** = Previous day actual temperatures in red and bolded indicate a record temperature for that date

Mean Daily Temperatures



Station Details			
Code	Body of Water	Location ¹	CDEC Link
TCD	N/A	Shasta Power Plant	N/A
SHD	Sacramento River	0.3 miles downstream of Shasta Power Plant	Click Here
SPP	N/A	Spring Creek Power Plant	N/A
KWK	Sacramento River	0.8 miles downstream of Keswick Dam	Click Here
SAC	Sacramento River	4.8 miles downstream of Keswick Dam	Click Here
CCR	Sacramento River	9.7 miles downstream of Keswick Dam	Click Here
BSF	Sacramento River	25 miles downstream of Keswick Dam	Click Here
JLF	Sacramento River	34 miles downstream of Keswick Dam	Click Here
BND	Sacramento River	41 miles downstream of Keswick Dam	Click Here
RDB	Sacramento River	58 miles downstream of Keswick Dam	Click Here
IGO	Clear Creek	7.3 miles downstream of Whiskeytown Dam	Click Here
LWS	Trinity River	1.1 miles downstream of Lewiston Dam	Click Here
DGC ²	Trinity River	19 miles downstream of Lewiston Dam	Click Here
NFH ³	Trinity River	38 miles downstream of Lewiston Dam	Click Here

Temperature Control Point		
Point	Temp. (°F)	Date Range
BSF	56.0	06/01/17 - Current

Notes

¹ Distances are approximate

² DGC is only reported in September

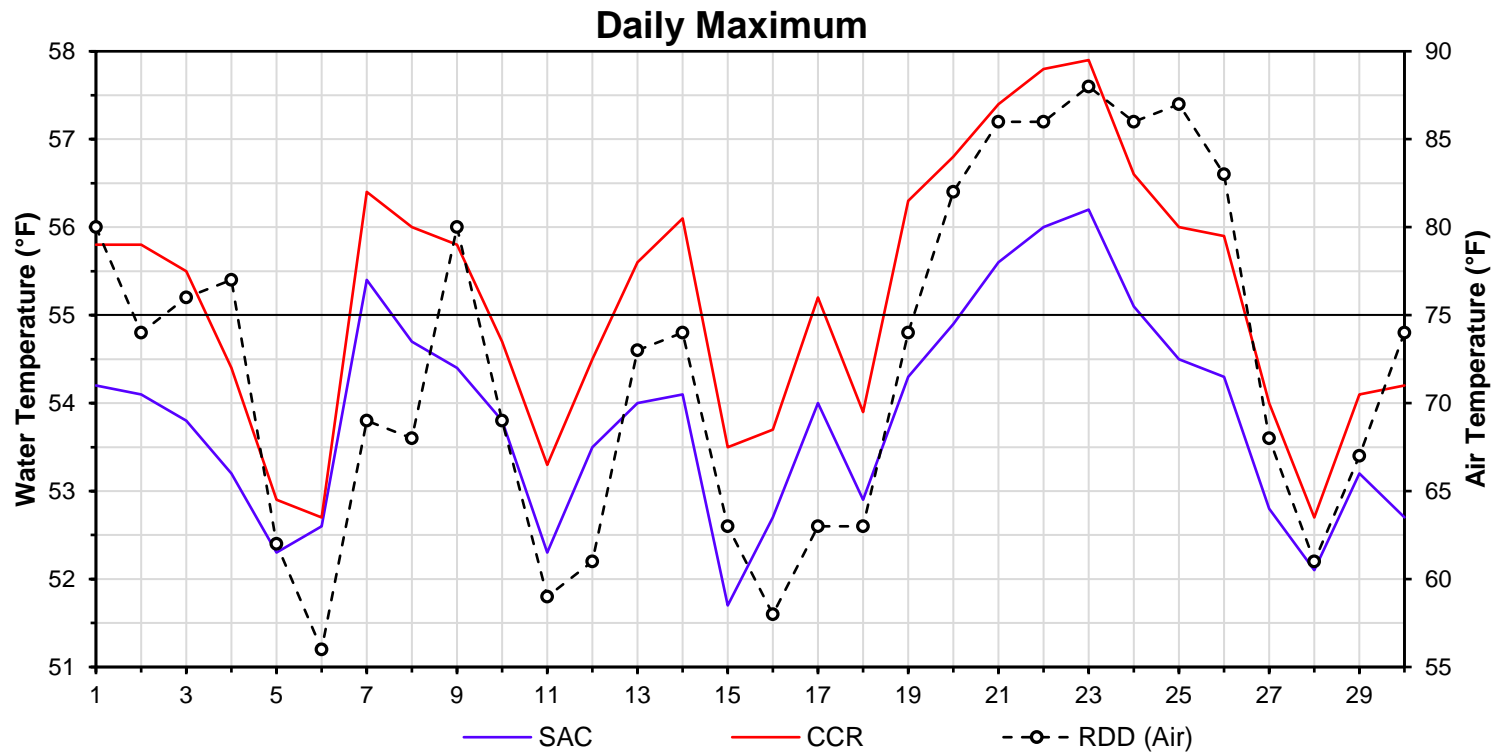
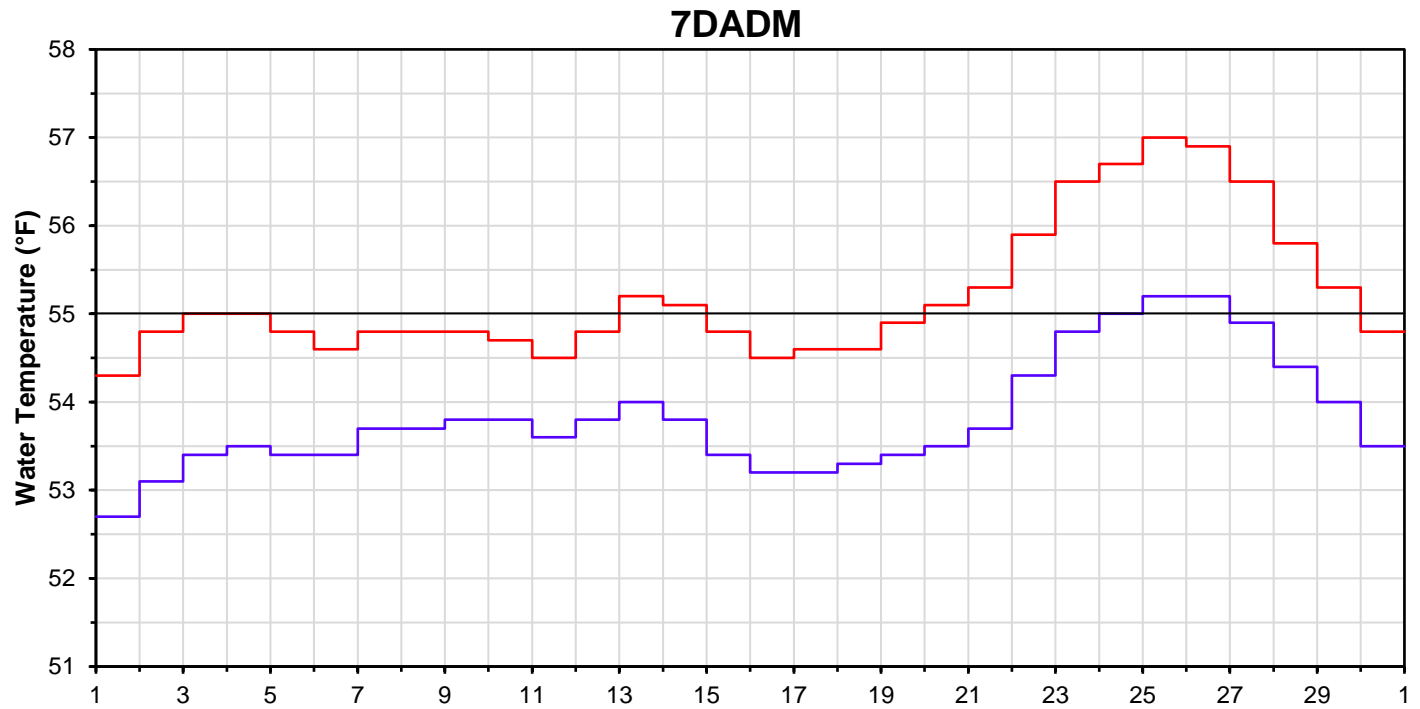
³ NFH is only reported in October, November and December

DATE	Daily Max		7DADM ¹		DAT ²
	SAC	CCR	SAC	CCR	BSF
04/01	54.2	55.8	52.7	54.3	55.2
04/02	54.1	55.8	53.1	54.8	55.8
04/03	53.8	55.5	53.4	55.0	54.8
04/04	53.2	54.4	53.5	55.0	55.1
04/05	52.3	52.9	53.4	54.8	54.0
04/06	52.6	52.7	53.4	54.6	53.5
04/07	55.4	56.4	53.7	54.8	56.6
04/08	54.7	56.0	53.7	54.8	54.7
04/09	54.4	55.8	53.8	54.8	55.0
04/10	53.8	54.7	53.8	54.7	55.6
04/11	52.3	53.3	53.6	54.5	53.9
04/12	53.5	54.5	53.8	54.8	51.9
04/13	54.0	55.6	54.0	55.2	52.9
04/14	54.1	56.1	53.8	55.1	55.0
04/15	51.7	53.5	53.4	54.8	54.4
04/16	52.7	53.7	53.2	54.5	52.3
04/17	54.0	55.2	53.2	54.6	52.7
04/18	52.9	53.9	53.3	54.6	53.4
04/19	54.3	56.3	53.4	54.9	53.5
04/20	54.9	56.8	53.5	55.1	55.6
04/21	55.6	57.4	53.7	55.3	56.6
04/22	56.0	57.8	54.3	55.9	57.3
04/23	56.2	57.9	54.8	56.5	57.6
04/24	55.1	56.6	55.0	56.7	57.2
04/25	54.5	56.0	55.2	57.0	56.6
04/26	54.3	55.9	55.2	56.9	56.2
04/27	52.8	54.0	54.9	56.5	54.9
04/28	52.1	52.7	54.4	55.8	53.5
04/29	53.2	54.1	54.0	55.3	53.7
04/30	52.7	54.2	53.5	54.8	53.9
-					

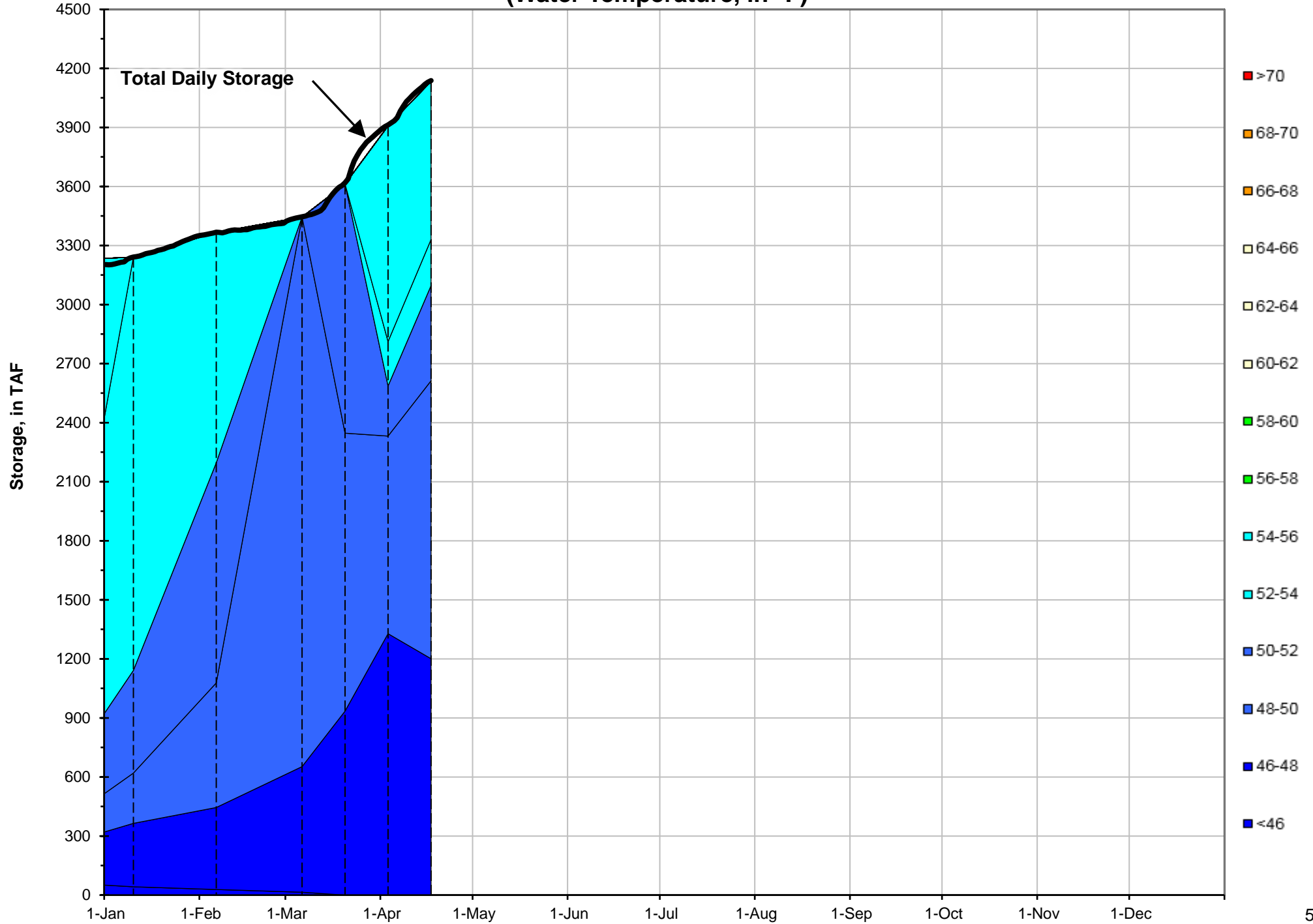
Notes

¹ 7DADM = 7-Day Average
Daily Maximum

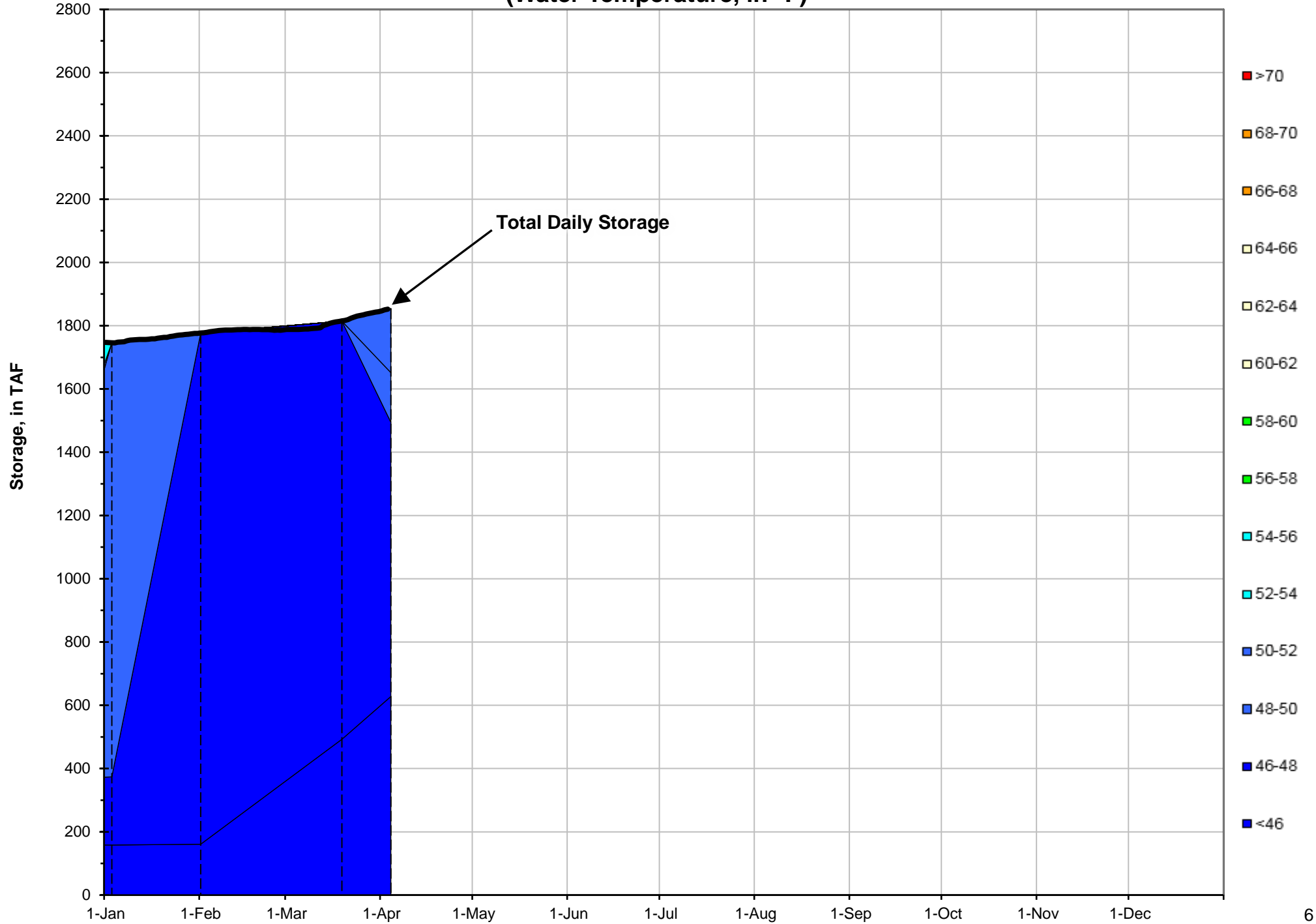
² DAT = Daily Average
Temperature



Shasta Lake Isothermobaths - 2018 (Water Temperature, in °F)



Trinity Lake Isothermobaths - 2018 (Water Temperature, in °F)



Whiskeytown Lake Isothermobaths - 2018 (Water Temperature, in °F)

