

Northern CVP Water Temperature Report

April - 2016

Page	Description
1	- Mean Daily Water Temperature, Release Flow Rates and Air Temperatures with Monthly Averages
2	- Redding 10-Day Forecasted Air Temperatures
3	- Sacramento River Mean Daily Water Temperature, Air Temperature and 10-Day Forecasted Air Temperature Plot - Water Temperature Measuring Station Details - Temperature Control Point Details
4	- Lake Shasta Isothermalbaths Plot - TCD Configuration (External Link)



All Data in this Report is Preliminary and Subject to Change

DATE	Mean Daily Water Temperatures (°F)													Mean Daily Release (CFS)			Mean Daily Air Temperatures (°F)					
	TCD ¹	SHD	SPP ¹	KWK	SAC	CCR ²	BSF	JLF	BND	RDB	IGO	LWS	----- ³	Shasta Generation	Spring Creek P.P.	Keswick Total	RDD	BSF	RDB	LWS		
Mar	49.4	48.8	49.1	49.8	50.2	50.4	52.0	51.9	52.0	52.6	50.5	48.2	-	6043	1206	7445	56.7	54.7	59.6	47.5		
04/01	50.9	49.6	50.3	51.4	52.2	52.8	#	-	55.9	56.1	57.0	52.4	51.2	-	4584	28	4991	61.5	58.7	59.6	57.1	
04/02	50.9	49.5	50.5	51.7	52.5	53.1	#	-	56.7	57.0	58.0	52.8	51.6	-	2167	14	4900	63.5	60.5	62.4	58.2	
04/03	50.8	49.8	50.5	51.6	52.6	53.3	#	-	57.5	57.8	59.0	53.2	51.6	-	5460	219	4919	66.0	62.9	64.7	57.5	
04/04	51.1	50.0	50.4	51.8	52.6	53.2	#	-	57.3	57.8	59.2	52.4	51.7	-	4787	15	4840	64.0	63.0	64.3	54.9	
04/05	52.6	50.9	50.5	51.6	52.4	52.9	#	-	56.4	56.7	58.0	52.3	51.9	-	4678	15	4728	72.0	67.0	69.1	55.1	
04/06	52.3	50.7	50.7	51.9	52.7	53.4	#	-	57.1	57.4	58.4	52.9	52.5	-	5183	28	4587	↑	76.0	67.1	71.2	61.8
04/07	51.7	50.3	50.7	52.8	53.7	54.2	#	-	58.0	58.3	59.6	53.2	52.9	-	5124	18	4594	↑	72.0	65.7	69.0	63.9
04/08	51.4	50.0	50.7	53.0	53.9	54.5	#	-	58.5	58.9	60.1	53.3	53.5	-	4644	14	4587		66.0	63.9	65.1	63.7
04/09	50.8	49.5	50.2	52.4	52.9	53.4	#	-	57.8	58.3	59.5	52.4	53.3	-	3622	893	4582	63.0	61.0	60.5	58.1	
04/10	51.1	49.5	50.7	52.0	52.5	53.0	#	-	56.1	56.5	57.7	52.6	53.1	-	4799	18	4588	62.5	60.0	60.9	58.3	
04/11	50.9	49.6	50.1	51.3	52.1	52.7	#	-	56.5	56.8	58.0	52.7	53.5	-	3401	1124	4588	65.0	63.3	63.9	58.8	
04/12	51.2	50.0	50.6	51.1	51.5	52.0	#	-	56.4	56.9	58.2	52.8	?	53.7	-	4462	18	4612	61.0	61.1	61.8	57.8
04/13	51.0	49.9	50.8	51.4	52.0	52.5	#	-	55.8	56.0	57.3	52.1	52.5	-	4229	14	4659	58.5	57.6	59.8	51.8	
04/14	50.9	49.8	51.1	51.5	51.5	51.8	#	-	55.0	55.4	56.8	51.4	51.2	-	4694	14	4645	53.5	51.1	52.9	43.7	
04/15	51.7	50.4	51.6	51.6	52.3	52.7	#	-	54.6	54.7	55.5	51.5	52.3	-	4492	14	4648	57.5	54.5	57.7	48.9	
04/16	52.4	50.9	51.9	51.7	52.5	53.2	#	-	56.2	56.4	57.2	52.4	52.8	-	4442	14	4644	↑	67.5	61.3	64.3	55.8
04/17	52.3	50.5	52.2	52.1	52.9	53.7	#	-	57.4	57.8	58.8	53.0	53.0	-	4760	14	4647	↑	69.5	64.5	68.0	60.1
04/18	52.3	51.4	52.4	52.7	53.7	54.3	#	-	58.4	58.8	60.1	53.2	53.4	-	4887	14	4648	70.0	64.9	67.2	61.9	
04/19	?	52.4	50.9	52.7	53.2	54.0	54.6	#	-	59.2	59.7	61.0	53.5	53.9	-	4468	0	4648	71.5	66.0	68.5	62.0
04/20	?	52.1	50.5	52.8	53.2	54.1	54.9	#	-	59.5	60.0	61.3	53.4	54.3	-	4598	14	4650	69.5	65.2	65.8	61.0
04/21	51.5	50.6	53.0	53.2	53.8	54.4	#	-	58.6	59.2	60.6	52.2	52.6	-	4025	14	4667	63.5	61.2	63.0	54.2	
04/22	51.9	?	51.0	53.2	53.0	53.0	53.3	#	-	57.1	57.7	58.8	51.9	53.0	-	4535	14	4669	54.5	55.2	55.8	49.7
04/23	52.3	51.3	53.2	52.0	53.0	53.8	#	-	56.1	56.2	57.0	51.8	53.0	-	4982	14	4667	57.5	55.6	56.4	51.0	
04/24	52.3	50.7	52.8	52.5	53.1	53.7	#	-	57.2	57.6	58.6	52.2	52.3	-	4781	14	4669	60.0	59.0	60.4	50.8	
04/25	53.5	52.0	52.5	52.7	53.2	53.7	#	-	56.4	56.7	57.7	51.8	51.8	-	4818	14	4669	58.0	56.0	57.6	46.4	
04/26	53.2	51.7	52.7	52.8	53.2	53.5	#	-	56.1	56.4	57.3	51.4	51.2	-	4708	14	4589	61.5	58.2	59.6	49.1	
04/27	52.6	51.5	52.9	53.6	54.0	54.5	#	-	56.3	56.6	57.2	52.0	50.3	-	4508	14	4689	59.0	57.5	58.1	48.6	
04/28	53.0	51.6	53.1	53.6	54.5	55.1	#	-	57.7	57.8	58.4	52.8	49.1	-	4550	14	4717	67.0	63.0	64.5	53.4	
04/29	53.5	52.0	53.4	53.7	54.4	55.1	#	-	58.7	59.2	60.2	53.2	48.9	-	4381	14	4743	69.5	62.8	65.4	54.7	
04/30	53.9	52.6	53.6	54.0	54.7	55.2	#	-	58.4	58.8	59.8	53.0	49.4	-	4757	14	4743	69.5	65.3	67.5	54.8	
-																						
Apr	51.9	50.6	51.7	52.4	53.1	53.6	-	57.1	57.5	58.5	52.5	52.2	-	4518	88	4684	64.3	61.1	62.8	55.4		

Total CFS	135526	2642	140527
Total AF	268810	5240	278730

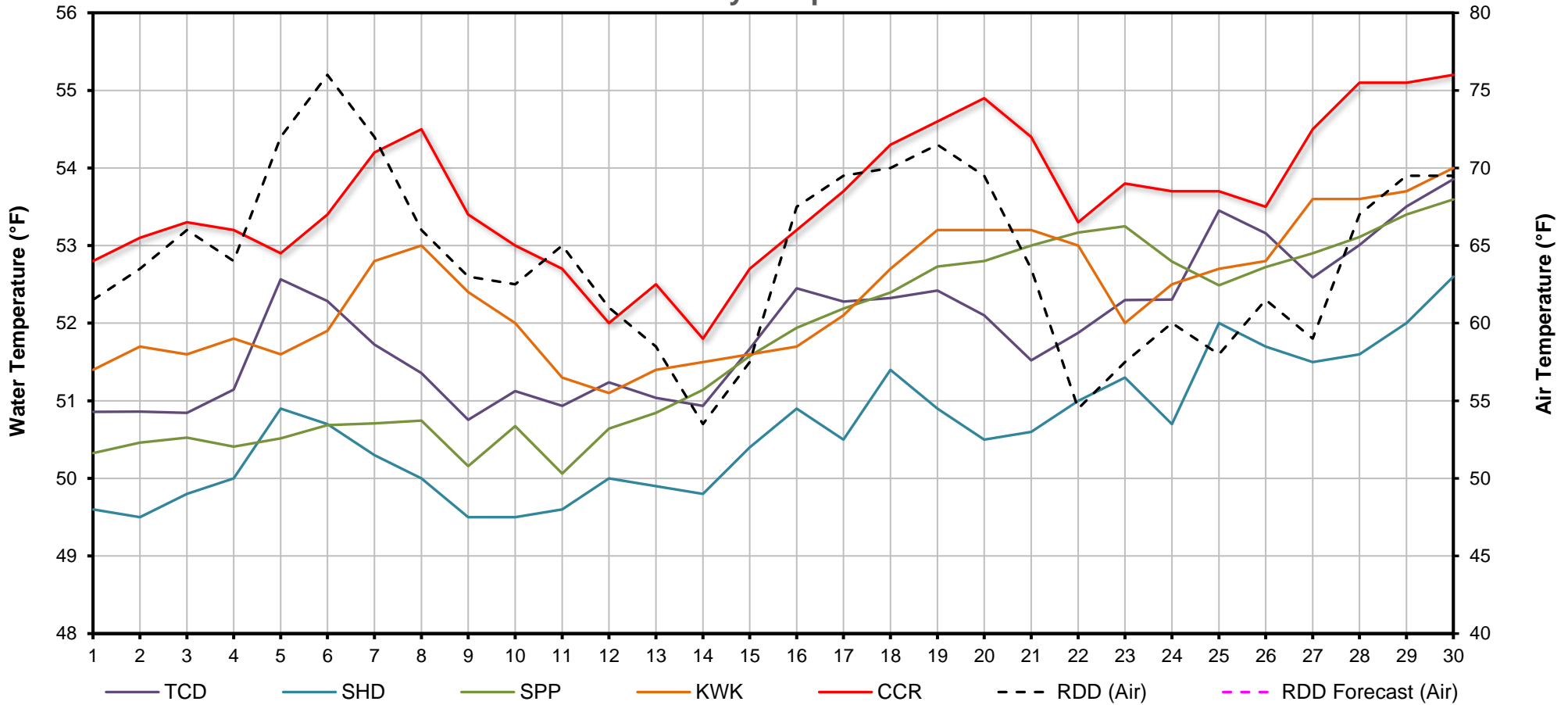
Legend

- ? = 1-9 hours of data missing (Average includes estimations)
- ! = 10 or more hours of data missing (Average not calculated)
- # = Station out of service
- ↑ = Record high air temperature
- ↓ = Record low air temperature
- ☐ = Monthly Averages

Notes

- ¹ Temperatures are weighted averages based on individual penstock flow and temperature
- ² Current control point (see page 3 for more details)
- ³ Column not used this month

Mean Daily Temperatures



Station Details			
Code	Body of Water	Location ¹	CDEC Link
TCD	N/A	Shasta Power Plant	N/A
SHD	Sacramento River	0.3 miles downstream of Shasta Power Plant	Click Here
SPP	N/A	Spring Creek Power Plant	N/A
KWK	Sacramento River	0.8 miles downstream of Keswick Dam	Click Here
SAC	Sacramento River	4.8 miles downstream of Keswick Dam	Click Here
CCR	Sacramento River	9.7 miles downstream of Keswick Dam	Click Here
BSF	Sacramento River	25 miles downstream of Keswick Dam	Click Here
JLF	Sacramento River	34 miles downstream of Keswick Dam	Click Here
BND	Sacramento River	41 miles downstream of Keswick Dam	Click Here
RDB	Sacramento River	58 miles downstream of Keswick Dam	Click Here
IGO	Clear Creek	7.3 miles downstream of Whiskeytown Dam	Click Here
LWS	Trinity River	1.1 miles downstream of Lewiston Dam	Click Here
DGC ²	Trinity River	19 miles downstream of Lewiston Dam	Click Here
NFH ³	Trinity River	38 miles downstream of Lewiston Dam	Click Here

Temperature Control Point		
Point	Temp. (°F)	Date Range
CCR	58.0	04/01/16 - Present

Notes

- ¹ Distances are approximate
- ² DGC is only reported in September
- ³ NFH is only reported in October, November and December

