

Northern CVP Water Temperature Report

March - 2026

Page	Description
2	- Mean Daily Water Temperature, Release Flow Rates and Air Temperatures with Monthly Averages
3	- Sacramento River Mean Daily Water Temperature Plot
4	- Trinity River Mean Daily Water Temperature Plot
5	- Shasta Lake Isothermobaths & Cold Water Pool Statistics
14	- Trinity Lake Isothermobaths & Cold Water Pool Statistics
23	- Whiskeytown Lake Isothermobaths & Cold Water Pool Statistics
x	- TCD Configuration (External Link)



— BUREAU OF —
RECLAMATION

All Data in this Report is Preliminary and Subject to Change

DATE	Mean Daily Water Temperatures (°F)													Mean Daily Release (CFS)			Mean Daily Air Temperatures (°F)		
	TCD ¹	SHD	SPP ¹	KWK	SAC	CCR ²	BSF	BND	RDB	IGO	LWS	DGC	NFH	Shasta Generation	Spring Creek P.P.	Keswick Total	RDD	BSF	RDB
Feb	50.9	50.3	49.9	50.3	50.5	50.6	50.7	50.8	51.0	48.8	45.6	45.5	45.7	6787	1105	8042	51.2	49.8	52.1
03/01	50.0	49.5	49.5	50.1	50.8	51.2	53.6	54.7	55.2	51.1	47.7	49.5	49.9	3203	1855	5251	61.0	58.8	59.9
03/02	50.0	49.5	49.4	49.9	50.8	51.2	53.4	54.4	? 55.0	? 50.5	47.9	49.2	49.5	2764	1872	5091	56.5	56.0	55.0
03/03	50.6	50.1	49.6	49.9	50.7	51.0	52.6	53.6	54.4	49.9	48.1	48.8	49.3	3491	1269	5000	56.5	54.0	57.1
03/04	51.1	50.5	47.4	50.1	50.8	51.2	53.0	53.9	54.3	49.8	48.0	49.2	49.6	2922	1584	4835	58.0	56.2	56.9
03/05	51.4	50.4	50.5	50.2	50.6	50.8	51.9	52.7	53.5	49.0	48.0	47.2	47.9	2484	1336	4628	53.0	52.1	55.3
03/06	51.2	50.3	50.2	50.7	51.1	51.4	52.0	52.3	52.7	49.1	48.1	47.2	47.6	1916	1411	4403	59.0	57.9	59.7
03/07	51.7	? 50.9	50.2	50.8	51.4	52.0	53.1	53.5	53.8	50.0	48.3	48.2	48.6	3463	524	4296	67.5	63.5	65.4
03/08	? 51.3	? 52.1	50.8	51.2	51.9	52.6	54.0	54.7	55.2	? 50.5	48.6	49.6	50.2	2974	836	4090	59.5	57.9	61.1
03/09	51.7	? 51.4	50.7	51.6	52.0	52.7	54.2	55.2	55.9	50.2	48.8	49.7	50.5	3544	575	4039	59.5	57.7	60.0
03/10	51.8	51.2	51.2	51.7	52.1	52.8	54.2	55.0	55.7	50.0	49.1	49.3	49.6	4027	628	4130	57.0	55.5	59.9
03/11	51.8	51.0	51.0	51.5	52.0	52.6	53.6	54.3	55.1	49.8	49.5	48.4	48.8	3035	852	4052	57.0	54.1	57.6
03/12	52.0	51.0	50.6	51.5	52.1	52.8	54.0	54.7	55.3	49.9	49.4	49.3	49.4	3375	1222	3839	60.0	57.1	59.8
03/13	51.7	51.0	50.9	51.4	52.1	52.7	54.1	? 55.0	55.7	50.3	49.0	49.6	50.0	2821	1251	4033	60.0	57.8	59.9
03/14	51.6	50.4	51.0	51.5	52.3	53.0	54.8	#	56.4	50.8	49.0	50.5	51.1	2371	1135	3911	62.0	61.5	64.5
03/15	52.4	51.7	50.7	52.1	52.6	53.3	54.9	#	57.0	50.8	49.1	50.9	51.7	3579	884	4053	70.5	62.9	66.5
03/16	51.6	51.1	50.8	52.0	52.8	53.8	55.6	#	57.4	51.2	49.2	51.3	52.1	3042	1192	4145	73.5	65.7	70.8
03/17	51.7	50.4	50.9	52.0	52.9	53.7	55.8	#	58.2	51.6	49.2	51.8	52.6	2657	1281	4143	67.0	63.1	67.3
03/18	52.1	50.9	50.8	52.2	53.0	53.8	56.1	#	58.9	51.6	49.3	52.3	53.1	2982	4124	4146	67.5	65.0	68.8
03/19	51.7	51.1	50.8	52.1	53.0	54.0	56.5	#	59.4	51.8	49.2	52.6	53.5	3001	690	4174	↑ 70.0	66.8	70.4
03/20	52.9	52.0	51.0	52.5	53.2	54.1	56.5	!	59.7	51.9	49.3	52.5	53.4	3809	852	4187	↑ 72.5	66.4	70.1
03/21	52.1	51.4	50.9	52.7	53.4	54.4	57.0	58.7	60.0	51.9	49.6	51.9	53.5	3344	832	4190	68.5	66.4	70.2
03/22	52.9	52.0	50.8	52.9	53.5	54.3	56.6	58.3	59.7	51.7	49.5	51.8	53.1	3670	520	4185	70.0	67.7	69.5
03/23	52.0	51.6	51.0	52.9	53.6	54.5	56.6	58.2	59.5	51.5	49.6	52.1	53.1	3232	519	4187	63.5	62.6	66.1
03/24	52.0	51.4	51.2	52.9	53.8	54.8	57.0	58.4	59.7	51.8	49.6	53.7	54.8	3376	660	4186	66.0	64.0	67.1
03/25	53.0	51.7	51.7	53.1	53.7	54.5	56.9	58.6	60.0	51.6	49.8	54.0	55.0	3614	537	4187	65.5	63.0	66.7
03/26	54.0	52.9	51.1	53.2	53.8	54.3	56.1	57.6	59.0	51.0	49.9	52.6	53.7	3574	491	4137	67.0	63.5	65.5
03/27	54.0	53.0	51.1	52.9	53.6	54.4	56.0	56.8	57.9	51.3	50.2	52.0	52.9	3418	547	4187	68.0	60.1	64.7
03/28	53.3	52.5	51.4	53.7	54.0	54.8	56.4	57.4	58.3	51.6	50.2	53.0	53.7	3310	519	4158	↑ 64.5	61.6	66.0
03/29	53.6	55.7	51.2	53.8	54.4	55.2	56.8	57.9	59.1	51.7	50.3	52.8	53.9	3073	313	4161	64.0	61.8	67.3
03/30	54.4	53.5	51.4	53.8	54.1	54.9	56.4	57.7	58.9	51.3	50.5	51.2	52.3	4297	325	4188	64.5	62.1	65.6
03/31	54.4	53.2	51.7	53.6	53.8	54.3	55.9	57.2	58.3	50.9	49.4	51.0	52.0	3852	475	4187	60.0	60.2	61.6
Mar	52.1	51.4	50.7	51.9	52.5	53.2	55.0	55.8	57.0	50.8	49.1	50.7	51.5	3212	1021	4274	63.6	60.8	63.8

Total CFS	100220	31111	132399
Total AF	198782	61707	262608

Legend

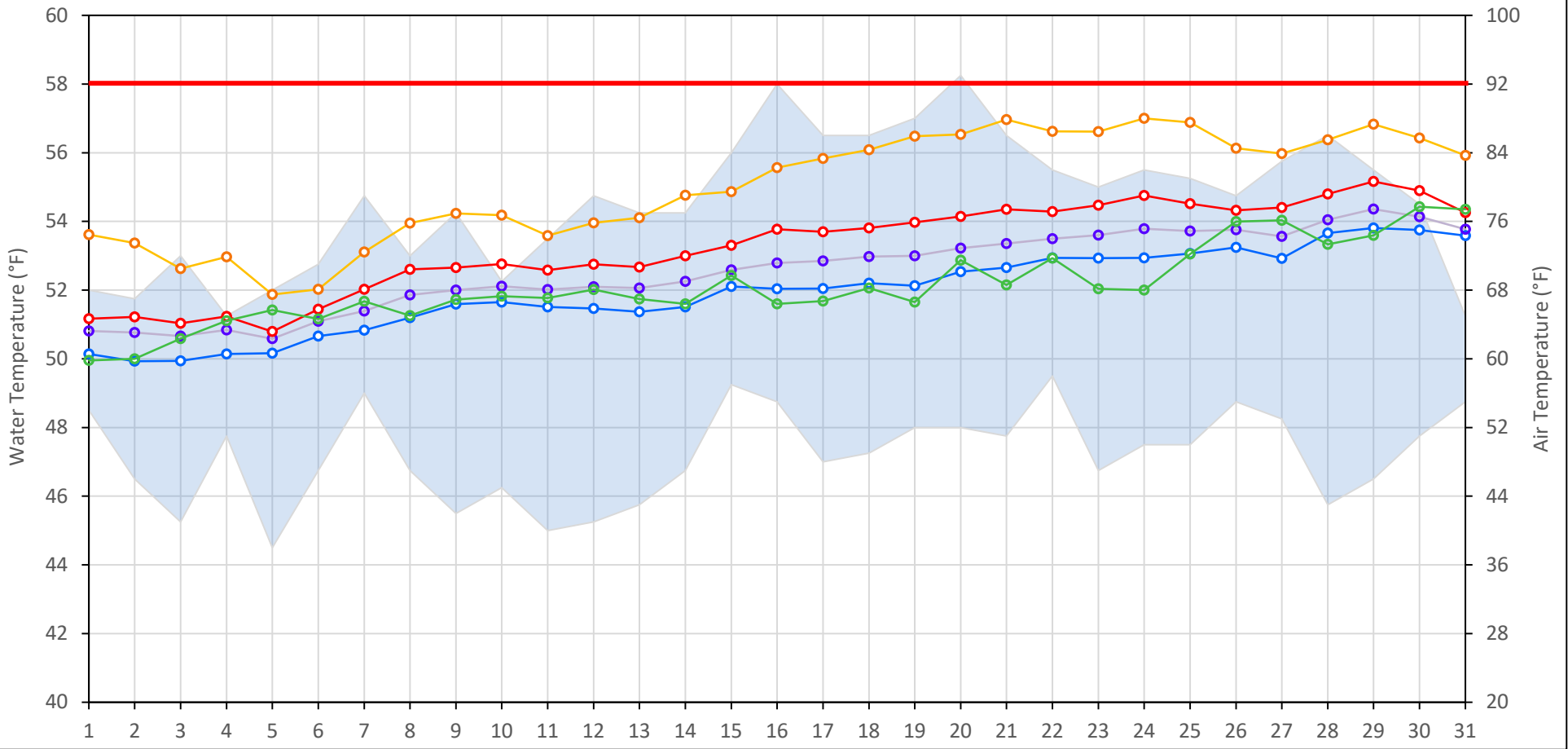
- ? = 1-9 hours of data missing (Average includes estimations)
- ! = 10 or more hours of data missing (Average not calculated)
- # = Station out of service
- ↑ = Record high air temperature
- ↓ = Record low air temperature
- = Monthly Averages

Notes

- ¹ Temperatures are weighted averages based on individual penstock flow and temperature
- Highlighted cells in the TCD column indicate a TCD change was made on that day
- ² Current Clear Creek River control point (see page 3 for more details)

Sacramento River Mean Daily Temperatures

Redding Air (Observed and Forecasted) KWK SAC CCR BSF TCD



Station Details			
Code	Body of Water	Location ¹	CDEC Link
TCD	N/A	Shasta Power Plant	N/A
SHD	Sacramento River	0.3 miles downstream of Shasta Power Plant	Click Here
SPP	N/A	Spring Creek Power Plant	N/A
KWK	Sacramento River	0.8 miles downstream of Keswick Dam	Click Here
SAC	Sacramento River	4.8 miles downstream of Keswick Dam	Click Here
CCR	Sacramento River	9.7 miles downstream of Keswick Dam	Click Here
BSF	Sacramento River	25 miles downstream of Keswick Dam	Click Here
JLF	Sacramento River	34 miles downstream of Keswick Dam	Click Here
BND	Sacramento River	41 miles downstream of Keswick Dam	Click Here
RDB	Sacramento River	58 miles downstream of Keswick Dam	Click Here
IGO	Clear Creek	7.3 miles downstream of Whiskeytown Dam	Click Here

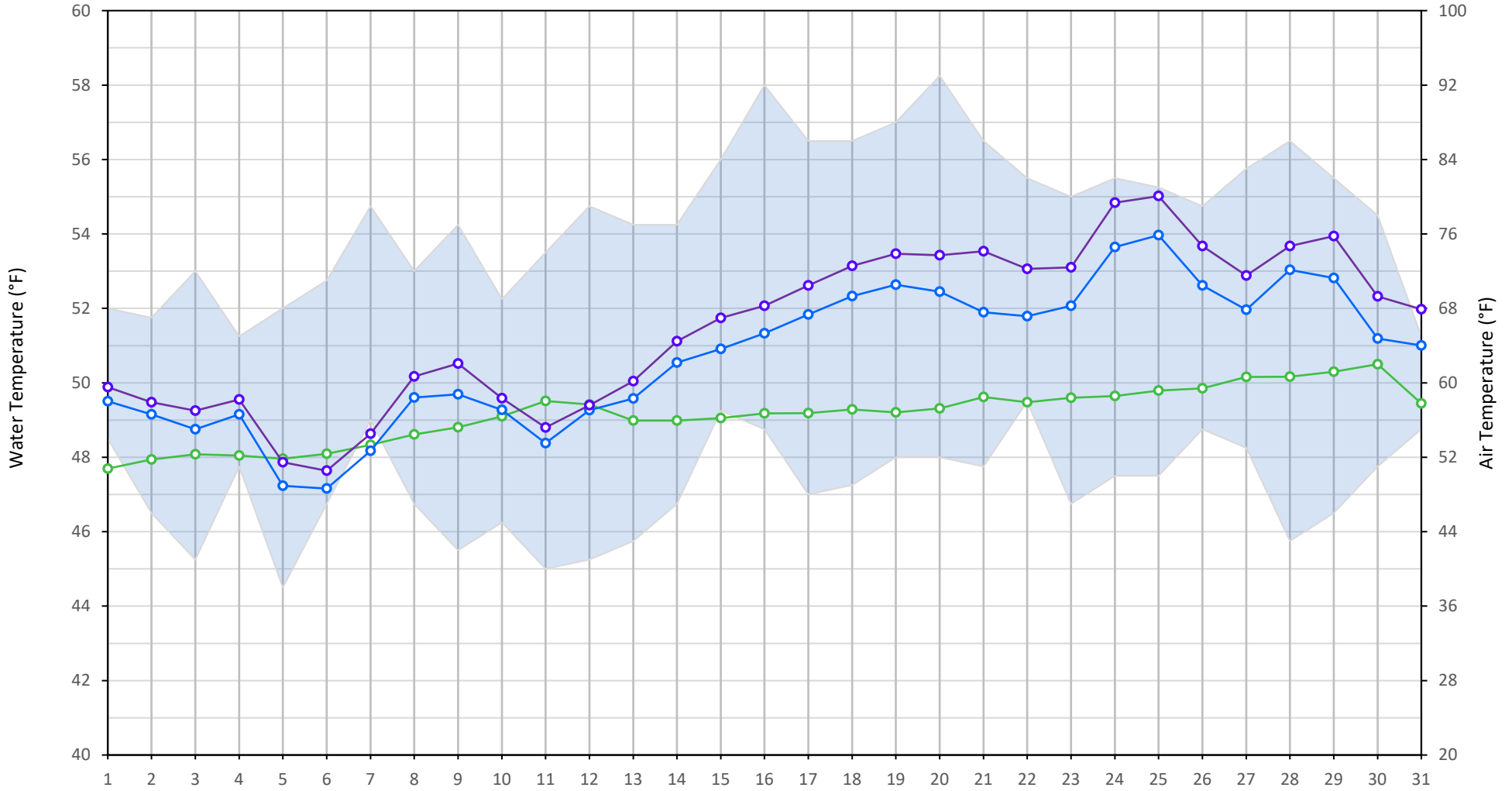
Water Right Temperature Control Points				
River	Point	Temp. (°F)	Begin Date	End Date
Sacramento	CCR	58.0	Mar-01	
Sacramento	CCR	53.5		

Notes

¹ Distances are approximate

Trinity River Mean Daily Temperatures

Redding Air (Observed and Forecasted) LWS DGC NFH



Station Details			
Code	Body of Water	Location ¹	CDEC Link
LWS	Trinity River	1.1 miles downstream of Lewiston Dam	Click Here
DGC	Trinity River	19 miles downstream of Lewiston Dam	Click Here
NFH	Trinity River	38 miles downstream of Lewiston Dam	Click Here

Water Right Temperature Control Points				
River	Point	Temp. (°F)	Begin Date	End Date
Trinity	DGC	56	Sep-15	Oct-01
Trinity	NFH	56	Oct-01	Dec-31

Notes

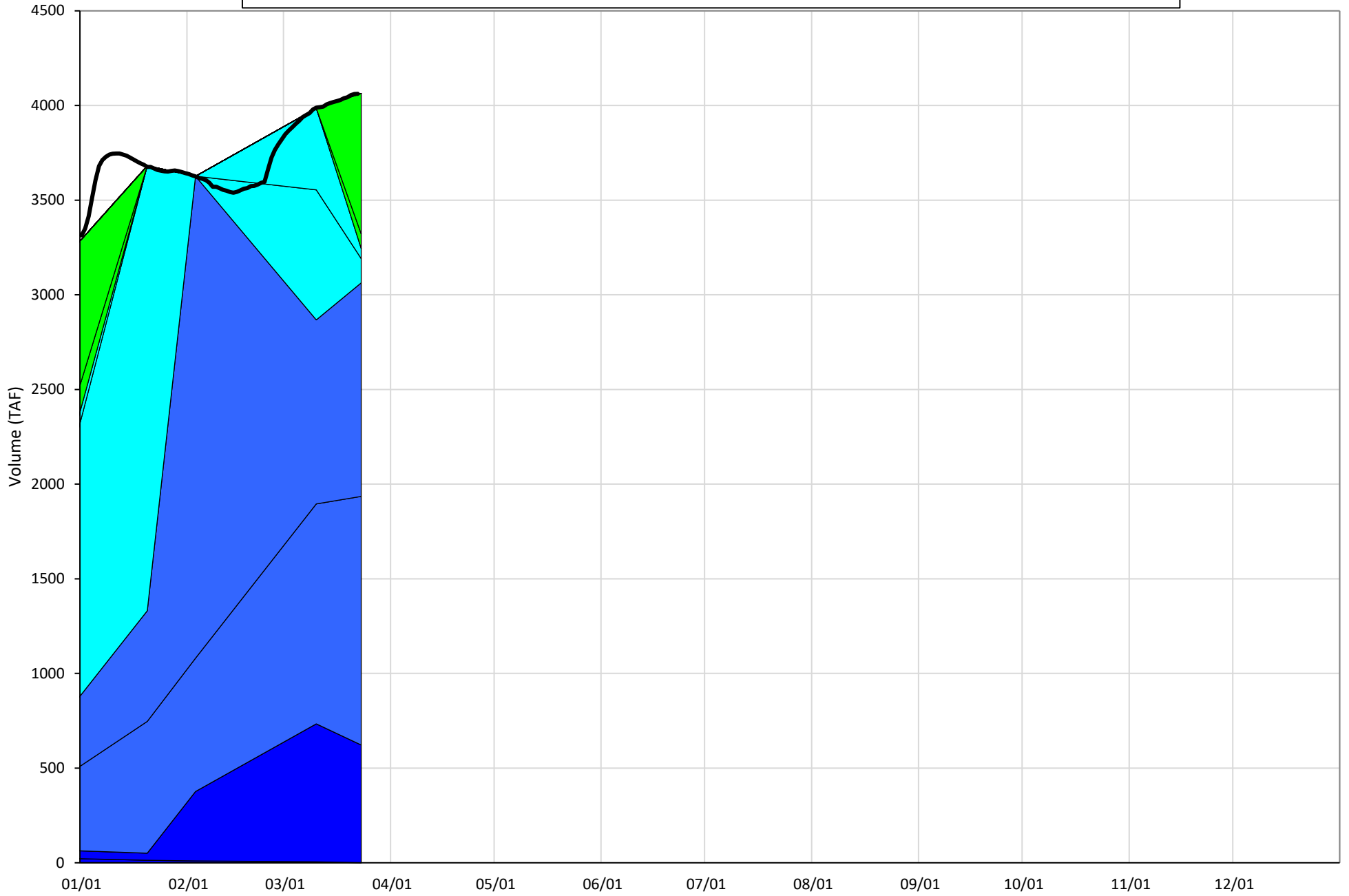
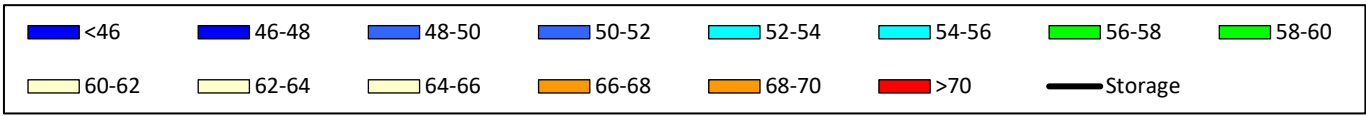
¹ Distances are approximate

Shasta Lake Isothermobaths & Cold Water Pool Statistics

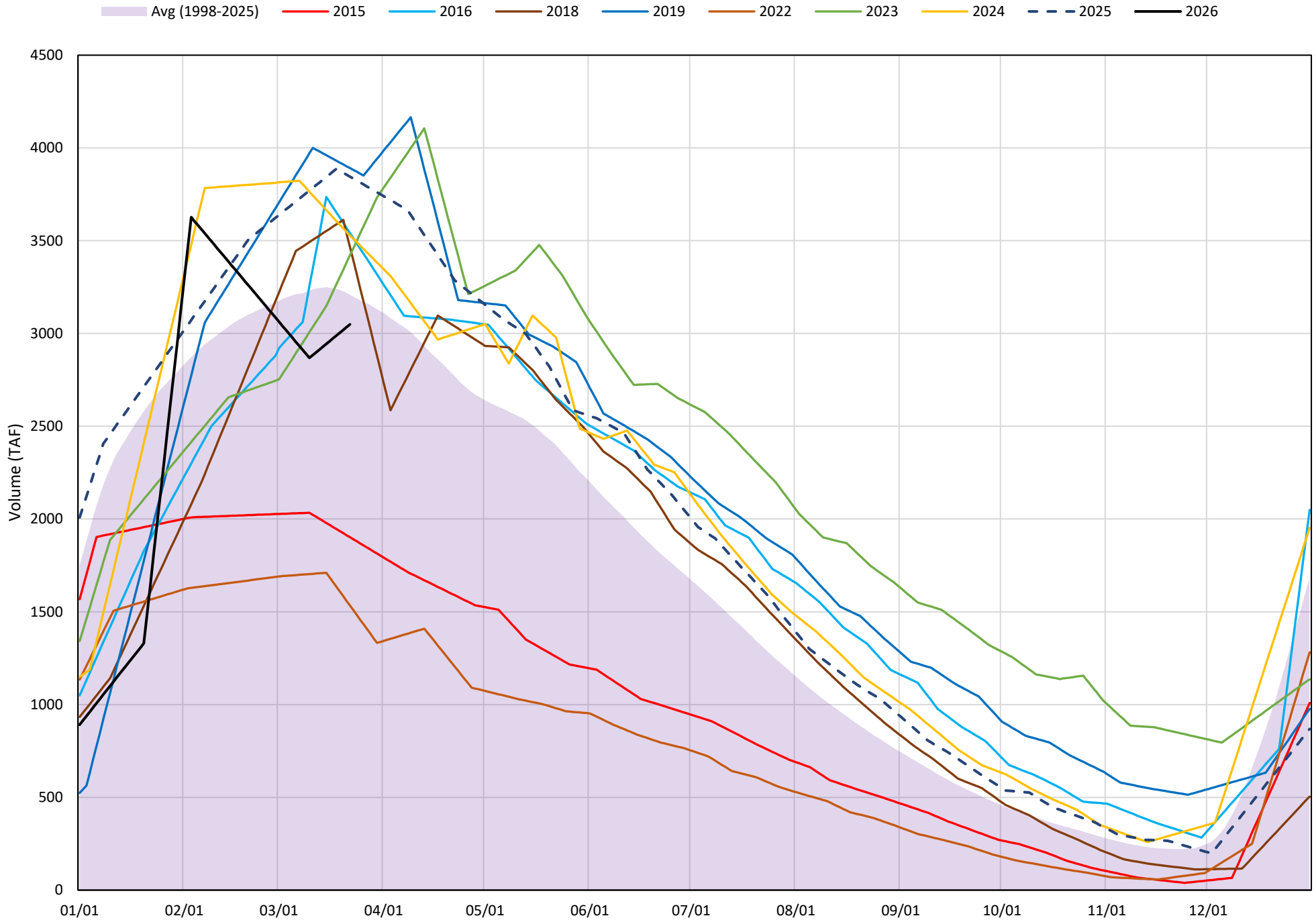
2026

Page	Description
6	- Shasta Lake Isothermobaths Plot
7	- Shasta Lake Cold Water Pool Volume $\leq 52^{\circ}\text{F}$
8	- Shasta Lake Cold Water Pool Volume $\leq 50^{\circ}\text{F}$
9	- Shasta Lake Cold Water Pool Volume $\leq 48^{\circ}\text{F}$
10	- Shasta Lake Cold Water Pool Volume $\leq 52^{\circ}\text{F}$ - Percent Exceedances
11	- Shasta Lake Cold Water Pool Volume $\leq 50^{\circ}\text{F}$ - Percent Exceedances
12	- Shasta Lake Cold Water Pool Volume $\leq 48^{\circ}\text{F}$ - Percent Exceedances
13	- Shasta Lake Cold Water Pool Comparison by Year

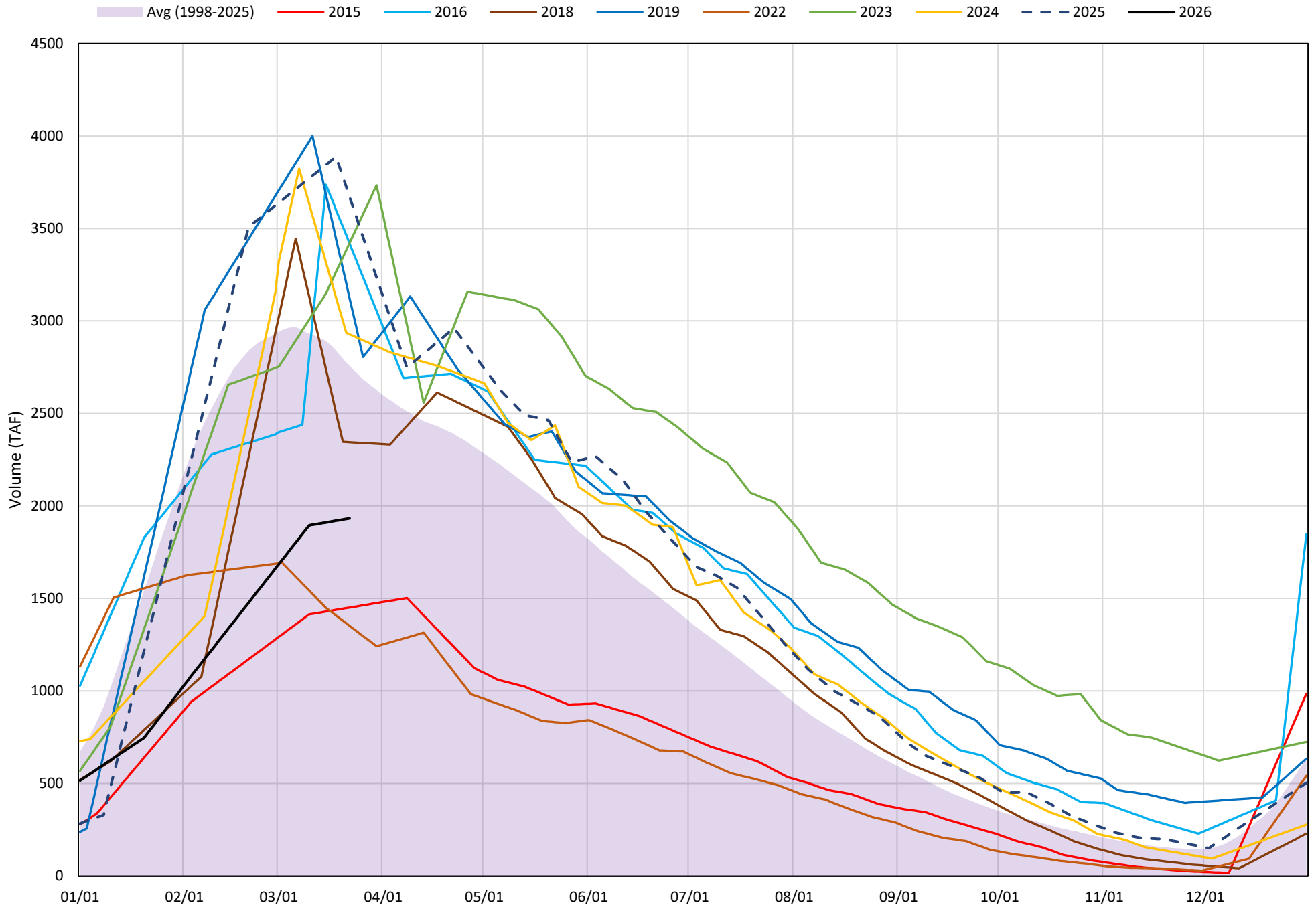
Shasta Lake Isothermobaths Plot - 2026



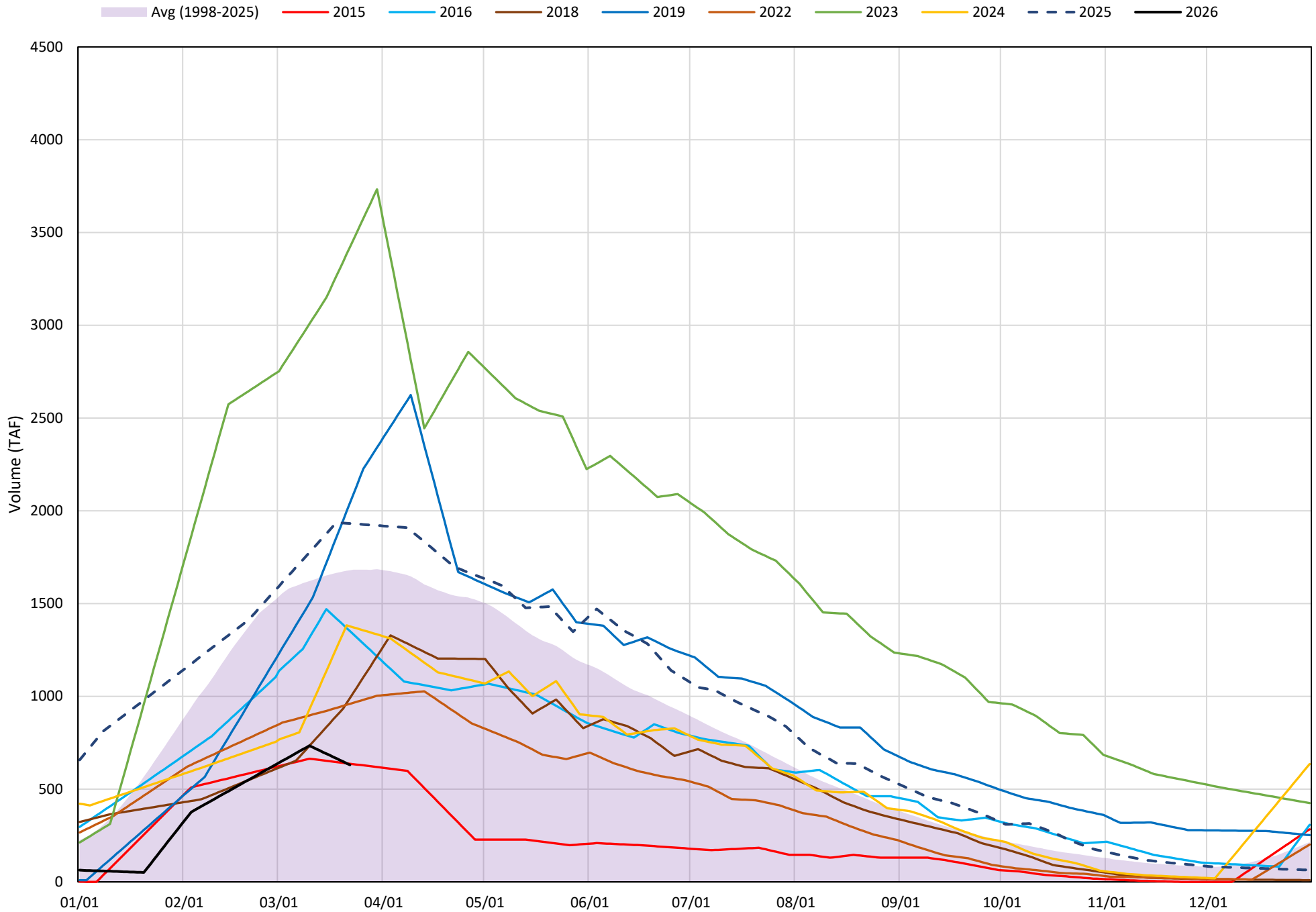
Shasta Lake Cold Water Pool Volume $\leq 52^{\circ}\text{F}$



Shasta Lake Cold Water Pool Volume $\leq 50^{\circ}\text{F}$

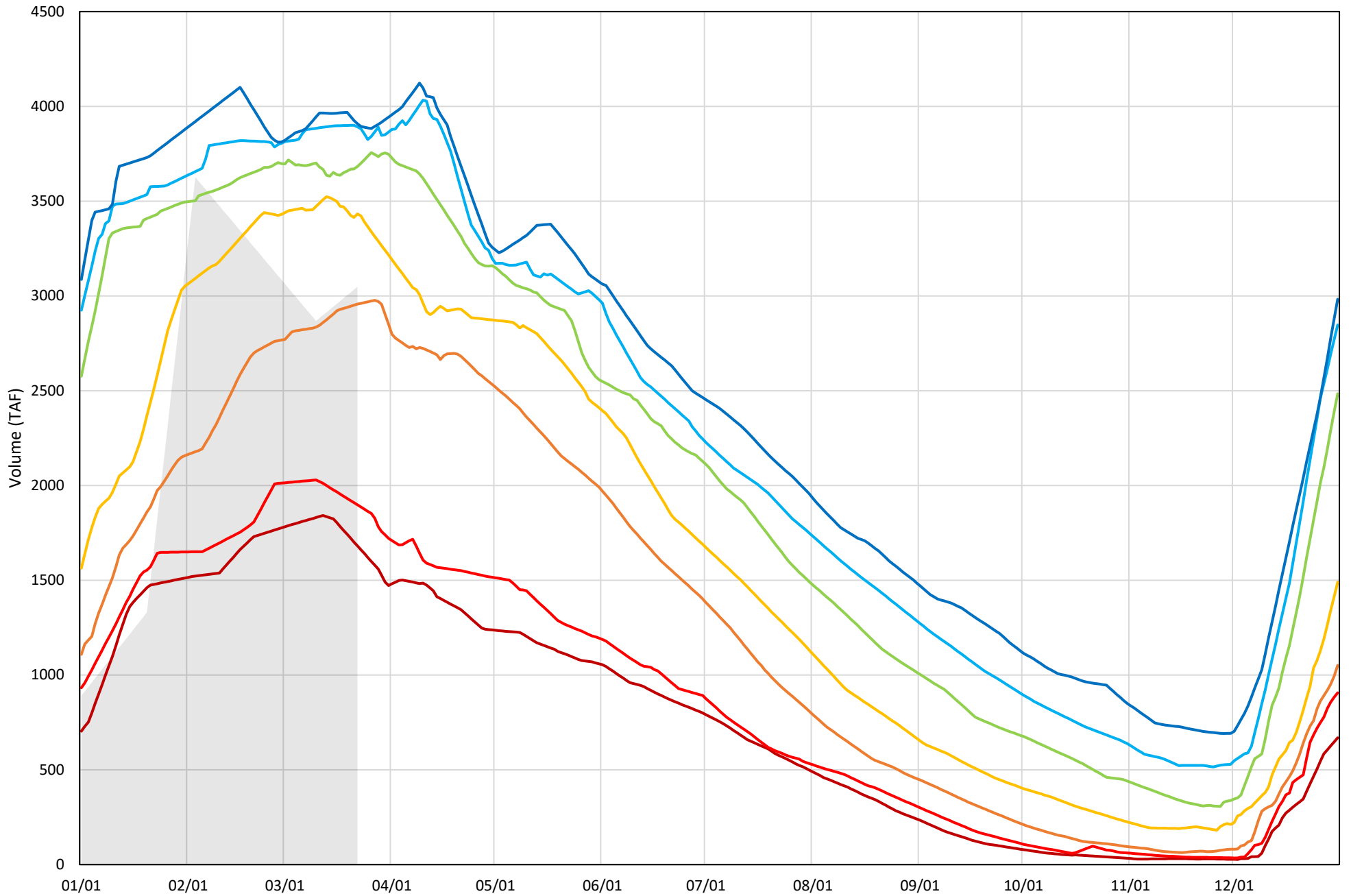


Shasta Lake Cold Water Pool Volume $\leq 48^{\circ}\text{F}$



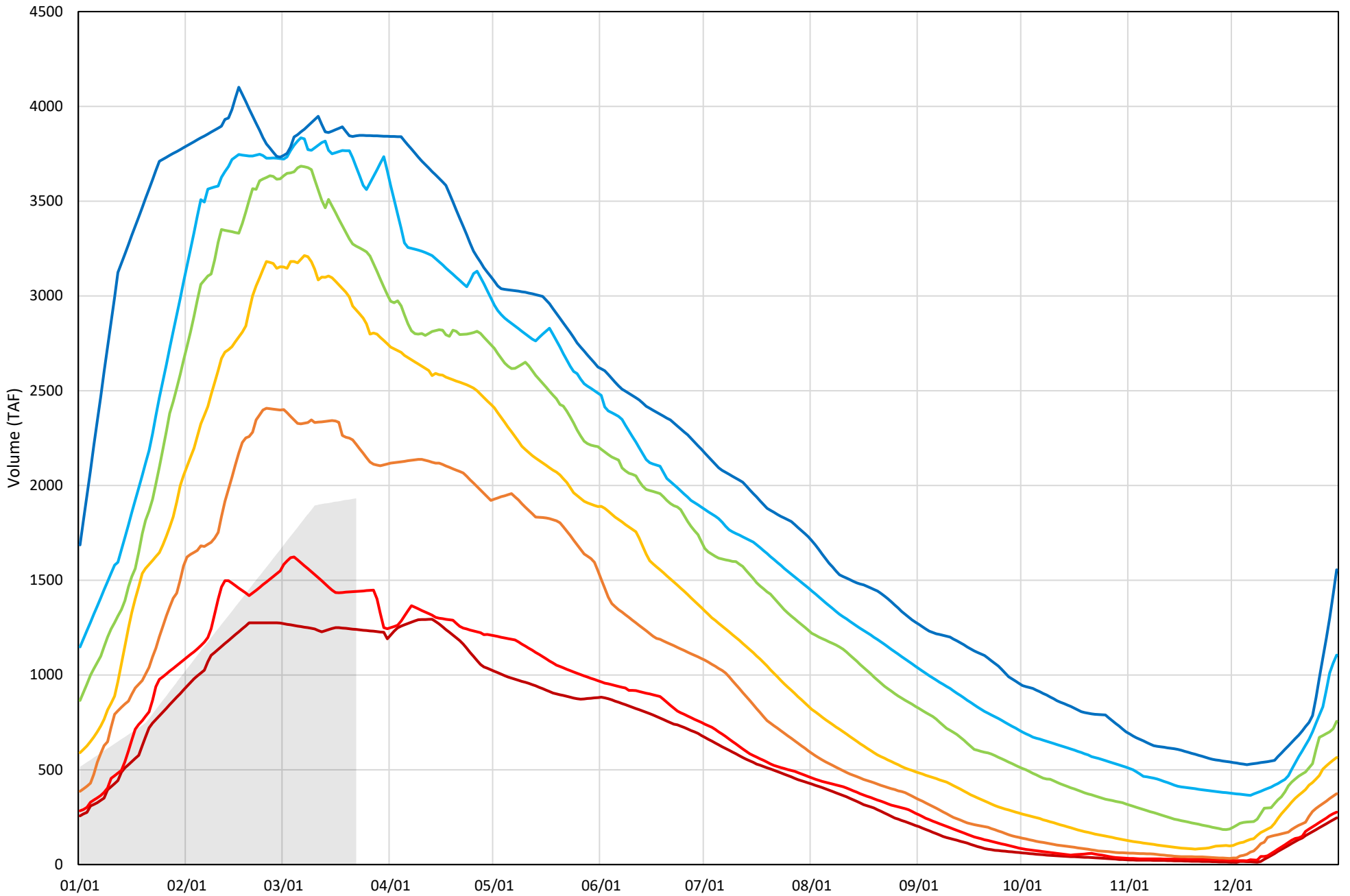
Shasta Lake Cold Water Pool Volume $\leq 52^{\circ}\text{F}$ - Percent Exceedances (1998-2025)

2026 95 90 75 50 25 10 5



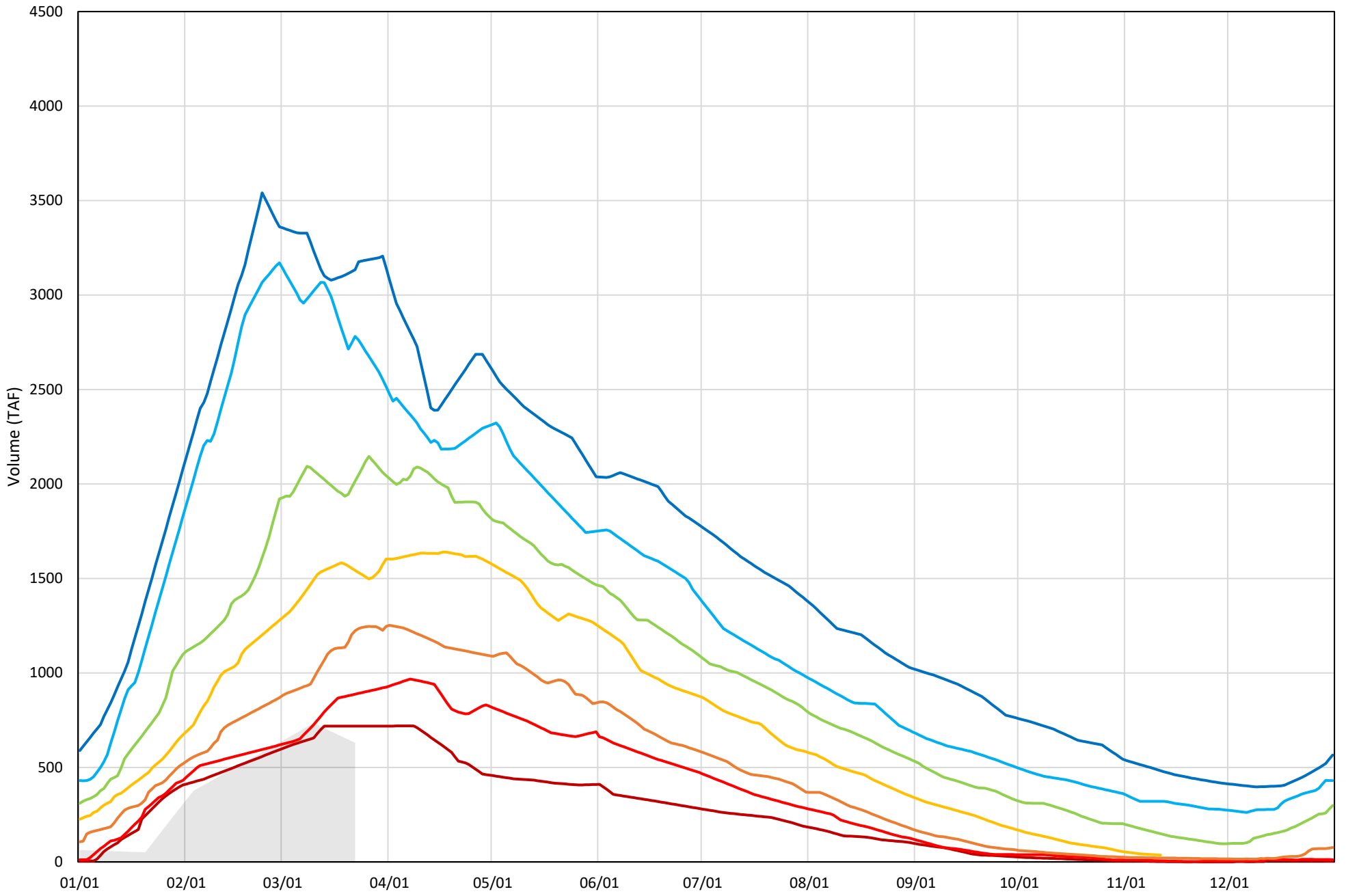
Shasta Lake Cold Water Pool Volume $\leq 50^{\circ}\text{F}$ - Percent Exceedances (1998-2025)

2026 95 90 75 50 25 10 5



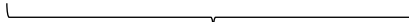
Shasta Lake Cold Water Pool Volume $\leq 48^{\circ}\text{F}$ - Percent Exceedances (1998-2025)

2026 95 90 75 50 25 10 5




Shasta Lake Cold Water Pool Comparison by Year (for Specified Date)

Mar-23 2026	Δ TAF				% Δ			
	≤52°	≤50°	≤48°	Abs. Avg.	≤52°	≤50°	≤48°	Abs. Avg.
1998	396	1188	619	735	13	61	98	58
1999	526	1339	2150	1338	17	69	341	143
2000	234	880	583	565	8	46	92	49
2001	101	908	1689	899	3	47	268	106
2002	865	1648	1246	1253	28	85	198	104
2003	151	488	859	499	5	25	136	55
2004	284	1305	642	743	9	68	102	60
2005	-301	319	679	433	-10	17	108	45
2006	725	1842	2153	1573	24	95	341	154
2007	313	1296	1111	907	10	67	176	84
2008	-156	273	965	465	-5	14	153	57
2009	-790	165	1243	733	-26	9	197	77
2010	670	1030	1283	994	22	53	203	93
2011	853	1969	1700	1507	28	102	270	133
2012	523	1033	711	755	17	53	113	61
2013	304	892	1165	787	10	46	185	80
2014	-1187	-784	188	720	-39	-41	30	36
2015	-1147	-482	6	545	-38	-25	1	21
2016	492	1485	721	899	16	77	114	69
2017	694	991	1953	1213	23	51	310	128
2018	417	412	361	397	14	21	57	31
2019	843	1191	1412	1149	28	62	224	104
2020	511	80	488	360	17	4	77	33
2021	-972	-23	265	420	-32	-1	42	25
2022	-1515	-580	329	808	-50	-30	52	44
2023	373	1489	2791	1551	12	77	443	177
2024	480	995	747	741	16	52	118	62
2025	797	1738	1301	1279	26	90	206	107



Historical - Current



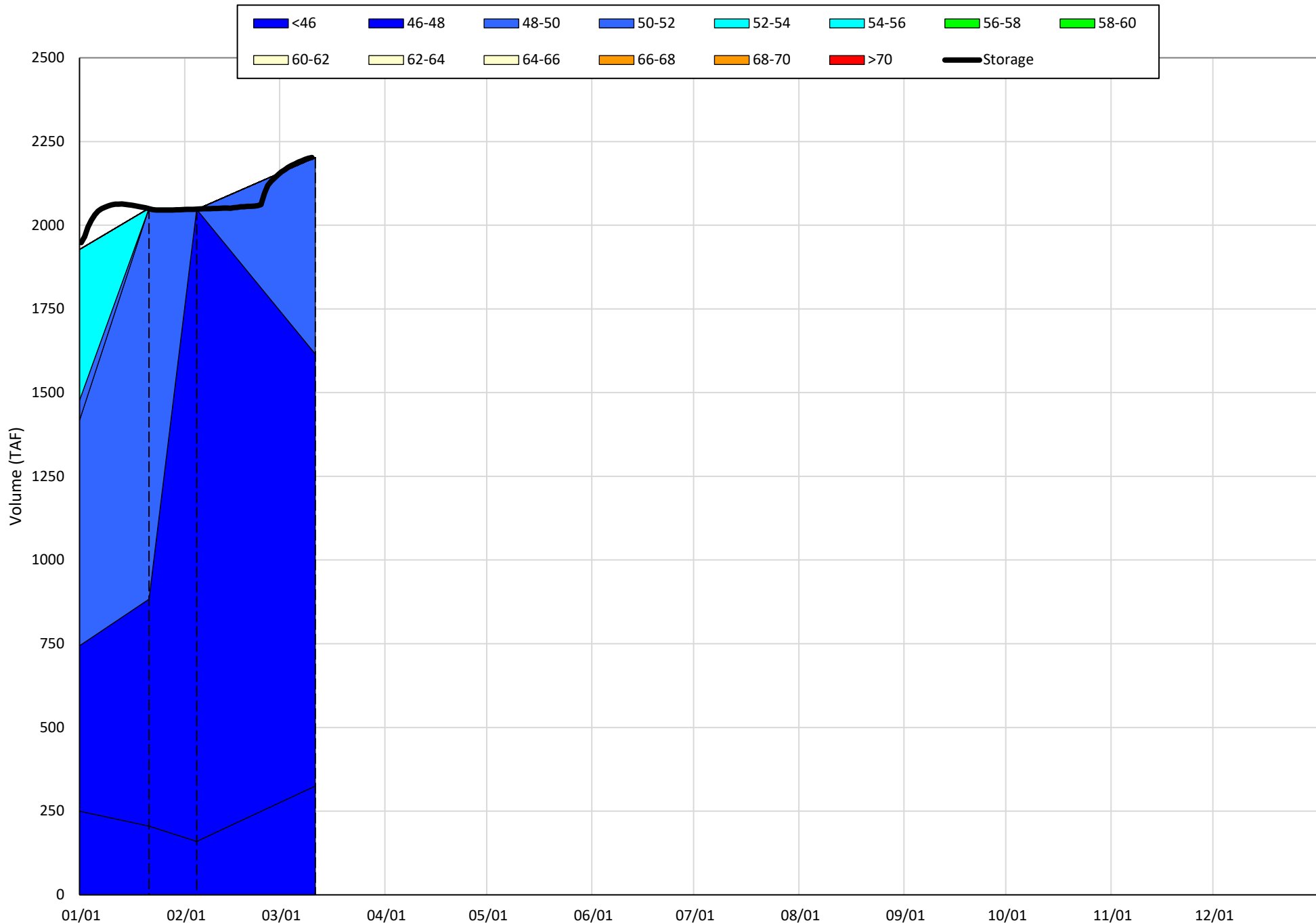
(Historical - Current) / Current

Trinity Lake Isothermobaths & Cold Water Pool Statistics

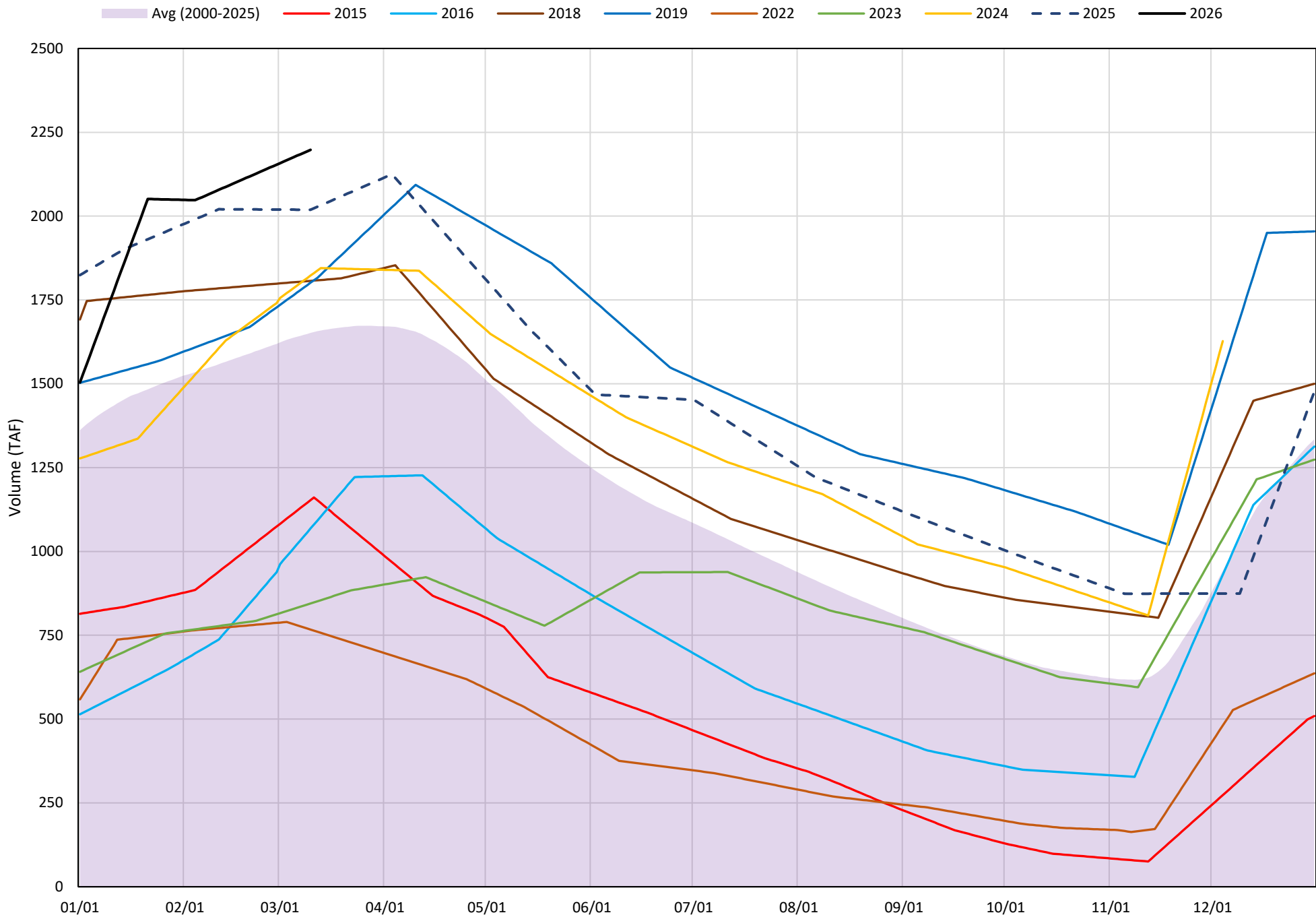
2026

Page	Description
15	- Trinity Lake Isothermobaths Plot
16	- Trinity Lake Cold Water Pool Volume $\leq 52^{\circ}\text{F}$
17	- Trinity Lake Cold Water Pool Volume $\leq 50^{\circ}\text{F}$
18	- Trinity Lake Cold Water Pool Volume $\leq 48^{\circ}\text{F}$
19	- Trinity Lake Cold Water Pool Volume $\leq 52^{\circ}\text{F}$ - Percent Exceedances
20	- Trinity Lake Cold Water Pool Volume $\leq 50^{\circ}\text{F}$ - Percent Exceedances
21	- Trinity Lake Cold Water Pool Volume $\leq 48^{\circ}\text{F}$ - Percent Exceedances
22	- Trinity Lake Cold Water Pool Comparison by Year

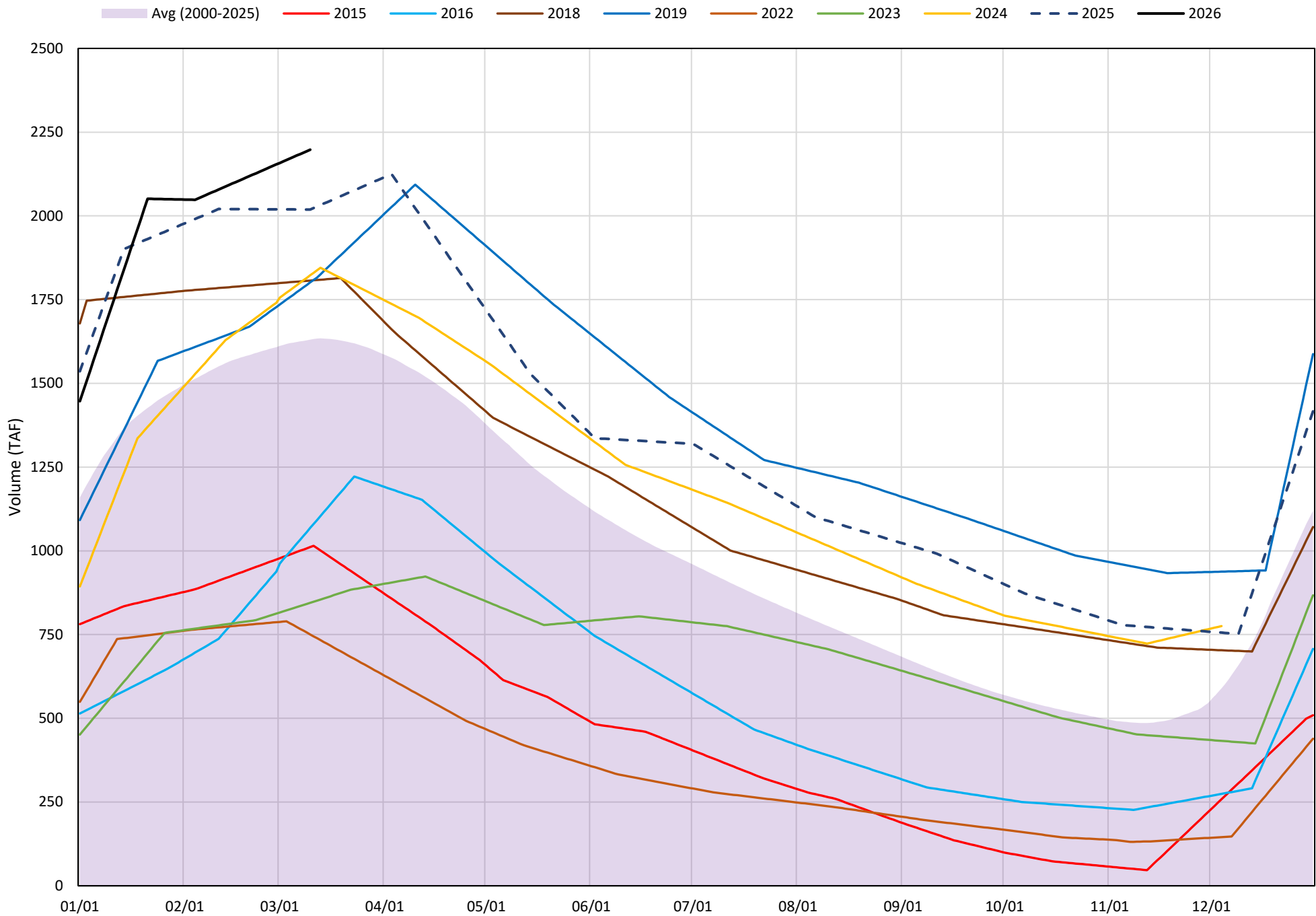
Trinity Lake Isothermobaths Plot - 2026



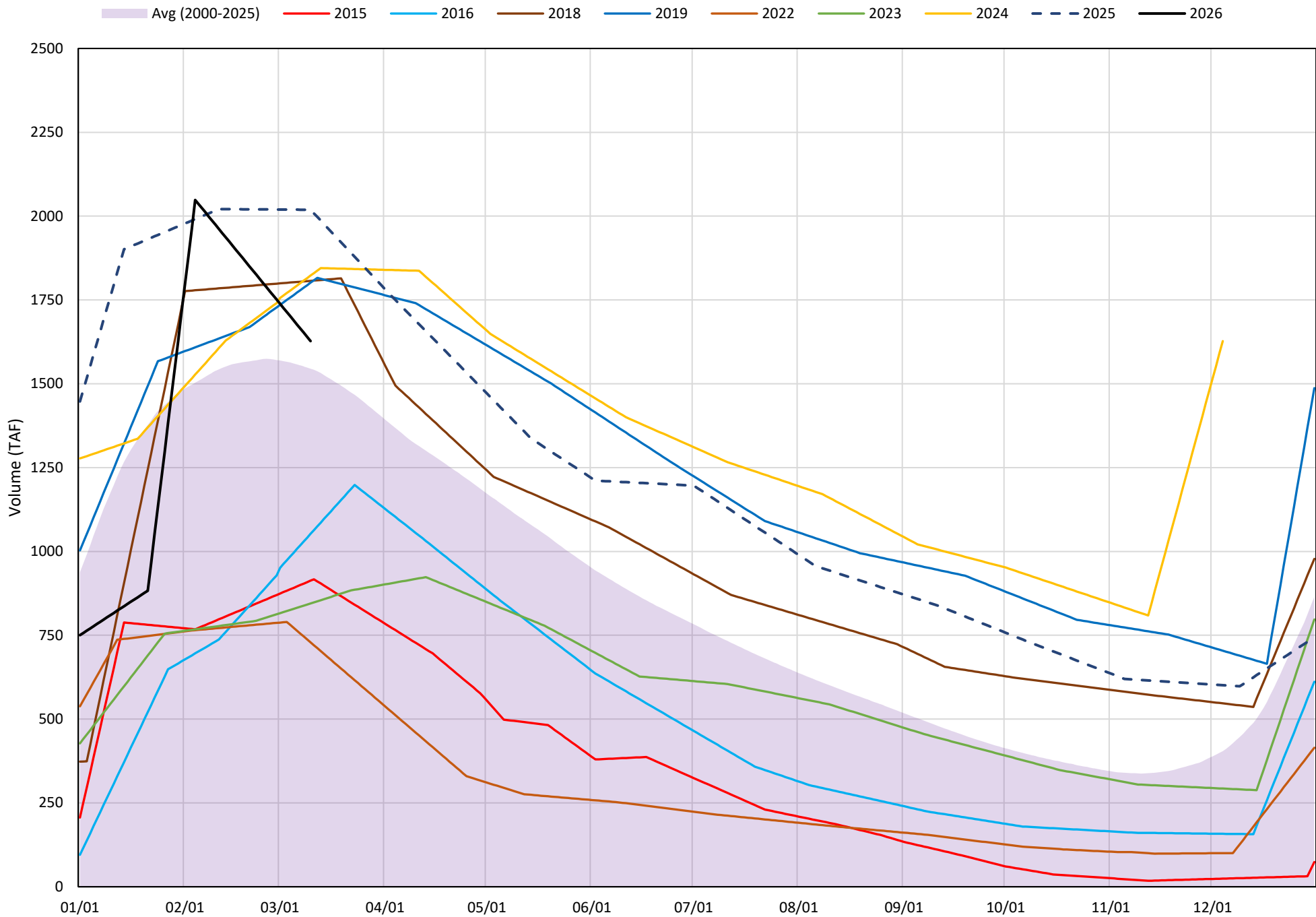
Trinity Lake Cold Water Pool Volume ≤52°F



Trinity Lake Cold Water Pool Volume ≤50°F

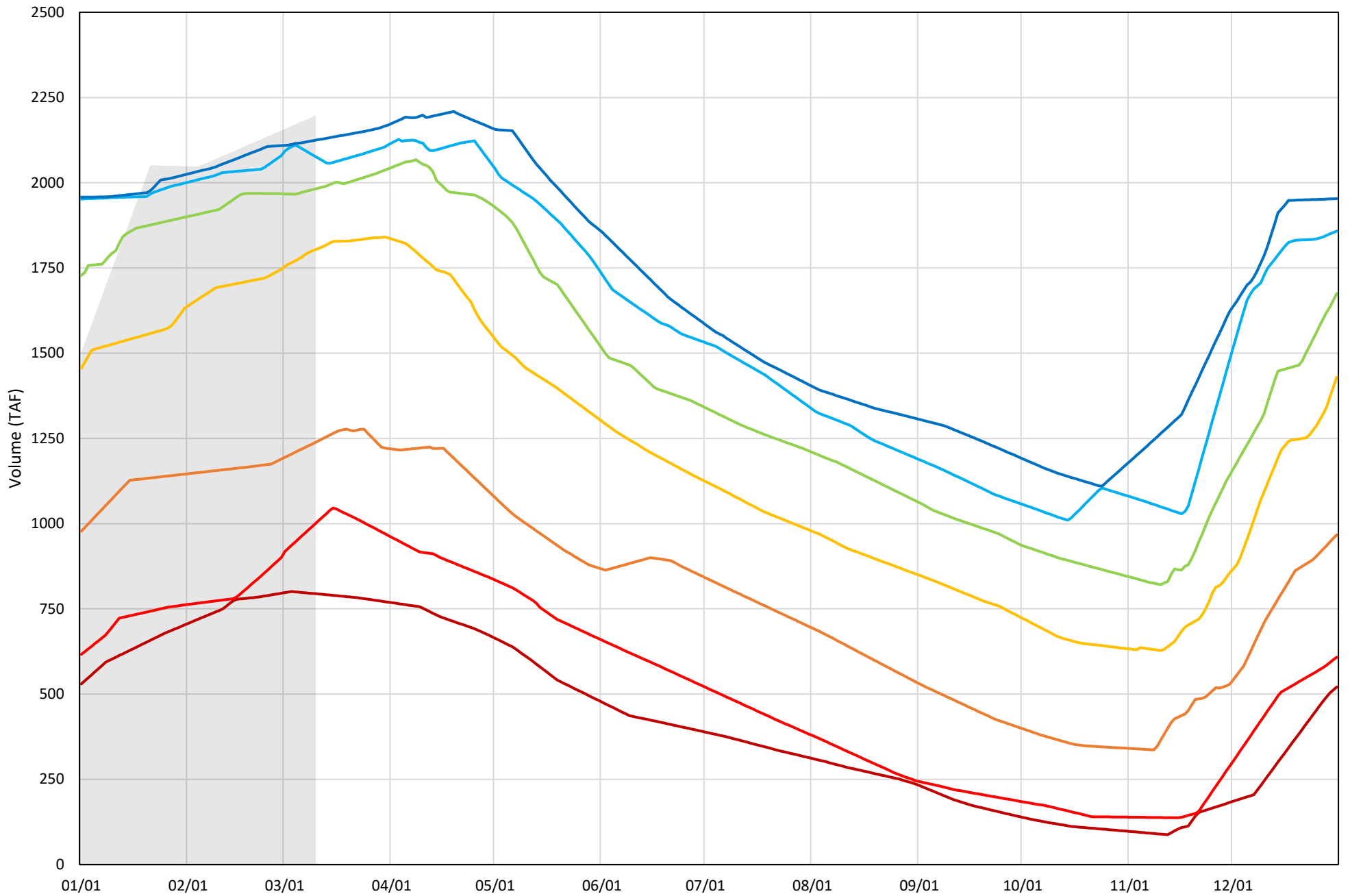


Trinity Lake Cold Water Pool Volume ≤48°F



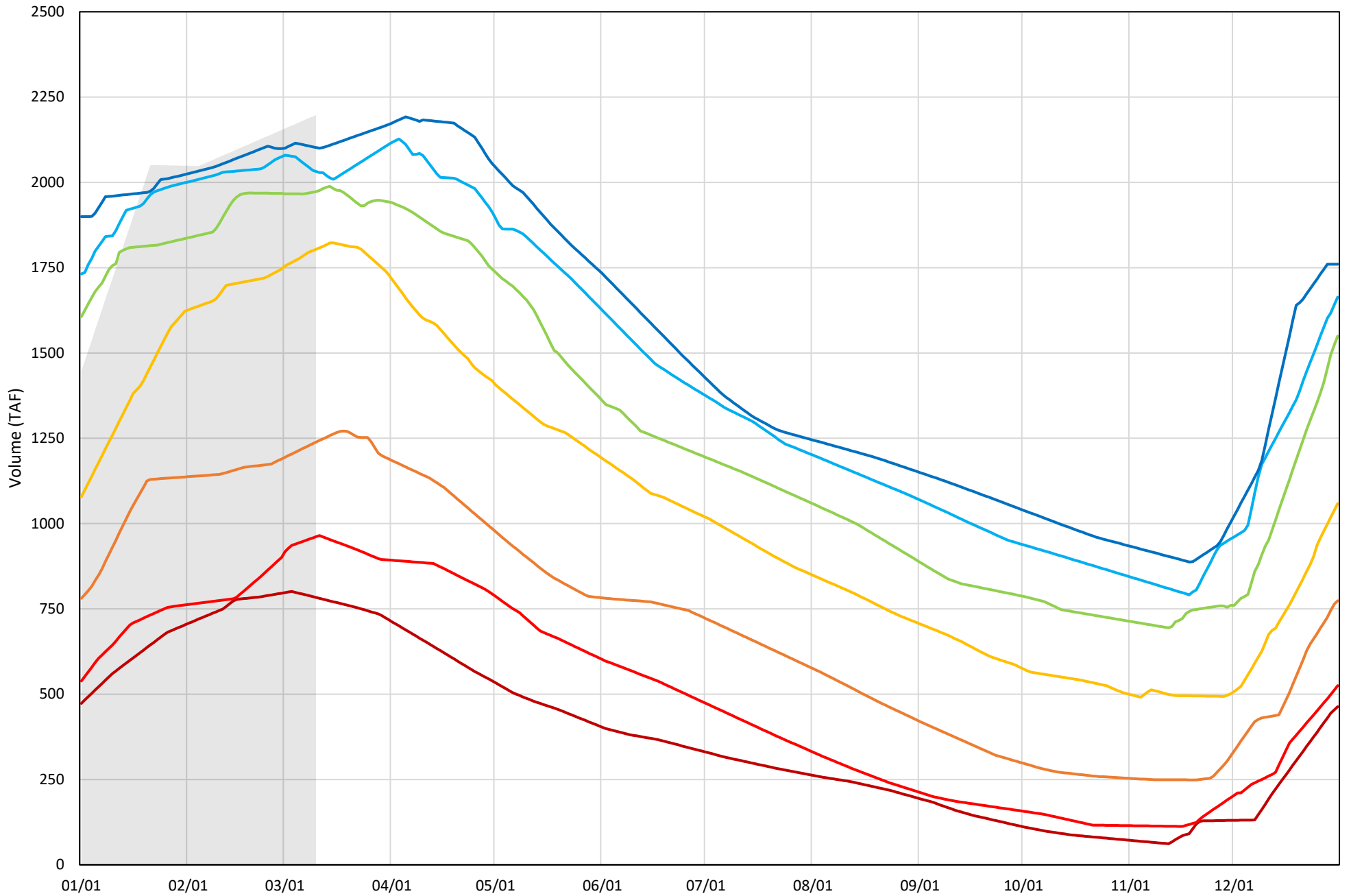
Trinity Lake Cold Water Pool Volume $\leq 52^{\circ}\text{F}$ - Percent Exceedances (2000-2025)

2026 95 90 75 50 25 10 5



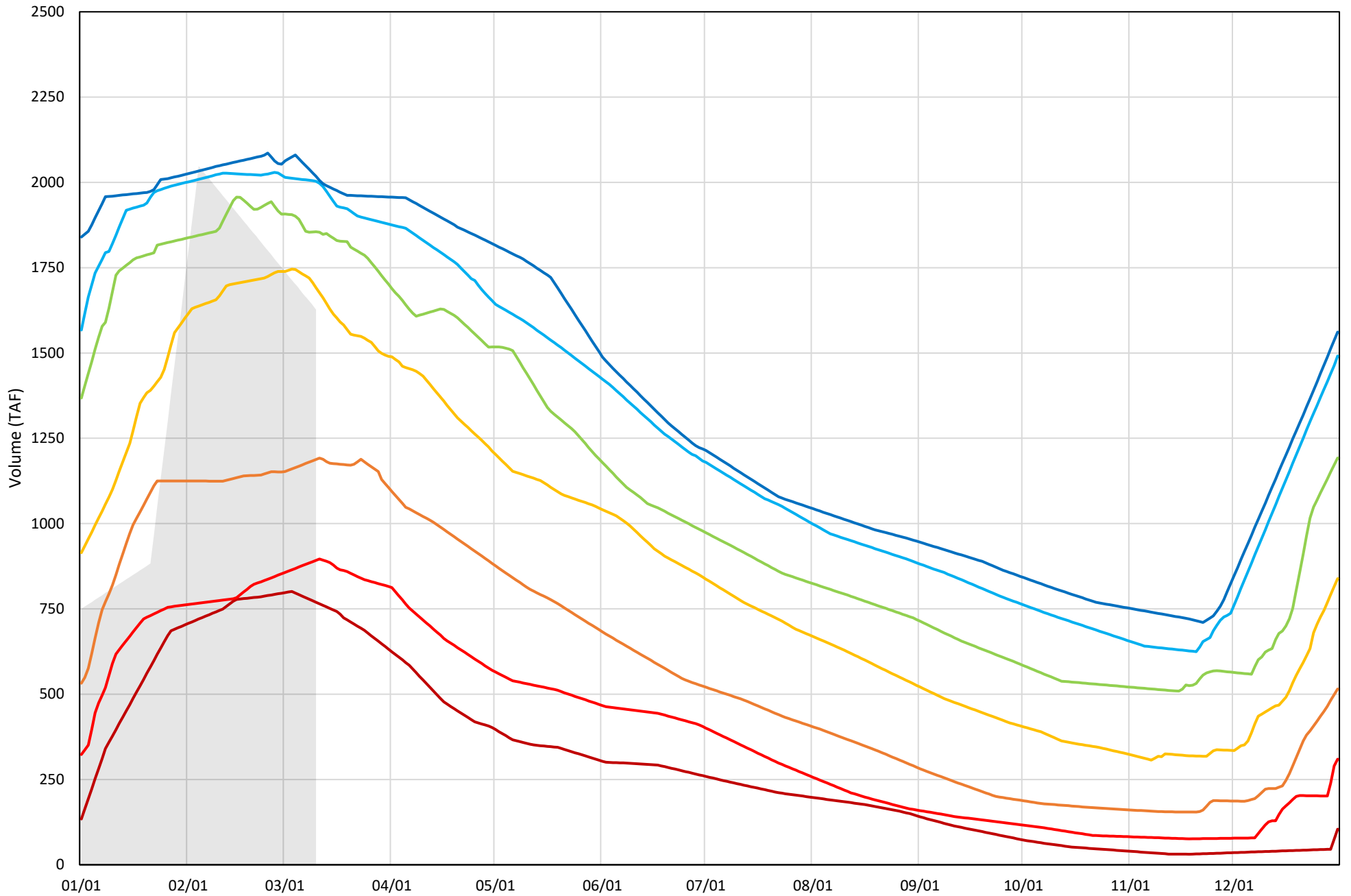
Trinity Lake Cold Water Pool Volume ≤50°F - Percent Exceedances (2000-2025)

2026 95 90 75 50 25 10 5



Trinity Lake Cold Water Pool Volume $\leq 48^{\circ}\text{F}$ - Percent Exceedances (2000-2025)

2026 95 90 75 50 25 10 5



Trinity Cold Water Pool Comparison by Year (for Specified Date)

Feb-04 2026	Δ TAF				% Δ			
	≤52°	≤50°	≤48°	Abs. Avg.	≤52°	≤50°	≤48°	Abs. Avg.
2000	-27	-27	56	37	-1	-1	3	2
2001	-350	-350	-267	322	-17	-17	-14	16
2002	-385	-385	-302	358	-19	-19	-15	18
2003	-260	-260	-198	239	-13	-13	-10	12
2004	-154	-154	-70	126	-7	-8	-4	6
2005	-453	-574	-521	516	-22	-28	-27	26
2006	-12	-12	71	32	-1	-1	4	2
2007	-223	-223	-140	195	-11	-11	-7	10
2008	-614	-614	-530	586	-30	-30	-27	29
2009	-1024	-1025	-941	997	-50	-50	-48	49
2010	-985	-1090	-1025	1034	-48	-53	-52	51
2011	-240	-240	-156	212	-12	-12	-8	10
2012	-82	-321	-283	228	-4	-16	-14	11
2013	-108	-109	-25	81	-5	-5	-1	4
2014	-870	-871	-806	849	-43	-43	-41	42
2015	-1165	-1166	-1196	1176	-57	-57	-61	58
2016	-1358	-1358	-1275	1330	-66	-66	-65	66
2017	-406	-554	-494	485	-20	-27	-25	24
2018	-270	-270	-187	242	-13	-13	-10	12
2019	-443	-443	-360	415	-22	-22	-18	21
2020	-47	-48	36	44	-2	-2	2	2
2021	-789	-789	-706	761	-39	-39	-36	38
2022	-1284	-1284	-1200	1256	-63	-63	-61	62
2023	-1282	-1282	-1198	1254	-63	-63	-61	62
2024	-532	-532	-448	504	-26	-26	-23	25
2025	-61	-62	22	48	-3	-3	1	2

}

Historical - Current

}

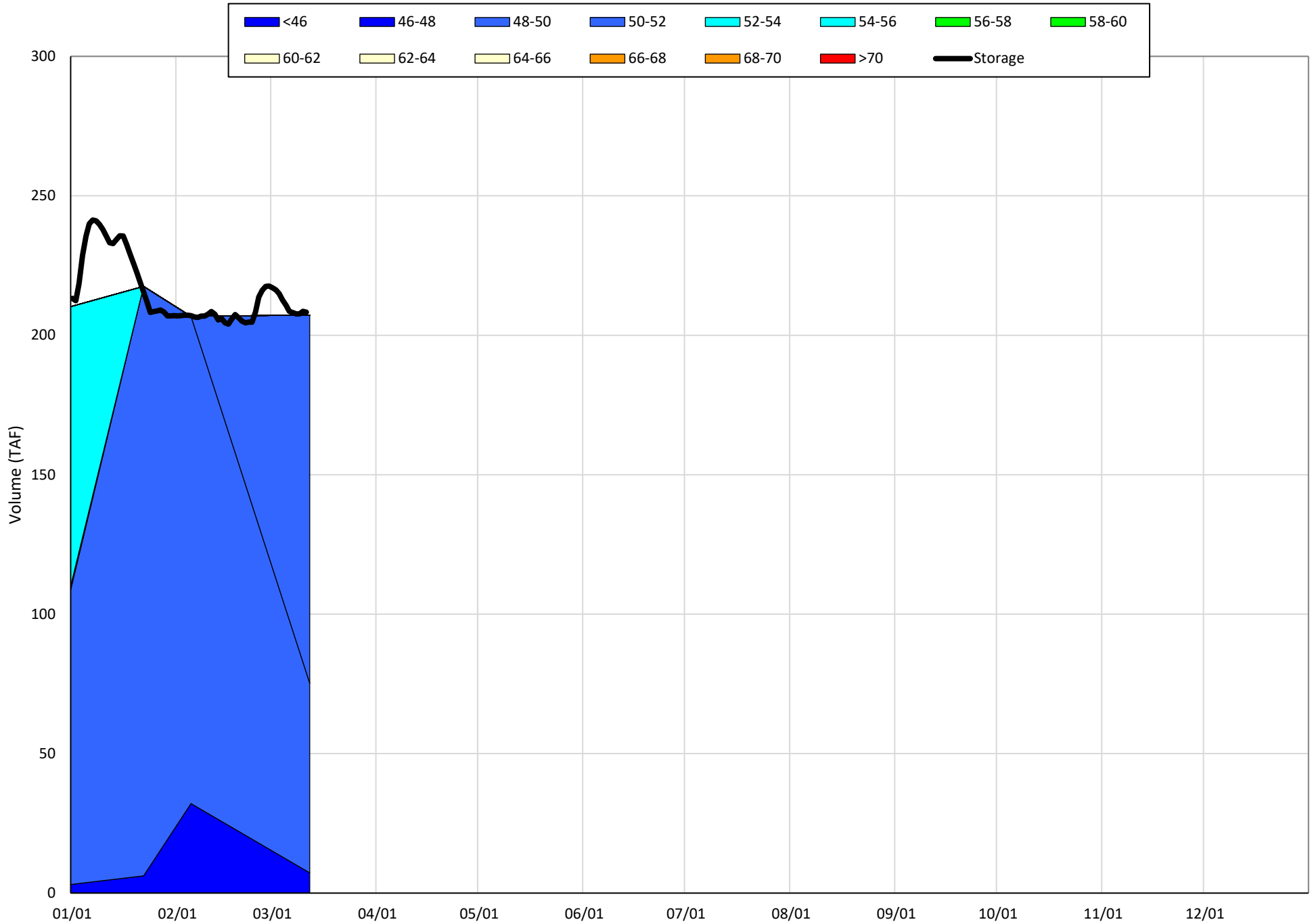
(Historical - Current) / Current

Whiskeytown Lake Isothermobaths & Cold Water Pool Statistics

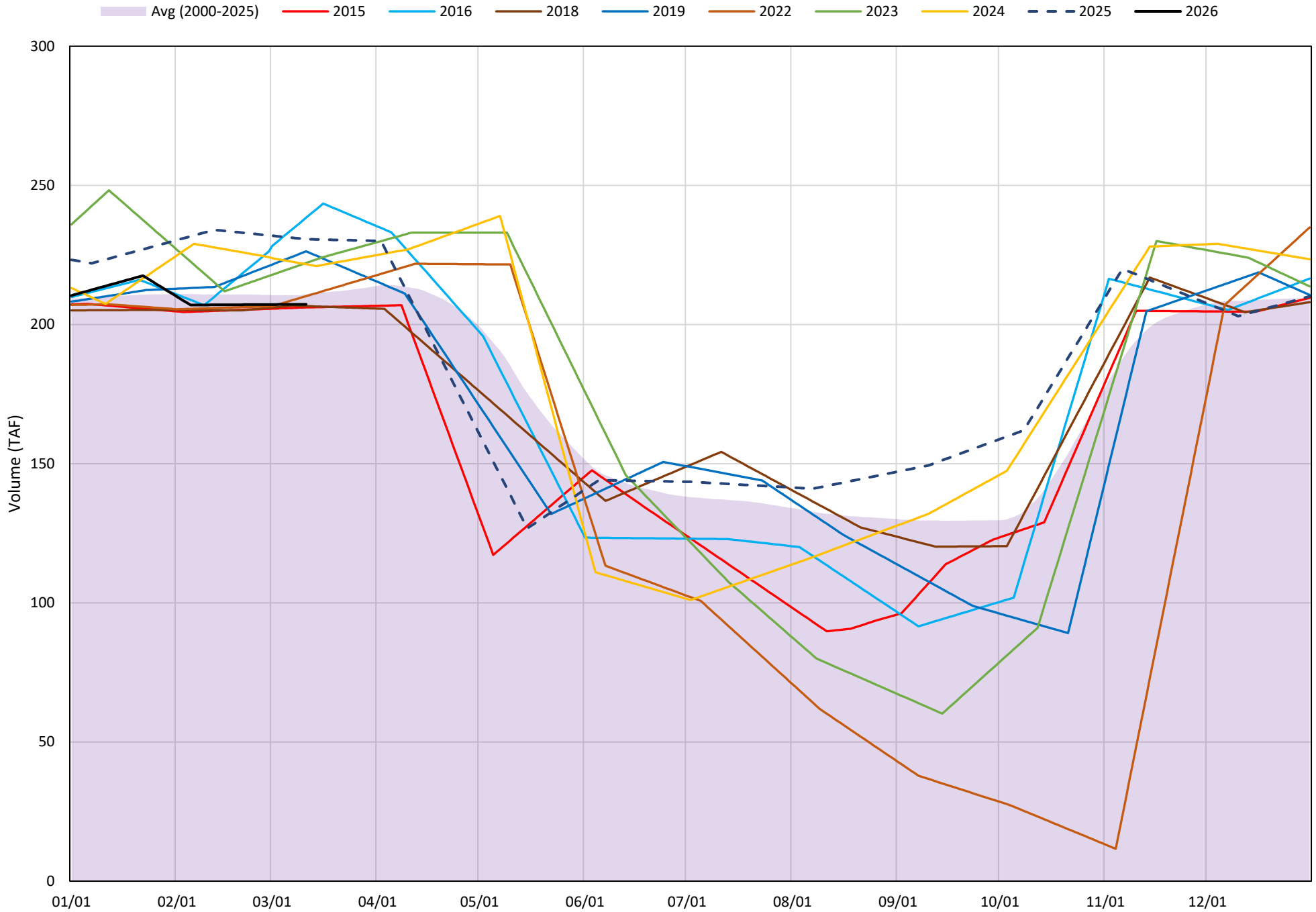
2026

Page	Description
24	- Whiskeytown Lake Isothermobaths Plot
25	- Whiskeytown Lake Cold Water Pool Volume $\leq 60^{\circ}\text{F}$
26	- Whiskeytown Lake Cold Water Pool Volume $\leq 58^{\circ}\text{F}$
27	- Whiskeytown Lake Cold Water Pool Volume $\leq 56^{\circ}\text{F}$
28	- Whiskeytown Lake Cold Water Pool Volume $\leq 60^{\circ}\text{F}$ - Percent Exceedances
29	- Whiskeytown Lake Cold Water Pool Volume $\leq 58^{\circ}\text{F}$ - Percent Exceedances
30	- Whiskeytown Lake Cold Water Pool Volume $\leq 56^{\circ}\text{F}$ - Percent Exceedances
31	- Whiskeytown Lake Cold Water Pool Comparison by Year

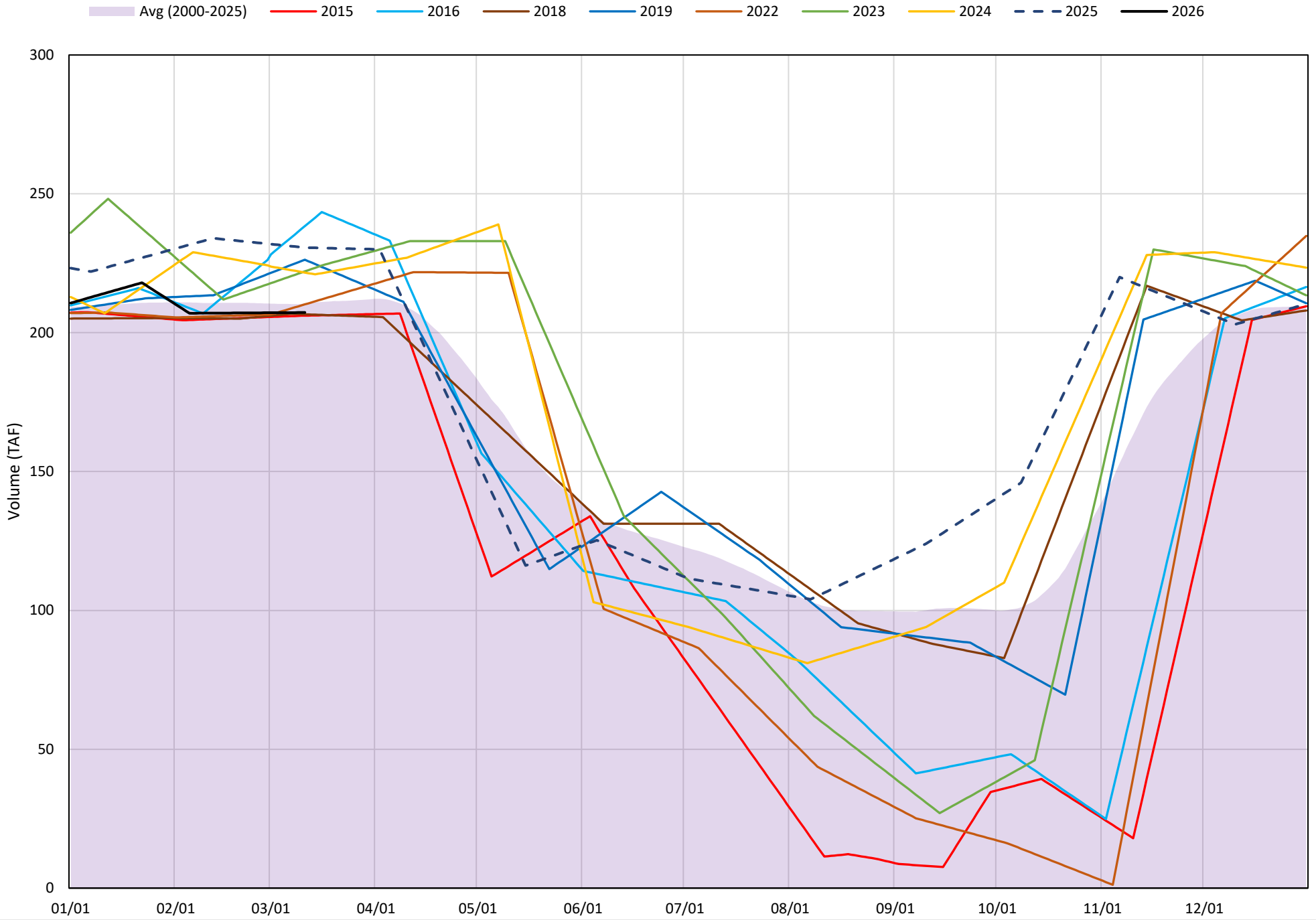
Whiskeytown Lake Isothermobaths Plot - 2026



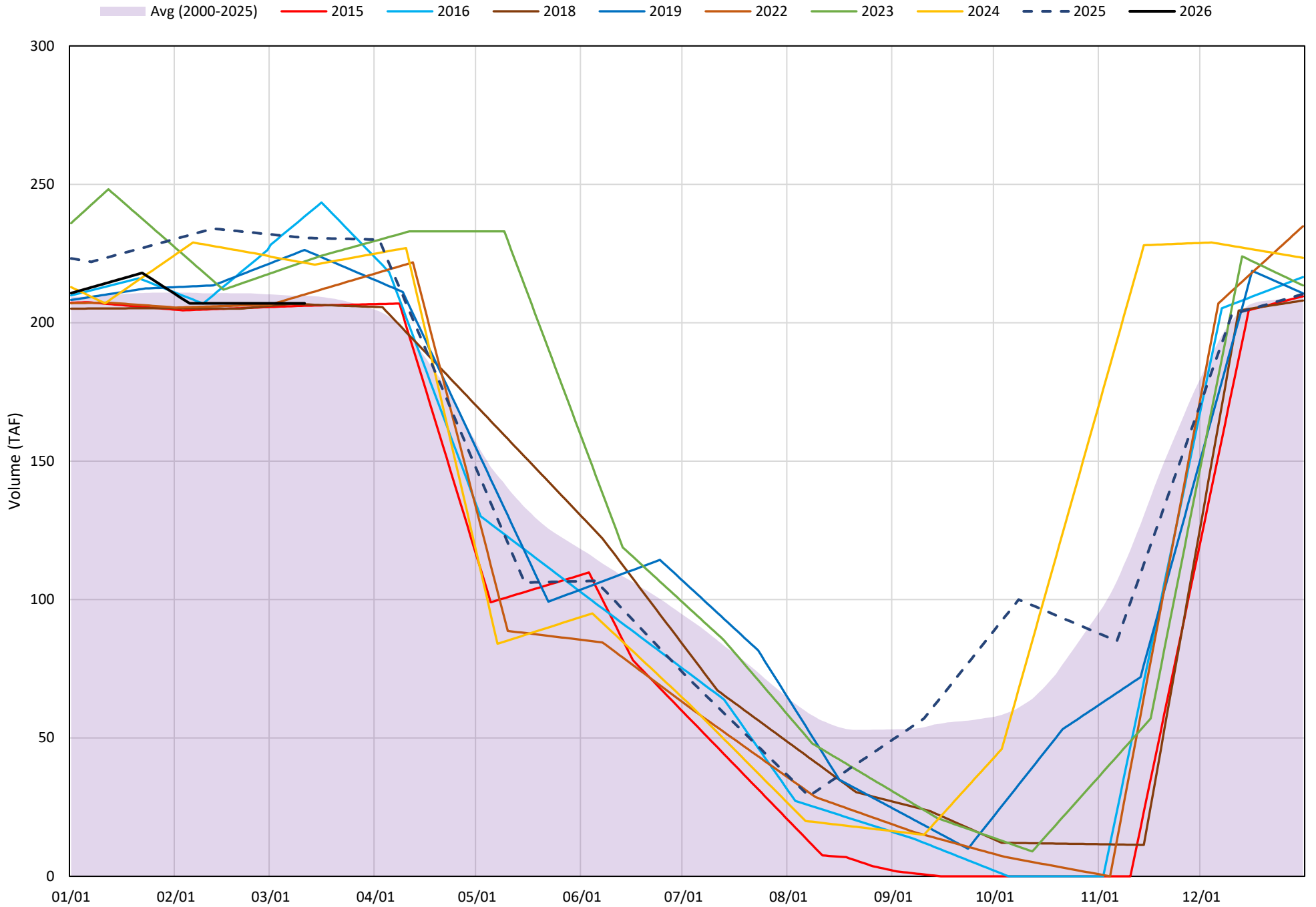
Whiskeytown Lake Cold Water Pool Volume $\leq 60^{\circ}\text{F}$



Whiskeytown Lake Cold Water Pool Volume $\leq 58^{\circ}\text{F}$

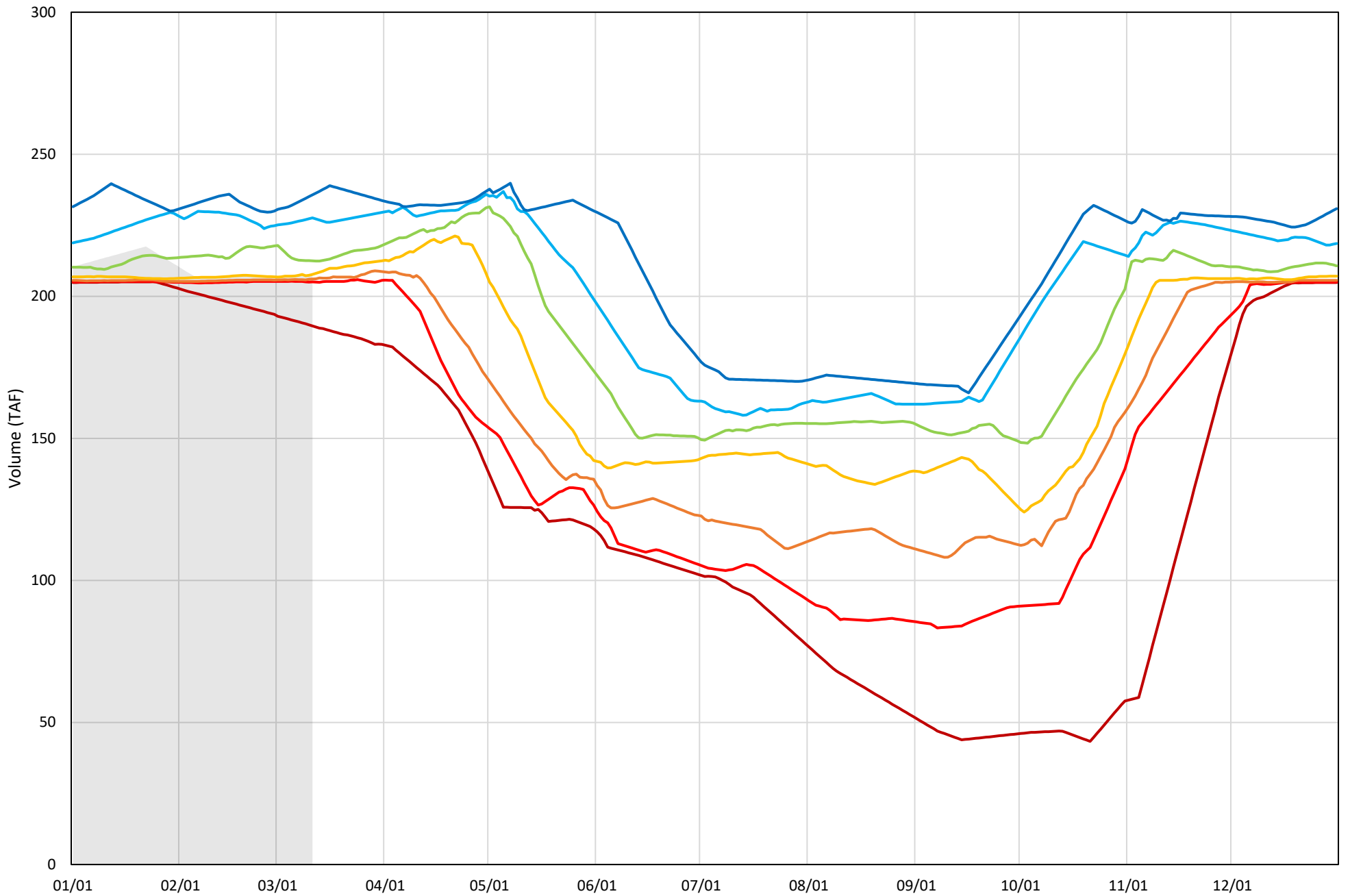


Whiskeytown Lake Cold Water Pool Volume $\leq 56^{\circ}\text{F}$



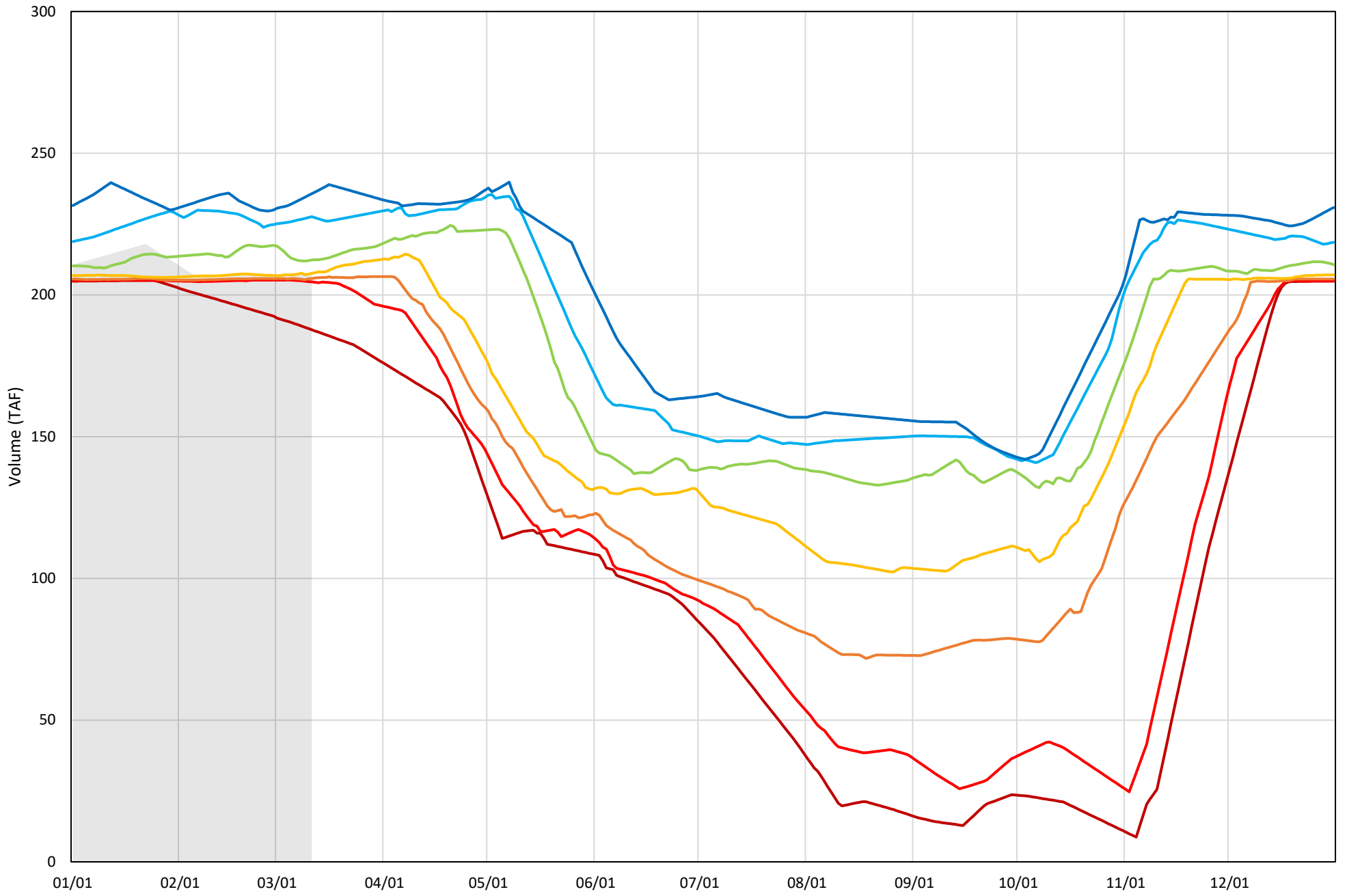
Whiskeytown Lake Cold Water Pool Volume $\leq 60^{\circ}\text{F}$ - Percent Exceedances (2000-2025)

2026 95 90 75 50 25 10 5



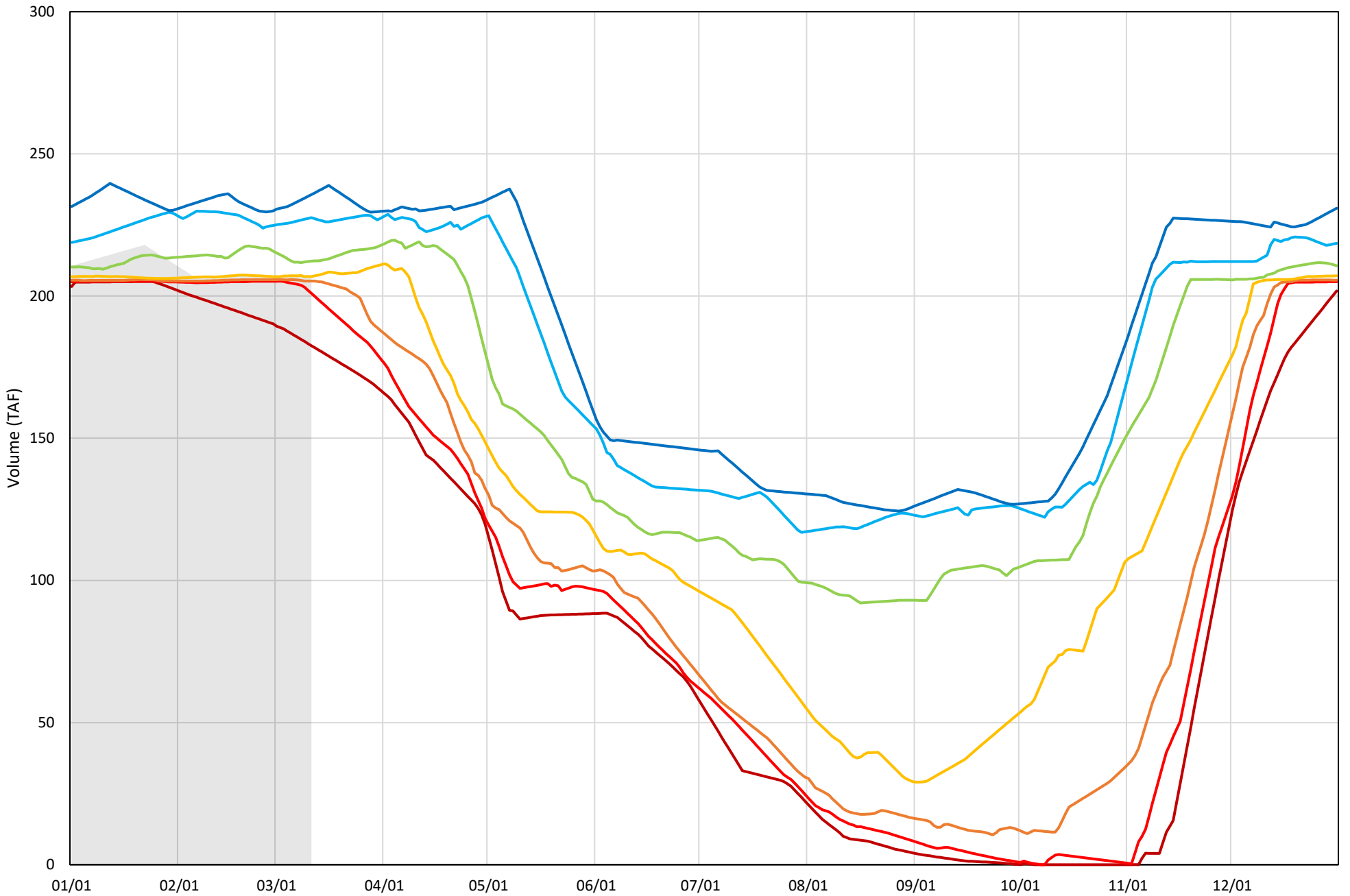
Whiskeytown Lake Cold Water Pool Volume $\leq 58^{\circ}\text{F}$ - Percent Exceedances (2000-2025)

2026 95 90 75 50 25 10 5



Whiskeytown Lake Cold Water Pool Volume $\leq 56^{\circ}\text{F}$ - Percent Exceedances (2000-2025)

2026 95 90 75 50 25 10 5



Whiskeytown Cold Water Pool Comparison by Year (for Specified Date)

Mar-12 2026	Δ TAF				% Δ			
	≤60°	≤58°	≤56°	Abs. Avg.	≤60°	≤58°	≤56°	Abs. Avg.
2000	-2.4	-2.4	-2.2	2.3	-1.2	-1.2	-1.0	1.1
2001	5.6	2.7	-4.8	4.4	2.7	1.3	-2.3	2.1
2002	-2.1	-2.1	-1.8	2.0	-1.0	-1.0	-0.9	1.0
2003	-1.1	-1.1	-0.9	1.1	-0.6	-0.6	-0.4	0.5
2004	0.3	-3.3	-9.0	4.2	0.2	-1.6	-4.4	2.0
2005	-0.7	-0.7	-0.4	0.6	-0.3	-0.3	-0.2	0.3
2006	-1.4	-1.4	-1.1	1.3	-0.7	-0.7	-0.5	0.6
2007	0.0	0.0	-0.8	0.3	0.0	0.0	-0.4	0.1
2008	3.2	3.2	3.4	3.3	1.5	1.5	1.7	1.6
2009	5.1	5.1	5.3	5.2	2.4	2.4	2.6	2.5
2010	3.7	3.7	4.0	3.8	1.8	1.8	1.9	1.8
2011	3.6	3.6	3.8	3.7	1.7	1.7	1.9	1.8
2012	-25.9	-28.3	-32.7	29.0	-12.5	-13.7	-15.8	14.0
2013	-2.0	-2.0	-1.7	1.9	-1.0	-1.0	-0.8	0.9
2014	5.0	5.0	5.3	5.1	2.4	2.4	2.6	2.5
2015	-1.1	-1.1	-0.9	1.1	-0.6	-0.6	-0.4	0.5
2016	31.1	31.1	31.4	31.2	15.0	15.0	15.2	15.1
2017	0.6	0.6	0.9	0.7	0.3	0.3	0.4	0.3
2018	-0.6	-0.6	-0.4	0.6	-0.3	-0.3	-0.2	0.3
2019	19.0	19.0	19.3	19.1	9.2	9.2	9.3	9.2
2020	-1.7	-1.7	-2.7	2.0	-0.8	-0.8	-1.3	1.0
2021	-0.2	-0.2	0.1	0.1	-0.1	-0.1	0.0	0.1
2022	2.9	2.9	3.2	3.0	1.4	1.4	1.5	1.5
2023	14.8	14.8	15.1	14.9	7.2	7.2	7.3	7.2
2024	14.4	14.4	14.6	14.5	6.9	6.9	7.1	7.0
2025	23.4	23.4	23.7	23.5	11.3	11.3	11.4	11.3

}

Historical - Current

}

(Historical - Current) / Current