

Northern CVP Water Temperature Report

March - 2020

Page	Description
1	- Mean Daily Water Temperature, Release Flow Rates and Air Temperatures with Monthly Averages
2	- Redding 10-Day Forecasted Air Temperatures
3	- Sacramento River Mean Daily Water Temperature, Air Temperature and 10-Day Forecasted Air Temperature Plot - Water Temperature Measuring Station Details - Temperature Control Point Details
4	- Shasta Lake Isothermobaths Plot
5	- Trinity Lake Isothermobaths Plot
6	- Whiskeytown Lake Isothermobaths Plot
x	- TCD Configuration (External Link)



— BUREAU OF —
RECLAMATION

All Data in this Report is Preliminary and Subject to Change

DATE	Mean Daily Water Temperatures (°F)													Mean Daily Release (CFS)			Mean Daily Air Temperatures (°F)			
	TCD ¹	SHD	SPP ¹	KWK	SAC	CCR	BSF ²	JLF	BND	RDB	IGO	LWS	-----	Shasta Generation	Spring Creek P.P.	Keswick Total	RDD	BSF	RDB	LWS
Feb	49.9	49.0	48.1	49.2	49.5	49.7	49.8	50.1	50.3	50.2	47.4	44.2	-	4032	55	4372	53.8	50.8	53.4	-
03/01	50.4	? 49.0	# -	49.0	49.2	49.3	49.7	50.0	50.3	50.2	48.1	46.3	-	4691	1	5508	54.0	52.6	53.6	-
03/02	51.1	? 49.2	# -	48.9	49.2	49.5	49.7	50.0	50.2	50.0	48.4	46.3	-	5131	0	5507	60.0	57.4	59.2	-
03/03	49.9	? 49.2	# -	49.6	49.9	50.4	? 51.0	51.7	52.0	51.7	49.2	47.1	-	5052	1	5498	68.0	63.4	65.5	-
03/04	49.8	? 48.9	# -	49.8	50.2	50.8	51.6	52.4	52.8	53.1	49.4	47.5	-	5587	0	5507	↑ 65.0	59.3	61.5	-
03/05	49.9	? 48.8	# -	49.7	50.1	50.6	51.5	52.4	52.8	53.4	49.2	47.4	-	5304	0	5479	57.5	55.0	57.4	-
03/06	49.3	? 48.8	# -	49.5	49.9	50.3	51.1	52.1	52.6	53.2	48.9	47.9	-	5041	0	5315	53.0	52.5	54.0	-
03/07	49.2	? 48.6	# -	49.3	49.5	49.7	50.5	51.3	51.7	52.1	48.7	48.2	-	4935	0	5147	50.5	49.4	49.9	-
03/08	49.2	48.6	# -	49.1	49.5	49.8	50.3	51.0	51.3	51.5	? 48.7	47.7	-	4853	0	5027	51.0	50.0	50.7	-
03/09	49.2	48.7	# -	49.0	49.5	50.0	50.5	51.3	51.6	52.0	48.9	48.5	-	4695	0	5009	52.5	51.0	53.2	-
03/10	49.3	48.8	# -	49.3	49.7	50.3	50.9	51.8	52.1	52.6	49.2	48.3	-	4727	0	5009	59.5	54.6	58.5	-
03/11	49.2	48.7	# -	49.4	49.9	50.6	51.6	52.6	53.0	53.4	49.4	48.6	-	4957	0	5005	58.5	56.3	58.8	-
03/12	49.3	48.7	# -	49.8	50.3	50.8	51.8	52.8	53.3	53.9	49.5	49.0	-	3958	20	4827	62.5	60.2	63.0	-
03/13	49.4	48.6	48.4	49.5	50.1	50.9	52.0	53.1	53.5	54.0	49.4	48.8	-	3943	391	4659	63.0	58.0	60.0	-
03/14	49.0	48.5	48.8	49.5	49.7	49.9	50.9	51.8	52.4	53.1	? 48.8	48.5	-	3676	1000	4549	49.0	50.3	51.2	-
03/15	49.2	48.4	48.5	49.1	49.3	49.3	49.7	50.2	50.3	50.5	47.7	47.5	-	2660	1887	4570	45.0	44.5	45.9	-
03/16	49.2	48.6	48.6	48.7	49.0	49.1	49.1	49.5	49.7	49.9	48.4	47.1	-	3293	1670	4596	47.0	44.5	45.8	-
03/17	49.2	48.7	48.6	48.5	48.6	48.4	48.5	49.2	49.5	49.5	? 47.8	45.5	-	2205	1676	4597	41.5	41.8	43.5	-
03/18	# -	48.4	48.4	48.5	48.7	48.6	47.6	47.9	48.0	48.2	48.2	46.5	-	3039	1124	4564	45.0	44.2	45.0	-
03/19	# -	48.6	48.8	48.8	49.2	49.5	49.0	49.3	49.3	49.0	48.7	47.1	-	2857	1332	4564	↓ 46.5	45.4	46.9	-
03/20	49.3	48.7	48.7	49.0	49.4	50.0	50.5	51.2	51.5	51.5	49.0	46.9	-	2500	1643	4569	52.0	50.1	51.5	-
03/21	49.1	48.7	48.6	49.3	49.8	50.4	51.1	52.0	52.3	52.7	49.3	47.2	-	2619	1370	4565	54.0	52.6	54.3	-
03/22	49.0	? 48.8	48.6	49.4	50.0	50.7	51.9	52.9	53.2	53.7	49.6	48.0	-	2352	1927	4563	56.0	54.2	56.2	-
03/23	49.1	? 48.4	48.5	49.4	49.8	50.2	51.5	52.8	53.5	54.0	49.3	48.1	-	2811	1901	4574	53.0	52.7	53.2	-
03/24	49.0	48.5	48.8	49.3	49.6	49.8	50.4	51.0	51.5	52.2	49.2	47.7	-	3393	1963	4569	47.0	48.2	49.0	-
03/25	49.0	48.5	48.7	49.0	49.6	49.9	50.4	50.9	51.1	51.3	48.5	47.5	-	2441	1500	4559	46.5	43.8	47.4	-
03/26	49.3	48.7	48.8	48.9	49.6	50.0	50.5	51.2	51.5	52.0	49.1	47.4	-	2364	1781	4555	48.0	46.3	47.1	-
03/27	49.1	48.6	48.9	48.8	49.4	49.8	50.4	51.2	51.5	51.9	49.0	47.0	-	3036	1775	4932	46.5	47.3	48.7	-
03/28	49.2	48.6	48.8	49.0	49.4	49.7	50.7	51.5	51.9	52.1	49.1	47.8	-	3074	1751	4913	51.5	50.8	51.3	-
03/29	49.2	? 48.8	48.8	49.0	49.6	50.2	50.9	51.5	51.8	52.2	49.7	48.3	-	3282	1575	4965	53.0	52.8	53.6	-
03/30	49.1	48.5	48.8	49.0	49.5	49.8	51.0	51.8	52.1	52.4	49.6	48.0	-	3266	1820	4968	55.0	54.7	55.9	-
03/31	49.1	48.7	48.8	49.0	49.7	50.4	51.8	52.5	52.6	52.9	50.3	48.8	-	2731	1936	4960	59.0	58.6	59.1	-
Mar	49.4	48.7	48.7	49.2	49.6	50.0	50.6	51.3	51.6	51.9	49.0	47.6	-	3693	969	4891	53.2	51.7	53.3	-

Total CFS	114473	30044	151629
Total AF	227053	59591	300750

Legend

- ? = 1-9 hours of data missing (Average includes estimations)
- ! = 10 or more hours of data missing (Average not calculated)
- # = Station out of service
- ↑ = Record high air temperature
- ↓ = Record low air temperature
- = Monthly Averages

Notes

- ¹ Temperatures are weighted averages based on individual penstock flow and temperature
- Highlighted cells in the TCD column indicate a TCD change was made on that day
- ² Current control point (see page 3 for more details)
- ³ Column not used this month

D A T E	Redding (RDD) Daily Air Temperatures (°F)																																			
	Actual			Forecasted																																
	Previous Day			Current Day			1 Day			2 Days			3 Days			4 Days			5 Days			6 Days			7 Days			8 Days			9 Days			10 Days		
	↓	↑	Avg	↓	↑	Avg	↓	↑	Avg	↓	↑	Avg	↓	↑	Avg	↓	↑	Avg	↓	↑	Avg	↓	↑	Avg	↓	↑	Avg	↓	↑	Avg	↓	↑	Avg	↓	↑	Avg
03/01	36	64	50.0	48	61	54.5	38	71	54.5	45	78	61.5	42	75	58.5	43	75	59.0	42	67	54.5	41	62	51.5	39	65	52.0	38	70	54.0	42	71	56.5	43	69	56.0
03/02	46	62	54.0	46	72	59.0	44	79	61.5	43	77	60.0	44	73	58.5	45	66	55.5	41	60	50.5	38	61	49.5	41	66	53.5	42	72	57.0	47	68	57.5	46	66	56.0
03/03	46	74	60.0	56	80	68.0	45	78	61.5	44	74	59.0	43	65	54.0	43	58	50.5	37	60	48.5	39	63	51.0	40	70	55.0	46	74	60.0	45	68	56.5	46	63	54.5
03/04	54	82	68.0	50	79	64.5	44	76	60.0	41	66	53.5	40	59	49.5	36	60	48.0	38	64	51.0	41	70	55.5	40	71	55.5	44	69	56.5	45	63	54.0	44	63	53.5
03/05	49	81	65.0	41	75	58.0	44	65	54.5	40	57	48.5	36	59	47.5	39	64	51.5	38	71	54.5	43	73	58.0	45	69	57.0	40	59	49.5	40	60	50.0	39	66	52.5
03/06	41	74	57.5	44	66	55.0	41	57	49.0	37	58	47.5	39	64	51.5	39	73	56.0	43	74	58.5	44	75	59.5	44	68	56.0	39	70	54.5	48	72	60.0	46	72	59.0
03/07	43	63	53.0	46	57	51.5	38	57	47.5	40	60	50.0	39	74	56.5	43	74	58.5	43	78	60.5	44	73	58.5	47	72	59.5	45	75	60.0	48	74	61.0	48	72	60.0
03/08	46	55	50.5	46	58	52.0	41	62	51.5	39	74	56.5	42	75	58.5	44	81	62.5	46	76	61.0	43	64	53.5	48	68	58.0	47	63	55.0	42	63	52.5	40	69	54.5
03/09	45	57	51.0	41	64	52.5	39	75	57.0	43	75	59.0	42	79	60.5	41	75	58.0	43	62	52.5	38	61	49.5	47	72	59.5	46	75	60.5	43	71	57.0	45	73	59.0
03/10	40	65	52.5	44	76	60.0	42	75	58.5	42	80	61.0	41	77	59.0	40	60	50.0	35	57	46.0	34	60	47.0	42	65	53.5	40	70	55.0	43	69	56.0	45	71	58.0
03/11	42	77	59.5	47	74	60.5	43	79	61.0	42	71	56.5	41	56	48.5	41	55	48.0	34	60	47.0	33	59	46.0	42	65	53.5	39	68	53.5	44	71	57.5	45	70	57.5
03/12	44	73	58.5	44	80	62.0	45	73	59.0	37	56	46.5	37	55	46.0	35	56	45.5	36	60	48.0	37	57	47.0	44	63	53.5	45	64	54.5	45	66	55.5	44	69	56.5
03/13	44	81	62.5	59	73	66.0	38	56	47.0	35	54	44.5	37	55	46.0	38	57	47.5	39	57	48.0	38	60	49.0	40	66	53.0	42	69	55.5	47	69	58.0	46	72	59.0
03/14	54	72	63.0	45	57	51.0	36	53	44.5	32	57	44.5	37	56	46.5	38	58	48.0	39	61	50.0	40	64	52.0	43	62	52.5	45	71	58.0	47	69	58.0	45	65	55.0
03/15	41	57	49.0	43	52	47.5	33	55	44.0	37	50	43.5	38	57	47.5	37	60	48.5	39	62	50.5	41	63	52.0	44	62	53.0	45	59	52.0	41	64	52.5	42	68	55.0
03/16	39	51	45.0	39	54	46.5	36	49	42.5	37	57	47.0	35	62	48.5	37	62	49.5	39	64	51.5	40	62	51.0	41	60	50.5	42	63	52.5	43	67	55.0	43	67	55.0
03/17	39	55	47.0	39	48	43.5	38	56	47.0	33	62	47.5	35	62	48.5	38	65	51.5	40	66	53.0	43	62	52.5	42	60	51.0	44	61	52.5	43	65	54.0	44	65	54.5
03/18	39	44	41.5	40	55	47.5	31	62	46.5	36	65	50.5	37	70	53.5	40	69	54.5	43	62	52.5	43	60	51.5	41	62	51.5	43	64	53.5	44	63	53.5	44	64	54.0
03/19	37	53	45.0	32	63	47.5	34	66	50.0	37	71	54.0	40	72	56.0	44	62	53.0	42	57	49.5	39	61	50.0	43	64	53.5	42	62	52.0	47	67	57.0	45	74	59.5
03/20	31	62	46.5	38	66	52.0	36	71	53.5	39	72	55.5	44	63	53.5	40	56	48.0	38	57	47.5	35	62	48.5	43	60	51.5	45	61	53.0	49	67	58.0	46	65	55.5
03/21	37	67	52.0	38	70	54.0	39	70	54.5	43	64	53.5	39	56	47.5	36	57	46.5	34	63	48.5	38	61	49.5	42	65	53.5	49	71	60.0	46	71	58.5	45	68	56.5
03/22	37	71	54.0	38	72	55.0	41	64	52.5	39	55	47.0	36	57	46.5	34	63	48.5	36	62	49.0	40	66	53.0	43	70	56.5	48	73	60.5	47	73	60.0	47	76	61.5
03/23	40	72	56.0	43	65	54.0	39	56	47.5	35	57	46.0	32	63	47.5	35	62	48.5	41	64	52.5	41	70	55.5	46	73	59.5	51	75	63.0	51	75	63.0	48	77	62.5
03/24	42	64	53.0	45	55	50.0	34	56	45.0	33	63	48.0	35	62	48.5	41	61	51.0	42	67	54.5	43	72	57.5	46	72	59.0	49	67	58.0	47	66	56.5	44	67	55.5
03/25	40	54	47.0	37	55	46.0	31	61	46.0	34	62	48.0	41	53	47.0	43	63	53.0	43	68	55.5	44	74	59.0	48	76	62.0	53	72	62.5	52	76	64.0	50	75	62.5
03/26	36	57	46.5	35	63	49.0	32	61	46.5	42	56	49.0	42	62	52.0	41	68	54.5	44	71	57.5	46	73	59.5	42	70	56.0	45	70	57.5	44	73	58.5	45	69	57.0
03/27	34	62	48.0	33	62	47.5	40	57	48.5	43	59	51.0	41	63	52.0	43	70	56.5	45	72	58.5	43	70	56.5	47	76	61.5	51	80	65.5	51	77	64.0	50	71	60.5
03/28	33	60	46.5	49	55	52.0	44	55	49.5	43	59	51.0	43	70	56.5	43	77	60.0	41	78	59.5	43	80	61.5	51	83	67.0	52	82	67.0	53	80	66.5	51	79	65.0
03/29	48	55	51.5	48	58	53.0	44	58	51.0	44	66	55.0	39	70	54.5	41	73	57.0	40	76	58.0	43	77	60.0	45	69	57.0	44	68	56.0	46	71	58.5	45	76	60.5
03/30	47	59	53.0	52	57	54.5	46	64	55.0	36	64	50.0	37	69	53.0	39	67	53.0	42	70	56.0	43	71	57.0	45	70	57.5	44	67	55.5	44	65	54.5	43	67	55.0
03/31	52	58	55.0	52	66	59.0	36	64	50.0	36	66	51.0	37	66	51.5	42	62	52.0	43	60	51.5	39	61	50.0	40	64	52.0	48	60	54.0	46	65	55.5	43	69	56.0

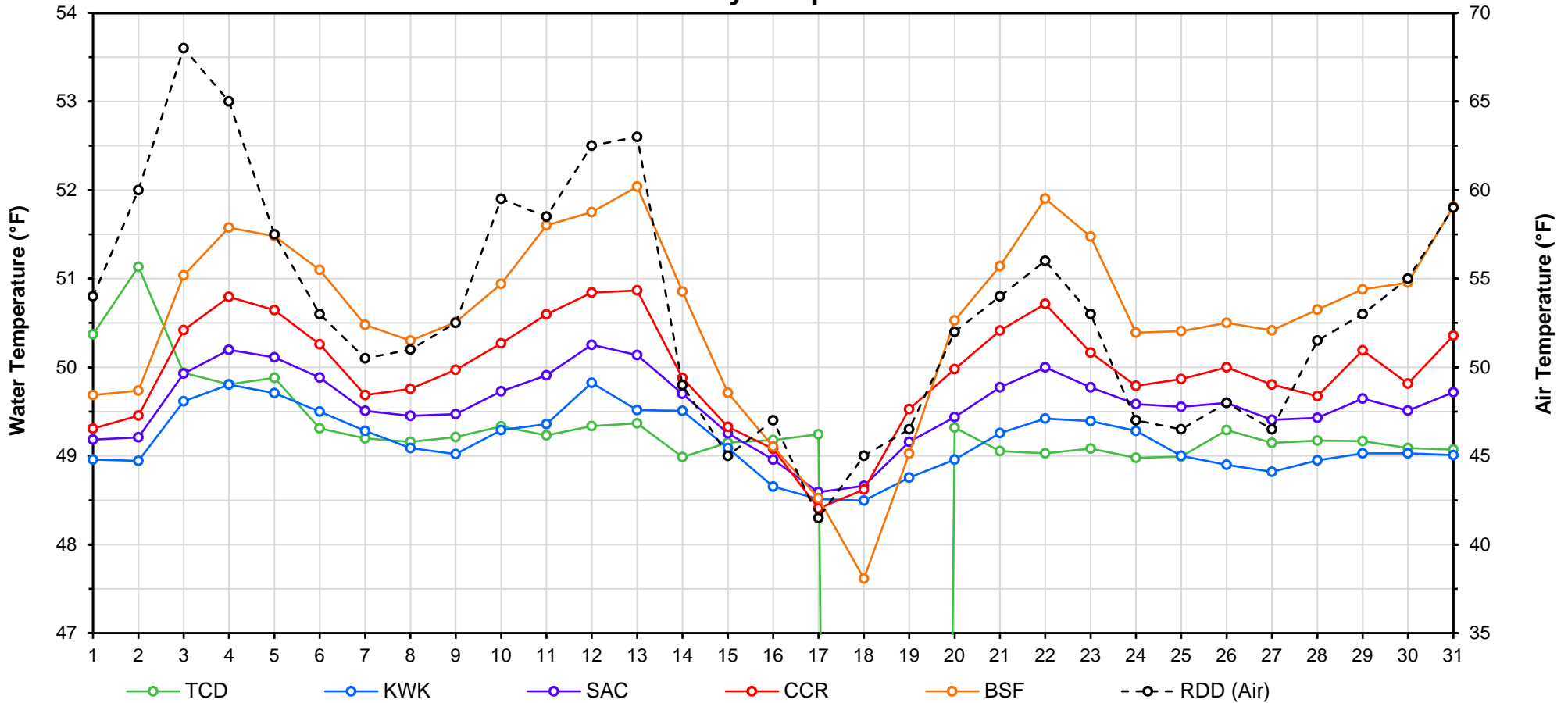
Web Links

- [10-Day Min/Max Forecast](#)
- [Previous Days Min/Max Actuals](#)

Legend

- NR = Forecasted temperatures not recorded
- 100** = Previous day actual temperatures in red and bolded indicate a record temperature for that date

Mean Daily Temperatures



Station Details			
Code	Body of Water	Location ¹	CDEC Link
TCD	N/A	Shasta Power Plant	N/A
SHD	Sacramento River	0.3 miles downstream of Shasta Power Plant	Click Here
SPP	N/A	Spring Creek Power Plant	N/A
KWK	Sacramento River	0.8 miles downstream of Keswick Dam	Click Here
SAC	Sacramento River	4.8 miles downstream of Keswick Dam	Click Here
CCR	Sacramento River	9.7 miles downstream of Keswick Dam	Click Here
BSF	Sacramento River	25 miles downstream of Keswick Dam	Click Here
JLF	Sacramento River	34 miles downstream of Keswick Dam	Click Here
BND	Sacramento River	41 miles downstream of Keswick Dam	Click Here
RDB	Sacramento River	58 miles downstream of Keswick Dam	Click Here
IGO	Clear Creek	7.3 miles downstream of Whiskeytown Dam	Click Here
LWS	Trinity River	1.1 miles downstream of Lewiston Dam	Click Here
DGC ²	Trinity River	19 miles downstream of Lewiston Dam	Click Here
NFH ³	Trinity River	38 miles downstream of Lewiston Dam	Click Here

Temperature Control Point		
Point	Temp. (°F)	Begin Date
BSF	56.0	5/15/2019

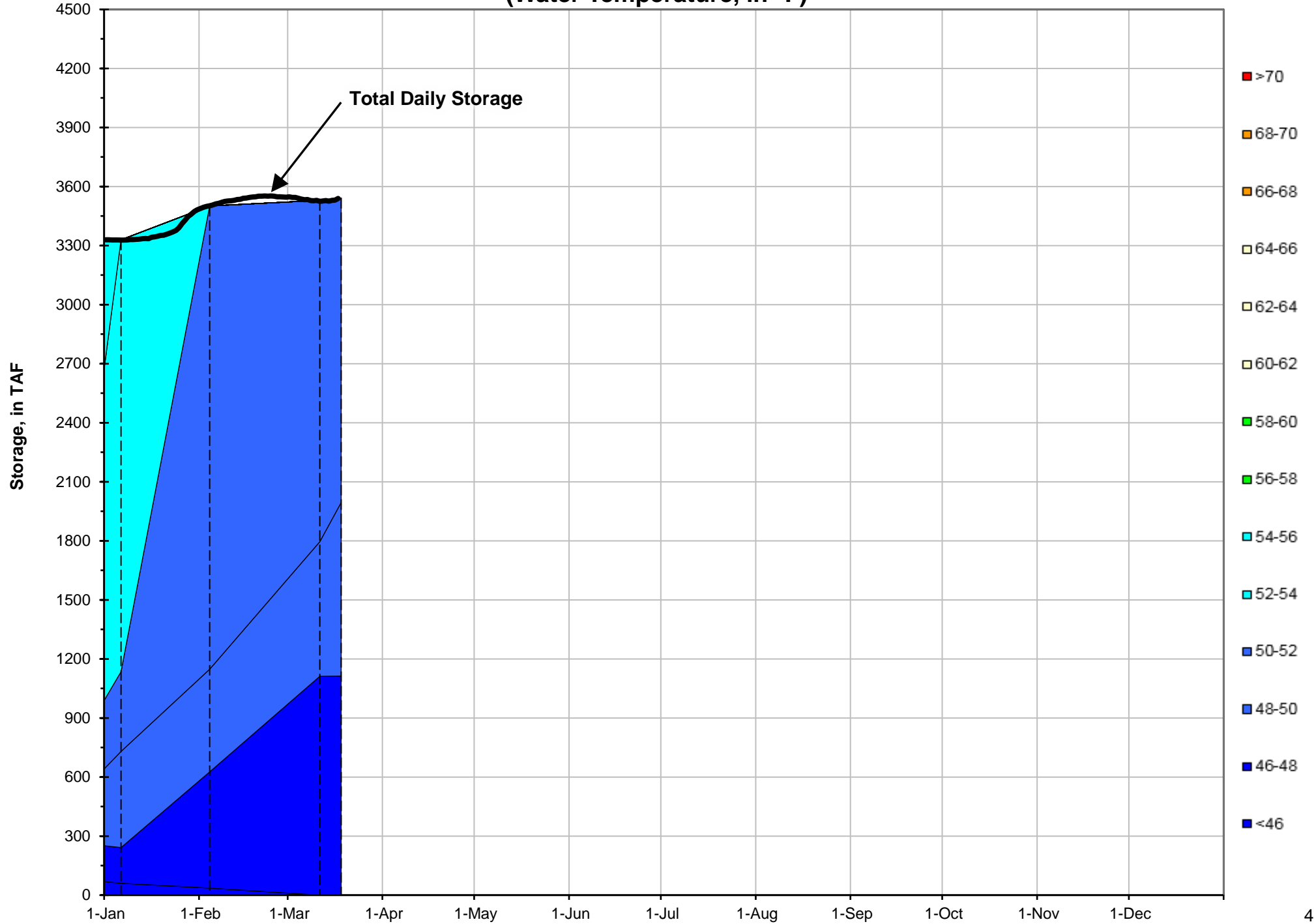
Notes

¹ Distances are approximate

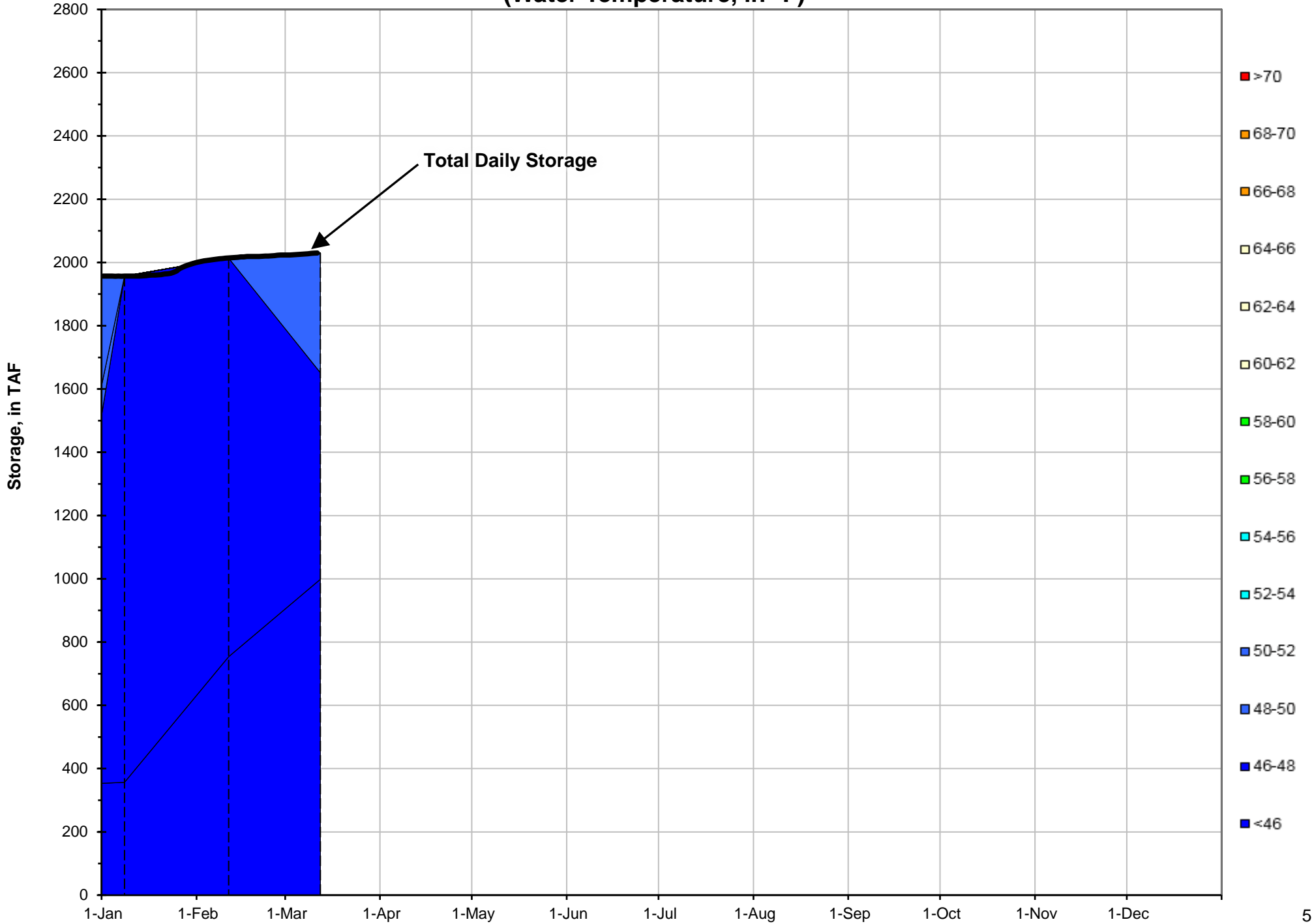
² DGC is only reported in September

³ NFH is only reported in October, November and December

Shasta Lake Isothermobaths - 2020 (Water Temperature, in °F)



Trinity Lake Isothermobaths - 2020 (Water Temperature, in °F)



Whiskeytown Lake Isothermobaths - 2020 (Water Temperature, in °F)

