

Northern CVP Water Temperature Report

March - 2019

Page	Description
1	- Mean Daily Water Temperature, Release Flow Rates and Air Temperatures with Monthly Averages
2	- Redding 10-Day Forecasted Air Temperatures
3	- Sacramento River Mean Daily Water Temperature, Air Temperature and 10-Day Forecasted Air Temperature Plot - Water Temperature Measuring Station Details - Temperature Control Point Details
4	- Daily Maximum and 7DADM
5	- Shasta Lake Isothermobaths Plot
6	- Trinity Lake Isothermobaths Plot
7	- Whiskeytown Lake Isothermobaths Plot
x	- TCD Configuration (External Link)



All Data in this Report is Preliminary and Subject to Change

DATE	Mean Daily Water Temperatures (°F)													Mean Daily Release (CFS)			Mean Daily Air Temperatures (°F)							
	TCD ¹	SHD ⁴	SPP ¹	KWK	SAC	CCR	BSF ²	JLF	BND	RDB	IGO	LWS	----- ³	Shasta Generation	Spring Creek P.P.	Keswick Total	RDD	BSF	RDB	LWS				
Feb	49.4	48.7	47.0	48.2	47.5	48.2	47.0	46.9	-	47.0	45.9	42.5	-	2055	925	3991	44.9	44.6	45.5	-				
03/01	48.2	47.4	45.9	47.5	47.6	47.8	48.2	48.4	#	-	48.9	!	-	43.2	-	14422	3585	25767	47.5	47.1	47.4	-		
03/02	48.4	47.5	45.9	47.5	47.7	47.9	48.3	48.6	#	-	48.7	?	47.6	43.3	-	14279	3521	28819	52.5	50.0	50.0	-		
03/03	48.5	47.6	46.0	47.7	47.9	48.1	48.8	49.3	#	-	49.5	?	48.5	44.4	-	15147	3771	30696	53.5	51.6	52.2	-		
03/04	48.5	47.5	46.2	47.7	47.9	48.1	48.8	49.3	#	-	49.8	?	48.3	44.6	-	15165	3431	30839	53.5	51.3	51.5	-		
03/05	48.7	47.6	46.1	47.6	47.8	47.9	48.3	48.5	#	-	49.0	?	47.4	43.1	-	15206	3837	30875	49.0	48.5	48.7	-		
03/06	48.6	47.4	46.1	47.8	48.4	48.3	49.3	49.5	49.9	49.6	?	49.5	44.3	-	15374	1713	30073	54.5	54.7	54.5	-			
03/07	48.6	47.8	46.2	47.7	48.0	48.0	49.1	49.5	50.0	50.1	?	49.1	44.8	-	14534	2429	36980	49.5	50.0	51.2	-			
03/08	48.3	47.9	46.3	47.5	47.7	47.9	48.5	48.8	49.3	49.2	!	-	44.4	-	14305	3628	41654	48.0	46.8	46.9	-			
03/09	48.0	47.4	46.6	47.4	47.5	47.7	47.8	47.9	48.4	48.4	46.3	44.2	-	13513	3230	40467	43.0	43.2	44.6	-				
03/10	48.3	47.5	46.4	47.6	47.8	48.0	48.3	48.2	48.6	?	48.4	47.3	45.6	-	13906	2632	40265	51.0	48.3	49.7	-			
03/11	?	48.6	?	47.7	46.6	47.8	48.0	48.2	48.6	?	48.7	47.8	45.4	-	14252	1725	40176	56.5	52.6	53.0	-			
03/12	?	48.6	#	-	46.8	47.9	48.1	48.3	48.7	49.0	49.4	49.6	48.0	45.6	-	15449	1486	39653	52.5	49.8	52.2	-		
03/13	!	-	#	-	47.2	47.9	48.1	48.3	48.5	48.7	49.1	49.2	47.0	45.3	-	15217	1634	39824	48.0	47.6	50.2	-		
03/14	!	-	#	48.1	?	47.2	48.0	48.1	48.3	48.5	48.6	49.1	49.2	47.3	44.9	-	15193	1606	39207	54.5	50.5	52.1	-	
03/15	?	48.7	#	48.3	?	47.0	48.2	48.3	48.5	48.8	49.0	49.4	49.6	47.9	44.3	-	15240	1639	33658	53.5	50.6	52.6	-	
03/16	?	48.8	#	48.3	?	46.9	48.2	48.4	48.7	49.1	49.4	49.9	50.1	48.2	45.4	-	15293	1427	29031	54.0	52.8	55.2	-	
03/17	!	-	#	-	?	46.9	48.2	48.4	48.7	49.3	49.8	50.2	50.5	48.8	46.2	-	15019	1530	24238	58.5	55.1	57.1	-	
03/18	#	-	#	-	?	46.9	48.3	48.5	48.8	49.6	50.2	50.7	51.0	49.0	#	-	15217	1610	20769	58.0	56.5	59.5	-	
03/19	!	-	#	48.6	?	47.0	48.3	48.6	48.9	49.6	50.3	50.8	51.1	49.0	!	-	15286	1995	17706	60.5	56.7	59.3	-	
03/20	49.2	#	48.2	?	46.9	48.4	48.7	48.9	49.8	50.5	51.0	50.9	?	49.0	47.6	-	13822	439	14954	56.0	53.1	53.9	-	
03/21	49.3	#	-	46.9	48.2	48.6	49.0	50.1	50.8	51.2	51.1	49.3	48.1	-	10616	607	12734	55.5	53.8	55.0	-			
03/22	49.9	#	-	47.0	48.4	48.6	48.9	49.6	50.2	50.8	50.8	48.3	46.8	-	8603	1538	10934	48.0	47.6	48.0	-			
03/23	50.3	#	-	47.0	48.4	49.0	49.1	50.3	50.5	50.8	50.4	49.6	48.2	-	8652	1011	10023	54.0	51.5	52.1	-			
03/24	50.5	#	-	47.2	48.7	49.1	49.4	50.5	51.1	51.5	51.5	49.3	48.5	-	8948	444	10188	51.0	50.3	51.6	-			
03/25	49.6	#	-	47.1	48.8	49.1	49.0	49.9	50.4	51.0	50.9	48.5	47.5	-	9061	606	10037	50.0	49.7	50.8	-			
03/26	49.7	#	-	?	47.2	48.5	48.9	49.1	50.4	51.1	50.9	49.2	49.1	-	8730	567	10151	53.0	52.8	54.3	-			
03/27	49.7	#	48.9	?	47.3	48.8	49.5	49.2	51.1	51.6	52.1	?	52.3	?	49.5	49.5	-	10183	1605	13249	52.5	53.0	54.3	-
03/28	49.8	#	48.7	47.5	48.8	51.1	49.1	49.4	50.0	50.5	50.9	49.1	48.4	-	11638	2412	15245	48.5	50.4	52.2	-			
03/29	50.1	#	-	47.5	48.7	?	51.4	49.3	50.7	51.0	51.4	51.3	50.0	49.2	-	12151	1837	15150	54.0	53.3	55.0	-		
03/30	50.6	#	-	47.6	48.9	?	49.5	49.5	50.7	51.3	51.8	51.9	50.0	50.0	-	10940	2804	15103	58.5	54.0	56.6	-		
03/31	50.5	#	49.3	47.6	49.4	?	49.7	49.9	51.1	51.8	52.3	52.3	50.4	50.2	-	12409	1765	14894	59.5	58.0	59.9	-		
Mar	49.2	48.0	46.8	48.2	48.6	48.6	49.3	49.7	50.4	50.2	48.6	46.3	-	13154	2002	24947	52.9	51.3	52.6	-				
														Total CFS	407770	62064	773359							
														Total AF	808795	123101	1533926							

Legend

- ? = 1-9 hours of data missing (Average includes estimations)
- ! = 10 or more hours of data missing (Average not calculated)
- # = Station out of service
- ↑ = Record high air temperature
- ↓ = Record low air temperature
- = Monthly Averages

Notes

- ¹ Temperatures are weighted averages based on individual penstock flow and temperature
- Highlighted cells in the TCD column indicate a TCD change was made on that day
- ² Current control point (see page 3 for more details)
- ³ Column not used this month
- ⁴ SHD damaged on 03/11. Data beyond 03/11 collected with Onset HOBO logger.

D A T E	Redding (RDD) Daily Air Temperatures (°F)																																			
	Actual			Forecasted																																
	Previous Day			Current Day			1 Day			2 Days			3 Days			4 Days			5 Days			6 Days			7 Days			8 Days			9 Days			10 Days		
	↓	↑	Avg	↓	↑	Avg	↓	↑	Avg	↓	↑	Avg	↓	↑	Avg	↓	↑	Avg	↓	↑	Avg	↓	↑	Avg	↓	↑	Avg	↓	↑	Avg	↓	↑	Avg	↓	↑	Avg
03/01	40	55	47.5	41	55	48.0	41	59	50.0	41	59	50.0	43	58	50.5	44	58	51.0	46	57	51.5	43	56	49.5	36	60	48.0	37	64	50.5	41	66	53.5	43	70	56.5
03/02	40	55	47.5	45	56	50.5	44	58	51.0	43	59	51.0	42	58	50.0	47	56	51.5	45	54	49.5	39	54	46.5	39	61	50.0	44	66	55.0	42	67	54.5	44	65	54.5
03/03	45	60	52.5	49	59	54.0	44	59	51.5	42	58	50.0	46	56	51.0	44	55	49.5	40	54	47.0	38	53	45.5	39	62	50.5	42	66	54.0	44	64	54.0	45	68	56.5
03/04	49	58	53.5	49	58	53.5	43	55	49.0	47	56	51.5	46	54	50.0	39	55	47.0	38	54	46.0	40	56	48.0	43	63	53.0	42	62	52.0	42	65	53.5	43	66	54.5
03/05	49	58	53.5	47	53	50.0	48	56	52.0	45	54	49.5	40	55	47.5	38	53	45.5	39	57	48.0	39	60	49.5	39	64	51.5	46	68	57.0	43	69	56.0	45	72	58.5
03/06	47	51	49.0	50	57	53.5	44	53	48.5	40	54	47.0	38	52	45.0	38	59	48.5	39	62	50.5	42	58	50.0	41	60	50.5	44	68	56.0	43	68	55.5	44	68	56.0
03/07	50	59	54.5	47	52	49.5	38	53	45.5	39	51	45.0	36	57	46.5	38	63	50.5	42	59	50.5	39	58	48.5	39	63	51.0	42	65	53.5	45	68	56.5	44	68	56.0
03/08	47	52	49.5	43	53	48.0	40	49	44.5	38	56	47.0	38	60	49.0	43	56	49.5	38	58	48.0	38	60	49.0	41	65	53.0	43	69	56.0	46	72	59.0	45	71	58.0
03/09	42	54	48.0	40	49	44.5	39	57	48.0	38	63	50.5	42	56	49.0	38	59	48.5	37	61	49.0	40	61	50.5	43	69	56.0	44	70	57.0	49	69	59.0	46	70	58.0
03/10	40	46	43.0	42	57	49.5	39	65	52.0	41	58	49.5	37	60	48.5	39	66	52.5	41	66	53.5	43	65	54.0	45	72	58.5	45	74	59.5	48	74	61.0	45	75	60.0
03/11	42	60	51.0	47	65	56.0	41	60	50.5	37	61	49.0	39	63	51.0	41	67	54.0	44	68	56.0	46	71	58.5	45	72	58.5	46	67	56.5	47	69	58.0	47	65	56.0
03/12	44	69	56.5	41	61	51.0	38	61	49.5	40	61	50.5	41	68	54.5	45	69	57.0	47	72	59.5	48	72	60.0	46	68	57.0	47	66	56.5	47	65	56.0	45	72	58.5
03/13	41	64	52.5	35	61	48.0	40	65	52.5	43	69	56.0	44	69	56.5	47	72	59.5	47	72	59.5	50	66	58.0	46	73	59.5	47	67	57.0	50	67	58.5	46	69	57.5
03/14	33	63	48.0	42	67	54.5	42	70	56.0	44	71	57.5	47	75	61.0	49	74	61.5	50	70	60.0	50	68	59.0	50	66	58.0	48	65	56.5	48	66	57.0	45	70	57.5
03/15	39	70	54.5	36	70	53.0	43	71	57.0	47	75	61.0	48	74	61.0	50	70	60.0	50	67	58.5	50	64	57.0	48	63	55.5	47	66	56.5	45	71	58.0	47	72	59.5
03/16	34	73	53.5	38	72	55.0	45	74	59.5	47	74	60.5	51	71	61.0	51	66	58.5	49	67	58.0	50	61	55.5	47	65	56.0	44	70	57.0	46	71	58.5	45	71	58.0
03/17	35	73	54.0	44	75	59.5	46	74	60.0	50	73	61.5	52	62	57.0	50	65	57.5	49	61	55.0	48	62	55.0	43	64	53.5	45	64	54.5	48	66	57.0	44	72	58.0
03/18	43	74	58.5	42	75	58.5	51	74	62.5	51	60	55.5	47	66	56.5	49	59	54.0	47	63	55.0	44	65	54.5	46	64	55.0	44	70	57.0	48	71	59.5	45	73	59.0
03/19	40	76	58.0	50	74	62.0	50	61	55.5	47	65	56.0	48	59	53.5	46	64	55.0	43	68	55.5	47	63	55.0	46	63	54.5	47	62	54.5	46	67	56.5	46	67	56.5
03/20	49	72	60.5	51	60	55.5	46	64	55.0	47	62	54.5	44	63	53.5	42	67	54.5	46	60	53.0	47	62	54.5	44	61	52.5	44	66	55.0	46	68	57.0	45	71	58.0
03/21	49	63	56.0	47	64	55.5	46	54	50.0	45	60	52.5	42	65	53.5	46	60	53.0	47	61	54.0	46	60	53.0	41	64	52.5	45	71	58.0	47	71	59.0	46	67	56.5
03/22	46	65	55.5	45	53	49.0	45	61	53.0	43	64	53.5	45	59	52.0	45	60	52.5	46	58	52.0	43	61	52.0	43	68	55.5	46	75	60.5	49	71	60.0	45	67	56.0
03/23	44	52	48.0	48	61	54.5	40	65	52.5	46	58	52.0	44	60	52.0	45	56	50.5	44	59	51.5	42	66	54.0	40	68	54.0	47	72	59.5	47	67	57.0	47	68	57.5
03/24	48	60	54.0	40	65	52.5	46	56	51.0	43	59	51.0	45	57	51.0	44	58	51.0	42	65	53.5	43	68	55.5	45	66	55.5	48	73	60.5	50	77	63.5	49	73	61.0
03/25	39	63	51.0	42	54	48.0	44	60	52.0	47	58	52.5	45	58	51.5	42	65	53.5	44	69	56.5	46	66	56.0	47	70	58.5	50	74	62.0	52	73	62.5	48	72	60.0
03/26	47	53	50.0	46	60	53.0	48	60	54.0	45	56	50.5	43	65	54.0	44	69	56.5	47	70	58.5	49	68	58.5	47	72	59.5	50	75	62.5	50	76	63.0	48	73	60.5
03/27	46	60	53.0	47	60	53.5	45	56	50.5	43	64	53.5	42	71	56.5	46	72	59.0	50	68	59.0	48	69	58.5	48	75	61.5	52	71	61.5	53	68	60.5	49	69	59.0
03/28	41	64	52.5	41	62	51.5	43	63	53.0	42	71	56.5	45	72	58.5	51	69	60.0	50	67	58.5	48	66	57.0	48	64	56.0	54	67	60.5	57	68	62.5	46	74	60.0
03/29	41	56	48.5	46	63	54.5	40	71	55.5	44	74	59.0	50	67	58.5	51	64	57.5	48	64	56.0	47	64	55.5	48	62	55.0	49	66	57.5	52	69	60.5	45	72	58.5
03/30	45	63	54.0	46	72	59.0	44	76	60.0	51	68	59.5	51	65	58.0	49	67	58.0	50	64	57.0	48	60	54.0	49	68	58.5	48	77	62.5	53	79	66.0	50	81	65.5
03/31	44	73	58.5	45	76	60.5	50	66	58.0	51	63	57.0	49	66	57.5	50	64	57.0	50	60	55.0	46	63	54.5	50	74	62.0	51	81	66.0	54	78	66.0	50	70	60.0

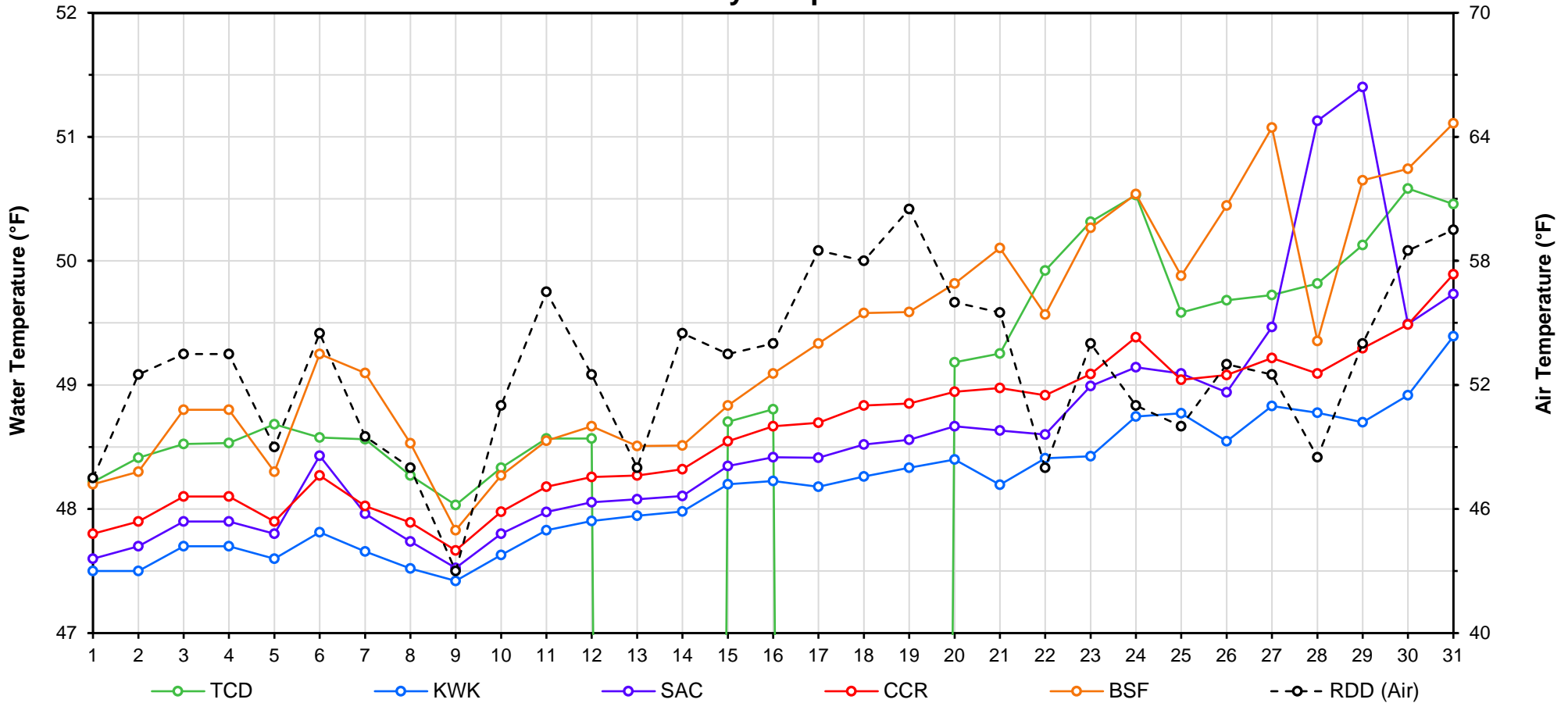
Web Links

- [10-Day Min/Max Forecast](#)
- [Previous Days Min/Max Actuals](#)

Legend

- NR = Forecasted temperatures not recorded
- 100** = Previous day actual temperatures in red and bolded indicate a record temperature for that date

Mean Daily Temperatures



Station Details			
Code	Body of Water	Location ¹	CDEC Link
TCD	N/A	Shasta Power Plant	N/A
SHD	Sacramento River	0.3 miles downstream of Shasta Power Plant	Click Here
SPP	N/A	Spring Creek Power Plant	N/A
KWK	Sacramento River	0.8 miles downstream of Keswick Dam	Click Here
SAC	Sacramento River	4.8 miles downstream of Keswick Dam	Click Here
CCR	Sacramento River	9.7 miles downstream of Keswick Dam	Click Here
BSF	Sacramento River	25 miles downstream of Keswick Dam	Click Here
JLF	Sacramento River	34 miles downstream of Keswick Dam	Click Here
BND	Sacramento River	41 miles downstream of Keswick Dam	Click Here
RDB	Sacramento River	58 miles downstream of Keswick Dam	Click Here
IGO	Clear Creek	7.3 miles downstream of Whiskeytown Dam	Click Here
LWS	Trinity River	1.1 miles downstream of Lewiston Dam	Click Here
DGC ²	Trinity River	19 miles downstream of Lewiston Dam	Click Here
NFH ³	Trinity River	38 miles downstream of Lewiston Dam	Click Here

Temperature Control Point		
Point	Temp. (°F)	Begin Date
BSF	56.0	05/25/2018

Notes

¹ Distances are approximate

² DGC is only reported in September

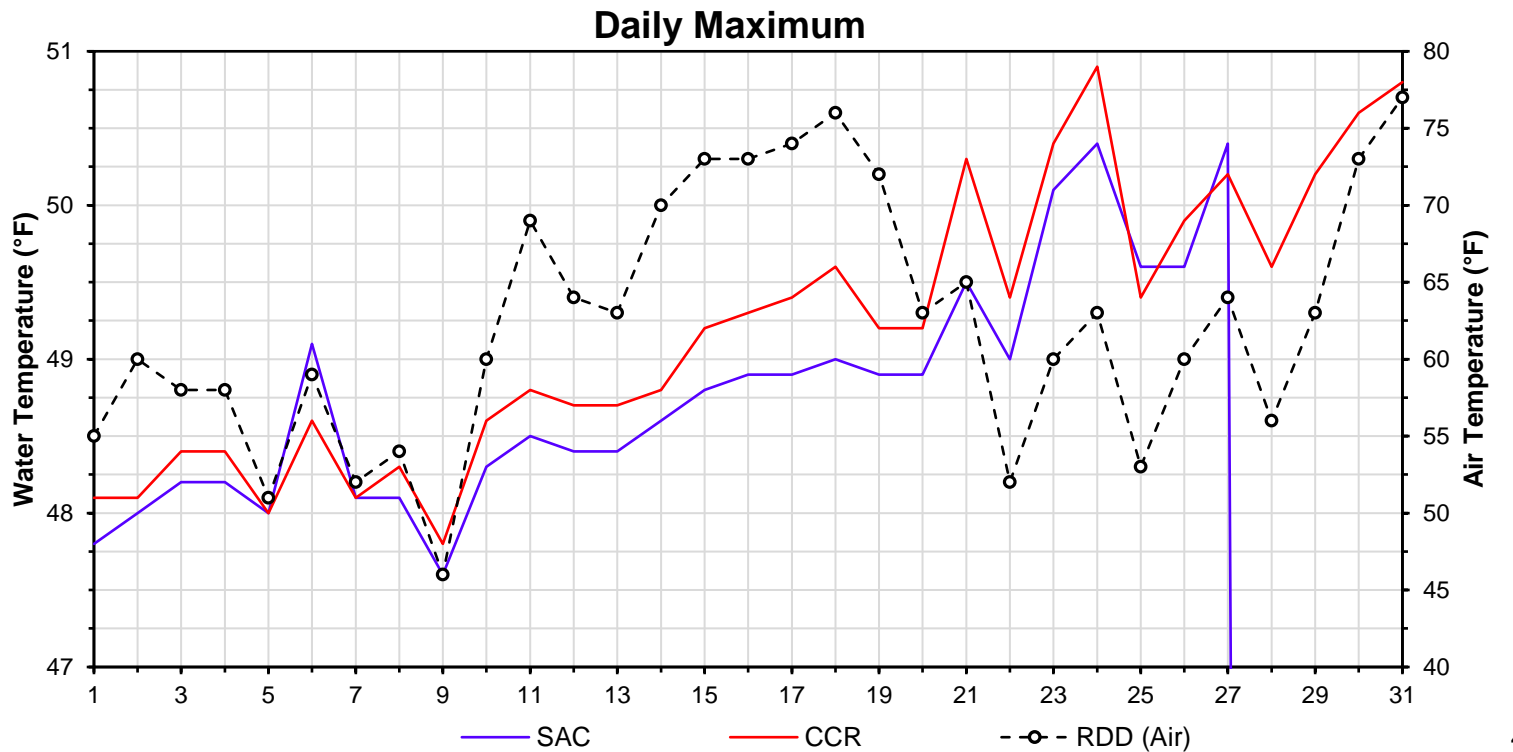
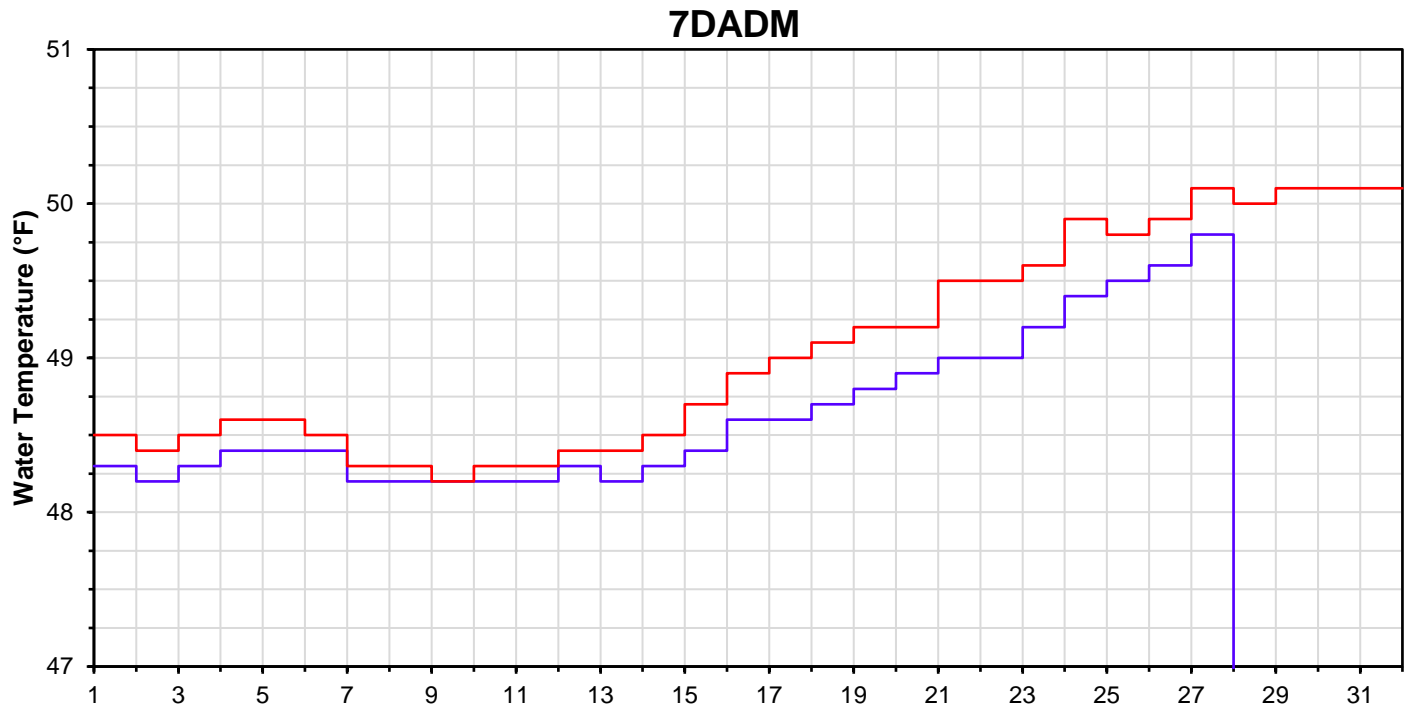
³ NFH is only reported in October, November and December

DATE	Daily Max		7DADM ¹		DAT ²
	SAC	CCR	SAC	CCR	BSF
03/01	47.8	48.1	48.3	48.5	48.2
03/02	48.0	48.1	48.2	48.4	48.3
03/03	48.2	48.4	48.3	48.5	48.8
03/04	48.2	48.4	48.4	48.6	48.8
03/05	48.0	48.0	48.4	48.6	48.3
03/06	49.1	48.6	48.4	48.5	49.3
03/07	48.1	48.1	48.2	48.3	49.1
03/08	48.1	48.3	48.2	48.3	48.5
03/09	47.6	47.8	48.2	48.2	47.8
03/10	48.3	48.6	48.2	48.3	48.3
03/11	48.5	48.8	48.2	48.3	48.6
03/12	48.4	48.7	48.3	48.4	48.7
03/13	48.4	48.7	48.2	48.4	48.5
03/14	48.6	48.8	48.3	48.5	48.5
03/15	48.8	49.2	48.4	48.7	48.8
03/16	48.9	49.3	48.6	48.9	49.1
03/17	48.9	49.4	48.6	49.0	49.3
03/18	49.0	49.6	48.7	49.1	49.6
03/19	48.9	49.2	48.8	49.2	49.6
03/20	48.9	49.2	48.9	49.2	49.8
03/21	49.5	50.3	49.0	49.5	50.1
03/22	49.0	49.4	49.0	49.5	49.6
03/23	50.1	50.4	49.2	49.6	50.3
03/24	50.4	50.9	49.4	49.9	50.5
03/25	49.6	49.4	49.5	49.8	49.9
03/26	49.6	49.9	49.6	49.9	50.4
03/27	50.4	50.2	49.8	50.1	51.1
03/28	-	49.6	-	50.0	49.4
03/29	-	50.2	-	50.1	50.7
03/30	-	50.6	-	50.1	50.7
03/31	-	50.8	-	50.1	51.1

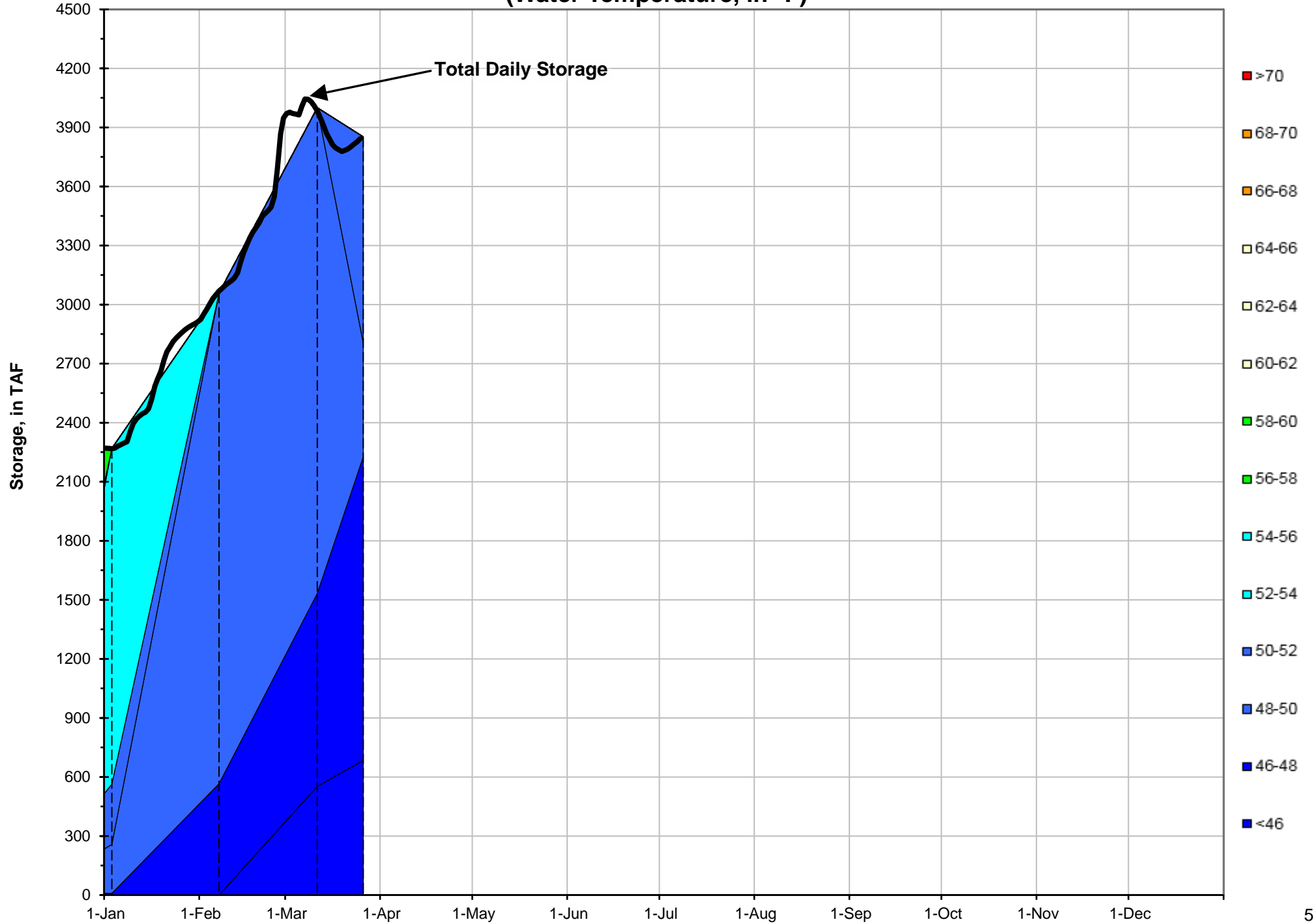
Notes

¹ 7DADM = 7-Day Average
Daily Maximum

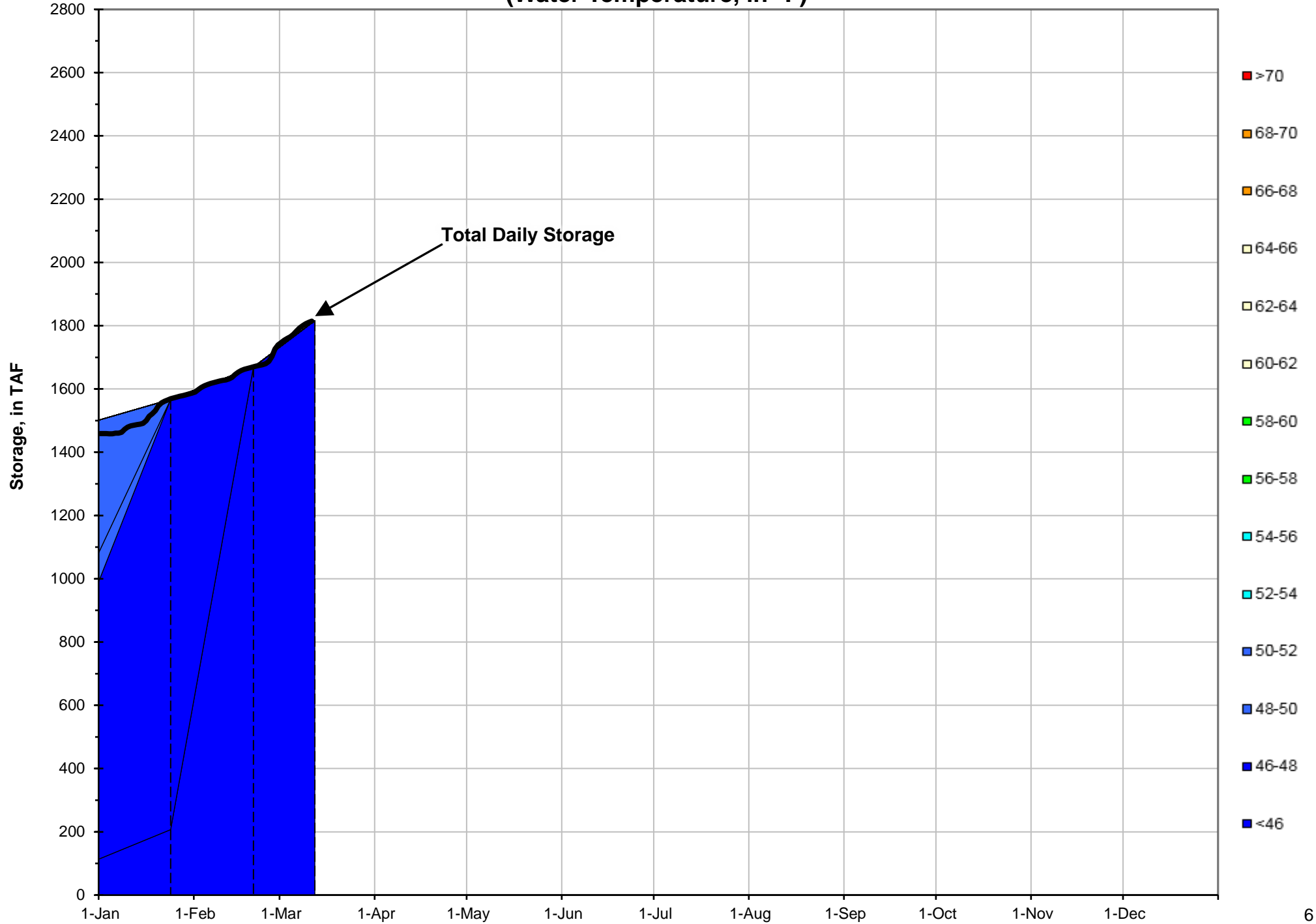
² DAT = Daily Average
Temperature



Shasta Lake Isothermobaths - 2019 (Water Temperature, in °F)



Trinity Lake Isothermobaths - 2019 (Water Temperature, in °F)



Whiskeytown Lake Isothermobaths - 2019 (Water Temperature, in °F)

