

# Northern CVP Water Temperature Report

## March - 2018

Page	Description
1	- Mean Daily Water Temperature, Release Flow Rates and Air Temperatures with Monthly Averages
2	- Redding 10-Day Forecasted Air Temperatures
3	- Sacramento River Mean Daily Water Temperature, Air Temperature and 10-Day Forecasted Air Temperature Plot - Water Temperature Measuring Station Details - Temperature Control Point Details
4	- Daily Maximum and 7DADM
5	- Shasta Lake Isothermobaths Plot
6	- Trinity Lake Isothermobaths Plot
7	- Whiskeytown Lake Isothermobaths Plot
x	- <a href="#">TCD Configuration</a> (External Link)



All Data in this Report is Preliminary and Subject to Change

DATE	Mean Daily Water Temperatures (°F)													Mean Daily Release (CFS)			Mean Daily Air Temperatures (°F)					
	TCD <sup>1</sup>	SHD	SPP <sup>1</sup>	KWK	SAC	CCR	BSF <sup>2</sup>	JLF	BND	RDB	IGO	LWS	----- <sup>3</sup>	Shasta Generation	Spring Creek P.P.	Keswick Total	RDD	BSF	RDB	LWS		
Feb	50.8	50.0	48.9	50.1	50.1	50.3	50.1	49.9	50.0	50.1	47.4	44.6	-	3267	19	3500	51.2	48.0	51.2	39.3		
03/01	49.7	49.0	47.9	49.0	48.8	49.0	48.8	48.5	48.6	48.3	?	46.2	43.6	-	3198	14	3141	↑	47.0	48.5	48.3	37.2
03/02	49.9	48.8	48.2	48.9	48.6	48.6	48.1	48.2	48.3	48.6	45.4	43.5	-	3019	14	3114	↓	41.5	41.3	42.6	33.7	
03/03	49.5	48.8	47.8	48.8	48.8	48.9	48.4	48.2	48.3	48.5	46.0	43.7	-	2729	14	3115		43.0	42.1	42.8	34.5	
03/04	49.5	48.9	47.8	48.7	48.6	49.0	48.8	48.8	48.8	49.0	46.4	44.2	-	3010	14	3114		45.0	42.5	43.3	37.5	
03/05	50.0	49.0	47.7	48.8	48.8	49.2	48.6	48.7	48.9	49.4	46.3	44.3	-	3101	14	3117		46.0	42.8	46.2	40.5	
03/06	50.1	49.0	47.6	49.0	49.2	49.8	49.6	49.7	49.8	49.9	46.9	44.4	-	3138	14	3116		51.0	46.9	50.6	42.6	
03/07	49.6	48.9	47.8	49.3	49.4	49.8	50.5	50.8	51.1	51.1	47.1	44.9	-	3018	14	3115		54.5	52.0	54.5	45.3	
03/08	49.8	48.9	48.2	49.5	49.7	?	50.5	51.3	51.9	52.1	52.2	48.1	45.7	-	3006	14	3114		56.5	54.6	55.6	45.7
03/09	49.9	48.8	47.7	49.7	49.8	50.5	51.2	51.7	51.9	52.5	47.7	46.0	-	3149	27	3114		55.0	51.2	52.8	47.6	
03/10	50.0	48.9	47.6	49.8	50.2	50.9	51.7	52.0	52.2	52.7	47.9	46.3	-	3115	14	3115		57.0	51.8	54.3	48.0	
03/11	49.5	48.9	47.3	49.8	50.1	51.0	52.1	52.8	52.9	53.5	47.8	?	46.4	-	2680	287	3134		55.5	52.8	55.2	48.8
03/12	49.5	48.8	47.6	49.9	50.0	50.6	52.2	53.2	53.6	54.2	47.4	46.3	-	2975	34	3144		55.0	55.1	56.5	47.4	
03/13	49.2	?	48.8	47.6	49.6	49.8	50.7	52.5	53.4	53.8	54.6	48.4	47.0	-	2922	22	3138		53.5	56.8	56.8	49.5
03/14	49.5	?	48.9	47.0	49.6	49.7	50.1	50.4	50.8	51.2	52.5	47.4	47.6	-	971	411	3245		48.5	47.2	48.7	42.1
03/15	49.5	48.6	47.2	49.3	49.0	49.2	48.8	49.1	49.3	49.7	46.4	46.2	-	2575	552	3163		44.0	43.8	44.8	34.8	
03/16	49.3	48.8	47.3	48.9	49.0	49.4	48.1	48.1	48.0	48.6	46.8	47.2	-	2406	423	3095		48.0	45.4	46.2	38.1	
03/17	49.4	48.9	47.3	48.8	49.1	49.7	49.1	49.4	49.4	49.4	46.9	47.7	-	2050	259	3094		47.0	45.0	45.3	39.8	
03/18	49.3	48.8	47.8	48.7	49.0	49.7	49.9	50.2	50.3	50.4	47.1	47.7	-	3084	32	3094		48.0	47.0	47.0	41.4	
03/19	49.3	48.7	47.8	49.2	49.5	50.2	50.7	51.0	51.1	51.5	47.7	47.8	-	2782	14	3094		51.0	48.8	51.5	44.8	
03/20	49.4	48.8	47.7	49.6	49.4	49.9	50.9	51.5	51.7	52.0	47.3	47.4	-	3134	47	3043		52.0	49.8	50.9	42.5	
03/21	49.5	48.8	47.8	49.4	49.6	50.1	50.5	50.9	51.0	51.6	47.9	48.1	-	2631	22	2944		55.0	53.1	53.8	47.8	
03/22	49.1	48.6	47.5	49.5	50.1	50.9	52.4	52.5	52.6	53.2	49.3	48.5	-	2664	357	2944		50.0	55.7	56.5	45.7	
03/23	49.2	48.4	48.0	49.2	49.2	49.5	49.5	50.0	50.3	51.6	46.9	47.2	-	2181	368	2995		46.5	48.0	49.1	38.5	
03/24	49.4	48.6	48.6	49.0	48.9	49.3	49.0	49.3	49.5	50.1	47.1	47.4	-	2699	24	3043		44.5	47.1	48.5	36.6	
03/25	49.4	48.8	48.1	48.9	49.3	50.0	49.7	49.7	49.6	49.9	47.5	47.9	-	1743	639	3046		49.0	47.7	48.2	39.6	
03/26	49.9	49.2	48.3	49.1	49.4	50.1	50.3	50.6	50.8	51.2	48.0	48.0	-	2538	375	3090		52.5	50.5	52.5	43.0	
03/27	49.8	49.1	48.3	49.4	49.9	50.8	51.7	52.1	52.2	52.4	49.0	48.2	-	1909	623	3049		64.5	61.0	62.1	48.2	
03/28	50.5	49.7	49.0	50.0	50.5	51.6	53.6	54.4	54.6	54.9	49.8	48.6	-	3209	14	3044	↑	70.5	67.0	68.3	53.3	
03/29	50.8	49.5	48.8	50.5	51.0	52.1	54.5	55.6	56.0	56.7	49.7	48.9	-	3308	18	3043		71.0	66.0	67.9	54.1	
03/30	50.6	49.8	48.8	50.8	51.3	52.2	54.1	55.2	55.7	57.0	49.6	49.2	-	2346	14	3042		62.5	59.5	62.8	53.9	
03/31	50.5	49.5	48.8	50.9	51.5	52.6	54.7	55.7	56.0	57.0	50.0	49.7	-	2474	14	3044		63.5	62.2	63.9	54.8	
Mar	49.7	48.9	47.9	49.4	49.6	50.2	50.7	51.1	51.3	51.7	47.6	46.8	-	2702	152	3087		52.5	51.1	52.5	43.8	
														Total CFS	83764	4702	95703					
														Total AF	166142	9326	189823					

Legend

- ? = 1-9 hours of data missing (Average includes estimations)
- ! = 10 or more hours of data missing (Average not calculated)
- # = Station out of service
- ↑ = Record high air temperature
- ↓ = Record low air temperature
- = Monthly Averages

Notes

- <sup>1</sup> Temperatures are weighted averages based on individual penstock flow and temperature
- Highlighted cells in the TCD column indicate a TCD change was made on that day
- <sup>2</sup> Current control point (see page 3 for more details)
- <sup>3</sup> Column not used this month

D A T E	Redding (RDD) Daily Air Temperatures (°F)																																			
	Actual			Forecasted																																
	Previous Day			Current Day			1 Day			2 Days			3 Days			4 Days			5 Days			6 Days			7 Days			8 Days			9 Days			10 Days		
	↓	↑	Avg	↓	↑	Avg	↓	↑	Avg	↓	↑	Avg	↓	↑	Avg	↓	↑	Avg	↓	↑	Avg	↓	↑	Avg	↓	↑	Avg	↓	↑	Avg	↓	↑	Avg	↓	↑	Avg
03/01	31	51	41.0	46	53	49.5	31	48	39.5	34	50	42.0	29	52	40.5	29	56	42.5	31	63	47.0	34	60	47.0	47	62	54.5	47	60	53.5	48	65	56.5	42	68	55.0
03/02	38	56	47.0	31	48	39.5	33	50	41.5	32	53	42.5	30	59	44.5	32	62	47.0	35	57	46.0	38	59	48.5	46	67	56.5	46	68	57.0	44	71	57.5	46	69	57.5
03/03	<b>31</b>	52	41.5	37	48	42.5	32	51	41.5	31	60	45.5	32	64	48.0	36	64	50.0	44	59	51.5	44	60	52.0	46	60	53.0	44	62	53.0	45	62	53.5	45	61	53.0
03/04	37	49	43.0	38	52	45.0	31	58	44.5	34	66	50.0	39	63	51.0	44	58	51.0	44	59	51.5	39	62	50.5	42	64	53.0	46	64	55.0	49	60	54.5	45	61	53.0
03/05	37	53	45.0	30	63	46.5	33	68	50.5	38	64	51.0	44	59	51.5	44	61	52.5	42	62	52.0	42	63	52.5	47	58	52.5	44	60	52.0	46	66	56.0	44	70	57.0
03/06	29	63	46.0	34	69	51.5	38	65	51.5	44	61	52.5	42	62	52.0	40	62	51.0	43	60	51.5	42	60	51.0	46	56	51.0	42	59	50.5	40	63	51.5	43	62	52.5
03/07	33	69	51.0	42	67	54.5	44	60	52.0	42	60	51.0	40	66	53.0	42	66	54.0	44	65	54.5	45	58	51.5	39	60	49.5	41	63	52.0	43	66	54.5	43	63	53.0
03/08	41	68	54.5	51	63	57.0	46	64	55.0	44	66	55.0	44	67	55.5	44	67	55.5	46	63	54.5	44	57	50.5	45	58	51.5	42	61	51.5	42	63	52.5	43	67	55.0
03/09	49	64	56.5	45	64	54.5	45	67	56.0	45	67	56.0	49	64	56.5	46	61	53.5	43	57	50.0	40	57	48.5	40	61	50.5	46	65	55.5	41	64	52.5	43	64	53.5
03/10	45	65	55.0	46	69	57.5	42	73	57.5	47	66	56.5	49	61	55.0	39	54	46.5	38	55	46.5	37	58	47.5	41	61	51.0	43	61	52.0	43	65	54.0	43	68	55.5
03/11	45	69	57.0	40	73	56.5	46	67	56.5	49	60	54.5	41	56	48.5	41	53	47.0	38	57	47.5	36	59	47.5	41	66	53.5	44	66	55.0	40	64	52.0	42	66	54.0
03/12	38	73	55.5	41	66	53.5	51	58	54.5	38	54	46.0	37	53	45.0	37	56	46.5	35	61	48.0	37	62	49.5	42	67	54.5	47	64	55.5	45	64	54.5	43	67	55.0
03/13	41	69	55.0	48	60	54.0	40	54	47.0	35	51	43.0	36	53	44.5	34	56	45.0	35	58	46.5	35	61	48.0	42	65	53.5	45	69	57.0	47	71	59.0	46	68	57.0
03/14	46	61	53.5	44	56	50.0	36	50	43.0	36	54	45.0	33	56	44.5	35	57	46.0	35	61	48.0	38	59	48.5	45	66	55.5	49	66	57.5	46	67	56.5	41	71	56.0
03/15	42	55	48.5	41	49	45.0	36	53	44.5	33	56	44.5	34	57	45.5	35	61	48.0	38	60	49.0	41	59	50.0	43	63	53.0	46	67	56.5	45	70	57.5	47	73	60.0
03/16	41	47	44.0	41	52	46.5	34	55	44.5	34	58	46.0	35	61	48.0	37	63	50.0	39	59	49.0	42	59	50.5	41	58	49.5	39	65	52.0	44	70	57.0	45	76	60.5
03/17	39	57	48.0	38	55	46.5	34	58	46.0	35	65	50.0	37	59	48.0	44	58	51.0	43	56	49.5	36	57	46.5	45	59	52.0	40	64	52.0	43	69	56.0	44	73	58.5
03/18	37	57	47.0	38	59	48.5	36	65	50.5	40	58	49.0	44	60	52.0	45	53	49.0	35	55	45.0	35	59	47.0	40	62	51.0	46	70	58.0	48	75	61.5	50	78	64.0
03/19	37	59	48.0	37	65	51.0	40	61	50.5	44	61	52.5	43	56	49.5	36	52	44.0	35	55	45.0	35	59	47.0	41	65	53.0	48	74	61.0	50	76	63.0	47	71	59.0
03/20	36	66	51.0	48	63	55.5	45	61	53.0	47	59	53.0	34	52	43.0	34	54	44.0	33	60	46.5	36	64	50.0	44	70	57.0	52	80	66.0	52	78	65.0	50	77	63.5
03/21	48	56	52.0	49	60	54.5	47	60	53.5	36	53	44.5	36	53	44.5	34	57	45.5	31	64	47.5	36	71	53.5	45	74	59.5	51	79	65.0	51	77	64.0	50	76	63.0
03/22	49	61	55.0	39	62	50.5	35	54	44.5	36	52	44.0	34	57	45.5	32	61	46.5	36	68	52.0	40	73	56.5	48	78	63.0	53	79	66.0	54	77	65.5	51	75	63.0
03/23	39	61	50.0	36	55	45.5	34	52	43.0	34	58	46.0	33	63	48.0	38	69	53.5	43	76	59.5	46	77	61.5	49	77	63.0	51	76	63.5	49	73	61.0	47	71	59.0
03/24	35	58	46.5	34	53	43.5	34	58	46.0	33	64	48.5	38	71	54.5	44	77	60.5	46	82	64.0	47	79	63.0	49	80	64.5	44	73	58.5	43	68	55.5	41	70	55.5
03/25	33	56	44.5	41	56	48.5	33	65	49.0	39	77	58.0	45	80	62.5	46	81	63.5	47	77	62.0	47	77	62.0	50	78	64.0	51	75	63.0	46	74	60.0	47	74	60.5
03/26	40	58	49.0	38	66	52.0	43	78	60.5	49	81	65.0	47	82	64.5	47	77	62.0	47	77	62.0	44	76	60.0	48	74	61.0	52	70	61.0	54	70	62.0	48	73	60.5
03/27	38	67	52.5	51	78	64.5	48	82	65.0	48	84	66.0	48	80	64.0	49	77	63.0	45	76	60.5	44	74	59.0	50	66	58.0	49	72	60.5	50	72	61.0	47	77	62.0
03/28	50	79	64.5	60	83	71.5	48	84	66.0	48	82	65.0	50	78	64.0	50	77	63.5	50	78	64.0	50	75	62.5	52	74	63.0	52	77	64.5	53	72	62.5	47	75	61.0
03/29	59	<b>82</b>	70.5	60	82	71.0	49	81	65.0	52	80	66.0	50	80	65.0	50	80	65.0	50	77	63.5	49	75	62.0	52	79	65.5	52	69	60.5	53	70	61.5	46	72	59.0
03/30	59	83	71.0	46	81	63.5	51	80	65.5	50	80	65.0	50	78	64.0	51	78	64.5	50	70	60.0	50	69	59.5	51	67	59.0	51	69	60.0	50	74	62.0	46	74	60.0
03/31	45	80	62.5	49	80	64.5	49	76	62.5	46	78	62.0	52	76	64.0	49	71	60.0	51	68	59.5	47	72	59.5	51	74	62.5	49	75	62.0	48	77	62.5	46	80	63.0

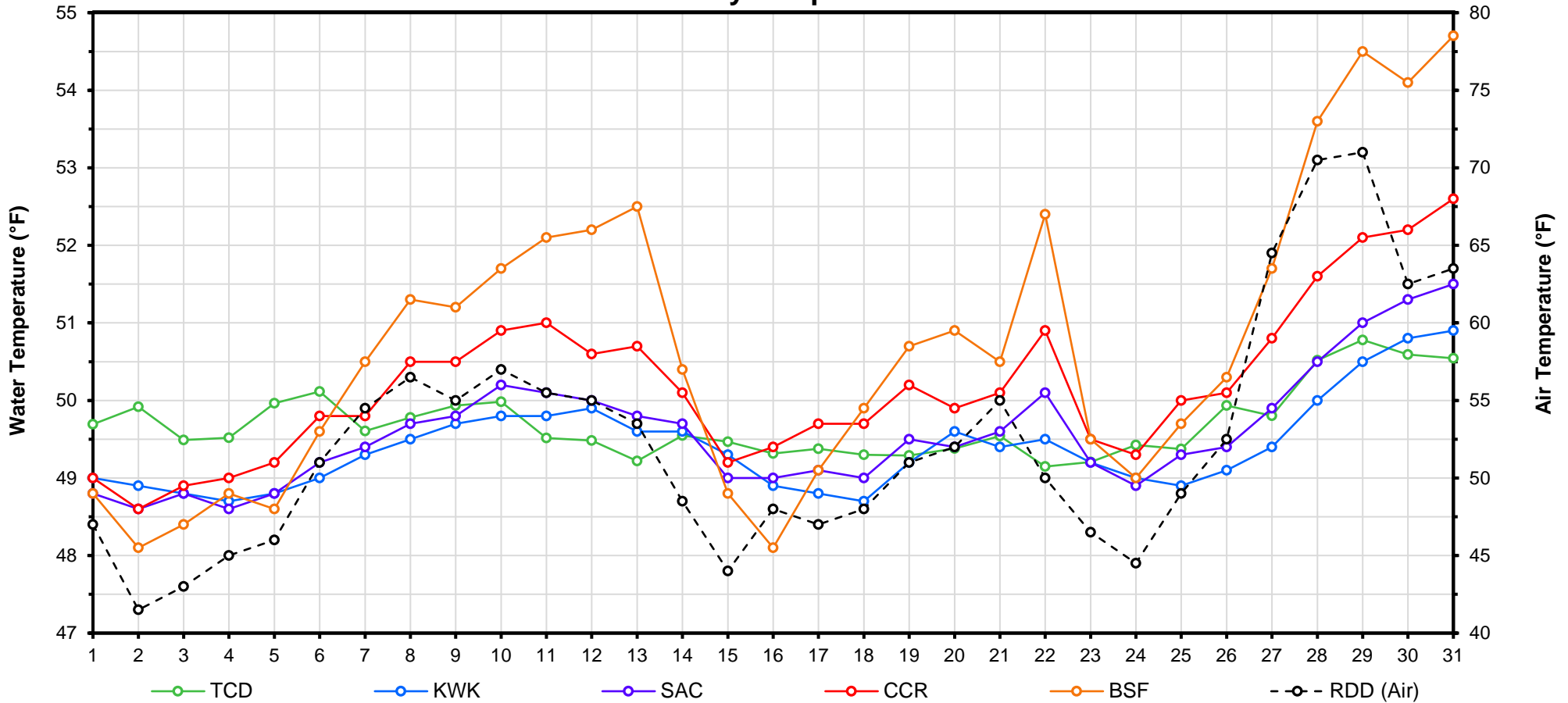
Web Links

- [10-Day Min/Max Forecast](#)
- [Previous Days Min/Max Actuals](#)

Legend

- NR = Forecasted temperatures not recorded
- 100** = Previous day actual temperatures in red and bolded indicate a record temperature for that date

# Mean Daily Temperatures



Station Details			
Code	Body of Water	Location <sup>1</sup>	CDEC Link
TCD	N/A	Shasta Power Plant	N/A
SHD	Sacramento River	0.3 miles downstream of Shasta Power Plant	<a href="#">Click Here</a>
SPP	N/A	Spring Creek Power Plant	N/A
KWK	Sacramento River	0.8 miles downstream of Keswick Dam	<a href="#">Click Here</a>
SAC	Sacramento River	4.8 miles downstream of Keswick Dam	<a href="#">Click Here</a>
CCR	Sacramento River	9.7 miles downstream of Keswick Dam	<a href="#">Click Here</a>
BSF	Sacramento River	25 miles downstream of Keswick Dam	<a href="#">Click Here</a>
JLF	Sacramento River	34 miles downstream of Keswick Dam	<a href="#">Click Here</a>
BND	Sacramento River	41 miles downstream of Keswick Dam	<a href="#">Click Here</a>
RDB	Sacramento River	58 miles downstream of Keswick Dam	<a href="#">Click Here</a>
IGO	Clear Creek	7.3 miles downstream of Whiskeytown Dam	<a href="#">Click Here</a>
LWS	Trinity River	1.1 miles downstream of Lewiston Dam	<a href="#">Click Here</a>
DGC <sup>2</sup>	Trinity River	19 miles downstream of Lewiston Dam	<a href="#">Click Here</a>
NFH <sup>3</sup>	Trinity River	38 miles downstream of Lewiston Dam	<a href="#">Click Here</a>

Temperature Control Point		
Point	Temp. (°F)	Date Range
<b>BSF</b>	<b>56.0</b>	<b>06/01/17 - Current</b>

## Notes

<sup>1</sup> Distances are approximate

<sup>2</sup> DGC is only reported in September

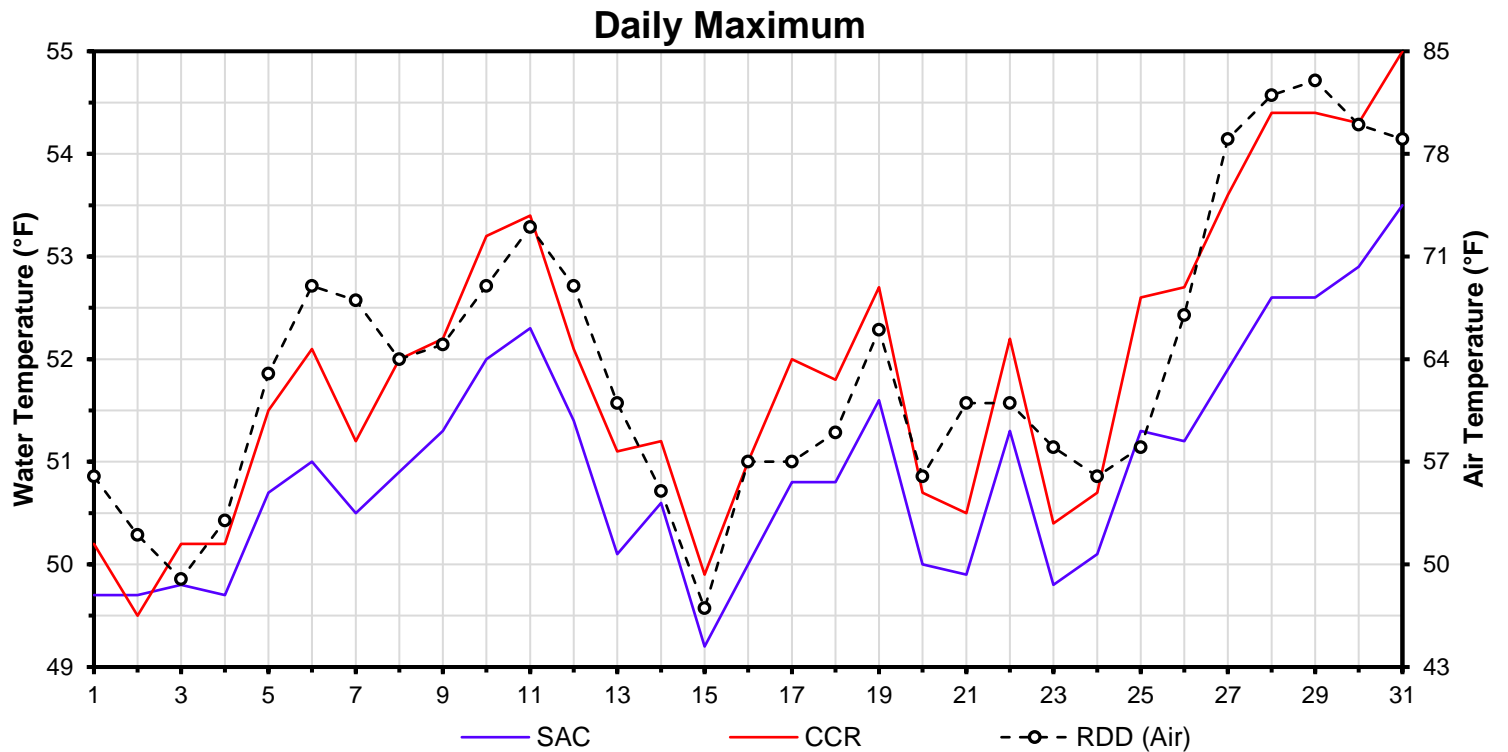
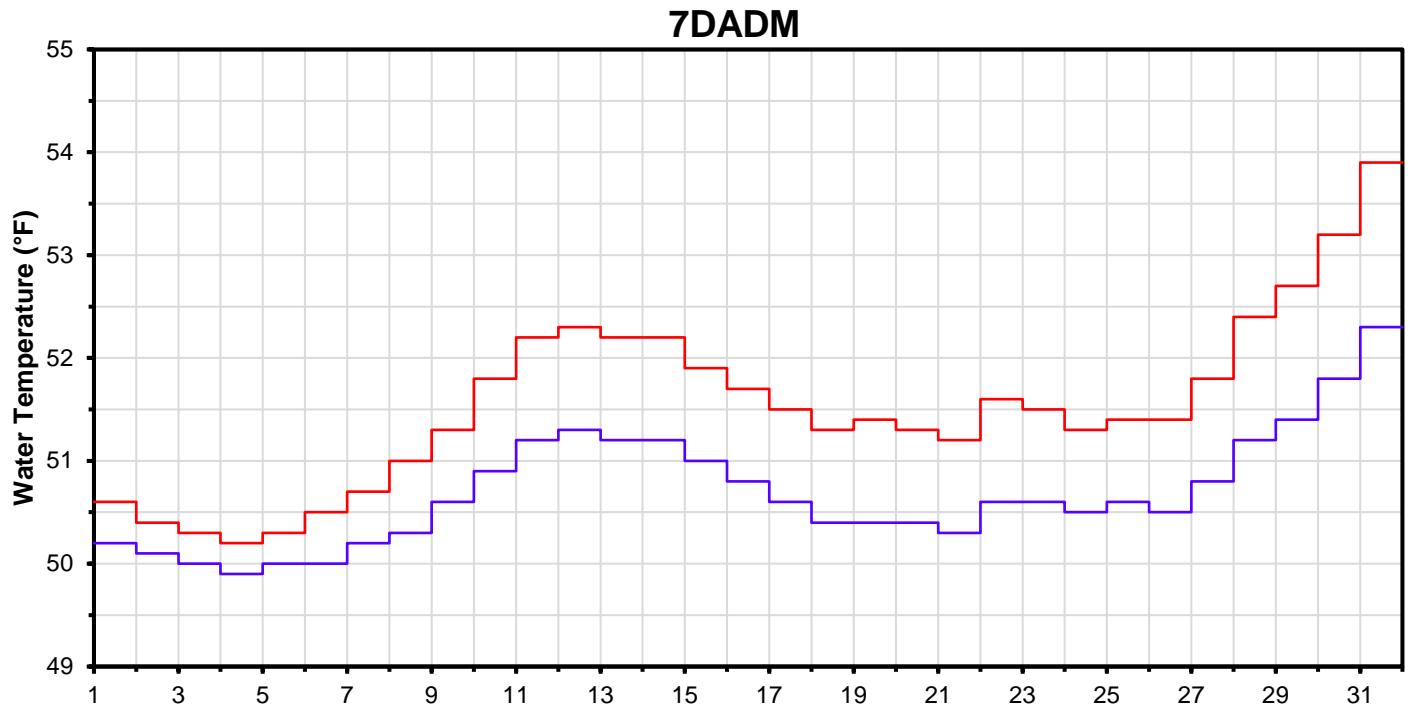
<sup>3</sup> NFH is only reported in October, November and December

DATE	Daily Max		7DADM <sup>1</sup>		DAT <sup>2</sup>
	SAC	CCR	SAC	CCR	BSF
03/01	49.7	50.2	50.2	50.6	48.8
03/02	49.7	49.5	50.1	50.4	48.1
03/03	49.8	50.2	50.0	50.3	48.4
03/04	49.7	50.2	49.9	50.2	48.8
03/05	50.7	51.5	50.0	50.3	48.6
03/06	51.0	52.1	50.0	50.5	49.6
03/07	50.5	51.2	50.2	50.7	50.5
03/08	50.9	52.0	50.3	51.0	51.3
03/09	51.3	52.2	50.6	51.3	51.2
03/10	52.0	53.2	50.9	51.8	51.7
03/11	52.3	53.4	51.2	52.2	52.1
03/12	51.4	52.1	51.3	52.3	52.2
03/13	50.1	51.1	51.2	52.2	52.5
03/14	50.6	51.2	51.2	52.2	50.4
03/15	49.2	49.9	51.0	51.9	48.8
03/16	50.0	51.0	50.8	51.7	48.1
03/17	50.8	52.0	50.6	51.5	49.1
03/18	50.8	51.8	50.4	51.3	49.9
03/19	51.6	52.7	50.4	51.4	50.7
03/20	50.0	50.7	50.4	51.3	50.9
03/21	49.9	50.5	50.3	51.2	50.5
03/22	51.3	52.2	50.6	51.6	52.4
03/23	49.8	50.4	50.6	51.5	49.5
03/24	50.1	50.7	50.5	51.3	49.0
03/25	51.3	52.6	50.6	51.4	49.7
03/26	51.2	52.7	50.5	51.4	50.3
03/27	51.9	53.6	50.8	51.8	51.7
03/28	52.6	54.4	51.2	52.4	53.6
03/29	52.6	54.4	51.4	52.7	54.5
03/30	52.9	54.3	51.8	53.2	54.1
03/31	53.5	55.0	52.3	53.9	54.7

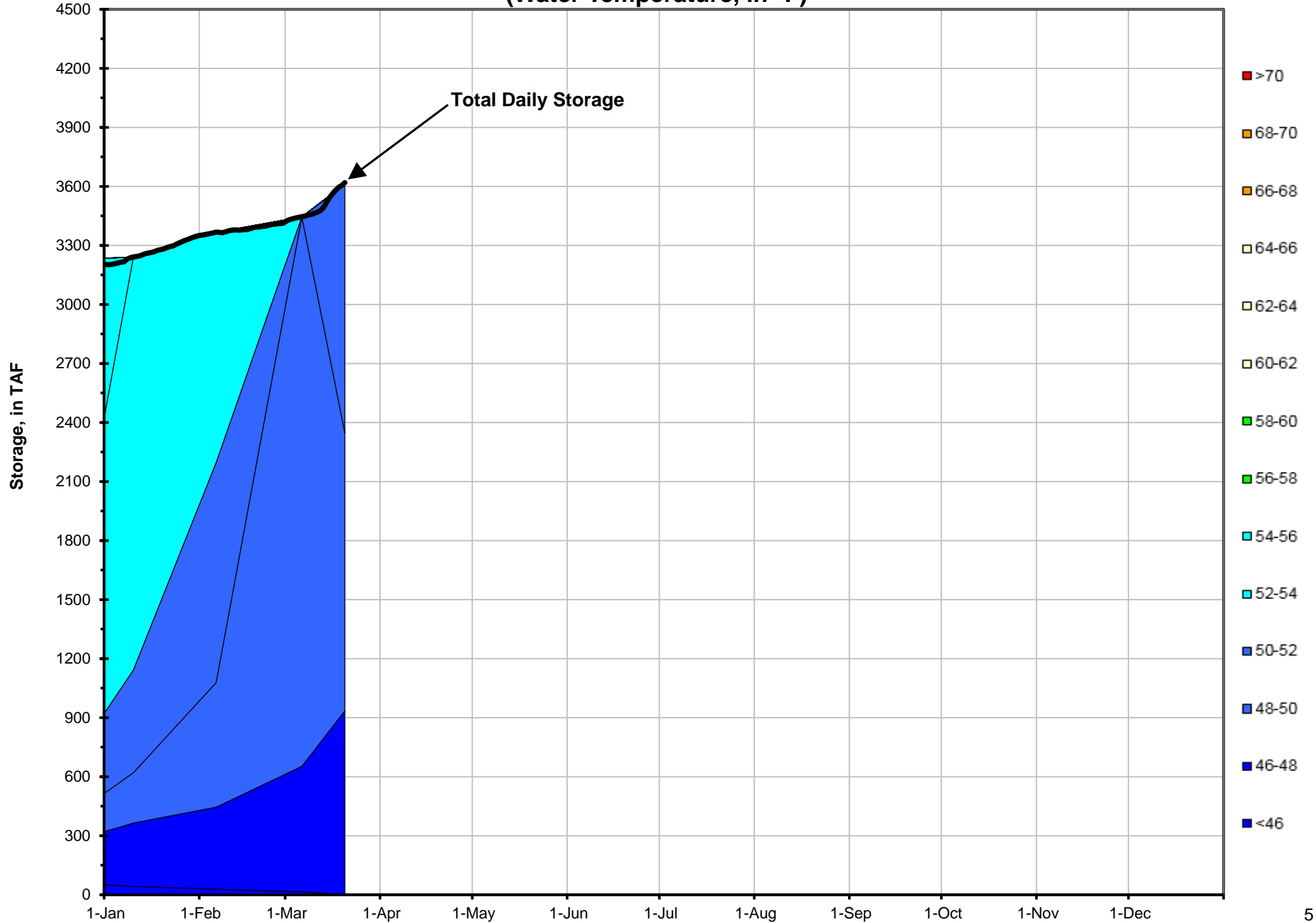
**Notes**

<sup>1</sup> 7DADM = 7-Day Average  
Daily Maximum

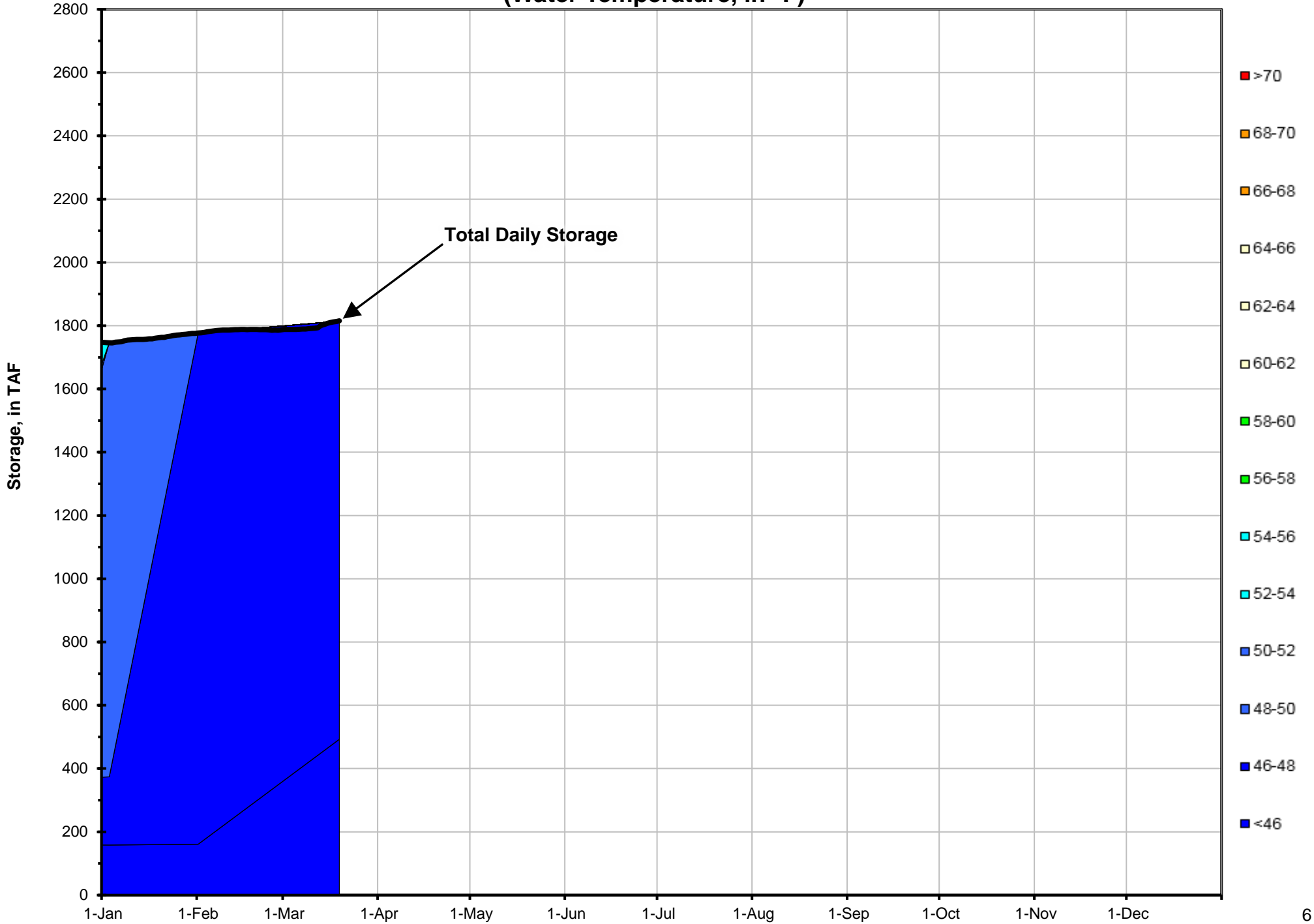
<sup>2</sup> DAT = Daily Average  
Temperature



### Shasta Lake Isothermobaths - 2018 (Water Temperature, in °F)



### Trinity Lake Isothermobaths - 2018 (Water Temperature, in °F)



### Whiskeytown Lake Isothermobaths - 2018 (Water Temperature, in °F)

