

# Northern CVP Water Temperature Report

## March - 2017

Page	Description
1	- Mean Daily Water Temperature, Release Flow Rates and Air Temperatures with Monthly Averages
2	- Redding 10-Day Forecasted Air Temperatures
3	- Sacramento River Mean Daily Water Temperature, Air Temperature and 10-Day Forecasted Air Temperature Plot
	- Water Temperature Measuring Station Details
	- Temperature Control Point Details
4	- Lake Shasta Isothermalbaths Plot
5	- Daily Maximum and 7DADM
x	- <a href="#">TCD Configuration</a> (External Link)



All Data in this Report is Preliminary and Subject to Change

DATE	Mean Daily Water Temperatures (°F)													Mean Daily Release (CFS)			Mean Daily Air Temperatures (°F)			
	TCD <sup>1</sup>	SHD	SPP <sup>1</sup>	KWK	SAC	CCR	BSF <sup>2</sup>	JLF	BND	RDB	IGO	LWS	----- <sup>3</sup>	Shasta Generation	Spring Creek P.P.	Keswick Total	RDD	BSF	RDB	LWS
Feb	47.5	47.0	46.6	47.2	47.3	47.5	48.0	48.1	48.3	48.4	48.1	45.1	-	14270	1205	20671	45.6	43.6	44.9	35.6
03/01	48.0	47.3	47.3	47.4	47.3	47.6	47.6	47.6	47.7	47.7	46.2	45.0	-	18613	3513	66365	51.0	46.3	48.8	39.3
03/02	48.0	47.4	47.3	47.5	47.4	47.7	47.8	47.8	48.0	48.0	46.6	44.9	-	19433	3534	56516	↓ 50.0	48.0	50.3	43.5
03/03	48.0	47.4	47.3	47.6	47.5	47.7	47.8	47.8	48.1	48.1	46.7	45.2	-	18909	1058	47139	49.0	48.2	50.6	42.3
03/04	47.8	? 47.3	47.3	47.6	47.5	47.7	48.0	48.0	48.3	48.5	47.1	45.6	-	18656	1051	40147	52.5	51.4	51.4	42.7
03/05	47.6	47.1	47.2	47.3	47.2	47.4	47.5	47.5	47.9	47.9	45.6	44.7	-	19005	865	33474	44.0	44.3	44.3	34.0
03/06	47.5	46.9	47.2	47.1	47.0	47.2	47.1	47.0	47.2	47.2	45.4	44.6	-	18880	1038	28177	45.0	46.1	46.3	36.3
03/07	? 47.4	46.8	47.1	47.0	46.9	47.2	47.3	47.3	47.5	47.7	46.4	45.1	-	15243	1645	22355	48.0	47.7	48.5	40.7
03/08	47.5	46.8	47.0	47.1	47.1	47.5	48.0	48.3	48.3	48.9	47.8	46.1	-	17999	1694	18958	58.0	55.5	56.2	49.0
03/09	47.6	46.8	47.2	47.1	47.1	47.5	48.3	48.9	49.1	49.7	48.1	46.8	-	16282	1792	15948	58.5	56.7	59.2	52.2
03/10	47.6	46.8	47.5	47.2	47.3	47.7	48.8	49.5	49.6	50.2	48.8	46.6	-	13566	1838	13659	63.5	59.5	60.4	53.3
03/11	47.6	46.8	47.4	47.3	47.4	47.9	49.1	49.9	50.1	50.7	48.3	46.3	-	11446	1474	12190	60.5	56.8	59.2	51.1
03/12	47.6	46.8	47.4	47.3	47.6	48.0	49.4	50.2	50.4	51.2	48.4	? 46.2	-	9599	1412	10960	64.0	58.5	60.7	51.2
03/13	47.6	46.7	47.4	47.4	47.6	48.1	49.5	50.4	50.7	51.7	48.5	46.2	-	7667	1460	9632	60.0	57.3	60.3	51.3
03/14	47.7	46.7	47.3	47.4	47.6	48.2	49.7	50.7	51.0	51.9	48.8	46.6	-	8523	695	9401	60.5	57.5	59.7	55.4
03/15	47.4	46.6	47.3	47.3	47.4	47.8	49.3	50.6	51.0	51.9	48.5	46.5	-	7245	1934	8109	58.5	55.9	57.8	49.7
03/16	47.2	46.5	47.5	47.2	47.3	47.8	49.4	50.3	50.5	51.2	48.7	47.0	-	6079	1692	7997	58.0	56.2	57.0	52.2
03/17	47.2	46.5	47.4	47.3	47.5	47.9	49.6	50.7	51.0	51.9	48.6	47.0	-	6497	1372	7928	59.0	57.4	60.2	50.9
03/18	47.1	46.5	47.4	47.3	47.4	47.8	49.6	51.0	51.4	52.3	49.2	46.9	-	6412	1368	7857	60.5	59.5	60.5	52.8
03/19	47.2	46.5	47.4	47.3	47.4	47.9	49.5	50.6	50.9	51.6	49.1	47.3	-	6703	1366	7697	62.0	58.4	58.7	54.5
03/20	47.1	46.4	47.4	47.3	47.4	47.8	49.5	50.7	51.0	51.6	49.0	46.9	-	6592	1441	7697	58.5	55.8	56.0	51.4
03/21	47.0	? 46.5	47.5	47.5	48.4	48.5	50.8	51.7	51.8	52.6	50.4	47.2	-	5997	1659	7702	60.5	58.4	58.8	52.3
03/22	47.2	46.5	48.0	47.7	48.3	48.1	50.6	51.3	51.9	52.7	49.4	47.3	-	4845	3192	7816	47.5	50.6	50.9	47.8
03/23	47.1	46.6	47.8	47.7	48.0	48.1	49.8	50.0	50.3	50.8	48.3	46.8	-	6213	2446	8944	49.0	49.2	50.3	43.6
03/24	47.6	47.0	47.9	47.8	48.7	48.1	49.7	49.9	50.2	50.5	49.1	!	-	6131	2875	9091	49.0	50.4	50.5	-
03/25	48.6	47.9	48.1	47.8	48.7	48.4	51.0	51.0	51.0	51.4	49.9	47.5	-	5675	3250	9141	54.0	54.2	55.0	47.5
03/26	48.9	47.9	48.2	48.6	48.9	48.7	50.5	50.8	51.3	51.7	49.4	46.1	-	6851	2855	8887	51.5	50.4	50.7	41.2
03/27	49.2	48.4	47.9	48.5	49.2	49.1	51.0	51.0	51.1	51.4	49.4	46.3	-	7480	1701	8886	53.5	53.1	53.5	45.3
03/28	49.5	48.6	48.0	49.1	49.5	49.6	51.3	51.8	52.0	52.6	50.0	46.7	-	7390	1713	8889	60.5	58.0	59.3	49.0
03/29	50.1	49.2	48.3	49.4	49.6	49.8	51.4	52.1	52.4	53.0	50.3	46.6	-	9551	44	8891	60.0	59.1	59.9	49.7
03/30	50.8	50.0	48.0	49.9	50.1	50.3	51.8	52.4	52.6	53.1	50.0	46.8	-	9117	199	8889	58.5	58.5	59.4	50.3
03/31	51.1	50.3	48.1	50.5	50.6	50.9	51.6	51.9	52.2	52.8	49.2	46.3	-	8778	239	8679	61.5	58.2	59.0	46.3
Mar	48.0	47.3	47.6	47.8	48.0	48.2	49.4	50.0	50.2	50.7	48.4	46.3	-	10690	1691	17033	55.7	54.1	55.3	47.6

Total CFS	331377	52415	528021
Total AF	657273	103963	1047308

Legend

- ? = 1-9 hours of data missing (Average includes estimations)
- ! = 10 or more hours of data missing (Average not calculated)
- # = Station out of service
- ↑ = Record high air temperature
- ↓ = Record low air temperature
- = Monthly Averages

Notes

- <sup>1</sup> Temperatures are weighted averages based on individual penstock flow and temperature
- Highlighted cells in the TCD column indicate a TCD change was made on that day
- <sup>2</sup> Current control point (see page 3 for more details)
- <sup>3</sup> Column not used this month

D A T E	Redding (RDD) Daily Air Temperatures (°F)																																			
	Actual			Forecasted																																
	Previous Day			Current Day			1 Day			2 Days			3 Days			4 Days			5 Days			6 Days			7 Days			8 Days			9 Days			10 Days		
	↓	↑	Avg	↓	↑	Avg	↓	↑	Avg	↓	↑	Avg	↓	↑	Avg	↓	↑	Avg	↓	↑	Avg	↓	↑	Avg	↓	↑	Avg	↓	↑	Avg	↓	↑	Avg	↓	↑	Avg
03/01	30	58	44.0	33	64	48.5	35	65	50.0	36	62	49.0	44	58	51.0	40	57	48.5	39	58	48.5	49	58	53.5	46	64	55.0	44	70	57.0	48	74	61.0	50	74	62.0
03/02	32	70	51.0	32	66	49.0	35	62	48.5	44	57	50.5	39	52	45.5	37	55	46.0	38	58	48.0	43	65	54.0	45	71	58.0	49	78	63.5	52	74	63.0	47	72	59.5
03/03	<b>32</b>	68	50.0	38	61	49.5	44	54	49.0	38	50	44.0	34	52	43.0	40	58	49.0	42	64	53.0	43	66	54.5	42	70	56.0	50	61	55.5	48	62	55.0	44	69	56.5
03/04	38	60	49.0	48	54	51.0	35	48	41.5	35	49	42.0	40	59	49.5	41	66	53.5	43	68	55.5	46	63	54.5	40	60	50.0	39	57	48.0	42	61	51.5	42	63	52.5
03/05	47	58	52.5	38	50	44.0	36	50	43.0	40	54	47.0	44	65	54.5	46	66	56.0	49	64	56.5	45	61	53.0	47	61	54.0	45	62	53.5	44	63	53.5	43	71	57.0
03/06	37	51	44.0	40	50	45.0	41	56	48.5	44	60	52.0	48	66	57.0	52	67	59.5	47	64	55.5	49	62	55.5	51	65	58.0	52	62	57.0	49	66	57.5	45	70	57.5
03/07	40	50	45.0	45	56	50.5	45	62	53.5	47	68	57.5	48	70	59.0	48	66	57.0	48	68	58.0	47	63	55.0	48	65	56.5	51	68	59.5	52	66	59.0	48	65	56.5
03/08	44	52	48.0	47	63	55.0	47	70	58.5	48	75	61.5	46	73	59.5	46	73	59.5	48	69	58.5	49	64	56.5	49	69	59.0	53	68	60.5	51	68	59.5	48	71	59.5
03/09	47	69	58.0	47	72	59.5	50	75	62.5	50	75	62.5	49	80	64.5	47	77	62.0	49	74	61.5	48	67	57.5	50	69	59.5	49	67	58.0	51	68	59.5	46	69	57.5
03/10	46	71	58.5	52	73	62.5	48	75	61.5	48	80	64.0	49	82	65.5	50	75	62.5	50	69	59.5	51	64	57.5	50	72	61.0	48	70	59.0	50	73	61.5	48	69	58.5
03/11	51	76	63.5	47	76	61.5	46	79	62.5	47	81	64.0	48	76	62.0	53	67	60.0	48	70	59.0	48	69	58.5	49	69	59.0	47	73	60.0	46	72	59.0	46	67	56.5
03/12	47	74	60.5	46	80	63.0	48	81	64.5	48	78	63.0	54	68	61.0	48	70	59.0	46	70	58.0	49	66	57.5	48	70	59.0	49	68	58.5	47	67	57.0	45	66	55.5
03/13	46	82	64.0	43	80	61.5	48	78	63.0	54	69	61.5	47	72	59.5	46	72	59.0	48	66	57.0	50	65	57.5	47	63	55.0	45	60	52.5	46	65	55.5	47	68	57.5
03/14	41	79	60.0	46	77	61.5	55	67	61.0	48	71	59.5	45	74	59.5	50	70	60.0	48	67	57.5	48	65	56.5	47	62	54.5	47	61	54.0	50	67	58.5	45	65	55.0
03/15	44	77	60.5	54	69	61.5	49	71	60.0	46	73	59.5	49	67	58.0	48	68	58.0	47	66	56.5	47	58	52.5	45	65	55.0	49	61	55.0	48	66	57.0	45	69	57.0
03/16	52	65	58.5	50	70	60.0	46	73	59.5	51	66	58.5	47	68	57.5	48	65	56.5	50	61	55.5	45	59	52.0	48	57	52.5	48	61	54.5	50	68	59.0	45	69	57.0
03/17	48	68	58.0	45	74	59.5	52	67	59.5	49	69	59.0	49	65	57.0	51	59	55.0	47	59	53.0	45	57	51.0	48	58	53.0	43	63	53.0	42	64	53.0	43	70	56.5
03/18	45	73	59.0	56	65	60.5	49	69	59.0	50	64	57.0	49	63	56.0	47	61	54.0	42	60	51.0	46	56	51.0	48	61	54.5	47	66	56.5	46	72	59.0	46	72	59.0
03/19	56	65	60.5	56	70	63.0	50	63	56.5	48	62	55.0	46	61	53.5	41	62	51.5	45	57	51.0	45	60	52.5	42	66	54.0	47	68	57.5	49	70	59.5	47	72	59.5
03/20	56	68	62.0	52	64	58.0	51	62	56.5	44	62	53.0	39	64	51.5	47	57	52.0	44	62	53.0	42	60	51.0	43	69	56.0	50	68	59.0	48	71	59.5	46	71	58.5
03/21	52	65	58.5	55	62	58.5	47	62	54.5	38	64	51.0	48	58	53.0	43	64	53.5	45	59	52.0	42	66	54.0	48	69	58.5	45	72	58.5	49	70	59.5	46	75	60.5
03/22	54	67	60.5	51	62	56.5	38	64	51.0	45	57	51.0	43	64	53.5	45	59	52.0	42	66	54.0	40	68	54.0	48	73	60.5	50	76	63.0	53	77	65.0	50	78	64.0
03/23	41	54	47.5	38	63	50.5	45	56	50.5	42	64	53.0	44	57	50.5	44	65	54.5	40	68	54.0	45	70	57.5	46	66	56.0	48	77	62.5	50	76	63.0	50	73	61.5
03/24	37	61	49.0	46	55	50.5	41	63	52.0	44	57	50.5	43	64	53.5	44	71	57.5	48	73	60.5	45	66	55.5	50	74	62.0	51	82	66.5	53	78	65.5	49	75	62.0
03/25	46	52	49.0	46	63	54.5	44	58	51.0	42	64	53.0	43	73	58.0	47	71	59.0	46	68	57.0	44	73	58.5	53	78	65.5	54	82	68.0	53	79	66.0	49	74	61.5
03/26	45	63	54.0	50	58	54.0	43	65	54.0	42	74	58.0	47	74	60.5	48	68	58.0	45	75	60.0	45	79	62.0	50	80	65.0	52	79	65.5	50	77	63.5	48	77	62.5
03/27	47	56	51.5	42	65	53.5	43	74	58.5	48	74	61.0	49	66	57.5	43	75	59.0	47	81	64.0	48	74	61.0	45	65	55.0	47	66	56.5	49	66	57.5	47	66	56.5
03/28	41	66	53.5	48	73	60.5	46	74	60.0	51	66	58.5	45	74	59.5	48	82	65.0	47	77	62.0	44	72	58.0	49	77	63.0	49	76	62.5	51	69	60.0	47	69	58.0
03/29	48	73	60.5	50	70	60.0	47	66	56.5	43	74	58.5	48	81	64.5	49	76	62.5	43	73	58.0	42	71	56.5	49	71	60.0	54	69	61.5	52	70	61.0	46	70	58.0
03/30	49	71	60.0	52	66	59.0	42	74	58.0	48	81	64.5	51	76	63.5	43	73	58.0	42	73	57.5	47	69	58.0	51	73	62.0	56	67	61.5	54	70	62.0	47	66	56.5
03/31	52	65	58.5	50	76	63.0	49	82	65.5	50	78	64.0	45	75	60.0	43	76	59.5	47	74	60.5	47	70	58.5	51	74	62.5	54	65	59.5	51	67	59.0	47	72	59.5

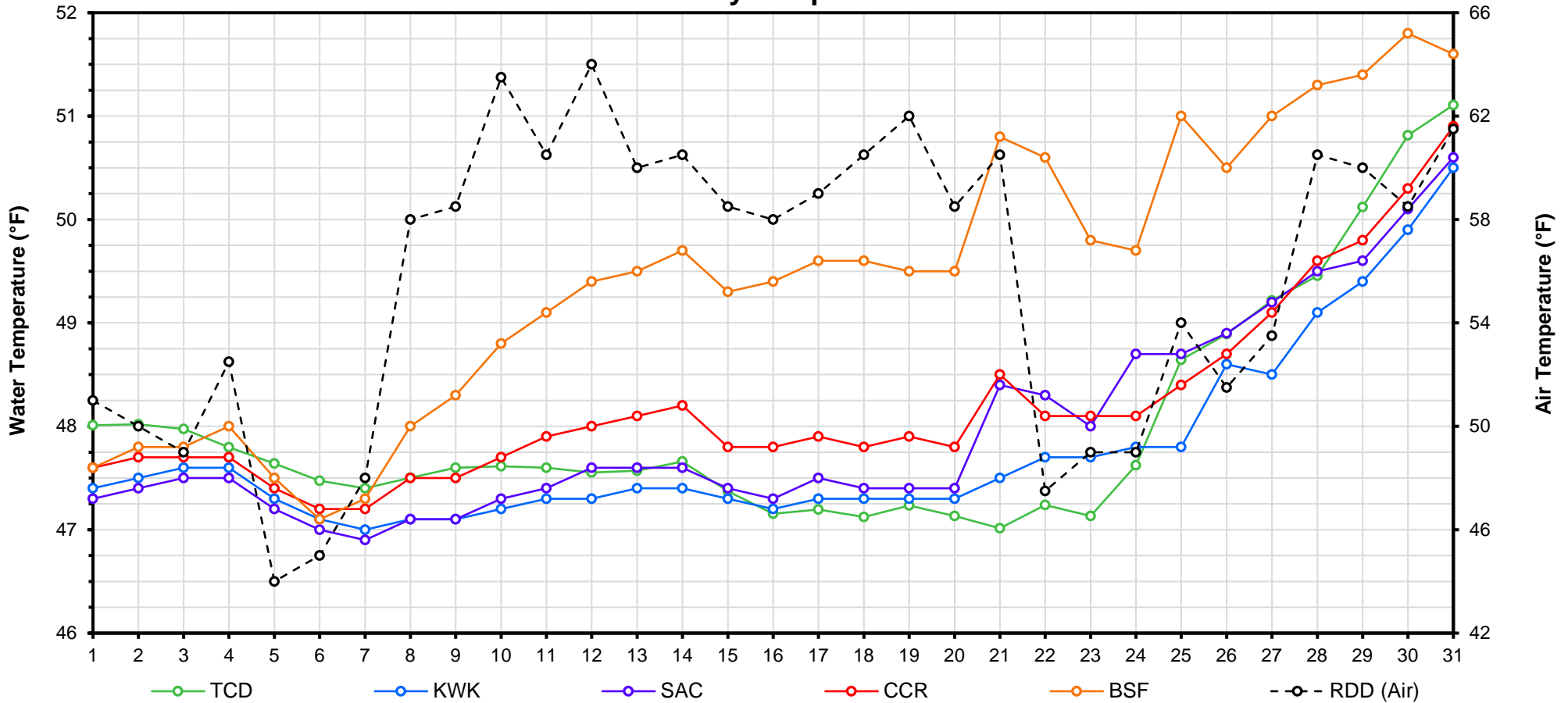
[Web Links](#)

[Legend](#)

[10-Day Min/Max Forecast](#)  
[Previous Days Min/Max Actuals](#)

NR = Forecasted temperatures not recorded  
**100** = Previous day actual temperatures in red and bolded indicate a record temperature for that date

# Mean Daily Temperatures



Station Details			
Code	Body of Water	Location <sup>1</sup>	CDEC Link
TCD	N/A	Shasta Power Plant	N/A
SHD	Sacramento River	0.3 miles downstream of Shasta Power Plant	<a href="#">Click Here</a>
SPP	N/A	Spring Creek Power Plant	N/A
KWK	Sacramento River	0.8 miles downstream of Keswick Dam	<a href="#">Click Here</a>
SAC	Sacramento River	4.8 miles downstream of Keswick Dam	<a href="#">Click Here</a>
CCR	Sacramento River	9.7 miles downstream of Keswick Dam	<a href="#">Click Here</a>
BSF	Sacramento River	25 miles downstream of Keswick Dam	<a href="#">Click Here</a>
JLF	Sacramento River	34 miles downstream of Keswick Dam	<a href="#">Click Here</a>
BND	Sacramento River	41 miles downstream of Keswick Dam	<a href="#">Click Here</a>
RDB	Sacramento River	58 miles downstream of Keswick Dam	<a href="#">Click Here</a>
IGO	Clear Creek	7.3 miles downstream of Whiskeytown Dam	<a href="#">Click Here</a>
LWS	Trinity River	1.1 miles downstream of Lewiston Dam	<a href="#">Click Here</a>
DGC <sup>2</sup>	Trinity River	19 miles downstream of Lewiston Dam	<a href="#">Click Here</a>
NFH <sup>3</sup>	Trinity River	38 miles downstream of Lewiston Dam	<a href="#">Click Here</a>

Temperature Control Point		
Point	Temp. (°F)	Date Range
<b>BSF</b>	<b>56.0</b>	<b>06/17/16 - Current</b>

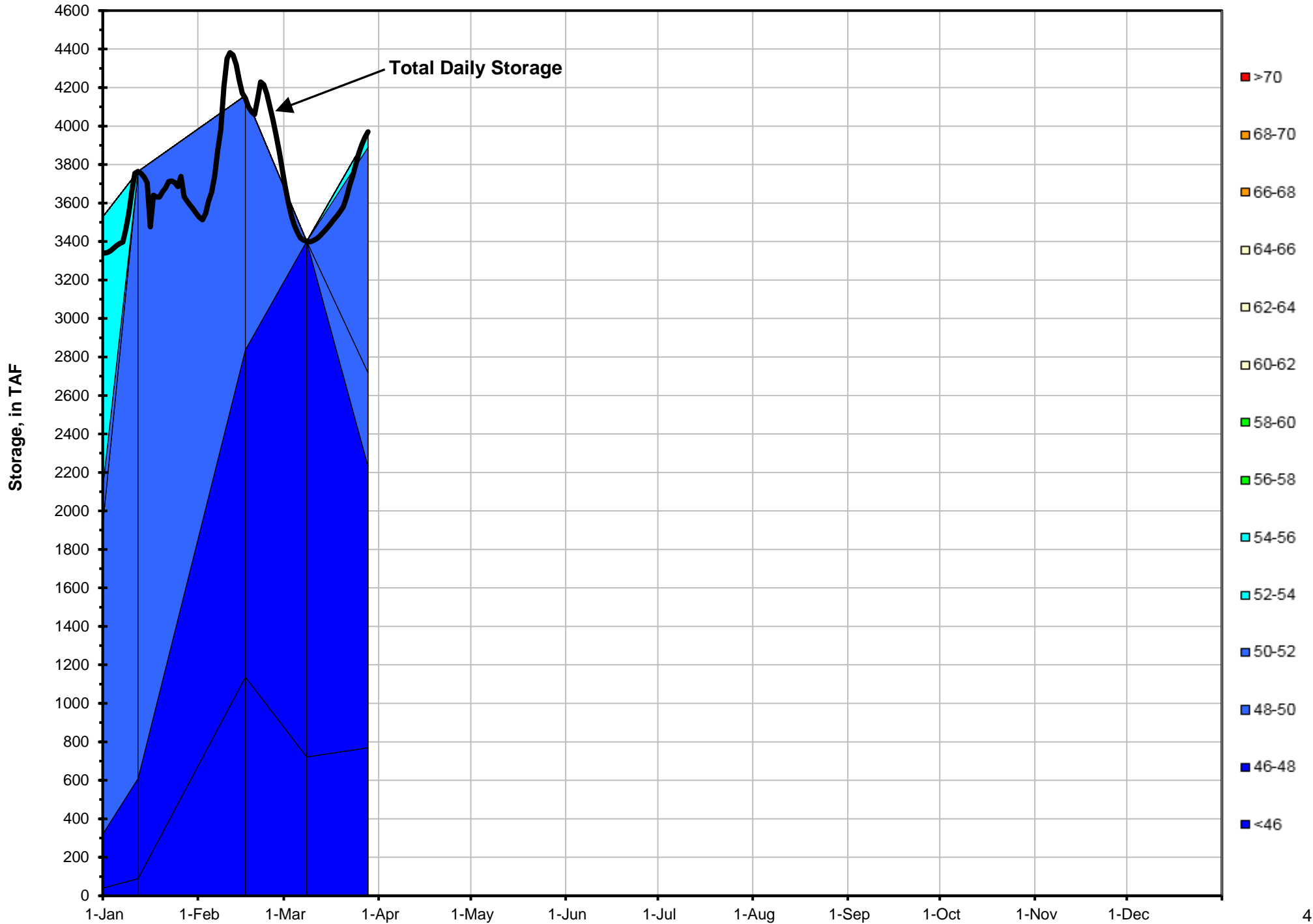
## Notes

<sup>1</sup> Distances are approximate

<sup>2</sup> DGC is only reported in September

<sup>3</sup> NFH is only reported in October, November and December

# Lake Shasta Isothermalbaths - 2017 (Water Temperature, in °F)



DATE	Daily Max		7DADM <sup>1</sup>		DAT <sup>2</sup>
	SAC	CCR	SAC	CCR	BSF
03/01	47.7	48.0	47.5	47.8	47.6
03/02	47.8	48.1	47.6	47.8	47.8
03/03	47.7	47.9	47.6	47.9	47.8
03/04	47.8	48.1	47.7	47.9	48.0
03/05	47.5	47.8	47.7	47.9	47.5
03/06	47.0	47.3	47.6	47.9	47.1
03/07	47.0	47.3	47.5	47.8	47.3
03/08	47.6	48.1	47.5	47.8	48.0
03/09	47.4	47.9	47.4	47.8	48.3
03/10	47.9	48.5	47.5	47.9	48.8
03/11	48.0	48.8	47.5	48.0	49.1
03/12	48.4	49.4	47.6	48.2	49.4
03/13	48.6	49.7	47.8	48.5	49.5
03/14	48.7	49.8	48.1	48.9	49.7
03/15	47.9	48.1	48.1	48.9	49.3
03/16	48.2	48.9	48.2	49.0	49.4
03/17	48.5	49.2	48.3	49.1	49.6
03/18	47.8	48.4	48.3	49.1	49.6
03/19	47.9	48.5	48.2	48.9	49.5
03/20	48.1	48.6	48.2	48.8	49.5
03/21	50.3	50.5	48.4	48.9	50.8
03/22	49.2	48.5	48.6	48.9	50.6
03/23	48.9	49.4	48.7	49.0	49.8
03/24	49.6	48.6	48.8	48.9	49.7
03/25	49.7	49.7	49.1	49.1	51.0
03/26	49.6	49.2	49.3	49.2	50.5
03/27	50.4	50.6	49.7	49.5	51.0
03/28	50.9	51.3	49.8	49.6	51.3
03/29	50.3	50.6	49.9	49.9	51.4
03/30	51.5	51.9	50.3	50.3	51.8
03/31	52.3	53.0	50.7	50.9	51.6

**Notes**

<sup>1</sup> 7DADM = 7-Day Average Daily Maximum

<sup>2</sup> DAT = Daily Average Temperature

