

Northern CVP Water Temperature Report

February - 2021

Page	Description
2	- Mean Daily Water Temperature, Release Flow Rates and Air Temperatures with Monthly Averages
3	- Redding 10-Day Forecasted Air Temperatures
4	- Sacramento River Mean Daily Water Temperature, Air Temperature and 10-Day Forecasted Air Temperature Plot - Water Temperature Measuring Station Details - Temperature Control Point Details
5	- Shasta Lake Isothermobaths & Cold Water Pool Statistics
14	- Trinity Lake Isothermobaths & Cold Water Pool Statistics
23	- Whiskeytown Lake Isothermobaths & Cold Water Pool Statistics
x	- TCD Configuration (External Link)



— BUREAU OF —
RECLAMATION

All Data in this Report is Preliminary and Subject to Change

DATE	Mean Daily Water Temperatures (°F)														Mean Daily Release (CFS)			Mean Daily Air Temperatures (°F)				
	TCD ¹	SHD	SPP ¹	KWK	SAC	CCR ²	BSF	JLF	BND	RDB	IGO ³	LWS	DGC	NFH	Shasta Generation	Spring Creek P.P.	Keswick Total	RDD	BSF	RDB		
Jan	51.6	50.9	48.0	50.6	50.5	50.4	49.4	49.3	49.5	49.2	46.6	45.4	43.9	43.4	2775	223	3275	47.9	46.5	48.7		
02/01	50.3	49.5	46.1	49.0	49.1	49.2	48.9	49.2	49.4	49.2	45.8	44.1	43.2	43.0	2333	564	3290	50.5	49.1	50.2		
02/02	50.2	49.4	46.4	49.2	49.4	49.8	49.1	49.8	?	50.3	50.4	46.3	44.3	43.7	3040	290	3284	47.0	50.7	53.4		
02/03	50.0	49.3	46.3	49.1	49.1	49.0	47.6	48.0	48.3	48.6	45.1	44.2	43.4	43.6	2756	282	3263	45.0	44.2	44.9		
02/04	49.8	49.3	46.4	49.1	49.2	49.1	47.6	47.5	47.7	47.6	45.0	44.2	43.0	43.3	1754	578	3285	53.0	48.9	49.8		
02/05	#	-	!	46.7	49.0	49.2	49.5	48.6	48.5	48.5	48.2	45.7	44.3	42.8	2885	167	3292	56.5	51.3	53.1		
02/06	#	-	#	47.3	49.0	49.2	49.5	49.2	49.4	49.5	49.4	46.0	44.4	43.3	2938	77	3291	↑	58.5	53.8	54.3	
02/07	#	-	#	47.2	49.1	49.3	49.5	49.1	49.4	49.6	49.8	45.9	44.4	43.5	3089	124	3292		53.5	48.1	50.6	
02/08	#	-	!	47.5	49.2	49.3	49.4	49.0	49.2	49.4	49.5	45.7	44.6	43.0	2917	77	3295		49.5	46.6	48.9	
02/09	50.0	49.1	47.3	49.3	49.5	49.8	49.7	50.0	50.2	50.1	46.3	44.8	44.0	43.5	2723	77	3295	52.0	50.3	53.5		
02/10	49.6	49.1	47.3	49.4	49.7	50.0	50.0	50.4	50.7	50.9	46.3	44.9	44.4	44.3	2927	77	3282	52.0	49.7	53.5		
02/11	49.6	49.0	47.2	49.5	49.5	49.5	49.8	50.3	50.6	50.7	46.1	45.0	44.2	43.9	3251	77	3261	48.0	47.8	48.8		
02/12	49.7	49.0	46.7	49.4	49.7	50.1	49.6	49.9	50.2	50.3	?	46.3	45.2	44.0	3117	134	3290	51.0	50.3	51.7		
02/13	49.7	48.9	46.9	49.5	49.8	50.3	50.6	50.8	51.2	51.2	46.8	45.4	45.5	45.6	3078	77	3262	52.0	52.3	54.6		
02/14	49.8	49.0	?	47.2	49.4	49.5	49.5	49.4	49.8	50.3	50.7	?	46.1	45.4	43.2	43.7	3149	77	3265	47.5	45.3	48.1
02/15	49.4	48.9	?	46.6	49.4	49.6	49.6	49.2	49.4	49.7	49.8	46.9	45.7	44.0	43.9	2157	542	3231	48.0	47.7	48.9	
02/16	49.5	49.0	46.7	49.1	49.4	49.6	49.2	49.3	49.5	49.5	46.1	45.7	44.4	44.7	2802	330	3213	47.5	45.0	48.7		
02/17	49.8	49.0	46.7	49.1	49.3	49.4	49.1	49.2	49.4	49.6	46.0	45.8	44.3	44.1	2603	234	3224	47.0	46.5	49.3		
02/18	49.5	48.9	?	46.5	48.9	48.9	48.7	48.4	48.5	48.8	48.9	45.7	45.7	43.2	43.4	2573	510	3249	42.5	41.6	44.4	
02/19	49.3	48.8	?	46.6	48.6	48.9	48.9	48.4	48.4	48.5	48.4	46.3	45.8	43.3	43.2	2629	586	3293	48.0	45.2	47.0	
02/20	49.2	48.8	#	-	48.6	49.0	49.3	49.1	49.4	49.5	49.3	46.5	45.9	44.6	?	44.4	2592	374	3301	50.0	48.4	50.8
02/21	49.7	48.9	#	-	48.9	49.2	49.4	49.5	49.8	50.2	50.3	46.7	45.9	44.9	44.9	2726	612	3304	53.0	52.2	54.4	
02/22	49.7	48.9	!	-	49.0	49.4	49.9	50.4	50.7	50.9	51.0	47.4	46.0	45.9	45.9	3209	161	3295	62.0	58.0	58.9	
02/23	49.5	49.0	47.9	49.2	49.6	50.1	50.9	51.6	52.0	52.0	47.5	46.1	46.4	46.5	3007	77	3304	60.0	58.6	61.0		
02/24	49.6	49.1	47.9	49.3	49.5	49.6	49.9	50.4	50.8	51.4	46.6	45.9	45.2	45.6	2706	77	3301	51.5	51.1	52.9		
02/25	49.5	49.1	48.0	49.3	49.5	?	49.8	49.5	49.6	49.8	50.1	46.9	46.1	44.4	44.6	3315	77	3308	56.5	48.9	53.1	
02/26	49.7	49.1	47.9	49.4	49.6	49.8	50.0	50.3	50.4	50.4	46.9	46.3	45.0	44.8	2648	79	3286	49.0	47.2	52.3		
02/27	49.9	49.1	47.4	49.3	49.5	49.8	49.7	50.0	50.3	50.5	46.8	46.4	44.7	44.8	2726	263	3304	47.0	48.2	51.8		
02/28	49.6	49.2	47.9	49.5	49.7	50.1	50.2	50.5	50.7	50.8	47.1	46.6	45.2	45.0	2790	77	3304	58.0	55.0	55.4		
-																						
-																						
-																						
Feb	49.7	49.1	47.1	49.2	49.4	49.6	49.3	49.6	49.9	49.9	46.3	45.3	44.2	44.2	2801	238	3281	51.3	49.3	51.6		
															Total CFS	78440	6677	91864				
															Total AF	155583	13244	182208				

Legend

- ? = 1-9 hours of data missing (Average includes estimations)
- ! = 10 or more hours of data missing (Average not calculated)
- # = Station out of service
- ↑ = Record high air temperature
- ↓ = Record low air temperature
- = Monthly Averages

Notes

- ¹ Temperatures are weighted averages based on individual penstock flow and temperature
- Highlighted cells in the TCD column indicate a TCD change was made on that day
- ² Current Sacramento River control point (see page 4 for more details)

DATE	Redding (RDD) Daily Air Temperatures (°F)																																				
	Actual			Forecasted																																	
	Previous Day			Current Day			1 Day			2 Days			3 Days			4 Days			5 Days			6 Days			7 Days			8 Days			9 Days			10 Days			
	↓	↑	Avg	↓	↑	Avg	↓	↑	Avg	↓	↑	Avg	↓	↑	Avg	↓	↑	Avg	↓	↑	Avg	↓	↑	Avg	↓	↑	Avg	↓	↑	Avg	↓	↑	Avg	↓	↑	Avg	
02/01	44	54	49.0	44	55	49.5	44	54	49.0	33	52	42.5	33	60	46.5	35	65	50.0	39	66	52.5	40	66	53.0	41	63	52.0	39	61	50.0	40	60	50.0	37	63	50.0	
02/02	43	58	50.5	38	53	45.5	33	46	39.5	31	57	44.0	33	63	48.0	37	66	51.5	37	65	51.0	38	63	50.5	43	58	50.5	43	64	53.5	44	65	54.5	43	66	54.5	
02/03	37	57	47.0	40	51	45.5	35	60	47.5	35	65	50.0	39	65	52.0	37	64	50.5	39	59	49.0	40	58	49.0	41	59	50.0	40	57	48.5	39	59	49.0	40	59	49.5	
02/04	36	54	45.0	43	60	51.5	37	65	51.0	41	66	53.5	36	64	50.0	36	59	47.5	36	59	47.5	36	62	49.0	39	63	51.0	44	65	54.5	43	67	55.0	43	68	55.5	
02/05	43	63	53.0	43	65	54.0	38	66	52.0	36	66	51.0	38	63	50.5	40	61	50.5	38	62	50.0	38	61	49.5	35	61	48.0	40	63	51.5	38	63	50.5	40	65	52.5	
02/06	41	72	56.5	46	72	59.0	35	70	52.5	35	61	48.0	40	60	50.0	39	61	50.0	39	58	48.5	42	54	48.0	38	56	47.0	39	58	48.5	41	59	50.0	39	64	51.5	
02/07	41	76	58.5	34	72	53.0	36	62	49.0	40	61	50.5	40	64	52.0	40	56	48.0	39	53	46.0	38	53	45.5	42	60	51.0	41	59	50.0	39	60	49.5	40	62	51.0	
02/08	33	74	53.5	36	62	49.0	40	64	52.0	41	65	53.0	45	56	50.5	43	57	50.0	42	53	47.5	36	53	44.5	44	56	50.0	44	61	52.5	42	58	50.0	43	63	53.0	
02/09	36	63	49.5	41	64	52.5	39	67	53.0	45	58	51.5	45	61	53.0	44	53	48.5	38	59	48.5	40	54	47.0	38	63	50.5	41	59	50.0	40	61	50.5	41	62	51.5	
02/10	40	64	52.0	38	69	53.5	41	55	48.0	39	58	48.5	43	54	48.5	35	59	47.0	41	56	48.5	39	61	50.0	40	62	51.0	41	60	50.5	43	60	51.5	40	62	51.0	
02/11	37	67	52.0	45	54	49.5	38	60	49.0	42	59	50.5	35	57	46.0	41	57	49.0	39	61	50.0	37	61	49.0	42	57	49.5	43	58	50.5	44	60	52.0	40	64	52.0	
02/12	45	51	48.0	43	59	51.0	44	60	52.0	35	57	46.0	41	58	49.5	36	61	48.5	35	62	48.5	41	56	48.5	44	58	51.0	39	60	49.5	40	64	52.0	42	67	54.5	
02/13	43	59	51.0	43	60	51.5	35	55	45.0	41	58	49.5	34	62	48.0	35	62	48.5	39	59	49.0	40	58	49.0	39	59	49.0	42	64	53.0	44	67	55.5	47	68	57.5	
02/14	43	61	52.0	45	56	50.5	42	58	50.0	34	60	47.0	33	61	47.0	40	54	47.0	42	59	50.5	38	61	49.5	44	65	54.5	45	70	57.5	47	71	59.0	45	67	56.0	
02/15	41	54	47.5	43	58	50.5	37	60	48.5	36	62	49.0	38	55	46.5	44	58	51.0	36	58	47.0	37	62	49.5	43	66	54.5	46	68	57.0	44	67	55.5	41	64	52.5	
02/16	44	52	48.0	48	60	54.0	37	61	49.0	37	54	45.5	43	58	50.5	37	58	47.5	35	64	49.5	39	71	55.0	43	67	55.0	41	66	53.5	39	64	51.5	40	65	52.5	
02/17	34	61	47.5	37	62	49.5	37	53	45.0	43	55	49.0	39	60	49.5	38	66	52.0	41	72	56.5	43	71	57.0	42	66	54.0	39	60	49.5	41	64	52.5	41	69	55.0	
02/18	34	60	47.0	37	54	45.5	40	56	48.0	36	58	47.0	35	66	50.5	39	72	55.5	43	70	56.5	38	64	51.0	46	61	53.5	42	54	48.0	39	60	49.5	39	67	53.0	
02/19	37	48	42.5	43	55	49.0	37	58	47.5	36	66	51.0	39	73	56.0	42	65	53.5	36	63	49.5	38	63	50.5	39	56	47.5	37	61	49.0	40	60	50.0	40	64	52.0	
02/20	43	53	48.0	41	58	49.5	36	66	51.0	40	72	56.0	42	65	53.5	36	63	49.5	36	64	50.0	37	64	50.5	46	68	57.0	42	67	54.5	41	62	51.5	42	63	52.5	
02/21	39	61	50.0	43	67	55.0	41	72	56.5	43	68	55.5	37	64	50.5	36	64	50.0	35	64	49.5	35	62	48.5	43	66	54.5	39	68	53.5	42	70	56.0	44	68	56.0	
02/22	39	67	53.0	NR	76	-	45	71	58.0	37	61	49.0	34	68	51.0	36	64	50.0	35	61	48.0	35	65	50.0	39	63	51.0	36	68	52.0	42	67	54.5	43	69	56.0	
02/23	47	77	62.0	NR	73	-	40	62	51.0	35	70	52.5	35	65	50.0	35	60	47.5	36	65	50.5	36	57	46.5	42	64	53.0	41	70	55.5	44	69	56.5	43	73	58.0	
02/24	47	73	60.0	NR	60	-	36	68	52.0	36	64	50.0	36	62	49.0	37	67	52.0	37	63	50.0	38	66	52.0	41	61	51.0	46	59	52.5	45	60	52.5	42	65	53.5	
02/25	42	61	51.5	47	69	58.0	37	65	51.0	42	63	52.5	37	69	53.0	37	63	50.0	36	65	50.5	37	66	51.5	44	67	55.5	45	65	55.0	46	65	55.5	41	66	53.5	
02/26	43	70	56.5	34	62	48.0	34	61	47.5	37	69	53.0	37	63	50.0	36	65	50.5	36	66	51.0	39	64	51.5	45	64	54.5	41	61	51.0	41	63	52.0	42	65	53.5	
02/27	32	66	49.0	33	62	47.5	38	69	53.5	37	63	50.0	38	68	53.0	38	70	54.0	41	66	53.5	42	67	54.5	45	63	54.0	44	62	53.0	40	62	51.0	39	65	52.0	
02/28	30	64	47.0	45	70	57.5	36	65	50.5	38	68	53.0	38	70	54.0	39	69	54.0	41	67	54.0	43	62	52.5	42	68	55.0	43	60	51.5	40	64	52.0	39	67	53.0	
-																																					
-																																					
-																																					

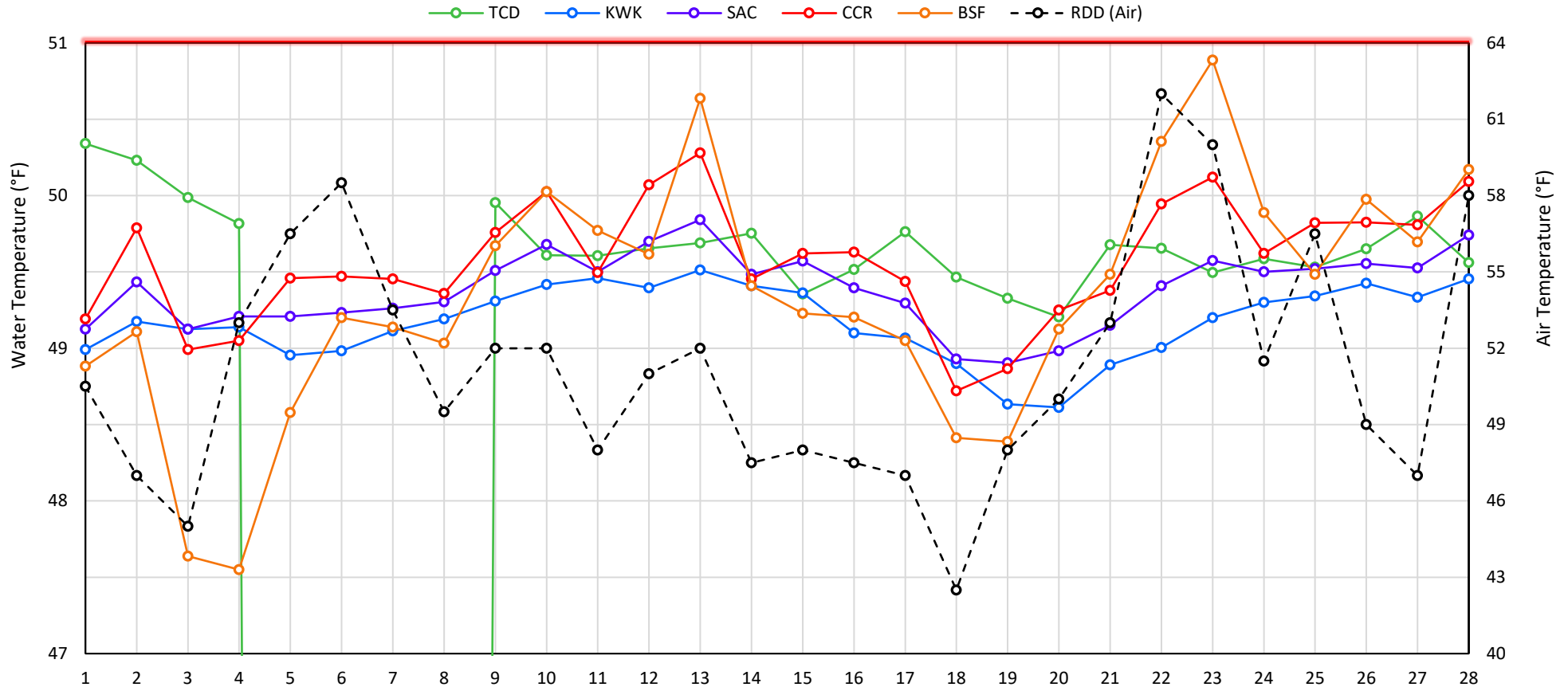
Web Links

- [10-Day Min/Max Forecast](#)
- [Previous Days Min/Max Actuals](#)

Legend

- NR = Forecasted temperatures not recorded
- 100** = Previous day actual temperatures in red and bolded indicate a record temperature for that date

Mean Daily Temperatures



Station Details

Code	Body of Water	Location ¹	CDEC Link
TCD	N/A	Shasta Power Plant	N/A
SHD	Sacramento River	0.3 miles downstream of Shasta Power Plant	Click Here
SPP	N/A	Spring Creek Power Plant	N/A
KWK	Sacramento River	0.8 miles downstream of Keswick Dam	Click Here
SAC	Sacramento River	4.8 miles downstream of Keswick Dam	Click Here
CCR	Sacramento River	9.7 miles downstream of Keswick Dam	Click Here
BSF	Sacramento River	25 miles downstream of Keswick Dam	Click Here
JLF	Sacramento River	34 miles downstream of Keswick Dam	Click Here
BND	Sacramento River	41 miles downstream of Keswick Dam	Click Here
RDB	Sacramento River	58 miles downstream of Keswick Dam	Click Here
IGO	Clear Creek	7.3 miles downstream of Whiskeytown Dam	Click Here
LWS	Trinity River	1.1 miles downstream of Lewiston Dam	Click Here
DGC	Trinity River	19 miles downstream of Lewiston Dam	Click Here
NFH	Trinity River	38 miles downstream of Lewiston Dam	Click Here

Water Right Temperature Control Points

River	Point	Temp. (°F)	Begin Date	End Date
Sacramento	BSF	56	05/15/2019	09/20/2020
Sacramento	CCR	56	09/21/2020	TBD
Trinity	DGC	56	09/15/2020	10/01/2020
Trinity	NFH	56	10/01/2020	12/31/2020

Notes

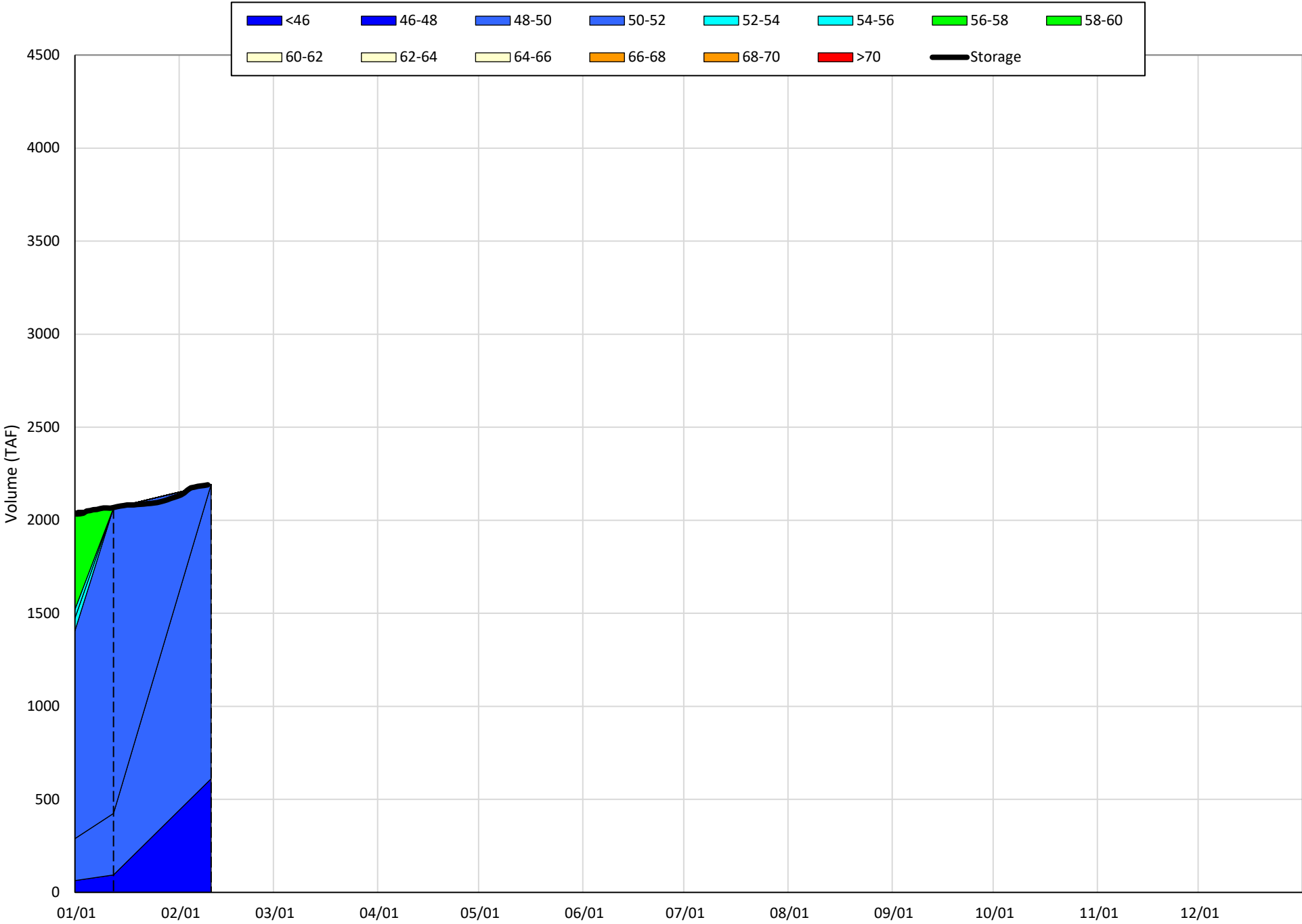
¹ Distances are approximate

Shasta Lake Isothermobaths & Cold Water Pool Statistics

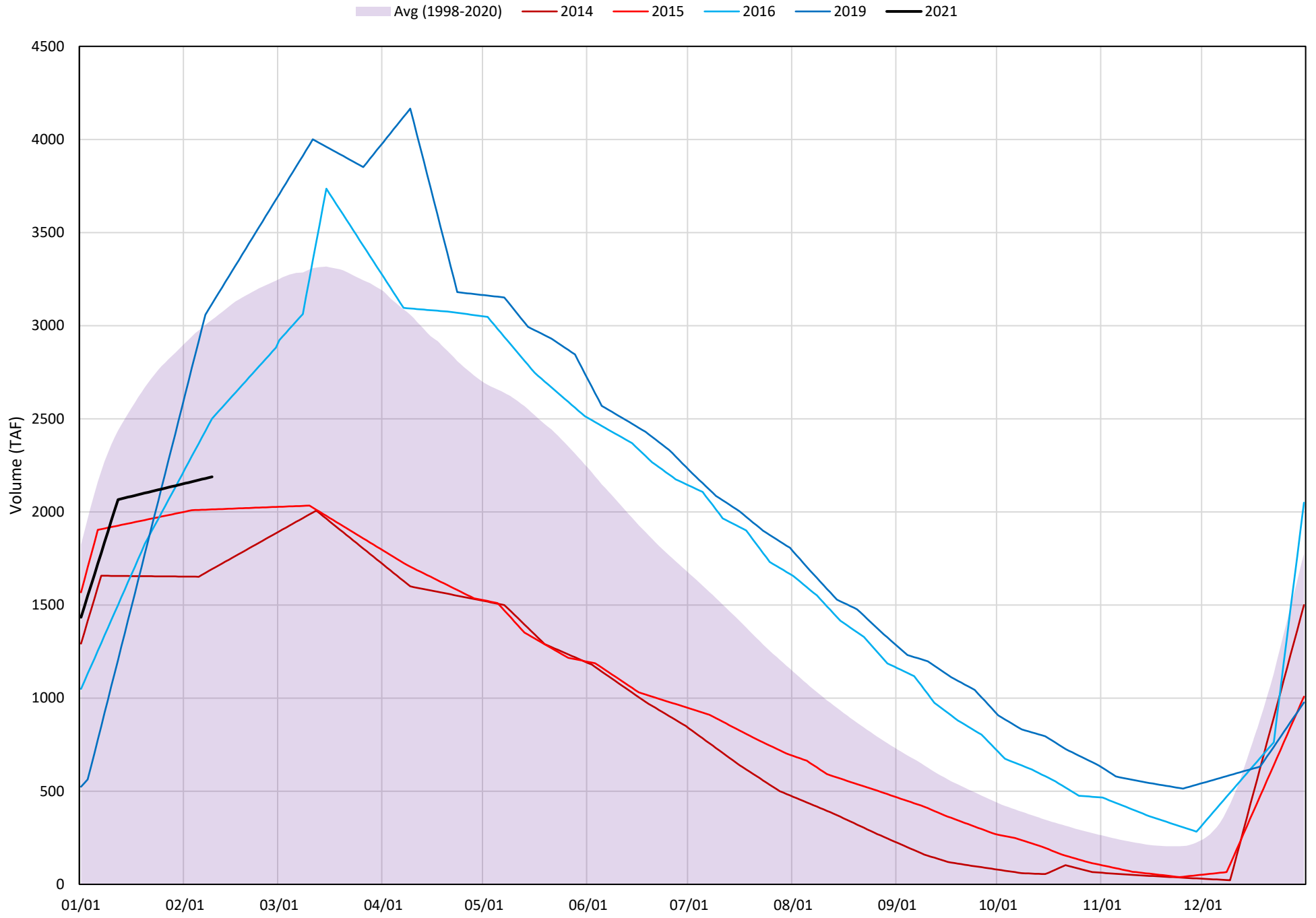
2021

Page	Description
6	- Shasta Lake Isothermobaths Plot
7	- Shasta Lake Cold Water Pool Volume $\leq 52^{\circ}\text{F}$
8	- Shasta Lake Cold Water Pool Volume $\leq 50^{\circ}\text{F}$
9	- Shasta Lake Cold Water Pool Volume $\leq 48^{\circ}\text{F}$
10	- Shasta Lake Cold Water Pool Volume $\leq 52^{\circ}\text{F}$ - Percent Exceedances
11	- Shasta Lake Cold Water Pool Volume $\leq 50^{\circ}\text{F}$ - Percent Exceedances
12	- Shasta Lake Cold Water Pool Volume $\leq 48^{\circ}\text{F}$ - Percent Exceedances
13	- Shasta Lake Cold Water Pool Comparison by Year

Shasta Lake Isothermobaths Plot - 2021

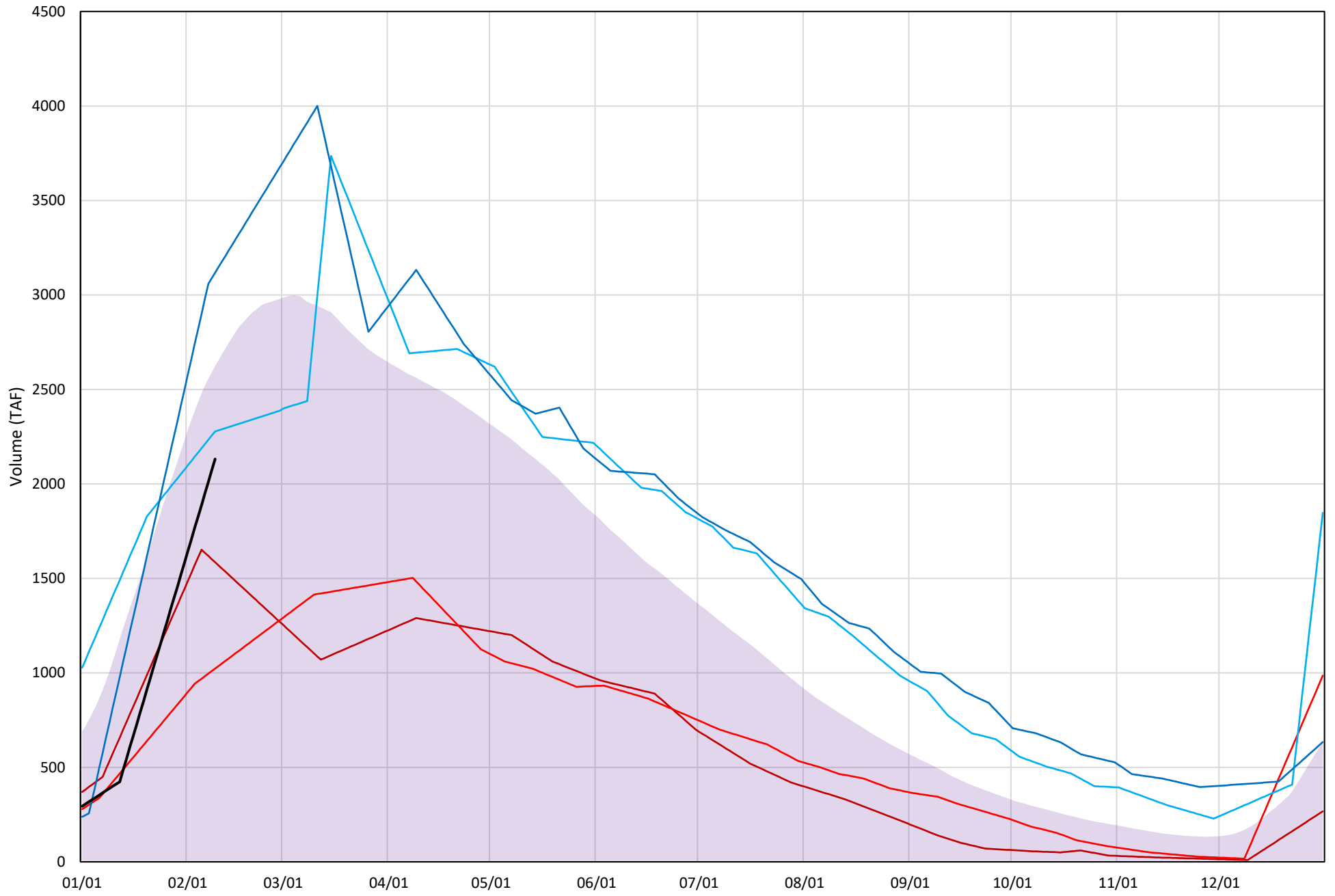


Shasta Lake Cold Water Pool Volume $\leq 52^{\circ}\text{F}$



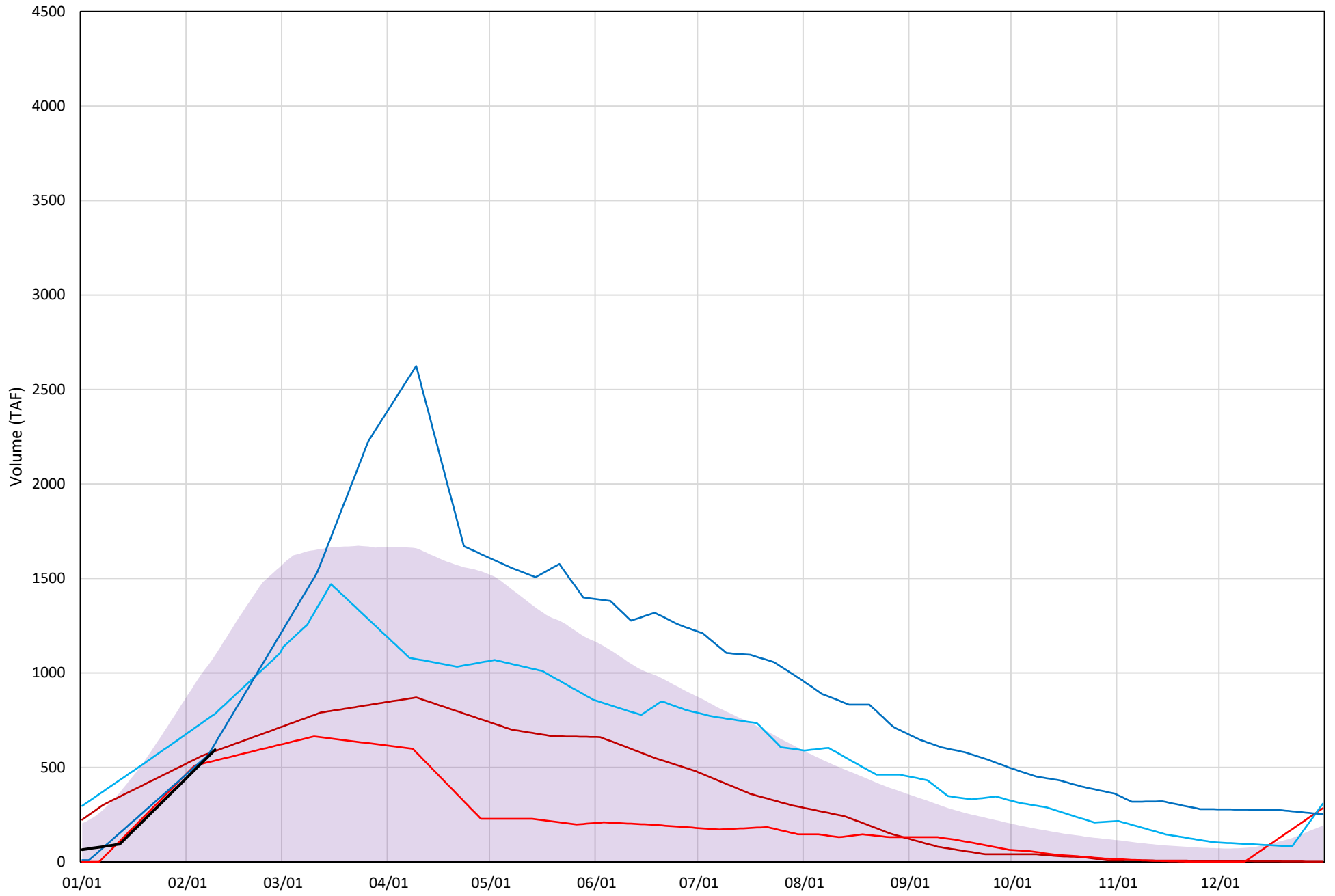
Shasta Lake Cold Water Pool Volume $\leq 50^{\circ}\text{F}$

Avg (1998-2020) 2014 2015 2016 2019 2021



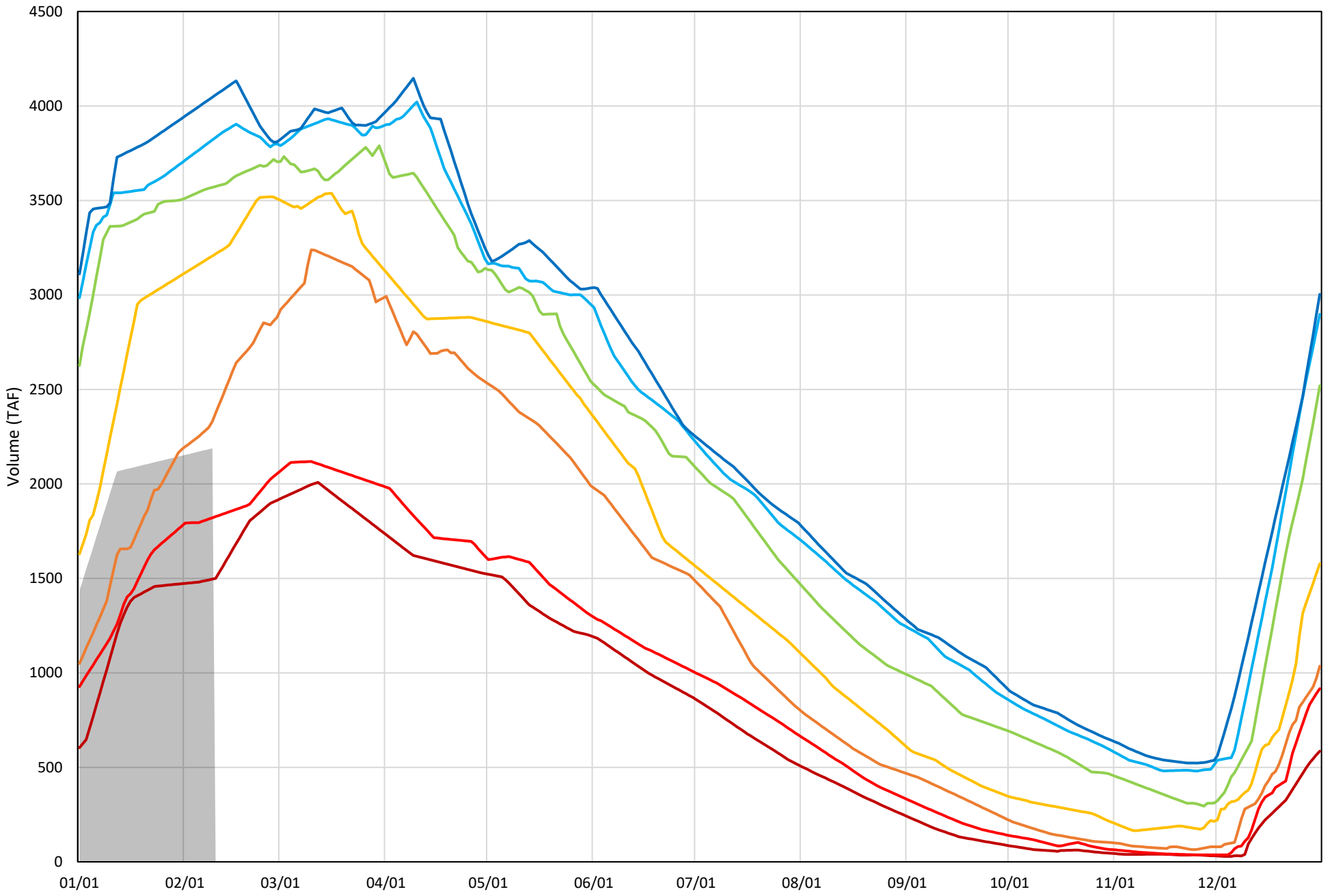
Shasta Lake Cold Water Pool Volume $\leq 48^\circ\text{F}$

Avg (1998-2020) 2014 2015 2016 2019 2021



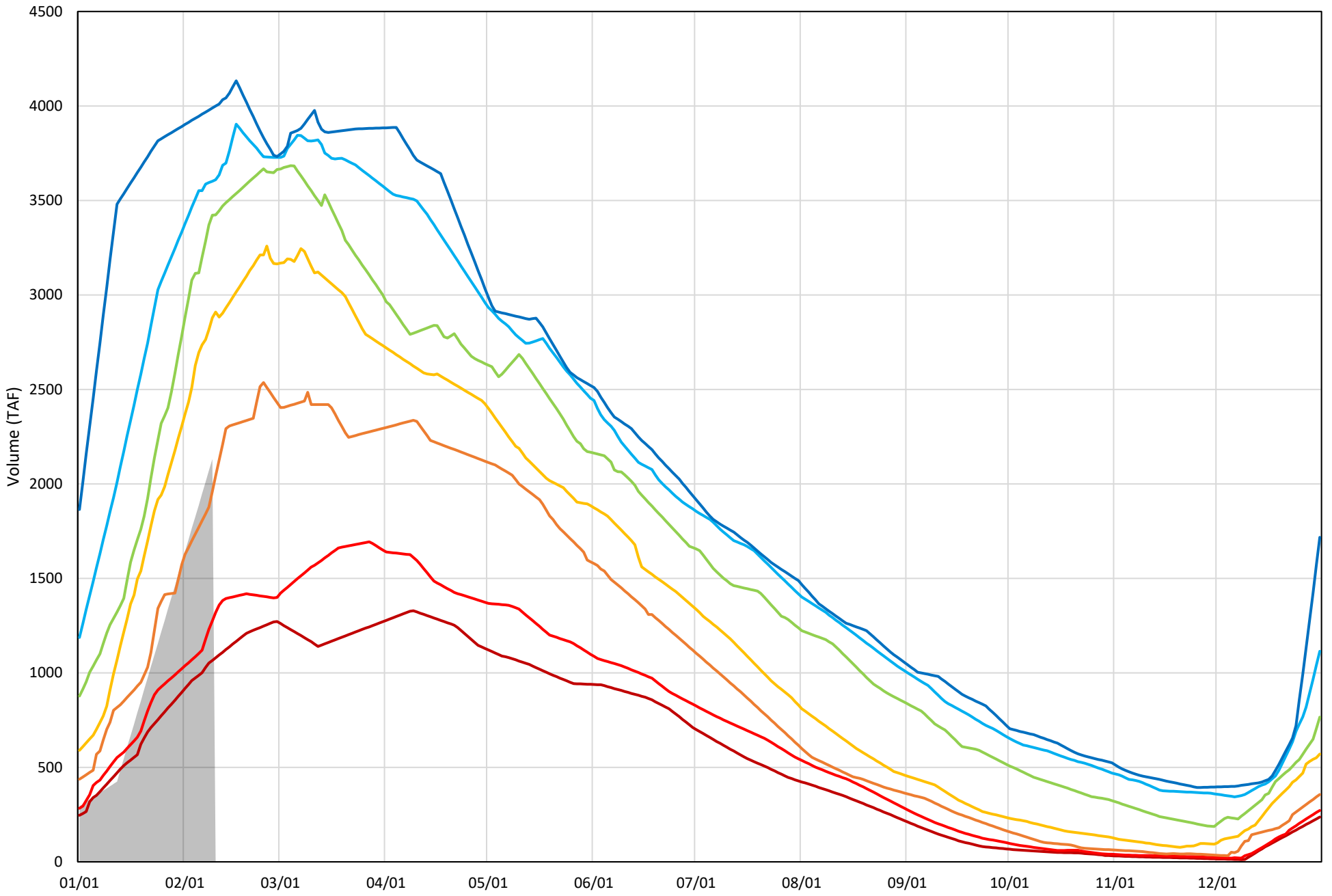
Shasta Lake Cold Water Pool Volume $\leq 52^{\circ}\text{F}$ - Percent Exceedances (1998-2020)

2021 95 90 75 50 25 10 5



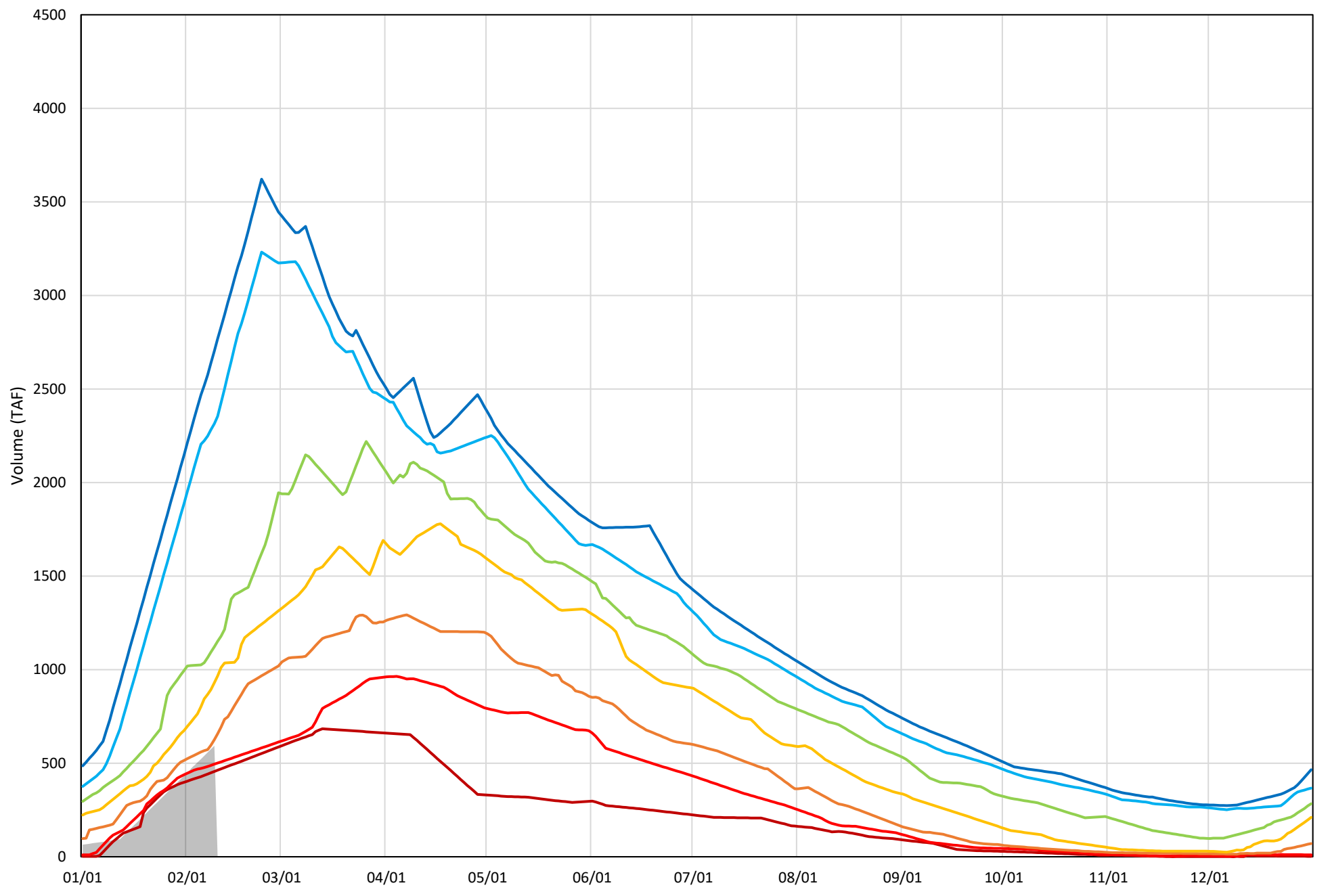
Shasta Lake Cold Water Pool Volume $\leq 50^{\circ}\text{F}$ - Percent Exceedances (1998-2020)

2021 95 90 75 50 25 10 5



Shasta Lake Cold Water Pool Volume $\leq 48^{\circ}\text{F}$ - Percent Exceedances (1998-2020)

2021 95 90 75 50 25 10 5



Shasta Lake Cold Water Pool Comparison by Year (for Specified Date)

Feb-10 2021	Δ TAF				% Δ			
	≤52°	≤50°	≤48°	Abs. Avg.	≤52°	≤50°	≤48°	Abs. Avg.
1998	129	166	-141	145	6	8	-24	12
1999	1387	784	2188	1453	63	37	369	156
2000	1721	1080	143	981	79	51	24	51
2001	1018	141	1519	893	47	7	256	103
2002	1435	1492	529	1152	66	70	89	75
2003	1322	748	455	841	60	35	77	57
2004	1497	1323	181	1001	68	62	31	54
2005	748	804	337	630	34	38	57	43
2006	1381	1437	328	1049	63	67	55	62
2007	1234	1291	450	991	56	61	76	64
2008	127	183	1608	639	6	9	271	95
2009	-742	-685	11	479	-34	-32	2	23
2010	631	688	391	570	29	32	66	42
2011	1340	-172	380	631	61	-8	64	44
2012	936	993	438	789	43	47	74	54
2013	1331	1307	747	1128	61	61	126	83
2014	-496	-546	-7	350	-23	-26	-1	16
2015	-175	-1109	-57	447	-8	-52	-10	23
2016	313	146	191	217	14	7	32	18
2017	1892	1948	1798	1879	86	91	303	160
2018	142	-800	-126	356	6	-38	-21	22
2019	929	986	33	650	42	46	6	31
2020	1317	-894	101	771	60	-42	17	40
2021	0	0	0	0	0	0	0	0

Historic - Current

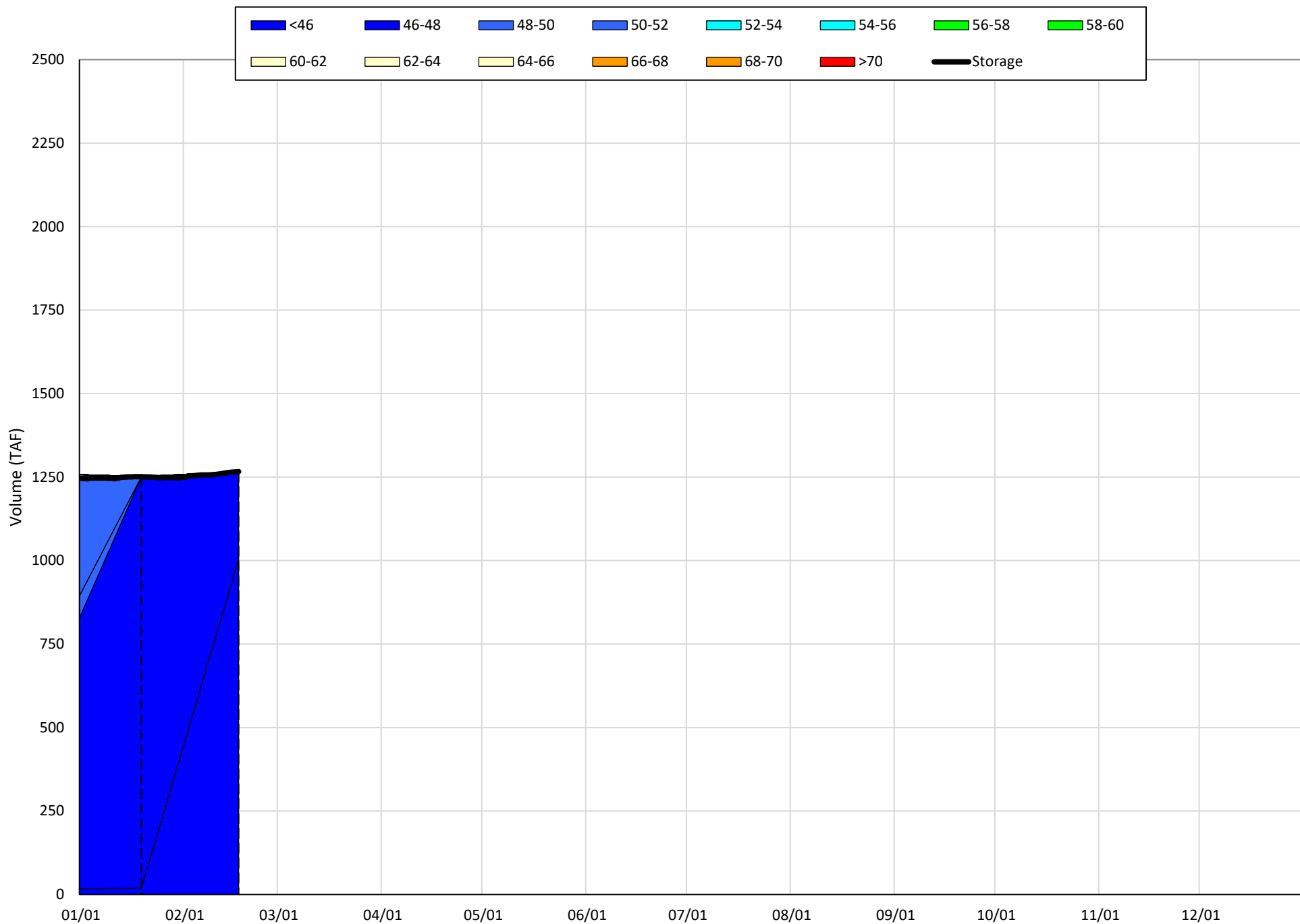
(Historic - Current) / Current

Trinity Lake Isothermobaths & Cold Water Pool Statistics

2021

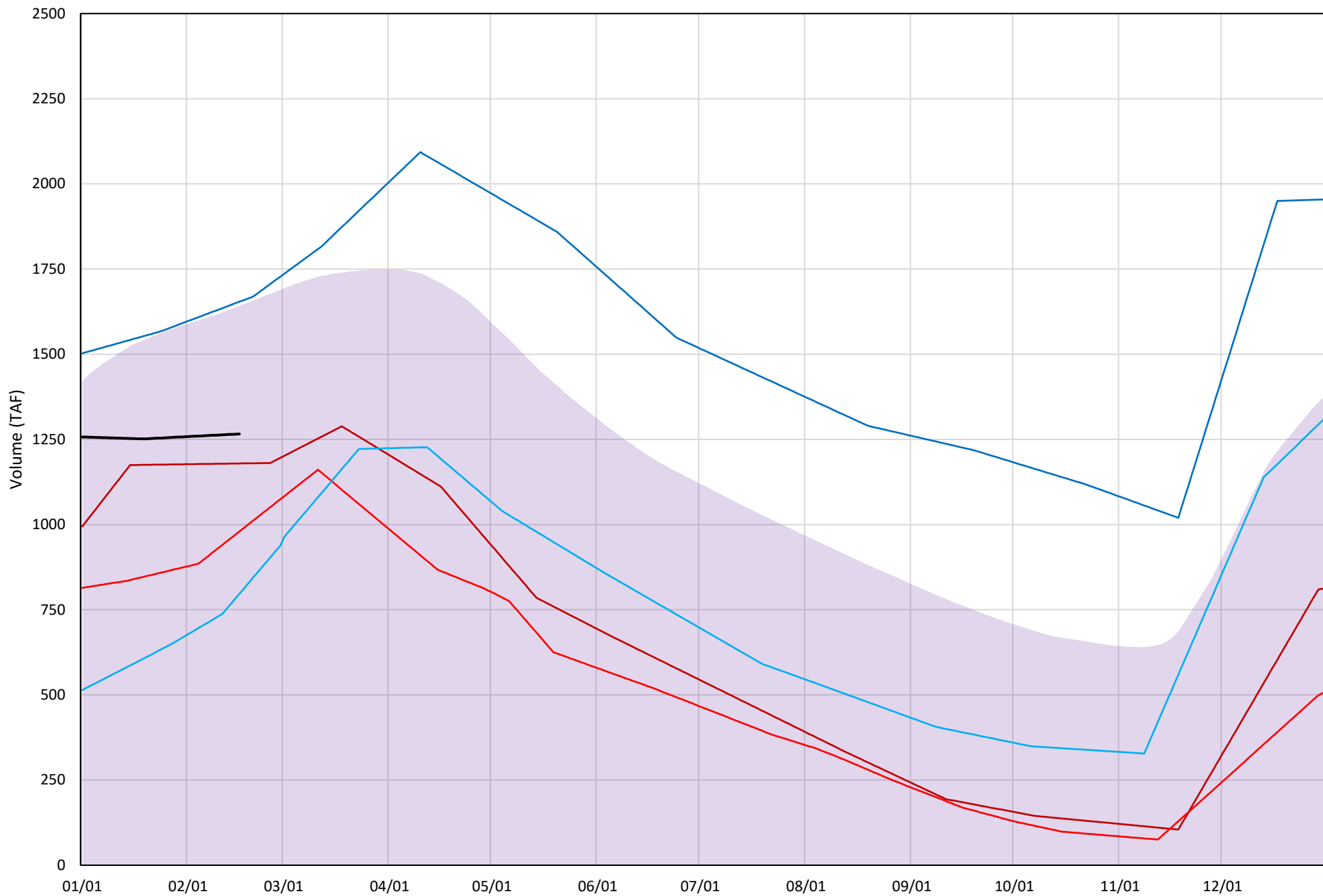
Page	Description
15	- Trinity Lake Isothermobaths Plot
16	- Trinity Lake Cold Water Pool Volume $\leq 52^{\circ}\text{F}$
17	- Trinity Lake Cold Water Pool Volume $\leq 50^{\circ}\text{F}$
18	- Trinity Lake Cold Water Pool Volume $\leq 48^{\circ}\text{F}$
19	- Trinity Lake Cold Water Pool Volume $\leq 52^{\circ}\text{F}$ - Percent Exceedances
20	- Trinity Lake Cold Water Pool Volume $\leq 50^{\circ}\text{F}$ - Percent Exceedances
21	- Trinity Lake Cold Water Pool Volume $\leq 48^{\circ}\text{F}$ - Percent Exceedances
22	- Trinity Lake Cold Water Pool Comparison by Year

Trinity Lake Isothermobaths Plot - 2021



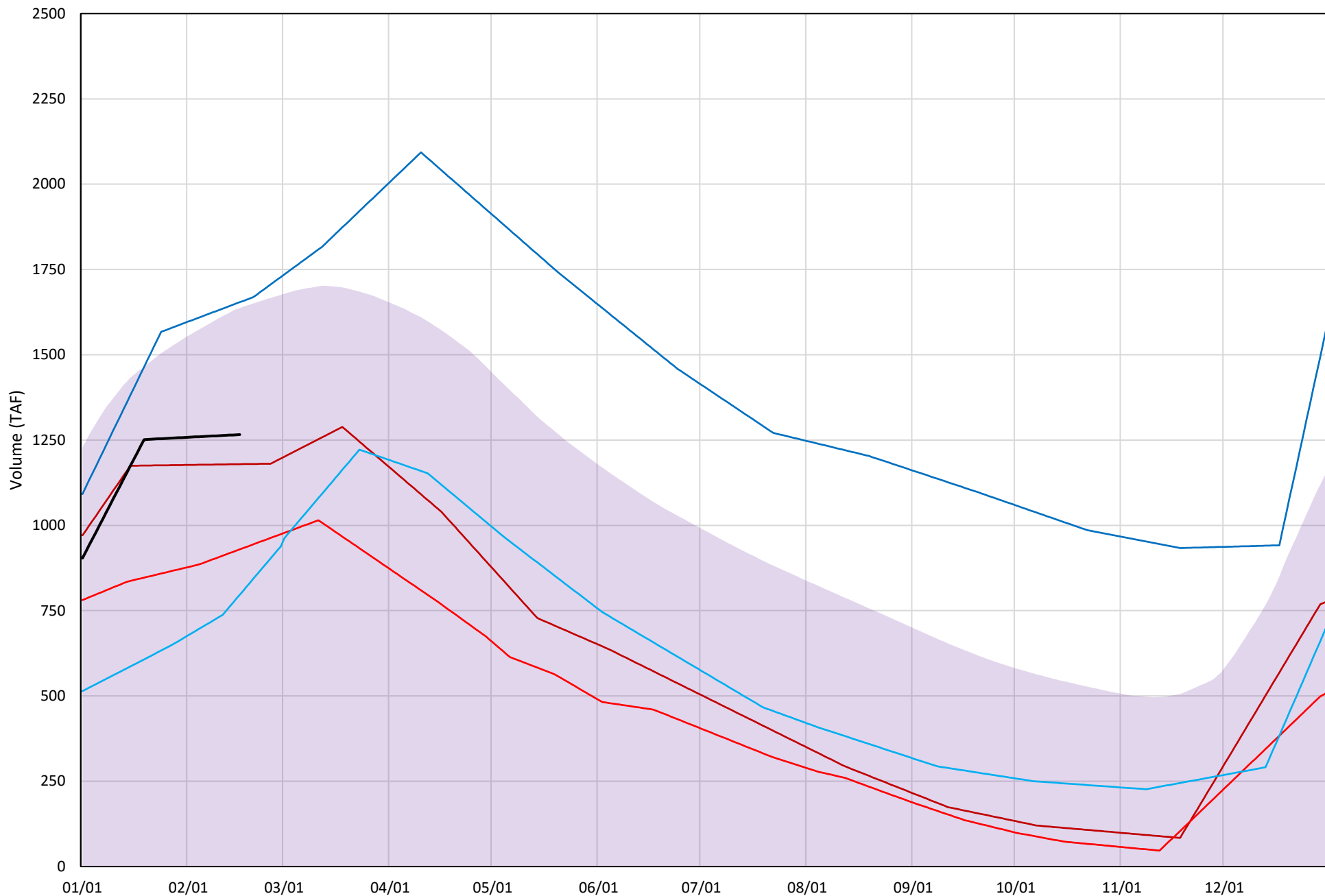
Trinity Lake Cold Water Pool Volume ≤52°F

Avg (2000-2020) 2014 2015 2016 2019 2021



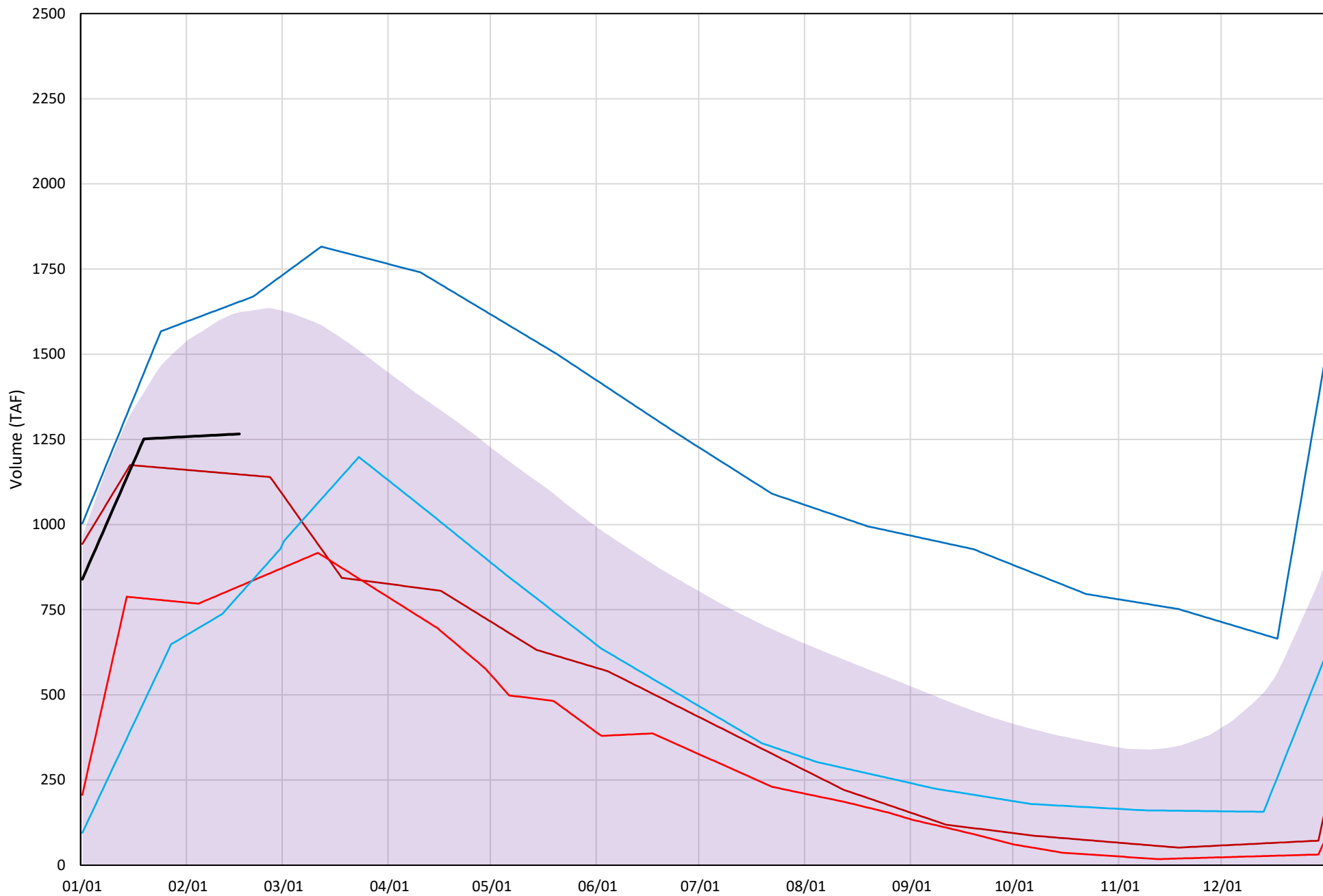
Trinity Lake Cold Water Pool Volume ≤50°F

Avg (2000-2020) 2014 2015 2016 2019 2021

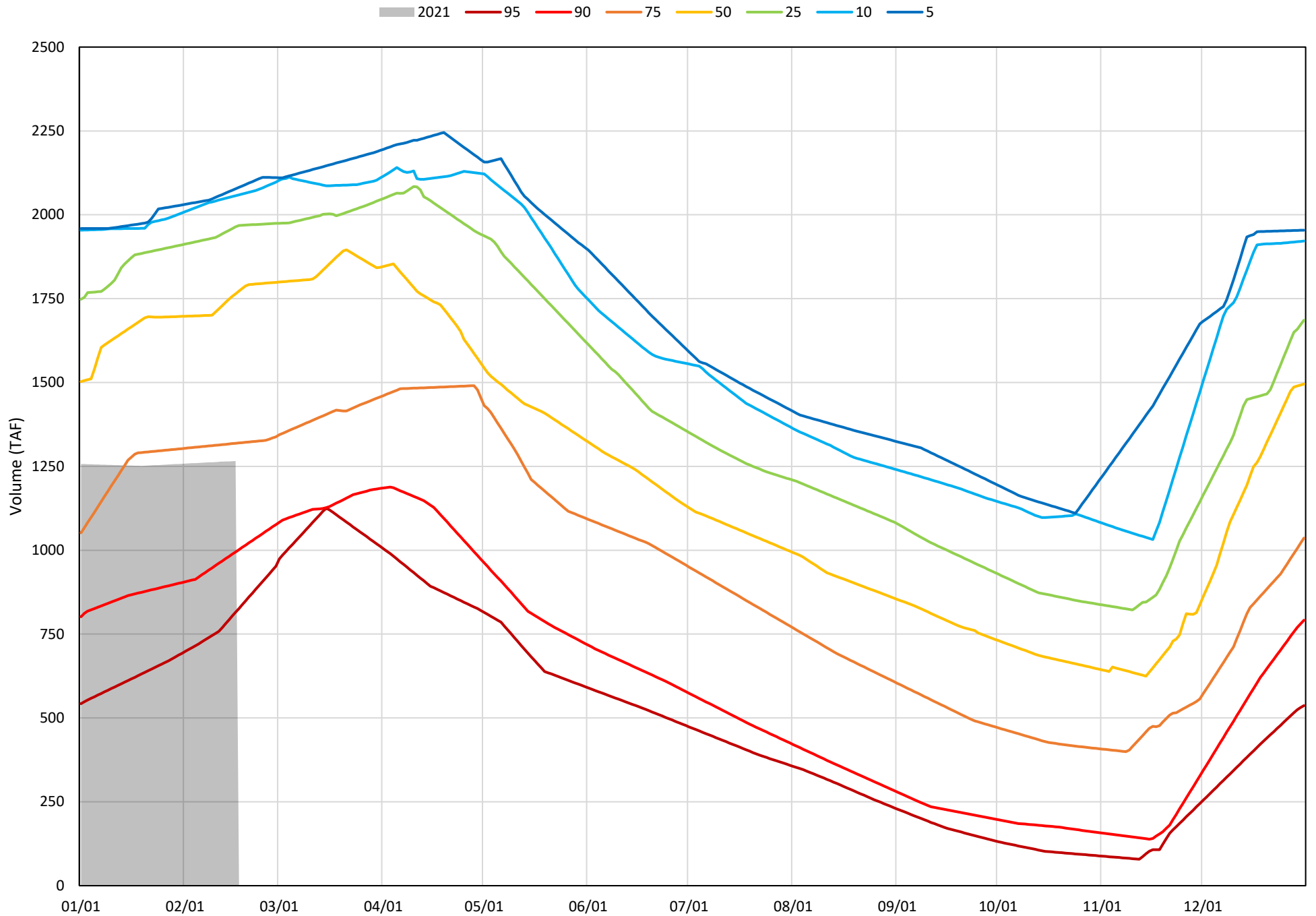


Trinity Lake Cold Water Pool Volume $\leq 48^{\circ}\text{F}$

Avg (2000-2020) 2014 2015 2016 2019 2021

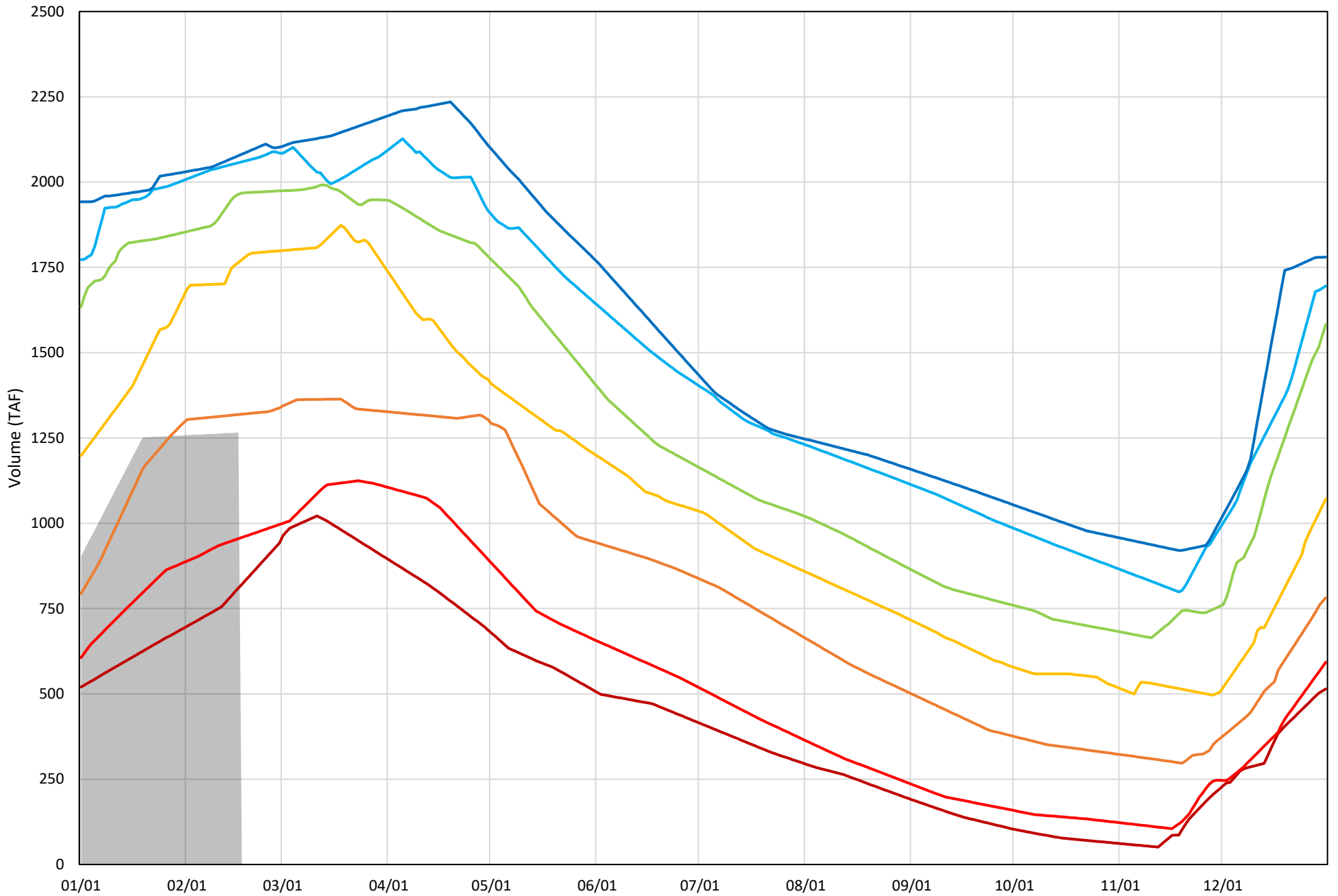


Trinity Lake Cold Water Pool Volume ≤52°F - Percent Exceedances (2000-2020)

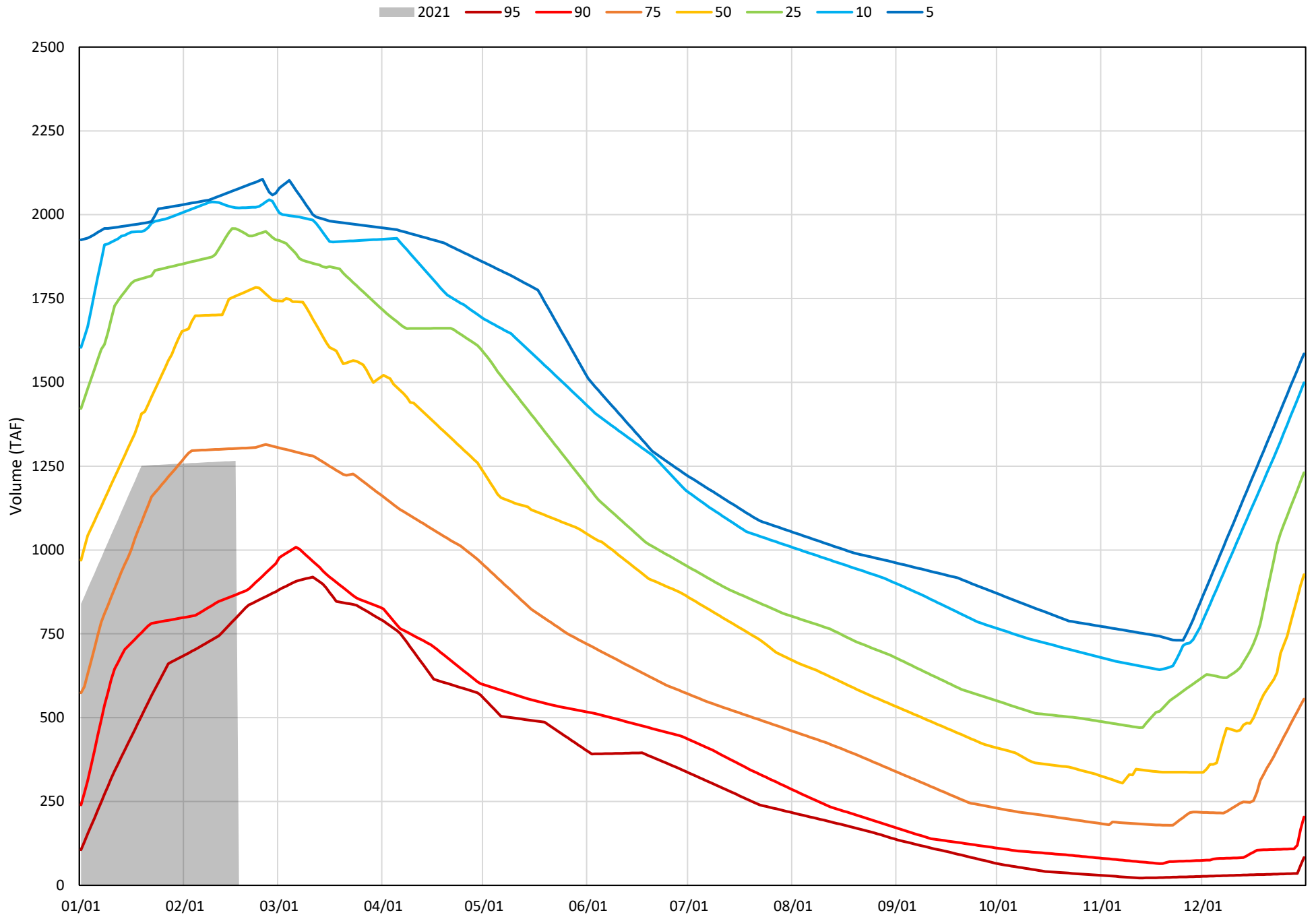


Trinity Lake Cold Water Pool Volume $\leq 50^{\circ}\text{F}$ - Percent Exceedances (2000-2020)

2021 95 90 75 50 25 10 5



Trinity Lake Cold Water Pool Volume $\leq 48^{\circ}\text{F}$ - Percent Exceedances (2000-2020)



Trinity Cold Water Pool Comparison by Year (for Specified Date)

Feb-17 2021	Δ TAF				% Δ			
	≤52°	≤50°	≤48°	Abs. Avg.	≤52°	≤50°	≤48°	Abs. Avg.
2000	813	813	813	813	64	64	64	64
2001	437	437	437	437	35	35	35	35
2002	443	443	443	443	35	35	35	35
2003	610	610	602	607	48	48	48	48
2004	698	698	698	698	55	55	55	55
2005	372	320	293	328	29	25	23	26
2006	801	801	768	790	63	63	61	62
2007	591	591	578	587	47	47	46	46
2008	192	192	192	192	15	15	15	15
2009	-210	-210	-210	210	-17	-17	-17	17
2010	-150	-157	-159	155	-12	-12	-13	12
2011	584	584	584	584	46	46	46	46
2012	705	705	705	705	56	56	56	56
2013	698	698	698	698	55	55	55	55
2014	-87	-87	-119	97	-7	-7	-9	8
2015	-286	-336	-447	357	-23	-27	-35	28
2016	-469	-469	-472	470	-37	-37	-37	37
2017	498	498	491	496	39	39	39	39
2018	523	523	523	523	41	41	41	41
2019	388	388	388	388	31	31	31	31
2020	751	751	688	730	59	59	54	58
2021	0	0	0	0	0	0	0	0

Historic - Current

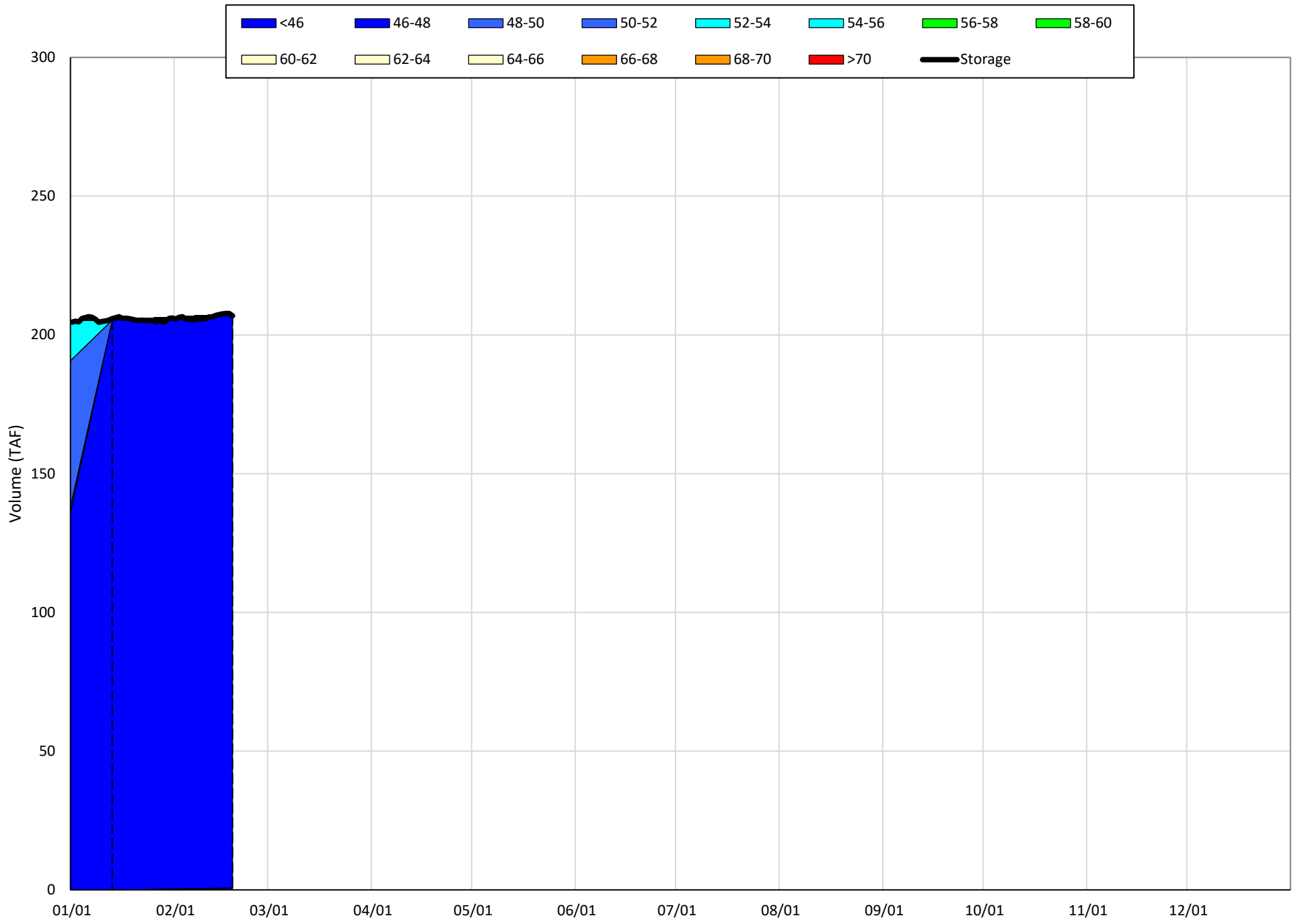
(Historic - Current) / Current

Whiskeytown Lake Isothermobaths & Cold Water Pool Statistics

2021

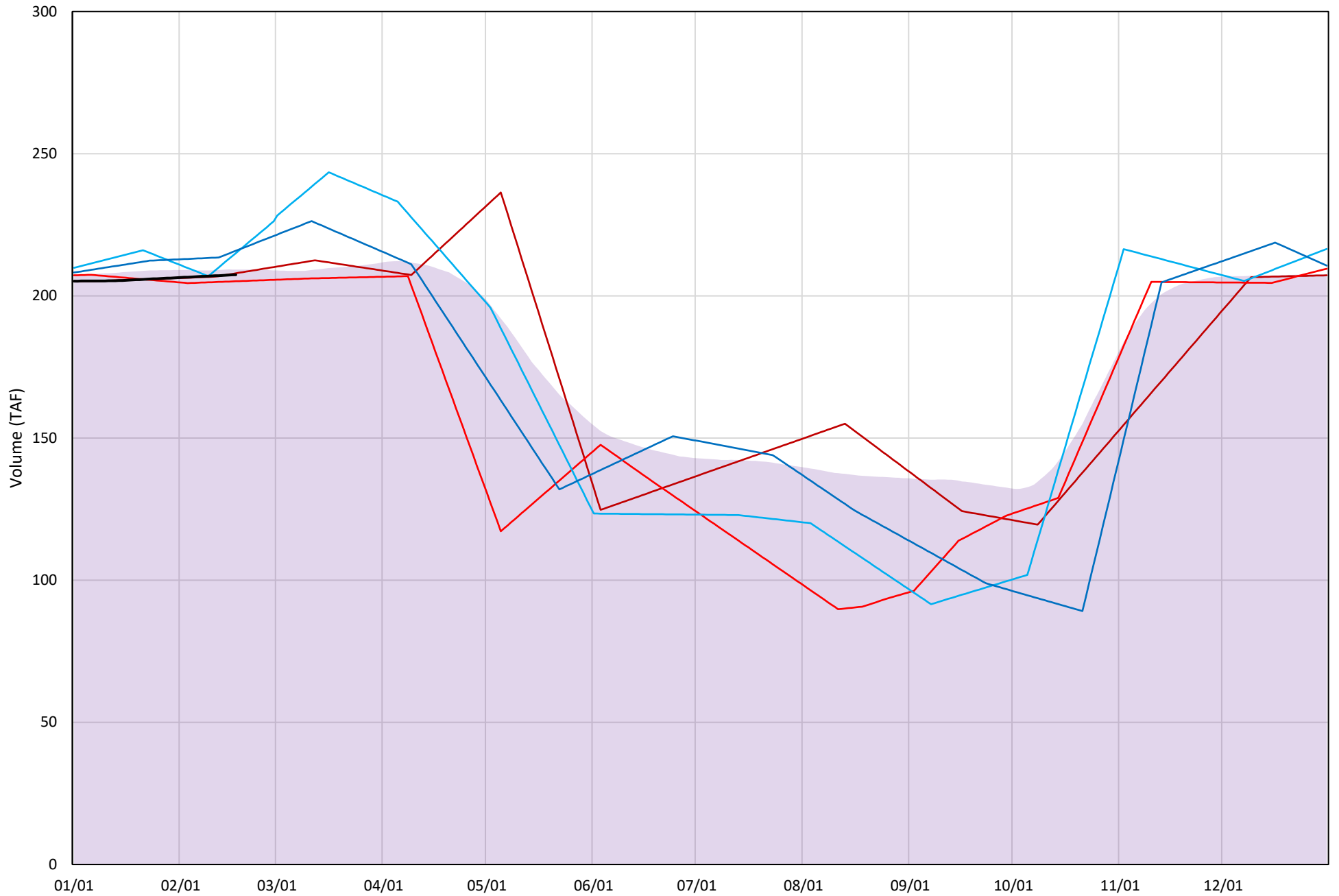
Page	Description
24	- Whiskeytown Lake Isothermobaths Plot
25	- Whiskeytown Lake Cold Water Pool Volume $\leq 60^{\circ}\text{F}$
26	- Whiskeytown Lake Cold Water Pool Volume $\leq 58^{\circ}\text{F}$
27	- Whiskeytown Lake Cold Water Pool Volume $\leq 56^{\circ}\text{F}$
28	- Whiskeytown Lake Cold Water Pool Volume $\leq 60^{\circ}\text{F}$ - Percent Exceedances
29	- Whiskeytown Lake Cold Water Pool Volume $\leq 58^{\circ}\text{F}$ - Percent Exceedances
30	- Whiskeytown Lake Cold Water Pool Volume $\leq 56^{\circ}\text{F}$ - Percent Exceedances
31	- Whiskeytown Lake Cold Water Pool Comparison by Year

Whiskeytown Lake Isothermobaths Plot - 2021



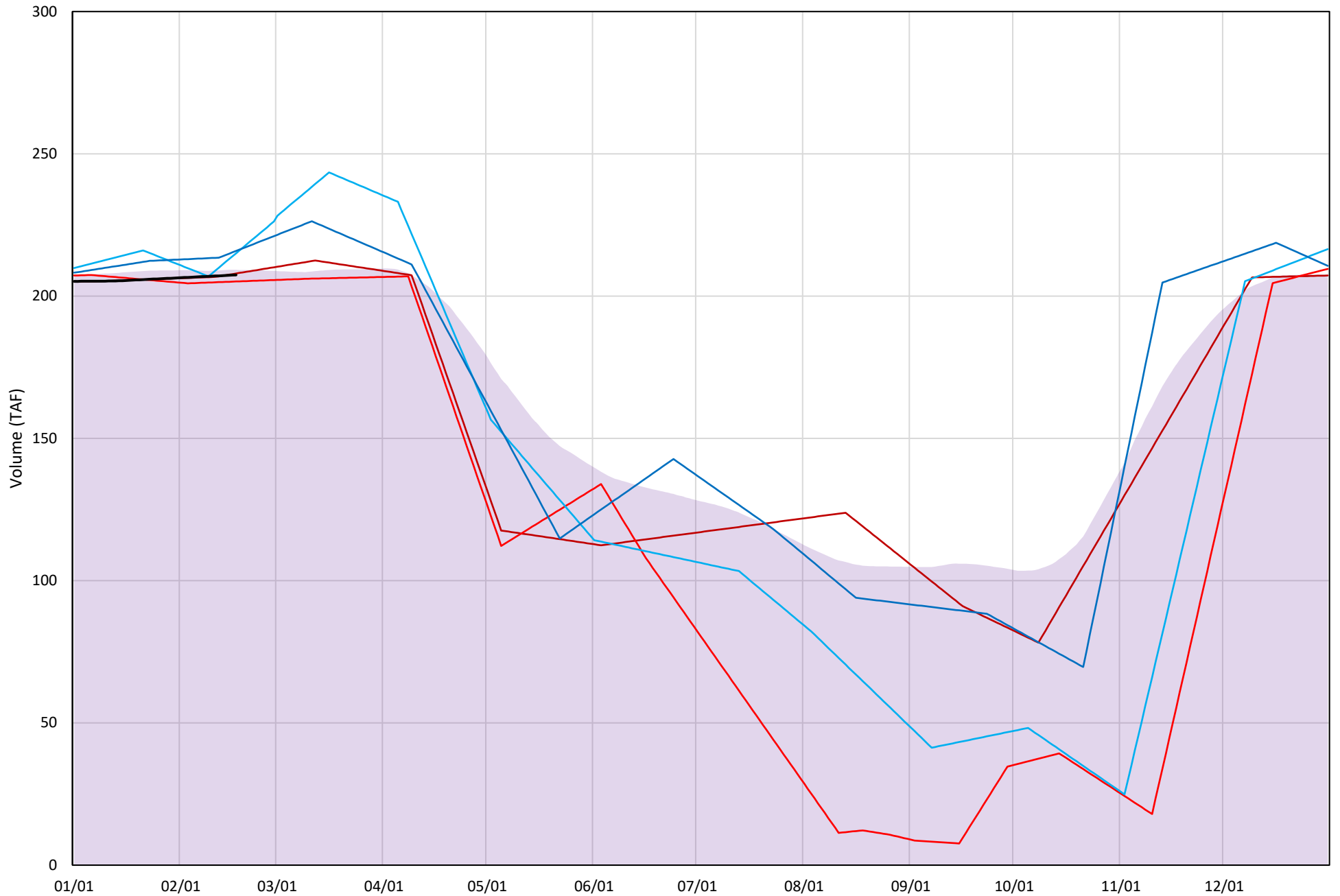
Whiskeytown Lake Cold Water Pool Volume $\leq 60^{\circ}\text{F}$

Avg (2000-2020) 2014 2015 2016 2019 2021



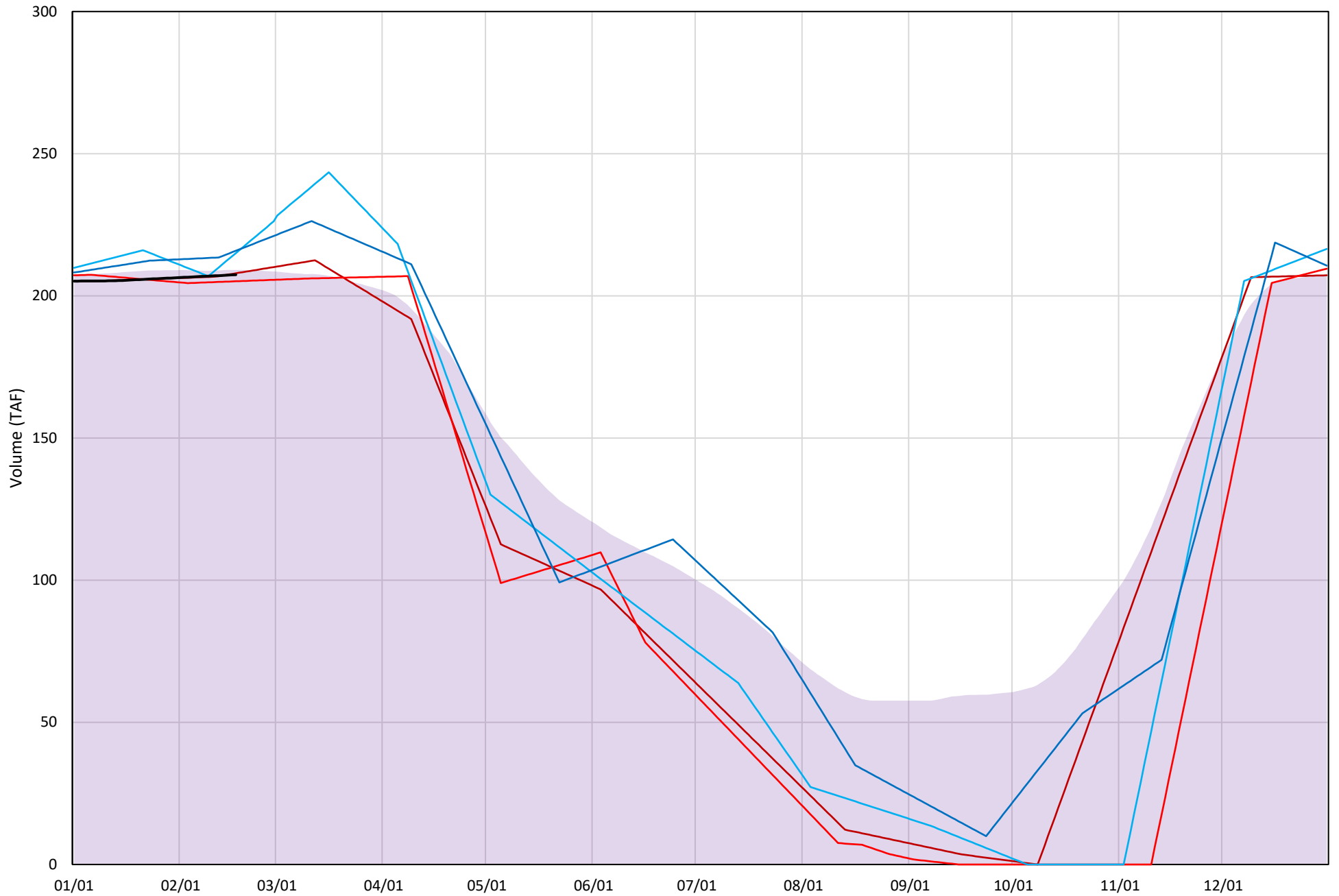
Whiskeytown Lake Cold Water Pool Volume $\leq 58^{\circ}\text{F}$

Avg (2000-2020) 2014 2015 2016 2019 2021



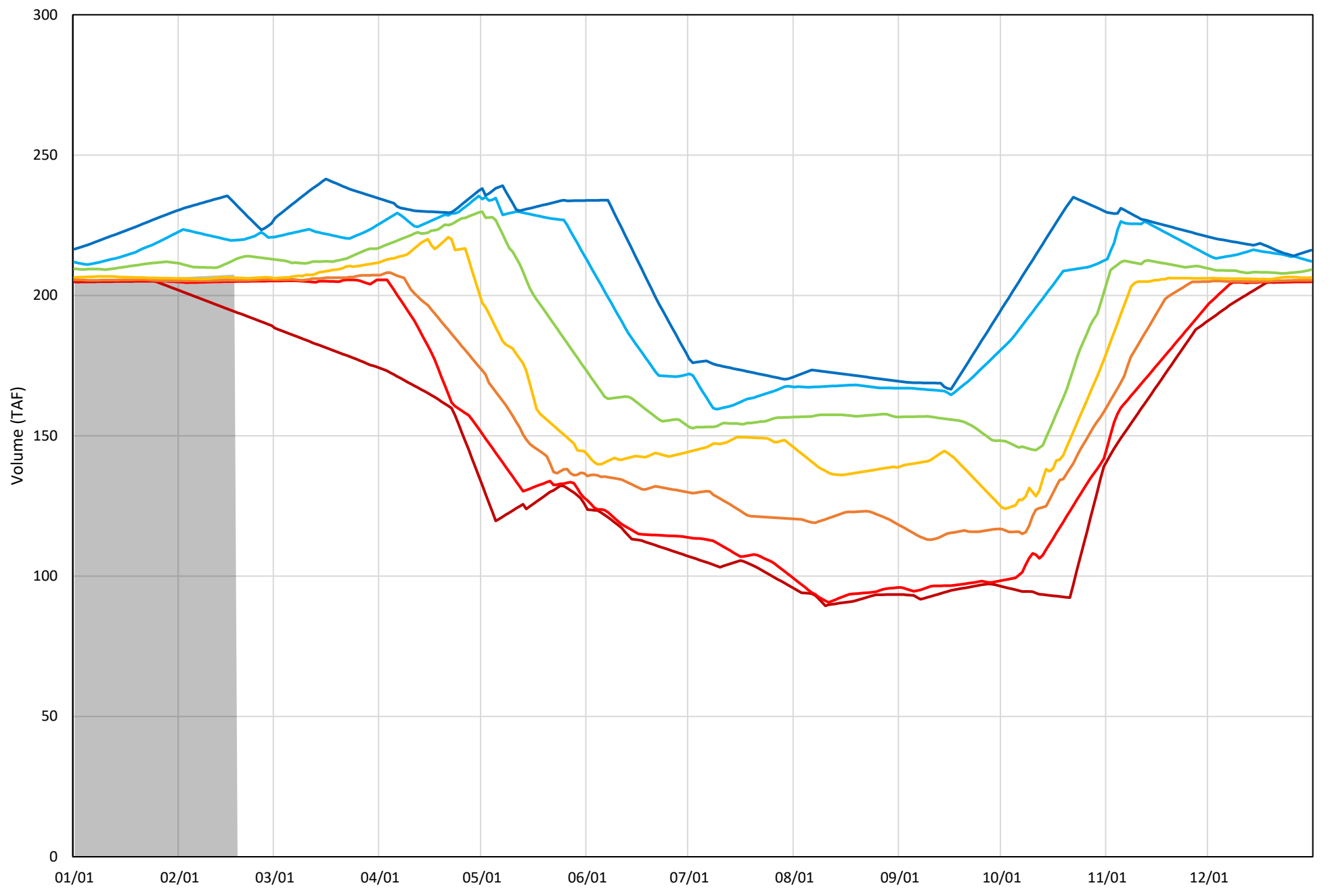
Whiskeytown Lake Cold Water Pool Volume $\leq 56^{\circ}\text{F}$

Avg (2000-2020) 2014 2015 2016 2019 2021



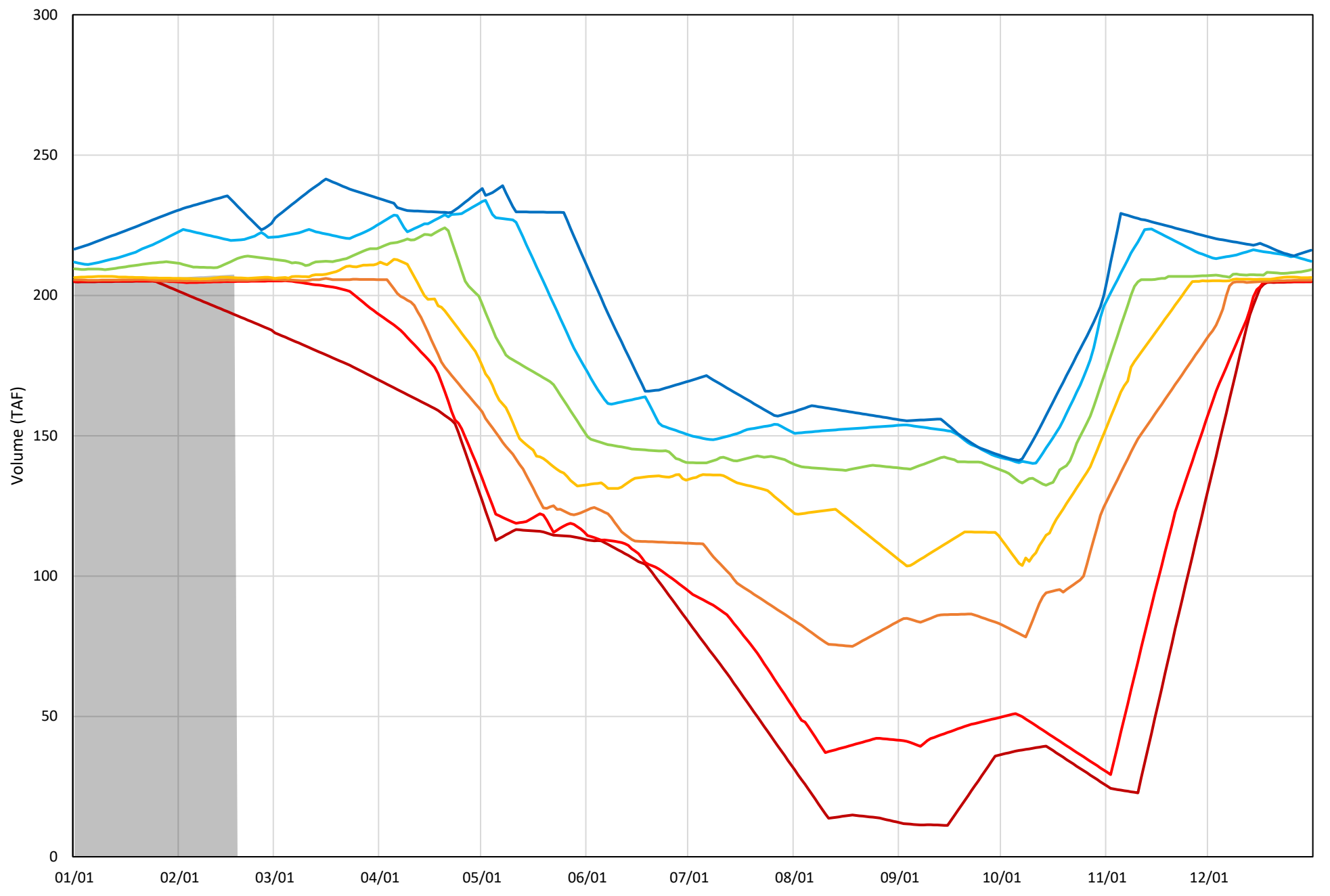
Whiskeytown Lake Cold Water Pool Volume $\leq 60^{\circ}\text{F}$ - Percent Exceedances (2000-2020)

2021 95 90 75 50 25 10 5



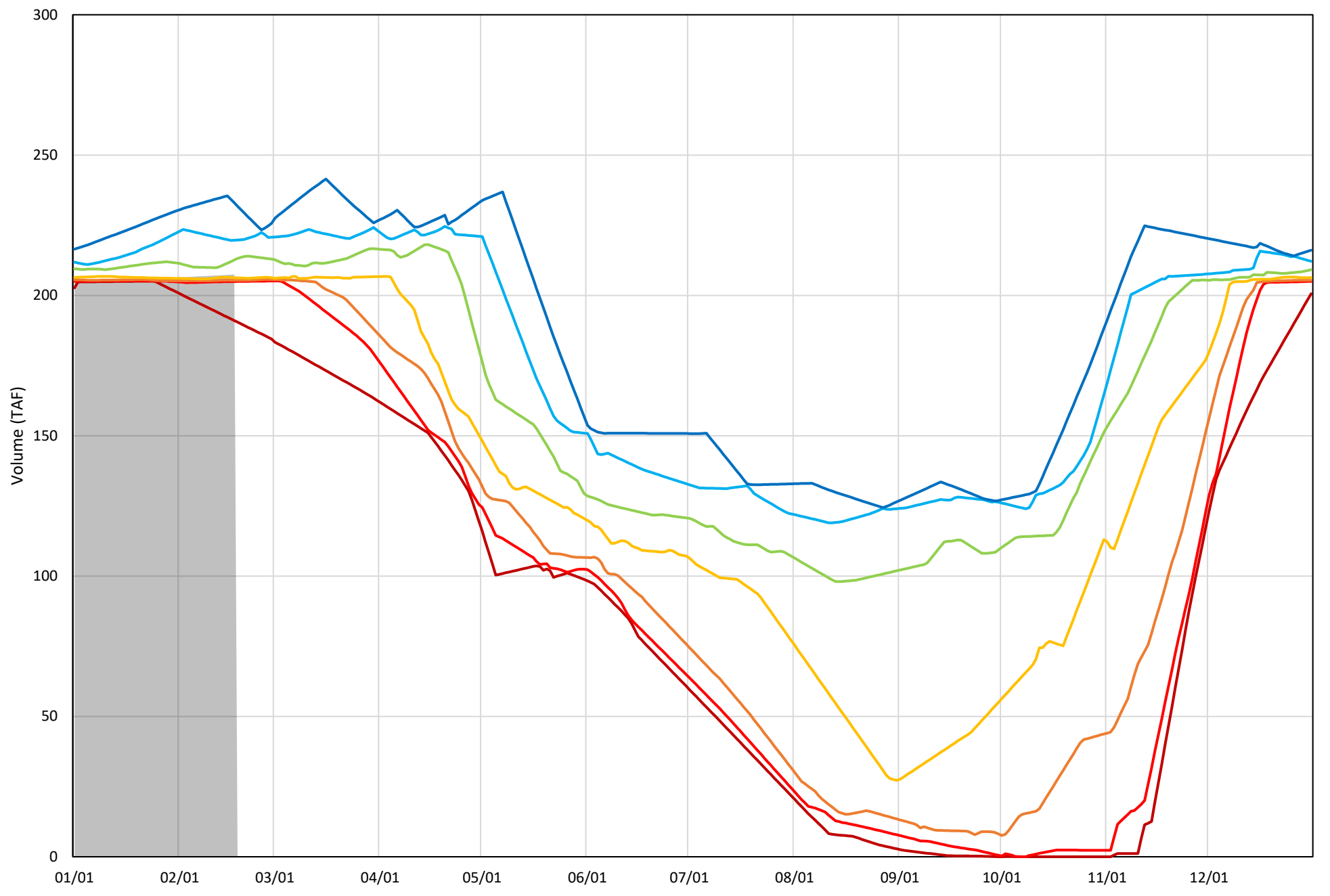
Whiskeytown Lake Cold Water Pool Volume $\leq 58^{\circ}\text{F}$ - Percent Exceedances (2000-2020)

2021 95 90 75 50 25 10 5



Whiskeytown Lake Cold Water Pool Volume $\leq 56^{\circ}\text{F}$ - Percent Exceedances (2000-2020)

2021 95 90 75 50 25 10 5



Whiskeytown Cold Water Pool Comparison by Year (for Specified Date)

Feb-18 2021	Δ TAF				% Δ			
	≤60°	≤58°	≤56°	Abs. Avg.	≤60°	≤58°	≤56°	Abs. Avg.
2000	1	1	1	1	1	1	1	1
2001	13	13	13	13	7	7	7	7
2002	-1	-1	-1	1	0	0	0	0
2003	-1	-1	-1	1	0	0	0	0
2004	-1	-1	-1	1	0	0	0	0
2005	3	3	3	3	1	1	1	1
2006	0	0	0	0	0	0	0	0
2007	-1	-1	-1	1	0	0	0	0
2008	1	1	1	1	0	0	0	0
2009	4	4	4	4	2	2	2	2
2010	13	13	13	13	6	6	6	6
2011	-1	-1	-1	1	-1	-1	-1	1
2012	-13	-14	-17	15	-6	-7	-8	7
2013	-1	-1	-1	1	-1	-1	-1	1
2014	2	2	2	2	1	1	1	1
2015	-1	-1	-1	1	-1	-1	-1	1
2016	9	9	9	9	4	4	4	4
2017	28	28	28	28	14	14	14	14
2018	-1	-1	-1	1	-1	-1	-1	1
2019	10	10	10	10	5	5	5	5
2020	0	0	0	0	0	0	0	0

}

Historic - Current

}

(Historic - Current) / Current