

Northern CVP Water Temperature Report

February - 2019

Page	Description
1	- Mean Daily Water Temperature, Release Flow Rates and Air Temperatures with Monthly Averages
2	- Redding 10-Day Forecasted Air Temperatures
3	- Sacramento River Mean Daily Water Temperature, Air Temperature and 10-Day Forecasted Air Temperature Plot - Water Temperature Measuring Station Details - Temperature Control Point Details
4	- Daily Maximum and 7DADM
5	- Shasta Lake Isothermobaths Plot
6	- Trinity Lake Isothermobaths Plot
7	- Whiskeytown Lake Isothermobaths Plot
x	- TCD Configuration (External Link)



All Data in this Report is Preliminary and Subject to Change

DATE	Mean Daily Water Temperatures (°F)													Mean Daily Release (CFS)			Mean Daily Air Temperatures (°F)					
	TCD ¹	SHD	SPP ¹	KWK	SAC	CCR	BSF ²	JLF	BND	RDB	IGO	LWS	----- ³	Shasta Generation	Spring Creek P.P.	Keswick Total	RDD	BSF	RDB	LWS		
Jan	51.5	51.0	48.6	50.3	50.1	50.4	49.3	49.2	48.9	49.1	47.9	42.9	-	2334	743	3587	50.7	47.4	48.8	40.3		
02/01	50.5	49.6	48.1	50.0	50.0	50.4	51.0	51.5	#	-	52.0	48.4	44.8	-	2251	327	3151	53.5	53.0	54.5	-	
02/02	50.2	49.8	47.9	50.2	#	-	50.6	50.8	51.0	#	-	51.5	49.1	44.7	-	2097	538	3163	52.0	50.8	51.6	-
02/03	50.3	49.7	48.0	49.9	#	-	50.3	50.3	50.5	#	-	50.8	49.0	45.1	-	2223	340	3236	48.5	47.8	49.7	-
02/04	50.0	49.4	48.1	49.8	#	-	49.8	47.7	48.3	#	-	49.1	47.8	44.1	-	2039	906	3235	44.0	43.5	45.7	-
02/05	49.9	49.3	48.0	49.4	#	-	49.5	47.0	47.0	#	-	47.2	46.0	42.8	-	989	1647	3228	41.0	40.6	42.2	-
02/06	50.0	49.3	48.0	49.0	!	-	49.0	47.3	46.9	#	-	46.9	46.2	43.4	-	1978	542	3314	40.0	39.8	40.9	-
02/07	49.9	49.4	47.8	48.8	48.6	48.6	47.0	46.6	#	-	46.4	46.5	43.8	-	1833	729	3388	40.5	37.8	39.2	-	
02/08	50.0	49.3	47.8	48.7	48.5	48.7	47.8	47.5	#	-	47.0	46.8	43.7	-	2217	481	3397	43.5	42.4	43.0	-	
02/09	49.9	49.0	47.7	48.5	48.2	48.3	47.8	47.7	#	-	47.7	46.1	42.6	-	2254	469	3300	42.0	43.4	43.9	-	
02/10	49.4	48.9	47.5	48.4	47.9	47.9	46.0	45.9	#	-	46.4	45.2	42.5	-	1987	382	3296	38.0	38.4	39.8	-	
02/11	49.4	48.7	47.6	48.4	48.1	48.1	46.5	46.2	#	-	45.7	45.6	42.9	-	2866	556	3303	40.5	43.0	42.1	-	
02/12	49.4	48.7	47.4	? 48.2	47.9	48.0	47.2	47.0	#	-	46.6	? 45.8	42.6	-	1718	1355	3291	43.5	41.6	42.0	-	
02/13	49.3	48.5	46.8	? 47.1	44.8	? 45.2	39.6	40.4	#	-	42.3	? 41.9	40.8	-	2130	990	3292	36.0	35.0	37.9	-	
02/14	49.3	48.9	46.8	46.9	43.9	45.4	40.7	40.3	#	-	40.2	44.4	42.5	-	802	1404	3361	43.5	43.3	47.1	-	
02/15	49.6	48.5	46.9	47.0	46.6	47.1	45.2	44.4	#	-	43.7	45.8	42.7	-	673	1654	3389	43.5	46.3	46.3	-	
02/16	48.8	48.3	46.8	47.2	47.1	47.5	46.8	46.4	#	-	45.9	46.0	42.6	-	2022	585	3391	47.0	46.1	46.3	-	
02/17	48.9	48.4	46.6	47.7	47.4	47.6	46.9	46.7	#	-	46.9	45.1	42.0	-	1962	494	3391	44.5	42.3	44.0	-	
02/18	49.0	48.3	46.5	47.7	47.5	47.8	46.4	46.0	#	-	46.3	44.5	41.6	-	1428	1877	3389	44.5	42.9	44.7	-	
02/19	49.3	48.3	46.6	47.5	47.3	47.6	46.4	46.1	#	-	46.1	44.5	41.6	-	2442	406	3345	44.5	43.2	45.0	-	
02/20	49.1	48.2	46.5	47.8	47.7	48.1	47.4	47.3	#	-	47.0	45.0	42.1	-	1867	731	3346	44.5	44.9	45.7	-	
02/21	48.8	48.2	46.4	47.7	47.7	47.9	47.3	47.2	#	-	47.4	44.5	41.8	-	1938	1363	3346	45.0	43.9	45.2	-	
02/22	48.7	48.3	46.3	47.5	47.4	47.6	46.6	46.3	#	-	46.5	44.2	41.1	-	2245	1003	3339	47.0	43.3	44.7	-	
02/23	48.6	47.9	46.4	47.5	47.3	47.5	46.8	46.4	#	-	46.5	44.6	41.5	-	2812	470	3340	42.0	41.8	42.7	-	
02/24	48.5	47.7	46.2	47.7	47.4	47.6	47.3	47.3	#	-	47.1	45.2	42.3	-	2125	887	3339	46.5	47.3	47.5	-	
02/25	48.9	47.8	46.2	47.4	47.2	47.5	47.3	47.4	#	-	47.4	45.3	40.4	-	1208	663	3342	49.5	50.7	49.4	-	
02/26	50.2	48.8	46.3	47.8	47.8	48.0	47.9	47.9	#	-	47.9	? 47.3	39.7	-	25	428	5047	50.5	50.9	50.0	-	
02/27	48.1	48.6	46.2	48.0	48.4	48.5	48.7	48.3	#	-	48.2	? 47.7	42.3	-	1690	1692	7037	53.5	52.9	52.6	-	
02/28	48.2	47.5	46.0	48.3	48.5	48.7	49.0	48.9	#	-	49.3	? 46.5	42.9	-	7726	2973	16746	47.5	50.6	49.6	-	
-																						
-																						
-																						
Feb	49.4	48.7	47.0	48.2	47.5	48.2	47.0	46.9	-	47.0	45.9	42.5	-	2055	925	3991	44.9	44.6	45.5	-		

Total CFS	57547	25892	111742
Total AF	114142	51356	221636

Legend

Notes

- ? = 1-9 hours of data missing (Average includes estimations)
- ! = 10 or more hours of data missing (Average not calculated)
- # = Station out of service
- ↑ = Record high air temperature
- ↓ = Record low air temperature
- ☐ = Monthly Averages

- ¹ Temperatures are weighted averages based on individual penstock flow and temperature
- Highlighted cells in the TCD column indicate a TCD change was made on that day
- ² Current control point (see page 3 for more details)
- ³ Column not used this month

D A T E	Redding (RDD) Daily Air Temperatures (°F)																																					
	Actual			Forecasted																																		
	Previous Day			Current Day			1 Day			2 Days			3 Days			4 Days			5 Days			6 Days			7 Days			8 Days			9 Days			10 Days				
	↓	↑	Avg	↓	↑	Avg	↓	↑	Avg	↓	↑	Avg	↓	↑	Avg	↓	↑	Avg	↓	↑	Avg	↓	↑	Avg	↓	↑	Avg	↓	↑	Avg	↓	↑	Avg	↓	↑	Avg		
02/01	41	69	55.0	51	57	54.0	47	55	51.0	42	54	48.0	35	48	41.5	28	51	39.5	28	55	41.5	29	55	42.0	35	56	45.5	37	58	47.5	36	61	48.5	43	62	52.5		
02/02	50	57	53.5	49	55	52.0	43	52	47.5	38	48	43.0	30	50	40.0	28	51	39.5	27	52	39.5	32	50	41.0	38	53	45.5	40	53	46.5	36	57	46.5	39	63	51.0		
02/03	48	56	52.0	47	52	49.5	38	47	42.5	28	47	37.5	28	51	39.5	28	50	39.0	32	49	40.5	34	49	41.5	39	57	48.0	39	57	48.0	37	60	48.5	39	63	51.0		
02/04	46	51	48.5	42	47	44.5	28	48	38.0	27	51	39.0	28	51	39.5	32	50	41.0	33	49	41.0	35	51	43.0	40	55	47.5	39	52	45.5	38	58	48.0	40	56	48.0		
02/05	38	50	44.0	32	49	40.5	28	50	39.0	29	51	40.0	36	50	43.0	35	49	42.0	35	49	42.0	33	50	41.5	37	52	44.5	37	58	47.5	40	60	50.0	40	59	49.5		
02/06	31	51	41.0	30	50	40.0	28	50	39.0	34	49	41.5	34	48	41.0	36	49	42.5	30	49	39.5	33	50	41.5	37	57	47.0	43	60	51.5	40	61	50.5	39	59	49.0		
02/07	30	50	40.0	31	50	40.5	34	49	41.5	34	48	41.0	35	47	41.0	30	49	39.5	33	50	41.5	34	53	43.5	37	58	47.5	38	51	44.5	35	55	45.0	39	58	48.5		
02/08	31	50	40.5	37	50	43.5	34	48	41.0	30	47	38.5	30	48	39.0	35	50	42.5	35	50	42.5	36	52	44.0	38	50	44.0	38	53	45.5	36	57	46.5	38	60	49.0		
02/09	36	51	43.5	36	48	42.0	29	47	38.0	32	47	39.5	37	50	43.5	36	49	42.5	32	52	42.0	36	49	42.5	39	52	45.5	37	53	45.0	35	56	45.5	40	60	50.0		
02/10	35	49	42.0	30	47	38.5	33	45	39.0	39	49	44.0	36	50	43.0	32	53	42.5	35	50	42.5	35	50	42.5	36	54	45.0	38	60	49.0	38	63	50.5	41	64	52.5		
02/11	28	48	38.0	33	44	38.5	37	46	41.5	38	49	43.5	34	53	43.5	37	52	44.5	35	52	43.5	34	51	42.5	44	59	51.5	40	63	51.5	42	65	53.5	42	64	53.0		
02/12	32	49	40.5	41	47	44.0	38	49	43.5	39	55	47.0	37	50	43.5	35	51	43.0	33	52	42.5	31	54	42.5	35	56	45.5	44	60	52.0	40	63	51.5	42	65	53.5		
02/13	41	46	43.5	33	42	37.5	41	55	48.0	36	48	42.0	36	49	42.5	33	51	42.0	30	53	41.5	30	53	41.5	35	57	46.0	43	61	52.0	39	63	51.0	42	65	53.5		
02/14	33	39	36.0	38	55	46.5	38	48	43.0	37	50	43.5	32	52	42.0	32	53	42.5	32	53	42.5	35	51	43.0	38	55	46.5	39	56	47.5	37	58	47.5	39	64	51.5		
02/15	36	51	43.5	36	48	42.0	38	51	44.5	32	51	41.5	32	53	42.5	32	52	42.0	35	51	43.0	34	51	42.5	35	56	45.5	41	58	49.5	36	61	48.5	39	65	52.0		
02/16	36	51	43.5	38	50	44.0	31	51	41.0	30	54	42.0	29	52	40.5	32	50	41.0	30	47	38.5	29	51	40.0	36	58	47.0	40	58	49.0	40	58	49.0	42	62	52.0		
02/17	38	56	47.0	37	51	44.0	27	53	40.0	27	53	40.0	30	50	40.0	30	50	40.0	30	53	41.5	32	52	42.0	40	58	49.0	46	56	51.0	44	61	52.5	42	66	54.0		
02/18	36	53	44.5	35	52	43.5	29	54	41.5	32	51	41.5	30	52	41.0	30	53	41.5	33	52	42.5	37	51	44.0	43	59	51.0	40	61	50.5	45	67	56.0	46	70	58.0		
02/19	34	55	44.5	33	55	44.0	34	51	42.5	30	53	41.5	32	55	43.5	31	51	41.0	35	51	43.0	34	52	43.0	39	54	46.5	37	59	48.0	42	65	53.5	44	70	57.0		
02/20	31	58	44.5	36	52	44.0	34	54	44.0	30	56	43.0	35	52	43.5	37	51	44.0	35	52	43.5	37	51	44.0	45	59	52.0	42	61	51.5	40	63	51.5	40	62	51.0		
02/21	35	54	44.5	37	53	45.0	31	56	43.5	34	52	43.0	38	53	45.5	41	53	47.0	42	55	48.5	43	56	49.5	46	58	52.0	46	65	55.5	45	65	55.0	42	66	54.0		
02/22	35	55	45.0	35	56	45.5	33	52	42.5	39	53	46.0	42	53	47.5	44	55	49.5	44	58	51.0	43	61	52.0	47	59	53.0	49	59	54.0	47	61	54.0	42	63	52.5		
02/23	35	59	47.0	32	52	42.0	40	54	47.0	43	53	48.0	45	55	50.0	46	58	52.0	43	59	51.0	40	57	48.5	41	55	48.0	47	60	53.5	46	63	54.5	42	63	52.5		
02/24	31	53	42.0	43	51	47.0	43	52	47.5	43	53	48.0	45	58	51.5	41	56	48.5	37	58	47.5	41	55	48.0	43	59	51.0	44	62	53.0	41	61	51.0	41	63	52.0		
02/25	43	50	46.5	50	52	51.0	45	53	49.0	45	57	51.0	38	56	47.0	35	58	46.5	40	54	47.0	42	58	50.0	36	61	48.5	43	63	53.0	41	65	53.0	41	66	53.5		
02/26	48	51	49.5	49	53	51.0	45	56	50.5	37	56	46.5	36	58	47.0	40	54	47.0	41	61	51.0	39	61	50.0	40	61	50.5	43	63	53.0	46	63	54.5	45	61	53.0		
02/27	49	52	50.5	49	56	52.5	38	55	46.5	36	57	46.5	39	55	47.0	42	60	51.0	43	61	52.0	43	57	50.0	46	61	53.5	46	62	54.0	46	65	55.5	44	66	55.0		
02/28	48	59	53.5	40	54	47.0	38	55	46.5	41	58	49.5	42	58	50.0	44	60	52.0	42	58	50.0	45	57	51.0	44	59	51.5	40	60	50.0	40	64	52.0	41	70	55.5		
-																																						
-																																						
-																																						

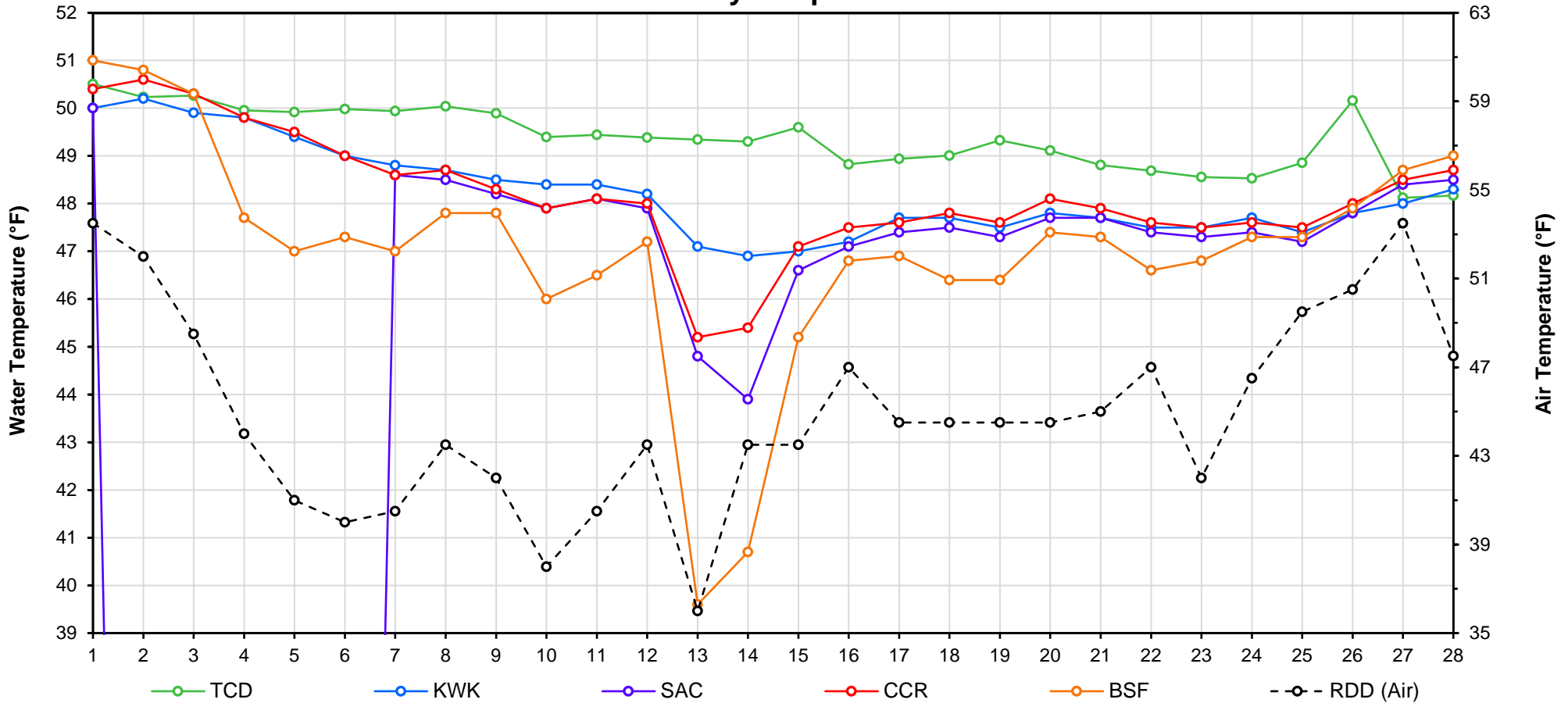
Web Links

- [10-Day Min/Max Forecast](#)
- [Previous Days Min/Max Actuals](#)

Legend

- NR = Forecasted temperatures not recorded
- 100** = Previous day actual temperatures in red and bolded indicate a record temperature for that date

Mean Daily Temperatures



Station Details			
Code	Body of Water	Location ¹	CDEC Link
TCD	N/A	Shasta Power Plant	N/A
SHD	Sacramento River	0.3 miles downstream of Shasta Power Plant	Click Here
SPP	N/A	Spring Creek Power Plant	N/A
KWK	Sacramento River	0.8 miles downstream of Keswick Dam	Click Here
SAC	Sacramento River	4.8 miles downstream of Keswick Dam	Click Here
CCR	Sacramento River	9.7 miles downstream of Keswick Dam	Click Here
BSF	Sacramento River	25 miles downstream of Keswick Dam	Click Here
JLF	Sacramento River	34 miles downstream of Keswick Dam	Click Here
BND	Sacramento River	41 miles downstream of Keswick Dam	Click Here
RDB	Sacramento River	58 miles downstream of Keswick Dam	Click Here
IGO	Clear Creek	7.3 miles downstream of Whiskeytown Dam	Click Here
LWS	Trinity River	1.1 miles downstream of Lewiston Dam	Click Here
DGC ²	Trinity River	19 miles downstream of Lewiston Dam	Click Here
NFH ³	Trinity River	38 miles downstream of Lewiston Dam	Click Here

Temperature Control Point		
Point	Temp. (°F)	Begin Date
BSF	56.0	05/25/2018

Notes

¹ Distances are approximate

² DGC is only reported in September

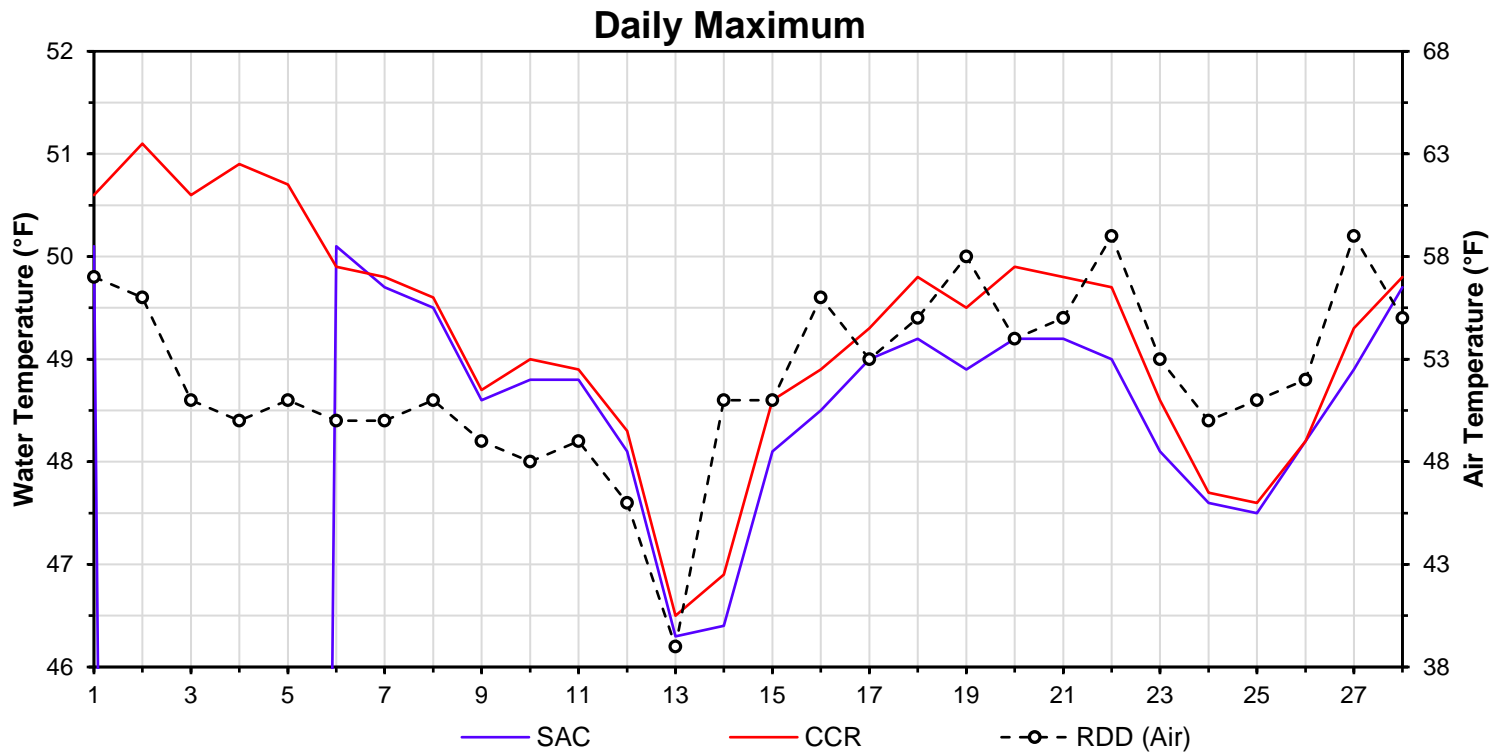
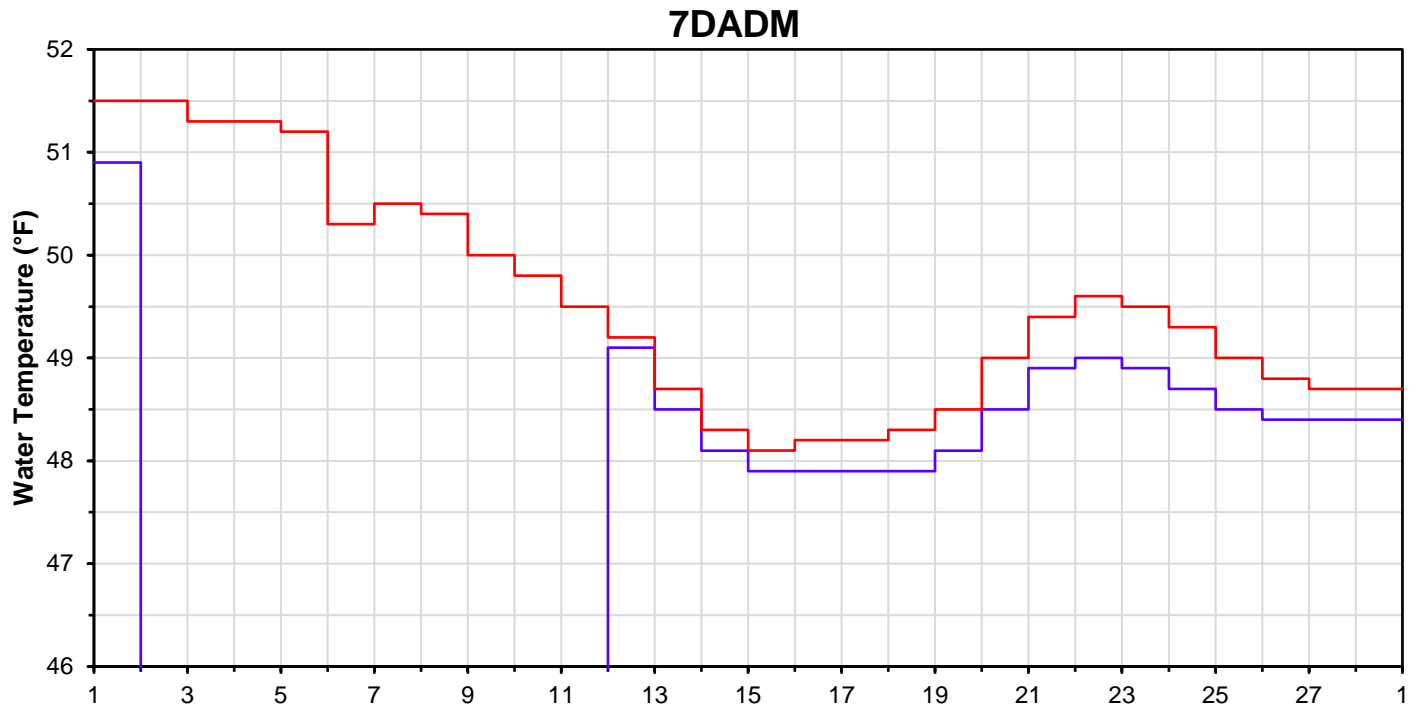
³ NFH is only reported in October, November and December

DATE	Daily Max		7DADM ¹		DAT ²
	SAC	CCR	SAC	CCR	BSF
02/01	50.1	50.6	50.9	51.5	51.0
02/02	-	51.1	-	51.5	50.8
02/03	-	50.6	-	51.3	50.3
02/04	-	50.9	-	51.3	47.7
02/05	-	50.7	-	51.2	47.0
02/06	50.1	49.9	-	50.3	47.3
02/07	49.7	49.8	-	50.5	47.0
02/08	49.5	49.6	-	50.4	47.8
02/09	48.6	48.7	-	50.0	47.8
02/10	48.8	49.0	-	49.8	46.0
02/11	48.8	48.9	-	49.5	46.5
02/12	48.1	48.3	49.1	49.2	47.2
02/13	46.3	46.5	48.5	48.7	39.6
02/14	46.4	46.9	48.1	48.3	40.7
02/15	48.1	48.6	47.9	48.1	45.2
02/16	48.5	48.9	47.9	48.2	46.8
02/17	49.0	49.3	47.9	48.2	46.9
02/18	49.2	49.8	47.9	48.3	46.4
02/19	48.9	49.5	48.1	48.5	46.4
02/20	49.2	49.9	48.5	49.0	47.4
02/21	49.2	49.8	48.9	49.4	47.3
02/22	49.0	49.7	49.0	49.6	46.6
02/23	48.1	48.6	48.9	49.5	46.8
02/24	47.6	47.7	48.7	49.3	47.3
02/25	47.5	47.6	48.5	49.0	47.3
02/26	48.2	48.2	48.4	48.8	47.9
02/27	48.9	49.3	48.4	48.7	48.7
02/28	49.7	49.8	48.4	48.7	49.0
-					
-					
-					

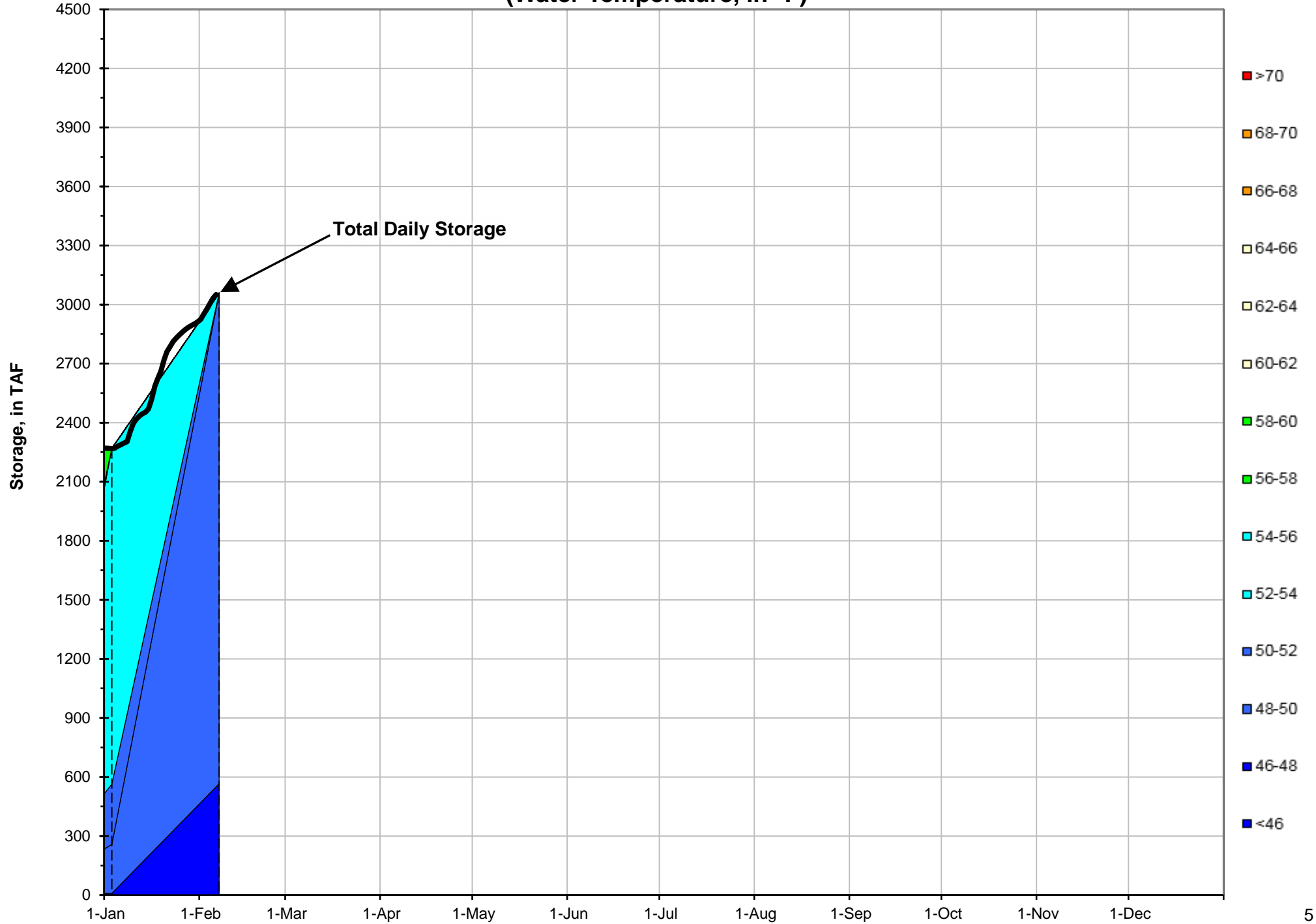
Notes

¹ 7DADM = 7-Day Average
Daily Maximum

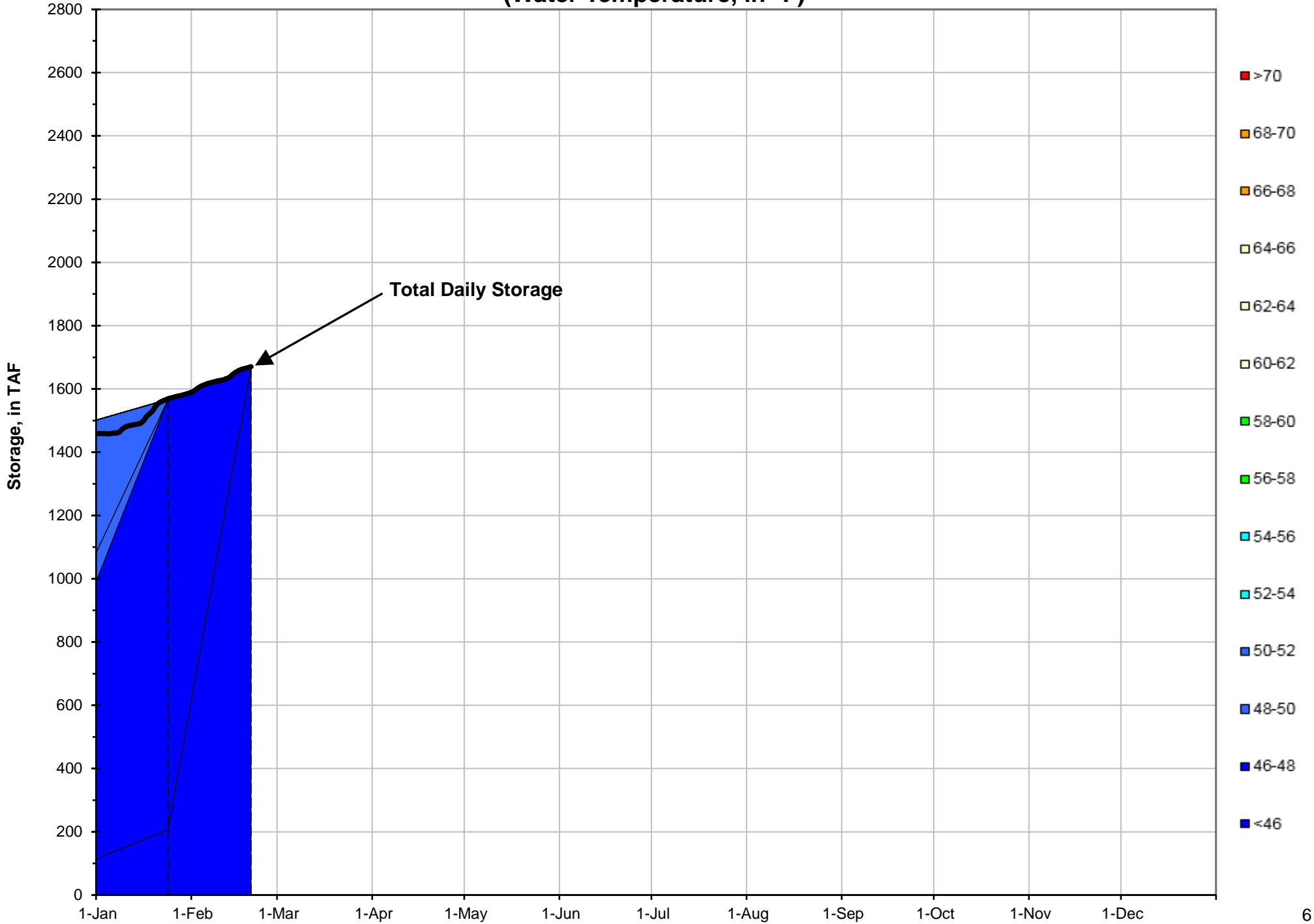
² DAT = Daily Average
Temperature



Shasta Lake Isothermobaths - 2019 (Water Temperature, in °F)



Trinity Lake Isothermobaths - 2019 (Water Temperature, in °F)



Whiskeytown Lake Isothermobaths - 2019 (Water Temperature, in °F)

