

Northern CVP Water Temperature Report

February - 2018

Page	Description
1	- Mean Daily Water Temperature, Release Flow Rates and Air Temperatures with Monthly Averages
2	- Redding 10-Day Forecasted Air Temperatures
3	- Sacramento River Mean Daily Water Temperature, Air Temperature and 10-Day Forecasted Air Temperature Plot - Water Temperature Measuring Station Details - Temperature Control Point Details
4	- Lake Shasta Isothermalbaths Plot
5	- Daily Maximum and 7DADM
x	- TCD Configuration (External Link)



All Data in this Report is Preliminary and Subject to Change

DATE	Mean Daily Water Temperatures (°F)													Mean Daily Release (CFS)			Mean Daily Air Temperatures (°F)				
	TCD ¹	SHD	SPP ¹	KWK	SAC	CCR	BSF ²	JLF	BND	RDB	IGO	LWS	----- ³	Shasta Generation	Spring Creek P.P.	Keswick Total	RDD	BSF	RDB	LWS	
Jan	51.8	51.2	48.9	51.2	51.1	51.2	50.7	50.5	50.7	50.6	47.7	44.8	-	3484	107	3733	50.0	47.9	49.4	42.2	
02/01	51.3	50.5	48.9	50.6	50.8	51.2	51.2	51.0	51.0	50.7	48.0	45.3	-	3432	14	3875	↑ 62.5	55.6	59.4	44.3	
02/02	51.0	50.5	49.0	50.6	50.8	51.3	51.7	51.7	51.9	52.0	48.0	45.5	-	3340	14	3875	↑ 63.5	58.6	64.2	44.7	
02/03	50.9	50.4	49.0	50.9	51.0	51.5	52.2	52.5	52.8	52.9	48.0	45.7	-	3468	14	3850	↑ 69.0	65.0	67.6	46.1	
02/04	51.0	!	-	49.1	51.0	51.3	51.9	52.9	53.2	53.5	48.3	45.9	-	3121	14	3842	↑ 66.5	61.1	63.2	46.7	
02/05	51.1	?	50.3	49.1	51.0	51.2	51.8	52.8	53.2	53.6	48.2	46.1	-	3986	45	3843	↑ 64.0	57.3	62.6	46.9	
02/06	50.9	?	50.3	48.9	50.8	50.9	51.3	51.9	52.3	52.8	47.5	45.4	-	3801	49	3843	↑ 61.5	57.2	61.0	42.0	
02/07	51.0	50.5	49.2	50.7	50.9	51.3	51.7	51.7	51.9	52.2	48.1	45.2	-	3875	17	3843	↑ 62.5	54.8	59.0	43.8	
02/08	51.1	50.4	49.2	50.6	50.8	51.3	51.7	51.8	52.1	52.4	48.4	45.5	-	3494	14	3845	↑ 58.0	52.8	58.4	45.5	
02/09	51.3	50.4	49.1	50.7	50.7	50.9	51.3	51.5	51.8	52.4	48.2	46.1	-	3448	14	3842	↑ 56.0	51.4	58.6	43.8	
02/10	51.4	?	50.7	49.2	50.5	50.5	50.7	50.7	50.8	51.4	47.8	46.0	-	3297	14	3844	↑ 51.5	49.2	54.2	43.0	
02/11	51.2	!	-	49.1	50.3	50.1	50.3	49.8	49.4	49.5	49.9	47.2	-	2994	14	3844	↑ 47.5	41.8	46.3	35.3	
02/12	51.2	?	50.5	49.1	50.4	50.2	50.3	49.8	49.4	49.3	49.3	47.3	-	4338	14	3742	↑ 47.5	46.9	48.6	39.2	
02/13	51.4	?	50.2	49.1	50.4	50.3	50.4	49.8	49.3	49.2	49.3	47.2	-	3804	21	3640	↑ 50.5	47.0	49.7	37.7	
02/14	50.9	50.2	49.1	50.3	50.1	50.3	49.9	49.5	?	49.6	49.6	47.1	-	3649	15	3552	↑ 45.5	43.1	45.3	38.5	
02/15	50.9	50.3	49.0	50.4	50.2	50.3	49.8	49.5	49.5	49.6	47.2	44.2	-	3502	26	3422	↑ 53.0	49.4	51.3	35.8	
02/16	50.9	50.2	49.2	50.4	50.4	50.7	50.4	49.9	49.8	49.9	47.6	44.2	-	3390	23	3344	↑ 52.5	48.6	52.2	39.4	
02/17	50.7	50.1	49.2	50.3	50.5	51.0	51.1	50.9	51.0	51.0	48.2	44.8	-	2717	14	3269	↑ 53.5	50.6	53.3	43.4	
02/18	50.4	49.4	49.1	50.4	50.1	50.5	51.0	51.0	51.2	51.3	47.6	44.9	-	2850	14	3180	↑ 46.0	49.0	49.6	40.8	
02/19	50.6	49.4	49.2	50.2	49.9	49.8	49.2	48.8	48.9	49.8	46.6	43.9	-	2562	38	3130	↓ 39.0	38.0	40.7	32.2	
02/20	50.5	49.7	49.0	49.8	49.4	49.3	48.5	47.9	47.8	48.1	46.4	43.5	-	2925	14	3130	↑ 39.0	35.5	38.2	29.1	
02/21	50.5	49.7	48.9	49.3	49.2	49.3	48.6	47.9	47.7	47.8	46.8	43.9	-	3062	23	3131	↓ 41.0	40.1	42.5	35.1	
02/22	50.3	49.5	48.8	49.1	48.7	48.7	48.1	47.7	47.7	47.9	46.6	43.8	-	3659	14	3129	↓ 39.0	37.8	40.6	33.5	
02/23	50.3	49.6	48.7	49.2	48.9	48.9	47.9	47.2	46.9	47.1	46.5	43.1	-	2381	15	3129	↑ 42.0	37.8	40.9	32.9	
02/24	50.3	48.9	48.5	49.2	48.9	48.9	48.0	47.3	47.2	47.0	46.4	43.4	-	2214	14	3164	↓ 40.0	38.2	40.1	35.3	
02/25	50.1	49.4	48.5	49.1	49.0	49.2	48.6	48.0	47.7	47.5	46.9	43.5	-	3133	14	3169	↑ 43.0	42.7	44.7	38.0	
02/26	50.1	49.4	48.1	49.3	49.2	49.5	49.7	49.4	49.4	49.0	46.9	43.7	-	2986	14	3170	↑ 47.5	47.0	48.7	37.3	
02/27	50.2	49.4	47.7	49.2	49.1	48.9	48.0	47.6	47.7	48.3	46.5	42.9	-	2923	14	3170	↑ 50.0	46.5	47.9	34.5	
02/28	50.1	49.3	47.7	49.1	48.8	48.8	48.5	47.9	47.8	47.6	46.4	43.1	-	3126	14	3169	↑ 41.0	42.1	44.4	34.8	
-																					
-																					
-																					
Feb	50.8	50.0	48.9	50.1	50.1	50.3	50.1	49.9	50.0	50.1	47.4	44.6	-	3267	19	3500	51.2	48.0	51.2	39.3	
														Total CFS	91477	524	97986				
														Total AF	181441	1039	194351				

Legend

- ? = 1-9 hours of data missing (Average includes estimations)
- ! = 10 or more hours of data missing (Average not calculated)
- # = Station out of service
- ↑ = Record high air temperature
- ↓ = Record low air temperature
- = Monthly Averages

Notes

- ¹ Temperatures are weighted averages based on individual penstock flow and temperature
Highlighted cells in the TCD column indicate a TCD change was made on that day
- ² Current control point (see page 3 for more details)
- ³ Column not used this month

D A T E	Redding (RDD) Daily Air Temperatures (°F)																																					
	Actual			Forecasted																																		
	Previous Day			Current Day			1 Day			2 Days			3 Days			4 Days			5 Days			6 Days			7 Days			8 Days			9 Days			10 Days				
	↓	↑	Avg	↓	↑	Avg	↓	↑	Avg	↓	↑	Avg	↓	↑	Avg	↓	↑	Avg	↓	↑	Avg	↓	↑	Avg	↓	↑	Avg	↓	↑	Avg	↓	↑	Avg	↓	↑	Avg		
02/01	37	67	52.0	50	69	59.5	45	72	58.5	47	74	60.5	47	73	60.0	45	75	60.0	45	75	60.0	47	76	61.5	49	76	62.5	47	73	60.0	47	71	59.0	46	70	58.0		
02/02	47	78	62.5	49	79	64.0	46	78	62.0	46	78	62.0	46	76	61.0	45	73	59.0	45	76	60.5	47	76	61.5	48	71	59.5	43	70	56.5	42	69	55.5	41	70	55.5		
02/03	49	78	63.5	59	79	69.0	50	77	63.5	45	73	59.0	42	73	57.5	43	75	59.0	45	74	59.5	44	72	58.0	43	67	55.0	38	69	53.5	37	66	51.5	37	68	52.5		
02/04	59	79	69.0	52	78	65.0	49	74	61.5	45	73	59.0	46	76	61.0	46	76	61.0	45	74	59.5	44	72	58.0	43	68	55.5	40	64	52.0	46	67	56.5	44	68	56.0		
02/05	52	81	66.5	50	75	62.5	43	73	58.0	44	76	60.0	46	77	61.5	45	75	60.0	44	70	57.0	45	70	57.5	39	64	51.5	36	64	50.0	38	66	52.0	40	69	54.5		
02/06	50	78	64.0	44	76	60.0	46	78	62.0	46	80	63.0	46	76	61.0	44	70	57.0	44	72	58.0	41	69	55.0	44	67	55.5	39	65	52.0	40	65	52.5	39	71	55.0		
02/07	49	74	61.5	45	76	60.5	47	79	63.0	47	77	62.0	44	70	57.0	41	69	55.0	39	70	54.5	40	70	55.0	41	68	54.5	40	70	55.0	40	70	55.0	42	72	57.0		
02/08	45	80	62.5	42	79	60.5	47	77	62.0	44	68	56.0	40	69	54.5	41	66	53.5	40	68	54.0	40	71	55.5	47	72	59.5	43	70	56.5	40	66	53.0	41	69	55.0		
02/09	40	76	58.0	42	76	59.0	43	66	54.5	39	65	52.0	39	64	51.5	40	69	54.5	39	69	54.0	41	70	55.5	43	73	58.0	43	72	57.5	42	72	57.0	44	71	57.5		
02/10	42	70	56.0	40	65	52.5	38	63	50.5	38	62	50.0	39	67	53.0	38	70	54.0	40	72	56.0	42	73	57.5	47	73	60.0	44	73	58.5	43	71	57.0	44	69	56.5		
02/11	39	64	51.5	35	61	48.0	37	62	49.5	35	69	52.0	36	67	51.5	38	69	53.5	39	73	56.0	42	72	57.0	49	70	59.5	40	70	55.0	41	67	54.0	41	70	55.5		
02/12	35	60	47.5	39	60	49.5	36	65	50.5	36	60	48.0	35	66	50.5	36	71	53.5	39	70	54.5	40	65	52.5	36	59	47.5	32	60	46.0	32	61	46.5	38	65	51.5		
02/13	37	58	47.5	44	65	54.5	35	58	46.5	34	64	49.0	37	71	54.0	41	69	55.0	39	63	51.0	37	57	47.0	38	63	50.5	32	58	45.0	29	56	42.5	33	65	49.0		
02/14	35	66	50.5	32	59	45.5	34	63	48.5	36	68	52.0	39	70	54.5	39	61	50.0	33	55	44.0	26	57	41.5	35	64	49.5	37	65	51.0	37	61	49.0	41	63	52.0		
02/15	31	60	45.5	43	64	53.5	35	69	52.0	38	70	54.0	38	59	48.5	29	55	42.0	25	56	40.5	27	59	43.0	33	63	48.0	33	63	48.0	35	62	48.5	39	60	49.5		
02/16	43	63	53.0	38	69	53.5	39	69	54.0	39	56	47.5	28	53	40.5	26	58	42.0	29	60	44.5	34	64	49.0	40	63	51.5	39	64	51.5	36	61	48.5	40	63	51.5		
02/17	35	70	52.5	39	68	53.5	39	55	47.0	28	52	40.0	25	55	40.0	28	61	44.5	33	61	47.0	35	59	47.0	42	61	51.5	36	61	48.5	40	60	50.0	40	62	51.0		
02/18	39	68	53.5	35	54	44.5	28	52	40.0	24	53	38.5	29	56	42.5	33	57	45.0	33	60	46.5	34	58	46.0	39	57	48.0	38	58	48.0	38	59	48.5	40	60	50.0		
02/19	34	58	46.0	28	52	40.0	24	52	38.0	27	53	40.0	32	53	42.5	30	58	44.0	30	56	43.0	34	57	45.5	39	55	47.0	37	55	46.0	35	55	45.0	39	61	50.0		
02/20	25	53	39.0	32	52	42.0	27	53	40.0	30	53	41.5	29	58	43.5	32	57	44.5	34	57	45.5	35	57	46.0	40	56	48.0	37	56	46.5	37	59	48.0	40	64	52.0		
02/21	28	50	39.0	29	55	42.0	32	53	42.5	28	57	42.5	33	58	45.5	35	59	47.0	35	55	45.0	32	55	43.5	36	57	46.5	34	56	45.0	36	61	48.5	41	59	50.0		
02/22	27	55	41.0	26	51	38.5	26	56	41.0	30	56	43.0	32	58	45.0	35	53	44.0	31	57	44.0	32	56	44.0	38	57	47.5	39	55	47.0	35	58	46.5	41	63	52.0		
02/23	26	52	39.0	36	55	45.5	30	56	43.0	31	58	44.5	34	55	44.5	30	60	45.0	33	56	44.5	36	54	45.0	44	57	50.5	45	64	54.5	47	65	56.0	43	63	53.0		
02/24	30	54	42.0	25	54	39.5	29	57	43.0	35	55	45.0	28	59	43.5	33	55	44.0	38	52	45.0	37	54	45.5	41	58	49.5	42	63	52.5	44	68	56.0	44	68	56.0		
02/25	25	55	40.0	28	58	43.0	35	55	45.0	30	59	44.5	34	52	43.0	38	51	44.5	35	52	43.5	34	53	43.5	34	60	47.0	46	66	56.0	42	69	55.5	45	65	55.0		
02/26	27	59	43.0	42	55	48.5	30	60	45.0	33	54	43.5	39	50	44.5	31	49	40.0	32	51	41.5	31	57	44.0	38	60	49.0	42	65	53.5	43	68	55.5	45	69	57.0		
02/27	40	55	47.5	41	61	51.0	33	54	43.5	40	51	45.5	31	48	39.5	30	51	40.5	24	57	40.5	29	61	45.0	40	63	51.5	45	66	55.5	44	64	54.0	43	66	54.5		
02/28	41	59	50.0	33	52	42.5	40	53	46.5	33	47	40.0	33	49	41.0	28	52	40.0	28	58	43.0	34	60	47.0	44	59	51.5	47	60	53.5	43	62	52.5	44	64	54.0		
-																																						
-																																						
-																																						

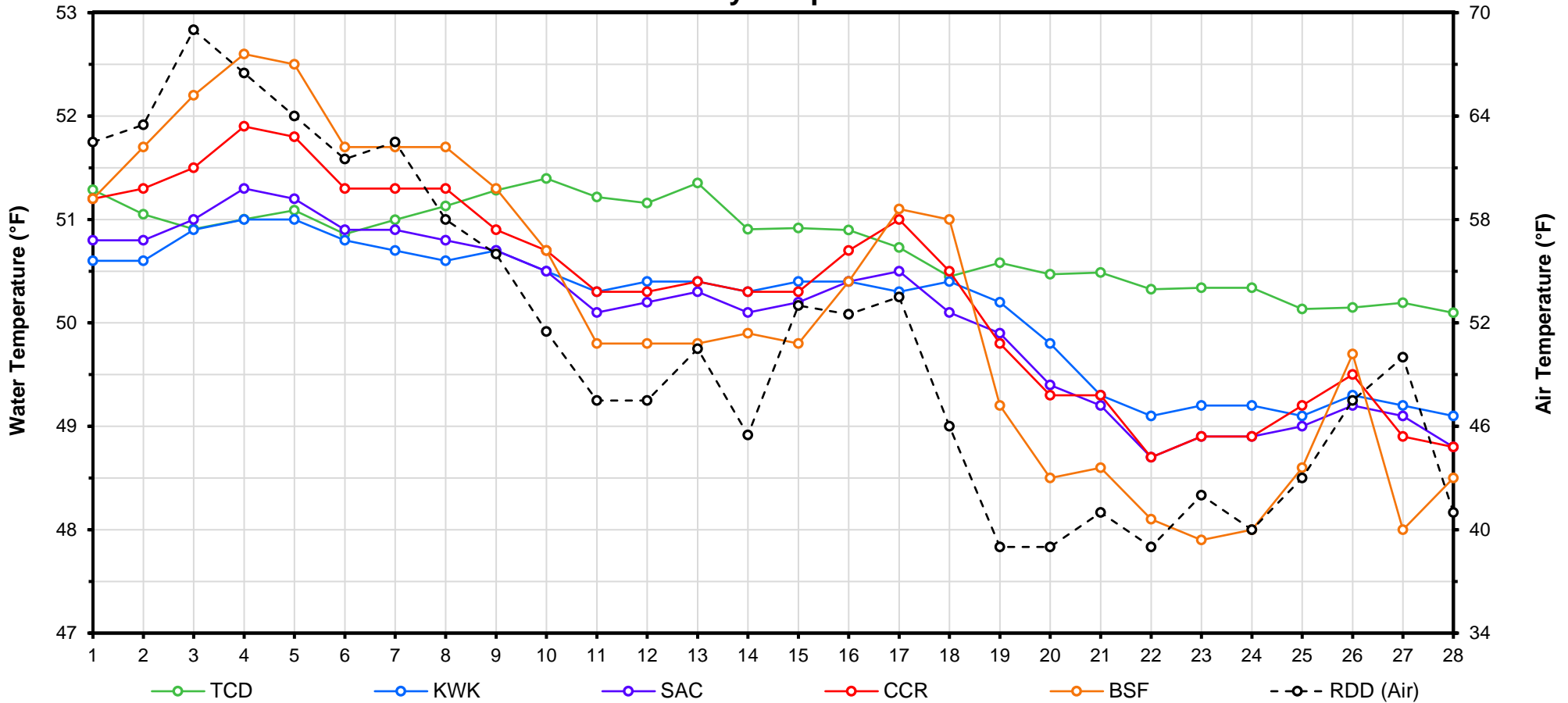
[Web Links](#)

[Legend](#)

[10-Day Min/Max Forecast](#)
[Previous Days Min/Max Actuals](#)

NR = Forecasted temperatures not recorded
100 = Previous day actual temperatures in red and bolded indicate a record temperature for that date

Mean Daily Temperatures



Station Details			
Code	Body of Water	Location ¹	CDEC Link
TCD	N/A	Shasta Power Plant	N/A
SHD	Sacramento River	0.3 miles downstream of Shasta Power Plant	Click Here
SPP	N/A	Spring Creek Power Plant	N/A
KWK	Sacramento River	0.8 miles downstream of Keswick Dam	Click Here
SAC	Sacramento River	4.8 miles downstream of Keswick Dam	Click Here
CCR	Sacramento River	9.7 miles downstream of Keswick Dam	Click Here
BSF	Sacramento River	25 miles downstream of Keswick Dam	Click Here
JLF	Sacramento River	34 miles downstream of Keswick Dam	Click Here
BND	Sacramento River	41 miles downstream of Keswick Dam	Click Here
RDB	Sacramento River	58 miles downstream of Keswick Dam	Click Here
IGO	Clear Creek	7.3 miles downstream of Whiskeytown Dam	Click Here
LWS	Trinity River	1.1 miles downstream of Lewiston Dam	Click Here
DGC ²	Trinity River	19 miles downstream of Lewiston Dam	Click Here
NFH ³	Trinity River	38 miles downstream of Lewiston Dam	Click Here

Temperature Control Point		
Point	Temp. (°F)	Date Range
BSF	56.0	06/01/17 - Current

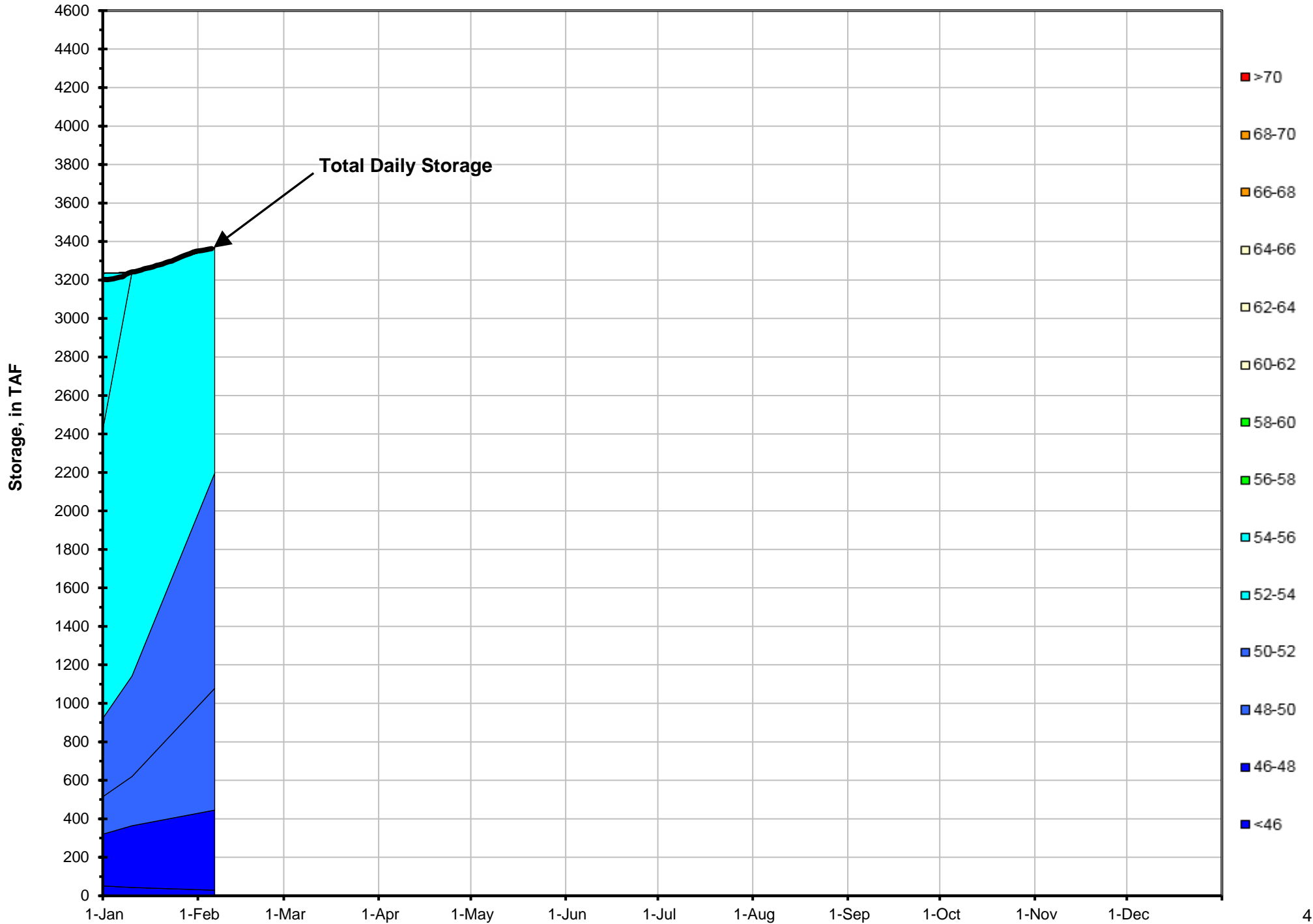
Notes

¹ Distances are approximate

² DGC is only reported in September

³ NFH is only reported in October, November and December

Lake Shasta Isothermalbaths - 2018 (Water Temperature, in °F)



DATE	Daily Max		7DADM ¹		DAT ²
	SAC	CCR	SAC	CCR	BSF
02/01	52.0	52.7	51.5	51.9	51.2
02/02	52.3	53.0	51.7	52.2	51.7
02/03	52.6	53.2	51.9	52.5	52.2
02/04	52.8	53.6	52.0	52.7	52.6
02/05	52.7	53.4	52.2	52.9	52.5
02/06	52.3	53.0	52.3	53.0	51.7
02/07	52.4	53.2	52.4	53.2	51.7
02/08	52.4	53.1	52.5	53.2	51.7
02/09	51.4	51.9	52.4	53.1	51.3
02/10	51.7	52.2	52.2	52.9	50.7
02/11	51.5	51.7	52.1	52.6	49.8
02/12	51.6	52.0	51.9	52.4	49.8
02/13	52.0	52.4	51.9	52.4	49.8
02/14	51.7	52.0	51.8	52.2	49.9
02/15	51.8	52.1	51.7	52.0	49.8
02/16	52.0	52.6	51.8	52.1	50.4
02/17	52.1	52.9	51.8	52.2	51.1
02/18	51.5	52.1	51.8	52.3	51.0
02/19	51.4	51.8	51.8	52.3	49.2
02/20	50.6	50.7	51.6	52.0	48.5
02/21	50.7	51.0	51.4	51.9	48.6
02/22	49.9	50.0	51.2	51.6	48.1
02/23	50.6	50.9	51.0	51.3	47.9
02/24	50.1	50.4	50.7	51.0	48.0
02/25	50.5	51.1	50.5	50.8	48.6
02/26	50.5	51.0	50.4	50.7	49.7
02/27	50.6	50.9	50.4	50.8	48.0
02/28	49.5	49.5	50.2	50.5	48.5
-					
-					
-					

Notes

¹ 7DADM = 7-Day Average
Daily Maximum

² DAT = Daily Average
Temperature

