

Northern CVP Water Temperature Report

February - 2017

Page	Description
1	- Mean Daily Water Temperature, Release Flow Rates and Air Temperatures with Monthly Averages
2	- Redding 10-Day Forecasted Air Temperatures
3	- Sacramento River Mean Daily Water Temperature, Air Temperature and 10-Day Forecasted Air Temperature Plot - Water Temperature Measuring Station Details - Temperature Control Point Details
4	- Lake Shasta Isothermalbaths Plot
5	- Daily Maximum and 7DADM
x	- TCD Configuration (External Link)



All Data in this Report is Preliminary and Subject to Change

DATE	Mean Daily Water Temperatures (°F)													Mean Daily Release (CFS)			Mean Daily Air Temperatures (°F)				
	TCD ¹	SHD	SPP ¹	KWK	SAC	CCR	BSF ²	JLF	BND	RDB	IGO	LWS	----- ³	Shasta Generation	Spring Creek P.P.	Keswick Total	RDD	BSF	RDB	LWS	
Jan	48.8	48.3	46.2	48.2	47.9	48.4	47.4	47.1	47.2	47.2	45.9	42.5	-	14270	1205	20671	45.6	43.6	44.9	35.6	
02/01	47.6	47.1	45.5	47.1	47.0	47.3	47.2	47.2	47.2	47.2	46.0	43.5	-	18164	2665	21870	46.5	44.1	45.7	41.3	
02/02	47.5	46.9	45.5	47.0	46.9	47.2	47.2	47.2	47.4	47.4	46.4	43.8	-	18257	3047	21947	47.0	46.6	47.1	43.6	
02/03	47.1	46.6	45.6	47.0	47.1	47.4	47.9	48.1	48.2	48.6	48.0	44.1	-	18708	2256	22318	54.0	55.8	55.6	45.2	
02/04	46.9	46.3	45.7	46.9	47.0	47.1	48.1	48.4	48.7	49.1	48.9	44.4	-	18806	2033	22445	54.5	55.0	54.9	44.9	
02/05	46.9	46.4	45.7	46.8	46.9	47.1	47.8	48.0	48.2	48.7	48.9	44.5	-	18609	1680	22619	53.5	53.5	53.3	44.7	
02/06	46.8	47.5	45.8	46.9	47.4	47.2	48.4	48.6	48.8	49.3	50.0	44.7	-	18763	1487	27729	54.0	55.0	55.0	45.3	
02/07	46.8	46.9	45.9	47.4	48.2	47.8	49.8	49.9	50.0	50.0	50.6	44.9	-	18323	2028	25848	57.5	57.7	57.5	45.1	
02/08	47.0	46.5	45.8	47.0	47.5	47.4	49.1	49.4	49.7	50.5	50.2	44.6	-	17804	2004	21361	56.0	57.3	57.8	42.9	
02/09	46.8	46.4	46.0	47.5	48.4	48.3	50.3	50.6	50.7	51.0	51.5	45.0	-	15665	1108	17284	58.5	59.3	59.1	50.5	
02/10	47.2	48.1	46.2	47.6	47.8	47.9	49.4	49.6	50.1	50.5	50.1	45.3	-	15331	2697	38612	54.5	53.5	54.3	43.5	
02/11	47.7	47.4	46.5	47.4	47.3	47.7	48.1	48.2	48.5	48.6	48.0	44.8	-	17378	3004	49030	53.0	51.0	51.9	40.8	
02/12	47.9	47.2	46.9	47.4	47.3	47.9	47.7	47.6	47.9	47.9	47.7	44.6	-	17716	2117	59280	59.0	48.8	52.8	39.6	
02/13	47.9	47.0	46.7	47.1	47.0	47.9	47.5	47.6	47.8	47.8	48.0	45.0	-	18573	1928	67438	50.5	48.0	49.3	42.9	
02/14	47.9	46.8	46.6	46.8	46.7	47.3	47.1	47.2	47.4	47.4	47.6	44.9	-	18464	2495	73966	51.5	48.7	51.3	45.0	
02/15	47.8	46.9	46.8	46.9	46.8	47.1	47.2	47.3	47.4	47.5	48.1	45.4	-	18653	1143	65398	52.5	50.6	52.6	48.6	
02/16	47.6	47.0	46.7	47.2	47.2	47.5	48.0	48.3	48.5	48.6	49.0	45.9	-	18669	1315	46123	57.0	56.3	56.6	47.6	
02/17	47.7	47.0	46.8	47.1	47.1	47.4	47.7	47.9	48.2	48.3	48.1	45.6	-	19050	1250	53728	49.5	48.3	49.1	42.9	
02/18	47.7	47.3	47.7	47.4	47.5	47.7	48.6	49.0	49.1	48.9	49.4	46.0	-	19430	14	45624	53.0	51.2	53.4	44.8	
02/19	47.4	47.1	46.9	47.1	47.0	47.4	47.9	48.2	48.6	48.8	48.3	45.8	-	18887	1130	45427	50.0	49.9	49.1	41.3	
02/20	47.2	46.7	46.8	47.3	47.6	47.7	48.4	48.5	48.6	48.5	49.2	46.2	-	18688	2702	26418	53.0	53.6	53.2	46.5	
02/21	47.3	46.8	47.0	47.1	47.4	47.6	48.6	49.0	49.3	49.4	49.0	46.4	-	18948	2415	29828	50.5	52.3	53.2	45.2	
02/22	47.5	47.0	47.3	47.1	47.0	47.3	47.5	47.7	48.0	48.2	48.0	45.8	-	19369	2484	57422	45.0	44.5	44.7	37.7	
02/23	47.7	47.0	47.5	47.1	47.0	47.2	47.2	47.1	47.3	47.2	47.0	45.1	-	19679	2156	66552	42.5	41.3	43.0	34.0	
02/24	47.9	47.1	47.6	47.2	47.1	47.3	47.2	47.1	47.3	47.2	46.2	45.2	-	19804	2104	68035	↓	40.5	39.9	42.2	34.4
02/25	47.9	47.2	47.7	47.3	47.2	47.5	47.5	47.4	47.6	47.5	46.5	45.7	-	19768	2096	68631	45.5	43.6	45.6	36.5	
02/26	47.9	47.2	47.5	47.3	47.2	47.4	47.4	47.3	47.5	47.4	45.8	45.4	-	19346	3615	68906	42.0	41.0	43.3	35.0	
02/27	47.9	47.2	47.5	47.3	47.2	47.4	47.4	47.3	47.4	47.4	45.6	45.0	-	19604	3767	68287	41.5	41.7	44.7	36.1	
02/28	47.9	47.2	47.3	47.3	47.2	47.4	47.5	47.4	47.5	47.5	45.7	45.1	-	19393	3505	68444	44.0	42.9	45.2	38.7	
-																					
-																					
-																					
Feb	47.5	47.0	46.6	47.2	47.3	47.5	48.0	48.1	48.3	48.4	48.1	45.1	-	18566	2152	45378	50.6	49.7	50.8	42.3	

Total CFS	519849	60245	1270570
Total AF	1031099	119493	2520124

Legend

Notes

- ? = 1-9 hours of data missing (Average includes estimations)
- ! = 10 or more hours of data missing (Average not calculated)
- # = Station out of service
- ↑ = Record high air temperature
- ↓ = Record low air temperature
- ☐ = Monthly Averages

- ¹ Temperatures are weighted averages based on individual penstock flow and temperature
- Highlighted cells in the TCD column indicate a TCD change was made on that day
- ² Current control point (see page 3 for more details)
- ³ Column not used this month

D A T E	Redding (RDD) Daily Air Temperatures (°F)																																				
	Actual			Forecasted																																	
	Previous Day			Current Day			1 Day			2 Days			3 Days			4 Days			5 Days			6 Days			7 Days			8 Days			9 Days			10 Days			
	↓	↑	Avg	↓	↑	Avg	↓	↑	Avg	↓	↑	Avg	↓	↑	Avg	↓	↑	Avg	↓	↑	Avg	↓	↑	Avg	↓	↑	Avg	↓	↑	Avg	↓	↑	Avg	↓	↑	Avg	
02/01	35	53	44.0	38	57	47.5	40	51	45.5	46	56	51.0	43	55	49.0	41	57	49.0	41	54	47.5	43	57	50.0	49	64	56.5	48	66	57.0	49	64	56.5	45	66	55.5	
02/02	37	56	46.5	45	51	48.0	44	58	51.0	45	55	50.0	43	55	49.0	45	54	49.5	44	58	51.0	45	59	52.0	49	63	56.0	48	65	56.5	44	68	56.0	46	68	57.0	
02/03	44	50	47.0	50	57	53.5	47	55	51.0	43	56	49.5	42	54	48.0	39	55	47.0	42	57	49.5	47	58	52.5	49	62	55.5	46	66	56.0	44	68	56.0	45	65	55.0	
02/04	50	58	54.0	54	56	55.0	45	57	51.0	43	54	48.5	41	52	46.5	42	57	49.5	48	57	52.5	43	56	49.5	43	62	52.5	46	67	56.5	44	68	56.0	43	70	56.5	
02/05	53	56	54.5	50	57	53.5	46	54	50.0	42	54	48.0	47	58	52.5	51	58	54.5	42	56	49.0	39	58	48.5	44	65	54.5	42	68	55.0	43	70	56.5	46	66	56.0	
02/06	50	57	53.5	53	54	53.5	45	60	52.5	49	57	53.0	54	60	57.0	45	57	51.0	39	62	50.5	39	62	50.5	42	68	55.0	44	69	56.5	43	68	55.5	46	64	55.0	
02/07	49	59	54.0	51	59	55.0	51	59	55.0	55	61	58.0	45	55	50.0	37	59	48.0	39	66	52.5	41	66	53.5	42	67	54.5	44	66	55.0	45	60	52.5	42	64	53.0	
02/08	51	64	57.5	52	61	56.5	56	60	58.0	46	55	50.5	38	61	49.5	38	66	52.0	40	68	54.0	41	64	52.5	43	67	55.0	44	61	52.5	47	64	55.5	46	66	56.0	
02/09	51	61	56.0	56	61	58.5	45	57	51.0	38	61	49.5	39	68	53.5	39	67	53.0	41	67	54.0	42	61	51.5	49	59	54.0	45	63	54.0	44	60	52.0	43	65	54.0	
02/10	56	61	58.5	51	57	54.0	37	61	49.0	38	66	52.0	42	65	53.5	41	70	55.5	46	61	53.5	47	56	51.5	41	60	50.5	40	56	48.0	41	59	50.0	42	62	52.0	
02/11	48	61	54.5	44	61	52.5	41	67	54.0	41	65	53.0	46	67	56.5	46	60	53.0	48	56	52.0	46	57	51.5	44	60	52.0	44	55	49.5	46	58	52.0	44	65	54.5	
02/12	44	62	53.0	48	66	57.0	40	66	53.0	43	68	55.5	46	60	53.0	49	55	52.0	44	57	50.5	43	56	49.5	44	56	50.0	44	56	50.0	44	61	52.5	42	66	54.0	
02/13	48	70	59.0	43	67	55.0	40	67	53.5	46	58	52.0	49	56	52.5	45	57	51.0	44	57	50.5	44	54	49.0	44	57	50.5	44	57	50.5	43	60	51.5	43	66	54.5	
02/14	41	60	50.5	35	67	51.0	45	58	51.5	49	57	53.0	46	55	50.5	44	58	51.0	44	52	48.0	43	54	48.5	47	55	51.0	41	59	50.0	42	65	53.5	44	67	55.5	
02/15	34	69	51.5	48	58	53.0	49	58	53.5	46	56	51.0	44	59	51.5	43	56	49.5	46	54	50.0	44	54	49.0	39	59	49.0	39	62	50.5	37	62	49.5	41	63	52.0	
02/16	48	57	52.5	48	58	53.0	45	55	50.0	43	59	51.0	42	54	48.0	47	57	52.0	49	56	52.5	41	56	48.5	39	58	48.5	36	61	48.5	37	64	50.5	40	69	54.5	
02/17	50	64	57.0	48	55	51.5	45	57	51.0	43	53	48.0	47	57	52.0	45	56	50.5	40	56	48.0	34	54	44.0	31	54	42.5	38	59	48.5	38	63	50.5	41	67	54.0	
02/18	48	51	49.5	NR	58	-	43	53	48.0	46	57	51.5	47	56	51.5	40	56	48.0	34	54	44.0	33	54	43.5	41	54	47.5	39	56	47.5	38	60	49.0	40	63	51.5	
02/19	46	60	53.0	47	NR	-	NR	NR	-	NR	NR	-	NR	NR	-	NR	NR	-	NR	NR	-	NR	NR	-	NR	NR	-	NR	NR	-	NR	NR	-	NR	NR	-	
02/20	47	53	50.0	50	56	53.0	48	56	52.0	39	53	46.0	33	54	43.5	31	54	42.5	37	56	46.5	35	55	45.0	31	57	44.0	40	59	49.5	44	64	54.0	42	69	55.5	
02/21	50	56	53.0	50	55	52.5	39	52	45.5	33	53	43.0	30	54	42.0	37	55	46.0	38	54	46.0	38	55	46.5	41	58	49.5	43	63	53.0	43	68	55.5	44	71	57.5	
02/22	42	59	50.5	38	52	45.0	32	53	42.5	30	53	41.5	34	55	44.5	35	51	43.0	36	53	44.5	36	56	46.0	36	61	48.5	43	69	56.0	44	71	57.5	46	70	58.0	
02/23	36	54	45.0	32	53	42.5	30	52	41.0	34	53	43.5	30	52	41.0	35	55	45.0	34	57	45.5	38	61	49.5	40	67	53.5	44	71	57.5	45	71	58.0	45	72	58.5	
02/24	31	54	42.5	29	52	40.5	33	53	43.0	31	53	42.0	33	54	43.5	33	58	45.5	36	63	49.5	39	68	53.5	42	69	55.5	46	73	59.5	50	73	61.5	48	74	61.0	
02/25	29	52	40.5	37	54	45.5	30	54	42.0	32	54	43.0	33	59	46.0	33	63	48.0	36	67	51.5	40	70	55.0	46	69	57.5	48	74	61.0	48	74	61.0	48	72	60.0	
02/26	36	55	45.5	30	54	42.0	31	53	42.0	31	57	44.0	34	65	49.5	36	64	50.0	38	64	51.0	43	62	52.5	47	61	54.0	45	68	56.5	49	71	60.0	47	73	60.0	
02/27	30	54	42.0	31	53	42.0	32	58	45.0	34	63	48.5	37	64	50.5	37	63	50.0	42	60	51.0	43	59	51.0	44	63	53.5	45	74	59.5	51	73	62.0	47	73	60.0	
02/28	30	53	41.5	30	57	43.5	33	64	48.5	34	64	49.0	38	62	50.0	43	59	51.0	45	58	51.5	39	59	49.0	50	59	54.5	48	62	55.0	50	64	57.0	45	59	52.0	
-																																					
-																																					
-																																					

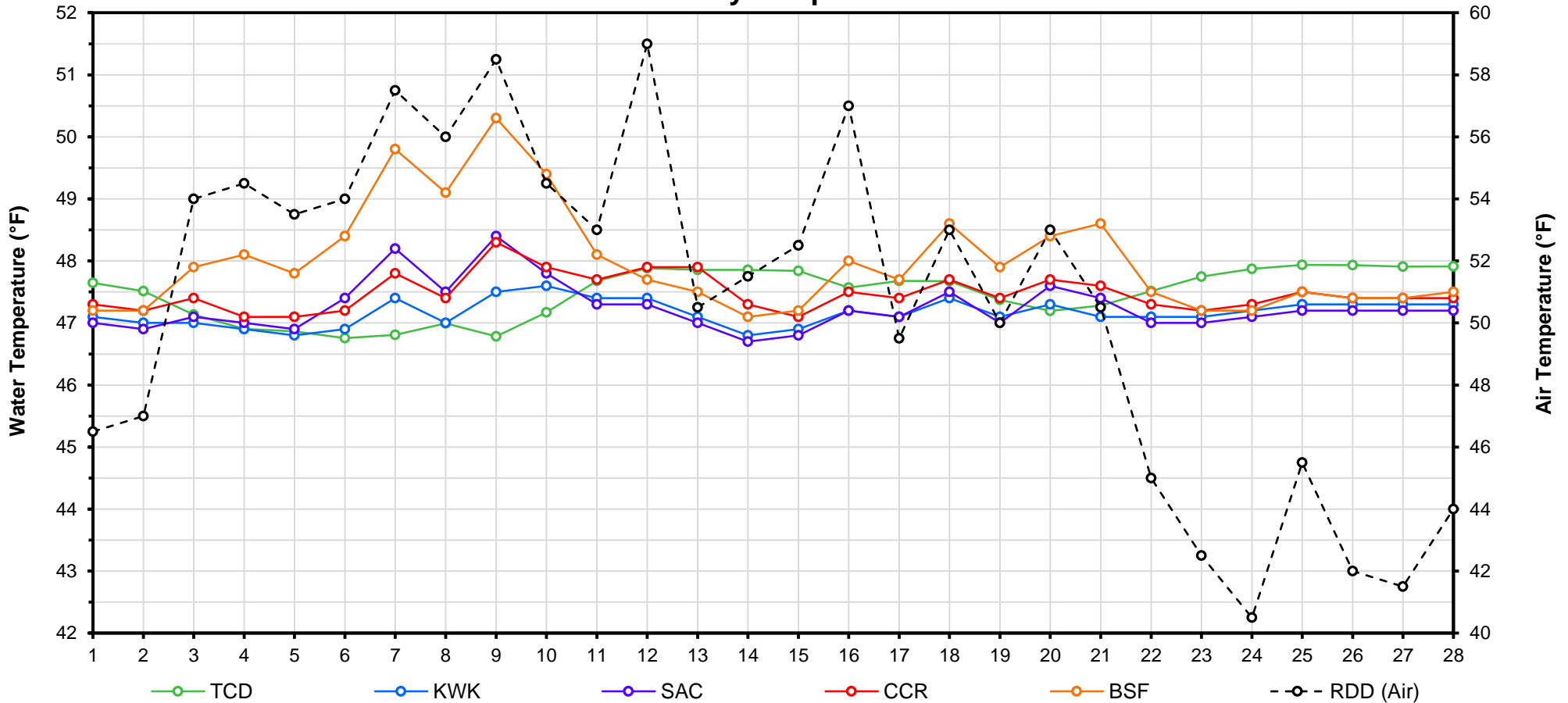
[Web Links](#)

[Legend](#)

[10-Day Min/Max Forecast](#)
[Previous Days Min/Max Actuals](#)

NR = Forecasted temperatures not recorded
100 = Previous day actual temperatures in red and bolded indicate a record temperature for that date

Mean Daily Temperatures



Station Details			
Code	Body of Water	Location ¹	CDEC Link
TCD	N/A	Shasta Power Plant	N/A
SHD	Sacramento River	0.3 miles downstream of Shasta Power Plant	Click Here
SPP	N/A	Spring Creek Power Plant	N/A
KWK	Sacramento River	0.8 miles downstream of Keswick Dam	Click Here
SAC	Sacramento River	4.8 miles downstream of Keswick Dam	Click Here
CCR	Sacramento River	9.7 miles downstream of Keswick Dam	Click Here
BSF	Sacramento River	25 miles downstream of Keswick Dam	Click Here
JLF	Sacramento River	34 miles downstream of Keswick Dam	Click Here
BND	Sacramento River	41 miles downstream of Keswick Dam	Click Here
RDB	Sacramento River	58 miles downstream of Keswick Dam	Click Here
IGO	Clear Creek	7.3 miles downstream of Whiskeytown Dam	Click Here
LWS	Trinity River	1.1 miles downstream of Lewiston Dam	Click Here
DGC ²	Trinity River	19 miles downstream of Lewiston Dam	Click Here
NFH ³	Trinity River	38 miles downstream of Lewiston Dam	Click Here

Temperature Control Point		
Point	Temp. (°F)	Date Range
BSF	56.0	06/17/16 - Current

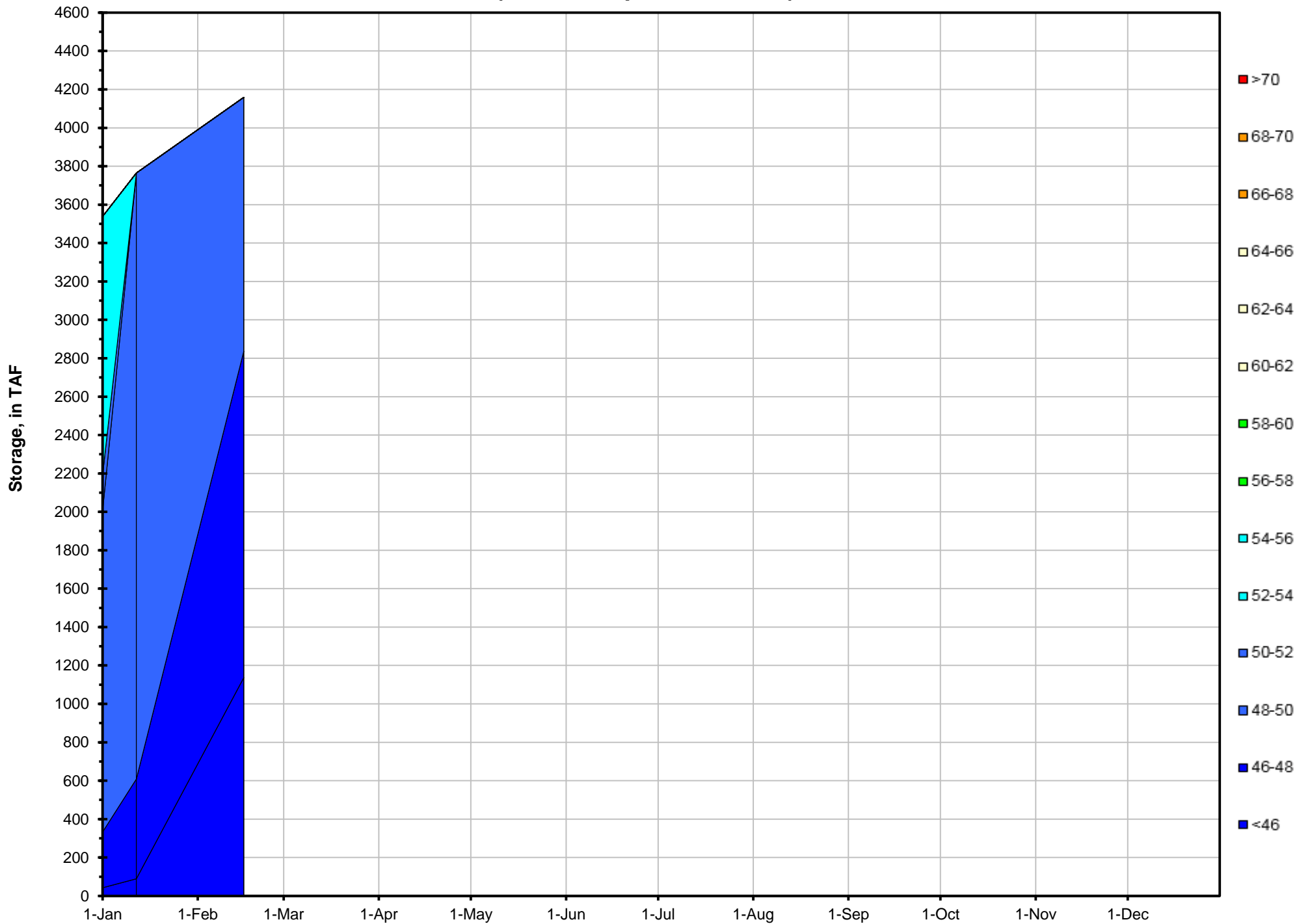
Notes

¹ Distances are approximate

² DGC is only reported in September

³ NFH is only reported in October, November and December

Lake Shasta Isothermalbaths - 2017 (Water Temperature, in °F)



DATE	Daily Max		7DADM ¹		DAT ²
	SAC	CCR	SAC	CCR	BSF
02/01	47.1	47.6	47.6	48.0	47.2
02/02	46.9	47.4	47.4	47.8	47.2
02/03	47.5	47.7	47.4	47.8	47.9
02/04	47.3	47.3	47.3	47.6	48.1
02/05	47.0	47.2	47.2	47.5	47.8
02/06	48.4	47.5	47.3	47.5	48.4
02/07	48.6	48.4	47.5	47.6	49.8
02/08	48.3	47.8	47.7	47.6	49.1
02/09	49.0	49.4	48.0	47.9	50.3
02/10	48.5	48.3	48.2	48.0	49.4
02/11	48.0	48.4	48.3	48.1	48.1
02/12	47.5	48.3	48.3	48.3	47.7
02/13	47.2	48.3	48.2	48.4	47.5
02/14	47.1	47.8	48.4	48.3	47.1
02/15	47.0	47.4	48.2	48.3	47.2
02/16	47.4	47.8	47.5	48.0	48.0
02/17	47.1	47.5	47.3	47.9	47.7
02/18	47.7	48.0	47.3	47.9	48.6
02/19	47.2	47.6	47.2	47.8	47.9
02/20	47.9	47.9	47.3	47.7	48.4
02/21	47.7	47.9	47.4	47.7	48.6
02/22	47.2	47.4	47.5	47.7	47.5
02/23	47.4	47.6	47.5	47.7	47.2
02/24	47.4	47.7	47.5	47.7	47.2
02/25	47.5	47.8	47.5	47.7	47.5
02/26	47.5	47.7	47.5	47.7	47.4
02/27	47.5	47.8	47.5	47.7	47.4
02/28	47.6	47.8	47.4	47.7	47.5
-					
-					
-					

Notes

¹ 7DADM = 7-Day Average
Daily Maximum

² DAT = Daily Average
Temperature

