

# Northern CVP Water Temperature Report

## January - 2022

| Page | Description   |
|------|---|
| 2    | - Mean Daily Water Temperature, Release Flow Rates and Air Temperatures with Monthly Averages   |
| 3    | - Redding 10-Day Forecasted Air Temperatures  |
| 4    | - Sacramento River Mean Daily Water Temperature, Air Temperature and 10-Day Forecasted Air Temperature Plot<br>- Water Temperature Measuring Station Details<br>- Temperature Control Point Details |
| 5    | - Shasta Lake Isothermobaths & Cold Water Pool Statistics   |
| 14   | - Trinity Lake Isothermobaths & Cold Water Pool Statistics  |
| 23   | - Whiskeytown Lake Isothermobaths & Cold Water Pool Statistics  |
| x    | - <a href="#">TCD Configuration</a> (External Link)   |



— BUREAU OF —  
RECLAMATION

All Data in this Report is Preliminary and Subject to Change

| DATE  | Mean Daily Water Temperatures (°F) |        |                  |        |                  |      |      |        |        |      |        |        |      |        | Mean Daily Release (CFS) |                   |               | Mean Daily Air Temperatures (°F) |      |      |      |
|-------|------------------------------------|--------|------------------|--------|------------------|------|------|--------|--------|------|--------|--------|------|--------|--------------------------|-------------------|---------------|----------------------------------|------|------|------|
|       | TCD <sup>1</sup>                   | SHD    | SPP <sup>1</sup> | KWK    | SAC <sup>2</sup> | CCR  | BSF  | JLF    | BND    | RDB  | IGO    | LWS    | DGC  | NFH    | Shasta Generation        | Spring Creek P.P. | Keswick Total | RDD                              | BSF  | RDB  |      |
| Dec   | 53.0                               | 52.5   | -                | 52.1   | 51.7             | 51.5 | 50.1 | 49.5   | 49.7   | 49.2 | 49.4   | 48.4   | 44.4 | 44.5   | 2696                     | 235               | 3295          | 45.5                             | 43.6 | 44.9 |      |
| 01/01 | 50.6                               | ? 49.8 | # -              | 49.7   | 49.3             | 48.8 | 47.0 | 46.0   | 46.1   | 45.8 | 45.6   | 45.0   | 40.7 | 41.1   | 2932                     | 142               | 3291          | 43.0                             | 36.9 | 39.4 |      |
| 01/02 | 50.4                               | ? 49.6 | # -              | 49.5   | 49.1             | 48.4 | 46.6 | 45.6   | 45.7   | 45.2 | 45.4   | 44.8   | 40.4 | ? 40.3 | 2757                     | 99                | 3306          | 38.0                             | 34.2 | 36.5 |      |
| 01/03 | 49.8                               | 49.4   | # -              | 49.2   | 48.8             | 48.7 | 47.4 | 46.4   | 46.4   | 45.5 | 46.1   | 44.7   | 40.3 | 40.8   | 3010                     | 126               | 3303          | 45.5                             | 44.9 | 44.5 |      |
| 01/04 | 49.6                               | 49.1   | # -              | 49.2   | 49.0             | 49.1 | 48.0 | 47.9   | 48.1   | 47.7 | 48.1   | 45.1   | 42.2 | 42.3   | 1695                     | 807               | 3306          | 52.0                             | 51.2 | 52.1 |      |
| 01/05 | 49.9                               | 49.2   | # -              | 49.2   | 49.3             | 49.5 | 49.3 | 49.1   | 49.3   | 48.9 | 48.7   | 45.2   | 43.8 | 44.4   | 2790                     | 107               | 3310          | 53.5                             | 51.6 | 51.8 |      |
| 01/06 | 49.8                               | 49.1   | # -              | 49.2   | 49.3             | 49.2 | 49.4 | ? 49.2 | 49.6   | 49.5 | 48.1   | 45.1   | 44.4 | ? 45.4 | 2708                     | 97                | 3269          | 45.0                             | 45.9 | 47.0 |      |
| 01/07 | 49.4                               | 49.0   | # -              | 49.3   | 49.3             | 49.3 | 49.7 | 49.5   | 49.6   | 49.3 | ? 48.2 | ? 45.1 | 44.0 | 45.1   | 2032                     | 395               | 3308          | 48.5                             | 48.6 | 49.2 |      |
| 01/08 | 49.4                               | 48.9   | # -              | 49.3   | 49.2             | 49.1 | 49.2 | 49.0   | 49.3   | 49.4 | 46.8   | 44.8   | 42.5 | 43.8   | 2713                     | 188               | 3300          | 50.0                             | 45.8 | 47.3 |      |
| 01/09 | 49.2                               | 48.9   | # -              | 49.1   | 49.0             | 48.8 | 48.1 | 47.5   | 47.7   | 48.0 | 46.3   | 44.8   | 41.9 | 42.9   | 2263                     | 195               | 3311          | 47.5                             | 41.6 | 44.7 |      |
| 01/10 | 49.3                               | ? 48.8 | # -              | 48.9   | 48.9             | 49.0 | 48.4 | 47.8   | 47.8   | 47.5 | 47.1   | 45.1   | 41.9 | 43.1   | 2634                     | 101               | 3280          | 52.5                             | 46.9 | 49.3 |      |
| 01/11 | 49.4                               | ? 48.8 | # -              | 48.8   | 48.8             | 48.8 | 48.6 | 48.2   | 48.3   | 48.1 | 47.4   | 45.3   | 42.4 | 43.3   | 2937                     | 111               | 3258          | 53.0                             | 46.0 | 49.1 |      |
| 01/12 | 49.3                               | ? 48.5 | # -              | 48.7   | 48.7             | 48.5 | 48.1 | 47.8   | 47.9   | 47.8 | 46.8   | 45.2   | 42.4 | 43.1   | 3646                     | 224               | 3258          | 46.5                             | 42.0 | 44.8 |      |
| 01/13 | 48.9                               | 48.4   | # -              | 48.8   | 48.8             | 48.7 | 48.2 | 47.8   | 47.8   | 47.7 | 46.7   | 45.4   | 42.1 | 43.0   | 3044                     | 310               | 3239          | 49.5                             | 44.9 | 48.2 |      |
| 01/14 | 49.4                               | 48.8   | # -              | 48.7   | 48.8             | 48.9 | 48.7 | 48.3   | 48.4   | 48.1 | 47.2   | 45.5   | 42.5 | 43.2   | 2769                     | 122               | 3267          | 59.0                             | 51.8 | 55.3 |      |
| 01/15 | 49.1                               | 48.8   | # -              | 48.6   | 48.7             | 48.7 | 48.6 | 48.2   | 48.3   | 48.3 | 46.7   | 45.4   | 41.6 | 42.4   | 2833                     | 372               | 3257          | 54.5                             | 45.6 | 48.9 |      |
| 01/16 | 48.9                               | 48.3   | # -              | 48.4   | 48.4             | 48.3 | 48.0 | 47.6   | 47.7   | 47.8 | 46.1   | 45.5   | 41.2 | 41.7   | 2948                     | 253               | 3241          | 46.0                             | 41.0 | 44.5 |      |
| 01/17 | 48.7                               | 47.9   | # -              | 48.5   | 48.5             | 48.3 | 47.7 | 47.2   | 47.3   | 47.3 | 46.0   | 45.5   | 41.5 | 41.8   | 2399                     | 77                | 3256          | 47.0                             | 41.9 | 45.8 |      |
| 01/18 | 48.2                               | 47.8   | # -              | 48.5   | 48.5             | 48.4 | 48.0 | 47.4   | 47.4   | 47.1 | 46.3   | 45.6   | 41.7 | 42.0   | 3280                     | 36                | 3280          | 48.0                             | 43.0 | 45.2 |      |
| 01/19 | 48.4                               | ? 47.7 | # -              | 48.3   | 48.5             | 48.6 | 48.3 | 47.9   | 47.9   | 47.6 | 46.9   | 45.7   | 42.3 | 42.7   | 3290                     | 0                 | 3290          | 53.0                             | 49.2 | 52.1 |      |
| 01/20 | 48.5                               | ? 47.7 | # -              | 48.1   | 48.3             | 48.6 | 48.9 | 48.8   | 48.8   | 48.6 | 47.4   | 45.7   | 42.9 | 43.3   | 3343                     | 0                 | 3328          | 53.5                             | 47.8 | 51.3 |      |
| 01/21 | 48.2                               | ? 47.5 | # -              | 48.0   | 48.1             | 48.1 | 48.5 | 48.5   | ? 48.6 | 48.8 | 46.7   | 45.8   | 43.3 | 43.8   | 3042                     | 5                 | 3336          | 54.0                             | 54.0 | 55.9 |      |
| 01/22 | 48.1                               | ? 47.5 | # -              | ? 47.9 | 48.1             | 48.2 | 48.5 | 48.4   | ? 48.4 | 48.5 | 46.8   | 45.6   | 42.1 | 43.1   | 3161                     | 14                | 3334          | 63.0                             | 59.7 | 58.0 |      |
| 01/23 | 48.4                               | 47.7   | # -              | ? 47.8 | 48.1             | 48.3 | 48.7 | 48.5   | !      | -    | 48.6   | 47.0   | 45.6 | 41.9   | 42.9                     | 3229              | 14            | 3332                             | 56.0 | 49.2 | 53.0 |
| 01/24 | 48.0                               | 47.3   | # -              | ? 47.7 | 47.8             | 47.8 | 48.1 | 48.1   | !      | -    | 48.5   | 46.3   | 45.6 | 41.8   | 42.3                     | 2864              | 133           | 3326                             | 48.0 | 43.3 | 46.5 |
| 01/25 | 48.1                               | 47.4   | # -              | ? 47.8 | 47.9             | 47.8 | 47.7 | 47.6   | !      | -    | 47.8   | 46.2   | 45.7 | 42.0   | 42.2                     | 2885              | 14            | 3324                             | 51.5 | 48.8 | 50.7 |
| 01/26 | 47.8                               | 47.4   | # -              | 47.7   | 47.8             | 47.7 | 47.4 | ? 47.4 | 47.1   | 47.5 | 45.8   | 45.4   | 40.8 | 41.3   | 3130                     | 27                | 3323          | 49.0                             | 43.0 | 47.5 |      |
| 01/27 | 48.2                               | 47.5   | # -              | 47.5   | 47.6             | 47.6 | 47.3 | 47.2   | 46.9   | 47.3 | 46.1   | 45.4   | 40.3 | 40.6   | 3264                     | 62                | 3311          | 51.5                             | 45.0 | 50.5 |      |
| 01/28 | 48.2                               | 47.5   | # -              | 47.5   | 47.5             | 47.5 | 47.2 | 47.2   | 46.9   | 47.1 | 45.9   | 45.3   | 40.5 | 40.5   | 2724                     | 15                | 3284          | 51.0                             | 44.6 | 47.3 |      |
| 01/29 | 47.6                               | 47.1   | # -              | 47.4   | 47.5             | 47.5 | 47.2 | 47.2   | 46.9   | 47.1 | 45.8   | 45.3   | 40.5 | 40.7   | 2900                     | 43                | 3281          | 49.5                             | 43.6 | 47.1 |      |
| 01/30 | 47.4                               | 46.8   | # -              | 47.4   | 47.5             | 47.5 | 47.2 | 47.2   | 47.0   | 47.2 | 46.0   | 45.5   | 41.0 | 41.0   | 2998                     | 37                | 3293          | 46.5                             | 42.7 | 46.0 |      |
| 01/31 | 47.3                               | 46.7   | # -              | 47.4   | 47.6             | 47.5 | 47.4 | 47.5   | 47.2   | 47.5 | 46.0   | 45.5   | 42.2 | 42.5   | 3324                     | 140               | 3307          | 49.0                             | 46.1 | 49.1 |      |
| Jan   | 48.8                               | 48.2   | -                | 48.4   | 48.5             | 48.4 | 48.1 | 47.8   | 47.8   | 47.8 | 46.7   | 45.3   | 41.9 | 42.5   | 2889                     | 138               | 3294          | 50.1                             | 45.8 | 48.3 |      |

|           |        |      |        |
|-----------|--------|------|--------|
| Total CFS | 89544  | 4266 | 102109 |
| Total AF  | 177607 | 8461 | 202529 |

Legend

- ? = 1-9 hours of data missing (Average includes estimations)
- ! = 10 or more hours of data missing (Average not calculated)
- # = Station out of service
- ↑ = Record high air temperature
- ↓ = Record low air temperature
- = Monthly Averages

Notes

- <sup>1</sup> Temperatures are weighted averages based on individual penstock flow and temperature
- Highlighted cells in the TCD column indicate a TCD change was made on that day
- <sup>2</sup> Current Sacramento River control point (see page 4 for more details)

| D<br>A<br>T<br>E | Redding (RDD) Daily Air Temperatures (°F) |    |      |             |    |      |       |    |      |        |    |      |        |    |      |        |    |      |        |    |      |        |    |      |        |    |      |        |    |      |        |    |      |         |    |      |
|------------------|---|----|------|-------------|----|------|-------|----|------|--------|----|------|--------|----|------|--------|----|------|--------|----|------|--------|----|------|--------|----|------|--------|----|------|--------|----|------|---------|----|------|
|                  | Actual                                    |    |      | Forecasted  |    |      |       |    |      |        |    |      |        |    |      |        |    |      |        |    |      |        |    |      |        |    |      |        |    |      |        |    |      |         |    |      |
|                  | Previous Day                              |    |      | Current Day |    |      | 1 Day |    |      | 2 Days |    |      | 3 Days |    |      | 4 Days |    |      | 5 Days |    |      | 6 Days |    |      | 7 Days |    |      | 8 Days |    |      | 9 Days |    |      | 10 Days |    |      |
|                  | ↓   | ↑  | Avg  | ↓           | ↑  | Avg  | ↓     | ↑  | Avg  | ↓      | ↑  | Avg  | ↓      | ↑  | Avg  | ↓      | ↑  | Avg  | ↓      | ↑  | Avg  | ↓      | ↑  | Avg  | ↓      | ↑  | Avg  | ↓      | ↑  | Avg  | ↓      | ↑  | Avg  | ↓       | ↑  | Avg  |
| 01/01            | 29  | 53 | 41.0 | 37          | 49 | 43.0 | 26    | 45 | 35.5 | 32     | 47 | 39.5 | 42     | 51 | 46.5 | 45     | 54 | 49.5 | 41     | 56 | 48.5 | 42     | 52 | 47.0 | 39     | 55 | 47.0 | 39     | 55 | 47.0 | 36     | 60 | 48.0 | 40      | 61 | 50.5 |
| 01/02            | 31  | 55 | 43.0 | 31          | 44 | 37.5 | 34    | 48 | 41.0 | 42     | 51 | 46.5 | 45     | 53 | 49.0 | 43     | 55 | 49.0 | 45     | 52 | 48.5 | 39     | 54 | 46.5 | 39     | 57 | 48.0 | 42     | 58 | 50.0 | 36     | 58 | 47.0 | 39      | 61 | 50.0 |
| 01/03            | 30  | 46 | 38.0 | 39          | 49 | 44.0 | 44    | 51 | 47.5 | 45     | 52 | 48.5 | 44     | 54 | 49.0 | 46     | 52 | 49.0 | 40     | 55 | 47.5 | 35     | 56 | 45.5 | 37     | 58 | 47.5 | 43     | 59 | 51.0 | 37     | 59 | 48.0 | 41      | 58 | 49.5 |
| 01/04            | 39  | 52 | 45.5 | 49          | 51 | 50.0 | 45    | 53 | 49.0 | 42     | 55 | 48.5 | 45     | 52 | 48.5 | 38     | 55 | 46.5 | 33     | 56 | 44.5 | 35     | 58 | 46.5 | 37     | 58 | 47.5 | 36     | 57 | 46.5 | 40     | 59 | 49.5 | 39      | 60 | 49.5 |
| 01/05            | 50  | 54 | 52.0 | 51          | 53 | 52.0 | 40    | 55 | 47.5 | 44     | 52 | 48.0 | 38     | 55 | 46.5 | 33     | 57 | 45.0 | 36     | 57 | 46.5 | 36     | 58 | 47.0 | 38     | 59 | 48.5 | 40     | 60 | 50.0 | 37     | 62 | 49.5 | 41      | 63 | 52.0 |
| 01/06            | 49  | 58 | 53.5 | 41          | 58 | 49.5 | 45    | 52 | 48.5 | 37     | 56 | 46.5 | 33     | 57 | 45.0 | 36     | 57 | 46.5 | 37     | 59 | 48.0 | 39     | 58 | 48.5 | 37     | 61 | 49.0 | 40     | 60 | 50.0 | 38     | 61 | 49.5 | 39      | 63 | 51.0 |
| 01/07            | 40  | 50 | 45.0 | 47          | 52 | 49.5 | 36    | 55 | 45.5 | 33     | 56 | 44.5 | 37     | 58 | 47.5 | 37     | 60 | 48.5 | 38     | 57 | 47.5 | 40     | 58 | 49.0 | 36     | 61 | 48.5 | 40     | 61 | 50.5 | 39     | 61 | 50.0 | 40      | 63 | 51.5 |
| 01/08            | 44  | 53 | 48.5 | 41          | 56 | 48.5 | 33    | 57 | 45.0 | 37     | 59 | 48.0 | 37     | 61 | 49.0 | 38     | 58 | 48.0 | 39     | 60 | 49.5 | 37     | 59 | 48.0 | 40     | 59 | 49.5 | 39     | 59 | 49.0 | 39     | 62 | 50.5 | 40      | 63 | 51.5 |
| 01/09            | 39  | 61 | 50.0 | 32          | 61 | 46.5 | 37    | 59 | 48.0 | 37     | 62 | 49.5 | 38     | 58 | 48.0 | 39     | 59 | 49.0 | 37     | 60 | 48.5 | 40     | 63 | 51.5 | 42     | 62 | 52.0 | 39     | 62 | 50.5 | 39     | 61 | 50.0 | 40      | 64 | 52.0 |
| 01/10            | 32  | 63 | 47.5 | 39          | 61 | 50.0 | 38    | 62 | 50.0 | 39     | 61 | 50.0 | 38     | 61 | 49.5 | 41     | 62 | 51.5 | 37     | 63 | 50.0 | 38     | 62 | 50.0 | 40     | 64 | 52.0 | 40     | 59 | 49.5 | 41     | 60 | 50.5 | 42      | 60 | 51.0 |
| 01/11            | 38  | 67 | 52.5 | 42          | 65 | 53.5 | 40    | 65 | 52.5 | 39     | 65 | 52.0 | 39     | 63 | 51.0 | 41     | 64 | 52.5 | 37     | 62 | 49.5 | 38     | 60 | 49.0 | 38     | 63 | 50.5 | 39     | 63 | 51.0 | 41     | 63 | 52.0 | 42      | 61 | 51.5 |
| 01/12            | 40  | 66 | 53.0 | 33          | 65 | 49.0 | 38    | 66 | 52.0 | 42     | 69 | 55.5 | 39     | 64 | 51.5 | 38     | 62 | 50.0 | 38     | 61 | 49.5 | 38     | 61 | 49.5 | 42     | 64 | 53.0 | 43     | 66 | 54.5 | 42     | 66 | 54.0 | 43      | 66 | 54.5 |
| 01/13            | 32  | 61 | 46.5 | 36          | 62 | 49.0 | 41    | 66 | 53.5 | 38     | 67 | 52.5 | 38     | 66 | 52.0 | 38     | 64 | 51.0 | 38     | 61 | 49.5 | 38     | 64 | 51.0 | 42     | 66 | 54.0 | 45     | 64 | 54.5 | 41     | 63 | 52.0 | 43      | 62 | 52.5 |
| 01/14            | 35  | 64 | 49.5 | 44          | 67 | 55.5 | 38    | 70 | 54.0 | 37     | 64 | 50.5 | 38     | 65 | 51.5 | 38     | 64 | 51.0 | 38     | 65 | 51.5 | 40     | 65 | 52.5 | 47     | 67 | 57.0 | 48     | 65 | 56.5 | 41     | 63 | 52.0 | 42      | 64 | 53.0 |
| 01/15            | 47  | 71 | 59.0 | 37          | 66 | 51.5 | 36    | 63 | 49.5 | 36     | 62 | 49.0 | 37     | 62 | 49.5 | 37     | 64 | 50.5 | 40     | 65 | 52.5 | 41     | 67 | 54.0 | 40     | 61 | 50.5 | 41     | 63 | 52.0 | 38     | 60 | 49.0 | 36      | 63 | 49.5 |
| 01/16            | 37  | 72 | 54.5 | 32          | 64 | 48.0 | 35    | 65 | 50.0 | 38     | 65 | 51.5 | 37     | 67 | 52.0 | 40     | 67 | 53.5 | 39     | 67 | 53.0 | 42     | 67 | 54.5 | 38     | 63 | 50.5 | 38     | 63 | 50.5 | 40     | 63 | 51.5 | 41      | 64 | 52.5 |
| 01/17            | 31  | 61 | 46.0 | 32          | 62 | 47.0 | 38    | 63 | 50.5 | 39     | 64 | 51.5 | 41     | 67 | 54.0 | 42     | 67 | 54.5 | 42     | 67 | 54.5 | 39     | 67 | 53.0 | 42     | 66 | 54.0 | 41     | 64 | 52.5 | 39     | 62 | 50.5 | 39      | 63 | 51.0 |
| 01/18            | 31  | 63 | 47.0 | 34          | 62 | 48.0 | 40    | 65 | 52.5 | 42     | 67 | 54.5 | 42     | 64 | 53.0 | 41     | 66 | 53.5 | 39     | 65 | 52.0 | 37     | 65 | 51.0 | 42     | 68 | 55.0 | 43     | 66 | 54.5 | 41     | 65 | 53.0 | 41      | 64 | 52.5 |
| 01/19            | 33  | 63 | 48.0 | 36          | 66 | 51.0 | 44    | 68 | 56.0 | 42     | 64 | 53.0 | 42     | 67 | 54.5 | 40     | 67 | 53.5 | 37     | 66 | 51.5 | 38     | 67 | 52.5 | 43     | 68 | 55.5 | 43     | 66 | 54.5 | 42     | 65 | 53.5 | 42      | 65 | 53.5 |
| 01/20            | 36  | 70 | 53.0 | 42          | 67 | 54.5 | 41    | 63 | 52.0 | 42     | 66 | 54.0 | 40     | 67 | 53.5 | 38     | 66 | 52.0 | 38     | 66 | 52.0 | 37     | 66 | 51.5 | 42     | 67 | 54.5 | 40     | 65 | 52.5 | 39     | 64 | 51.5 | 41      | 65 | 53.0 |
| 01/21            | 40  | 67 | 53.5 | 42          | 64 | 53.0 | 44    | 68 | 56.0 | 39     | 69 | 54.0 | 37     | 67 | 52.0 | 38     | 69 | 53.5 | 36     | 67 | 51.5 | 36     | 67 | 51.5 | 41     | 67 | 54.0 | 41     | 63 | 52.0 | 40     | 60 | 50.0 | 40      | 56 | 48.0 |
| 01/22            | 41  | 67 | 54.0 | 55          | 70 | 62.5 | 42    | 71 | 56.5 | 38     | 68 | 53.0 | 36     | 65 | 50.5 | 36     | 68 | 52.0 | 37     | 67 | 52.0 | 38     | 65 | 51.5 | 42     | 68 | 55.0 | 40     | 67 | 53.5 | 43     | 63 | 53.0 | 41      | 63 | 52.0 |
| 01/23            | 54  | 72 | 63.0 | 44          | 75 | 59.5 | 36    | 69 | 52.5 | 37     | 72 | 54.5 | 35     | 70 | 52.5 | 37     | 69 | 53.0 | 37     | 64 | 50.5 | 38     | 64 | 51.0 | 41     | 69 | 55.0 | 41     | 65 | 53.0 | 40     | 59 | 49.5 | 38      | 57 | 47.5 |
| 01/24            | 39  | 73 | 56.0 | 33          | 72 | 52.5 | 38    | 73 | 55.5 | 34     | 67 | 50.5 | 35     | 66 | 50.5 | 36     | 63 | 49.5 | 38     | 65 | 51.5 | 39     | 63 | 51.0 | 40     | 61 | 50.5 | 44     | 55 | 49.5 | 38     | 57 | 47.5 | 40      | 58 | 49.0 |
| 01/25            | 33  | 63 | 48.0 | 35          | 68 | 51.5 | 33    | 67 | 50.0 | 35     | 67 | 51.0 | 36     | 66 | 51.0 | 36     | 67 | 51.5 | 36     | 62 | 49.0 | 37     | 59 | 48.0 | 34     | 53 | 43.5 | 33     | 59 | 46.0 | 36     | 59 | 47.5 | 36      | 65 | 50.5 |
| 01/26            | 34  | 69 | 51.5 | 32          | 66 | 49.0 | 35    | 68 | 51.5 | 36     | 65 | 50.5 | 35     | 67 | 51.0 | 37     | 60 | 48.5 | 36     | 60 | 48.0 | 33     | 61 | 47.0 | 39     | 62 | 50.5 | 40     | 63 | 51.5 | 39     | 63 | 51.0 | 40      | 63 | 51.5 |
| 01/27            | 31  | 67 | 49.0 | 31          | 67 | 49.0 | 35    | 68 | 51.5 | 33     | 66 | 49.5 | 34     | 61 | 47.5 | 36     | 62 | 49.0 | 35     | 59 | 47.0 | 35     | 63 | 49.0 | 40     | 64 | 52.0 | 39     | 63 | 51.0 | 38     | 64 | 51.0 | 39      | 67 | 53.0 |
| 01/28            | 31  | 72 | 51.5 | 32          | 68 | 50.0 | 35    | 69 | 52.0 | 35     | 64 | 49.5 | 36     | 67 | 51.5 | 37     | 60 | 48.5 | 35     | 60 | 47.5 | 33     | 63 | 48.0 | 43     | 69 | 56.0 | 40     | 67 | 53.5 | 40     | 67 | 53.5 | 41      | 68 | 54.5 |
| 01/29            | 31  | 71 | 51.0 | 30          | 71 | 50.5 | 33    | 68 | 50.5 | 38     | 67 | 52.5 | 38     | 62 | 50.0 | 36     | 63 | 49.5 | 35     | 65 | 50.0 | 35     | 66 | 50.5 | 40     | 67 | 53.5 | 39     | 68 | 53.5 | 38     | 67 | 52.5 | 42      | 68 | 55.0 |
| 01/30            | 30  | 69 | 49.5 | 30          | 68 | 49.0 | 35    | 66 | 50.5 | 36     | 59 | 47.5 | 34     | 65 | 49.5 | 36     | 66 | 51.0 | 35     | 65 | 50.0 | 35     | 69 | 52.0 | 47     | 68 | 57.5 | 44     | 69 | 56.5 | 41     | 69 | 55.0 | 41      | 70 | 55.5 |
| 01/31            | 30  | 63 | 46.5 | 29          | 63 | 46.0 | 36    | 58 | 47.0 | 32     | 58 | 45.0 | 36     | 67 | 51.5 | 34     | 66 | 50.0 | 38     | 70 | 54.0 | 38     | 70 | 54.0 | 42     | 68 | 55.0 | 39     | 70 | 54.5 | 43     | 70 | 56.5 | 40      | 67 | 53.5 |

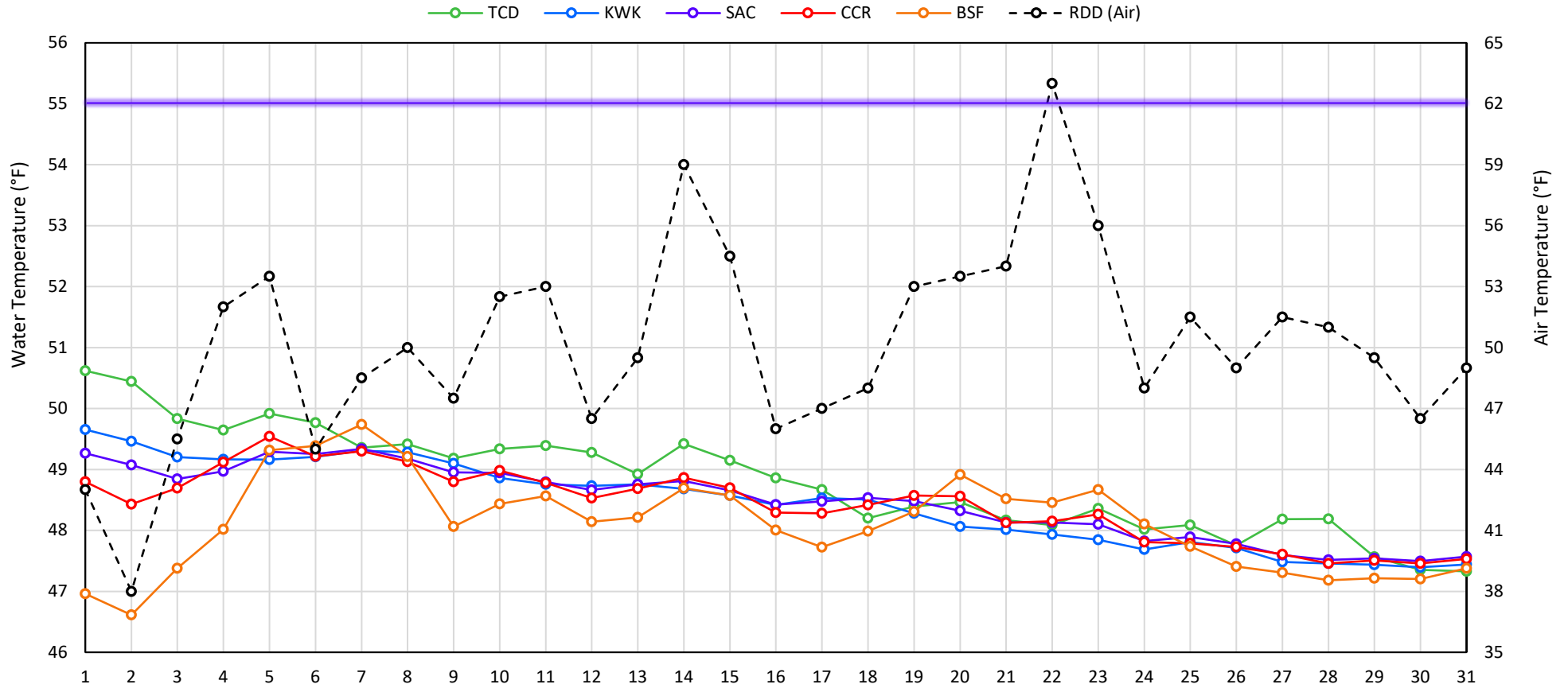
Web Links

- [10-Day Min/Max Forecast](#)
- [Previous Days Min/Max Actuals](#)

Legend

- NR = Forecasted temperatures not recorded
- 100** = Previous day actual temperatures in red and bolded indicate a record temperature for that date

## Mean Daily Temperatures



| Station Details |                  |  |                            |
|-----------------|------------------|--|----------------------------|
| Code            | Body of Water    | Location <sup>1</sup>                      | CDEC Link                  |
| TCD             | N/A              | Shasta Power Plant                         | N/A                        |
| SHD             | Sacramento River | 0.3 miles downstream of Shasta Power Plant | <a href="#">Click Here</a> |
| SPP             | N/A              | Spring Creek Power Plant                   | N/A                        |
| KWK             | Sacramento River | 0.8 miles downstream of Keswick Dam        | <a href="#">Click Here</a> |
| SAC             | Sacramento River | 4.8 miles downstream of Keswick Dam        | <a href="#">Click Here</a> |
| CCR             | Sacramento River | 9.7 miles downstream of Keswick Dam        | <a href="#">Click Here</a> |
| BSF             | Sacramento River | 25 miles downstream of Keswick Dam         | <a href="#">Click Here</a> |
| JLF             | Sacramento River | 34 miles downstream of Keswick Dam         | <a href="#">Click Here</a> |
| BND             | Sacramento River | 41 miles downstream of Keswick Dam         | <a href="#">Click Here</a> |
| RDB             | Sacramento River | 58 miles downstream of Keswick Dam         | <a href="#">Click Here</a> |
| IGO             | Clear Creek      | 7.3 miles downstream of Whiskeytown Dam    | <a href="#">Click Here</a> |
| LWS             | Trinity River    | 1.1 miles downstream of Lewiston Dam       | <a href="#">Click Here</a> |
| DGC             | Trinity River    | 19 miles downstream of Lewiston Dam        | <a href="#">Click Here</a> |
| NFH             | Trinity River    | 38 miles downstream of Lewiston Dam        | <a href="#">Click Here</a> |

| Water Right Temperature Control Points |            |            |                   |            |
|--|------------|------------|-------------------|------------|
| River                                  | Point      | Temp. (°F) | Begin Date        | End Date   |
| Sacramento                             | CCR        | 56         | 09/21/2020        | 04/18/2021 |
| Sacramento                             | CCR        | 60         | 04/18/2021        | 05/17/2021 |
| Sacramento                             | SAC        | 57         | 05/17/2021        | 06/15/2021 |
| <b>Sacramento</b>                      | <b>SAC</b> | <b>55</b>  | <b>06/15/2021</b> | <b>TBD</b> |
| Trinity                                | DGC        | 56         | 09/15/2021        | 10/01/2021 |
| Trinity                                | NFH        | 56         | 10/01/2021        | 12/31/2021 |
|  |            |            |                   |            |
|  |            |            |                   |            |
|  |            |            |                   |            |

### Notes

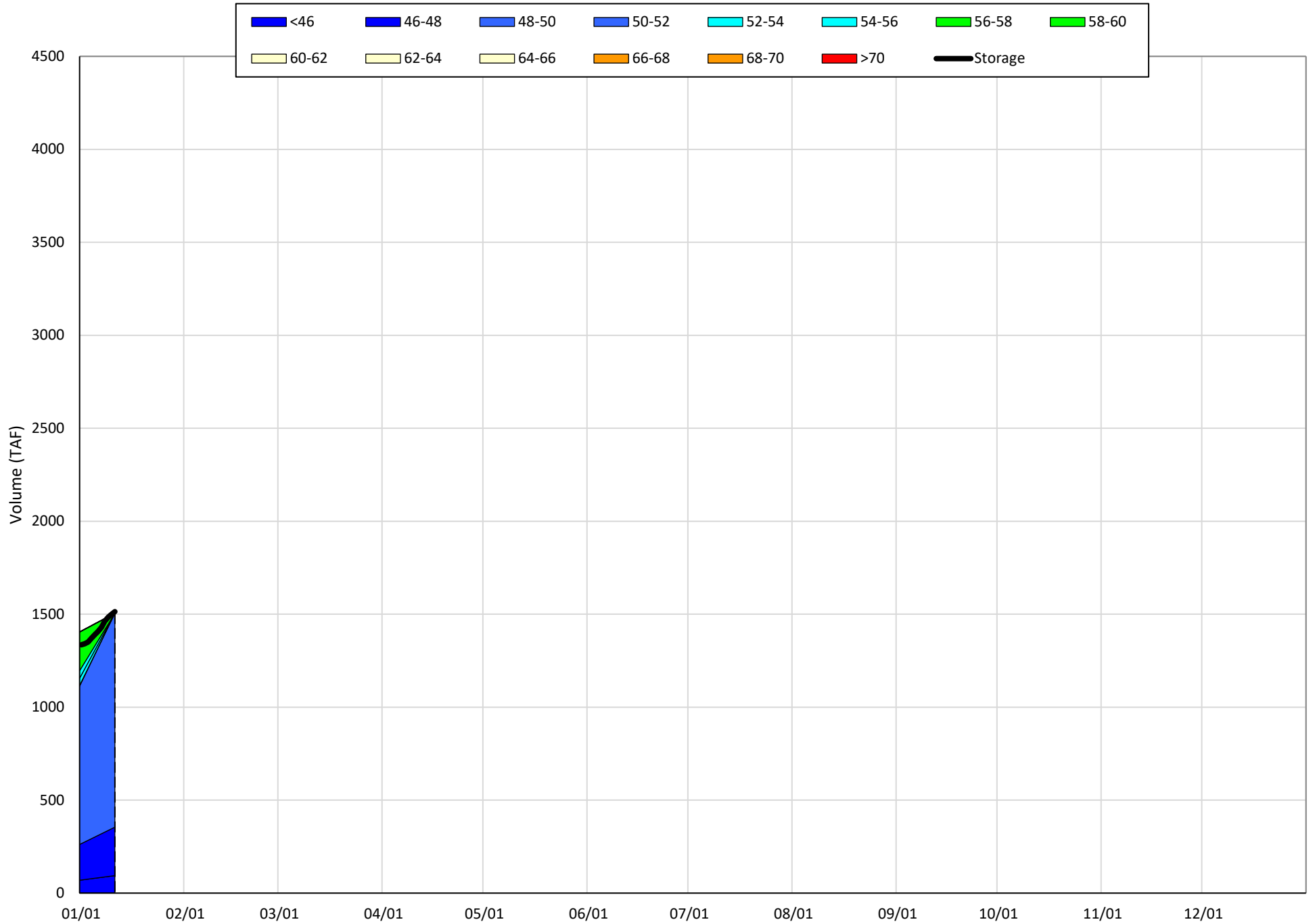
<sup>1</sup> Distances are approximate

# Shasta Lake Isothermobaths & Cold Water Pool Statistics

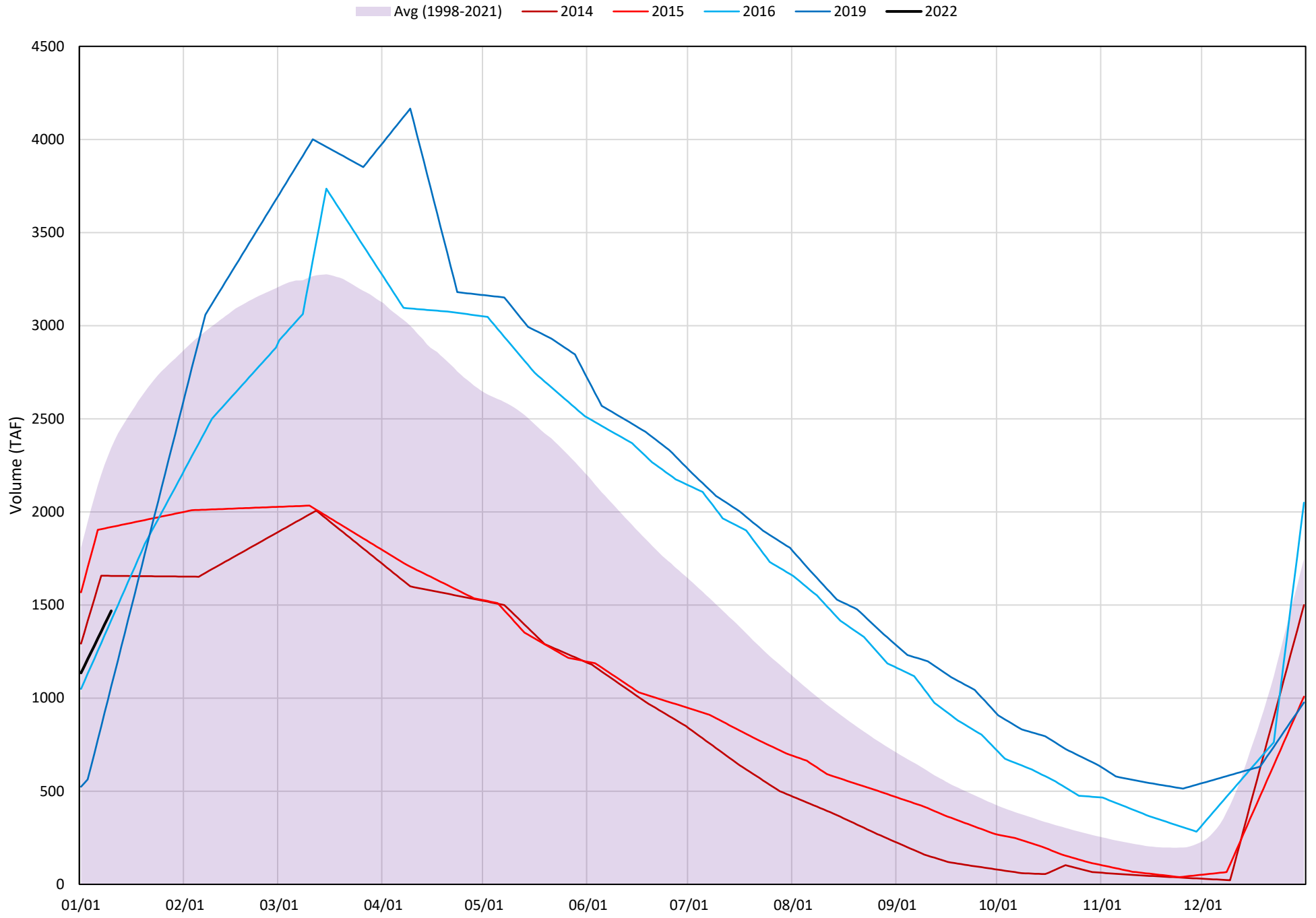
## 2022

| Page | Description  |
|------|--|
| 6    | - Shasta Lake Isothermobaths Plot  |
| 7    | - Shasta Lake Cold Water Pool Volume $\leq 52^{\circ}\text{F}$                       |
| 8    | - Shasta Lake Cold Water Pool Volume $\leq 50^{\circ}\text{F}$                       |
| 9    | - Shasta Lake Cold Water Pool Volume $\leq 48^{\circ}\text{F}$                       |
| 10   | - Shasta Lake Cold Water Pool Volume $\leq 52^{\circ}\text{F}$ - Percent Exceedances |
| 11   | - Shasta Lake Cold Water Pool Volume $\leq 50^{\circ}\text{F}$ - Percent Exceedances |
| 12   | - Shasta Lake Cold Water Pool Volume $\leq 48^{\circ}\text{F}$ - Percent Exceedances |
| 13   | - Shasta Lake Cold Water Pool Comparison by Year                                     |

# Shasta Lake Isothermobaths Plot - 2022

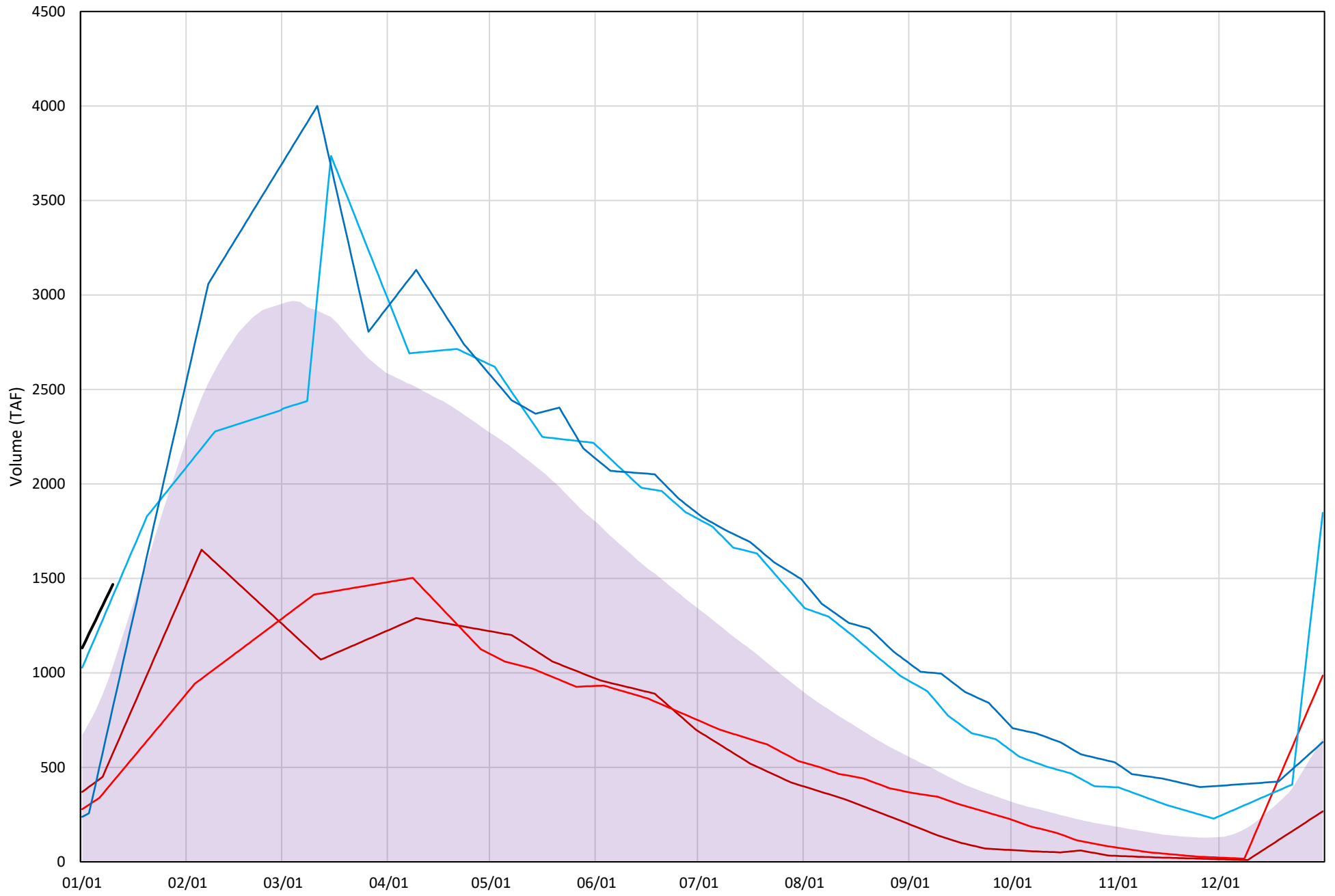


# Shasta Lake Cold Water Pool Volume $\leq 52^{\circ}\text{F}$



# Shasta Lake Cold Water Pool Volume $\leq 50^{\circ}\text{F}$

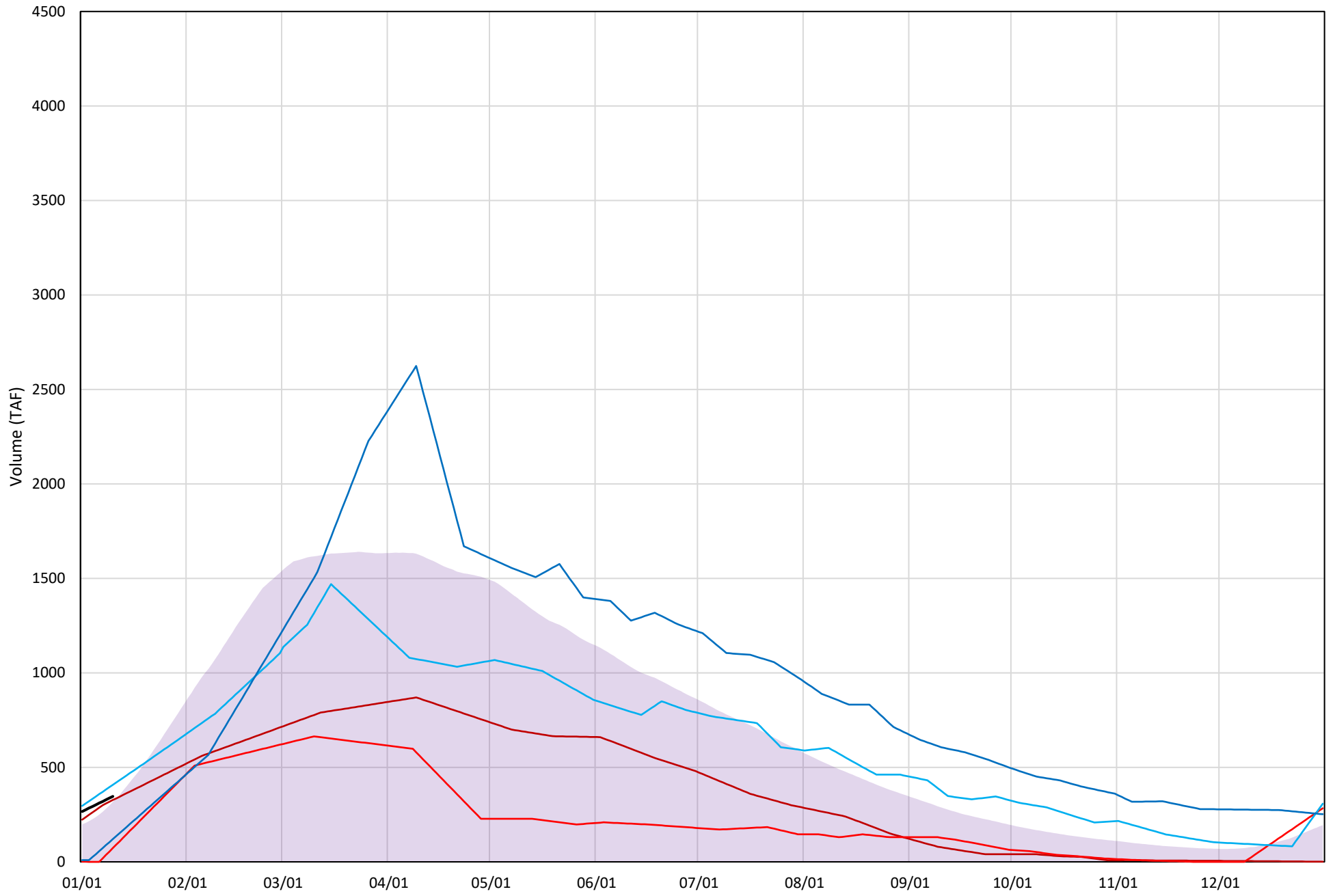
Avg (1998-2021) 2014 2015 2016 2019 2022





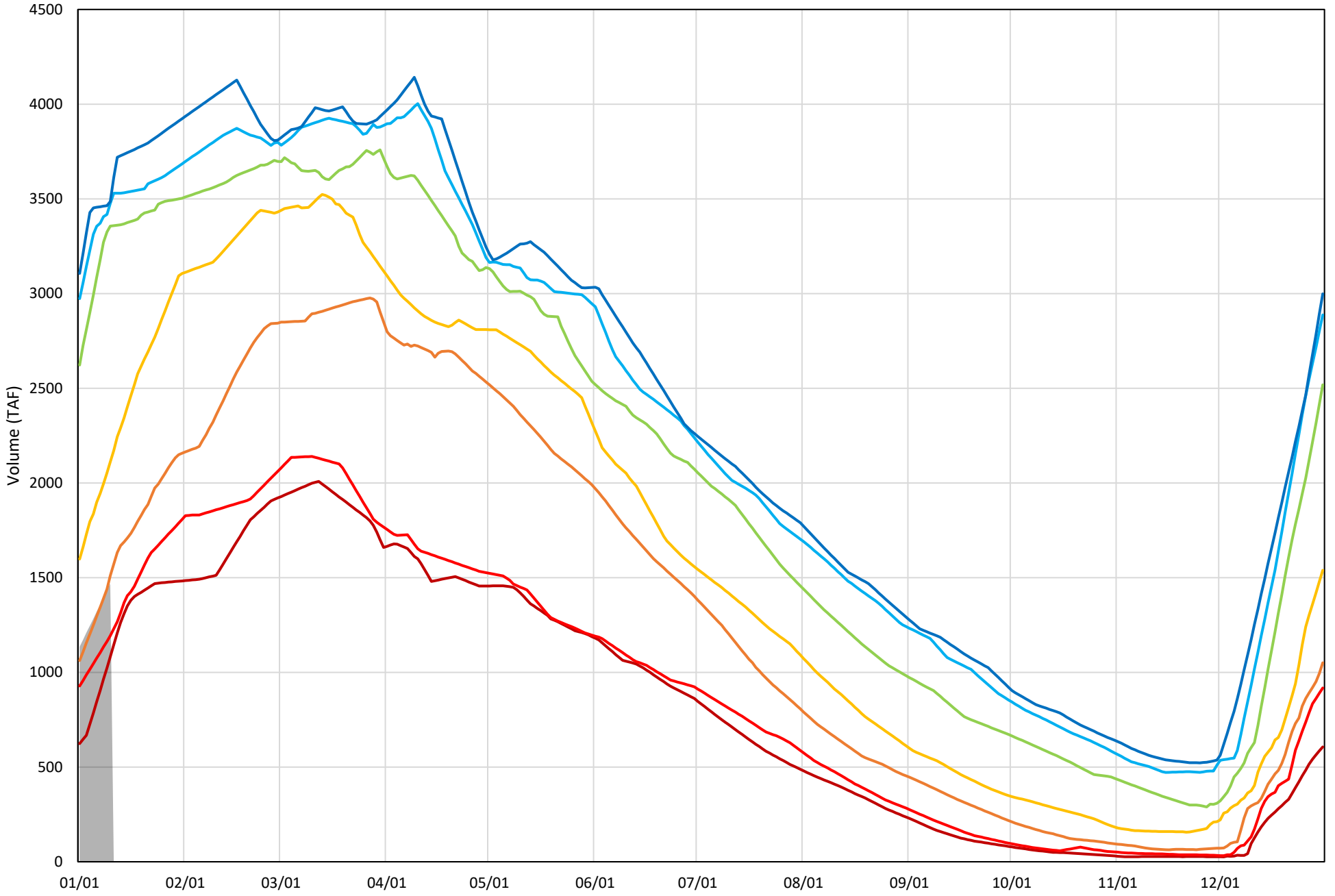
# Shasta Lake Cold Water Pool Volume $\leq 48^{\circ}\text{F}$

Avg (1998-2021) 2014 2015 2016 2019 2022



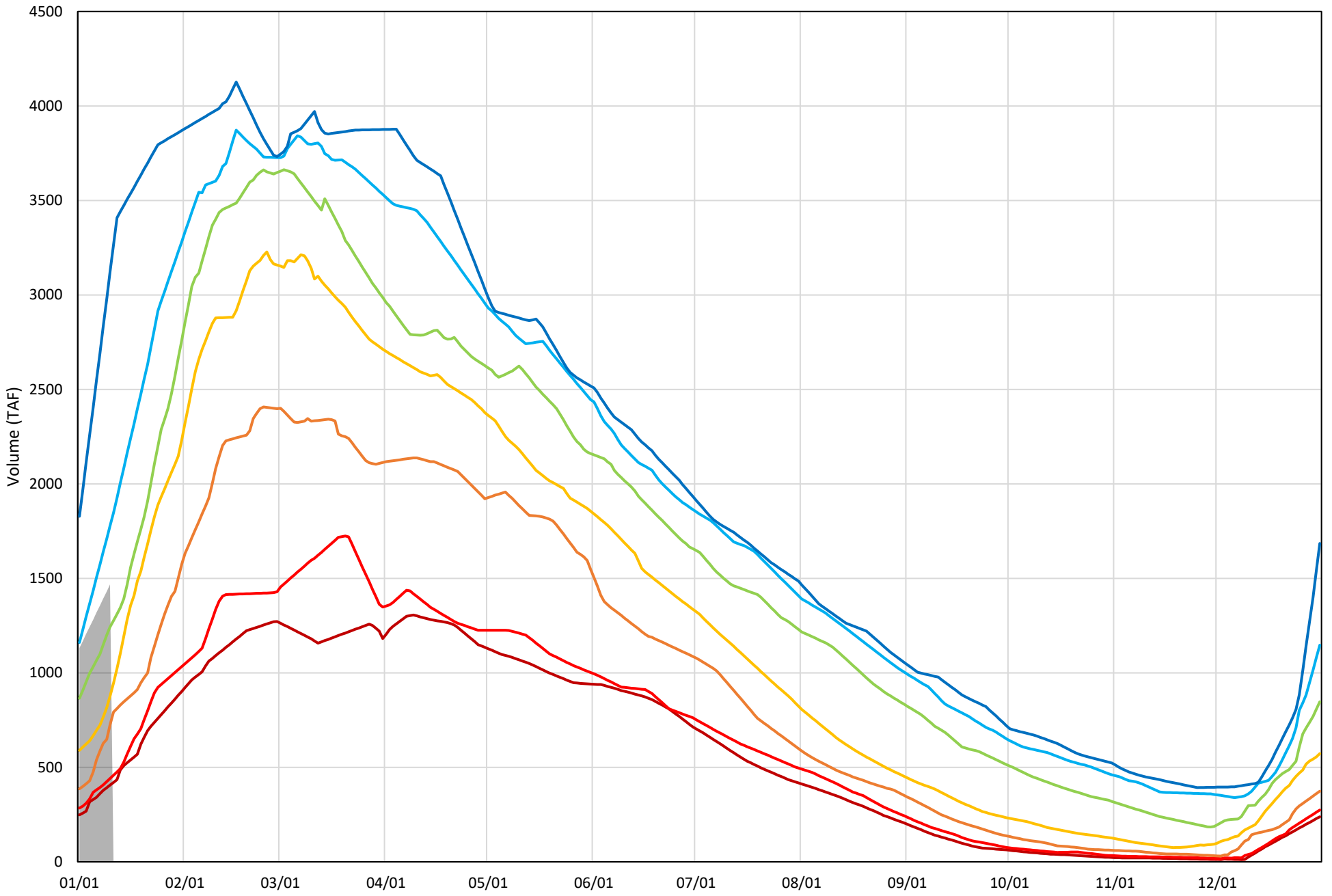
Shasta Lake Cold Water Pool Volume  $\leq 52^{\circ}\text{F}$  - Percent Exceedances (1998-2021)

2022 95 90 75 50 25 10 5



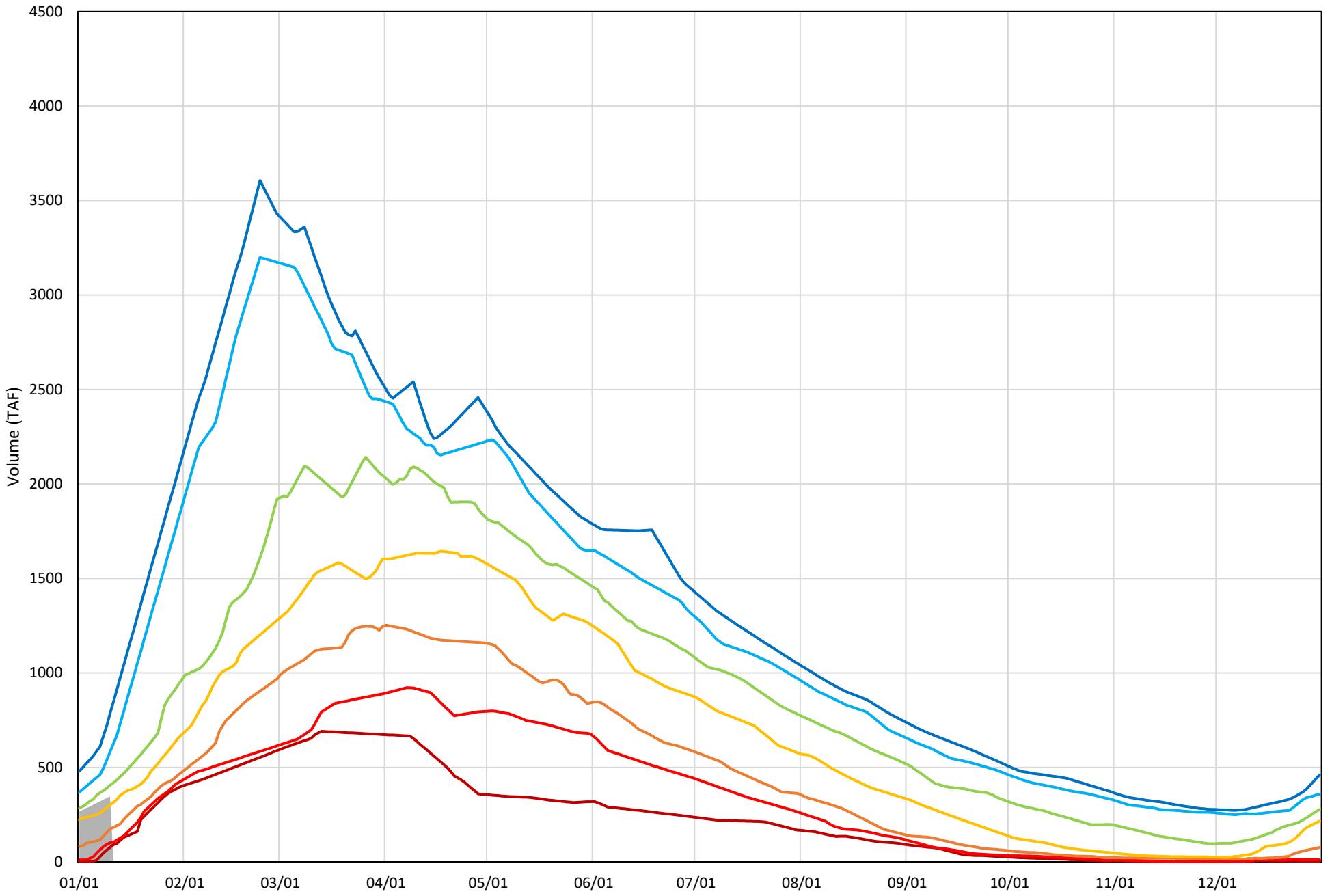
Shasta Lake Cold Water Pool Volume  $\leq 50^{\circ}\text{F}$  - Percent Exceedances (1998-2021)

2022 95 90 75 50 25 10 5



Shasta Lake Cold Water Pool Volume  $\leq 48^{\circ}\text{F}$  - Percent Exceedances (1998-2021)

2022 95 90 75 50 25 10 5



### Shasta Lake Cold Water Pool Comparison by Year (for Specified Date)

| Jan-11<br>2022 | Δ TAF |       |      |           | % Δ  |      |      |           |
|----------------|-------|-------|------|-----------|------|------|------|-----------|
|                | ≤52°  | ≤50°  | ≤48° | Abs. Avg. | ≤52° | ≤50° | ≤48° | Abs. Avg. |
| 1998           | -224  | -263  | -98  | 195       | -15  | -18  | -28  | 21        |
| 1999           | 1869  | -203  | 497  | 857       | 127  | -14  | 144  | 95        |
| 2000           | 1197  | -698  | -81  | 659       | 82   | -48  | -24  | 51        |
| 2001           | 833   | -1010 | -233 | 692       | 57   | -69  | -67  | 64        |
| 2002           | 776   | 681   | 49   | 502       | 53   | 46   | 14   | 38        |
| 2003           | 1847  | -503  | 15   | 789       | 126  | -34  | 4    | 55        |
| 2004           | 1983  | -559  | -226 | 923       | 135  | -38  | -65  | 79        |
| 2005           | 212   | -80   | -39  | 111       | 14   | -5   | -11  | 10        |
| 2006           | 2019  | -495  | -123 | 879       | 137  | -34  | -36  | 69        |
| 2007           | 1894  | -748  | -76  | 906       | 129  | -51  | -22  | 67        |
| 2008           | 425   | -709  | 260  | 465       | 29   | -48  | 75   | 51        |
| 2009           | -213  | -213  | -173 | 200       | -14  | -15  | -50  | 26        |
| 2010           | 509   | -548  | -6   | 354       | 35   | -37  | -2   | 25        |
| 2011           | 2004  | -624  | -172 | 933       | 136  | -43  | -50  | 76        |
| 2012           | 1598  | -730  | 128  | 819       | 109  | -50  | 37   | 65        |
| 2013           | 1915  | -457  | 109  | 827       | 130  | -31  | 31   | 64        |
| 2014           | 188   | -894  | -19  | 367       | 13   | -61  | -6   | 26        |
| 2015           | 450   | -1044 | -274 | 589       | 31   | -71  | -79  | 60        |
| 2016           | -50   | -61   | 61   | 58        | -3   | -4   | 18   | 8         |
| 2017           | 2010  | 1977  | 212  | 1400      | 137  | 135  | 61   | 111       |
| 2018           | -327  | -849  | 18   | 398       | -22  | -58  | 5    | 28        |
| 2019           | -406  | -651  | -226 | 428       | -28  | -44  | -65  | 46        |
| 2020           | -7    | -680  | -51  | 246       | 0    | -46  | -15  | 21        |
| 2021           | 483   | -1068 | -258 | 603       | 33   | -73  | -75  | 60        |
| 2022           | 0     | 0     | 0    | 0         | 0    | 0    | 0    | 0         |

Historic - Current

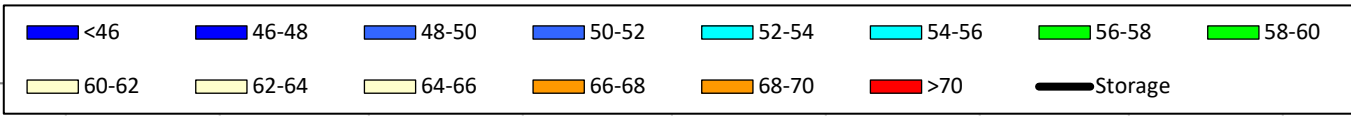
(Historic - Current) / Current

# Trinity Lake Isothermobaths & Cold Water Pool Statistics

## 2022

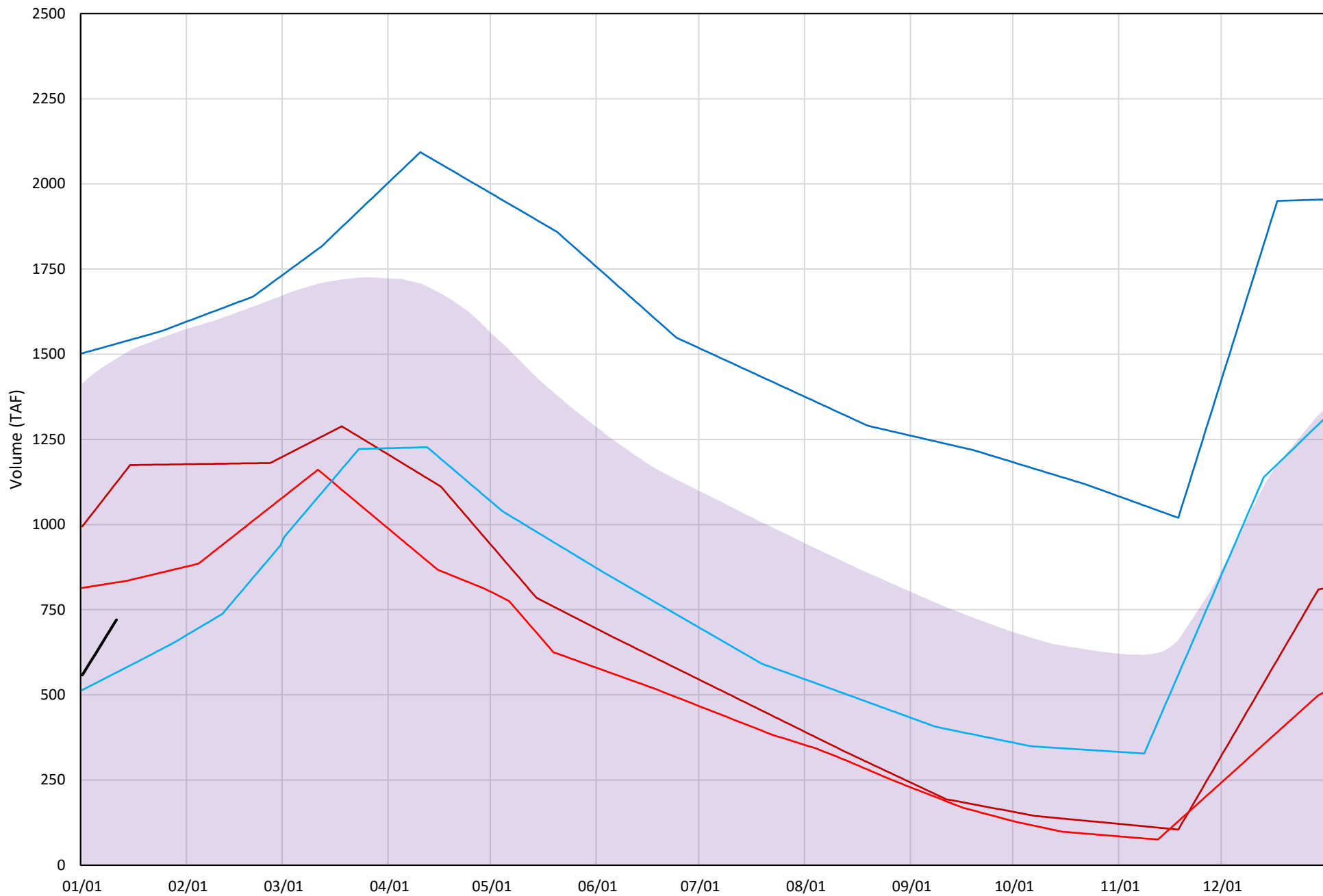
| Page | Description   |
|------|---|
| 15   | - Trinity Lake Isothermobaths Plot  |
| 16   | - Trinity Lake Cold Water Pool Volume $\leq 52^{\circ}\text{F}$                       |
| 17   | - Trinity Lake Cold Water Pool Volume $\leq 50^{\circ}\text{F}$                       |
| 18   | - Trinity Lake Cold Water Pool Volume $\leq 48^{\circ}\text{F}$                       |
| 19   | - Trinity Lake Cold Water Pool Volume $\leq 52^{\circ}\text{F}$ - Percent Exceedances |
| 20   | - Trinity Lake Cold Water Pool Volume $\leq 50^{\circ}\text{F}$ - Percent Exceedances |
| 21   | - Trinity Lake Cold Water Pool Volume $\leq 48^{\circ}\text{F}$ - Percent Exceedances |
| 22   | - Trinity Lake Cold Water Pool Comparison by Year                                     |

Trinity Lake Isothermobaths Plot - 2022



# Trinity Lake Cold Water Pool Volume $\leq 52^{\circ}\text{F}$

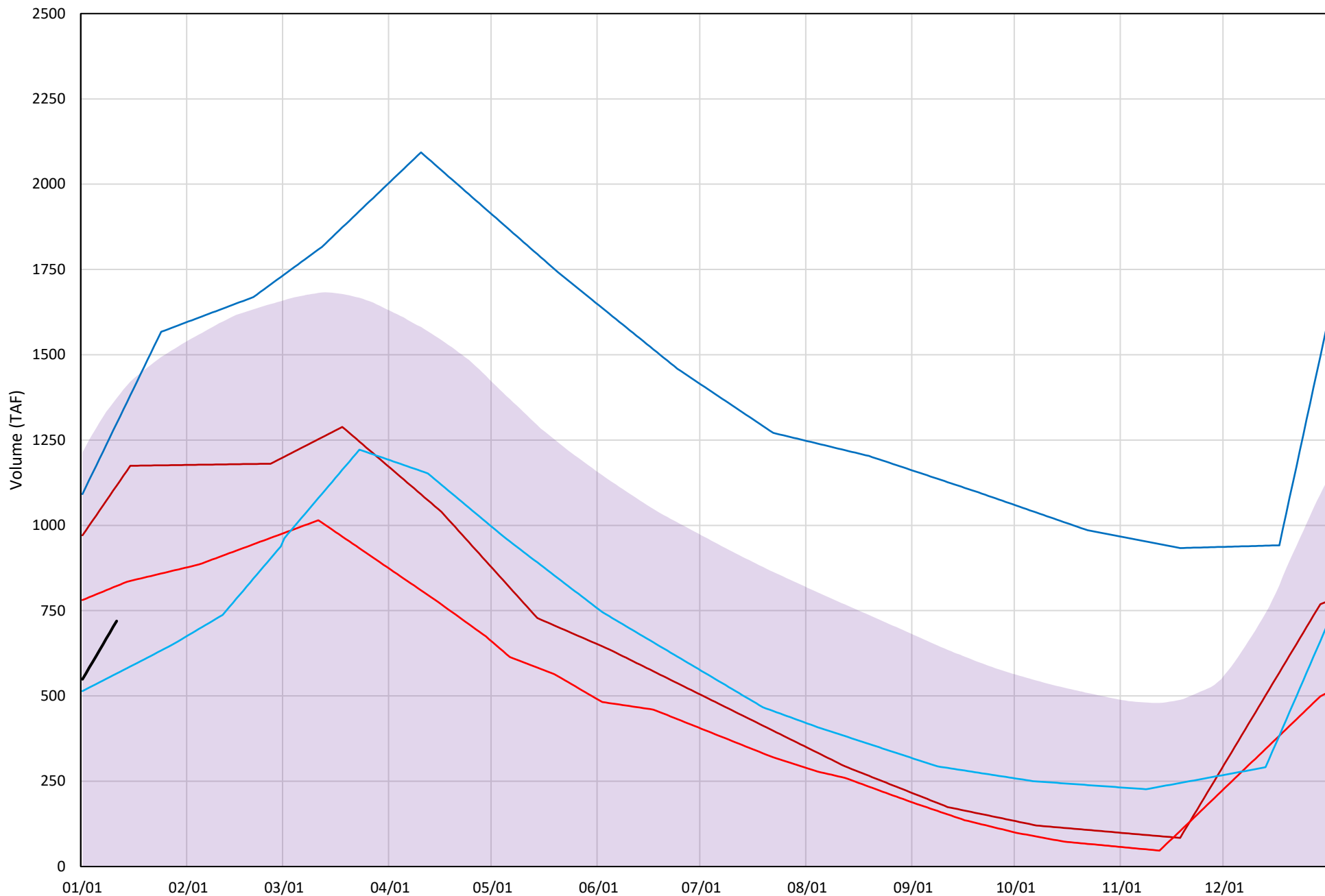
Avg (2000-2021) 2014 2015 2016 2019 2022





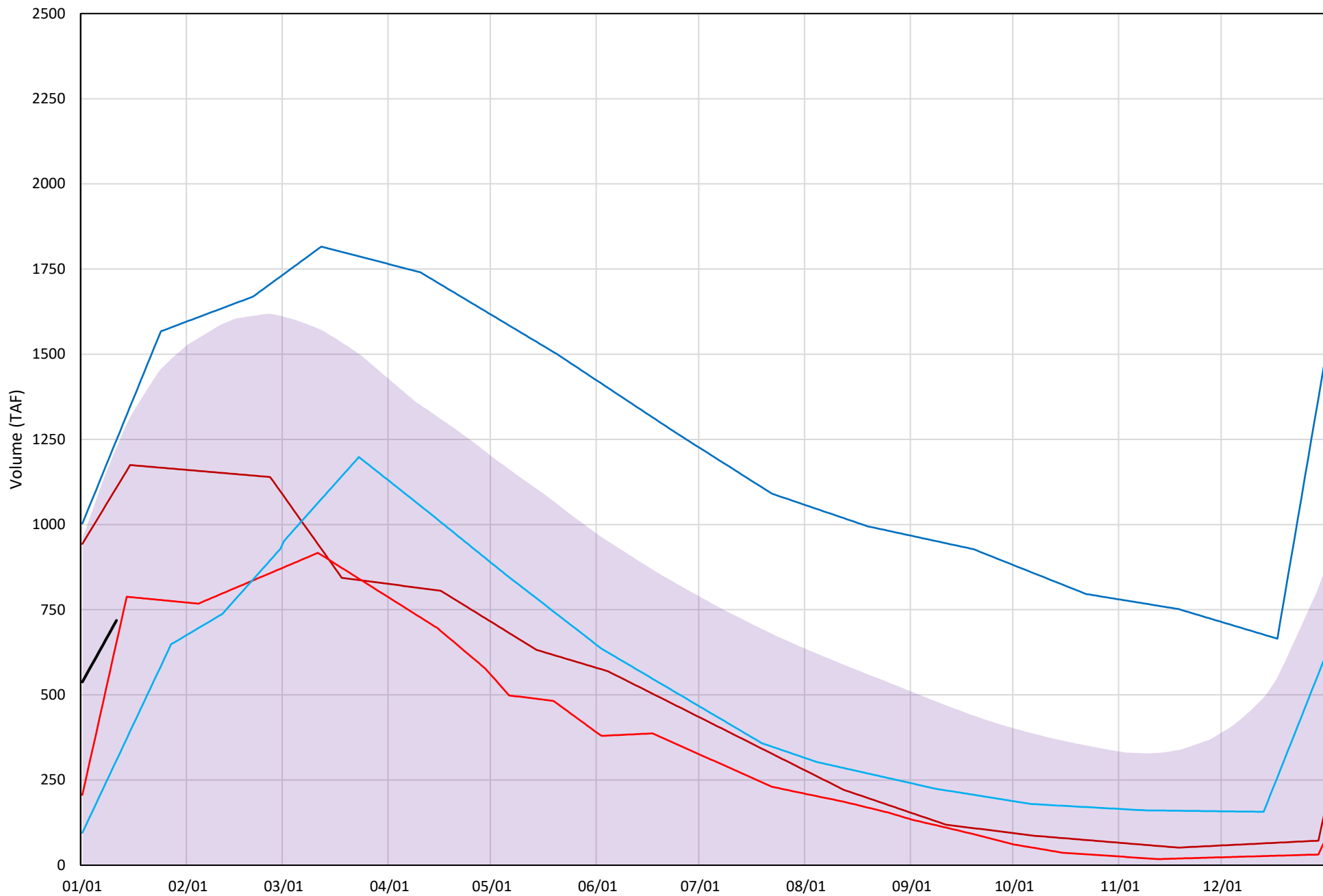
# Trinity Lake Cold Water Pool Volume ≤50°F

Avg (2000-2021) 2014 2015 2016 2019 2022



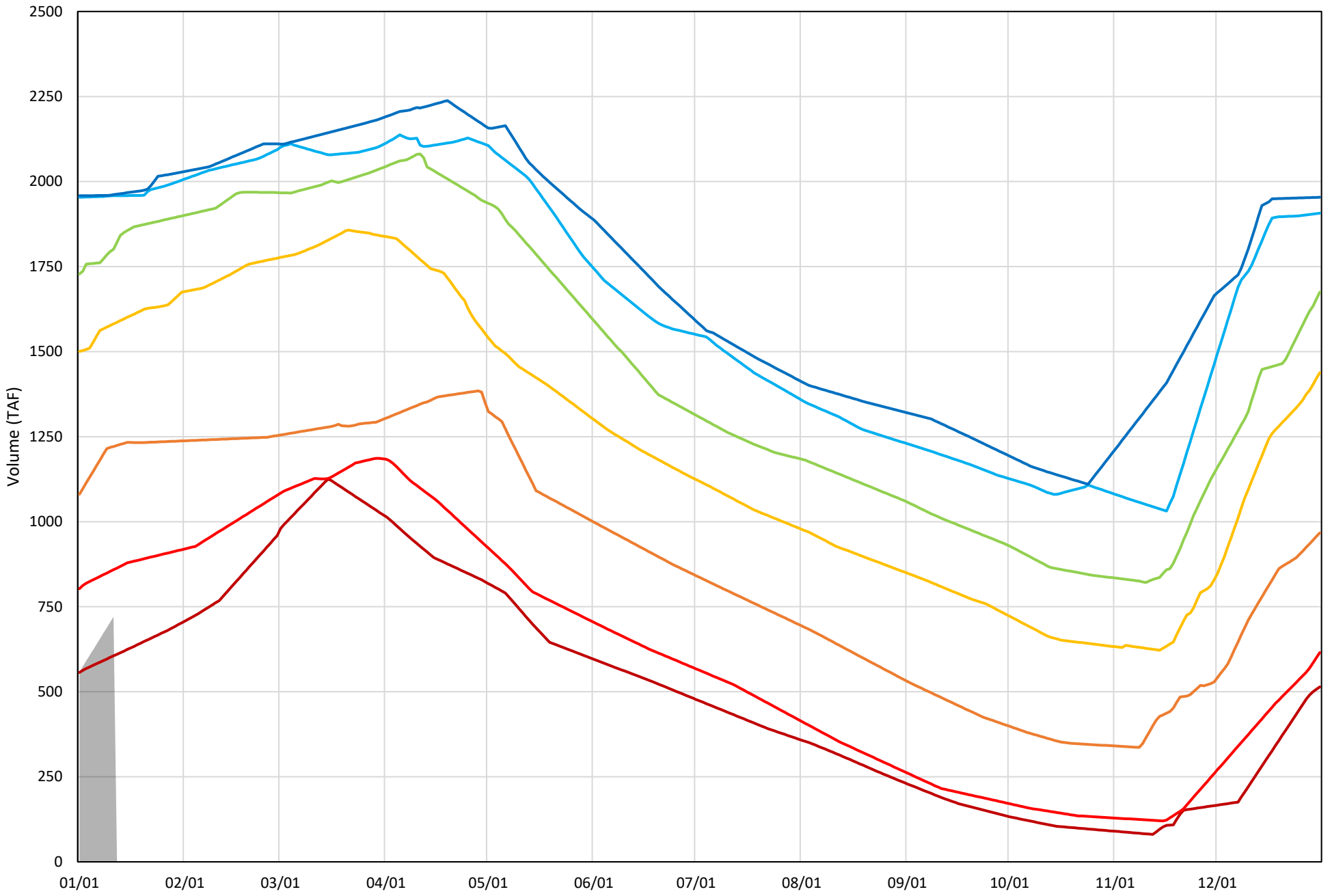
# Trinity Lake Cold Water Pool Volume $\leq 48^{\circ}\text{F}$

Avg (2000-2021) 2014 2015 2016 2019 2022

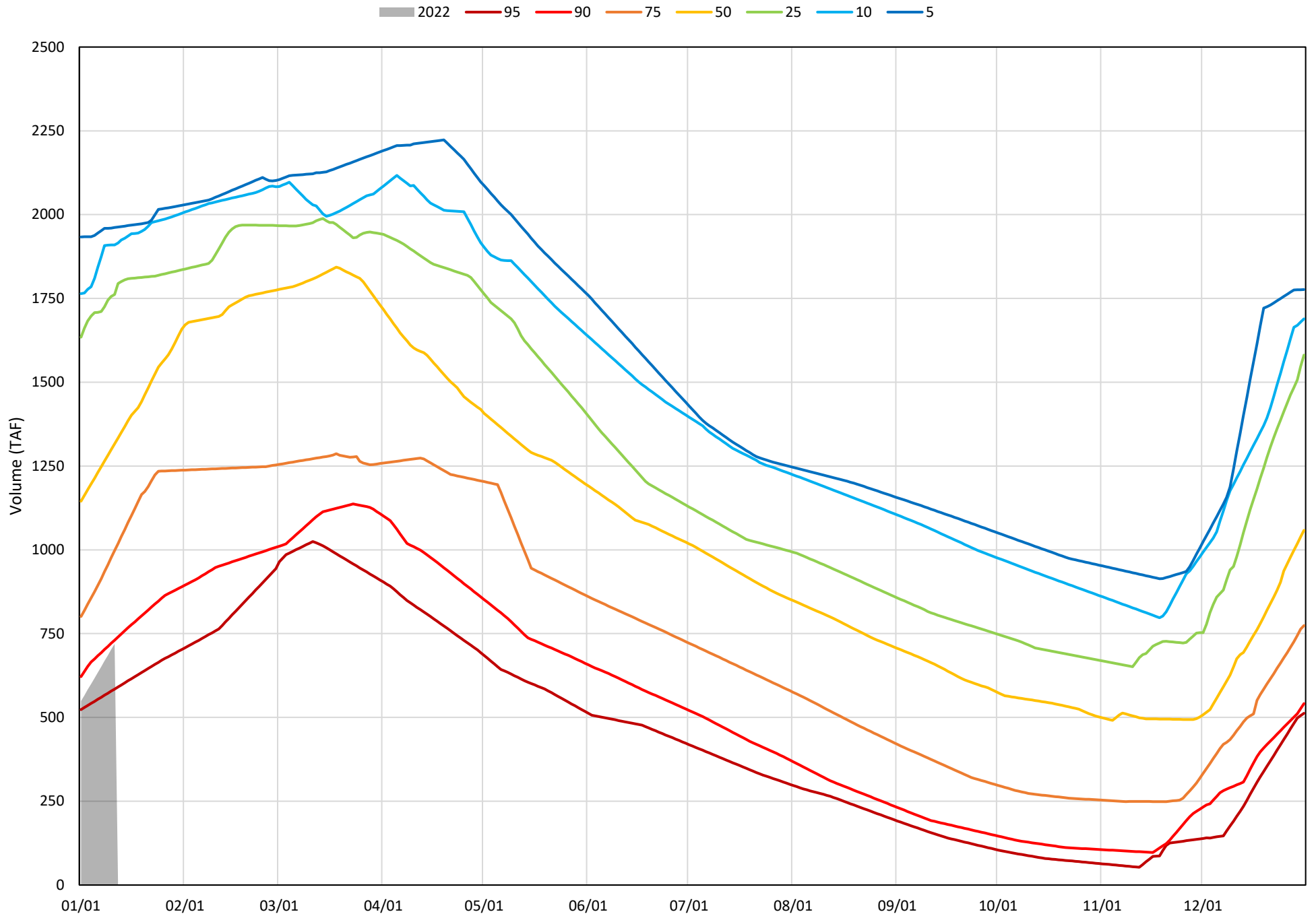


Trinity Lake Cold Water Pool Volume ≤52°F - Percent Exceedances (2000-2021)

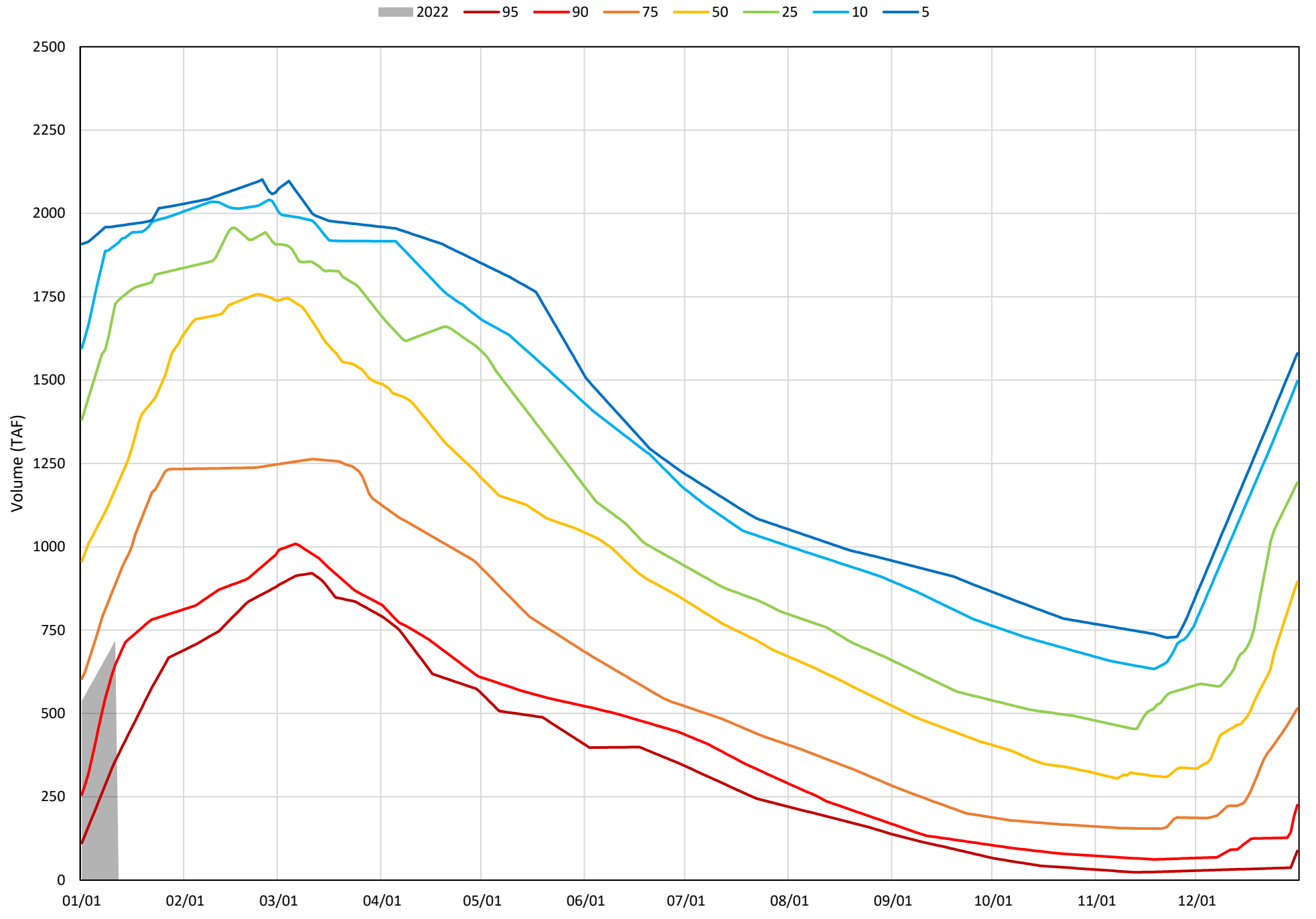
2022 95 90 75 50 25 10 5



Trinity Lake Cold Water Pool Volume  $\leq 50^{\circ}\text{F}$  - Percent Exceedances (2000-2021)



Trinity Lake Cold Water Pool Volume  $\leq 48^{\circ}\text{F}$  - Percent Exceedances (2000-2021)



### Trinity Cold Water Pool Comparison by Year (for Specified Date)

| Jan-12<br>2022 | $\Delta$ TAF    |                 |                 |           | % $\Delta$      |                 |                 |           |
|----------------|-----------------|-----------------|-----------------|-----------|-----------------|-----------------|-----------------|-----------|
|                | $\leq 52^\circ$ | $\leq 50^\circ$ | $\leq 48^\circ$ | Abs. Avg. | $\leq 52^\circ$ | $\leq 50^\circ$ | $\leq 48^\circ$ | Abs. Avg. |
| 2000           | 1239            | 1240            | 1241            | 1240      | 172             | 172             | 173             | 172       |
| 2001           | 982             | 983             | 284             | 749       | 136             | 137             | 40              | 104       |
| 2002           | 570             | 541             | 498             | 537       | 79              | 75              | 69              | 75        |
| 2003           | 912             | 913             | 871             | 899       | 127             | 127             | 121             | 125       |
| 2004           | 1118            | 1030            | 1010            | 1053      | 155             | 143             | 141             | 146       |
| 2005           | 807             | 290             | 161             | 419       | 112             | 40              | 22              | 58        |
| 2006           | 1093            | 1062            | 1010            | 1055      | 152             | 148             | 141             | 147       |
| 2007           | 1073            | 1074            | 628             | 925       | 149             | 149             | 87              | 129       |
| 2008           | 619             | 614             | 606             | 613       | 86              | 85              | 84              | 85        |
| 2009           | 206             | 201             | 198             | 201       | 29              | 28              | 28              | 28        |
| 2010           | 248             | -28             | -75             | 117       | 34              | -4              | -10             | 16        |
| 2011           | 1014            | 1015            | 1016            | 1015      | 141             | 141             | 141             | 141       |
| 2012           | 1235            | 538             | 409             | 727       | 172             | 75              | 57              | 101       |
| 2013           | 1077            | 1071            | 1061            | 1070      | 150             | 149             | 148             | 149       |
| 2014           | 403             | 397             | 390             | 397       | 56              | 55              | 54              | 55        |
| 2015           | 110             | 103             | -65             | 92        | 15              | 14              | -9              | 13        |
| 2016           | -154            | -154            | -410            | 240       | -21             | -21             | -57             | 33        |
| 2017           | 699             | 242             | 171             | 371       | 97              | 34              | 24              | 52        |
| 2018           | 1035            | 1035            | 42              | 704       | 144             | 144             | 6               | 98        |
| 2019           | 810             | 579             | 530             | 640       | 113             | 80              | 74              | 89        |
| 2020           | 1241            | 1242            | 1243            | 1242      | 172             | 173             | 173             | 173       |
| 2021           | 534             | 378             | 350             | 420       | 74              | 52              | 49              | 58        |
| 2022           | 0               | 0               | 0               | 0         | 0               | 0               | 0               | 0         |

Historic - Current

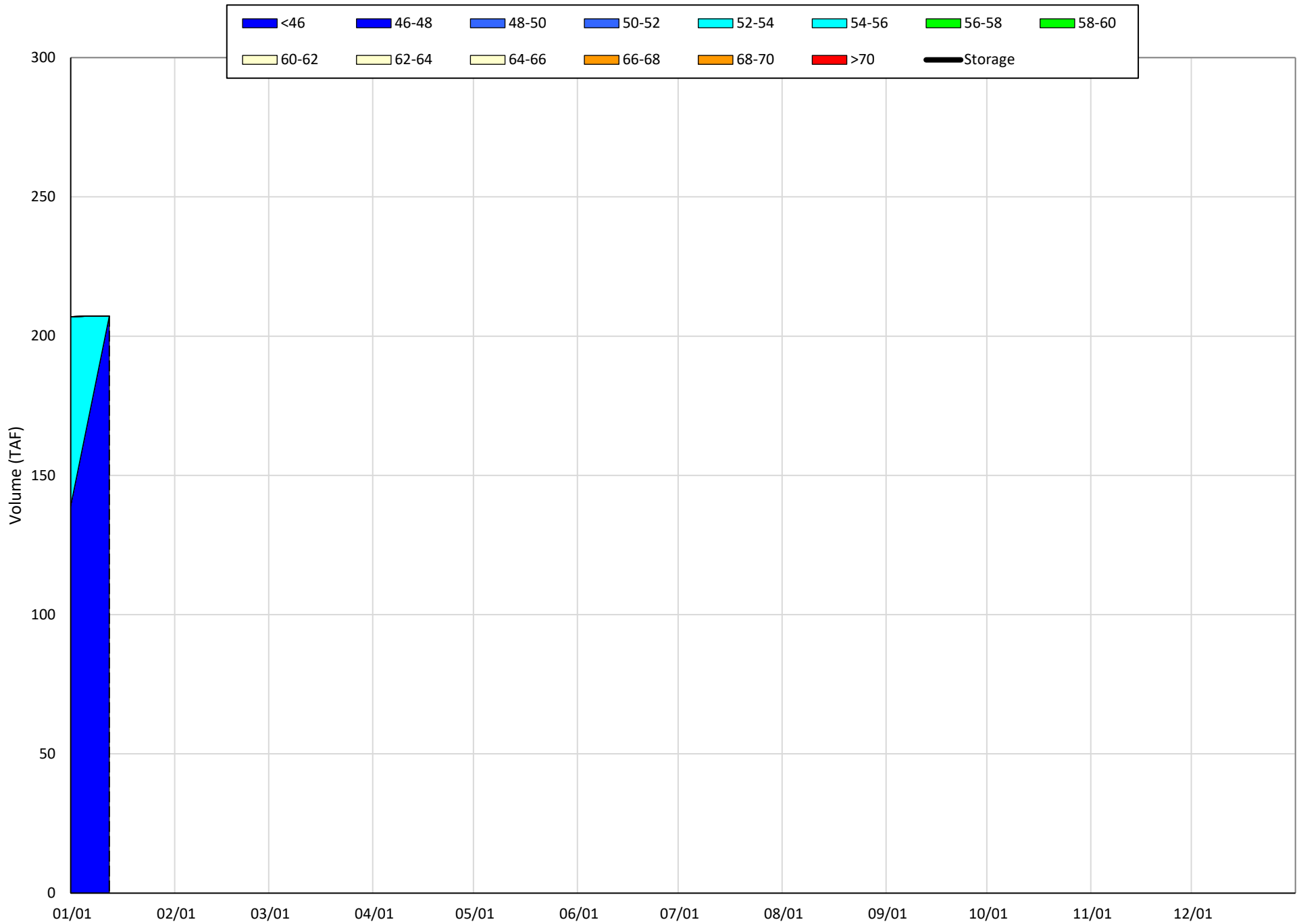
(Historic - Current) / Current

# Whiskeytown Lake Isothermobaths & Cold Water Pool Statistics

## 2022

| Page | Description   |
|------|---|
| 24   | - Whiskeytown Lake Isothermobaths Plot  |
| 25   | - Whiskeytown Lake Cold Water Pool Volume $\leq 60^{\circ}\text{F}$                       |
| 26   | - Whiskeytown Lake Cold Water Pool Volume $\leq 58^{\circ}\text{F}$                       |
| 27   | - Whiskeytown Lake Cold Water Pool Volume $\leq 56^{\circ}\text{F}$                       |
| 28   | - Whiskeytown Lake Cold Water Pool Volume $\leq 60^{\circ}\text{F}$ - Percent Exceedances |
| 29   | - Whiskeytown Lake Cold Water Pool Volume $\leq 58^{\circ}\text{F}$ - Percent Exceedances |
| 30   | - Whiskeytown Lake Cold Water Pool Volume $\leq 56^{\circ}\text{F}$ - Percent Exceedances |
| 31   | - Whiskeytown Lake Cold Water Pool Comparison by Year                                     |

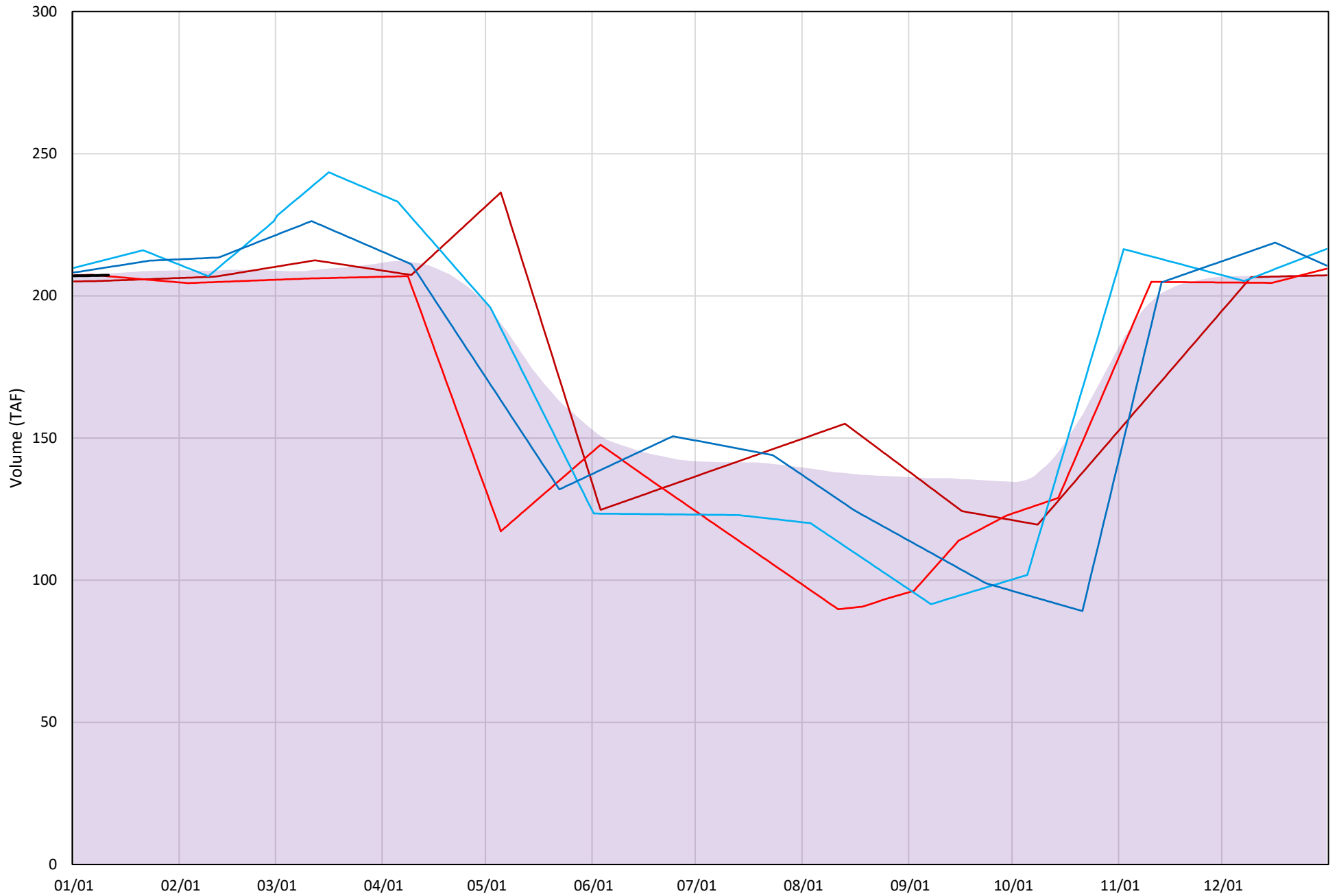
# Whiskeytown Lake Isothermobaths Plot - 2022





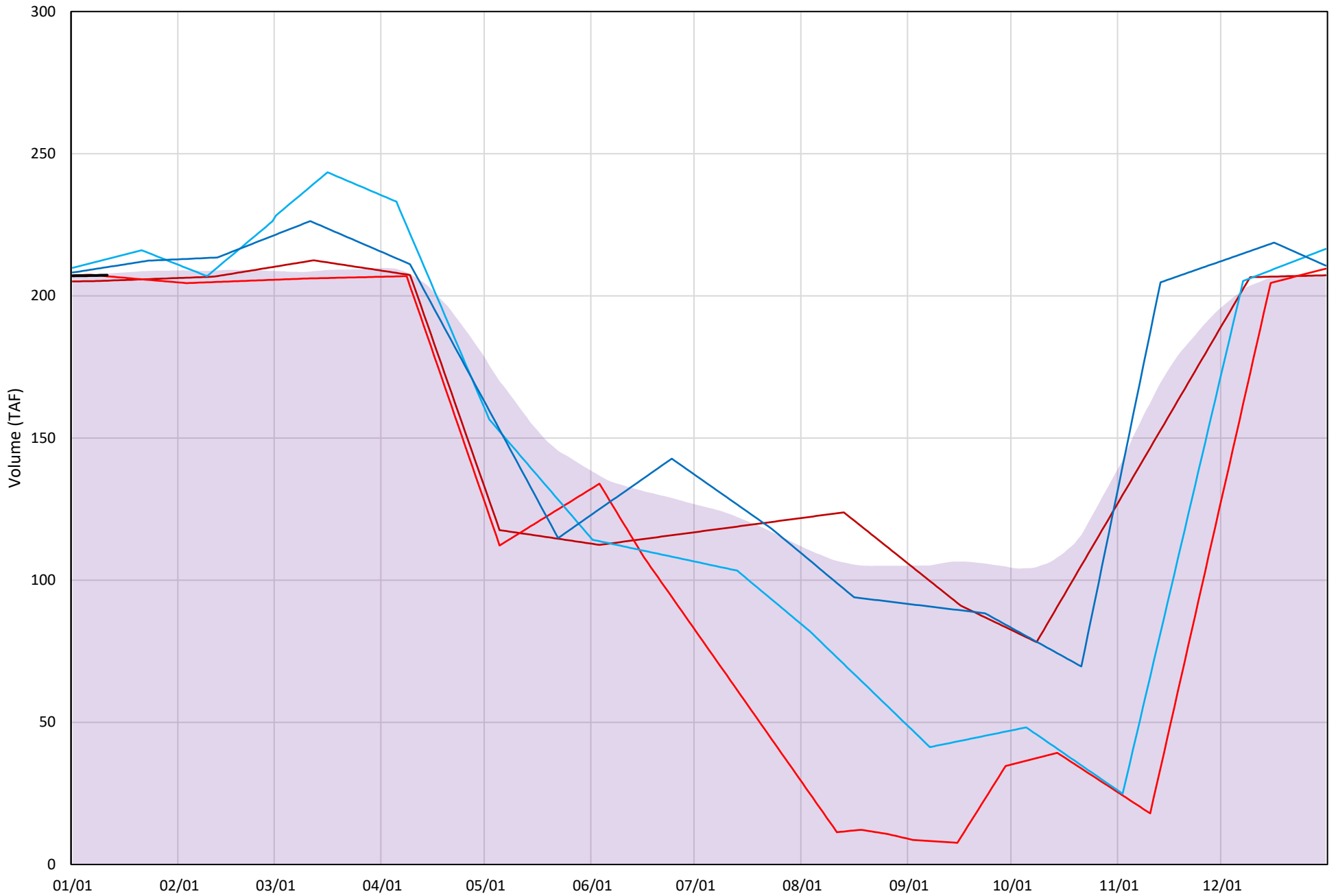
# Whiskeytown Lake Cold Water Pool Volume $\leq 60^{\circ}\text{F}$

Avg (2000-2021) 2014 2015 2016 2019 2022



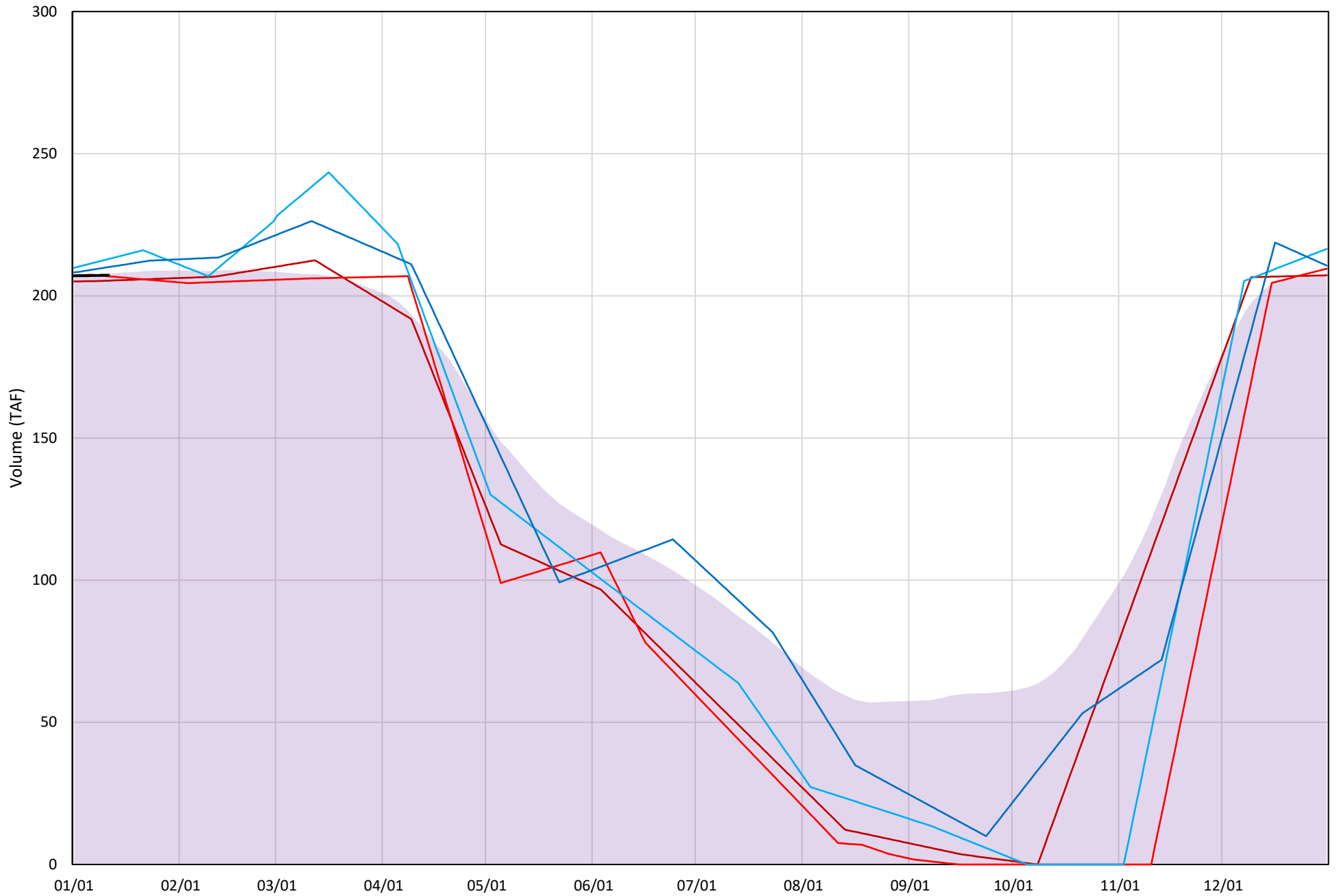
# Whiskeytown Lake Cold Water Pool Volume $\leq 58^{\circ}\text{F}$

Avg (2000-2021) 2014 2015 2016 2019 2022



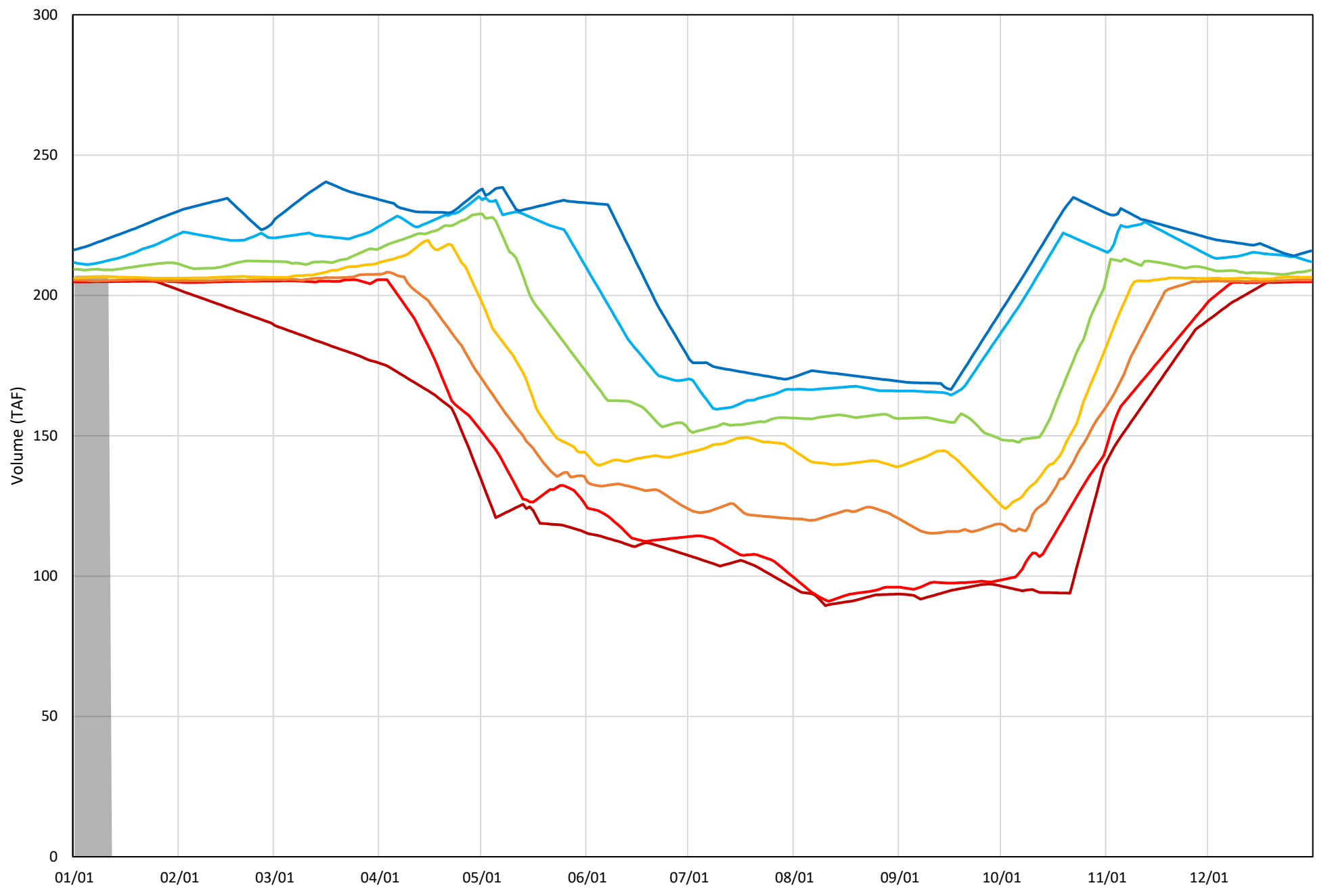
# Whiskeytown Lake Cold Water Pool Volume $\leq 56^{\circ}\text{F}$

Avg (2000-2021) 2014 2015 2016 2019 2022



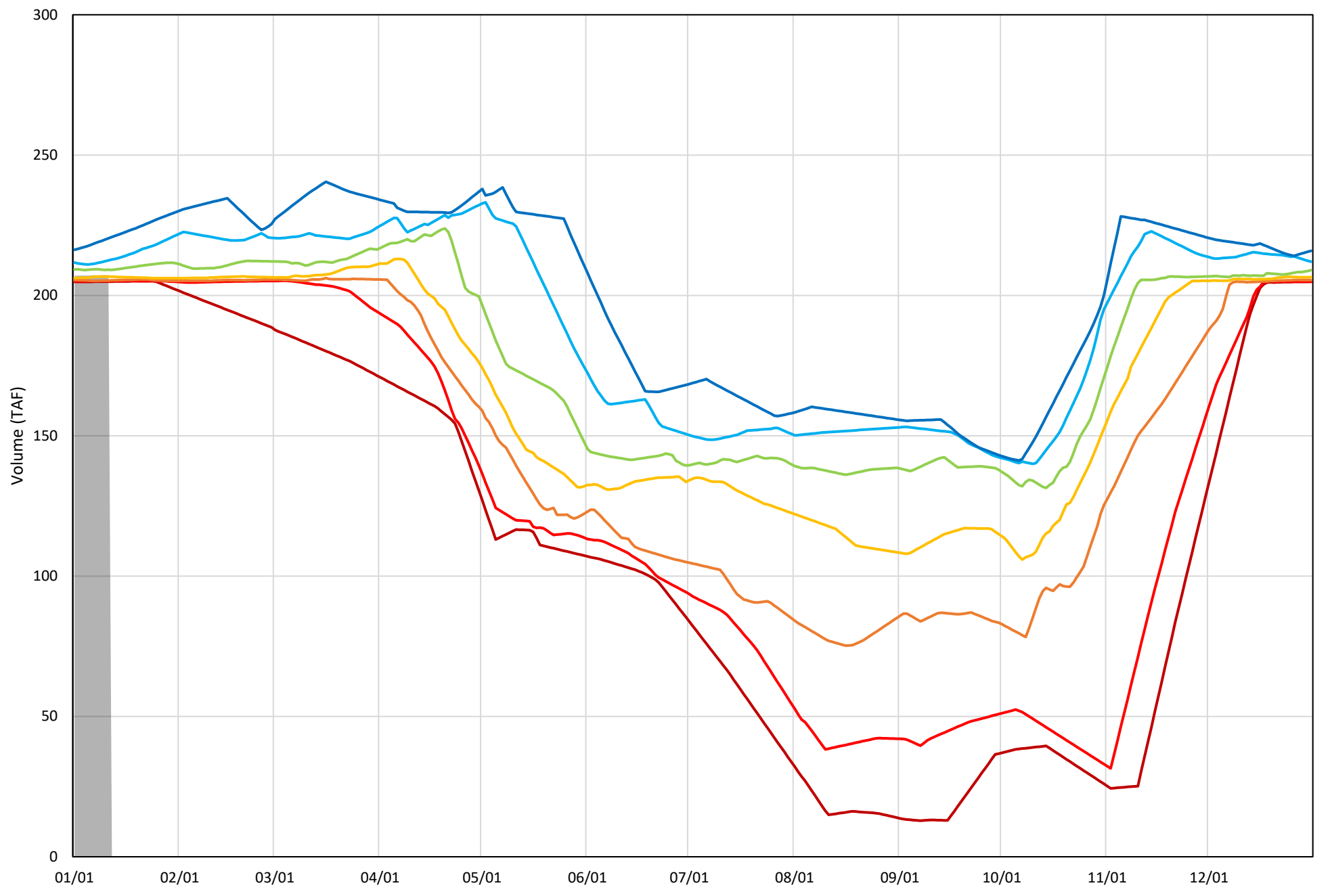
Whiskeytown Lake Cold Water Pool Volume  $\leq 60^{\circ}\text{F}$  - Percent Exceedances (2000-2021)

2022 95 90 75 50 25 10 5



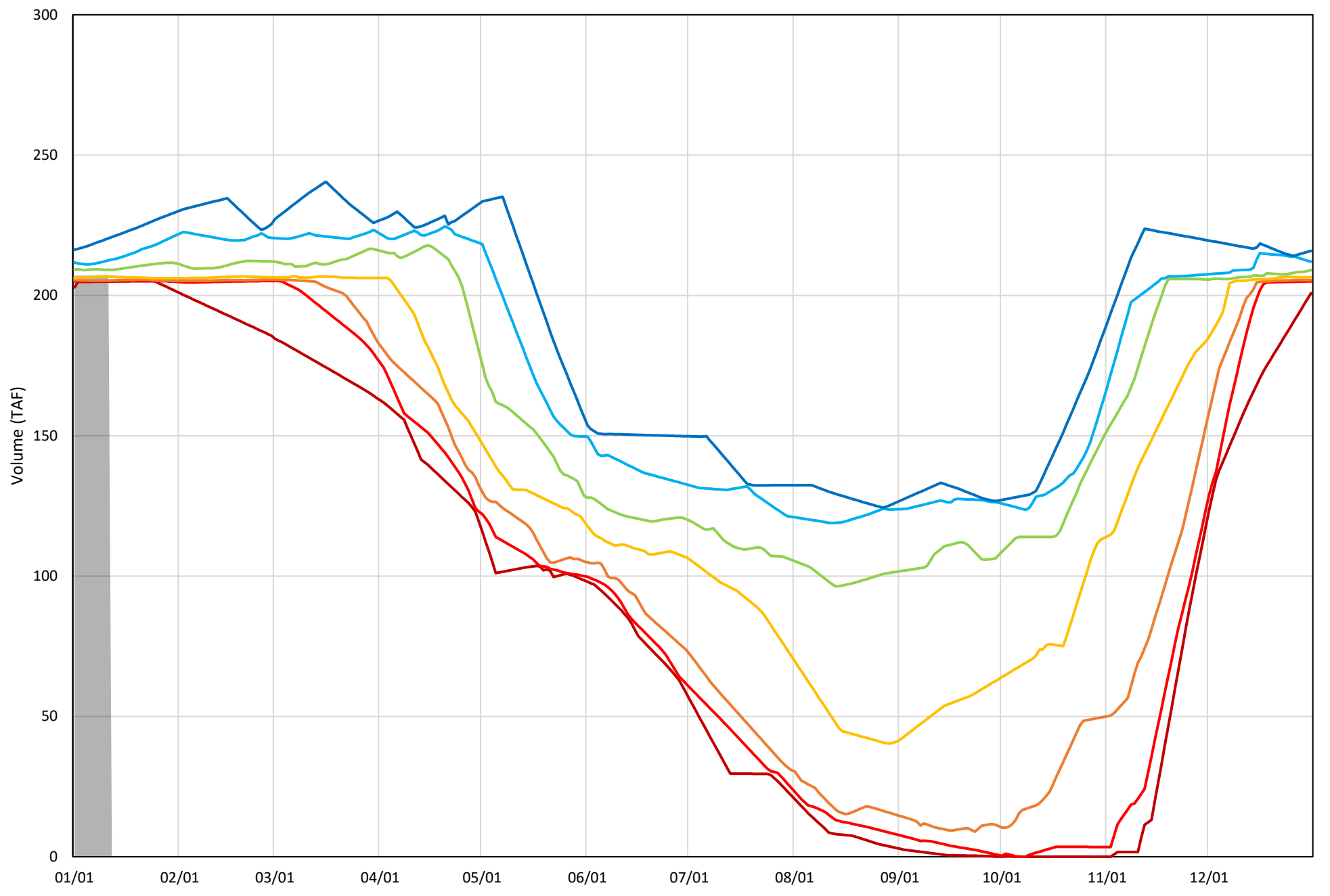
Whiskeytown Lake Cold Water Pool Volume  $\leq 58^{\circ}\text{F}$  - Percent Exceedances (2000-2021)

2022 95 90 75 50 25 10 5



Whiskeytown Lake Cold Water Pool Volume  $\leq 56^{\circ}\text{F}$  - Percent Exceedances (2000-2021)

2022 95 90 75 50 25 10 5



### Whiskeytown Cold Water Pool Comparison by Year (for Specified Date)

| Jan-12<br>2022 | $\Delta$ TAF    |                 |                 |           | % $\Delta$      |                 |                 |           |
|----------------|-----------------|-----------------|-----------------|-----------|-----------------|-----------------|-----------------|-----------|
|                | $\leq 60^\circ$ | $\leq 58^\circ$ | $\leq 56^\circ$ | Abs. Avg. | $\leq 60^\circ$ | $\leq 58^\circ$ | $\leq 56^\circ$ | Abs. Avg. |
| 2000           | -1.4            | -1.4            | -1.4            | 1.4       | -0.7            | -0.7            | -0.7            | 0.7       |
| 2001           | 4.1             | 4.1             | 4.1             | 4.1       | 2.0             | 2.0             | 2.0             | 2.0       |
| 2002           | 1.3             | 1.3             | 1.3             | 1.3       | 0.6             | 0.6             | 0.6             | 0.6       |
| 2003           | -0.6            | -0.6            | -0.6            | 0.6       | -0.3            | -0.3            | -0.3            | 0.3       |
| 2004           | -0.7            | -0.7            | -0.7            | 0.7       | -0.3            | -0.3            | -0.3            | 0.3       |
| 2005           | 1.7             | 1.7             | 1.7             | 1.7       | 0.8             | 0.8             | 0.8             | 0.8       |
| 2006           | -1.5            | -1.5            | -1.5            | 1.5       | -0.7            | -0.7            | -0.7            | 0.7       |
| 2007           | -1.9            | -1.9            | -1.9            | 1.9       | -0.9            | -0.9            | -0.9            | 0.9       |
| 2008           | -2.3            | -2.3            | -2.3            | 2.3       | -1.1            | -1.1            | -1.1            | 1.1       |
| 2009           | -0.5            | -0.5            | -0.5            | 0.5       | -0.2            | -0.2            | -0.2            | 0.2       |
| 2010           | 2.4             | 2.4             | 2.4             | 2.4       | 1.2             | 1.2             | 1.2             | 1.2       |
| 2011           | -2.0            | -2.0            | -2.0            | 2.0       | -1.0            | -1.0            | -1.0            | 1.0       |
| 2012           | -1.7            | -1.7            | -1.7            | 1.7       | -0.8            | -0.8            | -0.8            | 0.8       |
| 2013           | -0.1            | -0.1            | -0.1            | 0.1       | -0.1            | -0.1            | -0.1            | 0.1       |
| 2014           | -1.9            | -1.9            | -1.9            | 1.9       | -0.9            | -0.9            | -0.9            | 0.9       |
| 2015           | -0.4            | -0.4            | -0.4            | 0.4       | -0.2            | -0.2            | -0.2            | 0.2       |
| 2016           | 5.7             | 5.7             | 5.7             | 5.7       | 2.7             | 2.7             | 2.7             | 2.7       |
| 2017           | 14.4            | 14.4            | 14.4            | 14.4      | 7.0             | 7.0             | 7.0             | 7.0       |
| 2018           | -2.1            | -2.1            | -2.1            | 2.1       | -1.0            | -1.0            | -1.0            | 1.0       |
| 2019           | 2.8             | 2.8             | 2.8             | 2.8       | 1.4             | 1.4             | 1.4             | 1.4       |
| 2020           | -0.4            | -0.4            | -0.4            | 0.4       | -0.2            | -0.2            | -0.2            | 0.2       |
| 2021           | -2.0            | -2.0            | -2.0            | 2.0       | -1.0            | -1.0            | -1.0            | 1.0       |
| 2022           | 0.0             | 0.0             | 0.0             | 0.0       | 0.0             | 0.0             | 0.0             | 0.0       |

} Historic - Current

} (Historic - Current) / Current