

# Northern CVP Water Temperature Report

## January - 2020

Page	Description
1	- Mean Daily Water Temperature, Release Flow Rates and Air Temperatures with Monthly Averages
2	- Redding 10-Day Forecasted Air Temperatures
3	- Sacramento River Mean Daily Water Temperature, Air Temperature and 10-Day Forecasted Air Temperature Plot - Water Temperature Measuring Station Details - Temperature Control Point Details
4	- Shasta Lake Isothermobaths Plot
5	- Trinity Lake Isothermobaths Plot
6	- Whiskeytown Lake Isothermobaths Plot
x	- <a href="#">TCD Configuration</a> (External Link)



— BUREAU OF —  
RECLAMATION

All Data in this Report is Preliminary and Subject to Change

DATE	Mean Daily Water Temperatures (°F)													Mean Daily Release (CFS)			Mean Daily Air Temperatures (°F)				
	TCD <sup>1</sup>	SHD	SPP <sup>1</sup>	KWK	SAC	CCR	BSF <sup>2</sup>	JLF	BND	RDB	IGO	LWS	-----	Shasta Generation	Spring Creek P.P.	Keswick Total	RDD	BSF	RDB	LWS	
Dec	52.5	51.7	50.4	51.4	51.4	51.3	50.8	50.7	50.8	50.4	49.3	44.0	-	4672	342	5626	48.1	46.4	47.9	-	
01/01	52.3	51.5	48.8	51.1	51.1	51.0	51.0	51.2	50.9	48.4	43.7	-	4627	521	5402	48.0	48.3	48.7	-		
01/02	52.3	51.4	48.6	51.3	51.2	51.1	50.5	50.4	50.4	50.3	47.5	42.8	-	4853	362	5225	50.5	44.5	48.4	-	
01/03	52.3	51.4	49.6	51.2	51.1	51.0	50.5	50.2	50.3	49.9	47.4	42.8	-	4862	37	5102	46.5	43.5	46.7	-	
01/04	52.2	51.3	49.3	51.3	51.3	51.3	50.9	50.7	50.8	50.3	47.7	42.8	-	4748	37	5099	50.5	48.1	49.8	-	
01/05	52.0	51.1	48.0	51.3	51.2	51.1	50.7	50.5	50.7	50.4	47.2	42.6	-	4428	166	5097	46.0	43.3	46.4	-	
01/06	51.9	51.2	48.5	51.1	51.0	50.8	50.3	49.9	49.9	49.6	46.8	42.5	-	4568	228	5096	48.0	43.3	46.1	-	
01/07	51.9	51.0	48.2	50.7	50.7	50.3	49.8	49.5	49.6	49.2	46.6	42.8	-	3924	610	5065	42.0	40.9	42.0	-	
01/08	51.6	50.7	47.9	50.5	50.5	50.1	50.0	49.9	50.0	49.4	47.3	43.5	-	3917	661	5046	44.0	43.9	44.2	-	
01/09	51.6	50.6	48.9	50.5	50.5	50.3	50.1	50.1	50.2	49.8	47.1	43.4	-	4557	37	5047	47.5	46.5	48.2	-	
01/10	51.6	50.6	48.4	50.4	50.4	50.0	49.3	49.1	49.2	49.1	46.7	43.9	-	4456	37	5045	42.5	41.5	43.5	-	
01/11	51.3	50.4	48.6	50.4	50.5	50.3	50.0	49.8	49.9	49.3	47.1	43.2	-	4442	59	5045	47.5	47.5	47.3	-	
01/12	51.3	50.4	48.6	50.4	50.3	49.8	49.4	49.2	49.4	49.2	46.7	42.7	-	4446	37	5002	41.5	42.4	43.1	-	
01/13	51.1	50.2	48.2	50.2	50.2	49.8	49.3	49.1	49.2	48.6	46.8	42.7	-	4598	51	4999	45.0	47.3	47.2	-	
01/14	50.9	50.1	48.4	50.1	50.1	49.8	49.3	49.2	49.3	48.9	46.6	42.8	-	4703	37	4992	46.5	47.4	48.0	-	
01/15	50.8	50.2	48.4	49.7	49.7	49.2	48.9	48.8	49.0	48.5	46.2	42.7	-	5283	37	4992	42.0	41.2	41.5	-	
01/16	50.7	50.0	48.4	49.6	49.4	48.9	47.9	48.1	48.4	48.0	46.2	41.9	-	4766	37	4998	45.0	45.8	46.0	-	
01/17	50.6	49.9	47.9	49.6	49.4	49.0	47.2	46.9	47.0	46.8	46.5	42.1	-	4595	64	5001	42.0	42.7	43.5	-	
01/18	50.6	50.0	47.7	49.5	49.5	49.2	48.3	48.0	48.0	47.3	46.3	42.6	-	4494	72	5004	42.5	42.0	44.4	-	
01/19	50.5	50.0	48.1	49.5	49.5	49.1	48.4	48.3	48.4	47.9	46.7	42.8	-	4848	37	5000	43.5	42.5	44.5	-	
01/20	50.6	49.9	48.1	49.6	49.6	49.2	48.8	48.6	48.7	48.1	46.8	43.0	-	4886	37	4994	46.0	45.0	45.3	-	
01/21	50.4	49.8	47.1	49.6	49.4	49.3	49.1	49.1	49.3	48.7	46.5	43.0	-	4577	212	4986	46.5	48.2	48.9	-	
01/22	50.5	49.8	47.1	49.6	49.6	49.6	49.0	49.2	49.5	49.3	47.1	43.6	-	4671	147	4995	49.0	49.5	50.9	-	
01/23	50.7	49.7	47.8	49.5	49.5	49.3	49.0	49.1	49.4	49.2	46.9	44.3	-	4297	37	5002	45.5	45.6	47.2	-	
01/24	50.9	49.7	47.7	49.6	49.8	49.7	49.7	49.8	50.0	49.5	47.6	44.5	-	4576	37	4998	51.0	49.6	50.0	-	
01/25	50.9	49.7	46.8	49.7	49.8	49.7	50.1	50.4	50.7	50.4	47.6	44.6	-	4214	187	4999	52.0	50.7	52.0	-	
01/26	50.6	49.8	46.6	49.7	50.0	50.2	51.2	51.4	51.7	51.5	48.2	44.2	-	4060	523	4992	58.0	55.1	56.3	-	
01/27	50.9	49.6	46.7	49.7	50.0	50.0	50.9	51.1	51.6	51.8	48.0	44.4	-	4355	366	4994	54.0	53.6	54.1	-	
01/28	50.2	49.4	46.6	49.6	49.9	49.9	50.9	51.2	51.5	51.3	48.1	44.7	-	4087	502	5000	50.5	51.7	52.0	-	
01/29	50.1	49.5	46.6	49.5	49.8	49.7	50.4	50.7	51.0	51.1	47.5	44.0	-	3949	383	5018	54.5	51.9	53.2	-	
01/30	50.3	49.5	47.1	49.4	49.8	49.9	50.7	51.1	51.4	51.3	48.2	44.8	-	4810	111	5051	58.0	55.5	56.3	-	
01/31	50.2	49.6	47.8	49.6	49.8	49.9	50.6	50.9	51.2	51.3	48.1	44.9	-	4594	37	5043	55.5	51.4	54.0	-	
Jan	51.1	50.3	47.9	50.1	50.1	50.0	49.8	49.7	49.9	49.6	47.2	43.4	-	4522	184	5043	47.8	46.8	48.0	-	
														Total CFS	140191	5706	156329				
														Total AF	278063	11318	310072				

Legend

- ? = 1-9 hours of data missing (Average includes estimations)
- ! = 10 or more hours of data missing (Average not calculated)
- # = Station out of service
- ↑ = Record high air temperature
- ↓ = Record low air temperature
- ☐ = Monthly Averages

Notes

- 1 Temperatures are weighted averages based on individual penstock flow and temperature  
Highlighted cells in the TCD column indicate a TCD change was made on that day
- 2 Current control point (see page 3 for more details)
- 3 Column not used this month

D A T E	Redding (RDD) Daily Air Temperatures (°F)																																			
	Actual			Forecasted																																
	Previous Day			Current Day			1 Day			2 Days			3 Days			4 Days			5 Days			6 Days			7 Days			8 Days			9 Days			10 Days		
	↓	↑	Avg	↓	↑	Avg	↓	↑	Avg	↓	↑	Avg	↓	↑	Avg	↓	↑	Avg	↓	↑	Avg	↓	↑	Avg	↓	↑	Avg	↓	↑	Avg	↓	↑	Avg	↓	↑	Avg
01/01	49	69	59.0	39	59	49.0	38	63	50.5	39	59	49.0	41	55	48.0	35	56	45.5	34	59	46.5	34	57	45.5	37	62	49.5	39	58	48.5	37	58	47.5	37	54	45.5
01/02	39	57	48.0	34	62	48.0	38	60	49.0	40	56	48.0	34	56	45.0	34	61	47.5	35	57	46.0	34	54	44.0	41	58	49.5	39	56	47.5	43	55	49.0	39	54	46.5
01/03	34	67	50.5	34	64	49.0	41	57	49.0	35	55	45.0	34	61	47.5	34	56	45.0	36	54	45.0	35	54	44.5	38	54	46.0	36	55	45.5	33	53	43.0	39	54	46.5
01/04	34	59	46.5	44	57	50.5	35	54	44.5	34	61	47.5	35	55	45.0	37	54	45.5	34	55	44.5	33	51	42.0	39	53	46.0	38	54	46.0	36	54	45.0	36	52	44.0
01/05	43	58	50.5	35	55	45.0	34	62	48.0	35	56	45.5	38	53	45.5	35	54	44.5	33	53	43.0	36	51	43.5	38	53	45.5	42	55	48.5	40	57	48.5	36	55	45.5
01/06	35	57	46.0	33	62	47.5	35	57	46.0	38	53	45.5	36	54	45.0	34	54	44.0	37	53	45.0	33	50	41.5	40	52	46.0	34	52	43.0	28	51	39.5	30	55	42.5
01/07	33	63	48.0	30	57	43.5	38	53	45.5	38	55	46.5	32	55	43.5	37	52	44.5	34	50	42.0	37	51	44.0	37	55	46.0	37	52	44.5	38	53	45.5	37	56	46.5
01/08	30	54	42.0	42	50	46.0	39	53	46.0	32	53	42.5	37	52	44.5	33	51	42.0	36	51	43.5	33	50	41.5	33	53	43.0	34	50	42.0	34	53	43.5	39	57	48.0
01/09	42	46	44.0	39	54	46.5	33	53	43.0	38	52	45.0	33	50	41.5	36	51	43.5	34	51	42.5	30	48	39.0	38	48	43.0	41	52	46.5	43	55	49.0	40	61	50.5
01/10	37	58	47.5	37	53	45.0	38	52	45.0	33	49	41.0	36	50	43.0	36	51	43.5	33	49	41.0	35	49	42.0	38	50	44.0	34	49	41.5	33	53	43.0	34	57	45.5
01/11	34	51	42.5	44	54	49.0	33	51	42.0	34	50	42.0	35	50	42.5	31	46	38.5	35	47	41.0	35	49	42.0	39	52	45.5	40	56	48.0	39	59	49.0	37	59	48.0
01/12	40	55	47.5	33	50	41.5	35	51	43.0	35	50	42.5	34	48	41.0	36	47	41.5	31	47	39.0	34	51	42.5	35	57	46.0	38	54	46.0	39	55	47.0	37	58	47.5
01/13	32	51	41.5	41	50	45.5	37	49	43.0	35	46	40.5	37	47	42.0	33	47	40.0	36	50	43.0	35	56	45.5	37	57	47.0	40	58	49.0	41	62	51.5	42	63	52.5
01/14	40	50	45.0	38	49	43.5	34	47	40.5	37	46	41.5	34	47	40.5	35	48	41.5	38	56	47.0	38	56	47.0	42	52	47.0	40	57	48.5	41	60	50.5	39	61	50.0
01/15	38	55	46.5	37	48	42.5	39	47	43.0	35	47	41.0	36	49	42.5	38	58	48.0	38	58	48.0	40	55	47.5	42	58	50.0	44	60	52.0	42	63	52.5	41	64	52.5
01/16	36	48	42.0	44	46	45.0	34	47	40.5	34	51	42.5	38	57	47.5	39	57	48.0	40	54	47.0	39	57	48.0	38	57	47.5	39	61	50.0	39	62	50.5	42	62	52.0
01/17	40	50	45.0	41	46	43.5	33	54	43.5	37	59	48.0	39	57	48.0	41	53	47.0	40	56	48.0	38	58	48.0	37	58	47.5	40	62	51.0	40	61	50.5	39	60	49.5
01/18	39	45	42.0	32	53	42.5	36	59	47.5	39	58	48.5	42	52	47.0	38	56	47.0	39	58	48.5	39	60	49.5	42	60	51.0	39	58	48.5	40	61	50.5	40	59	49.5
01/19	31	54	42.5	35	59	47.0	40	57	48.5	42	52	47.0	41	56	48.5	40	59	49.5	42	60	51.0	43	60	51.5	41	59	50.0	43	56	49.5	42	58	50.0	40	58	49.0
01/20	34	53	43.5	40	56	48.0	41	50	45.5	41	53	47.0	41	60	50.5	43	61	52.0	47	57	52.0	46	59	52.5	45	58	51.5	41	59	50.0	45	58	51.5	40	58	49.0
01/21	39	53	46.0	44	51	47.5	41	54	47.5	41	61	51.0	44	60	52.0	46	56	51.0	47	59	53.0	43	58	50.5	44	62	53.0	42	63	52.5	44	65	54.5	44	65	54.5
01/22	43	50	46.5	47	54	50.5	41	61	51.0	45	59	52.0	48	59	53.5	49	59	54.0	41	56	48.5	42	56	49.0	42	61	51.5	46	59	52.5	42	59	50.5	40	61	50.5
01/23	42	56	49.0	38	57	47.5	45	59	52.0	46	59	52.5	48	60	54.0	42	55	48.5	42	57	49.5	42	58	50.0	45	66	55.5	47	65	56.0	45	64	54.5	40	62	51.0
01/24	37	54	45.5	47	58	52.5	45	59	52.0	47	60	53.5	42	58	50.0	46	58	52.0	40	60	50.0	40	65	52.5	44	67	55.5	44	66	55.0	41	65	53.0	41	63	52.0
01/25	47	55	51.0	49	58	53.5	48	61	54.5	42	59	50.5	44	58	51.0	40	62	51.0	43	66	54.5	45	68	56.5	47	67	57.0	46	62	54.0	40	62	51.0	39	59	49.0
01/26	49	55	52.0	52	60	56.0	40	58	49.0	43	60	51.5	39	64	51.5	43	69	56.0	45	70	57.5	46	72	59.0	44	68	56.0	44	67	55.5	44	66	55.0	43	66	54.5
01/27	51	65	58.0	49	58	53.5	43	57	50.0	40	63	51.5	44	69	56.5	45	70	57.5	45	70	57.5	43	63	53.0	42	59	50.5	36	62	49.0	39	63	51.0	39	70	54.5
01/28	48	60	54.0	50	57	53.5	40	63	51.5	45	69	57.0	46	71	58.5	45	70	57.5	43	60	51.5	36	55	45.5	38	60	49.0	36	62	49.0	41	65	53.0	44	61	52.5
01/29	44	57	50.5	45	63	54.0	45	69	57.0	46	68	57.0	44	65	54.5	43	55	49.0	32	53	42.5	34	58	46.0	38	62	50.0	44	65	54.5	43	65	54.0	41	66	53.5
01/30	44	65	54.5	46	67	56.5	44	69	56.5	44	65	54.5	44	54	49.0	32	53	42.5	34	58	46.0	38	61	49.5	44	68	56.0	45	65	55.0	47	64	55.5	40	66	53.0
01/31	46	70	58.0	44	71	57.5	43	67	55.0	43	52	47.5	33	52	42.5	34	57	45.5	37	64	50.5	41	69	55.0	41	66	53.5	40	61	50.5	37	63	50.0	39	63	51.0

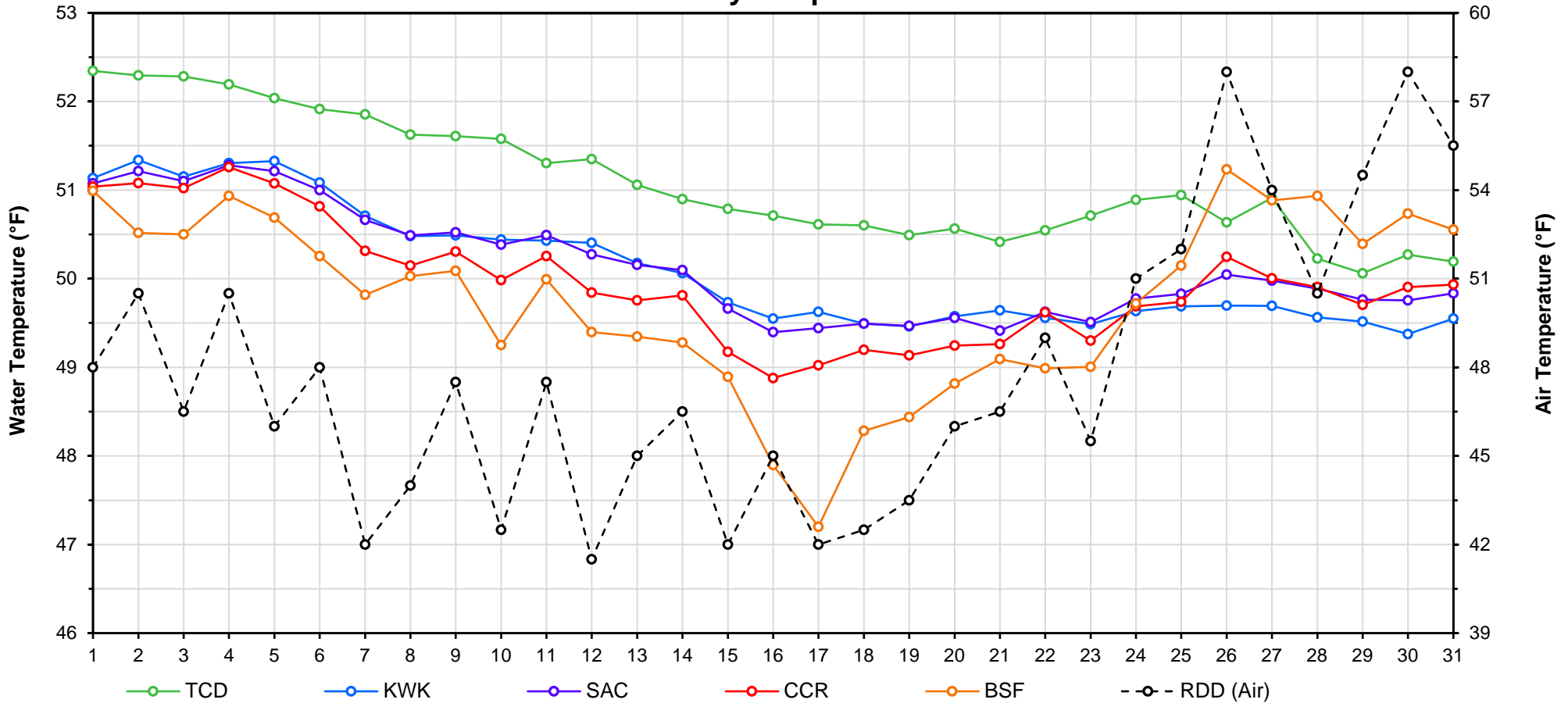
Web Links

- [10-Day Min/Max Forecast](#)
- [Previous Days Min/Max Actuals](#)

Legend

- NR = Forecasted temperatures not recorded
- 100** = Previous day actual temperatures in red and bolded indicate a record temperature for that date

# Mean Daily Temperatures



Station Details			
Code	Body of Water	Location <sup>1</sup>	CDEC Link
TCD	N/A	Shasta Power Plant	N/A
SHD	Sacramento River	0.3 miles downstream of Shasta Power Plant	<a href="#">Click Here</a>
SPP	N/A	Spring Creek Power Plant	N/A
KWK	Sacramento River	0.8 miles downstream of Keswick Dam	<a href="#">Click Here</a>
SAC	Sacramento River	4.8 miles downstream of Keswick Dam	<a href="#">Click Here</a>
CCR	Sacramento River	9.7 miles downstream of Keswick Dam	<a href="#">Click Here</a>
BSF	Sacramento River	25 miles downstream of Keswick Dam	<a href="#">Click Here</a>
JLF	Sacramento River	34 miles downstream of Keswick Dam	<a href="#">Click Here</a>
BND	Sacramento River	41 miles downstream of Keswick Dam	<a href="#">Click Here</a>
RDB	Sacramento River	58 miles downstream of Keswick Dam	<a href="#">Click Here</a>
IGO	Clear Creek	7.3 miles downstream of Whiskeytown Dam	<a href="#">Click Here</a>
LWS	Trinity River	1.1 miles downstream of Lewiston Dam	<a href="#">Click Here</a>
DGC <sup>2</sup>	Trinity River	19 miles downstream of Lewiston Dam	<a href="#">Click Here</a>
NFH <sup>3</sup>	Trinity River	38 miles downstream of Lewiston Dam	<a href="#">Click Here</a>

Temperature Control Point		
Point	Temp. (°F)	Begin Date
<b>BSF</b>	<b>56.0</b>	<b>5/15/2019</b>

## Notes

<sup>1</sup> Distances are approximate

<sup>2</sup> DGC is only reported in September

<sup>3</sup> NFH is only reported in October, November and December

### Shasta Lake Isothermobaths - 2020 (Water Temperature, in °F)



### Trinity Lake Isothermobaths - 2020 (Water Temperature, in °F)



# Whiskeytown Lake Isothermobaths - 2020 (Water Temperature, in °F)

