

Northern CVP Water Temperature Report

January - 2019

Page	Description
1	- Mean Daily Water Temperature, Release Flow Rates and Air Temperatures with Monthly Averages
2	- Redding 10-Day Forecasted Air Temperatures
3	- Sacramento River Mean Daily Water Temperature, Air Temperature and 10-Day Forecasted Air Temperature Plot - Water Temperature Measuring Station Details - Temperature Control Point Details
4	- Daily Maximum and 7DADM
5	- Shasta Lake Isothermobaths Plot
6	- Trinity Lake Isothermobaths Plot
7	- Whiskeytown Lake Isothermobaths Plot
x	- TCD Configuration (External Link)



All Data in this Report is Preliminary and Subject to Change

DATE	Mean Daily Water Temperatures (°F)													Mean Daily Release (CFS)			Mean Daily Air Temperatures (°F)				
	TCD ¹	SHD	SPP ¹	KWK	SAC	CCR	BSF ²	JLF	BND	RDB	IGO	LWS	----- ³	Shasta Generation	Spring Creek P.P.	Keswick Total	RDD	BSF	RDB	LWS	
Dec	54.0	53.4	52.4	52.8	52.5	52.3	51.4	50.9	50.6	50.6	50.2	-	-	3454	230	4012	48.0	45.4	47.6	-	
01/01	52.9	52.2	50.5	51.4	51.0	50.5	48.8	47.9	? 47.4	47.4	47.2	40.2	-	3153	44	4001	50.0	44.9	43.7	29.0	
01/02	52.7	52.2	50.6	51.2	50.8	50.6	49.2	48.3	? 47.7	47.3	47.4	40.0	-	4323	44	4090	43.5	39.4	41.1	30.7	
01/03	52.9	52.3	50.4	51.1	50.7	50.5	49.2	48.4	47.9	47.6	47.5	41.4	-	3847	44	4114	42.0	37.5	39.4	34.6	
01/04	52.9	52.3	50.0	51.3	51.0	50.9	49.4	48.8	? 48.3	47.9	47.6	41.9	-	2948	44	4077	44.5	39.6	41.8	36.8	
01/05	52.5	52.1	49.6	51.3	50.7	50.5	49.0	48.5	48.1	47.8	46.6	41.6	-	3154	44	4075	40.0	38.7	39.9	36.9	
01/06	52.3	51.9	49.4	51.3	50.3	50.6	47.7	47.8	47.7	47.8	46.2	41.4	-	3544	44	4078	45.0	45.8	46.0	34.5	
01/07	52.3	51.9	49.4	51.2	50.6	50.9	47.6	47.3	? 47.0	46.9	46.8	42.1	-	3539	44	4064	46.0	45.0	44.7	37.5	
01/08	52.2	51.8	48.6	51.1	50.7	51.0	49.5	49.4	!	-	48.6	47.7	42.7	3414	433	4073	50.5	48.0	48.7	44.1	
01/09	52.1	51.7	48.5	50.7	50.5	51.1	49.9	50.0	? 50.0	50.3	48.7	43.5	-	2068	1157	4077	55.0	55.0	54.8	46.1	
01/10	52.1	51.7	48.4	50.5	50.5	50.9	50.7	50.7	50.8	50.8	48.8	43.8	-	791	1976	4080	55.0	50.1	51.2	44.4	
01/11	52.0	51.6	48.4	50.3	50.2	50.4	49.9	49.8	49.9	50.2	47.9	43.3	-	2812	1263	4071	46.5	46.2	47.6	43.7	
01/12	51.8	51.5	48.3	50.5	50.4	50.6	49.9	49.8	49.8	49.9	48.0	43.2	-	1867	979	4077	52.5	47.2	51.5	43.6	
01/13	51.8	51.4	48.5	50.7	50.5	50.7	49.7	49.6	49.6	49.7	47.8	42.4	-	3321	409	3998	51.5	45.3	49.1	43.3	
01/14	51.8	51.2	48.5	50.6	50.3	50.4	49.1	49.0	48.9	49.0	47.1	42.2	-	3400	442	3811	58.5	44.9	47.2	37.6	
01/15	51.7	51.1	48.3	50.6	50.4	50.6	49.8	49.7	49.7	49.4	47.7	43.4	-	2363	937	3660	!	-	47.2	47.3	42.3
01/16	51.4	51.1	48.2	50.2	49.9	50.3	49.0	49.1	49.3	49.6	48.1	43.1	-	1792	1367	3499	!	-	50.4	51.3	41.9
01/17	51.1	51.0	48.3	50.1	49.9	50.3	49.9	49.8	? 49.9	50.0	48.9	43.5	-	515	1345	3484	48.0	50.2	51.9	41.3	
01/18	51.2	50.5	48.1	49.9	49.7	49.9	48.8	48.5	# -	48.9	47.9	43.1	-	236	2054	3285	46.0	44.8	46.3	38.2	
01/19	50.9	50.4	48.2	49.6	49.6	49.9	49.3	49.3	# -	49.2	48.8	43.9	-	303	1883	3154	49.0	48.8	49.9	42.3	
01/20	50.8	50.5	48.1	49.5	49.7	50.1	49.8	50.4	# -	50.5	49.7	44.5	-	854	1561	3097	52.5	51.5	52.9	44.8	
01/21	50.6	50.3	48.1	49.7	49.5	49.9	48.3	48.4	# -	49.0	47.8	43.1	-	550	1641	3092	47.5	45.8	47.8	38.4	
01/22	51.0	50.4	48.3	49.6	49.3	49.4	47.7	47.5	# -	47.9	47.0	42.5	-	2975	482	3095	53.0	46.0	47.9	35.1	
01/23	50.8	50.5	48.1	49.5	49.2	49.5	47.9	47.5	# -	47.5	47.1	42.8	-	1169	1266	3133	46.5	43.1	45.7	38.3	
01/24	50.9	50.3	48.1	49.5	49.3	49.6	48.5	48.1	# -	47.9	47.6	43.4	-	3678	546	3123	58.5	52.5	54.3	42.6	
01/25	51.1	50.2	48.2	49.6	49.4	49.7	48.6	48.5	# -	48.6	47.5	43.3	-	2074	406	3126	54.0	49.0	51.5	39.3	
01/26	50.7	50.2	48.3	49.7	49.6	49.9	49.1	48.8	# -	48.7	48.1	43.6	-	2320	261	3125	60.5	53.9	53.6	39.2	
01/27	50.6	50.0	48.2	49.9	49.9	50.3	49.8	49.8	# -	49.6	48.2	43.8	-	2353	453	3128	55.5	51.5	54.9	42.5	
01/28	50.8	50.1	48.2	49.9	49.8	50.1	49.8	49.9	# -	50.1	48.5	44.3	-	2159	383	3128	52.5	49.5	50.9	43.2	
01/29	51.0	50.0	48.2	50.0	50.1	50.7	50.6	50.8	# -	50.6	48.7	44.3	-	2211	449	3130	57.5	52.8	54.3	46.1	
01/30	50.4	49.8	48.2	50.0	50.1	50.5	50.8	51.2	# -	51.5	48.3	44.5	-	2416	493	3127	53.0	51.0	52.3	45.4	
01/31	50.4	49.7	48.0	50.2	50.3	50.8	51.1	51.5	# -	51.7	48.2	44.1	-	2194	552	3139	55.0	52.6	54.1	45.1	
Jan	51.5	51.0	48.6	50.3	50.1	50.4	49.3	49.2	-	49.1	47.9	42.9	-	2334	743	3587	50.7	47.4	48.8	40.3	
														Total CFS	72343	23046	111211				
														Total AF	143489	45711	220582				

Legend

- ? = 1-9 hours of data missing (Average includes estimations)
- ! = 10 or more hours of data missing (Average not calculated)
- # = Station out of service
- ↑ = Record high air temperature
- ↓ = Record low air temperature
- = Monthly Averages

Notes

- ¹ Temperatures are weighted averages based on individual penstock flow and temperature
- Highlighted cells in the TCD column indicate a TCD change was made on that day
- ² Current control point (see page 3 for more details)
- ³ Column not used this month

D A T E	Redding (RDD) Daily Air Temperatures (°F)																																			
	Actual			Forecasted																																
	Previous Day			Current Day			1 Day			2 Days			3 Days			4 Days			5 Days			6 Days			7 Days			8 Days			9 Days			10 Days		
	↓	↑	Avg	↓	↑	Avg	↓	↑	Avg	↓	↑	Avg	↓	↑	Avg	↓	↑	Avg	↓	↑	Avg	↓	↑	Avg	↓	↑	Avg	↓	↑	Avg	↓	↑	Avg	↓	↑	Avg
01/01	41	55	48.0	42	56	49.0	33	56	44.5	35	55	45.0	36	56	46.0	36	53	44.5	37	54	45.5	40	54	47.0	44	53	48.5	41	57	49.0	38	57	47.5	40	56	48.0
01/02	42	58	50.0	31	59	45.0	33	56	44.5	34	55	44.5	38	53	45.5	41	52	46.5	41	54	47.5	42	55	48.5	43	53	48.0	39	56	47.5	35	57	46.0	38	61	49.5
01/03	29	58	43.5	30	56	43.0	33	55	44.0	36	51	43.5	39	51	45.0	41	53	47.0	42	54	48.0	39	56	47.5	45	55	50.0	40	55	47.5	38	59	48.5	42	60	51.0
01/04	30	54	42.0	33	53	43.0	36	49	42.5	38	49	43.5	40	54	47.0	44	54	49.0	43	55	49.0	39	55	47.0	40	54	47.0	39	54	46.5	37	55	46.0	38	59	48.5
01/05	32	57	44.5	33	50	41.5	38	48	43.0	39	52	45.5	42	54	48.0	43	53	48.0	40	55	47.5	37	56	46.5	39	61	50.0	40	60	50.0	40	61	50.5	42	62	52.0
01/06	32	48	40.0	44	48	46.0	39	50	44.5	43	54	48.5	44	55	49.5	41	56	48.5	39	56	47.5	40	56	48.0	46	56	51.0	41	58	49.5	39	57	48.0	39	62	50.5
01/07	43	47	45.0	43	50	46.5	44	53	48.5	46	55	50.5	43	56	49.5	42	55	48.5	43	53	48.0	41	54	47.5	45	62	53.5	44	57	50.5	42	56	49.0	43	58	50.5
01/08	43	49	46.0	47	54	50.5	47	56	51.5	43	58	50.5	42	57	49.5	41	55	48.0	42	55	48.5	39	56	47.5	40	60	50.0	43	55	49.0	40	57	48.5	40	54	47.0
01/09	47	54	50.5	53	55	54.0	44	57	50.5	40	56	48.0	41	57	49.0	42	51	46.5	44	52	48.0	41	50	45.5	46	55	50.5	40	58	49.0	41	57	49.0	37	61	49.0
01/10	52	58	55.0	51	56	53.5	42	56	49.0	41	56	48.5	40	54	47.0	41	55	48.0	41	53	47.0	43	54	48.5	46	56	51.0	45	58	51.5	42	61	51.5	42	59	50.5
01/11	51	59	55.0	39	56	47.5	43	58	50.5	40	56	48.0	40	54	47.0	41	52	46.5	43	53	48.0	43	54	48.5	46	56	51.0	43	55	49.0	42	58	50.0	37	62	49.5
01/12	38	55	46.5	48	60	54.0	37	59	48.0	37	55	46.0	40	51	45.5	42	54	48.0	44	54	49.0	41	54	47.5	45	57	51.0	43	60	51.5	42	63	52.5	42	66	54.0
01/13	48	57	52.5	37	60	48.5	36	57	46.5	40	51	45.5	42	54	48.0	44	53	48.5	42	54	48.0	41	55	48.0	42	57	49.5	40	61	50.5	41	63	52.0	43	67	55.0
01/14	37	66	51.5	54	57	55.5	41	50	45.5	44	55	49.5	46	53	49.5	40	54	47.0	40	57	48.5	41	55	48.0	42	59	50.5	42	65	53.5	44	66	55.0	43	64	53.5
01/15	54	63	58.5	46	51	48.5	43	55	49.0	46	54	50.0	39	53	46.0	40	58	49.0	42	55	48.5	38	57	47.5	41	63	52.0	41	65	53.0	43	66	54.5	42	65	53.5
01/16	NR	NR	NR	NR	54	NR	47	55	51.0	40	53	46.5	41	58	49.5	44	57	50.5	36	58	47.0	37	61	49.0	37	65	51.0	44	65	54.5	41	65	53.0	42	65	53.5
01/17	NR	NR	NR	NR	54	NR	42	52	47.0	44	57	50.5	46	56	51.0	35	57	46.0	36	61	48.5	39	63	51.0	45	60	52.5	39	64	51.5	40	65	52.5	42	65	53.5
01/18	41	55	48.0	45	52	48.5	46	57	51.5	49	58	53.5	35	56	45.5	35	63	49.0	38	66	52.0	41	65	53.0	45	65	55.0	43	68	55.5	45	68	56.5	45	68	56.5
01/19	42	50	46.0	46	57	51.5	49	57	53.0	37	57	47.0	33	61	47.0	38	66	52.0	40	67	53.5	38	65	51.5	41	66	53.5	42	68	55.0	44	67	55.5	44	60	52.0
01/20	47	51	49.0	48	57	52.5	36	57	46.5	34	61	47.5	38	65	51.5	41	66	53.5	39	66	52.5	39	65	52.0	43	65	54.0	44	64	54.0	43	65	54.0	45	66	55.5
01/21	47	58	52.5	37	55	46.0	34	60	47.0	37	61	49.0	40	65	52.5	38	67	52.5	38	68	53.0	39	67	53.0	42	68	55.0	43	66	54.5	41	66	53.5	42	66	54.0
01/22	36	59	47.5	45	59	52.0	36	61	48.5	40	66	53.0	40	67	53.5	40	67	53.5	40	68	54.0	41	65	53.0	47	65	56.0	43	63	53.0	42	61	51.5	37	63	50.0
01/23	42	64	53.0	34	61	47.5	40	65	52.5	38	66	52.0	41	68	54.5	42	69	55.5	42	66	54.0	40	64	52.0	41	66	53.5	39	66	52.5	41	64	52.5	41	64	52.5
01/24	33	60	46.5	45	64	54.5	37	67	52.0	39	69	54.0	41	70	55.5	43	65	54.0	40	63	51.5	39	62	50.5	41	67	54.0	39	63	51.0	42	59	50.5	42	65	53.5
01/25	45	72	58.5	36	73	54.5	42	71	56.5	42	70	56.0	42	69	55.5	42	65	53.5	42	64	53.0	43	62	52.5	45	63	54.0	47	59	53.0	44	59	51.5	43	63	53.0
01/26	33	75	54.0	50	70	60.0	41	72	56.5	42	69	55.5	42	67	54.5	43	64	53.5	42	62	52.0	44	59	51.5	47	57	52.0	44	59	51.5	42	64	53.0	44	65	54.5
01/27	49	72	60.5	40	72	56.0	46	70	58.0	46	68	57.0	46	66	56.0	42	67	54.5	45	58	51.5	43	60	51.5	39	67	53.0	42	63	52.5	41	62	51.5	37	63	50.0
01/28	38	73	55.5	44	68	56.0	45	70	57.5	44	63	53.5	42	67	54.5	45	55	50.0	41	57	49.0	39	54	46.5	40	59	49.5	42	64	53.0	41	63	52.0	43	61	52.0
01/29	43	62	52.5	48	69	58.5	44	64	54.0	42	64	53.0	45	55	50.0	42	55	48.5	40	54	47.0	37	57	47.0	40	62	51.0	40	65	52.5	41	62	51.5	41	60	50.5
01/30	45	70	57.5	43	66	54.5	43	67	55.0	47	56	51.5	44	55	49.5	40	52	46.0	33	52	42.5	31	55	43.0	38	62	50.0	40	56	48.0	39	60	49.5	40	63	51.5
01/31	42	64	53.0	41	68	54.5	48	57	52.5	45	55	50.0	41	53	47.0	34	47	40.5	28	53	40.5	31	57	44.0	38	60	49.0	39	61	50.0	39	60	49.5	40	61	50.5

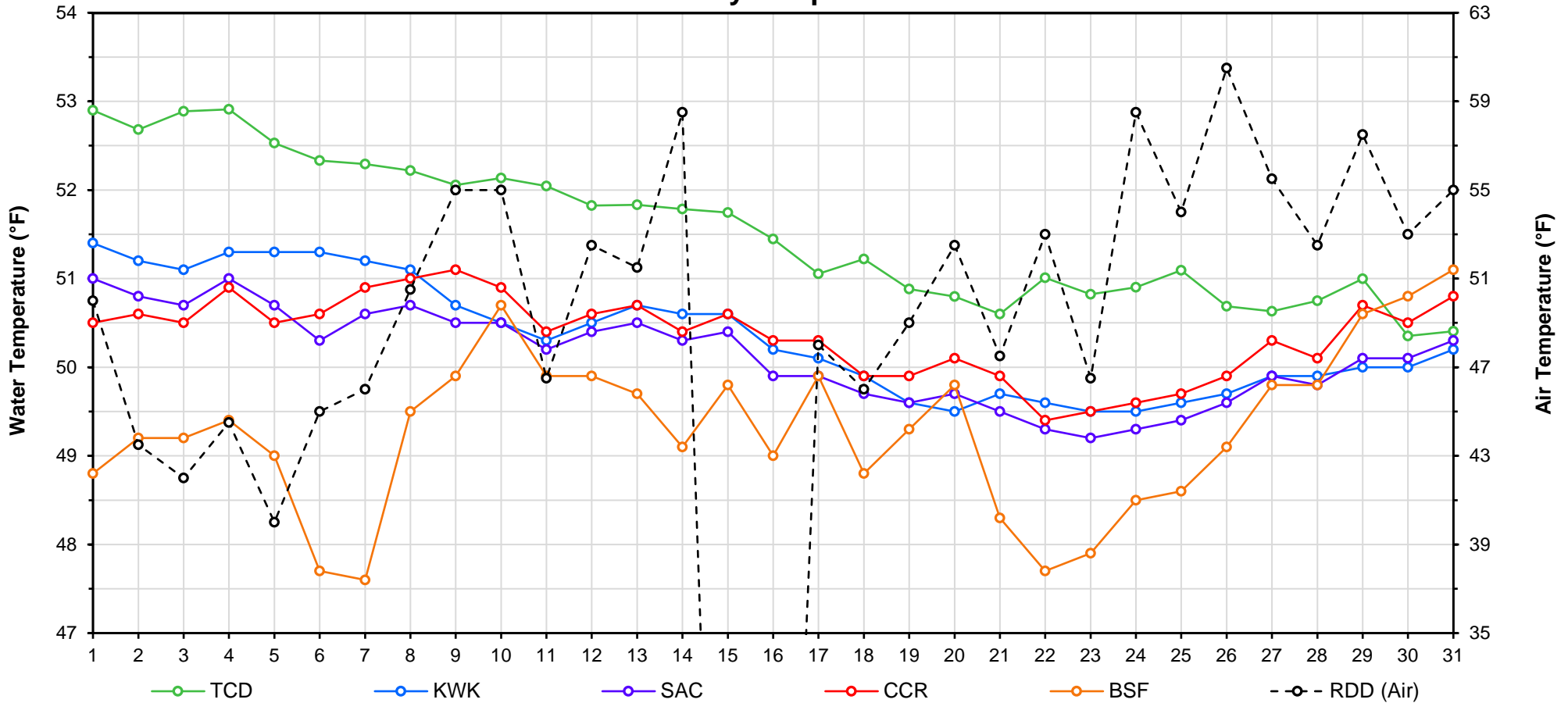
Web Links

- [10-Day Min/Max Forecast](#)
- [Previous Days Min/Max Actuals](#)

Legend

- NR = Forecasted temperatures not recorded
- 100** = Previous day actual temperatures in red and bolded indicate a record temperature for that date

Mean Daily Temperatures



Station Details			
Code	Body of Water	Location ¹	CDEC Link
TCD	N/A	Shasta Power Plant	N/A
SHD	Sacramento River	0.3 miles downstream of Shasta Power Plant	Click Here
SPP	N/A	Spring Creek Power Plant	N/A
KWK	Sacramento River	0.8 miles downstream of Keswick Dam	Click Here
SAC	Sacramento River	4.8 miles downstream of Keswick Dam	Click Here
CCR	Sacramento River	9.7 miles downstream of Keswick Dam	Click Here
BSF	Sacramento River	25 miles downstream of Keswick Dam	Click Here
JLF	Sacramento River	34 miles downstream of Keswick Dam	Click Here
BND	Sacramento River	41 miles downstream of Keswick Dam	Click Here
RDB	Sacramento River	58 miles downstream of Keswick Dam	Click Here
IGO	Clear Creek	7.3 miles downstream of Whiskeytown Dam	Click Here
LWS	Trinity River	1.1 miles downstream of Lewiston Dam	Click Here
DGC ²	Trinity River	19 miles downstream of Lewiston Dam	Click Here
NFH ³	Trinity River	38 miles downstream of Lewiston Dam	Click Here

Temperature Control Point		
Point	Temp. (°F)	Begin Date
BSF	56.0	05/25/2018

Notes

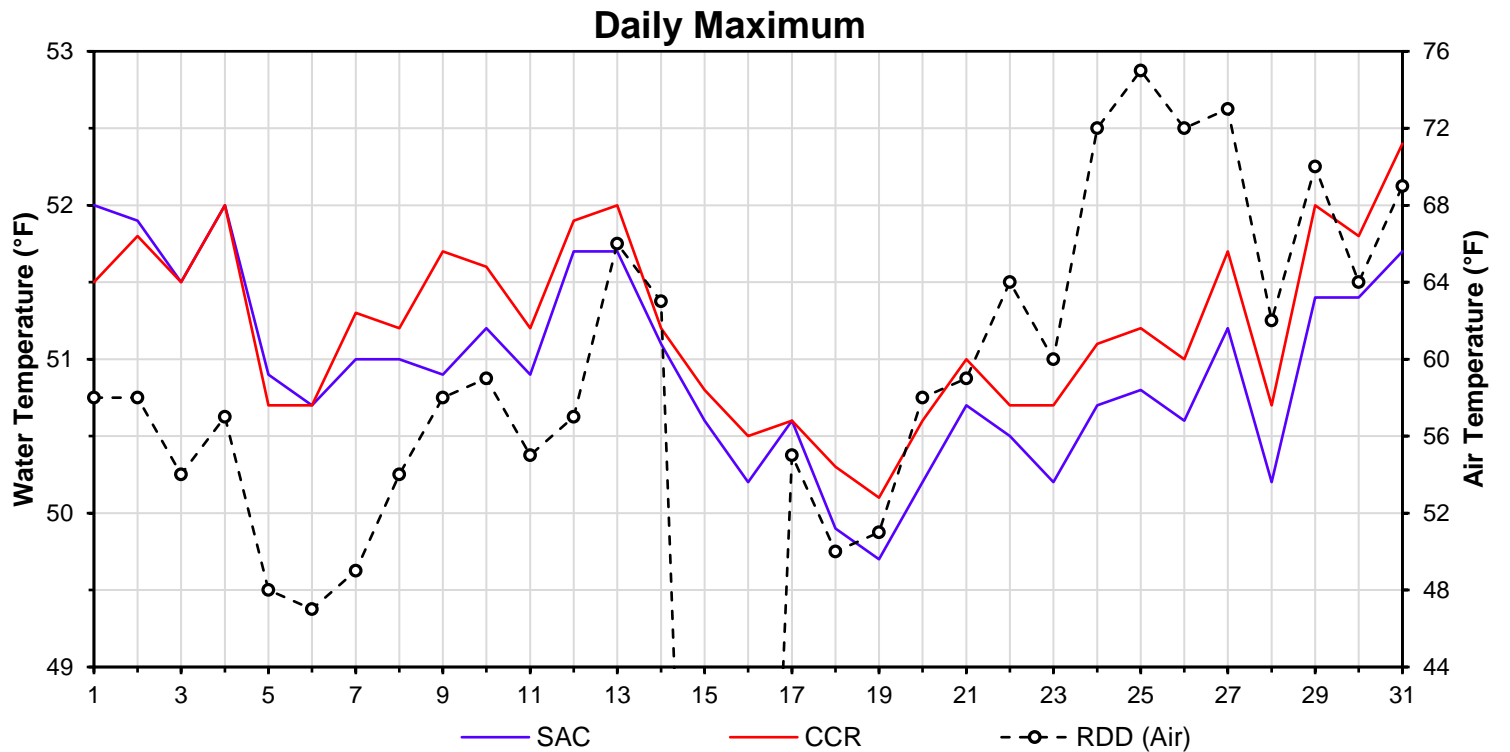
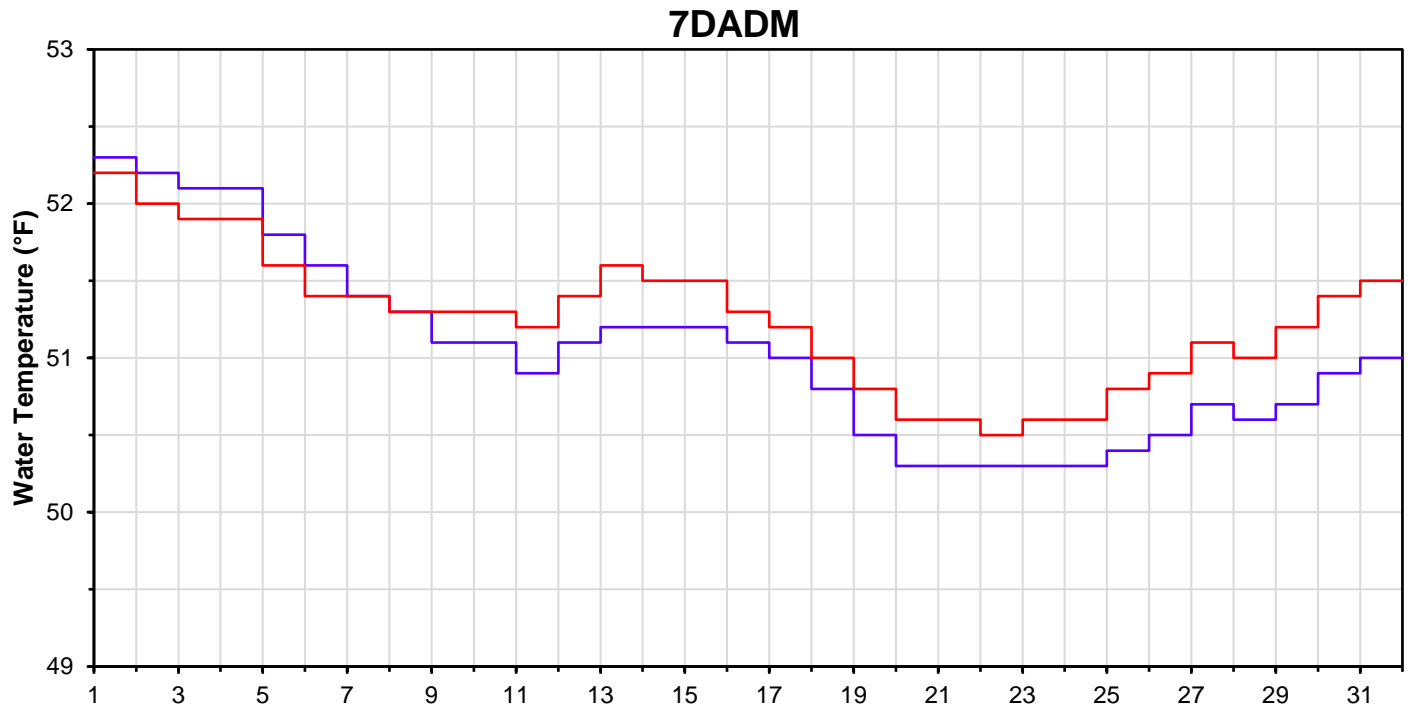
- ¹ Distances are approximate
- ² DGC is only reported in September
- ³ NFH is only reported in October, November and December

DATE	Daily Max		7DADM ¹		DAT ²
	SAC	CCR	SAC	CCR	BSF
01/01	52.0	51.5	52.3	52.2	48.8
01/02	51.9	51.8	52.2	52.0	49.2
01/03	51.5	51.5	52.1	51.9	49.2
01/04	52.0	52.0	52.1	51.9	49.4
01/05	50.9	50.7	51.8	51.6	49.0
01/06	50.7	50.7	51.6	51.4	47.7
01/07	51.0	51.3	51.4	51.4	47.6
01/08	51.0	51.2	51.3	51.3	49.5
01/09	50.9	51.7	51.1	51.3	49.9
01/10	51.2	51.6	51.1	51.3	50.7
01/11	50.9	51.2	50.9	51.2	49.9
01/12	51.7	51.9	51.1	51.4	49.9
01/13	51.7	52.0	51.2	51.6	49.7
01/14	51.1	51.2	51.2	51.5	49.1
01/15	50.6	50.8	51.2	51.5	49.8
01/16	50.2	50.5	51.1	51.3	49.0
01/17	50.6	50.6	51.0	51.2	49.9
01/18	49.9	50.3	50.8	51.0	48.8
01/19	49.7	50.1	50.5	50.8	49.3
01/20	50.2	50.6	50.3	50.6	49.8
01/21	50.7	51.0	50.3	50.6	48.3
01/22	50.5	50.7	50.3	50.5	47.7
01/23	50.2	50.7	50.3	50.6	47.9
01/24	50.7	51.1	50.3	50.6	48.5
01/25	50.8	51.2	50.4	50.8	48.6
01/26	50.6	51.0	50.5	50.9	49.1
01/27	51.2	51.7	50.7	51.1	49.8
01/28	50.2	50.7	50.6	51.0	49.8
01/29	51.4	52.0	50.7	51.2	50.6
01/30	51.4	51.8	50.9	51.4	50.8
01/31	51.7	52.4	51.0	51.5	51.1

Notes

¹ 7DADM = 7-Day Average
Daily Maximum

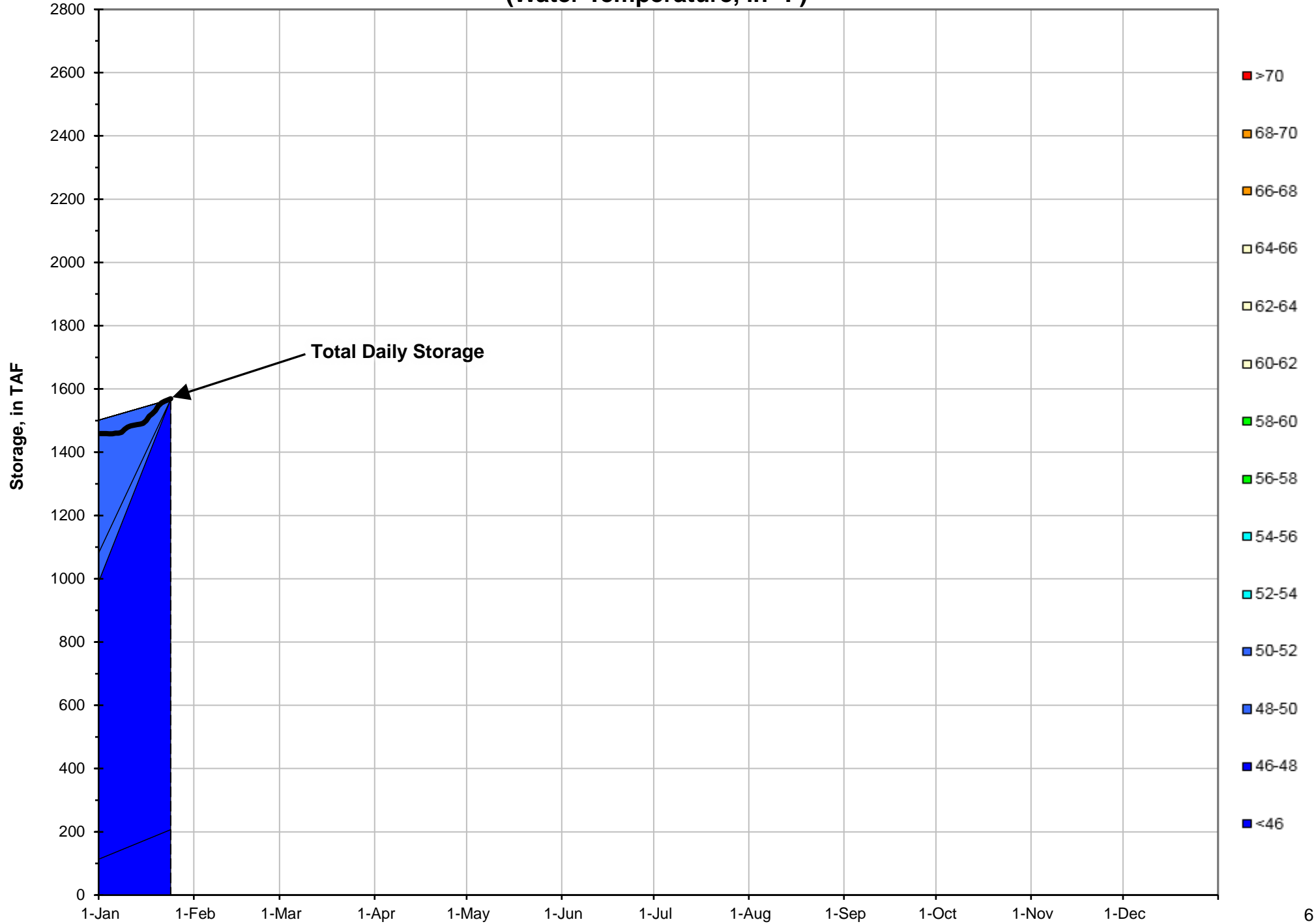
² DAT = Daily Average
Temperature



Shasta Lake Isothermobaths - 2019 (Water Temperature, in °F)



Trinity Lake Isothermobaths - 2019 (Water Temperature, in °F)



Whiskeytown Lake Isothermobaths - 2019 (Water Temperature, in °F)

