

Northern CVP Water Temperature Report

January - 2018

Page	Description
1	- Mean Daily Water Temperature, Release Flow Rates and Air Temperatures with Monthly Averages
2	- Redding 10-Day Forecasted Air Temperatures
3	- Sacramento River Mean Daily Water Temperature, Air Temperature and 10-Day Forecasted Air Temperature Plot - Water Temperature Measuring Station Details - Temperature Control Point Details
4	- Lake Shasta Isothermalbaths Plot
5	- Daily Maximum and 7DADM
x	- TCD Configuration (External Link)



All Data in this Report is Preliminary and Subject to Change

DATE	Mean Daily Water Temperatures (°F)													Mean Daily Release (CFS)			Mean Daily Air Temperatures (°F)				
	TCD ¹	SHD	SPP ¹	KWK	SAC	CCR	BSF ²	JLF	BND	RDB	IGO	LWS	----- ³	Shasta Generation	Spring Creek P.P.	Keswick Total	RDD	BSF	RDB	LWS	
Dec	52.4	51.9	51.4	51.6	51.3	51.3	50.3	49.9	49.7	49.4	48.8	42.6	-	4378	28	4444	49.0	44.0	47.3	35.9	
01/01	52.6	52.2	49.0	52.1	52.0	52.1	51.4	51.2	51.0	50.6	47.5	43.4	-	4024	21	4318	53.0	48.5	51.3	41.6	
01/02	52.6	52.0	48.7	52.1	51.8	? 51.9	51.1	51.0	50.9	50.8	47.6	43.4	-	4278	28	4128	49.5	45.3	49.5	39.9	
01/03	52.4	52.0	48.6	52.0	51.9	52.1	51.5	51.4	51.3	50.9	47.9	43.8	-	3622	75	3837	53.0	50.1	51.5	43.3	
01/04	52.4	52.0	48.7	52.0	51.9	52.1	51.9	52.1	52.1	51.8	48.1	45.0	-	3807	14	3684	52.5	52.0	52.1	50.3	
01/05	52.4	51.8	48.5	52.1	52.0	52.3	52.5	52.8	52.9	52.7	48.3	45.7	-	3488	14	3492	56.5	56.6	57.1	50.4	
01/06	52.1	51.6	48.7	52.0	52.0	52.3	52.5	52.7	53.1	53.4	47.8	44.8	-	2480	894	3478	52.0	51.7	51.8	42.3	
01/07	52.2	51.8	48.9	51.5	51.3	51.4	51.2	51.2	51.4	51.8	47.2	44.3	-	3745	65	3503	45.5	45.3	47.2	40.5	
01/08	52.4	51.7	48.7	51.4	51.3	51.5	51.5	51.3	51.3	51.2	47.8	44.5	-	2839	361	3547	50.5	49.5	49.8	43.6	
01/09	52.2	51.7	48.5	51.4	51.4	51.7	? 51.5	51.5	51.7	51.7	48.3	45.5	-	2819	464	3561	53.5	53.1	54.1	47.0	
01/10	52.0	51.5	49.1	51.3	51.2	51.3	51.3	51.3	51.6	51.6	48.0	45.0	-	3001	14	3553	48.5	49.2	49.6	42.5	
01/11	51.8	51.4	49.1	51.4	51.3	51.4	51.4	51.3	51.5	51.3	48.3	45.8	-	3588	14	3558	52.0	50.8	52.0	47.2	
01/12	51.9	51.3	48.9	51.5	51.5	51.8	51.9	51.7	51.8	51.8	48.0	45.4	-	3657	14	3556	54.0	51.7	54.1	43.0	
01/13	52.3	51.6	48.8	51.4	51.4	51.6	51.2	51.1	51.2	51.4	47.7	45.0	-	3423	14	3556	57.0	46.9	47.8	42.0	
01/14	51.8	51.4	48.9	51.3	51.3	51.4	51.1	50.9	51.1	50.9	47.8	45.3	-	2919	593	3558	49.5	46.0	46.5	43.6	
01/15	51.8	51.4	49.2	51.1	50.9	51.0	51.0	50.8	50.9	50.9	47.8	45.2	-	3062	38	3557	47.5	47.0	47.7	42.4	
01/16	51.8	51.2	49.1	51.3	51.3	51.5	51.5	51.5	51.6	51.4	48.5	46.1	-	3379	14	3538	55.5	53.0	53.6	47.8	
01/17	52.0	51.3	48.9	51.4	51.4	51.7	52.1	52.3	52.6	52.4	48.7	46.8	-	3261	39	3577	55.5	54.0	53.6	49.9	
01/18	51.5	? 51.1	48.8	51.4	51.3	51.5	51.8	51.9	52.2	52.3	48.4	46.7	-	3587	14	3780	48.5	50.9	51.2	45.8	
01/19	51.6	50.9	48.8	51.2	50.9	50.9	50.2	50.2	50.5	50.9	47.2	44.5	-	3866	14	3780	45.5	43.5	46.7	36.9	
01/20	51.7	51.0	49.0	50.9	50.7	50.7	49.3	48.8	48.8	49.0	46.9	43.7	-	3154	14	3858	44.5	40.3	43.8	35.8	
01/21	51.7	? 50.9	49.4	50.6	50.3	50.1	49.0	48.4	48.4	48.1	47.0	43.4	-	3633	15	3842	41.0	39.5	42.5	34.6	
01/22	51.5	50.7	49.1	50.5	50.3	50.3	48.6	48.4	48.4	48.2	47.4	43.6	-	3453	43	3843	46.0	45.4	47.4	37.0	
01/23	51.4	51.0	49.2	50.5	50.4	50.4	49.4	48.9	49.0	48.6	47.4	44.8	-	3409	14	3844	44.5	44.6	46.2	40.3	
01/24	51.2	? 50.6	49.0	50.6	50.4	50.4	49.8	49.6	49.6	49.1	47.7	44.8	-	3670	42	3846	45.5	47.0	47.6	40.4	
01/25	51.3	50.5	49.0	50.6	50.2	50.2	47.9	47.8	48.0	48.3	47.0	43.7	-	3554	14	3847	41.0	41.2	44.8	35.3	
01/26	51.1	? 50.7	48.9	50.3	50.2	50.3	48.6	48.2	48.2	47.8	47.4	44.0	-	3951	36	3847	45.0	44.8	45.4	36.4	
01/27	51.4	50.6	48.9	50.2	50.2	50.3	49.6	49.2	49.2	48.8	47.6	44.3	-	3678	14	3841	49.0	45.7	46.5	38.9	
01/28	51.6	50.8	48.4	50.5	50.5	50.7	49.8	49.4	49.5	49.4	47.7	44.8	-	3475	186	3845	↑ 54.5	48.7	50.8	42.0	
01/29	51.1	50.6	48.5	50.5	50.5	50.8	50.4	50.1	50.3	49.9	47.9	45.0	-	3550	93	3846	53.5	48.0	48.5	43.3	
01/30	51.0	50.5	48.8	50.6	50.5	50.8	50.4	50.1	50.2	50.1	47.5	45.1	-	3777	51	3846	52.5	47.5	49.9	44.0	
01/31	51.1	50.5	48.5	50.6	50.5	50.7	50.2	49.9	50.1	50.1	47.2	44.9	-	3857	101	3843	52.0	46.6	51.0	41.3	
Jan	51.8	51.2	48.9	51.2	51.1	51.2	50.7	50.5	50.7	50.6	47.7	44.8	-	3484	107	3733	50.0	47.9	49.4	42.2	
														Total CFS	108006	3327	115709				
														Total AF	214225	6599	229504				

Legend

- ? = 1-9 hours of data missing (Average includes estimations)
- ! = 10 or more hours of data missing (Average not calculated)
- # = Station out of service
- ↑ = Record high air temperature
- ↓ = Record low air temperature
- = Monthly Averages

Notes

- ¹ Temperatures are weighted averages based on individual penstock flow and temperature
- Highlighted cells in the TCD column indicate a TCD change was made on that day
- ² Current control point (see page 3 for more details)
- ³ Column not used this month

D A T E	Redding (RDD) Daily Air Temperatures (°F)																																			
	Actual			Forecasted																																
	Previous Day			Current Day			1 Day			2 Days			3 Days			4 Days			5 Days			6 Days			7 Days			8 Days			9 Days			10 Days		
	↓	↑	Avg	↓	↑	Avg	↓	↑	Avg	↓	↑	Avg	↓	↑	Avg	↓	↑	Avg	↓	↑	Avg	↓	↑	Avg	↓	↑	Avg	↓	↑	Avg	↓	↑	Avg	↓	↑	Avg
01/01	36	63	49.5	37	67	52.0	37	66	51.5	38	64	51.0	38	57	47.5	41	56	48.5	37	57	47.0	33	59	46.0	38	64	51.0	42	64	53.0	42	58	50.0	41	59	50.0
01/02	36	70	53.0	38	66	52.0	38	64	51.0	39	57	48.0	41	56	48.5	35	57	46.0	34	56	45.0	32	59	45.5	42	64	53.0	42	64	53.0	44	63	53.5	43	59	51.0
01/03	37	62	49.5	42	65	53.5	38	61	49.5	38	58	48.0	35	57	46.0	34	59	46.5	34	62	48.0	36	62	49.0	48	62	55.0	44	65	54.5	44	63	53.5	42	62	52.0
01/04	41	65	53.0	51	59	55.0	43	59	51.0	37	60	48.5	35	62	48.5	34	58	46.0	39	57	48.0	35	59	47.0	44	57	50.5	43	61	52.0	41	61	51.0	40	61	50.5
01/05	51	54	52.5	53	59	56.0	36	59	47.5	34	58	46.0	35	52	43.5	39	59	49.0	36	59	47.5	35	61	48.0	44	65	54.5	44	66	55.0	44	61	52.5	39	55	47.0
01/06	53	60	56.5	46	59	52.5	33	61	47.0	36	53	44.5	38	55	46.5	34	58	46.0	35	62	48.5	36	63	49.5	43	69	56.0	42	65	53.5	42	59	50.5	40	55	47.5
01/07	41	63	52.0	35	60	47.5	37	52	44.5	40	56	48.0	35	57	46.0	35	60	47.5	37	63	50.0	36	64	50.0	43	71	57.0	42	65	53.5	42	56	49.0	44	55	49.5
01/08	34	57	45.5	49	53	51.0	41	59	50.0	36	57	46.5	36	59	47.5	38	63	50.5	36	66	51.0	37	65	51.0	43	66	54.5	41	66	53.5	42	61	51.5	42	57	49.5
01/09	49	52	50.5	51	60	55.5	37	56	46.5	36	57	46.5	38	63	50.5	36	66	51.0	36	65	50.5	37	62	49.5	45	62	53.5	45	58	51.5	43	60	51.5	39	58	48.5
01/10	46	61	53.5	47	57	52.0	37	58	47.5	38	62	50.0	35	65	50.0	36	66	51.0	39	63	51.0	40	62	51.0	47	58	52.5	49	53	51.0	45	57	51.0	38	56	47.0
01/11	46	52	49.0	50	55	52.5	38	60	49.0	37	65	51.0	38	64	51.0	39	62	50.5	43	59	51.0	40	57	48.5	43	53	48.0	38	55	46.5	35	58	46.5	39	61	50.0
01/12	50	54	52.0	51	60	55.5	40	66	53.0	37	65	51.0	38	61	49.5	42	58	50.0	38	58	48.0	39	55	47.0	44	55	49.5	39	58	48.5	37	59	48.0	38	56	47.0
01/13	44	64	54.0	40	67	53.5	39	66	52.5	41	58	49.5	43	57	50.0	39	58	48.5	43	56	49.5	36	53	44.5	39	57	48.0	37	56	46.5	36	55	45.5	39	56	47.5
01/14	39	75	57.0	38	70	54.0	41	64	52.5	44	57	50.5	39	59	49.0	43	53	48.0	35	52	43.5	32	51	41.5	43	49	46.0	39	52	45.5	38	55	46.5	39	54	46.5
01/15	37	62	49.5	40	60	50.0	43	58	50.5	40	58	49.0	43	55	49.0	36	52	44.0	31	50	40.5	36	52	44.0	49	54	51.5	46	56	51.0	44	60	52.0	40	61	50.5
01/16	40	55	47.5	49	59	54.0	42	60	51.0	44	55	49.5	36	51	43.5	32	49	40.5	33	50	41.5	38	52	45.0	37	59	48.0	44	54	49.0	43	58	50.5	38	58	48.0
01/17	49	62	55.5	52	61	56.5	45	55	50.0	35	51	43.0	31	55	43.0	34	48	41.0	37	54	45.5	36	53	44.5	42	56	49.0	42	56	49.0	40	59	49.5	38	65	51.5
01/18	51	60	55.5	52	54	53.0	36	49	42.5	31	52	41.5	32	48	40.0	38	53	45.5	37	55	46.0	38	54	46.0	40	52	46.0	37	58	47.5	38	61	49.5	42	62	52.0
01/19	44	53	48.5	37	49	43.0	29	53	41.0	31	48	39.5	38	53	45.5	36	51	43.5	39	55	47.0	33	52	42.5	40	50	45.0	45	55	50.0	45	58	51.5	42	65	53.5
01/20	36	55	45.5	32	54	43.0	34	46	40.0	43	53	48.0	38	55	46.5	45	55	50.0	34	53	43.5	32	53	42.5	40	59	49.5	42	62	52.0	42	61	51.5	42	56	49.0
01/21	31	58	44.5	36	49	42.5	39	51	45.0	36	54	45.0	39	53	46.0	35	49	42.0	31	54	42.5	35	57	46.0	38	63	50.5	40	64	52.0	41	60	50.5	37	60	48.5
01/22	35	47	41.0	41	51	46.0	33	54	43.5	39	51	45.0	34	49	41.5	30	52	41.0	32	53	42.5	35	59	47.0	42	59	50.5	41	59	50.0	40	60	50.0	39	63	51.0
01/23	41	51	46.0	35	54	44.5	39	49	44.0	34	47	40.5	31	50	40.5	31	55	43.0	35	60	47.5	37	57	47.0	42	63	52.5	44	63	53.5	42	65	53.5	44	68	56.0
01/24	35	54	44.5	48	51	49.5	34	47	40.5	32	50	41.0	33	52	42.5	36	61	48.5	35	59	47.0	34	58	46.0	42	60	51.0	40	64	52.0	40	65	52.5	43	63	53.0
01/25	39	52	45.5	33	47	40.0	32	49	40.5	33	53	43.0	37	63	50.0	38	62	50.0	34	58	46.0	33	59	46.0	41	65	53.0	42	70	56.0	44	68	56.0	44	66	55.0
01/26	33	49	41.0	40	50	45.0	34	52	43.0	37	65	51.0	37	62	49.5	37	61	49.0	34	63	48.5	36	64	50.0	43	71	57.0	43	68	55.5	44	65	54.5	42	65	53.5
01/27	40	50	45.0	43	55	49.0	38	66	52.0	41	66	53.5	40	67	53.5	38	64	51.0	39	68	53.5	40	68	54.0	43	70	56.5	41	69	55.0	45	67	56.0	44	67	55.5
01/28	42	56	49.0	42	67	54.5	41	66	53.5	39	67	53.0	38	66	52.0	40	69	54.5	42	71	56.5	44	68	56.0	46	72	59.0	47	66	56.5	43	68	55.5	41	67	54.0
01/29	35	74	54.5	43	65	54.0	39	66	52.5	37	67	52.0	40	71	55.5	43	72	57.5	45	72	58.5	45	71	58.0	47	74	60.5	45	74	59.5	47	71	59.0	46	71	58.5
01/30	42	65	53.5	38	65	51.5	37	66	51.5	41	70	55.5	44	73	58.5	45	76	60.5	47	74	60.5	47	74	60.5	47	73	60.0	46	72	59.0	47	72	59.5	45	68	56.5
01/31	37	68	52.5	37	66	51.5	42	71	56.5	43	75	59.0	46	75	60.5	47	77	62.0	47	75	61.0	47	74	60.5	50	76	63.0	50	74	62.0	47	72	59.5	46	69	57.5

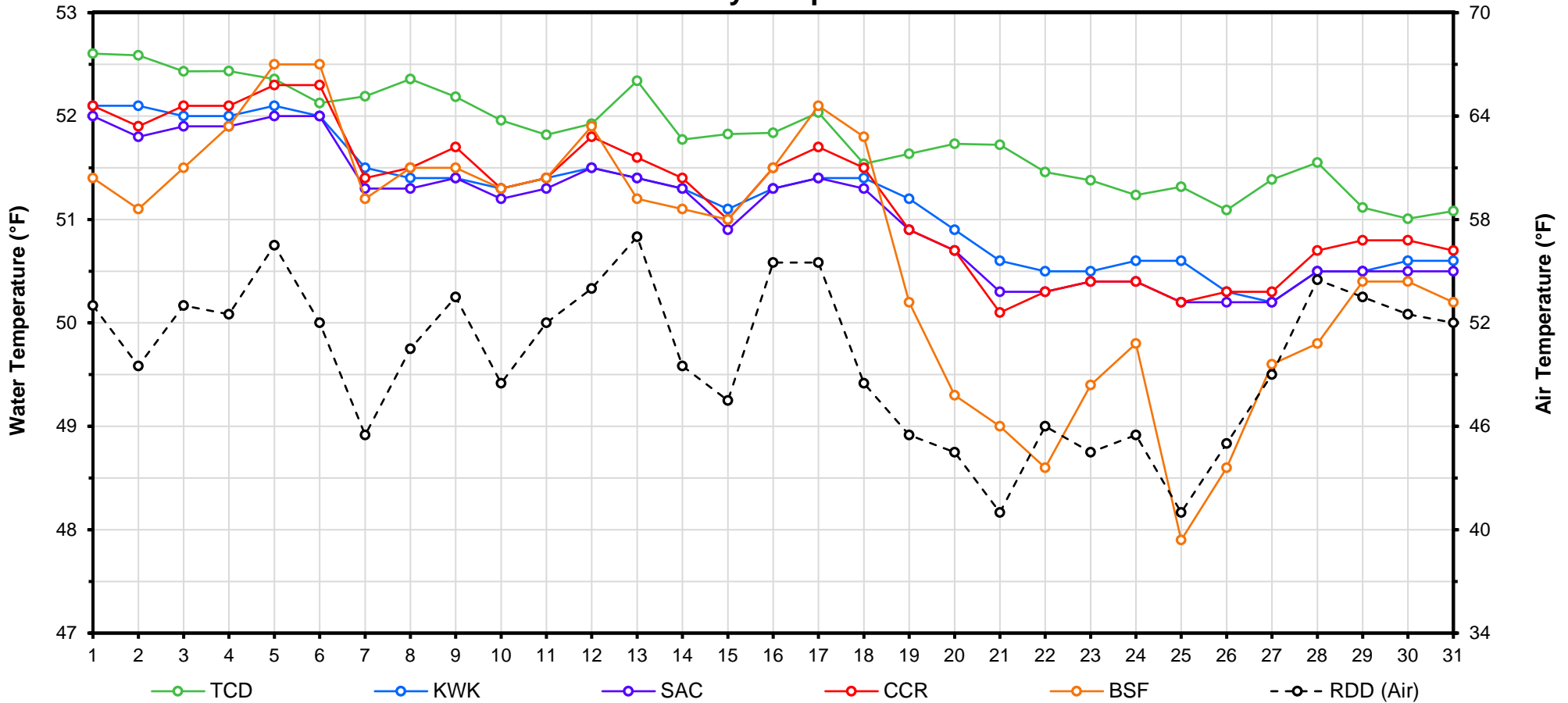
Web Links

- [10-Day Min/Max Forecast](#)
- [Previous Days Min/Max Actuals](#)

Legend

- NR = Forecasted temperatures not recorded
- 100** = Previous day actual temperatures in red and bolded indicate a record temperature for that date

Mean Daily Temperatures



Station Details			
Code	Body of Water	Location ¹	CDEC Link
TCD	N/A	Shasta Power Plant	N/A
SHD	Sacramento River	0.3 miles downstream of Shasta Power Plant	Click Here
SPP	N/A	Spring Creek Power Plant	N/A
KWK	Sacramento River	0.8 miles downstream of Keswick Dam	Click Here
SAC	Sacramento River	4.8 miles downstream of Keswick Dam	Click Here
CCR	Sacramento River	9.7 miles downstream of Keswick Dam	Click Here
BSF	Sacramento River	25 miles downstream of Keswick Dam	Click Here
JLF	Sacramento River	34 miles downstream of Keswick Dam	Click Here
BND	Sacramento River	41 miles downstream of Keswick Dam	Click Here
RDB	Sacramento River	58 miles downstream of Keswick Dam	Click Here
IGO	Clear Creek	7.3 miles downstream of Whiskeytown Dam	Click Here
LWS	Trinity River	1.1 miles downstream of Lewiston Dam	Click Here
DGC ²	Trinity River	19 miles downstream of Lewiston Dam	Click Here
NFH ³	Trinity River	38 miles downstream of Lewiston Dam	Click Here

Temperature Control Point		
Point	Temp. (°F)	Date Range
BSF	56.0	06/01/17 - Current

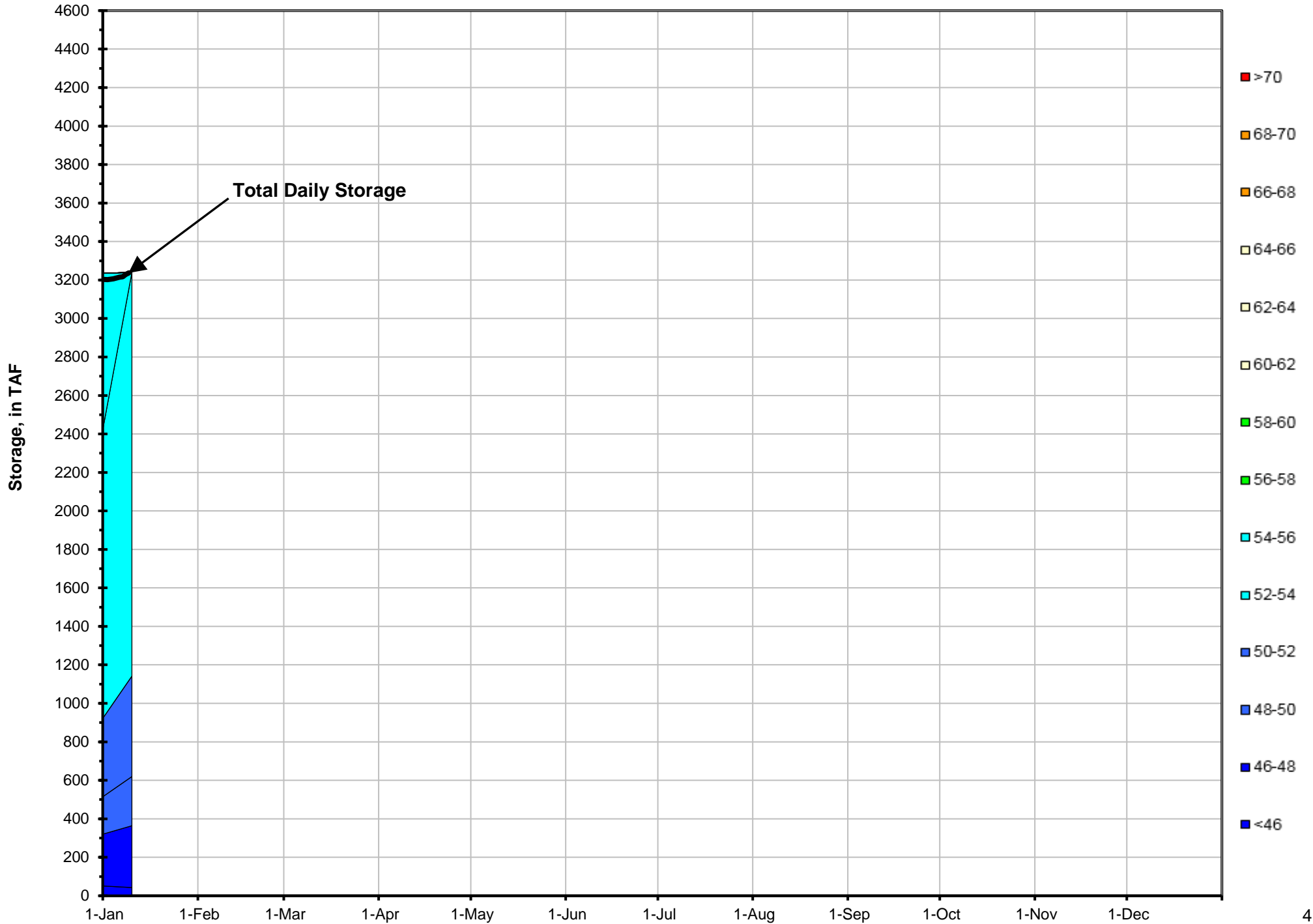
Notes

¹ Distances are approximate

² DGC is only reported in September

³ NFH is only reported in October, November and December

Lake Shasta Isothermalbaths - 2018 (Water Temperature, in °F)



DATE	Daily Max		7DADM ¹		DAT ²
	SAC	CCR	SAC	CCR	BSF
01/01	53.0	53.4	51.8	52.1	51.4
01/02	52.6	52.8	52.0	52.2	51.1
01/03	52.6	52.7	52.2	52.4	51.5
01/04	52.1	52.3	52.3	52.5	51.9
01/05	52.1	52.4	52.4	52.6	52.5
01/06	53.0	53.3	52.6	52.8	52.5
01/07	52.0	52.1	52.5	52.7	51.2
01/08	51.4	51.6	52.3	52.5	51.5
01/09	52.2	52.6	52.2	52.4	51.5
01/10	51.5	51.6	52.0	52.3	51.3
01/11	51.5	51.7	52.0	52.2	51.4
01/12	52.5	52.7	52.0	52.2	51.9
01/13	52.5	52.9	51.9	52.2	51.2
01/14	52.4	52.4	52.0	52.2	51.1
01/15	51.3	51.4	52.0	52.2	51.0
01/16	51.9	52.2	51.9	52.1	51.5
01/17	51.7	52.1	52.0	52.2	52.1
01/18	51.5	51.7	52.0	52.2	51.8
01/19	51.7	51.8	51.9	52.1	50.2
01/20	51.9	52.0	51.8	51.9	49.3
01/21	50.7	50.6	51.5	51.7	49.0
01/22	50.8	51.0	51.5	51.6	48.6
01/23	51.0	51.3	51.3	51.5	49.4
01/24	50.5	50.6	51.2	51.3	49.8
01/25	50.9	50.9	51.1	51.2	47.9
01/26	50.8	51.0	50.9	51.1	48.6
01/27	50.9	51.2	50.8	50.9	49.6
01/28	51.9	52.4	51.0	51.2	49.8
01/29	51.3	51.9	51.0	51.3	50.4
01/30	51.9	52.4	51.2	51.5	50.4
01/31	51.4	51.8	51.3	51.7	50.2

Notes

¹ 7DADM = 7-Day Average
Daily Maximum

² DAT = Daily Average
Temperature

