

Northern CVP Water Temperature Report

January - 2017

Page	Description
1	- Mean Daily Water Temperature, Release Flow Rates and Air Temperatures with Monthly Averages
2	- Redding 10-Day Forecasted Air Temperatures
3	- Sacramento River Mean Daily Water Temperature, Air Temperature and 10-Day Forecasted Air Temperature Plot - Water Temperature Measuring Station Details - Temperature Control Point Details
4	- Lake Shasta Isothermalbaths Plot
5	- Daily Maximum and 7DADM
x	- TCD Configuration (External Link)



All Data in this Report is Preliminary and Subject to Change

DATE	Mean Daily Water Temperatures (°F)													Mean Daily Release (CFS)			Mean Daily Air Temperatures (°F)				
	TCD ¹	SHD	SPP ¹	KWK	SAC	CCR	BSF ²	JLF	BND	RDB	IGO	LWS	----- ³	Shasta Generation	Spring Creek P.P.	Keswick Total	RDD	BSF	RDB	LWS	
Dec	52.2	51.6	51.4	51.0	50.7	50.9	49.1	48.5	48.4	48.2	48.2	44.4	-	5511	517	6484	45.2	42.0	44.4	35.3	
01/01	49.9	49.3	47.7	49.2	49.0	49.6	48.4	48.1	48.1	48.1	44.8	42.6	-	5765	15	6179	42.5	41.9	42.1	34.1	
01/02	49.8	49.0	47.4	48.8	48.5	49.1	47.5	47.1	47.2	47.1	44.2	42.5	-	5467	223	5978	41.0	41.7	42.6	32.1	
01/03	49.8	48.9	47.3	48.4	48.1	48.9	47.0	47.0	47.0	46.9	44.8	42.4	-	4764	602	5304	41.5	43.9	45.1	32.5	
01/04	49.5	48.9	47.3	48.2	47.3	48.6	45.5	45.4	45.5	45.9	45.1	42.4	-	3401	859	4756	43.5	46.5	47.6	34.1	
01/05	49.8	49.0	47.8	48.0	47.3	47.9	45.3	45.0	45.1	45.2	44.1	42.1	-	3865	25	4776	41.0	36.0	37.6	30.3	
01/06	49.6	48.9	47.6	47.9	47.3	48.0	44.6	43.8	43.7	43.6	43.7	41.6	-	4285	14	4792	39.0	34.7	37.0	28.0	
01/07	49.5	48.8	46.7	48.2	47.2	48.1	44.6	44.3	44.2	44.0	43.8	42.0	-	8401	683	9531	37.0	36.9	37.7	34.6	
01/08	49.3	48.7	46.5	48.3	46.8	48.4	45.4	44.5	44.4	44.4	45.7	42.1	-	11517	1255	13032	49.5	49.7	50.1	37.0	
01/09	48.9	48.4	46.4	48.3	48.1	48.8	48.1	46.7	46.8	46.8	47.1	42.4	-	9821	3051	13339	50.5	50.7	50.9	37.0	
01/10	48.7	48.2	46.1	48.0	47.9	48.5	48.1	47.6	47.6	47.8	47.5	42.3	-	9158	3570	13479	50.5	51.8	51.6	37.0	
01/11	48.8	48.1	46.2	48.0	47.9	48.3	48.0	47.6	47.7	48.1	47.4	42.3	-	12026	3354	16048	48.0	47.8	49.1	37.2	
01/12	49.3	49.5	46.0	48.8	48.5	48.6	47.9	47.6	47.5	47.4	46.0	42.1	-	18778	866	32098	47.0	44.0	43.9	35.0	
01/13	49.7	49.6	46.0	49.5	49.3	49.5	48.8	48.3	48.3	48.0	45.1	41.9	-	17022	1641	32404	50.5	43.6	46.2	32.8	
01/14	49.5	49.3	46.0	49.4	49.2	49.5	48.9	48.5	48.5	48.3	44.9	42.0	-	18722	444	32383	48.5	42.4	45.6	32.8	
01/15	49.3	49.1	46.0	49.2	49.0	49.3	48.7	48.4	48.4	48.3	44.5	42.0	-	18490	854	32056	46.5	40.5	41.6	33.5	
01/16	49.2	49.0	46.1	49.1	48.9	49.2	48.7	48.4	48.4	48.2	45.3	42.0	-	18236	190	31833	49.0	41.5	42.3	34.7	
01/17	48.9	48.7	46.1	48.9	48.8	49.0	48.7	48.5	48.5	48.4	44.9	42.3	-	18215	422	31987	43.0	41.8	41.5	36.8	
01/18	48.5	48.2	45.9	48.6	48.3	48.8	48.2	48.2	48.3	48.2	45.5	42.3	-	17665	1069	28724	45.0	44.8	45.1	37.0	
01/19	48.4	48.0	45.9	48.1	47.9	48.4	47.5	47.1	47.1	47.2	47.5	42.4	-	17799	702	25912	48.5	47.7	48.8	37.1	
01/20	48.2	47.7	45.8	47.9	47.6	48.2	47.6	47.5	47.6	47.6	47.4	42.8	-	18125	1405	25968	45.5	46.7	47.0	37.9	
01/21	48.1	47.7	45.7	48.0	47.9	48.2	47.7	47.5	47.6	47.5	47.8	43.1	-	18065	1482	26456	48.0	48.1	47.8	39.7	
01/22	47.9	47.4	45.7	47.7	47.6	47.8	47.7	47.5	47.6	47.7	47.9	43.1	-	18584	719	25898	47.0	47.4	48.0	38.2	
01/23	48.1	47.7	45.6	47.9	47.7	48.0	47.7	47.7	47.7	47.7	47.2	43.1	-	18517	857	25617	45.5	44.6	45.0	36.6	
01/24	48.2	47.8	45.5	47.9	47.8	48.1	47.8	47.7	47.8	47.9	46.4	43.1	-	17848	1272	25936	44.5	43.0	45.2	36.9	
01/25	48.2	47.8	45.5	47.8	47.6	47.9	47.4	47.2	47.3	47.3	46.5	43.2	-	17848	1272	25936	41.5	39.7	41.2	37.1	
01/26	48.1	47.7	45.4	47.8	47.7	48.0	47.7	47.6	47.6	47.6	45.9	43.0	-	17930	1322	26751	46.5	44.3	46.5	37.0	
01/27	48.1	47.7	45.4	47.8	47.6	47.9	47.6	47.5	47.6	47.6	46.2	42.8	-	18390	1116	26226	49.0	43.1	46.2	36.9	
01/28	48.0	47.5	45.4	47.7	47.6	47.9	47.5	47.4	47.5	47.5	46.9	43.0	-	18457	997	22215	46.0	41.6	44.9	37.3	
01/29	47.9	47.4	45.5	47.4	47.2	47.5	47.3	47.2	47.3	47.3	45.9	43.2	-	18487	2235	21646	48.5	41.5	44.5	37.0	
01/30	47.8	47.3	45.5	47.3	47.1	47.4	47.2	47.2	47.3	47.3	45.8	43.1	-	18146	2514	21790	46.5	42.5	45.1	37.2	
01/31	47.8	47.2	45.6	47.2	47.0	47.4	47.1	47.0	47.1	47.1	45.6	43.2	-	18566	2320	21762	44.0	41.4	44.8	36.9	
Jan	48.8	48.3	46.2	48.2	47.9	48.4	47.4	47.1	47.2	47.2	45.9	42.5	-	14270	1205	20671	45.6	43.6	44.9	35.6	
														Total CFS	442360	37350	640812				
														Total AF	877403	74082	1271024				

Legend

- ? = 1-9 hours of data missing (Average includes estimations)
- ! = 10 or more hours of data missing (Average not calculated)
- # = Station out of service
- ↑ = Record high air temperature
- ↓ = Record low air temperature
- ☐ = Monthly Averages

Notes

- ¹ Temperatures are weighted averages based on individual penstock flow and temperature
- Highlighted cells in the TCD column indicate a TCD change was made on that day
- ² Current control point (see page 3 for more details)
- ³ Column not used this month

D A T E	Redding (RDD) Daily Air Temperatures (°F)																																			
	Actual			Forecasted																																
	Previous Day			Current Day			1 Day			2 Days			3 Days			4 Days			5 Days			6 Days			7 Days			8 Days			9 Days			10 Days		
	↓	↑	Avg	↓	↑	Avg	↓	↑	Avg	↓	↑	Avg	↓	↑	Avg	↓	↑	Avg	↓	↑	Avg	↓	↑	Avg	↓	↑	Avg	↓	↑	Avg	↓	↑	Avg	↓	↑	Avg
01/01	34	61	47.5	34	46	40.0	31	44	37.5	32	46	39.0	35	48	41.5	36	49	42.5	32	50	41.0	35	51	43.0	45	49	47.0	40	51	45.5	43	55	49.0	40	55	47.5
01/02	33	52	42.5	37	39	38.0	34	40	37.0	36	50	43.0	32	51	41.5	32	49	40.5	34	49	41.5	39	52	45.5	38	48	43.0	38	53	45.5	38	54	46.0	39	54	46.5
01/03	37	45	41.0	40	47	43.5	40	51	45.5	30	49	39.5	26	47	36.5	34	48	41.0	43	52	47.5	42	51	46.5	42	50	46.0	45	52	48.5	40	54	47.0	41	57	49.0
01/04	39	44	41.5	44	50	47.0	29	47	38.0	27	48	37.5	34	48	41.0	40	52	46.0	40	52	46.0	38	49	43.5	45	49	47.0	44	53	48.5	42	55	48.5	36	57	46.5
01/05	36	51	43.5	36	47	41.5	26	48	37.0	34	48	41.0	40	55	47.5	39	52	45.5	37	51	44.0	39	52	45.5	44	48	46.0	40	47	43.5	31	54	42.5	37	58	47.5
01/06	36	46	41.0	30	48	39.0	33	46	39.5	39	57	48.0	41	51	46.0	41	52	46.5	41	53	47.0	39	52	45.5	39	52	45.5	42	53	47.5	41	53	47.0	41	56	48.5
01/07	29	49	39.0	33	46	39.5	39	55	47.0	39	51	45.0	41	52	46.5	43	52	47.5	39	54	46.5	37	53	45.0	48	59	53.5	44	58	51.0	39	60	49.5	38	56	47.0
01/08	33	41	37.0	40	56	48.0	40	51	45.5	42	51	46.5	42	52	47.0	39	52	45.5	37	53	45.0	37	54	45.5	38	58	48.0	40	58	49.0	38	58	48.0	41	57	49.0
01/09	40	59	49.5	48	51	49.5	41	53	47.0	41	52	46.5	35	52	43.5	31	53	42.0	35	54	44.5	37	55	46.0	39	58	48.5	43	59	51.0	40	57	48.5	45	58	51.5
01/10	44	57	50.5	48	52	50.0	40	52	46.0	35	53	44.0	32	56	44.0	35	58	46.5	34	61	47.5	34	59	46.5	38	61	49.5	42	58	50.0	45	56	50.5	44	57	50.5
01/11	47	54	50.5	44	50	47.0	34	53	43.5	32	54	43.0	34	56	45.0	36	60	48.0	35	59	47.0	35	56	45.5	46	55	50.5	44	53	48.5	36	54	45.0	41	59	50.0
01/12	41	55	48.0	41	53	47.0	34	56	45.0	34	59	46.5	35	60	47.5	36	62	49.0	36	55	45.5	39	55	47.0	46	55	50.5	36	53	44.5	35	52	43.5	41	52	46.5
01/13	41	53	47.0	45	56	50.5	35	58	46.5	36	60	48.0	36	60	48.0	37	54	45.5	39	54	46.5	39	54	46.5	38	51	44.5	36	53	44.5	35	54	44.5	40	56	48.0
01/14	43	58	50.5	NR	55	-	36	57	46.5	37	60	48.5	38	54	46.0	43	54	48.5	40	53	46.5	37	50	43.5	32	52	42.0	36	56	46.0	38	52	45.0	40	54	47.0
01/15	38	59	48.5	30	57	43.5	38	60	49.0	39	55	47.0	41	54	47.5	40	53	46.5	38	51	44.5	36	50	43.0	39	50	44.5	35	53	44.0	32	54	43.0	36	58	47.0
01/16	30	63	46.5	30	61	45.5	33	55	44.0	40	51	45.5	40	51	45.5	37	51	44.0	35	50	42.5	37	50	43.5	38	48	43.0	39	54	46.5	35	59	47.0	41	61	51.0
01/17	30	68	49.0	40	53	46.5	39	49	44.0	39	50	44.5	38	49	43.5	35	49	42.0	37	50	43.5	35	51	43.0	41	56	48.5	42	57	49.5	39	62	50.5	42	59	50.5
01/18	37	49	43.0	43	48	45.5	40	50	45.0	38	50	44.0	39	50	44.5	39	48	43.5	36	49	42.5	36	52	44.0	34	54	44.0	34	58	46.0	37	63	50.0	42	63	52.5
01/19	43	47	45.0	44	50	47.0	40	50	45.0	37	50	43.5	38	50	44.0	34	50	42.0	35	54	44.5	34	55	44.5	33	56	44.5	34	59	46.5	40	64	52.0	44	63	53.5
01/20	45	52	48.5	44	50	47.0	39	51	45.0	40	51	45.5	36	49	42.5	35	54	44.5	32	55	43.5	33	55	44.0	34	56	45.0	37	59	48.0	40	64	52.0	42	65	53.5
01/21	43	48	45.5	45	51	48.0	40	50	45.0	35	49	42.0	34	56	45.0	30	53	41.5	31	54	42.5	37	59	48.0	37	57	47.0	38	61	49.5	40	68	54.0	45	66	55.5
01/22	45	51	48.0	44	49	46.5	35	48	41.5	33	54	43.5	31	51	41.0	34	56	45.0	35	58	46.5	35	63	49.0	36	61	48.5	38	63	50.5	41	66	53.5	42	61	51.5
01/23	43	51	47.0	43	48	45.5	33	52	42.5	28	50	39.0	32	55	43.5	33	58	45.5	33	60	46.5	33	64	48.5	40	64	52.0	40	64	52.0	42	61	51.5	41	59	50.0
01/24	42	49	45.5	36	53	44.5	27	48	37.5	31	55	43.0	33	60	46.5	32	62	47.0	34	64	49.0	36	62	49.0	40	62	51.0	45	56	50.5	44	58	51.0	42	62	52.0
01/25	34	55	44.5	35	50	42.5	32	56	44.0	33	60	46.5	33	63	48.0	34	62	48.0	36	63	49.5	37	56	46.5	43	53	48.0	45	54	49.5	43	59	51.0	39	61	50.0
01/26	35	48	41.5	36	56	46.0	34	59	46.5	34	61	47.5	36	62	49.0	37	62	49.5	37	60	48.5	40	55	47.5	48	53	50.5	40	60	50.0	41	60	50.5	40	60	50.0
01/27	34	59	46.5	37	59	48.0	35	60	47.5	36	64	50.0	37	65	51.0	37	61	49.0	39	54	46.5	42	54	48.0	47	57	52.0	43	58	50.5	42	58	50.0	41	59	50.0
01/28	36	62	49.0	31	62	46.5	35	64	49.5	36	65	50.5	37	59	48.0	37	55	46.0	40	53	46.5	41	55	48.0	46	63	54.5	45	64	54.5	42	66	54.0	44	66	55.0
01/29	31	61	46.0	31	64	47.5	37	64	50.5	37	60	48.5	39	57	48.0	41	53	47.0	42	56	49.0	43	59	51.0	37	64	50.5	40	67	53.5	46	64	55.0	45	71	58.0
01/30	31	66	48.5	31	64	47.5	36	62	49.0	39	58	48.5	41	53	47.0	44	57	50.5	42	57	49.5	39	56	47.5	44	64	54.0	45	64	54.5	48	70	59.0	52	69	60.5
01/31	30	63	46.5	35	61	48.0	38	58	48.0	41	51	46.0	43	55	49.0	44	56	50.0	41	55	48.0	39	53	46.0	45	59	52.0	44	62	53.0	44	60	52.0	44	63	53.5

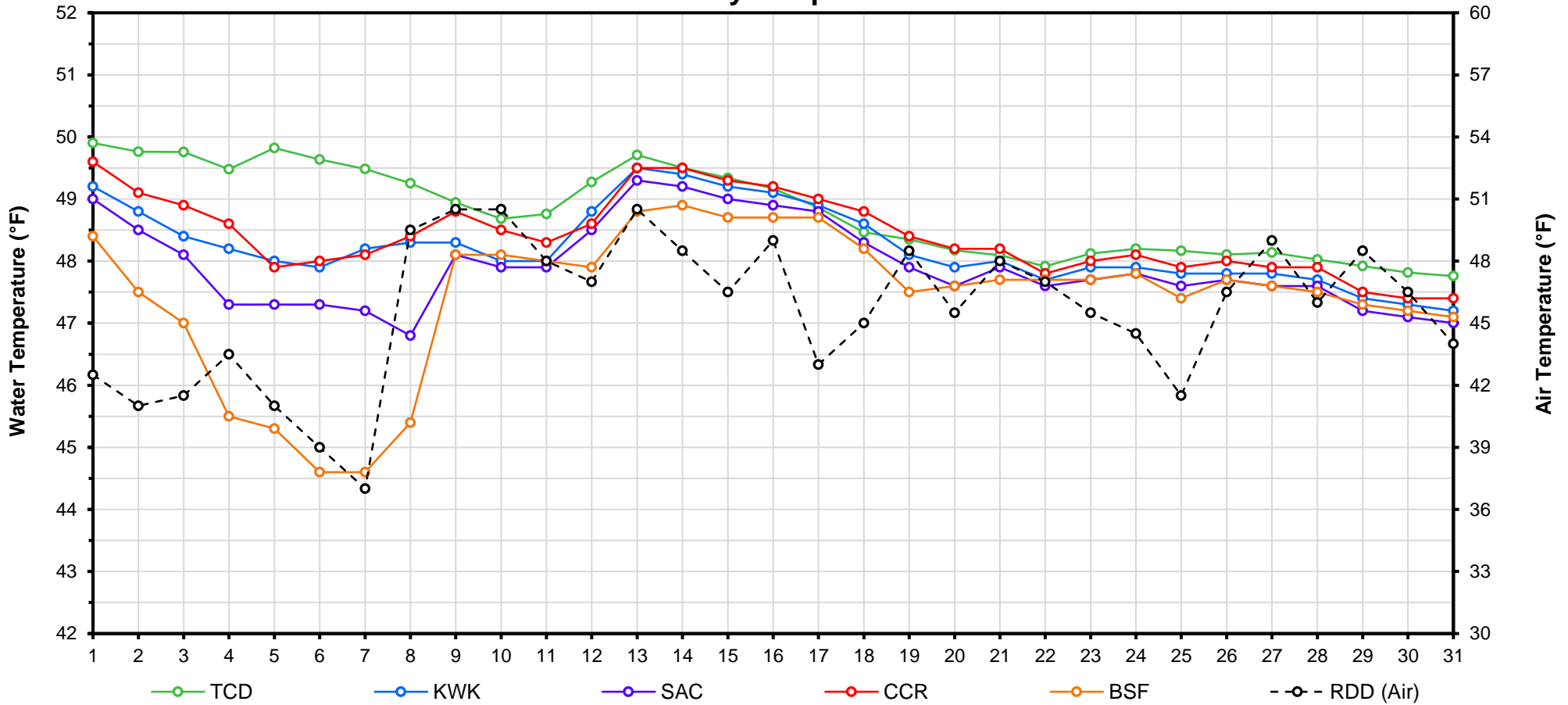
Web Links

- [10-Day Min/Max Forecast](#)
- [Previous Days Min/Max Actuals](#)

Legend

- NR = Forecasted temperatures not recorded
- 100** = Previous day actual temperatures in red and bolded indicate a record temperature for that date

Mean Daily Temperatures



Station Details			
Code	Body of Water	Location ¹	CDEC Link
TCD	N/A	Shasta Power Plant	N/A
SHD	Sacramento River	0.3 miles downstream of Shasta Power Plant	Click Here
SPP	N/A	Spring Creek Power Plant	N/A
KWK	Sacramento River	0.8 miles downstream of Keswick Dam	Click Here
SAC	Sacramento River	4.8 miles downstream of Keswick Dam	Click Here
CCR	Sacramento River	9.7 miles downstream of Keswick Dam	Click Here
BSF	Sacramento River	25 miles downstream of Keswick Dam	Click Here
JLF	Sacramento River	34 miles downstream of Keswick Dam	Click Here
BND	Sacramento River	41 miles downstream of Keswick Dam	Click Here
RDB	Sacramento River	58 miles downstream of Keswick Dam	Click Here
IGO	Clear Creek	7.3 miles downstream of Whiskeytown Dam	Click Here
LWS	Trinity River	1.1 miles downstream of Lewiston Dam	Click Here
DGC ²	Trinity River	19 miles downstream of Lewiston Dam	Click Here
NFH ³	Trinity River	38 miles downstream of Lewiston Dam	Click Here

Temperature Control Point		
Point	Temp. (°F)	Date Range
BSF	56.0	06/17/16 - Current

Notes

- ¹ Distances are approximate
- ² DGC is only reported in September
- ³ NFH is only reported in October, November and December

Lake Shasta Isothermalbaths - 2017 (Water Temperature, in °F)



DATE	Daily Max		7DADM ¹		DAT ²
	SAC	CCR	SAC	CCR	BSF
01/01	49.5	50.0	50.0	50.6	48.4
01/02	48.7	49.6	49.8	50.4	47.5
01/03	48.3	49.3	49.6	50.2	47.0
01/04	48.0	49.2	49.3	50.0	45.5
01/05	48.4	48.9	49.0	49.8	45.3
01/06	48.2	49.4	48.7	49.6	44.6
01/07	47.6	49.2	48.4	49.4	44.6
01/08	48.1	49.0	48.2	49.2	45.4
01/09	48.4	49.0	48.1	49.1	48.1
01/10	48.3	48.7	48.1	49.1	48.1
01/11	48.2	48.7	48.2	49.0	48.0
01/12	49.1	49.2	48.3	49.0	47.9
01/13	49.6	49.8	48.5	49.1	48.8
01/14	49.5	49.8	48.7	49.2	48.9
01/15	49.2	49.6	48.9	49.3	48.7
01/16	49.2	49.4	49.0	49.3	48.7
01/17	48.9	49.2	49.1	49.4	48.7
01/18	48.6	49.0	49.2	49.4	48.2
01/19	48.3	48.8	49.0	49.4	47.5
01/20	48.1	48.7	48.8	49.2	47.6
01/21	48.0	48.3	48.6	49.0	47.7
01/22	47.7	47.9	48.4	48.8	47.7
01/23	47.9	48.2	48.2	48.6	47.7
01/24	48.1	48.5	48.1	48.5	47.8
01/25	47.8	48.1	48.0	48.4	47.4
01/26	48.0	48.4	47.9	48.3	47.7
01/27	47.9	48.2	47.9	48.2	47.6
01/28	47.9	48.3	47.9	48.2	47.5
01/29	47.5	47.9	47.9	48.2	47.3
01/30	47.4	47.8	47.8	48.2	47.2
01/31	47.2	47.6	47.7	48.0	47.1

Notes

¹ 7DADM = 7-Day Average
Daily Maximum

² DAT = Daily Average
Temperature

