

# Northern CVP Water Temperature Report

## March - 2025

Page	Description
2	- Mean Daily Water Temperature, Release Flow Rates and Air Temperatures with Monthly Averages
3	- Sacramento River Mean Daily Water Temperature Plot
4	- Trinity River Mean Daily Water Temperature Plot
5	- Shasta Lake Isothermobaths & Cold Water Pool Statistics
14	- Trinity Lake Isothermobaths & Cold Water Pool Statistics
23	- Whiskeytown Lake Isothermobaths & Cold Water Pool Statistics
x	- <a href="#">TCD Configuration</a> (External Link)



— BUREAU OF —  
RECLAMATION

All Data in this Report is Preliminary and Subject to Change

DATE	Mean Daily Water Temperatures (°F)													Mean Daily Release (CFS)			Mean Daily Air Temperatures (°F)		
	TCD <sup>1</sup>	SHD	SPP <sup>1</sup>	KWK	SAC	CCR <sup>2</sup>	BSF	BND	RDB	IGO	LWS	DGC	NFH	Shasta Generation	Spring Creek P.P.	Keswick Total	RDD	BSF	RDB
Feb	48.7	48.1	45.7	48.2	48.5	48.5	48.5	48.5	48.9	46.8	44.4	44.3	44.7	12426	987	27209	50.7	48.2	50.2
03/01	47.5	46.8	47.6	47.5	48.0	48.4	49.7	50.6	51.5	47.5	44.6	45.3	45.9	5945	472	6350	56.5	55.1	57.6
03/02	47.4	46.6	36.8	47.6	48.0	48.2	50.2	50.6	51.3	47.5	44.7	45.6	46.3	6157	11	6162	47.5	49.2	49.7
03/03	47.5	46.7	39.8	#	47.7	48.0	49.3	49.7	50.6	46.9	44.6	45.3	45.7	6385	14	6050	48.5	47.4	48.2
03/04	47.4	46.7	47.4	#	47.5	47.6	49.1	50.0	50.8	47.2	44.5	45.3	45.9	5572	407	6037	52.5	51.1	52.0
03/05	47.7	46.8	36.7	46.9	47.5	47.8	48.9	49.3	50.1	47.2	44.5	45.5	46.3	6388	11	6074	52.5	49.6	50.9
03/06	47.6	46.8	37.0	47.0	47.5	47.8	49.1	49.7	50.5	47.0	44.3	45.2	45.5	5969	11	6136	52.0	49.8	51.5
03/07	47.6	? 46.9	36.8	47.2	47.6	47.9	? 48.8	49.4	50.4	46.8	44.2	44.9	45.2	6359	11	6195	52.5	49.3	51.1
03/08	47.5	46.9	36.9	47.1	47.7	48.0	48.9	49.3	50.1	46.9	44.3	44.8	45.2	6696	11	6072	50.0	47.5	50.2
03/09	47.4	? 46.9	? 37.0	? 47.2	? 47.8	? 48.1	? 49.1	? 49.6	? 50.4	? 47.1	? 44.5	? 45.0	? 45.8	6628	11	6049	51.5	49.4	52.5
03/10	47.5	46.8	48.1	47.3	47.8	48.0	49.3	50.0	50.8	47.3	44.7	45.3	46.0	5995	400	5978	55.5	51.4	54.4
03/11	47.5	46.7	39.7	47.2	47.8	48.1	49.3	49.9	50.8	47.7	44.7	45.4	46.0	6000	14	6278	53.0	51.7	54.8
03/12	46.9	46.3	39.6	47.3	47.7	47.8	49.2	50.1	50.7	47.4	44.7	45.5	46.1	5880	13	6288	49.5	52.0	51.8
03/13	47.0	46.6	47.9	47.1	47.6	47.8	48.5	48.7	49.5	47.2	44.5	45.2	45.6	5557	433	6251	48.5	47.8	48.8
03/14																			
03/15																			
03/16																			
03/17																			
03/18																			
03/19																			
03/20																			
03/21																			
03/22																			
03/23																			
03/24																			
03/25																			
03/26																			
03/27																			
03/28																			
03/29																			
03/30																			
03/31																			
Mar	47.4	46.7	40.9	47.2	47.7	47.9	49.2	49.8	50.6	47.2	44.5	45.2	45.8	6118	140	6148	51.5	50.1	51.8

Total CFS	79531	1819	79920
Total AF	157746	3608	158518

**Legend**

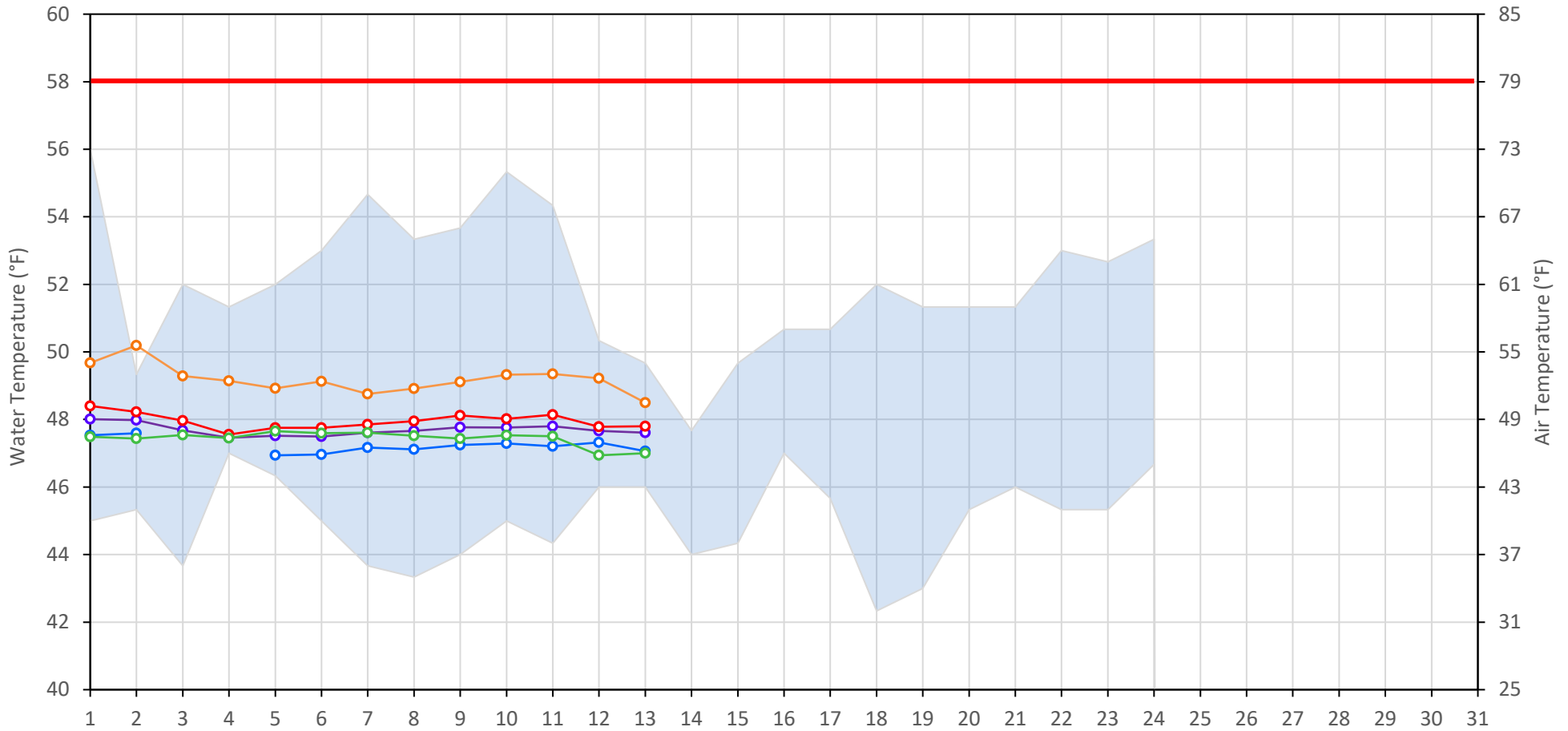
**Notes**

- ? = 1-9 hours of data missing (Average includes estimations)
- ! = 10 or more hours of data missing (Average not calculated)
- # = Station out of service
- ↑ = Record high air temperature
- ↓ = Record low air temperature
- = Monthly Averages

- <sup>1</sup> Temperatures are weighted averages based on individual penstock flow and temperature
- Highlighted cells in the TCD column indicate a TCD change was made on that day
- <sup>2</sup> Current Clear Creek River control point (see page 3 for more details)

### Sacramento River Mean Daily Temperatures

Redding Air (Observed and Forecasted) KWK SAC CCR BSF TCD



Station Details			
Code	Body of Water	Location <sup>1</sup>	CDEC Link
TCD	N/A	Shasta Power Plant	N/A
SHD	Sacramento River	0.3 miles downstream of Shasta Power Plant	<a href="#">Click Here</a>
SPP	N/A	Spring Creek Power Plant	N/A
KWK	Sacramento River	0.8 miles downstream of Keswick Dam	<a href="#">Click Here</a>
SAC	Sacramento River	4.8 miles downstream of Keswick Dam	<a href="#">Click Here</a>
CCR	Sacramento River	9.7 miles downstream of Keswick Dam	<a href="#">Click Here</a>
BSF	Sacramento River	25 miles downstream of Keswick Dam	<a href="#">Click Here</a>
JLF	Sacramento River	34 miles downstream of Keswick Dam	<a href="#">Click Here</a>
BND	Sacramento River	41 miles downstream of Keswick Dam	<a href="#">Click Here</a>
RDB	Sacramento River	58 miles downstream of Keswick Dam	<a href="#">Click Here</a>
IGO	Clear Creek	7.3 miles downstream of Whiskeytown Dam	<a href="#">Click Here</a>

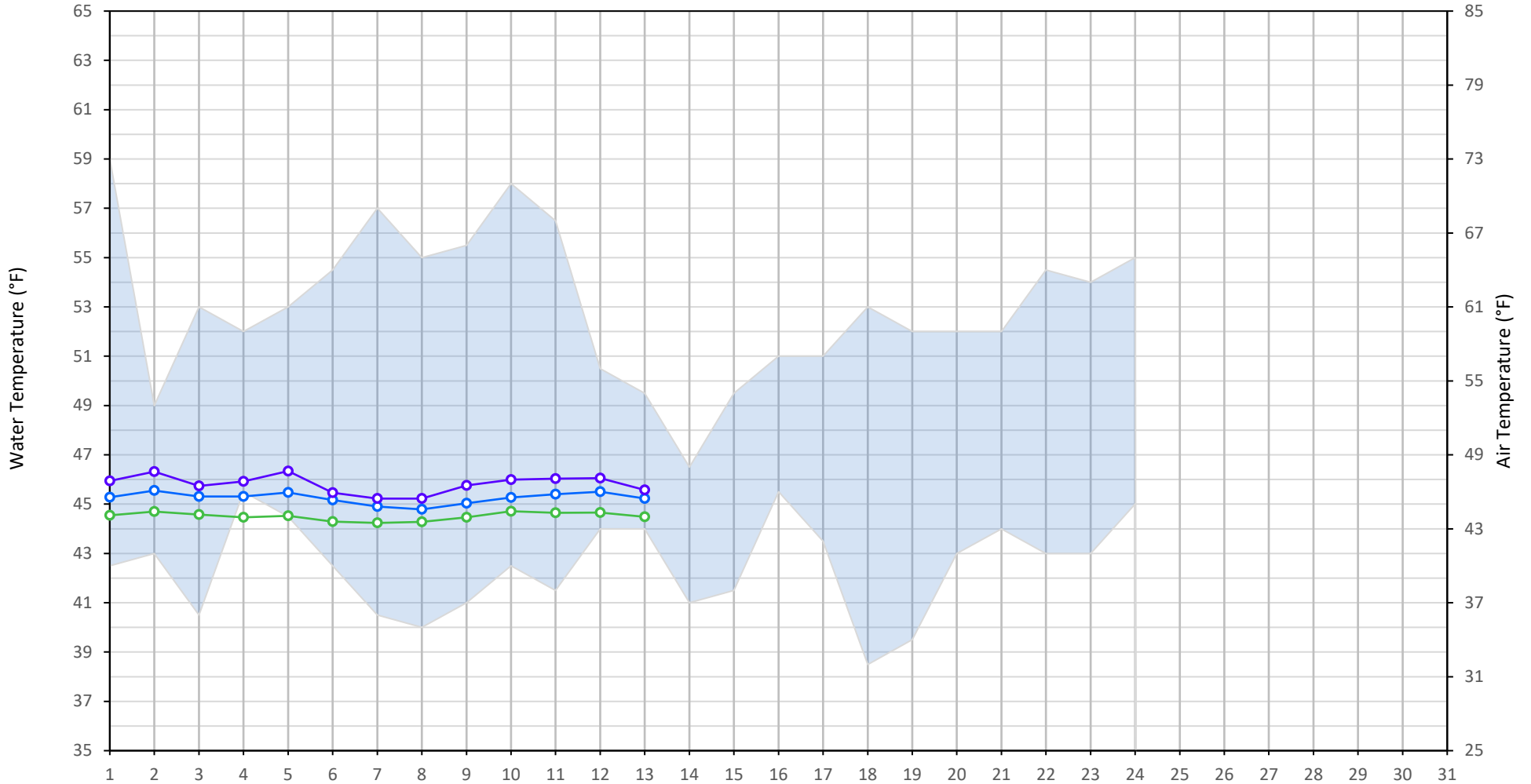
Water Right Temperature Control Points				
River	Point	Temp. (°F)	Begin Date	End Date
Sacramento	CCR	53.5	05/24/2024	TBD
Sacramento	CCR	58.0	03/01/2025	TBD

Notes

<sup>1</sup> Distances are approximate

# Trinity River Mean Daily Temperatures

Redding Air (Observed and Forecasted) LWS DGC NFH



Station Details			
Code	Body of Water	Location <sup>1</sup>	CDEC Link
LWS	Trinity River	1.1 miles downstream of Lewiston Dam	<a href="#">Click Here</a>
DGC	Trinity River	19 miles downstream of Lewiston Dam	<a href="#">Click Here</a>
NFH	Trinity River	38 miles downstream of Lewiston Dam	<a href="#">Click Here</a>

Water Right Temperature Control Points				
River	Point	Temp. (°F)	Begin Date	End Date
Trinity	DGC	56	Sep-15	Oct-01
Trinity	NFH	56	Oct-01	Dec-31

**Notes**

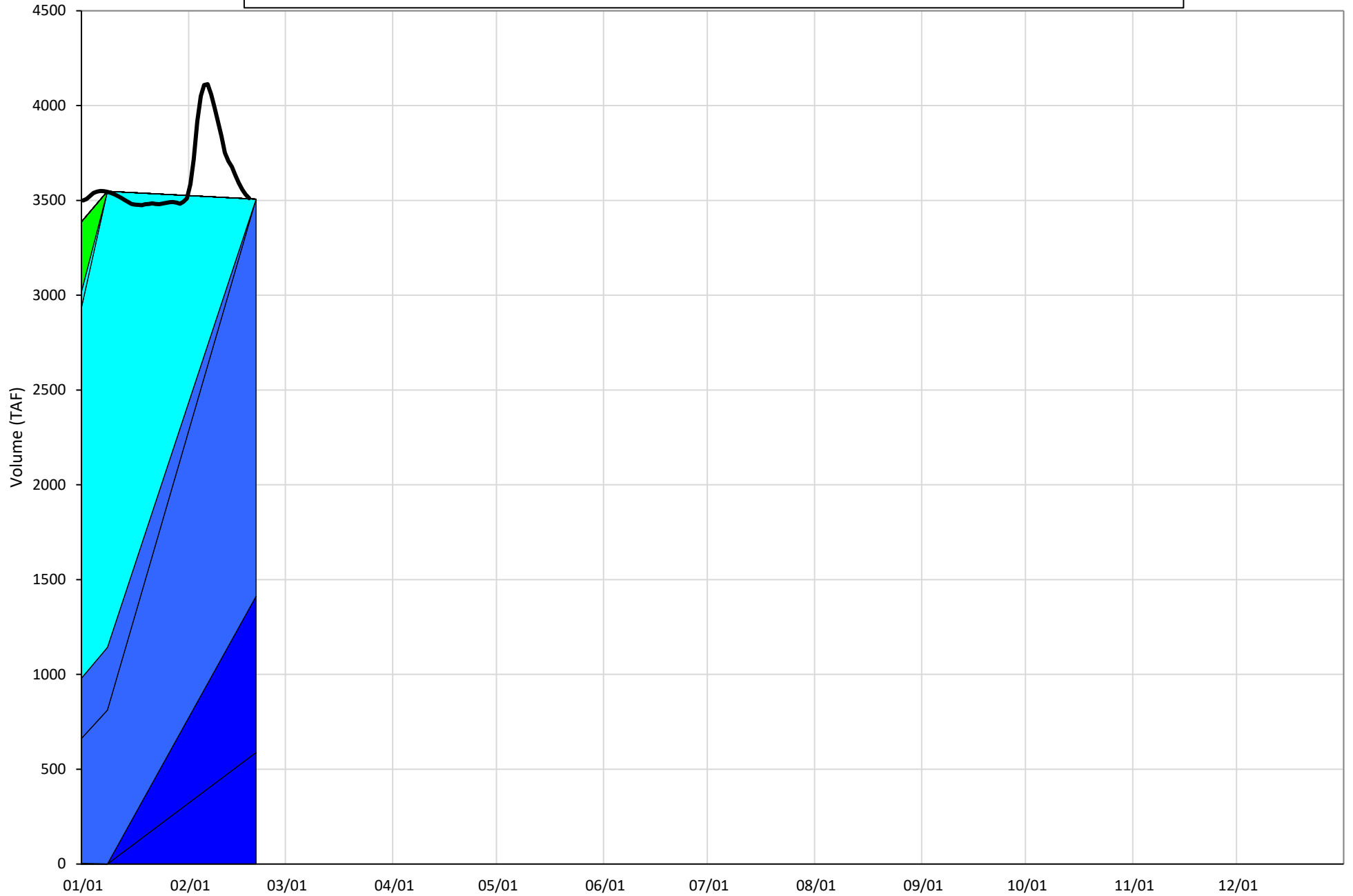
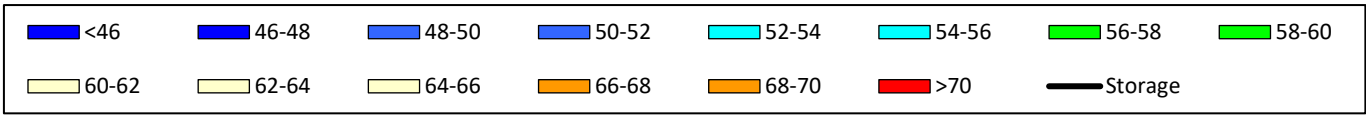
<sup>1</sup> Distances are approximate

# Shasta Lake Isothermobaths & Cold Water Pool Statistics

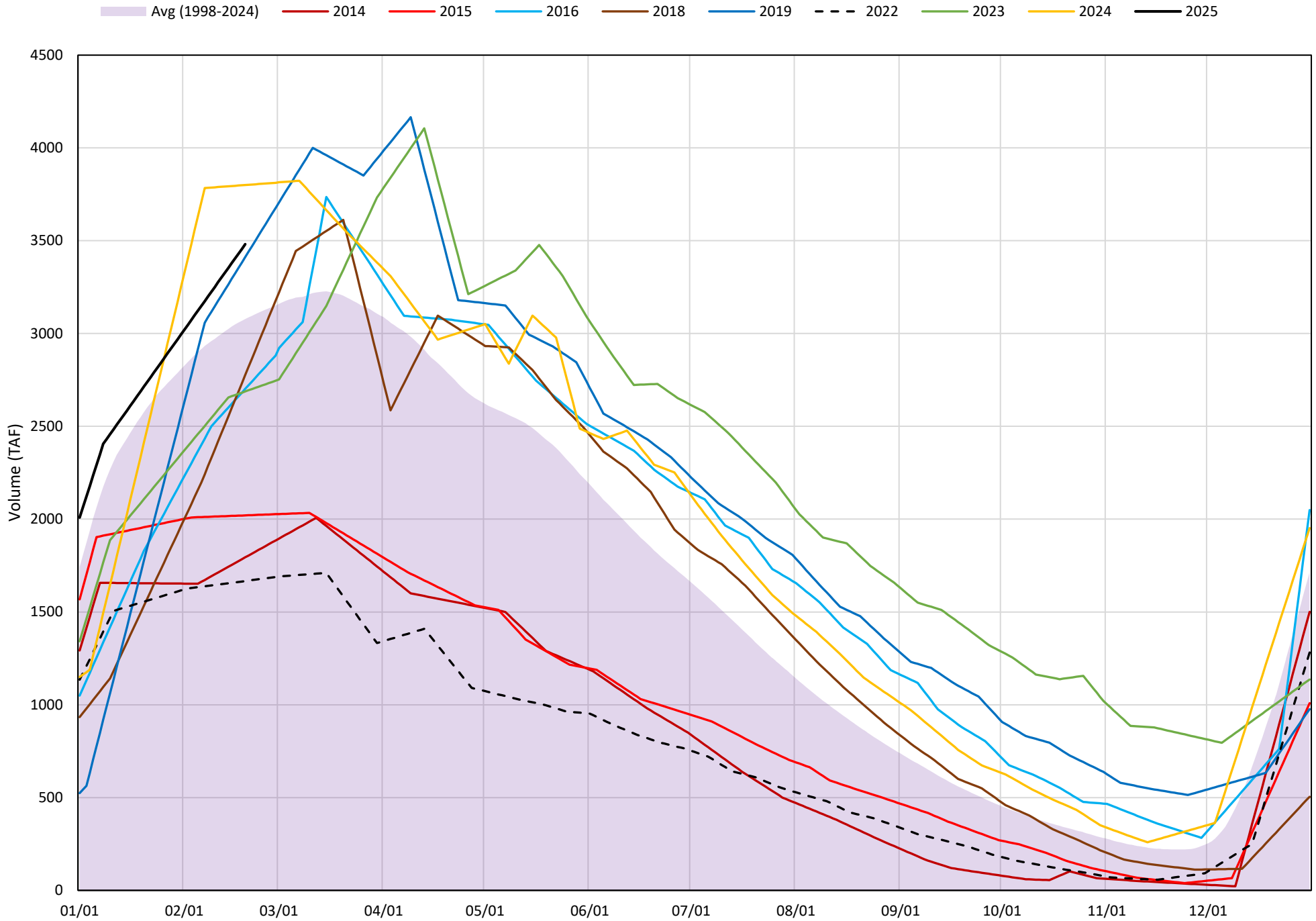
## 2025

Page	Description
6	- Shasta Lake Isothermobaths Plot
7	- Shasta Lake Cold Water Pool Volume $\leq 52^{\circ}\text{F}$
8	- Shasta Lake Cold Water Pool Volume $\leq 50^{\circ}\text{F}$
9	- Shasta Lake Cold Water Pool Volume $\leq 48^{\circ}\text{F}$
10	- Shasta Lake Cold Water Pool Volume $\leq 52^{\circ}\text{F}$ - Percent Exceedances
11	- Shasta Lake Cold Water Pool Volume $\leq 50^{\circ}\text{F}$ - Percent Exceedances
12	- Shasta Lake Cold Water Pool Volume $\leq 48^{\circ}\text{F}$ - Percent Exceedances
13	- Shasta Lake Cold Water Pool Comparison by Year

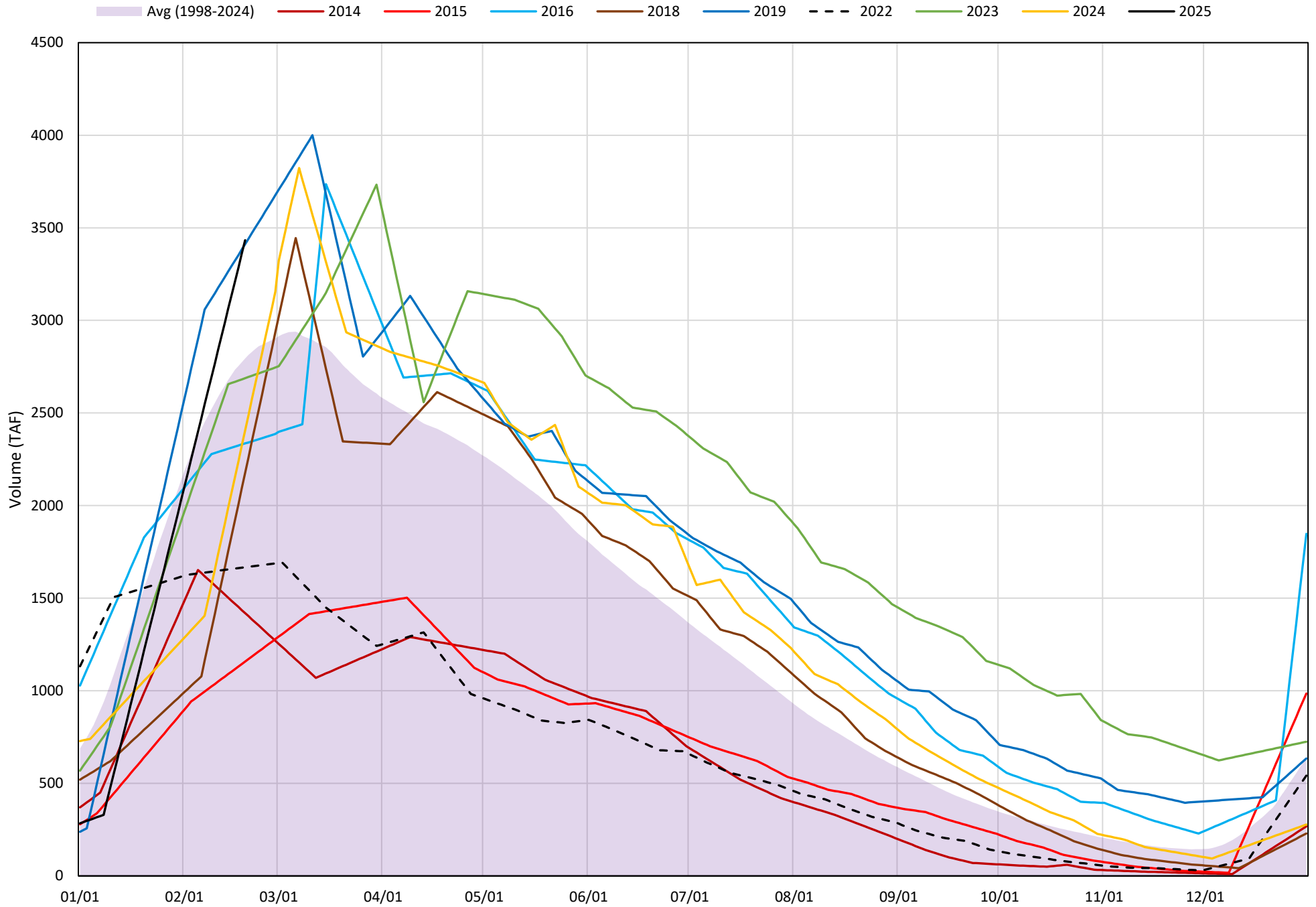
### Shasta Lake Isothermobaths Plot - 2025



# Shasta Lake Cold Water Pool Volume $\leq 52^{\circ}\text{F}$

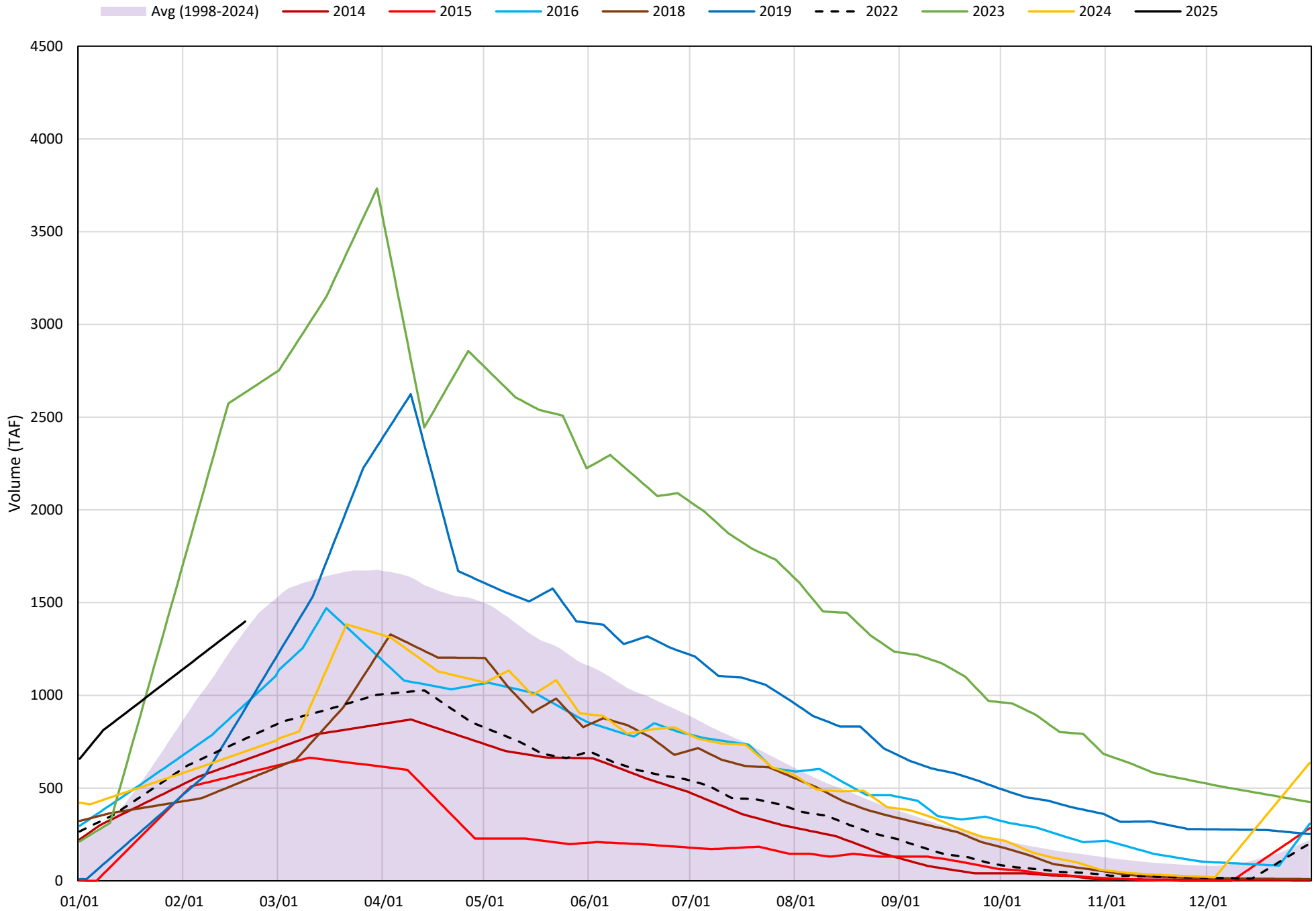


# Shasta Lake Cold Water Pool Volume $\leq 50^{\circ}\text{F}$



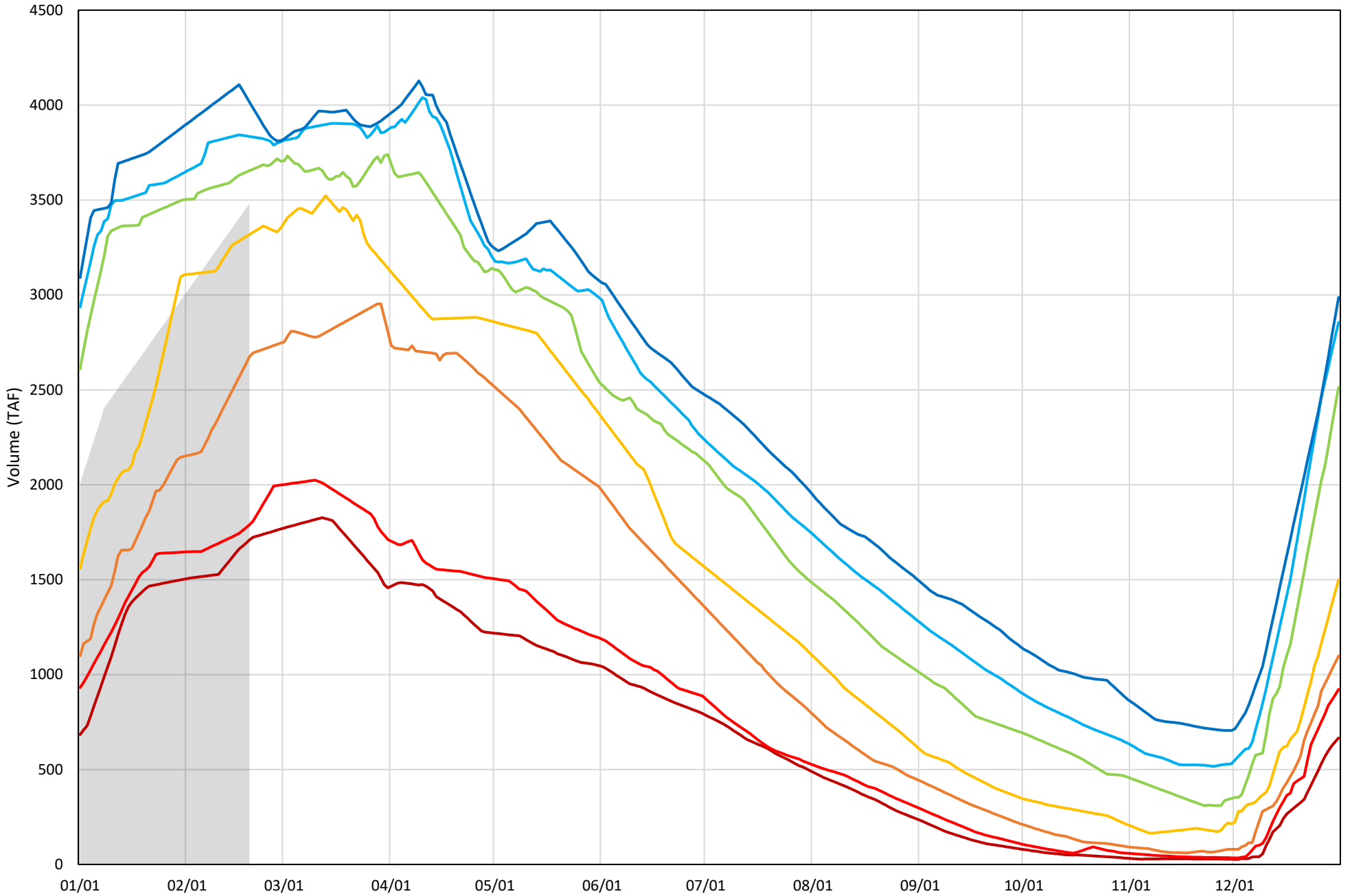


# Shasta Lake Cold Water Pool Volume $\leq 48^{\circ}\text{F}$



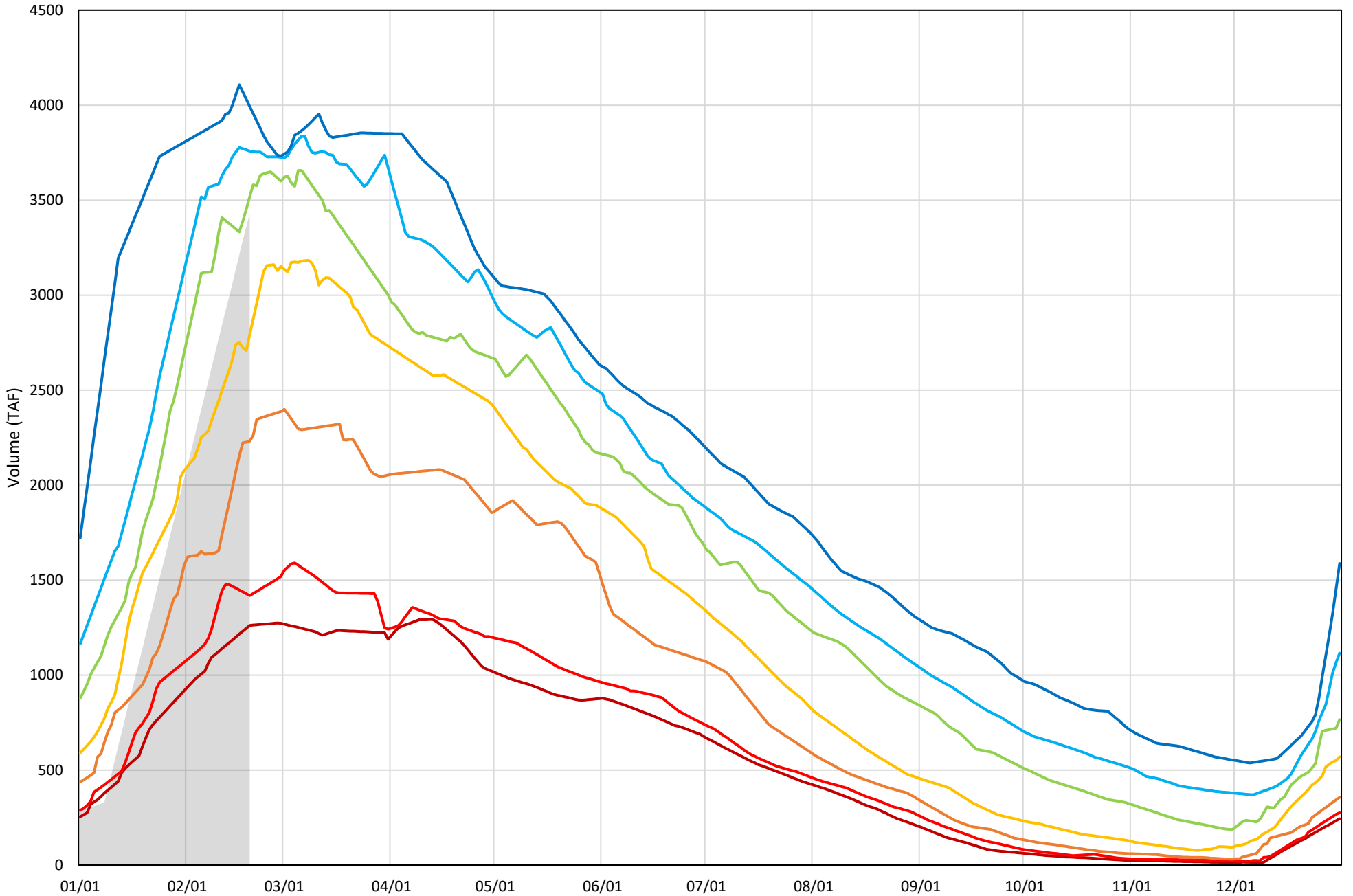
Shasta Lake Cold Water Pool Volume  $\leq 52^{\circ}\text{F}$  - Percent Exceedances (1998-2024)

2025 95 90 75 50 25 10 5



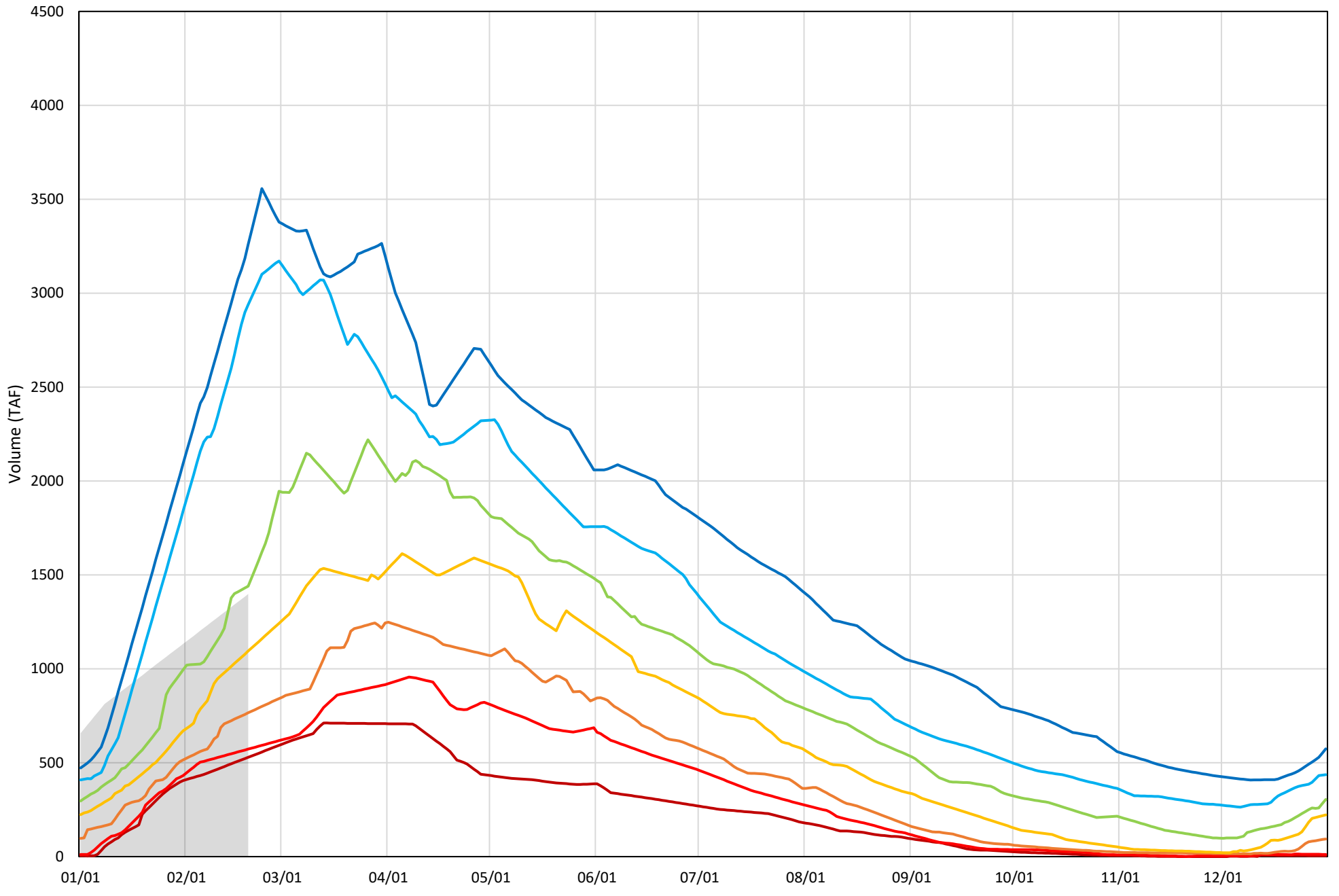
Shasta Lake Cold Water Pool Volume  $\leq 50^{\circ}\text{F}$  - Percent Exceedances (1998-2024)

2025 95 90 75 50 25 10 5



Shasta Lake Cold Water Pool Volume  $\leq 48^{\circ}\text{F}$  - Percent Exceedances (1998-2024)

2025 95 90 75 50 25 10 5



## Shasta Lake Cold Water Pool Comparison by Year (for Specified Date)

Feb-20 2025	$\Delta$ TAF				% $\Delta$			
	$\leq 52^\circ$	$\leq 50^\circ$	$\leq 48^\circ$	Abs. Avg.	$\leq 52^\circ$	$\leq 50^\circ$	$\leq 48^\circ$	Abs. Avg.
1998	-807	-771	-878	819	-23	-22	-63	36
1999	173	33	2029	745	5	1	145	50
2000	489	483	-474	482	14	14	-34	21
2001	-163	-382	1607	717	-5	-11	115	44
2002	232	281	10	174	7	8	1	5
2003	93	84	-121	100	3	2	-9	5
2004	237	285	-468	330	7	8	-33	16
2005	-601	-764	-304	556	-17	-22	-22	20
2006	138	186	-23	116	4	5	-2	4
2007	105	153	-213	157	3	4	-15	8
2008	-1006	-958	678	881	-29	-28	48	35
2009	-1709	-1661	-116	1162	-49	-48	-8	35
2010	-382	-334	41	252	-11	-10	3	8
2011	196	-642	382	407	6	-19	27	17
2012	-336	-288	-354	326	-10	-8	-25	14
2013	87	-146	41	91	2	-4	3	3
2014	-1687	-2014	-747	1483	-48	-59	-53	54
2015	-1461	-2275	-818	1518	-42	-66	-59	56
2016	-780	-1098	-446	775	-22	-32	-32	29
2017	564	612	1523	900	16	18	109	48
2018	-705	-1257	-857	940	-20	-37	-61	39
2019	-70	-21	-470	187	-2	-1	-34	12
2020	32	-2015	-570	872	1	-59	-41	33
2021	-1250	-1202	-685	1046	-36	-35	-49	40
2022	-1815	-1766	-633	1405	-52	-51	-45	50
2023	-793	-745	1234	924	-23	-22	88	44
2024	319	-1028	-701	682	9	-30	-50	30
2025	0	0	0	0	0	0	0	0

}

Historical - Current

}

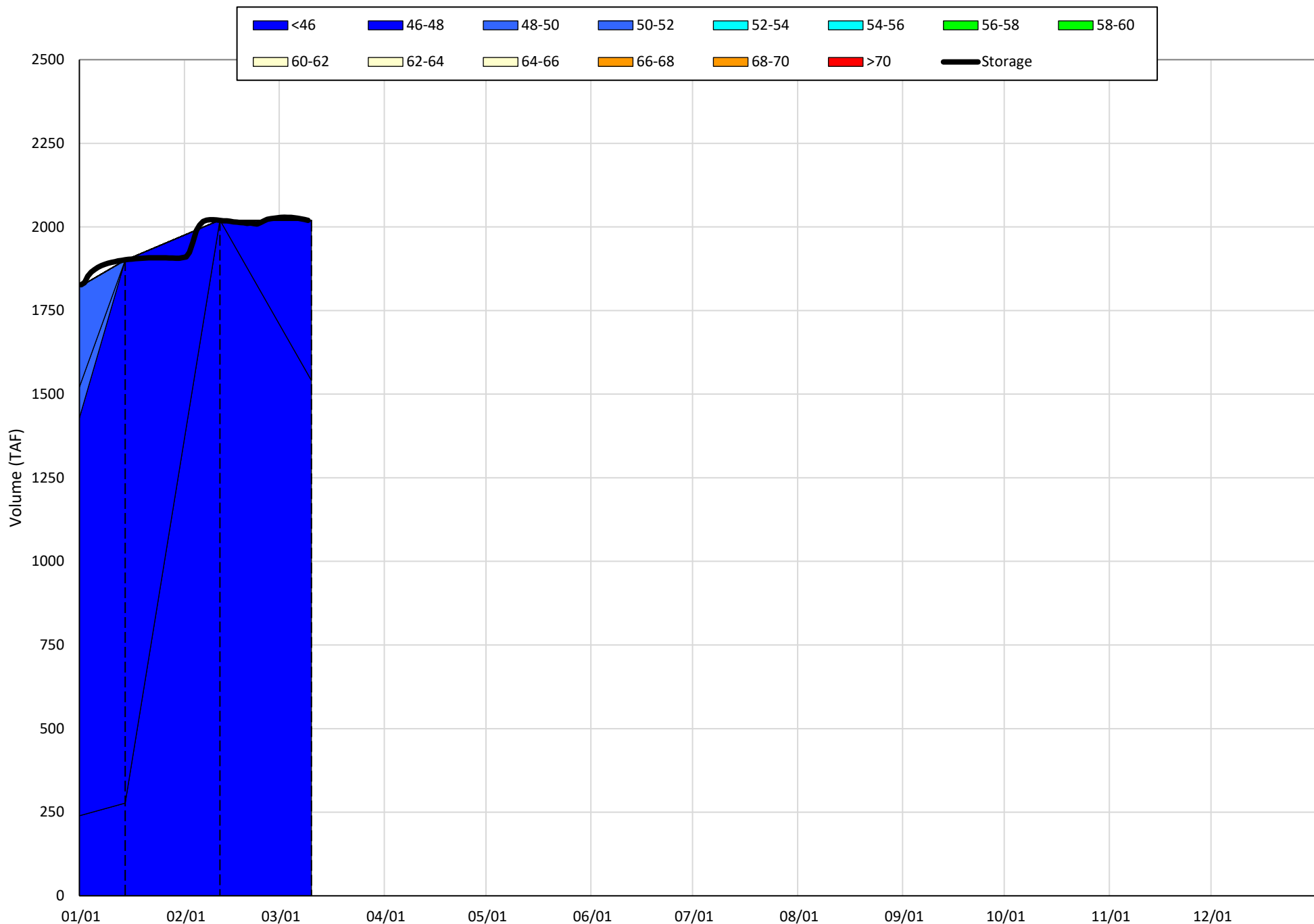
(Historical - Current) / Current

# Trinity Lake Isothermobaths & Cold Water Pool Statistics

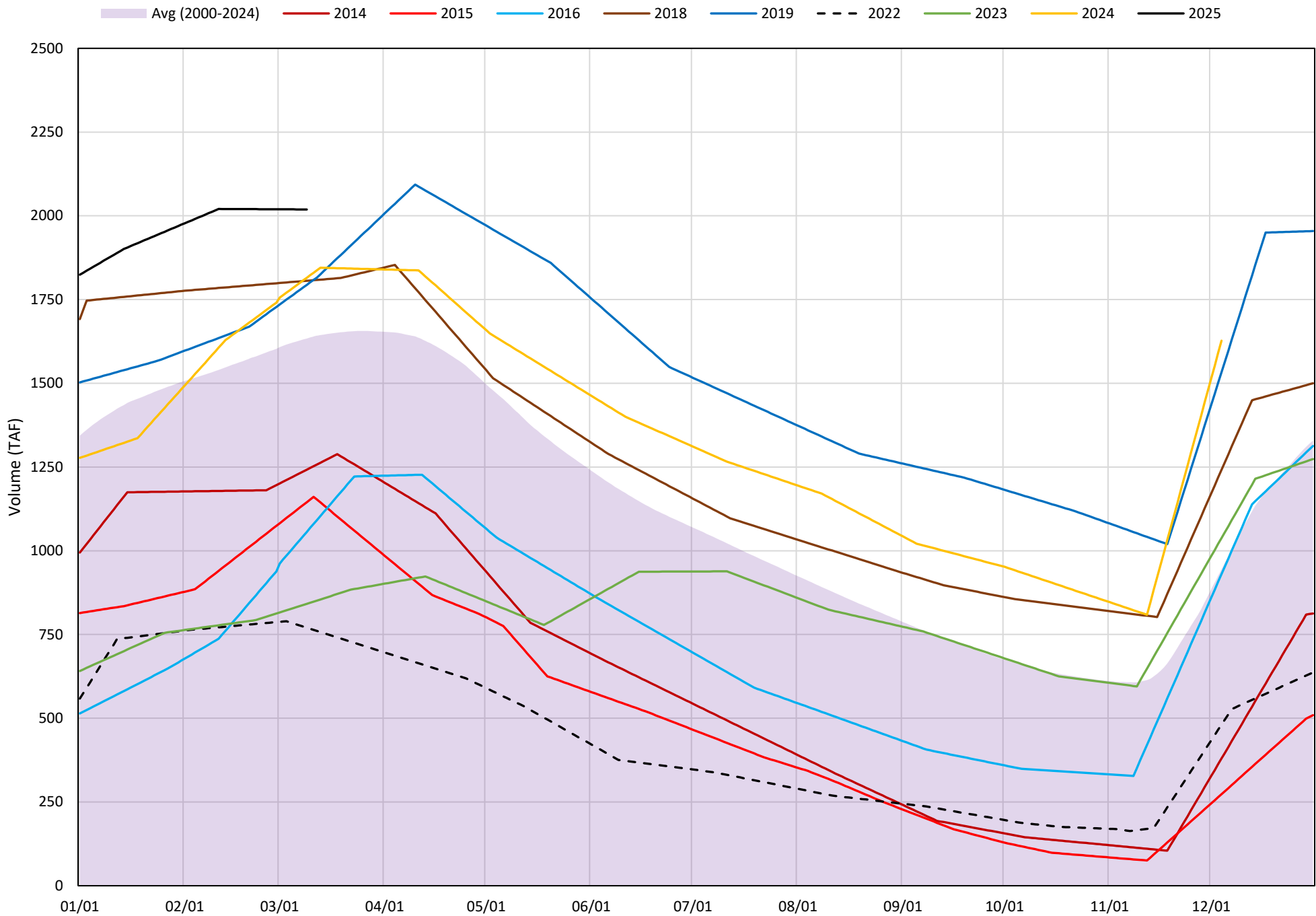
## 2025

Page	Description
15	- Trinity Lake Isothermobaths Plot
16	- Trinity Lake Cold Water Pool Volume $\leq 52^{\circ}\text{F}$
17	- Trinity Lake Cold Water Pool Volume $\leq 50^{\circ}\text{F}$
18	- Trinity Lake Cold Water Pool Volume $\leq 48^{\circ}\text{F}$
19	- Trinity Lake Cold Water Pool Volume $\leq 52^{\circ}\text{F}$ - Percent Exceedances
20	- Trinity Lake Cold Water Pool Volume $\leq 50^{\circ}\text{F}$ - Percent Exceedances
21	- Trinity Lake Cold Water Pool Volume $\leq 48^{\circ}\text{F}$ - Percent Exceedances
22	- Trinity Lake Cold Water Pool Comparison by Year

Trinity Lake Isothermobaths Plot - 2025

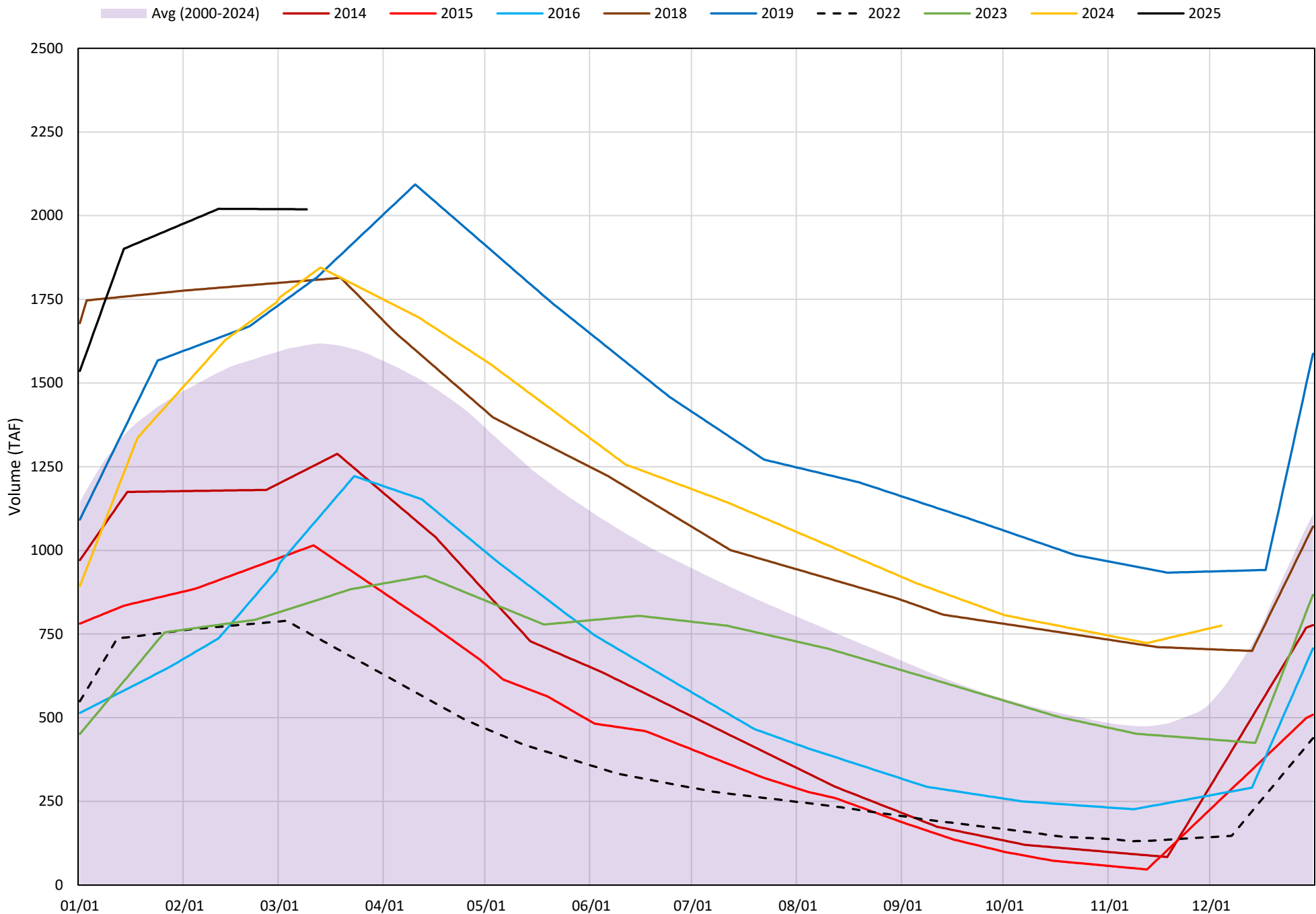


# Trinity Lake Cold Water Pool Volume ≤52°F

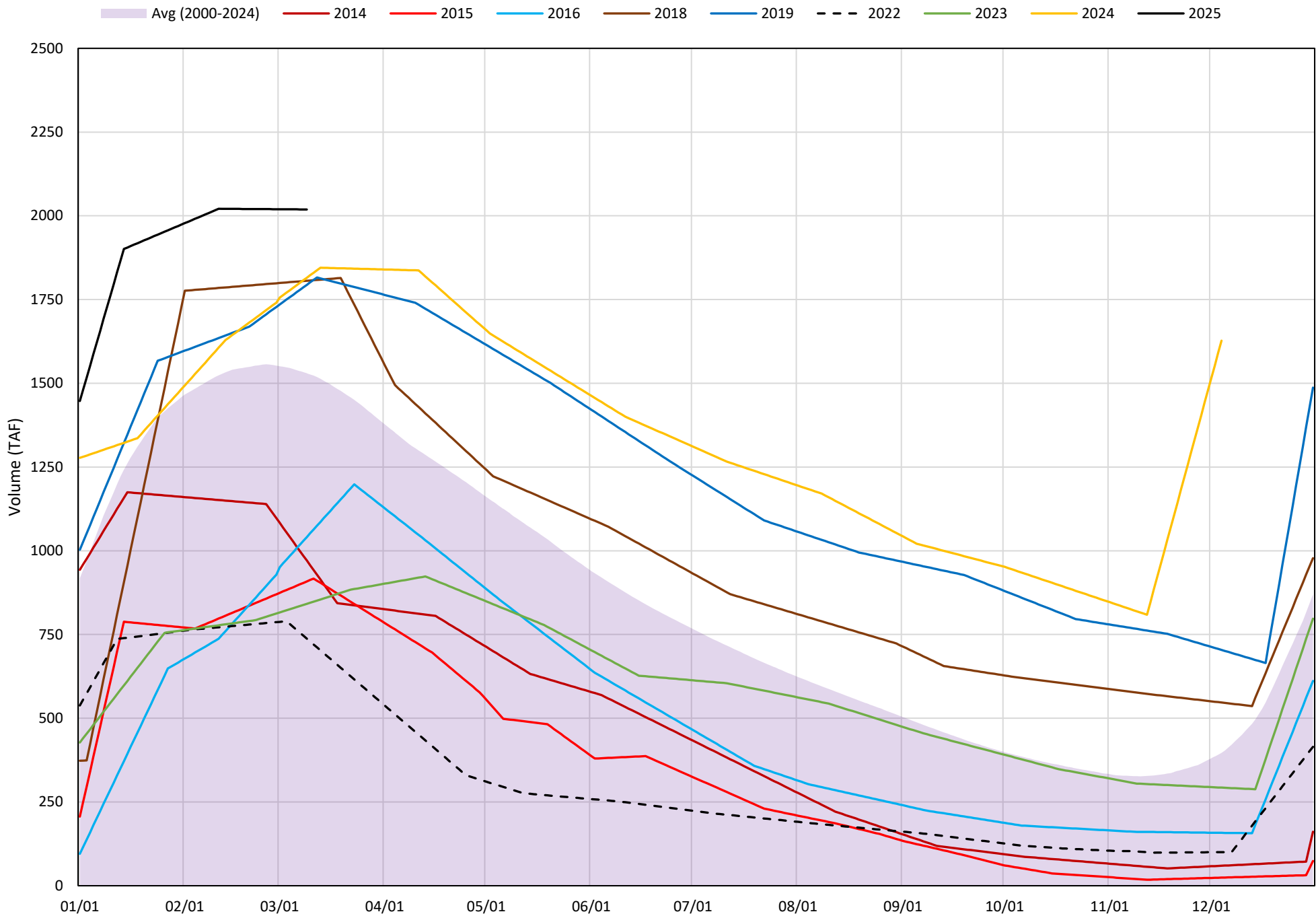




# Trinity Lake Cold Water Pool Volume ≤50°F

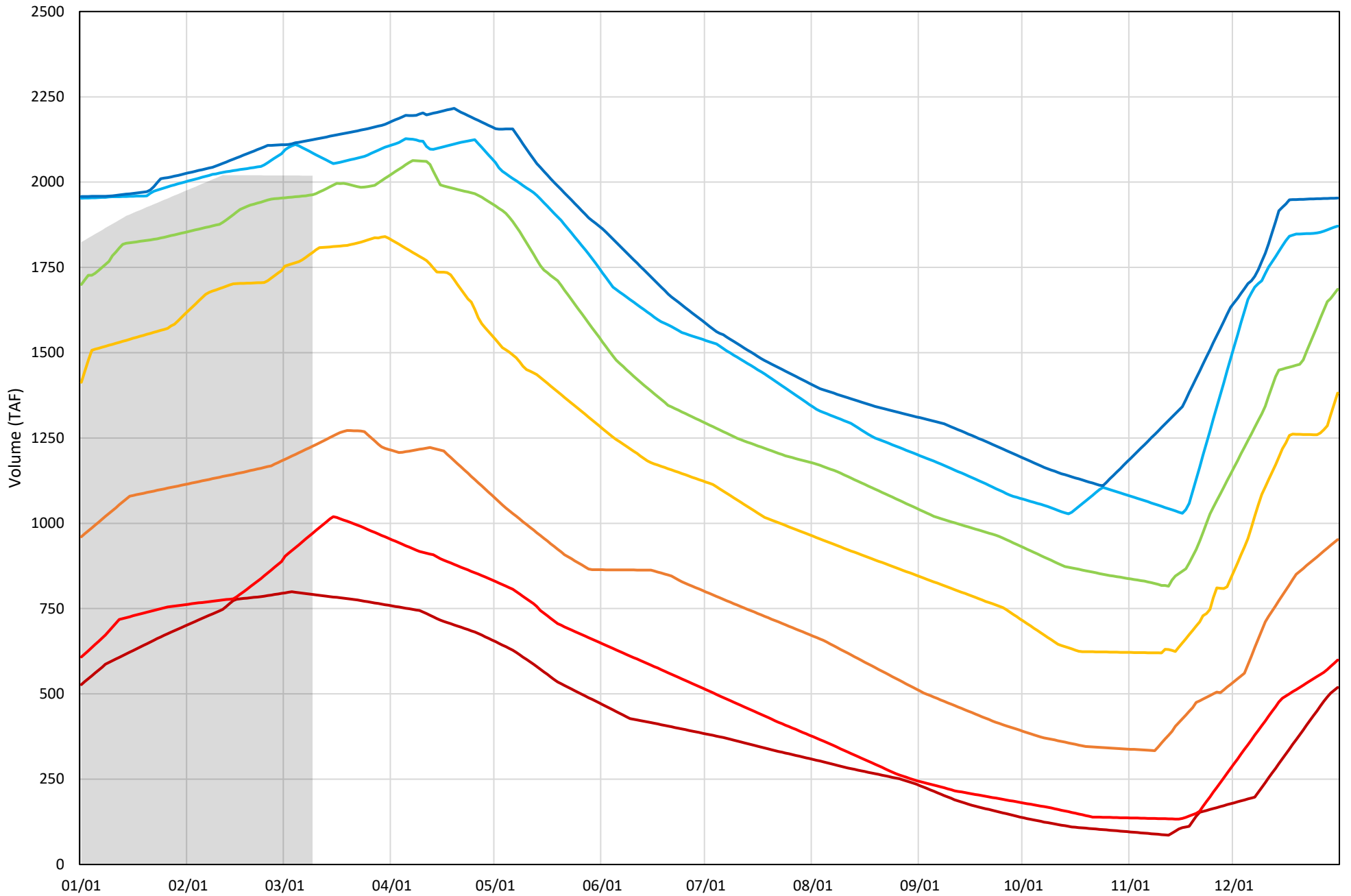


# Trinity Lake Cold Water Pool Volume $\leq 48^{\circ}\text{F}$



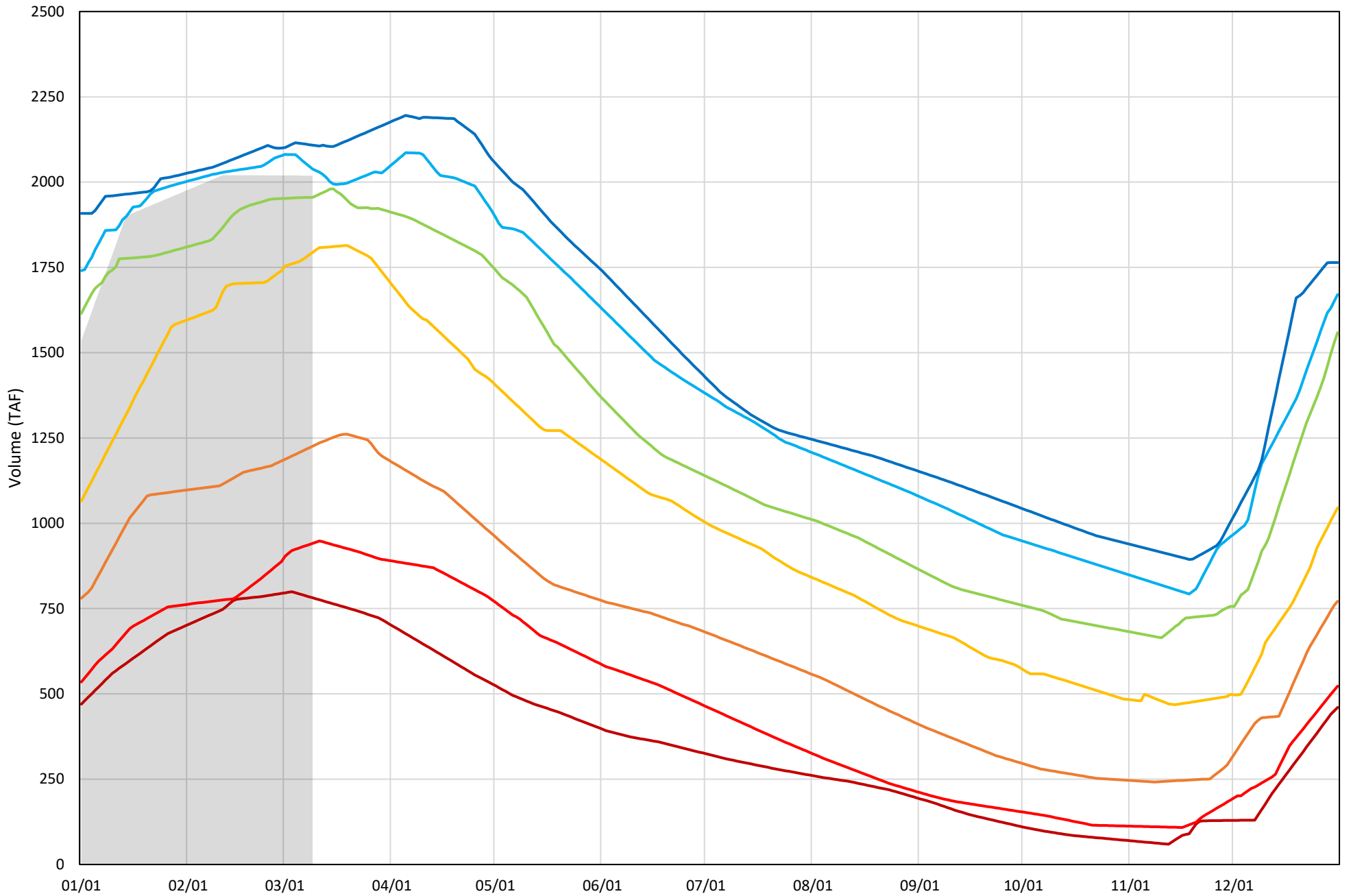
Trinity Lake Cold Water Pool Volume  $\leq 52^{\circ}\text{F}$  - Percent Exceedances (2000-2024)

2025 95 90 75 50 25 10 5



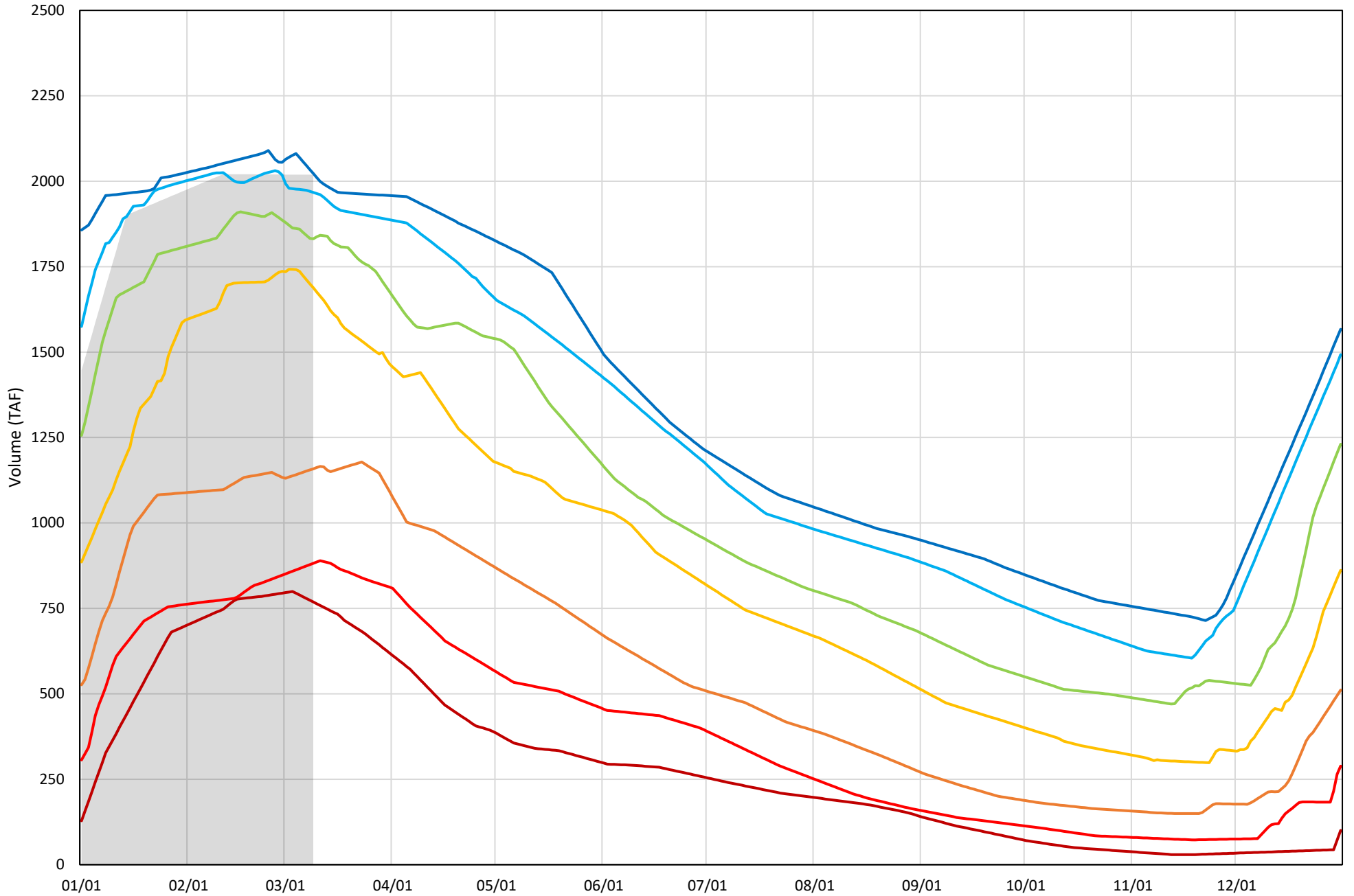
Trinity Lake Cold Water Pool Volume  $\leq 50^{\circ}\text{F}$  - Percent Exceedances (2000-2024)

2025 95 90 75 50 25 10 5



Trinity Lake Cold Water Pool Volume  $\leq 48^{\circ}\text{F}$  - Percent Exceedances (2000-2024)

2025 95 90 75 50 25 10 5



### Trinity Cold Water Pool Comparison by Year (for Specified Date)

Mar-10 2025	Δ TAF				% Δ			
	≤52°	≤50°	≤48°	Abs. Avg.	≤52°	≤50°	≤48°	Abs. Avg.
2000	87	9	-220	105	4	0	-11	5
2001	-332	-351	-380	354	-16	-17	-19	18
2002	-239	-239	-280	253	-12	-12	-14	13
2003	-48	-59	-294	134	-2	-3	-15	7
2004	53	34	14	33	3	2	1	2
2005	-299	-535	-659	498	-15	-27	-33	25
2006	113	113	-20	82	6	6	-1	4
2007	-90	-90	-363	181	-4	-4	-18	9
2008	-504	-504	-504	504	-25	-25	-25	25
2009	-911	-911	-911	911	-45	-45	-45	45
2010	-809	-809	-809	809	-40	-40	-40	40
2011	-68	-68	-112	83	-3	-3	-6	4
2012	-64	-70	-73	69	-3	-3	-4	3
2013	-15	-15	-146	58	-1	-1	-7	3
2014	-777	-777	-1048	867	-38	-38	-52	43
2015	-874	-1011	-1111	999	-43	-50	-55	49
2016	-962	-962	-978	968	-48	-48	-48	48
2017	-87	-87	-171	115	-4	-4	-8	6
2018	-213	-213	-213	213	-11	-11	-11	11
2019	-225	-225	-225	225	-11	-11	-11	11
2020	9	9	-331	116	0	0	-16	6
2021	-742	-742	-742	742	-37	-37	-37	37
2022	-1249	-1263	-1281	1264	-62	-63	-63	63
2023	-1177	-1177	-1177	1177	-58	-58	-58	58
2024	-204	-204	-204	204	-10	-10	-10	10
2025	0	0	0	0	0	0	0	0

}

Historical - Current

}

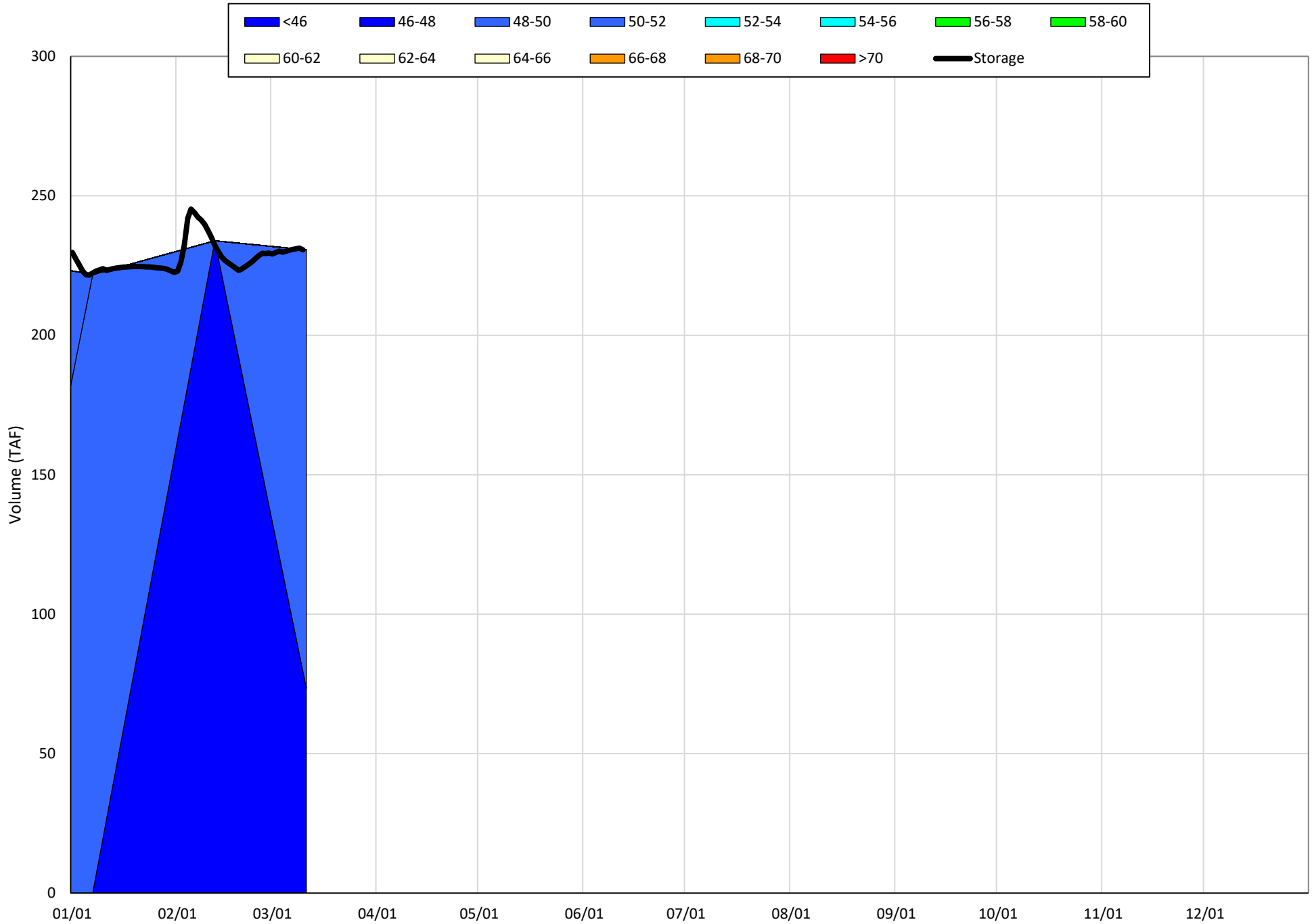
(Historical - Current) / Current

# Whiskeytown Lake Isothermobaths & Cold Water Pool Statistics

## 2025

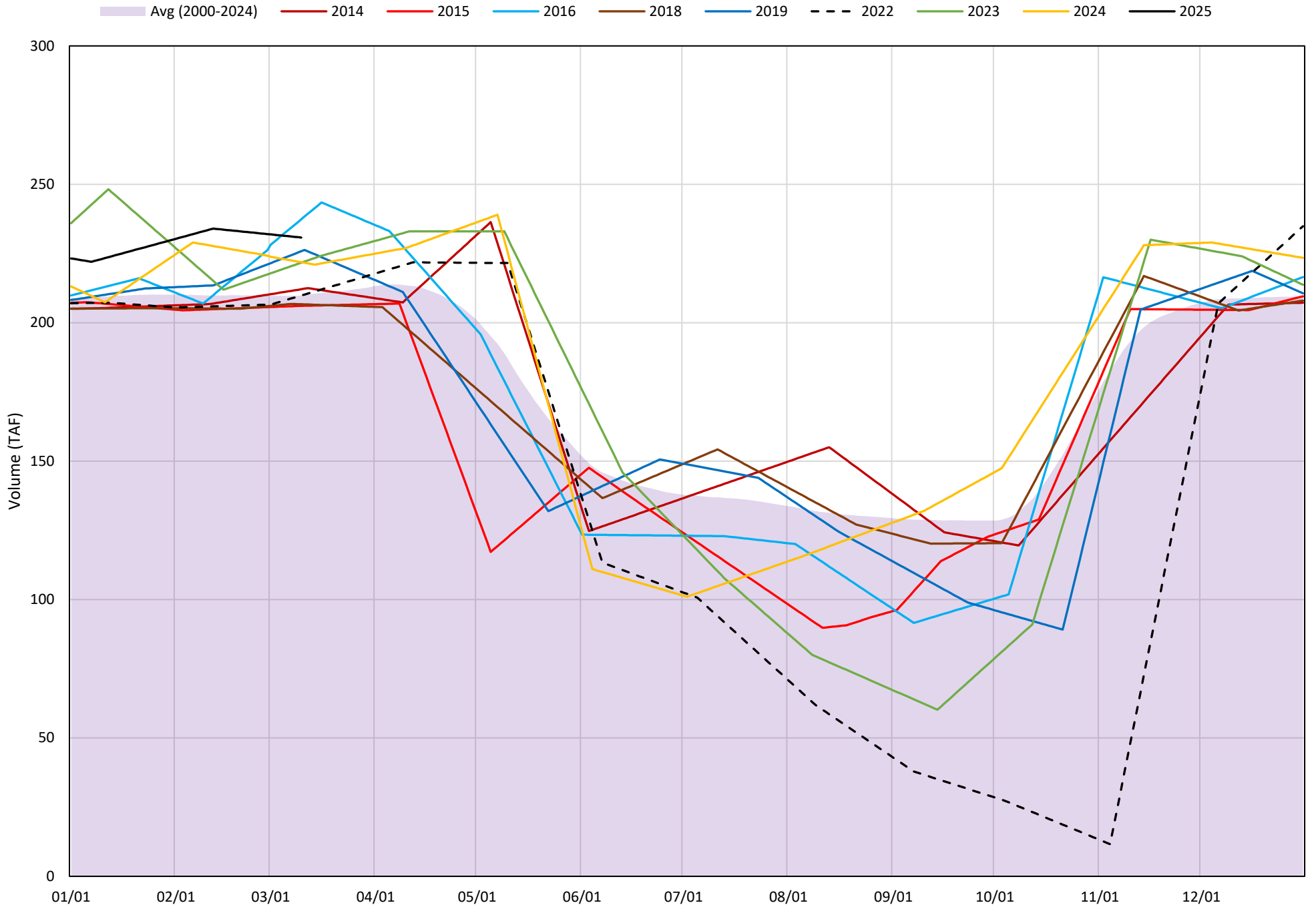
Page	Description
24	- Whiskeytown Lake Isothermobaths Plot
25	- Whiskeytown Lake Cold Water Pool Volume $\leq 60^{\circ}\text{F}$
26	- Whiskeytown Lake Cold Water Pool Volume $\leq 58^{\circ}\text{F}$
27	- Whiskeytown Lake Cold Water Pool Volume $\leq 56^{\circ}\text{F}$
28	- Whiskeytown Lake Cold Water Pool Volume $\leq 60^{\circ}\text{F}$ - Percent Exceedances
29	- Whiskeytown Lake Cold Water Pool Volume $\leq 58^{\circ}\text{F}$ - Percent Exceedances
30	- Whiskeytown Lake Cold Water Pool Volume $\leq 56^{\circ}\text{F}$ - Percent Exceedances
31	- Whiskeytown Lake Cold Water Pool Comparison by Year

# Whiskeytown Lake Isothermobaths Plot - 2025



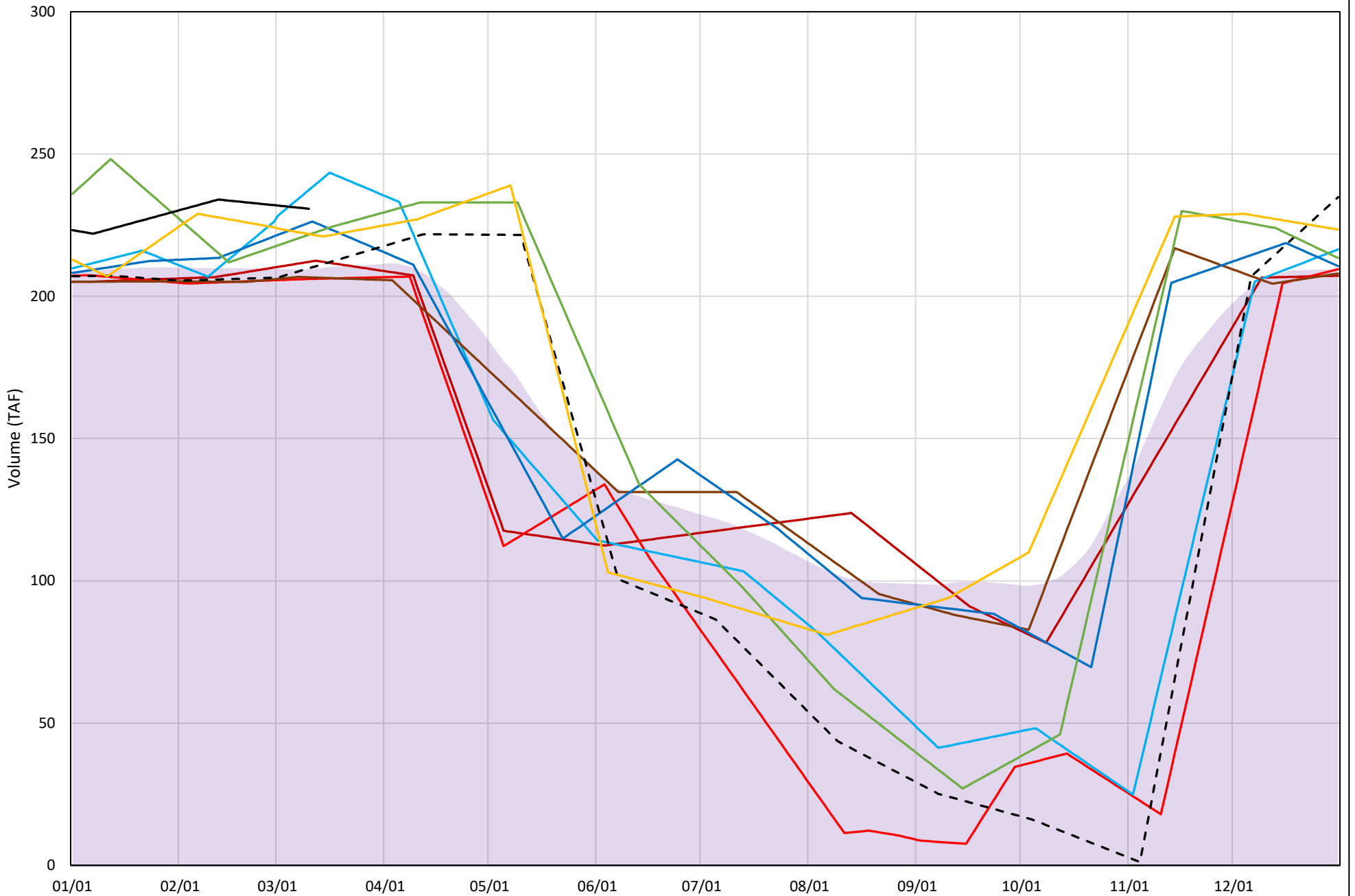


# Whiskeytown Lake Cold Water Pool Volume ≤60°F

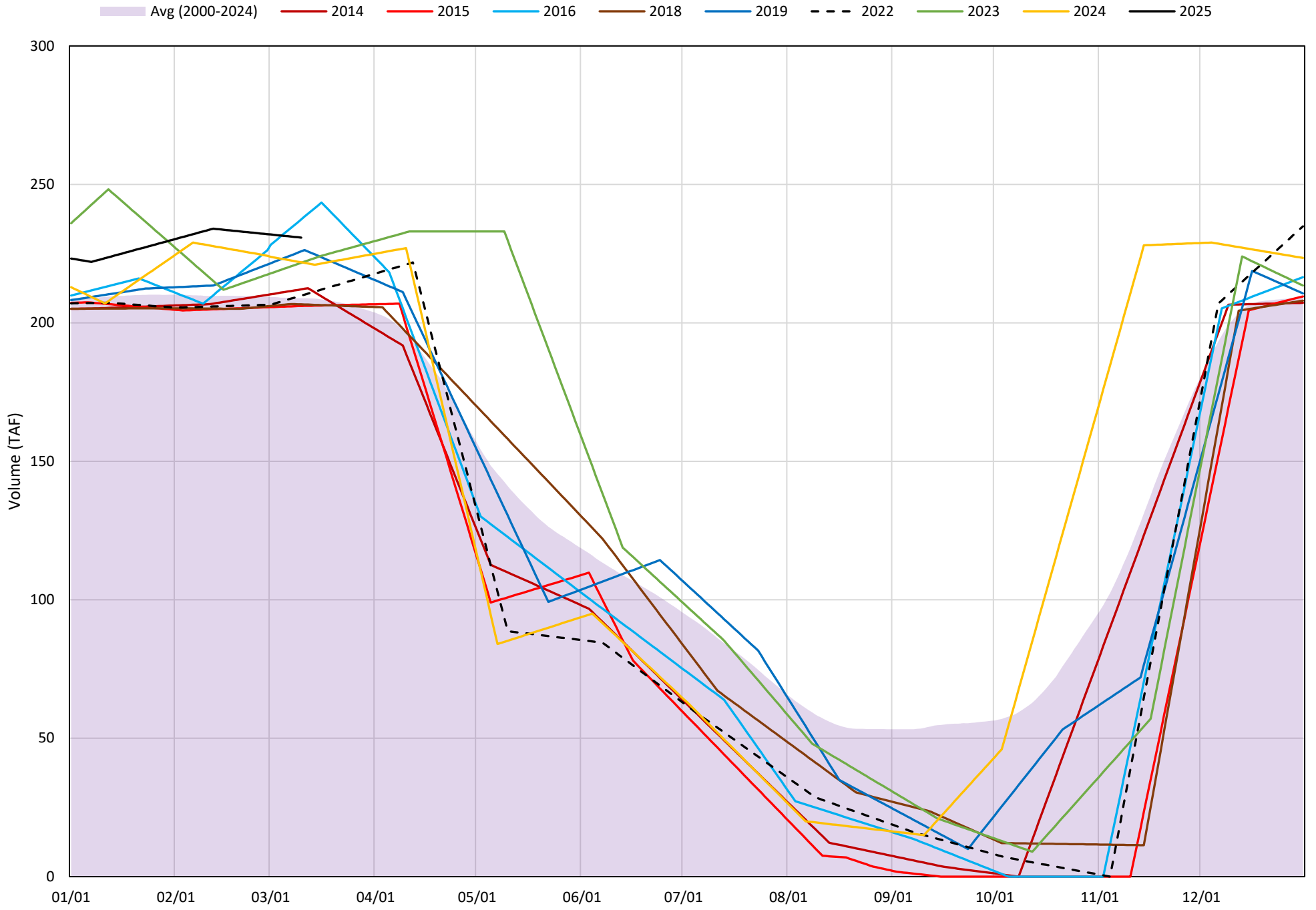


# Whiskeytown Lake Cold Water Pool Volume ≤58°F

█ Avg (2000-2024)   
 █ 2014   
 █ 2015   
 █ 2016   
 █ 2018   
 █ 2019   
     2022   
 █ 2023   
 █ 2024   
 █ 2025

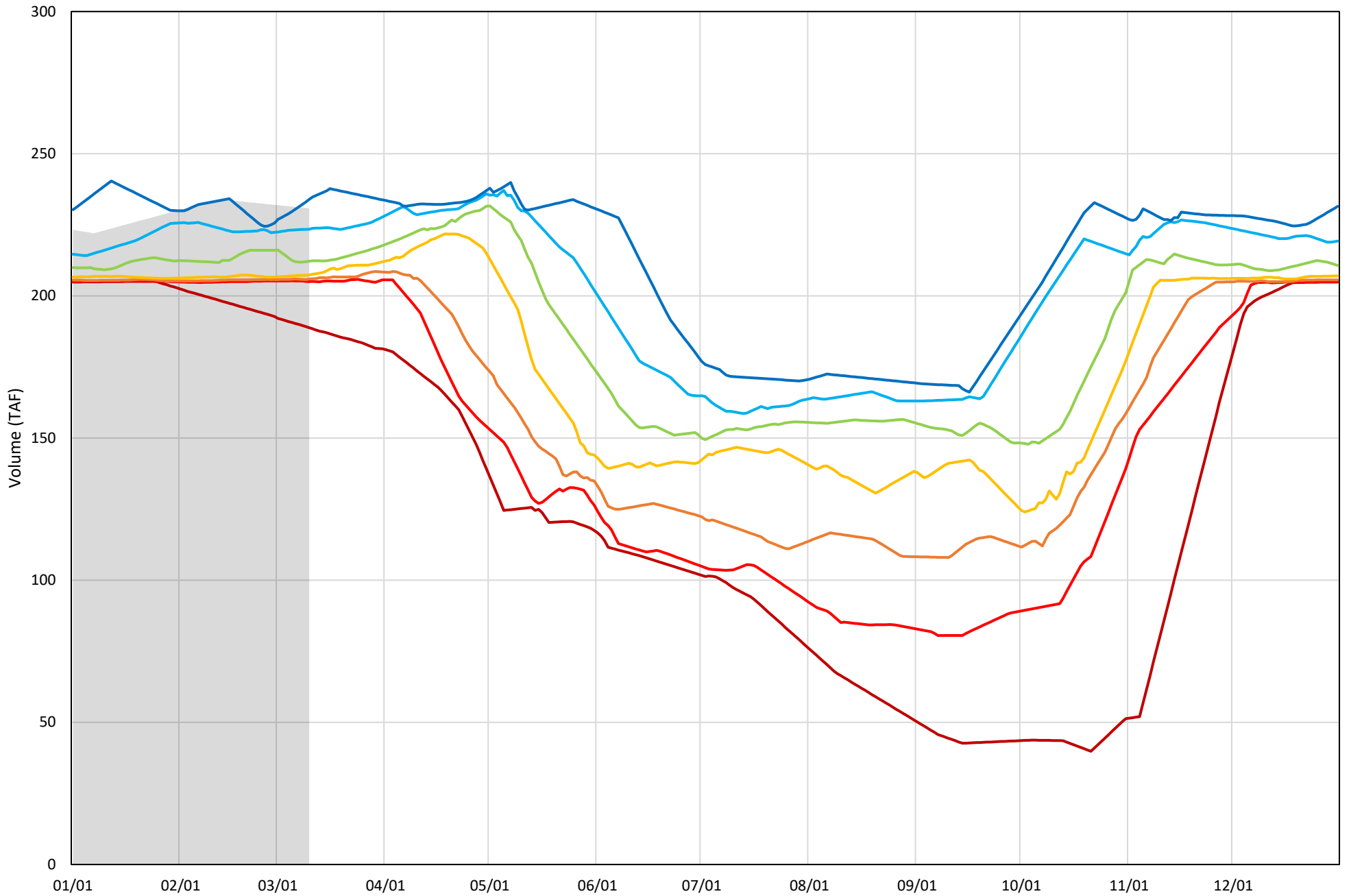


# Whiskeytown Lake Cold Water Pool Volume ≤56°F



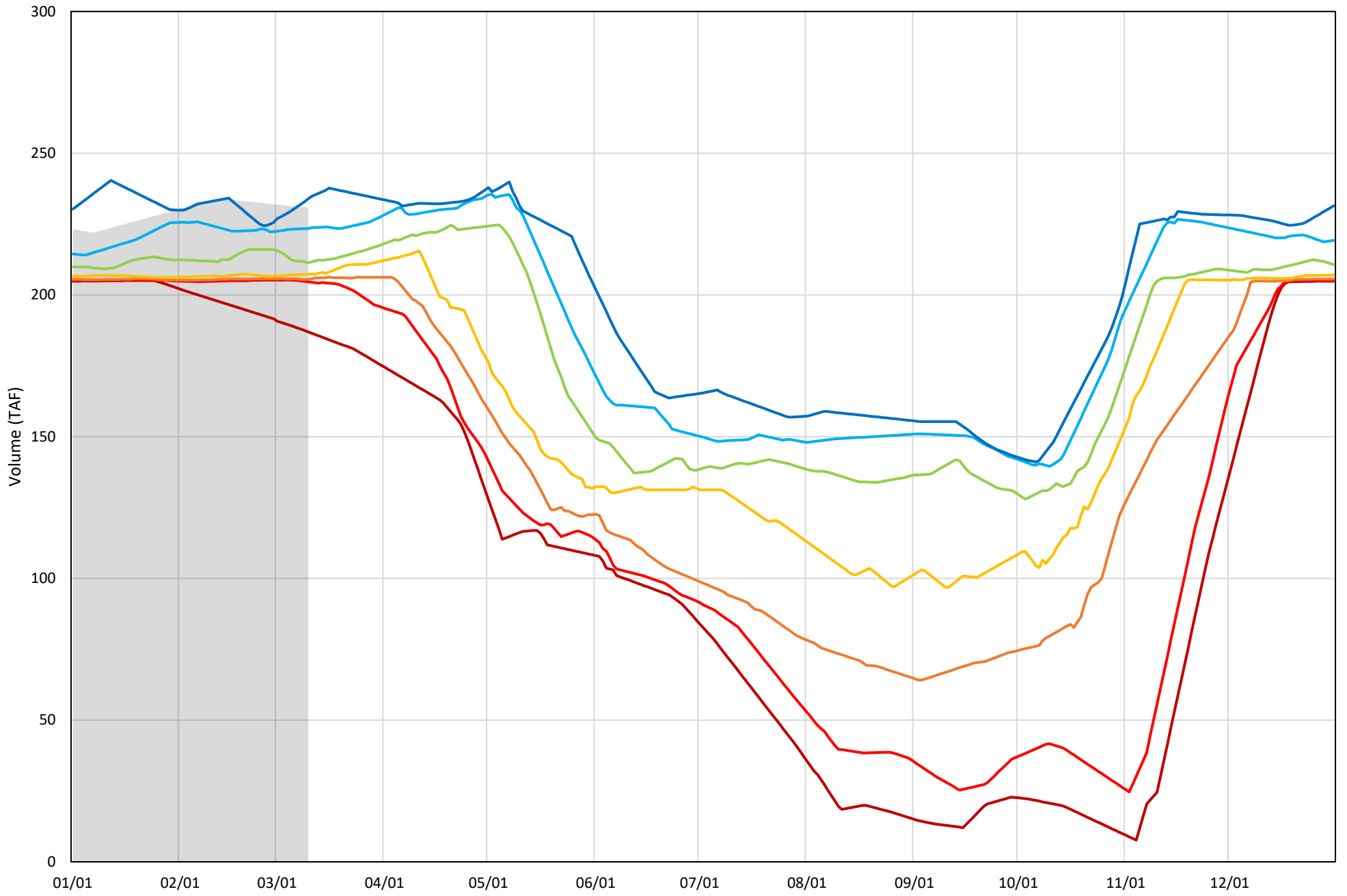
Whiskeytown Lake Cold Water Pool Volume  $\leq 60^{\circ}\text{F}$  - Percent Exceedances (2000-2024)

2025 95 90 75 50 25 10 5



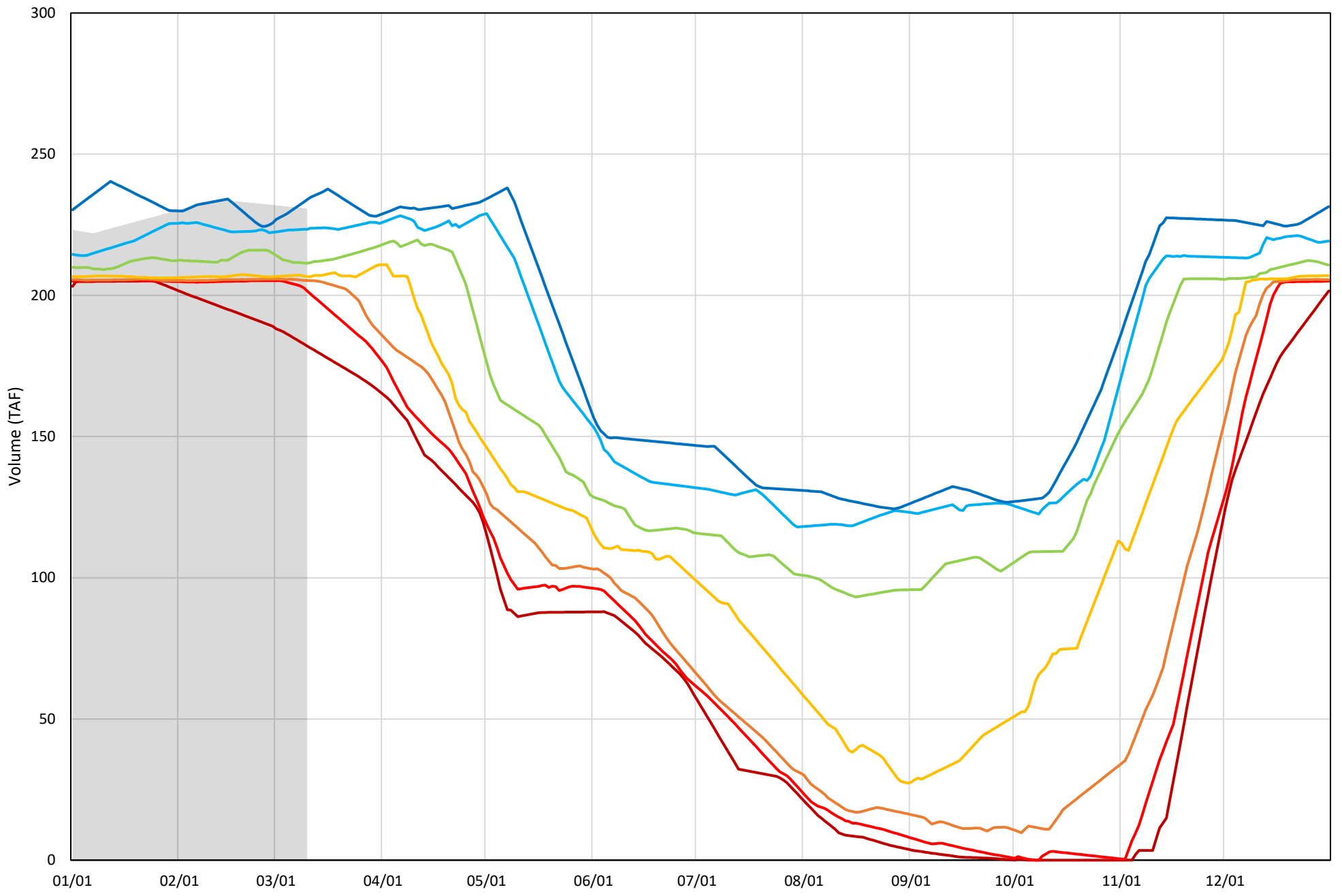
# Whiskeytown Lake Cold Water Pool Volume $\leq 58^{\circ}\text{F}$ - Percent Exceedances (2000-2024)

2025 95 90 75 50 25 10 5



Whiskeytown Lake Cold Water Pool Volume  $\leq 56^{\circ}\text{F}$  - Percent Exceedances (2000-2024)

2025 95 90 75 50 25 10 5



### Whiskeytown Cold Water Pool Comparison by Year (for Specified Date)

Mar-11 2025	Δ TAF				% Δ			
	≤60°	≤58°	≤56°	Abs. Avg.	≤60°	≤58°	≤56°	Abs. Avg.
2000	-25.8	-25.8	-25.8	25.8	-11.2	-11.2	-11.2	11.2
2001	-17.4	-20.1	-27.4	21.6	-7.5	-8.7	-11.9	9.4
2002	-25.5	-25.5	-25.5	25.5	-11.1	-11.1	-11.1	11.1
2003	-24.7	-24.7	-24.7	24.7	-10.7	-10.7	-10.7	10.7
2004	-23.4	-26.6	-31.9	27.3	-10.1	-11.5	-13.8	11.8
2005	-24.8	-24.8	-24.8	24.8	-10.7	-10.7	-10.7	10.7
2006	-24.9	-24.9	-24.9	24.9	-10.8	-10.8	-10.8	10.8
2007	-23.5	-23.5	-24.2	23.7	-10.2	-10.2	-10.5	10.3
2008	-20.5	-20.5	-20.5	20.5	-8.9	-8.9	-8.9	8.9
2009	-18.5	-18.5	-18.5	18.5	-8.0	-8.0	-8.0	8.0
2010	-20.1	-20.1	-20.1	20.1	-8.7	-8.7	-8.7	8.7
2011	-20.7	-20.7	-20.7	20.7	-9.0	-9.0	-9.0	9.0
2012	-48.9	-51.2	-55.9	52.0	-21.2	-22.2	-24.2	22.5
2013	-25.5	-25.5	-25.5	25.5	-11.1	-11.1	-11.1	11.1
2014	-18.7	-18.7	-18.7	18.7	-8.1	-8.1	-8.1	8.1
2015	-24.7	-24.7	-24.7	24.7	-10.7	-10.7	-10.7	10.7
2016	6.6	6.6	6.6	6.6	2.9	2.9	2.9	2.9
2017	-23.4	-23.4	-23.4	23.4	-10.2	-10.2	-10.2	10.2
2018	-24.1	-24.1	-24.1	24.1	-10.4	-10.4	-10.4	10.4
2019	-5.0	-5.0	-5.0	5.0	-2.2	-2.2	-2.2	2.2
2020	-25.7	-25.7	-25.7	25.7	-11.1	-11.1	-11.1	11.1
2021	-23.7	-23.7	-23.7	23.7	-10.3	-10.3	-10.3	10.3
2022	-20.9	-20.9	-20.9	20.9	-9.1	-9.1	-9.1	9.1
2023	-9.1	-9.1	-9.1	9.1	-3.9	-3.9	-3.9	3.9
2024	-8.9	-8.9	-8.9	8.9	-3.9	-3.9	-3.9	3.9
2025	0.0	0.0	0.0	0.0	0.0	0.0	0.0	0.0

Historical - Current

(Historical - Current) / Current