

Draft Site Plans for Required and Potential Authorized Services and Facilities

This document provides a planning perspective for Required and Authorized Facilities and Services by presenting maps of the five Concession Areas included in the Prospectus. Highlighted portions of these maps represent those portions of the facilities that fulfill the Required Services as identified in Section 2 of the Draft Concession Contract (Part 6 of the Prospectus). The contents of this document are intended only to serve as informational and will be superseded and replaced by the *60% Design Level Infrastructure Design Report (2015)* upon the completion and distribution of the that report.

Notes:

1. Required and Authorized services shown are for planning purposes only, not for construction
2. Reclamation is conducting 60 percent Infrastructure designs for Required services only and will provide final designs in an amendment to the Prospectus
3. Authorized services depicted are from a partial 60 percent design draft, and are included here for information only.
4. Additional details on Authorized services and facilities be available in a future supplemental report
5. Bidders should not rely on these drawings to formulate bids

Berryessa Point

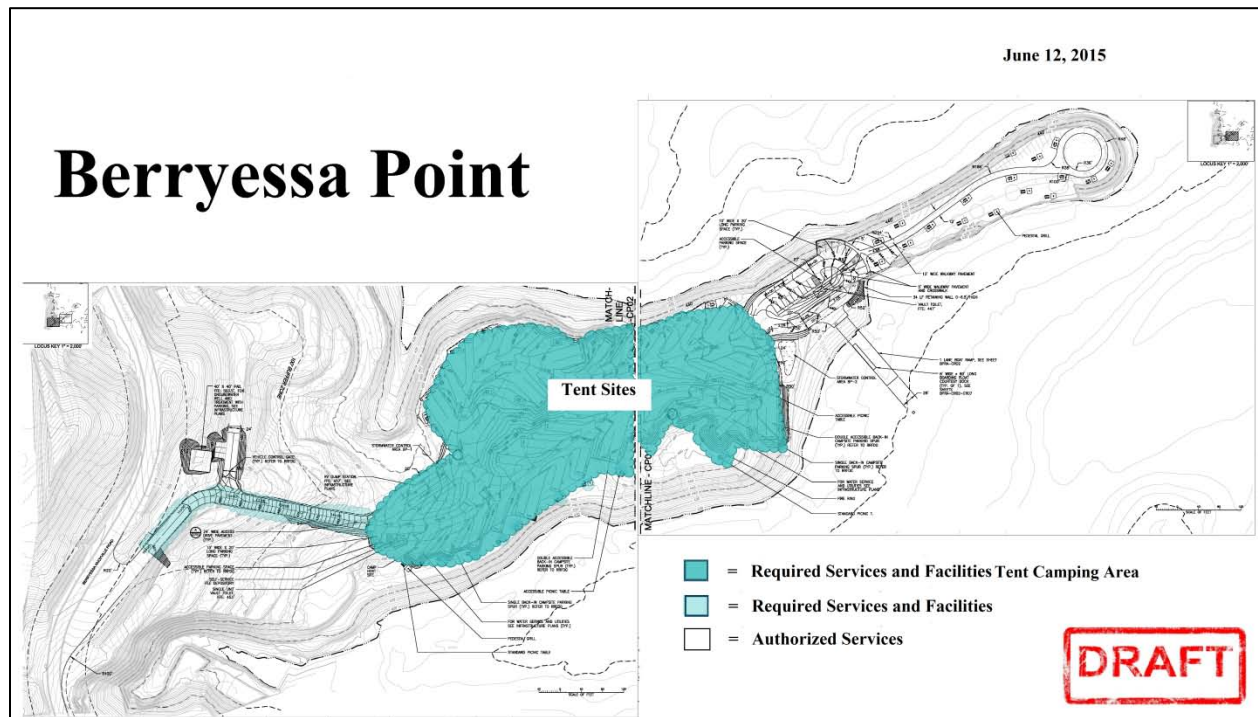


Figure 1: Berryessa Point Required and Potential Authorized Services and Facilities

Monticello Shores

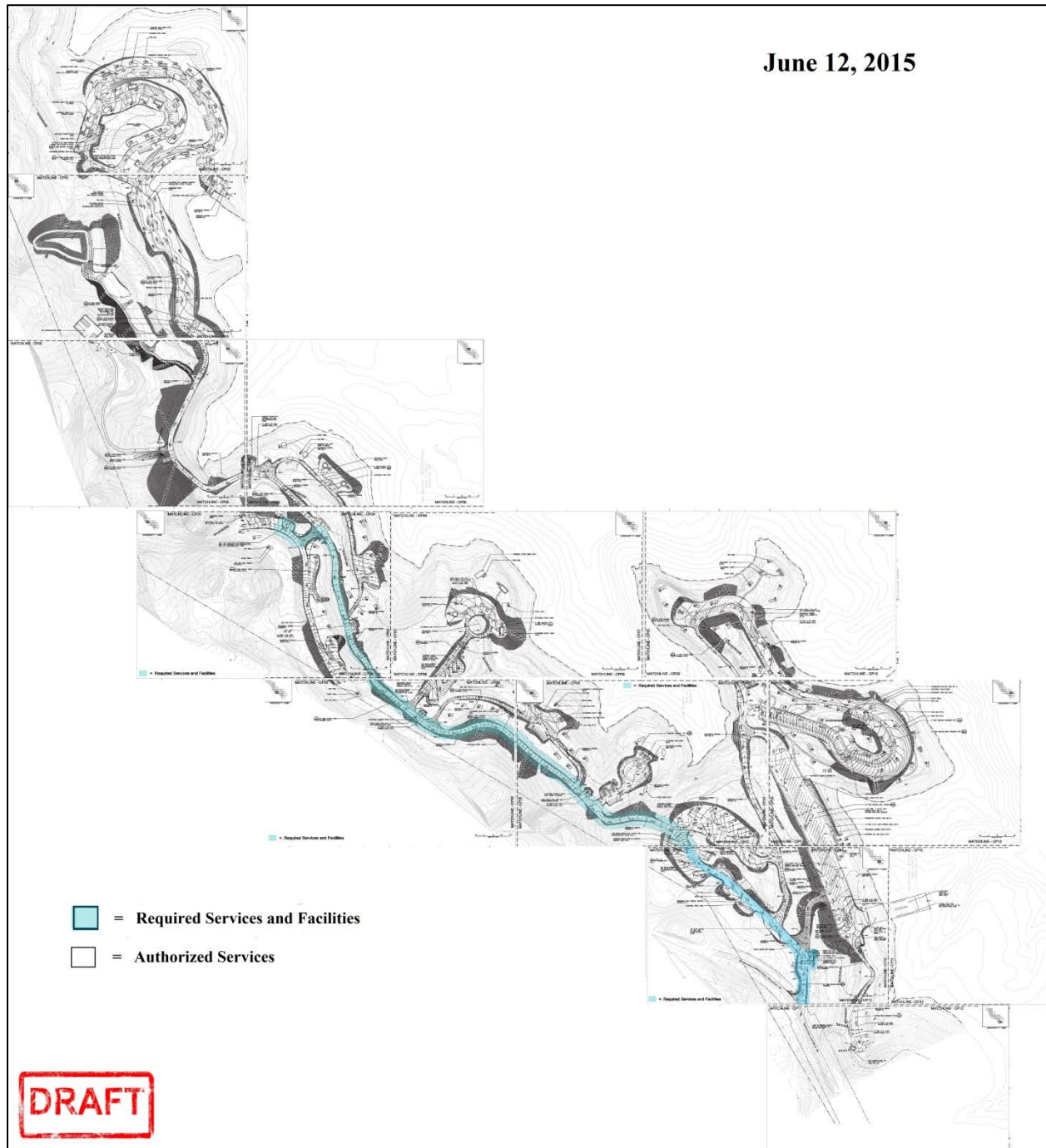


Figure 2: Monticello Shores Required and Potential Authorized Services and Facilities

Putah Canyon

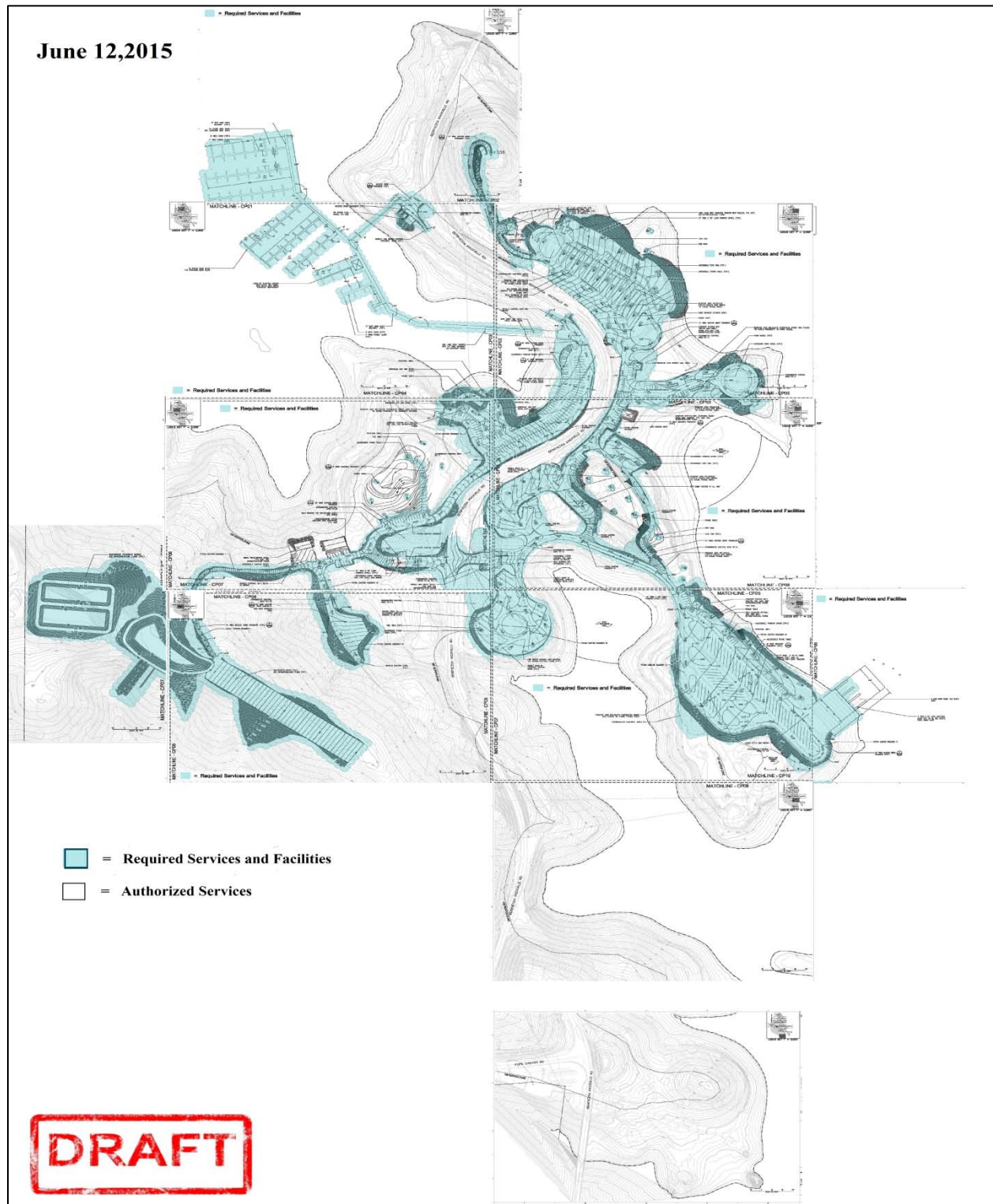


Figure 3: Putah Canyon Required and Potential Authorized Services and Facilities

Spanish Flat

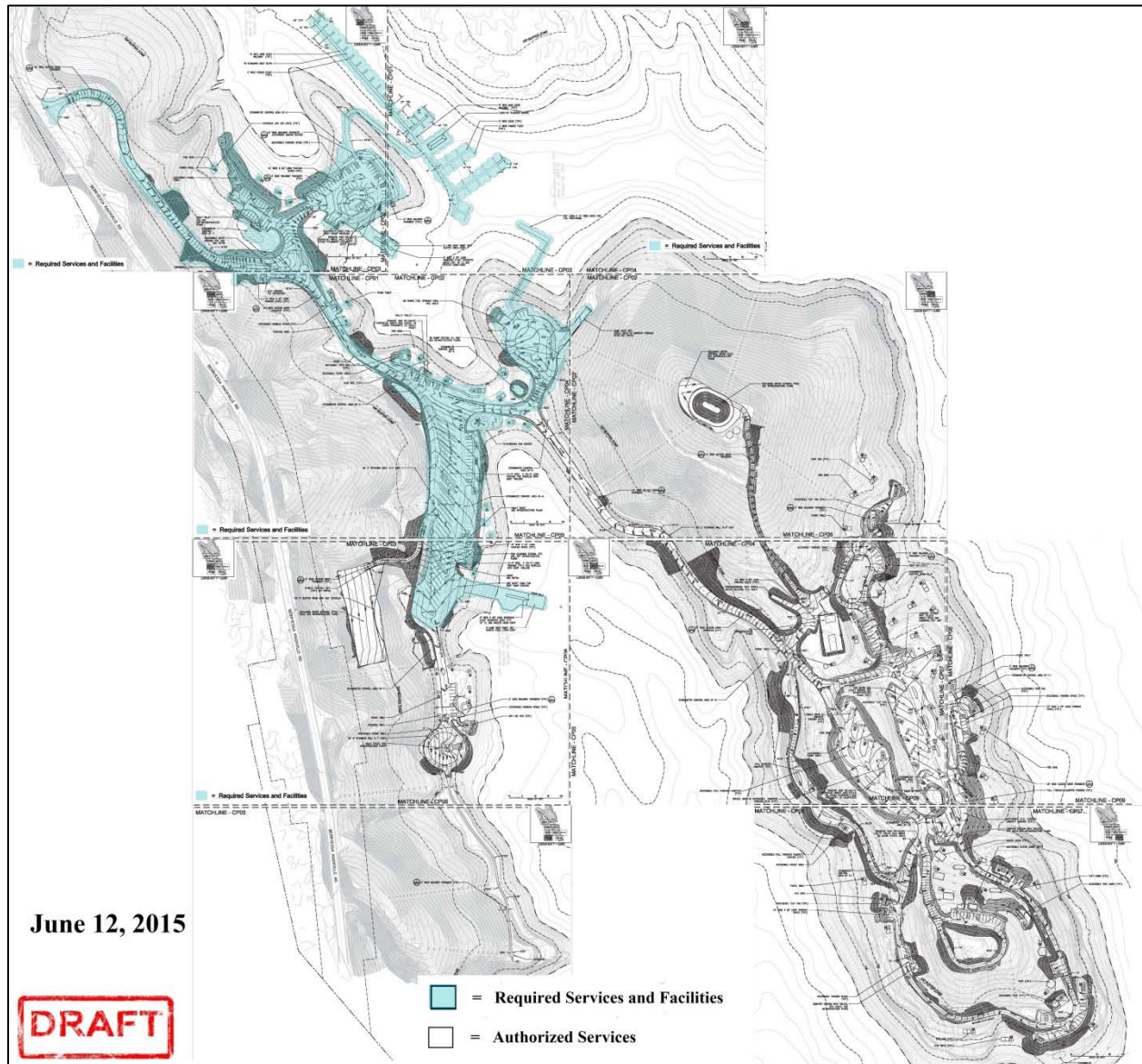


Figure 4: Spanish Flat Required and Potential Authorized Services and Facilities

Steele Canyon

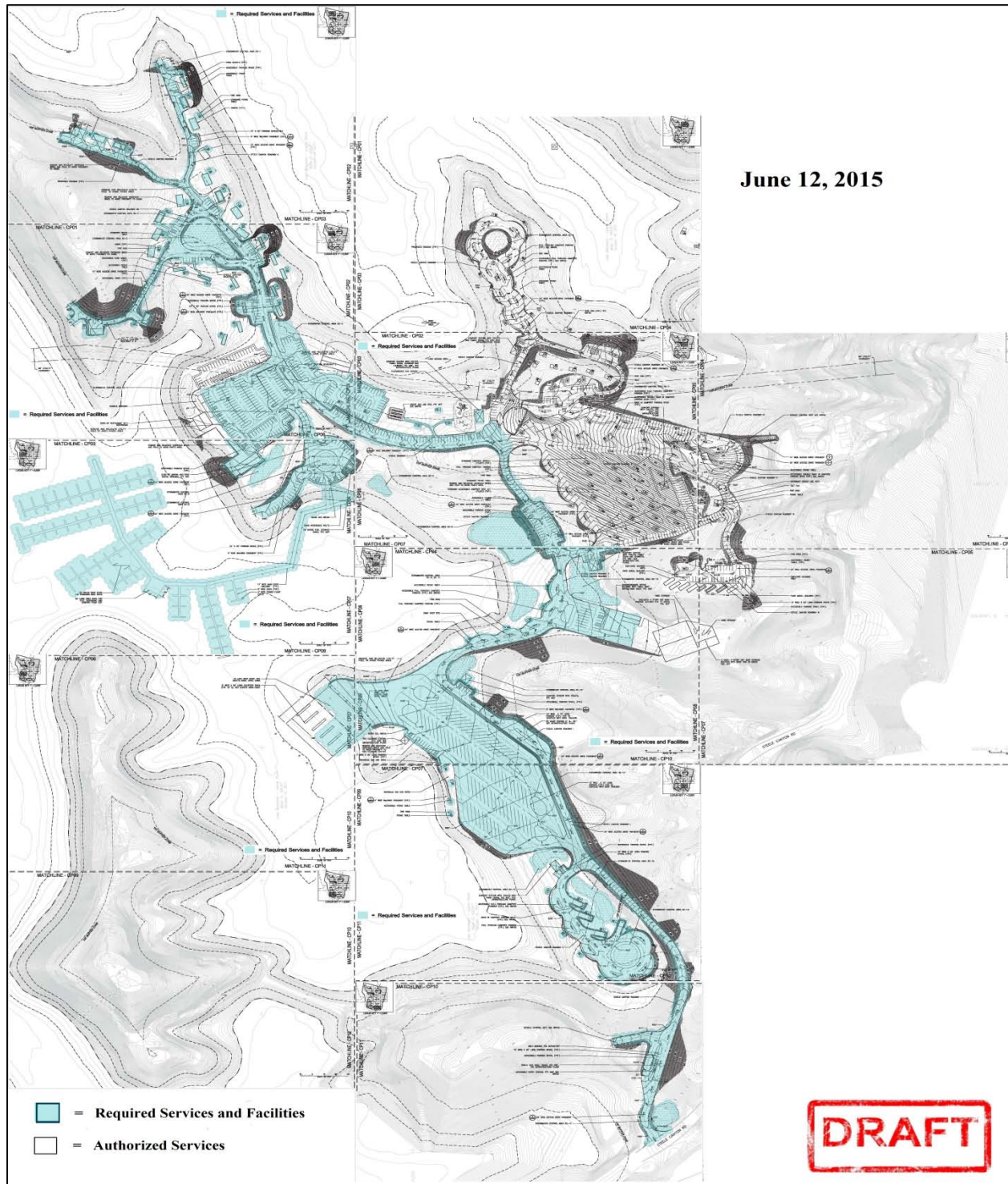


Figure 5: Steele Canyon Required and Potential Authorized Services and Facilities