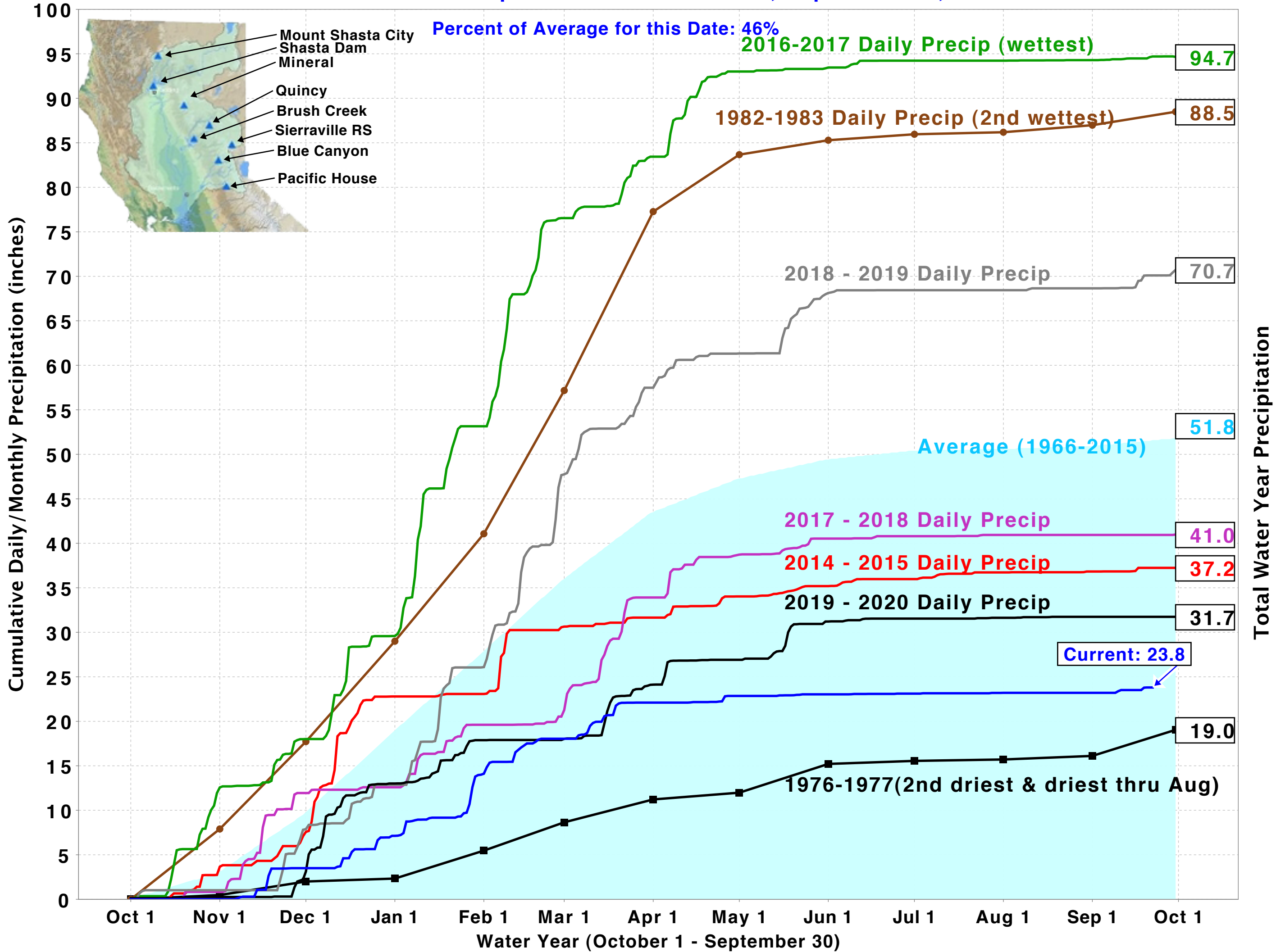


# Northern Sierra Precipitation: 8-Station Index, September 22, 2021



UNITED STATES DEPARTMENT OF THE INTERIOR  
U.S. BUREAU OF RECLAMATION-CENTRAL VALLEY PROJECT-CALIFORNIA

**DAILY CVP WATER SUPPLY REPORT**

SEPTEMBER 21, 2021

RUN DATE: September 22, 2021

**RESERVOIR RELEASES IN CUBIC FEET/SECOND**

RESERVOIR	DAM	WY2020	WY2021	15 YR MEDIAN
TRINITY	LEWISTON	436	457	466
SACRAMENTO	KESWICK	6,856	6,852	7,033
FEATHER	OROVILLE (SWP)	2,100	1,250	4,000
AMERICAN	NIMBUS	1,788	562	1,631
STANISLAUS	GOODWIN	204	251	204
SAN JOAQUIN	FRIANT	397	240	348

**STORAGE IN MAJOR RESERVOIRS IN THOUSANDS OF ACRE-FEET**

RESERVOIR	CAPACITY	15 YR AVG	WY 2020	WY 2021	% OF 15 YR AVG
TRINITY	2,448	1,354	1,397	754	56
SHASTA	4,552	2,334	2,238	1,111	48
FOLSOM	977	447	440	231	52
NEW MELONES	2,420	1,279	1,533	856	67
FED. SAN LUIS	966	276	337	30	11
TOTAL NORTH CVP	11,363	5,690	5,945	2,982	52
MILLERTON	520	272	175	276	101
OROVILLE (SWP)	3,538	1,610	1,666	788	49

**ACCUMULATED INFLOW FOR WATER YEAR TO DATE IN THOUSANDS OF ACRE-FEET**

RESERVOIR	CURRENT WY2021	WY 1977	WY 1983	15 YR AVG	% OF 15 YR AVG
TRINITY	331	217	2,878	1,020	32
SHASTA	2,411	2,543	10,707	4,667	52
FOLSOM	837	351	6,495	2,386	35
NEW MELONES	345	----	2,733	954	36
MILLERTON	651	364	4,640	1,478	44

**ACCUMULATED PRECIPITATION FOR WATER YEAR TO DATE IN INCHES**

RESERVOIR	CURRENT WY 2021	WY 1977	WY 1983	AVG (N YRS)	% OF AVG	LAST 24 HRS
TRINITY AT FISH HATCHERY	17.14	13.79	56.67	31.70 ( 59)	54	0.00
SACRAMENTO AT SHASTA DAM	24.79	24.37	114.50	61.60 ( 64)	40	0.00
AMERICAN AT BLUE CANYON	32.83	17.51	104.10	65.92 ( 46)	50	0.00
STANISLAUS AT NEW MELONES	16.82	----	46.38	27.27 ( 43)	62	0.00
SAN JOAQUIN AT HUNTINGTON LK	17.68	17.60	83.20	41.43 ( 46)	43	0.00

DATE	Mean Daily Water Temperatures (°F)														Mean Daily Release (CFS)			Mean Daily Air Temperatures (°F)		
	TCD <sup>1</sup>	SHD	SPP <sup>1</sup>	KWK	SAC <sup>2</sup>	CCR	BSF	JLF	BND	RDB	IGO	LWS	DGC <sup>3</sup>	NFH	Shasta Generation	Spring Creek P.P.	Keswick Total	RDD	BSF	RDB
Aug	54.1	53.4	-	55.0	55.5	56.2	57.4	58.6	59.5	60.7	57.1	50.4	-	59.5	5889	1760	8088	82.6	76.7	77.9
09/01	55.8	55.5	# -	56.0	56.6	57.3	58.5	59.5	60.5	61.5	56.6	51.0	# -	57.8	4786	1022	6826	75.0	69.5	70.3
09/02	56.0	55.6	# -	56.2	56.7	57.5	58.6	59.5	60.3	61.3	56.5	51.2	# -	59.3	5123	889	6824	72.0	67.4	68.6
09/03	55.9	55.5	# -	56.2	56.7	57.4	58.4	59.3	60.1	61.1	56.2	51.4	# -	58.0	5609	949	6823	74.0	68.9	69.5
09/04	56.0	55.6	# -	56.2	56.9	57.6	58.7	59.5	60.2	61.1	56.4	51.6	# -	56.4	5348	1093	6805	76.0	70.9	74.5
09/05	56.0	55.7	# -	56.3	56.9	57.7	58.7	59.6	60.4	61.4	56.5	51.9	# -	55.0	5686	1036	6798	78.0	71.1	74.7
09/06	55.9	55.6	# -	56.3	56.9	57.7	58.8	59.7	60.5	61.5	56.7	51.3	# -	54.1	5683	1034	6801	80.5	72.9	77.7
09/07	56.2	56.0	# -	56.4	57.1	58.0	59.2	60.2	61.0	61.9	57.3	50.7	# -	54.4	5635	1062	6860	85.0	77.5	83.4
09/08	56.3	55.8	# -	56.5	57.0	57.8	59.2	60.4	61.4	62.5	57.1	51.0	# -	54.9	5733	1208	6862	87.0	78.5	83.5
09/09	56.8	56.5	# -	56.4	56.9	57.5	58.7	59.7	60.6	61.8	57.0	51.0	# -	55.5	5058	1080	6821	83.5	77.2	80.1
09/10	56.4	56.4	# -	56.5	57.3	58.1	59.6	60.6	61.4	62.3	58.3	50.6	# -	56.8	5186	1087	6833	79.5	76.7	77.8
09/11	56.1	56.0	# -	56.8	57.5	58.2	59.7	60.8	61.7	63.0	57.7	50.8	# -	58.6	5311	1072	6824	80.5	74.6	76.1
09/12	56.8	57.0	# -	56.6	57.2	57.9	59.3	60.4	61.2	62.4	57.5	51.0	# -	59.0	4718	1786	6824	78.0	71.5	74.3
09/13	57.2	57.4	# -	56.7	57.3	57.9	59.2	60.1	60.9	61.9	57.6	51.1	# -	58.6	4632	1803	6818	81.0	73.8	76.9
09/14	57.4	58.2	# -	56.9	57.5	58.1	59.3	60.2	61.0	61.9	57.7	50.9	# -	58.6	4821	1795	6817	83.0	74.9	78.0
09/15	57.5	58.2	# -	57.1	57.7	58.3	59.5	60.5	61.3	62.2	57.5	51.0	# -	58.4	4925	1668	6824	79.5	72.9	74.8
09/16	58.3	57.8	# -	57.1	57.7	58.4	59.6	60.4	61.1	62.1	57.3	51.1	# -	58.9	4605	1688	6820	76.0	70.5	71.2
09/17	58.3	57.4	# -	57.1	57.6	58.2	59.3	60.2	61.0	61.9	56.9	51.5	# -	59.1	4614	1697	6821	73.0	68.9	71.2
09/18	58.0	56.9	# -	57.3	57.5	57.6	58.5	59.2	60.0	60.8	56.0	51.2	# -	57.8	5157	1733	6822	66.0	61.9	64.0
09/19	58.1	57.1	# -	57.0	57.6	58.2	59.1	59.5	60.0	60.2	56.8	51.2	# -	57.7	5204	1680	6843	69.0	66.2	69.1
09/20	58.9	57.9	# -	57.2	57.7	58.1	59.0	59.6	60.3	61.0	56.5	51.5	# -	58.2	4561	1712	6830	79.5	74.3	76.6
09/21	58.9	58.1	# -	57.4	57.9	58.4	59.4	60.0	60.6	61.2	56.6	51.8	# -	58.4	4743	1861	6852	75.5	69.5	73.2
09/22																				
09/23																				
09/24																				
09/25																				
09/26																				
09/27																				
09/28																				
09/29																				
09/30																				
-																				
Sep	57.0	56.7	-	56.7	57.3	57.9	59.1	60.0	60.7	61.7	57.0	51.2	-	57.4	5102	1379	6826	77.7	71.9	74.6

Total CFS	107138	28955	143348
Total AF	212504	57431	284325

**Legend**

- ? = 1-9 hours of data missing (Average includes estimations)
- ! = 10 or more hours of data missing (Average not calculated)
- # = Station out of service
- ↑ = Record high air temperature
- ↓ = Record low air temperature
- ☐ = Monthly Averages

**Notes**

- <sup>1</sup> Temperatures are weighted averages based on individual penstock flow and temperature  
Highlighted cells in the TCD column indicate a TCD change was made on that day
- <sup>2</sup> Current Sacramento River control point (see page 4 for more details)
- <sup>3</sup> Data is currently being collected locally and periodically downloaded.  
Once downloaded and certified by USGS, missing data will be added.

D A T E	Redding (RDD) Daily Air Temperatures (°F)																																				
	Actual			Forecasted																																	
	Previous Day			Current Day			1 Day			2 Days			3 Days			4 Days			5 Days			6 Days			7 Days			8 Days			9 Days			10 Days			
	↓	↑	Avg	↓	↑	Avg	↓	↑	Avg	↓	↑	Avg	↓	↑	Avg	↓	↑	Avg	↓	↑	Avg	↓	↑	Avg	↓	↑	Avg	↓	↑	Avg	↓	↑	Avg	↓	↑	Avg	
09/01	62	98	80.0	60	89	74.5	53	90	71.5	56	95	75.5	58	96	77.0	60	100	80.0	61	100	80.5	64	99	81.5	68	100	84.0	62	90	76.0	61	90	75.5	58	89	73.5	
09/02	60	90	75.0	56	92	74.0	57	97	77.0	57	99	78.0	61	102	81.5	64	103	83.5	67	98	82.5	63	97	80.0	64	99	81.5	63	93	78.0	60	90	75.0	59	90	74.5	
09/03	55	89	72.0	55	95	75.0	57	99	78.0	58	103	80.5	60	105	82.5	69	99	84.0	64	98	81.0	61	97	79.0	64	95	79.5	61	85	73.0	60	87	73.5	57	90	73.5	
09/04	54	94	74.0	54	99	76.5	57	103	80.0	60	105	82.5	62	98	80.0	61	96	78.5	59	93	76.0	58	92	75.0	64	92	78.0	61	94	77.5	61	92	76.5	60	93	76.5	
09/05	53	99	76.0	56	101	78.5	59	103	81.0	62	102	82.0	63	98	80.5	62	92	77.0	61	86	73.5	57	88	72.5	68	100	84.0	63	99	81.0	60	93	76.5	59	91	75.0	
09/06	55	101	78.0	58	102	80.0	61	104	82.5	66	104	85.0	66	103	84.5	64	97	80.5	61	94	77.5	58	90	74.0	62	94	78.0	63	93	78.0	62	88	75.0	59	92	75.5	
09/07	57	104	80.5	63	106	84.5	67	105	86.0	67	103	85.0	63	100	81.5	60	96	78.0	58	94	76.0	60	94	77.0	59	95	77.0	58	99	78.5	60	93	76.5	57	91	74.0	
09/08	63	107	85.0	70	104	87.0	66	100	83.0	61	89	75.0	58	93	75.5	57	93	75.0	56	93	74.5	56	92	74.0	61	96	78.5	60	95	77.5	58	89	73.5	58	92	75.0	
09/09	69	105	87.0	69	100	84.5	68	92	80.0	57	94	75.5	57	94	75.5	58	95	76.5	58	97	77.5	58	95	76.5	63	94	78.5	59	87	73.0	56	85	70.5	55	86	70.5	
09/10	68	99	83.5	69	89	79.0	59	92	75.5	57	95	76.0	58	96	77.0	60	98	79.0	59	93	76.0	58	91	74.5	60	87	73.5	60	83	71.5	58	87	72.5	57	90	73.5	
09/11	69	90	79.5	67	91	79.0	57	93	75.0	59	96	77.5	62	100	81.0	60	94	77.0	58	92	75.0	54	87	70.5	60	80	70.0	58	84	71.0	58	86	72.0	54	89	71.5	
09/12	65	96	80.5	61	95	78.0	59	95	77.0	62	99	80.5	60	95	77.5	59	93	76.0	55	86	70.5	53	83	68.0	61	75	68.0	56	80	68.0	55	85	70.0	56	88	72.0	
09/13	60	96	78.0	62	99	80.5	63	102	82.5	60	94	77.0	57	89	73.0	56	85	70.5	55	79	67.0	52	80	66.0	60	90	75.0	62	96	79.0	62	93	77.5	59	91	75.0	
09/14	62	100	81.0	60	103	81.5	60	94	77.0	57	88	72.5	56	89	72.5	57	80	68.5	54	79	66.5	52	82	67.0	60	91	75.5	57	91	74.0	56	85	70.5	57	87	72.0	
09/15	60	106	83.0	63	97	80.0	56	91	73.5	55	91	73.0	55	83	69.0	55	73	64.0	47	80	63.5	53	87	70.0	57	89	73.0	58	88	73.0	55	87	71.0	57	87	72.0	
09/16	63	96	79.5	60	92	76.0	55	92	73.5	54	80	67.0	54	74	64.0	50	81	65.5	54	87	70.5	53	88	70.5	59	90	74.5	57	96	76.5	61	93	77.0	59	90	74.5	
09/17	59	93	76.0	57	90	73.5	53	77	65.0	52	75	63.5	51	87	69.0	55	91	73.0	56	90	73.0	55	90	72.5	63	96	79.5	59	96	77.5	56	84	70.0	56	87	71.5	
09/18	55	91	73.0	61	72	66.5	51	76	63.5	53	89	71.0	55	91	73.0	58	90	74.0	53	92	72.5	57	95	76.0	58	95	76.5	57	94	75.5	58	90	74.0	56	90	73.0	
09/19	60	72	66.0	58	78	68.0	55	91	73.0	57	92	74.5	56	90	73.0	57	93	75.0	59	95	77.0	57	92	74.5	60	93	76.5	58	95	76.5	58	90	74.0	56	90	73.0	
09/20	58	80	69.0	66	90	78.0	58	92	75.0	56	90	73.0	55	96	75.5	59	97	78.0	58	93	75.5	59	89	74.0	61	90	75.5	59	91	75.0	58	87	72.5	56	88	72.0	
09/21	66	93	79.5	59	96	77.5	59	91	75.0	59	94	76.5	61	97	79.0	58	93	75.5	57	91	74.0	55	87	71.0	59	88	73.5	59	84	71.5	57	85	71.0	56	88	72.0	
09/22	56	95	75.5	60	93	76.5	60	94	77.0	59	96	77.5	58	93	75.5	56	88	72.0	53	84	68.5	53	79	66.0	58	77	67.5	57	82	69.5	56	81	68.5	55	85	70.0	
09/23																																					
09/24																																					
09/25																																					
09/26																																					
09/27																																					
09/28																																					
09/29																																					
09/30																																					
-																																					

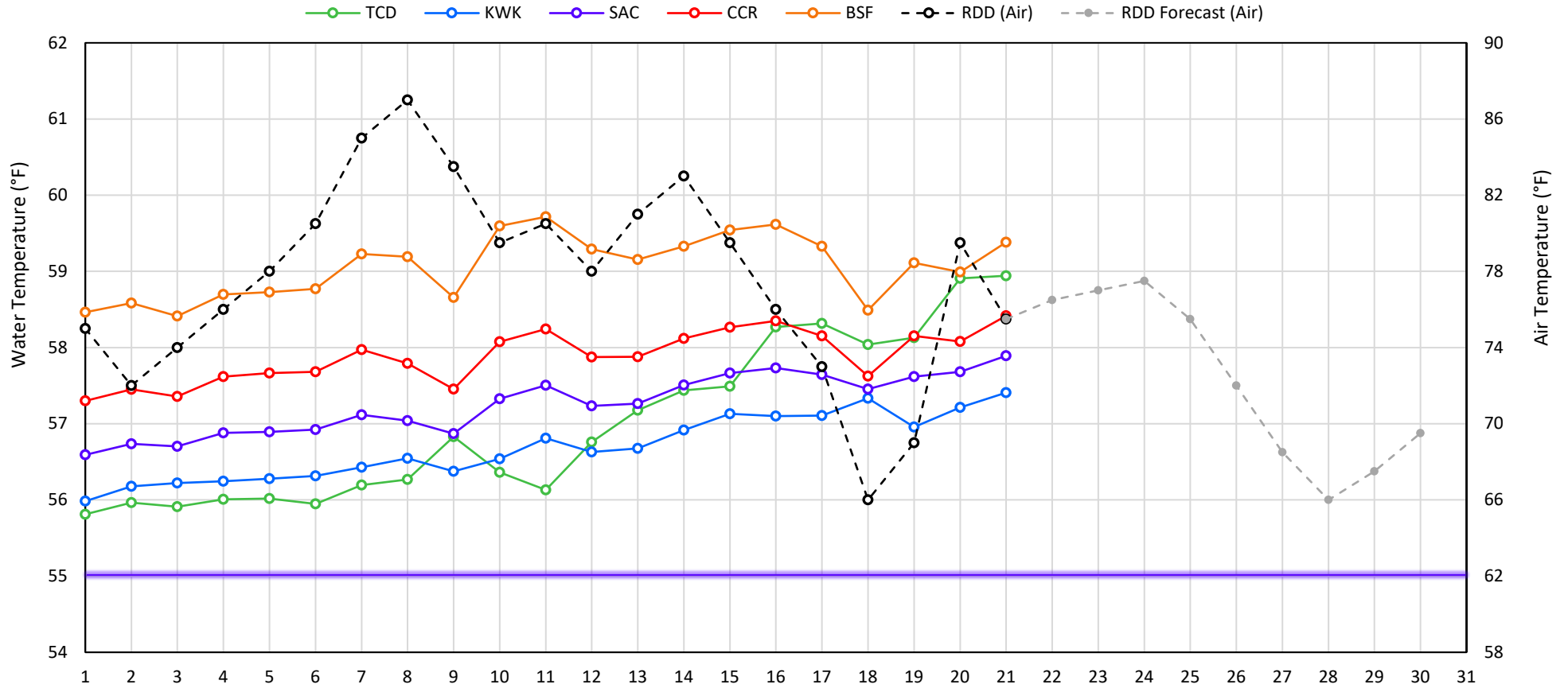
Web Links

- [10-Day Min/Max Forecast](#)
- [Previous Days Min/Max Actuals](#)

Legend

- NR = Forecasted temperatures not recorded
- 100** = Previous day actual temperatures in red and bolded indicate a record temperature for that date

## Mean Daily Temperatures



### Station Details

Code	Body of Water	Location <sup>1</sup>	CDEC Link
TCD	N/A	Shasta Power Plant	N/A
SHD	Sacramento River	0.3 miles downstream of Shasta Power Plant	<a href="#">Click Here</a>
SPP	N/A	Spring Creek Power Plant	N/A
KWK	Sacramento River	0.8 miles downstream of Keswick Dam	<a href="#">Click Here</a>
SAC	Sacramento River	4.8 miles downstream of Keswick Dam	<a href="#">Click Here</a>
CCR	Sacramento River	9.7 miles downstream of Keswick Dam	<a href="#">Click Here</a>
BSF	Sacramento River	25 miles downstream of Keswick Dam	<a href="#">Click Here</a>
JLF	Sacramento River	34 miles downstream of Keswick Dam	<a href="#">Click Here</a>
BND	Sacramento River	41 miles downstream of Keswick Dam	<a href="#">Click Here</a>
RDB	Sacramento River	58 miles downstream of Keswick Dam	<a href="#">Click Here</a>
IGO	Clear Creek	7.3 miles downstream of Whiskeytown Dam	<a href="#">Click Here</a>
LWS	Trinity River	1.1 miles downstream of Lewiston Dam	<a href="#">Click Here</a>
DGC	Trinity River	19 miles downstream of Lewiston Dam	<a href="#">Click Here</a>
NFH	Trinity River	38 miles downstream of Lewiston Dam	<a href="#">Click Here</a>

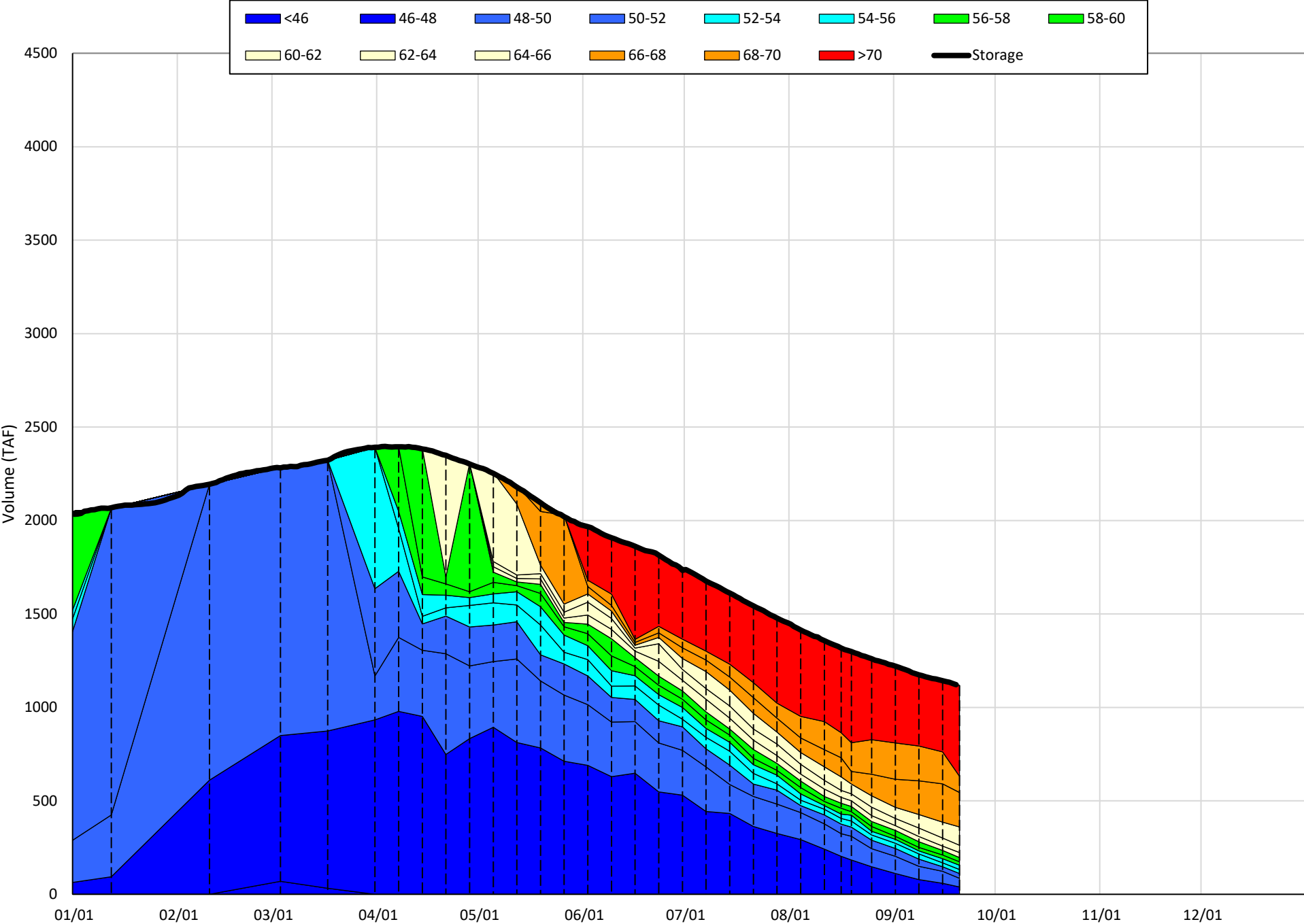
### Water Right Temperature Control Points

River	Point	Temp. (°F)	Begin Date	End Date
Sacramento	CCR	56	09/21/2020	04/18/2021
Sacramento	CCR	60	04/18/2021	05/17/2021
Sacramento	SAC	57	05/17/2021	06/15/2021
<b>Sacramento</b>	<b>SAC</b>	<b>55</b>	<b>06/15/2021</b>	<b>TBD</b>
Trinity	DGC	56	09/15/2021	10/01/2021
Trinity	NFH	56	10/01/2021	12/31/2021

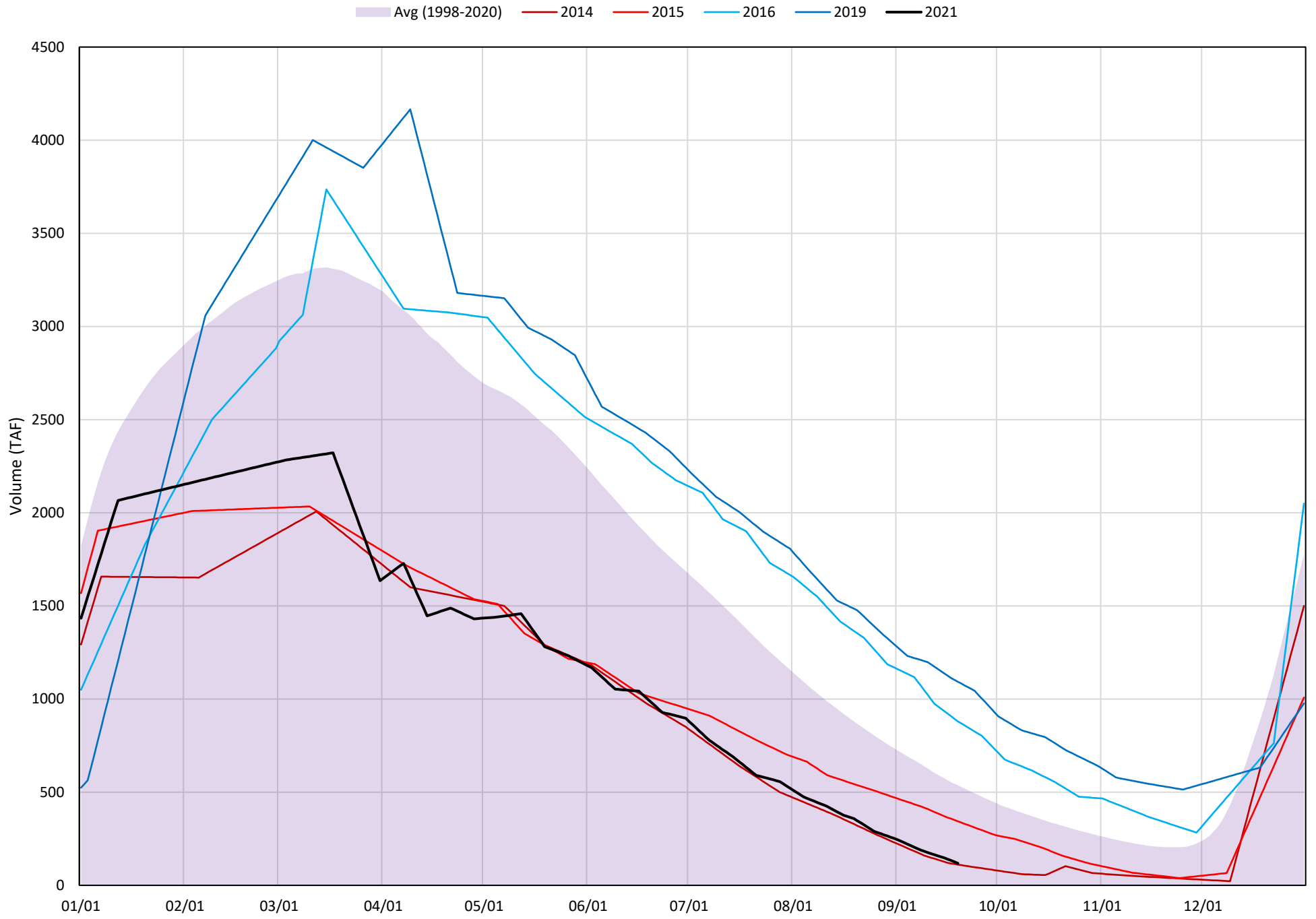
### Notes

<sup>1</sup> Distances are approximate

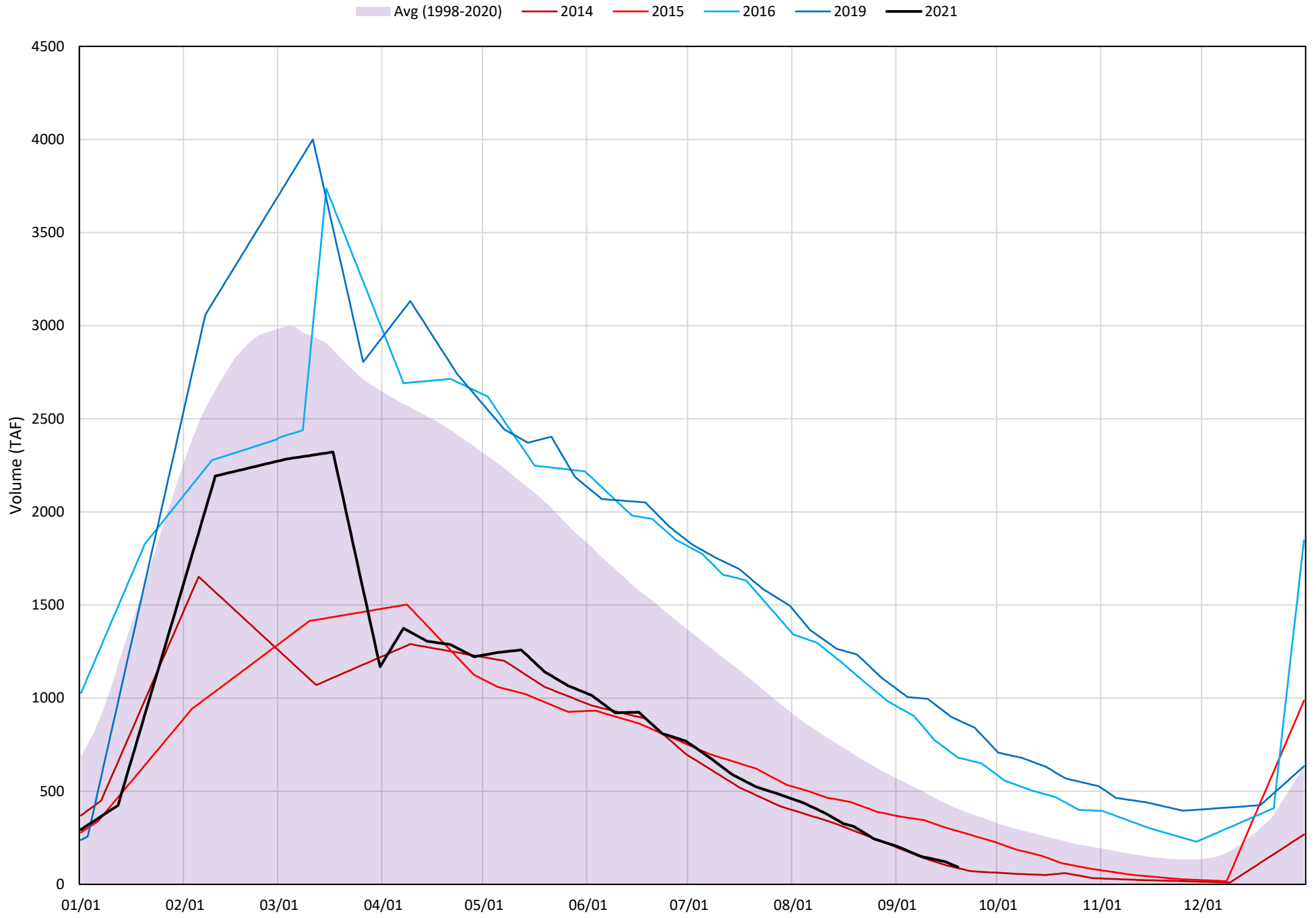
Shasta Lake Isothermobaths Plot - 2021



# Shasta Lake Cold Water Pool Volume $\leq 52^{\circ}\text{F}$



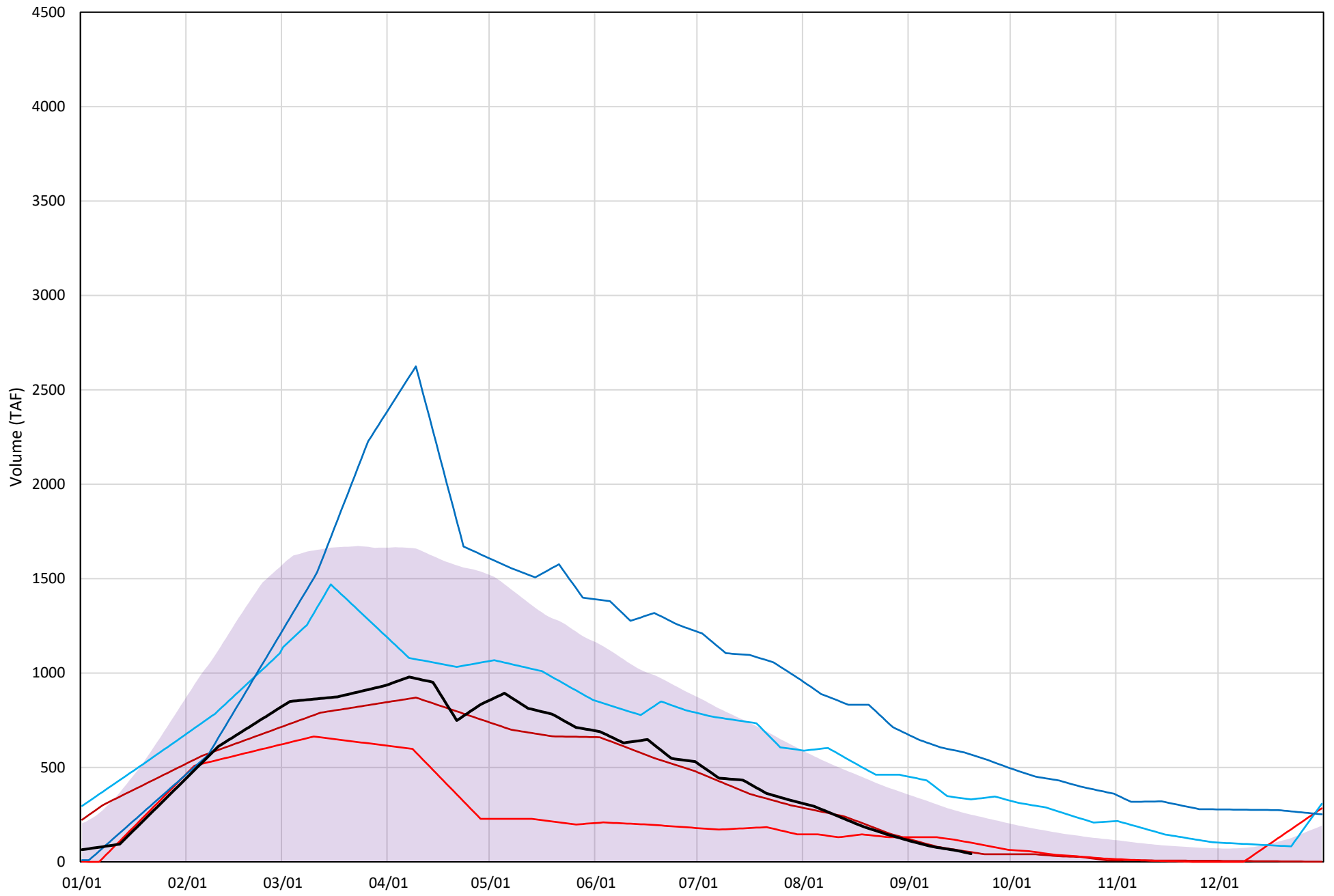
# Shasta Lake Cold Water Pool Volume $\leq 50^{\circ}\text{F}$





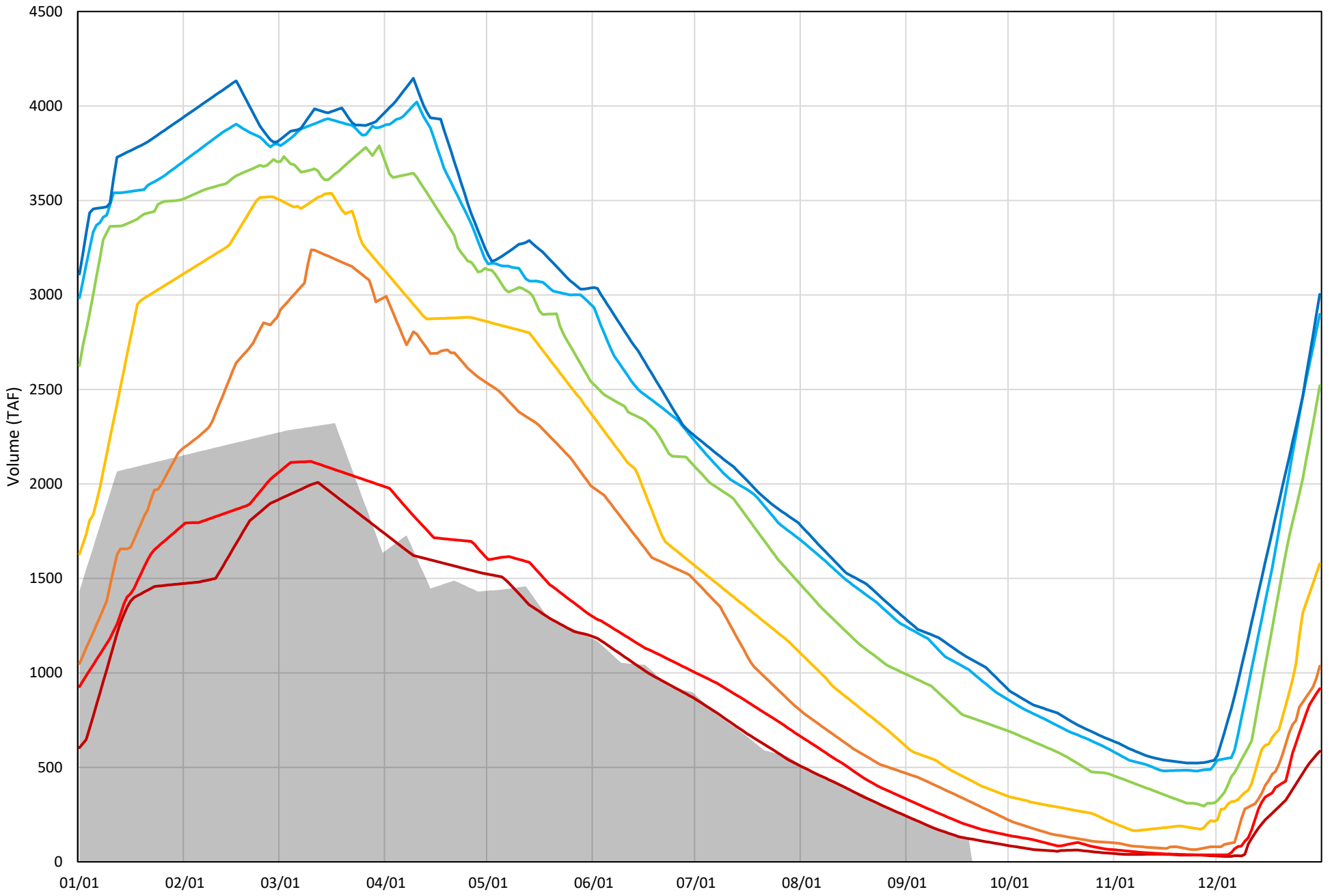
# Shasta Lake Cold Water Pool Volume $\leq 48^\circ\text{F}$

Avg (1998-2020) 2014 2015 2016 2019 2021



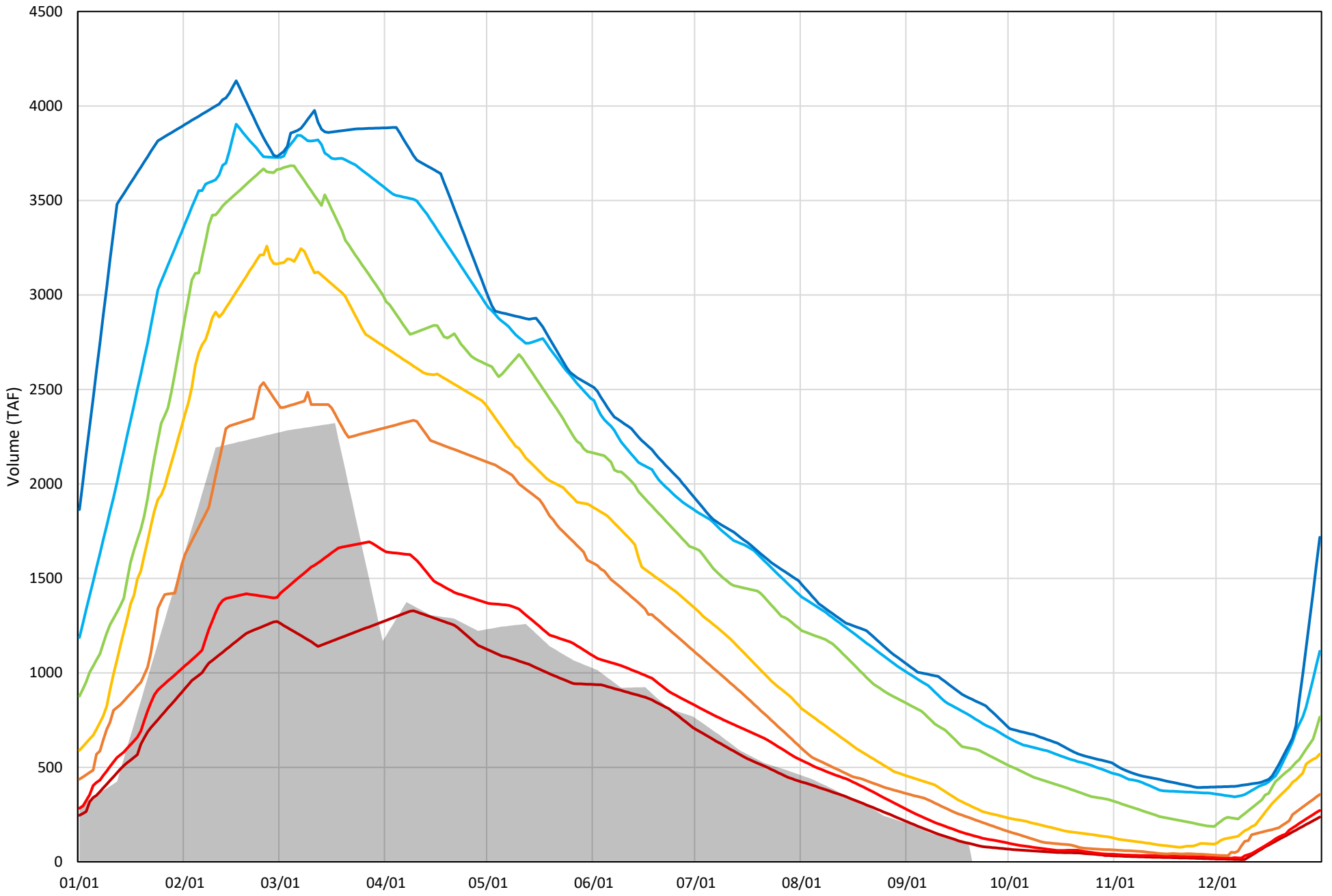
Shasta Lake Cold Water Pool Volume  $\leq 52^{\circ}\text{F}$  - Percent Exceedances (1998-2020)

2021 95 90 75 50 25 10 5



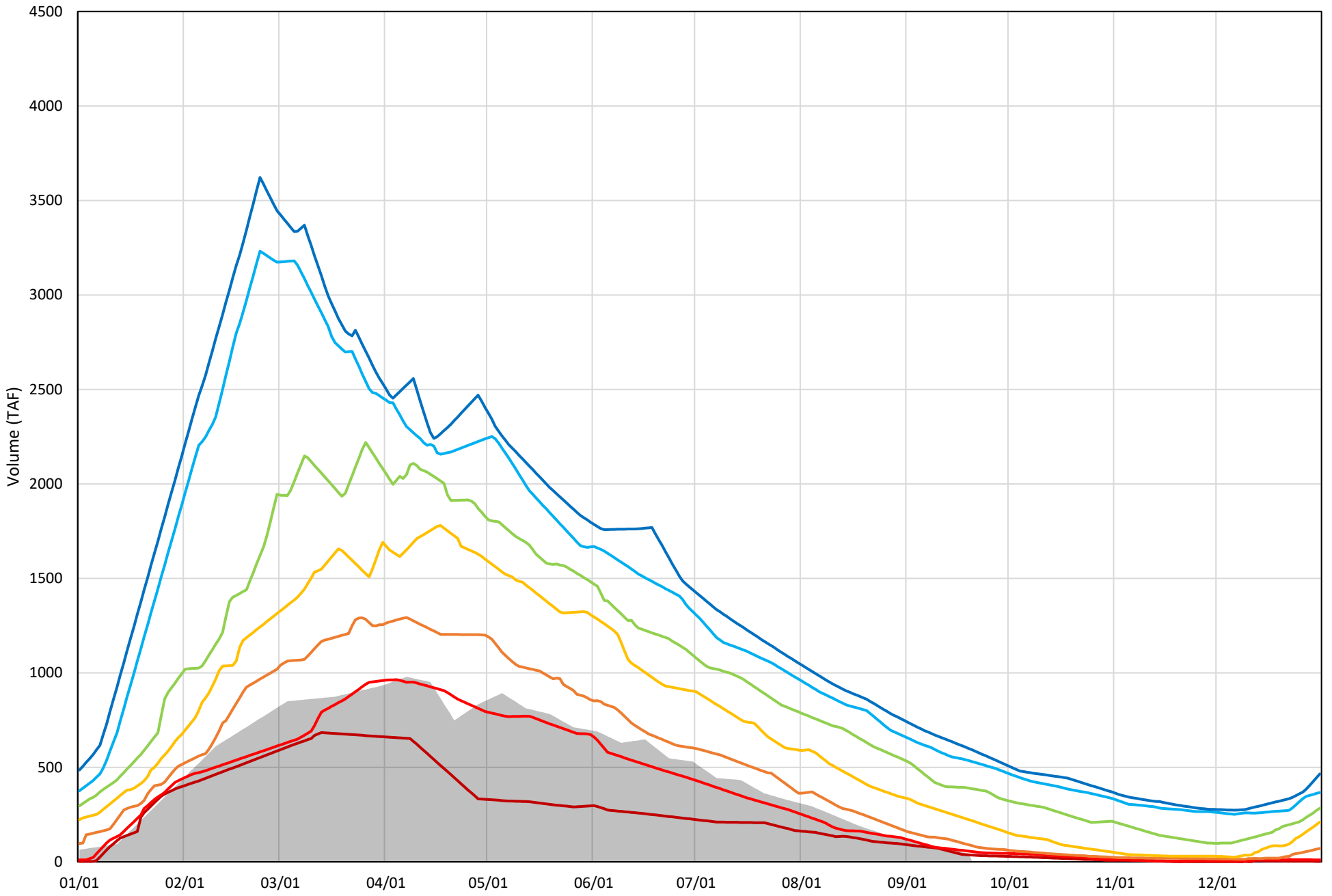
Shasta Lake Cold Water Pool Volume  $\leq 50^{\circ}\text{F}$  - Percent Exceedances (1998-2020)

2021 95 90 75 50 25 10 5




Shasta Lake Cold Water Pool Volume  $\leq 48^{\circ}\text{F}$  - Percent Exceedances (1998-2020)

2021 95 90 75 50 25 10 5




### Shasta Lake Cold Water Pool Comparison by Year (for Specified Date)

Sep-20 2021	$\Delta$ TAF				% $\Delta$			
	$\leq 52^\circ$	$\leq 50^\circ$	$\leq 48^\circ$	Abs. Avg.	$\leq 52^\circ$	$\leq 50^\circ$	$\leq 48^\circ$	Abs. Avg.
1998	221	71	-9	100	186	76	-22	95
1999	649	510	410	523	548	550	954	684
2000	293	159	31	161	248	171	72	164
2001	244	201	180	208	206	216	419	281
2002	436	364	350	383	368	393	815	525
2003	426	185	21	211	360	200	49	203
2004	110	60	47	72	93	65	110	89
2005	163	91	40	98	138	98	92	109
2006	469	367	260	365	396	396	604	465
2007	203	173	154	177	172	186	358	239
2008	52	48	60	53	44	52	139	78
2009	173	142	127	147	146	153	296	198
2010	748	529	310	529	632	570	721	641
2011	905	719	565	730	765	776	1315	952
2012	582	487	347	472	491	525	808	608
2013	317	294	261	291	268	317	609	398
2014	-7	-6	8	7	-6	-6	20	11
2015	225	193	58	159	190	208	136	178
2016	762	588	288	546	643	634	670	649
2017	889	635	443	656	751	684	1033	823
2018	474	400	211	362	401	432	491	441
2019	974	790	525	763	823	852	1222	966
2020	314	208	78	200	265	224	181	224
2021	0	0	0	0	0	0	0	0

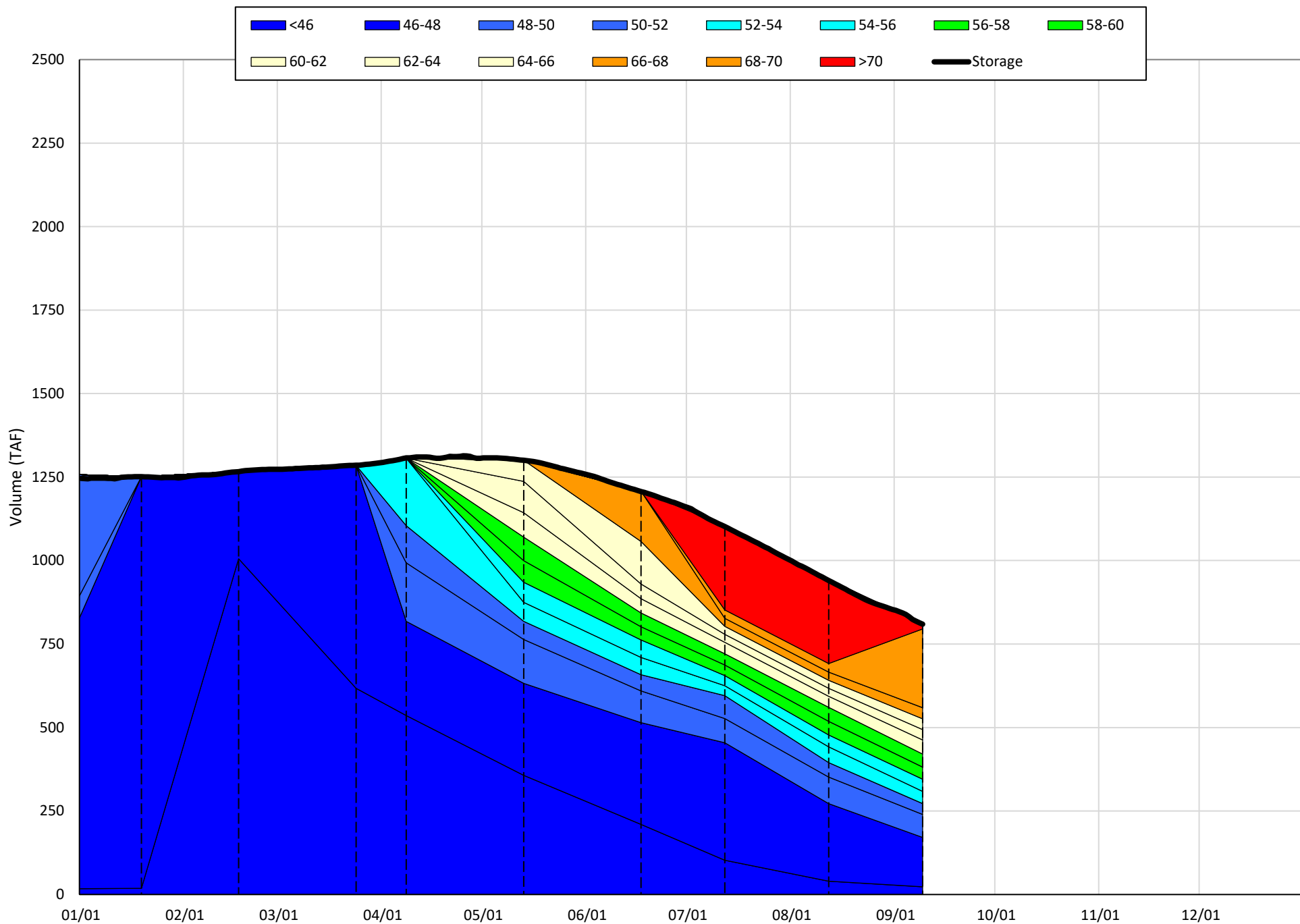


Historic - Current



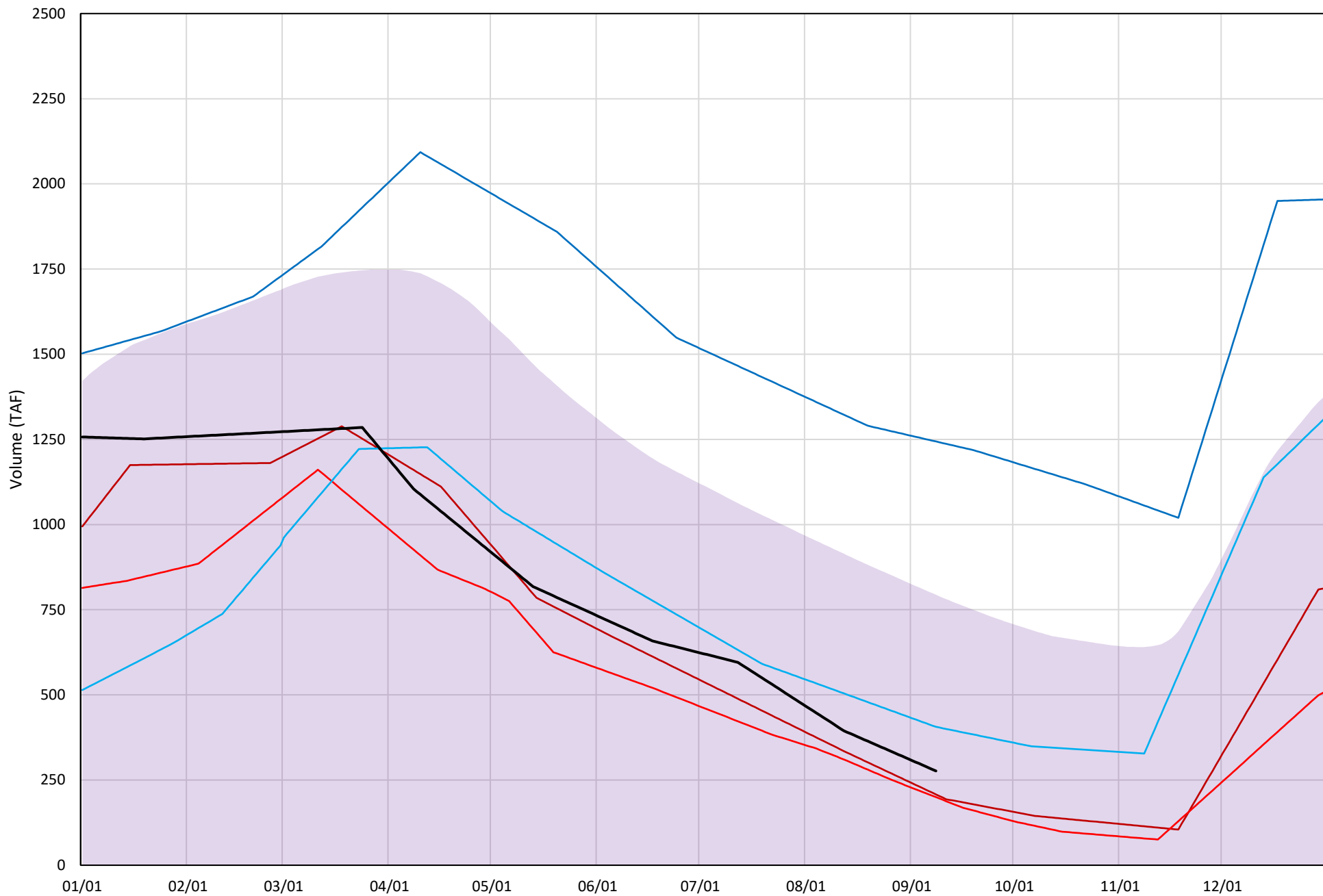
(Historic - Current) / Current

Trinity Lake Isothermobaths Plot - 2021



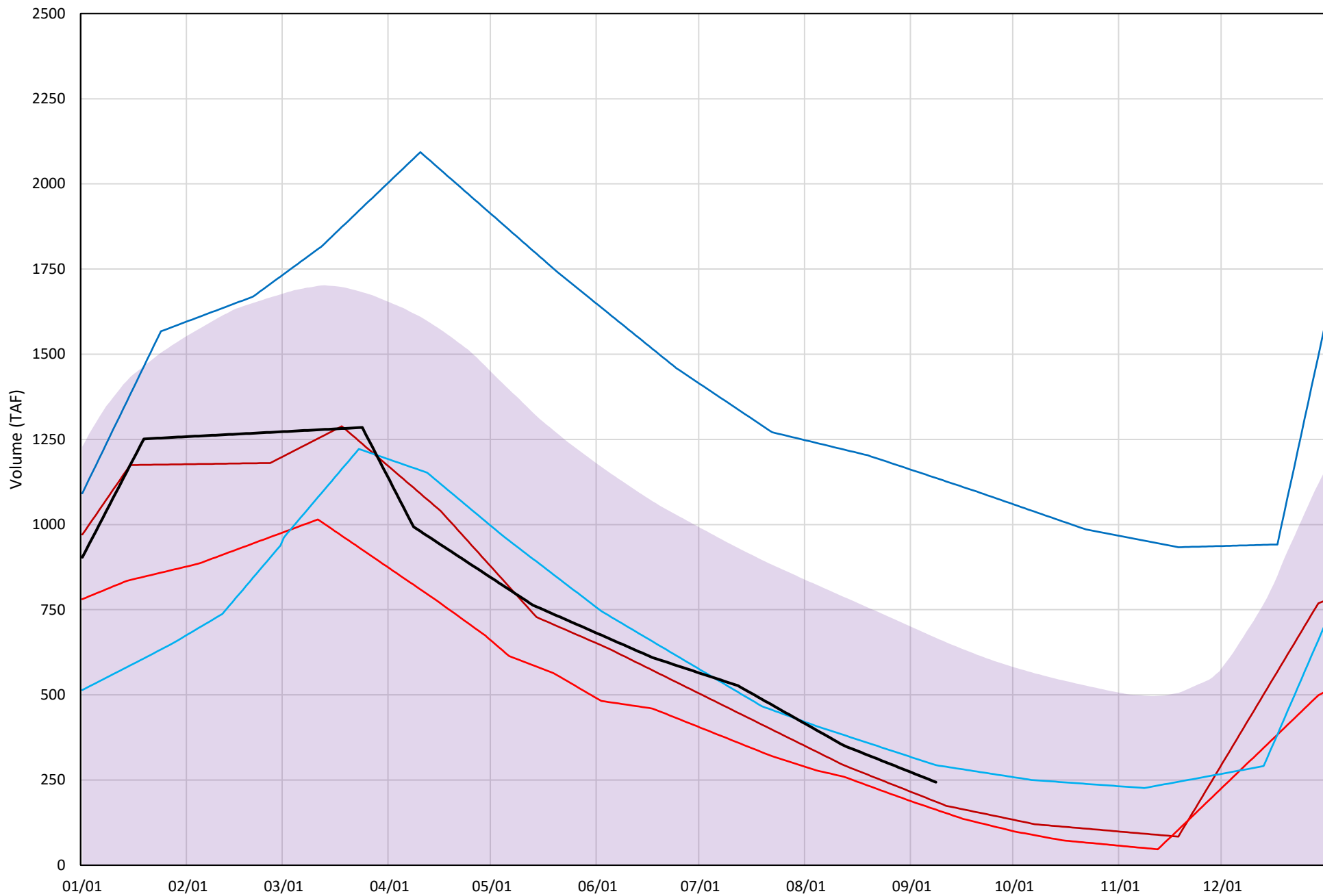
# Trinity Lake Cold Water Pool Volume $\leq 52^{\circ}\text{F}$

Avg (2000-2020) 2014 2015 2016 2019 2021



# Trinity Lake Cold Water Pool Volume $\leq 50^{\circ}\text{F}$

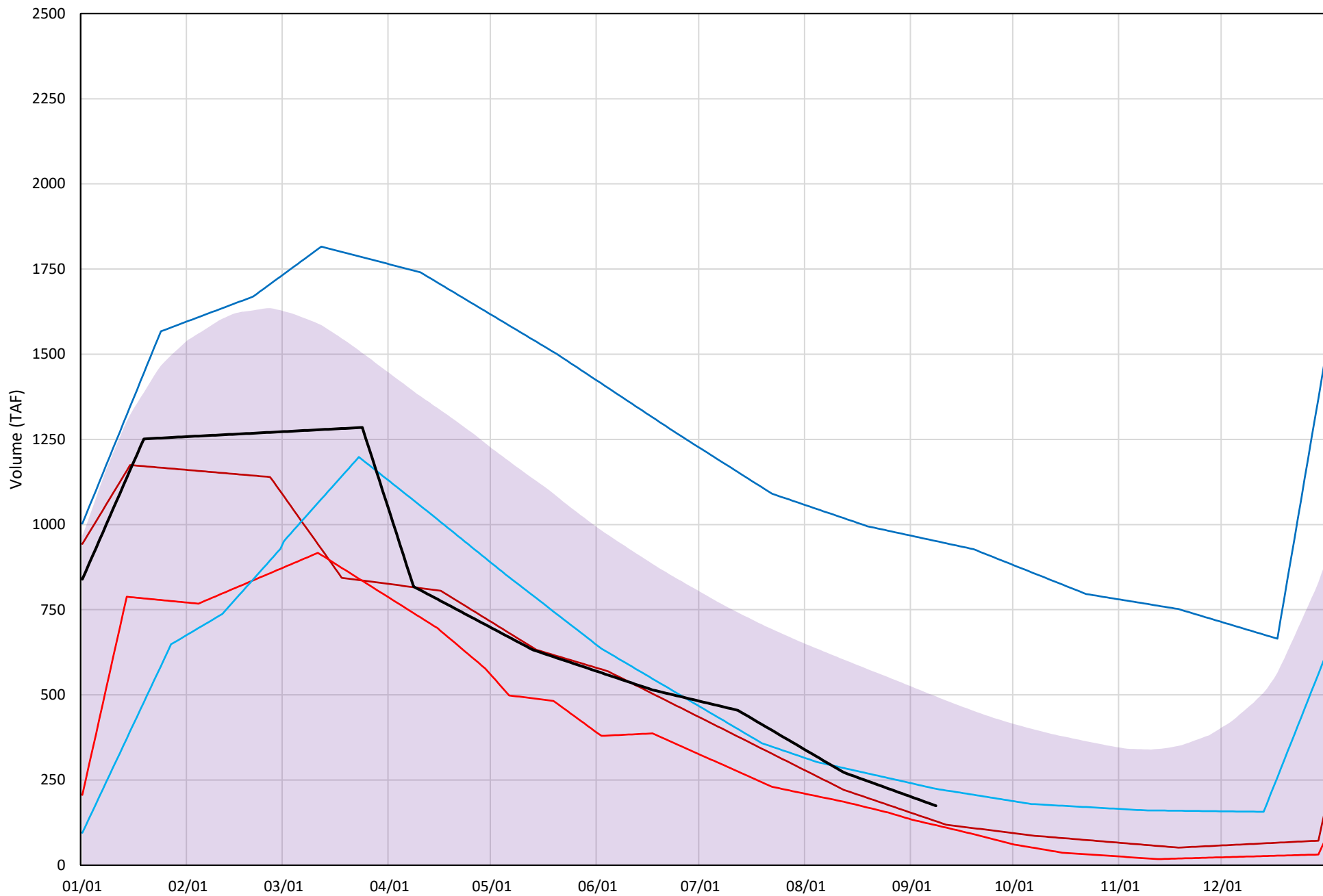
Avg (2000-2020) 2014 2015 2016 2019 2021



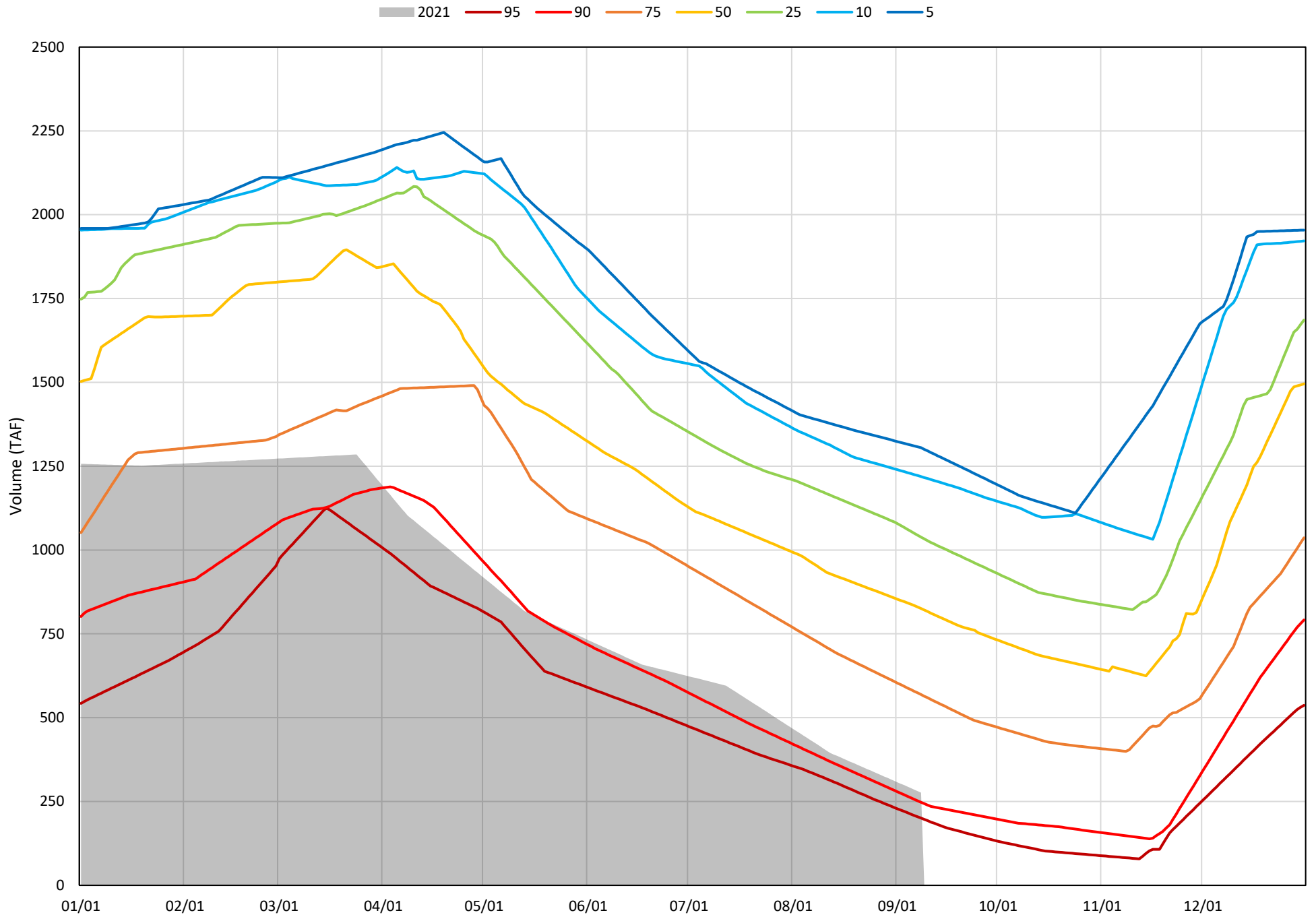


# Trinity Lake Cold Water Pool Volume $\leq 48^{\circ}\text{F}$

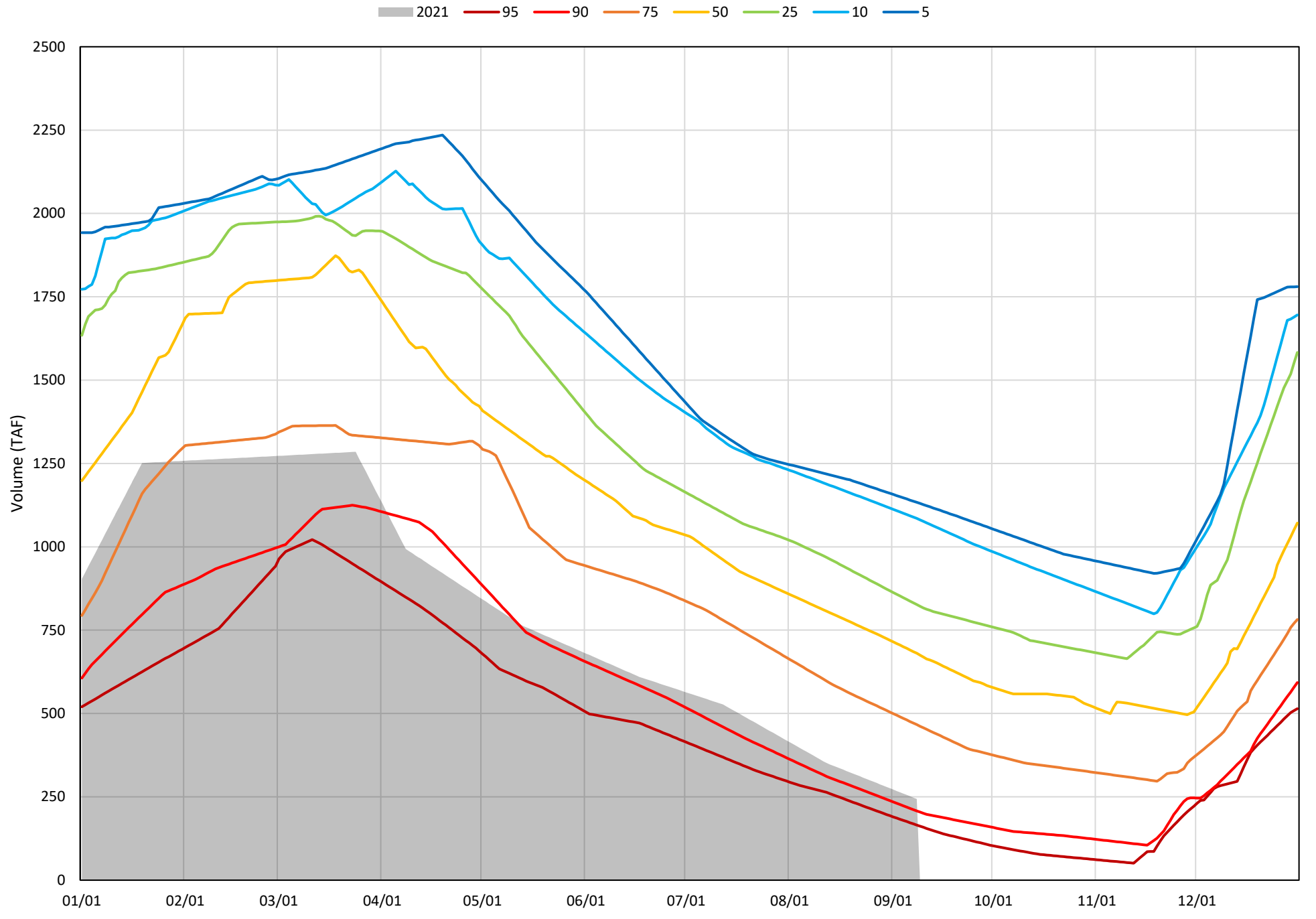
Avg (2000-2020) 2014 2015 2016 2019 2021



Trinity Lake Cold Water Pool Volume ≤52°F - Percent Exceedances (2000-2020)

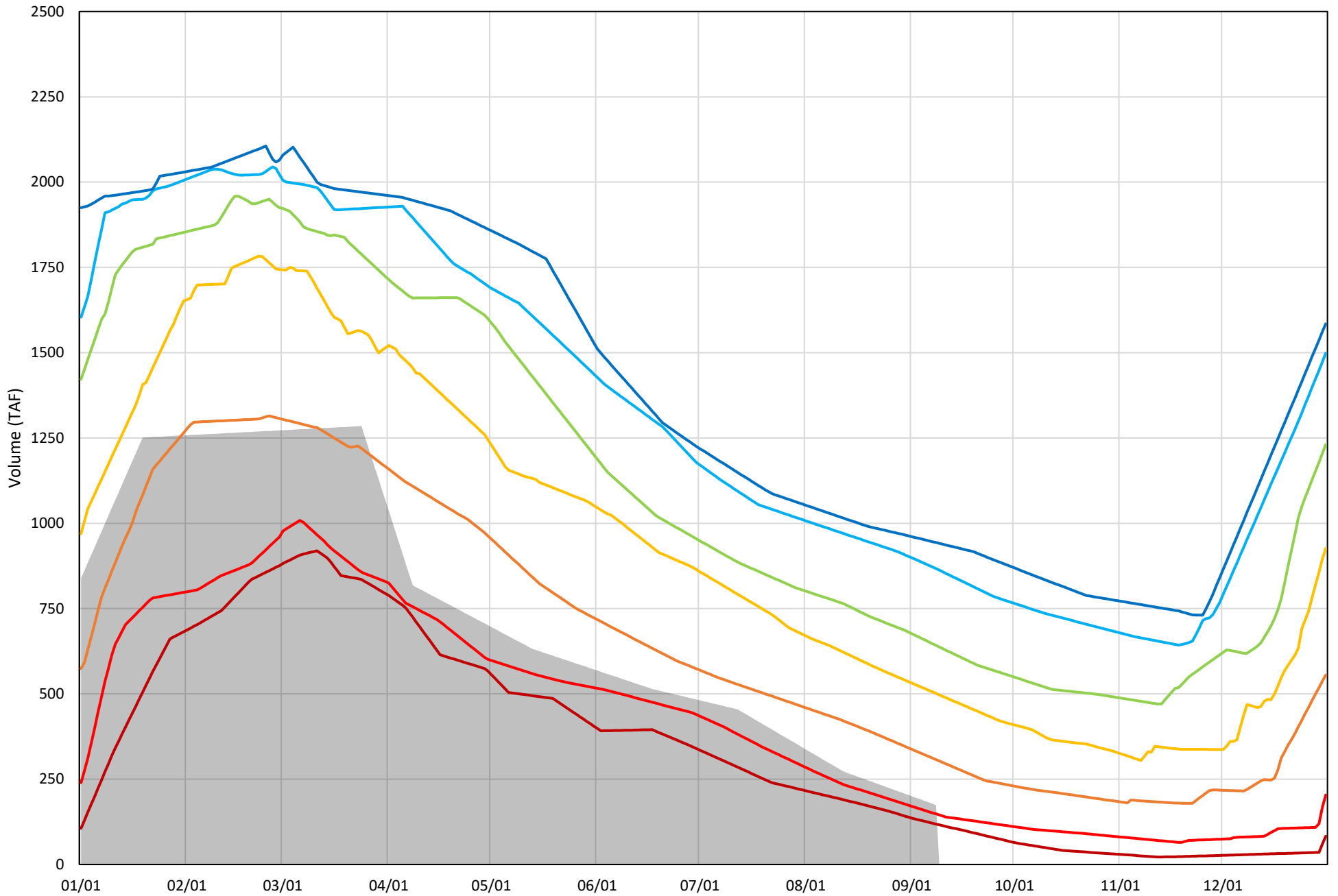


Trinity Lake Cold Water Pool Volume  $\leq 50^{\circ}\text{F}$  - Percent Exceedances (2000-2020)



Trinity Lake Cold Water Pool Volume  $\leq 48^{\circ}\text{F}$  - Percent Exceedances (2000-2020)

2021 95 90 75 50 25 10 5



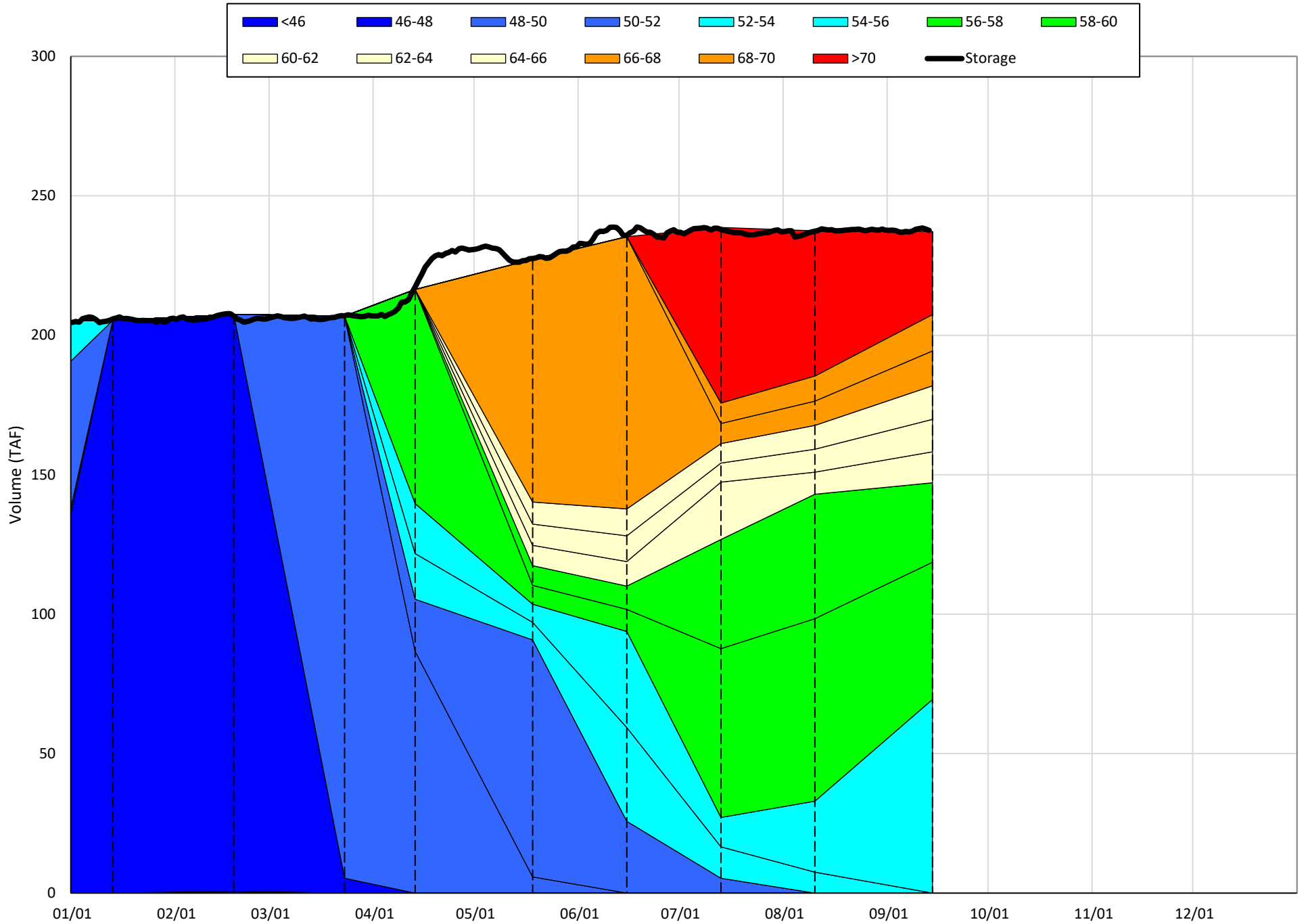
### Trinity Cold Water Pool Comparison by Year (for Specified Date)

Sep-09 2021	Δ TAF				% Δ			
	≤52°	≤50°	≤48°	Abs. Avg.	≤52°	≤50°	≤48°	Abs. Avg.
2000	607	437	298	447	219	179	171	190
2001	483	412	327	407	174	169	187	177
2002	494	437	383	438	179	179	219	192
2003	793	585	389	589	286	240	223	250
2004	550	430	276	419	199	176	158	178
2005	731	579	298	536	264	237	171	224
2006	843	697	505	682	305	286	289	293
2007	549	484	430	488	198	198	247	214
2008	239	152	90	160	86	63	52	67
2009	164	120	52	112	59	49	30	46
2010	540	381	176	366	195	156	101	151
2011	1035	861	676	857	374	353	387	371
2012	814	764	697	759	294	313	400	336
2013	346	293	228	289	125	120	131	125
2014	-69	-57	-45	57	-25	-24	-26	25
2015	-77	-81	-57	72	-28	-33	-33	31
2016	129	50	50	76	47	20	29	32
2017	664	483	348	498	240	198	199	212
2018	636	581	505	574	230	239	290	253
2019	967	893	777	879	349	366	445	387
2020	422	398	338	386	153	163	194	170
2021	0	0	0	0	0	0	0	0

Historic - Current

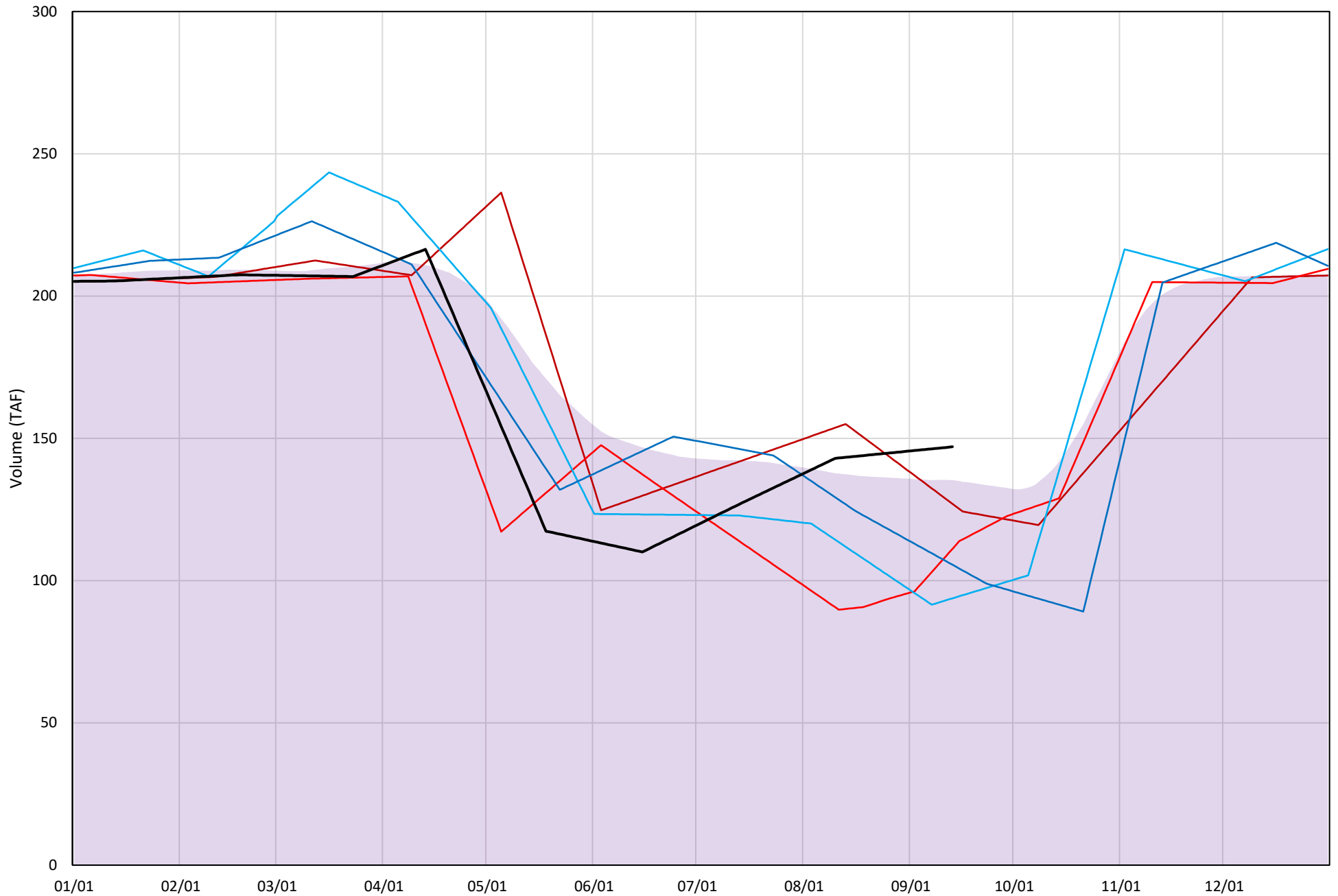
(Historic - Current) / Current

# Whiskeytown Lake Isothermobaths Plot - 2021



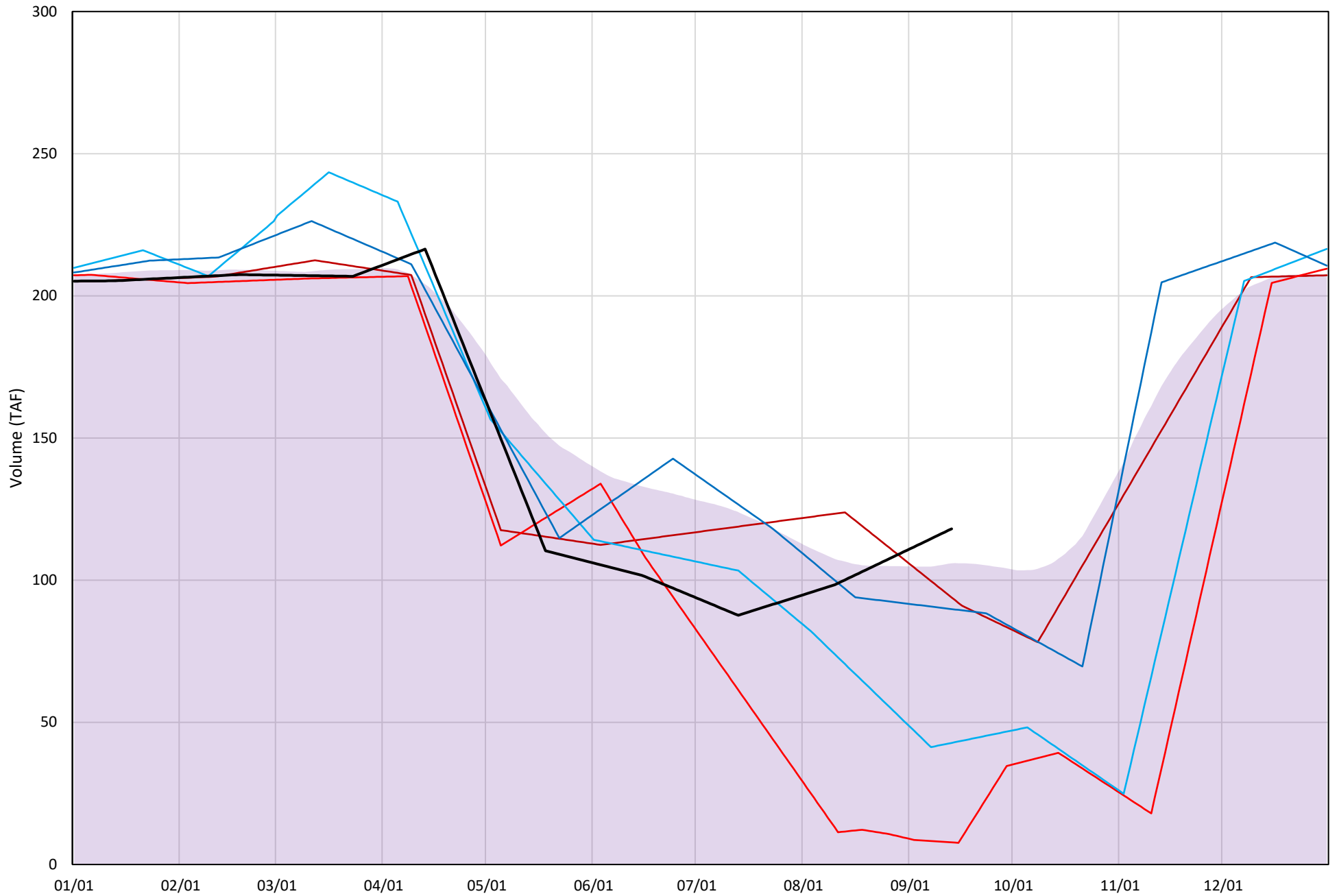
# Whiskeytown Lake Cold Water Pool Volume $\leq 60^{\circ}\text{F}$

Avg (2000-2020) 2014 2015 2016 2019 2021



# Whiskeytown Lake Cold Water Pool Volume $\leq 58^{\circ}\text{F}$

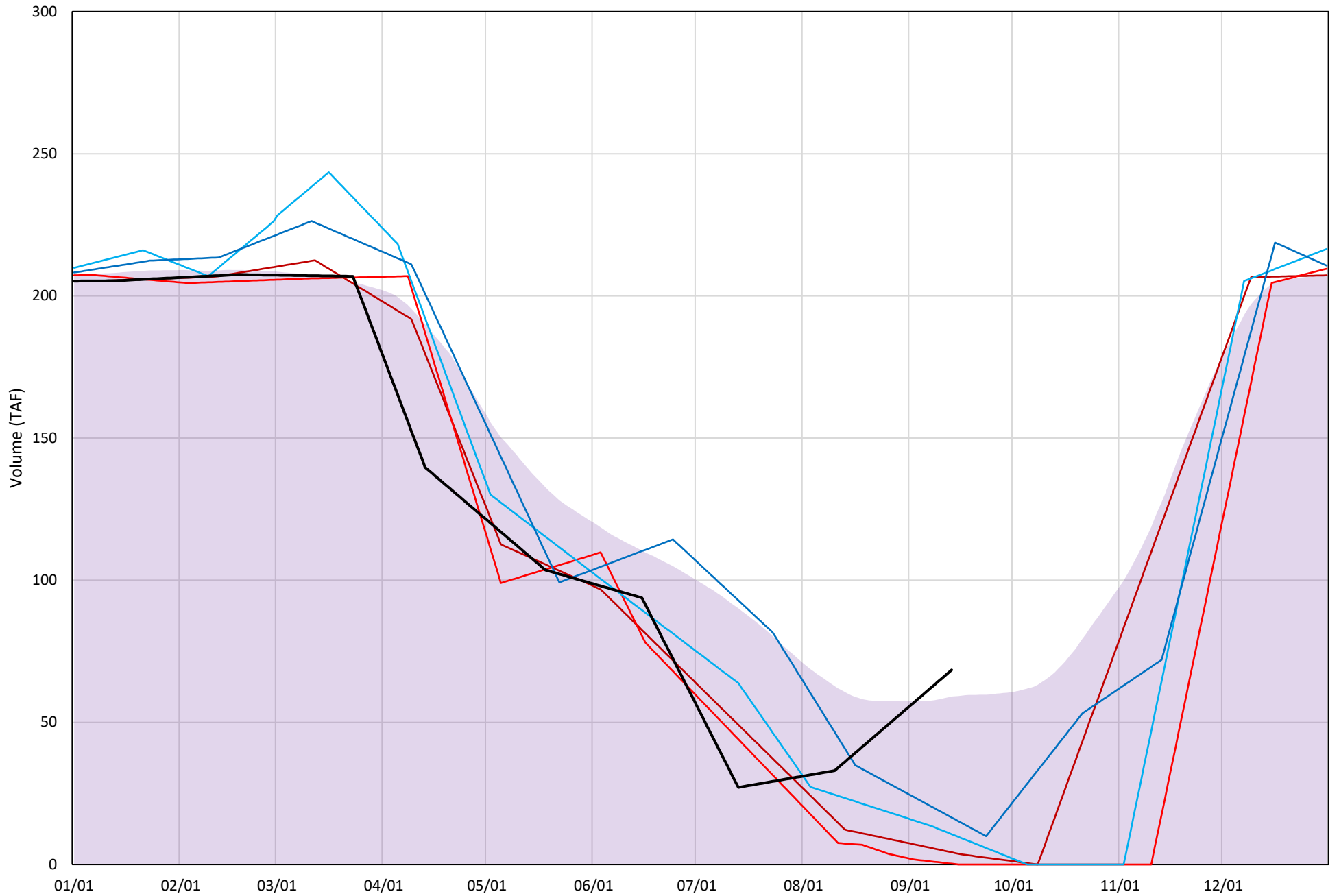
Avg (2000-2020) 2014 2015 2016 2019 2021



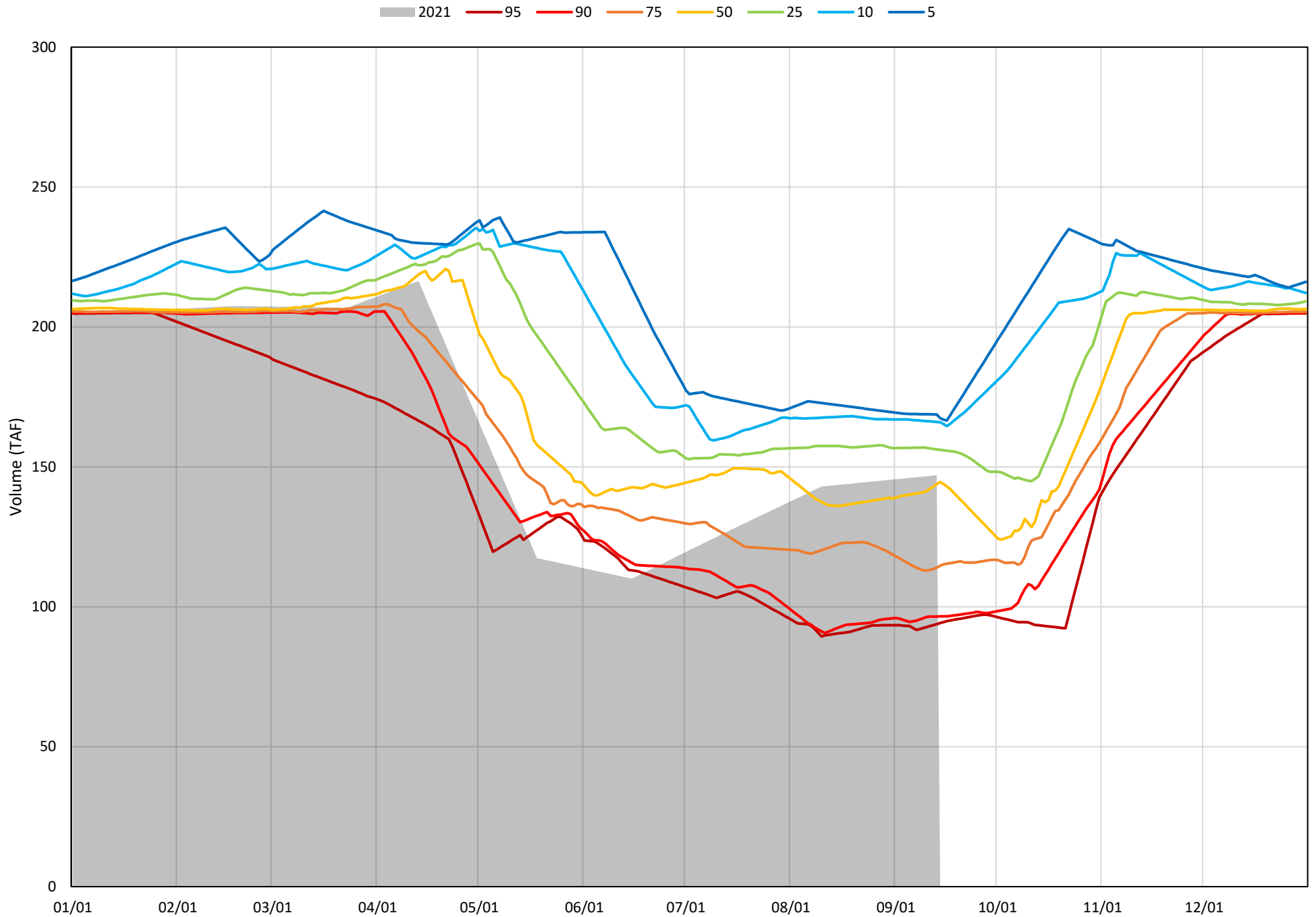


# Whiskeytown Lake Cold Water Pool Volume $\leq 56^{\circ}\text{F}$

Avg (2000-2020) 2014 2015 2016 2019 2021

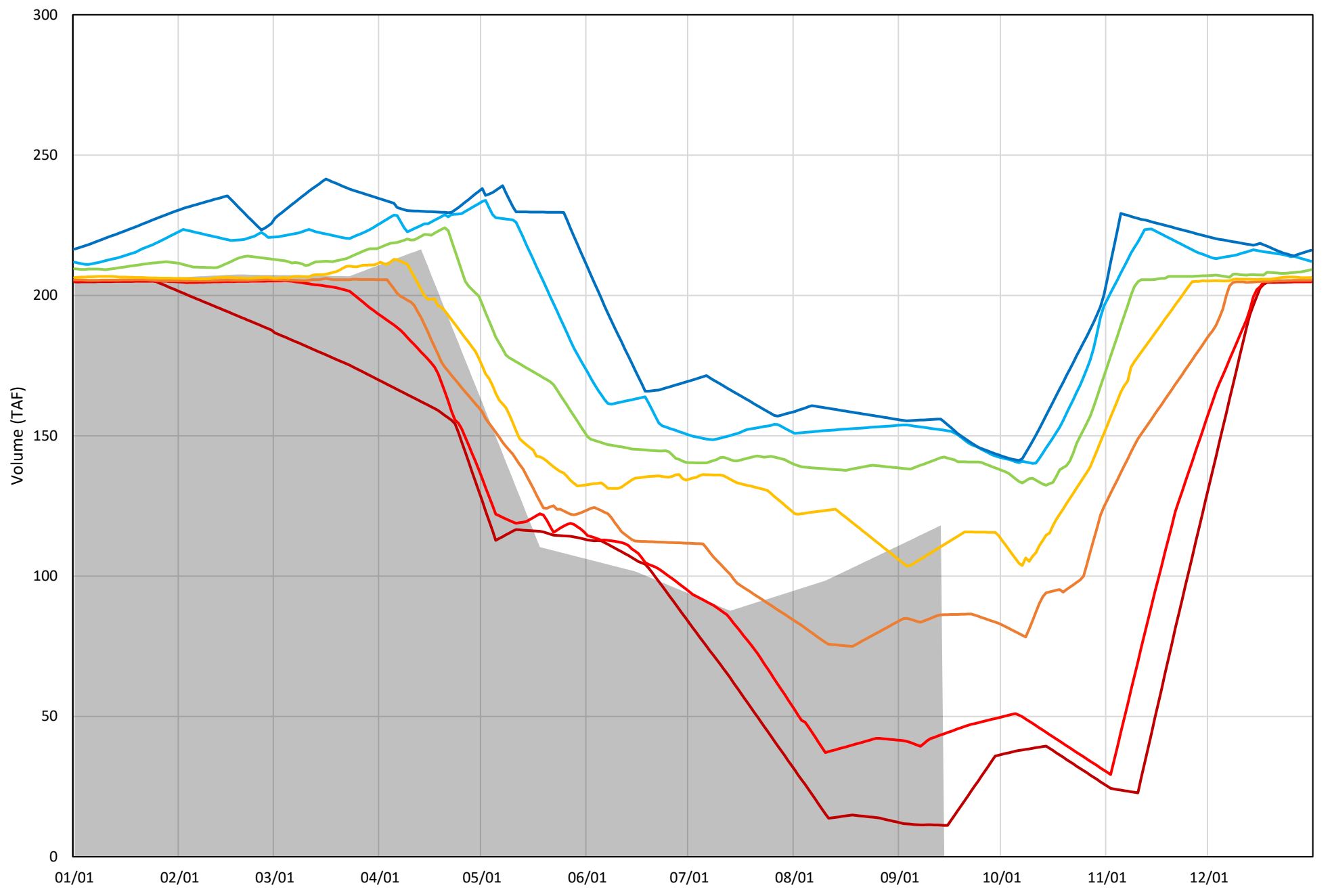


Whiskeytown Lake Cold Water Pool Volume  $\leq 60^{\circ}\text{F}$  - Percent Exceedances (2000-2020)



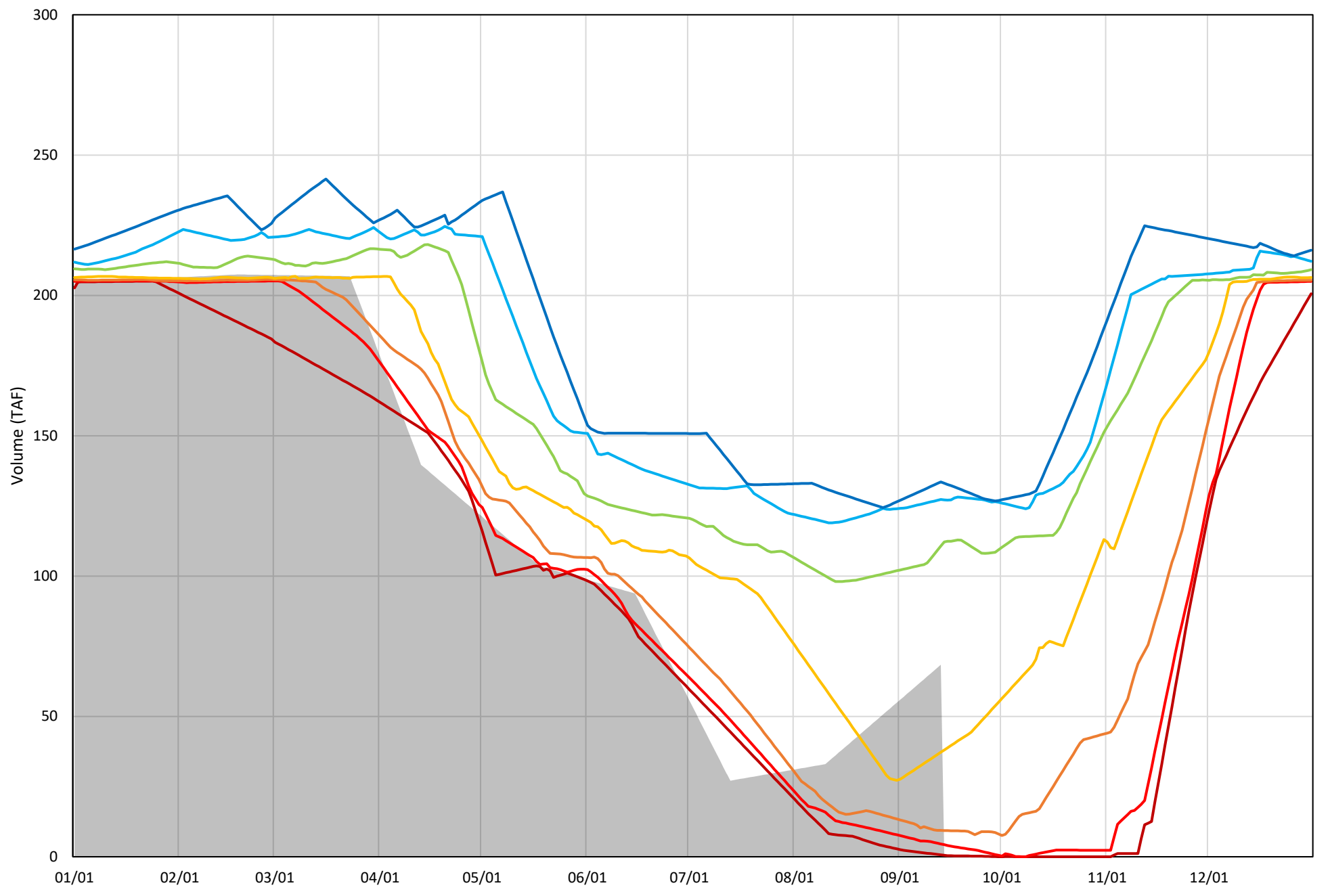
Whiskeytown Lake Cold Water Pool Volume  $\leq 58^{\circ}\text{F}$  - Percent Exceedances (2000-2020)

2021 95 90 75 50 25 10 5



Whiskeytown Lake Cold Water Pool Volume  $\leq 56^{\circ}\text{F}$  - Percent Exceedances (2000-2020)

2021 95 90 75 50 25 10 5



### Whiskeytown Cold Water Pool Comparison by Year (for Specified Date)

Sep-14 2021	Δ TAF				% Δ			
	≤60°	≤58°	≤56°	Abs. Avg.	≤60°	≤58°	≤56°	Abs. Avg.
2000	4	43	90	46	2	44	266	104
2001	15	50	94	53	10	50	276	112
2002	14	48	75	45	10	48	219	92
2003	4	43	79	42	3	43	232	92
2004	11	37	45	31	8	37	133	59
2005	-50	-53	-26	43	-34	-54	-76	55
2006	25	57	100	61	17	58	294	123
2007	3	25	44	24	2	26	130	53
2008	2	33	68	34	1	33	201	79
2009	-22	-14	-28	22	-15	-14	-83	38
2010	-34	-47	-27	36	-23	-48	-80	50
2011	-27	-11	-14	17	-19	-11	-42	24
2012	-2	12	3	6	-1	12	9	8
2013	24	54	82	53	16	55	242	104
2014	-17	-5	-30	17	-12	-5	-87	35
2015	-33	-91	-34	53	-23	-92	-99	71
2016	-50	-56	-23	43	-35	-57	-69	53
2017	17	43	56	39	12	44	164	73
2018	-24	-11	-11	15	-16	-11	-33	20
2019	-38	-9	-17	22	-27	-9	-51	29
2020	0	0	0	0	0	0	0	0

}

Historic - Current

}

(Historic - Current) / Current