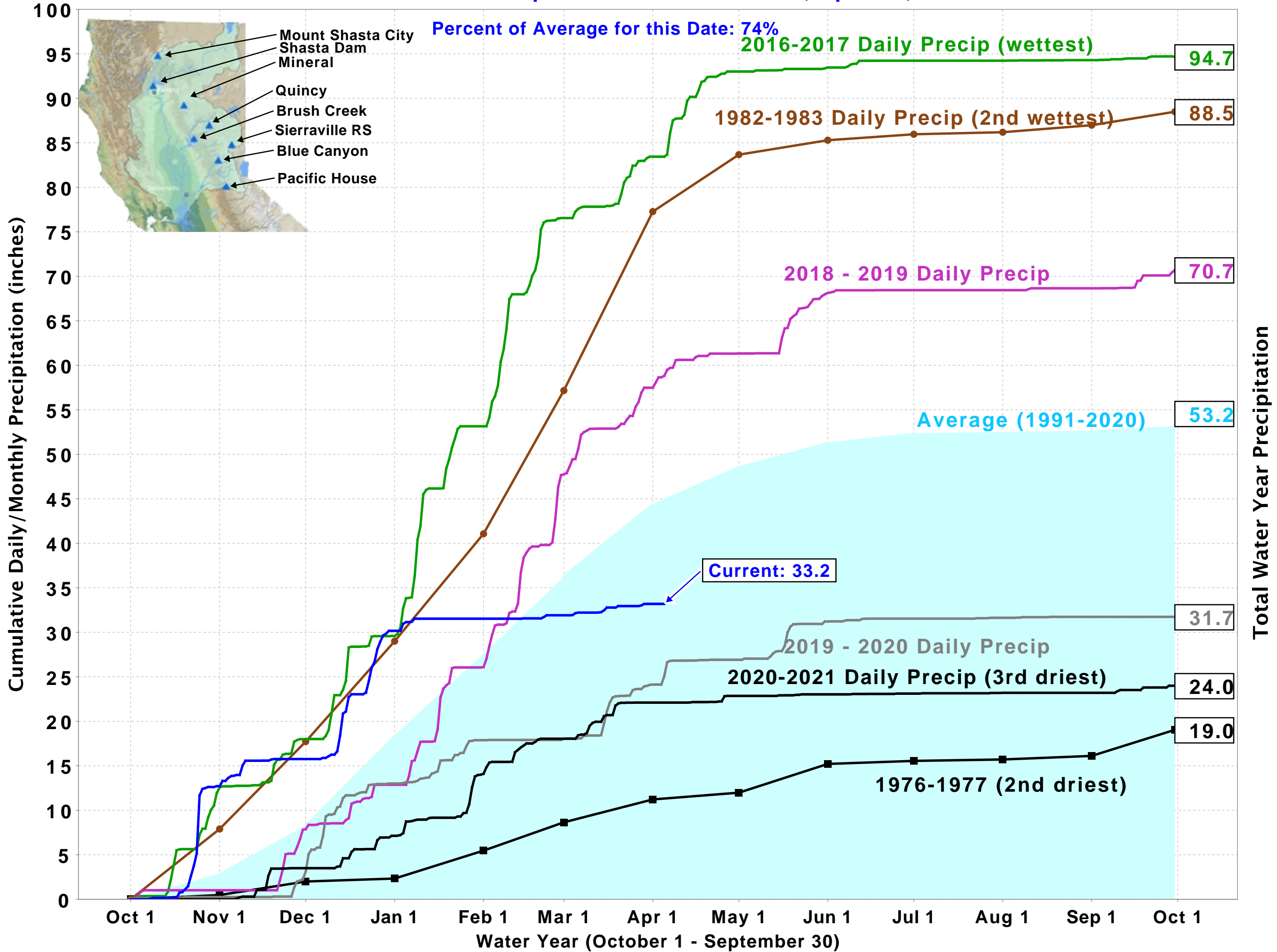
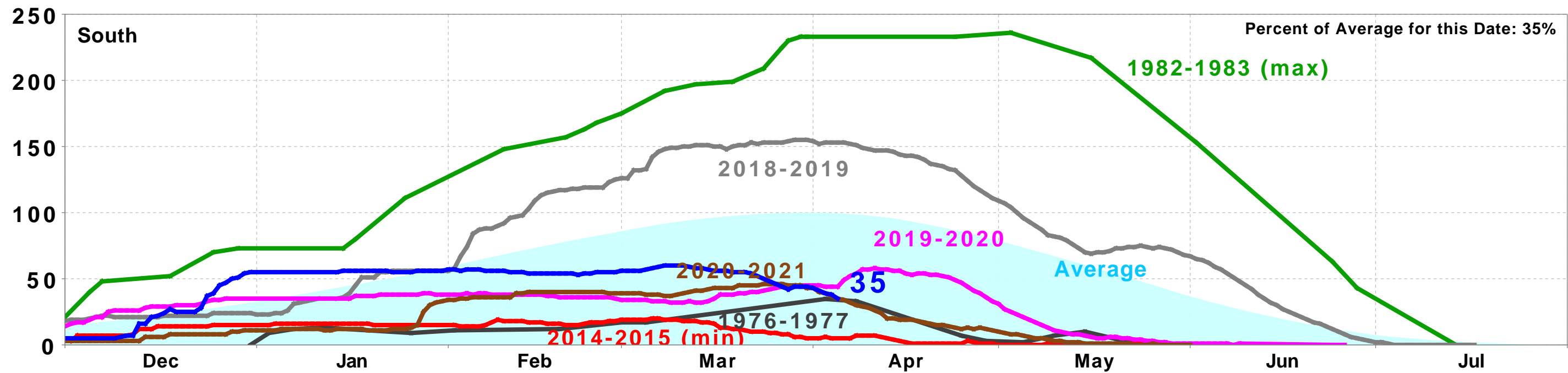
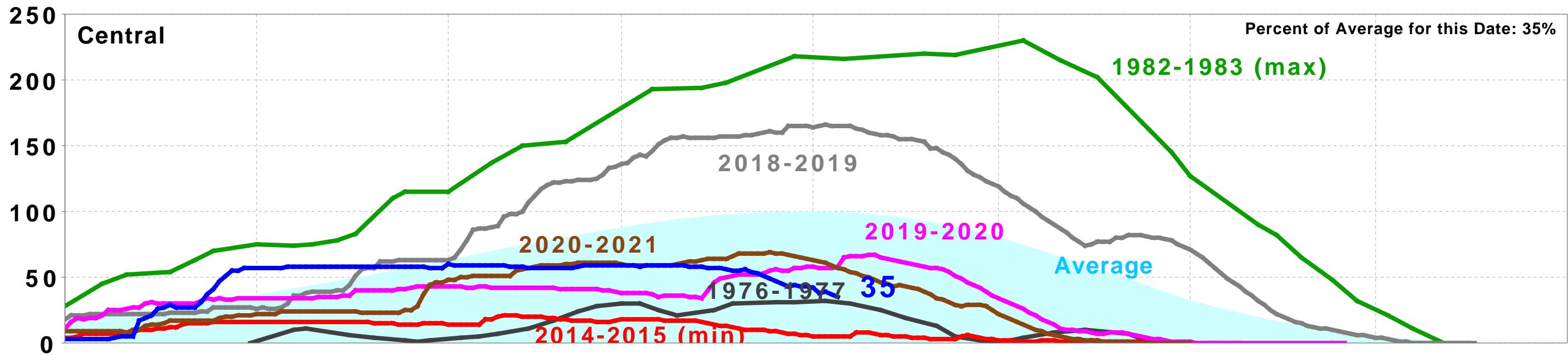
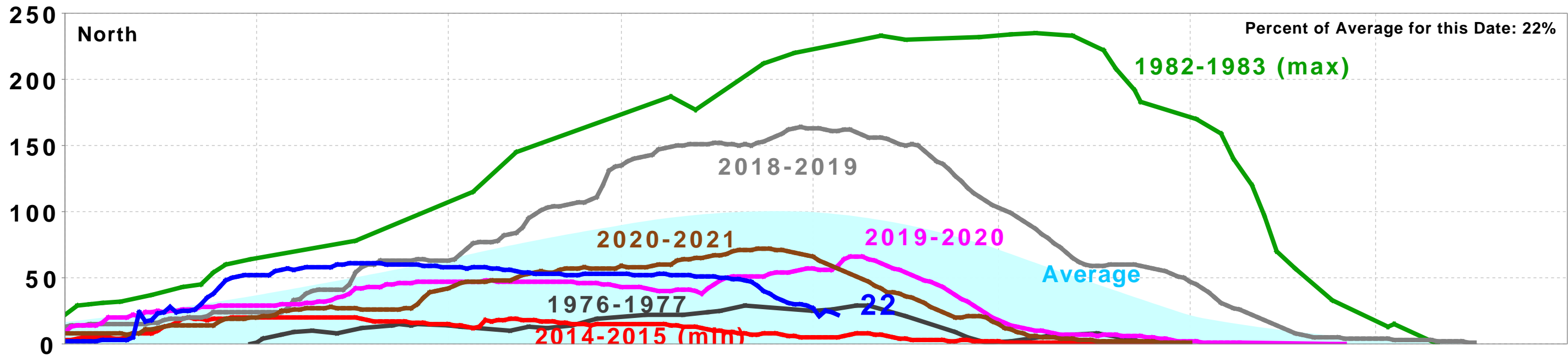


Northern Sierra Precipitation: 8-Station Index, April 05, 2022



California Snow Water Content, April 5, 2022, Percent of April 1 Average



Statewide Percent of April 1: 31%

Statewide Percent of Average for Date: 31%

DAILY CVP WATER SUPPLY REPORT

APRIL 4, 2022

RUN DATE: April 5, 2022

RESERVOIR RELEASES IN CUBIC FEET/SECOND

RESERVOIR	DAM	WY 2021	WY 2022	15 YR MEDIAN
TRINITY	LEWISTON	297	294	301
SACRAMENTO	KESWICK	4,495	3,267	4,489
FEATHER	OROVILLE (SWP)	1,500	2,300	1,900
AMERICAN	NIMBUS	1,784	1,218	1,482
STANISLAUS	GOODWIN	401	305	459
SAN JOAQUIN	FRIANT	305	969	354

STORAGE IN MAJOR RESERVOIRS IN THOUSANDS OF ACRE-FEET

RESERVOIR	CAPACITY	15 YR AVG	WY 2021	WY 2022	% OF 15 YR AVG
TRINITY	2,448	1,628	1,299	808	50
SHASTA	4,552	3,363	2,394	1,740	52
FOLSOM	977	612	363	598	98
NEW MELONES	2,420	1,461	1,532	930	64
FED. SAN LUIS	966	666	437	334	50
TOTAL NORTH CVP	11,363	7,730	6,025	4,410	57
MILLERTON	520	303	179	326	108
OROVILLE (SWP)	3,538	2,276	1,447	1,687	74

ACCUMULATED INFLOW FOR WATER YEAR TO DATE IN THOUSANDS OF ACRE-FEET

RESERVOIR	CURRENT WY 2022	WY 1977	WY 1983	15 YR AVG	% OF 15 YR AVG
TRINITY	315	80	1,276	535	59
SHASTA	1,869	1,422	7,256	2,948	63
FOLSOM	967	196	3,629	1,317	73
NEW MELONES	337	---	1,161	440	77
MILLERTON	418	110	1,653	462	90

ACCUMULATED PRECIPITATION FOR WATER YEAR TO DATE IN INCHES

RESERVOIR	CURRENT WY 2022	WY 1977	WY 1983	AVG (N YRS)	% OF AVG	LAST 24 HRS
TRINITY AT FISH HATCHERY	14.11	8.94	50.68	26.72 (60)	53	0.00
SACRAMENTO AT SHASTA DAM	35.65	10.78	102.97	52.55 (65)	68	0.00
AMERICAN AT BLUE CANYON	50.72	15.20	94.63	56.41 (47)	90	0.00
STANISLAUS AT NEW MELONES	17.46	---	41.62	23.53 (44)	74	0.00
SAN JOAQUIN AT HUNTINGTON LK	21.38	11.40	73.10	34.71 (47)	62	0.00

Updated OFFICIAL 30-Day Forecasts

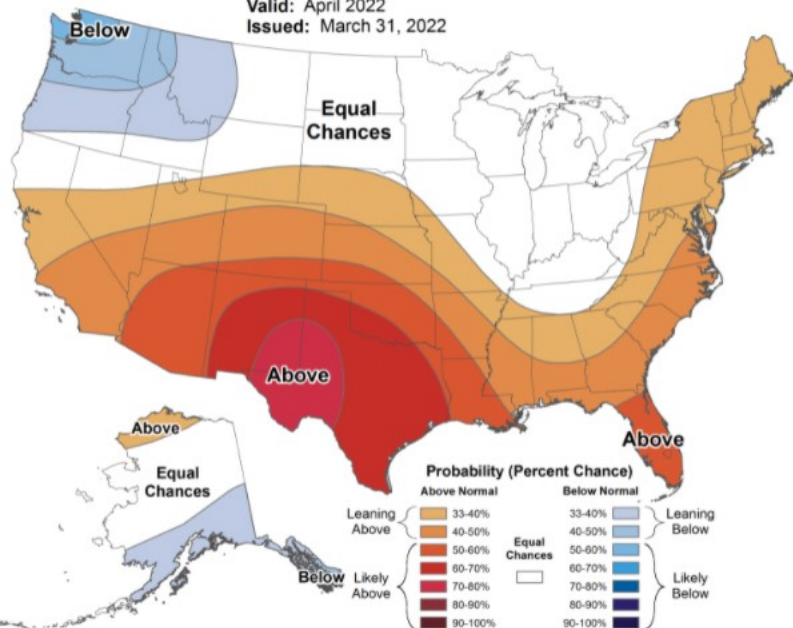
Issued: March 31, 2022



Monthly Temperature Outlook



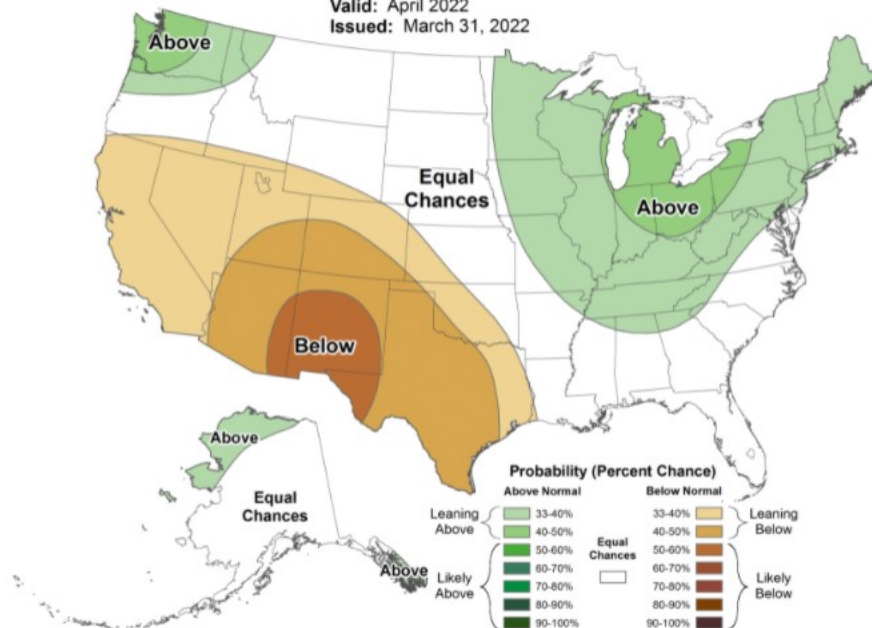
Valid: April 2022
Issued: March 31, 2022



Monthly Precipitation Outlook



Valid: April 2022
Issued: March 31, 2022



DATE	Mean Daily Water Temperatures (°F)													Mean Daily Release (CFS)			Mean Daily Air Temperatures (°F)		
	TCD ¹	SHD	SPP ¹	KWK	SAC ²	CCR	BSF	BND	RDB	IGO	LWS	DGC	NFH	Shasta Generation	Spring Creek P.P.	Keswick Total	RDD	BSF	RDB
Mar	50.0	49.2	49.3	50.2	50.6	51.2	52.6	53.8	54.5	49.2	48.7	49.2	50.2	2961	74	3246	58.7	56.2	57.8
04/01	51.9	50.5	49.7	51.6	52.2	53.1	54.9	56.2	57.1	50.6	49.6	52.3	53.6	3124	75	3259	68.0	61.5	63.5
04/02	52.2	50.2	49.7	52.1	52.5	53.4	55.3	56.9	57.6	50.7	49.5	52.5 ?	53.9	3134	75	3263	63.5	61.2	63.3
04/03	51.1	49.9	49.2	52.3	52.3	53.0	54.5	55.9	56.9	49.9	49.6	51.5	53.0	2609	202	3256	59.0	56.7	62.0
04/04	50.1	49.3	49.3	51.8	52.1	52.8	54.1	54.9	55.8	50.1	50.1	51.0	52.8	2620	331	3267	62.5	59.6	61.7
04/05																			
04/06																			
04/07																			
04/08																			
04/09																			
04/10																			
04/11																			
04/12																			
04/13																			
04/14																			
04/15																			
04/16																			
04/17																			
04/18																			
04/19																			
04/20																			
04/21																			
04/22																			
04/23																			
04/24																			
04/25																			
04/26																			
04/27																			
04/28																			
04/29																			
04/30																			
-																			
Apr	51.3	50.0	49.5	51.9	52.3	53.1	54.7	56.0	56.9	50.3	49.7	51.8	53.3	2872	171	3261	63.3	59.7	62.6

Total CFS	11487	683	13045
Total AF	22784	1355	25874

Legend

- ? = 1-9 hours of data missing (Average includes estimations)
- ! = 10 or more hours of data missing (Average not calculated)
- # = Station out of service
- ↑ = Record high air temperature
- ↓ = Record low air temperature
- = Monthly Averages

Notes

- ¹ Temperatures are weighted averages based on individual penstock flow and temperature
- Highlighted cells in the TCD column indicate a TCD change was made on that day
- ² Current Sacramento River control point (see page 4 for more details)

D A T E	Redding (RDD) Daily Air Temperatures (°F)																																					
	Actual			Forecasted																																		
	Previous Day			Current Day			1 Day			2 Days			3 Days			4 Days			5 Days			6 Days			7 Days			8 Days			9 Days			10 Days				
	↓	↑	Avg	↓	↑	Avg	↓	↑	Avg	↓	↑	Avg	↓	↑	Avg	↓	↑	Avg	↓	↑	Avg	↓	↑	Avg	↓	↑	Avg	↓	↑	Avg	↓	↑	Avg	↓	↑	Avg		
04/01	51	76	63.5	57	81	63.5	45	80	62.5	44	78	61.0	46	70	58.0	43	76	59.5	47	86	66.5	49	92	70.5	53	86	69.5	53	86	69.5	52	75	63.5	43	67	55.0		
04/02	55	81	68.0	49	80	63.5	43	77	60.0	46	69	57.5	42	74	58.0	46	87	66.5	49	91	70.0	52	91	71.5	54	80	67.0	44	68	56.0	46	71	58.5	44	73	58.5		
04/03	47	80	63.5	41	79	63.5	47	69	58.0	42	77	59.5	46	90	68.0	51	93	72.0	54	89	71.5	50	79	64.5	56	82	69.0	49	70	59.5	49	71	60.0	46	73	59.5		
04/04	40	78	59.0	55	68	63.5	40	74	57.0	46	89	67.5	51	93	72.0	54	90	72.0	52	83	67.5	44	70	57.0	46	66	56.0	43	72	57.5	45	75	60.0	49	76	62.5		
04/05	52	73	62.5	42	73	63.5	47	89	68.0	51	94	72.5	54	90	72.0	50	78	64.0	42	71	56.5	39	65	52.0	40	66	53.0	42	65	53.5	43	72	57.5	51	77	64.0		
04/06																																						
04/07																																						
04/08																																						
04/09																																						
04/10																																						
04/11																																						
04/12																																						
04/13																																						
04/14																																						
04/15																																						
04/16																																						
04/17																																						
04/18																																						
04/19																																						
04/20																																						
04/21																																						
04/22																																						
04/23																																						
04/24																																						
04/25																																						
04/26																																						
04/27																																						
04/28																																						
04/29																																						
04/30																																						
-																																						

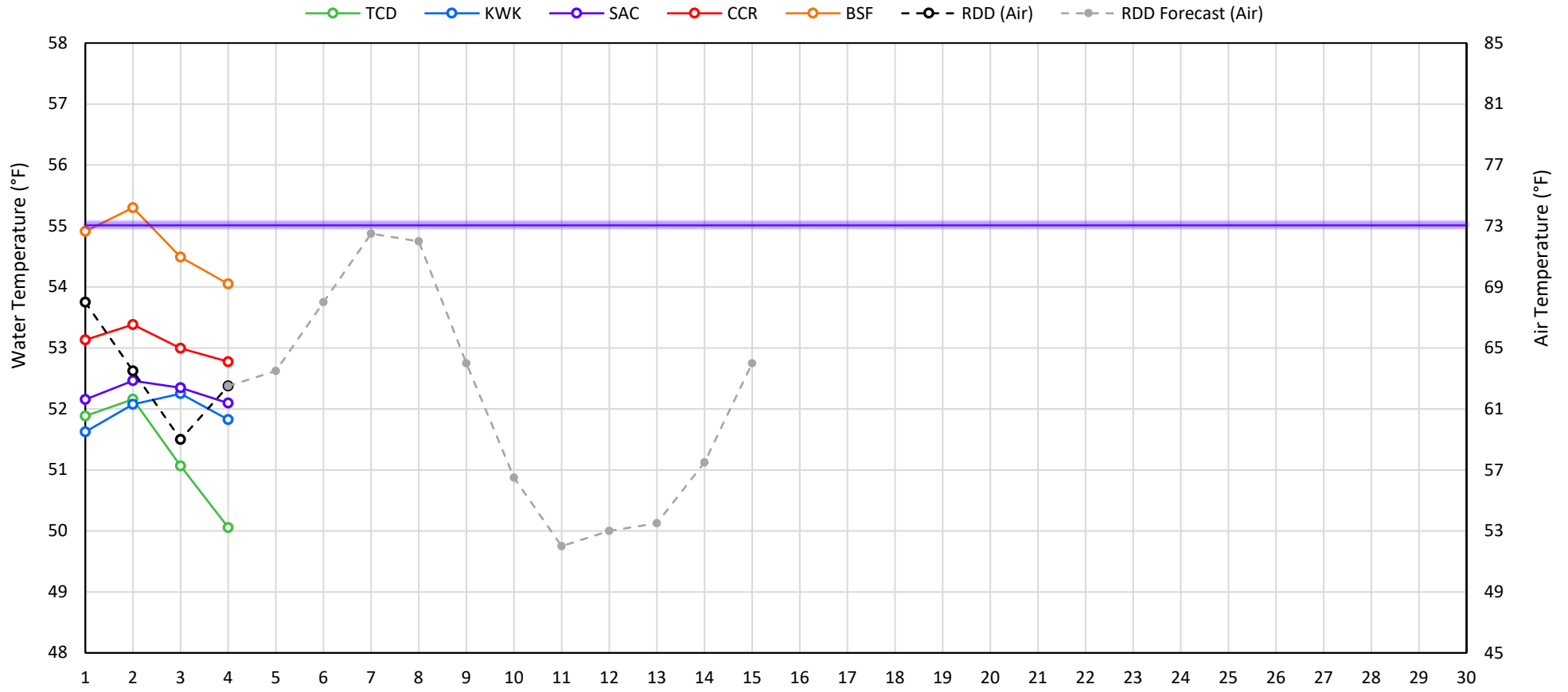
Web Links

- [10-Day Min/Max Forecast](#)
- [Previous Days Min/Max Actuals](#)

Legend

- NR = Forecasted temperatures not recorded
- 100** = Previous day actual temperatures in red and bolded indicate a record temperature for that date

Mean Daily Temperatures



Station Details

Code	Body of Water	Location ¹	CDEC Link
TCD	N/A	Shasta Power Plant	N/A
SHD	Sacramento River	0.3 miles downstream of Shasta Power Plant	Click Here
SPP	N/A	Spring Creek Power Plant	N/A
KWK	Sacramento River	0.8 miles downstream of Keswick Dam	Click Here
SAC	Sacramento River	4.8 miles downstream of Keswick Dam	Click Here
CCR	Sacramento River	9.7 miles downstream of Keswick Dam	Click Here
BSF	Sacramento River	25 miles downstream of Keswick Dam	Click Here
JLF	Sacramento River	34 miles downstream of Keswick Dam	Click Here
BND	Sacramento River	41 miles downstream of Keswick Dam	Click Here
RDB	Sacramento River	58 miles downstream of Keswick Dam	Click Here
IGO	Clear Creek	7.3 miles downstream of Whiskeytown Dam	Click Here
LWS	Trinity River	1.1 miles downstream of Lewiston Dam	Click Here
DGC	Trinity River	19 miles downstream of Lewiston Dam	Click Here
NFH	Trinity River	38 miles downstream of Lewiston Dam	Click Here

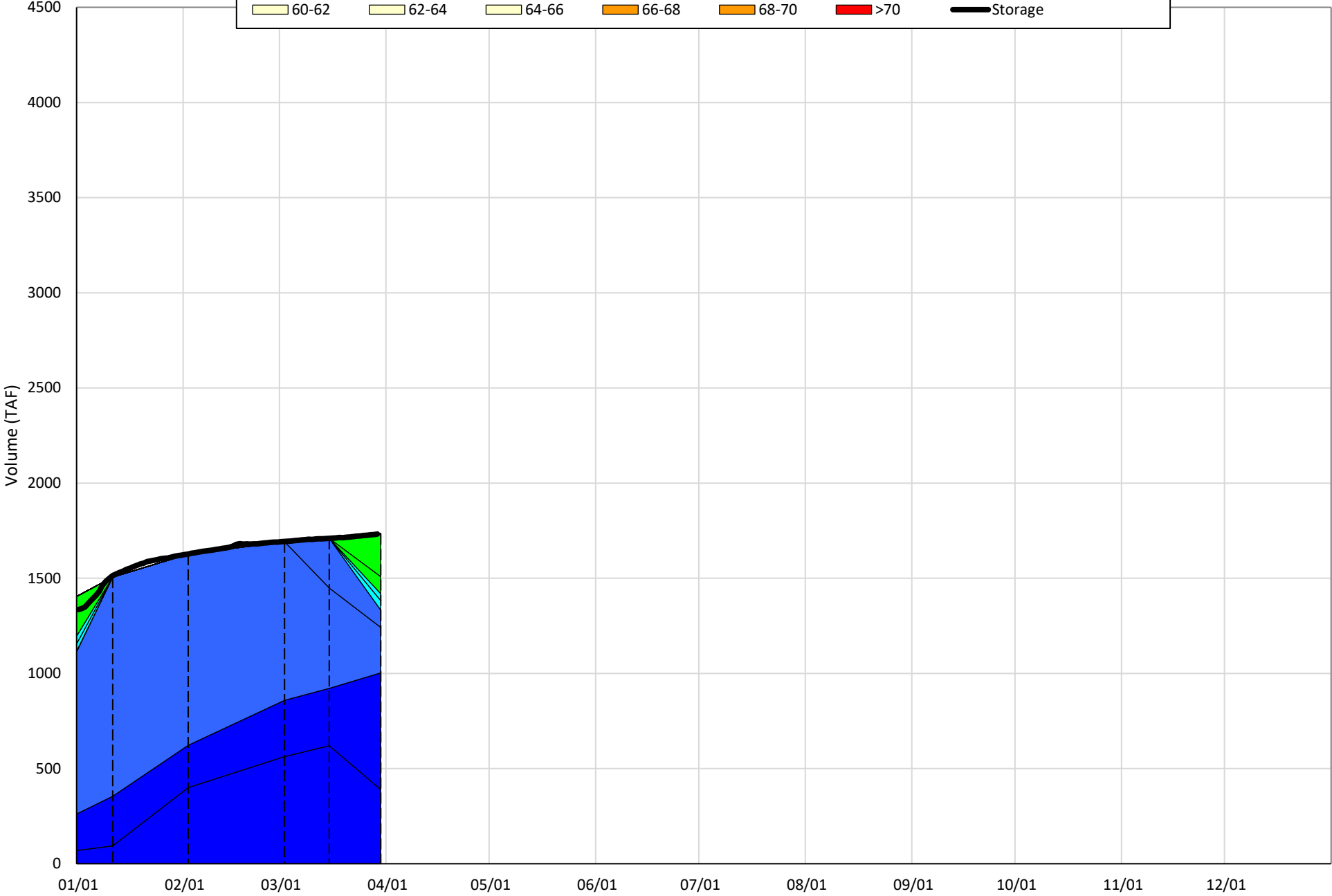
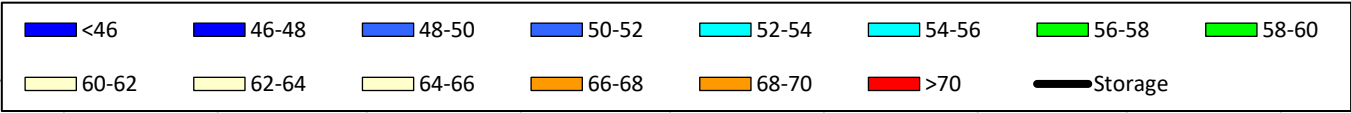
Water Right Temperature Control Points

River	Point	Temp. (°F)	Begin Date	End Date
Sacramento	CCR	56	09/21/2020	04/18/2021
Sacramento	CCR	60	04/18/2021	05/17/2021
Sacramento	SAC	57	05/17/2021	06/15/2021
Sacramento	SAC	55	06/15/2021	TBD
Trinity	DGC	56	09/15/2021	10/01/2021
Trinity	NFH	56	10/01/2021	12/31/2021

Notes

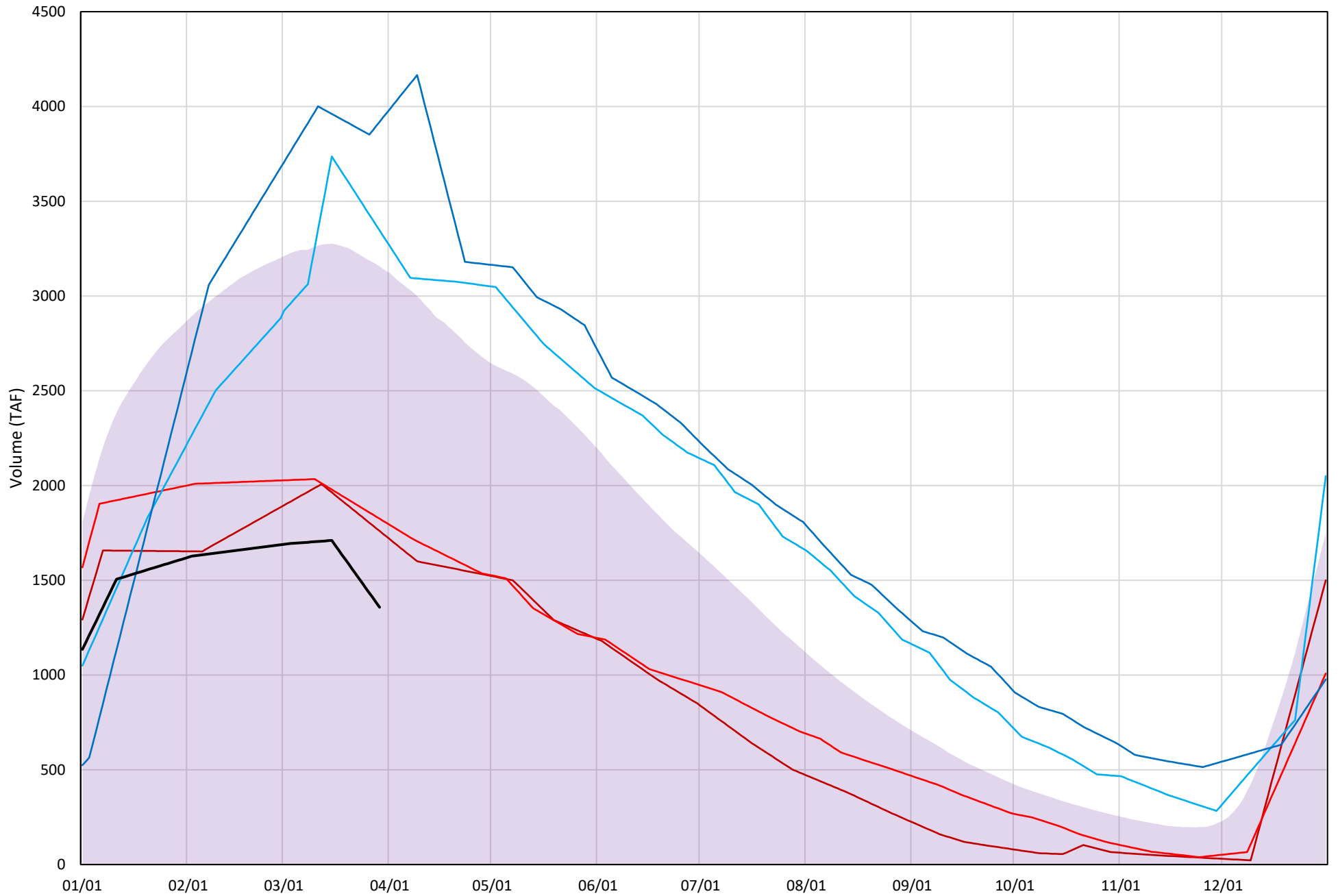
¹ Distances are approximate

Shasta Lake Isothermobaths Plot - 2022



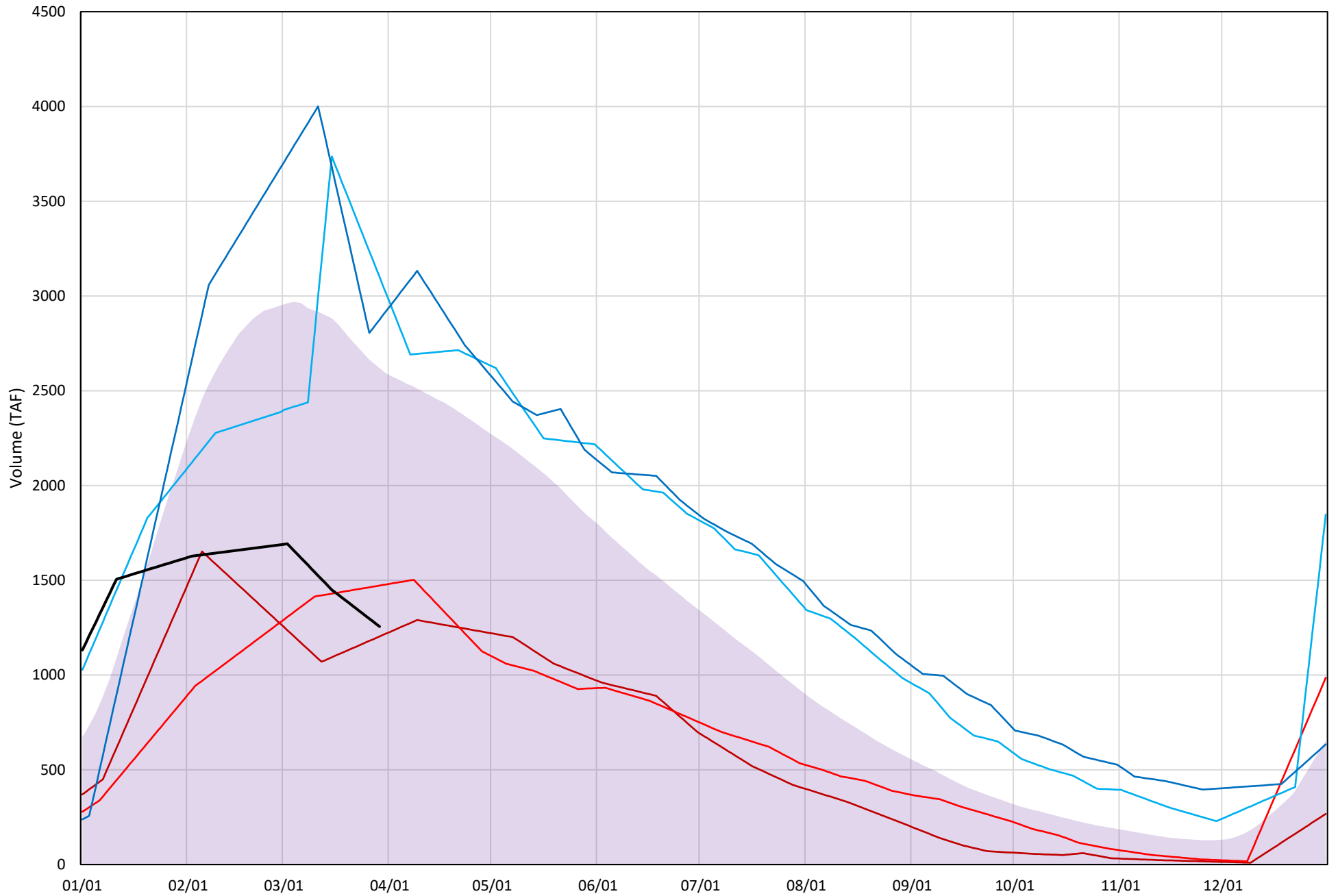
Shasta Lake Cold Water Pool Volume $\leq 52^{\circ}\text{F}$

Avg (1998-2021) 2014 2015 2016 2019 2022



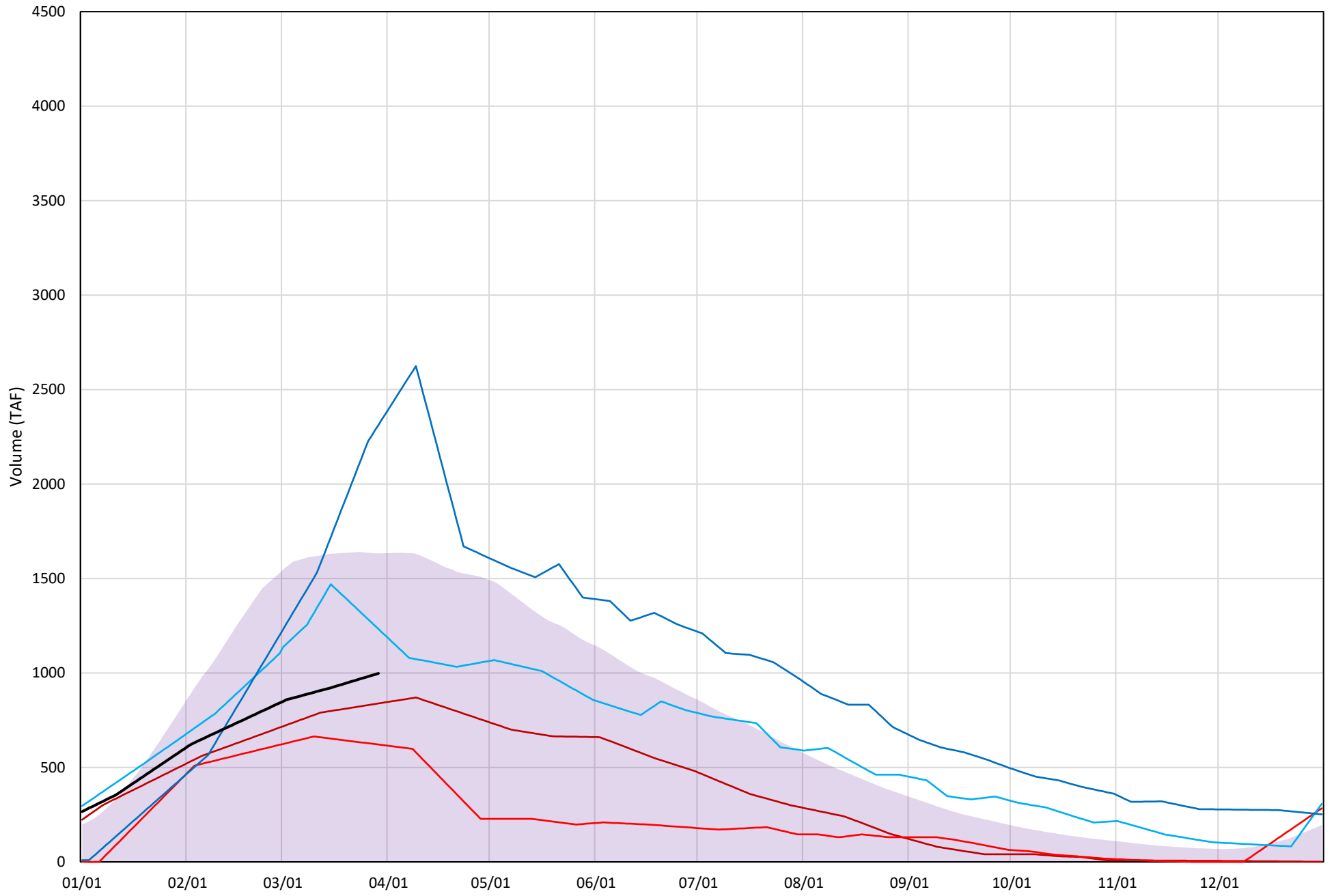
Shasta Lake Cold Water Pool Volume $\leq 50^{\circ}\text{F}$

Avg (1998-2021) 2014 2015 2016 2019 2022



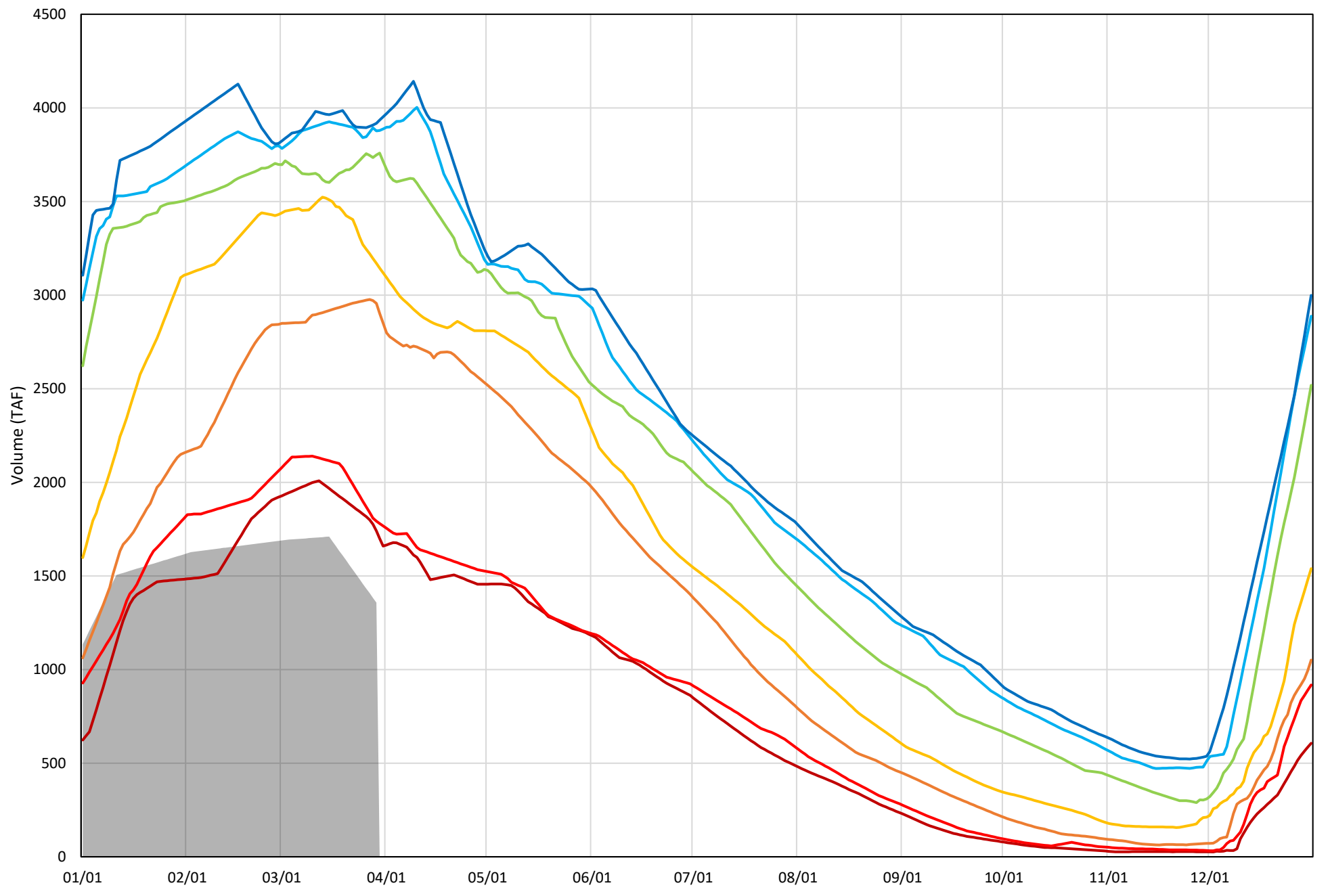
Shasta Lake Cold Water Pool Volume $\leq 48^{\circ}\text{F}$

Avg (1998-2021) 2014 2015 2016 2019 2022



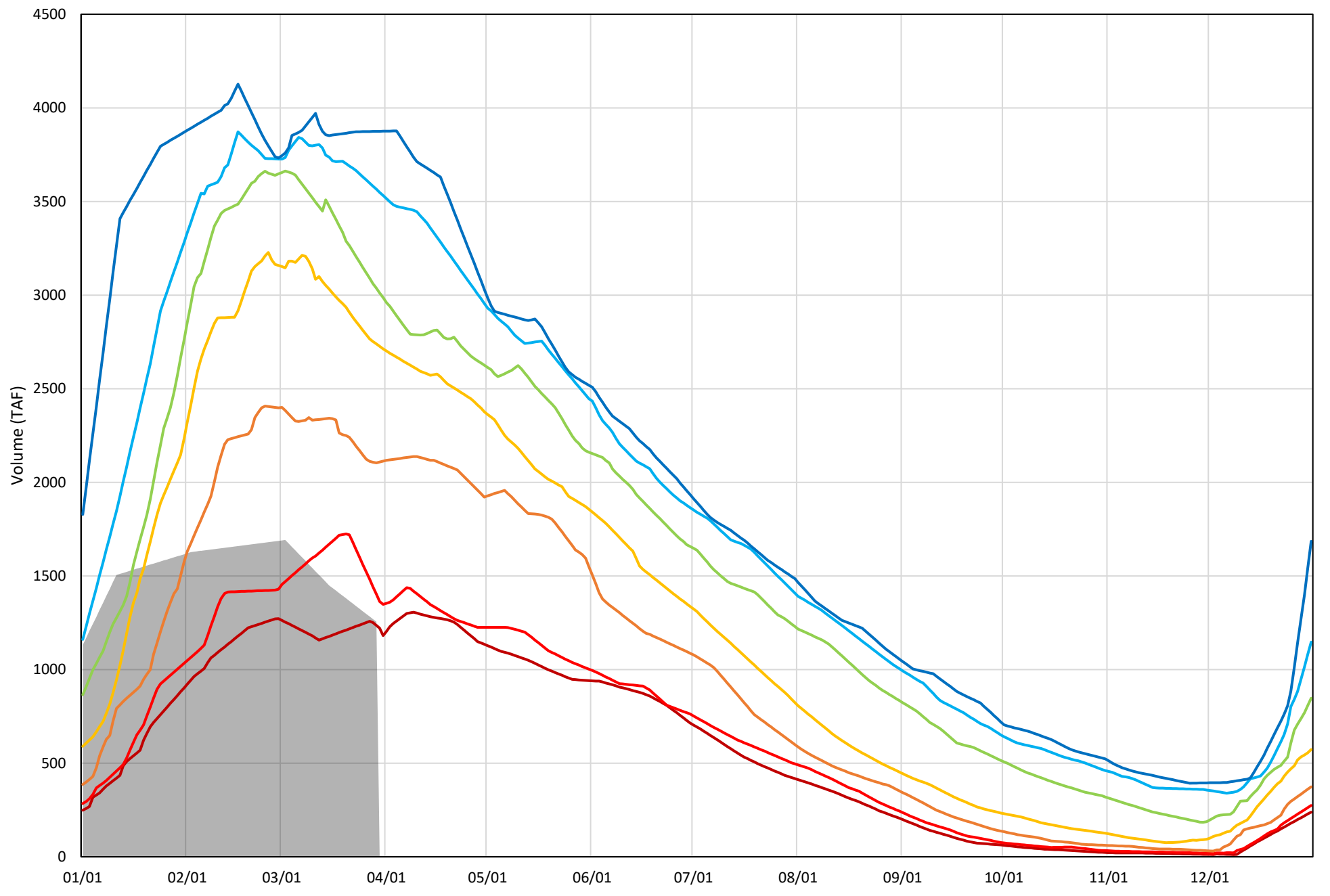
Shasta Lake Cold Water Pool Volume $\leq 52^{\circ}\text{F}$ - Percent Exceedances (1998-2021)

2022 95 90 75 50 25 10 5



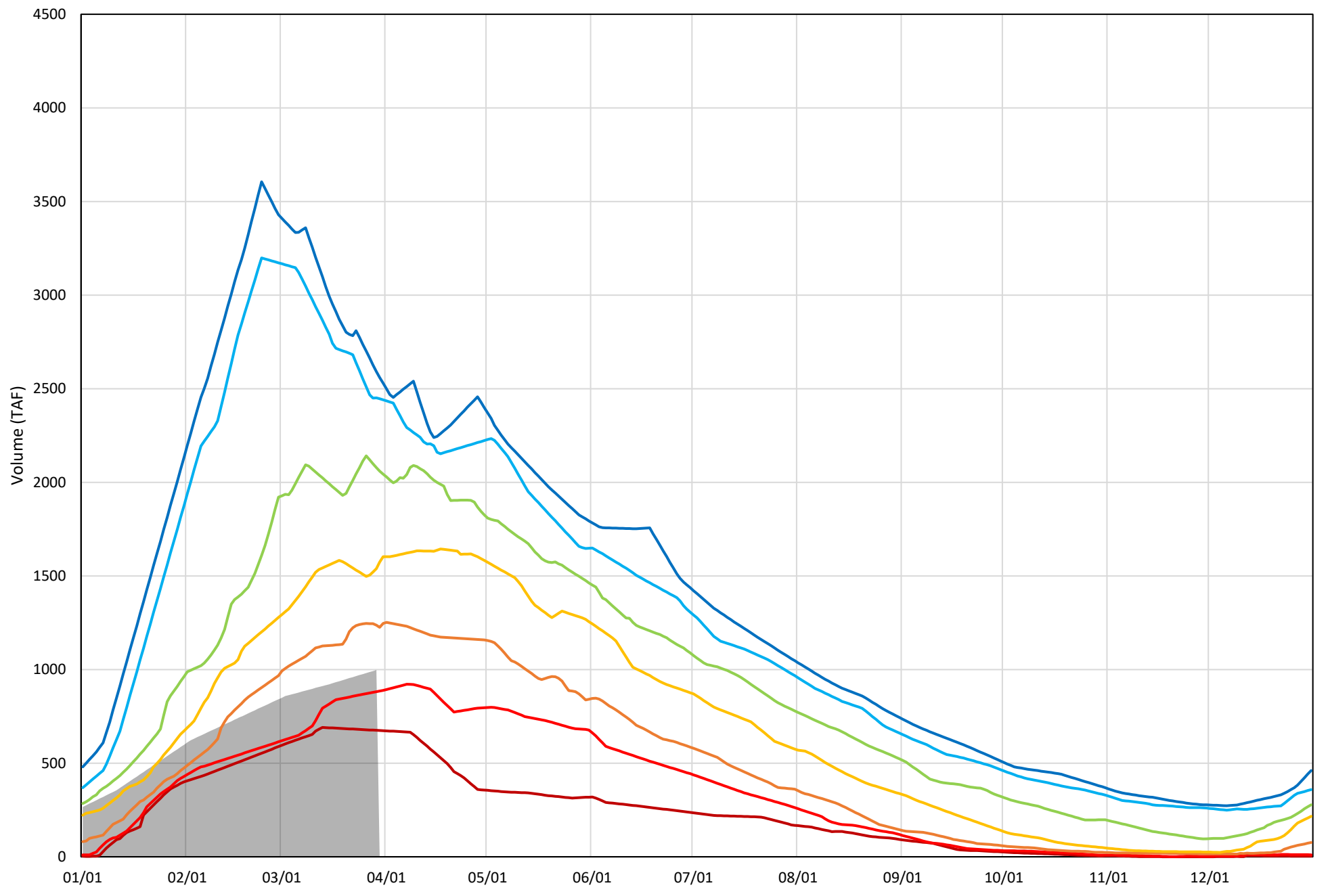
Shasta Lake Cold Water Pool Volume $\leq 50^{\circ}\text{F}$ - Percent Exceedances (1998-2021)

2022 95 90 75 50 25 10 5



Shasta Lake Cold Water Pool Volume $\leq 48^{\circ}\text{F}$ - Percent Exceedances (1998-2021)

2022 95 90 75 50 25 10 5



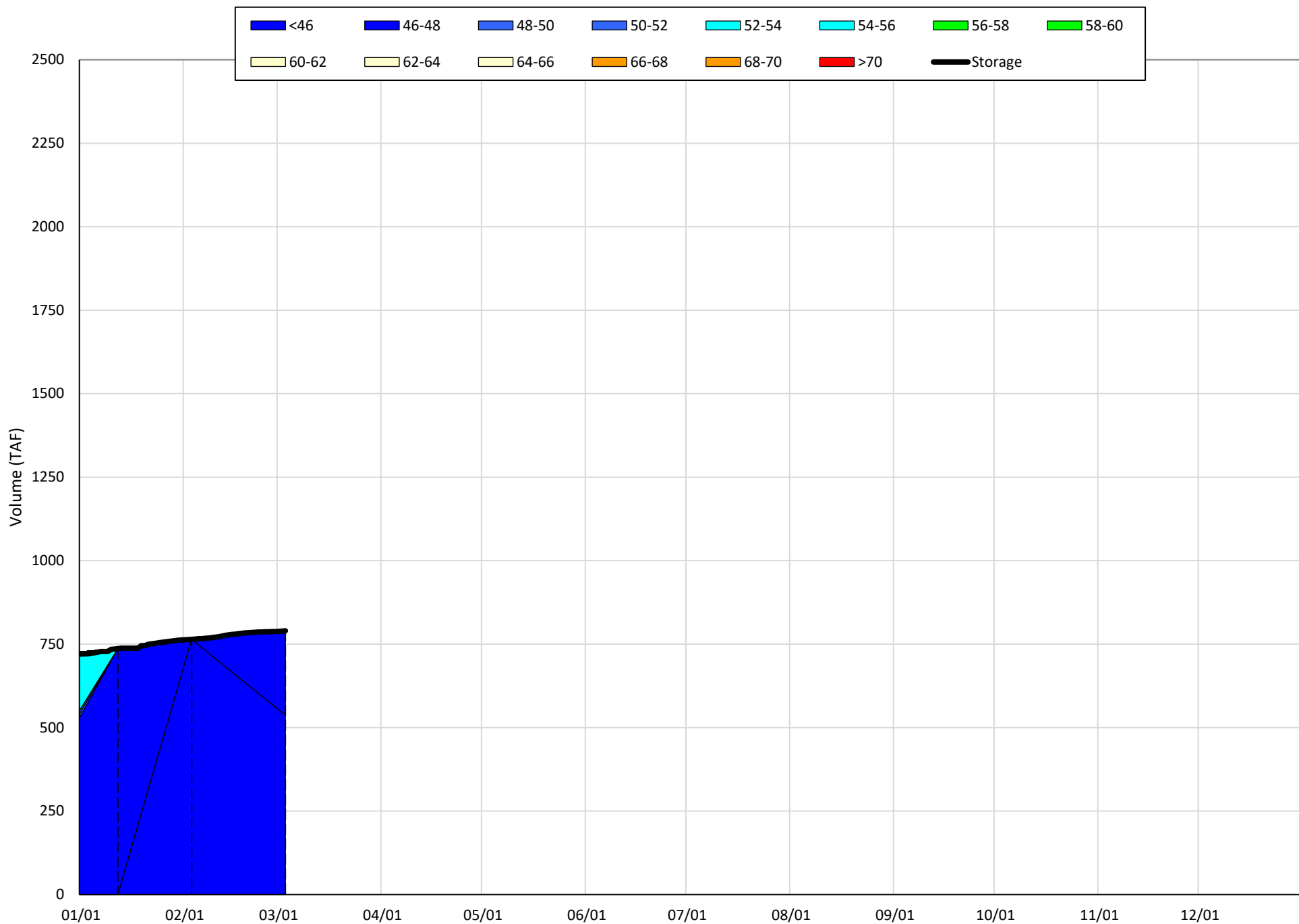
Shasta Lake Cold Water Pool Comparison by Year (for Specified Date)

Mar-30 2022	Δ TAF				% Δ			
	$\leq 52^\circ$	$\leq 50^\circ$	$\leq 48^\circ$	Abs. Avg.	$\leq 52^\circ$	$\leq 50^\circ$	$\leq 48^\circ$	Abs. Avg.
1998	2140	1729	602	1490	158	138	60	119
1999	2244	1984	1592	1940	165	158	160	161
2000	1744	1380	251	1125	129	110	25	88
2001	1692	1501	1240	1478	125	120	124	123
2002	2339	2117	879	1779	172	169	88	143
2003	1714	1165	457	1112	126	93	46	88
2004	1826	1798	338	1321	135	143	34	104
2005	1372	1029	269	890	101	82	27	70
2006	2465	2502	1594	2187	182	199	160	180
2007	1798	1709	893	1467	132	136	89	119
2008	1605	720	475	933	118	57	48	74
2009	908	786	734	809	67	63	74	68
2010	2470	1551	906	1642	182	124	91	132
2011	2556	2658	1138	2118	188	212	114	171
2012	2408	1601	480	1496	177	128	48	118
2013	1772	1467	900	1380	131	117	90	113
2014	402	-52	-159	204	30	-4	-16	17
2015	467	217	-377	353	34	17	-38	30
2016	1989	1844	235	1356	146	147	24	106
2017	2482	1454	1236	1724	183	116	124	141
2018	1596	1081	190	956	118	86	19	74
2019	2561	1620	1315	1832	189	129	132	150
2020	2234	788	131	1051	165	63	13	80
2021	376	78	-73	176	28	6	-7	14
2022	0	0	0	0	0	0	0	0

Historic - Current

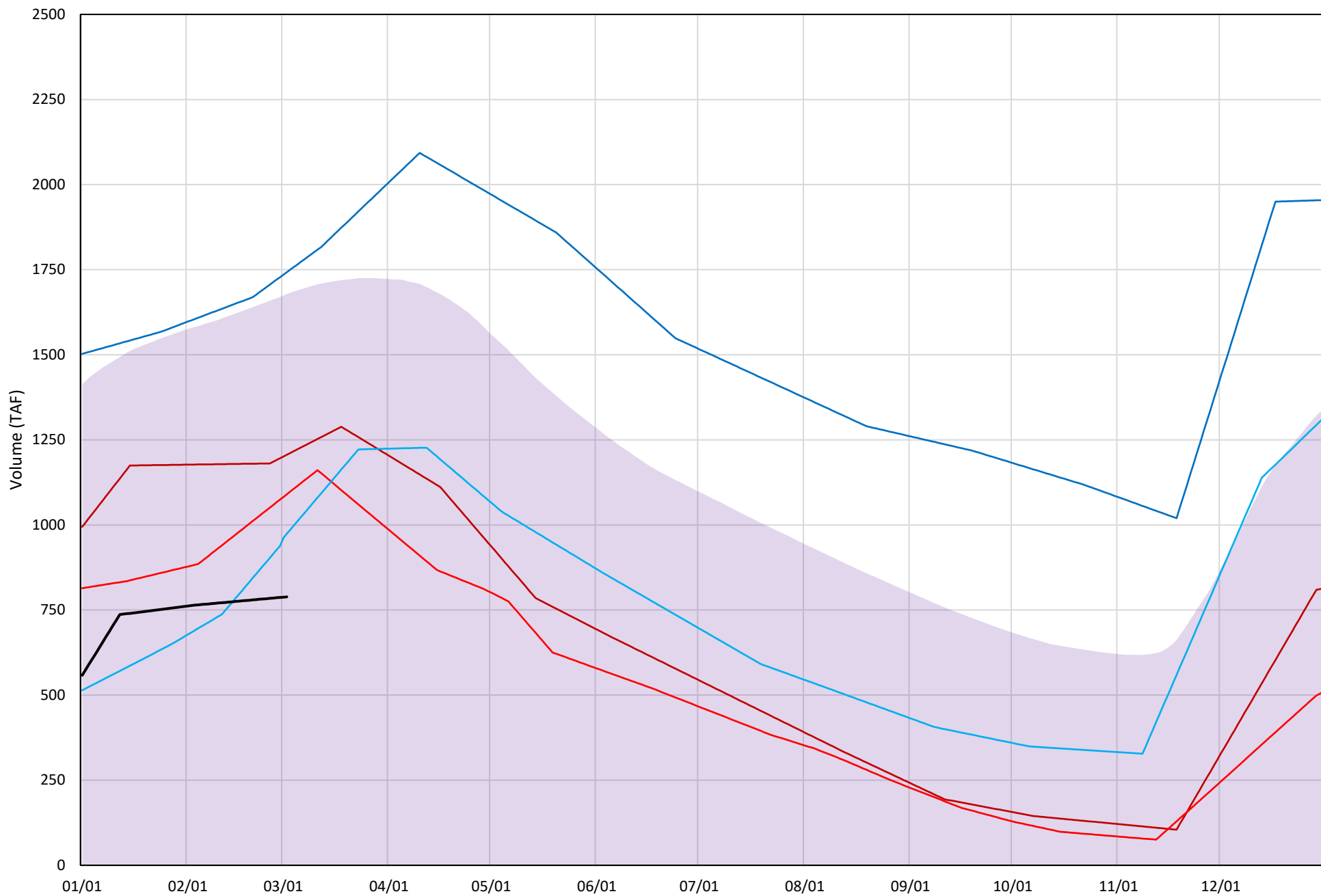
(Historic - Current) / Current

Trinity Lake Isothermobaths Plot - 2022



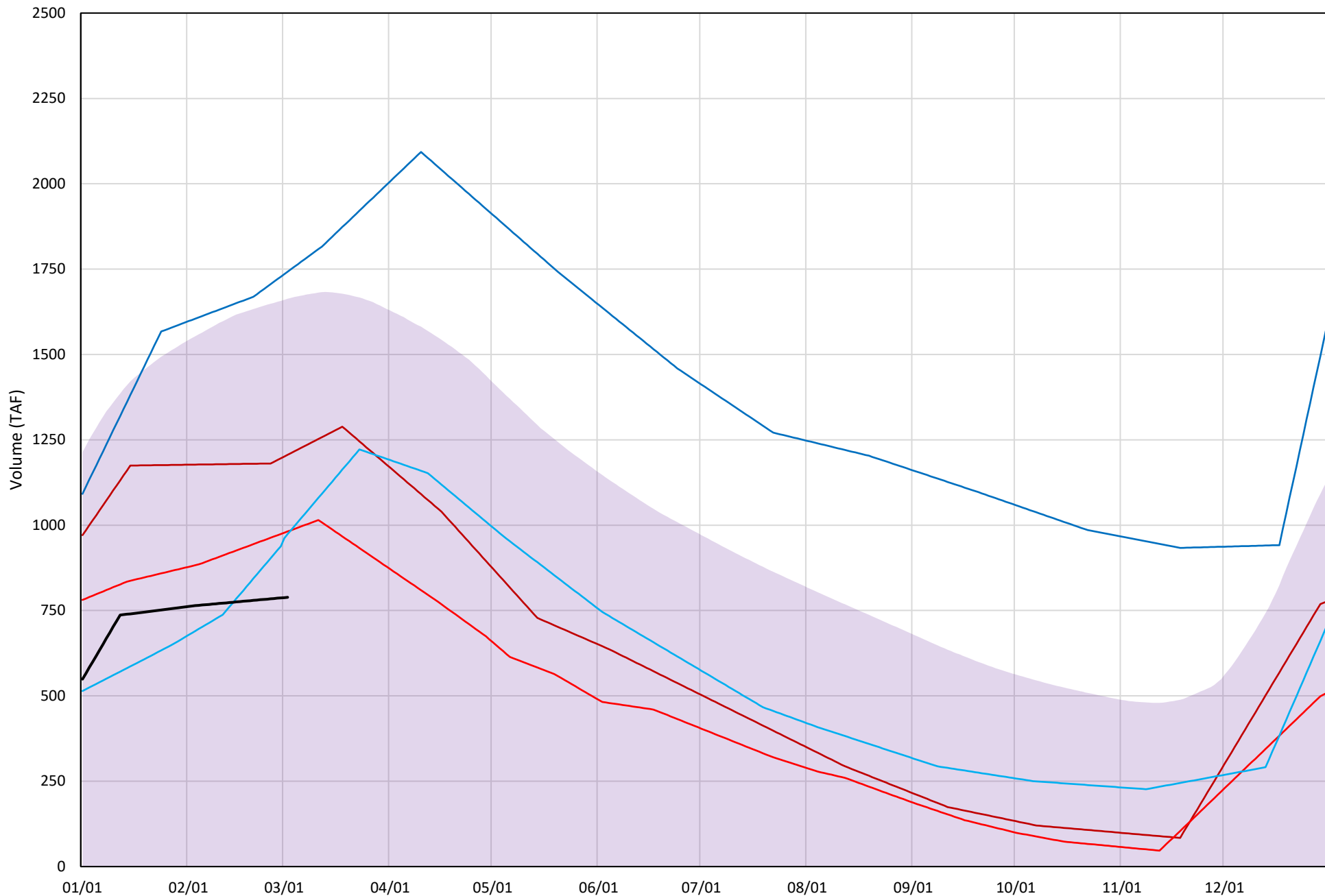
Trinity Lake Cold Water Pool Volume ≤52°F

Avg (2000-2021) 2014 2015 2016 2019 2022



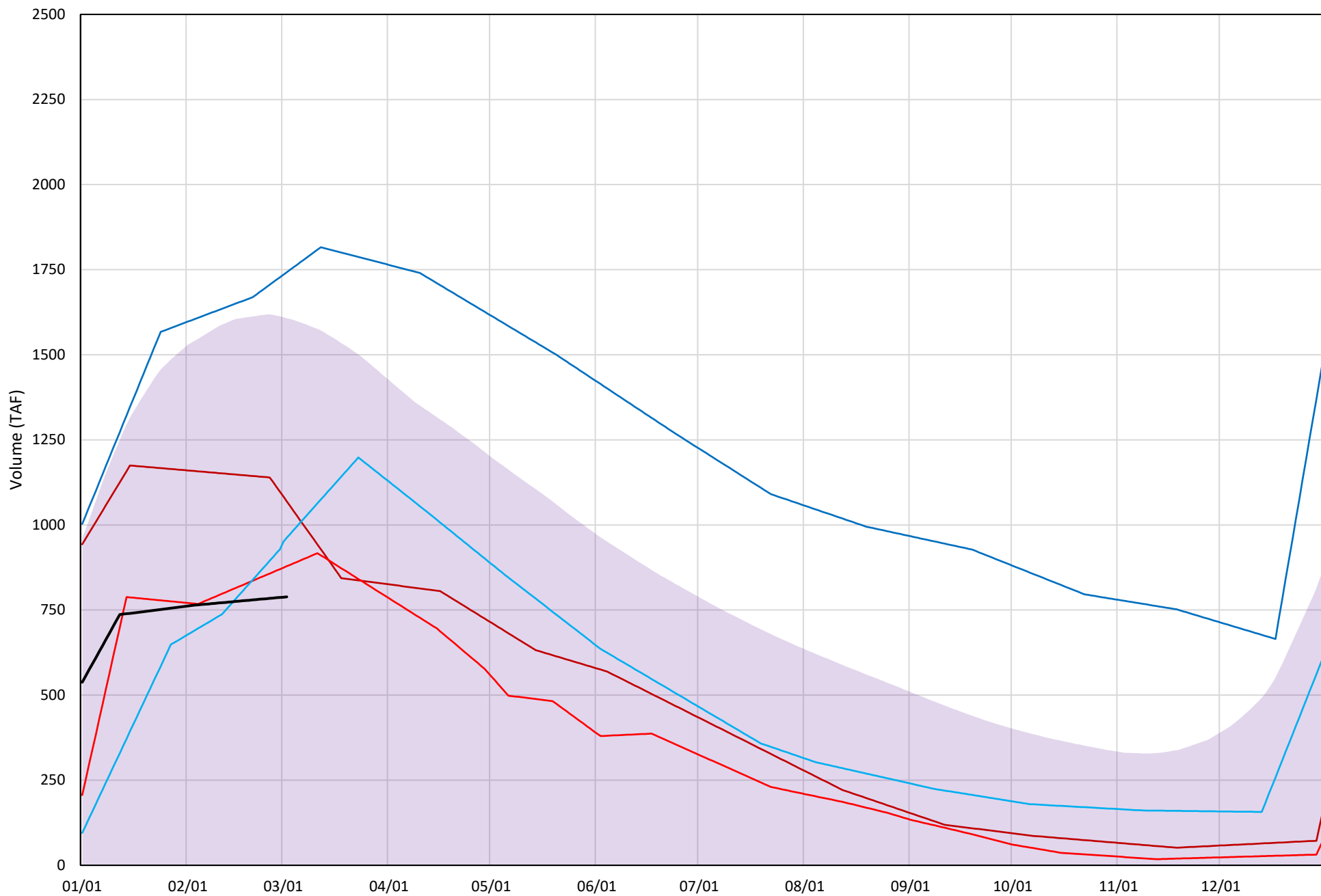
Trinity Lake Cold Water Pool Volume ≤50°F

Avg (2000-2021) 2014 2015 2016 2019 2022

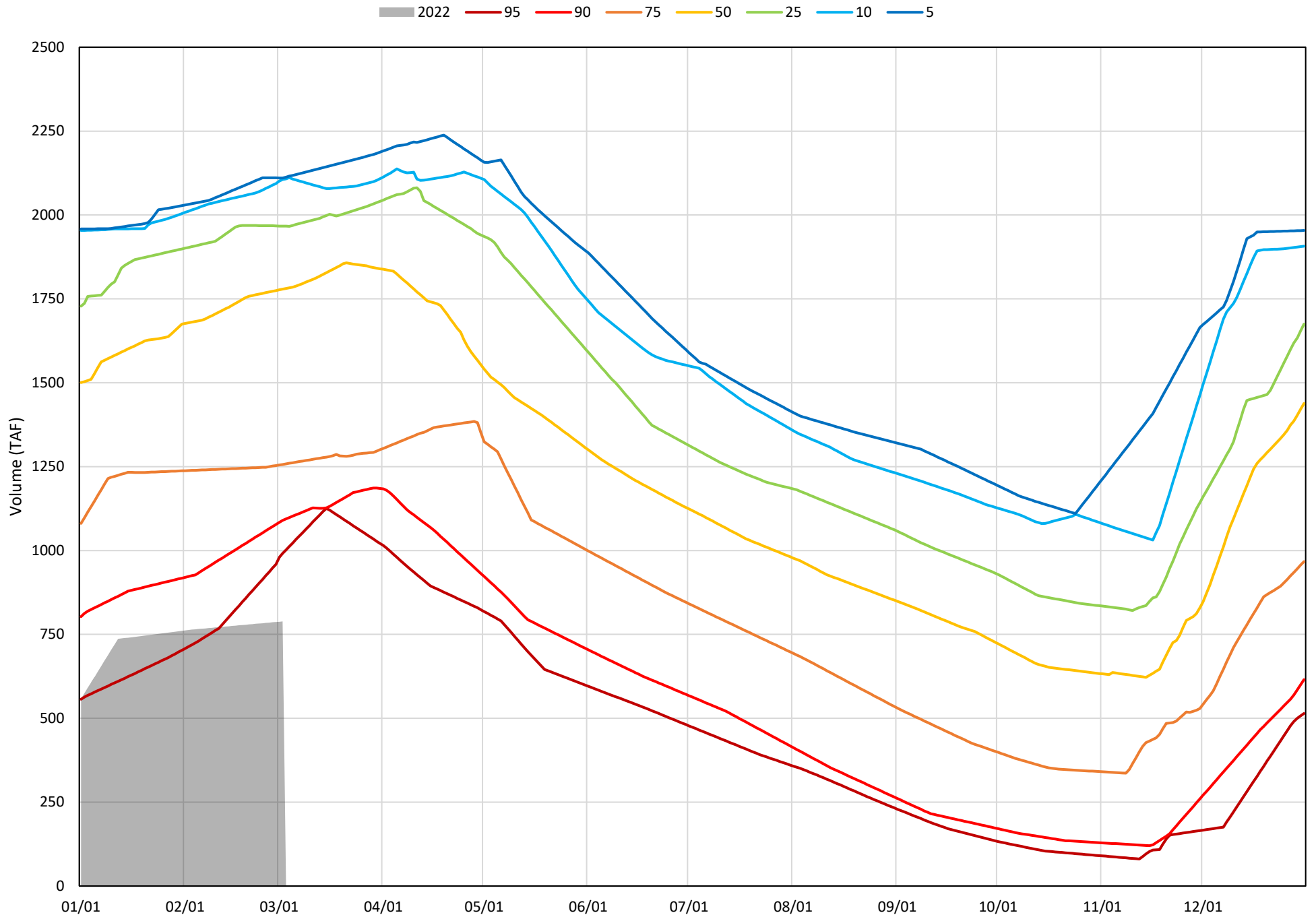


Trinity Lake Cold Water Pool Volume $\leq 48^{\circ}\text{F}$

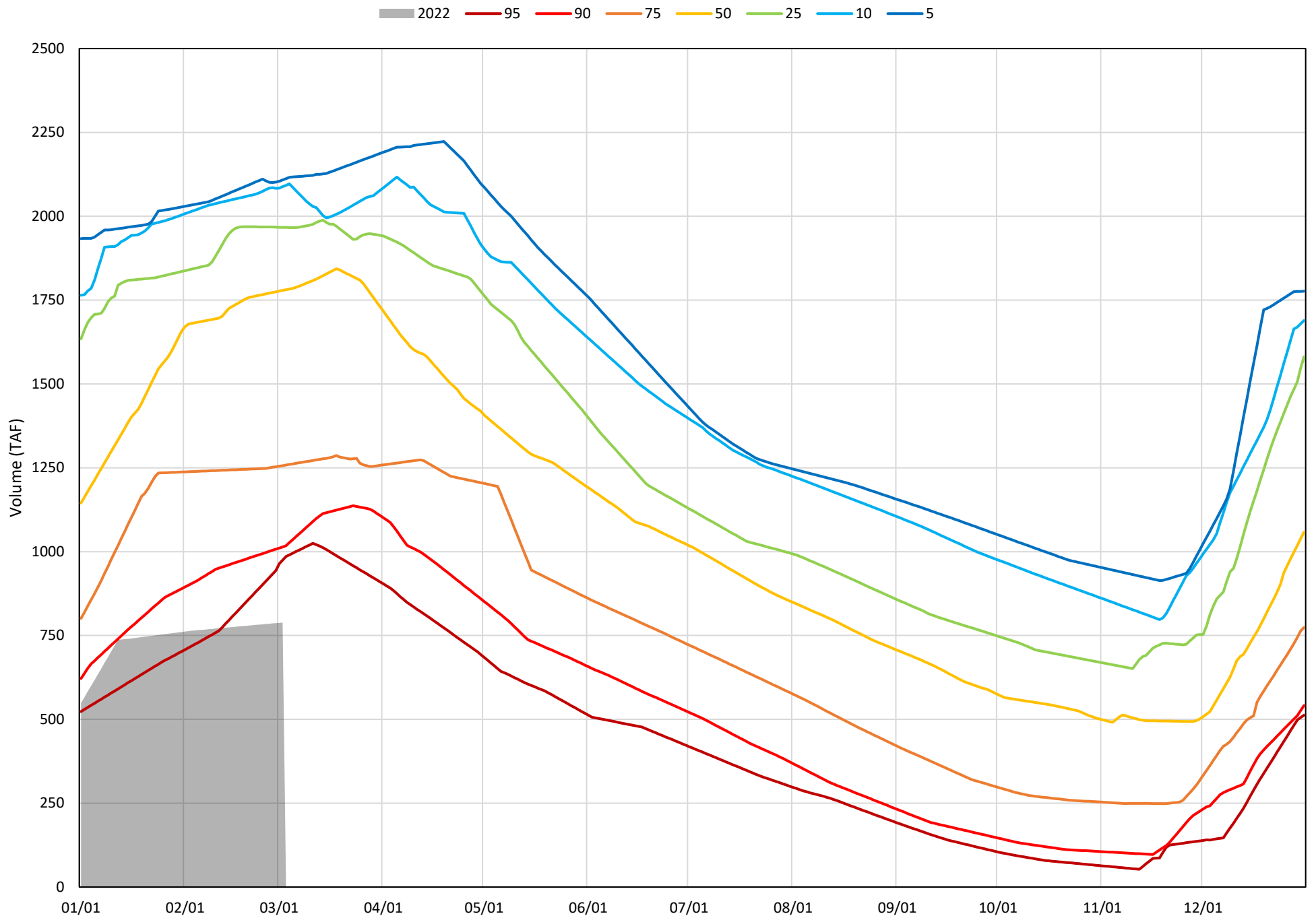
Avg (2000-2021) 2014 2015 2016 2019 2022



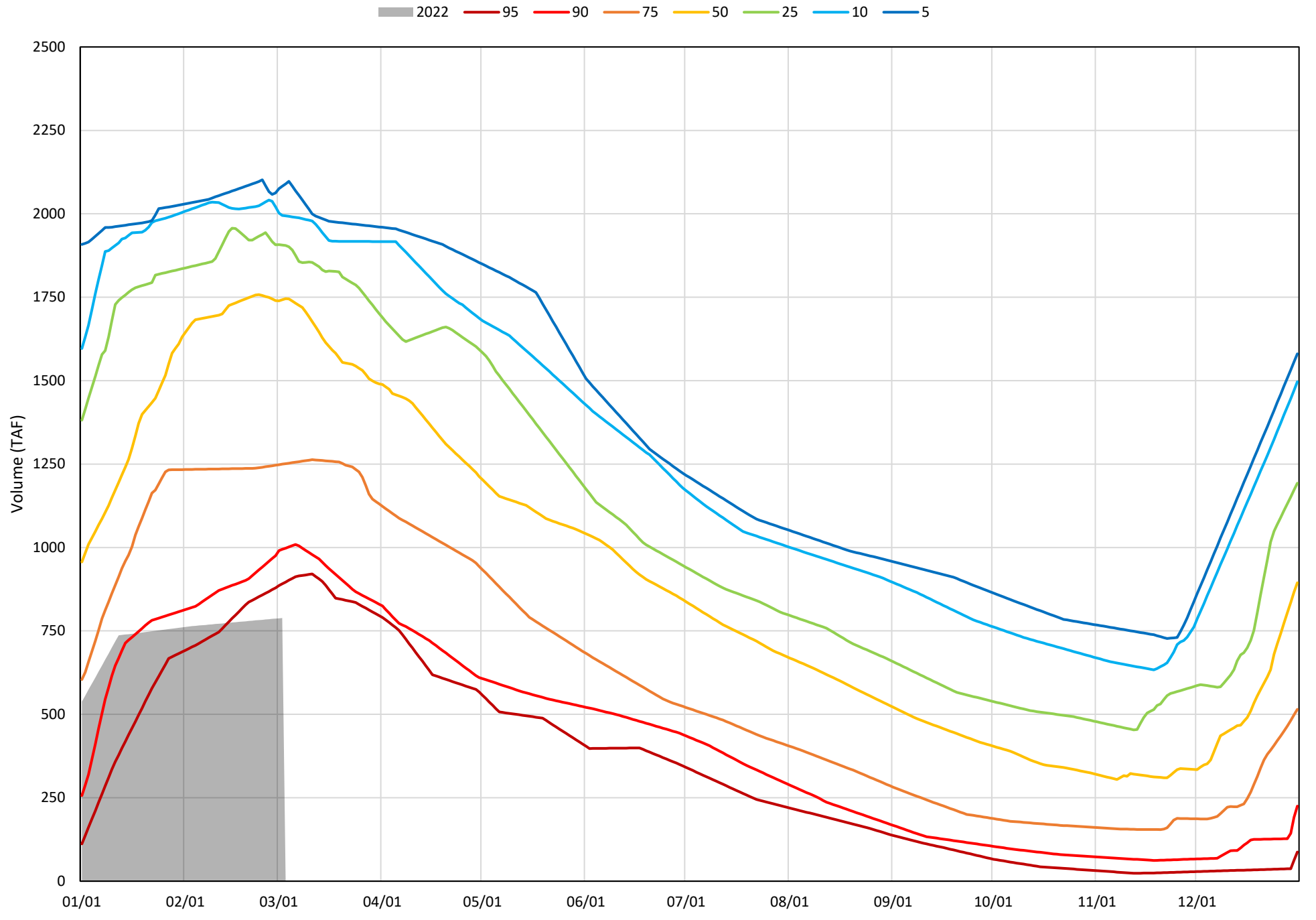
Trinity Lake Cold Water Pool Volume ≤52°F - Percent Exceedances (2000-2021)



Trinity Lake Cold Water Pool Volume $\leq 50^{\circ}\text{F}$ - Percent Exceedances (2000-2021)



Trinity Lake Cold Water Pool Volume $\leq 48^{\circ}\text{F}$ - Percent Exceedances (2000-2021)

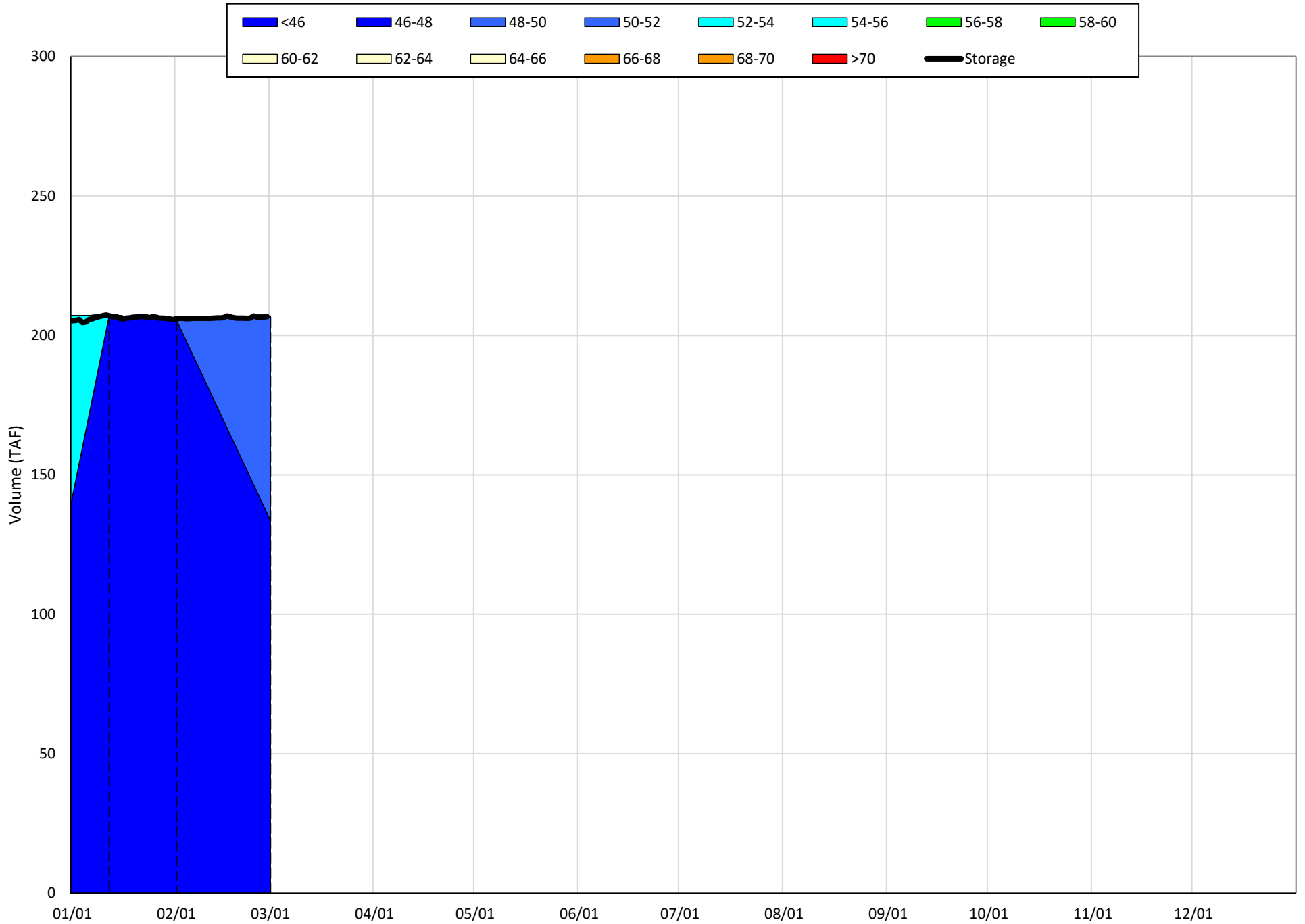


Trinity Cold Water Pool Comparison by Year (for Specified Date)

	Δ TAF				% Δ			
	$\leq 52^\circ$	$\leq 50^\circ$	$\leq 48^\circ$	Abs. Avg.	$\leq 52^\circ$	$\leq 50^\circ$	$\leq 48^\circ$	Abs. Avg.
Mar-03								
2022								
2000	1321	1282	1168	1257	168	163	148	159
2001	914	910	903	909	116	115	115	115
2002	969	969	954	964	123	123	121	122
2003	1162	1158	1060	1127	147	147	134	143
2004	1307	1307	1307	1307	166	166	166	166
2005	904	729	637	757	115	92	81	96
2006	1322	1322	1222	1288	168	168	155	163
2007	1117	1117	930	1054	142	142	118	134
2008	702	702	702	702	89	89	89	89
2009	302	302	302	302	38	38	38	38
2010	390	390	390	390	49	49	49	49
2011	1111	1111	1105	1109	141	141	140	141
2012	1170	1170	1170	1170	148	148	148	148
2013	1202	1202	1155	1186	152	152	146	150
2014	418	418	280	372	53	53	36	47
2015	301	193	90	195	38	24	11	25
2016	185	185	174	181	23	23	22	23
2017	1087	1087	1029	1068	138	138	130	135
2018	1012	1012	1012	1012	128	128	128	128
2019	954	954	954	954	121	121	121	121
2020	1236	1236	984	1152	157	157	125	146
2021	485	485	485	485	61	61	61	61
2022	0	0	0	0	0	0	0	0

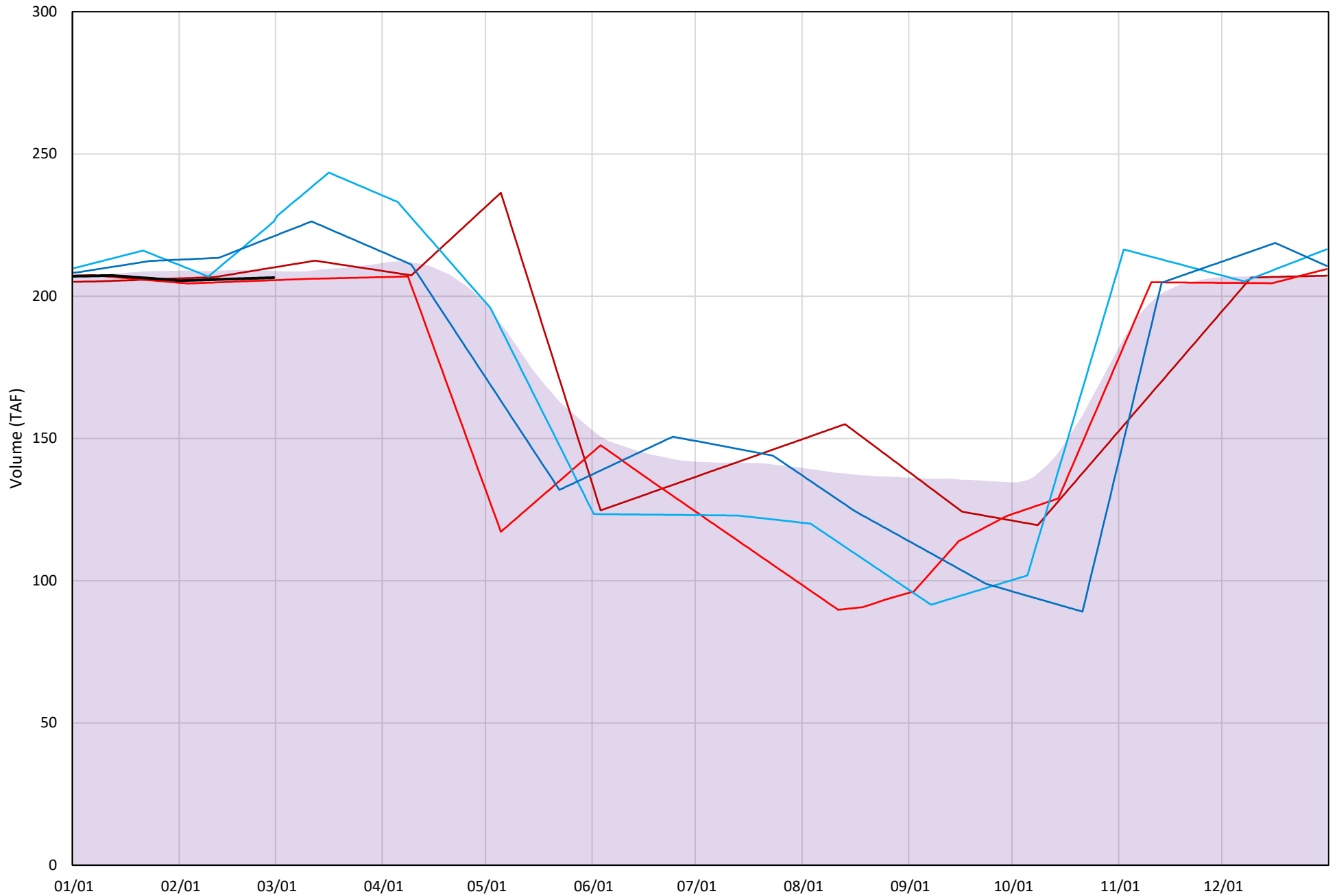
} Historic - Current
} (Historic - Current) / Current

Whiskeytown Lake Isothermobaths Plot - 2022



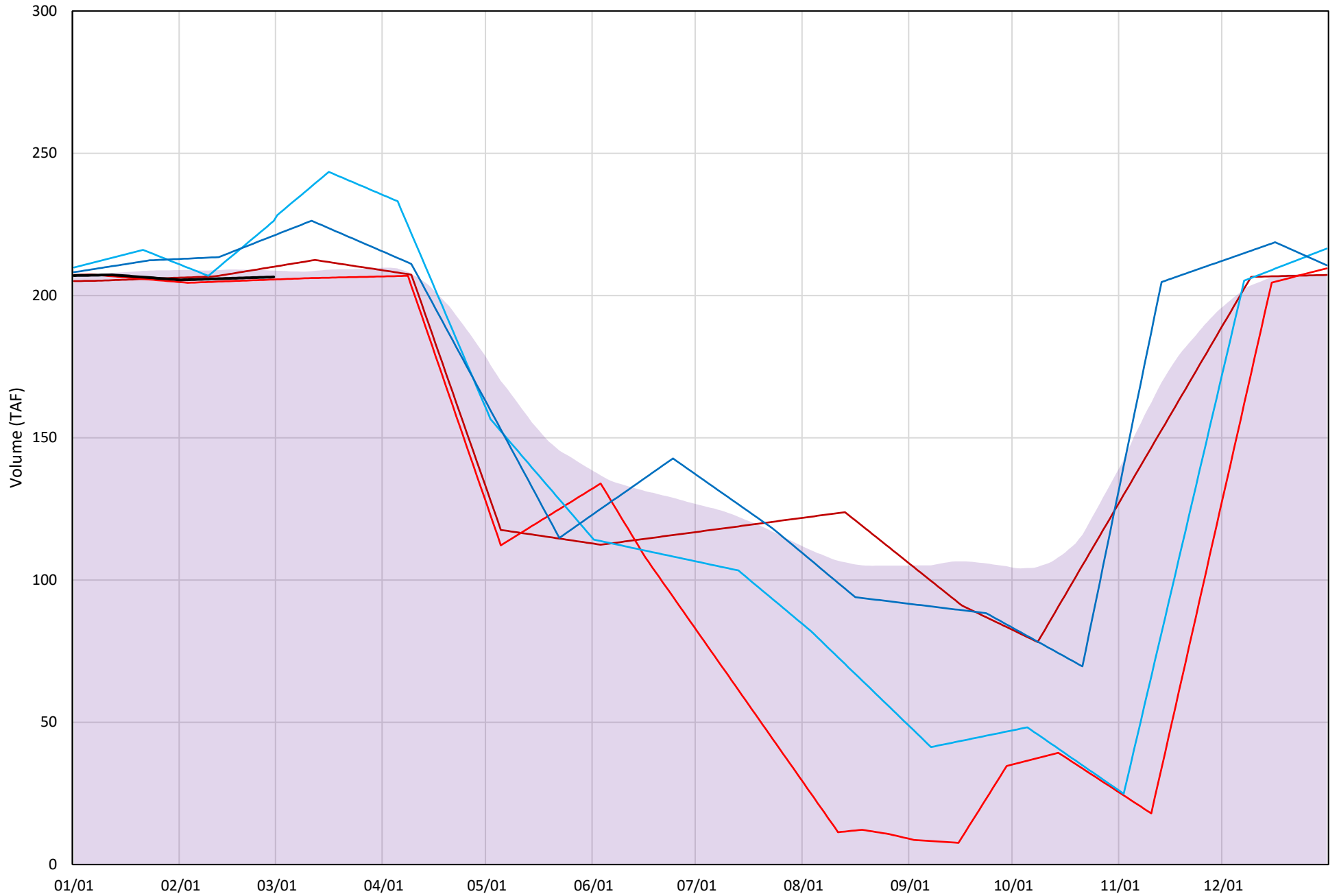
Whiskeytown Lake Cold Water Pool Volume $\leq 60^{\circ}\text{F}$

Avg (2000-2021) 2014 2015 2016 2019 2022



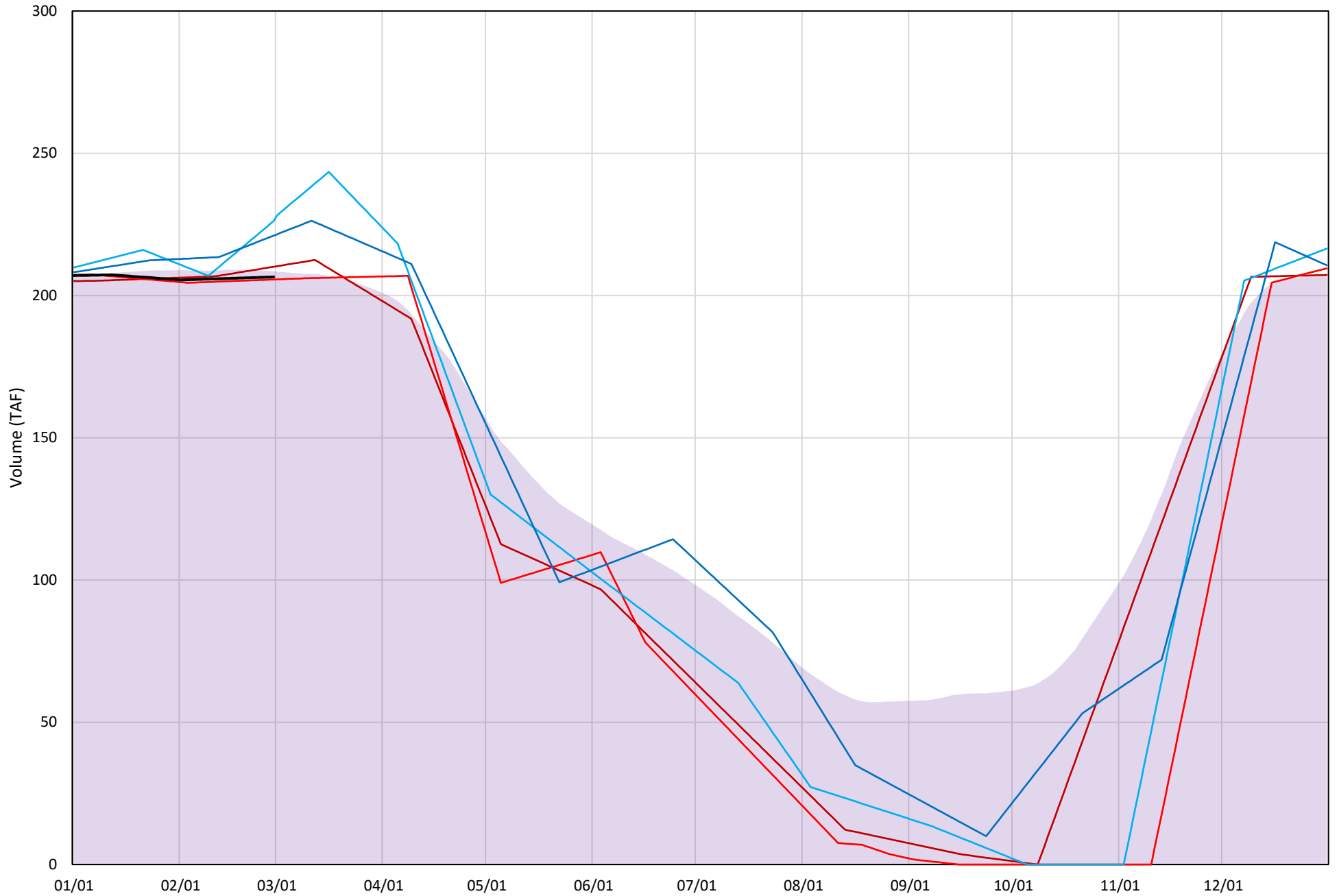
Whiskeytown Lake Cold Water Pool Volume $\leq 58^{\circ}\text{F}$

Avg (2000-2021) 2014 2015 2016 2019 2022



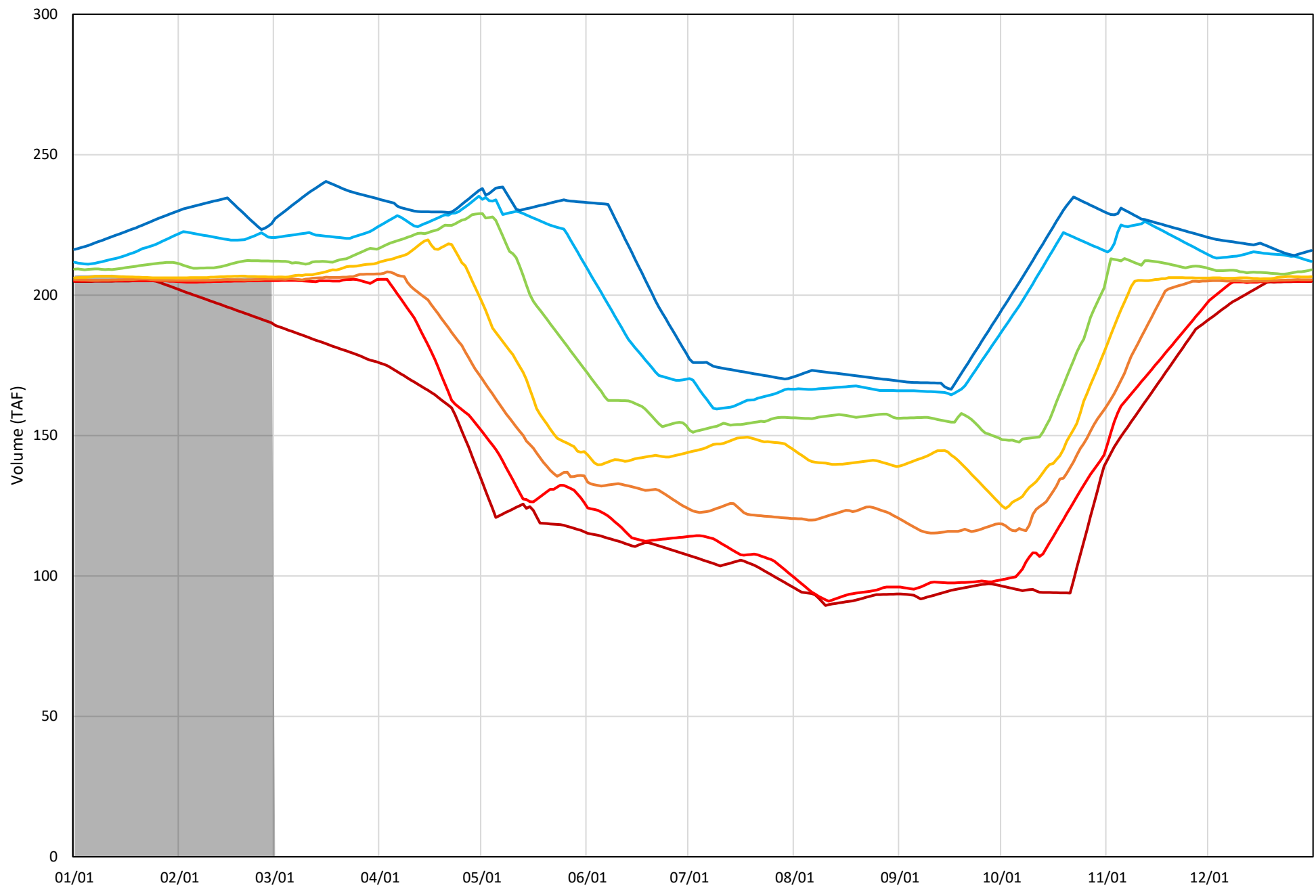
Whiskeytown Lake Cold Water Pool Volume $\leq 56^{\circ}\text{F}$

Avg (2000-2021) 2014 2015 2016 2019 2022



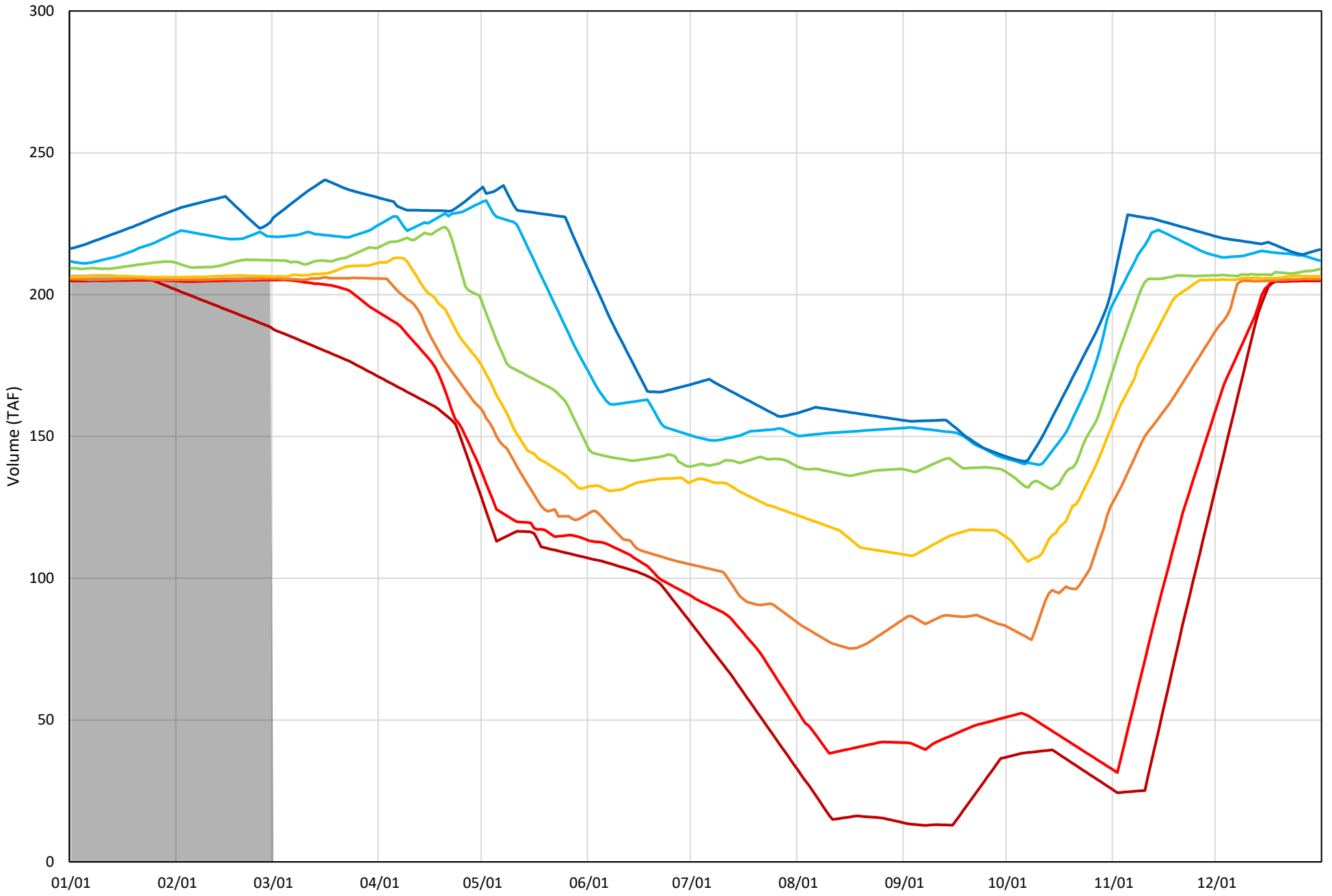
Whiskeytown Lake Cold Water Pool Volume $\leq 60^{\circ}\text{F}$ - Percent Exceedances (2000-2021)

2022 95 90 75 50 25 10 5



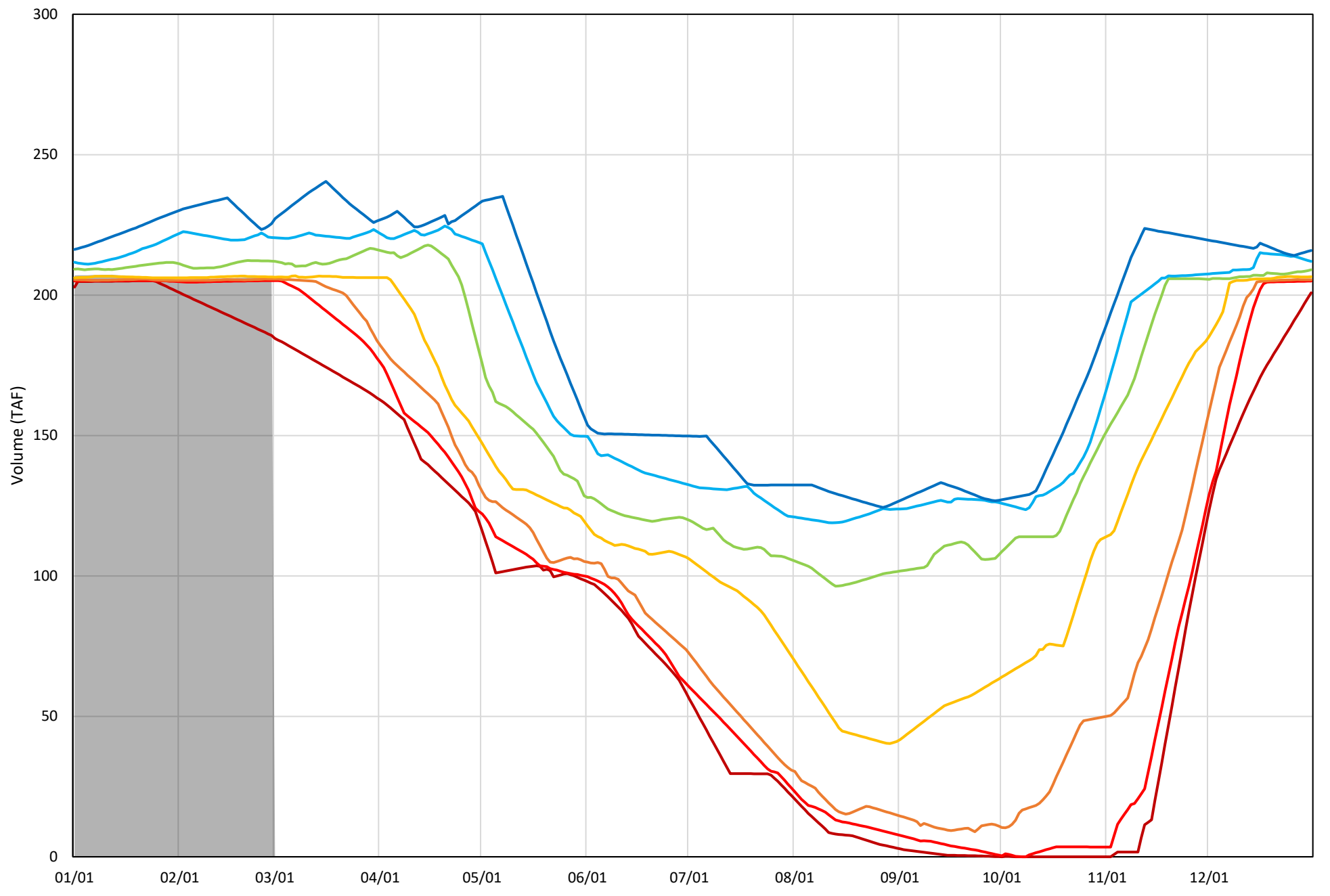
Whiskeytown Lake Cold Water Pool Volume $\leq 58^{\circ}\text{F}$ - Percent Exceedances (2000-2021)

2022 95 90 75 50 25 10 5



Whiskeytown Lake Cold Water Pool Volume $\leq 56^{\circ}\text{F}$ - Percent Exceedances (2000-2021)

2022 95 90 75 50 25 10 5



Whiskeytown Cold Water Pool Comparison by Year (for Specified Date)

Mar-01 2022	Δ TAF				% Δ			
	≤60°	≤58°	≤56°	Abs. Avg.	≤60°	≤58°	≤56°	Abs. Avg.
2000	-0.2	-0.2	-0.2	0.2	-0.1	-0.1	-0.1	0.1
2001	12.0	11.1	8.6	10.6	5.8	5.4	4.2	5.1
2002	-0.9	-0.9	-0.9	0.9	-0.4	-0.4	-0.4	0.4
2003	-0.8	-0.8	-0.8	0.8	-0.4	-0.4	-0.4	0.4
2004	-0.7	-0.7	-0.7	0.7	-0.3	-0.3	-0.3	0.3
2005	0.6	0.6	0.6	0.6	0.3	0.3	0.3	0.3
2006	-0.7	-0.7	-0.7	0.7	-0.3	-0.3	-0.3	0.3
2007	0.1	0.1	0.1	0.1	0.0	0.0	0.0	0.0
2008	2.1	2.1	2.1	2.1	1.0	1.0	1.0	1.0
2009	4.7	4.7	4.7	4.7	2.3	2.3	2.3	2.3
2010	8.2	8.2	8.2	8.2	4.0	4.0	4.0	4.0
2011	-1.2	-1.2	-1.2	1.2	-0.6	-0.6	-0.6	0.6
2012	-19.0	-20.8	-24.3	21.4	-9.2	-10.1	-11.8	10.4
2013	-1.4	-1.4	-1.4	1.4	-0.7	-0.7	-0.7	0.7
2014	3.6	3.6	3.6	3.6	1.7	1.7	1.7	1.7
2015	-0.9	-0.9	-0.9	0.9	-0.4	-0.4	-0.4	0.4
2016	19.7	19.7	19.7	19.7	9.5	9.5	9.5	9.5
2017	12.7	12.7	12.7	12.7	6.2	6.2	6.2	6.2
2018	-0.5	-0.5	-0.5	0.5	-0.3	-0.3	-0.3	0.3
2019	14.5	14.5	14.5	14.5	7.0	7.0	7.0	7.0
2020	-0.8	-0.8	-0.8	0.8	-0.4	-0.4	-0.4	0.4
2021	0.8	0.8	0.8	0.8	0.4	0.4	0.4	0.4
2022	0.0	0.0	0.0	0.0	0.0	0.0	0.0	0.0

Historic - Current

(Historic - Current) / Current

Estimated CVP Operations 90% Exceedance

Storages

Federal End of the Month Storage/Elevation (TAF/Feet)

		Mar	Apr	May	Jun	Jul	Aug	Sep	Oct	Nov	Dec	Jan	Feb
Trinity	788	807	808	729	668	611	528	440	399	375	357	356	385
	Elev.	2232	2232	2221	2212	2204	2190	2173	2165	2160	2156	2155	2162
Whiskeytown	206	206	238	238	238	238	238	238	206	206	206	206	206
	Elev.	1199	1209	1209	1209	1209	1209	1209	1199	1199	1199	1199	1199
Shasta	1690	1727	1753	1683	1577	1459	1332	1252	1294	1339	1410	1538	1745
	Elev.	941	942	938	931	922	913	907	910	914	919	928	942
Folsom	526	571	624	542	421	269	221	222	216	227	246	275	345
	Elev.	425	431	422	406	381	372	372	371	373	377	383	395
New Melones	984	943	895	819	741	678	626	599	568	575	582	588	586
	Elev.	934	927	916	903	892	883	878	871	873	874	876	875
San Luis	314	330	333	246	88	-103	-233	-311	-305	-203	-72	124	169
	Elev.	446	444	433	408	375	344	314	304	342	377	418	428
Total		4583	4651	4257	3732	3151	2712	2439	2378	2518	2729	3088	3435

State End of the Month Reservoir Storage (TAF)

	Mar	Apr	May	Jun	Jul	Aug	Sep	Oct	Nov	Dec	Jan	Feb
Oroville	1646	1688	1606	1360	1063	885	857	829	829	880	990	1001
Elev.	747	751	743	714	674	646	641	636	636	645	663	664
State San Luis	601	581	560	498	440	390	354	326	347	423	547	597
Total San Luis (TAF)	900	930	914	805	586	337	157	43	21	144	671	766

Monthly River Releases (TAF/cfs)

	TAF	Mar	Apr	May	Jun	Jul	Aug	Sep	Oct	Nov	Dec	Jan	Feb
Trinity	TAF	18	36	92	47	28	53	52	23	18	18	18	17
	cfs	300	600	1,498	783	450	857	870	373	300	300	300	300
Clear Creek	TAF	12	12	22	9	9	9	9	12	12	12	12	11
	cfs	200	200	360	150	150	150	150	200	200	200	200	200
Sacramento	TAF	200	208	277	268	277	277	238	200	193	200	200	180
	cfs	3250	3500	4500	4500	4500	4500	4000	3250	3250	3250	3250	3250
American	TAF	98	59	154	167	195	91	33	48	33	34	34	34
	cfs	1600	1000	2500	2812	3165	1480	552	775	550	550	550	610
Stanislaus	TAF	31	27	25	17	9	9	9	35	12	12	13	12
	cfs	500	461	401	290	150	150	150	577	200	200	213	214
Feather	TAF	184	49	53	173	234	189	95	59	57	59	59	188
	cfs	3000	825	860	2900	3800	3080	1600	960	960	960	960	3390

Trinity Diversions (TAF)

	Mar	Apr	May	Jun	Jul	Aug	Sep	Oct	Nov	Dec	Jan	Feb
Carr PP	18	39	26	22	30	31	35	25	20	21	15	10
Spring Crk. PP	10	10	10	15	20	20	25	46	10	12	10	10

Delta Summary (TAF)

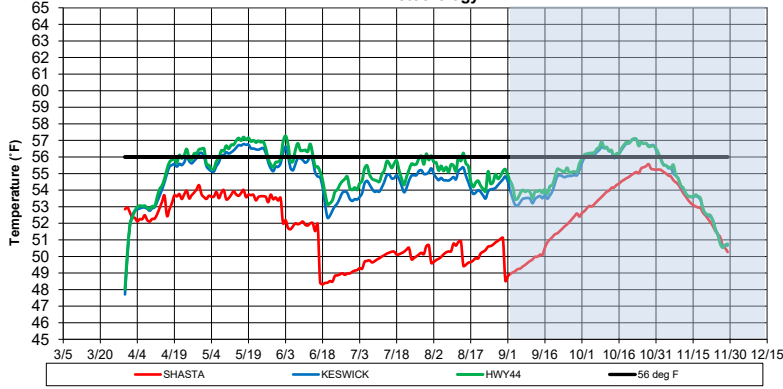
	Mar	Apr	May	Jun	Jul	Aug	Sep	Oct	Nov	Dec	Jan	Feb	
Tracy	60	60	62	48	49	49	49	90	144	153	209	78	
USBR Banks	0	0	0	0	7	7	7	0	0	0	0	0	
Contra Costa	3.5	3.2	3.2	3.2	2.5	2.8	3.2	3.5	4.2	4.6	4.6	3.5	
Total USBR	64	63	65	51	59	59	59	94	148	158	214	82	
State Export	22	30	31	18	20	21	19	18	50	95	161	75	
Total Export	86	92	96	69	79	80	78	112	198	253	375	157	
COA Balance	337	337	337	276	202	163	177	137	137	137	137	26	
Vernalis	TAF	56	60	58	42	32	34	40	64	46	40	74	78
Vernalis	cfs	907	1012	951	710	524	557	671	1049	772	655	1205	1403
Old/Middle River Std.													
Old/Middle R. calc.		-1,253	-1,331	-1,362	-1,166	-1,337	-1,339	-1,300	-1,515	-2,808	-3,459	-4,740	-2,129
Computed DOI		10688	5026	4099	4001	4002	2993	3009	2993	3614	3628	6117	11400
Excess Outflow		1643	1025	98	0	0	0	0	0	118	130	114	0
% Export/Inflow		12%	20%	19%	13%	13%	16%	19%	28%	42%	49%	53%	20%
% Export/Inflow std.		35%	35%	35%	35%	65%	65%	65%	65%	65%	65%	65%	45%

Hydrology

Water Year Inflow (TAF)	Trinity	Shasta	Folsom	New Melones
Year to Date + Forecasted	453	2,859	1,374	465
% of mean	38%	52%	50%	44%

CVP actual operations do not follow any forecasted operation or outlook; actual operations are based on real-time conditions. CVP operational forecasts or outlooks represent general system-wide dynamics and do not necessarily address specific watershed/tributary details. CVP releases or export values represent monthly averages. CVP Operations are updated monthly as new hydrology information is made available December through May.

**Sacramento River Modeled Temperature
2022 March 90%-Exceedance Water Outlook - Historical 25%
Meteorology**



	Shasta deg F	Keswick deg F	Hwy44 deg F	Igo deg F	Trinity deg F	Lewiston deg F
Apr	53.1	54.4	54.6	48.2	45.3	48.3
May	53.6	56.1	56.4	48.6	45.8	49.0
Jun	50.5	54.6	55.3	52.2	46.4	52.6
Jul	50.0	54.4	55.2	53.3	47.1	54.3
Aug	50.2	54.5	55.1	54.1	48.8	53.4
Sep	50.6	54.0	54.4	54.8	52.4	54.8
Oct	54.3	56.5	56.5	56.9	55.8	56.9
Nov	53.1	53.5	53.5	54.9	53.4	53.3

Run date: 4/4/22

EOM Sept storage: 1.25 MAF

Trinity profile date: 3/3/22

Whiskeytown profile date: 3/1/22

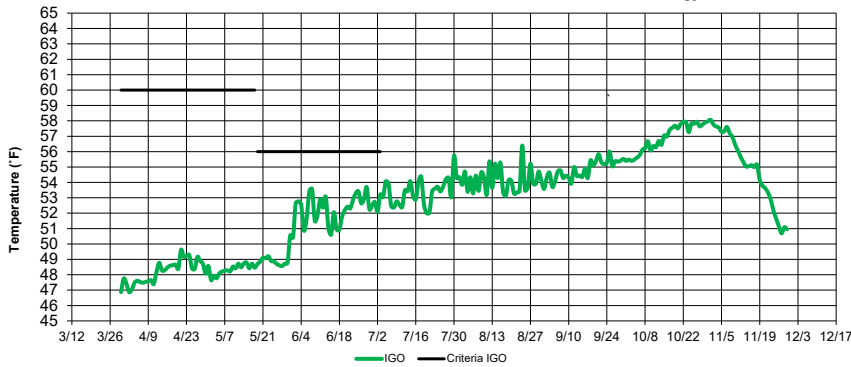
Shasta profile date: 3/30/22

Projected Side gates: First Jul 16 Full Sep 1

Shaded area denotes period of model limitations - see Fall Temperature Index

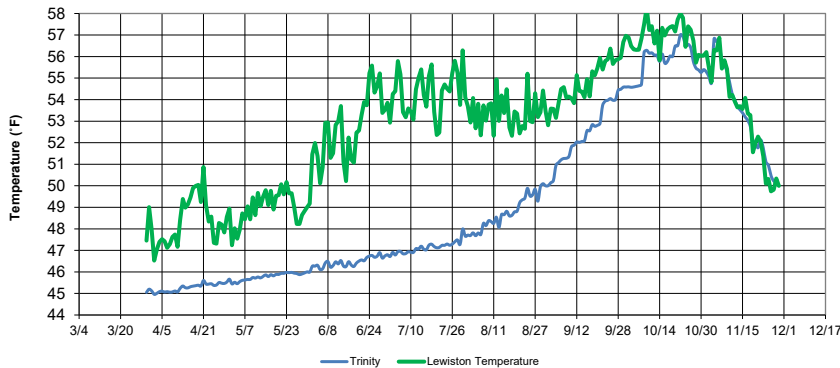
End of September Cold-Water-Pool less than 56 deg F: 183 TAF

**Clear Creek - Igo Modeled Temperature
2022 March 90% Exceedance Outlook - Historical 25% Meteorology**



	Igo deg F
Apr	48.2
May	48.6
Jun	52.2
Jul	53.3
Aug	54.1
Sep	54.8
Oct	56.9
Nov	54.9

**Trinity - Lewiston Modeled Temperature
2022 March 90%-Exceedance Water Outlook - Historical 25% Meteorology**



	Trinity deg F	Lewiston deg F
Apr	45.3	48.3
May	45.8	49.0
Jun	46.4	52.6
Jul	47.1	54.3
Aug	48.8	53.4
Sep	52.4	54.8
Oct	55.8	56.9
Nov	53.4	53.3