

# Northern CVP Water Temperature Report

## February - 2022

Page	Description
2	- Mean Daily Water Temperature, Release Flow Rates and Air Temperatures with Monthly Averages
3	- Redding 10-Day Forecasted Air Temperatures
4	- Sacramento River Mean Daily Water Temperature, Air Temperature and 10-Day Forecasted Air Temperature Plot - Water Temperature Measuring Station Details - Temperature Control Point Details
5	- Shasta Lake Isothermobaths & Cold Water Pool Statistics
14	- Trinity Lake Isothermobaths & Cold Water Pool Statistics
23	- Whiskeytown Lake Isothermobaths & Cold Water Pool Statistics
x	- <a href="#">TCD Configuration</a> (External Link)



— BUREAU OF —  
RECLAMATION

All Data in this Report is Preliminary and Subject to Change

DATE	MDWT TCD <sup>1</sup>	MDWT SHD	MDWT SPP <sup>1</sup>	MDWT KWK	MDWT SAC <sup>2</sup>	MDWT CCR	MDWT BSF	MDWT JLF	MDWT BND	MDWT RDB	MDWT IGO	MDWT LWS	MDWT DGC <sup>3</sup>	MDWT NFH	MDR Shasta Generation	MDR Spring Creek P.P.	MDR Keswick Total	MDAT RDD	MDAT BSF	MDAT RDB
Feb	48.8	48.2	N/A	48.4	48.5	48.4	48.1	47.8	47.8	47.8	46.7	45.3	41.9	42.5	2889	138	3294	50.1	45.8	48.3
02/01	48.1 <sup>X</sup>	47.4	- <sup>C</sup>	47.2	47.3	47.0	46.8	46.8	46.5	46.7	45.5	44.9	40.9	41.5	2568	39	3283	51.0	49.3	50.3
02/02	48.3	47.7	- <sup>C</sup>	46.8	46.9	46.8	46.4	46.4	46.0	46.2	45.2	44.9	40.0	40.4	3151	29	3285	50.0	48.3	49.3
02/03	48.2	47.6	- <sup>C</sup>	46.7	47.0	47.0	47.0	46.9	46.6	46.7	46.1	45.0	41.0	40.9	2867	14	3288	54.0	49.6	52.4
02/04	48	47.5	- <sup>C</sup>	47.1	47.2	47.3	47.3	47.5	47.2	47.5	46.4	44.9	41.5	41.7	2821	98	3285	50.0	45.5	50.5
02/05	48.2	47.6	- <sup>C</sup>	- <sup>C</sup>	47.7	47.9	47.9	48.1	47.8	48.1	46.6	44.9	41.8	42.3	3051	14	3288	56.0	50.4	54.8
02/06	48.3	47.8	- <sup>C</sup>	- <sup>C</sup>	48.0	48.3	48.5	48.7	48.4	48.6	46.9	44.9	41.6	42.1	3040	14	3281	58.5 <sup>D</sup>	51.0	56.3
02/07	48.4	47.6	- <sup>C</sup>	- <sup>C</sup>	48.0	48.2	48.5	48.9	48.7	49.1	46.5	44.9	41.7	42.2	2774	14	3285	52.5	47.8	50.8
02/08	48.7 <sup>X</sup>	47.8	- <sup>C</sup>	- <sup>B</sup>	48.3	48.6	48.9	49.2	49.0	49.4	47.2	45.1	42.1	42.6	1822	26	3286	59.5	56.0	61.0
02/09	49.1	48.5	- <sup>C</sup>	48.3	48.6	49.2	49.7	50.2	50.1	50.2	48.0	45.3	42.8	43.3	3109	36	3277	73 <sup>D</sup>	62.0	64.1
02/10	49.1	48.6	- <sup>C</sup>	48.6	48.9	49.7		51.5	51.4	51.7	48.3	45.6	44 <sup>A</sup>	45.2	2743	14	3274	68.5 <sup>D</sup>	-	65.4
02/11	49.3	48.8	- <sup>C</sup>	49.1	49.2	49.8	50.7	51.6	51.7	52.5	48.0	45.7	- <sup>B</sup>	45.2	3024	14	3279	63 <sup>D</sup>	57.5	60.8
02/12	49.1	48.8	- <sup>C</sup>	49.3	49.4	49.9	50.6	51.4	51.3	52.1	47.4	45.7	- <sup>B</sup>	44.9	3012	15	3283	60.0	53.8	58.3
02/13	49	48.6	- <sup>C</sup>	49.4	49.5	49.9	50.5	51.1	51.1	51.8	47.3	46.0	44.0	44.8	2939	14	3286	57.5	52.5	55.9
02/14	48.7	48.3	- <sup>C</sup>	49.3	49.5	50.0	50.5	51.2	51.2	51.6	47.4	46.3	44.8	45.5	3941	14	3284	54.5	51.8	53.5
02/15	49.2	48.2	- <sup>C</sup>	49.3	49.3	49.4	49.8	50.3	50.2	50.8	46.8	46.0	43.5	44.5	2887	33	3281	53.0	51.4	52.8
02/16	49.2	48.5	- <sup>C</sup>	49.1	49.3	49.6	49.8	- <sup>C</sup>	50.0	50.5	47.3	46.2	43.0	43.6	2789	54	3296	55.5	52.8	56.3
02/17	49.2	48.8	- <sup>C</sup>	48.9	49.1	49.4	50.0	- <sup>C</sup>	50.5	50.8	47.3	46.7	42.9	43.4	3315	47	3280	58.0	55.3	56.0
02/18	49.2	48.5	- <sup>C</sup>	48.7	48.9	49.3	49.7	- <sup>C</sup>	50.3	50.9	47.2	46.8	43.8	43.9	2912	76	3286	54.0	49.8	52.0
02/19	49.2	48.7	- <sup>C</sup>	49.0	49.2	49.5	50.0	- <sup>C</sup>	50.5	50.9	47.3	46.9	44.6	44.8	2748	77	3292	54.0	49.8	53.0
02/20	49.3	48.7	- <sup>C</sup>	49.2	49.3	49.7	50.4	- <sup>C</sup>	50.9	51.2	47.5	46.8	45.2	45.4	2644	47	3281	54.0	50.8	52.4
02/21	49.0	48.4	- <sup>C</sup>	49.0	49.0	49.1	49.4	- <sup>C</sup>	50.0	50.5	56.7	46.7	43.6	44.3	2715	93	3290	46.5	48.0	49.0
02/22	49.3	48.5	- <sup>C</sup>	49.0	48.9	48.8	48.7	- <sup>C</sup>	48.6	49.3	56.9	46.8	42.6	43.0	2949	92	3291	42.0	40.0	43.2
02/23	48.9	48.4	- <sup>C</sup>	48.8	48.7	48.5	47.8	- <sup>C</sup>	47.4	47.9	56.7	46.6	42.0	42.4	2949	92	3291	44.0	42.0	43.5
02/24	48.6 <sup>A</sup>	48.2 <sup>A</sup>	- <sup>C</sup>	48.3 <sup>A</sup>	48.4 <sup>A</sup>	48.4 <sup>A</sup>	47.8 <sup>A</sup>	- <sup>C</sup>	47.1 <sup>A</sup>	47.3 <sup>A</sup>	45.9 <sup>A</sup>	46.5 <sup>A</sup>	41.9	41.9 <sup>A</sup>	2963	112	3274	40.5 <sup>E</sup>	37.1	40.5
Mo/D																				
Mo/D																				
Mo/D																				
Mo/D																				
March	48.8	48.2	-	48.6	48.6	48.8	49.0	49.3	49.3	49.7	46.9	45.8	42.7	43.3	2906	45	3284	54.6	50.1	53.4

**Legend**

- A = 1-9 hours of data missing (Average includes estimations)
- B = 10 or more hours of data missing (Average not calculated)
- C = Station out of service
- D = Record high air temperature
- E = Record low air temperature
- MDWT = Mean Daily Water Temperature (Fahrenheit)
- MDR = Mean Daily Release (CFS)
- MDAT = Mean Daily Air Temperatures (Fahrenheit)

**Notes**

- <sup>1</sup> Temperatures are weighted averages based on individual penstock flow and temperature
- <sup>X</sup> Highlighted cells in the TCD column indicate a TCD change was made on that day
- <sup>2</sup> Current Sacramento River control point (see page 4 for more details)
- <sup>3</sup> Data is currently being collected locally and periodically downloaded. Once downloaded and certified by USGS, missing data will be added.

Total CF	69733	1078	78826
Total AF	138313	2138	156348

**Redding (RDD) Daily Air Temperatures (°F)  
Forecasted**

DATE	Previous Low	Previous High	Previous Avg	Current Low	Current High	Current Avg	1 Day Low <sup>x</sup>	1 Day High <sup>x</sup>	1 Day Avg <sup>x</sup>	2 Day Low <sup>x</sup>	2 Day High <sup>x</sup>	2 Day Avg <sup>x</sup>	3 Day Low <sup>x</sup>	3 Day High <sup>x</sup>	3 Day Avg <sup>x</sup>	4 Day Low <sup>x</sup>	4 Day High <sup>x</sup>	4 Day Avg <sup>x</sup>
02/01	32	66	49.0	46	58	52.0	34	60	47.0	35	67	51.0	35	67	51.0	36	69	52.5
02/02	43	59	51.0	47	60	53.0	35	65	50.0	34	65	49.5	37	71	54.0	39	73	56.0
02/03	40	60	50.0	48	67	54.0	34	65	49.5	37	74	55.5	41	75	58.0	37	73	55.0
02/04	39	69	54.0	49	67	55.0	36	75	55.5	40	76	58.0	37	73	55.0	43	76	59.5
02/05	34	66	50.0	50	73	56.0	38	75	56.5	37	74	55.5	42	77	59.5	39	79	59.0
02/06	37	75	56.0	51	76	57.0	36	74	55.0	39	79	59.0	43	79	61.0	43	79	61.0
02/07	39	<b>78<sup>A</sup></b>	58.5	52	76	58.0	43	79	61.0	48	80	64.0	47	82	64.5	43	80	61.5
02/08	33	72	52.5	53	78	59.0	49	79	64.0	49	83	66.0	44	83	63.5	44	80	62.0
02/09	39	80	59.5	54	80	60.0	50	84	67.0	46	84	65.0	43	80	61.5	41	80	60.5
02/10	65	<b>81<sup>A</sup></b>	73.0	55	85	61.0	49	85	67.0	44	80	62.0	43	79	61.0	42	68	55.0
02/11	53	<b>84<sup>A</sup></b>	68.5	56	87	62.0	57	84	70.5	43	79	61.0	43	68	55.5	38	66	52.0
02/12	41	<b>85<sup>A</sup></b>	63.0	57	81	63.0	44	79	61.5	44	72	58.0	38	67	52.5	38	71	54.5
02/13	40	80	60.0	58	78	64.0	44	71	57.5	37	65	51.0	38	72	55.0	41	74	57.5
02/14	39	76	57.5	59	70	65.0	37	65	51.0	38	70	54.0	40	73	56.5	38	72	55.0
02/15	42	67	54.5	60	65	66.0	41	71	56.0	41	74	57.5	40	73	56.5	39	72	55.5
02/16	42	64	53.0	61	68	67.0	40	72	56.0	38	75	56.5	38	74	56.0	39	64	51.5
02/17	41	70	55.5	62	75	68.0	37	77	57.0	39	74	56.5	38	67	52.5	34	61	47.5
02/18	43	73	58.0	63	73	69.0	37	75	56.0	39	68	53.5	33	60	46.5	30	57	43.5
02/19	33	75	54.0	64	74	70.0	39	68	53.5	35	59	47.0	32	54	43.0	29	57	43.0
02/20	35	73	54.0	65	67	71.0	36	57	46.5	32	54	43.0	30	55	42.5	26	59	42.5
02/21	40	68	54.0	66	57	72.0	32	54	43.0	29	59	44.0	26	59	42.5	29	70	49.5
02/22	36	57	46.5	67	55	73.0	28	55	41.5	25	60	42.5	28	65	46.5	30	64	47.0
02/23	30	54	42.0	68	56	74.0	24	59	41.5	28	65	46.5	29	63	46.0	38	61	49.5
02/24	33	55	44.0	69	57	75.0	27	63	45.0	29	63	46.0	38	63	50.5	40	65	52.5
02/25	24 <sup>A</sup>	57	40.5	70	64	76.0	28	63	45.5	39	65	52.0	38	71	54.5	43	72	57.5
Mo/D																		
Mo/D																		
Mo/D																		

Web Links

[10-Day Min/Max Forecast](#)  
[Previous Days Min/Max Actuals](#)

Legend

NR = Forecasted temperatures not recorded  
**A** = Record temperature for that date  
**X** = Forecasted

**Redding (RDD) Daily Air Temperatures (°F)  
Forecasted**

DATE	5 Day Low <sup>x</sup>	5 Day High <sup>x</sup>	5 Day Avg <sup>x</sup>	6 Day Low <sup>x</sup>	6 Day High <sup>x</sup>	6 Day Avg <sup>x</sup>	7 Day Low <sup>x</sup>	7 Day High <sup>x</sup>	7 Day Avg <sup>x</sup>	8 Day Low <sup>x</sup>	8 Day High <sup>x</sup>	8 Day Avg <sup>x</sup>	9 Day Low <sup>x</sup>	9 Day High <sup>x</sup>	9 Day Avg <sup>x</sup>	10 Day Low <sup>x</sup>	10 Day High <sup>x</sup>	10 Day Avg <sup>x</sup>
02/01	37	72	54.5	36	70	53.0	41	71	56.0	42	69	55.5	40	70	55.0	43	72	57.5
02/02	36	72	54.0	39	75	57.0	49	70	59.5	45	71	58.0	43	69	56.0	41	69	55.0
02/03	40	75	57.5	44	76	60.0	46	73	59.5	45	72	58.5	44	72	58.0	43	71	57.0
02/04	47	78	62.5	47	78	62.5	45	73	59.0	44	71	57.5	43	69	56.0	44	70	57.0
02/05	46	78	62.0	42	77	59.5	47	75	61.0	41	68	54.5	43	66	54.5	43	70	56.5
02/06	43	77	60.0	45	77	61.0	45	72	58.5	42	63	52.5	44	66	55.0	41	70	55.5
02/07	43	78	60.5	43	75	59.0	43	73	58.0	45	68	56.5	42	67	54.5	40	69	54.5
02/08	43	79	61.0	43	73	58.0	42	63	52.5	37	68	52.5	41	68	54.5	42	66	54.0
02/09	42	72	57.0	39	68	53.5	41	67	54.0	41	71	56.0	40	70	55.0	42	68	55.0
02/10	39	67	53.0	38	71	54.5	45	72	58.5	48	70	59.0	45	69	57.0	45	69	57.0
02/11	39	71	55.0	41	74	57.5	41	70	55.5	42	69	55.5	41	69	55.0	42	70	56.0
02/12	42	75	58.5	39	73	56.0	44	72	58.0	44	67	55.5	44	62	53.0	42	68	55.0
02/13	39	73	56.0	40	72	56.0	42	68	55.0	41	67	54.0	41	70	55.5	41	67	54.0
02/14	38	71	54.5	41	65	53.0	41	59	50.0	42	66	54.0	40	66	53.0	42	63	52.5
02/15	39	65	52.0	36	65	50.5	45	65	55.0	40	67	53.5	40	67	53.5	44	68	56.0
02/16	33	61	47.0	33	62	47.5	43	63	53.0	35	67	51.0	38	65	51.5	41	69	55.0
02/17	33	61	47.0	32	61	46.5	35	66	50.5	35	67	51.0	41	67	54.0	41	69	55.0
02/18	30	59	44.5	29	62	45.5	36	69	52.5	42	66	54.0	43	65	54.0	42	65	53.5
02/19	28	61	44.5	32	63	47.5	44	60	52.0	43	59	51.0	45	64	54.5	40	64	52.0
02/20	30	64	47.0	32	64	48.0	41	70	55.5	45	74	59.5	43	73	58.0	46	71	58.5
02/21	32	65	48.5	39	65	52.0	45	71	58.0	44	73	58.5	47	67	57.0	46	66	56.0
02/22	36	65	50.5	39	69	54.0	46	72	59.0	45	71	58.0	46	69	57.5	42	66	54.0
02/23	37	69	53.0	42	67	54.5	45	72	58.5	42	73	57.5	40	69	54.5	41	66	53.5
02/24	44	69	56.5	45	67	56.0	50	74	62.0	42	69	55.5	43	69	56.0	46	71	58.5
02/25	43	69	56.0	42	64	53.0	43	72	57.5	40	68	54.0	37	67	52.0	40	68	54.0
Mo/D																		
Mo/D																		
Mo/D																		

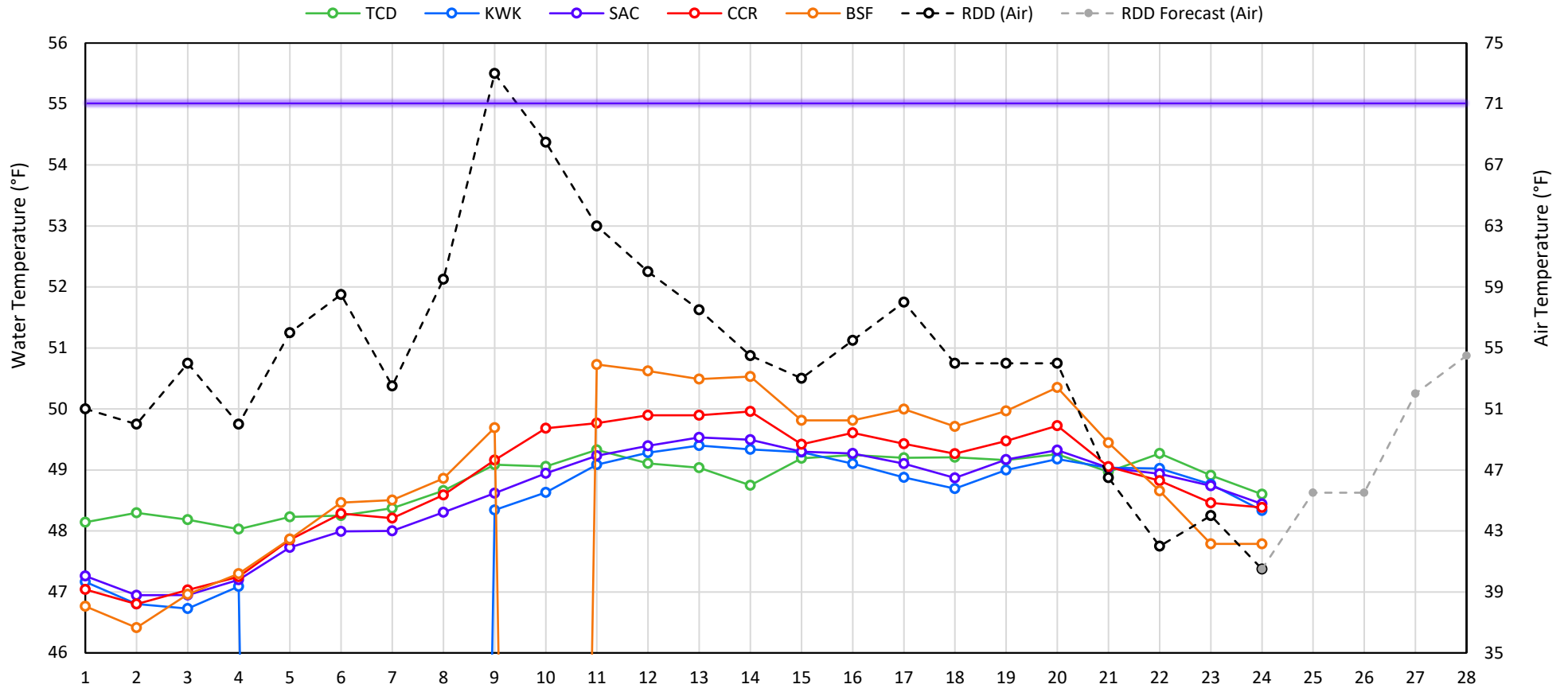
Web Links

- [10-Day Min/Max Forecast](#)
- [Previous Days Min/Max Actuals](#)

Legend

- NR = Forecasted temperatures not recorded
- A** = Record temperature for that date
- X** = Forecasted

## Mean Daily Temperatures



Station Details			
Code	Body of Water	Location <sup>1</sup>	CDEC Link
TCD	N/A	Shasta Power Plant	N/A
SHD	Sacramento River	0.3 miles downstream of Shasta Power Plant	<a href="#">Click Here</a>
SPP	N/A	Spring Creek Power Plant	N/A
KWK	Sacramento River	0.8 miles downstream of Keswick Dam	<a href="#">Click Here</a>
SAC	Sacramento River	4.8 miles downstream of Keswick Dam	<a href="#">Click Here</a>
CCR	Sacramento River	9.7 miles downstream of Keswick Dam	<a href="#">Click Here</a>
BSF	Sacramento River	25 miles downstream of Keswick Dam	<a href="#">Click Here</a>
JLF	Sacramento River	34 miles downstream of Keswick Dam	<a href="#">Click Here</a>
BND	Sacramento River	41 miles downstream of Keswick Dam	<a href="#">Click Here</a>
RDB	Sacramento River	58 miles downstream of Keswick Dam	<a href="#">Click Here</a>
IGO	Clear Creek	7.3 miles downstream of Whiskeytown Dam	<a href="#">Click Here</a>
LWS	Trinity River	1.1 miles downstream of Lewiston Dam	<a href="#">Click Here</a>
DGC	Trinity River	19 miles downstream of Lewiston Dam	<a href="#">Click Here</a>
NFH	Trinity River	38 miles downstream of Lewiston Dam	<a href="#">Click Here</a>

Water Right Temperature Control Points				
River	Point	Temp. (°F)	Begin Date	End Date
Sacramento	CCR	56	09/21/2020	04/18/2021
Sacramento	CCR	60	04/18/2021	05/17/2021
Sacramento	SAC	57	05/17/2021	06/15/2021
<b>Sacramento</b>	<b>SAC</b>	<b>55</b>	<b>06/15/2021</b>	<b>TBD</b>
Trinity	DGC	56	09/15/2021	10/01/2021
Trinity	NFH	56	10/01/2021	12/31/2021

### Notes

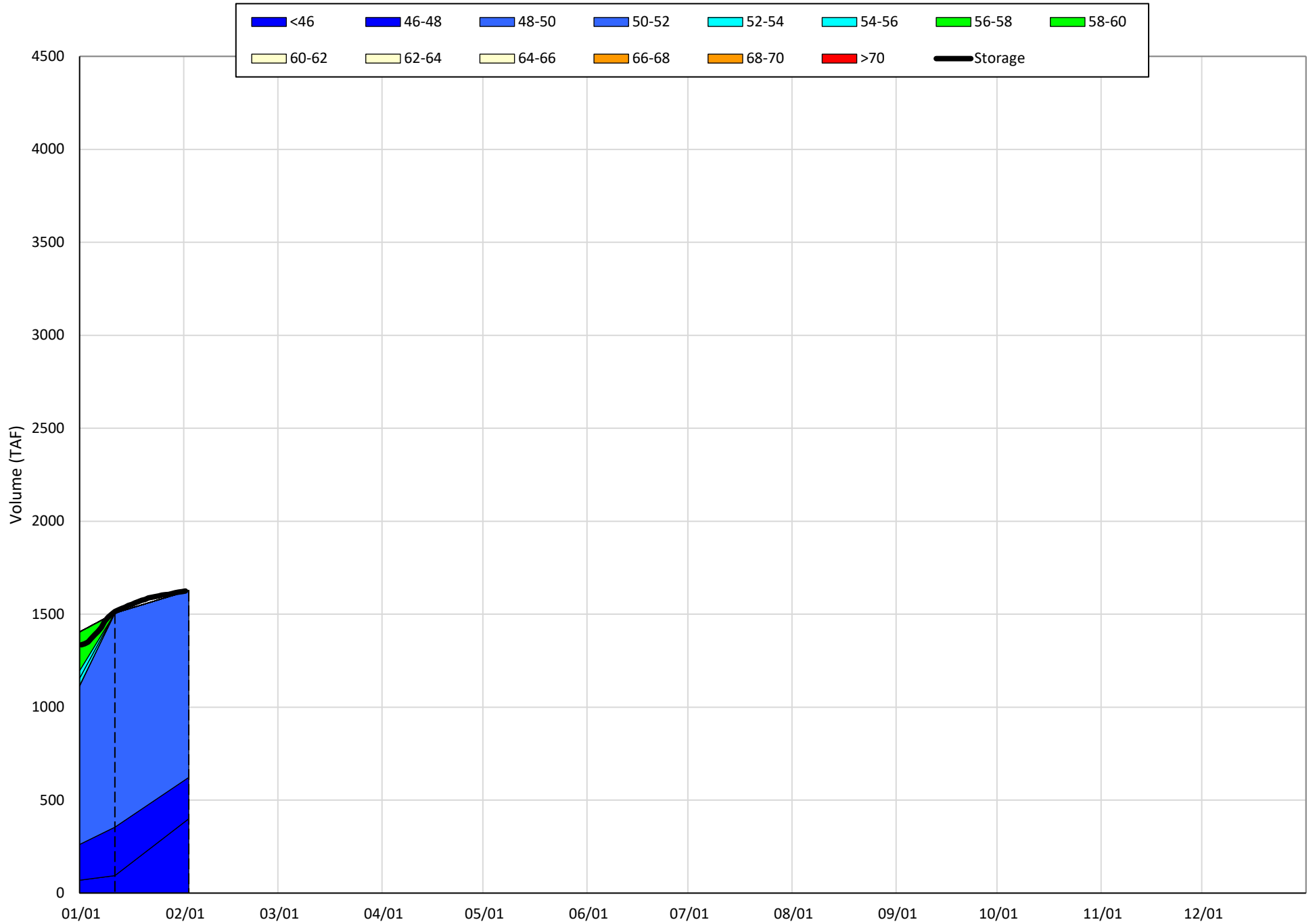
<sup>1</sup> Distances are approximate

# Shasta Lake Isothermobaths & Cold Water Pool Statistics

## 2022

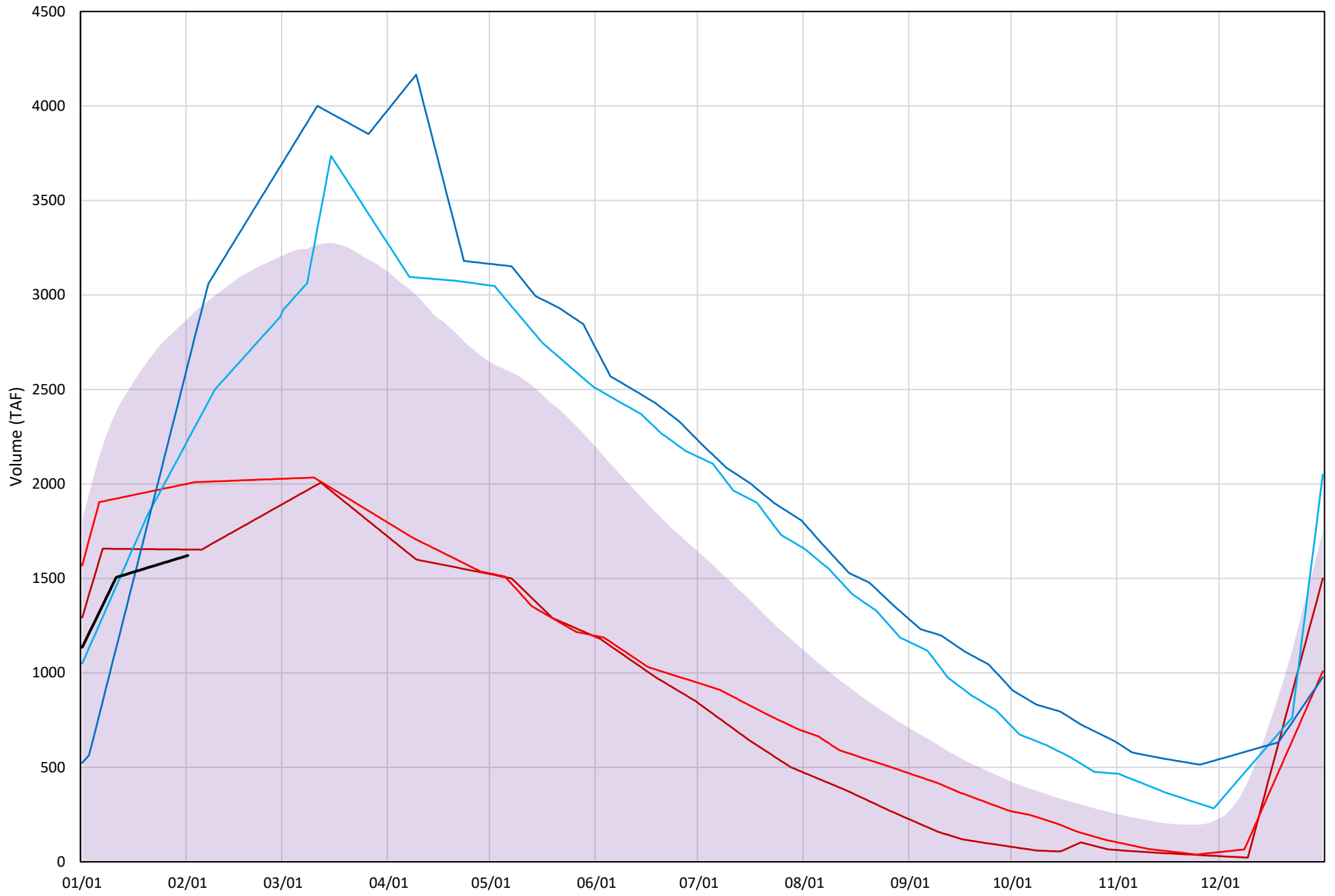
Page	Description
6	- Shasta Lake Isothermobaths Plot
7	- Shasta Lake Cold Water Pool Volume $\leq 52^{\circ}\text{F}$
8	- Shasta Lake Cold Water Pool Volume $\leq 50^{\circ}\text{F}$
9	- Shasta Lake Cold Water Pool Volume $\leq 48^{\circ}\text{F}$
10	- Shasta Lake Cold Water Pool Volume $\leq 52^{\circ}\text{F}$ - Percent Exceedances
11	- Shasta Lake Cold Water Pool Volume $\leq 50^{\circ}\text{F}$ - Percent Exceedances
12	- Shasta Lake Cold Water Pool Volume $\leq 48^{\circ}\text{F}$ - Percent Exceedances
13	- Shasta Lake Cold Water Pool Comparison by Year

Shasta Lake Isothermobaths Plot - 2022



# Shasta Lake Cold Water Pool Volume $\leq 52^{\circ}\text{F}$

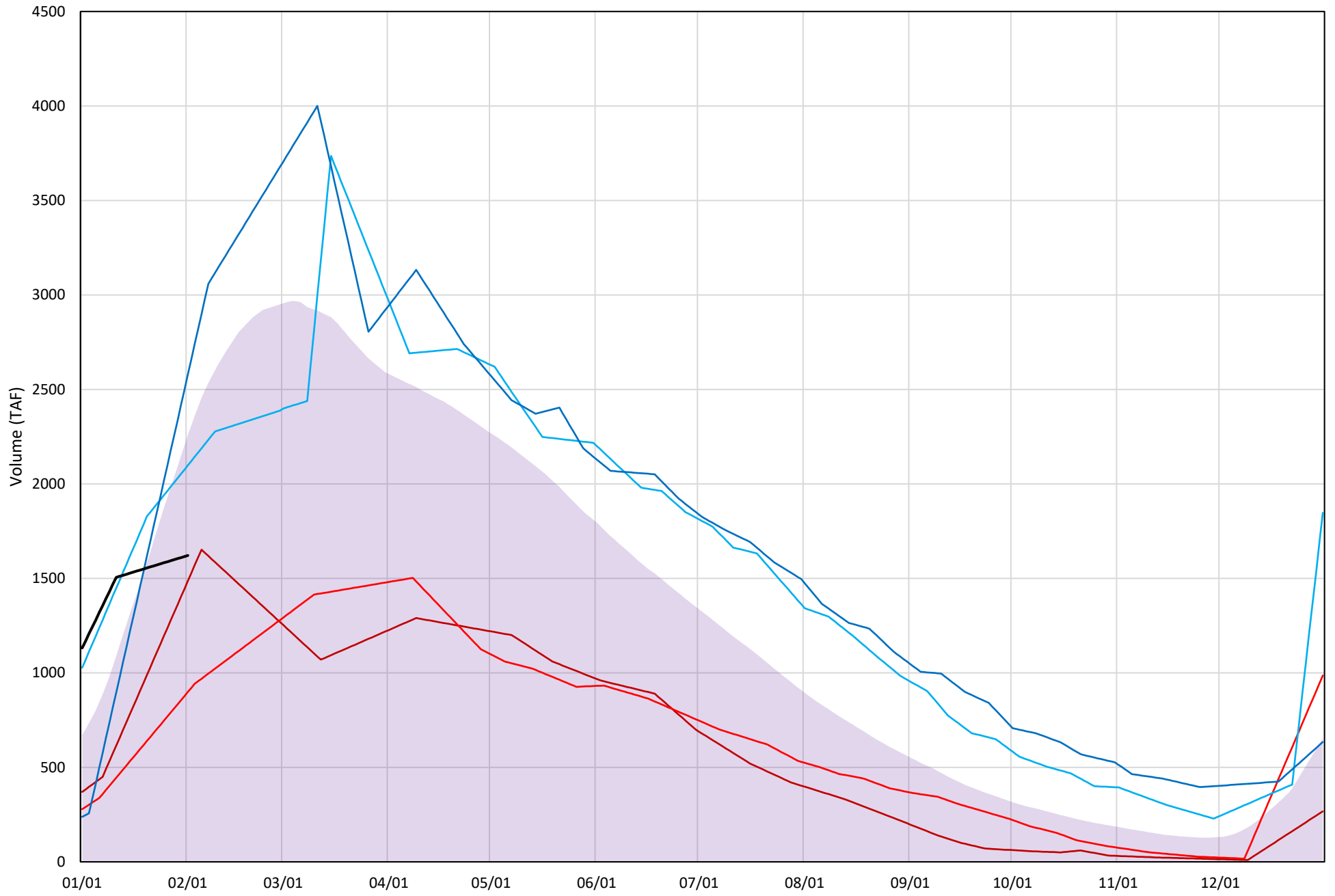
Avg (1998-2021) 2014 2015 2016 2019 2022





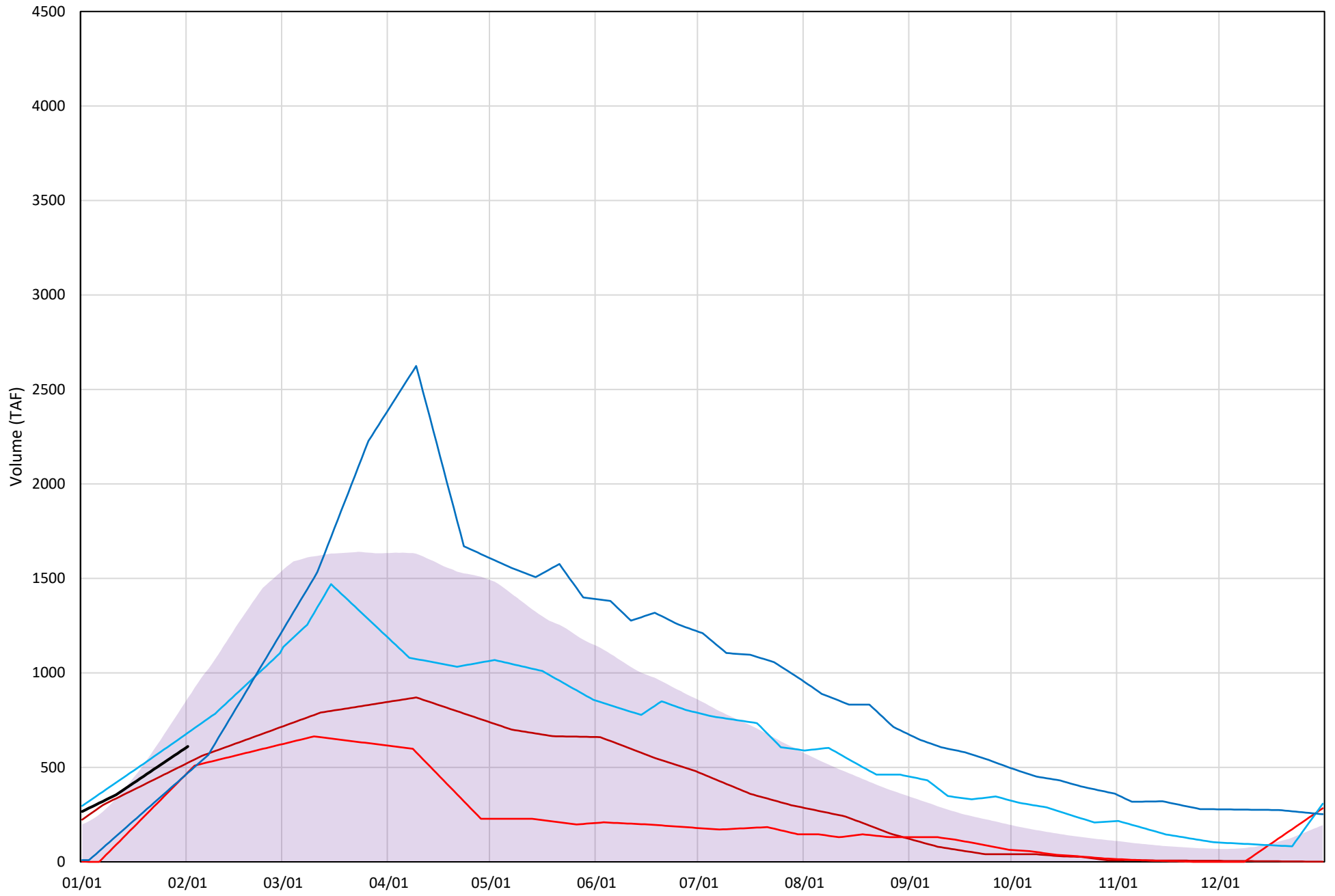
# Shasta Lake Cold Water Pool Volume $\leq 50^{\circ}\text{F}$

Avg (1998-2021) 2014 2015 2016 2019 2022



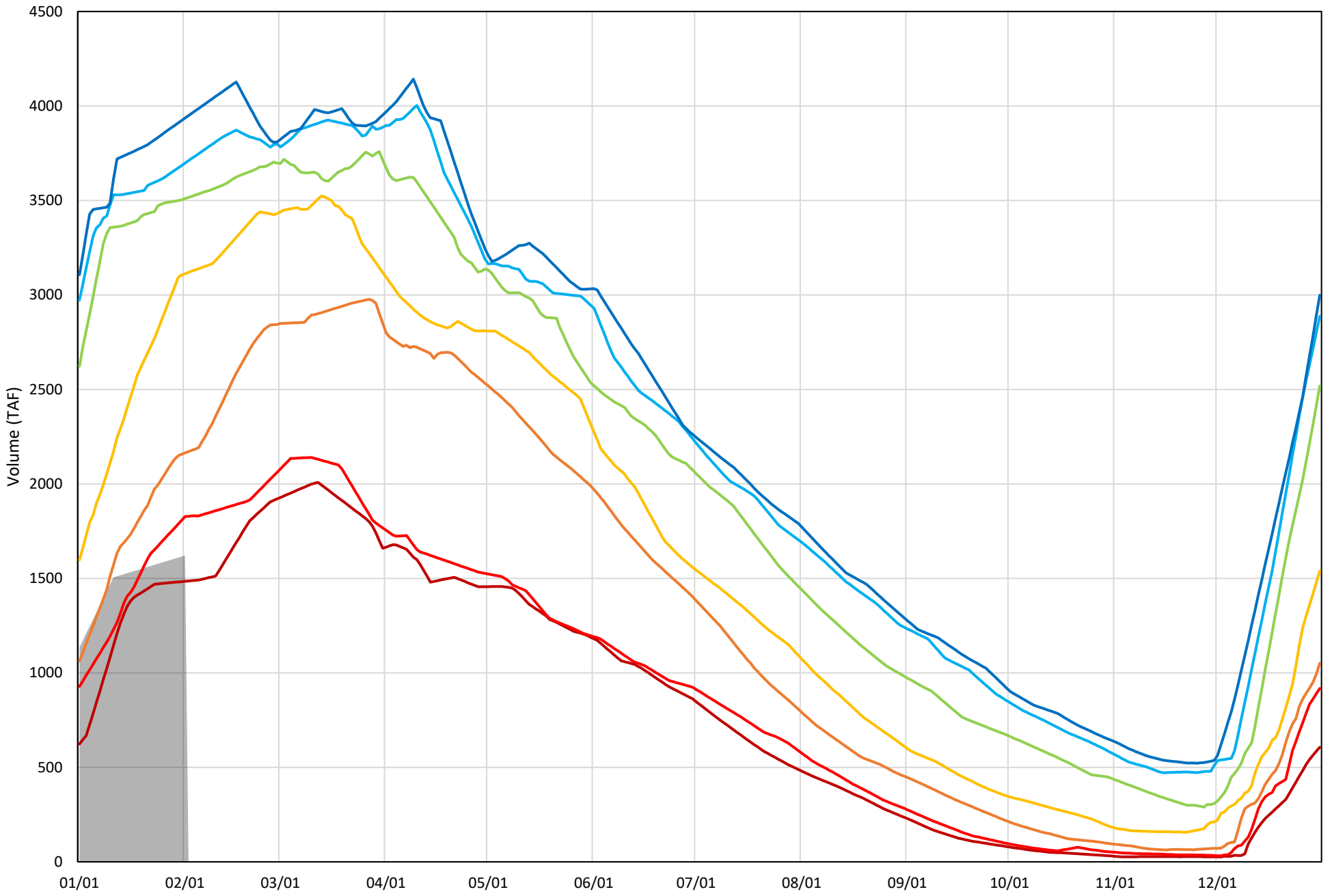
# Shasta Lake Cold Water Pool Volume $\leq 48^{\circ}\text{F}$

Avg (1998-2021) 2014 2015 2016 2019 2022



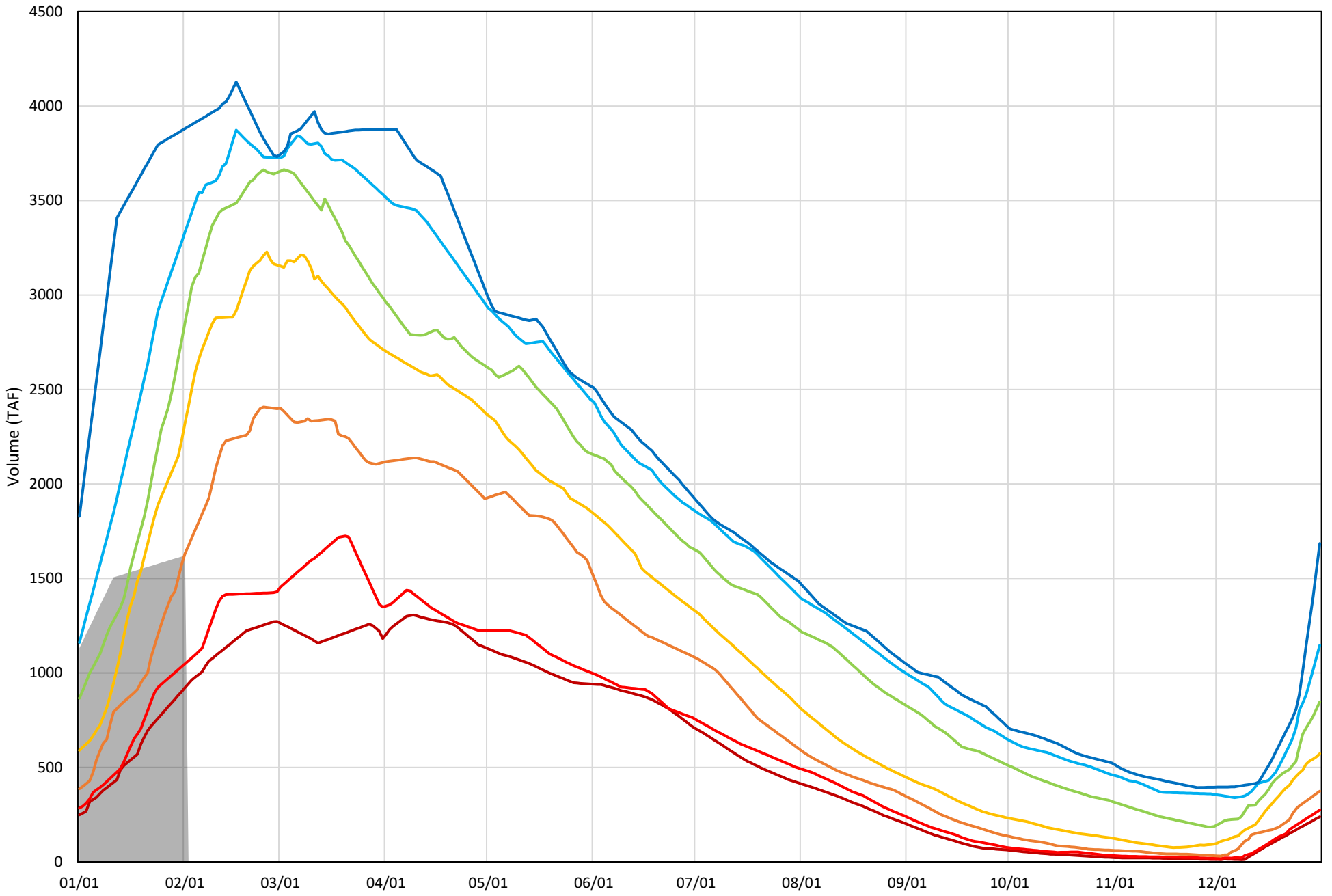
Shasta Lake Cold Water Pool Volume  $\leq 52^{\circ}\text{F}$  - Percent Exceedances (1998-2021)

2022 95 90 75 50 25 10 5



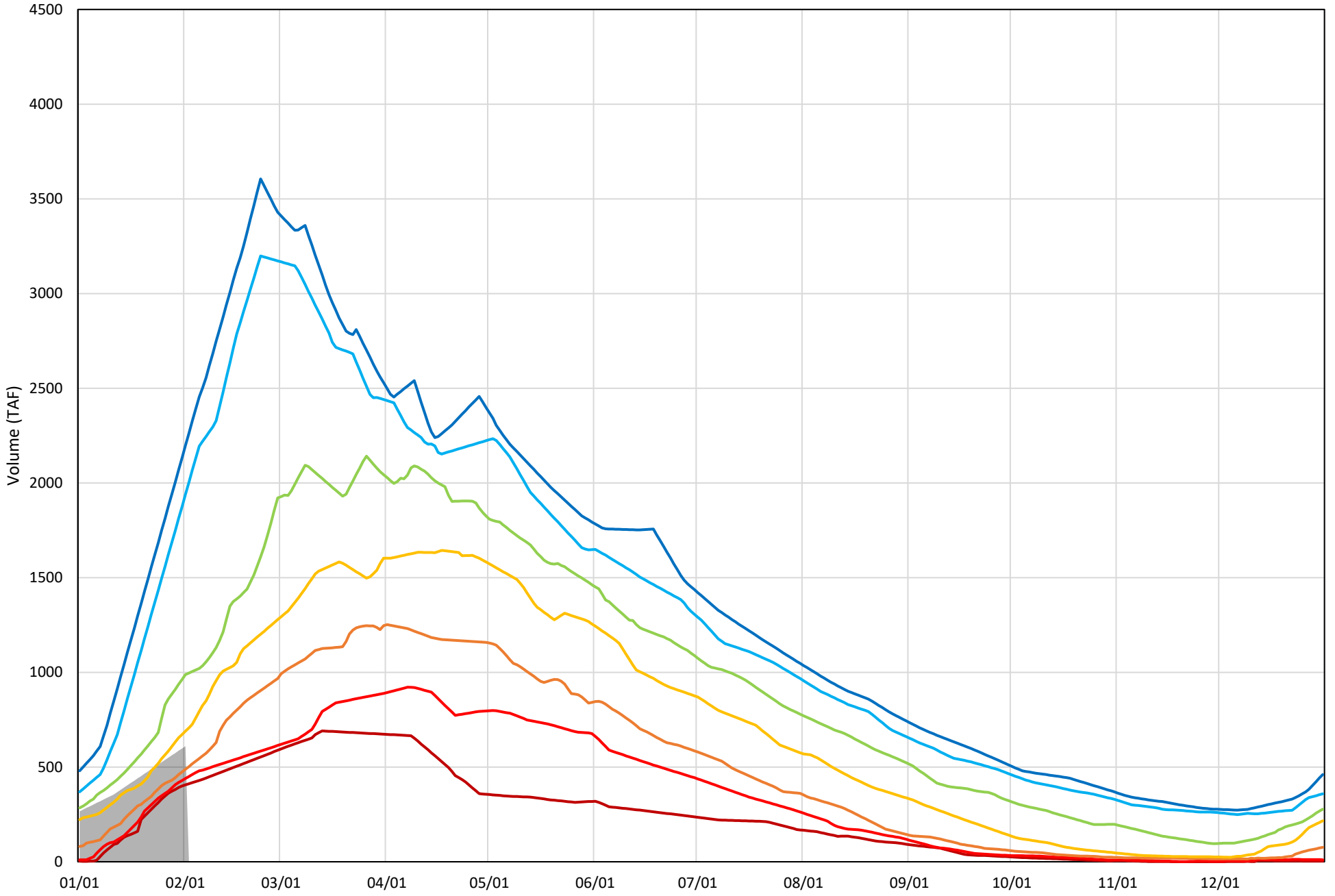
Shasta Lake Cold Water Pool Volume  $\leq 50^{\circ}\text{F}$  - Percent Exceedances (1998-2021)

2022 95 90 75 50 25 10 5



Shasta Lake Cold Water Pool Volume  $\leq 48^{\circ}\text{F}$  - Percent Exceedances (1998-2021)

2022 95 90 75 50 25 10 5



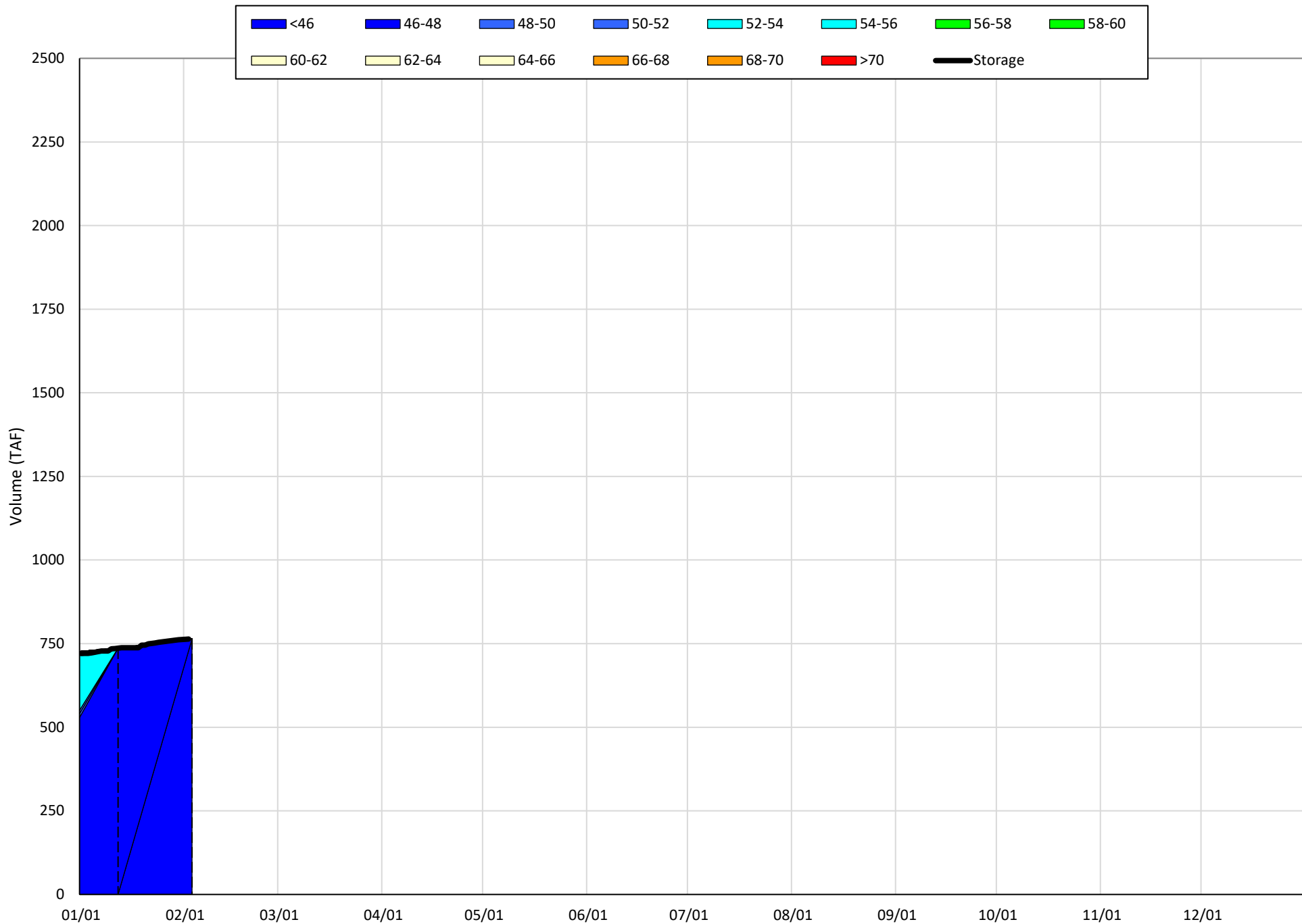


# Trinity Lake Isothermobaths & Cold Water Pool Statistics

## 2022

Page	Description
15	- Trinity Lake Isothermobaths Plot
16	- Trinity Lake Cold Water Pool Volume $\leq 52^{\circ}\text{F}$
17	- Trinity Lake Cold Water Pool Volume $\leq 50^{\circ}\text{F}$
18	- Trinity Lake Cold Water Pool Volume $\leq 48^{\circ}\text{F}$
19	- Trinity Lake Cold Water Pool Volume $\leq 52^{\circ}\text{F}$ - Percent Exceedances
20	- Trinity Lake Cold Water Pool Volume $\leq 50^{\circ}\text{F}$ - Percent Exceedances
21	- Trinity Lake Cold Water Pool Volume $\leq 48^{\circ}\text{F}$ - Percent Exceedances
22	- Trinity Lake Cold Water Pool Comparison by Year

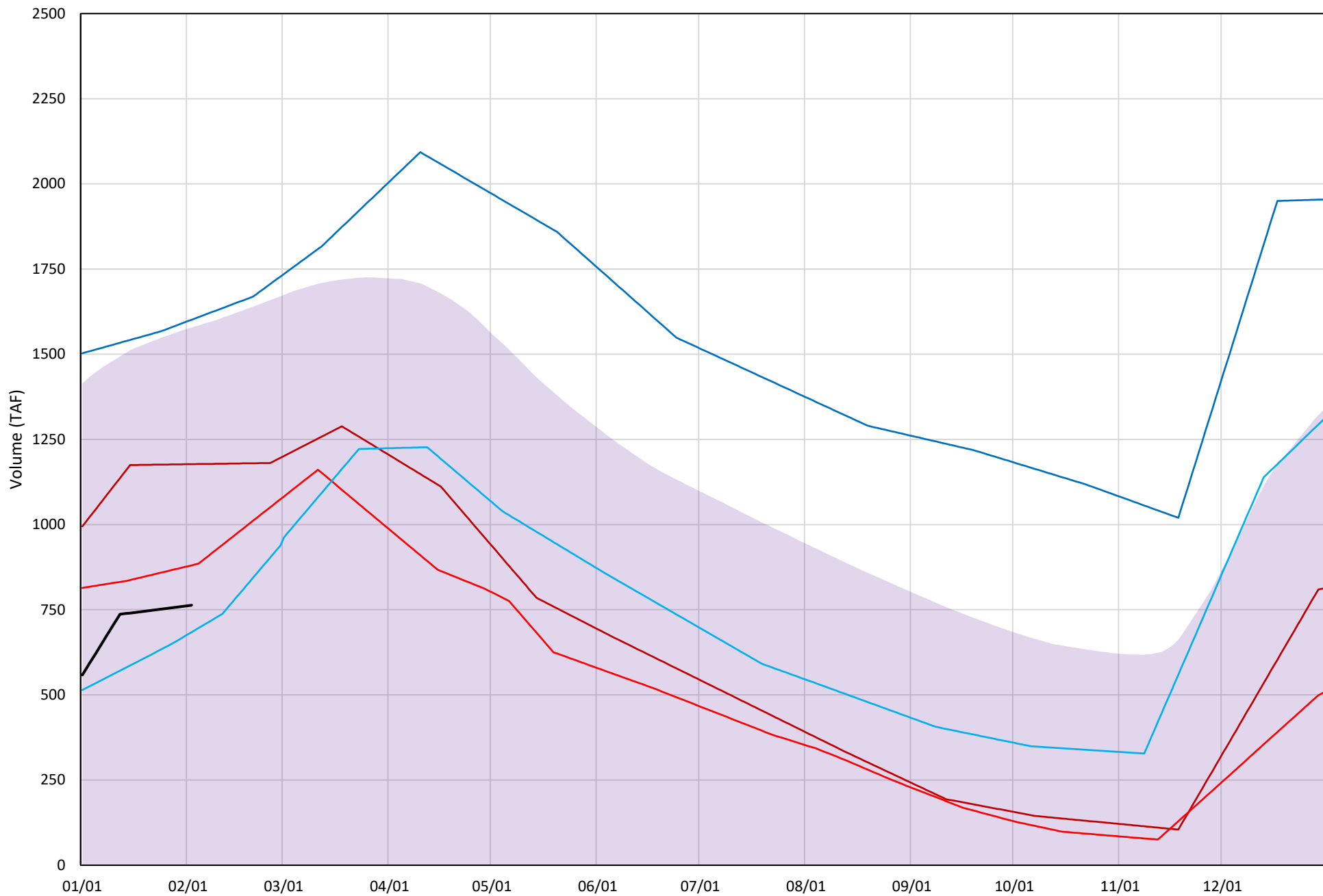
Trinity Lake Isothermobaths Plot - 2022





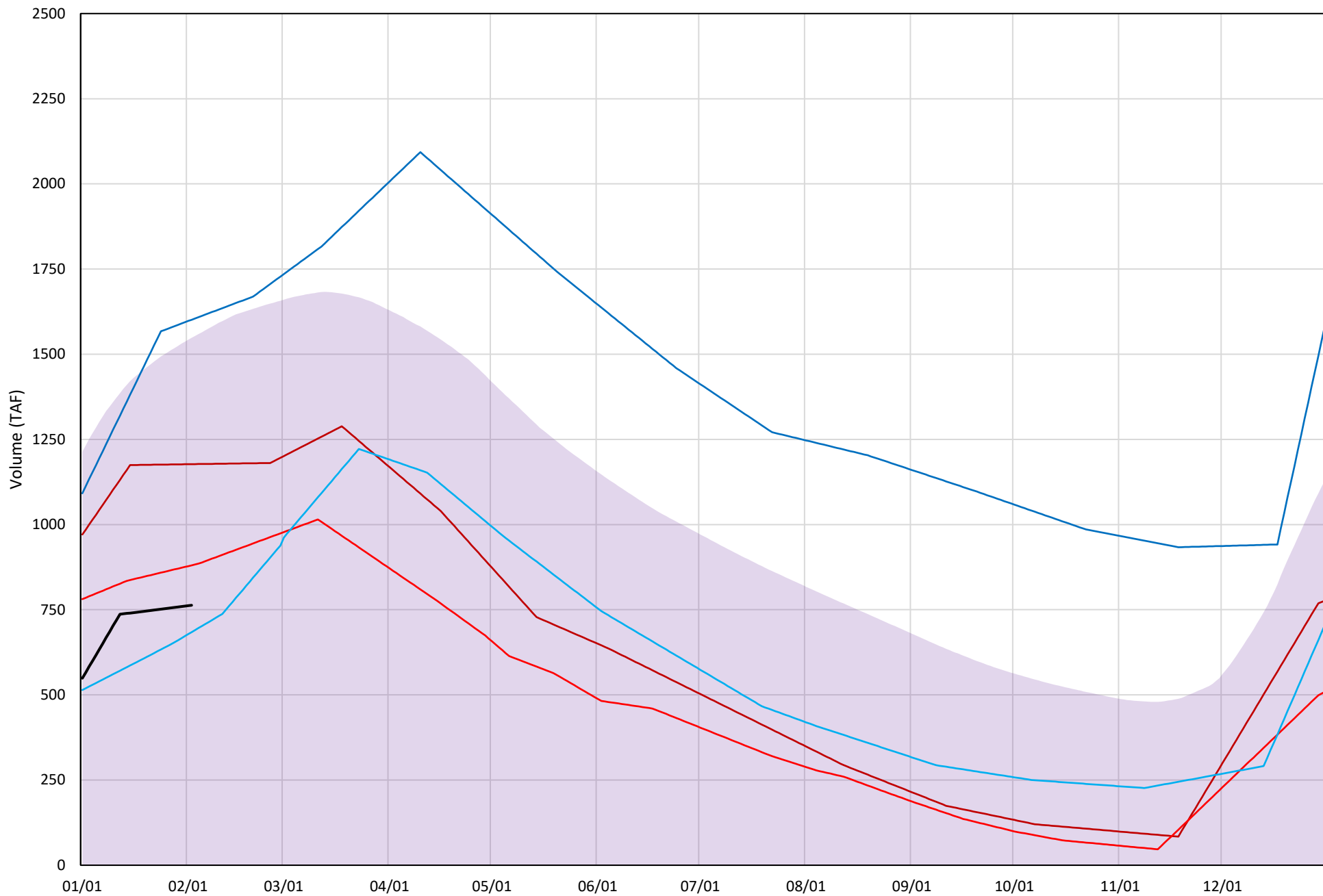
# Trinity Lake Cold Water Pool Volume $\leq 52^{\circ}\text{F}$

Avg (2000-2021) 2014 2015 2016 2019 2022



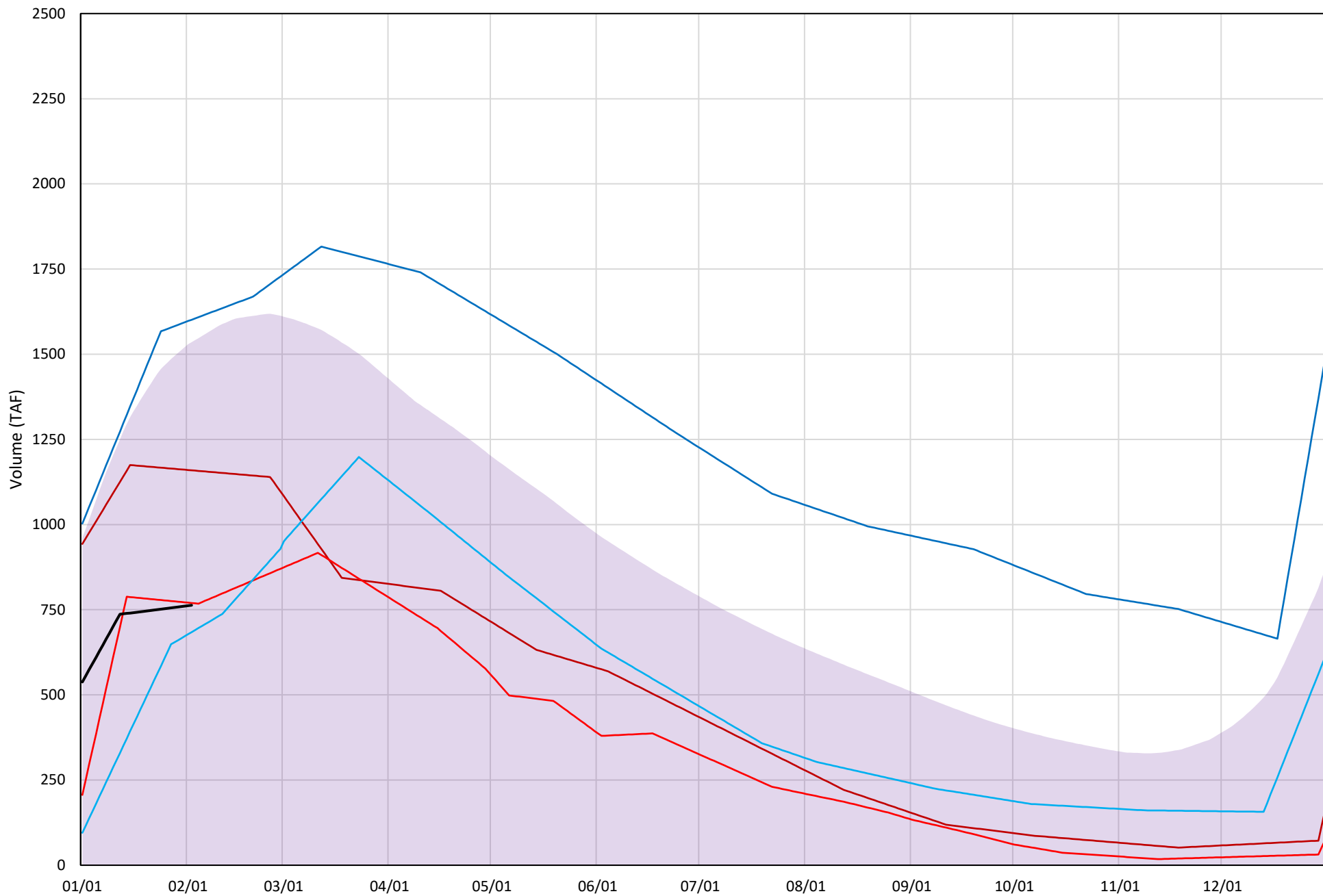
# Trinity Lake Cold Water Pool Volume ≤50°F

Avg (2000-2021) 2014 2015 2016 2019 2022

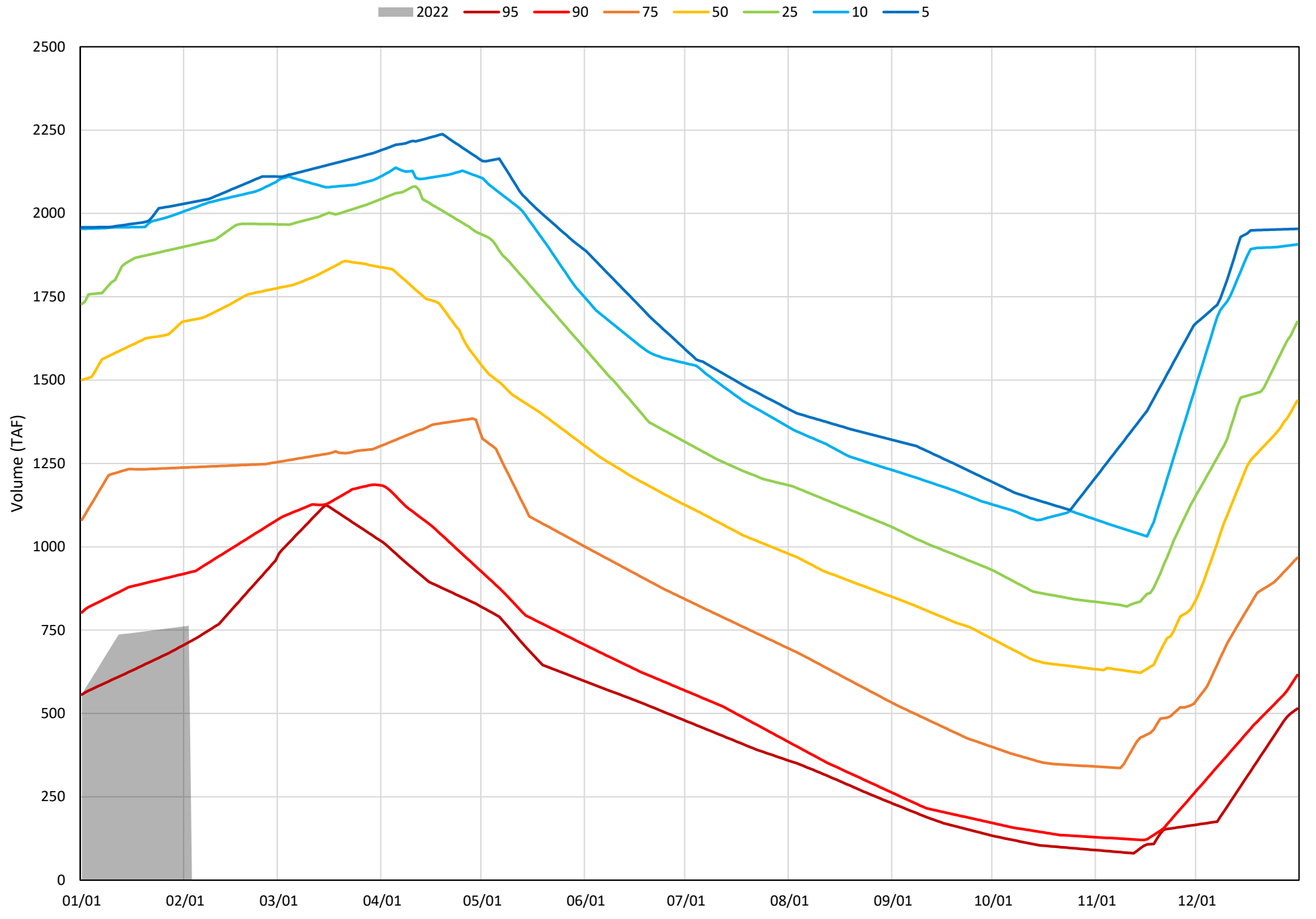


# Trinity Lake Cold Water Pool Volume $\leq 48^{\circ}\text{F}$

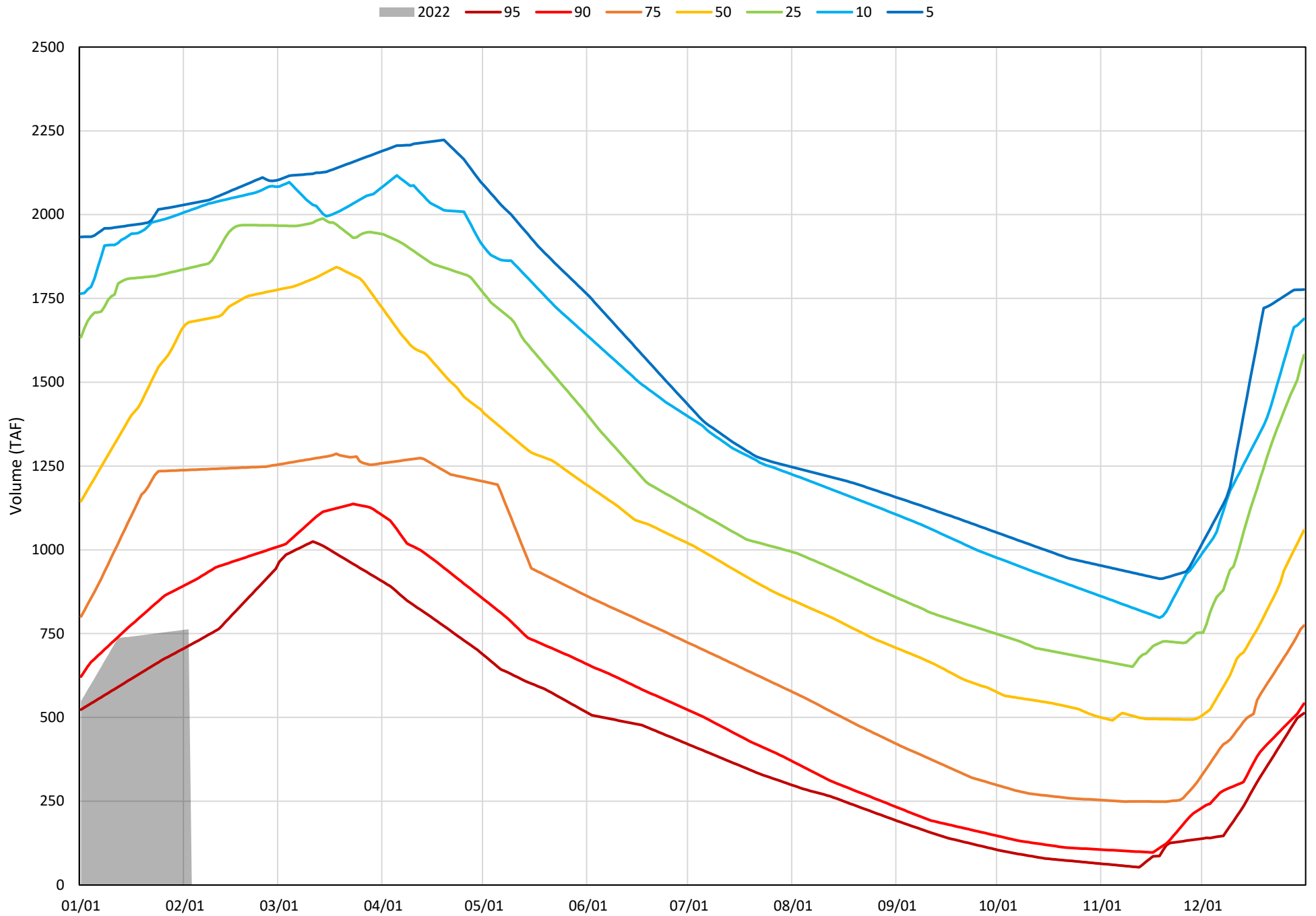
Avg (2000-2021) 2014 2015 2016 2019 2022



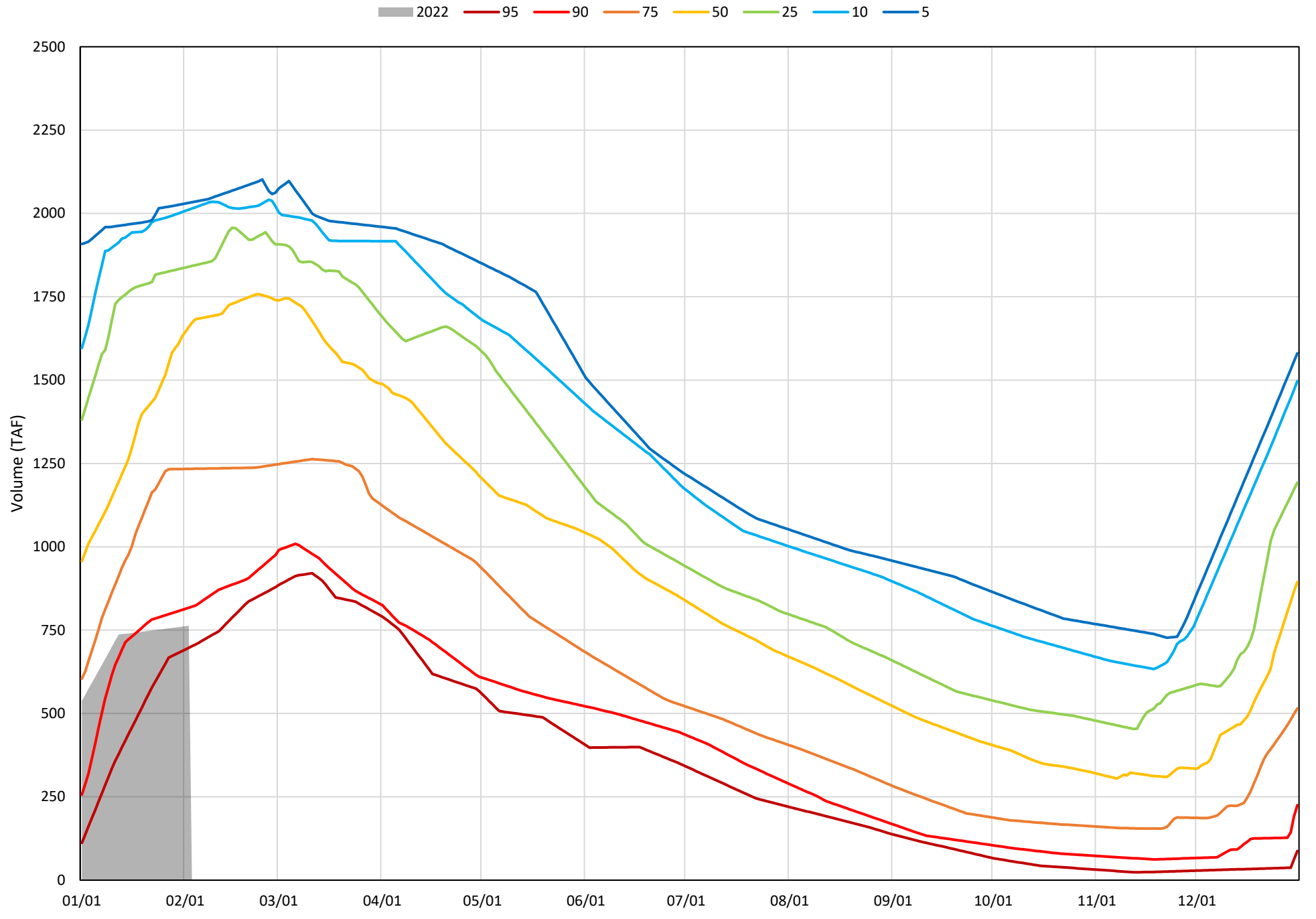
Trinity Lake Cold Water Pool Volume ≤52°F - Percent Exceedances (2000-2021)



Trinity Lake Cold Water Pool Volume  $\leq 50^{\circ}\text{F}$  - Percent Exceedances (2000-2021)



Trinity Lake Cold Water Pool Volume  $\leq 48^{\circ}\text{F}$  - Percent Exceedances (2000-2021)





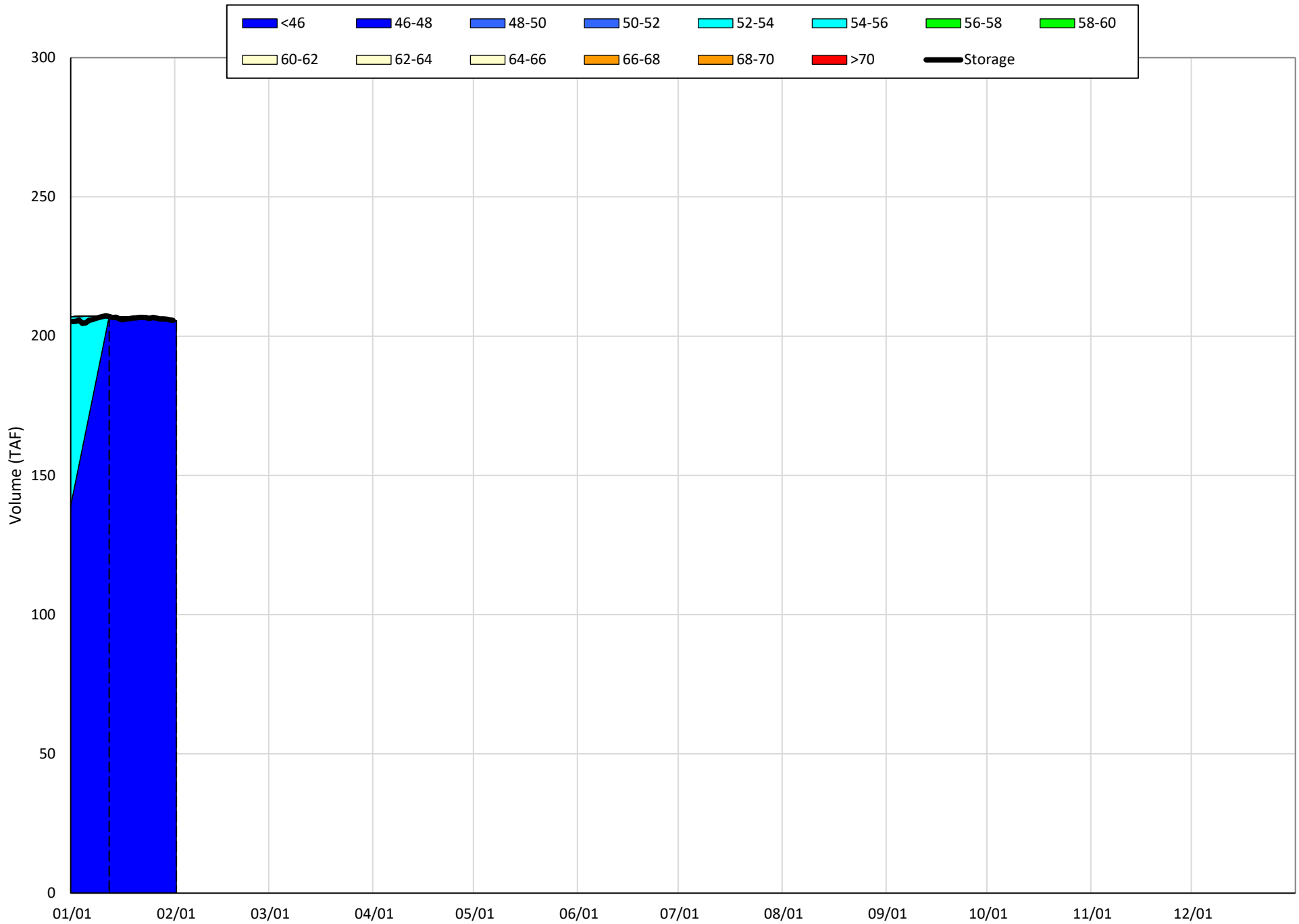
# Whiskeytown Lake Isothermobaths & Cold Water Pool Statistics

## 2022

Page	Description
24	- Whiskeytown Lake Isothermobaths Plot
25	- Whiskeytown Lake Cold Water Pool Volume $\leq 60^{\circ}\text{F}$
26	- Whiskeytown Lake Cold Water Pool Volume $\leq 58^{\circ}\text{F}$
27	- Whiskeytown Lake Cold Water Pool Volume $\leq 56^{\circ}\text{F}$
28	- Whiskeytown Lake Cold Water Pool Volume $\leq 60^{\circ}\text{F}$ - Percent Exceedances
29	- Whiskeytown Lake Cold Water Pool Volume $\leq 58^{\circ}\text{F}$ - Percent Exceedances
30	- Whiskeytown Lake Cold Water Pool Volume $\leq 56^{\circ}\text{F}$ - Percent Exceedances
31	- Whiskeytown Lake Cold Water Pool Comparison by Year

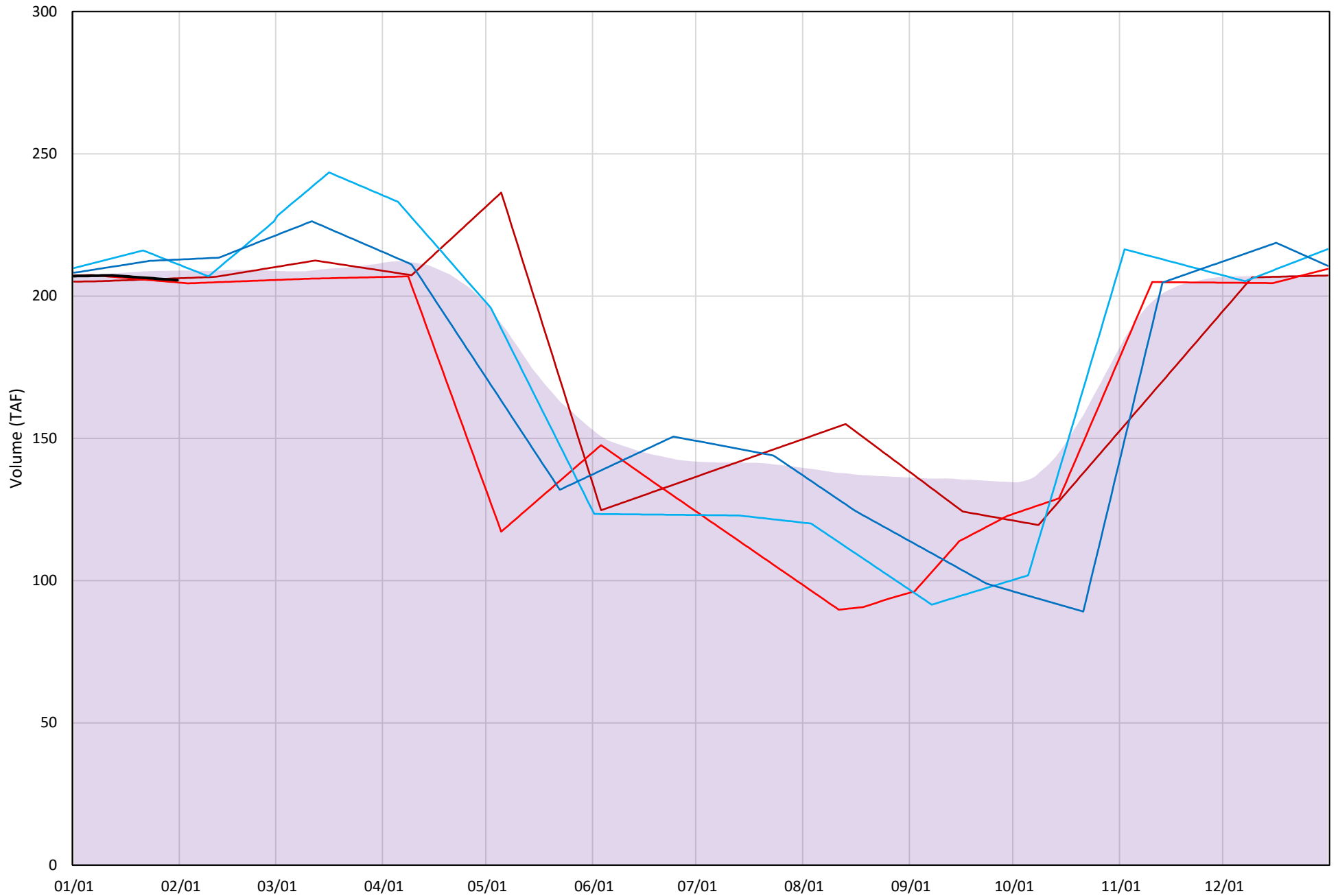


# Whiskeytown Lake Isothermobaths Plot - 2022



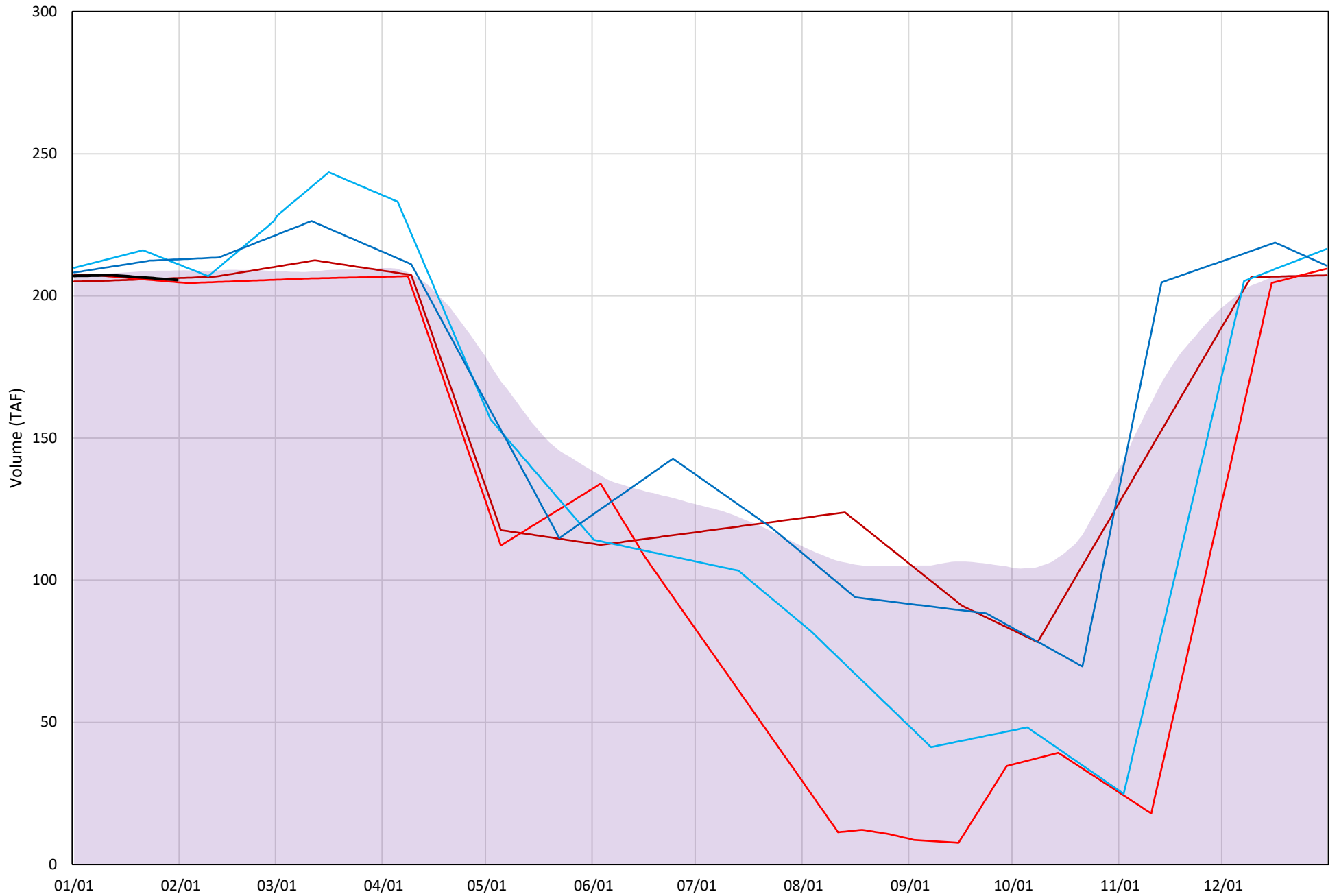
# Whiskeytown Lake Cold Water Pool Volume $\leq 60^{\circ}\text{F}$

Avg (2000-2021) 2014 2015 2016 2019 2022



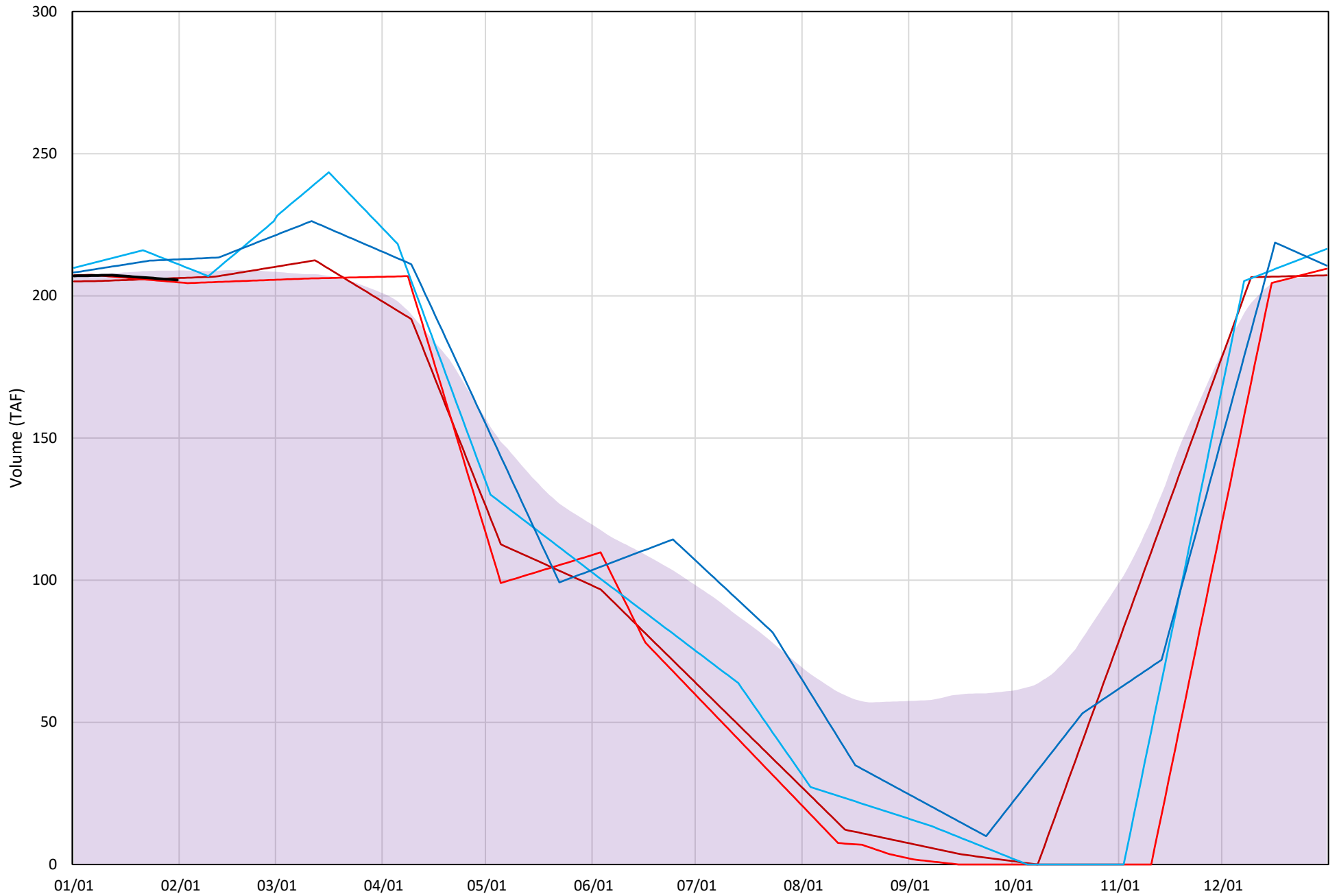
# Whiskeytown Lake Cold Water Pool Volume $\leq 58^{\circ}\text{F}$

Avg (2000-2021) 2014 2015 2016 2019 2022



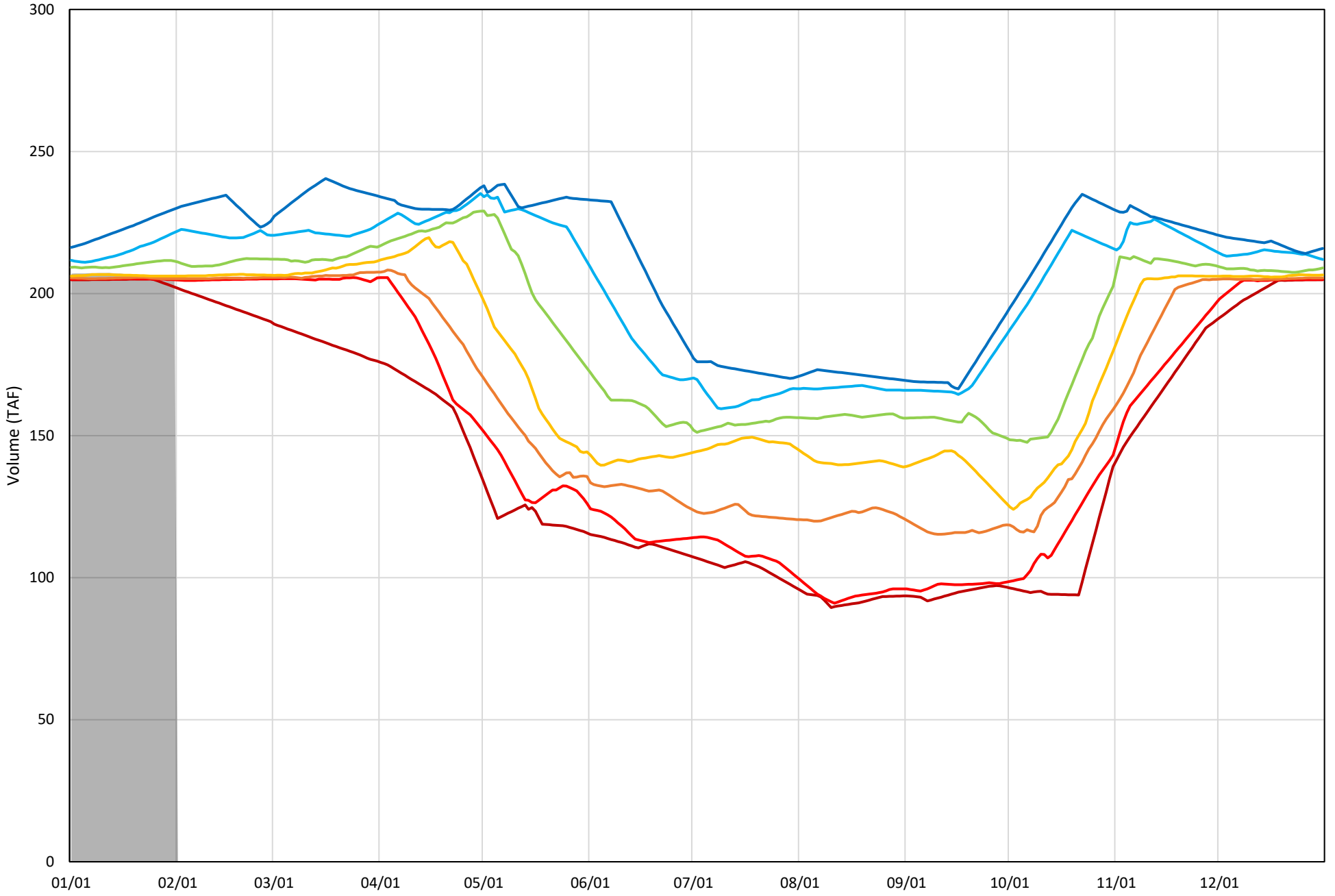
# Whiskeytown Lake Cold Water Pool Volume $\leq 56^{\circ}\text{F}$

Avg (2000-2021) 2014 2015 2016 2019 2022



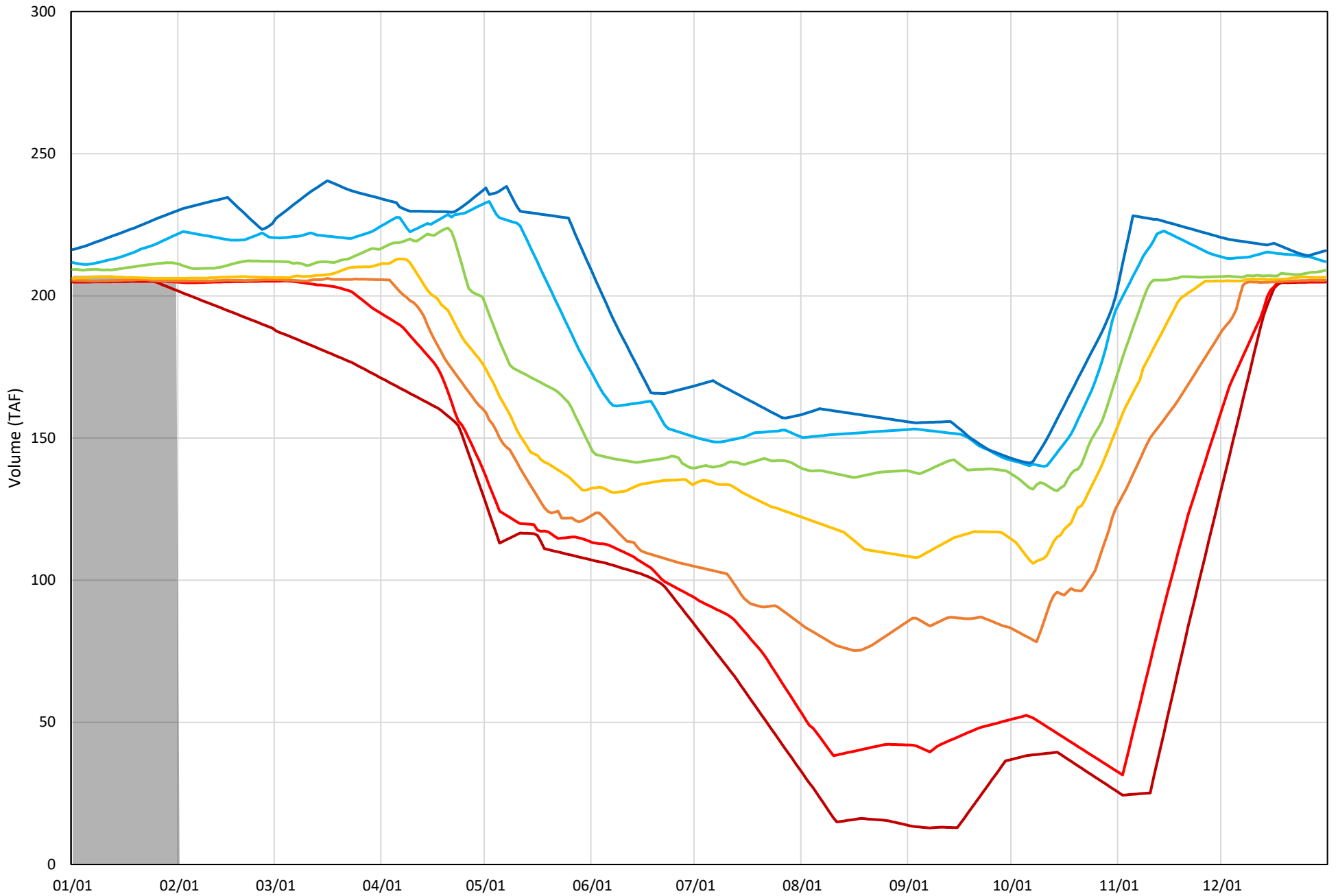
Whiskeytown Lake Cold Water Pool Volume  $\leq 60^{\circ}\text{F}$  - Percent Exceedances (2000-2021)

2022 95 90 75 50 25 10 5



Whiskeytown Lake Cold Water Pool Volume  $\leq 58^{\circ}\text{F}$  - Percent Exceedances (2000-2021)

2022 95 90 75 50 25 10 5



Whiskeytown Lake Cold Water Pool Volume  $\leq 56^{\circ}\text{F}$  - Percent Exceedances (2000-2021)

2022 95 90 75 50 25 10 5

