



— BUREAU OF —  
RECLAMATION

## Sacramento River Temperature Task Group

January 30, 2020

### Update

- Hydrology & Operations update (information is available on web-pages)
  - Daily Operation
  - Summary
  - 8-Station Index and Snow Water Content
  - Operations Outlook
  - Mean Daily Water Temperatures
  - Redding 10-Day Forecasted Air Temperatures
  - Sac River Gage temp plot and air temp plot
  - Lake Shasta Isothermobath Plot
  - Lake Shasta Current TCD Configuration
  - Trinity Lake Isothermobath Plot
  - Whiskeytown Lake Isothermobath Plot

**DAILY CVP WATER SUPPLY REPORT**

JANUARY 29, 2020

RUN DATE: January 30, 2020

RESERVOIR RELEASES IN CUBIC FEET/SECOND

RESERVOIR	DAM	WY 2019	WY 2020	15 YR MEDIAN
TRINITY	LEWISTON	306	294	304
SACRAMENTO	KESWICK	3,130	5,018	3,729
FEATHER	OROVILLE (SWP)	1,750	1,750	1,750
AMERICAN	NIMBUS	1,737	1,888	1,726
STANISLAUS	GOODWIN	234	803	234
SAN JOAQUIN	FRIANT	407	426	160

STORAGE IN MAJOR RESERVOIRS IN THOUSANDS OF ACRE-FEET

RESERVOIR	CAPACITY	15 YR AVG	WY 2019	WY 2020	% OF 15 YR AVG
TRINITY	2,448	1,497	1,582	1,993	133
SHASTA	4,552	2,820	2,893	3,460	123
FOLSOM	977	413	514	486	118
NEW MELONES	2,420	1,456	1,866	1,984	136
FED. SAN LUIS	966	648	804	564	87
TOTAL NORTH CVP	11,363	6,834	7,659	8,487	124
MILLERTON	520	285	315	316	111
OROVILLE (SWP)	3,538	1,916	1,390	2,195	115

ACCUMULATED INFLOW FOR WATER YEAR TO DATE IN THOUSANDS OF ACRE-FEET

RESERVOIR	CURRENT WY 2020	WY 1977	WY 1983	15 YR AVG	% OF 15 YR AVG
TRINITY	135	41	467	257	52
SHASTA	1,250	914	2,478	1,564	80
FOLSOM	409	138	1,526	649	63
NEW MELONES	211	----	542	232	91
MILLERTON	279	83	766	238	117

ACCUMULATED PRECIPITATION FOR WATER YEAR TO DATE IN INCHES

RESERVOIR	CURRENT WY 2020	WY 1977	WY 1983	AVG (N YRS)	% OF AVG	LAST 24 HRS
TRINITY AT FISH HATCHERY	11.36	4.40	25.45	18.00 ( 58)	63	0.00
SACRAMENTO AT SHASTA DAM	24.31	5.34	46.88	32.25 ( 63)	75	0.06
AMERICAN AT BLUE CANYON	24.48	7.78	51.03	33.98 ( 45)	72	0.01
STANISLAUS AT NEW MELONES	12.14	----	22.52	14.04 ( 42)	86	0.00
SAN JOAQUIN AT HUNTINGTON LK	12.99	5.10	41.20	20.23 ( 45)	64	0.00

## Upper Sacramento River Summary Conditions – January (On-going):

### Storage/Release Management Conditions:

- Reservoir Inflow Uncertainty: Shorter term forecasts (8-14 day) suggest a chance of below normal chance of precipitation
- Longer term forecasts (three-month outlook) suggest below normal precipitation
- Dry pattern persisting and January inflows falling below the 90% inflow exceedance probability estimates
- Current release from Keswick Dam: Ramping down from 5,000 cfs to 4,000 cfs beginning February 2<sup>nd</sup> through February 6<sup>th</sup> for storage conservation

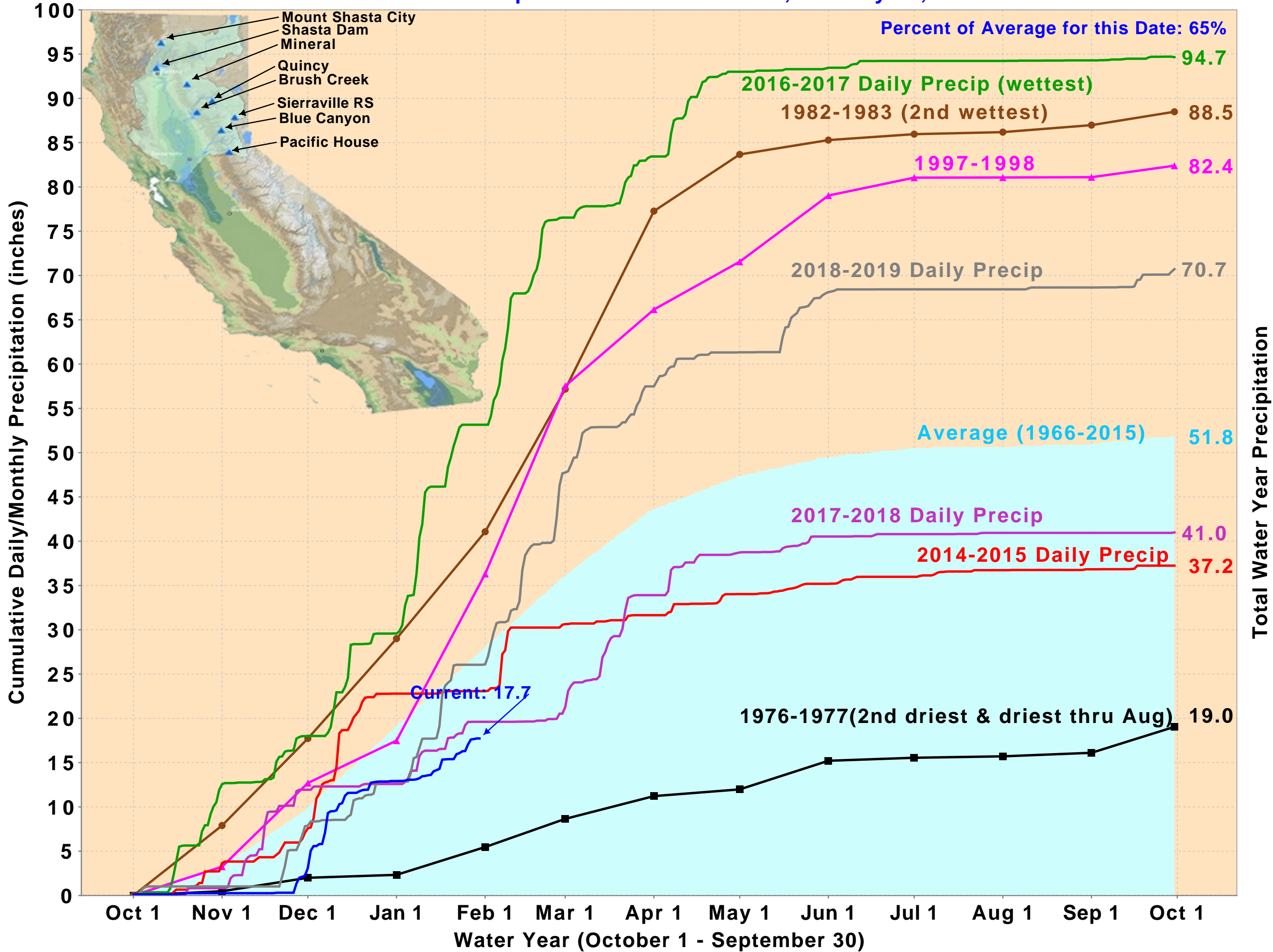
### Temperature Management:

- Temperature management: inactive
- Selective withdrawal: Rebuilding cold-water-pool reserves. All Upper and Middle gates open, when storage elevations are sufficient, the Middle gates will be closed.
- Meteorological Uncertainty: Shorter term forecasts (8-14 day) suggest below normal temperatures
- Longer term forecasts (three-month outlook) suggest above normal chances of warmer temperatures

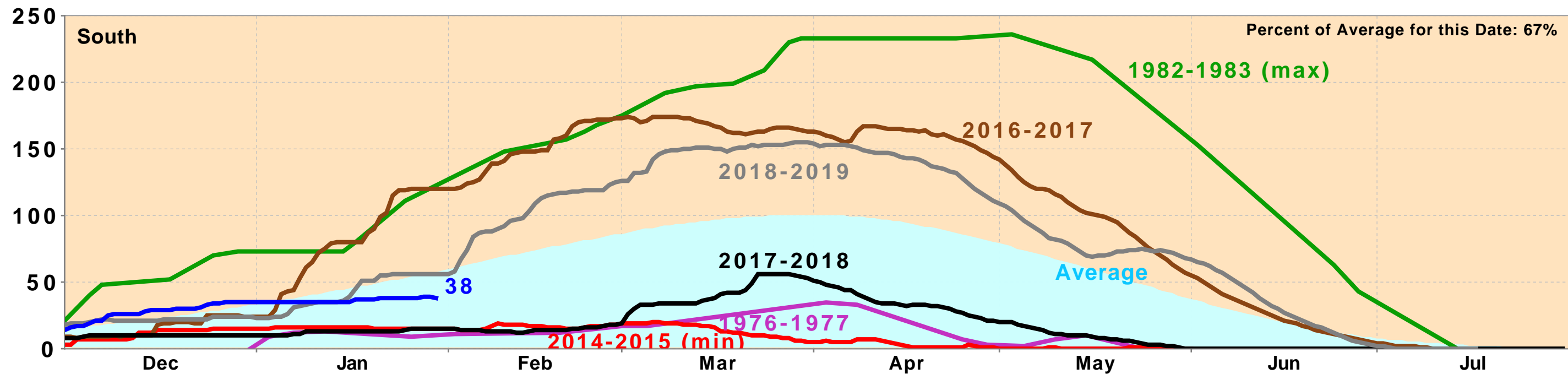
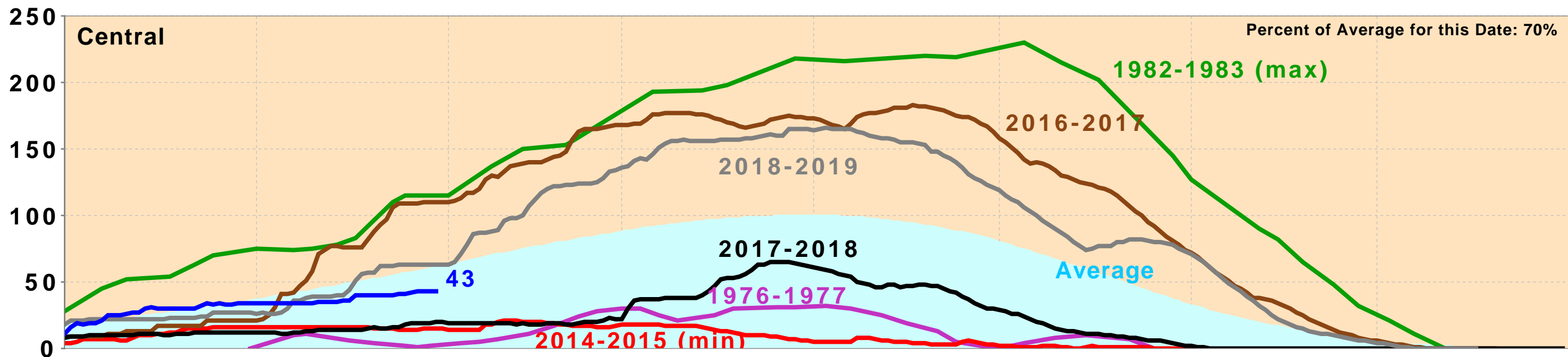
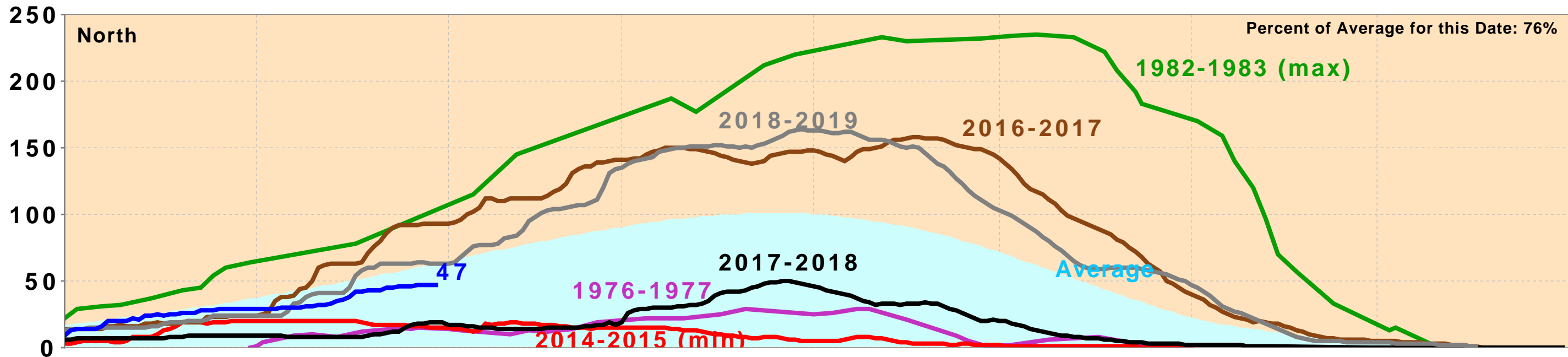
### Resources:

- Excellent link for short term precipitation forecasts, overlay with burn areas, debris flow potential, etc: <https://www.cnrfc.noaa.gov/>
- Comprehensive Upper Sacramento fishery information:  
<https://www.calfish.org/ProgramsData/ConservationandManagement/CentralValleyMonitoring/CDFWUpperSacRiverBasinSalmonidMonitoring.aspx>

# Northern Sierra Precipitation: 8-Station Index, January 30, 2020



# California Snow Water Content, January 30, 2020, Percent of April 1 Average



Statewide Percent of April 1: 43%

Statewide Percent of Average for Date: 72%

# CVP Northern System Operation Outlooks

DRAFT January 2020

## 90% Runoff Exceedance Outlook:

Inflow based on DWR B120 90%; Historical Inflows Oct and future months

### Federal End of the Month Storage/Elevation (TAF/Feet)

		Jan	Feb	Mar	Apr	May	Jun
Shasta	3330	3484	3743	4022	4024	3887	3468
	Elev.	1028	1038	1049	1049	1044	1027

### Monthly River Releases (cfs)

Sacramento	5000	4000	4000	6350	7450	11900
Clear Creek	200	200	200	218	216	288

### Trinity Diversions (TAF)

	Jan	Feb	Mar	Apr	May	Jun
Carr Power Plant	13	20	43	40	47	125
Spring Creek PP	10	20	50	10	40	110

## 50% Runoff Exceedance Outlook:

Inflow based on DWR B120 50%; Historical Inflows Oct and future months

### Federal End of the Month Storage/Elevation (TAF/Feet)

		Jan	Feb	Mar	Apr	May	Jun
Shasta	3330	3538	3770	3985	4128	4133	3902
	Elev.	1030	1039	1047	1052	1053	1044

### Monthly River Releases (cfs)

Sacramento	5000	10000	10000	7000	7000	10000
Clear Creek	240	200	200	218	216	288

### Trinity Diversions (TAF)

	Jan	Feb	Mar	Apr	May	Jun
Carr Power Plant	0	57	85	61	39	121
Spring Creek PP	19.8	90	110	40	40	110

Please note:

CVP actual operations do not follow any forecasted operation or outlook; actual operations are based on real-time conditions.

CVP operational forecasts or outlooks consider general system-wide dynamics and do not necessarily address specific watershed/tributary details.

CVP releases represent monthly averages.

CVP operations are updated monthly as new hydrology information is made available December through May.

**Estimated CVP Operations 90% Exceedance OMR -5000**

**Storages**

**Federal End of the Month Storage/Elevation (TAF/Feet)**

		Jan	Feb	Mar	Apr	May	Jun	Jul	Aug	Sep	Oct	Nov	Dec	
Trinity		1957	1966	2000	2045	2096	2103	1961	1816	1641	1482	1444	1420	1430
	Elev.	2339	2341	2344	2347	2348	2338	2328	2315	2302	2298	2296	2297	
Whiskeytown		207	206	206	206	238	238	238	238	238	206	206	206	
	Elev.	1199	1199	1199	1199	1209	1209	1209	1209	1209	1199	1199	1199	
Shasta		3330	3484	3743	4022	4024	3887	3468	2936	2535	2319	2209	2179	2264
	Elev.	1028	1038	1049	1049	1044	1027	1005	986	975	969	967	972	
Folsom		511	484	523	608	667	702	659	539	473	438	381	331	301
	Elev.	415	419	429	436	440	435	421	413	408	400	392	387	
New Melones		1981	1964	1976	1999	1964	1908	1833	1748	1676	1634	1589	1601	1614
	Elev.	1049	1049	1050	1052	1049	1044	1037	1029	1021	1017	1013	1014	1015
San Luis		398	560	628	620	511	340	162	79	50	105	212	320	436
	Elev.	499	507	504	487	463	434	411	394	406	420	441	467	
<b>Total</b>		8663	9075	9500	9499	9178	8321	7355	6613	6216	6041	6057	6251	

**Monthly River Releases (TAF/cfs)**

		Jan	Feb	Mar	Apr	May	Jun	Jul	Aug	Sep	Oct	Nov	Dec
Trinity	TAF	18	17	18	36	92	47	28	53	52	23	18	18
	cfs	300	300	300	600	1,498	783	450	857	870	373	300	300
Clear Creek	TAF	12	11	12	13	13	17	9	9	9	12	12	12
	cfs	200	200	200	218	216	288	150	150	150	200	200	200
Sacramento	TAF	307	222	246	378	458	708	768	615	416	369	297	246
	cfs	5000	4000	4000	6350	7450	11900	12500	10000	7000	6000	5000	4000
American	TAF	129	97	108	107	108	110	168	118	89	93	90	92
	cfs	2100	1750	1750	1798	1755	1850	2738	1917	1493	1506	1506	1500
Stanislaus	TAF	55	28	12	45	39	12	12	12	12	48	12	12
	cfs	900	500	200	762	631	200	200	200	200	774	200	200

**Trinity Diversions (TAF)**

	Jan	Feb	Mar	Apr	May	Jun	Jul	Aug	Sep	Oct	Nov	Dec
Carr PP	13	20	43	40	47	125	120	121	100	23	26	12
Spring Crk. PP	10	20	50	10	40	110	110	110	90	45	20	12

**Delta Summary (TAF)**

	Jan	Feb	Mar	Apr	May	Jun	Jul	Aug	Sep	Oct	Nov	Dec
Tracy	255	200	120	48	49	121	258	261	260	266	192	180
USBR Banks	0	0	0	0	0	0	9	9	9	0	0	0
Contra Costa	14.0	14.0	12.7	12.7	12.7	9.8	11.1	12.7	14.0	16.8	18.4	18.3
<b>Total USBR</b>	269	214	133	60	62	131	278	283	283	283	210	198
COA Balance	21	21	-36	-38	-41	0	5	-6	61	49	31	30
Vernalis	118	98	92	105	119	97	103	104	92	95	77	75
Vernalis	1925	1761	1501	1762	1931	1629	1680	1697	1545	1539	1293	1225
Old/Middle River Std.												
Old/Middle R. calc.	-4,847	-4,665	-2,954	-1,117	-1,035	-2,327	-3,931	-3,919	-5,525	-4,843	-4,557	-5,166
Computed DOI	12282	11671	11403	9531	7597	7598	4994	4002	3009	4002	4505	4506
Excess Outflow	6279	270	0	0	0	0	0	0	0	0	0	0
% Export/Inflow	36%	35%	25%	12%	14%	22%	36%	39%	55%	52%	51%	58%
% Export/Inflow std.	65%	45%	35%	35%	35%	35%	65%	65%	65%	65%	65%	65%

**Hydrology**

Water Year Inflow (TAF)	Trinity	Shasta	Folsom	New Melones
Year to Date + Forecasted	642.7	3,515	1,430	684
% of mean	53%	63%	53%	65%

CVP actual operations do not follow any forecasted operation or outlook; actual operations are based on real-time conditions.  
 CVP operational forecasts or outlooks represent general system-wide dynamics and do not necessarily address specific watershed/tributary details.  
 CVP releases or export values represent monthly averages.  
 CVP Operations are updated monthly as new hydrology information is made available December through May.

**Estimated CVP Operations 50% Exceedance OMR -5000**

**Storages**

**Federal End of the Month Storage/Elevation (TAF/Feet)**

		Jan	Feb	Mar	Apr	May	Jun	Jul	Aug	Sep	Oct	Nov	Dec
Trinity		1957	2000	2144	2253	2190	2034	1873	1721	1583	1548	1535	1565
	Elev.	2341	2345	2351	2358	2354	2343	2332	2321	2310	2307	2306	2308
Whiskeytown		207	206	206	238	238	238	238	238	238	206	206	206
	Elev.	1199	1199	1199	1209	1209	1209	1209	1209	1209	1199	1199	1199
Shasta		3330	3538	3770	3985	4128	4133	3902	3465	3169	3011	2921	2940
	Elev.	1030	1039	1047	1052	1053	1044	1027	1015	1008	1004	1005	1010
Folsom		511	564	567	753	892	965	927	768	625	546	498	468
	Elev.	424	425	445	458	465	461	446	431	422	416	412	411
New Melones		1981	1987	1975	2039	2038	2081	2107	2052	1993	1957	1926	1942
	Elev.	1051	1050	1056	1056	1060	1062	1057	1052	1048	1045	1047	1049
San Luis		398	576	693	795	762	651	459	224	71	84	184	355
	Elev.	500	518	529	521	499	453	424	408	416	432	458	483
<b>Total</b>		8871	9276	9922	10311	10259	9667	8619	7817	7420	7282	7446	7798

**Monthly River Releases (TAF/cfs)**

Trinity	TAF	18	17	18	28	258	126	68	53	52	23	18	18
	cfs	300	300	300	477	4,189	2,120	1,102	857	870	373	300	300
Clear Creek	TAF	15	11	12	13	13	17	9	9	9	12	12	12
	cfs	240	200	200	218	216	288	150	150	150	200	200	200
Sacramento	TAF	307	555	615	416	430	595	707	553	416	369	297	277
	cfs	5000	10000	10000	7000	7000	10000	11500	9000	7000	6000	5000	4500
American	TAF	138	255	166	178	249	189	248	222	156	123	119	123
	cfs	2250	4600	2700	3000	4050	3171	4029	3612	2622	2000	2002	2000
Stanislaus	TAF	61	78	31	45	39	12	12	12	12	39	12	12
	cfs	1000	1400	500	762	631	200	200	200	200	635	200	200

**Trinity Diversions (TAF)**

	Jan	Feb	Mar	Apr	May	Jun	Jul	Aug	Sep	Oct	Nov	Dec
Carr PP	-1	57	85	61	39	121	99	100	99	23	25	9
Spring Crk. PP	19.8	90	110	40	40	110	90	90	90	45	20	12

**Delta Summary (TAF)**

	Jan	Feb	Mar	Apr	May	Jun	Jul	Aug	Sep	Oct	Nov	Dec	
Tracy	260	235	260	180	209	250	271	270	265	260	255	260	
USBR Banks	0	0	0	0	0	0	26	26	26	0	0	0	
Contra Costa	14.0	14.0	12.7	12.7	12.7	9.8	11.1	12.7	14.0	16.8	18.4	18.3	
<b>Total USBR</b>	274	249	273	193	222	260	308	309	305	277	273	278	
COA Balance	21	21	21	21	21	13	16	25	133	209	232	232	
Vernalis	166	302	268	206	242	86	77	68	71	117	99	103	
Vernalis	2708	5434	4355	3463	3932	1444	1257	1111	1192	1904	1662	1680	
Old/Middle River Std.													
Old/Middle R. calc.	cfs	-4,995	-4,995	-4,927	-3,252	-3,665	-4,597	-8,643	-8,854	-8,545	-7,058	-7,315	-6,577
Computed DOI	17666	36255	28582	15717	11550	7699	6507	4880	3009	4002	4505	9581	
Excess Outflow	11664	24854	17178	4320	2505	0	0	0	0	0	0	5075	
% Export/Inflow	29%	19%	22%	24%	32%	35%	50%	56%	65%	62%	63%	47%	
% Export/Inflow std.	65%	45%	35%	35%	35%	35%	65%	65%	65%	65%	65%	65%	

**Hydrology**

Water Year Inflow (TAF)	Trinity	Shasta	Folsom	New Melones
Year to Date + Forecasted	1054	4,561	2,311	1061
% of mean	87%	82%	85%	100%

CVP actual operations do not follow any forecasted operation or outlook; actual operations are based on real-time conditions.

CVP operational forecasts or outlooks represent general system-wide dynamics and do not necessarily address specific watershed/tributary details.

CVP releases or export values represent monthly averages.

CVP Operations are updated monthly as new hydrology information is made available December through May.



# Northern CVP Water Temperature Report

## January - 2020

Page	Description
1	- Mean Daily Water Temperature, Release Flow Rates and Air Temperatures with Monthly Averages
2	- Redding 10-Day Forecasted Air Temperatures
3	- Sacramento River Mean Daily Water Temperature, Air Temperature and 10-Day Forecasted Air Temperature Plot - Water Temperature Measuring Station Details - Temperature Control Point Details
4	- Shasta Lake Isothermobaths Plot
5	- Trinity Lake Isothermobaths Plot
6	- Whiskeytown Lake Isothermobaths Plot
x	- <a href="#">TCD Configuration</a> (External Link)



All Data in this Report is Preliminary and Subject to Change

DATE	Mean Daily Water Temperatures (°F)													Mean Daily Release (CFS)			Mean Daily Air Temperatures (°F)			
	TCD <sup>1</sup>	SHD	SPP <sup>1</sup>	KWK	SAC	CCR	BSF <sup>2</sup>	JLF	BND	RDB	IGO	LWS	-----	Shasta Generation	Spring Creek P.P.	Keswick Total	RDD	BSF	RDB	LWS
Dec	52.5	51.7	50.4	51.4	51.4	51.3	50.8	50.7	50.8	50.4	49.3	44.0	44.0	4672	342	5626	48.1	46.4	47.9	-
01/01	# -	51.5	48.8	51.1	51.1	51.0	51.0	51.0	51.2	50.9	48.4	43.7	44.1	4627	521	5402	48.0	48.3	48.7	-
01/02	# -	51.4	48.6	51.3	51.2	51.1	50.5	50.4	50.4	50.3	47.5	42.8	42.9	4853	362	5225	50.5	44.5	48.4	-
01/03	# -	51.4	49.6	51.2	51.1	51.0	50.5	50.2	50.3	49.9	47.4	42.8	42.2	4862	37	5102	46.5	43.5	46.7	-
01/04	# -	51.3	49.3	51.3	51.3	51.3	50.9	50.7	50.8	50.3	47.7	42.8	42.6	4748	37	5099	50.5	48.1	49.8	-
01/05	# -	51.1	48.0	51.3	51.2	51.1	50.7	50.5	50.7	50.4	47.2	42.6	42.6	4428	166	5097	46.0	43.3	46.4	-
01/06	# -	51.2	48.5	51.1	51.0	50.8	50.3	49.9	49.9	49.6	46.8	42.5	42.0	4568	228	5096	48.0	43.3	46.1	-
01/07	# -	51.0	48.2	50.7	50.7	50.3	49.8	49.5	49.6	49.2	46.6	42.8	41.4	3924	610	5065	42.0	40.9	42.0	-
01/08	# -	50.7	47.9	50.5	50.5	50.1	50.0	49.9	50.0	49.4	47.3	43.5	42.7	3917	661	5046	44.0	43.9	44.2	-
01/09	# -	50.6	48.9	50.5	50.5	50.3	50.1	50.1	50.2	49.8	47.1	43.4	43.0	4557	37	5047	47.5	46.5	48.2	-
01/10	# -	50.6	48.4	50.4	50.4	50.0	49.3	49.1	49.2	49.1	46.7	43.9	43.0	4456	37	5045	42.5	41.5	43.5	-
01/11	# -	50.4	48.6	50.4	50.5	50.3	50.0	49.8	49.9	49.3	47.1	43.2	43.5	4442	59	5045	47.5	47.5	47.3	-
01/12	# -	50.4	48.6	50.4	50.3	49.8	49.4	49.2	49.4	49.2	46.7	42.7	42.3	4446	37	5002	41.5	42.4	43.1	-
01/13	# -	50.2	48.2	50.2	50.2	49.8	49.3	49.1	49.2	48.6	46.8	42.7	42.2	4598	51	4999	45.0	47.3	47.2	-
01/14	# -	50.1	48.4	50.1	50.1	49.8	49.3	49.2	49.3	48.9	46.6	42.8	42.3	4703	37	4992	46.5	47.4	48.0	-
01/15	# -	50.2	48.4	49.7	49.7	49.2	48.9	48.8	49.0	48.5	46.2	42.7	41.9	5283	37	4992	42.0	41.2	41.5	-
01/16	# -	50.0	48.4	49.6	49.4	48.9	47.9	48.1	48.4	48.0	46.2	41.9	40.8	4766	37	4998	45.0	45.8	46.0	-
01/17	# -	49.9	47.9	49.6	49.4	49.0	47.2	46.9	47.0	46.8	46.5	42.1	40.9	4595	64	5001	42.0	42.7	43.5	-
01/18	# -	50.0	47.7	49.5	49.5	49.2	48.3	48.0	48.0	47.3	46.3	42.6	41.5	4494	72	5004	42.5	42.0	44.4	-
01/19	# -	50.0	48.1	49.5	49.5	49.1	48.4	48.3	48.4	47.9	46.7	42.8	41.9	4848	37	5000	43.5	42.5	44.5	-
01/20	# -	49.9	48.1	49.6	49.6	49.2	48.8	48.6	48.7	48.1	46.8	43.0	42.5	4886	37	4994	46.0	45.0	45.3	-
01/21	# -	49.8	47.1	49.6	49.4	49.3	49.1	49.1	49.3	48.7	46.5	43.0	42.8	4577	212	4986	46.5	48.2	48.9	-
01/22	# -	49.8	47.1	49.6	49.6	49.6	49.0	49.2	49.5	49.3	47.1	43.6	43.4	4671	147	4995	49.0	49.5	50.9	-
01/23	# -	49.7	47.8	49.5	49.5	49.3	49.0	49.1	49.4	49.2	46.9	44.3	44.5	4297	37	5002	45.5	45.6	47.2	-
01/24	# -	49.7	47.7	49.6	49.8	49.7	49.7	49.8	50.0	49.5	47.6	44.5	45.1	4576	37	4998	51.0	49.6	50.0	-
01/25	# -	49.7	46.8	49.7	49.8	49.7	50.1	50.4	50.7	50.4	47.6	44.6	45.1	4214	187	4999	52.0	50.7	52.0	-
01/26	# -	49.8	46.6	49.7	50.0	50.2	51.2	51.4	51.7	51.5	48.2	44.2	44.2	4060	523	4992	58.0	55.1	56.3	-
01/27	# -	49.6	46.7	49.7	50.0	50.0	50.9	51.1	51.6	51.8	48.0	44.4	45.1	4355	366	4994	54.0	53.6	54.1	-
01/28	# -	49.4	46.6	49.6	49.9	49.9	50.9	51.2	51.5	51.3	48.1	44.7	45.8	4087	502	5000	50.5	51.7	52.0	-
01/29	# -	49.5	46.6	49.5	49.8	49.7	50.4	50.7	51.0	51.1	47.5	44.0	45.1	3949	383	5018	54.5	51.9	53.2	-
01/30																				
01/31																				
Jan	-	50.3	48.0	50.2	50.2	50.0	49.7	49.6	49.8	49.4	47.1	43.2	43.0	4510	192	5043	47.2	46.3	47.6	-

Total CFS	130787	5558	146235
Total AF	259411	11024	290051

**Legend**

- ? = 1-9 hours of data missing (Average includes estimations)
- ! = 10 or more hours of data missing (Average not calculated)
- # = Station out of service
- ↑ = Record high air temperature
- ↓ = Record low air temperature
- ☐ = Monthly Averages

**Notes**

- <sup>1</sup> Temperatures are weighted averages based on individual penstock flow and temperature
- Highlighted cells in the TCD column indicate a TCD change was made on that day
- <sup>2</sup> Current control point (see page 3 for more details)
- <sup>3</sup> Column not used this month

DATE	Redding (RDD) Daily Air Temperatures (°F)																																				
	Actual			Forecasted																																	
	Previous Day			Current Day			1 Day			2 Days			3 Days			4 Days			5 Days			6 Days			7 Days			8 Days			9 Days			10 Days			
	↓	↑	Avg	↓	↑	Avg	↓	↑	Avg	↓	↑	Avg	↓	↑	Avg	↓	↑	Avg	↓	↑	Avg	↓	↑	Avg	↓	↑	Avg	↓	↑	Avg	↓	↑	Avg	↓	↑	Avg	
01/01	49	69	59.0	39	59	49.0	38	63	50.5	39	59	49.0	41	55	48.0	35	56	45.5	34	59	46.5	34	57	45.5	37	62	49.5	39	58	48.5	37	58	47.5	37	54	45.5	
01/02	39	57	48.0	34	62	48.0	38	60	49.0	40	56	48.0	34	56	45.0	34	61	47.5	35	57	46.0	34	54	44.0	41	58	49.5	39	56	47.5	43	55	49.0	39	54	46.5	
01/03	34	67	50.5	34	64	49.0	41	57	49.0	35	55	45.0	34	61	47.5	34	56	45.0	36	54	45.0	35	54	44.5	38	54	46.0	36	55	45.5	33	53	43.0	39	54	46.5	
01/04	34	59	46.5	44	57	50.5	35	54	44.5	34	61	47.5	35	55	45.0	37	54	45.5	34	55	44.5	33	51	42.0	39	53	46.0	38	54	46.0	36	54	45.0	36	52	44.0	
01/05	43	58	50.5	35	55	45.0	34	62	48.0	35	56	45.5	38	53	45.5	35	54	44.5	33	53	43.0	36	51	43.5	38	53	45.5	42	55	48.5	40	57	48.5	36	55	45.5	
01/06	35	57	46.0	33	62	47.5	35	57	46.0	38	53	45.5	36	54	45.0	34	54	44.0	37	53	45.0	33	50	41.5	40	52	46.0	34	52	43.0	28	51	39.5	30	55	42.5	
01/07	33	63	48.0	30	57	43.5	38	53	45.5	38	55	46.5	32	55	43.5	37	52	44.5	34	50	42.0	37	51	44.0	37	55	46.0	37	52	44.5	38	53	45.5	37	56	46.5	
01/08	30	54	42.0	42	50	46.0	39	53	46.0	32	53	42.5	37	52	44.5	33	51	42.0	36	51	43.5	33	50	41.5	33	53	43.0	34	50	42.0	34	53	43.5	39	57	48.0	
01/09	42	46	44.0	39	54	46.5	33	53	43.0	38	52	45.0	33	50	41.5	36	51	43.5	34	51	42.5	30	48	39.0	38	48	43.0	41	52	46.5	43	55	49.0	40	61	50.5	
01/10	37	58	47.5	37	53	45.0	38	52	45.0	33	49	41.0	36	50	43.0	36	51	43.5	33	49	41.0	35	49	42.0	38	50	44.0	34	49	41.5	33	53	43.0	34	57	45.5	
01/11	34	51	42.5	44	54	49.0	33	51	42.0	34	50	42.0	35	50	42.5	31	46	38.5	35	47	41.0	35	49	42.0	39	52	45.5	40	56	48.0	39	59	49.0	37	59	48.0	
01/12	40	55	47.5	33	50	41.5	35	51	43.0	35	50	42.5	34	48	41.0	36	47	41.5	31	47	39.0	34	51	42.5	35	57	46.0	38	54	46.0	39	55	47.0	37	58	47.5	
01/13	32	51	41.5	41	50	45.5	37	49	43.0	35	46	40.5	37	47	42.0	33	47	40.0	36	50	43.0	35	56	45.5	37	57	47.0	40	58	49.0	41	62	51.5	42	63	52.5	
01/14	40	50	45.0	38	49	43.5	34	47	40.5	37	46	41.5	34	47	40.5	35	48	41.5	38	56	47.0	38	56	47.0	42	52	47.0	40	57	48.5	41	60	50.5	39	61	50.0	
01/15	38	55	46.5	37	48	42.5	39	47	43.0	35	47	41.0	36	49	42.5	38	58	48.0	38	58	48.0	40	55	47.5	42	58	50.0	44	60	52.0	42	63	52.5	41	64	52.5	
01/16	36	48	42.0	44	46	45.0	34	47	40.5	34	51	42.5	38	57	47.5	39	57	48.0	40	54	47.0	39	57	48.0	38	57	47.5	39	61	50.0	39	62	50.5	42	62	52.0	
01/17	40	50	45.0	41	46	43.5	33	54	43.5	37	59	48.0	39	57	48.0	41	53	47.0	40	56	48.0	38	58	48.0	37	58	47.5	40	62	51.0	40	61	50.5	39	60	49.5	
01/18	39	45	42.0	32	53	42.5	36	59	47.5	39	58	48.5	42	52	47.0	38	56	47.0	39	58	48.5	39	60	49.5	42	60	51.0	39	58	48.5	40	61	50.5	40	59	49.5	
01/19	31	54	42.5	35	59	47.0	40	57	48.5	42	52	47.0	41	56	48.5	40	59	49.5	42	60	51.0	43	60	51.5	41	59	50.0	43	56	49.5	42	58	50.0	40	58	49.0	
01/20	34	53	43.5	40	56	48.0	41	50	45.5	41	53	47.0	41	60	50.5	43	61	52.0	47	57	52.0	46	59	52.5	45	58	51.5	41	59	50.0	45	58	51.5	40	58	49.0	
01/21	39	53	46.0	44	51	47.5	41	54	47.5	41	61	51.0	44	60	52.0	46	56	51.0	47	59	53.0	43	58	50.5	44	62	53.0	42	63	52.5	44	65	54.5	44	65	54.5	
01/22	43	50	46.5	47	54	50.5	41	61	51.0	45	59	52.0	48	59	53.5	49	59	54.0	41	56	48.5	42	56	49.0	42	61	51.5	46	59	52.5	42	59	50.5	40	61	50.5	
01/23	42	56	49.0	38	57	47.5	45	59	52.0	46	59	52.5	48	60	54.0	42	55	48.5	42	57	49.5	42	58	50.0	45	66	55.5	47	65	56.0	45	64	54.5	40	62	51.0	
01/24	37	54	45.5	47	58	52.5	45	59	52.0	47	60	53.5	42	58	50.0	46	58	52.0	40	60	50.0	40	65	52.5	44	67	55.5	44	66	55.0	41	65	53.0	41	63	52.0	
01/25	47	55	51.0	49	58	53.5	48	61	54.5	42	59	50.5	44	58	51.0	40	62	51.0	43	66	54.5	45	68	56.5	47	67	57.0	46	62	54.0	40	62	51.0	39	59	49.0	
01/26	49	55	52.0	52	60	56.0	40	58	49.0	43	60	51.5	39	64	51.5	43	69	56.0	45	70	57.5	46	72	59.0	44	68	56.0	44	67	55.5	44	66	55.0	43	66	54.5	
01/27	51	65	58.0	49	58	53.5	43	57	50.0	40	63	51.5	44	69	56.5	45	70	57.5	45	70	57.5	43	63	53.0	42	59	50.5	36	62	49.0	39	63	51.0	39	70	54.5	
01/28	48	60	54.0	50	57	53.5	40	63	51.5	45	69	57.0	46	71	58.5	45	70	57.5	43	60	51.5	36	55	45.5	38	60	49.0	36	62	49.0	41	65	53.0	44	61	52.5	
01/29	44	57	50.5	45	63	54.0	45	69	57.0	46	68	57.0	44	65	54.5	43	55	49.0	32	53	42.5	34	58	46.0	38	62	50.0	44	65	54.5	43	65	54.0	41	66	53.5	
01/30	44	65	54.5	46	67	56.5	44	69	56.5	44	65	54.5	44	54	49.0	32	53	42.5	34	58	46.0	38	61	49.5	44	68	56.0	45	65	55.0	47	64	55.5	40	66	53.0	
01/31																																					

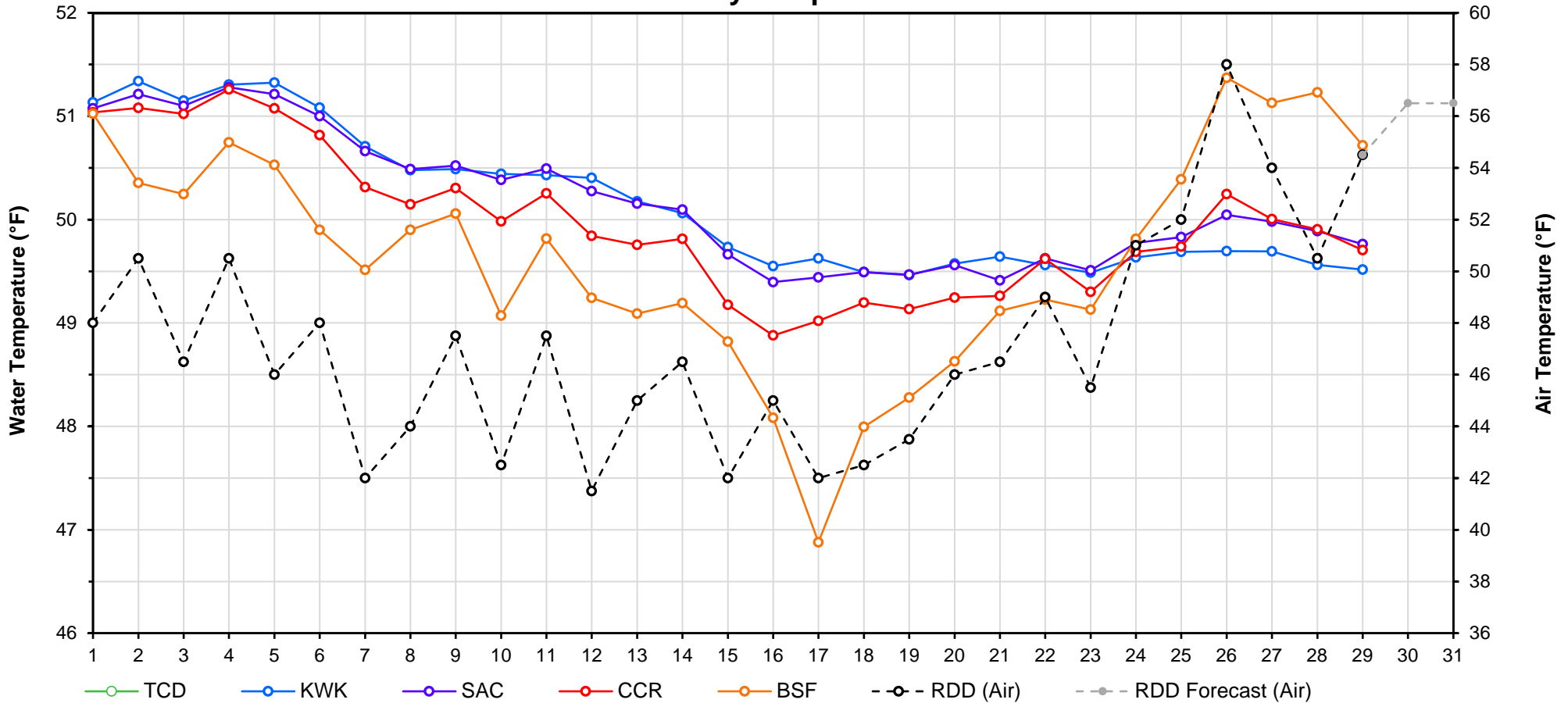
Web Links

- [10-Day Min/Max Forecast](#)
- [Previous Days Min/Max Actuals](#)

Legend

- NR = Forecasted temperatures not recorded
- 100** = Previous day actual temperatures in red and bolded indicate a record temperature for that date

# Mean Daily Temperatures



Station Details			
Code	Body of Water	Location <sup>1</sup>	CDEC Link
TCD	N/A	Shasta Power Plant	N/A
SHD	Sacramento River	0.3 miles downstream of Shasta Power Plant	<a href="#">Click Here</a>
SPP	N/A	Spring Creek Power Plant	N/A
KWK	Sacramento River	0.8 miles downstream of Keswick Dam	<a href="#">Click Here</a>
SAC	Sacramento River	4.8 miles downstream of Keswick Dam	<a href="#">Click Here</a>
CCR	Sacramento River	9.7 miles downstream of Keswick Dam	<a href="#">Click Here</a>
BSF	Sacramento River	25 miles downstream of Keswick Dam	<a href="#">Click Here</a>
JLF	Sacramento River	34 miles downstream of Keswick Dam	<a href="#">Click Here</a>
BND	Sacramento River	41 miles downstream of Keswick Dam	<a href="#">Click Here</a>
RDB	Sacramento River	58 miles downstream of Keswick Dam	<a href="#">Click Here</a>
IGO	Clear Creek	7.3 miles downstream of Whiskeytown Dam	<a href="#">Click Here</a>
LWS	Trinity River	1.1 miles downstream of Lewiston Dam	<a href="#">Click Here</a>
DGC <sup>2</sup>	Trinity River	19 miles downstream of Lewiston Dam	<a href="#">Click Here</a>
NFH <sup>3</sup>	Trinity River	38 miles downstream of Lewiston Dam	<a href="#">Click Here</a>

Temperature Control Point		
Point	Temp. (°F)	Begin Date
<b>BSF</b>	<b>56.0</b>	<b>05/25/2018</b>

## Notes

<sup>1</sup> Distances are approximate

<sup>2</sup> DGC is only reported in September

<sup>3</sup> NFH is only reported in October, November and December

### Shasta Lake Isothermobaths - 2020 (Water Temperature, in °F)



### Trinity Lake Isothermobaths - 2020 (Water Temperature, in °F)



# Whiskeytown Lake Isothermobaths - 2020 (Water Temperature, in °F)

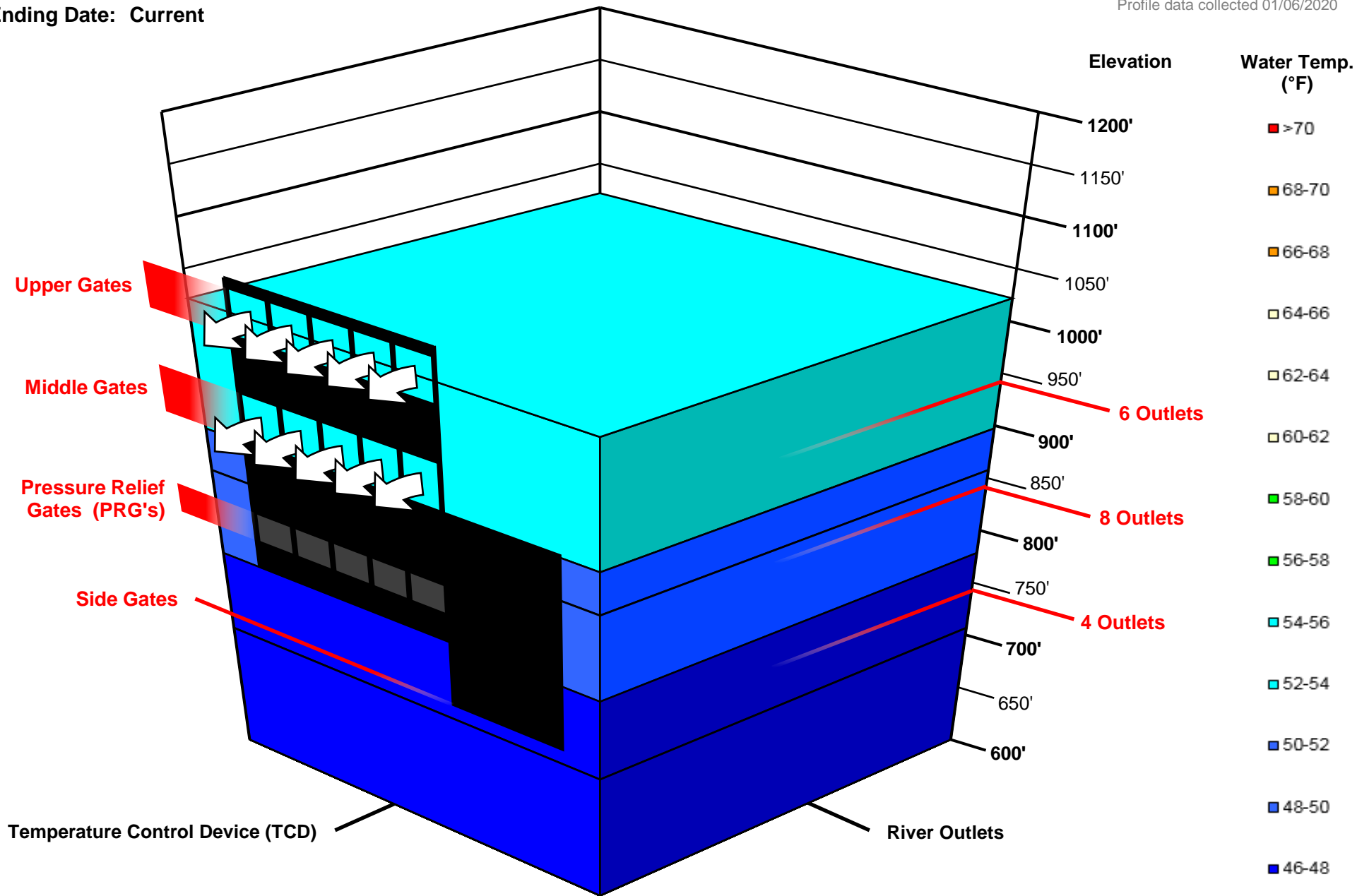


# Shasta TCD Configuration

Starting Date: 12/19/2019

Ending Date: Current

Profile data collected 01/06/2020

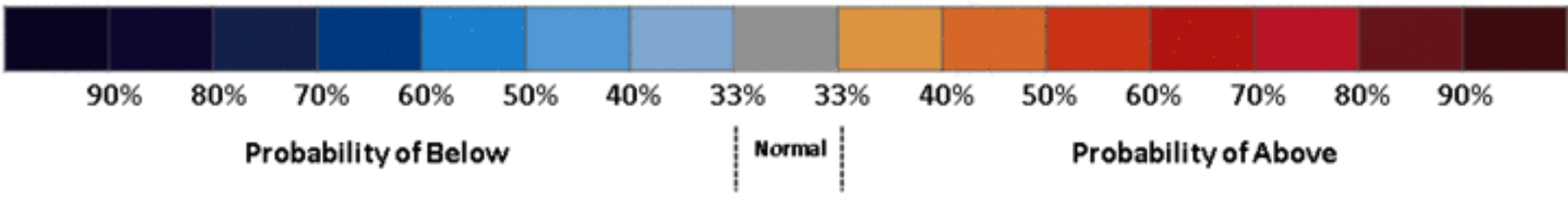
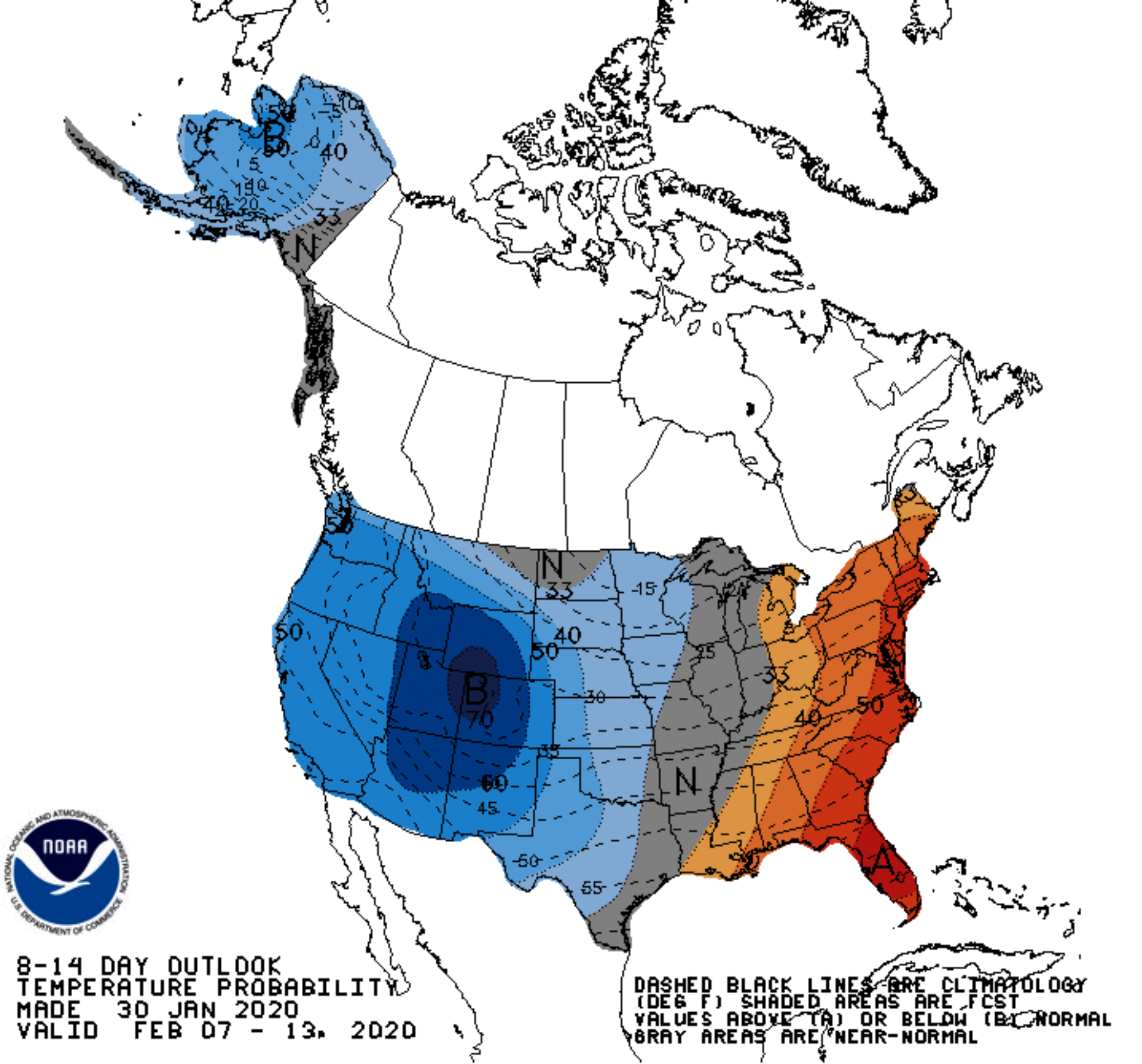


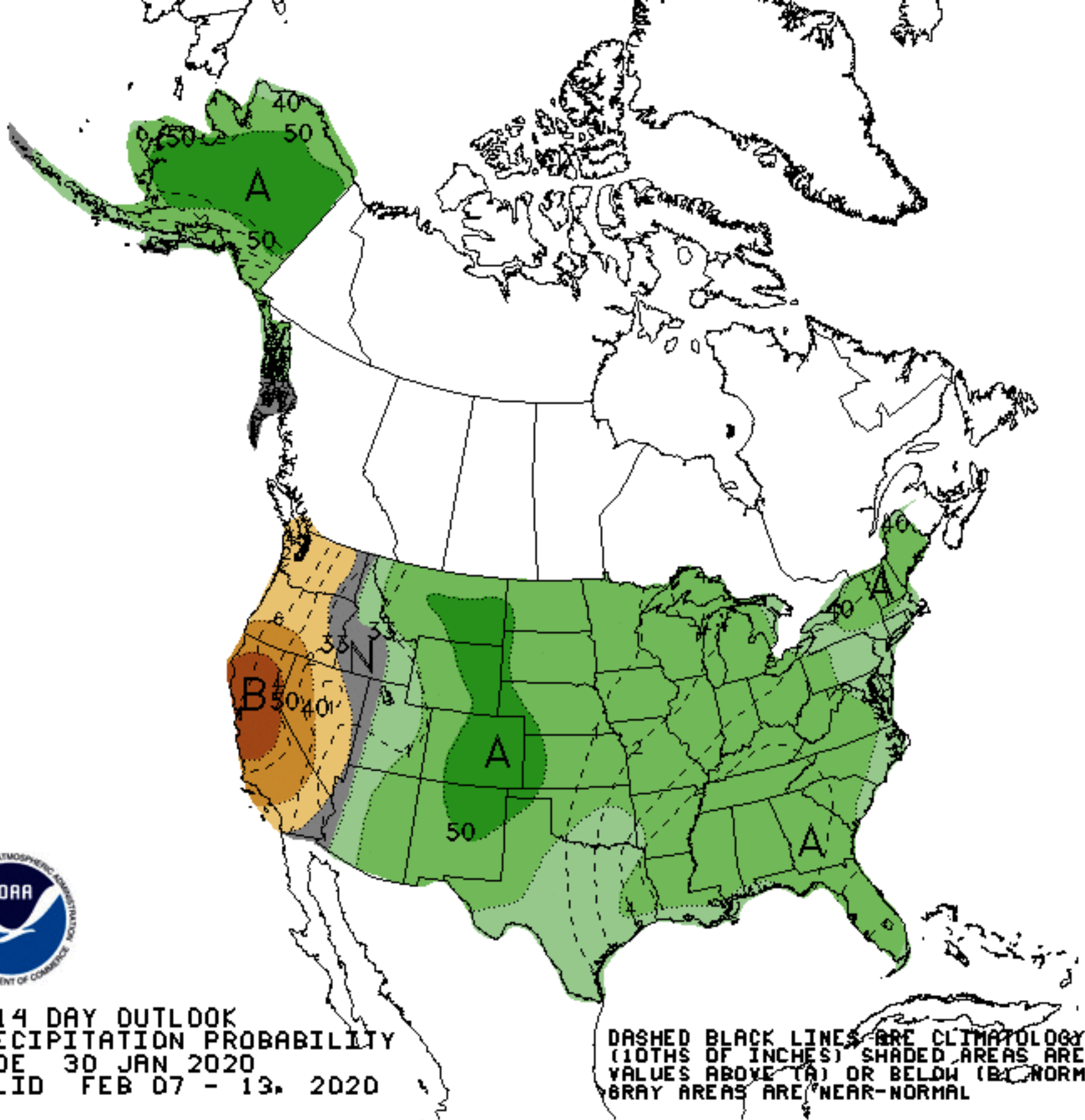
Temperature Control Device (TCD)

River Outlets

Arrows indicate open Gate or Outlet (i.e. Water flowing from this location)







8-14 DAY OUTLOOK  
 PRECIPITATION PROBABILITY  
 MADE 30 JAN 2020  
 VALID FEB 07 - 13, 2020

DASHED BLACK LINES ARE CLIMATOLOGY  
 (10THS OF INCHES) SHADED AREAS ARE FCS  
 VALUES ABOVE (A) OR BELOW (B) NORMAL  
 GRAY AREAS ARE NEAR-NORMAL

