



— BUREAU OF —  
RECLAMATION

## American River Group

1:30 PM – 3:30 PM

Conference Line: +1 (321) 209-6143;

Access Code: 596 336 817#

Webinar: Join Microsoft Teams Meeting

Thursday, March 19, 2026

### Agenda

1. Introductions
2. Announcements
3. Operations Forecast
  - a. SMUD
  - b. PCWA
4. Central Valley Operations
  - a. Spring Pulse Flow Discussion
5. Fisheries Update
  - a. CDFW
  - b. CFS
6. Next Meetings:
  - a. Regular Monthly ARG Meeting – Thursday April 16, 1:30-3:30

# SMUD American River Group Update 2/18/2026

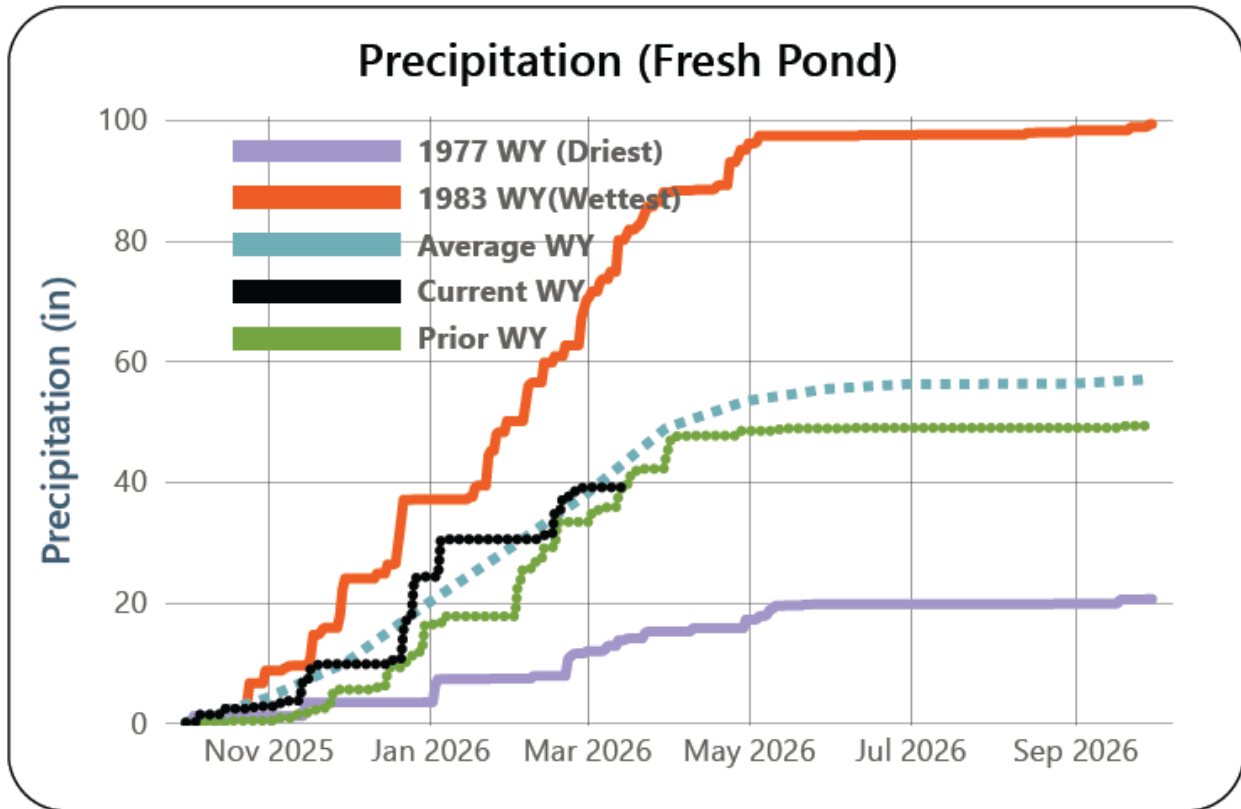


Figure 1. Fresh Pond Precipitation

Figure 1 is a line graph of fresh pond precipitation in inches for October 2025 – September 2026. It includes precipitation data from the driest water year (1977), 1983’s water year snowpack, average, current, and prior water year. The current precipitation is 89.9% of the average to date and 68.5% of the water year average.

Table 1. Fresh Pond Precipitation

Month	Current Water Year	Historical Average	% of Historical Average
October	2.70	3.99	68%
November	7.00	5.87	119%
December	14.50	9.88	147%
January	6.20	9.16	68%
February	8.55	8.70	98%
March	0.08	11.28	1%
April	0.00	4.46	0%
May	0.00	2.02	0%

Month	Current Water Year	Historical Average	% of Historical Average
June	0.00	0.78	0%
July	0.00	0.04	0%
August	0.00	0.04	0%
September	0.00	0.72	0%
Total	39.03	56.94	69%

\* Month to date total, full month historical average.

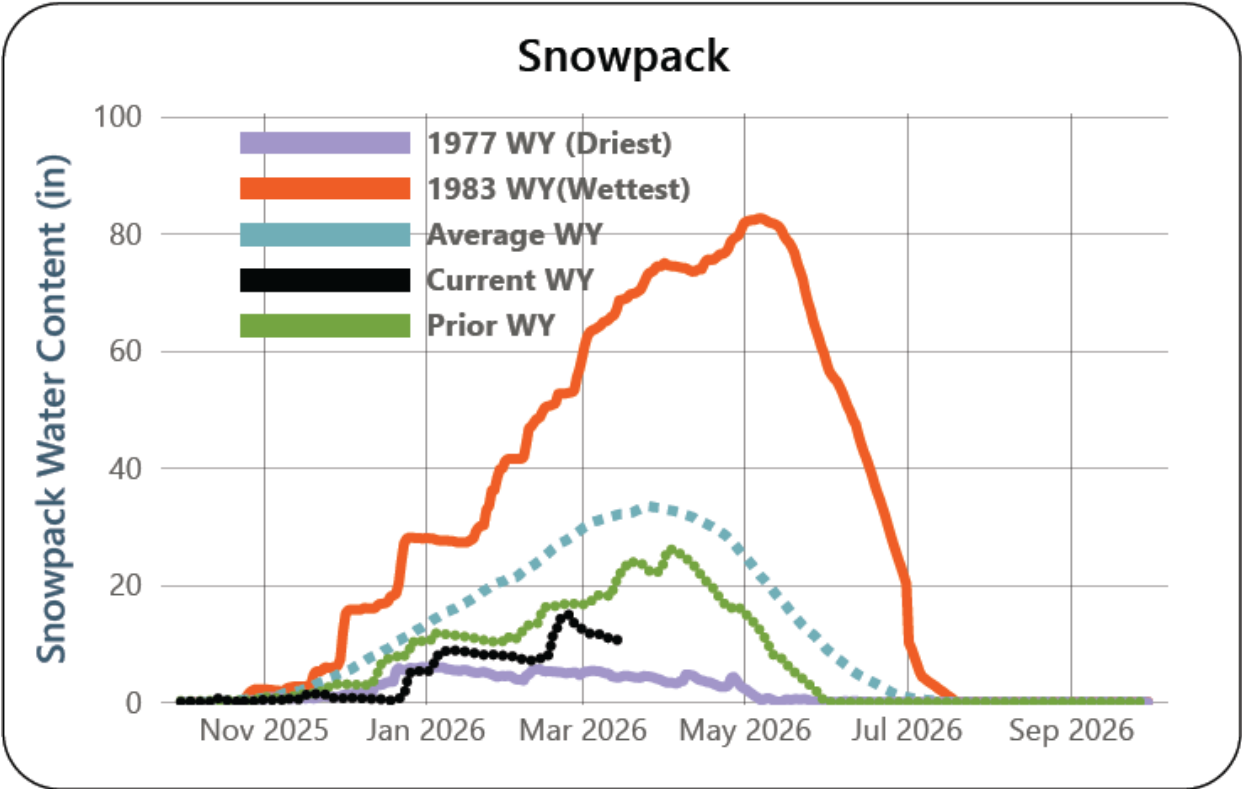


Figure 2. March 16, 2026 snowpack

Figure 2 is a line graph of snowpack water content in inches for October 2025- September 2026. It includes data from the driest water year (2015), 1983’s water year snowpack, average, current, and prior water year. Runoff into the storage reservoir basins is 32.3% of average to date and 26.2% of the April 1 average.

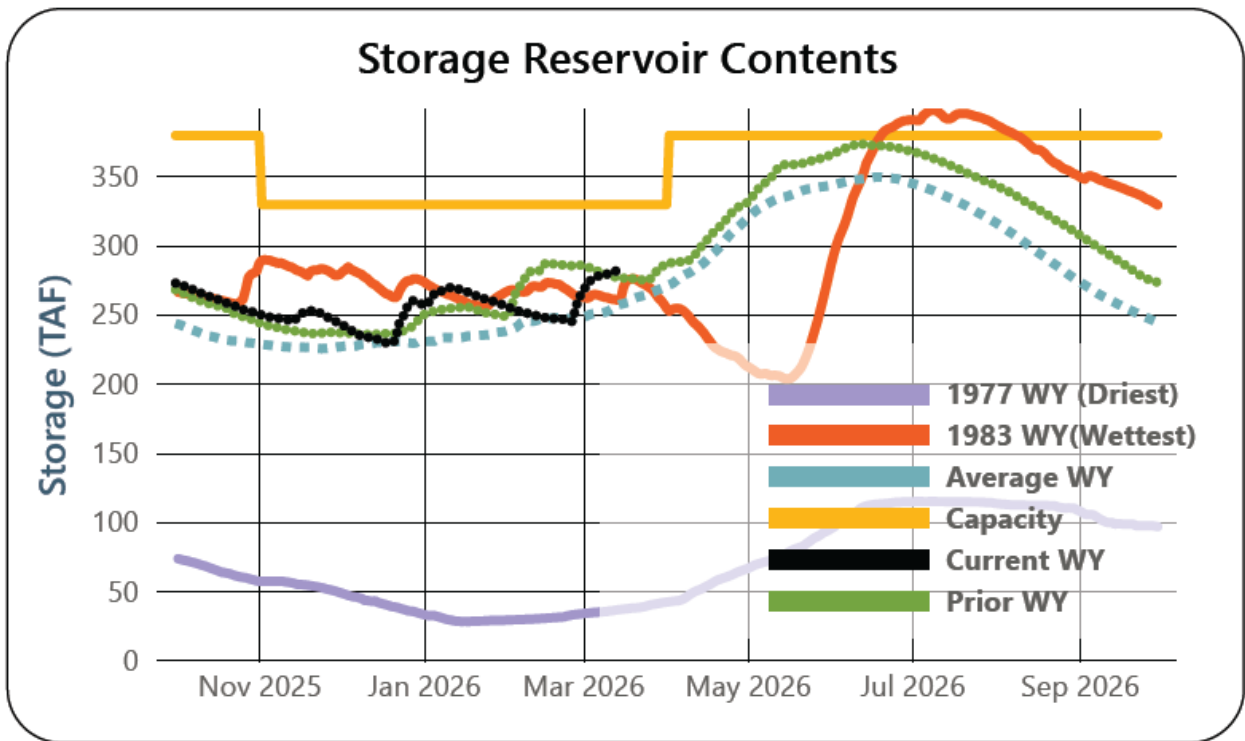


Figure 3. Storage Reservoir Contents

Figure 3 is a line graph of SMUD storage reservoir contents for October 2025 through September 2026. It includes data from the driest water year (1977), 1983's water year snowpack, average, current, and prior water year. The total capacity of the reservoir network is also shown.

Table 2. SMUD Storage Reservoirs

Reservoir	Capacity Acre-ft	Current Acre-ft	Current % Full	Prior Year Acre-Ft	Prior Year % Full	Hist. Avg Acre-ft	Hist. Avg % Full
Loon Lake Reservoir	69,310	49,779	71.8%	41,002	59%	41,304	60%
Ice House Reservoir	43,500	29,648	68.2%	28,326	65%	28,975	67%
Union Valley Reservoir	266,370	204,078	76.6%	206,759	78%	190,132	71%
Total Reservoir Storage	379,180	283,504	74.8%	276,086	73%	260,412	69%

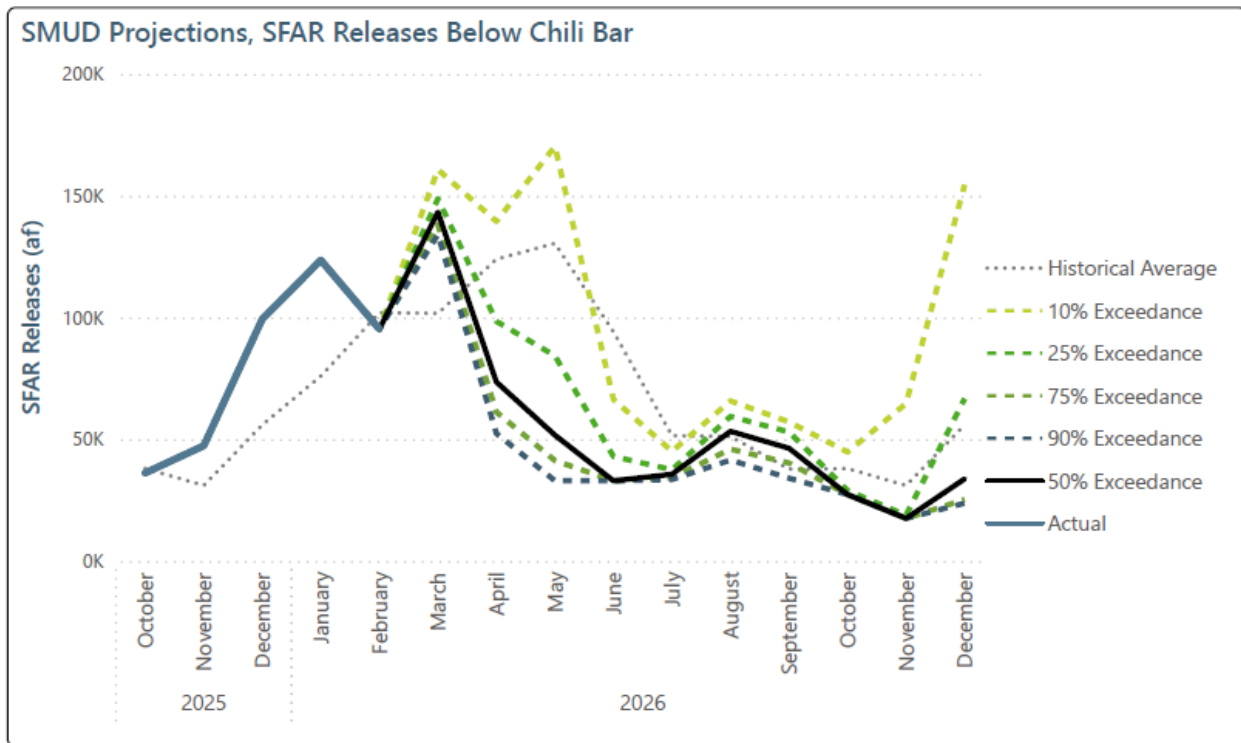


Figure 4. Chili Bar releases into the South Fork American River. Projections based on forecast from March 16th, 2026.

Figure 4 is a line graph of observed and projected releases below Chili Bar from October 2025 to December 2026. The graph includes a last 10-year average, actual prior water year data, and projections of 90%, 75%, 50%, 25%, and 10% exceedance likelihood.

Table 3. Chili Bar releases into the South Fork American River

Type (Actual or Forecast)	Date	Daily Mean Release Rate (cfs)	Monthly Total Release (acre-ft)	Monthly Total Release (90% Exceedance)	Monthly Total Release (10% Exceedance)
Actual	Oct-25	589	36,150	36,150	36,150
Actual	Nov-25	797	47,329	47,329	47,329
Actual	Dec-25	1,619	99,405	99,405	99,405
Actual	Jan-26	2,013	123,558	123,558	123,558
Actual	Feb-26	1,718	95,255	95,255	95,255
Forecast	Mar-26	2,334	143,264	134,095	160,766
Forecast	Apr-26	1,237	73,506	52,362	139,486
Forecast	May-26	842	51,677	32,949	170,291
Forecast	Jun-26	554	32,911	32,911	66,377
Forecast	Jul-26	580	35,622	33,477	45,028

Type (Actual or Forecast)	Date	Daily Mean Release Rate (cfs)	Monthly Total Release (acre-ft)	Monthly Total Release (90% Exceedance)	Monthly Total Release (10% Exceedance)
Forecast	Aug-26	868	53,259	41,444	65,747
Forecast	Sep-26	779	46,284	34,008	57,084
Forecast	Oct-26	444	27,277	27,277	44,742
Forecast	Nov-26	294	17,471	17,471	64,674
Forecast	Dec-26	549	33,725	23,742	154,513

Table 4. Reservoir Releases in Cubic Feet/Second

Reservoir	Dam	WY 2025	WY 2026	15 Yr Median
Trinity	Lewiston	1,981	300	308
Sacramento	Keswick	6,040	4,143	4,444
Feather	Oroville (SWP)	10,000	5,979	1,750
American	Nimbus	2,538	2,461	1,886
Stanislaus	Goodwin	614	201	306
San Joaquin	Friant	914	0	400

Table 5. Storage in Major Reservoirs in Thousands of Acre-Feet

Reservoir	Capacity	15 Yr Avg	WY 2025	WY 2026	% of 15 Yr Avg
Trinity	2,448	1,623	2,035	2,214	136
Shasta	4,552	3,287	3,868	4,030	123
Folsom	977	564	648	768	136
New Melones	2,420	1,530	1,961	1,874	122
Fed. San Luis	966	668	764	750	112
Total North CVP	11,363	7,672	9,276	9,636	126
Millerton	521	300	323	0	0
Oroville (SWP)	3,425	2,412	2,945	3,015	125

Table 6. Accumulated Inflow for Water Year to Date in Thousands of Acre-Feet

Reservoir	Current WY 2026	WY 1977	WY 1983	15 Yr Avg	% of 15 Yr Avg
Trinity	801	67	1,097	515	156
Shasta	3,269	1,287	6,091	2,721	120
Folsom	1,352	182	3,107	1,207	112
New Melones	393	N/A	1,012	399	99
Millerton	617	105	1,411	441	140

Table 7. Accumulated Precipitation for Water Year to Date in Inches

<b>Reservoir</b>	<b>Current WY 2026</b>	<b>WY 1977</b>	<b>WY 1983</b>	<b>Average (N Years)</b>	<b>% of Average</b>	<b>Last 24 Hours</b>
Trinity at Fish Hatchery	25.48	4.63	45.04	24.48 (66)	104	0.00
Sacramento at Shasta Dam	59.17	6.22	90.36	47.6 (71)	124	0.00
American at Blue Canyon	43.24	14.11	85.19	50.70 (52)	85	0.00
Stanislaus at New Melones	23.12	N/A	37.49	21.35 (49)	108	0.00
San Joaquin at Huntington Lk	26.96	5.20	67.30	30.71 (53)	88	0.00

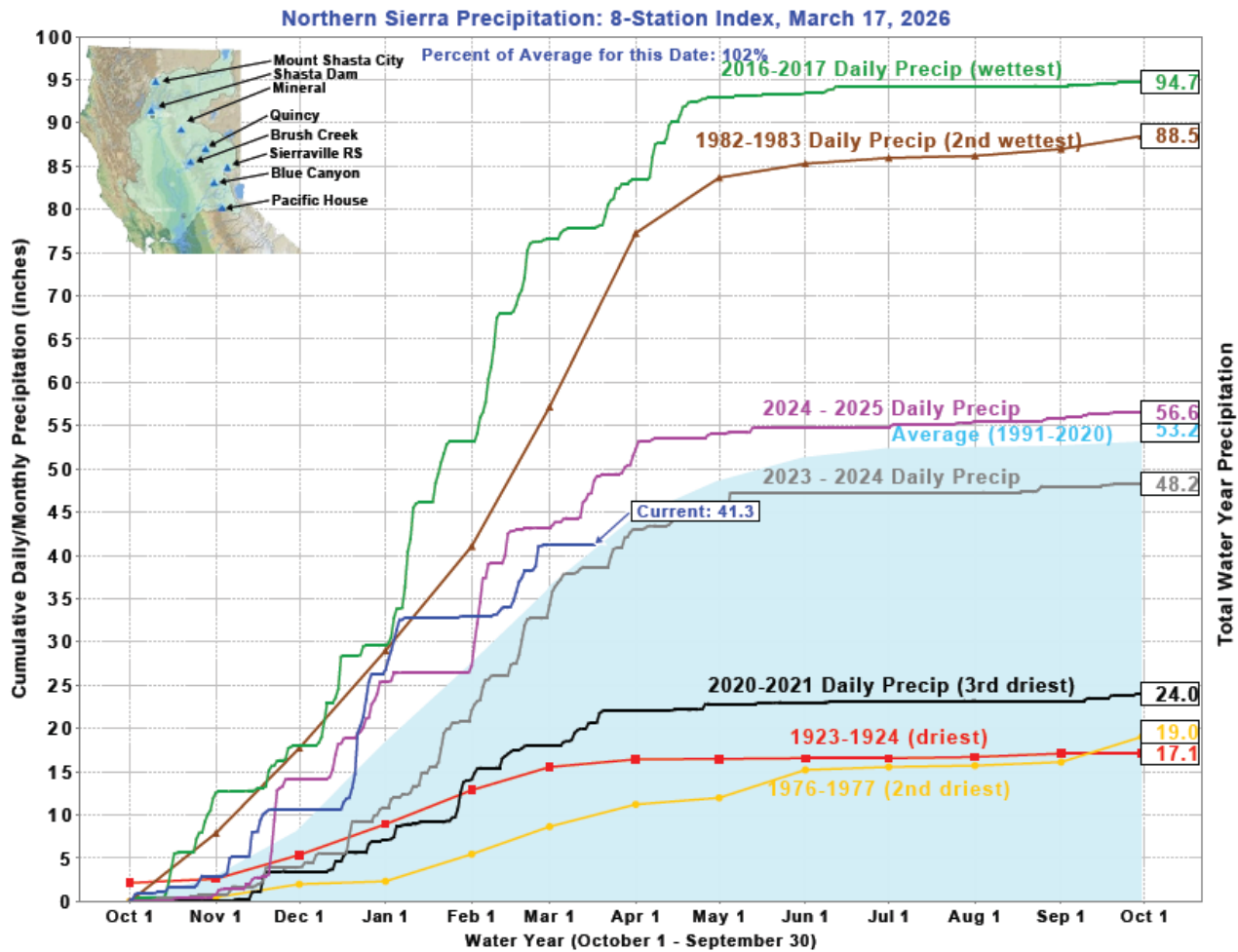


Figure 5. Total and Daily/Monthly Precipitation for Water Year 2026

Figure 5 is a graph depicting total year precipitation and cumulative daily/monthly precipitation in inches. The average for 1991-2020 is shown in shaded blue area (53.2 inches), 2016-2017 daily precipitation is the wettest at 94.7 inches, daily precipitation for 1982-1983 as the 3rd wettest 88.5 inches, 2023-2024 daily precipitation at 48.2 inches, current water year at 41.3 inches, 2024-2025 daily precipitation at 56.6 inches, 2020-2021 daily precipitation at 24.0 inches, 1923-1924 at 17.1 inches, and 1976-1977 at 19.0 inches.



## Northern Sierra 8-Station

Precipitation Index for Water Year 2026 - Updated on March 17, 2026 09:48 PM

Note: Monthly totals may not add up to seasonal total because of rounding

Water Year Monthly totals are calculated based on Daily precipitation data from 12am to 12am PST

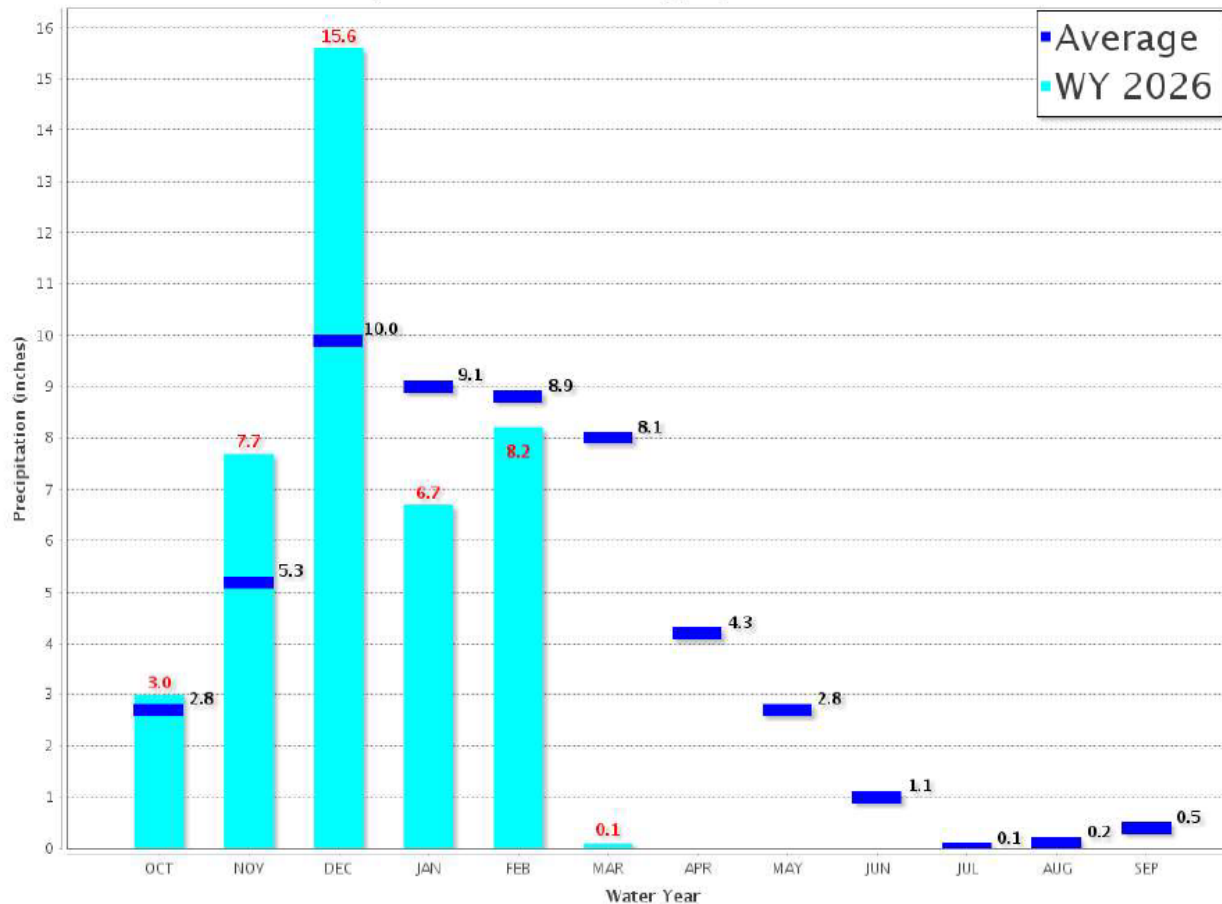


Figure 6. Northern Sierra 8-Station Precipitation Index

Figure 6 displays monthly precipitation totals for Water Year (WY) 2026 compared to the long-term average for the Northern Sierra 8-Station Index. Bars show observed QY 2026 precipitation through February, while markers indicate the historical average by month. The figure shows above-average precipitation in November and December, with March considerably below the historical average.

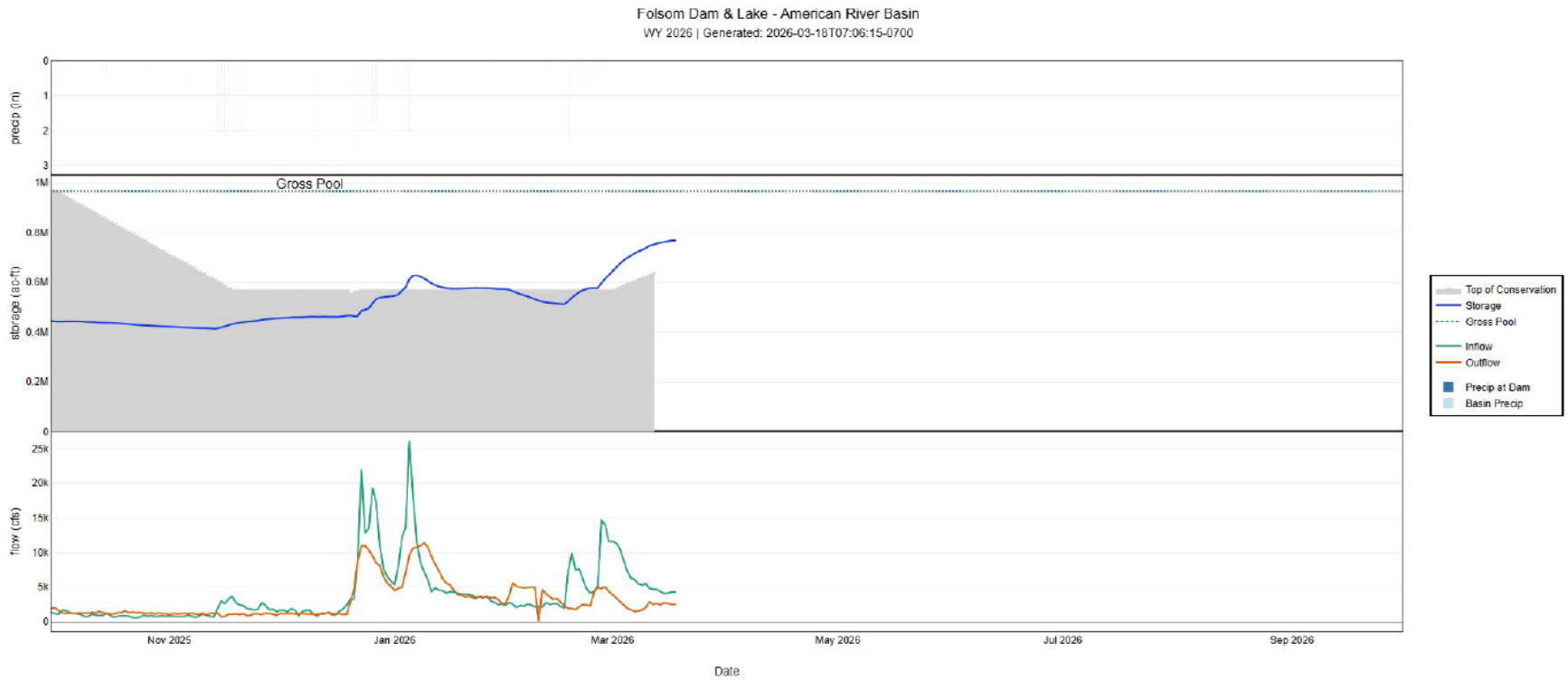


Figure 7. Folsom Dam and Lake Flow, Storage, and Precipitation Totals

Figure 7 is a graph that compares the flow, storage, and precipitation over time for the American River Basin.

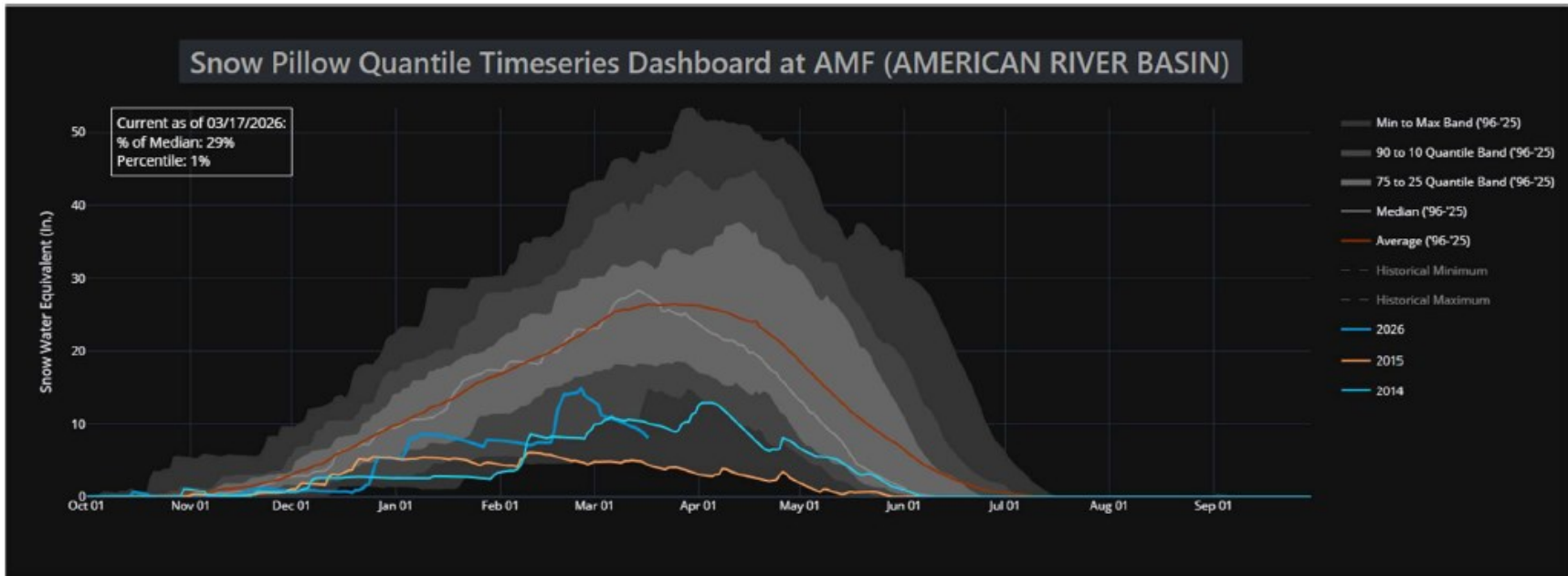


Figure 8. Snow Pillow Quantile Timeseries Dashboard at AMF (American River Basin)

Figure 8 displays snow water equivalent (SWE) for the American River Basin compared to the historical range (1996–2025). Shaded bands show the historical minimum–maximum range and the 90–10 and 75–25 percentile bands, with the historical median and average shown for reference. Lines represent recent water years. As of March 17, 2026, basin SWE is approximately 29% of median (1<sup>st</sup> percentile).

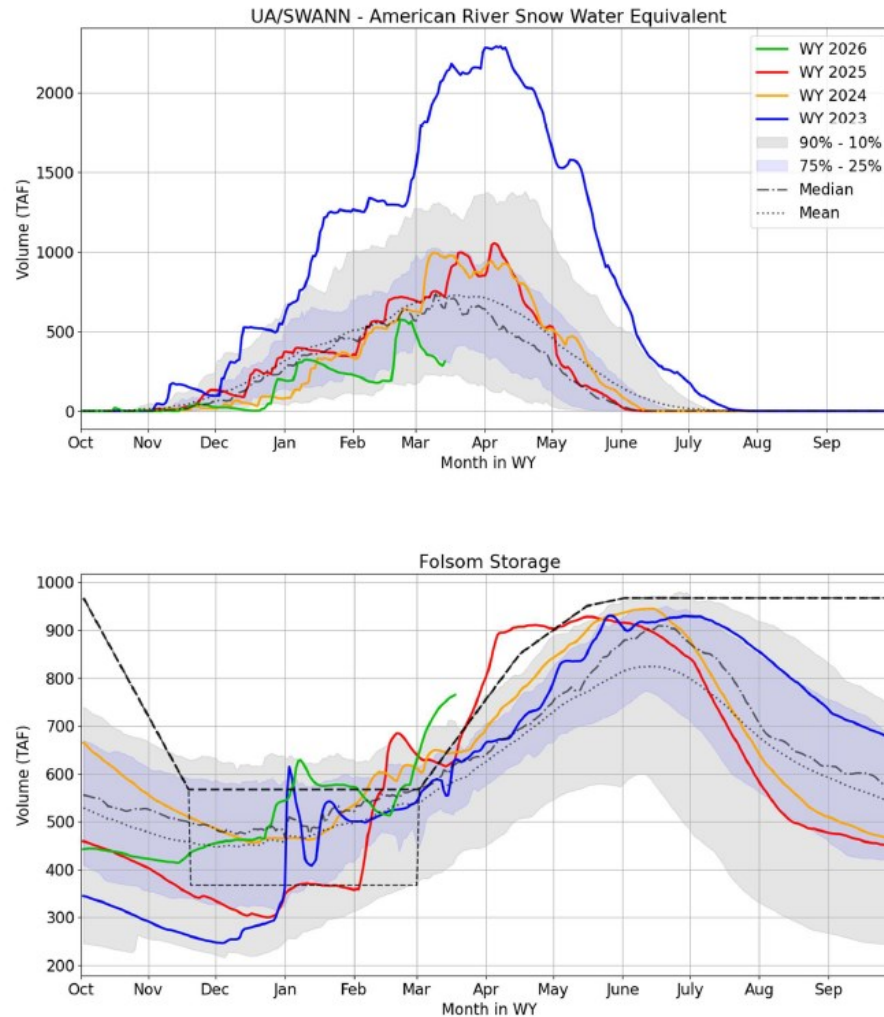


Figure 9. American River Snow Water Equivalent (UA/SWANN) and Folsom Lake Storage

Figure 9 includes two graphs showing estimated snow water equivalent (SWE) in the American River basin and storage in Folsom Lake during water year 2026 compared to historical conditions and recent water years. The upper graph shows SWE increasing through the winter months into early March and remaining below the historical median range for this time of year, while the lower graph shows Folsom Lake storage increasing through winter into early spring and remaining within the lower portion of the historical range for this time of year.

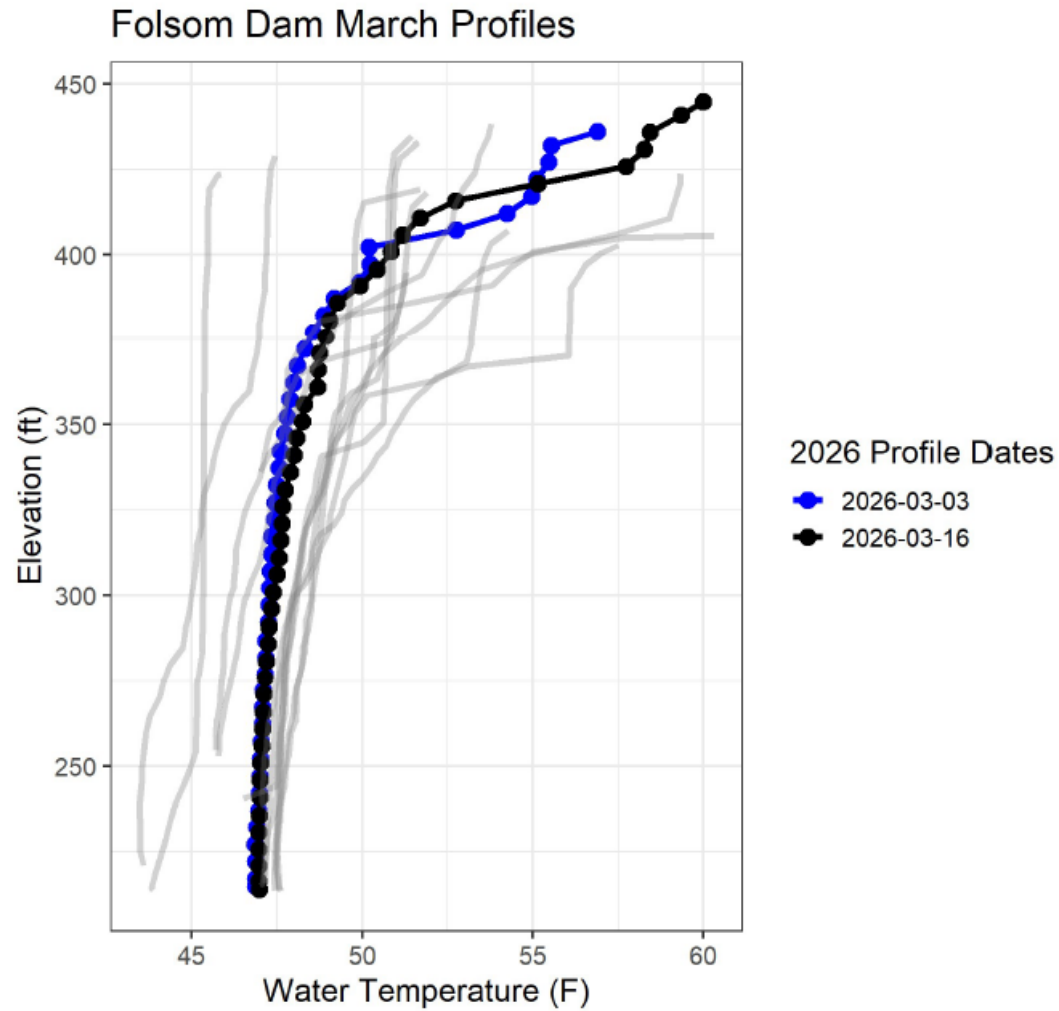


Figure 10. Folsom Dam March Temperature Profiles

Figure 10 shows two vertical temperature profiles collected at Folsom Dam in March 2026 compared to historical March profiles. The profiles from March 3 and March 16, 2026 indicate cooler temperatures at depth and warmer temperatures near the surface, with slightly warmer surface conditions observed in the later profile.

Bureau of Reclamation  
 Historical Archive and Report Database

Table 8. February 2026 | Folsom Lake Daily Operations | Run Date: 03/10/2026

Day	Elev	Storage (1000 Acre-Feet) in Lake	Storage (1000 Acre-Feet) Change	Computed * Inflow C.F.S.	Release - C.F.S. River Power	Release - C.F.S. River Spill	Release - C.F.S. River Outlet	Pumping Plant	Evap. - C.F.S.	Evap. - Inches	Precip Inches
N/A	N/A	545.7	N/A	N/A	N/A	N/A	N/A	N/A	N/A	N/A	N/A
1	424.36	564.4	-6.2	2,520	4,863	648	0	90	20	0.07	0.00
2	423.64	558.3	-6.1	2,045	5,021	1	0	90	17	0.06	0.00
3	423.02	553.1	-5.2	2,357	4,893	0	0	82	25	0.09	0.00
4	422.39	547.8	-5.3	2,247	4,807	0	0	82	20	0.07	0.00
5	421.81	542.9	-4.8	2,537	4,874	0	0	85	22	0.08	0.00
6	421.19	537.8	-5.1	2,398	4,883	0	0	89	22	0.08	0.00
7	420.50	532.1	-5.7	2,156	4,913	0	0	91	22	0.08	0.00
8	419.82	526.5	-5.6	1,497	3,669	534	0	90	19	0.07	0.00
9	419.20	521.5	-5.1	2,114	4,519	29	0	87	27	0.10	0.00
10	418.90	519.0	-2.4	2,796	3,941	0	0	85	0	0.00	0.06
11	418.63	516.8	-2.2	2,480	3,503	0	0	77	0	0.00	0.16
12	418.48	515.6	-1.2	2,589	3,123	0	0	61	16	0.06	0.00
13	418.30	514.2	-1.5	2,601	3,239	0	0	76	19	0.07	0.00
14	418.14	512.9	-1.3	2,171	2,731	0	0	81	11	0.04	0.00
15	418.06	512.2	-0.6	2,002	2,239	0	0	78	11	0.04	0.00

Day	Elev	Storage (1000 Acre- Feet) in Lake	Storage (1000 Acre- Feet) Change	Computed * Inflow C.F.S.	Release - C.F.S. River Power	Release - C.F.S. River Spill	Release - C.F.S. River Outlet	Pumping Plant	Evap. - C.F.S.	Evap. - Inches	Precip Inches
16	419.40	523.1	10.9	7,386	1,841	0	0	72	0	0.00	3.12
17	421.32	538.9	15.8	9,874	1,848	0	0	70	0	0.00	0.99
18	422.67	550.1	11.3	7,427	1,677	0	0	72	0	0.00	0.20
19	423.95	560.9	10.8	7,647	2,128	0	0	74	0	0.00	0.20
20	424.81	568.3	7.3	6,149	2,369	0	0	82	0	0.00	0.20
21	425.35	572.9	4.6	4,767	2,327	0	0	84	20	0.07	0.00
22	425.78	576.6	3.7	4,186	2,215	0	0	85	20	0.07	0.00
23	425.80	576.8	0.2	4,362	4,163	0	0	80	32	0.11	0.00
24	425.85	577.2	0.4	5,189	4,903	0	0	69	0	0.00	0.16
25	428.10	596.8	19.6	14,675	4,726	0	0	66	0	0.00	0.07
26	430.10	614.5	17.7	13,991	3,840	1,138	0	72	0	0.00	0.06
27	431.68	628.8	14.2	11,581	4,060	253	0	75	27	0.09	0.00
28	433.35	644.0	15.2	11,613	3,849	0	0	78	21	0.07	0.00
Totals	N/A	N/A	24.7	192,222	125,469	48,024	3,366	2,420	397	1.36	3.23
Acre- Feet	N/A	N/A	24,700	381,272	248,868	95,256	6,676	4,800	787	N/A	N/A

\* Computed inflow is the sum of change in storage, releases, pumping, and evaporation

Summary: Release (acre-feet)

Power	200,659
Spill	5,163
Outlet	0
Pumping Plant	4,409
Total Releases	210,231

Summary: Precipitation (Month/Inches)

This month	5.22
October 1, 2025 to date	31.09

Bureau of Reclamation  
 Historical Archive and Report Database

Table 9. March 2026 | Folsom Lake Daily Operations | Run Date: 03/18/2026

Day	Elev	Storage (1000 Acre- Feet) in Lake	Storage (1000 Acre- Feet) Change	Computed * Inflow C.F.S.	Release - C.F.S. River Power	Release - C.F.S. River Spill	Release - C.F.S. River Outlet	Pumping Plant	Evap. - C.F.S.	Evap. - Inches	Precip Inches
N/A	N/A	644.0	N/A	N/A	N/A	N/A	N/A	N/A	N/A	N/A	N/A
1	435.06	659.7	15.8	11,373	3,322	0	0	78	28	0.09	0.00
2	436.67	674.8	15.0	10,523	2,842	0	0	76	28	0.09	0.00
3	438.02	687.5	12.7	8,862	2,346	0	0	74	28	0.09	0.00
4	439.12	697.9	10.5	7,259	1,868	0	0	77	38	0.12	0.00
5	440.05	706.8	8.9	6,269	1,634	0	0	79	67	0.21	0.00
6	440.99	715.9	9.1	6,110	1,396	0	0	87	61	0.19	0.00
7	441.78	723.6	7.7	5,467	1,456	0	0	91	58	0.18	0.00
8	442.50	730.6	7.0	5,292	1,606	0	0	93	58	0.18	0.00
9	443.19	737.3	6.7	5,512	1,954	0	0	98	59	0.18	0.00
10	443.79	743.2	5.9	5,385	2,266	0	0	102	46	0.14	0.00
11	444.18	747.0	3.8	4,829	2,745	0	0	99	49	0.15	0.00
12	444.61	751.3	4.2	4,687	2,406	0	0	92	46	0.14	0.00
13	445.01	755.3	4.0	4,681	2,526	0	0	113	49	0.15	0.00
14	445.39	759.0	3.8	4,373	2,306	0	0	111	50	0.15	0.00
15	445.65	761.6	2.6	4,092	2,629	0	0	114	46	0.14	0.00

Day	Elev	Storage (1000 Acre- Feet) in Lake	Storage (1000 Acre- Feet) Change	Computed * Inflow C.F.S.	Release - C.F.S. River Power	Release - C.F.S. River Spill	Release - C.F.S. River Outlet	Pumping Plant	Evap. - C.F.S.	Evap. - Inches	Precip Inches
16	445.94	764.5	2.9	4,131	2,508	0	0	119	50	0.15	0.00
17	446.29	768.0	3.5	4,304	2,366	0	0	123	50	0.15	0.00
Totals	N/A	N/A	124.1	103,149	38,176	0	0	1,626	811	2.50	0.00
Acre- Feet	N/A	N/A	124,100	204,596	75,722	0	0	3,225	1,609	N/A	N/A

\* Computed inflow is the sum of change in storage, releases, pumping, and evaporation

Summary: Release (acre-feet)

Power                    75,722  
Spill                      0  
Outlet                     0  
Pumping Plant        3,225  
Total Releases        78,947

Summary: Precipitation (Month/Inches)

This month                0.00  
October 1, 2025 to date   31.09

Bureau of Reclamation  
 Historical Archive and Report Database

Table 10. February 2026 | Lake Natoma Daily Operations | Run Date: 03/10/2026

Day	Elev	Storage (Acre-Feet) in Lake	Storage (Acre-Feet) Change	Computed * Inflow C.F.S.	Release - C.F.S. Folsom South	Release - C.F.S. Power	Release - C.F.S. Spill	Release - C.F.S. Hatchery	Evap. - C.F.S. (1)
N/A	N/A	7,253	N/A	N/A	N/A	N/A	N/A	N/A	N/A
1	123.26	7,913	660	5,254	0	4,478	332	110	1
2	123.83	8,181	268	4,995	9	4,398	342	110	1
3	123.89	8,209	28	4,891	19	4,405	342	110	1
4	123.65	8,097	-112	4,828	31	4,400	342	110	1
5	123.67	8,106	9	4,896	35	4,404	341	110	1
6	123.70	8,120	14	4,899	35	4,407	339	110	1
7	123.90	8,214	94	4,919	16	4,404	341	110	1
8	123.24	7,904	-310	4,391	0	4,427	9	110	1
9	123.44	7,998	94	4,562	0	4,404	0	110	1
10	123.30	7,932	-66	4,020	0	3,943	0	110	0
11	123.45	8,003	71	3,594	0	3,448	0	110	0
12	122.50	7,566	-437	3,252	0	3,361	0	110	1
13	123.44	7,998	432	3,266	0	2,937	0	110	1
14	124.33	8,426	428	2,767	0	2,440	0	110	1
15	123.66	8,101	-325	2,348	0	2,401	0	110	1
16	124.73	8,626	525	2,791	0	2,416	0	110	0

Day	Elev	Storage (Acre-Feet) in Lake	Storage (Acre-Feet) Change	Computed * Inflow C.F.S.	Release - C.F.S. Folsom South	Release - C.F.S. Power	Release - C.F.S. Spill	Release - C.F.S. Hatchery	Evap. - C.F.S. (1)
17	124.91	8,716	90	2,562	0	2,407	0	110	0
18	123.13	7,852	-864	2,068	0	2,394	0	110	0
19	123.55	8,050	198	2,614	0	2,404	0	110	0
20	123.98	8,252	202	2,642	0	2,430	0	110	0
21	124.12	8,321	69	2,564	0	2,418	0	110	1
22	123.78	8,158	-163	2,457	0	2,428	0	110	1
23	124.00	8,261	103	4,234	15	3,669	387	110	1
24	123.69	8,115	-146	4,954	30	4,401	487	110	0
25	122.76	7,683	-432	4,824	41	4,404	487	110	0
26	123.25	7,909	226	5,034	50	3,603	1,157	110	0
27	123.13	7,852	-57	4,413	50	4,004	277	110	1
28	123.18	7,876	24	3,949	35	3,791	0	110	1
Totals	N/A	N/A	623	107,988	366	99,026	5,183	3,080	18
Acre-Feet	N/A	N/A	623	214,194	726	196,418	10,280	6,109	36

\* Computed inflow is sum of change in storage, releases, and evaporation.  
(1) Evaporation records taken from Folsom Pan.

Summary: Release (acre-feet)

Power	238,343
Spill	108,019
Folsom South Canal	371
Hatchery	6,764
Total Releases	353,497

Bureau of Reclamation  
 Historical Archive and Report Database

Table 11. March 2026 | Lake Natoma Daily Operations | Run Date: 03/18/2026

Day	Elev	Storage (Acre-Feet) in Lake	Storage (Acre-Feet) Change	Computed * Inflow C.F.S.	Release - C.F.S. Folsom South	Release - C.F.S. Power	Release - C.F.S. Spill	Release - C.F.S. Hatchery	Evap. - C.F.S. (1)
N/A	N/A	7,876	N/A	N/A	N/A	N/A	N/A	N/A	N/A
1	123.15	7,862	-14	3,402	10	3,288	0	110	1
2	123.33	7,946	84	2,909	0	2,756	0	110	1
3	123.53	8,040	94	2,413	0	2,255	0	110	1
4	123.47	8,012	-28	1,901	0	1,637	166	110	2
5	124.07	8,296	284	1,661	0	1,437	0	78	3
6	123.66	8,101	-195	1,419	0	1,130	345	40	2
7	123.29	7,927	-174	1,447	0	1,139	354	40	2
8	123.70	8,120	193	1,567	0	957	471	40	2
9	123.10	7,838	-282	1,971	0	1,298	773	40	2
10	122.55	7,589	-249	2,370	0	2,454	0	40	2
11	123.46	8,007	418	2,707	1	2,453	0	40	2
12	123.04	7,810	-197	2,399	25	1,820	611	40	2
13	123.18	7,876	66	2,522	50	2,175	222	40	2
14	122.65	7,634	-242	2,326	50	1,727	629	40	2
15	123.14	7,857	223	2,609	45	1,857	553	40	2
16	123.33	7,946	89	2,516	30	2,399	0	40	2

Day	Elev	Storage (Acre-Feet) in Lake	Storage (Acre-Feet) Change	Computed * Inflow C.F.S.	Release - C.F.S. Folsom South	Release - C.F.S. Power	Release - C.F.S. Spill	Release - C.F.S. Hatchery	Evap. - C.F.S. (1)
17	123.05	7,815	-131	2,427	30	2,421	0	40	2
Totals	N/A	N/A	-61	38,566	241	33,203	4,124	998	32
Acre-Feet	N/A	N/A	-61	76,496	478	65,858	8,180	1,980	63

\* Computed inflow is sum of change in storage, releases, and evaporation.  
(1) Evaporation records taken from Folsom Pan.

Summary: Release (acre-feet)

Power 65,858  
Spill 8,180  
Folsom South Canal 478  
Hatchery 1,980  
Total Releases 76,496

Table 12. Isobath 02/01–02/16 (Mean Daily Temperature, Release, Storage, Unit Shutter Position/Load Percentage)

MDT = Mean Daily Temperature (°F)

USP/LP = Unit Shutter Position/Load Percentage

Date	MDT, Water NFA	MDT, Water ARP	MDT, Water AFD <sup>1</sup>	MDT, Water AFO	MDT, Water AWP	MDT, Water AWB	MDT, Air CSU	Release (CFS) Nimbus	Storage (TAF) Folsom	USP/LP Unit 1	USP/LP Unit 2	USP/LP Unit 3
Feb	47.3	45.6	49.3	49.7	50.3	50.7	51.9	3832	N/A	N/A	N/A	N/A
03/01	49.5	47.4	48.3	49.5	50.7	51.5	59.3	3398	660	T1	T59	T40
03/02	49.1	47.9	48.6	49.5	50.5	51.3	56.3	2866	675	T2	T57	T41
03/03	48.7	47.9	48.5	49.7	51.0	51.8	56.4	2365	687	T28	T52	T19
03/04	48.8	47.8	48.5	50.1	51.4	52.1	57.7	1913	698	T23	T1	T76
03/05	48.7	47.3	49.0	50.4	51.6	52.4	55.0	1515	707	T31	T1	T68
03/06	48.1	47.1	49.1	50.4	51.8	52.7	56.9	1515	716	T30	T1	T69
03/07	48.0	46.8	49.3	51.0	52.3	53.3	60.8	1533	724	T26	T1	T72
03/08	48.6	47.0	48.1	51.1	53.2	54.3	60.0	1468	731	T28	T1	T71
03/09	49.8	46.9	49.0	51.0	52.8	54.4	61.1	2111	737	T21	T36	T43
03/10	50.7	47.4	48.9	51.1	52.6	53.7	58.0	2494	743	T21	T43	T36
03/11	51.1	47.9	49.0	50.6	52.0	53.1	58.3	2493	747	T43	T1	T57
03/12	51.3	48.6	48.9	50.5	52.0	53.0	61.0	2471	751	T32	T1	T67
03/13	51.6	48.7	48.9	50.5	51.9	53.1	60.6	2437	755	T47	T1	T53
03/14	51.9	49.1	48.9	50.7	52.2	53.3	62.2	2396	759	T48	T1	T52
03/15	52.5	50.0	48.9	50.9	52.4	53.6	66.1	2450	762	T47	T1	T52
03/16	53.4	49.9	49.0	50.8	52.6	53.9	65.5	2439	765	A49	A1	A50
Mar	50.1	48.0	48.8	50.5	51.9	53.0	59.7	2242	N/A	N/A	N/A	N/A

Date	MDT, Water NFA	MDT, Water ARP	MDT, Water AFD <sup>1</sup>	MDT, Water AFO	MDT, Water AWP	MDT Water AWB	MDT, Air CSU	Release (CFS) Nimbus	Storage (TAF) Folsom	USP/LP Unit 1	USP/ LP Unit 2	USP/LP Unit 3
N/A	N/A	N/A	N/A	N/A	N/A	N/A	Total AF	71135	N/A	N/A	N/A	N/A

Legend:

? = 1-9 hours of data missing

! = 10 or more hours of data missing

# = Station out of service

X = Exceedances

**Monthly Averages**

A = All Shutters Lowered

T = Top Shutter Raised

M = Middle Shutter Raised

B = Bottom Shutter Raised

O = Unit Outage

Notes:

<sup>1</sup> AFD is a weighted average based on hourly flow values including generation, bypass, and spill.

### American River Daily Average Water and Air Temperature March 2026

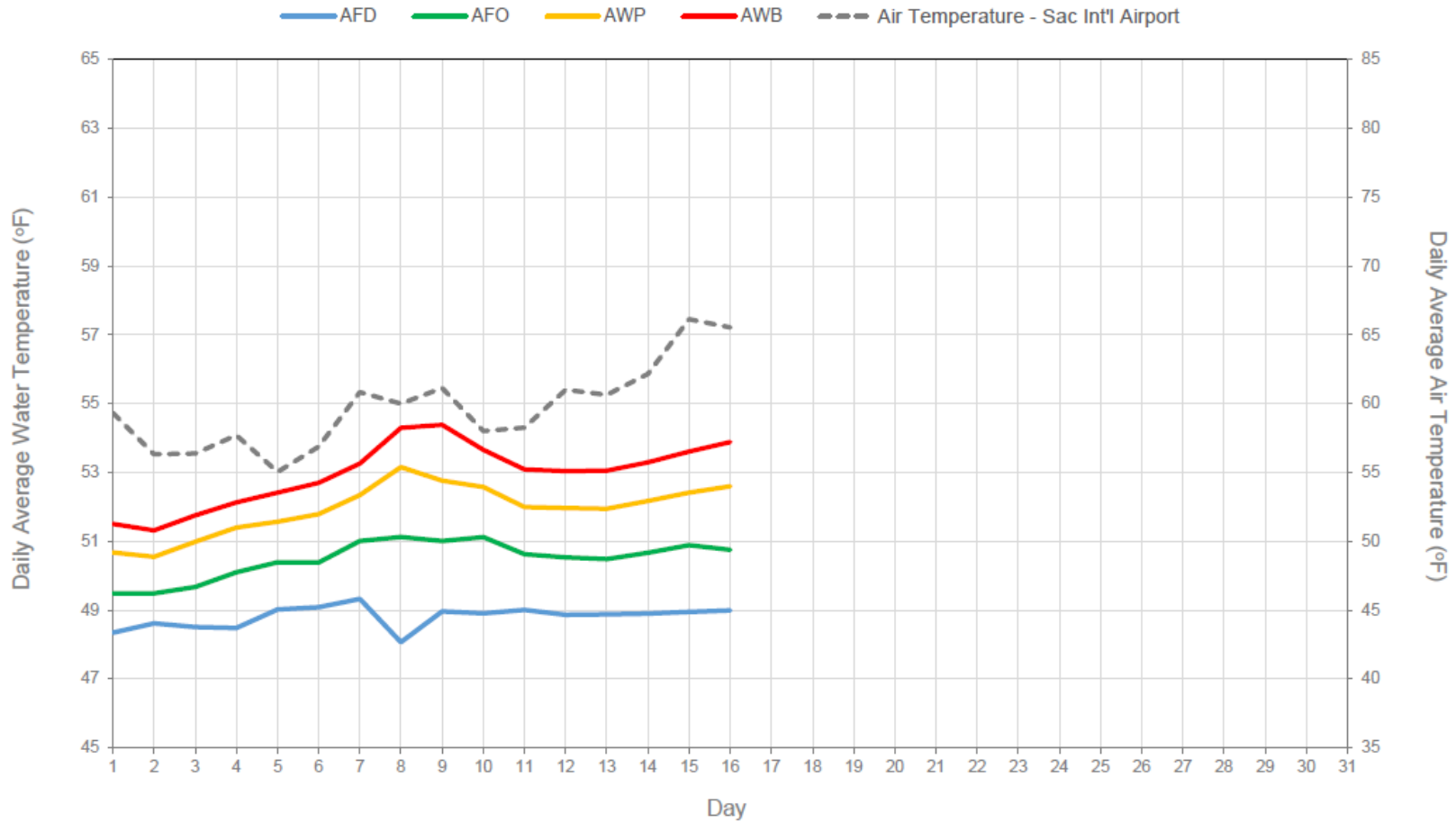


Figure 11. American River Daily Average Water and Air Temperatures

Figure 11 is a line graph comparing daily average water and air temperatures for days of the month (generalized). Temperatures from the AFD sensor is shown in light blue, AFO sensor in orange, AWP in green, AWB in red, and Sacramento International Airport in dotted gray. The target is indicated with a dotted red line.

### Folsom Lake Isothermobaths Plot - 2025

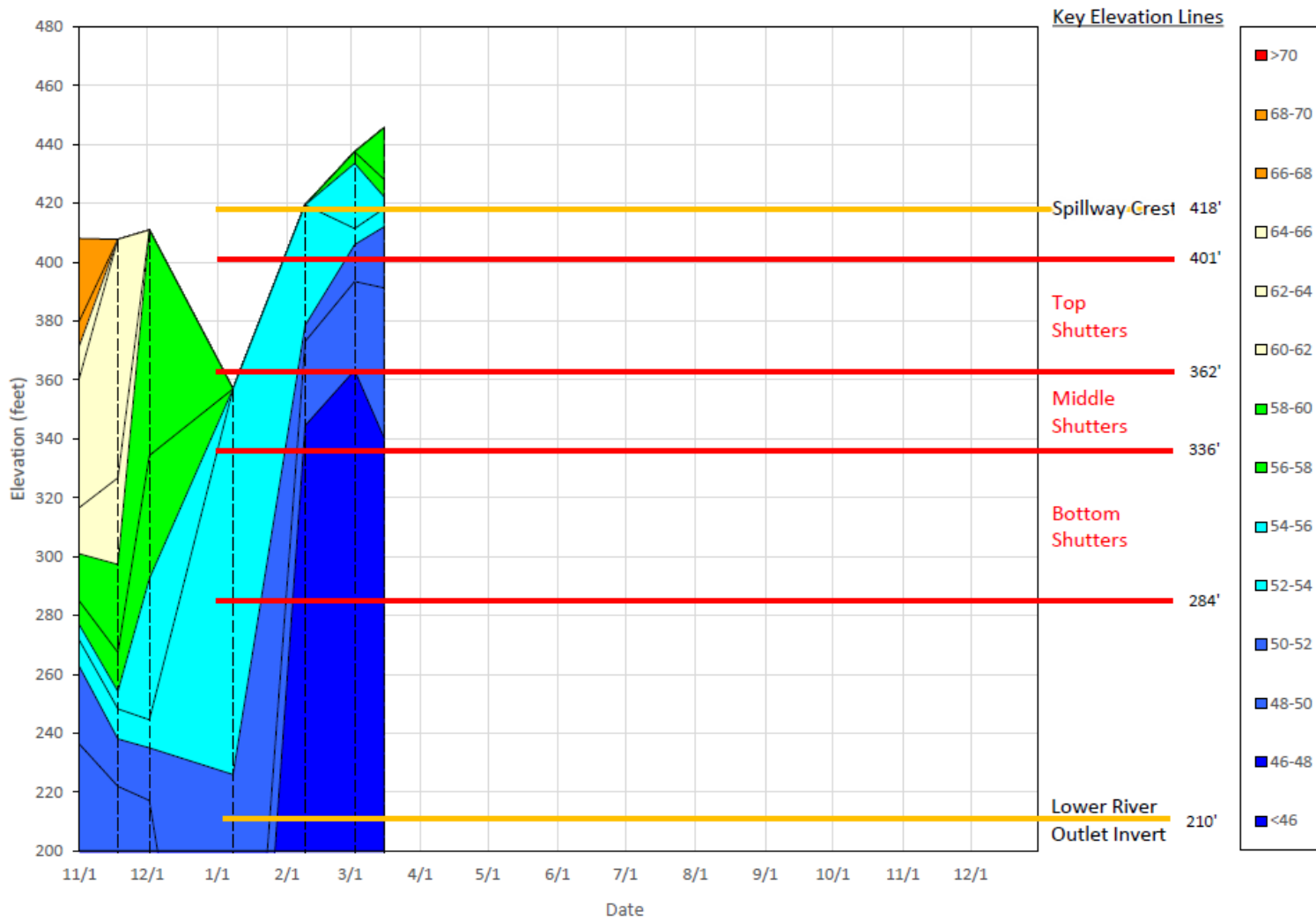
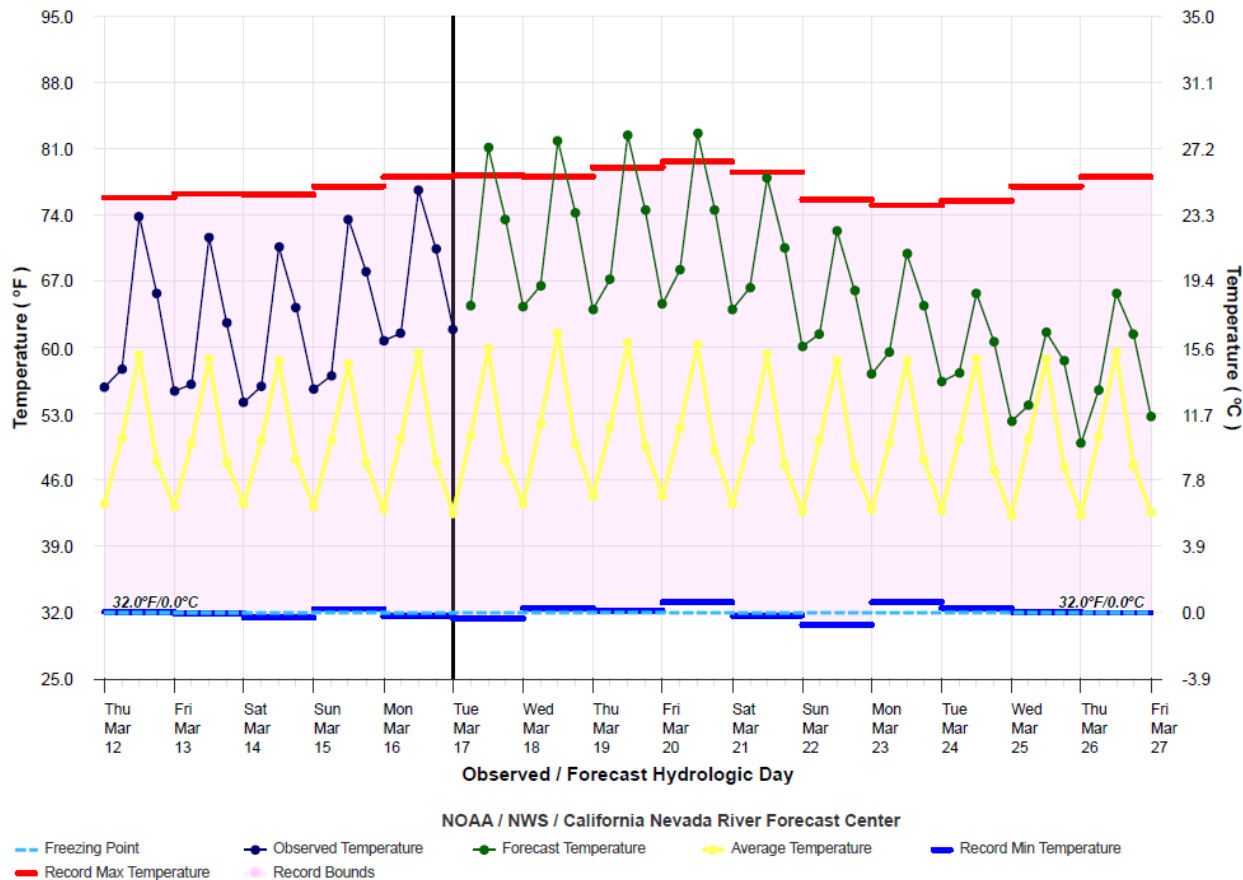


Figure 12. Isobath Plot 11/01 – 03/01

Figure 12 is an isobath Plot for November 2025 –March 2026 showing Spillway Crest, Top Shuttters, Middle Shuttters, Bottom Shuttlers, and Lower River Outlet Invert.

American River - Folsom Lake (FOLC1LOF)  
 Temperature : Local Total Basin - All Elevations  
 Graphic Created: 03/17/2026 at 9:00 AM PDT

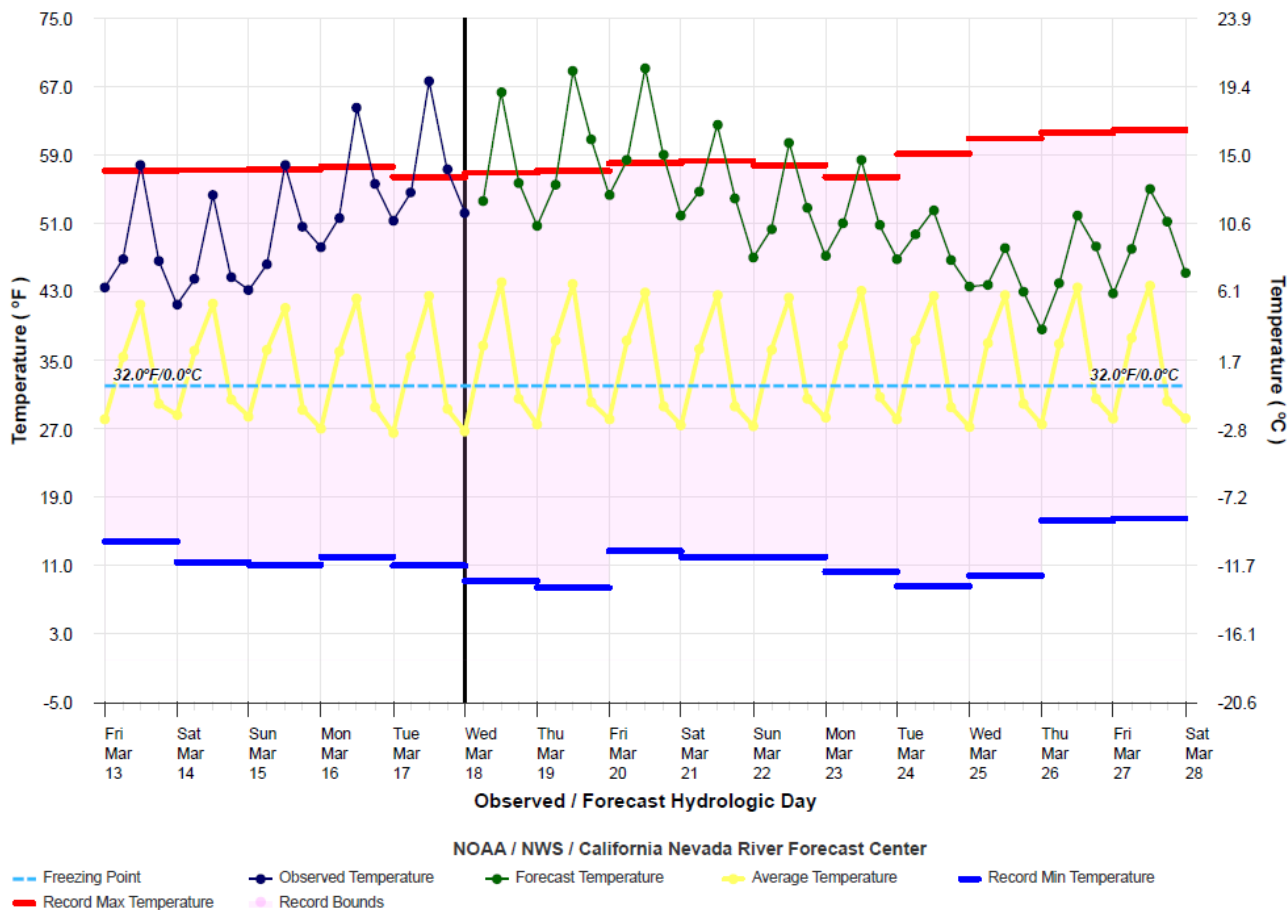


NOTE: Observed, Forecast, and Average Temperatures are 6-Hour averages ending at specified time.

Figure 13. American River – Folsom Lake (FOLC1LOF) Temperature

Figure 13 is a line graph showing observed, forecast, and average air temperatures for the American River at Folsom Lake (FOLC1LOF) for mid-March 2026, along with record maximum and minimum temperatures and record bounds. Observed temperatures are shown in dark blue, forecast temperatures in green, average temperatures in yellow, record maximum temperatures in red, record minimum temperatures in blue, and the freezing point indicated with a dashed light blue line.

Rubicon River - Hell Hole Reservoir (HLLC1LUF)  
 Temperature : Local Upper Basin - Elevations Above 5000 Feet  
 Graphic Created: 03/18/2026 at 9:00 AM PDT



NOTE: Observed, Forecast, and Average Temperatures are 6-Hour averages ending at specified time.

Figure 14. Rubicon River – Hell Hole Reservoir (HLLC1LUF) Temperature

Figure 14 is a line graph showing observed, forecast, and average air temperatures for the Rubicon River at Hell Hole Reservoir (HLLC1LUF) for mid- to late March 2026, along with record maximum and minimum temperatures and record bounds. Observed temperatures are shown in dark blue, forecast temperatures in green, average temperatures in yellow, record maximum temperatures in red, record minimum temperatures in blue, and the freezing point indicated with a dashed light blue line.

Table 13. American River Baseflow Table – WY 2026

Month	Index Used for Index-based MRR	Flood Mgmt (TAF) <sup>1</sup>	ARI or SRI	Index Based MRR (cfs)	RDPB-based MRR for fall-run Chinook salmon (applicable in Jan and Feb)	RDPB-based MRR for steelhead (applicable Feb to May)	Controlling MRR (cfs)	Actual Average Monthly Nimbus releases <sup>2</sup> (cfs)
October	May ARI <sup>3</sup> (50% exceedance)	0	1,614	992	N/A	N/A	992	1,079
November	May ARI <sup>3</sup> (50% exceedance)	0	1,614	992	N/A	N/A	992	1,071
December	May ARI <sup>3</sup> (50% exceedance)	159	1,614	992	N/A	N/A	992	3,638
January	Jan SRI (90% exceedance)	445	1,614 (SRI)	992	992	N/A	992	5,743
February	Feb ARI (90% exceedance)	515	915	673	694	635	694	3,9614
March	March ARI (90% exceedance)	558 <sup>4</sup>	1,265	1,063	N/A	635	1,063	2,254 <sup>4</sup>
April	April ARI (90% exceedance)	N/A	N/A	N/A	N/A	N/A	N/A	N/A
May	May ARI (90% exceedance)	N/A	N/A	N/A	N/A	N/A	N/A	N/A
June	May ARI <sup>3</sup> (90% exceedance)	N/A	N/A	N/A	N/A	N/A	N/A	N/A
July	May ARI <sup>3</sup> (90% exceedance)	N/A	N/A	N/A	N/A	N/A	N/A	N/A
August	May ARI <sup>3</sup> (90% exceedance)	N/A	N/A	N/A	N/A	N/A	N/A	N/A
September	May ARI <sup>3</sup> (90% exceedance)	N/A	N/A	N/A	N/A	N/A	N/A	N/A

Table 14. American River Baseflow Table – WY 2027

Month	Index Used for Index-based MRR	Flood Mgmt (TAF) <sup>1</sup>	ARI or SRI	Index Based MRR (cfs)	RDPB-based MRR for fall-run Chinook salmon (applicable in Jan and Feb)	RDPB-based MRR for steelhead (applicable Feb to May)	Controlling MRR (cfs)	Actual Average Monthly Nimbus releases <sup>2</sup> (cfs)
October	May ARI <sup>3</sup> (90% exceedance)	N/A	N/A	N/A	N/A	N/A	N/A	N/A
November	May ARI <sup>3</sup> (90% exceedance)	N/A	N/A	N/A	N/A	N/A	N/A	N/A
December	May ARI <sup>3</sup> (90% exceedance)	N/A	N/A	N/A	N/A	N/A	N/A	N/A

1 Cumulative flood management release

2 Average of daily releases over the month from sum of Power, Spill, and Hatchery flows [DailyOperationsNAT](#)

3 B120 Forecasts are usually provided January through May. The May ARI would also be used for June-September of the current water year and October through December of the next water year unless there is an update to the ARI after May.

4 Accumulated spill/release as of 3/18/26

90% exceedance starting January 2025 (2024 ROD)

MRR=Minimum Release Requirement  
 RDPA=Redd Dewatering Protective Adjustment  
 ARI=American River Index  
 SRI=Sacramento River Index  
 N/A = Not Applicable

## Draft March 2026 Outlook

### 50% Inflow/Runoff Exceedance Hydrology

Table 15. Federal End of the Month Storage/Elevation (TAF/Feet)

Facility	Feb	Mar	Apr	May	Jun	Jul	Aug	Sep	Oct	Nov	Dec	Jan	Feb
Folsom Storage	644	754	854	964	960	675	517	466	424	397	387	432	542
Folsom Elevation	N/A	445	455	465	465	437	419	412	406	403	401	408	422

Table 16. Monthly River Release (TAF/cfs)

Facility	Feb	Mar	Apr	May	Jun	Jul	Aug	Sep	Oct	Nov	Dec	Jan	Feb
Cumulative (TAF)	N/A	246	172	111	131	367	242	119	123	119	123	108	122
Average Flow (cfs)	N/A	4000	2889	1800	2200	5968	3936	2003	2000	2006	2000	1750	2200

### 90% Inflow/Runoff Exceedance Hydrology

Table 17. Federal End of the Month Storage/Elevation (TAF/Feet)

Facility	Feb	Mar	Apr	May	Jun	Jul	Aug	Sep	Oct	Nov	Dec	Jan	Feb
Folsom (TAF)	644	822	745	724	681	480	340	295	287	280	284	297	356
Folsom Elevation	N/A	452	444	442	437	414	394	386	385	383	384	387	396

Table 18. Monthly River Release (TAF/cfs)

Facility	Feb	Mar	Apr	May	Jun	Jul	Aug	Sep	Oct	Nov	Dec	Jan	Feb
American (TAF)	N/A	154	210	118	104	248	199	90	49	50	49	49	44
American (cfs)	N/A	2500	3533	1916	1742	4033	3243	1508	800	847	800	800	800



# Lower American River Monitoring

## Dissolved Oxygen Monitoring

Below is a summary of dissolved oxygen and temperature in the American River in relation to flow since the previous ARG meeting. The next logger download is scheduled for March 27.

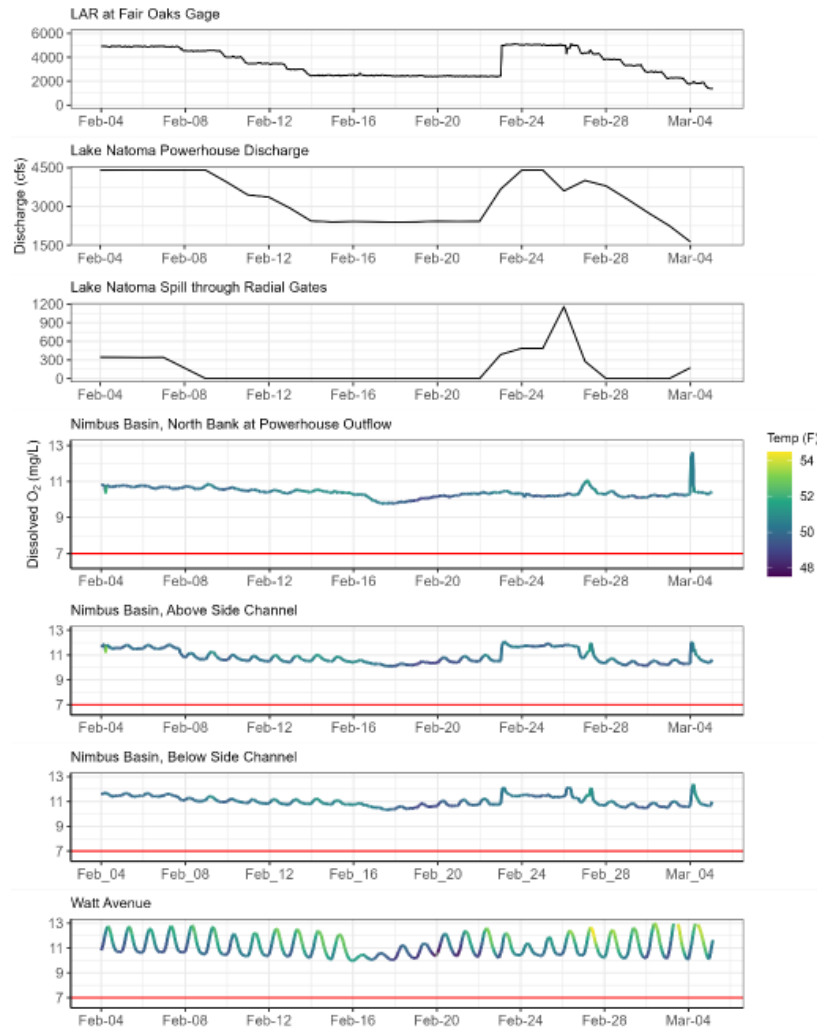


Figure 15. Discharge, temperature and dissolved oxygen dynamics at various locations in the Lower American River during the time when DO transects were conducted.

Figure 15 presents a series of line graphs showing discharge and dissolved oxygen (DO) conditions along the Lower American River from early February through early March 2026. Panels include LAR discharge at the Fair Oaks gage, Lake Natoma powerhouse discharge, spill through radial gates, and DO concentrations at multiple Nimbus Basin monitoring locations (north bank at powerhouse outflow, above side channel, below side channel, and Watt Avenue). Water temperature is indicated by color along the DO traces.

Flows at Fair Oaks decline through mid-February before increasing briefly in late February with higher powerhouse releases and spill through radial gates. Dissolved oxygen levels across Nimbus Basin remain stable and above the 7 mg/L threshold, with regular daily fluctuations observed at downstream monitoring locations.

## Snorkel Surveys

Snorkel surveys were conducted the week of February 23 in several locations in the lower reaches of the river as part of Water Forum's WaterSmart restoration grant. Locations surveyed are shown in the map below.

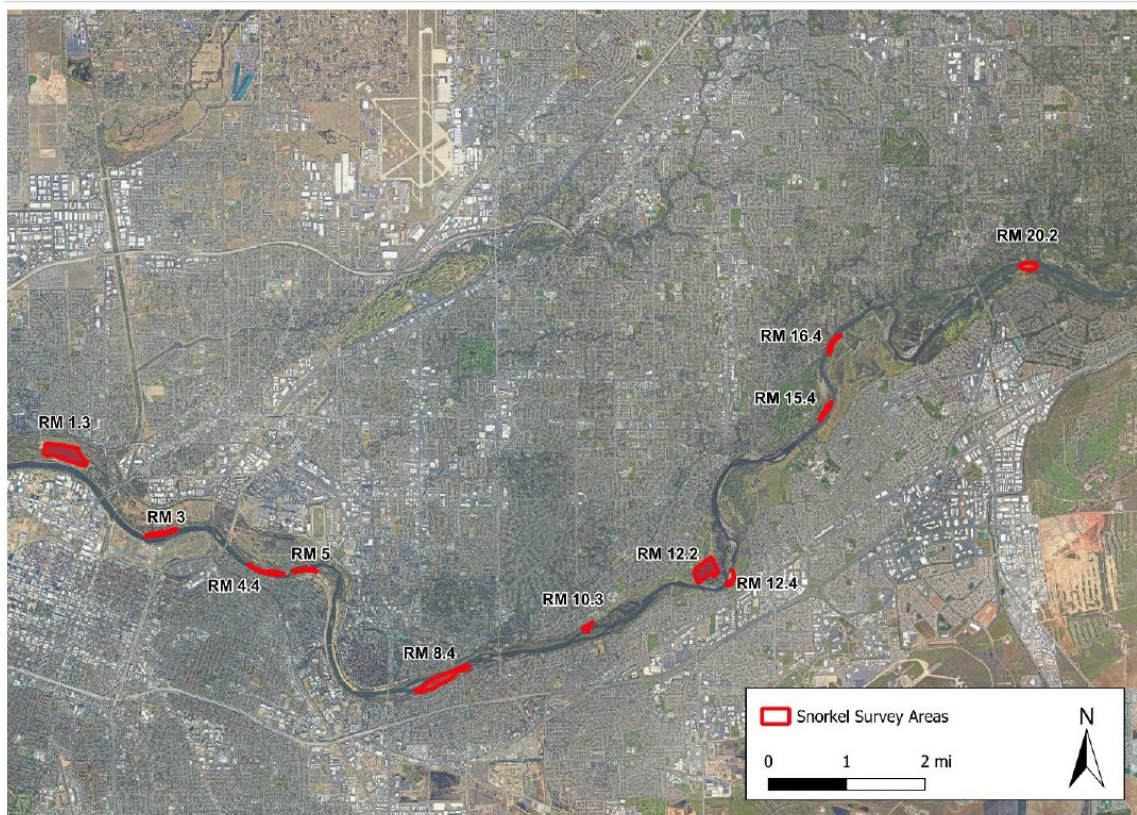


Figure 16. Map showing locations of snorkel surveys on the Lower American River.

Figure 16 shows an aerial map of the Lower American River corridor through the Sacramento metropolitan area identifying snorkel survey locations distributed along the river channel. Survey reaches are highlighted in red and labeled by river mile, including sites at RM 1.3, RM 3, RM 4.4, RM 5, RM 8.4, RM 10.3, RM 12.2, RM 12.4, RM 15.4, RM 16.4, and RM 20.2.



## Steelhead Spawning and Stranding Surveys

### ***Steelhead redd counts through March 5, 2026***

Table 19. Steelhead and Chinook salmon redd counts during the 2026 steelhead spawning surveys. Only new, freshly built redds with clean rocks and no algae colonization are included in table.

<b>Dates</b>	<b>Steelhead</b>	<b>Chinook</b>	<b>Unknown<sup>1</sup></b>	<b>Total</b>
Jan 20 - 22	9	1	0	10
Feb 3 - 4	15	0	1	16
Feb 18 - 20	9	0	0	9
Mar 3 - 5	1	0	0	1
Total	34	1	1	36

<sup>1</sup> Redd measurements unable to be collected due to depth, thus remained classified as 'unknown'

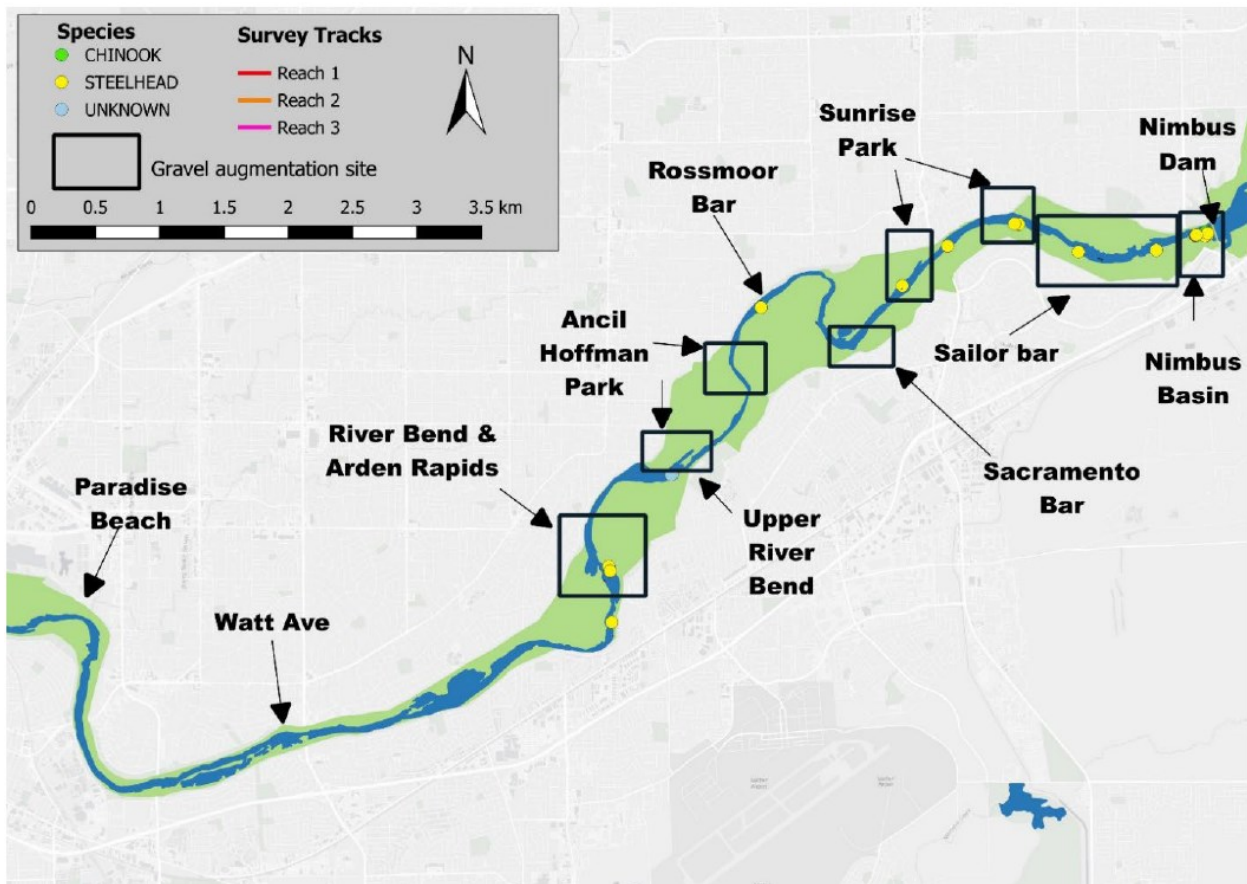


Figure 17. Locations of new redds identified during the 7 January through 5 March 2026 steelhead spawning surveys along the Lower American River. The gravel augmentation boxes represent general areas where gravel augmentation has occurred.

Figure 17 shows survey reaches and fish tracking locations along the Lower American River between Nimbus Dam and Paradise Beach. Colored lines represent survey tracks for three river reaches, while colored points indicate detections of Chinook, steelhead, and unidentified fish. Boxes identify gravel augmentation sites at locations including Rossmoor Bar, Sunrise Park, Sailor Bar, Sacramento Bar, Upper River Bend, and other restoration areas. The map provides spatial context for fish monitoring and habitat restoration activities along the river corridor.

Spawning surveys are being conducted this week (March 17-19).

## Stranding surveys through March 5, 2026

Table 20. Salmonids and environmental conditions in isolated pools observed through 5 March 2026.

Location (river mile)	Date	Chinook	Steelhead	Unidentified Salmonids	Total Pool Area (m <sup>2</sup> )	Density (# fish/m <sup>2</sup> )	Temp (°C)	Dissolved Oxygen (mg/L)
Paradise Beach (5)	1/20/2026	20 *	0	0	NA	NA	NA	NA
Paradise Beach (5)	1/22/2026	141	0	0	167	0.84	11.9	12.2
Paradise Beach (5) <sup>1</sup>	1/22/2026	NA	NA	NA	402	NA	11.3	11.6
Paradise Beach (5) <sup>1</sup>	1/29/2026	69	0	0	9	7.8	8.4	4.1
Sailor Bar (22)	2/20/2026	113	0	0	32	3	7.1	10.8
Sailor Bar (22)	2/20/2026	61	0	0	31	2	7.8	8.1
Sailor Bar (22)	2/20/2026	102	0	0	86	1	10.4	9.2
Lower Sunrise (19)	2/20/2026	927	0	0	41	22	11.7	8.9
Lower Sunrise (19)	3/3/2026	185	0	0	45	4	15.4	8.13

Location (river mile)	Date	Chinook	Steelhead	Unidentified Salmonids	Total Pool Area (m <sup>2</sup> )	Density (# fish/m <sup>2</sup> )	Temp (°C)	Dissolved Oxygen (mg/L)
Below River Bend side channel (13)	3/4/2026	113	0	0	105	1	17.7	11.87
Below River Bend (12)	3/4/2026	83	0	0	34	2	14.5	11.35
TOTAL	N/A	1814	0	0	NA	N/A	N/A	N/A

\* Mortalities due to pool desiccation.

<sup>1</sup> Pool revisited to perform rescues



Figure 18. Location of the stranding pools observed on the Lower American River through 5 March 2026. Approximately 20 Chinook Salmon during 19 January surveys were mortalities (yellow point).

Figure 18 presents a series of aerial map panels showing isolated pools containing stranded salmonids at several locations along the Lower American River, including Sailor Bar, Lower Sunrise, Below River Bend Side Channel, Below River Bend, and Paradise Beach. Colored boxes identify the locations of isolated pools observed during site visits on January 19, February 16, and March 2 under varying flow conditions ranging from approximately 11,500 to 1,400 cubic feet per second. Mortality was observed at selected Paradise Beach locations during the January 19 survey. Scale bars and north arrows are provided for each panel to indicate distance and orientation.