



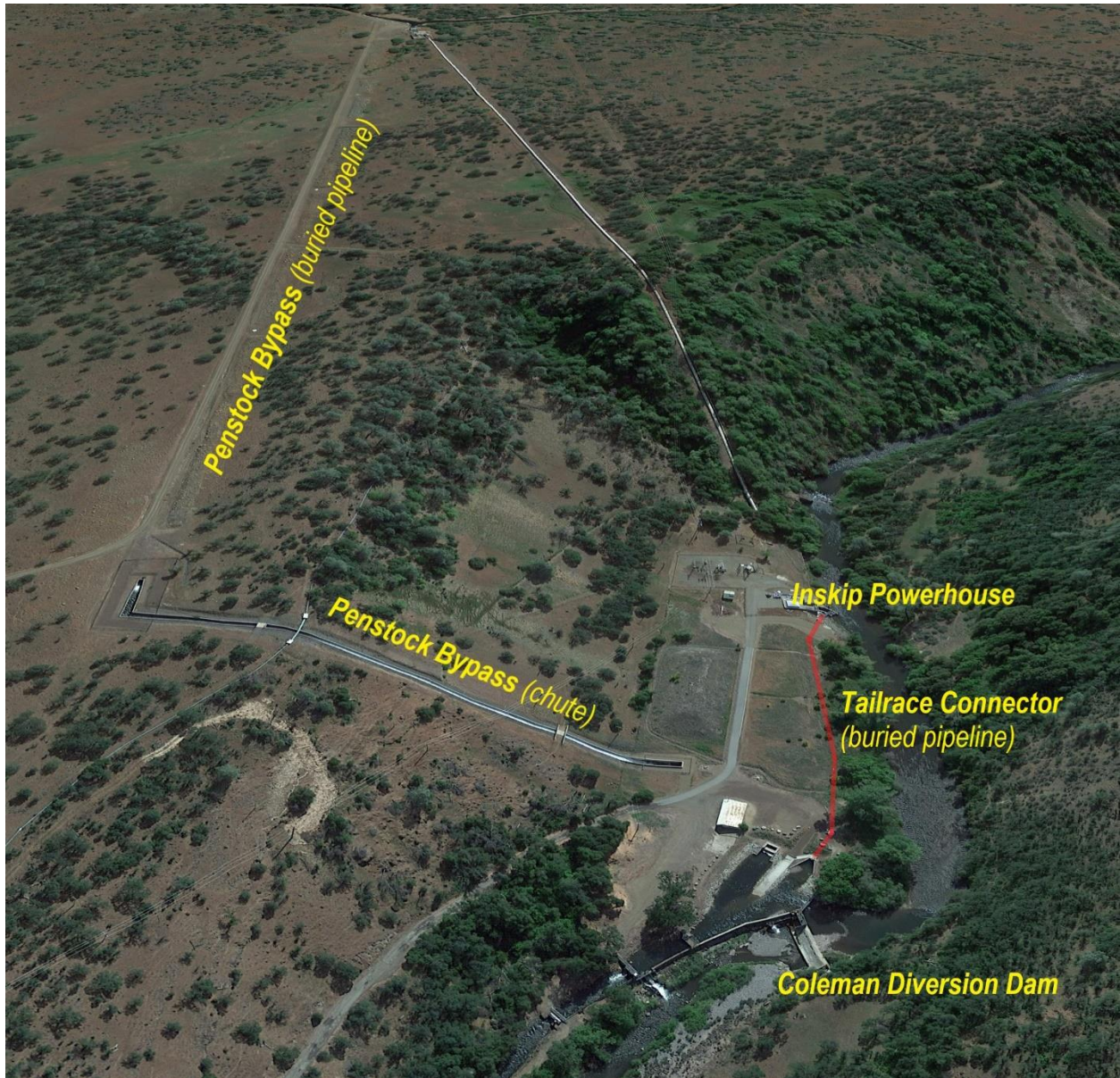
— BUREAU OF —
RECLAMATION

Battle Creek Salmon and Steelhead Restoration Project

Phase 1B: Inskip Powerhouse – Coleman Diversion Dam



Before construction, ariel overview of the planned Inskip Powerhouse penstock bypass and tailrace connector, February 2007.



After construction, ariel overview of the constructed Inskip Powerhouse penstock bypass and tailrace connector, Google Earth Imagery April 28, 2021.



During construction photo looking upstream of Eagle Canyon Canal at the new Inskip Powerhouse penstock bypass intake structure (center left), August 2012.



After construction photo looking upstream of Eagle Canyon Canal at the new Inskip Powerhouse penstock bypass intake structure (center left), September 2016.



During construction photo of the Inskip Powerhouse penstock bypass, the 66-inch diameter buried concrete pipeline section, April 2012.



Before (left photo, January 2011) and after (right photo, March 2013) construction, uphill view of the new Inskip Powerhouse penstock bypass at the chute section.



During construction photo of the new Inskip Powerhouse tailrace connector inlet structure (center) and the 84-inch buried pipeline (center bottom), October 2012.



After construction photo of the new Inskip Powerhouse tailrace connector inlet structure (center right) and the 84-inch buried pipeline, November 2015.