

RECLAMATION

Managing Water in the West

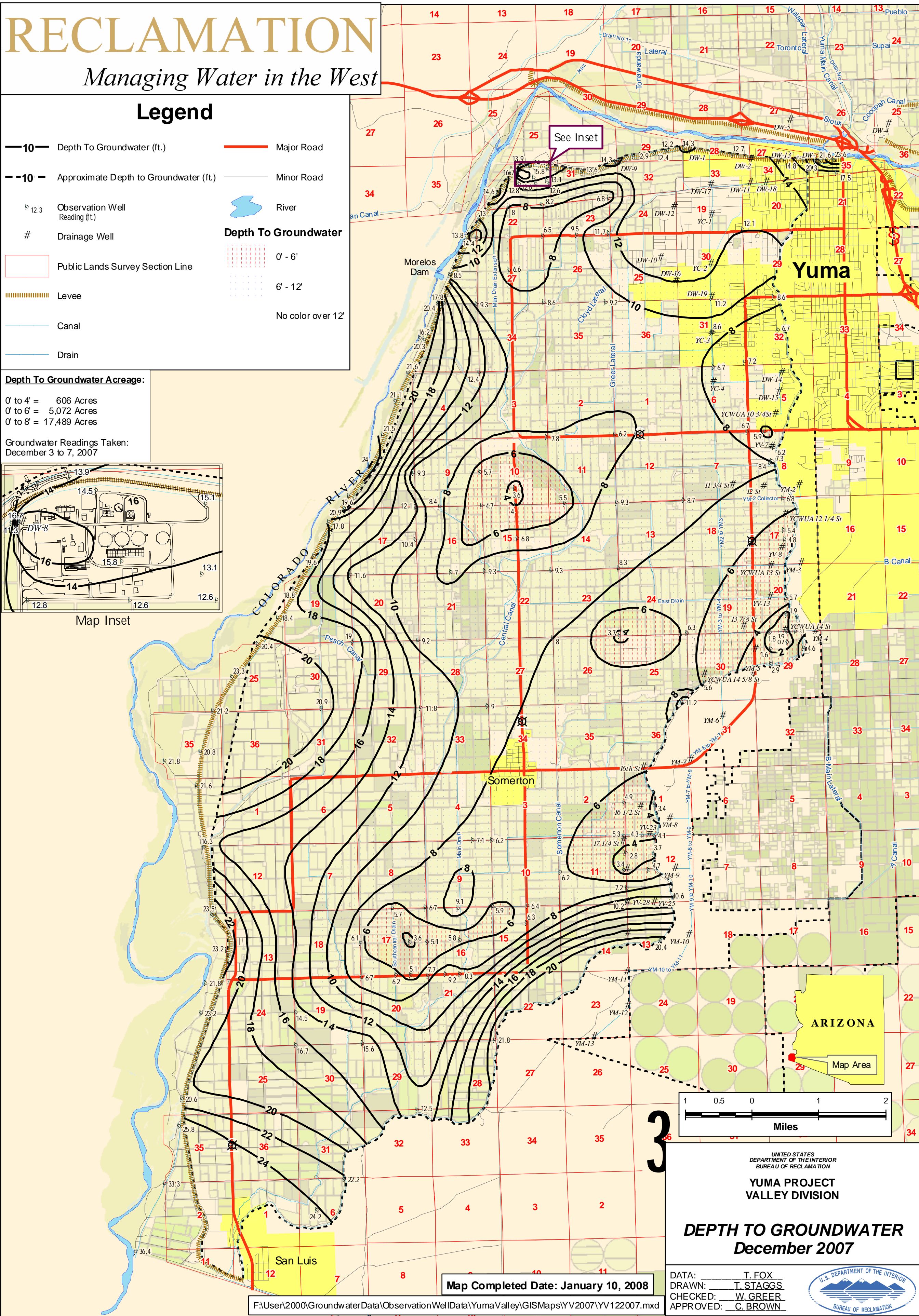
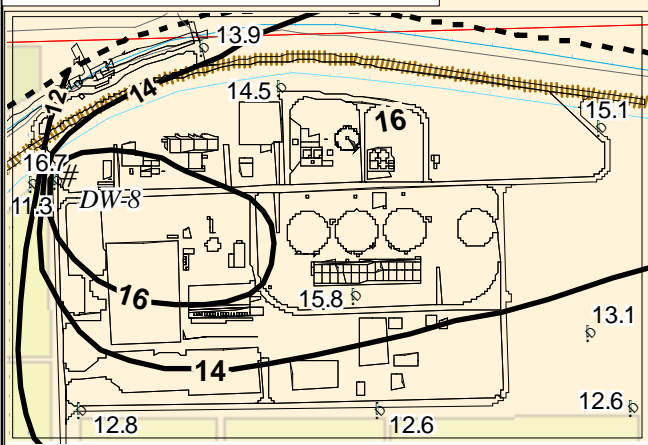
Legend

- 10 Depth To Groundwater (ft.)
- 10 Approximate Depth to Groundwater (ft.)
- 12.3 Observation Well Reading (ft.)
- # Drainage Well
- Public Lands Survey Section Line
- Levee
- Canal
- Drain
- Major Road
- Minor Road
- River
- Depth To Groundwater**
- 0' - 6'
- 6' - 12'
- No color over 12'

Depth To Groundwater Acreage:

- 0' to 4' = 606 Acres
- 0' to 6' = 5,072 Acres
- 0' to 8' = 17,489 Acres

Groundwater Readings Taken:
December 3 to 7, 2007



UNITED STATES
DEPARTMENT OF THE INTERIOR
BUREAU OF RECLAMATION

**YUMA PROJECT
VALLEY DIVISION**

**DEPTH TO GROUNDWATER
December 2007**

DATA: T. FOX
DRAWN: T. STAGGS
CHECKED: W. GREER
APPROVED: C. BROWN



Map Completed Date: January 10, 2008

F:\User\2000\GroundwaterData\ObservationWellData\Yuma Valley\GISMaps\YV2007\YV122007.mxd