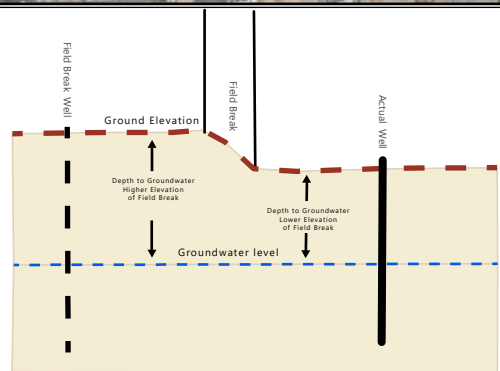
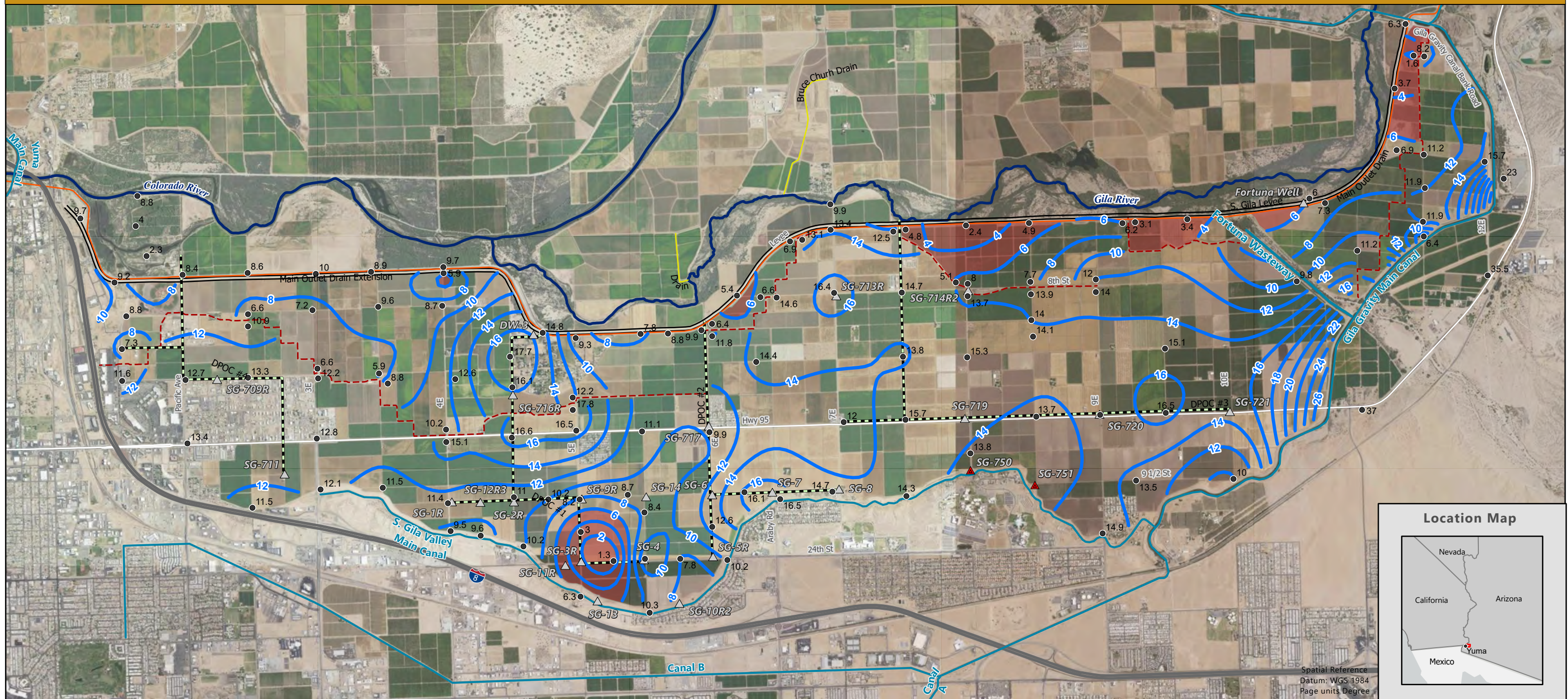




Depth to Groundwater South Gila Valley - June 2023



Field Breaks and Wells

Field break wells are used to help determine more accurate water table depths in areas where there are rapid changes in ground elevation.

These areas are referred to as field breaks and for this map, it is where ground elevations change by at least two feet within a distance of twenty feet.

When a well is close to a field break, a hypothetical field break well is created on the opposite side of the field break to provide water table depths on both sides.

When the actual well is within the field break, field break wells may be created on both sides.

An assumption is made that water table elevations within the close proximity of a well, 400 feet for this map, will vary by less than 1/10th of a foot.

Disclaimer

These data are being provided as a public record by the US Bureau of Reclamation (Reclamation). Reclamation makes no warranties, either expressed or implied, with respect to these data, their quality, or fitness for a particular purpose or use. Reclamation makes no warranty with respect to the accuracy of the data provided, and in no event will be liable for direct, indirect, consequential or incidental damages resulting from any inaccuracies in the data. The requestor should review and evaluate the data requested to determine their suitability of use for their activities.

Legend

- Depth to Groundwater From Land Surface Contour *
- Depth to Water From Land Surface 6-ft or less
- Drainage Ditch
- Levee Road
- Irrigation Canal
- Interstate Highway
- Field Break
- * Contour Interval = 2 Feet
- Drainage Well
- Supply Well
- Observation Well
- River
- Drainage Pump Outlet Channel
- Salinity Canal



Gila Project - Yuma Mesa Division South Gila Unit

0 0.5 1 Miles
Map Scale

Map Date: 7/25/2023
Map Author: LCB-YAO-GIS
Map No: LCB-YAO-2023-0023

Internal Map Review

Data: FC/LL GIS Map: BJ
Review/Approved: AS