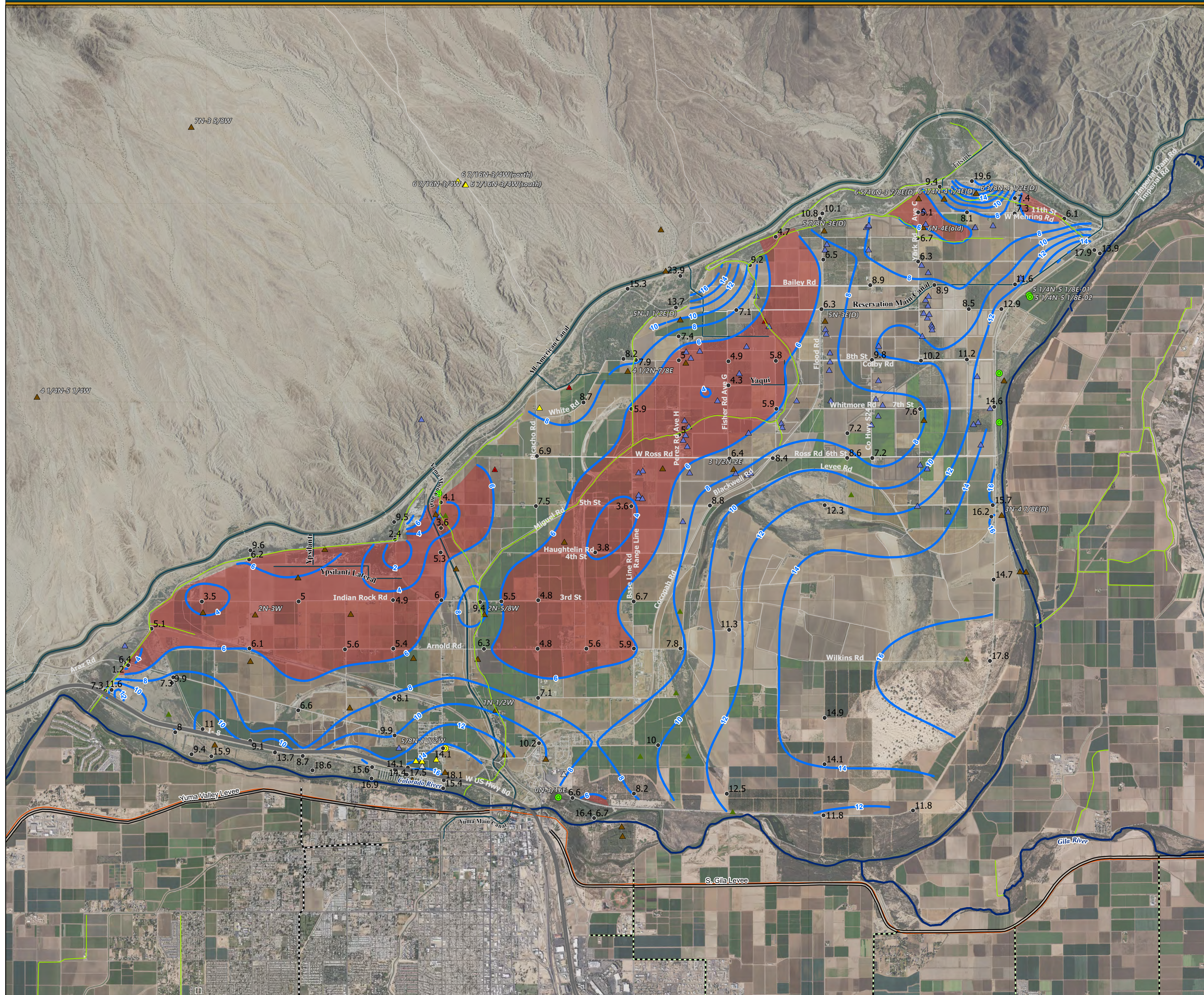




Depth to Groundwater
Reservation Division - June 2022

United States
Department of the Interior





- Depth to Groundwater From Land Surface Contour
- Depth to Water From Land Surface 6-ft or less
- Interstate Highway
- Irrigation Canal
- = Levee
- River


Type of Well


- Observation
- △ Drainage
- ▲ Exploration
- ▲ Industrial
- ▲ Irrigation
- ▲ Municipal
- PR Test
- Unknown
- ▲ Domestic

Drain

 DPOC

 Drain

 Salinity Canal

 Yuma Mesa Conduit

Map Date: 4/17/2023
Map Author: LCB-YAO-GIS
Map No: LCB-YAO-2022-1070

Disclaimer

These data are being provided as a public record by the US Bureau of Reclamation (Reclamation). Reclamation makes no warranties, either expressed or implied, with respect to these data, their quality, or fitness for a particular purpose or use. Reclamation makes no warranty with respect to the accuracy of the data provided, and in no event will be liable for direct, indirect, consequential or incidental damages resulting from any inaccuracies in the data. The requestor should review and evaluate the data requested to determine their suitability of use for their activities.

Reservation Division

Internal Map Review

Data: LL/FC/TS
GIS Map: BJ
Review/Approved: AS



Spatial Reference
Datum: WGS 1984
Page units Degree



Location Map

