

Restoration of the Salton Sea

Volume 2: Embankment Designs and Optimization Study

Appendix 2B: Seepage and Stability Analysis

Attachment A Generalized Subsurface Profiles

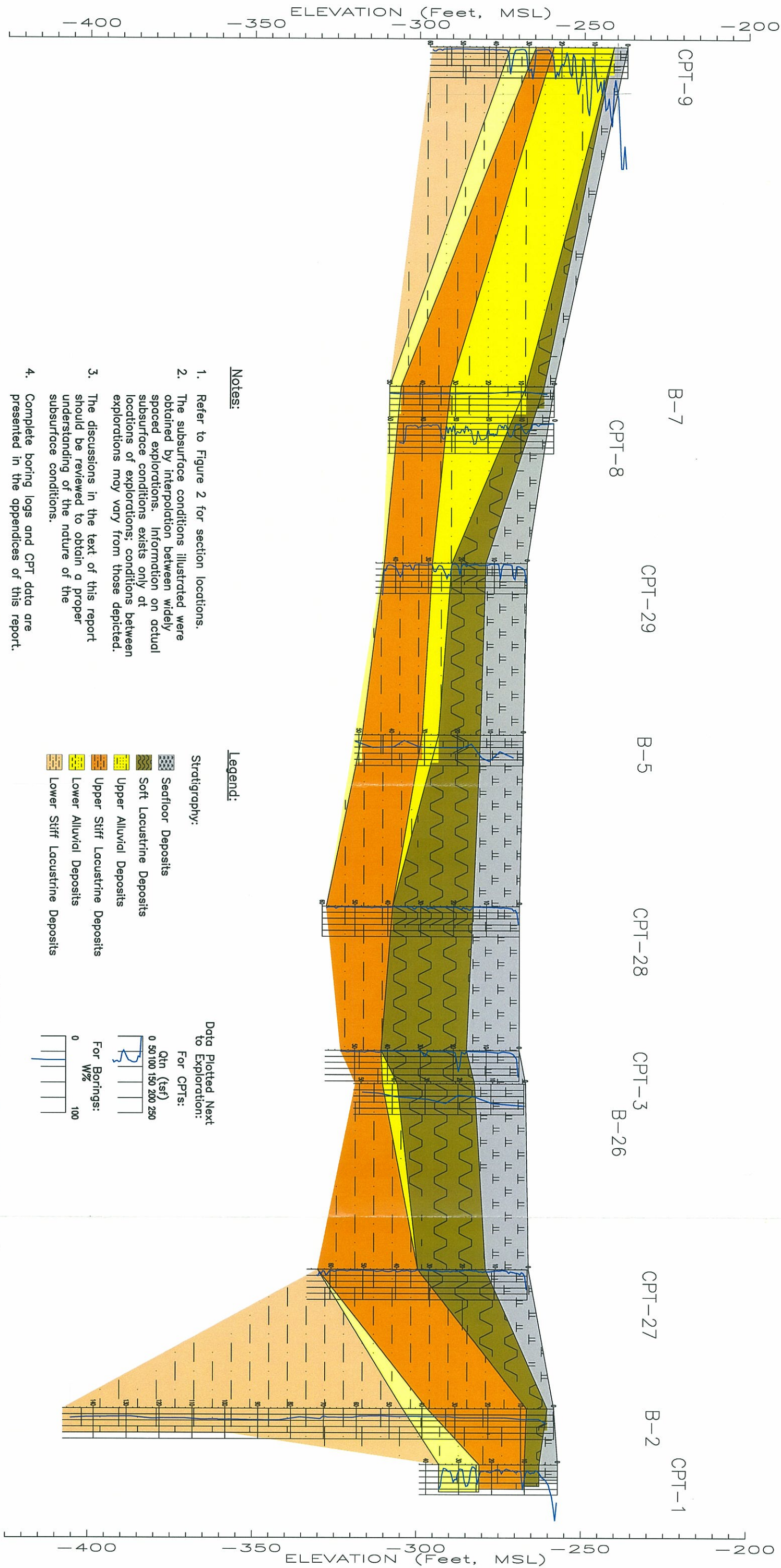
**Prepared for:
U.S. Department of the Interior
Bureau of Reclamation
Lower Colorado Region
Boulder City, Nevada**

**Prepared by:
Kleinfelder, Inc.
Golden, CO 80401
Project No. 71100**

May 2007

A
WEST

A'
EAST



Notes:

1. Refer to Figure 2 for section locations.
2. The subsurface conditions illustrated were obtained by interpolation between widely spaced explorations. Information on actual subsurface conditions exists only at locations of explorations; conditions between explorations may vary from those depicted.
3. The discussions in the text of this report should be reviewed to obtain a proper understanding of the nature of the subsurface conditions.
4. Complete boring logs and CPT data are presented in the appendices of this report.

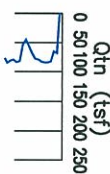
Legend:

Stratigraphy:

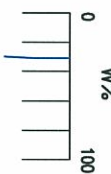
- Seafoor Deposits
- Soft Lacustrine Deposits
- Upper Alluvial Deposits
- Upper Stiff Lacustrine Deposits
- Lower Alluvial Deposits
- Lower Stiff Lacustrine Deposits

Data Plotted Next to Exploration:

For CPTs:



For Borings:



(VERTICAL SCALE = 100 X HORIZONTAL SCALE)

GEOLOGIC CROSS SECTION A-A'
SALTON SEA RESTORATION PROJECT

URS

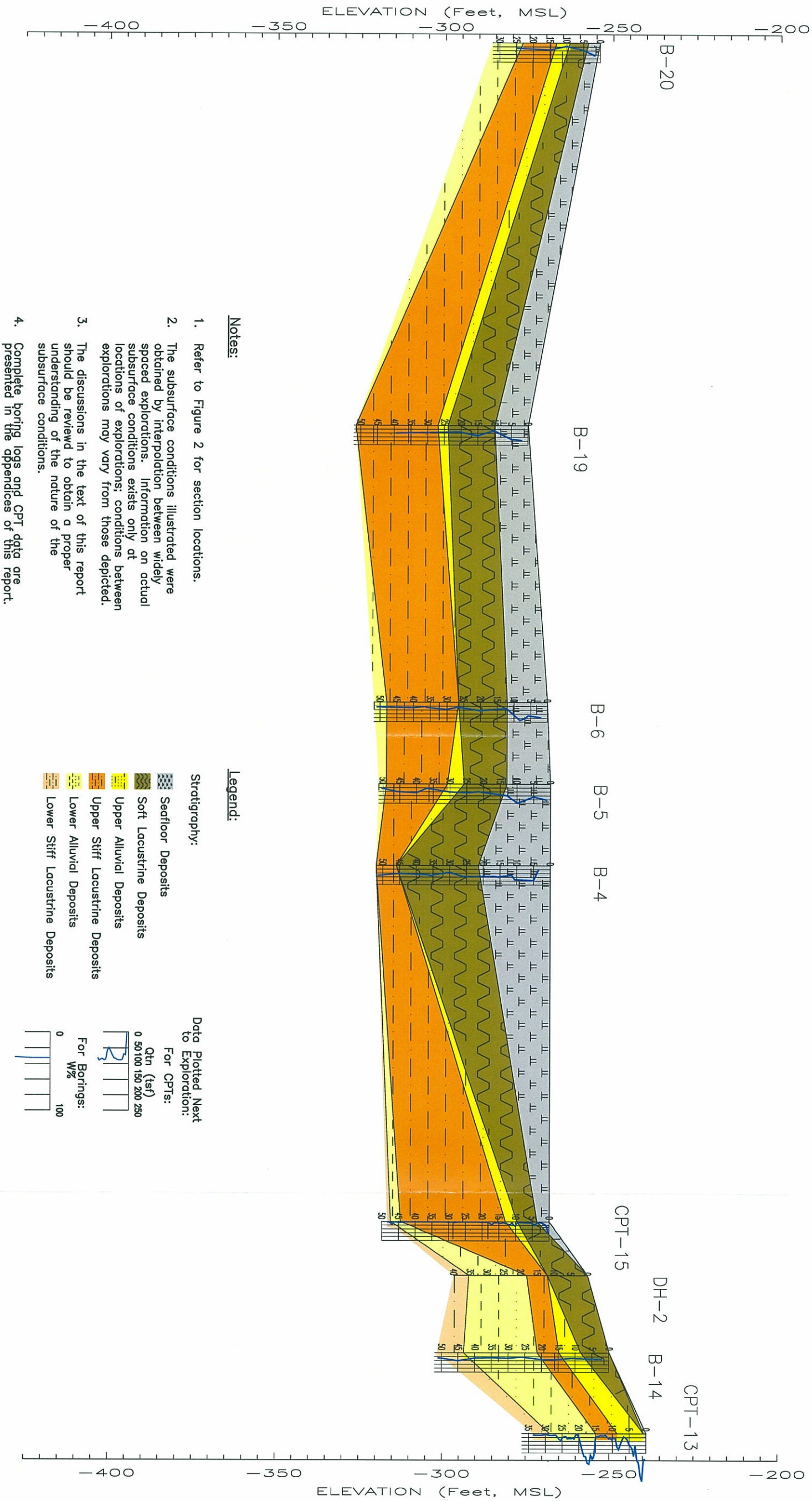


CHECKED BY: AG
DATE: 1-29-04
PM: LDH
PROJ. NO: 27663042.00005

FIG. NO:
9

B
NORTHWEST

B'
SOUTHEAST



- Notes:**
1. Refer to Figure 2 for section locations.
 2. The subsurface conditions illustrated were obtained by interpolation between widely spaced explorations. Information on actual subsurface conditions exists only at locations of explorations; conditions between explorations may vary from those depicted.
 3. The discussions in the text of this report should be reviewed to obtain a proper understanding of the nature of the subsurface conditions.
 4. Complete boring logs and CPT data are presented in the appendices of this report.

URS

62500 0 6250 12500 Feet

SCALE: 1" = 12500'

CHECKED BY: AG

DATE: 12-10-03

PM: LDH

PROJ. NO: 27663042.00005

FIG. NO:

10

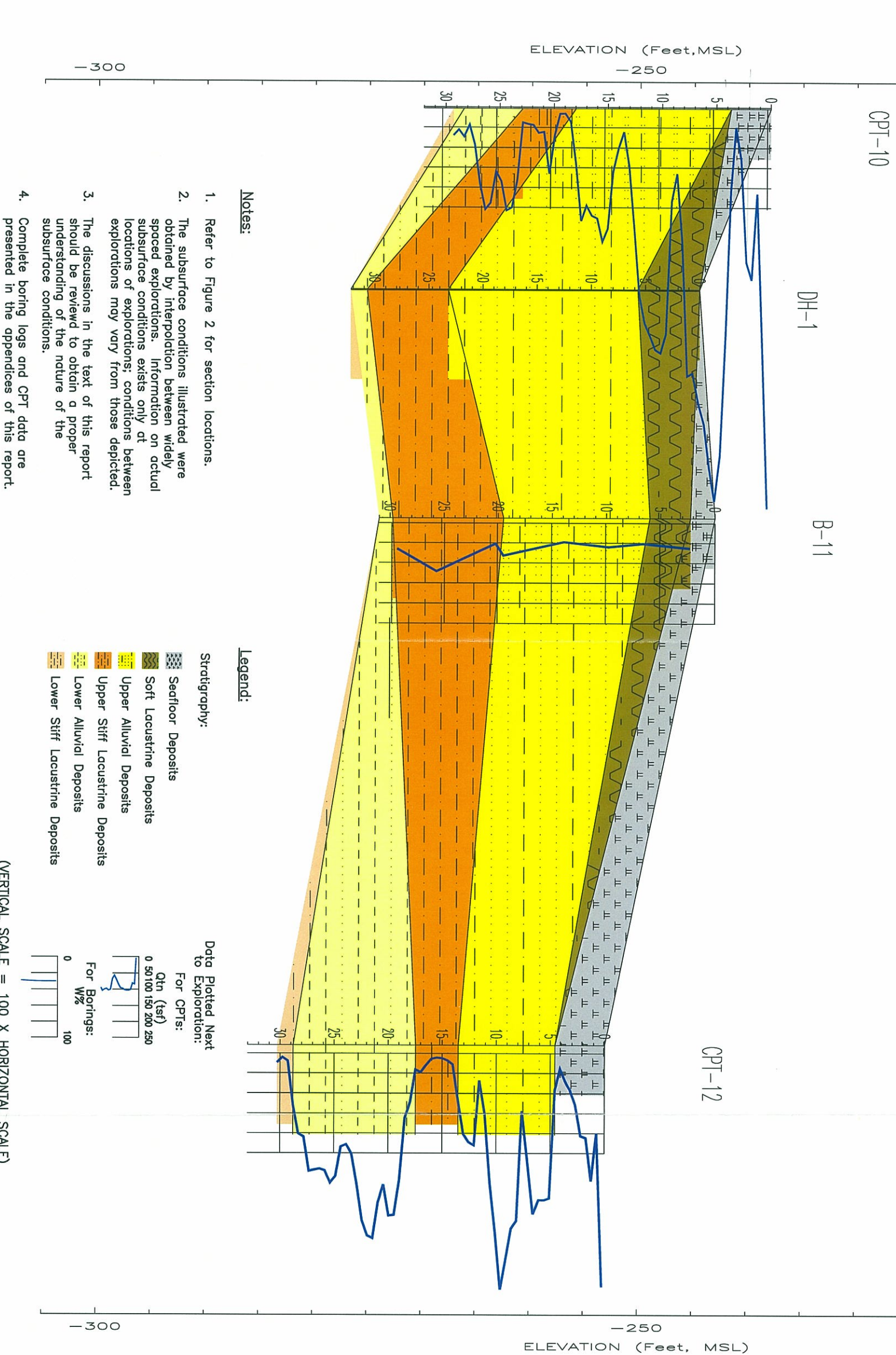
GEOLOGIC CROSS SECTION B-B'

SALTON SEA RESTORATION PROJECT

x:\27663042\B_SECT.DWG

C
WEST

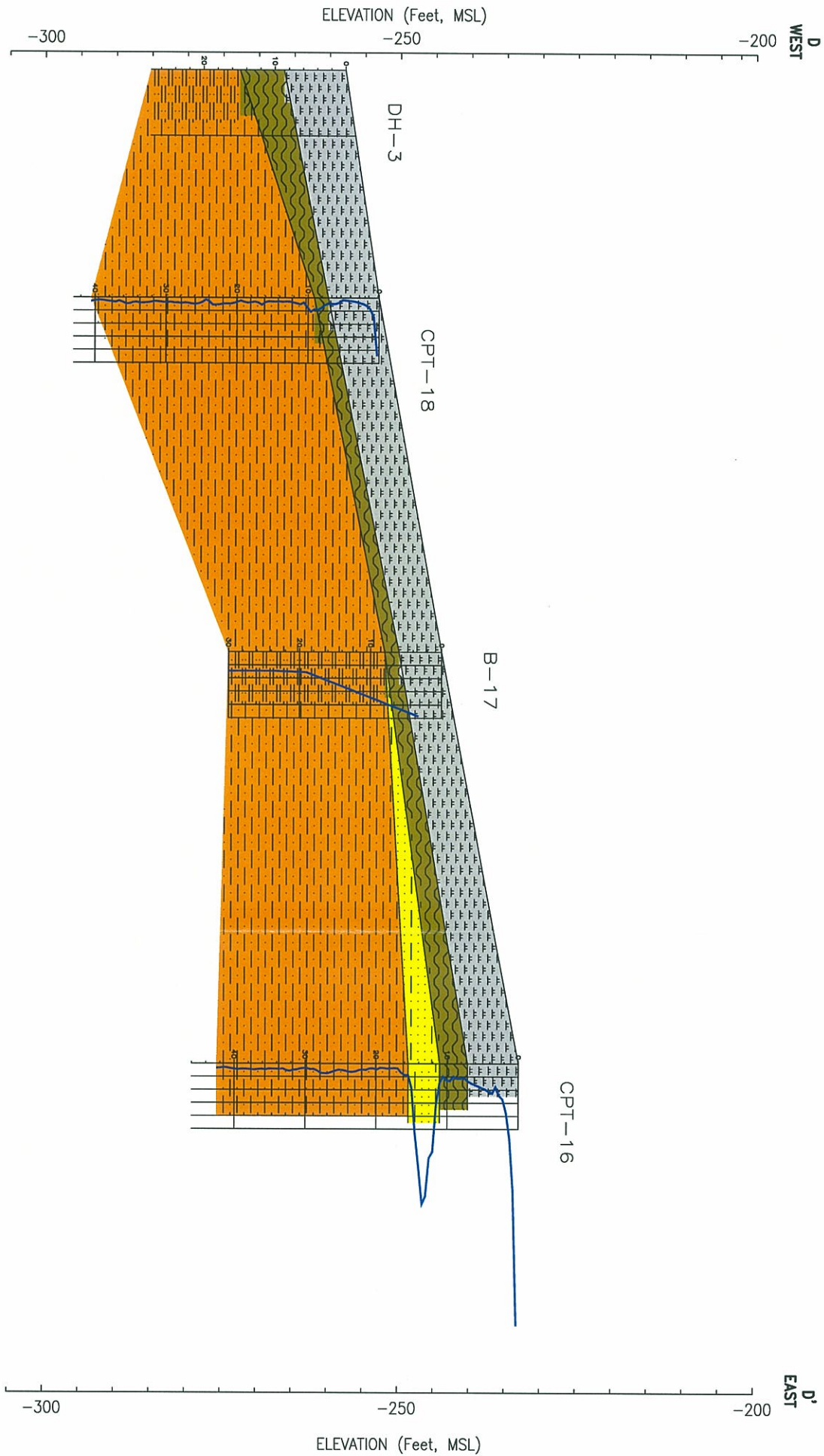
C'
EAST



GEOLOGIC CROSS SECTION C-C'
SALTON SEA RESTORATION PROJECT

CHECKED BY: AG DATE: 1-29-04
PM: LDH PROJ. NO: 27663042.00005

FIG. NO:
11



Legend:

Stratigraphy:

- Seafloor Deposits
- Soft Lacustrine Deposits
- Upper Alluvial Deposits
- Upper Stiff Lacustrine Deposits
- Lower Alluvial Deposits
- Lower Stiff Lacustrine Deposits

Data Plotted Next to Exploration:

For CPTs:

Q_{tn} (tsf)

0 50 100 150 200 250

For Borings:

W%

0 100

Notes:

- Refer to Figure 2 for section locations.
- The subsurface conditions illustrated were obtained by interpolation between widely spaced explorations. Information on actual subsurface conditions exists only at locations of explorations; conditions between explorations may vary from those depicted.
- The discussions in the text of this report should be reviewed to obtain a proper understanding of the nature of the subsurface conditions.
- Complete boring logs and CPT data are presented in the appendices of this report.

(VERTICAL SCALE = 100 X HORIZONTAL SCALE)

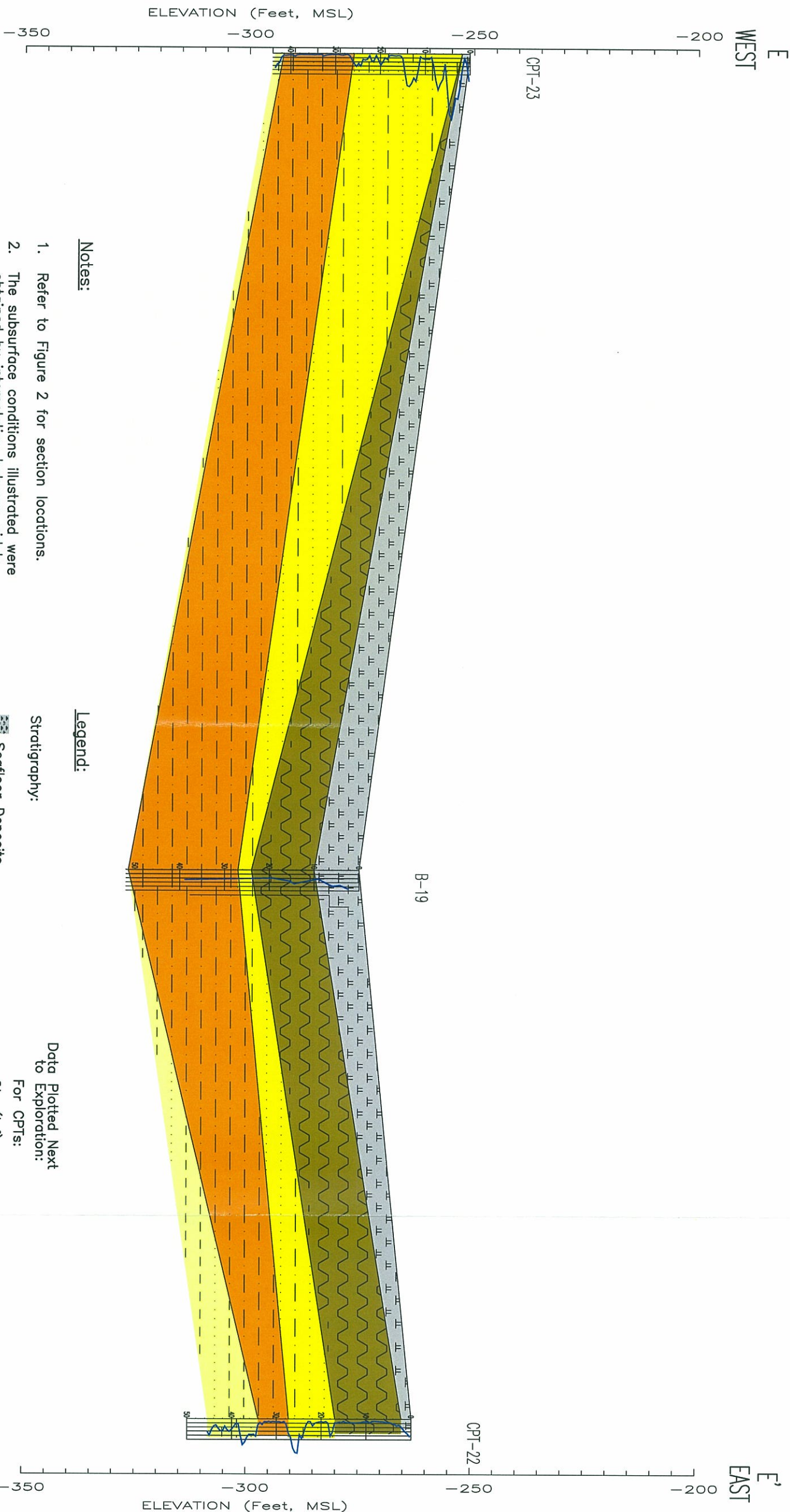
GEOLOGIC CROSS SECTION D-D'
SALTON SEA RESTORATION PROJECT

URS



CHECKED BY: AG DATE: 1-29-04
PM: LDH PROJ. NO: 27663042.00005

FIG. NO:
12



Notes:

1. Refer to Figure 2 for section locations.
2. The subsurface conditions illustrated were obtained by interpolation between widely spaced explorations. Information on actual subsurface conditions exists only at locations of explorations; conditions between explorations may vary from those depicted.
3. The discussions in the text of this report should be reviewed to obtain a proper understanding of the nature of the subsurface conditions.
4. Complete boring logs and CPT data are presented in the appendices of this report.

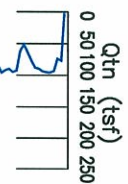
Legend:

Stratigraphy:

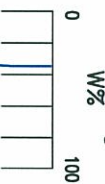
- Seafoor Deposits
- Soft Lacustrine Deposits
- Upper Alluvial Deposits
- Upper Stiff Lacustrine Deposits
- Lower Alluvial Deposits
- Lower Stiff Lacustrine Deposits

Data Plotted Next to Exploration:

For CPTs:



For Borings:



(VERTICAL SCALE = 200 X HORIZONTAL SCALE)

GEOLOGIC CROSS SECTION E-E'
SALTON SEA RESTORATION PROJECT

URS



CHECKED BY: AG DATE: 1-29-04
PM: LDH PROJ. NO: 27663042.00005

FIG. NO: 13