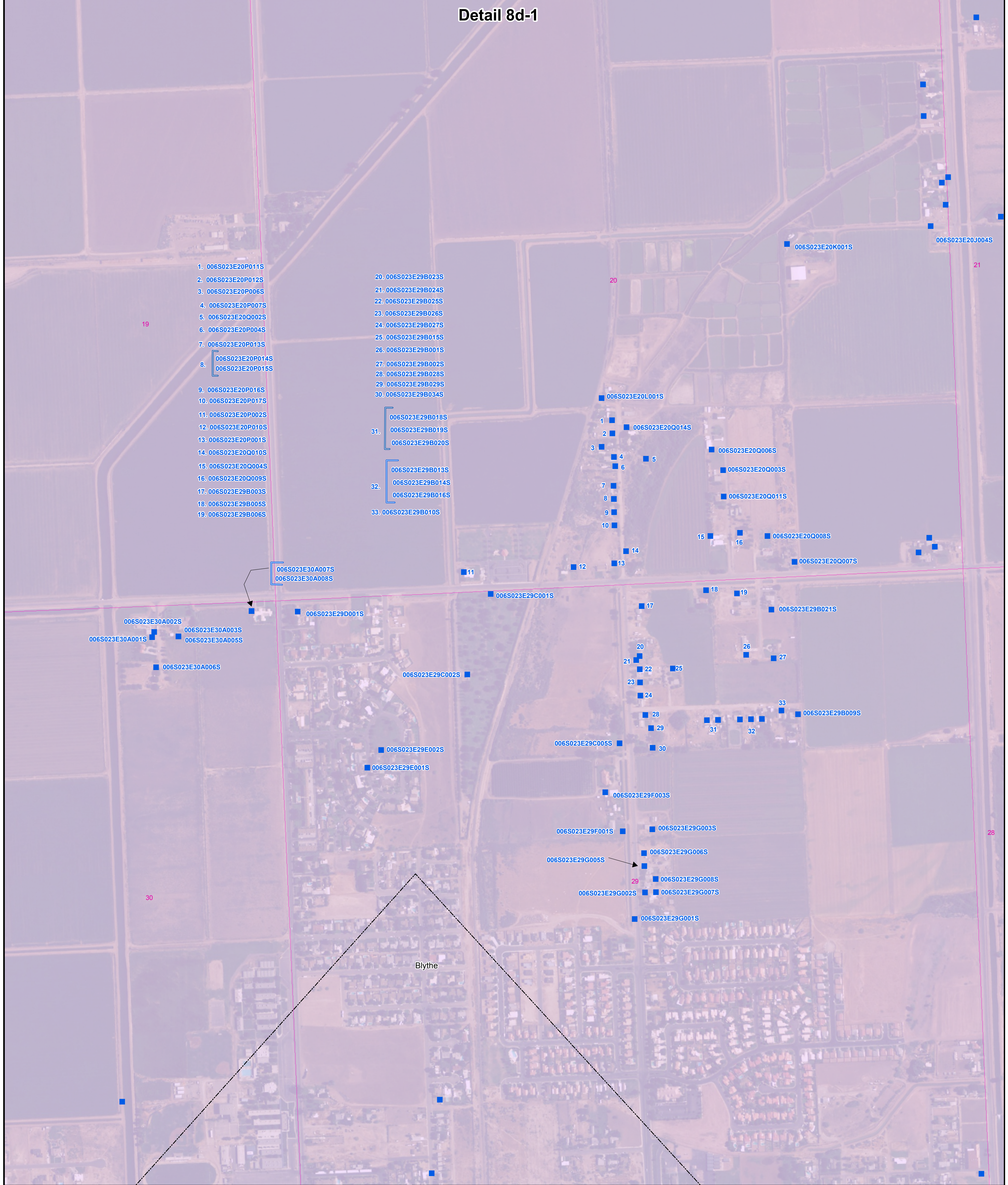


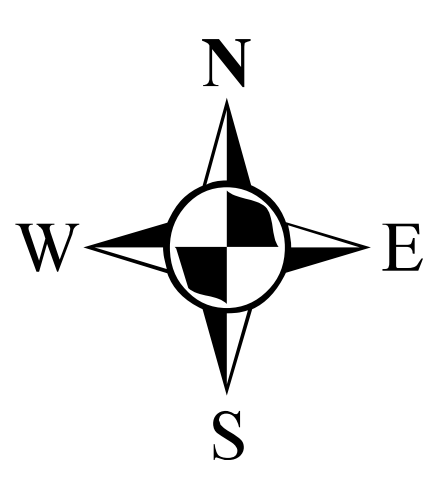
Detail 8d-1



1. 006S023E20P011S
2. 006S023E20P012S
3. 006S023E20P006S
4. 006S023E20P007S
5. 006S023E20Q002S
6. 006S023E20P004S
7. 006S023E20P013S
8. 006S023E20P014S
006S023E20P015S
9. 006S023E20P016S
10. 006S023E20P017S
11. 006S023E20P002S
12. 006S023E20P010S
13. 006S023E20P001S
14. 006S023E20Q010S
15. 006S023E20Q004S
16. 006S023E20Q009S
17. 006S023E29B003S
18. 006S023E29B005S
19. 006S023E29B006S

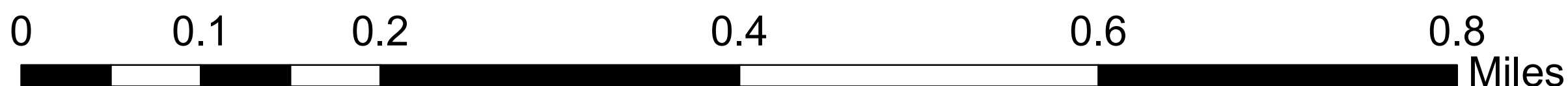
20. 006S023E29B023S
21. 006S023E29B024S
22. 006S023E29B025S
23. 006S023E29B026S
24. 006S023E29B027S
25. 006S023E29B015S
26. 006S023E29B001S
27. 006S023E29B002S
28. 006S023E29B028S
29. 006S023E29B029S
30. 006S023E29B034S
31. 006S023E29B018S
006S023E29B019S
006S023E29B020S
32. 006S023E29B013S
006S023E29B014S
006S023E29B016S
33. 006S023E29B010S

1. 006S023E20L001S
2. 006S023E20Q014S
3. 006S023E20Q006S
4. 006S023E20Q003S
5. 006S023E20Q011S
6. 006S023E20Q008S
7. 006S023E20Q007S
8. 006S023E29D001S
9. 006S023E29C001S
10. 006S023E29C002S
11. 006S023E29E002S
12. 006S023E29E001S
13. 006S023E29C005S
14. 006S023E29F003S
15. 006S023E29F001S
16. 006S023E29G003S
17. 006S023E29G006S
18. 006S023E29G008S
19. 006S023E29G007S
20. 006S023E29G001S
21. 006S023E29G005S
22. 006S023E29G002S
23. 006S023E29G000S
24. 006S023E29G000S
25. 006S023E29G000S
26. 006S023E29B021S
27. 006S023E29B009S
28. 006S023E29B009S
29. 006S023E29B009S
30. 006S023E29B009S
31. 006S023E29B009S
32. 006S023E29B009S
33. 006S023E29B009S



Legend

- Wells in River Aquifer**
- Standby Emergency
 - Withdrawal - Domestic
 - ▲ Withdrawal - Irrigation
 - ◆ Withdrawal - Other
 - Withdrawal - Unclassified Use
 - +
- Water Use Category**
- Water Contracts
 - Township - Range Lines
 - Section Lines
 - Flood Plain
 - Accounting Surface
- City Boundary
- State Boundaries



Well data based on June 19, 2008 download from USGS Well Inventory

Revised June 25, 2008