

**Appendix 1 – Reaches Identified in the Lower
Colorado River Mainstream Evaporation and
Riparian Evapotranspiration Losses Report**

Introduction

This Appendix to the Lower Colorado River Mainstream Evaporation and Riparian Evapotranspiration Losses Report provides maps showing the extent of the area under examination. Figure A1-1 shows the full extent of the area, while indicating how the individual reaches were defined. Figure A1-2 through Figure A1-6 provide more detail about the extents of each individual reach, as defined in the Lower Colorado River Mainstream Evaporation and Riparian Evapotranspiration Losses Report.

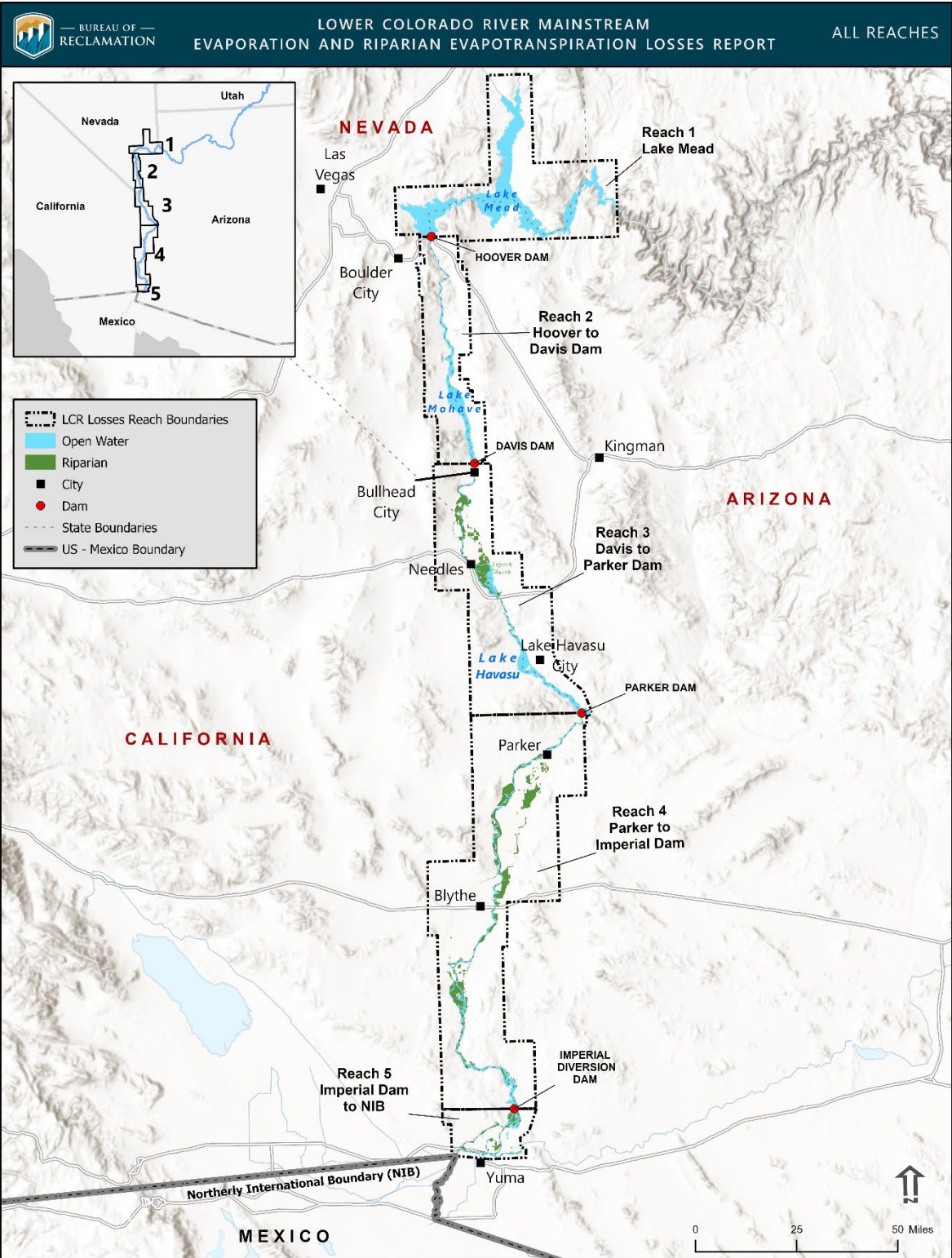


Figure A1-1 - Map of reaches identified in the Lower Colorado River Mainstream Evaporation and Riparian Evapotranspiration Losses Report

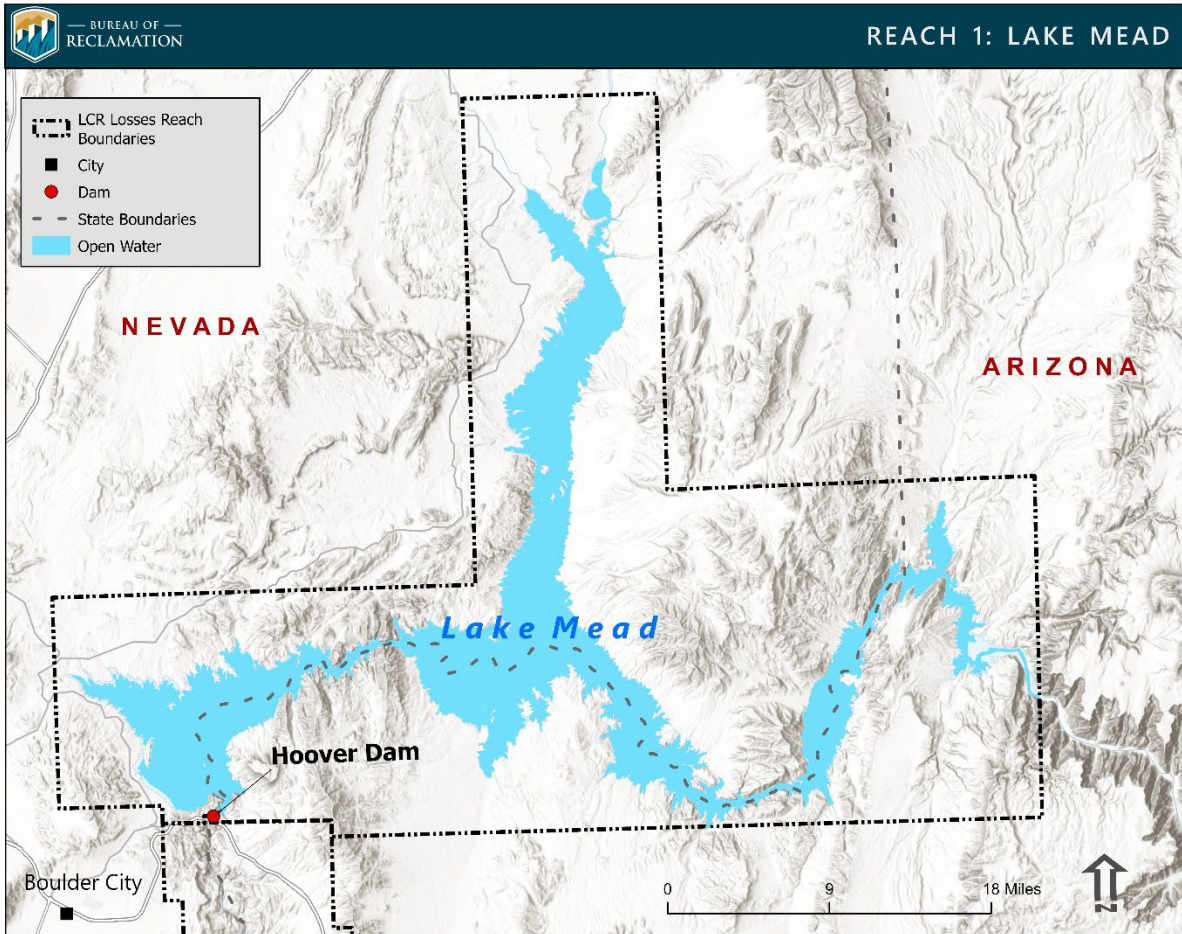


Figure A1-2 - Area included for Reach 1, Lake Mead

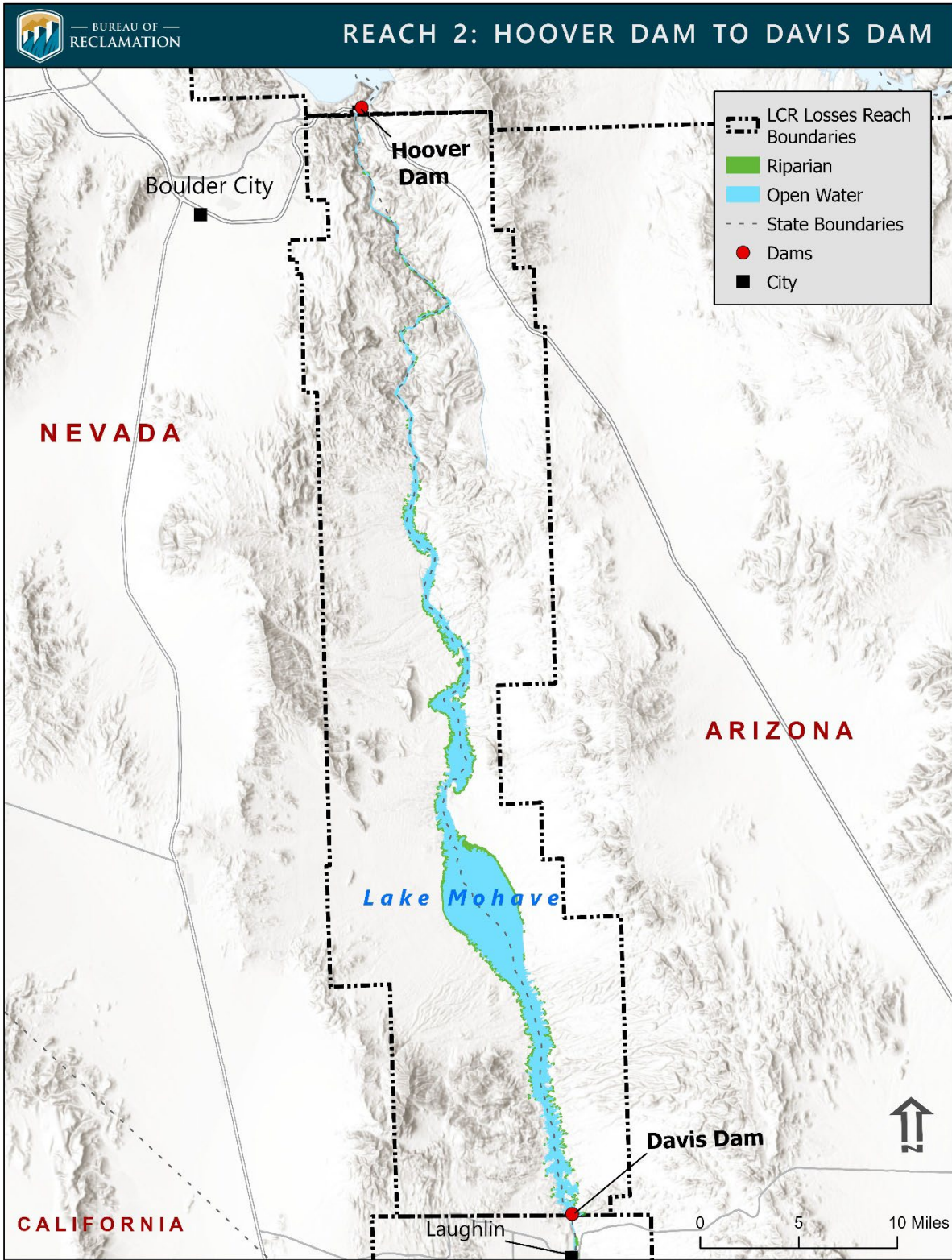


Figure A1-3 – Area included for Reach 2, Hoover Dam to Davis Dam

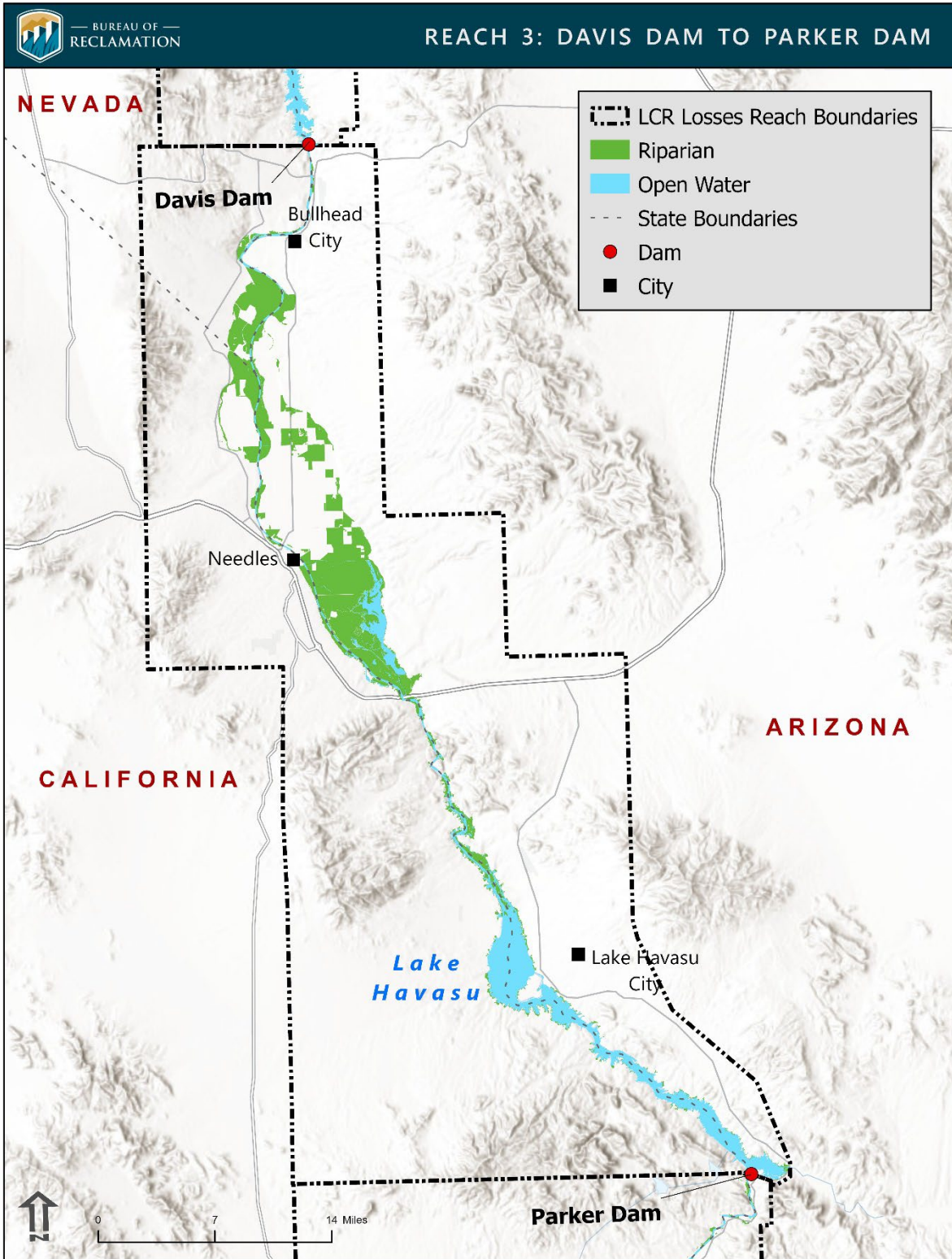


Figure A1-4 – Area included for Reach 3, Davis Dam to Parker Dam

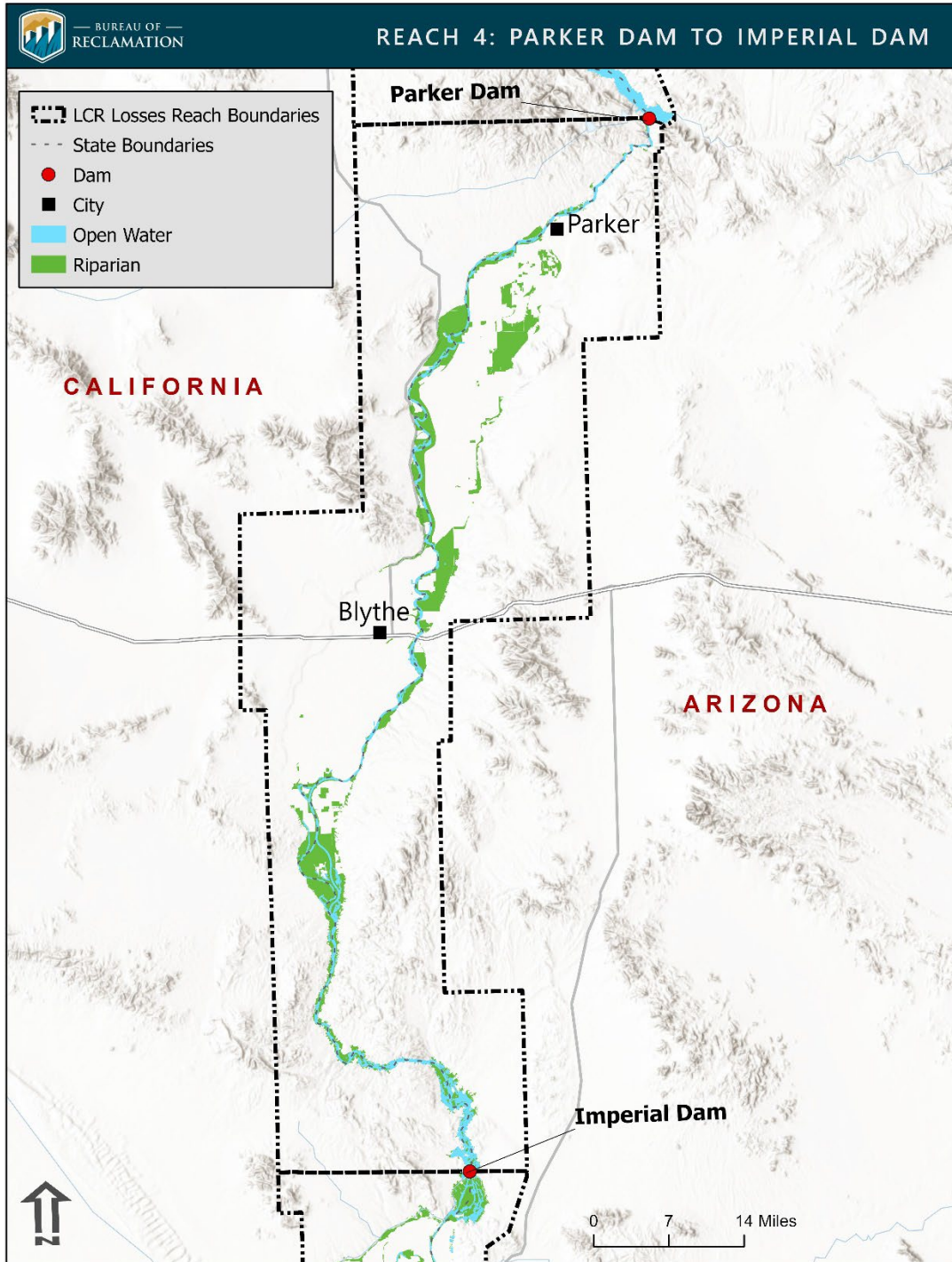


Figure A1-5 – Area included for Reach 4, Parker Dam to Imperial Dam

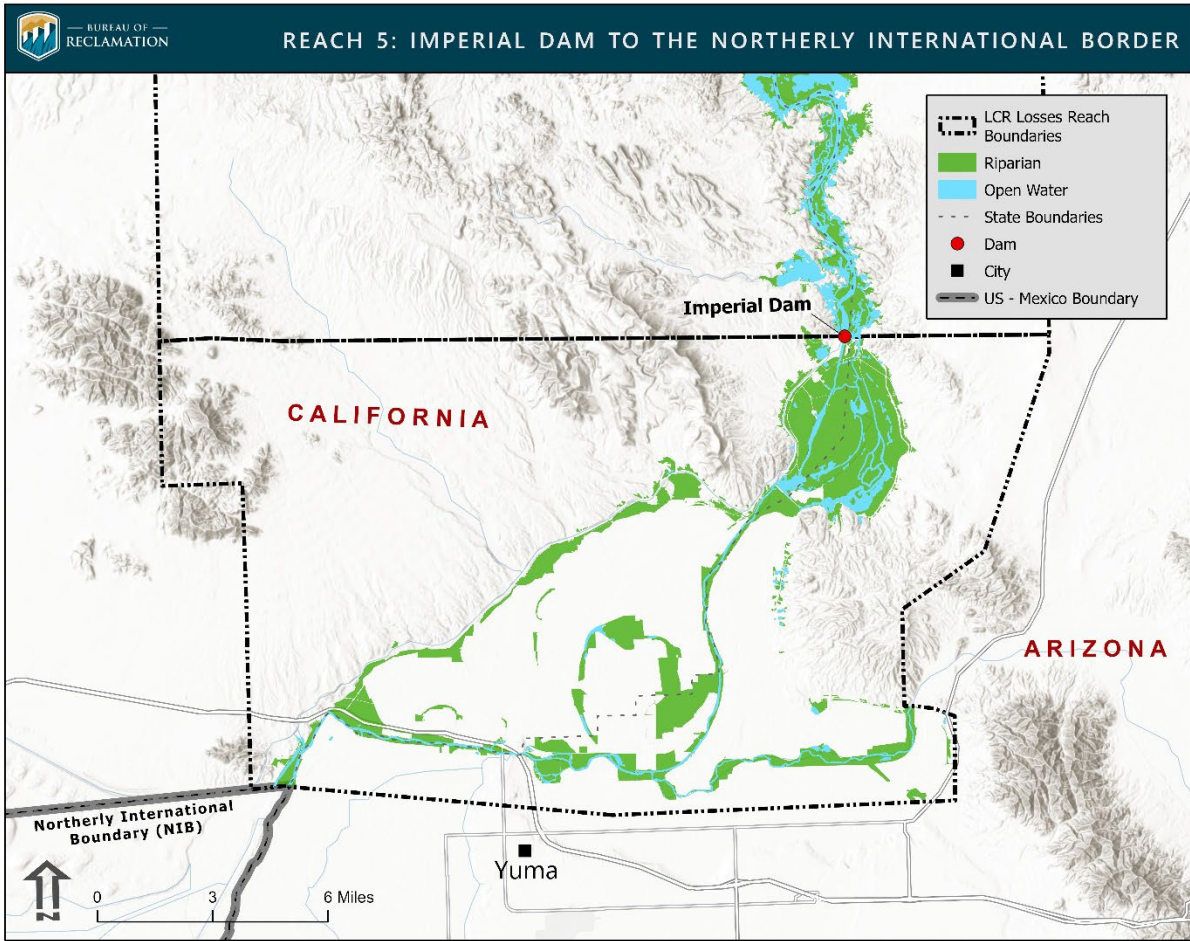


Figure A1-6 – Area included for Reach 5, Imperial Dam to Northerly International Boundary