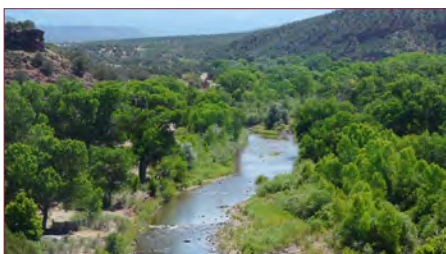




FALL 2013

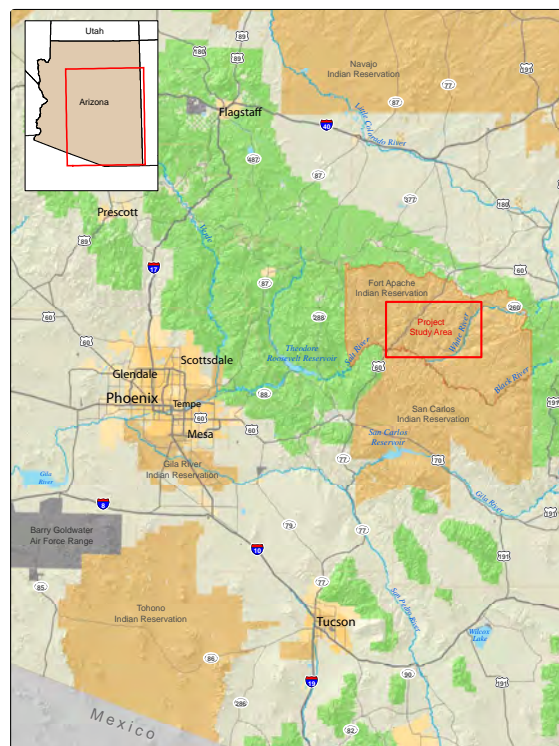
## WHITE MOUNTAIN APACHE TRIBE RURAL WATER SYSTEM Project Overview



An environmental impact statement (EIS) is now being prepared to assess the potential environmental effects of constructing the White Mountain Apache Rural Water System to divert, store, and distribute water from the North Fork of the White River for the use and benefit of the White Mountain Apache Tribe (WMAT or Tribe). The Proposed Action would include construction and operation of

the WMAT Rural Water System, which includes a dam, storage reservoir, pumping plant, treatment facilities, and a distribution system that would provide water to communities located on the Fort Apache Indian Reservation, Arizona, including Whiteriver, Fort Apache, Canyon Day, Cedar Creek, Carrizo, and Cibecue.

In accordance with the National Environmental Policy Act of 1969 (NEPA), the Bureau of Reclamation (Reclamation) is the lead federal agency, and the WMAT and the Bureau of Indian Affairs (BIA) are cooperating agencies.



### WHITE MOUNTAIN APACHE TRIBE WATER RIGHTS QUANTIFICATION ACT OF 2010

The Proposed Action is the outcome of the WMAT Water Rights Quantification Act of 2010 (Act) in which Congress directed Reclamation to plan, design, and construct the WMAT Rural Water System.

The Act also provides for operation of the completed system by Reclamation for three years following construction, after which WMAT would own, operate and maintain the water system.

### PURPOSE AND NEED FOR THE PROPOSAL

Since the early 2000s, the Whiteriver area has experienced water outages, declining water quality and a diminishing water source. The WMAT needs a dependable and sustainable water supply for the Fort Apache Indian Reservation.

The Proposed Action would fulfill Reclamation's statutory mandate under the WMAT Water Rights Quantification Act to plan, design, construct, operate, maintain, and replace the WMAT Rural Water System until it is transferred to the Tribe as provided in the Act.

For the WMAT, the purpose of the Proposed Action is to provide a secure, safe and dependable, good-quality, fresh water supply for its communities and tribal members.

### PROJECT BENEFITS

This project would replace a failing groundwater supply and ensure a long-term and reliable fresh water supply for the Tribe well into the future.

The project could also provide multipurpose benefits, including commercial water supply, recreation, hydropower potential, limited flood control, irrigation, improved instream flows for riparian and aquatic habitat, and stream temperatures suitable for production of endangered Apache trout at the Alchesay National Fish Hatchery.

### WHICH AGENCIES ARE INVOLVED IN THE EIS?



*The Bureau of Reclamation* is the National Environmental Policy Act (NEPA) lead agency because of its statutory requirement to implement the Proposed Action



*WMAT* is a NEPA cooperating agency because it is the statutory owner/beneficiary of this project



*Bureau of Indian Affairs* is a NEPA cooperating agency because of its statutory responsibility regarding Indian Trust Assets





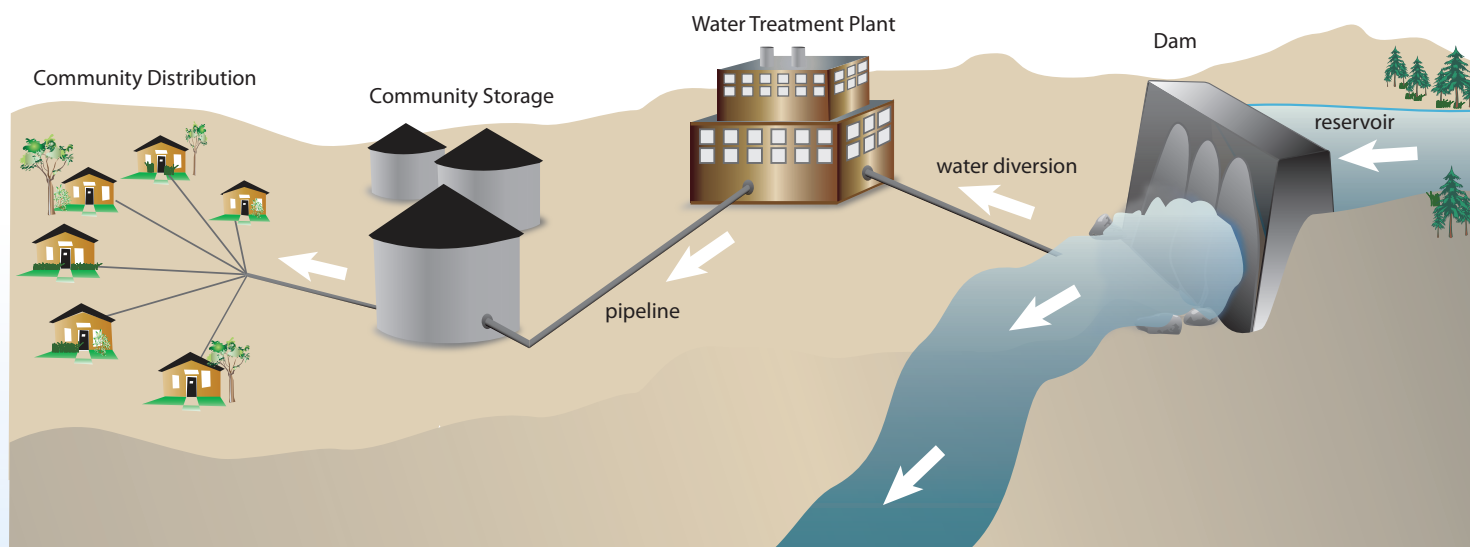
## Project Overview Map







## What a Proposed Water System Would Look Like



## Project Components

### THE DAM AND RESERVOIR

- The proposed dam site is about 7.5 miles south of the intersection of Highway 260 and Indian Route 73, about 12 miles north of Whiteriver.
- The proposed Miner Flat Dam, a roller compacted concrete dam, would be about 160 feet in height, and would have a crest length of 450 feet.
- The reservoir created by the dam would have a surface area of about 160 acres at an elevation of about 6,062 feet, and a storage capacity of about 8,620 acre-feet.
- The dam and reservoir would provide long-term stability and reliability in water diversions for the water distribution system. The dam would also release water back into the North Fork of the White River.
- The dam site would have new access roads, associated facilities for operations and maintenance, and possible recreational facilities.

### WATER DISTRIBUTION SYSTEM

- The project would install a pipeline from the treated water storage site at the WTP to existing water distribution systems serving the communities of Whiteriver, Fort Apache, Canyon Day, Cedar Creek, Carrizo, and Cibecue.
- The distribution system consists of 60 miles of new pipeline, storage tanks for each of the receiving communities, and pumping stations.
- The pipeline alignment would mostly follow existing roadways (except between Carrizo Creek and Cibecue Ridge).

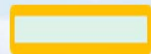
### DIVERSION/WATER INTAKE AND WATER TREATMENT PLANT (WTP)

- The water treatment system is designed to treat 14.55 million gallons of water per day.
- WTP options include expanding the existing plant, building a new plant, or a combination of the two. Expanding the existing WTP is currently the preferred alternative.
- The expanded system would require a new raw-water intake from the North Fork of the White River at a site near the existing intake and pump station. Water would be conveyed in a 24-inch pipeline to the WTP.
- Treated water would be delivered to storage tanks via a gravity or pressurized pipeline.
- During the 4- to 5-month WTP construction phase, communities would continue to be served by the Miner Flat wells.





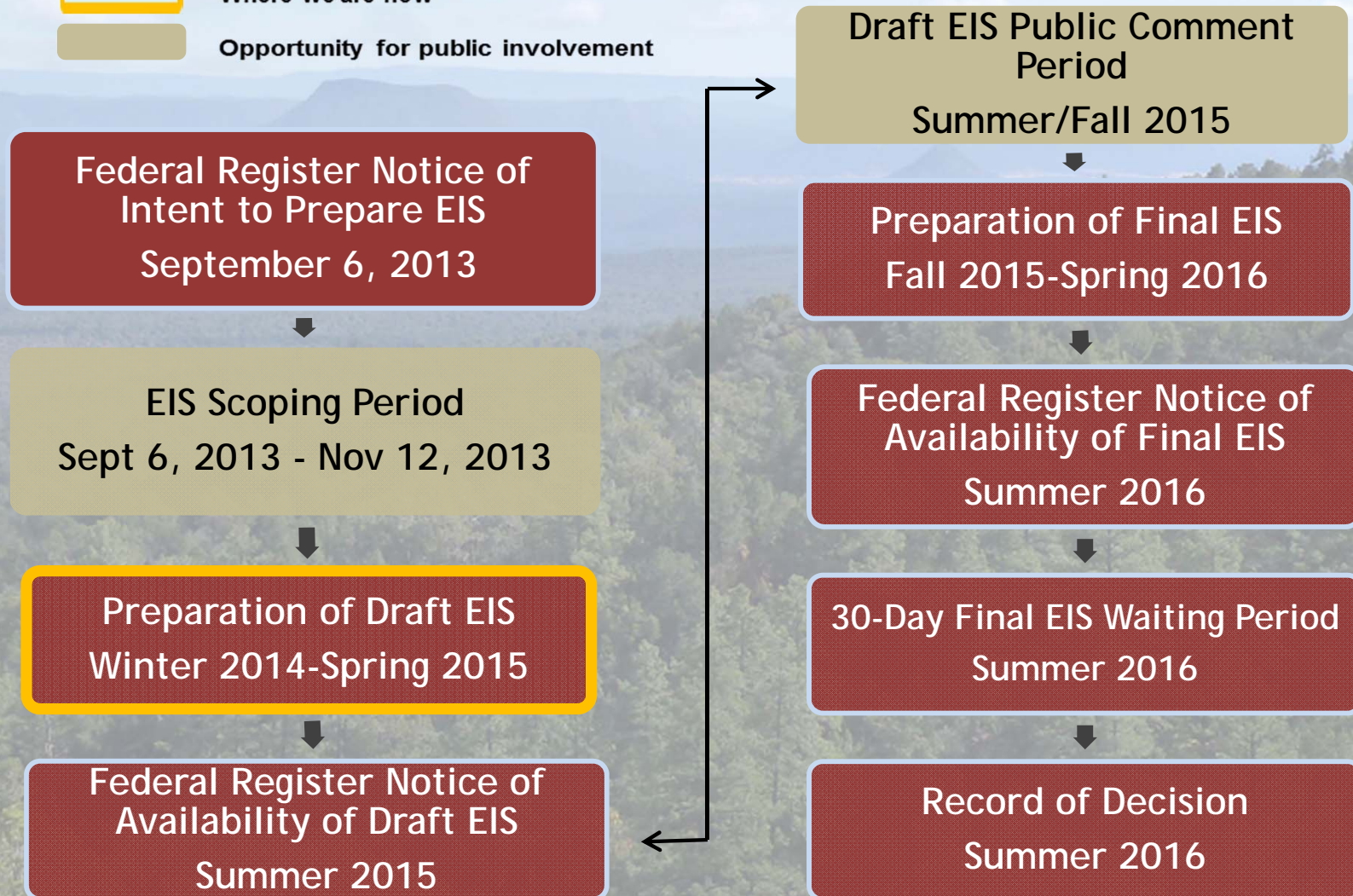
# Environmental Impact Statement Timeline



Where we are now



Opportunity for public involvement



For more information, contact: Mr. John McGlothlen, Bureau of Reclamation, 6150 West Thunderbird Road, Glendale, AZ 85306-4001; e-mail: [jmcglothlen@usbr.gov](mailto:jmcglothlen@usbr.gov)