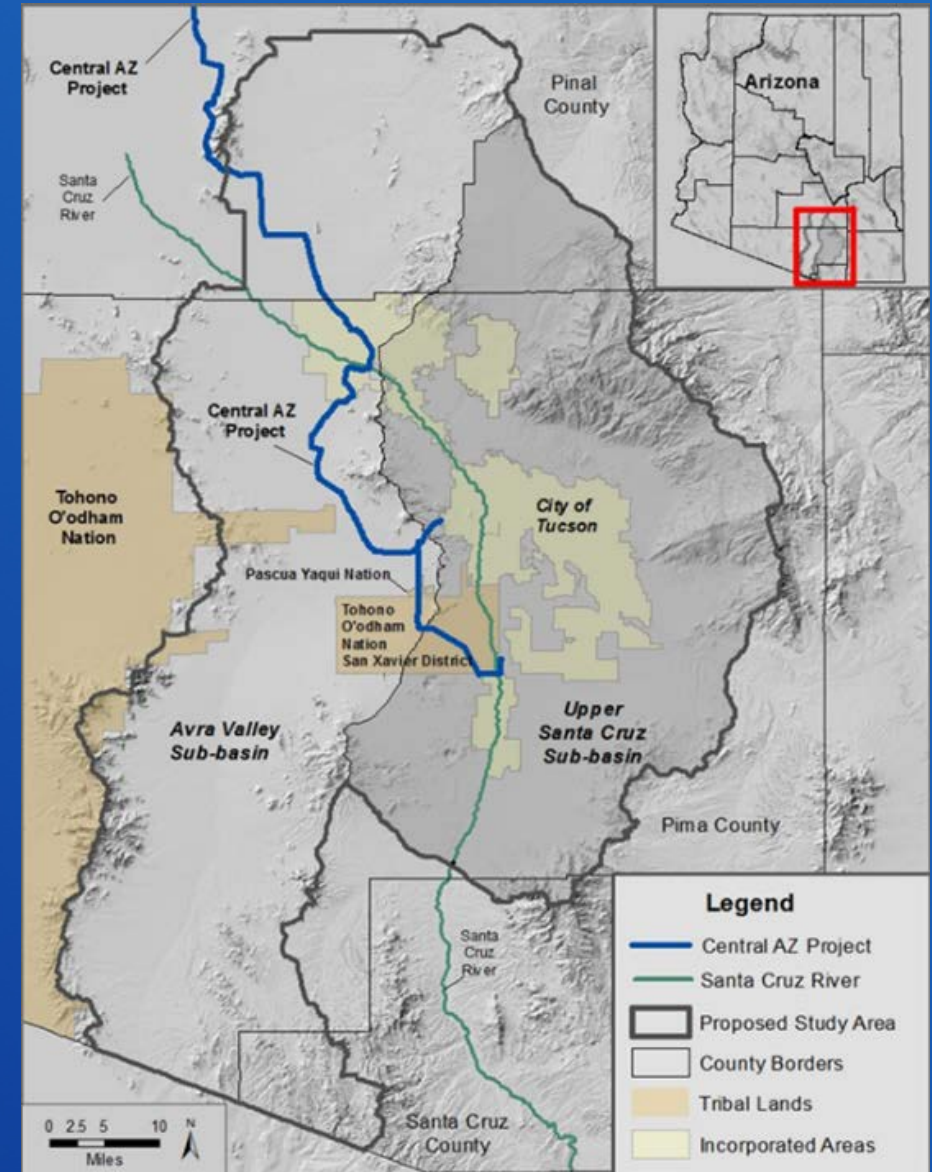


# Lower Santa Cruz River Basin Study

## *Adaptation Strategies Workshop Discussion*

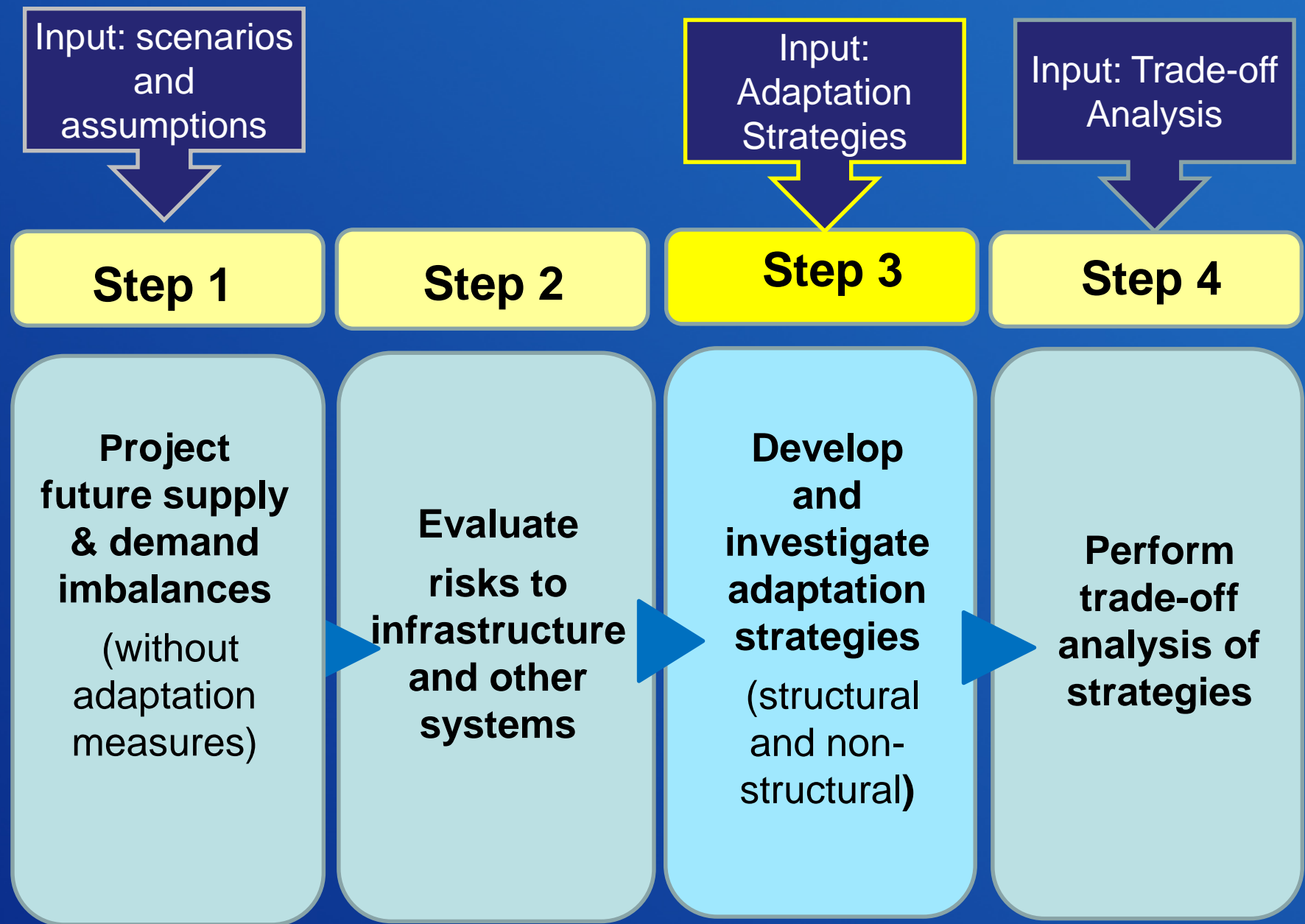
*Eve Halper  
Water Resources Planner  
Reclamation Phoenix Area Office  
August 27, 2019*



# RECLAMATION

# LSCR Basin Study Overview

## Four Required Elements<sub>r</sub>



RECLAMATION

# Study Timing

- GW Model results for “worse case” scenario will be presented in mid-October
- All scenario products will be available in January, 2020
- How can we complete study by September, 2020?
- **Suggestion:** Hold initial workshop to develop adaptation strategies for worse case scenario in November, 2019
- Hold a second workshop in January, 2020 to:
  - Refine adaptation strategies from November workshop
  - Address outcomes of scenarios not covered by “worse case” scenario strategies

# Suggested Workshop Format

- Approximately 9:30 am to 3:30 pm
- Lunch served in-house (partner contribution)
- Professional facilitator(s) will run workshop
- Strategies to be described using a consistent form for relevant information
- Form to be distributed ahead of time
- Begin workshop by reviewing adaptation objectives as a group
- If sufficient attendees, break up into small groups for brainstorming
- Participants should provide information necessary to model impact on groundwater levels
- Possible initial screening at end of workshop



# Example information

- Project Sponsor
- Description, especially volume(s) of water involved
- Location
- Start Date, End Date
- How would project impact gw pumping or recharge in the TAMA?
- Reclamation personnel must be able to develop strategy-specific MODFLOW files in order to model effects on groundwater levels
- Projects outside GW model boundaries may be able to be modeled in other ways

# Tentative Dates

## Groundwater Modeling Product Development

Worse Case  
Scenario  
Presentation –  
***mid-October, 2019***

All Scenario  
Products  
Presentation –  
***January, 2020***

## Adaptation Strategy Development

1<sup>st</sup> Strategy  
Development  
Workshop –  
***November, 2019***

2<sup>nd</sup> Strategy  
Development  
Workshop –  
***January, 2020***

## Analysis of Adaptation Strategies

Initial Analysis  
(Worse Case Scenario  
Strategies):  
***Nov. 2019 – Jan. 2020***

Refinement of worse-  
case scenario strategies;  
Initial Analysis (other  
scenarios):  
***January – March 2020***

## Trade-off Analysis

Development of Trade-  
off Criteria  
***Fall 2019 to  
March 2020***

Trade-off Analysis:  
***March, 2020***

**Comments?**

**Suggestions?**

**RECLAMATION**