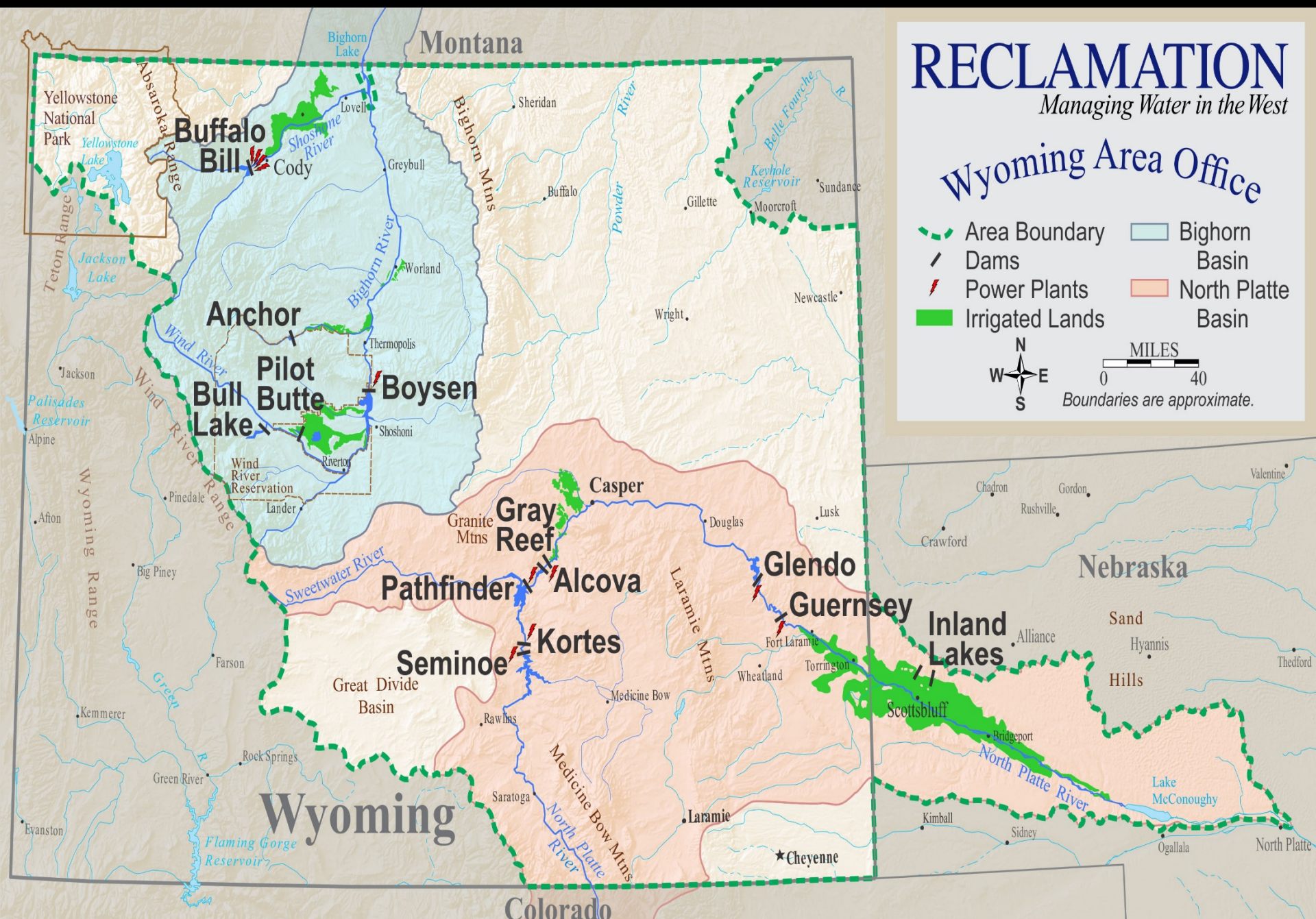


Wyoming Area Office Boundaries



Boysen Reservoir Allocation

BOYSEN RESERVOIR ALLOCATIONS

Elev. 4758.0
Dam Crest

Maximum Water Surface / top of Surge Elev. 4752.0 (1,412,905 Acre-Feet)

Surcharge - 520,679 Acre-Feet

Top of Flood Control Elev. 4732.2 (892,226 Acre-Feet)

Exclusive Flood Control 150,632 Acre-Feet

Top of Joint Use - Elev. 4725.0 (741,594 Acre-Feet)

Joint Use - 144,229 Acre-Feet

Top of Active Conservation Elev. 4717.0 (597,365 Acre-Feet)

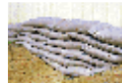
Active Conservation - 378,184 Acre-Feet



POWER



IRRIGATION



FLOOD CONTROL



RECREATION



FISH



INDUSTRIAL



MUNICIPAL

Top of Inactive Conservation Elev. 4685.0 (219,181 Acre-Feet)

Inactive Conservation - 179,097 Acre-Feet

Top of Dead Elev. 4657.0

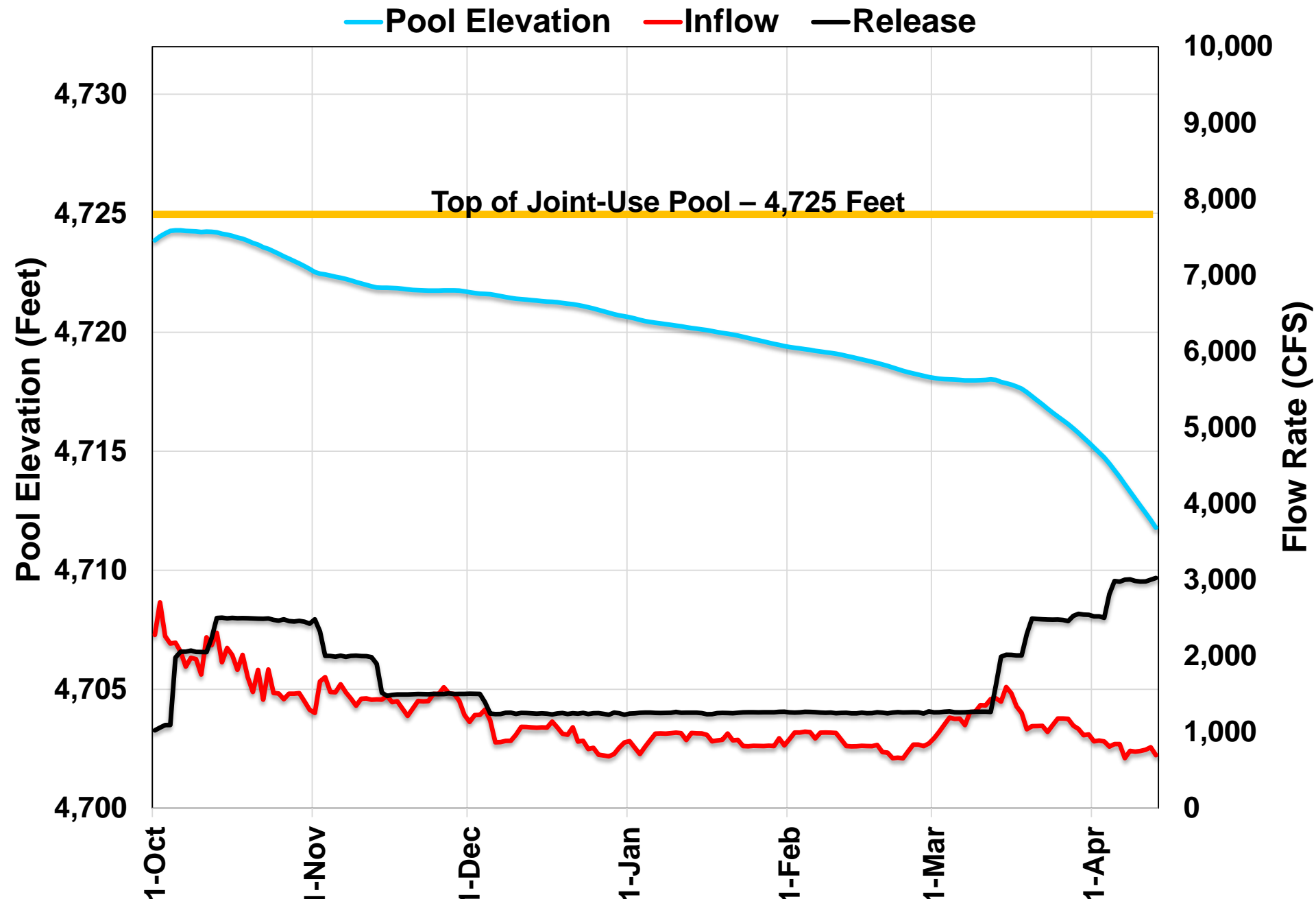
Dead - 40,084 Acre-Feet

Streambed Elev. 4608.0

Gated
Spillway Crest
Elev. 4700.0

Outlet & Penstock
Inverted Elev. 4657.0

Boysen Reservoir Operations 2018 to date

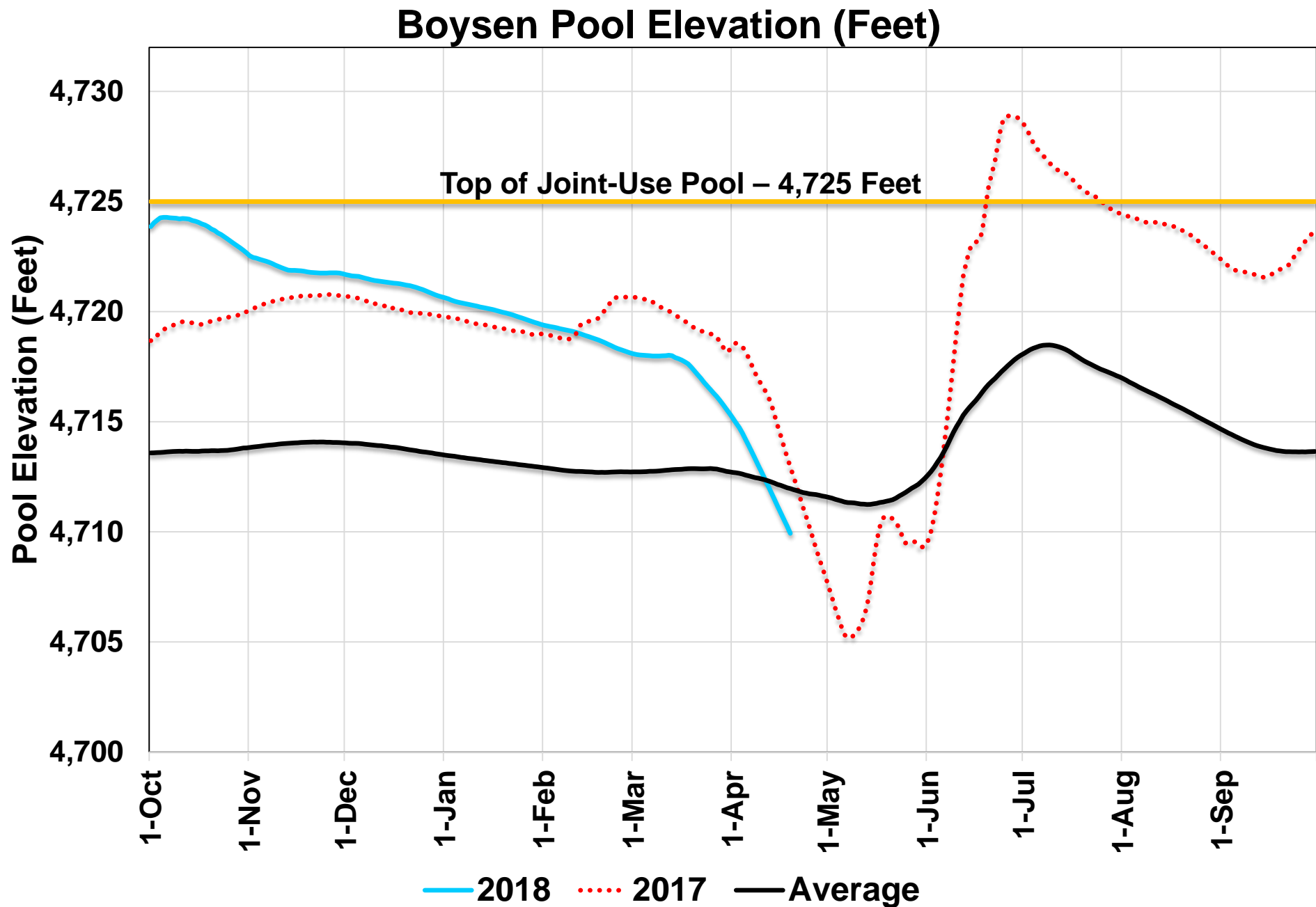


Boysen– WY 18 Conditions to Date

- Inflow Volumes (POR 1953-2017)
 - Oct 17: 2nd Highest
 - Nov 17: New Record*
 - Dec 17: New Record*
 - Jan 18: New Record*
 - Feb 18: 9th Highest
 - Mar 18: 6th Highest
 - Oct 1 through Apr 1: New Record*
 - Currently ~ 65% full with a river release of 3,000 cfs.

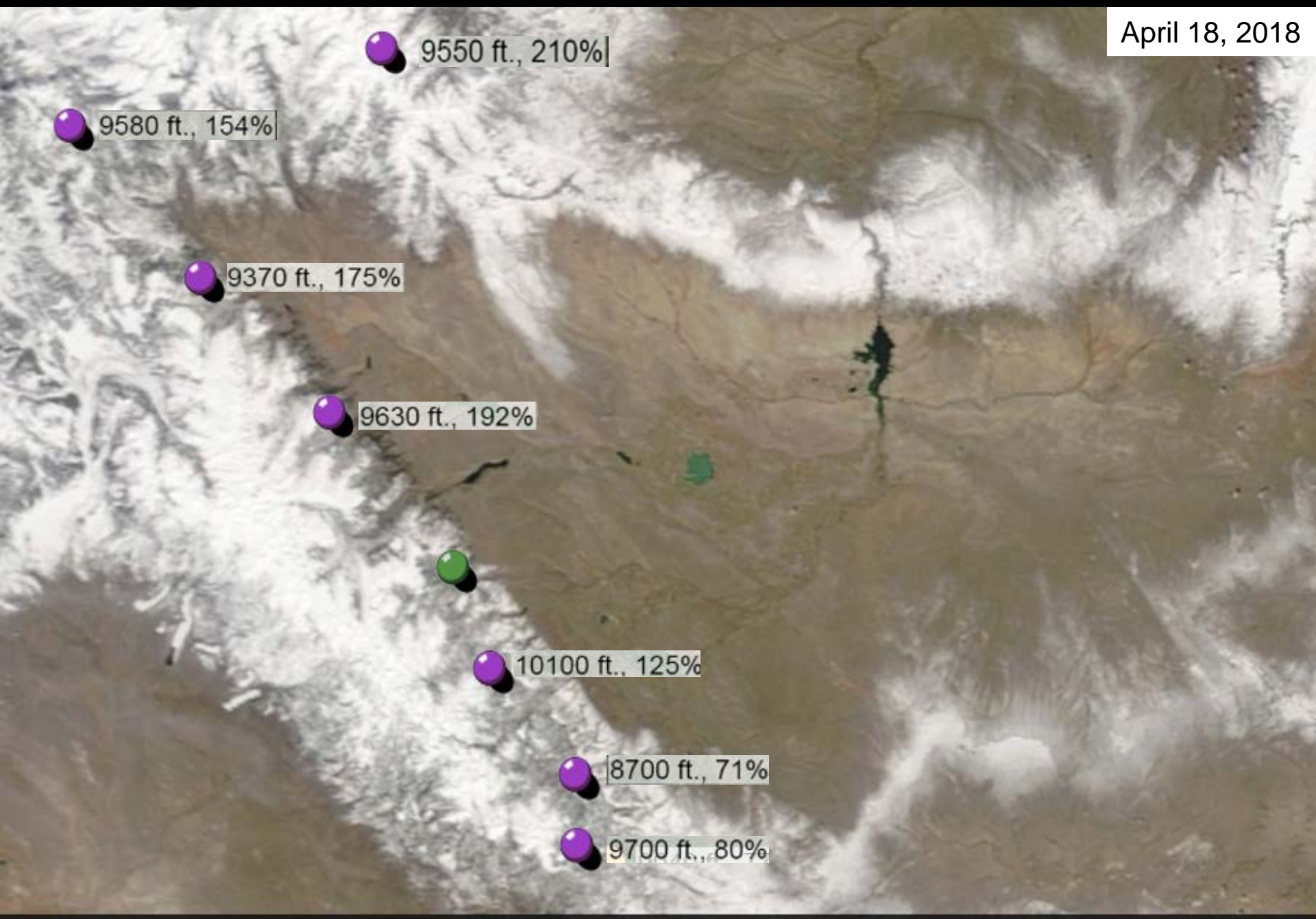
RECLAMATION

Boysen Pool Elevation – 2018 vs 2017 & Average

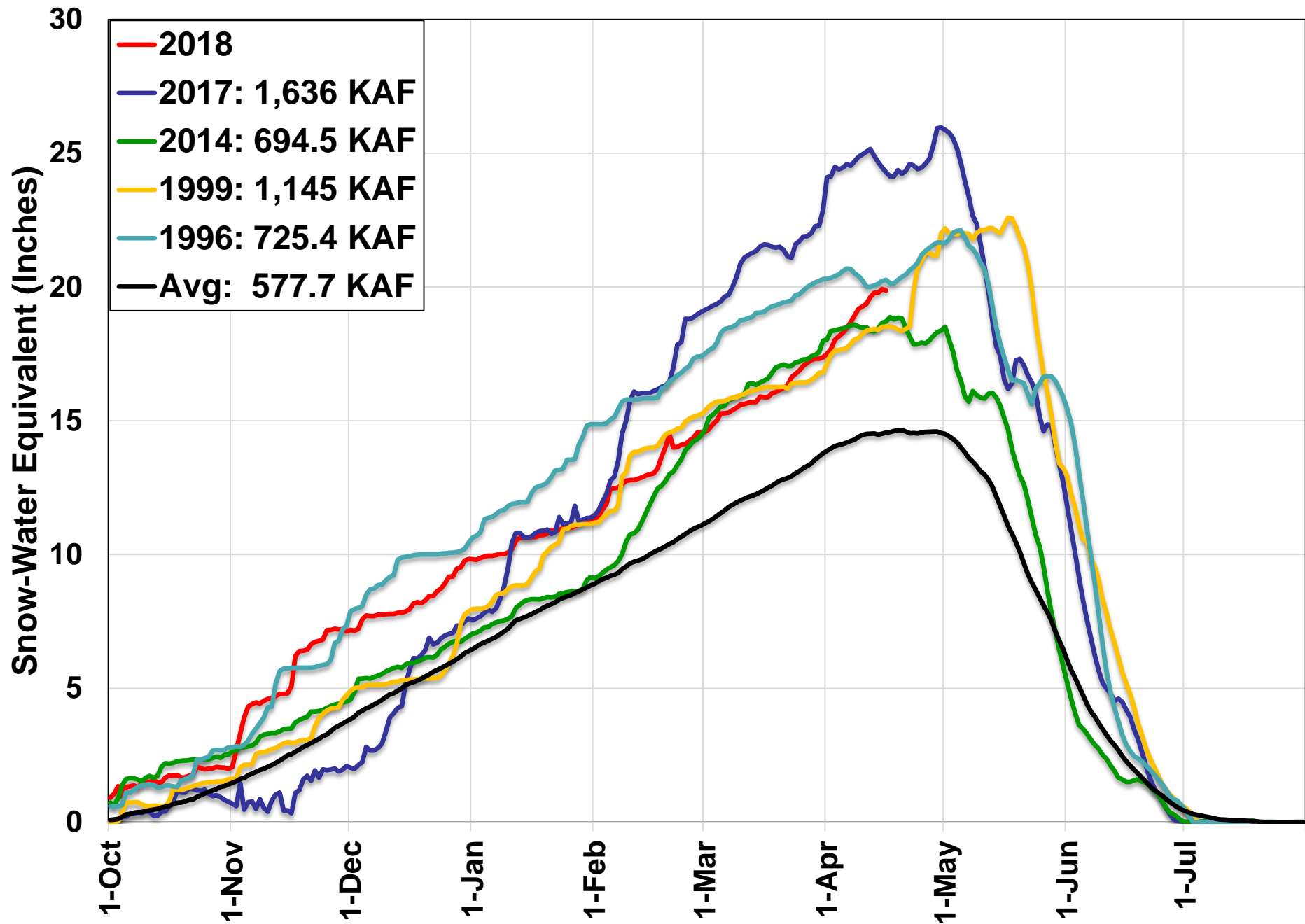


Boysen Forecast Snotel Composite

April 18, 2018

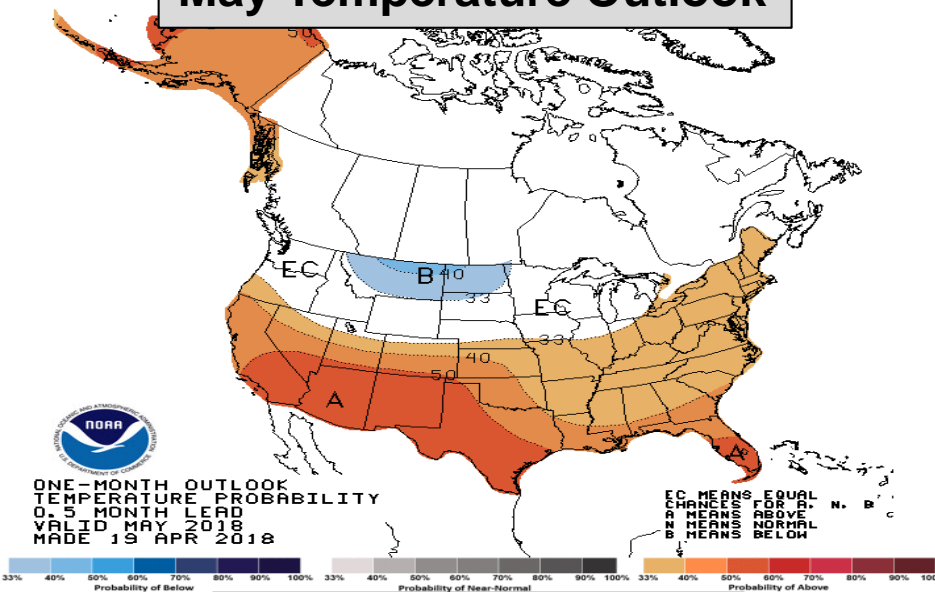


Boysen SWE – 2018 vs. Similar Years and 30 Yr. Average

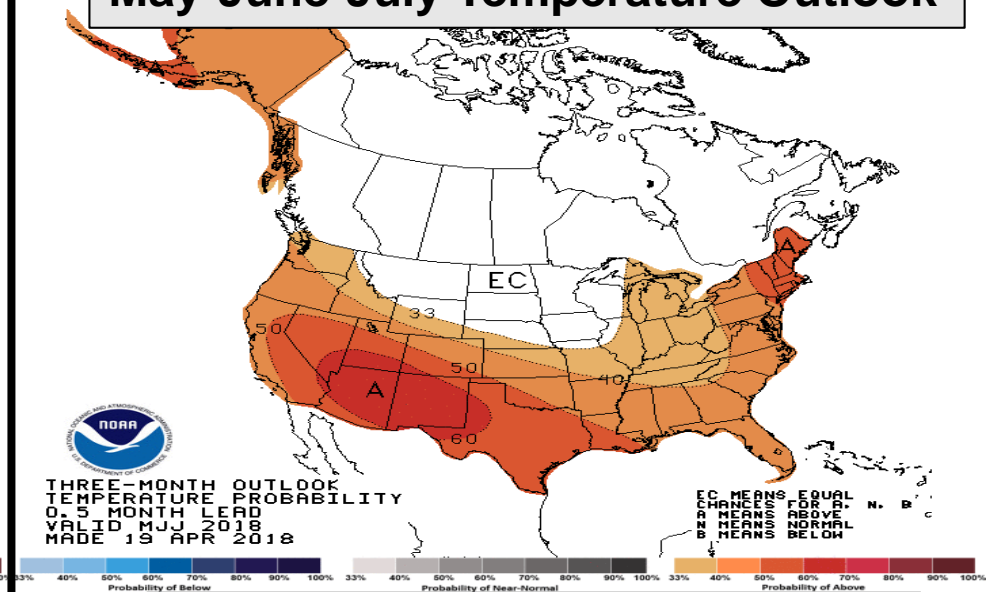


National Weather Service: Outlooks

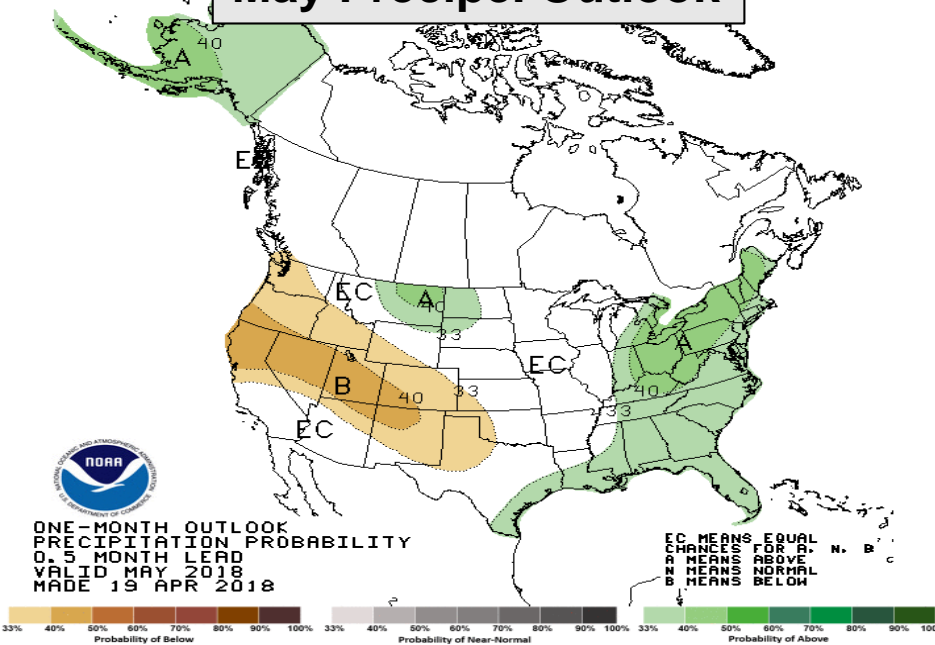
May Temperature Outlook



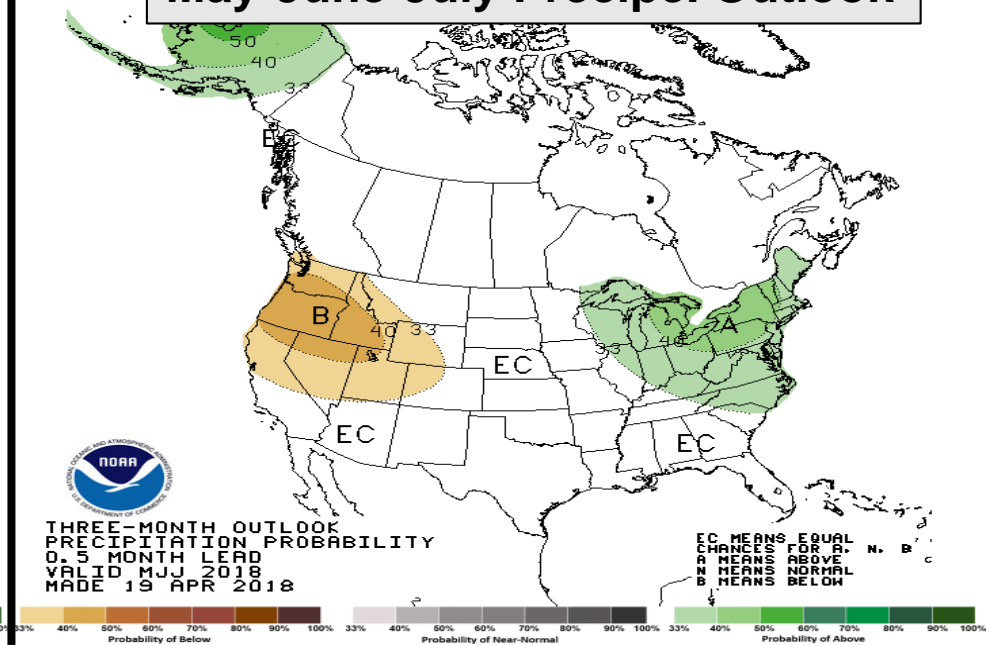
May-June-July Temperature Outlook



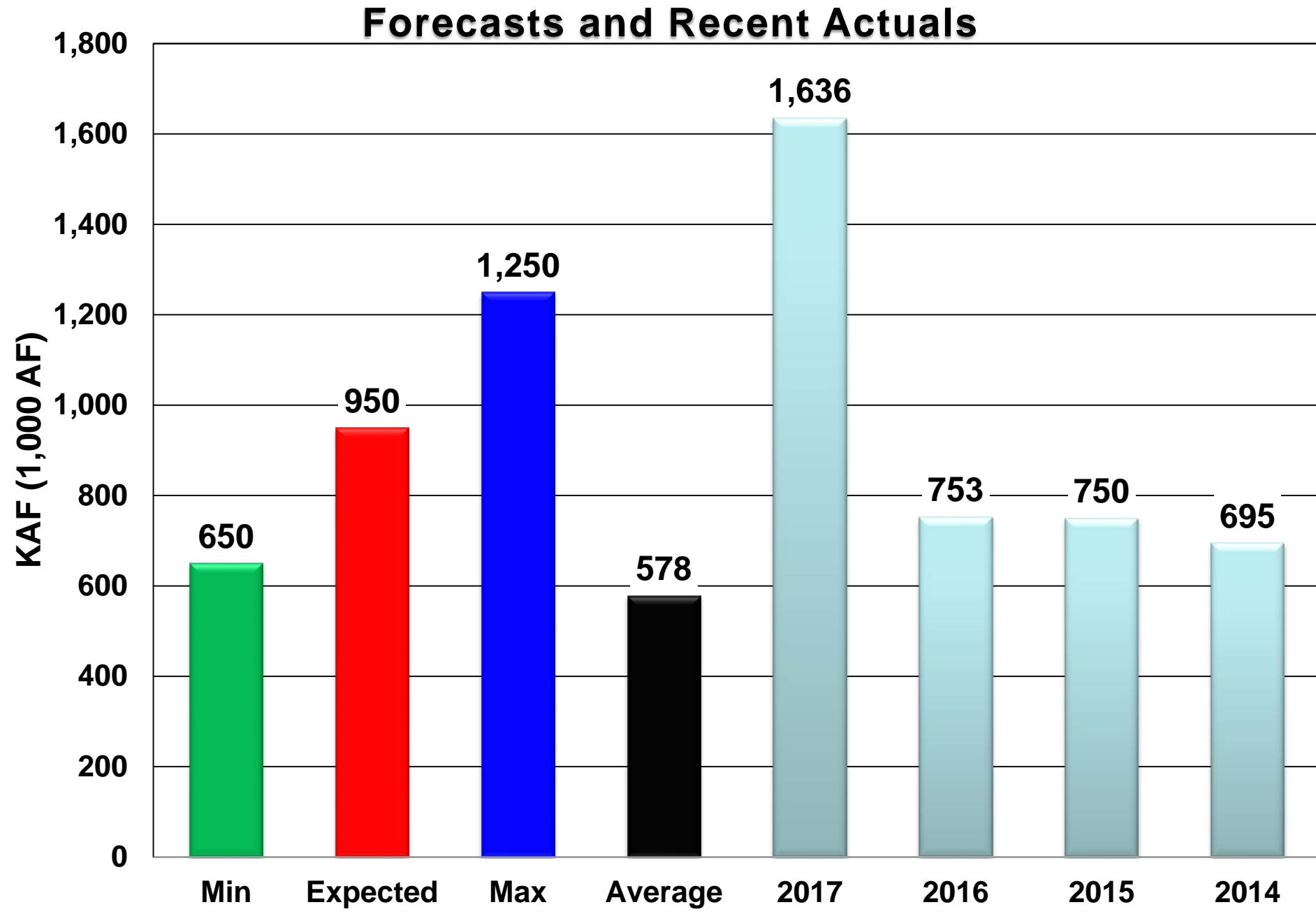
May Precip. Outlook



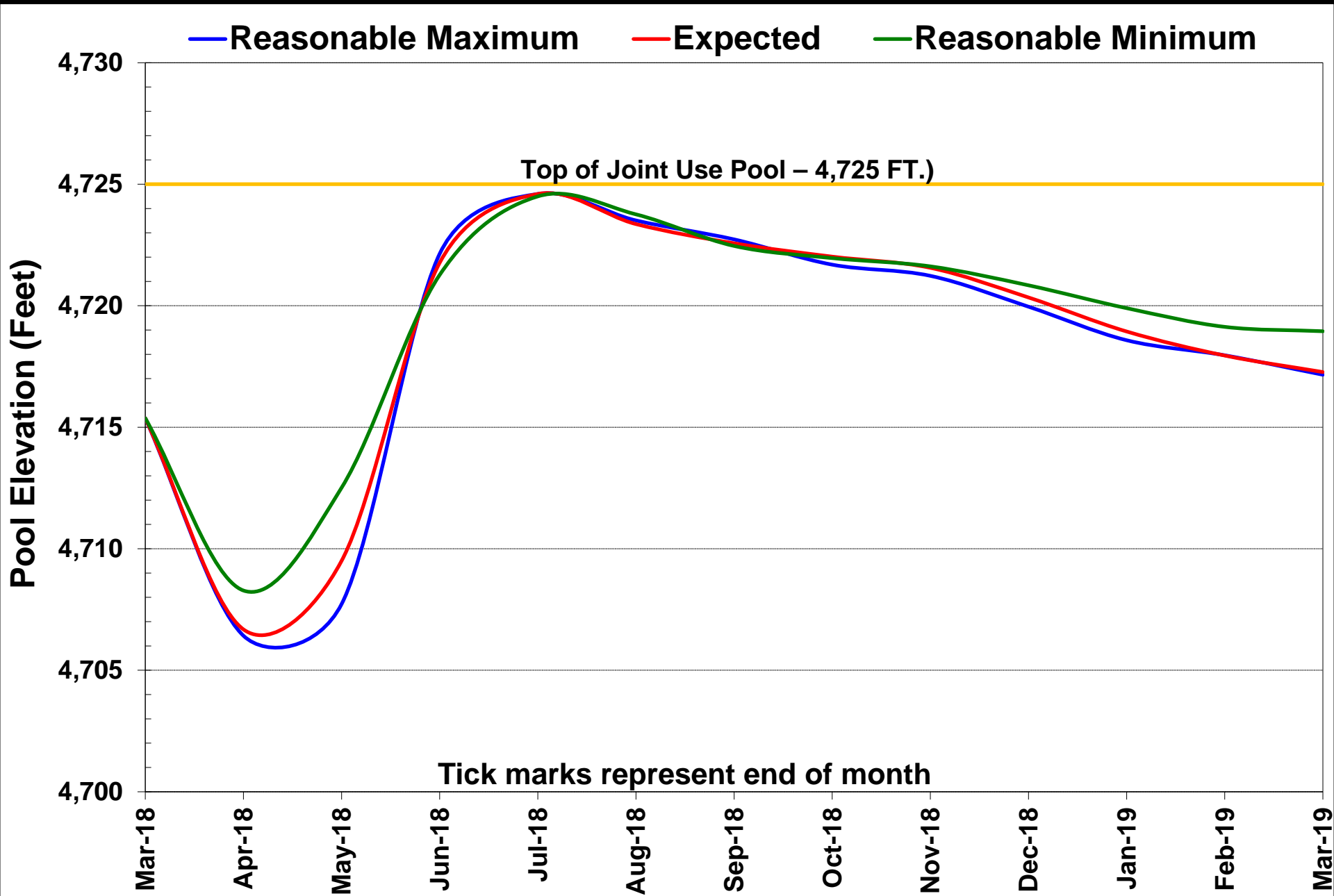
May-June-July Precip. Outlook



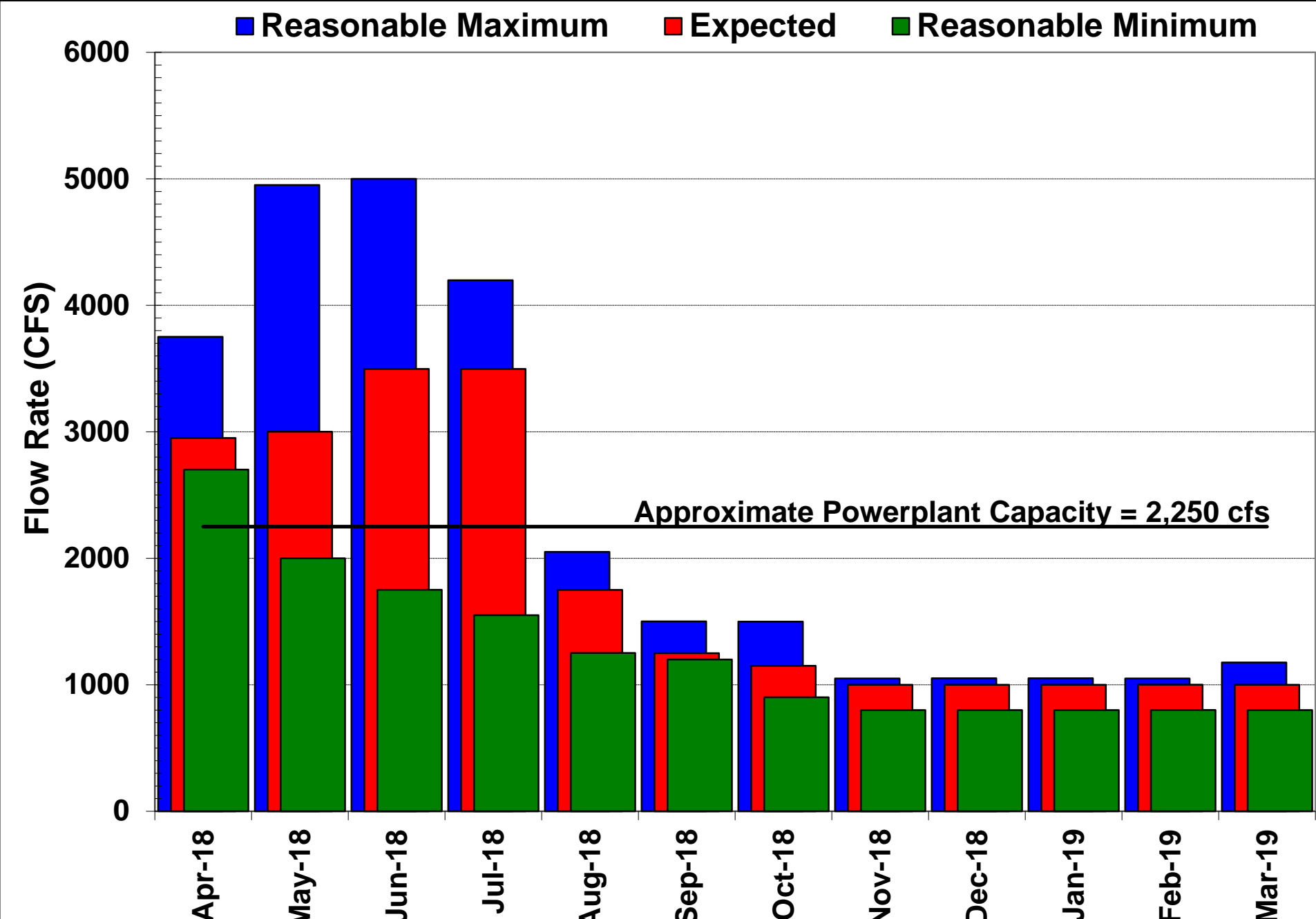
Boysen – April-July Inflow Volume Forecasts (KAF)



Boysen Reservoir – Projected Pool Elevations



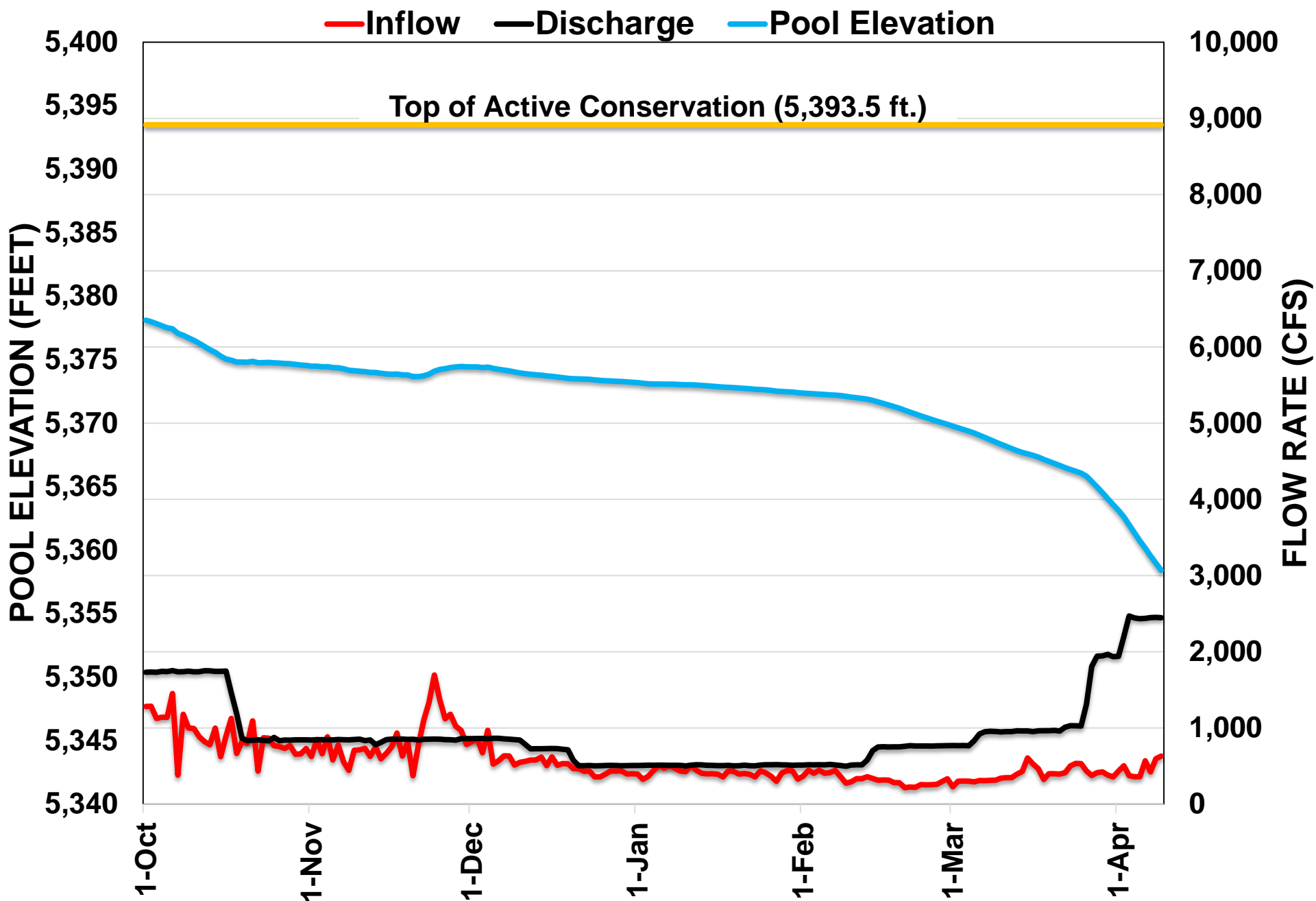
Boysen Reservoir – Projected River Flow Rates



Buffalo Bill Reservoir



Buffalo Bill Reservoir – W.Y.T.D Inflow/Release/Pool Elev.

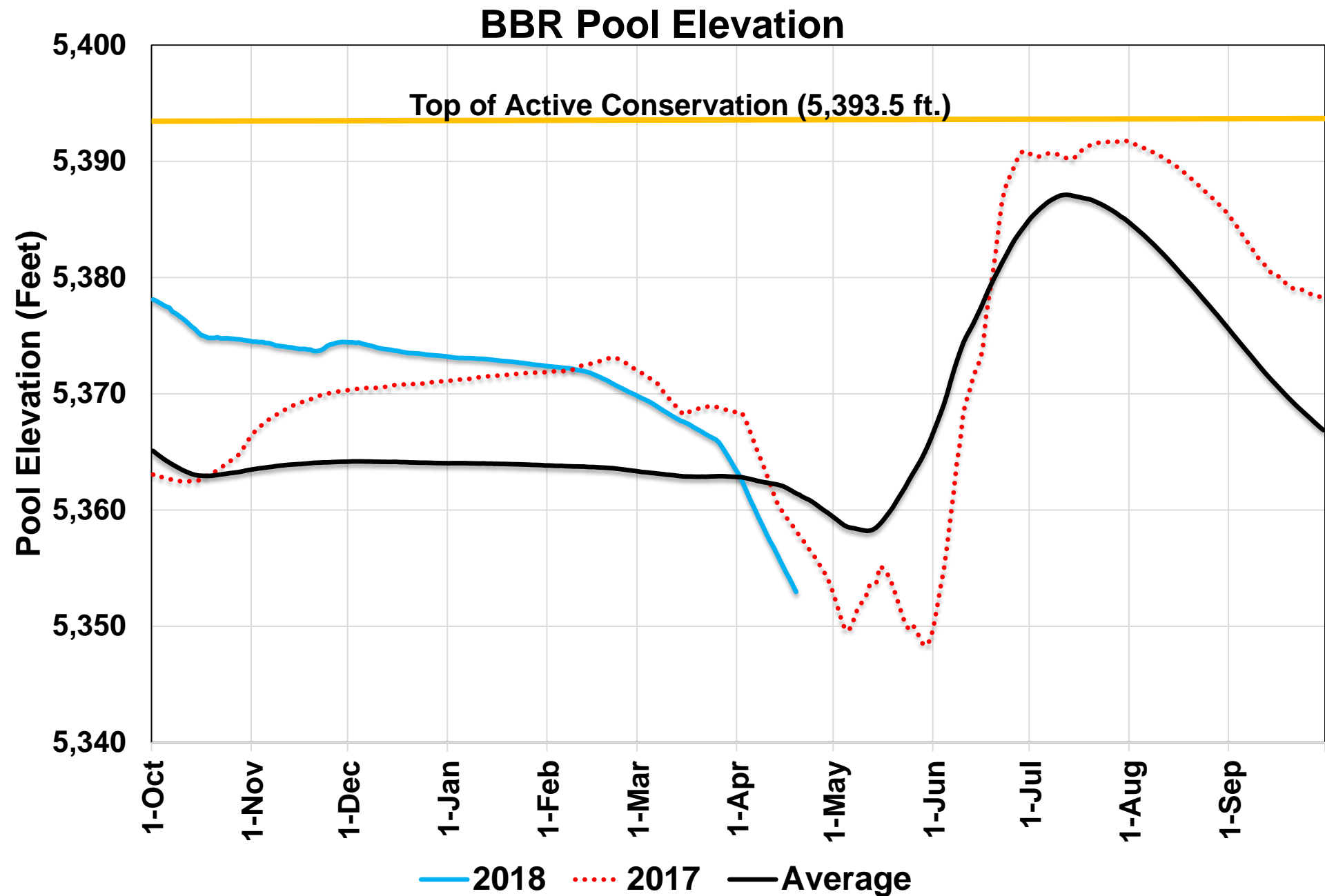


Buffalo Bill Reservoir – WY 18 Conditions to Date

- Infow Volumes (POR 1913-2017)
 - Oct 17: 3rd Highest
 - Nov 17: 2nd Highest
 - Dec 17: New Record*
 - Jan 18: 3rd Highest
 - Feb 18: 10th Highest
 - Mar 18: 15th Highest
 - Oct 1 through Mar 1: New Record*
 - Oct 1 through April 1: 2nd (Behind 2017)
 - Currently ~ 54% full and the river release being increased to 3,000 cfs on April 24th.

RECLAMATION

BBR Pool Elevation – 2018 vs 2017 and Average (93-17)

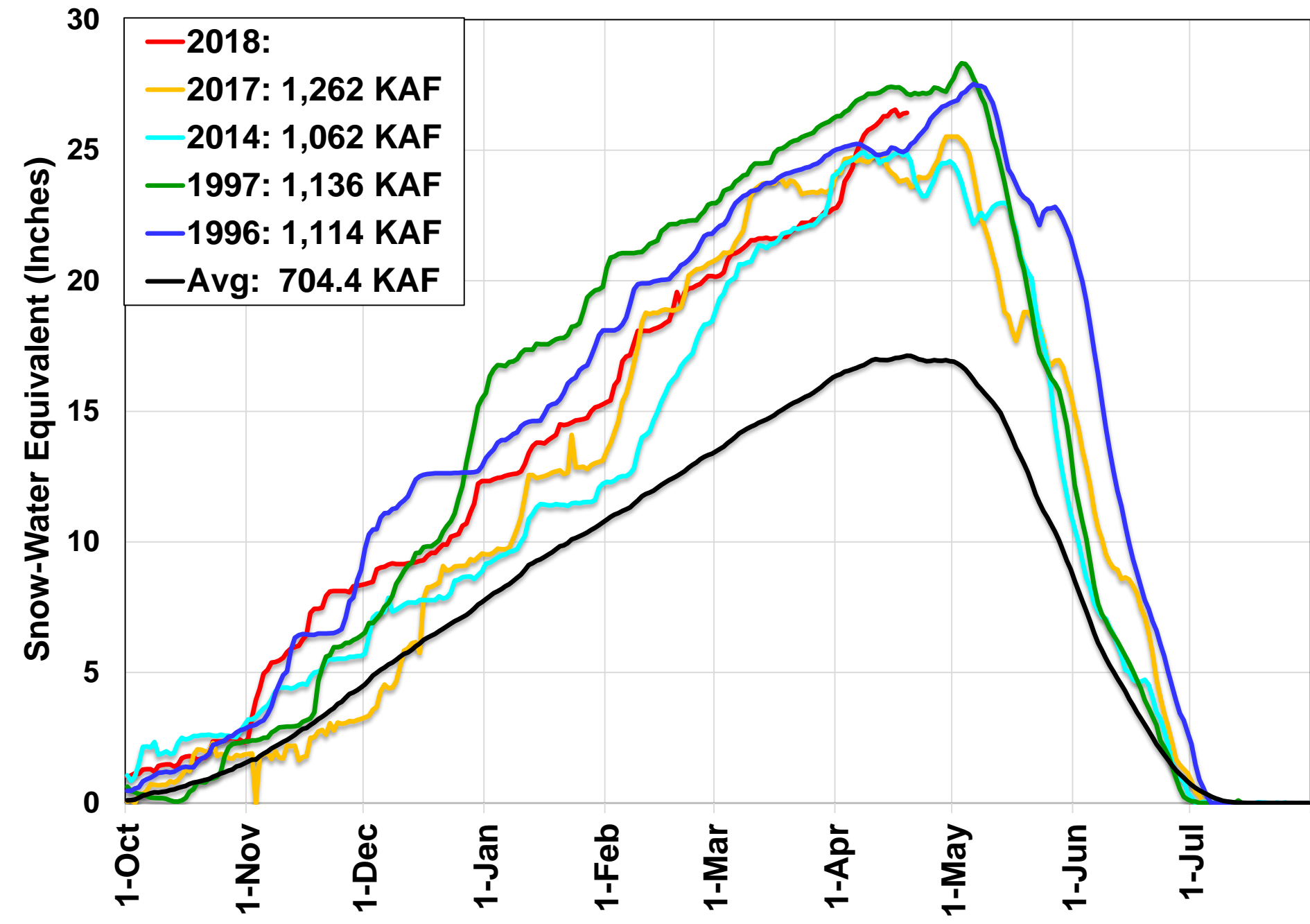


Buffalo Bill Snotel Composite

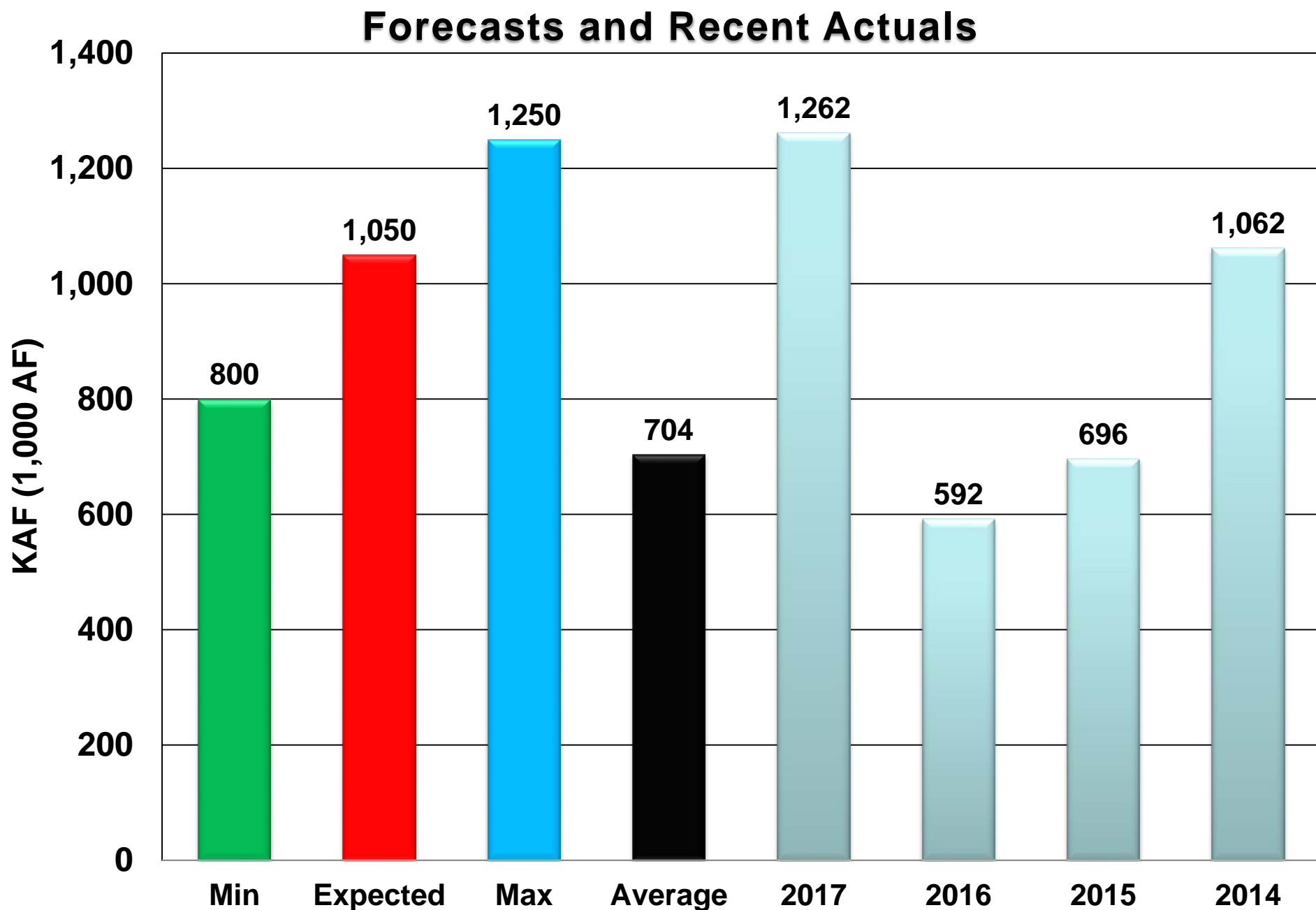
April 18, 2018



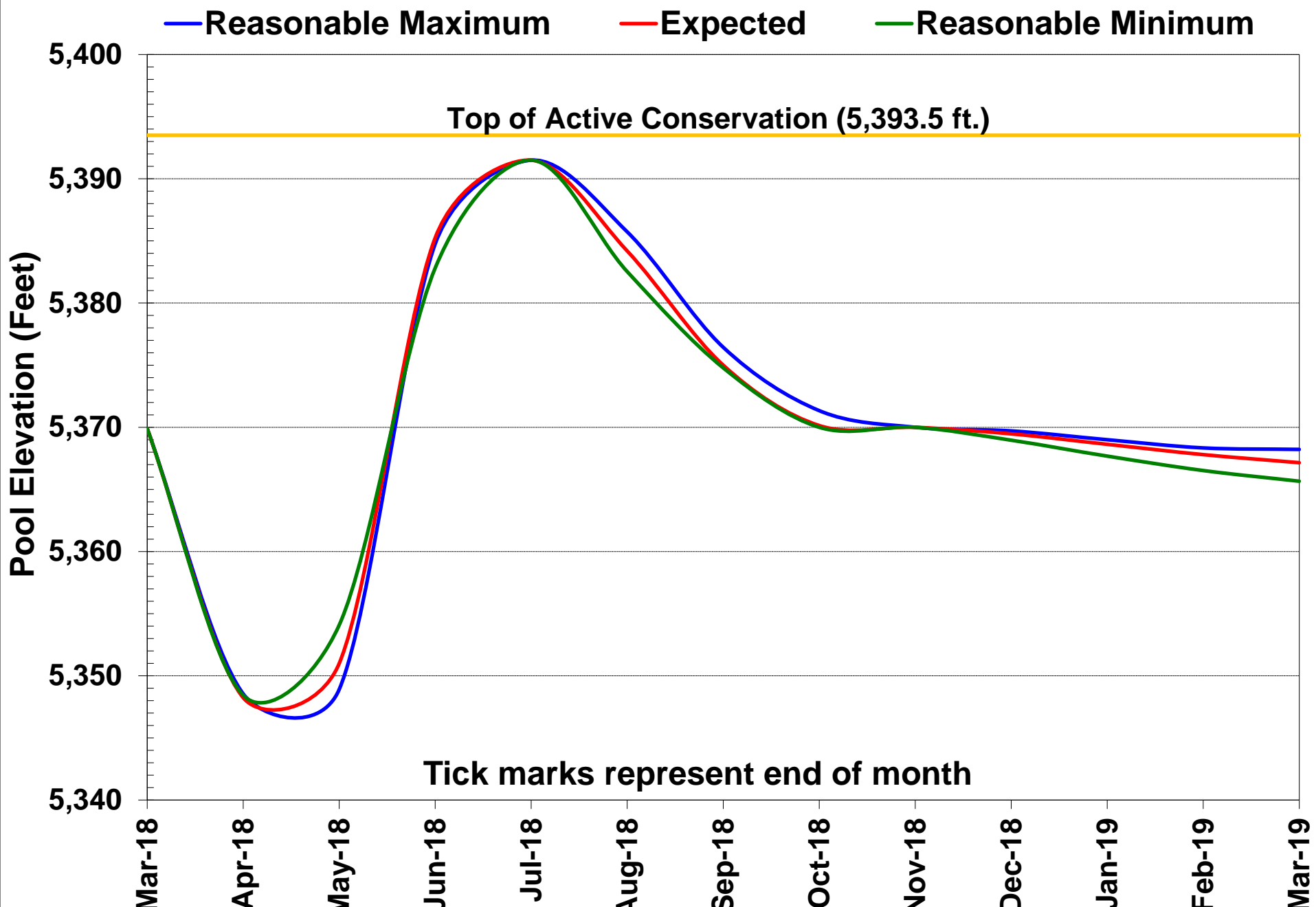
BBR SWE: 2018 vs. Similar Years and 30 Yr. Average



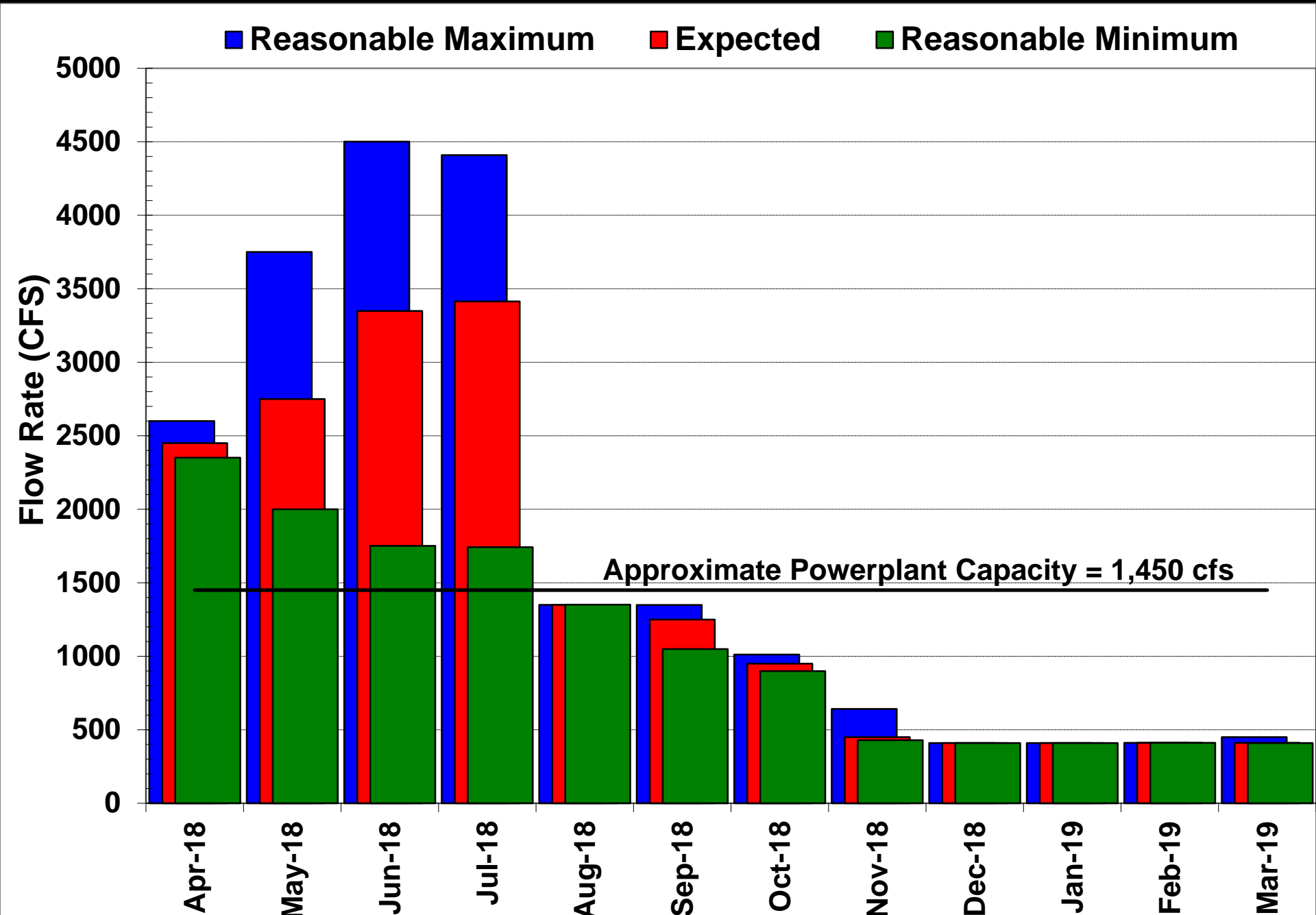
Buffalo Bill Reservoir – April-July Inflow Forecast (KAF)



Buffalo Bill – Projected Pool Elevations



Buffalo Bill – Projected River Flow Rates



Questions?

