

RECLAMATION

Managing Water in the West

Bighorn Basin Operations and Water Supply Meeting

April 13, 2017



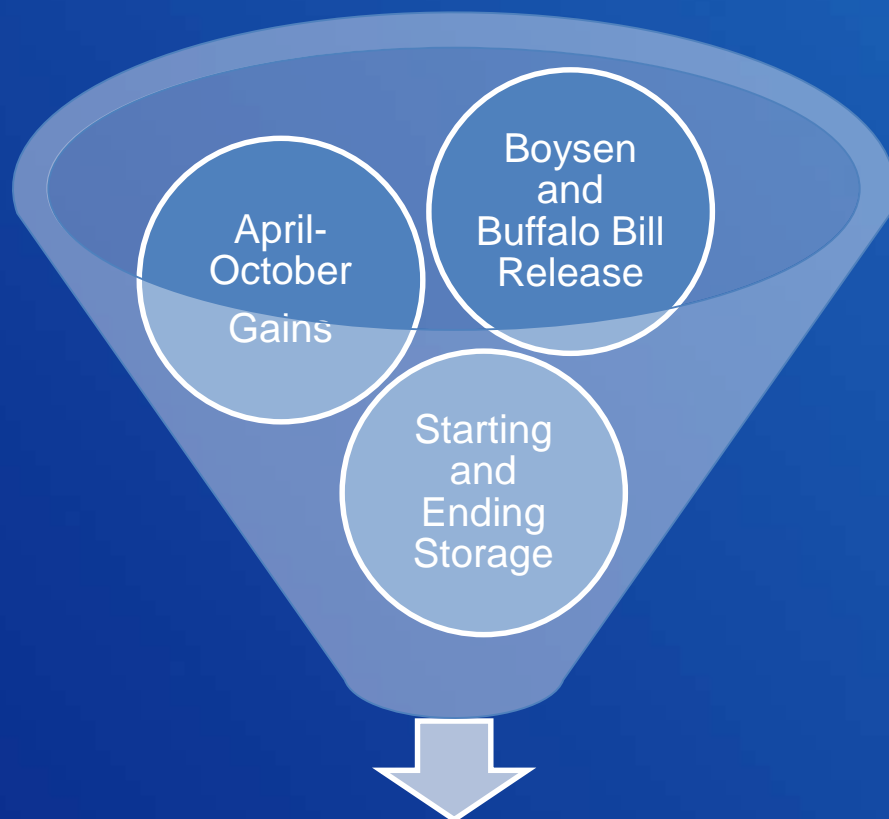
U.S. Department of the Interior
Bureau of Reclamation

Yellowtail Dam and Bighorn Lake Operations Review

RECLAMATION

Recap of Fall and Winter 2016/2017

Setting the Winter Release Rate

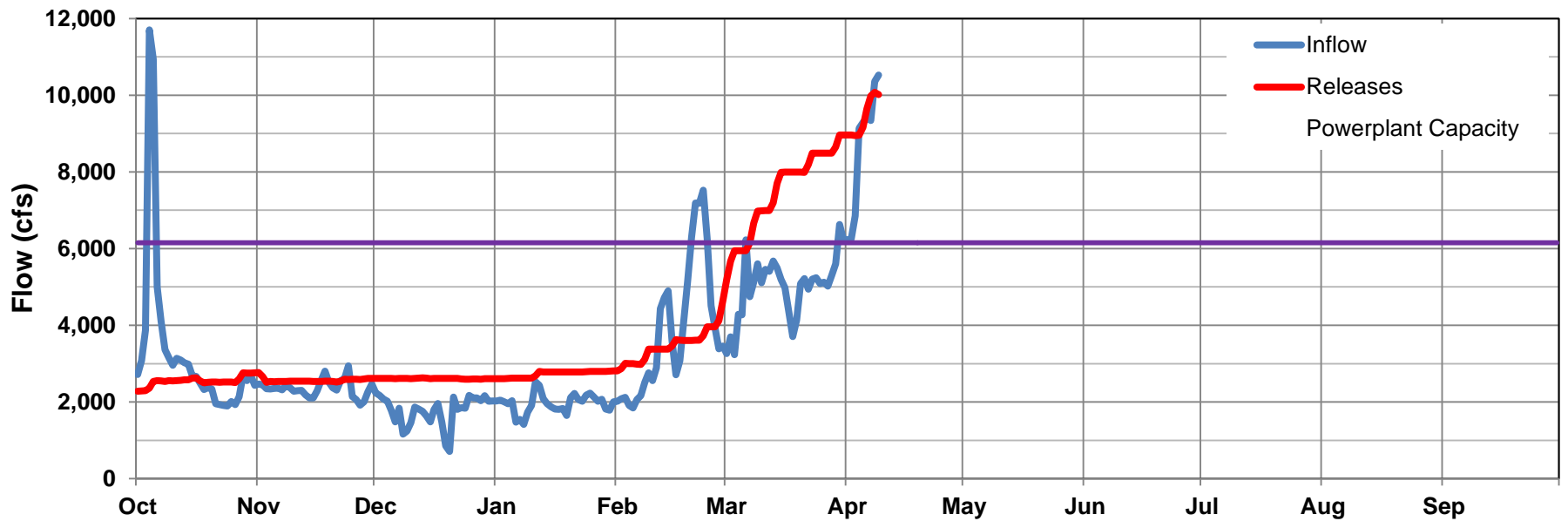
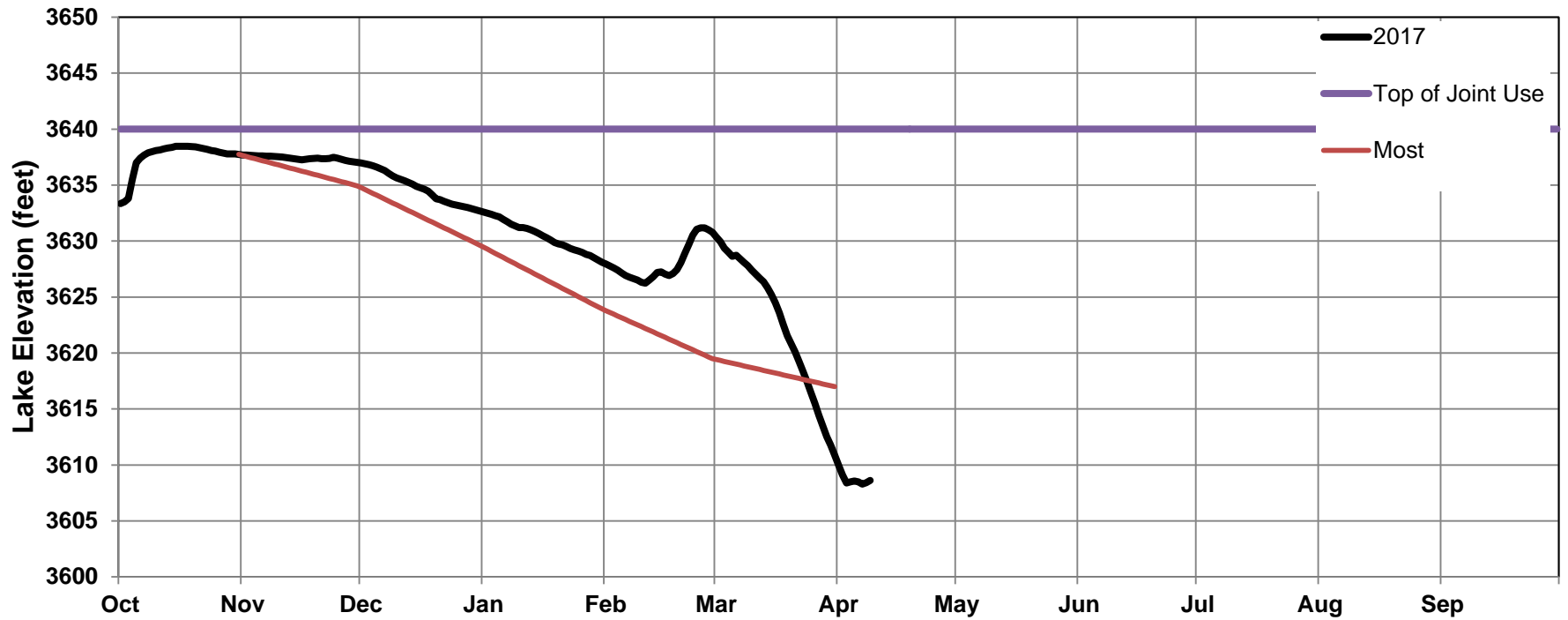


Winter Release Rate

2,610 cfs

RECLAMATION

Bighorn Lake Operations 2017



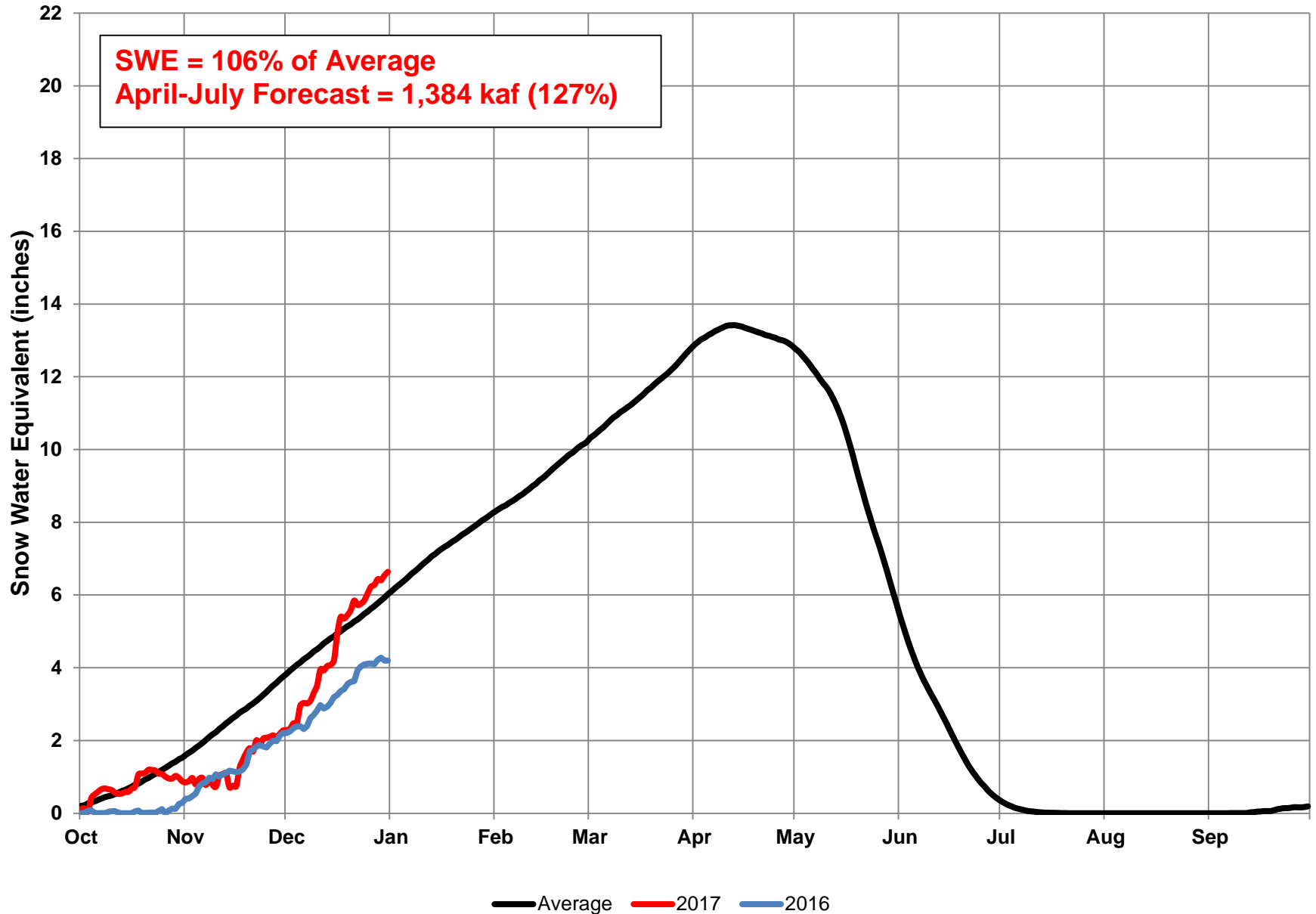
Snowpack



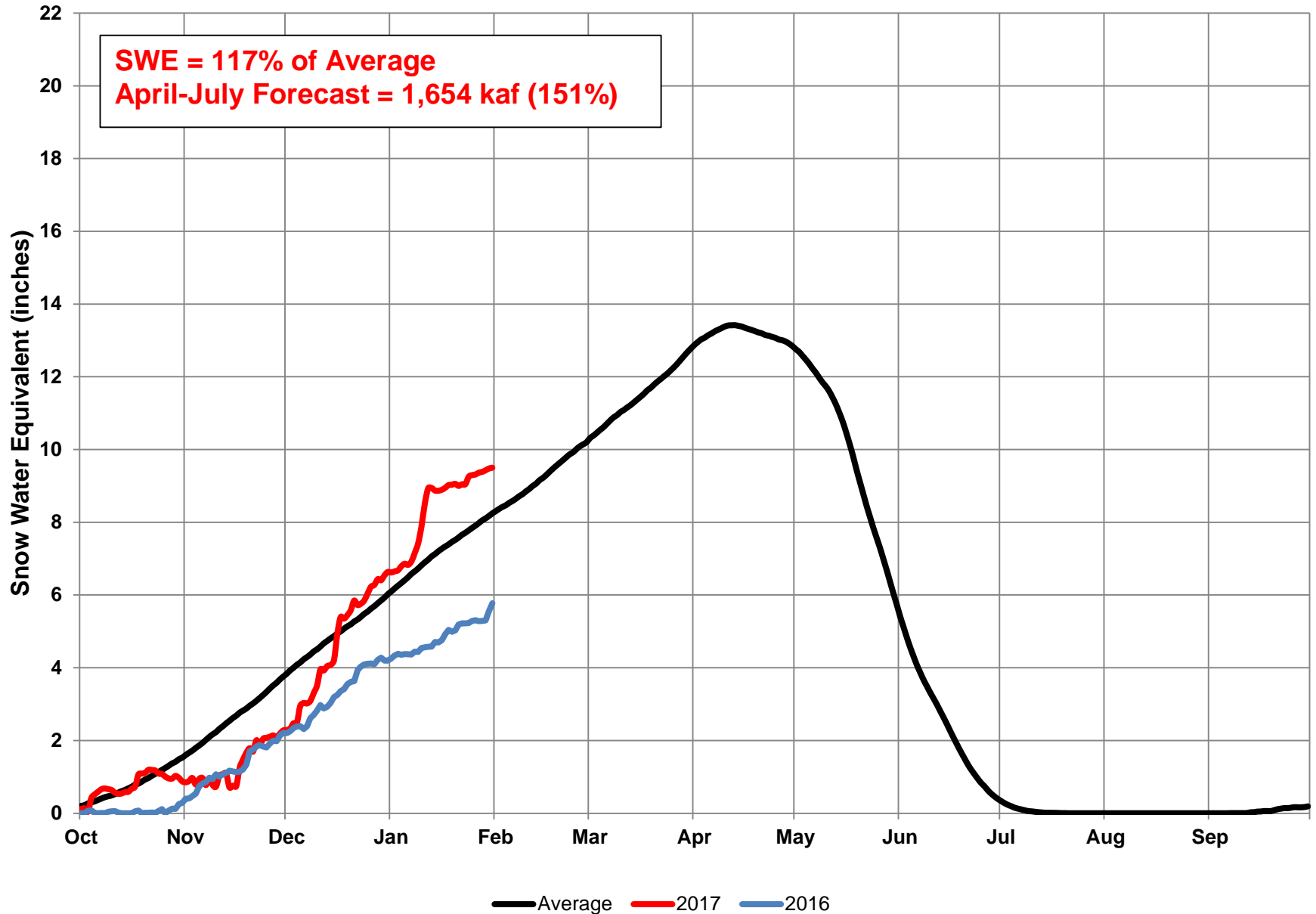
Photos by Ryan Miksell, WY SEO

RECLAMATION

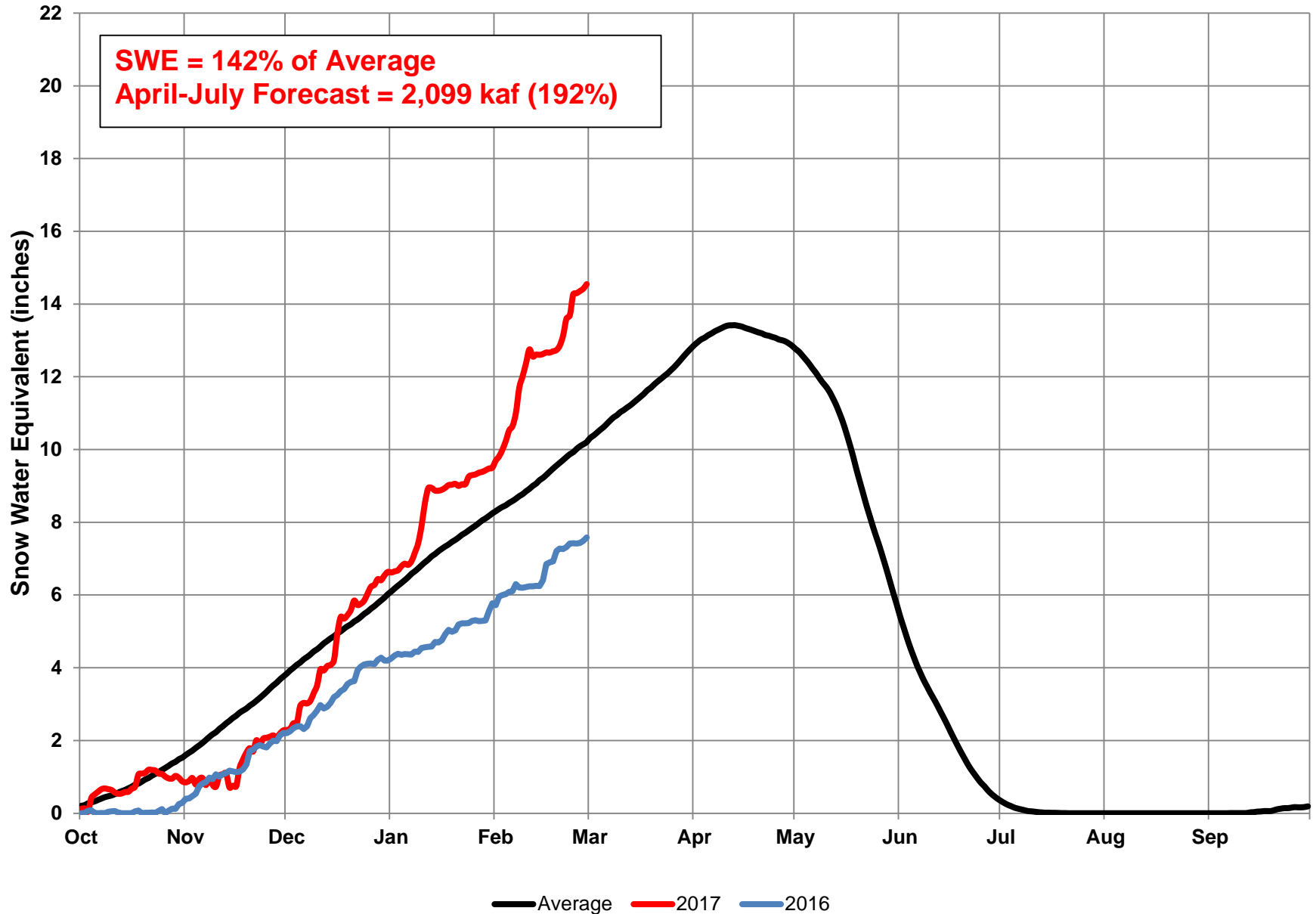
Mountain Snowpack on January 1



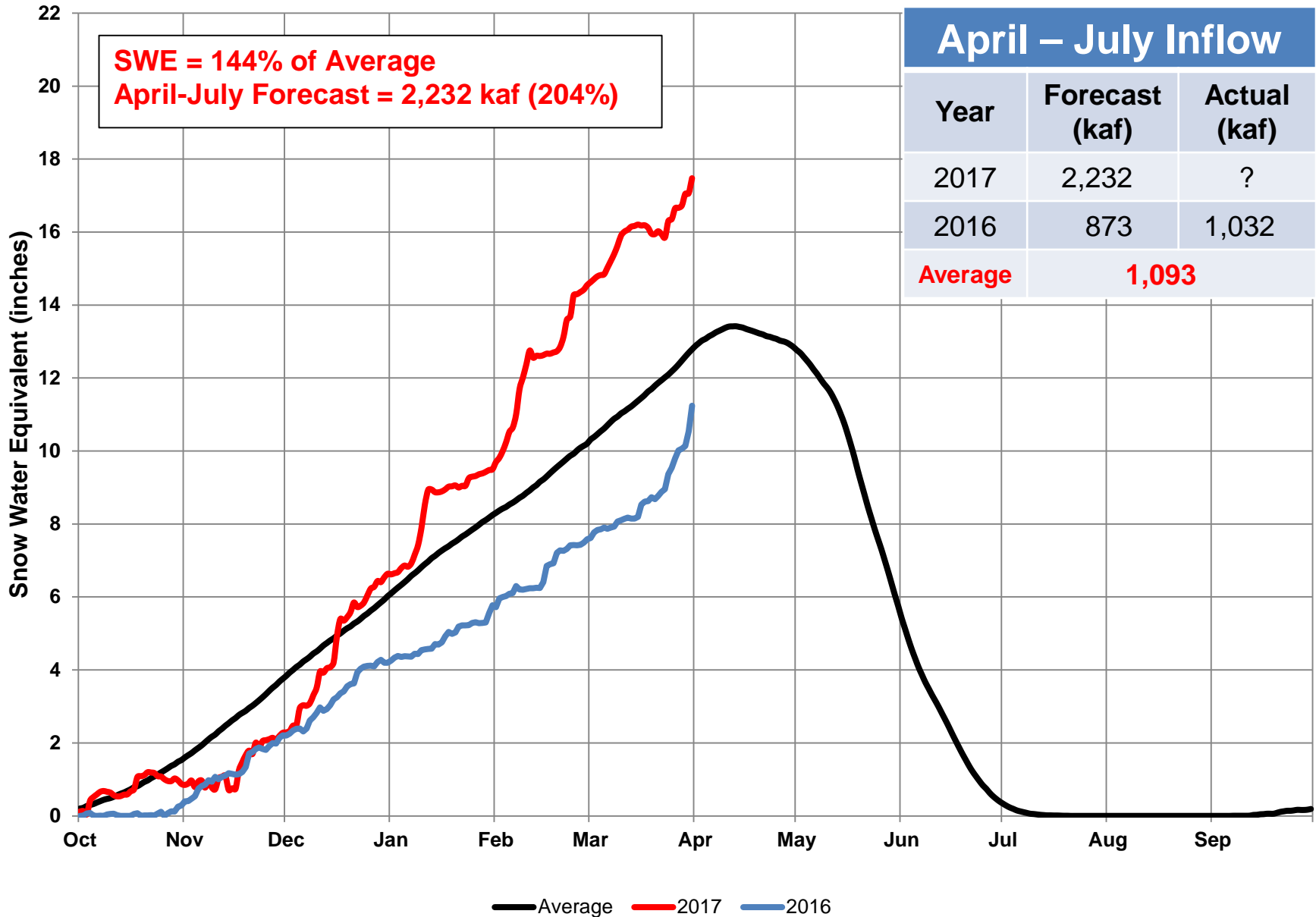
Mountain Snowpack on February 1



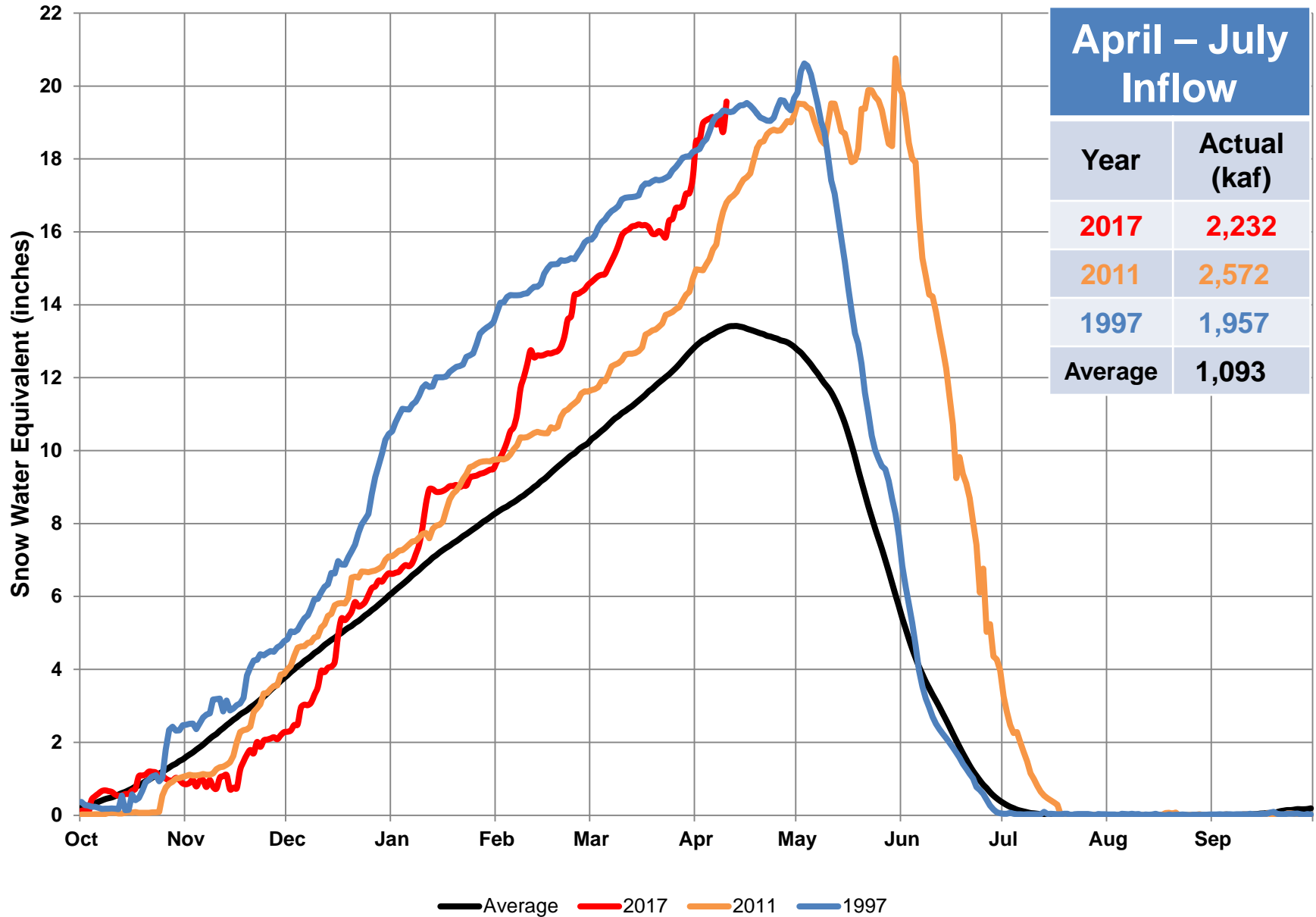
Mountain Snowpack on March 1



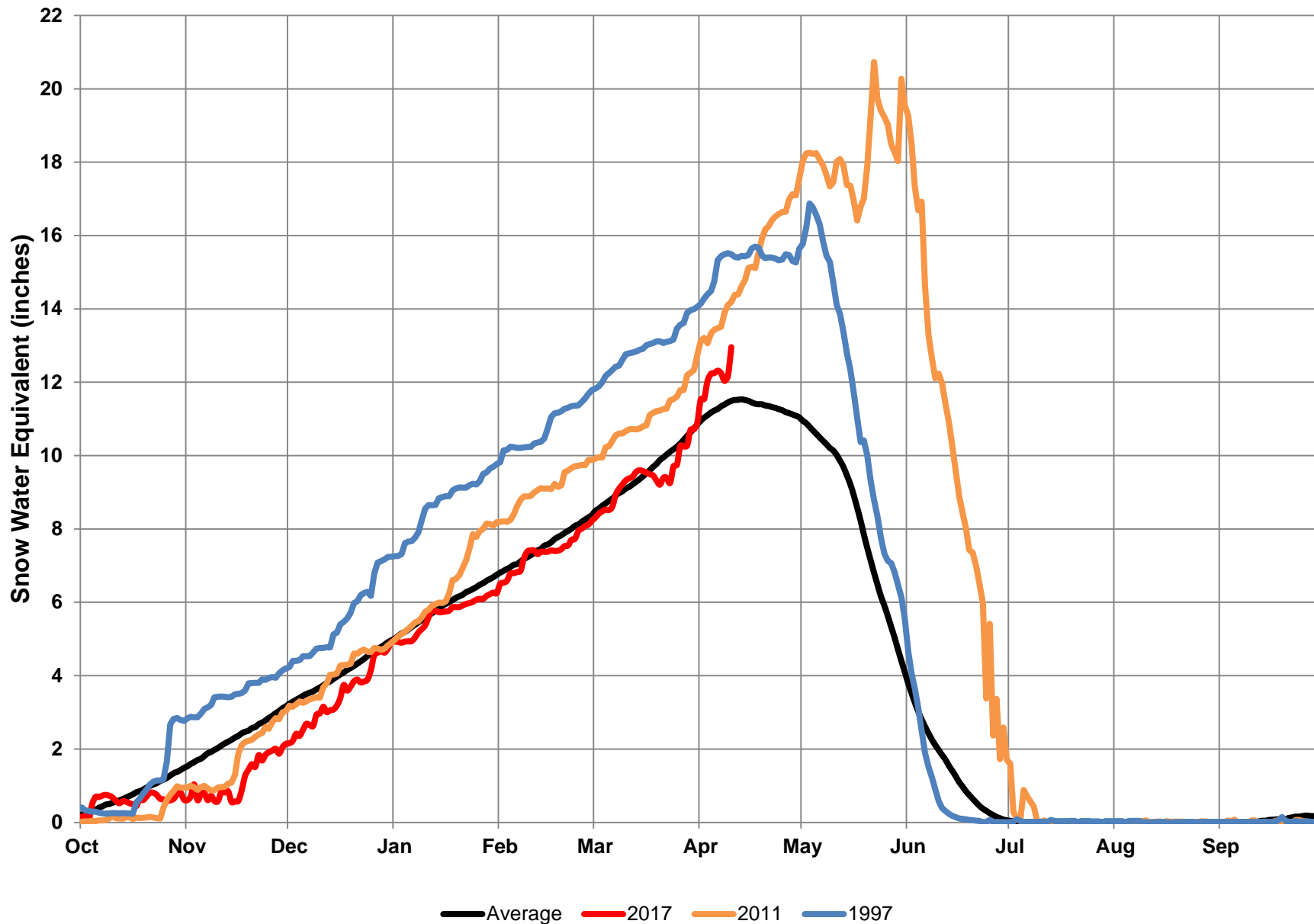
Mountain Snowpack on April 1



Mountain Snowpack on April 10



Mountain Snowpack in Bighorn Mountains on April 10

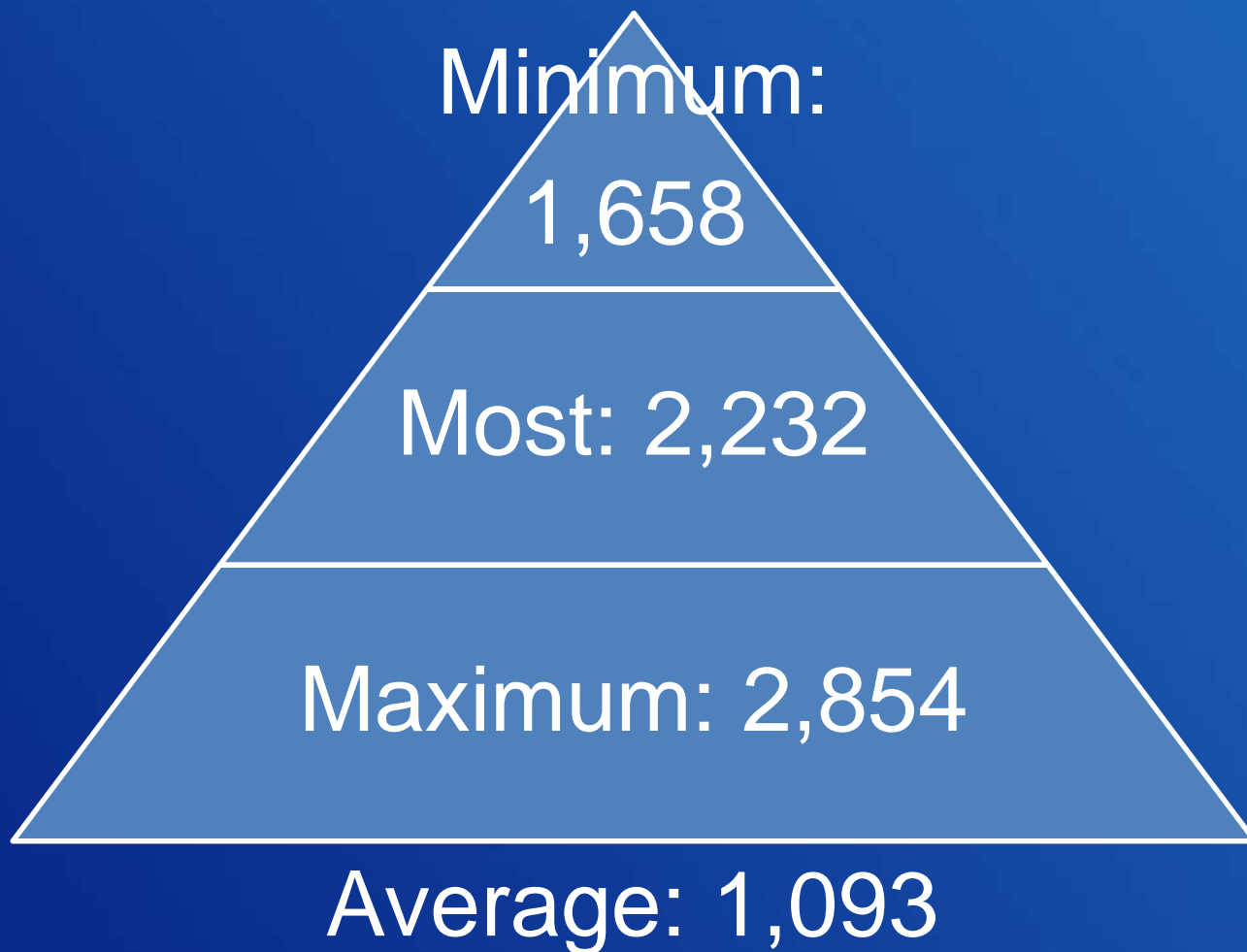


2017 Outlook

RECLAMATION

Bighorn Lake April – July Forecast

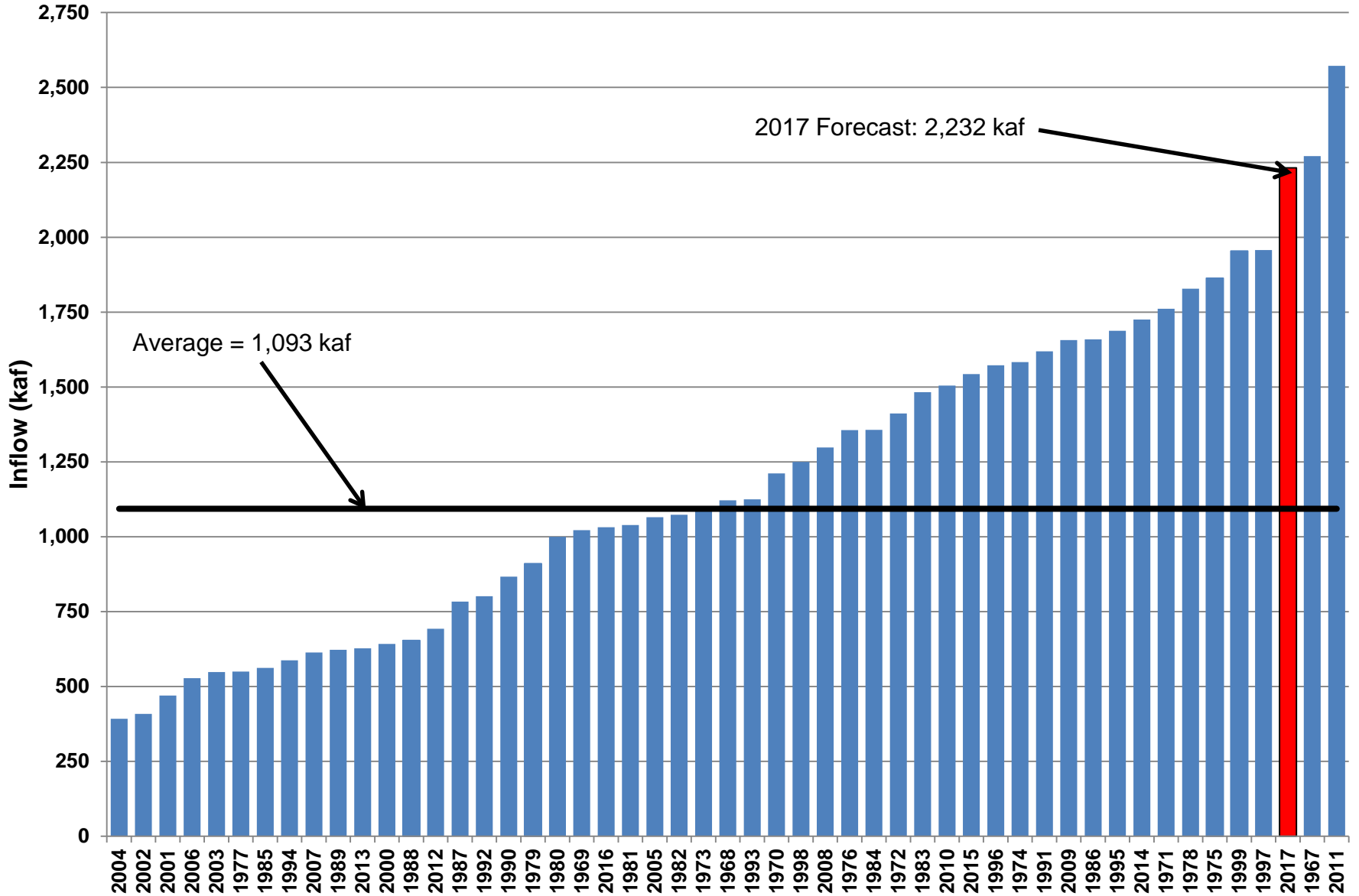
Thousands of Acre-feet



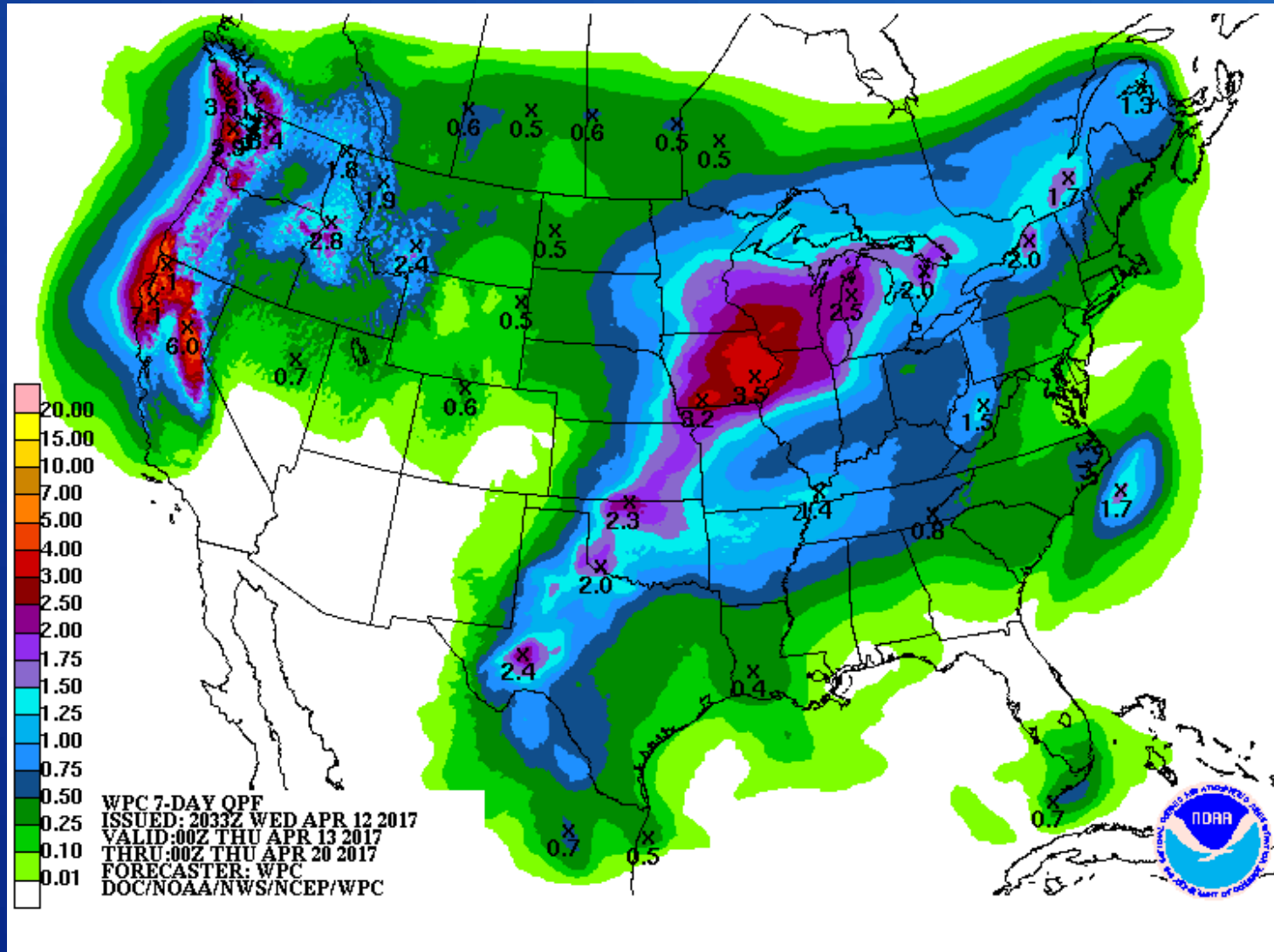
RECLAMATION

Bighorn Lake April through July Inflow

Period of Record 1967-2016

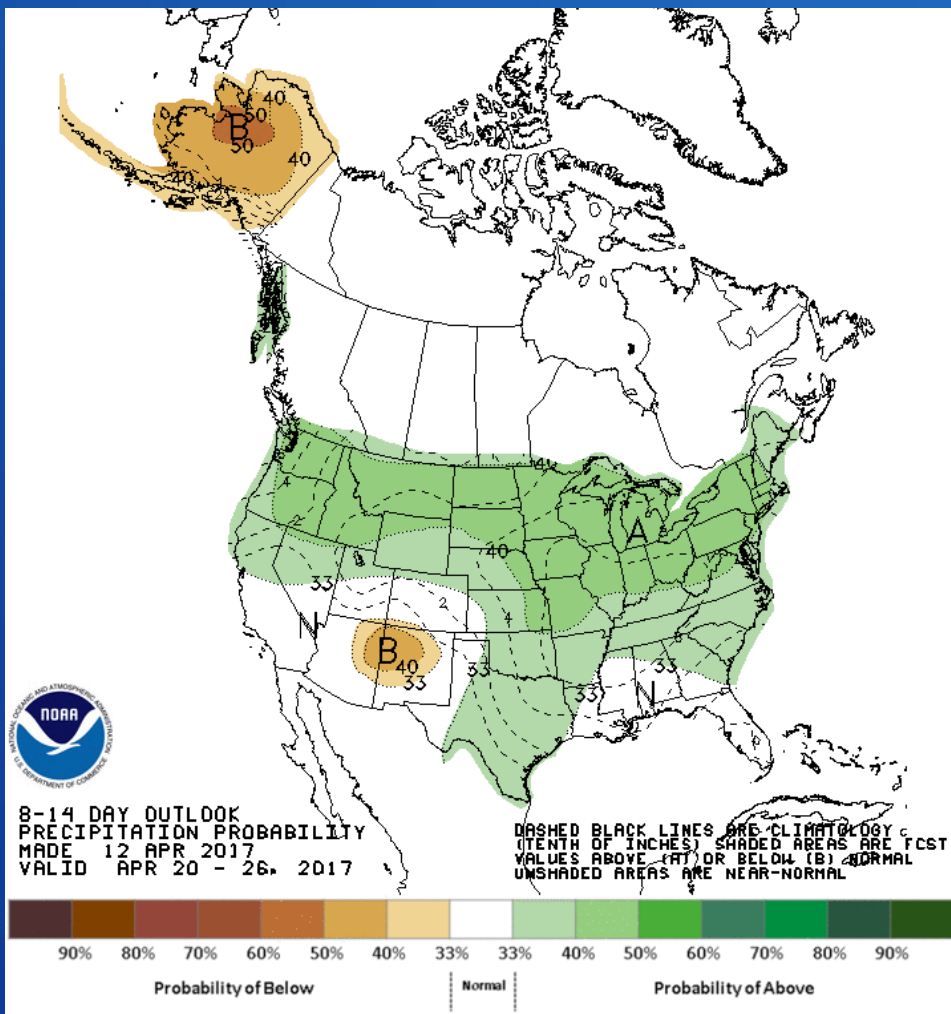
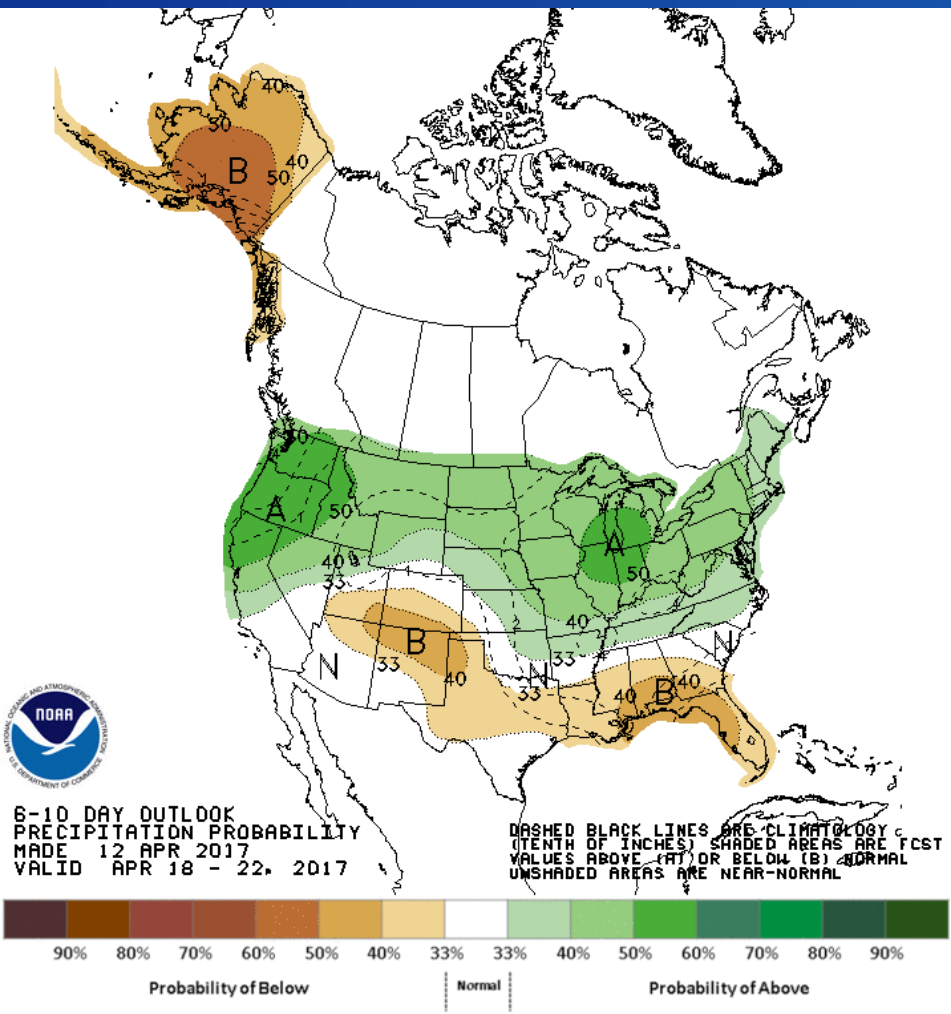


2017 Outlook



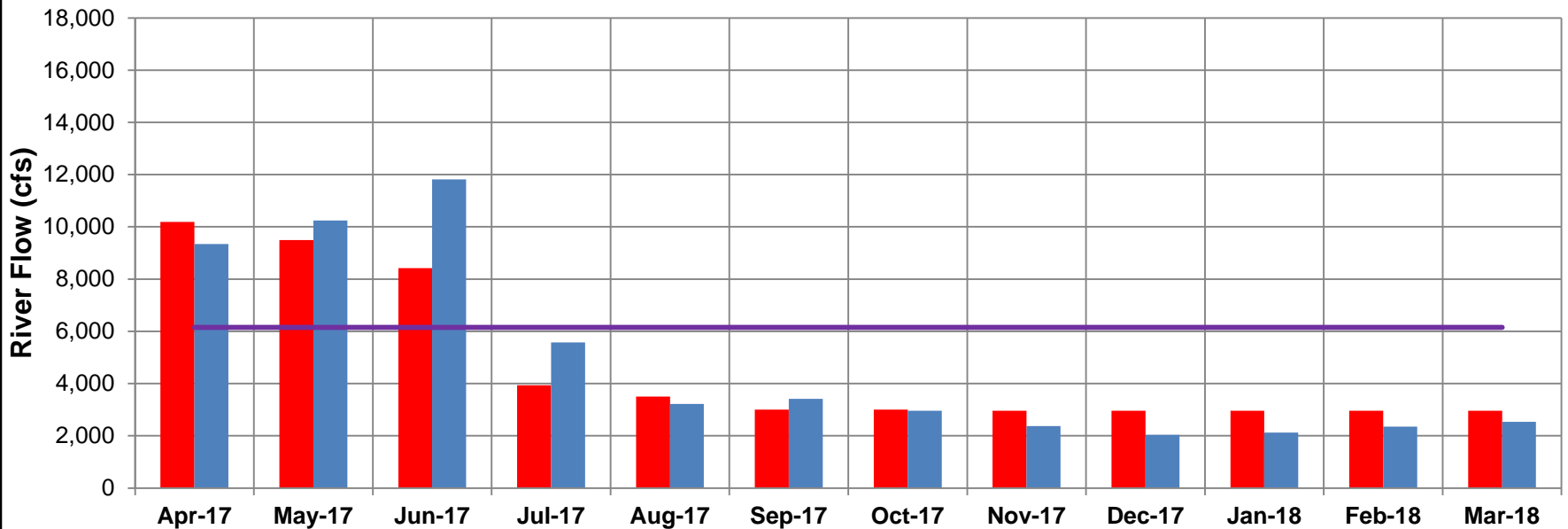
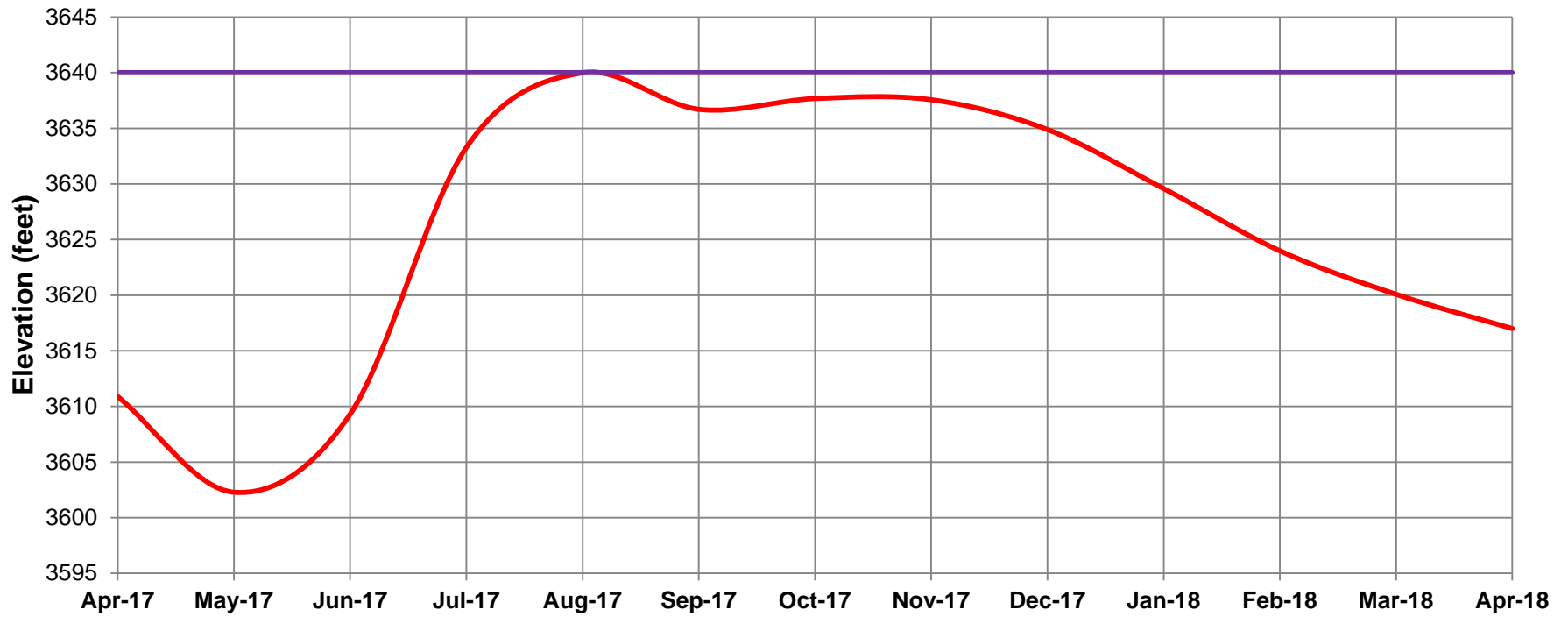
RECLAMATION

2017 Outlook

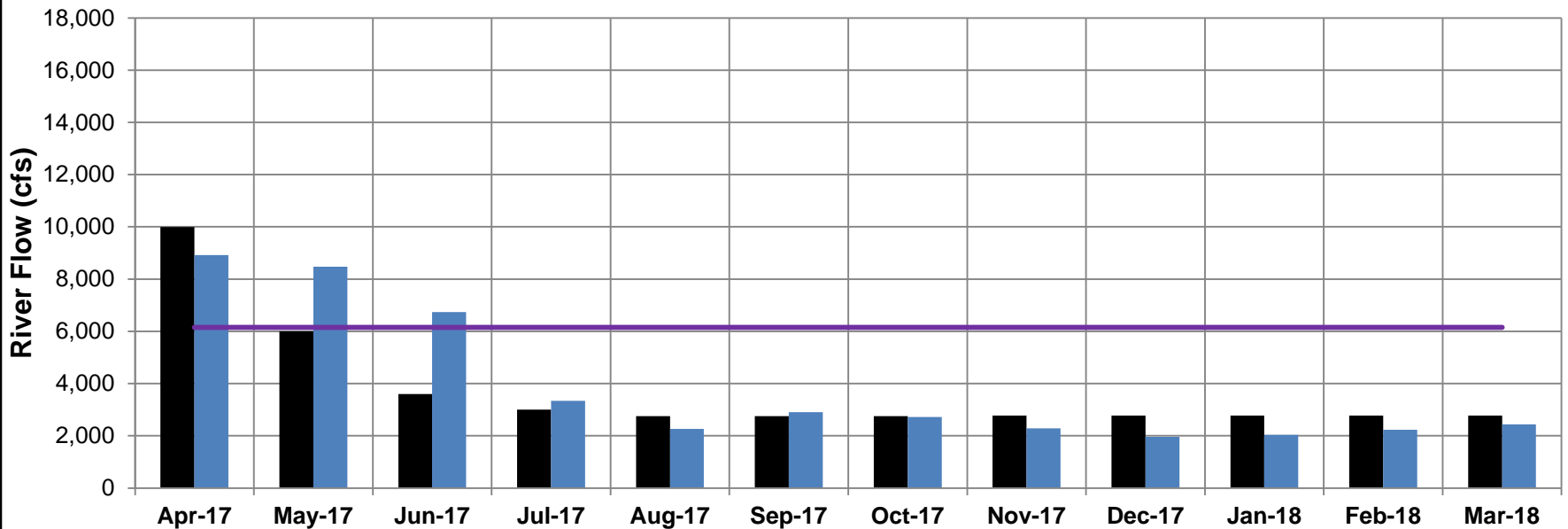
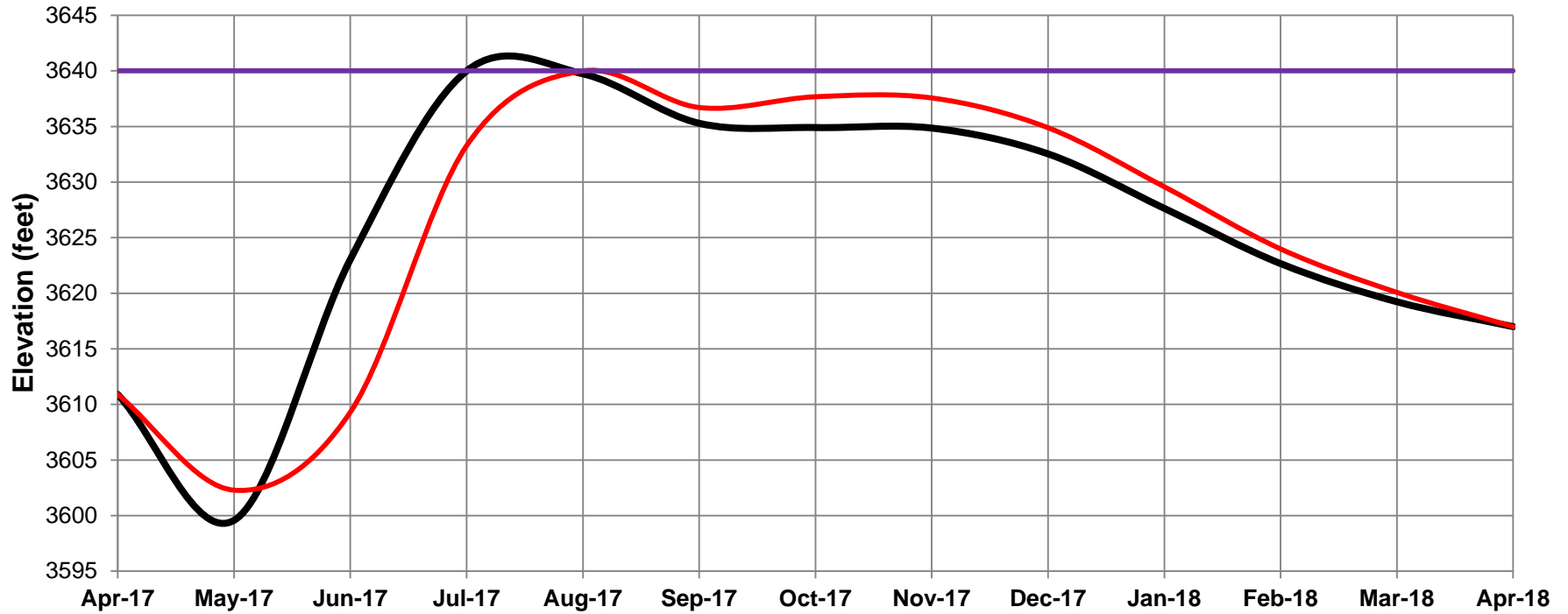


RECLAMATION

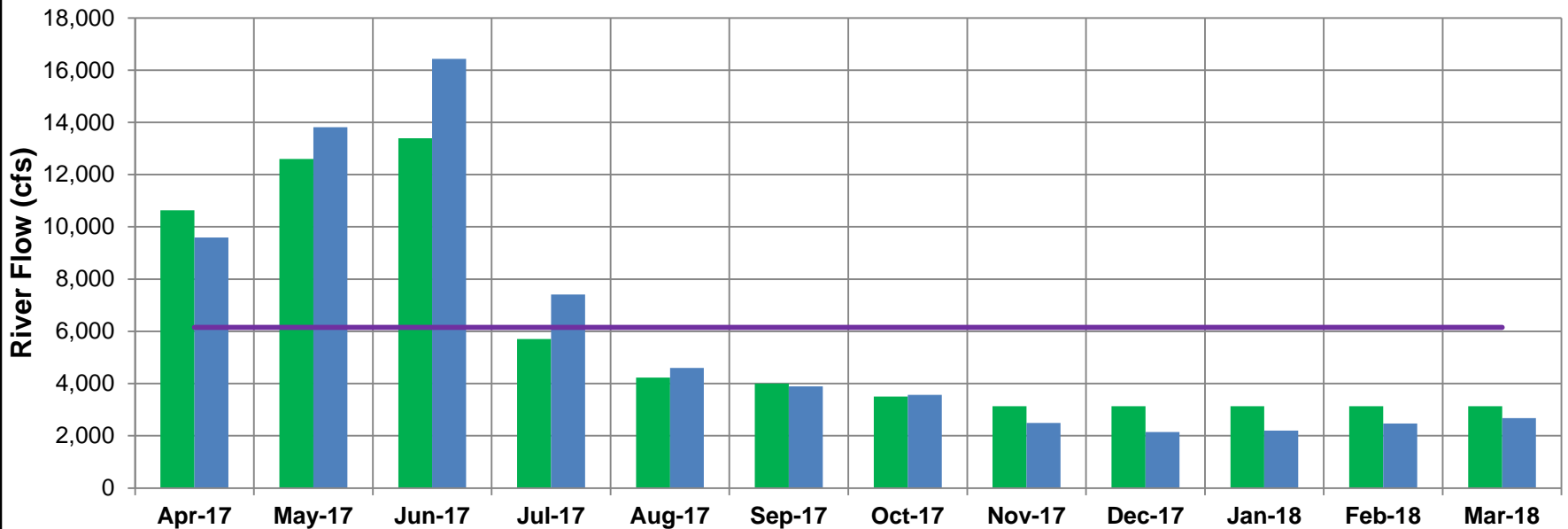
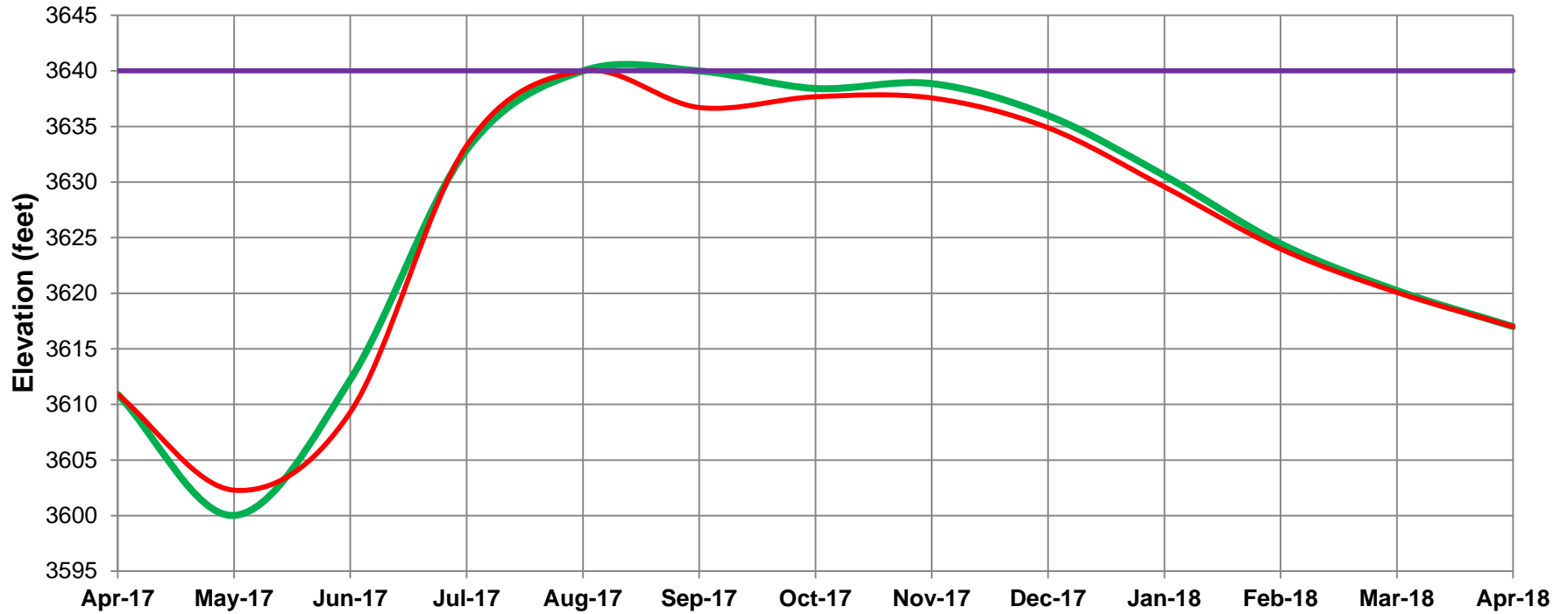
Most Probable Inflow Operations



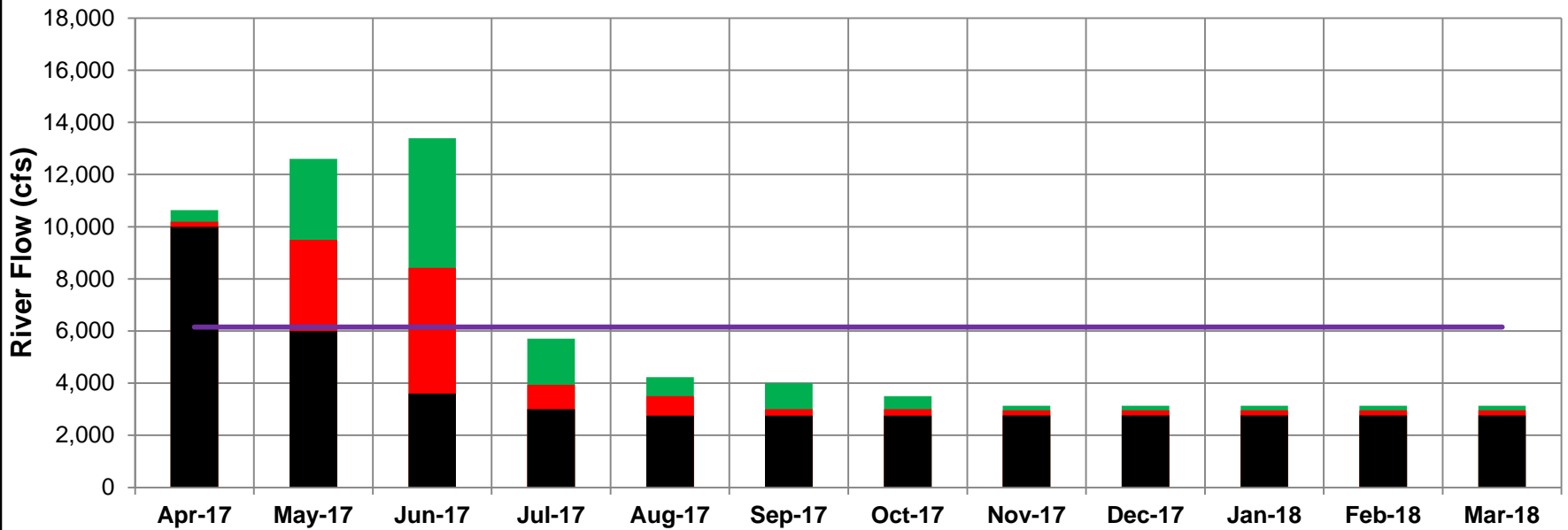
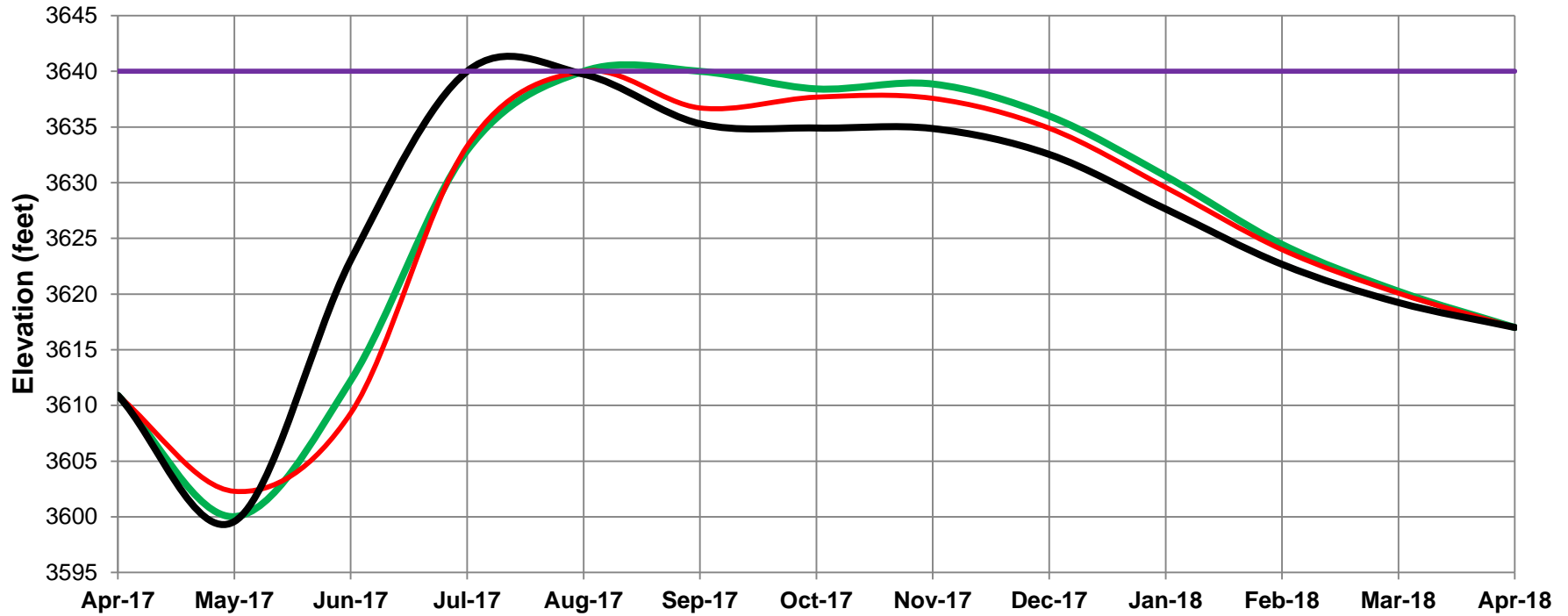
Most and Minimum Probable Inflow Operations



Most and Maximum Probable Inflow Operations



Most, Minimum, and Maximum Probable Inflow Operations



Questions and Feedback

An aerial photograph of a large dam and reservoir. The dam is a long, concrete structure with a spillway on the right side. The reservoir is a large body of water behind the dam. The surrounding landscape is hilly and rocky. A blue semi-transparent overlay covers the top and middle portions of the image, containing white text.

The information presented at this meeting can be found on the Montana Area Office website at:

www.usbr.gov/gp/mtao/yellowtail/index.html