

RECLAMATION

Managing Water in the West

Bighorn Reservoir Operations Meeting

**Coleman Smith
Area Manager
Wyoming Area Office
November 7, 2013**



Wyoming Area



P.O. Box 1630
Mills, WY 82644-1630
(307) 261-5671
fax: (307) 261-5683

Nebraska

Inland Lakes

Scottsbluff

Lake
McConaughy

Cheyenne

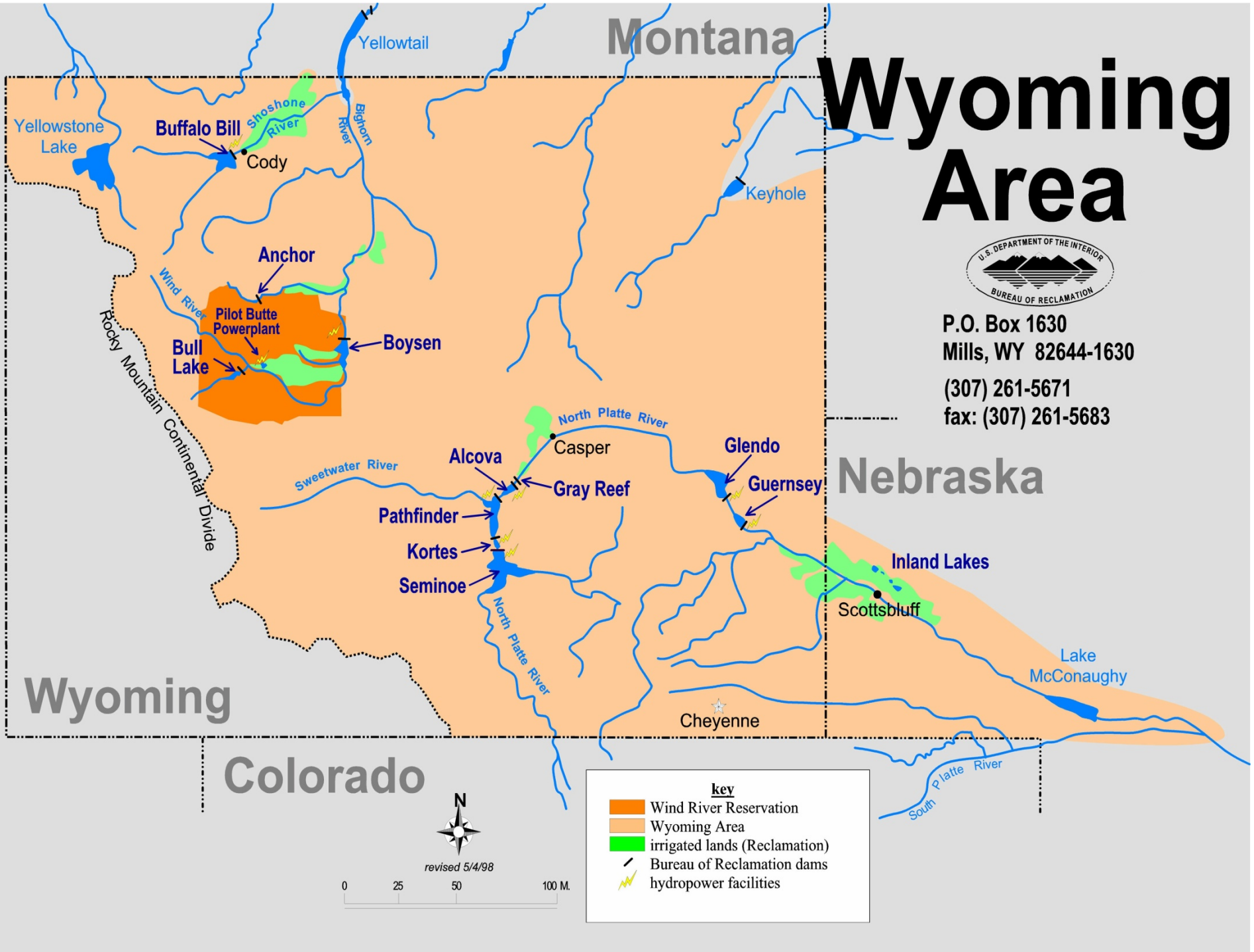
Montana

Yellowtail

Keyhole

Colorado

Wyoming



key

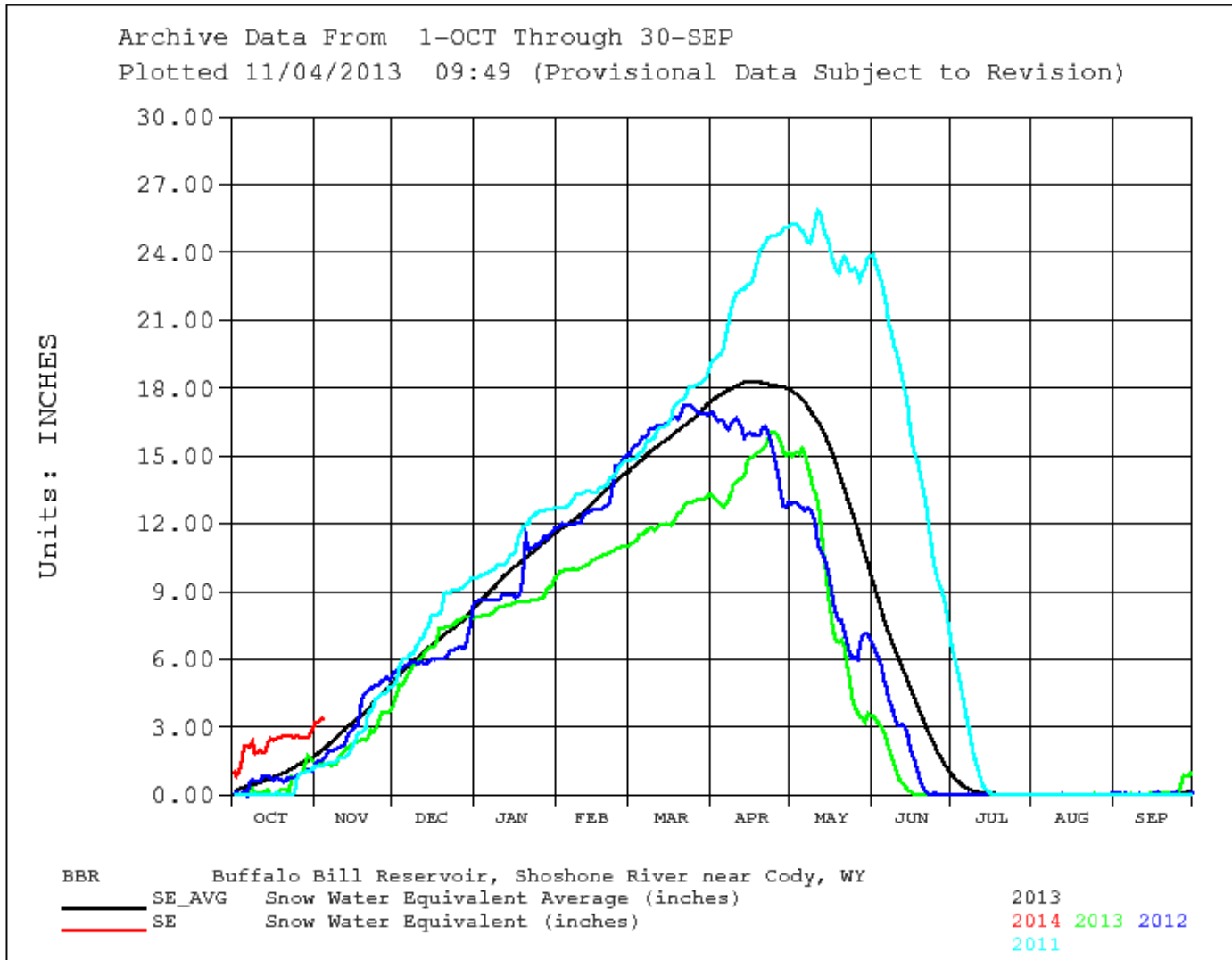
- Wind River Reservation
- Wyoming Area
- irrigated lands (Reclamation)
- Bureau of Reclamation dams
- hydropower facilities



revised 5/4/98

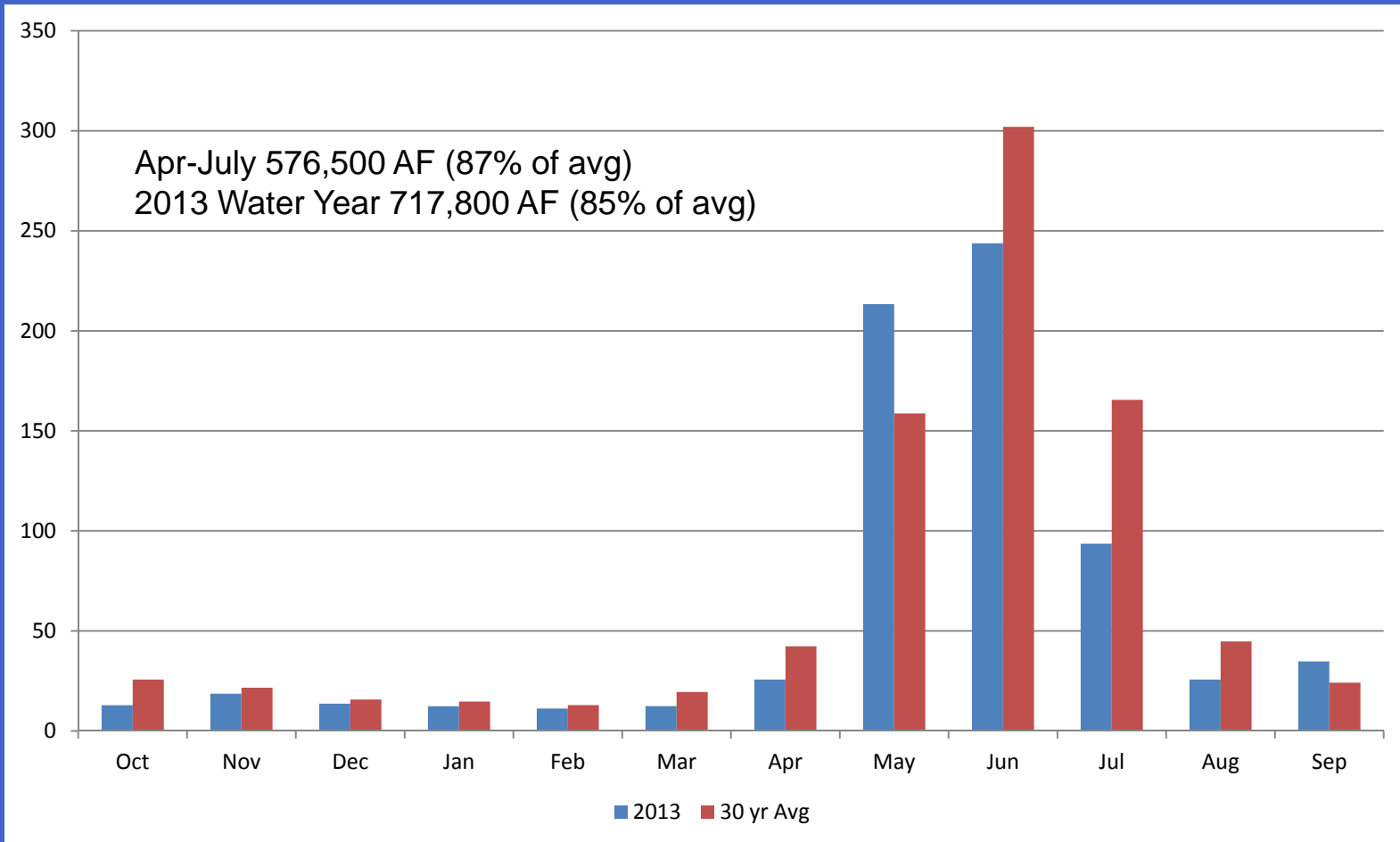
0 25 50 100 M.

Basin above Buffalo Bill Reservoir Snow Water Equivalent



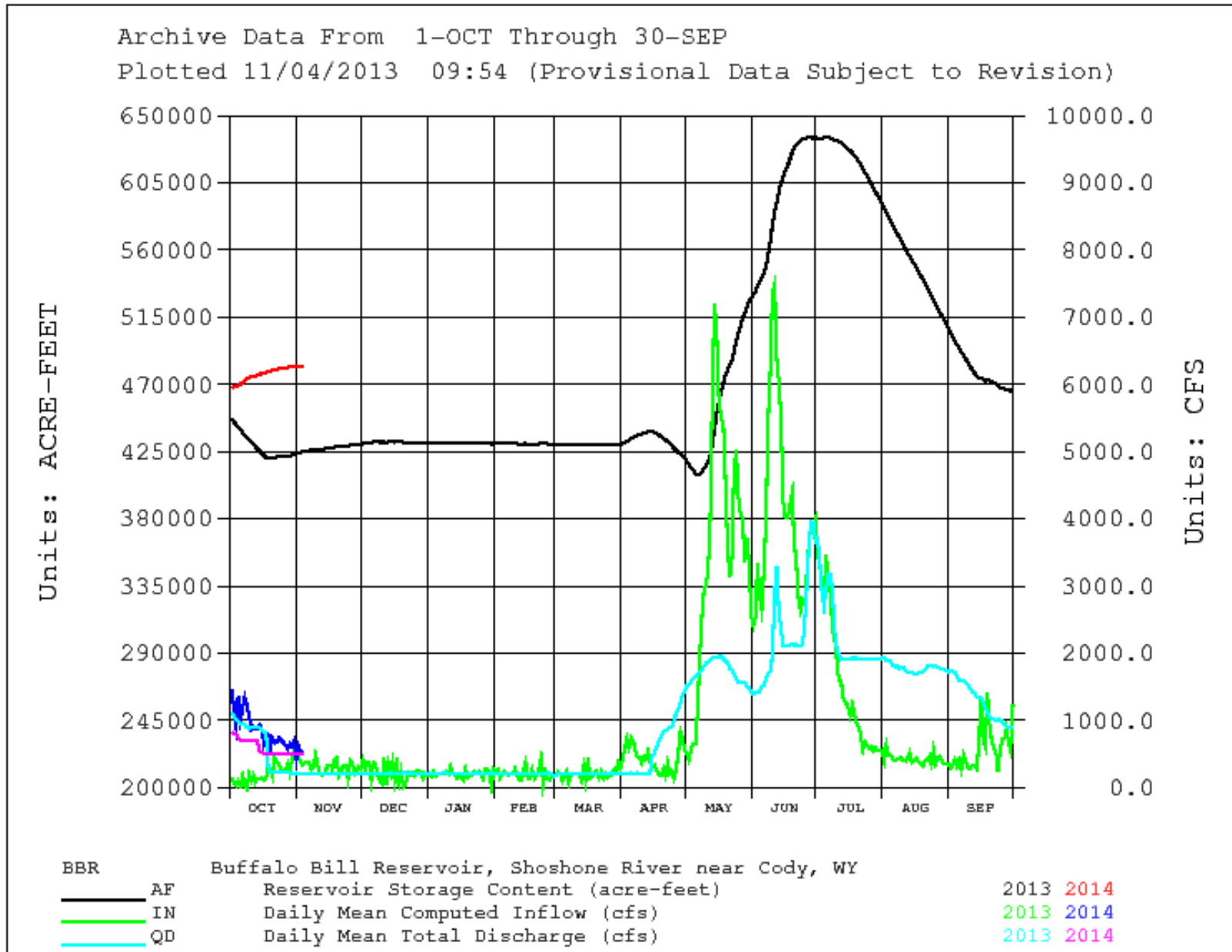
Water Year	April-July Inflow (acre-feet)
2011	1,230,400
2012	591,700
2013	576,400 (86% of avg)
2014	???
Average = 668,500	

2013 Buffalo Bill Reservoir Monthly Inflow (1000 AF)



RECLAMATION

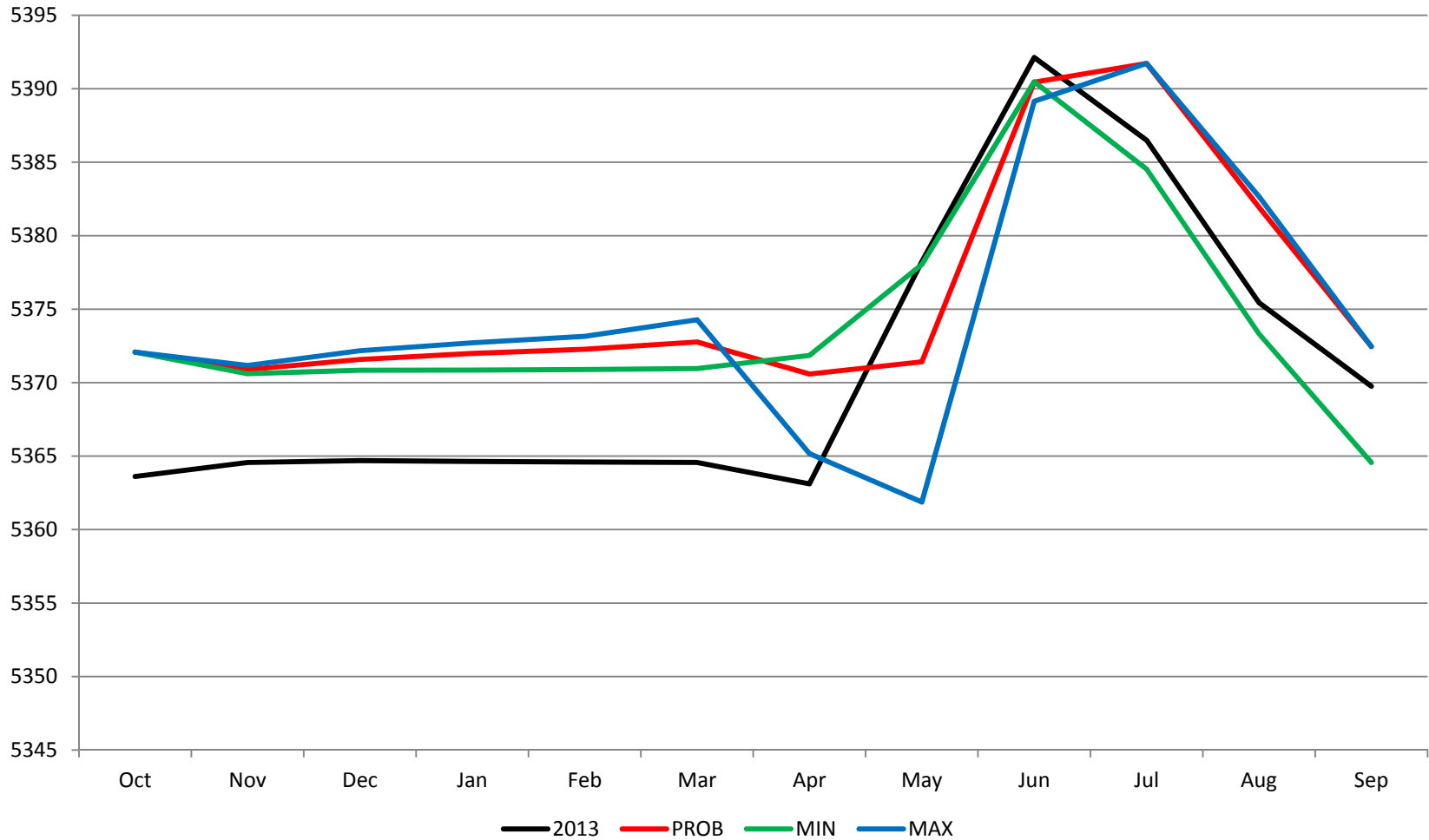
Buffalo Bill Reservoir 2013-2014 Operations



Buffalo Bill Reservoir

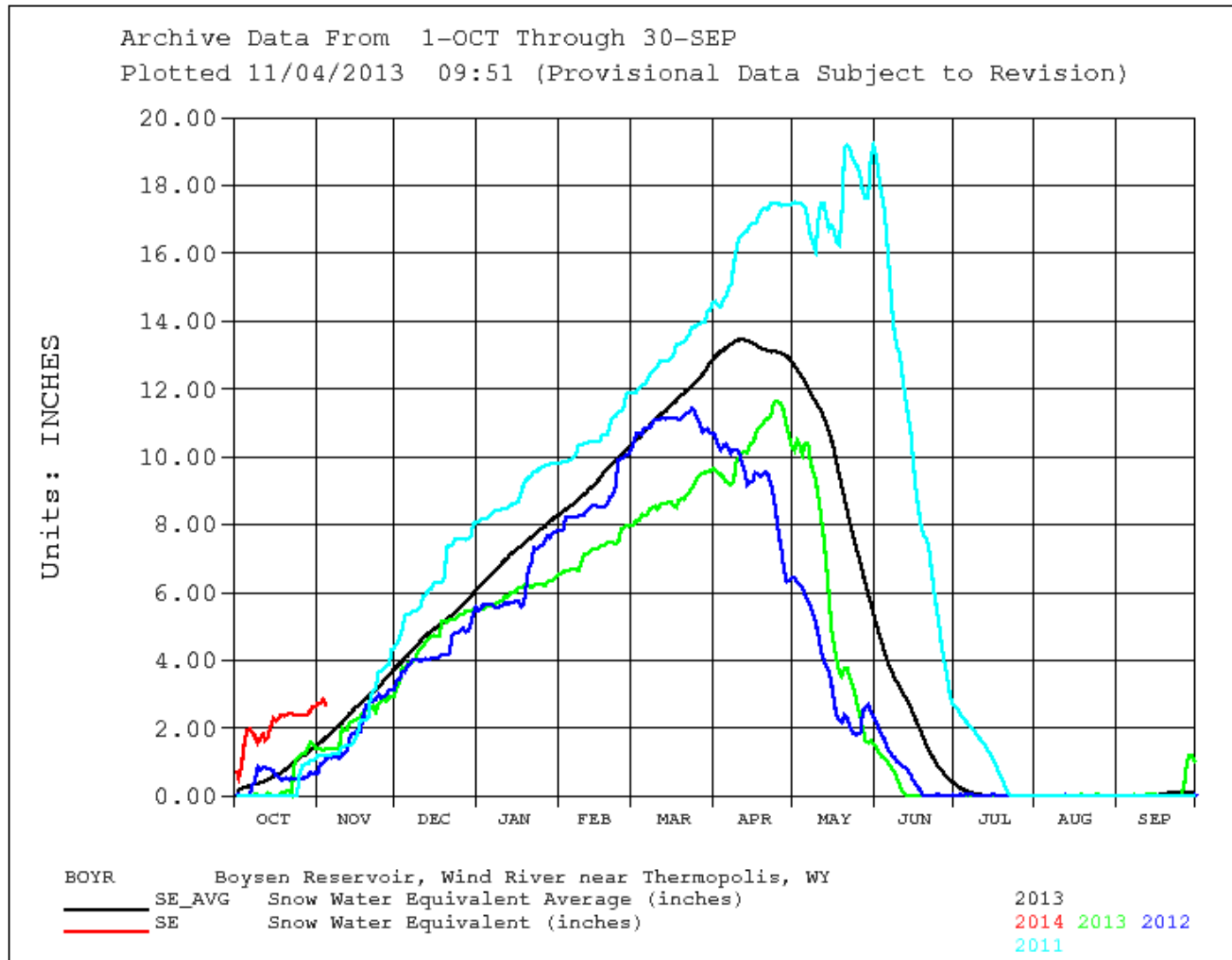
2013 Actual and 2014 Operations Scenarios

End of Month Elevation



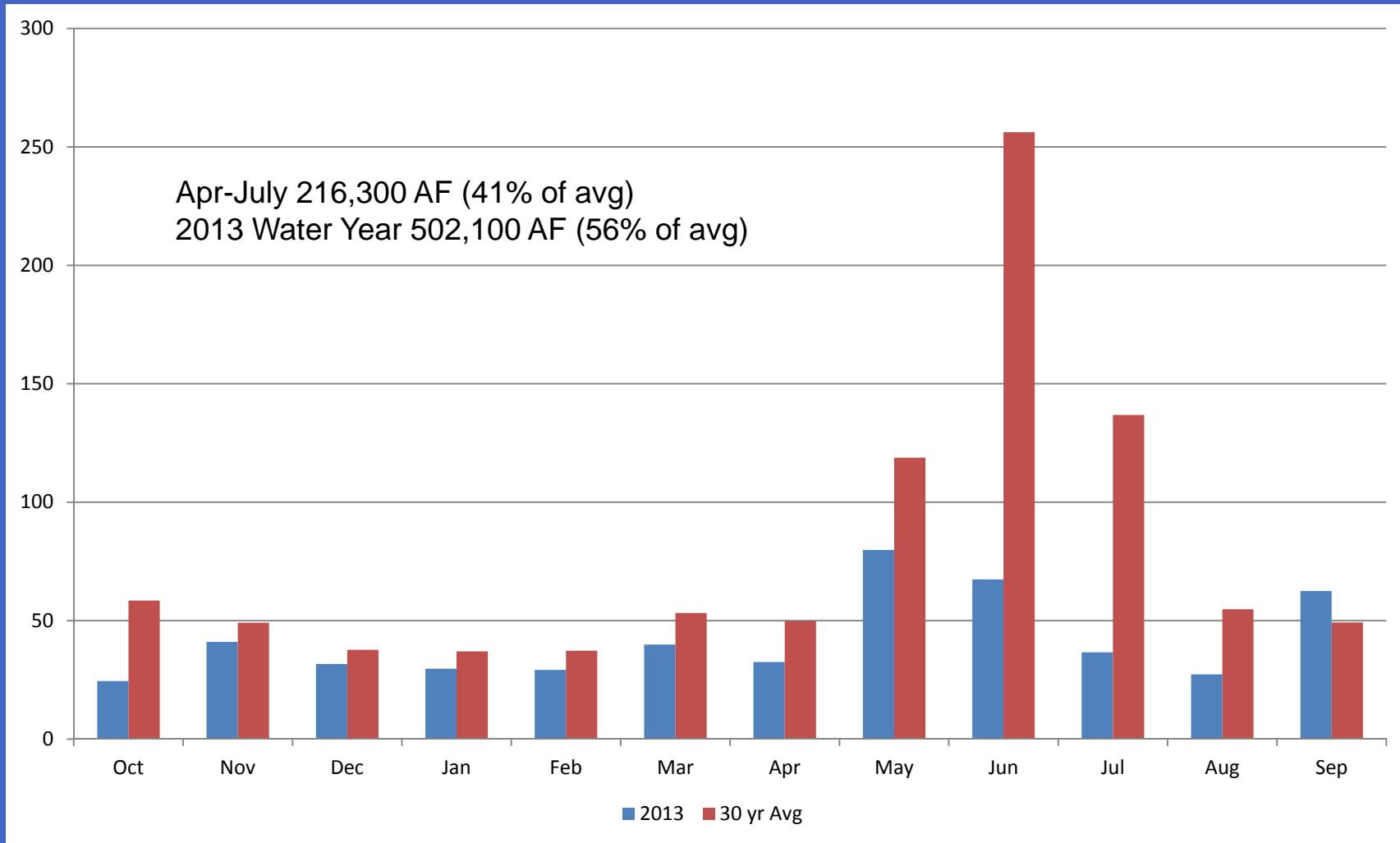
Basin above Boysen Reservoir

Snow Water Equivalent



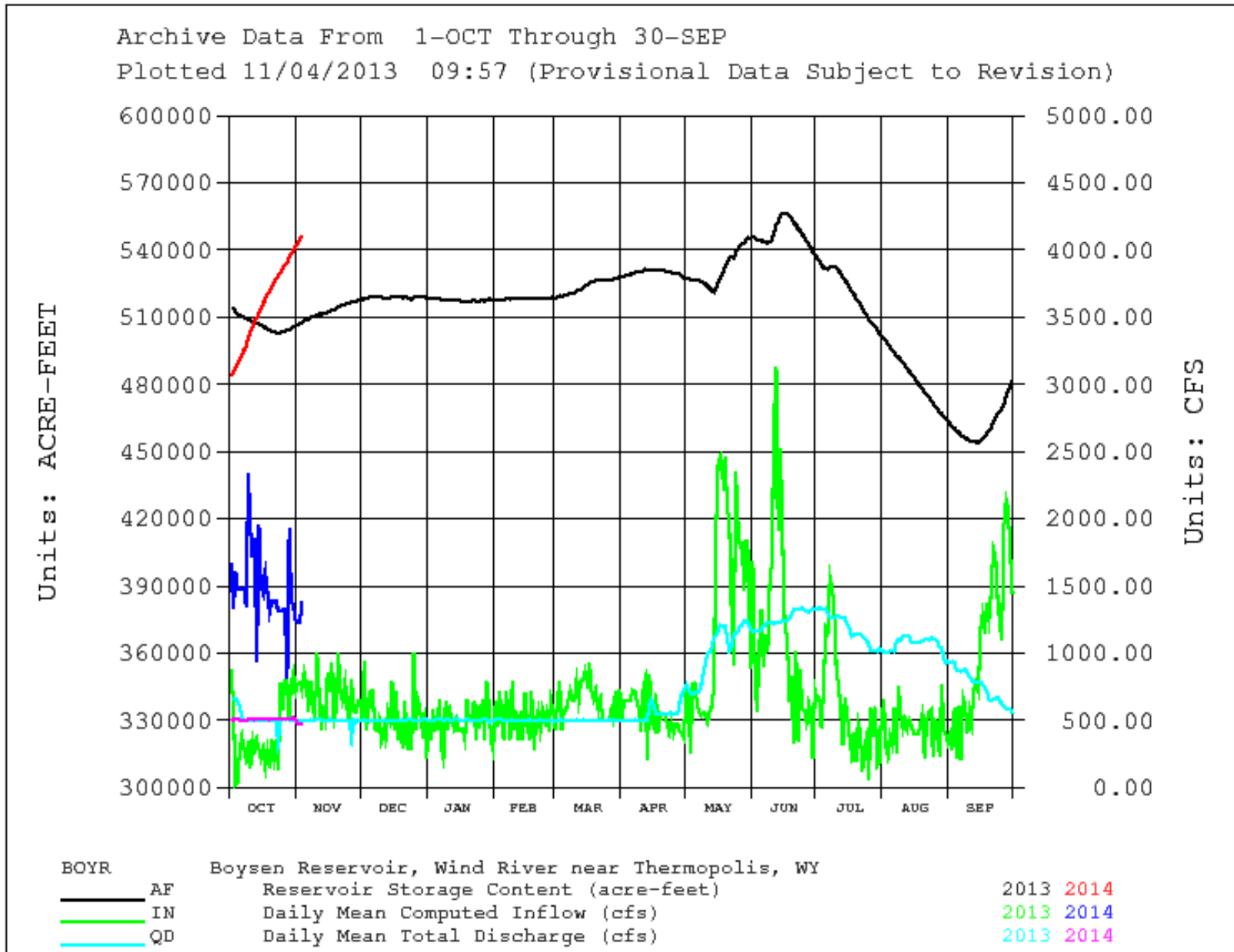
Water Year	April-July Inflow (acre-feet)
2011	994,700
2012	219,100
2013	216,200 (38% of avg)
2014	???
Average = 561,600	

2013 Boysen Reservoir Monthly Inflow (1000 AF)



RECLAMATION

Boysen Reservoir 2013-2014 Operations



Boysen Reservoir

2013 Actual and 2014 Operations Scenarios

End of Month Elevation

