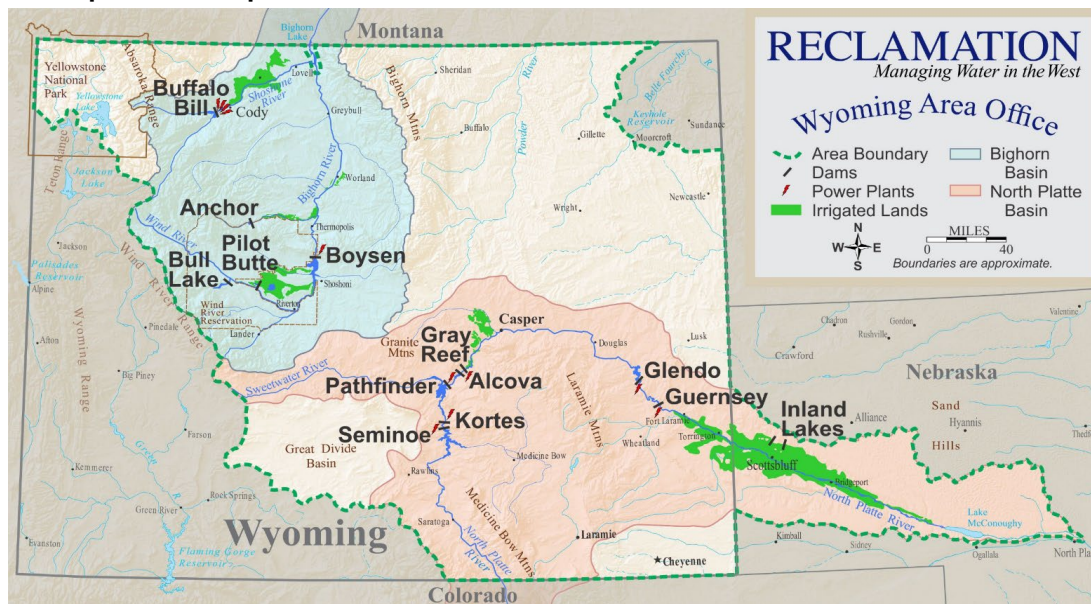




# BUREAU OF RECLAMATION

## North Platte River Basin Water Supply and Utilization Report Wyoming Area Office Report for September 2023



The Wyoming Area Office of the Bureau of Reclamation is responsible for the operation of Reclamation reservoirs in Wyoming east of the Continental Divide except for Keyhole Reservoir. Four off-stream reservoirs in Nebraska commonly referred to as the Inland Lakes also fall within the Wyoming Area. The North Platte River Basin Reservoirs have a combined storage capacity of 2,800,000 acre-feet. The major reservoirs in the Shoshone and Wind/Bighorn Basins have a combined storage capacity of 1,600,000 acre-feet.

**Report for September 2023**  
**WATER SUPPLY AND UTILIZATION REPORT**  
**NORTH PLATTE RIVER BASIN**  
**WYOMING AREA OFFICE**

**This report concerns the operation of Reclamation facilities in the North Platte River River Basins.**

**Reclamation defines a water year as the time period of October 1 through September 30. Water year is abbreviated in this report as W. Yr.**

**Other organizations furnished information for the Water Supply and Utilization Report. Their cooperation is greatly appreciated.**

**This report is available on the Internet and can be accessed by following these steps:**

- 1. Log on to the Missouri Basin and Arkansas Great Plains Home Page at <http://www.usbr.gov/gp>**
- 2. Select Water Operations.**
- 3. Select Water Management Information.**
- 4. Select Water Supply Report.**
- 5. Under North Platte River Basin, select the current report or reports from the previous 12 months.**

## NORTH PLATTE RIVER BASIN INFLOW

SEPTEMBER

Inflow and Historical Inflows, values in 1,000 acre-feet

| Reservoir                 | W. Yr. 2023 | 30 Yr. Avg.<br><sup>5</sup> | % of Avg.   | W. Yr. 2022 | W. Yr. 2021 | W. Yr. 2020 |
|---------------------------|-------------|-----------------------------|-------------|-------------|-------------|-------------|
| Seminole                  | 21.5        | 20.0                        | 108%        | 9.8         | 9.6         | 12.2        |
| <sup>1,2</sup> Pathfinder | 0.9         | 3.1                         | 29%         | 2.8         | -1.4        | 0.2         |
| <sup>3</sup> Glendo       | 8.1         | 6.4                         | 127%        | 4.7         | 5.5         | 7.9         |
| <sup>4</sup> Guernsey     | 14.1        | 3.7                         | 381%        | 2.2         | 3.5         | 6.9         |
| <b>System Total</b>       | <b>44.6</b> | <b>33.2</b>                 | <b>134%</b> | <b>19.5</b> | <b>17.2</b> | <b>27.2</b> |

<sup>1</sup> It is assumed that there is no gain between Seminole and Kortes Dams.

<sup>2</sup> River gain between Kortes and Pathfinder Dams.

<sup>3</sup> River gain between Pathfinder and Glendo Dams.

<sup>4</sup> River gain between Glendo and Guernsey Dams.

<sup>5</sup> 30 year average. (1993-2022)

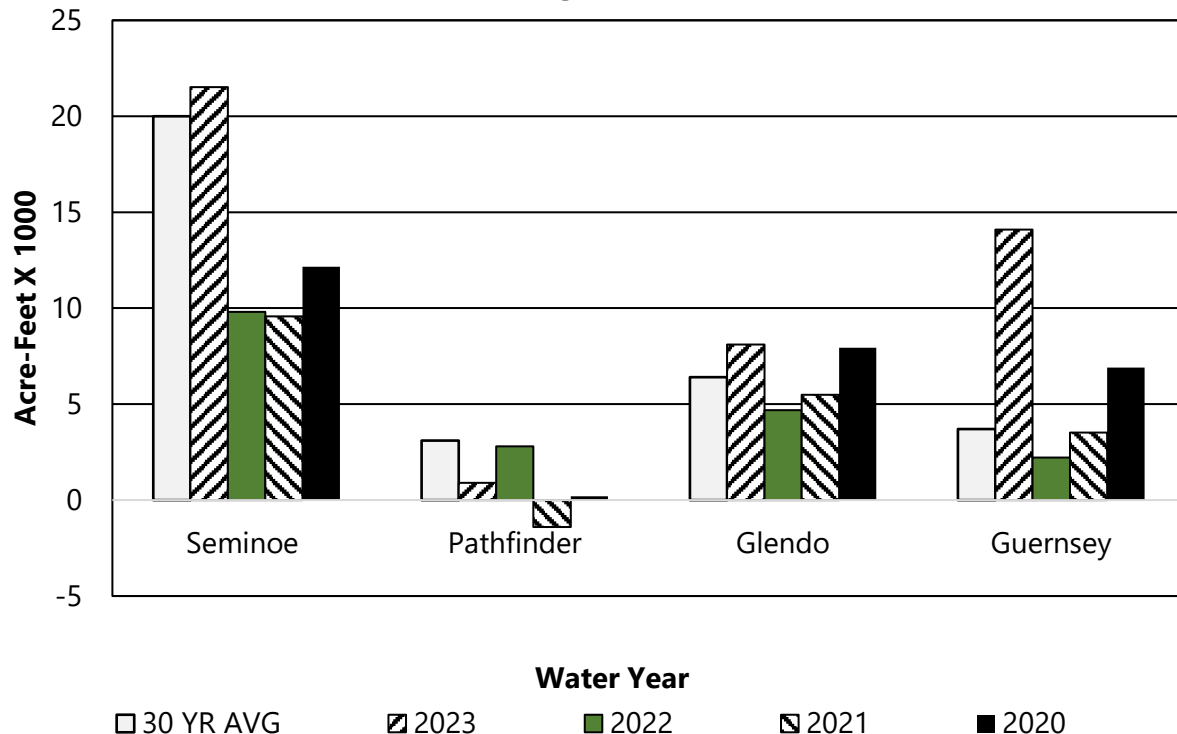
SEPTEMBER

Accumulated Water Year Inflows 1,000 acre-feet

| Reservoir           | W. Yr. 2023   | 30 Yr. Avg.   | % of Avg.   |
|---------------------|---------------|---------------|-------------|
| Seminole            | 1162.0        | 963.4         | 121%        |
| Pathfinder          | 142.8         | 103.3         | 138%        |
| Glendo              | 302.8         | 220.2         | 138%        |
| Guernsey            | 28.2          | 36.0          | 78%         |
| <b>System Total</b> | <b>1635.8</b> | <b>1322.9</b> | <b>124%</b> |

## NORTH PLATTE RIVER BASIN RESERVOIR INFLOW

SEPTEMBER



## NORTH PLATTE RIVER BASIN OUTFLOW

SEPTEMBER Outflow and Historical Outflows, values in 1,000 acre-feet

| Reservoir           | W. Yr. 2023 | 30 Yr. Avg.<br><sup>2</sup> | % of Avg. | W. Yr. 2022 | W. Yr. 2021 | W. Yr. 2020 |
|---------------------|-------------|-----------------------------|-----------|-------------|-------------|-------------|
| Seminole            | 68.3        | 48.6                        | 141%      | 32.9        | 32.3        | 37.1        |
| Kortes              | 68.3        | 48.5                        | 141%      | 32.9        | 32.3        | 37.1        |
| Pathfinder          | 63.7        | 67.3                        | 95%       | 78.5        | 48.9        | 49.3        |
| Alcova              | 49.0        | 57.1                        | 86%       | 65.5        | 33.8        | 40.1        |
| Gray Reef           | 48.9        | 57.1                        | 86%       | 65.8        | 33.7        | 40.0        |
| <sup>1</sup> Glendo | 105.7       | 95.8                        | 110%      | 81.9        | 27.5        | 83.0        |
| Guernsey            | 145.6       | 120.3                       | 121%      | 109.2       | 38.6        | 114.0       |

1. In 1993 an outlet was constructed at Glendo Dam which is used to provide a flow of approximately 25 cubic feet per second, 29 year average (1994-2022)

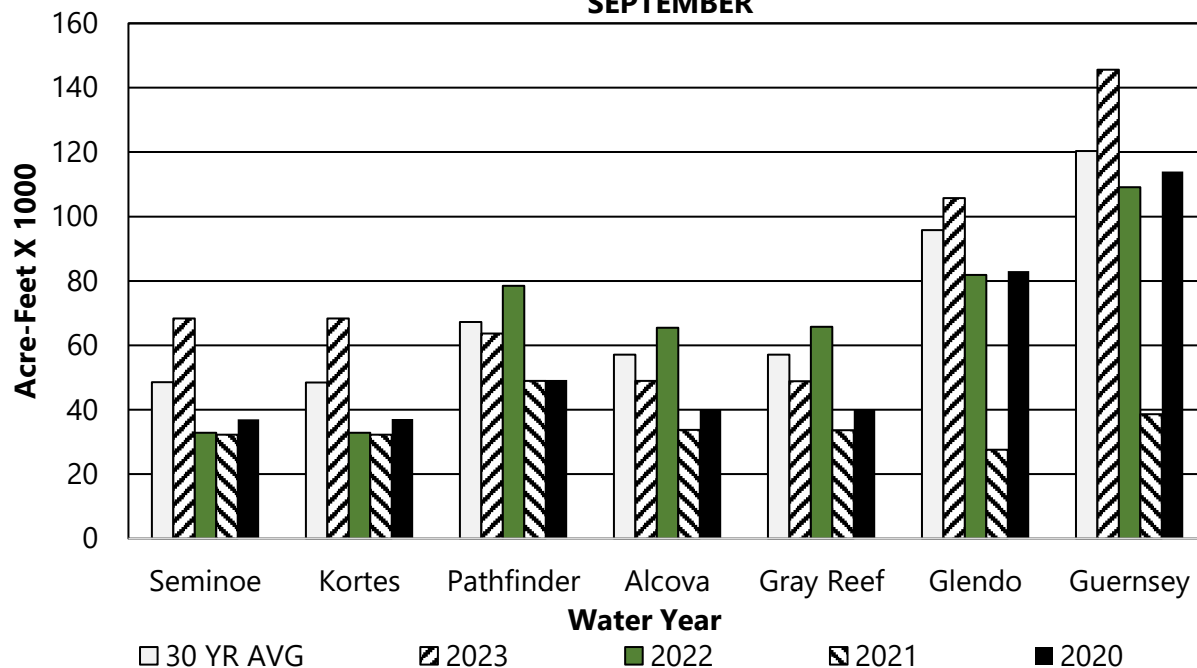
2. 30 year average is based on the 1993- 2022 period.

SEPTEMBER Accumulated Water Year Outflows in 1,000 acre-feet

| Reservoir           | W. Yr. 2023 | 30 Yr. Avg.<br><sup>2</sup> | % of Avg. |
|---------------------|-------------|-----------------------------|-----------|
| Seminole            | 937.7       | 913.7                       | 103%      |
| Kortes              | 937.5       | 913.5                       | 103%      |
| Pathfinder          | 670.2       | 964.1                       | 70%       |
| Alcova              | 606.5       | 890.8                       | 68%       |
| Gray Reef           | 605.8       | 890.3                       | 68%       |
| <sup>1</sup> Glendo | 864.6       | 1077.8                      | 80%       |
| Guernsey            | 890.1       | 1102.8                      | 81%       |

## NORTH PLATTE RIVER BASIN RESERVOIR OUTFLOW

SEPTEMBER



## NORTH PLATTE RIVER BASIN RESERVOIR STORAGE

SEPTEMBER

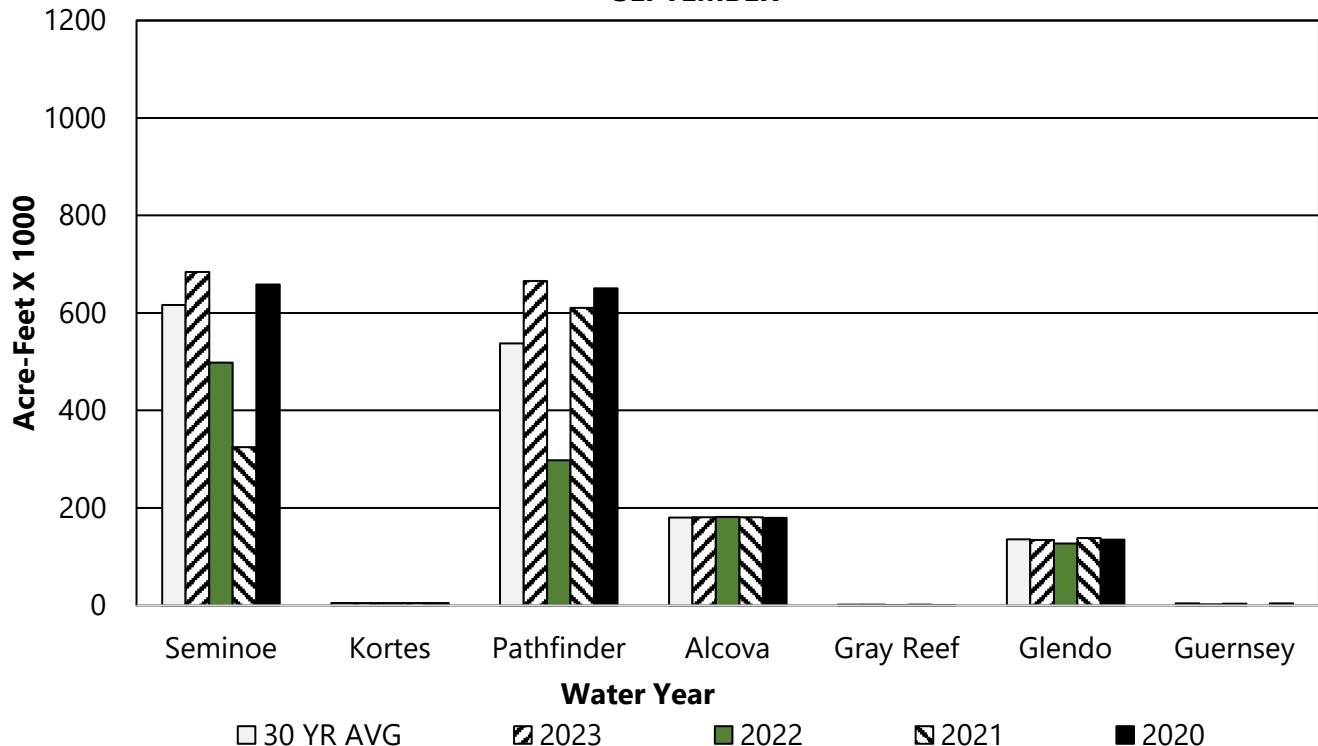
Storage, Historical Storage, and Storage Capacity. Values in 1,000 acre-feet

| Reservoir    | W. Yr.<br>2023 | 30 Yr.<br>Avg. | % of<br>Avg. | W. Yr.<br>2022 | W. Yr.<br>2021 | W. Yr.<br>2020 | Total<br>Conservation<br>Storage<br>Capacity | Percent of<br>Capacity |
|--------------|----------------|----------------|--------------|----------------|----------------|----------------|--|------------------------|
| Seminole     | 684.1          | 616.2          | 111%         | 498.3          | 325.0          | 658.6          | 1017.3                                       | 67%                    |
| Kortes       | 4.7            | 4.7            | 101%         | 4.7            | 4.7            | 4.7            | 4.7  | 101%                   |
| Pathfinder   | 665.6          | 537.5          | 124%         | 297.8          | 610.1          | 650.5          | 1070.0                                       | 62%                    |
| Alcova       | 180.8          | 180.0          | 100%         | 181.5          | 180.6          | 179.8          | 184.4  | 98%                    |
| Gray Reef    | 1.4            | 1.4            | 101%         | 1.2            | 1.6            | 1.2            | 1.8  | 78%                    |
| Glendo       | 134.5          | 135.7          | 99%          | 127.2          | 138.4          | 135.0          | 492.0  | 27%                    |
| Guernsey     | 2.5            | 4.5            | 55%          | 3.7            | 0.0            | 4.5            | 45.6   | 5%                     |
| <b>Total</b> | <b>1673.7</b>  | <b>1480.0</b>  | <b>113%</b>  | <b>1114.3</b>  | <b>1260.4</b>  | <b>1634.3</b>  | <b>2815.8</b>                                | <b>59%</b>             |

1 Average is based on the 1993-2022 period.

## NORTH PLATTE RIVER BASIN RESERVOIR STORAGE

SEPTEMBER



## NORTH PLATTE RIVER BASIN RESERVOIR STORAGE OWNERSHIP

SEPTEMBER Storage, Historical Storage, and Storage Capacity. Values in 1,000 acre-feet

| Reservoir                        | W. Yr.<br>2023 | 30 Yr.<br>Avg. | % of<br>Avg. | W. Yr.<br>2022 | W. Yr.<br>2021 | W. Yr.<br>2020 | Total<br>Conservation<br>Storage<br>Capacity | Percent of<br>Capacity |
|----------------------------------|----------------|----------------|--------------|----------------|----------------|----------------|--|------------------------|
| <b>Kendrick</b>                  | 917.6          | 891.2          | 103%         | 832.0          | 953.5          | 1073.8         | 1201.7                                       | 76%                    |
| <sup>1</sup> <b>North Platte</b> | 591.3          | 441.0          | 134%         | 154.8          | 152.2          | 411.1          | 1115.6                                       | 53%                    |
| <b>Glendo</b>                    | 145.3          | 131.1          | 111%         | 118.2          | 134.2          | 131.2          | 171.7  | 85%                    |
| <sup>2</sup> <b>Inland Lakes</b> | 0.0            | 0.0            | N/A          | 0.0            | 0.0            | 0.0            | 46.0   | 0%                     |
| <sup>3,7</sup> <b>Cheyenne</b>   | 7.2            | 4.4            | 164%         | 7.3            | 7.3            | 8.3            | 15.7   | 46%                    |
| <sup>4</sup> <b>PacifiCorp</b>   | 2.0            | 2.0            | 100%         | 2.0            | 2.0            | 2.0            | 2.0  | 100%                   |
| <sup>6</sup> <b>Other</b>        | 10.4           | 9.5            | 109%         | 0.1            | 11.3           | 7.9            | N/A  | N/A                    |

<sup>1</sup> This includes North Platte Guernsey and North Platte Pathfinder.

<sup>2</sup> Water stored temporarily in mainstem facilities for later transfer to the Inland Lakes. This table does not reflect water currently stored in the Inland Lakes.

<sup>3</sup> The City of Cheyenne has a storage contract to store water in Seminoe Reservoir by exchange of Upper North Platte Basin water through a system of trans-basin diversions.

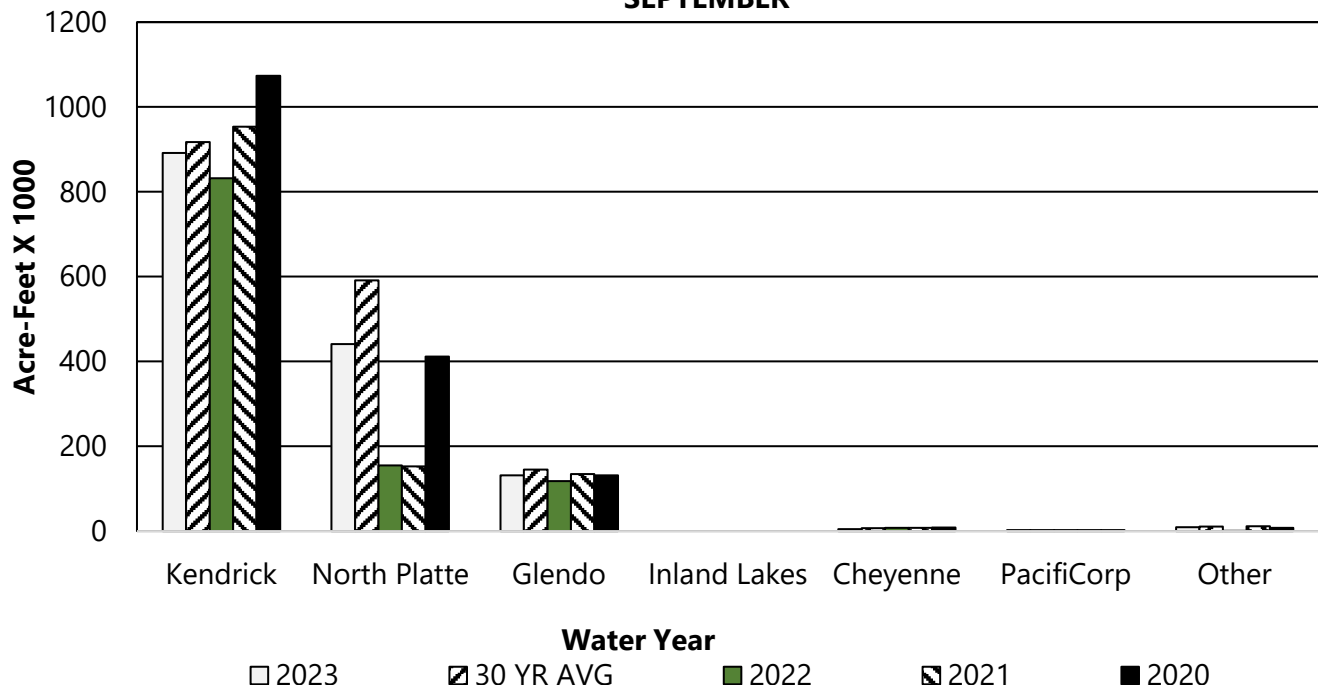
<sup>4</sup> PacifiCorp has a storage contract to store water in Glendo Reservoir for Dave Johnston Powerplant.

<sup>5</sup> Average is based on the 1993-2022 period.

<sup>6</sup> Water which is captured in the re-regulation space of Glendo in addition to storage rights, operational water account, and replacement of evaporation losses is labeled as "Re-regulation of Natural Flow" per Wyoming Board of Control Order Docket Number I-2000-3-8 in water Division Number One. In accordance with 2022 Natural Flow and Ownership Procedures, the operational account can contain up to 15,000 acre-feet. On September 30, 2023, the Operational account contained 10,371 Acre-feet, the Re-Regulation space contained 0 Acre-feet.

<sup>7</sup> Cheyenne ownership was increased to 15,700 AF on March 13, 2009 as a result of Amendment No. 1 to Contract No. 06XX6A0062.

## OWNERSHIP OF WATER SEPTEMBER



## INLAND LAKES RESERVOIR STORAGE

SEPTEMBER

Storage, and Storage Capacity. Values in acre-feet

| Reservoir          | W. Yr. 2023 | 30 Yr. Avg. | % of Avg. | Total Storage Capacity |
|--------------------|-------------|-------------|-----------|------------------------|
| Lake Alice         | 1,564       | 1,750       | 89%       | 11,034 <sup>1</sup>    |
| Little Lake Alice  | 123         | 220         | 56%       | 1,166 <sup>2</sup>     |
| Lake Winters Creek | 1,268       | 890         | 142%      | 1,746 <sup>3</sup>     |
| Lake Minatare      | 33,248      | 24,350      | 137%      | 58,795 <sup>4</sup>    |

<sup>1</sup> At Elevation 4182.0

<sup>2</sup> At Elevation 4139.0

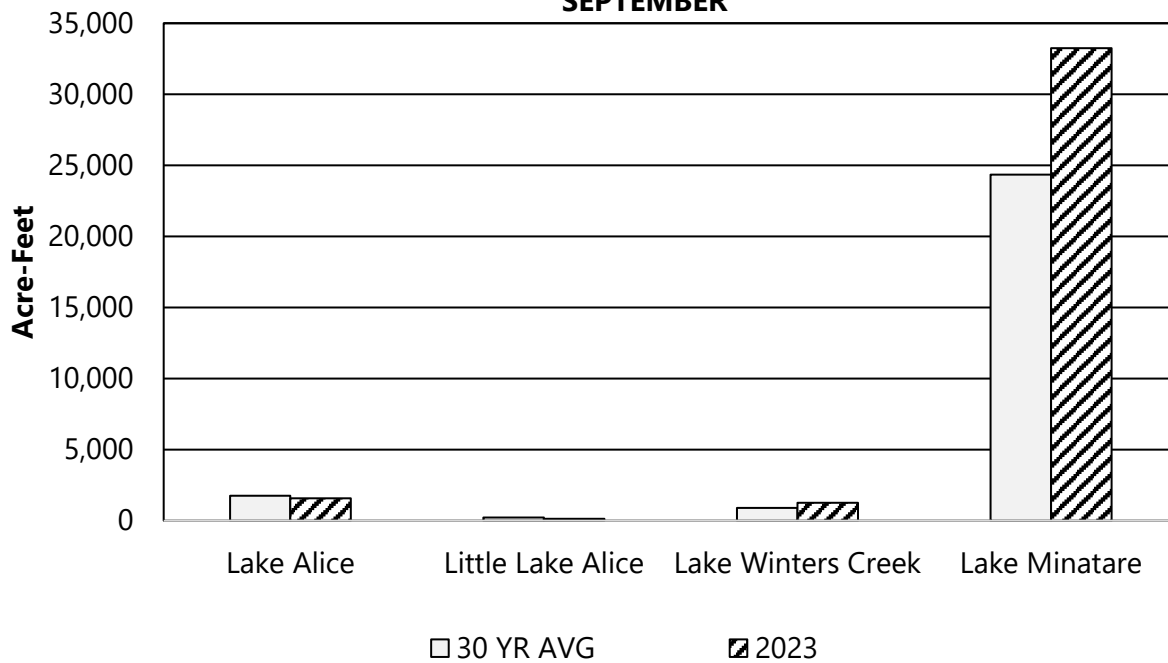
<sup>3</sup> At Elevation 4125.0

<sup>4</sup> At Elevation 4125.0

<sup>5</sup> 30 year average. (1993-2022)

## INLAND LAKES RESERVOIR STORAGE

SEPTEMBER



## NORTH PLATTE RIVER BASIN GROSS GENERATION

SEPTEMBER

Gross Generation and Historical Generation. Values in GWH

| Powerplant     | W. Yr. 2023 | 30 Yr. Avg.<br><sup>2</sup> | % of Avg. | W. Yr. 2022 | W. Yr. 2021 | W. Yr. 2020 |
|----------------|-------------|-----------------------------|-----------|-------------|-------------|-------------|
| Seminole       | 9.5         | 6.8                         | 140%      | 0.0         | 0.1         | 4.3         |
| Kortes         | 11.1        | 8.0                         | 138%      | 4.7         | 5.0         | 5.5         |
| Fremont Canyon | 17.2        | 16.8                        | 103%      | 18.9        | 13.4        | 12.5        |
| Alcova         | 5.4         | 7.1                         | 77%       | 8.4         | 3.4         | 4.6         |
| Glendo         | 7.7         | 6.1                         | 126%      | 4.2         | 1.7         | 4.9         |
| Guernsey       | 2.6         | 2.4                         | 110%      | 2.8         | 0.1         | 3.1         |

1 The powerplant for Pathfinder Dam is Fremont Canyon.

2 Average is based on the 1993-2022 period.

SEPTEMBER

Accumulated Gross Generation Water Year. Values in GWH

| Powerplant     | W. Yr. 2023 | 30 Yr. Avg.<br><sup>2</sup> | % of Avg. |
|----------------|-------------|-----------------------------|-----------|
| Seminole       | 136.2       | 125.6                       | 108%      |
| Kortes         | 146.9       | 132.6                       | 111%      |
| Fremont Canyon | 174.3       | 215.7                       | 81%       |
| Alcova         | 67.9        | 107.1                       | 63%       |
| Glendo         | 69.1        | 83.1                        | 83%       |
| Guernsey       | 18.6        | 17.2                        | 108%      |

## NORTH PLATTE RIVER BASIN GROSS GENERATION

SEPTEMBER

