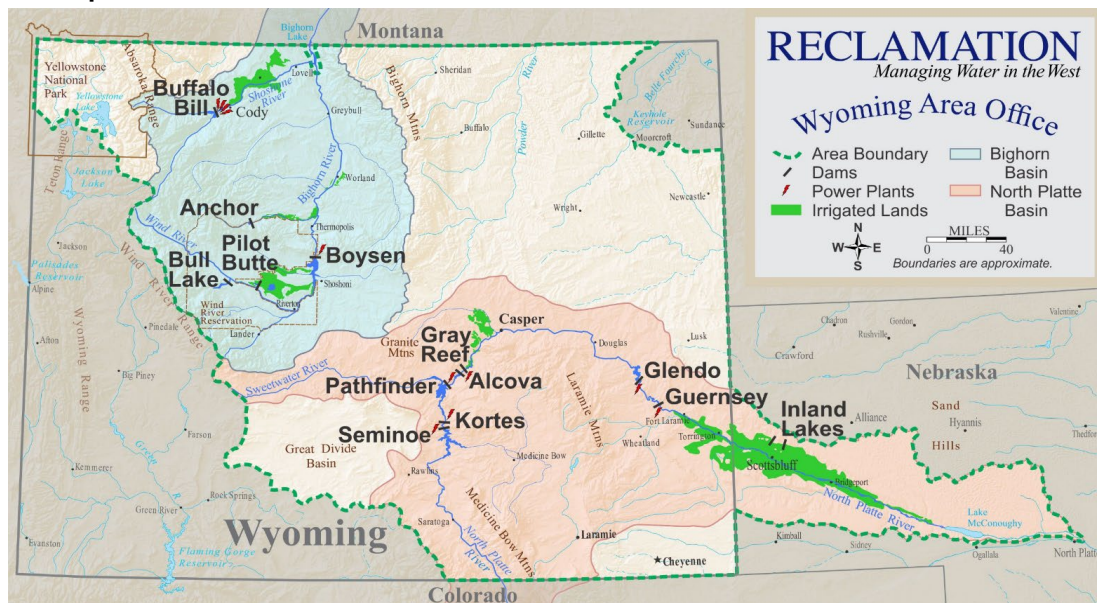




North Platte River Basin Water Supply and Utilization Report

Wyoming Area Office

Report for October 2025



The Wyoming Area Office of the Bureau of Reclamation is responsible for the operation of Reclamation reservoirs in Wyoming east of the Continental Divide except for Keyhole Reservoir. Four off-stream reservoirs in Nebraska commonly referred to as the Inland Lakes also fall within the Wyoming Area. The North Platte River Basin Reservoirs have a combined storage capacity of 2,800,000 acre-feet. The major reservoirs in the Shoshone and Wind/Bighorn Basins have a combined storage capacity of 1,600,000 acre-feet.

Report for October 2025
WATER SUPPLY AND UTILIZATION REPORT
NORTH PLATTE RIVER BASIN
WYOMING AREA OFFICE

This report concerns the operation of Reclamation facilities in the North Platte River River Basins.

Reclamation defines a water year as the time period of October 1 through September 30. Water year is abbreviated in this report as W. Yr.

Other organizations furnished information for the Water Supply and Utilization Report. Their cooperation is greatly appreciated.

This report is available on the Internet and can be accessed by following these steps:

- 1. Log on to the Missouri Basin and Arkansas-Rio Grande-Texas Gulf Regions Home Page at <http://www.usbr.gov/gp>**
- 2. Select Water Operations.**
- 3. Select Water Management Information.**
- 4. Select Water Supply Report.**
- 5. Under North Platte River Basin, select the current report or reports from the previous 12 months.**

NORTH PLATTE RIVER BASIN INFLOW

October Inflow and Historical Inflows, values in 1,000 acre-feet

Reservoir	W. Yr. 2026 ⁶	30 Yr. Avg. ⁵	% of Avg.	W. Yr. 2025	W. Yr. 2024	W. Yr. 2023
Seminoe	22.1	27.0	82%	13.8	22.7	18.0
Pathfinder ^{1,2}	0.9	4.1	22%	3.3	3.9	2.2
Glendo ³	3.3	9.9	33%	8.9	13.4	8.3
Guernsey ⁴	1.2	2.3	51%	2.7	2.7	1.6
System Total	27.4	43.2	63%	28.7	42.7	30.0

1 It is assumed that there is no gain between Seminoe and Kortes Dams.

2 River gain between Kortes and Pathfinder Dams.

3 River gain between Pathfinder and Glendo Dams.

4 River gain between Glendo and Guernsey Dams.

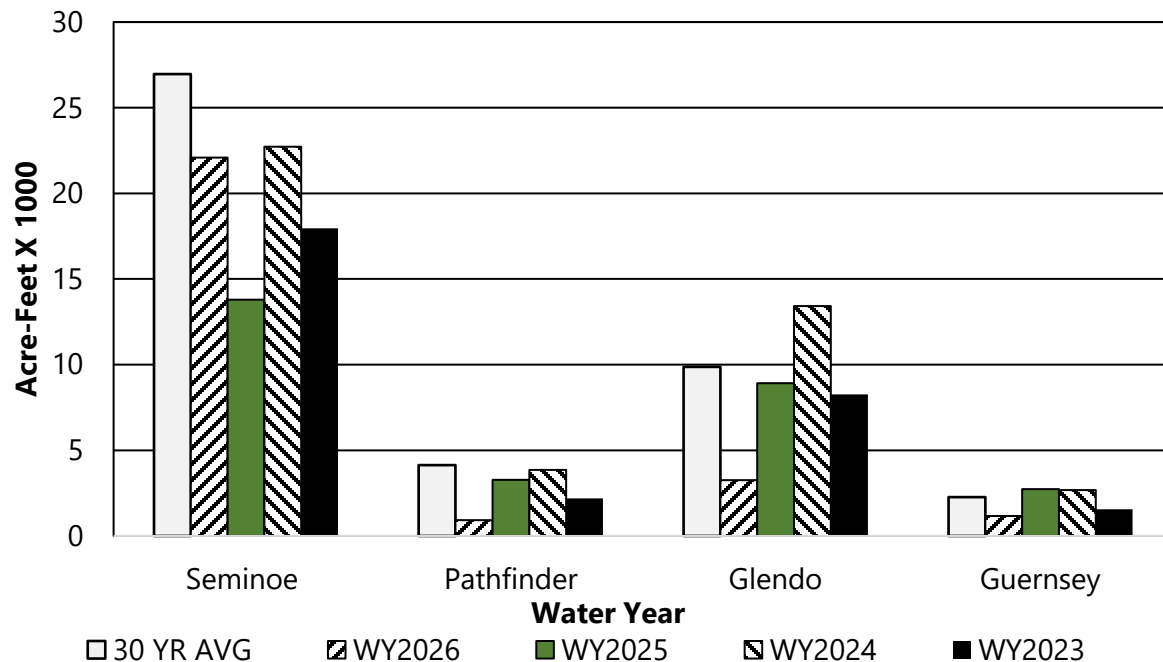
5 30 year average. (1996-2025)

6 W. Yr. 2026 covers the period October 1, 2025 to September 30, 2026.

October Accumulated Water Year Inflows, values in 1,000 acre-feet

Reservoir	W. Yr. 2026 ⁶	30 Yr. Avg. ⁵	% of Avg.
Seminoe	22.1	27.0	82%
Pathfinder ^{1,2}	0.9	4.1	22%
Glendo ³	3.3	9.9	33%
Guernsey ⁴	1.2	2.3	51%
System Total	27.4	43.2	63%

OCTOBER NORTH PLATTE RIVER BASIN RESERVOIR INFLOW



NORTH PLATTE RIVER BASIN OUTFLOW

October Outflow and Historical Outflows, values in 1,000 acre-feet

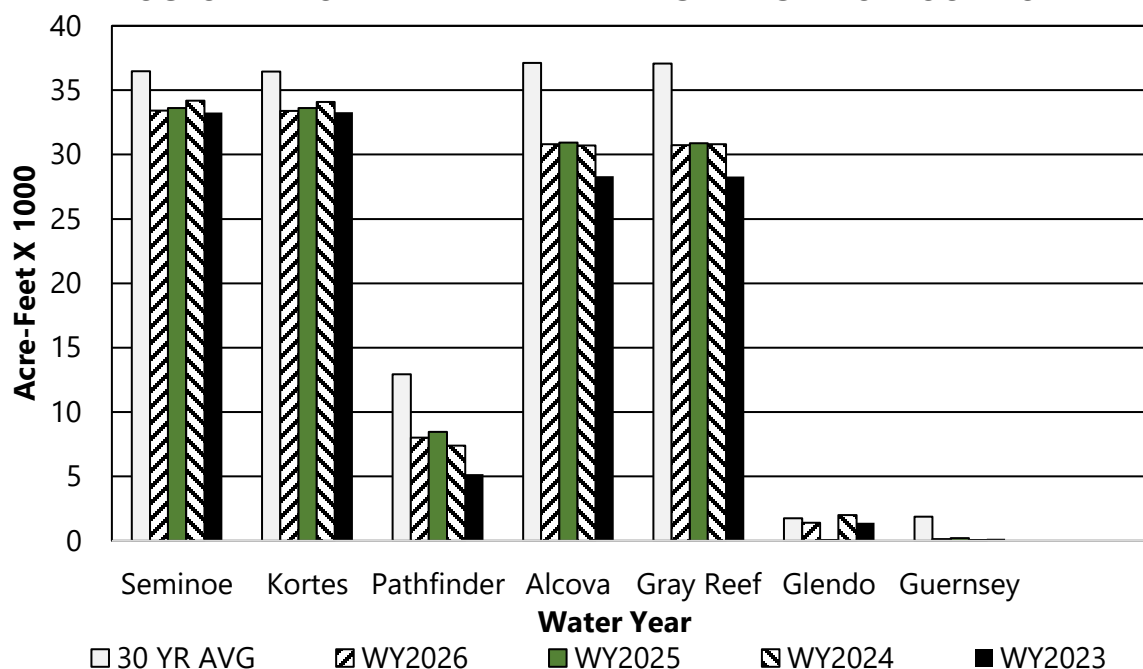
Reservoir	W. Yr. 2026	30 Yr. Avg. ¹	% of Avg.	W. Yr. 2025	W. Yr. 2024	W. Yr. 2023
Seminole	33.4	36.5	92%	33.6	34.2	33.3
Kortes	33.4	36.5	92%	33.6	34.1	33.3
Pathfinder	8.0	12.9	62%	8.5	7.4	5.2
Alcova	30.8	37.1	83%	30.9	30.7	28.3
Gray Reef	30.7	37.1	83%	30.9	30.8	28.3
Glendo	1.4	1.8	80%	0.1	2.0	1.4
Guernsey	0.1	1.9	7%	0.2	0.1	0.2

1 Average is based on the 1996-2025 period.

October Accumulated Water Year Outflows, values in 1,000 acre-feet

Reservoir	W. Yr. 2026	30 Yr. Avg. ¹	% of Avg.
Seminole	33.4	36.5	92%
Kortes	33.4	36.5	92%
Pathfinder	8.0	12.9	62%
Alcova	30.8	37.1	83%
Gray Reef	30.7	37.1	83%
Glendo	1.4	1.8	80%
Guernsey	0.1	1.9	7%

OCTOBER NORTH PLATTE RIVER BASIN RESERVOIR OUTFLOW



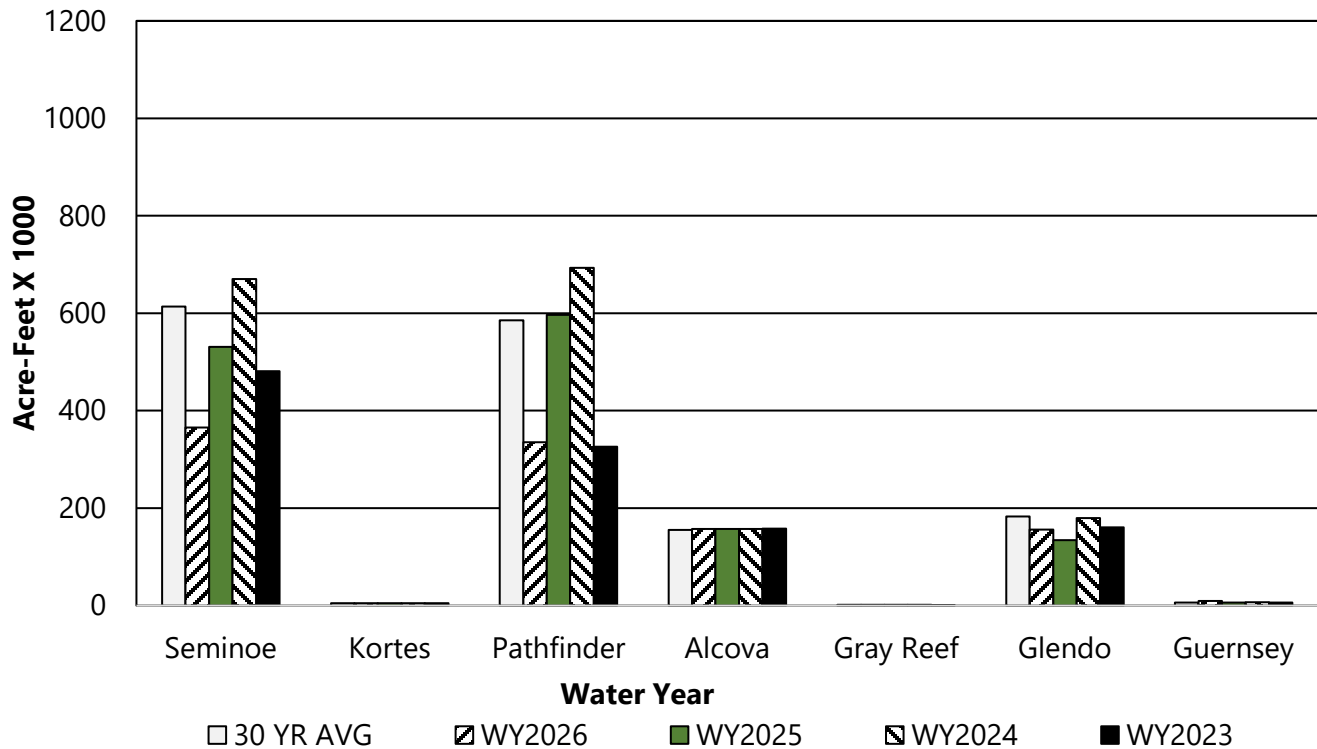
NORTH PLATTE RIVER BASIN RESERVOIR STORAGE

October Storage, Historical Storage, and Storage Capacity in 1,000 acre-feet

Reservoir	W. Yr. 2026	30 Yr. Avg. ¹	% of Avg.	W. Yr. 2025	W. Yr. 2024	W. Yr. 2023	Total Conservation Storage Capacity	Percent of Capacity
Seminole	365.6	613.4	60%	531.1	670.2	480.8	1017.3	36%
Kortes	4.7	4.7	101%	4.7	4.7	4.7	4.7	101%
Pathfinder	335.2	585.8	57%	596.4	693.0	326.2	1070.0	31%
Alcova	157.5	155.4	101%	157.4	157.6	157.8	184.4	85%
Gray Reef	1.6	1.4	107%	1.5	1.3	1.3	1.8	86%
Glendo	156.1	182.9	85%	134.3	179.8	160.8	492.0	32%
Guernsey	9.3	6.5	144%	6.0	6.9	6.3	45.6	20%
Total	1029.9	1550.1	66%	1431.5	1713.5	1137.9	2815.8	37%

¹ Average is based on the 1996-2025 period.

OCTOBER NORTH PLATTE RIVER BASIN RESERVOIR STORAGE



INLAND LAKES RESERVOIR STORAGE

October Storage, Historical Storage, and Storage Capacity in 1,000 acre-feet

Reservoir	W. Yr. 2026	30 Yr. Avg. ⁵	% of Avg.	Total Storage Capacity
Lake Alice	284	776	37%	11,034 ¹
Little Lake Alice	124	149	83%	1,166 ²
Lake Winters Creek	1,164	894	130%	1,746 ³
Lake Minatare	20,080	25,625	78%	58,795 ⁴

1 At Elevation 4182.0

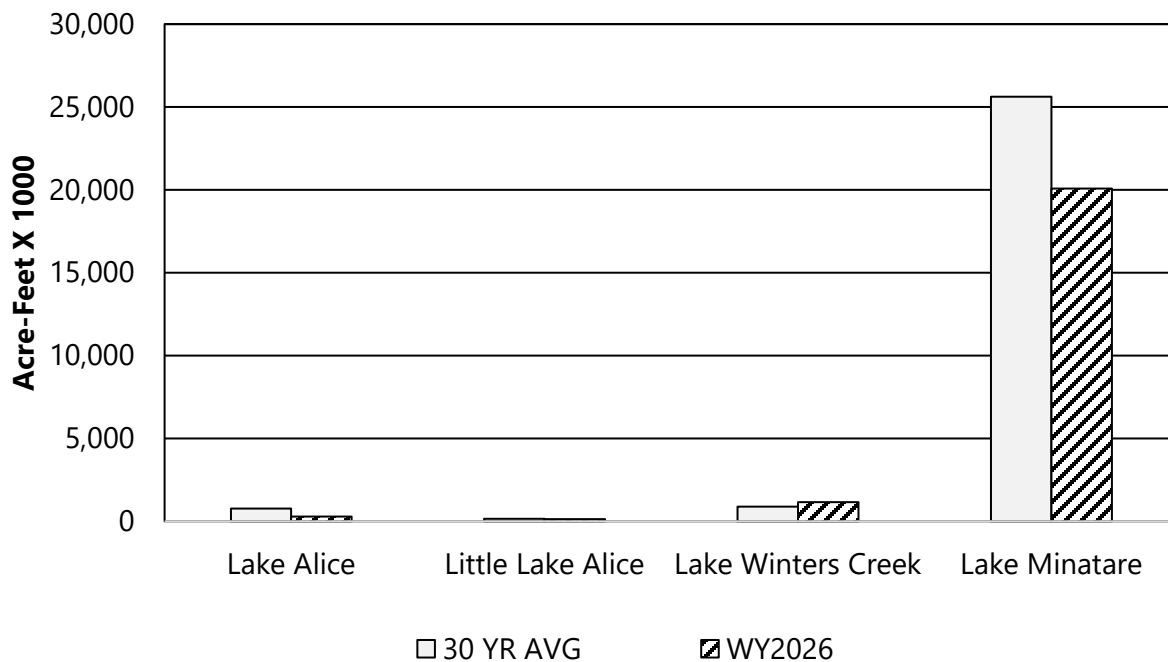
2 At Elevation 4139.0

3 At Elevation 4129.0

4 At Elevation 4125.0

5 30 year average. (1996-2025)

OCTOBER INLAND LAKES RESERVOIR STORAGE



NORTH PLATTE RIVER BASIN RESERVOIR STORAGE OWNERSHIP

October Ownership Storage, Historical Storage, and Storage Capacity in 1,000 acre-feet

Reservoir	W. Yr. 2026	30 Yr. Avg. ⁷	% of Avg.	W. Yr. 2025	W. Yr. 2024	W. Yr. 2023	Total Conservation Storage Capacity	Percent of Capacity
Kendrick	710.3	916.0	78%	827.0	914.2	828.8	1201.7	59%
North Platte ¹	201.0	476.9	42%	450.6	618.6	172.5	1115.6	18%
Glendo	105.7	128.4	82%	128.4	144.3	116.9	171.7	62%
Inland Lakes ²	4.3	11.3	38%	11.4	15.9	9.6	46.0	9%
Cheyenne ^{3,4}	4.7	5.3	90%	4.8	8.1	8.1	15.7	30%
PacifiCorp ⁵	2.0	2.0	100%	2.0	2.0	2.0	2.0	100%
Other ⁶	2.0	10.2	19%	7.3	10.3	0.1	N/A	N/A

1 This includes North Platte Guernsey and North Platte Pathfinder.

2 Water stored temporarily in mainstem facilities for later transfer to the Inland Lakes. This table does not reflect water currently stored in the Inland Lakes.

3 The City of Cheyenne has a storage contract to store water in Seminoe Reservoir by exchange of Upper North Platte Basin water through a system of trans-basin diversions.

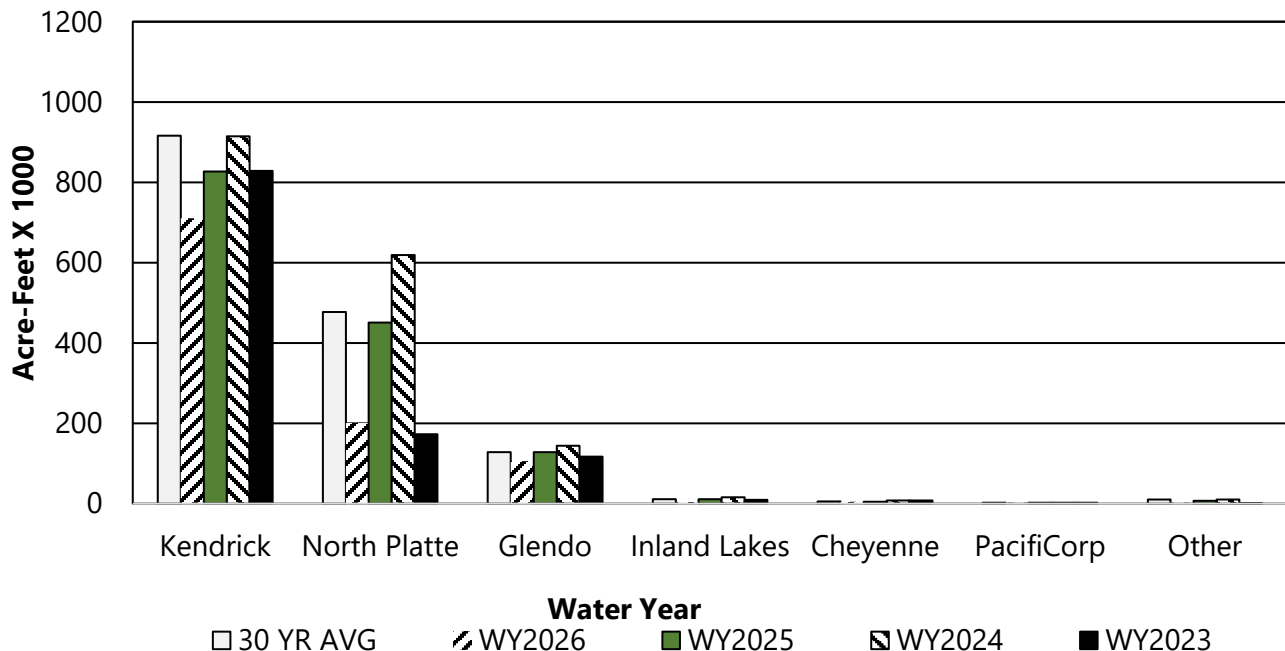
4 Cheyenne ownership was increased to 15,700 AF on March 13, 2009 as a result of Amendment No. 1 to Contract No. 06XX6A0062.

5 PacifiCorp has a storage contract to store water in Glendo Reservoir for Dave Johnston Powerplant.

6 Water which is captured in the re-regulation space of Glendo in addition to storage rights, Operational water account, and replacement of evaporation losses is labeled as 'Re-regulation of Natural Flow' per Wyoming Board of Control Order Docket Number I-2000-3-8 in water Division Number One. In accordance with 2022 Natural Flow and Ownership Procedures, the Operational account can contain up to 15,000 acre-feet. On October 31, 2025, the Operational account contained 1,953 Acre-feet, the Re-Regulation space contained 0 Acre-feet.

7 Average is based on the 1996-2025 period.

OCTOBER OWNERSHIP OF WATER



NORTH PLATTE RIVER BASIN GROSS GENERATION

October Gross Generation and Historical Generation in Giga Watt Hours

Powerplant	W. Yr. 2026	30 Yr. Avg. ²	% of Avg.	W. Yr. 2025	W. Yr. 2024	W. Yr. 2023
Seminole	3.6	4.9	74%	4.2	4.6	0.9
Kortes	5.3	5.8	90%	5.6	5.7	5.5
Fremont Canyon ¹	0.3	1.9	16%	0.6	0.3	0.2
Alcova	3.1	4.0	78%	3.2	3.1	2.7
Glendo	0.0	0.0	N/A	0.0	0.0	0.0
Guernsey	0.0	0.0	N/A	0.0	0.0	0.0

1 The powerplant for Pathfinder Dam is Fremont Canyon.

2 Average is based on the 1996-2025 period.

October Accumulated Gross Generation Water Year in Giga Watt Hours

Powerplant	W. Yr. 2026	30 Yr. Avg. ²	% of Avg.
Seminole	3.6	4.9	74%
Kortes	5.3	5.8	90%
Fremont Canyon ¹	0.3	1.9	16%
Alcova	3.1	4.0	78%
Glendo	0.0	0.0	N/A
Guernsey	0.0	0.0	N/A

OCTOBER NORTH PLATTE RIVER GROSS GENERATION

