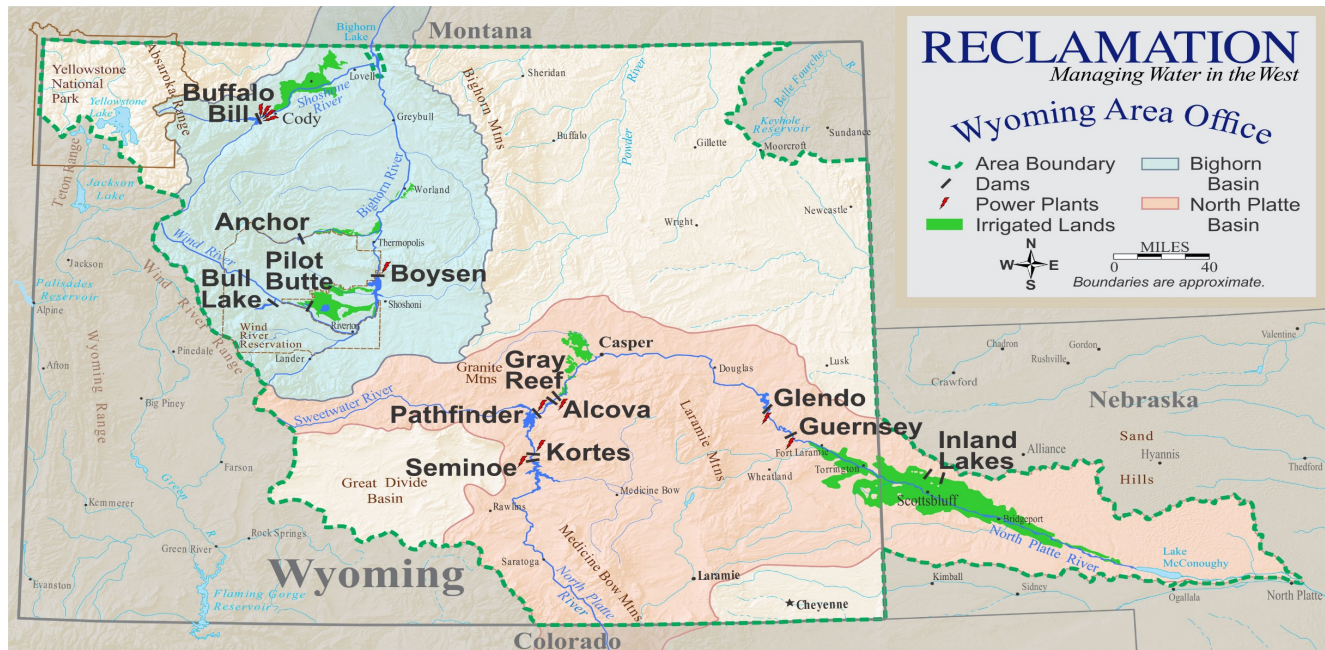


RECLAMATION

Managing Water in the West

North Platte River Basin Water Supply and Utilization Report Wyoming Area Office Report for August 2021



The Wyoming Area Office of the Bureau of Reclamation is responsible for the operation of Reclamation reservoirs in Wyoming east of the Continental Divide except for Keyhole Reservoir. Four off-stream reservoirs in Nebraska commonly referred to as the Inland Lakes also fall within the Wyoming Area. The North Platte River Basin Reservoirs have a combined storage capacity of 2,800,000 acre-feet. The major reservoirs in the Shoshone and Wind/Bighorn Basins have a combined storage capacity of 1,600,000 acre-feet.



United States of America
Department of the Interior
Bureau of Reclamation
P.O. Box 1630
Mills, Wyoming 82644-1630

**Report for August 2021
WATER SUPPLY AND UTILIZATION REPORT
NORTH PLATTE RIVER BASIN
WYOMING AREA OFFICE**

This report concerns the operation of Reclamation facilities in the North Platte River Basin.

Reclamation defines a water year as the time period of October 1 through September 30. Water year is abbreviated in this report as W. Yr.

Other organizations furnished information for the Water Supply and Utilization Report. Their cooperation is greatly appreciated.

This report is available on the Internet and can be accessed by following these steps:

- 1. Log on to the Great Plains Home Page at: <http://www.usbr.gov/gp>**
- 2. On left side of page Select [Water Operations](#).**
- 3. Under Water Operations Select [Water Management Information](#).**
- 4. Under Water Management Select [Water Supply Report](#).**
- 5. Under North Platte River Basin, select [Current Month or reports from the previous 12 months](#).**

NORTH PLATTE RIVER BASIN INFLOW

(1000 acre-feet)

	August Inflow			Accumulated Inflow (October - August)		
Reservoir	W. Yr. 2021	30 Yr. Avg. ⁵	% of Avg.	W. Yr. 2021	30 Yr. Avg. ⁵	% of Avg.
Seminole	27.3	31.2	88	509.9	939.8	54
Pathfinder ^{1, 2}	-9.2	2.9	N/A	-21.5	107.9	N/A
Glendo ³	6.1	1.9	319	179.9	214.7	84
Guernsey ⁴	-1.5	-0.5	N/A	23.5	33.5	70
System Total	22.7	35.5	64	691.8	1295.9	53

1 It is assumed that there is no gain between Seminole and Kortes Dams.

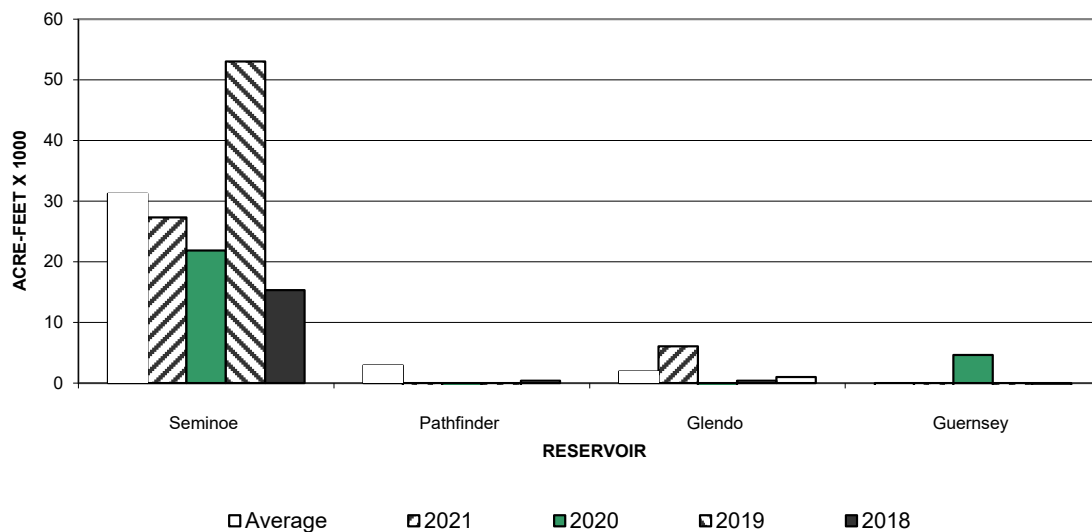
2 River gain between Kortes and Pathfinder Dams.

3 River gain between Pathfinder and Glendo Dams.

4 River gain between Glendo and Guernsey Dams.

5 30 year average. (1991-2020)

NORTH PLATTE RIVER BASIN RESERVOIR INFLOW August



NORTH PLATTE RIVER BASIN OUTFLOW

(1000 acre-feet)

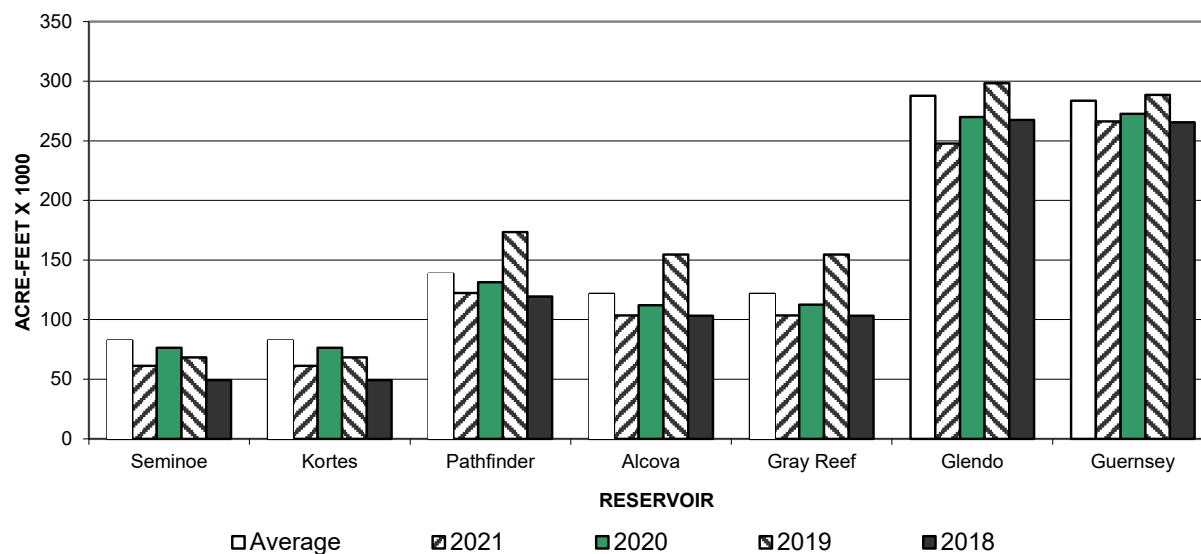
	August Outflow						Accumulated Outflow (October - August)		
Reservoir	W. Yr. 2021	30 Yr. Avg. ²	% of Avg.				W. Yr. 2021	30 Yr. Avg. ²	% of Avg.
Seminole	61.2	82.5	74	76.3	68.4	49.2	796.4	860.7	93
Kortes	61.2	82.5	74	76.3	68.3	49.2	796.2	860.5	93
Pathfinder	122.4	138.5	88	131.4	173.4	119.4	754.1	889.8	85
Alcova	103.5	121.6	85	112.2	154.5	103.2	686.7	826.4	83
Gray Reef	103.6	121.6	85	112.6	154.5	103.2	685.9	825.9	83
Glendo ¹	247.8	287.7 ¹	86	270.0	298.3	267.5	834.4	967.4 ¹	86
Guernsey	266.3	283.7	94	272.6	288.4	265.6	850.8	975.2	87

¹ In 1993 an outlet was constructed at Glendo Dam which is used to provide a flow of approximately 25 cubic feet per second, 27 year average (1994-2020).

² 30 year average (1991-2020).

NORTH PLATTE RIVER BASIN

RESERVOIR OUTFLOW August



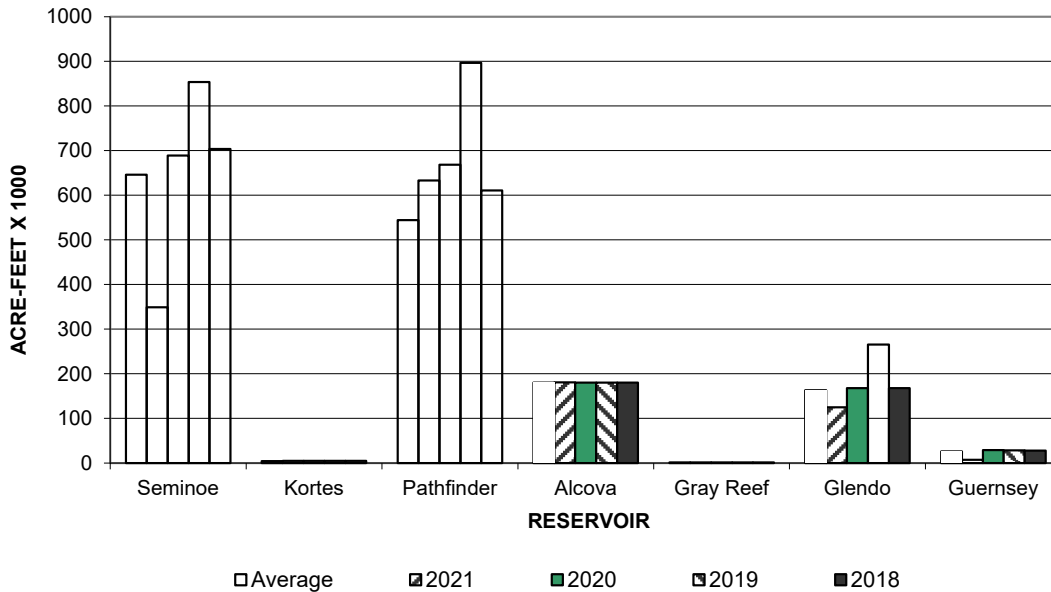
NORTH PLATTE RIVER BASIN RESERVOIR STORAGE

(1000 acre-feet)

Reservoir	Total Storage End of August						Total Conservation Storage Capacity	Percent of Capacity
	W. Yr. 2021	30 Yr. Avg. ¹	% of Avg.					
Seminoe	349.3	646.3	54	689.0	853.5	703.5	1017.3	34
Kortes	4.7	4.7	100	4.7	4.7	4.7	4.7	100
Pathfinder	633.0	544.5	116	668.4	896.9	611.0	1070.0	59
Alcova	180.6	180.4	100	180.3	180.2	180.2	184.4	98
Gray Reef	1.6	1.5	105	1.2	1.7	1.6	1.8	90
Glendo	125.0	163.0	77	168.1	265.8	167.8	492.0	25
Guernsey	7.6	26.4	29	29.1	28.2	28.1	45.6	17
Total	1301.9	1566.8	83				2815.8	46

¹ Average is based on the 1991-2020 period.

NORTH PLATTE RIVER BASIN RESERVOIR STORAGE End of August



NORTH PLATTE RIVER BASIN RESERVOIR STORAGE OWNERSHIP

(1000 acre-feet)

Ownership	Ownership of water End of August			End of August Historical Ownership			Total Storage Capacity	Percent of Capacity
	W. Yr. 2021	30 Yr. Avg. ⁵	% of Avg.	W. Yr. 2020	W. Yr. 2019	W. Yr. 2018		
Kendrick	972.0	885.2	110	1074.9	1140.0	1034.8	1201.7	81
North Platte ¹	174.2	508.5	34	512.4	783.0	513.1	1115.6	16
Glendo	140.1	138.2	101	136.3	168.8	140	171.7	82
Inland Lakes ²	0.0	0.0	N/A	0.0	0.0	0	46.0	0
Cheyenne ^{3,7}	6.5	3.1	208	7.2	6.9	3	15.7	41
PacifiCorp ⁴	2.0	1.9	105	2.0	2.0	2	2.0	100
WWDC	0.0	0.0	N/A	0.0	0.0	0	N/A	N/A
Other ⁶	7.1	29.6	24	8.1	130.4	4.2	N/A	N/A

1 This includes North Platte Guernsey and North Platte Pathfinder.

2 Water stored temporarily in mainstem facilities for later transfer to the Inland Lakes. This table does not reflect water currently stored in the Inland Lakes.

3 The City of Cheyenne has a storage contract to store water in Seminoe Reservoir by exchange of Upper North Platte Basin water through a system of trans-basin diversions.

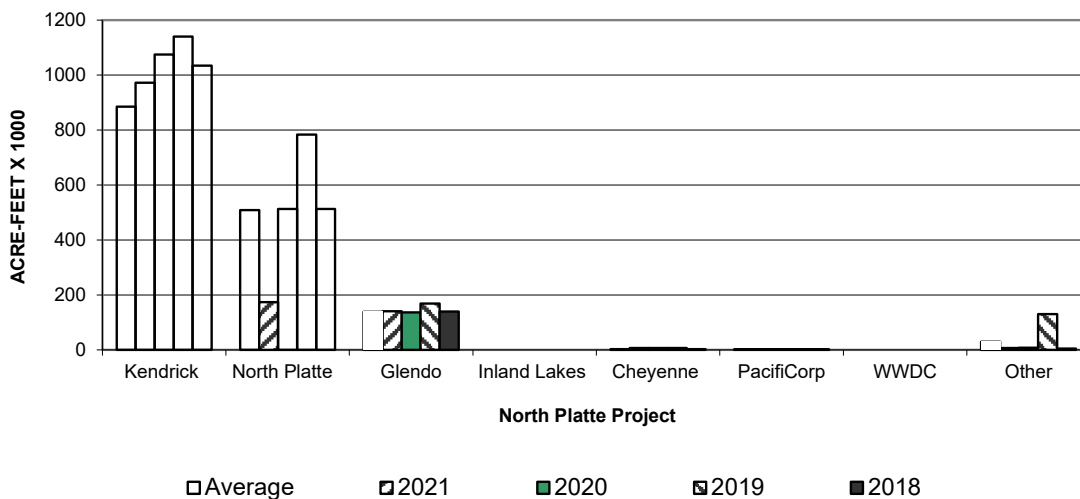
4 PacifiCorp has a storage contract to store water in Glendo Reservoir for Dave Johnston Powerplant.

5 Average is based on the 1991-2020 period.

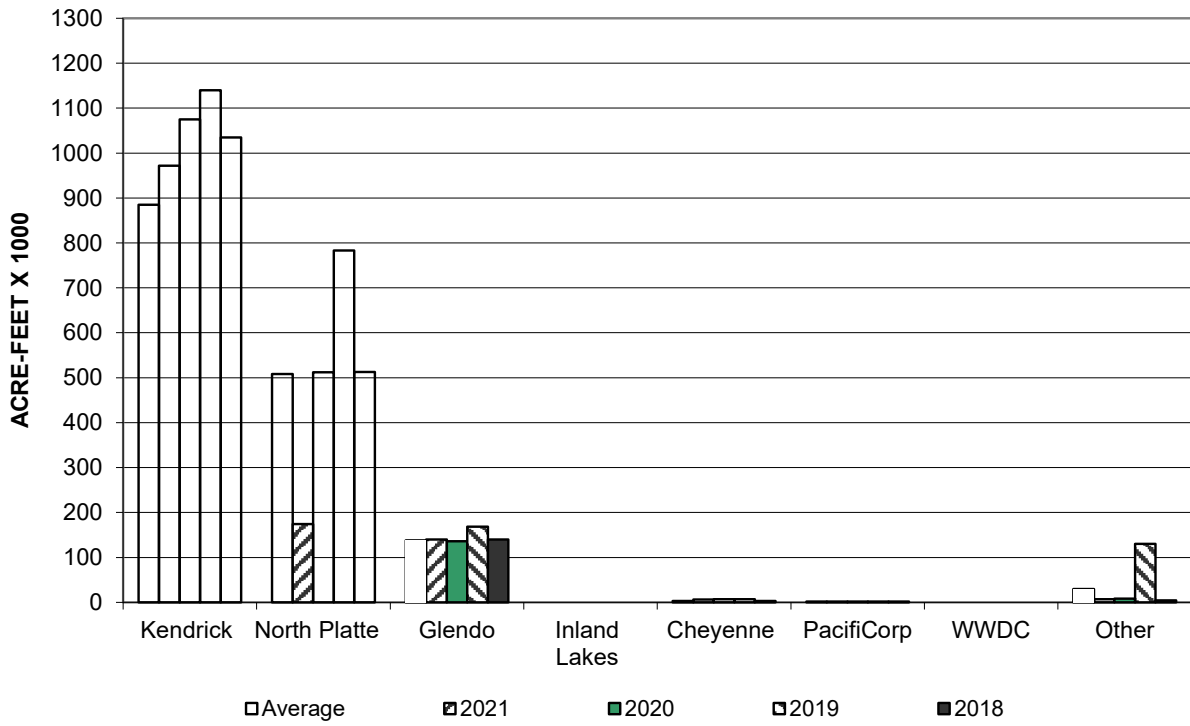
6 Water which is captured in the re-regulation space of Glendo in addition to storage rights, operational water account, and replacement of evaporation losses is labeled as "Re-regulation of Natural Flow" per Wyoming Board of Control Order Docket Number I-2000-3-8 in water Division Number One. In accordance with 2019 Natural Flow and Ownership Procedures, the October operational account can contain up to 15,000 acre-feet. On October 31, 2020, the Operational account contained 7,809 Acre-feet, the Re-Regulation space contained 0 Acre-feet.

7 Cheyenne ownership was increased to 15,700 AF on March 13, 2009 as a result of Amendment No. 1 to Contract No. 06XX6A0062.

Ownership of Water End of August



**NORTH PLATTE RIVER BASIN
OWNERSHIP OF WATER
End of August**



INLAND LAKES RESERVOIR STORAGE

Water Year 2021

(acre-feet)

Reservoir	Total Storage End of August	30 Year Average ⁵	Percent of Average	Total Storage Capacity
Lake Alice	3,013	2,601	116	11,034 ¹
Little Lake Alice	288	324	89	1,166 ²
Lake Winters Creek	1,326	786	169	1,746 ³
Lake Minatare	15,091	19,790	76	58,795 ⁴

¹ At Elevation 4182.0

² At Elevation 4139.0

³ At Elevation 4125.0

⁴ At Elevation 4125.0

⁵ 30 year average. (1991-2020)

NORTH PLATTE RIVER BASIN GROSS GENERATION

(Energy in giga-watt hours)

Powerplant	August Gross Generation						Accumulated Gross Gen. (October - August)		
	W. Yr. 2021	30 Yr. Avg. ²	% of Avg.				W. Yr. 2021	30 Yr. Avg. ²	% of Avg.
Seminole	5.4		45	10.2	9.0	6.7	103.6	119.4	87
Kortes	8.9		65	11.9	10.5	8.0	127.7	124.4	103
Fremont Canyon ¹	35.2		108	38.1	46.9	32.4	163.6	198.1	83
Alcova	14.5		91	15.5	21.6	14.3	86.3	99.4	87
Glendo	17.9		95	21.1	23.6	21.2	69.1	76.2	91
Guernsey	4.3		107.1	4.3	4.4	4.3	14.8	14.6	101

1 The powerplant for Pathfinder Dam is Fremont Canyon.

2 Average is based on the 1991-2020 period.

NORTH PLATTE RIVER BASIN GROSS GENERATION August

