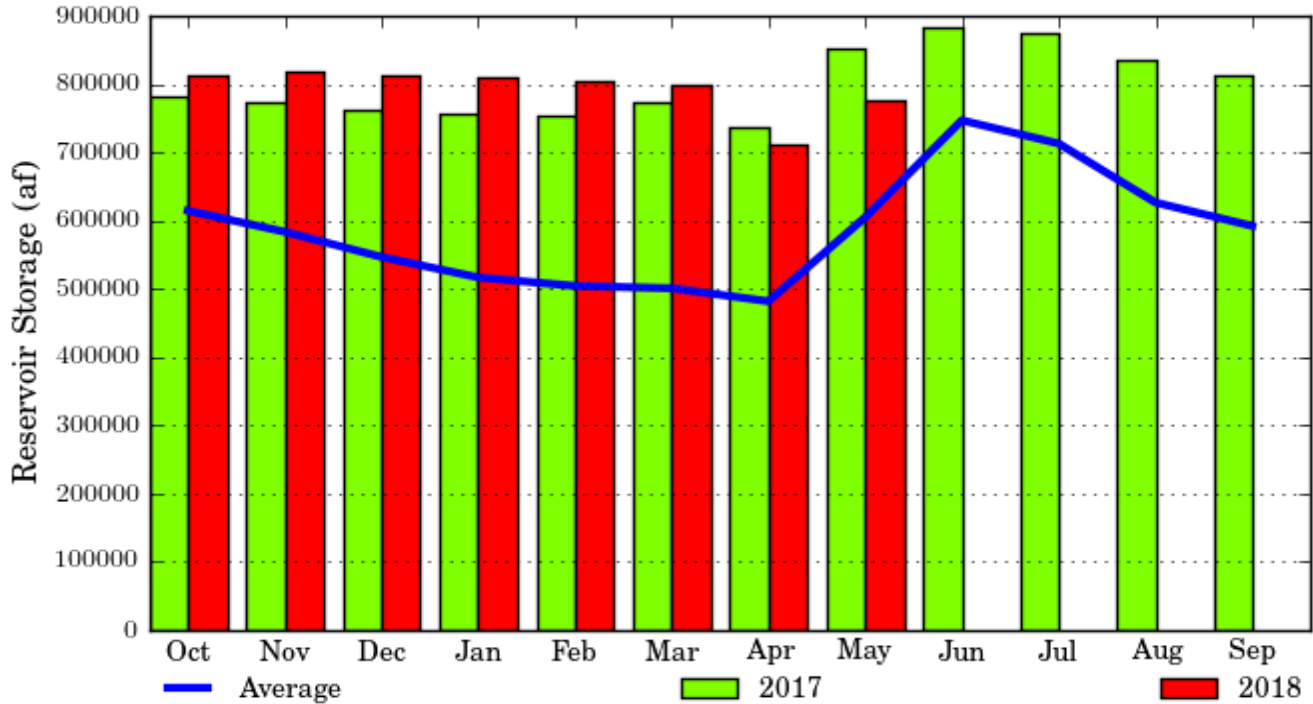


Seminole Reservoir, Wyoming - Monthly Storage Graph
 Water Years 2017 and 2018, with Average Conditions
 Updated Through May - Water Year 2018



Seminole Reservoir, Wyoming - Monthly Storage Table

Water Years 2017 and 2018, with Average Conditions

Updated Through May - Water Year 2018

Month	2017 Storage	2018 Storage	Average Storage	Percent of 2017	Percent of Average
Oct	783000	813100	614500	103%	132%
Nov	773000	817600	583600	105%	140%
Dec	763200	811600	546700	106%	148%
Jan	757300	808900	516800	106%	156%
Feb	754700	805500	504300	106%	159%
Mar	772300	798100	500900	103%	159%
Apr	736500	711700	481800	96%	147%
May	850900	776200	604700	91%	128%
Jun	884500	--	746900	--	--
Jul	873300	--	712900	--	--
Aug	835800	--	626500	--	--
Sep	813300	--	592200	--	--