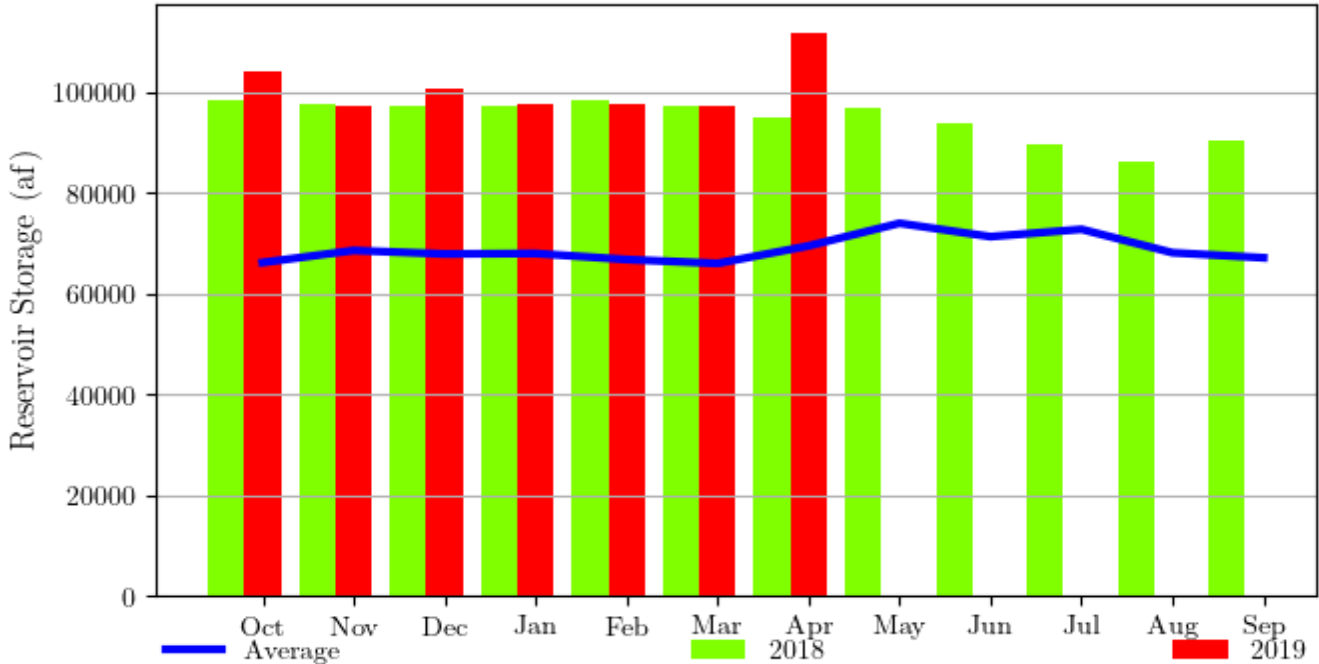


Mountain Park Reservoir, Texas - Monthly Storage Graph
 Water Years 2018 and 2019, with Average Conditions
 Updated Through April - Water Year 2019



Mountain Park Reservoir, Texas - Monthly Storage Table

Water Years 2018 and 2019, with Average Conditions

Updated Through April - Water Year 2019

Month	2018 Storage	2019 Storage	Average Storage	Percent of 2018	Percent of Average
Oct	98500	104100	66100	105%	157%
Nov	97400	97100	68500	99%	141%
Dec	97300	100500	67800	103%	148%
Jan	97100	97500	67900	100%	143%
Feb	98200	97400	66701	99%	146%
Mar	97100	97200	65923	100%	147%
Apr	95000	111800	69400	117%	161%
May	96900	--	73900	--	--
Jun	93900	--	71239	--	--
Jul	89700	--	72700	--	--
Aug	86300	--	68049	--	--
Sep	90500	--	67047	--	--