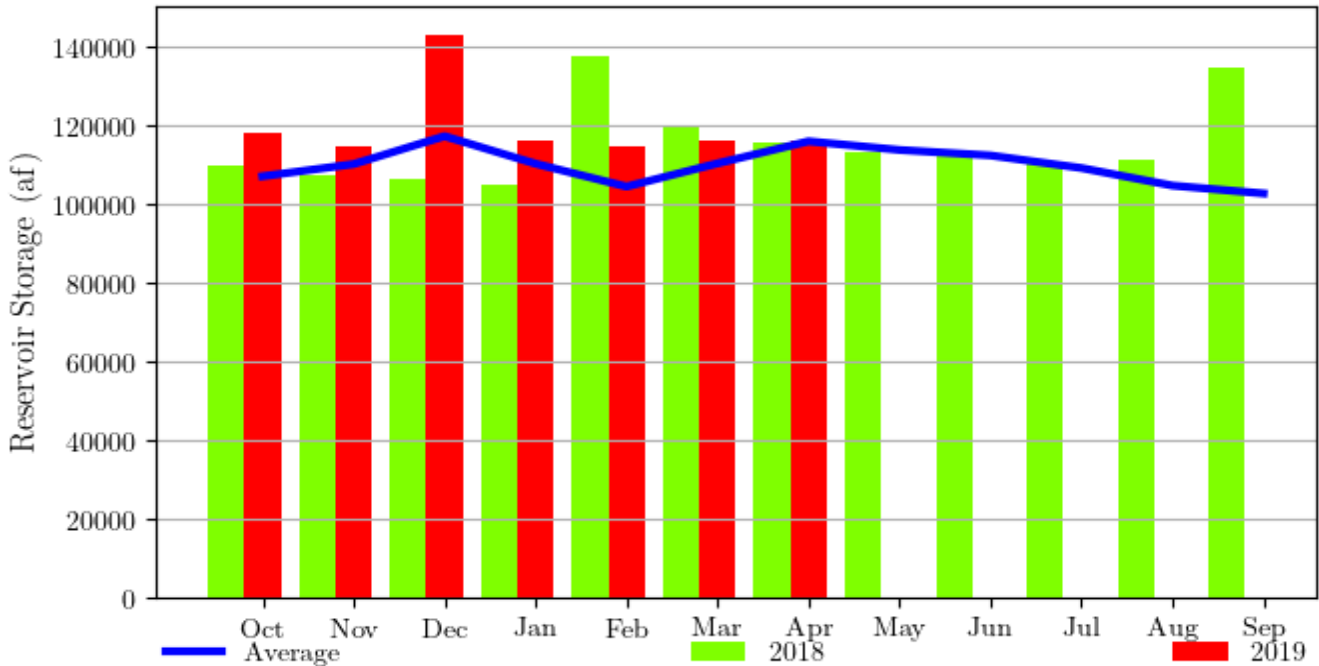


**McGee Creek Reservoir, Oklahoma - Monthly Storage Graph**  
 Water Years 2018 and 2019, with Average Conditions  
 Updated Through April - Water Year 2019



**McGee Creek Reservoir, Oklahoma - Monthly Storage Table**

Water Years 2018 and 2019, with Average Conditions

Updated Through April - Water Year 2019

Month	2018 Storage	2019 Storage	Average Storage	Percent of 2018	Percent of Average
Oct	109700	118100	107100	107%	110%
Nov	107500	114900	110200	106%	104%
Dec	106400	143200	117300	134%	122%
Jan	105200	116100	110300	110%	105%
Feb	137900	114700	104486	83%	109%
Mar	119500	116100	110380	97%	105%
Apr	115600	116000	116000	100%	100%
May	113400	--	113800	--	--
Jun	112300	--	112402	--	--
Jul	110400	--	109200	--	--
Aug	111200	--	104738	--	--
Sep	134600	--	102739	--	--