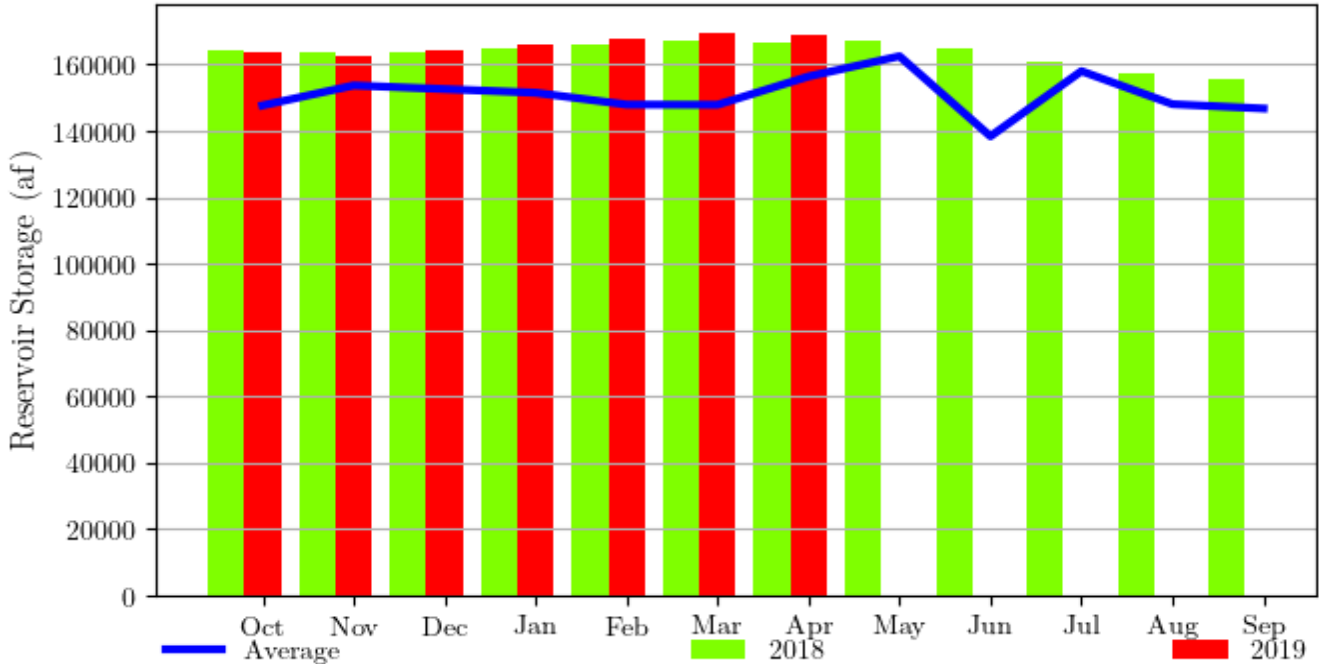


Foss Reservoir, Oklahoma - Monthly Storage Graph
 Water Years 2018 and 2019, with Average Conditions
 Updated Through April - Water Year 2019



Foss Reservoir, Oklahoma - Monthly Storage Table					
Water Years 2018 and 2019, with Average Conditions					
Updated Through April - Water Year 2019					
Month	2018 Storage	2019 Storage	Average Storage	Percent of 2018	Percent of Average
Oct	164100	163500	147664	99%	110%
Nov	164000	162600	153700	99%	105%
Dec	163800	164500	152600	100%	107%
Jan	164800	166200	151500	100%	109%
Feb	166200	167600	147922	100%	113%
Mar	167300	169700	147873	101%	114%
Apr	166700	169100	156400	101%	108%
May	167000	--	162500	--	--
Jun	164700	--	138367	--	--
Jul	160700	--	158000	--	--
Aug	157400	--	148047	--	--
Sep	155700	--	146734	--	--