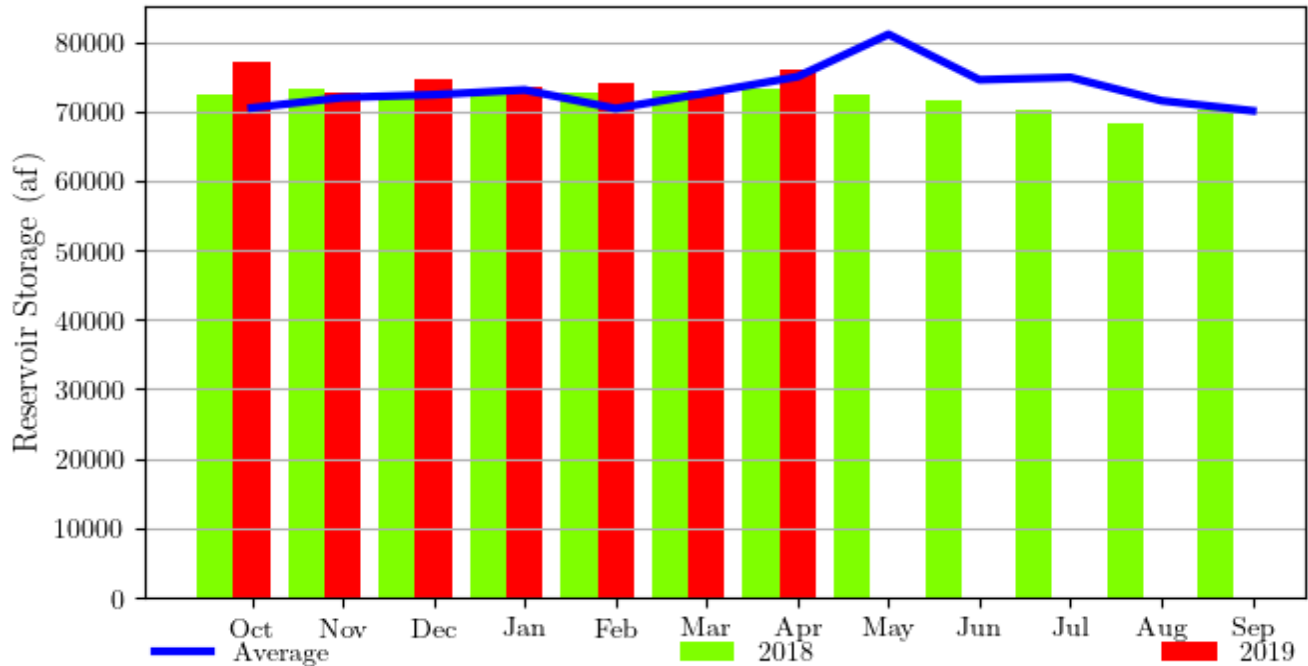


**Fort Cobb Reservoir, Oklahoma - Monthly Storage Graph**  
 Water Years 2018 and 2019, with Average Conditions  
 Updated Through April - Water Year 2019



**Fort Cobb Reservoir, Oklahoma - Monthly Storage Table**

Water Years 2018 and 2019, with Average Conditions

Updated Through April - Water Year 2019

| Month | 2018 Storage | 2019 Storage | Average Storage | Percent of 2018 | Percent of Average |
|-------|--------------|--------------|-----------------|-----------------|--------------------|
| Oct   | 72300        | 77000        | 70500           | 106%            | 109%               |
| Nov   | 73200        | 72600        | 72000           | 99%             | 100%               |
| Dec   | 72600        | 74700        | 72400           | 102%            | 103%               |
| Jan   | 73300        | 73500        | 73100           | 100%            | 100%               |
| Feb   | 72800        | 74000        | 70410           | 101%            | 105%               |
| Mar   | 73100        | 72900        | 72662           | 99%             | 100%               |
| Apr   | 73200        | 76100        | 75000           | 103%            | 101%               |
| May   | 72500        | --           | 81100           | --              | --                 |
| Jun   | 71500        | --           | 74551           | --              | --                 |
| Jul   | 70300        | --           | 74900           | --              | --                 |
| Aug   | 68400        | --           | 71540           | --              | --                 |
| Sep   | 70100        | --           | 70089           | --              | --                 |